

EUROPEAN PARLIAMENT

Working Documents

1982-1983

---

7 May 1982

DOCUMENT 1-185/82/ANNEX

ANNEX

to the report drawn up by Mr H. SABY on behalf of  
the Committee on Budgets

on the European Parliament's draft estimates for  
revenue and expenditure for the 1983 financial year

-----

Draft estimates for revenue and expenditure for 1983



C O R R I G E N D U M

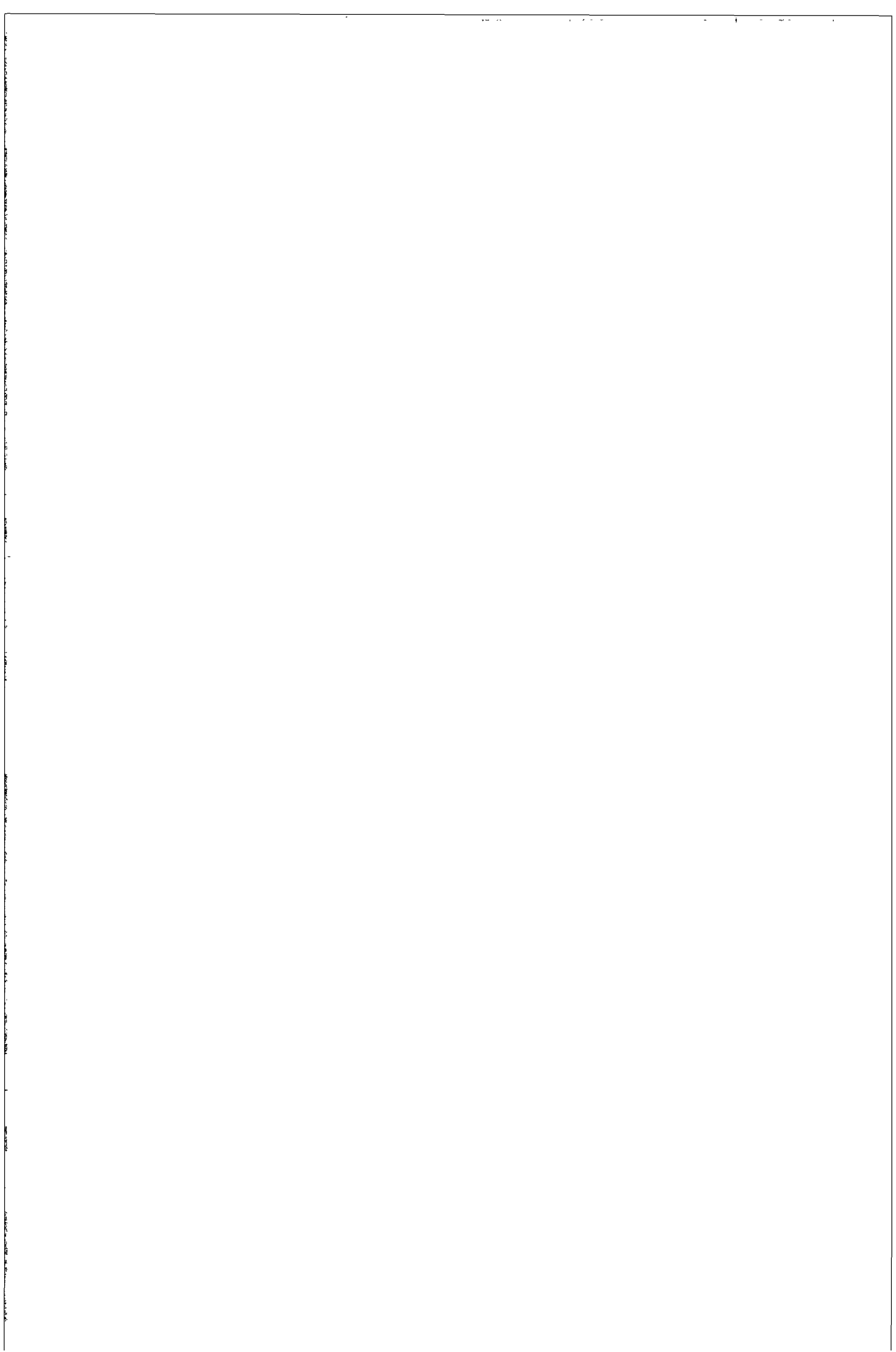
to the SABY Report  
(Doc. 1-185/82)

Page 6, paragraph 6:

The final indent should read as follows:

'- EPD :    1 B 3 en B 2;'

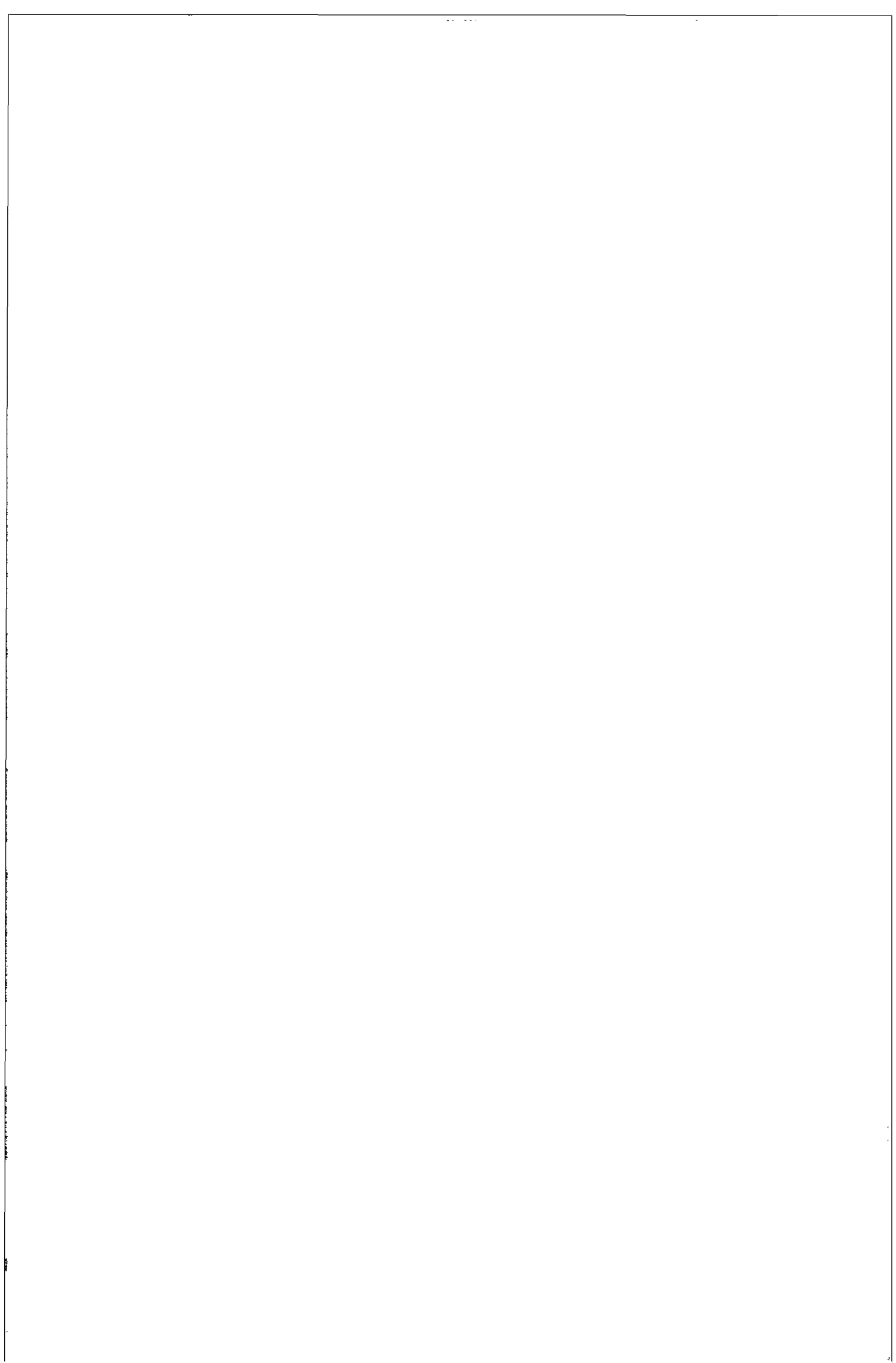
10.5.82



**EUROPEAN PARLIAMENT**

**DRAFT ESTIMATES  
1983**

PE 78.417/def.



*SECTION I*  
**EUROPEAN PARLIAMENT**

**All amounts in this budget document are expressed in ECU unless otherwise indicated.**

## PARLIAMENT

## REVENUE

**Contribution of the European Communities to the financing of the expenditure  
of the European Parliament for the financial year 1983**

Heading	Amount
Expenditure	227 818 110
Own resources	15 246 300
<b>Contribution due</b>	<b>212 571 810</b>



## PARLIAMENT

## Own resources

Title Chapter	Article	Heading	Financial year 1983	Financial year 1982	Financial year 1981
<b>TITLE 4</b>		<b>MISCELLANEOUS COMMUNITY TAXES, LEVIES AND DUES</b>			
<b>Chap. 40</b>		<i>Deductions from staff remuneration</i>			
	400	Proceeds from taxation on the salaries, wages and allowances of officials and other servants	7 256 600	9 585 000	6 245 771,36
	401	Staff contributions to the pension scheme	4 563 500	5 590 000	4 366 727,93
	402	Levy on remuneration	1 403 200	p.m.	0,—
		<i>Chapter 40 — Total</i>	13 223 300	15 175 000	10 612 499,29
		<b>TITLE 4 — TOTAL</b>	13 223 300	15 175 000	10 612 499,29
<b>TITLE 5</b>		<b>REVENUE ACCRUING FROM THE ADMINISTRATIVE OPERATION OF THE INSTITUTION</b>			
<b>Chap. 50</b>		<i>Proceeds from the sale of movable and immovable property</i>			
	500	Proceeds from the sale of movable property	1 000	1 000	9 806,86
	502	Proceeds from the sale of publications, printed works and films	220 000	200 000	187 613,05
		<i>Chapter 50 — Total</i>	221 000	201 000	197 419,91
<b>Chap. 52</b>		<i>Revenue from investments or loans granted, bank and other interest</i>			
	520	Revenue from investments or loans granted, bank and other interest	1 000 000	1 000 000	3 537 291,79
		<i>Chapter 52 — Total</i>	1 000 000	1 000 000	3 537 291,79
<b>Chap. 53</b>		<i>Exchange gains</i>			
	530	Exchange gains	1 000	1 000	0,—
		<i>Chapter 53 — Total</i>	1 000	1 000	0,—
		<b>TITLE 5 — TOTAL</b>	1 222 000	1 202 000	3 734 711,70

## PARLIAMENT

## Own resources (cont'd)

Title Chapter	Article	Heading	Financial year 1983	Financial year 1982	Financial year 1981
TITLE 6		CONTRIBUTIONS TO COMMUNITY PROGRAMMES, REPAYMENT OF EXPENDITURE AND REVENUE FROM SERVICES RENDERED AGAINST PAYMENT			
Chap. 61		<i>Repayment of miscellaneous expenditure</i>			
	610	Repayment of expenditure incurred on behalf of another institution	1 000	400 000	0,—
		<i>Chapter 61 — Total</i>	1 000	400 000	0,—
		TITLE 6 — TOTAL	1.000	400.000	0,—
TITLE 9		MISCELLANEOUS REVENUE			
Chap. 90		<i>Miscellaneous revenue</i>	800 000	800 000	1 007 006,25
		<i>Chapter 90 — Total</i>	800 000	800 000	1 007 006,25
Chap. 91		<i>(Voluntary) contribution by members to a retirement pension scheme</i>	p.m.	p.m.	0,—
		<i>Chapter 91 — Total</i>	p.m.	p.m.	0,—
		TITLE 9 — TOTAL	800 000	800 000	1 007 006,25
		GRAND TOTAL	15 246 300	17 577 000	15 354 217,24

## PARLIAMENT

## EXPENDITURE

## General summary of appropriations (1983 and 1982) and outturn (1981)

Title Chapter	Heading	Appropriations 1983	Appropriations 1982	Outturn 1981 (1)
<b>TITLE 1</b>	<b>EXPENDITURE RELATING TO PERSONS WORKING WITH THE INSTITUTION</b>			
Chap. 10	Members of the institution	38 167 330	30 662 100	31 664 708,50
Chap. 11	Staff	101 679 600	102 706 000	79 844 866,02
Chap. 12	Allowances and expenses on entering and leaving the service and on transfer	3 203 900	2 480 000	2 132 131,58
Chap. 13	Expenditure relating to missions and duty travel	8 025 000	8 025 000	6 345 506,31
Chap. 14	Socio-medical infrastructure	557 500	255 000	360 010,92
Chap. 15	Graduate traineeships and further training for staff	490 900	425 000	322 340,88
Chap. 16	Expenditure on social welfare	453 800	392 000	347 009,50
	<b>TITLE 1 — TOTAL</b>	<b>152 578 030</b>	<b>144 945 100</b>	<b>121 016 573,71</b>
<b>TITLE 2</b>	<b>BUILDINGS, EQUIPMENT AND MISCELLANEOUS OPERATING EXPENDITURE</b>			
Chap. 20	Investments in immovable property, rental of buildings and associated costs	27 679 300	25 733 200	23 791 466,49
Chap. 22	Movable property and associated costs	7 306 100	7 038 750	6 545 607,78
Chap. 23	Current administrative expenditure	6 112 300	4 520 000	4 602 687,74
Chap. 24	Entertainment and representation expenses	404 000	420 000	299 003,95
Chap. 25	Expenditure on formal and other meetings	390 000	390 000	332 177,03
Chap. 26	Expenditure on studies, surveys and consultations	30 000	30 000	109 727,41
Chap. 27	Expenditure on publishing and information	10 480 700	7 502 500	6 635 712,31
Chap. 29	Subsidies and financial contributions	2 708 000	2 488 000	1 961 922,87
	<b>TITLE 2 — TOTAL</b>	<b>55 110 400</b>	<b>48 122 450</b>	<b>44 278 305,58</b>
<b>TITLE 3</b>	<b>EXPENDITURE RESULTING FROM SPECIAL FUNCTIONS CARRIED OUT BY THE INSTITUTION</b>			
Chap. 37	Expenditure relating to certain institutions and bodies	14 554 680	6 931 600	6 720 415,53
	<b>TITLE 3 — TOTAL</b>	<b>14 554 680</b>	<b>6 931 600</b>	<b>6 720 415,53</b>
<b>TITLE 10</b>	<b>OTHER EXPENDITURE</b>			
Chap. 100	Provisional appropriations	1 895 000	7 230 000	0,—
Chap. 101	Contingency reserve	3 680 000	2 000 000	0,—
	<b>TITLE 10 — TOTAL</b>	<b>5 575 000</b>	<b>9 230 000</b>	<b>0,—</b>
	<b>GRAND TOTAL</b>	<b>227 818 110</b>	<b>209 229 150</b>	<b>172 015 294,82</b>

(1) The figures shown comprise the outturn settled as at 31 December 1981 plus appropriations carried forward.

## PARLIAMENT

## TITLE 1

## EXPENDITURE RELATING TO PERSONS WORKING WITH THE INSTITUTION

## CHAPTER 10 — MEMBERS OF THE INSTITUTION

Article Item	Heading	Appropriations 1983	Appropriations 1982	Outturn 1981
	<b>CHAPTER 10</b>			
<b>100</b>	<b><i>Salaries, allowances and payments related to salaries</i></b>			
1000	Basic salaries	p.m.	p.m.	
1001	Residence allowances	p.m.	p.m.	
1002	Family allowances	p.m.	p.m.	
1003	Representation allowances	p.m.	p.m.	
1004	Travel and subsistence allowances; attendance at meetings and associated expenditure	14 750 000	11 800 000	12 309 591,1
1005	Activities among the electorate and allowances for special travel by members in the course of their duties	2 760 330	2 452 100	1 955 269,1
	<i>Article 100 — Total</i>	17 510 330	14 252 100	14 264 860,2
<b>101</b>	<b><i>Accident and sickness insurance and other social security charges</i></b>	510 000	560 000	446 514,9
<b>102</b>	<b><i>Temporary allowances</i></b>	—	—	0,—

## TITLE 1

## EXPENDITURE RELATING TO PERSONS WORKING WITH THE INSTITUTION

## CHAPTER 10 — MEMBERS OF THE INSTITUTION

Article Item	Remarks										
1 0 0											
1 0 0 0	Item to finance the salaries of the members of the European Parliament which should be provided through the budget of that institution rather than from the budgets of the Member States, in conformity with the practice for members of other Community institutions.										
1 0 0 1	These allowances have been entered with a view to forthcoming decisions on the payment of members' salaries on a Community basis.										
1 0 0 2	See remarks against Item 1 0 0 1.										
1 0 0 3	See remarks against Item 1 0 0 1.										
1 0 0 4	<p>These appropriations have been calculated on the basis of current regulations for the refund of travel and subsistence expenses. They include a provision for Greek members and cover 13 part-sessions. The estimate is based on actual expenditure in recent months.</p> <p>Breakdown of appropriations :</p> <table data-bbox="126 1226 1405 1372"> <tr> <td data-bbox="126 1226 289 1256">— part-sessions</td> <td data-bbox="1283 1226 1380 1256">4 900 000</td> </tr> <tr> <td data-bbox="126 1256 333 1285">— Brussels meetings</td> <td data-bbox="1283 1256 1380 1285">7 200 000</td> </tr> <tr> <td data-bbox="126 1285 348 1315">— meetings elsewhere</td> <td data-bbox="1283 1285 1380 1315">2 100 000</td> </tr> <tr> <td data-bbox="126 1315 452 1344">— delegations to third countries</td> <td data-bbox="1298 1315 1380 1344">550 000</td> </tr> <tr> <td data-bbox="1164 1344 1224 1374">Total</td> <td data-bbox="1268 1344 1380 1374"><u>14 750 000</u></td> </tr> </table>	— part-sessions	4 900 000	— Brussels meetings	7 200 000	— meetings elsewhere	2 100 000	— delegations to third countries	550 000	Total	<u>14 750 000</u>
— part-sessions	4 900 000										
— Brussels meetings	7 200 000										
— meetings elsewhere	2 100 000										
— delegations to third countries	550 000										
Total	<u>14 750 000</u>										
1 0 0 5	<p>A monthly sum of 450 ECU per member over 11 months should be made available to allow 434 members to maintain permanent contact with the population of their country. An annual sum of 1 250 ECU should be made available for travel in the Member States in the course of their duties outside the meeting places in the Community.</p> <p>Travel to Spain and Portugal, countries which have applied for membership, may, with the Bureau's approval, be covered by the 1 250 ECU.</p>										

## PARLIAMENT

## CHAPTER 10 — MEMBERS OF THE INSTITUTION (cont'd)

## CHAPTER 11 — STAFF

Article Item	Heading	Appropriations 1983	Appropriations 1982	Outturn 1981
<b>1 0 3</b>	<b><i>Pensions</i></b>			
1 0 3 0	Retirement pensions	p.m.	p.m.	0,—
1 0 3 1	Invalidity pensions	p.m.	p.m.	0,—
1 0 3 2	Survivors' pensions	240 000	150 000	82 763,34
	<i>Article 1 0 3 — Total</i>	240 000	150 000	82 763,34
1 0 5	<i>Language courses for members</i>	437 000	200 000	157 347,64
1 0 6	<i>Members' secretarial expenses</i>	18 670 000	15 500 000	16 713 222,22
1 0 9	<i>Provisional appropriations to cover any adjustments to the allowances of members</i>	800 000	p.m.	0,—
	<b>CHAPTER 10 — TOTAL</b>	<b>38 167 330</b>	<b>30 662 100</b>	<b>31 664 708,50</b>
	<b>CHAPTER 11</b>			
<b>1 1 0</b>	<b><i>Officials and temporary staff holding a post provided for in the establishment plan</i></b>			
1 1 0 0	Basic salaries	67 579 700	73 200 000	53 599 961,29
1 1 0 1	Family allowances	5 676 700	6 240 000	4 659 683,44
1 1 0 2	Expatriation and foreign residence allowances (including Article 97 of the ECSC Staff Regulations)	10 137 100	10 990 000	7 868 399,44
1 1 0 3	Secretarial allowances	854 000	470 000	616 402,20
	<i>Article 1 1 0 — Total</i>	<b>84 247 500</b>	<b>90 900 000</b>	<b>66 744 446,44</b>

**HAPTER 10 — MEMBERS OF THE INSTITUTION (cont'd)****HAPTER 11 — STAFF**

Article Item	Remarks
103	
1030	These items have been entered in the budgetary nomenclature pending appropriate decisions on this subject.
1031	See remarks against Item 1030.
1032	See remarks against Item 1030.
105	The substantial increase in this appropriation takes account of the increased number of members and the rise in costs.
106	The secretarial expenses were fixed by bureau decisions of 9 February 1982.
110	
100	The appropriations entered for basic salaries of officials and, against the following items, to cover the related allowances, are calculated on the basis of the 1982 establishment plan attached (less 10 %) taking account of the posts for which the recruitment procedure has not yet been completed.
101	Family allowances include (Article 67 of the Staff Regulations of officials of the European Communities) : head of household allowance, dependent child allowance and allowance for other dependent persons and education allowance for officials and temporary staff.
102	These allowances are paid to officials fulfilling the conditions laid down in Article 4 of Annex VII to the Staff Regulations of officials of the European Communities.
103	These allowances are granted to officials in category C employed as shorthand-typists and typists.

## PARLIAMENT

CHAPTER 11 — STAFF (*cont'd*)

Article Item	Heading	Appropriations 1983	Appropriations 1982	Outturn 1981
<b>111</b>	<b><i>Other staff</i></b>			
1110	Auxiliary staff	3 854 800	3 016 000	3 216 300,0
1111	Auxiliary interpreters	—	—	0,—
1112	Local staff	p.m.	p.m.	4 888,6
1113	Special advisors	20 000	20 000	15 388,0
	<i>Article 111 — Total</i>	3 874 800	3 036 000	3 236 576,7
<b>112</b>	<b><i>Pensions, severance grants and unemployment insurance</i></b>			
1123	Severance grants	p.m.	p.m.	0,—
	<i>Article 112 — Total</i>	p.m.	p.m.	0,—
<b>113</b>	<b><i>Insurance against sickness, accidents and occupational disease</i></b>			
1130	Insurance against sickness	2 027 500	2 217 000	1 643 279,0
1131	Insurance against accidents and occupational disease	675 800	740 000	394 562,7
	<i>Article 113 — Total</i>	2 703 300	2 957 000	2 037 841,7
<b>114</b>	<b><i>Miscellaneous allowances and grants</i></b>			
1140	Birth and death grants	59 800	38 000	15 199,2
1141	Annual leave travel expenses	1 507 500	980 000	727 747,7
1142	Housing and transport allowances	—	—	0,—
1143	Fixed entertainment allowances	74 000	76 000	82 195,0
1144	Fixed travel allowances	37 000	38 000	33 305,0



## CHAPTER 11 — STAFF (cont'd)

Article Item	Remarks
<b>111</b>	
1110	<p>This appropriation covers the remuneration of staff recruited :</p> <p>(a) to strengthen the staff, especially during part-sessions, and in particular to increase the technical staff (printing, reproduction, distribution, messengers) 830 000</p> <p>(b) to replace officials temporarily unable to perform their duties 3 024 800</p> <p style="text-align: right;">Total <u>3 854 800</u></p> <p>This appropriation is calculated in the light of experience and average statistical data for recent years, having regard, in particular, to the staff requirements during part-sessions and the increase in the salaries of auxiliary staff recruited during part-sessions.</p>
1113	<p>This appropriation is earmarked for the engagement of an additional doctor during part-sessions.</p>
<b>113</b>	
1130	<p>Appropriation to cover the cost of the institution's contribution to the joint sickness insurance scheme.</p>
1131	<p>Appropriation to cover the risk to staff of accidents and occupational diseases and to meet any expenditure not covered by the insurance.</p>
<b>114</b>	
1140	<p>Provision is made for the payment of these grants in Articles 70, 74 and 75 of the Staff Regulations.</p>
1141	<p>Officials are entitled to the (flat-rate) payment of the cost of travel from their place of employment to their place of origin for themselves and their families for their annual leave (Article 8 of Annex VII to the Staff Regulations of officials of the European Communities).</p> <p>Provision must be made for an increase in rail fares and in the number of recipients.</p>
1143	<p>Fixed entertainment allowances pursuant to Article 14 of Annex VII to the Staff Regulations of officials of the European Communities.</p>
1144	<p>Fixed travel allowances pursuant to Article 15 of Annex VII to the Staff Regulations of officials of the European Communities.</p>

## PARLIAMENT

CHAPTER 11 — STAFF (*cont'd*)

Article Item	Heading	Appropriations 1983	Appropriations 1982	Outturn 1981
<b>114</b>	<b>(cont'd)</b>			
1145	Special allowance for accounting officers and administrators of imprest accounts	22 000	22 000	18 526,22
1146	Constitution or maintenance of pension rights for temporary staff	18 600	13 000	2 336,70
1149	Other allowances and repayments	p.m.	p.m.	0,—
	<i>Article 114 — Total</i>	1 718 900	1 167 000	879 310,09
<b>115</b>	<b>Overtime</b>	864 800	1 090 000	910 682,21
<b>116</b>	<b>Salary weightings</b>	p.m.	p.m.	2 151 408,86
<b>117</b>	<b>Supplementary services</b>			
1170	Freelance interpreters and conference technicians	4 100 000	2 926 000	3 544 502,91
1171	Freelance proof-readers	—	—	0,—
1172	Other services and work sent out for translation and typing	697 600	630 000	340 096,98
	<i>Article 117 — Total</i>	4 797 600	3 556 000	3 884 599,89
<b>119</b>	<b>Provisional appropriation</b>			
1190	Provisional appropriation to cover any adjustments to the remuneration of officials and other staff	3 472 700	p.m.	0,—
	<i>Article 119 — Total</i>	3 472 700	p.m.	0,—
	<b>CHAPTER 11 — TOTAL</b>	101 679 600	102 706 000	79 844 866,02

CHAPTER 11 — STAFF (*cont'd*)

Article Item	Remarks
114	<i>(cont'd)</i>
1145	Under the third subparagraph of Article 70 (3) of the Financial Regulation of 21 December 1977 (OJ No L 356, 31. 12. 1977, p. 1) and Article 85 of the implementing provisions, a special indexed allowance is granted to accounting officers, assistant accountant officers or administrators of advance funds.
115	Under the provisions of the Staff Regulations of officials of the European Communities, overtime is paid only to category C and D grade officials with reference to their basic salaries.
116	Under this article may be entered the appropriation to cover the payment of the weightings in accordance with the relevant decisions taken by the Council.
117	
1170	This appropriation is set aside for the services of freelance interpreters. A sum estimated at 400 000 ECU, covering payment for services performed by the European Parliament's interpreters, may be available for re-use. The increase in the appropriations entered is based, in particular, on the increasing use of freelance interpreters and rises in the rates payable.
1172	Other staff paid on a freelance basis for translation, typing, printing, microfiche, coding and technical assistance work sent to outside suppliers. The increase is due to delays in the recruitment of translators and interpreters to cover Greek and to the increased number of pages of the Verbatim Report of Proceedings, which are mainly translated by outside translators.
119	
1190	This appropriation is provisional and can be used only after transfer to operational articles and items. It is intended to cover the impact of any salary adjustments decided by the Council in 1983.

## PARLIAMENT

## CHAPTER 12 — ALLOWANCES AND EXPENSES ON ENTERING AND LEAVING THE SERVICE AND ON TRANSFER

Article Item	Heading	Appropriations 1983	Appropriations 1982	Outturn 1981
	<b>CHAPTER 12</b>			
1 2 0	<i>Miscellaneous expenditure on staff recruitment</i>	360 000	300 000	279 161,39
1 2 1	<i>Travel expenses (including family members)</i>			
1 2 1 1	Travel expenses for staff	55 000	40 000	56 800,14
	<i>Article 1 2 1 — Total</i>	55 000	40 000	56 800,14
1 2 2	<i>Installation, resettlement and transfer allowances</i>			
1 2 2 1	Installation, resettlement and transfer allowances for staff	1 018 400	680 000	497 609,12
	<i>Article 1 2 2 — Total</i>	1 018 400	680 000	497 609,12
1 2 3	<i>Removal expenses</i>			
1 2 3 1	Removal expenses for staff	436 500	350 000	188 266,28
	<i>Article 1 2 3 — Total</i>	436 500	350 000	188 266,28
1 2 4	<i>Temporary daily subsistence allowances</i>	874 000	650 000	756 440,33
1 2 5	<i>Allowances for staff assigned non-active status, retired in the interests of the service or dismissed</i>	375 000	460 000	353 854,32

## PARLIAMENT

## CHAPTER 12 — ALLOWANCES AND EXPENSES ON ENTERING AND LEAVING THE SERVICE AND ON TRANSFER

Article Item	Remarks
120	This appropriation covers the cost of publication, of calling candidates for competitions, the hire of rooms and machines, etc., and recruitment medical examinations.
121	This appropriation is to cover the travel expenses of officials on entering or leaving the service or on transfer. The increase is due to the rise in transport rates in the Member States and takes account of the number of staff to be recruited.
122	<p>1221 These allowances amount to two months' basic salary for officials who are heads of household and to one months' basic salary for others. They are paid to staff obliged to change their place of residence upon taking up their duties, on leaving the service or upon transfer to a new place of work.</p> <p>This increase is due :</p> <ul style="list-style-type: none"> <li>— firstly, to the increase in the number of staff and</li> <li>— secondly, to the evolution of salary scales.</li> </ul>
123	<p>1231 This appropriation covers removal expenses for the staff referred to in Item 1221.</p> <p>The increase is due :</p> <ul style="list-style-type: none"> <li>— firstly, to the increase in the number of staff and</li> <li>— secondly, to the increase in the prices charged by removal contractors.</li> </ul>
124	Newly-recruited staff are entitled to daily allowances for a limited period (Article 10 of Annex VII to the Staff Regulations of officials of the European Communities). Reappropriation takes account of staff to be recruited during the 1982 financial year.
125	<p>This appropriation covers allowances to be paid to officials assigned non-active status as a result of measures terminating their employment in the interests of the service following the enlargement of the Communities.</p> <p>This appropriation covers, in particular, the allowances paid to officials who left the institution in 1973 when the Communities were first enlarged.</p>

## PARLIAMENT

CHAPTER 12 — ALLOWANCES AND EXPENSES ON ENTERING AND LEAVING THE SERVICE AND ON TRANSFER (*cont'd*)

## CHAPTER 13 — EXPENDITURE RELATING TO MISSIONS AND DUTY TRAVEL

## CHAPTER 14 — SOCIO-MEDICAL INFRASTRUCTURE

Article Item	Heading	Appropriations 1983	Appropriations 1982	Outturn 1981
129	<i>Provisional appropriation to cover any adjustments to the remuneration and various allowances paid to officials and other servants</i>	85 000	p.m.	0,—
	CHAPTER 12 — TOTAL	3 203 900	2 480 000	2 132 131,58
	CHAPTER 13			
130	<i>Mission expenses, travel expenses and incidental expenditure</i>			
1301	Mission expenses for staff	8 025 000	8 025 000	6 345 506,31
1302	Special equipment for missions	—	—	0,—
	<i>Article 130 — Total</i>	8 025 000	8 025 000	6 345 506,31
	CHAPTER 13 — TOTAL	8 025 000	8 025 000	6 345 506,31
	CHAPTER 14			
140	<i>Restaurants and canteens</i>	475 000	175 000	299 656,99
141	<i>Medical service</i>	82 500	80 000	60 353,93
	CHAPTER 14 — TOTAL	557 500	255 000	360 010,92

## PARLIAMENT

CHAPTER 12 — ALLOWANCES AND EXPENSES ON ENTERING AND LEAVING THE SERVICE AND ON TRANSFER (*cont'd*)

## CHAPTER 13 — EXPENDITURE RELATING TO MISSIONS AND DUTY TRAVEL

## CHAPTER 14 — SOCIO-MEDICAL INFRASTRUCTURE

Article Item	Remarks												
129	The allowances paid under this chapter may be adjusted in the light of decisions on salary increases.												
130													
1301	<p>The scale of this appropriation to cover staff mission and travel expenses is due notably to the large number of missions between the three places of work, to the increase in the activities of Parliament and to the rise in travel and subsistence expenses.</p> <p>Breakdown of the appropriations :</p> <table data-bbox="140 1190 1409 1372"> <tr> <td>— 13 part-sessions</td> <td style="text-align: right;">5 037 500</td> </tr> <tr> <td>— Brussels meetings</td> <td style="text-align: right;">1 562 600</td> </tr> <tr> <td>— meetings elsewhere</td> <td style="text-align: right;">1 232 700</td> </tr> <tr> <td>— delegations to third countries</td> <td style="text-align: right;">125 000</td> </tr> <tr> <td>— Luxembourg</td> <td style="text-align: right;">67 200</td> </tr> <tr> <td style="text-align: right;"><b>Total</b></td> <td style="text-align: right;"><b>8 025 000</b></td> </tr> </table>	— 13 part-sessions	5 037 500	— Brussels meetings	1 562 600	— meetings elsewhere	1 232 700	— delegations to third countries	125 000	— Luxembourg	67 200	<b>Total</b>	<b>8 025 000</b>
— 13 part-sessions	5 037 500												
— Brussels meetings	1 562 600												
— meetings elsewhere	1 232 700												
— delegations to third countries	125 000												
— Luxembourg	67 200												
<b>Total</b>	<b>8 025 000</b>												
140	The increase is necessary to ensure satisfactory functioning of the cafeterias and canteens in Luxembourg, Brussels and Strasbourg (overheads, utensils, maintenance, cleaning, etc.).												
141	This appropriation covers the purchase of pharmaceutical products for the medical service, the cost of annual medical check-ups and of the procedures connected with the granting of invalidity pensions. Purchases of pharmaceutical products are effected for the three places of work.												

## PARLIAMENT

## CHAPTER 15 — GRADUATE TRAINEESHIPS AND FURTHER TRAINING FOR STAFF

## CHAPTER 16 — EXPENDITURE ON SOCIAL WELFARE

Article Item	Heading	Appropriations 1983	Appropriations 1982	Outturn 1981
	<b>CHAPTER 15</b>			
150	<i>Cost of organizing graduate traineeships with the institution</i>	162 000	175 000	104 018,84
151	<i>Language courses, retraining, further training and information for staff</i>	328 900	250 000	218 322,04
	<b>CHAPTER 15 — TOTAL</b>	490 900	425 000	322 340,88
	<b>CHAPTER 16</b>			
160	<i>Special assistance grants</i>	21 600	15 000	7 200,16
161	<i>Social contacts between staff</i>	51 200	57 000	33 480,90
162	<i>Other welfare expenditure</i>			
1620	Other expenditure	381 000	320 000	306 328,44
1621	Fitting-out of an inter-Community sports centre	p.m.	p.m.	0,—
	<i>Article 162 — Total</i>	381 000	320 000	306 328,44
	<b>CHAPTER 16 — TOTAL</b>	453 800	392 000	347 009,50
	<b>Title 1 — Total</b>	<b>152 578 030</b>	<b>144 945 100</b>	<b>121 016 573,71</b>



## PARLIAMENT

## CHAPTER 15 — GRADUATE TRAINEESHIPS AND FURTHER TRAINING FOR STAFF

## CHAPTER 16 — EXPENDITURE ON SOCIAL WELFARE

Article Item	Remarks
150	This appropriation covers the payment of an allowance to language trainees, and accident and sickness insurance during courses. It also covers travel expenses and any allowances paid.
151	This appropriation covers expenditure on language and technical courses in the European Parliament and courses abroad, teaching materials, management courses, private study courses, the library and courses in preparation for new duties.
160	This appropriation is to cover action taken in respect of officials and other servants in particularly difficult situations (Article 76 of the Staff Regulations of officials of the European Communities).
161	This appropriation is to provide financial backing for schemes to promote social contact between staff of different nationalities, e.g. subsidies to staff clubs, sports associations, cultural societies, etc. Financial contribution to inter-institutional social activities in Luxembourg and Brussels.
162	
1620	The appropriation under this item covers all other aid and subsidies for the staff and their families, e.g. for the crèche, day nurseries, holiday camps, domestic help, legal assistance, etc. It also includes a subsidy to the Staff Committee. Financial contribution to inter-institutional social activities in Luxembourg and Brussels.
1621	Rental and fitting-out of sports halls and grounds for the use of staff clubs. For the moment there is no inter-Community sports centre.

## PARLIAMENT

## TITLE 2

## BUILDINGS, EQUIPMENT AND MISCELLANEOUS OPERATING EXPENDITURE

## CHAPTER 20 — INVESTMENTS IN IMMOVABLE PROPERTY, RENTAL OF BUILDINGS AND ASSOCIATED COSTS

Article Item	Heading	Appropriations 1983	Appropriations 1982	Outturn 1981
	<b>CHAPTER 20</b>			
200	<i>Rent</i>			
2000	Rent	17 967 700	17 200 000	15 176 869,56
2001	Deposits	p.m.	p.m.	0,—
	<i>Article 200 — Total</i>	17 967 700	17 200 000	15 176 869,56
201	<i>Insurance</i>	88 300	73 200	63 498,02
202	<i>Water, gas, electricity and heating</i>	2 123 500	2 260 000	1 751 509,19
203	<i>Cleaning and maintenance</i>	4 517 800	3 900 000	2 872 137,18
204	<i>Fitting-out of premises</i>	1 223 600	1 000 000	1 918 981,84

## TITLE 2

## BUILDINGS, EQUIPMENT AND MISCELLANEOUS OPERATING EXPENDITURE

## CHAPTER 20 — INVESTMENTS IN IMMOVABLE PROPERTY, RENTAL OF BUILDINGS AND ASSOCIATED COSTS

Article Item	Remarks										
200											
2000	Breakdown of appropriation : <table style="width: 100%; border-collapse: collapse;"> <tr> <td style="width: 80%;">— Luxembourg</td> <td style="text-align: right;">6 998 000</td> </tr> <tr> <td>— Strasbourg</td> <td style="text-align: right;">5 550 000</td> </tr> <tr> <td>— Brussels</td> <td style="text-align: right;">4 713 300</td> </tr> <tr> <td>— external offices</td> <td style="text-align: right;">706 400</td> </tr> <tr> <td></td> <td style="text-align: right; border-top: 1px solid black;">Total 17 967 700</td> </tr> </table>	— Luxembourg	6 998 000	— Strasbourg	5 550 000	— Brussels	4 713 300	— external offices	706 400		Total 17 967 700
— Luxembourg	6 998 000										
— Strasbourg	5 550 000										
— Brussels	4 713 300										
— external offices	706 400										
	Total 17 967 700										
	The rental is calculated over 12 months on the basis of existing leases or leases in preparation, which normally provide for indexing to the cost of living, at least in one of the three places of work.										
202	The appropriations take account of the rise in electricity and heating charges and to the increase in cleaning costs. Breakdown of appropriation : <table style="width: 100%; border-collapse: collapse;"> <tr> <td style="width: 80%;">— Luxembourg</td> <td style="text-align: right;">1 090 500</td> </tr> <tr> <td>— Strasbourg</td> <td style="text-align: right;">474 500</td> </tr> <tr> <td>— Brussels</td> <td style="text-align: right;">404 900</td> </tr> <tr> <td>— external offices</td> <td style="text-align: right;">153 600</td> </tr> <tr> <td></td> <td style="text-align: right; border-top: 1px solid black;">Total 2 123 500</td> </tr> </table>	— Luxembourg	1 090 500	— Strasbourg	474 500	— Brussels	404 900	— external offices	153 600		Total 2 123 500
— Luxembourg	1 090 500										
— Strasbourg	474 500										
— Brussels	404 900										
— external offices	153 600										
	Total 2 123 500										
203	See remarks against Article 202. Breakdown of appropriation : <table style="width: 100%; border-collapse: collapse;"> <tr> <td style="width: 80%;">— Luxembourg</td> <td style="text-align: right;">1 976 100</td> </tr> <tr> <td>— Strasbourg</td> <td style="text-align: right;">1 487 800</td> </tr> <tr> <td>— Brussels</td> <td style="text-align: right;">970 200</td> </tr> <tr> <td>— external offices</td> <td style="text-align: right;">83 700</td> </tr> <tr> <td></td> <td style="text-align: right; border-top: 1px solid black;">Total 4 517 800</td> </tr> </table>	— Luxembourg	1 976 100	— Strasbourg	1 487 800	— Brussels	970 200	— external offices	83 700		Total 4 517 800
— Luxembourg	1 976 100										
— Strasbourg	1 487 800										
— Brussels	970 200										
— external offices	83 700										
	Total 4 517 800										
204	This appropriation covers foreseeable current expenditure.										

## PARLIAMENT

CHAPTER 20 — INVESTMENTS IN IMMOVABLE PROPERTY, RENTAL OF BUILDINGS AND ASSOCIATED COSTS (*cont'd*)

## CHAPTER 22 — MOVABLE PROPERTY AND ASSOCIATED COSTS

Article Item	Heading	Appropriations 1983	Appropriations 1982	Outturn 1981
205	<i>Security and surveillance of buildings</i>	1 518 400	1 300 000	1 243 849,19
206	<i>Acquisition of immovable property</i>	p.m.	p.m.	350 000,—
207	<i>Construction of buildings</i>	p.m.	—	0,—
208	<i>Other expenditure preliminary to the construction of buildings or to the acquisition of immovable property</i>	p.m.	p.m.	0,—
209	<i>Other expenditure on buildings</i>	240 000	p.m.	414 621,51
<b>CHAPTER 20 — TOTAL</b>		<b>27 679 300</b>	<b>25 733 200</b>	<b>23 791 466,49</b>
<b>CHAPTER 22</b>				
220	<i>Office machines</i>			
2200	New purchases of office machines	153 000	286 000	336 871,41
2201	Replacement of office machines	165 000	210 000	416 407,10
2202	Hire of office machines *	p.m.	p.m.	0,—
2203	Maintenance, use and repair of office machines	187 000	170 000	124 869,10
<i>Article 220 — Total</i>		<b>505 000</b>	<b>666 000</b>	<b>878 147,61</b>
221	<i>Furniture</i>			
2210	New purchases of furniture	197 300	200 000	792 627,70
2211	Replacement of furniture	110 000	80 000	60 860,19

PARLIAMENT

CHAPTER 20 — INVESTMENTS IN IMMOVABLE PROPERTY, RENTAL OF BUILDINGS AND ASSOCIATED COSTS (cont'd)

CHAPTER 22 — MOVABLE PROPERTY AND ASSOCIATED COSTS

Article Item	Remarks										
205	<p>This appropriation covers essentially the costs of caretaking and surveillance in respect of buildings occupied by Parliament at its three habitual places of work and the external offices.</p> <p>Breakdown of appropriation :</p> <table data-bbox="140 700 1417 860"> <tr> <td>— Luxembourg</td> <td style="text-align: right;">469 200</td> </tr> <tr> <td>— Strasbourg</td> <td style="text-align: right;">480 000</td> </tr> <tr> <td>— Brussels</td> <td style="text-align: right;">469 200</td> </tr> <tr> <td>— external offices</td> <td style="text-align: right;">100 000</td> </tr> <tr> <td style="text-align: right;">Total</td> <td style="text-align: right; border-top: 1px solid black;">1 518 400</td> </tr> </table>	— Luxembourg	469 200	— Strasbourg	480 000	— Brussels	469 200	— external offices	100 000	Total	1 518 400
— Luxembourg	469 200										
— Strasbourg	480 000										
— Brussels	469 200										
— external offices	100 000										
Total	1 518 400										
209	<p>Appropriation to cover other current expenditure on buildings not specifically provided for in the other articles in Chapter 20. The expenditure forecast takes account of the increase in tenant's charges, refuse disposal and sewerage charges, purchase of shrubs, flagpoles, allowances for porters.</p>										
220											
2200	<p>This appropriation is for the purchase of additional office machinery for the Secretariat and the political groups in Luxembourg, Strasbourg and Brussels.</p>										
2201	<p>Appropriation to cover the renewal of office machines which are older than the normal limit for depreciation.</p>										
221											
2211	<p>This is for the replacement of various furniture in use for between 10 and 15 years.</p>										

## PARLIAMENT

CHAPTER 22 — MOVABLE PROPERTY AND ASSOCIATED COSTS (*cont'd*)

Article Item	Heading	Appropriations 1983	Appropriations 1982	Outturn 1981
2 2 1	<i>(cont'd)</i>			
2 2 1 2	Hire of furniture	p.m.	p.m.	4 788,13
2 2 1 3	Maintenance, use and repair of furniture	10 000	10 000	6 675,75
	<i>Article 2 2 1 — Total</i>	317 300	290 000	864 951,77
2 2 2	<i>Technical equipment and installations</i>			
2 2 2 0	New purchases of technical equipment and installations	1 312 000	1 533 500	1 845 585,47
2 2 2 1	Replacements of technical equipment and installations	529 800	508 000	22 402,27
2 2 2 2	Hire of technical equipment and installations	1 708 000	1 245 000	852 855,98
2 2 2 3	Maintenance, use and repair of technical equipment and installations	500 000	435 000	352 082,45
	<i>Article 2 2 2 — Total</i>	4 049 800	3 721 500	3 072 926,17
2 2 3	<i>Vehicles</i>			
2 2 3 0	New purchases of vehicles	25 000	40 000	114 944,26
2 2 3 1	Replacement of vehicles	160 000	172 500	180 181,02
2 2 3 2	Hire of vehicles	552 000	550 000	287 820,31
2 2 3 3	Maintenance, use and repair of vehicles	414 000	450 000	271 537,87
	<i>Article 2 2 3 — Total</i>	1 151 000	1 212 500	854 483,46
2 2 4	<i>Equipment, operating costs and services relating to data-processing</i>			
2 2 4 0	New purchases	134 000	94 000	73 638,65
2 2 4 1	Replacements	p.m.	p.m.	0,—

CHAPTER 22 — MOVABLE PROPERTY AND ASSOCIATED COSTS (cont'd)

Article Item	Remarks												
222													
2220	This appropriation covers the purchase of additional technical installations and equipment, in particular for the audio-visual sector and work-processing equipment.												
2221	This appropriation is to cover the renewal of certain interpretation, printing shop and audio-visual equipment.												
2222	<p>This appropriation covers :</p> <table data-bbox="140 1009 1409 1190"> <tr> <td data-bbox="140 1009 385 1043">— telephone equipment</td> <td data-bbox="1313 1009 1394 1043">455 300</td> </tr> <tr> <td data-bbox="140 1043 422 1077">— photocopying equipment</td> <td data-bbox="1313 1043 1394 1077">450 000</td> </tr> <tr> <td data-bbox="140 1077 385 1111">— telecopier equipment</td> <td data-bbox="1313 1077 1394 1111">170 000</td> </tr> <tr> <td data-bbox="140 1111 452 1145">— word-processing equipment</td> <td data-bbox="1313 1111 1394 1145">500 000</td> </tr> <tr> <td data-bbox="140 1145 341 1179">— other equipment</td> <td data-bbox="1313 1145 1394 1179">132 700</td> </tr> <tr> <td data-bbox="1179 1168 1239 1202" style="text-align: right;"><b>Total</b></td> <td data-bbox="1298 1168 1394 1202"><b>1 708 000</b></td> </tr> </table>	— telephone equipment	455 300	— photocopying equipment	450 000	— telecopier equipment	170 000	— word-processing equipment	500 000	— other equipment	132 700	<b>Total</b>	<b>1 708 000</b>
— telephone equipment	455 300												
— photocopying equipment	450 000												
— telecopier equipment	170 000												
— word-processing equipment	500 000												
— other equipment	132 700												
<b>Total</b>	<b>1 708 000</b>												
223													
2230	This appropriation is required for the purchase of a van.												
2231	11 cars and one van need replacement.												
2232	This appropriation covers the hire of cars, taxis and coaches in places where meetings are held.												
2233	The appropriation requested is commensurate with the increase in maintenance costs.												
224													
2240	Purchase of data processing and telematic equipment (mainly terminals and telecommunications equipment) to extend the internal network in all the places of work and provide increased access to external data bases.												

## PARLIAMENT

CHAPTER 22 — MOVABLE PROPERTY AND ASSOCIATED COSTS (*cont'd*)

## CHAPTER 23 — CURRENT ADMINISTRATIVE EXPENDITURE

Article Item	Heading	Appropriations 1983	Appropriations 1982	Outturn 1981
2 2 4	( <i>cont'd</i> )			
2 2 4 2	Hire and maintenance of equipment	310 000	310 000	175 702,80
2 2 4 3	Development and maintenance of applications	100 000	100 000	163 257,58
2 2 4 4	Interrogation of data bases	28 000	28 000	5 000,—
	<i>Article 2 2 4 — Total</i>	572 000	532 000	417 599,03
2 2 5	<i>Documentation and library expenditure</i>			
2 2 5 0	Library funds, purchase of books	160 000	137 000	122 552,24
2 2 5 1	Special library, documentation and reproduction equipment	15 000	13 500	13 479,80
2 2 5 2	Subscriptions to newspapers and periodicals	181 000	151 250	112 682,11
2 2 5 3	Subscriptions to news agencies	340 000	305 000	199 785,59
2 2 5 4	Binding and upkeep of library books	15 000	10 000	9 000,—
	<i>Article 2 2 5 — Total</i>	711 000	616 750	457 499,74
	<b>CHAPTER 22 — TOTAL</b>	7 306 100	7 038 750	6 545 607,78
	<b>CHAPTER 23</b>			
2 3 0	<i>Stationery and office supplies</i>	1 522 000	1 456 000	1 242 525,73



## PARLIAMENT

CHAPTER 22 — MOVABLE PROPERTY AND ASSOCIATED COSTS (*cont'd*)

## CHAPTER 23 — CURRENT ADMINISTRATIVE EXPENDITURE

Article Item	Remarks
224	<i>(cont'd)</i>
2242	This appropriation is to cover : — members' allowances, — administration of parliamentary questions, — administration of committee work, — accounting.
2243	This appropriation covers expenditure connected with the development and maintenance of data-processing applications.
2244	Cost of accessing bibliographic data bases and data banks.
225	
2250	This appropriation is essential for the extension and renewal of general reference works and for keeping the library stock, in particular official publications, up to date, as well as for the acquisition of books in Greek.
2251	This appropriation is for the purchase of microforms and microfilms.
2252	This appropriation covers subscriptions to the more important newspapers and periodicals.
2253	This appropriation is to cover subscriptions to news agencies (250 000 ECU) and the cost of teleprinter messages (90 000 ECU).
230	This appropriation is for the purchase of paper, envelopes, office supplies, supplies for the printing shop, reproduction, etc.

## PARLIAMENT

## CHAPTER 23 — CURRENT ADMINISTRATIVE EXPENDITURE (cont'd)

Article Item	Heading	Appropriations 1983	Appropriations 1982	Outturn 1981
<b>2 3 1</b>	<b><i>Postal charges and telecommunications</i></b>			
2 3 1 0	Postage on correspondence and delivery charges	996 200	835 000	653 872,43
2 3 1 1	Telephone, telegraph, telex, television	2 775 000	1 550 000	1 878 152,32
	<i>Article 2 3 1 — Total</i>	3 771 200	2 385 000	2 532 024,75
<b>2 3 2</b>	<b><i>Financial charges</i></b>			
2 3 2 0	Bank charges	15 000	8 000	12 948,25
2 3 2 1	Exchange losses	p.m.	p.m.	310 000,—
2 3 2 9	Other financial charges	p.m.	p.m.	0,—
	<i>Article 2 3 2 — Total</i>	15 000	8 000	322 948,25
2 3 3	<i>Legal expenses</i>	54 000	50 000	26 566,21
2 3 4	<i>Damages</i>	p.m.	p.m.	54,46
2 3 5	<i>Other operating expenditure</i>			
2 3 5 0	Miscellaneous insurance	97 500	70 000	21 978,81

## PARLIAMENT

## CHAPTER 23 — CURRENT ADMINISTRATIVE EXPENDITURE (cont'd)

Article Item	Remarks														
231															
2310	<p>Breakdown of appropriation :</p> <table data-bbox="140 623 1402 805"> <tr> <td>— Luxembourg</td> <td style="text-align: right;">435 000</td> </tr> <tr> <td>— Strasbourg</td> <td style="text-align: right;">258 200</td> </tr> <tr> <td>— Brussels and elsewhere</td> <td style="text-align: right;">138 000</td> </tr> <tr> <td>— press offices</td> <td style="text-align: right;">150 000</td> </tr> <tr> <td>— packages, customs clearance</td> <td style="text-align: right;">15 000</td> </tr> <tr> <td style="text-align: right;">Total</td> <td style="text-align: right; border-top: 1px solid black;">996 200</td> </tr> </table> <p>Revenue for re-use is estimated at 60 000 ECU.</p>	— Luxembourg	435 000	— Strasbourg	258 200	— Brussels and elsewhere	138 000	— press offices	150 000	— packages, customs clearance	15 000	Total	996 200		
— Luxembourg	435 000														
— Strasbourg	258 200														
— Brussels and elsewhere	138 000														
— press offices	150 000														
— packages, customs clearance	15 000														
Total	996 200														
2311	<p>Breakdown of appropriation :</p> <table data-bbox="140 873 1402 1077"> <tr> <td>— telephone :</td> <td></td> </tr> <tr> <td>    — Luxembourg</td> <td style="text-align: right;">874 000</td> </tr> <tr> <td>    — Strasbourg</td> <td style="text-align: right;">792 000</td> </tr> <tr> <td>    — Brussels and elsewhere</td> <td style="text-align: right;">782 000</td> </tr> <tr> <td>    — press offices</td> <td style="text-align: right;">130 000</td> </tr> <tr> <td>— telex</td> <td style="text-align: right;">197 000</td> </tr> <tr> <td style="text-align: right;">Total</td> <td style="text-align: right; border-top: 1px solid black;">2 775 000</td> </tr> </table> <p>This appropriation takes account of the rise in charges and the increase in the number of calls. The revenue for re-use is estimated at 100 000 ECU.</p>	— telephone :		— Luxembourg	874 000	— Strasbourg	792 000	— Brussels and elsewhere	782 000	— press offices	130 000	— telex	197 000	Total	2 775 000
— telephone :															
— Luxembourg	874 000														
— Strasbourg	792 000														
— Brussels and elsewhere	782 000														
— press offices	130 000														
— telex	197 000														
Total	2 775 000														
233	<p>Appropriation to cover the various expenses and costs incurred as a result of legal proceedings.</p>														
235															
2350	<p>This item covers costs connected with insurance not specifically provided for under another heading. This appropriation is intended to pay for insurance premiums in respect of the transport of equipment (interpretation, television equipment, etc.) and also theft and loss insurance premiums for members and officials.</p>														

## PARLIAMENT

CHAPTER 23 — CURRENT ADMINISTRATIVE EXPENDITURE (*cont'd*)

## CHAPTER 24 — ENTERTAINMENT AND REPRESENTATION EXPENSES

Article Item	Heading	Appropriations 1983	Appropriations 1982	Outturn 1981
235	<i>(cont'd)</i>			
2351	Uniforms and working clothes	184 300	190 000	123 046,14
2352	Miscellaneous expenditure on internal meetings	173 000	120 000	112 228,35
2353	Departmental removals and associated handling	184 300	150 000	136 124,43
2354	Petty expenses	95 000	75 000	70 890,61
2359	Other operating expenditure	16 000	16 000	14 300,—
	<i>Article 235 — Total</i>	750 100	621 000	478 568,34
239	<i>Services rendered between institutions</i>			
2390	Services rendered by the Office for Official Publications	( <sup>1</sup> )	( <sup>2</sup> )	0,—
2391	Joint Interpreting Service	p.m.	p.m.	0,—
2393	Automated Legal Information Service	p.m.	p.m.	0,—
	<i>Article 239 — Total</i>	p.m.	p.m.	0,—
	<b>CHAPTER 23 — TOTAL</b>	6 112 300	4 520 000	4 602 687,74
	<b>CHAPTER 24</b>			
240	<i>Entertainment and representation expenses</i>			
2400	Entertainment and representation expenses for members of the institution	365 000	380 000	268 581,62
2401	Entertainment and representation expenses for staff	19 000	20 000	12 422,33

(<sup>1</sup>) Appropriations 1983 : (2 420 000 ECU).(<sup>2</sup>) Appropriations 1982 : (2 200 000 ECU).

## PARLIAMENT

CHAPTER 23 — CURRENT ADMINISTRATIVE EXPENDITURE (*cont'd*)

## CHAPTER 24 — ENTERTAINMENT AND REPRESENTATION EXPENSES

Article Item	Remarks
235	<i>(cont'd)</i>
2351	This appropriation is intended to cover : — the purchase of uniforms for ushers, messengers and drivers, — the purchase of working clothes, — maintenance and cleaning of clothing.
2352	This appropriation is to cover the cost of refreshments served at meetings of parliamentary bodies.
2354	This item covers expenditure on bus fares, various snacks, timetables, guides, etc., for which demand and costs are rising.
2359	This item covers the contribution to the secretarial expenses of the President's Office.
239	
2390	<i>Pro forma</i> entry to cover services of the Office for Official Publications. The actual appropriations to pay for the activities of the Office are entered in Annex II to Part A of Section III 'Commission' of the general budget.
2393	This item has been opened to meet a possible request from the Commission to the other institutions to participate in the costs of the automated Legal Information Service.
240	
2400	This appropriation is to cover the entire cost of receptions arranged by the institution (300 000 ECU), together with the purchase of medals and representational items (80 000 ECU).
2401	Receptions given by the Secretariat.

## PARLIAMENT

CHAPTER 24 — ENTERTAINMENT AND REPRESENTATION EXPENSES (*cont'd*)

## CHAPTER 25 — EXPENDITURE ON FORMAL AND OTHER MEETINGS

## CHAPTER 26 — EXPENDITURE ON STUDIES, SURVEYS AND CONSULTATIONS

Article Item	Heading	Appropriations 1983	Appropriations 1982	Outturn 1981
240	( <i>cont'd</i> )			
2402	Fund for expenses in accordance with Rule 18 of the Rules of Procedure of the European Parliament	20 000	20 000	18 000,—
	<i>Article 240 — Total</i>	404 000	420 000	299 003,95
	<b>CHAPTER 24 — TOTAL</b>	<b>404 000</b>	<b>420 000</b>	<b>299 003,95</b>
	<b>CHAPTER 25</b>			
250	<i>Meetings in general</i>	48 000	48 000	47 561,94
251	<i>Committee meetings</i>		—	0,—
255	<i>Miscellaneous expenditure on the organization of, and participation in, conferences, congresses and meetings</i>	342 000	342 000	284 615,09
	<b>CHAPTER 25 — TOTAL</b>	<b>390 000</b>	<b>390 000</b>	<b>332 177,03</b>
	<b>CHAPTER 26</b>			
260	<i>Limited consultations, studies and surveys</i>	30 000	30 000	109 727,41
	<b>CHAPTER 26 — TOTAL</b>	<b>30 000</b>	<b>30 000</b>	<b>109 727,41</b>

## PARLIAMENT

**CHAPTER 24 — ENTERTAINMENT AND REPRESENTATION EXPENSES (cont'd)****CHAPTER 25 — EXPENDITURE ON FORMAL AND OTHER MEETINGS****CHAPTER 26 — EXPENDITURE ON STUDIES, SURVEYS AND CONSULTATIONS**

Article Item	Remarks
250	This appropriation is to cover the travel, subsistence and incidental expenses of experts and other persons invited to take part in committee, study group or working party meetings.
255	<p>The appropriations under this article cover in particular expenditure connected with the organization of meetings outside the places of work, which are growing in number.</p> <p>The appropriation covers :</p> <ul style="list-style-type: none"> <li>— hire of room and equipment,</li> <li>— refreshments,</li> <li>— telephone, postage,</li> <li>— local transport,</li> <li>— sundries.</li> </ul>
260	Appropriation to cover contracting studies out to qualified experts.

## PARLIAMENT

## CHAPTER 27 — EXPENDITURE ON PUBLISHING AND INFORMATION

Article Item	Heading	Appropriations 1983	Appropriations 1982	Outturn 1981
	<b>CHAPTER 27</b>			
270	<i>Official Journal</i>	3 811 700	2 772 000	2 609 379,07
271	<i>Publications</i>			
2710	General publications	4 269 000	3 589 500	3 064 271,21
2719	Expenditure on publicity and promotion of publications	1 450 000	350 000	259 992,26
	<i>Article 271 — Total</i>	5 719 000	3 939 500	3 324 263,47
272	<i>Expenditure on the dissemination of information and on participation in public events</i>			
2720	Expenditure on information, publicity and participation in public events	950 000	790 000	702 069,77
2721	Participation of the Communities in international exhibitions	p.m.	1 000	0,—
	<i>Article 272 — Total</i>	950 000	791 000	702 069,77
	<b>CHAPTER 27 — TOTAL</b>	10 480 700	7 502 500	6 635 712,31



## PARLIAMENT

## CHAPTER 27 — EXPENDITURE ON PUBLISHING AND INFORMATION

Article Item	Remarks
270	This appropriation covers the costs of printing the texts which Parliament is required to publish in the <i>Official Journal of the European Communities</i> in application of its Rules of Procedure (Rules 17, 36 and 45) and of the Rules of Procedure of the ACP-EEC Consultative Assembly (budgets, written questions, minutes, notices).
271	
2710	This appropriation is to cover the cost of publishing the report of proceedings (provisional 'rainbow' edition and final edition in seven languages), the annual indexes to these reports, the report of proceedings of the ACP-EEC Consultative Assembly (3 561 600 ECU) and documents which the Directorate-General for Research and Documentation intends to issue (707 400 ECU).
2719	This is expenditure for the publication of information material other than that printed by the Secretariat's own services. This appropriation is required to cover the cost of producing the monthly publication 'European Parliament', the basic brochure, specialized leaflets and other publications as well as the electoral campaign.
272	
2720	<p>This appropriation is to cover expenditure arising from :</p> <ul style="list-style-type: none"> <li>— the organization of press conferences and invitations to journalists to attend part-sessions of the European Parliament, contributions to the operating costs of the International Press Centre in Brussels, European journalists' associations, etc.</li> <li>— certain activities in the audio-visual sector.</li> </ul> <p>These activities relate to photography, cinematography, radio and television work as part of the normal activities of the service (films, development and reproduction costs, slides, purchase of photographs, magnetic tapes, purchase of recordings made by various broadcasting stations, technical participation in the work of certain broadcasting stations, etc.).</p>

## PARLIAMENT

## CHAPTER 29 — SUBSIDIES AND FINANCIAL CONTRIBUTIONS

Article Item	Heading	Appropriations 1983	Appropriations 1982	Outturn 1981
	CHAPTER 29			
290	<i>Subsidies to higher education institutions</i>	p.m.	p.m.	0,—
294	<i>Study grants</i>			
2940	Research and study grants	110 000	100 000	71 475,86
2941	Grants for further training of conference interpreters	58 000	58 000	50 000,26
2949	Grants for nationals of non-member countries	230 000	210 000	129 687,51
	<i>Article 294 — Total</i>	398 000	368 000	251 163,63
299	<i>Other subsidies</i>			
2990	Subsidies and financial contributions towards the cost of group visits	1 850 000	1 700 000	1 420 759,24
2991	Subsidies towards the cost of visits by 'opinion multipliers' from the Member States	460 000	420 000	290 000,—
	<i>Article 299 — Total</i>	2 310 000	2 120 000	1 710 759,24
	<b>CHAPTER 29 — TOTAL</b>	<b>2 708 000</b>	<b>2 488 000</b>	<b>1 961 922,87</b>
	<b>Title 2 — Total</b>	<b>55 110 400</b>	<b>48 122 450</b>	<b>44 278 305,58</b>

## CHAPTER 29 — SUBSIDIES AND FINANCIAL CONTRIBUTIONS

Article Item	Remarks
294	
2940	Robert Schuman scholarships granted to young persons from universities for research work within the Directorate-General for Research and Documentation, having regard to travel expenses previously charged to Item 1 2 1 1.
2949	This appropriation covers : — the scholarships granted to young nationals of the North American and Latin American countries, — the financing of cultural projects of European interest and study grants to young nationals of the Member States.
299	
2990	Subsidies granted for group visits during and between part-sessions and the refund of expenses incurred during study visits. Account has been taken of the increase in transport charges and the higher costs associated with groups of Greek visitors.
2991	Subsidies granted for visits by 'opinion multipliers' from the Member States, such as teaching staff, journalists, leading members of social and professional groups, representatives of political, trade union and industrial organizations, etc.

## PARLIAMENT

## TITLE 3

## EXPENDITURE RESULTING FROM SPECIAL FUNCTIONS CARRIED OUT BY THE INSTITUTION

## CHAPTER 37 — EXPENDITURE RELATING TO CERTAIN INSTITUTIONS AND BODIES

Article Item	Heading	Appropriations 1983	Appropriations 1982	Outturn 1981
	<b>CHAPTER 37</b>			
<b>370</b>	<b><i>Special expenditure of the European Parliament</i></b>			
<b>3700</b>	Expenditure on interparliamentary institutions stipulated in the ACP-EEC Convention of Lomé	880 000	800 000	661 993,16
<b>3701</b>	Expenditure on the Joint Parliamentary Committee provided for within the framework of the association with Greece	—	—	0,—
<b>3702</b>	Expenditure on the Joint Parliamentary Committee provided for within the framework of the association with Turkey	p.m.	p.m.	0,—
<b>3704</b>	Expenditure on interparliamentary contacts set up under the association with Malta	28 000	28 000	0,—
<b>3705</b>	Contribution to secretarial expenses of the political groups of the European Parliament	4 321 000	3 957 000	3 881 500,—
<b>3706</b>	Other political activities	2 125 680	1 946 600	1 853 900,—
<b>3707</b>	Expenditure on contacts between members of the European Parliament and members of the parliaments of third countries	200 000	200 000	323 022,37
<b>3708</b>	Contribution to the costs of preparations for the next European elections	7 000 000	p.m.	0,—
	<i>Article 370 — Total</i>	14 554 680	6 931 600	6 720 415,53
	<b>CHAPTER 37 — TOTAL</b>	14 554 680	6 931 600	6 720 415,53
	<b>Title 3 — Total</b>	14 554 680	6 931 600	6 720 415,53

## TITLE 3

## EXPENDITURE RESULTING FROM SPECIAL FUNCTIONS CARRIED OUT BY THE INSTITUTION

## CHAPTER 37 — EXPENDITURE RELATING TO CERTAIN INSTITUTIONS AND BODIES

Article Item	Remarks								
<b>370</b>									
3700	<p>This covers all the expenditure on the annual session of the ACP-EEC Consultative Assembly and the meetings of the Joint Committee.</p> <p>Breakdown of appropriation:</p> <table style="width: 100%; border-collapse: collapse;"> <tr> <td style="width: 80%;">— members</td> <td style="text-align: right;">440 000</td> </tr> <tr> <td>— staff</td> <td style="text-align: right;">320 000</td> </tr> <tr> <td>— overheads</td> <td style="text-align: right;">120 000</td> </tr> <tr> <td style="text-align: right;"><b>Total</b></td> <td style="text-align: right; border-top: 1px solid black;"><b>880 000</b></td> </tr> </table>	— members	440 000	— staff	320 000	— overheads	120 000	<b>Total</b>	<b>880 000</b>
— members	440 000								
— staff	320 000								
— overheads	120 000								
<b>Total</b>	<b>880 000</b>								
3702	The corresponding appropriations are entered in Chapter 10 0 'Provisional appropriations'.								
3705	This contribution consists of a fixed minimum amount per group and a variable amount depending on the number of members and languages used.								
3706	This appropriation is to cover activities other than those financed from Item 3705 (2 125 680 ECU) as well as the political activities of the non-attached members (p.m.).								
3707	<p>This appropriation covers expenditure (overheads: hire of room and equipment, local transport, sundries) arising from the more numerous contacts with members of Parliament from third countries, in particular Spain, Portugal, Yugoslavia, Tunisia, Israel, USA, Canada, Latin America, etc.</p> <p>This appropriation could cover similar expenditure on exceptional contacts with members of Parliament from countries with which no agreement exists at present.</p>								
3708	This appropriation is to cover a contribution to the cost of preparations for the information campaign leading up to the second direct elections in 1984. The Bureau of the European Parliament will lay down the conditions governing this expenditure.								

## PARLIAMENT

## TITLE 10

## OTHER EXPENDITURE

## CHAPTER 10 0 — PROVISIONAL APPROPRIATIONS

## CHAPTER 10 1 — CONTINGENCY RESERVE

Article Item	Heading	Appropriations 1983	Appropriations 1982	Outturn 1981
1000	CHAPTER 10 0	1 895 000	7 230 000	0,—
1001		—	—	0,—
	CHAPTER 10 0 — TOTAL	1 895 000	7 230 000	0,—
1010	CHAPTER 10 1	3 680 000	2 000 000	0,—
1011		—	—	0,—
	CHAPTER 10 1 — TOTAL	3 680 000	2 000 000	0,—
	Title 10 — Total	5 575 000	9 230 000	0,—
	GRAND TOTAL	227 818 110	209 229 150	172 015 294,82

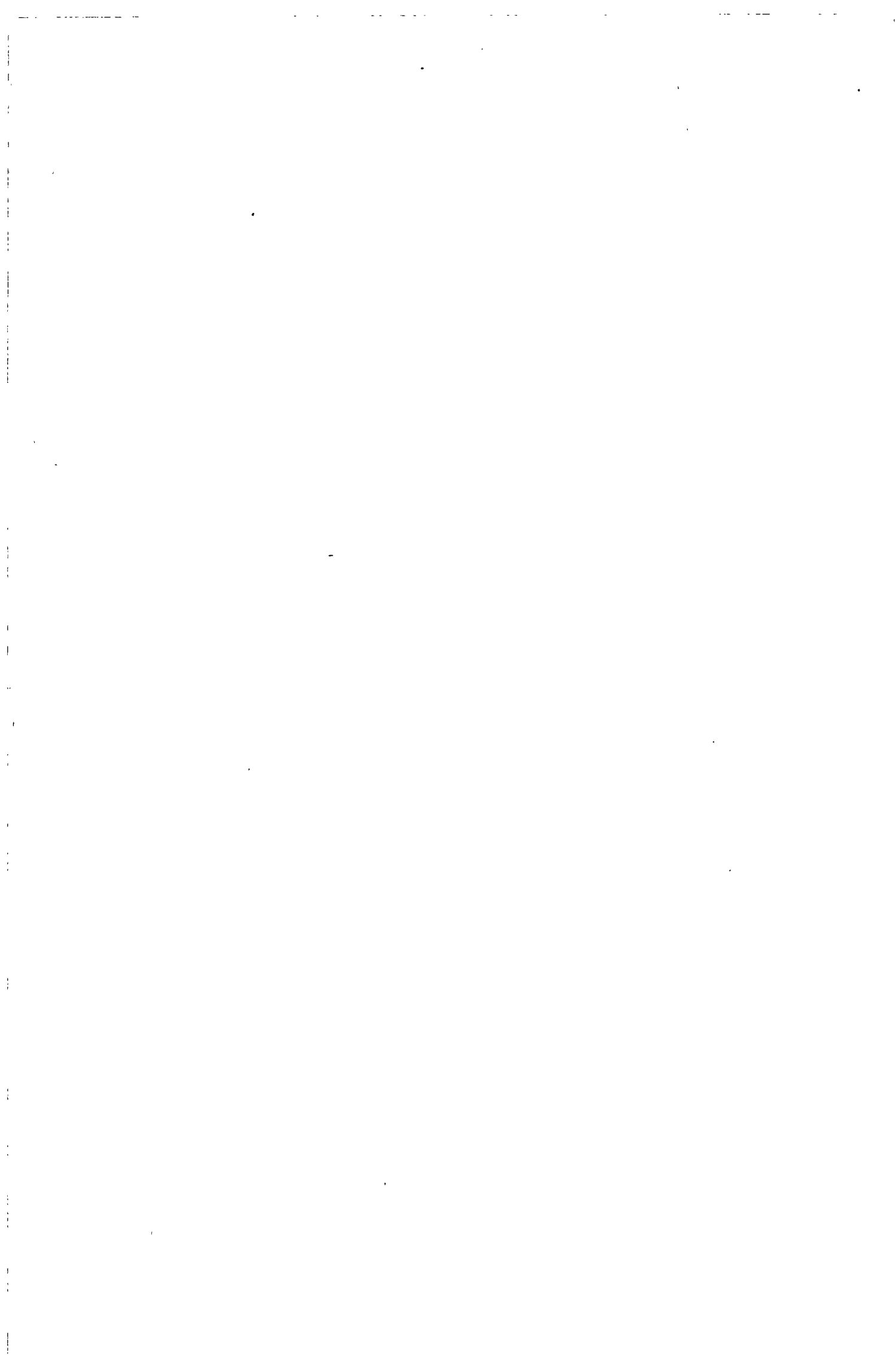
TITLE 10

OTHER EXPENDITURE

CHAPTER 10 0 — PROVISIONAL APPROPRIATIONS

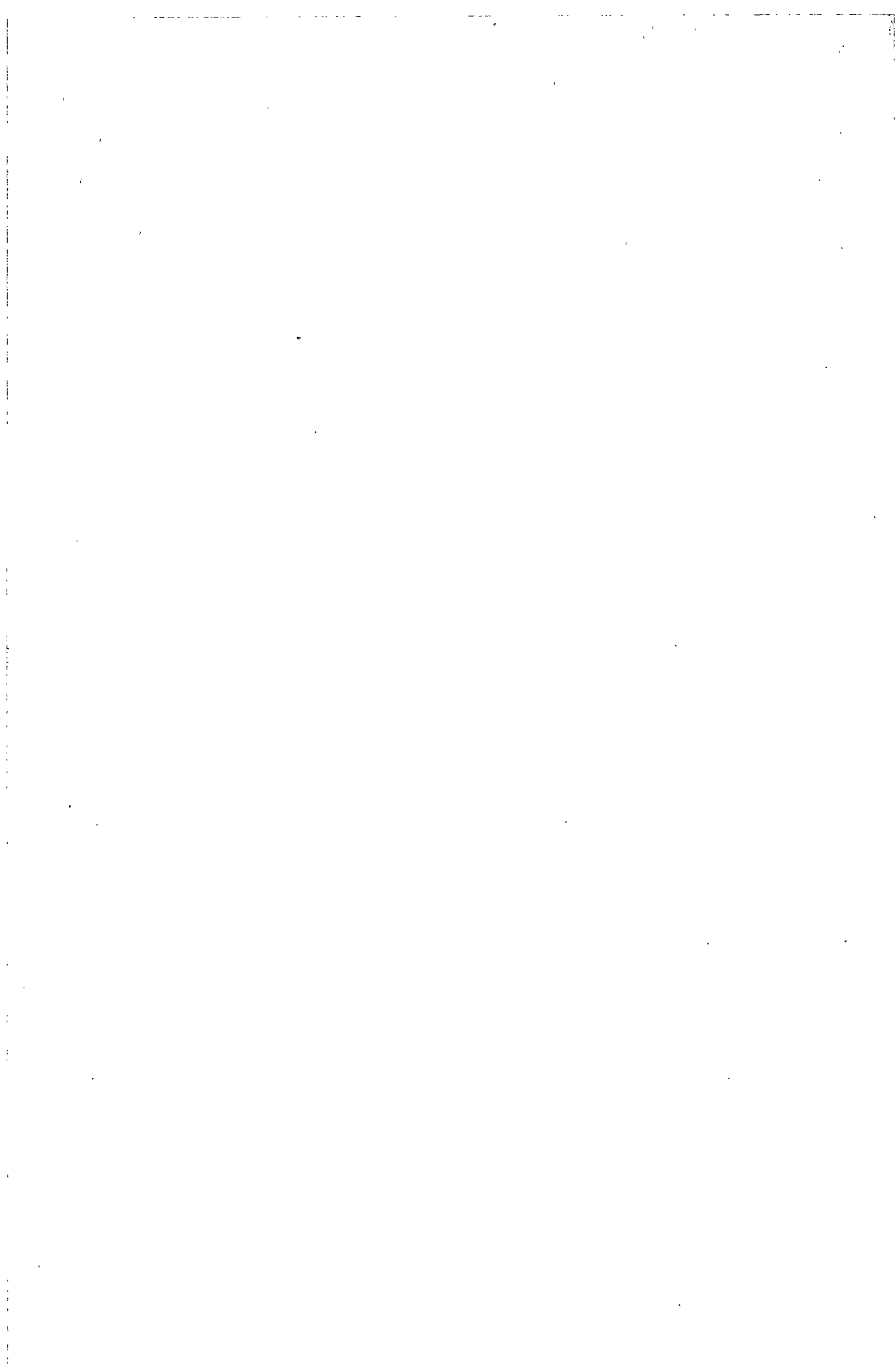
CHAPTER 10 1 — CONTINGENCY RESERVE

Article Item	Remarks	
<b>10 0 0</b>	A reserve must be entered to cover possible needs relating to expenditure for the following articles and items:	
Chapter 1 0	Members of the institution	350 000
Chapters 1 4, 1 5 and 1 6	Expenditure on social welfare	320 000
Article 2 2 4	Equipment, operating costs and services relating to data-processing	1 000 000
Item 3 7 0 2	Expenditure for the Joint Parliamentary Committee provided for within the framework of the association with Turkey	225 000
	<b>Total</b>	<b>1 895 000</b>
<b>10 1 0</b>	This is a general reserve for unforeseeable expenditure.	

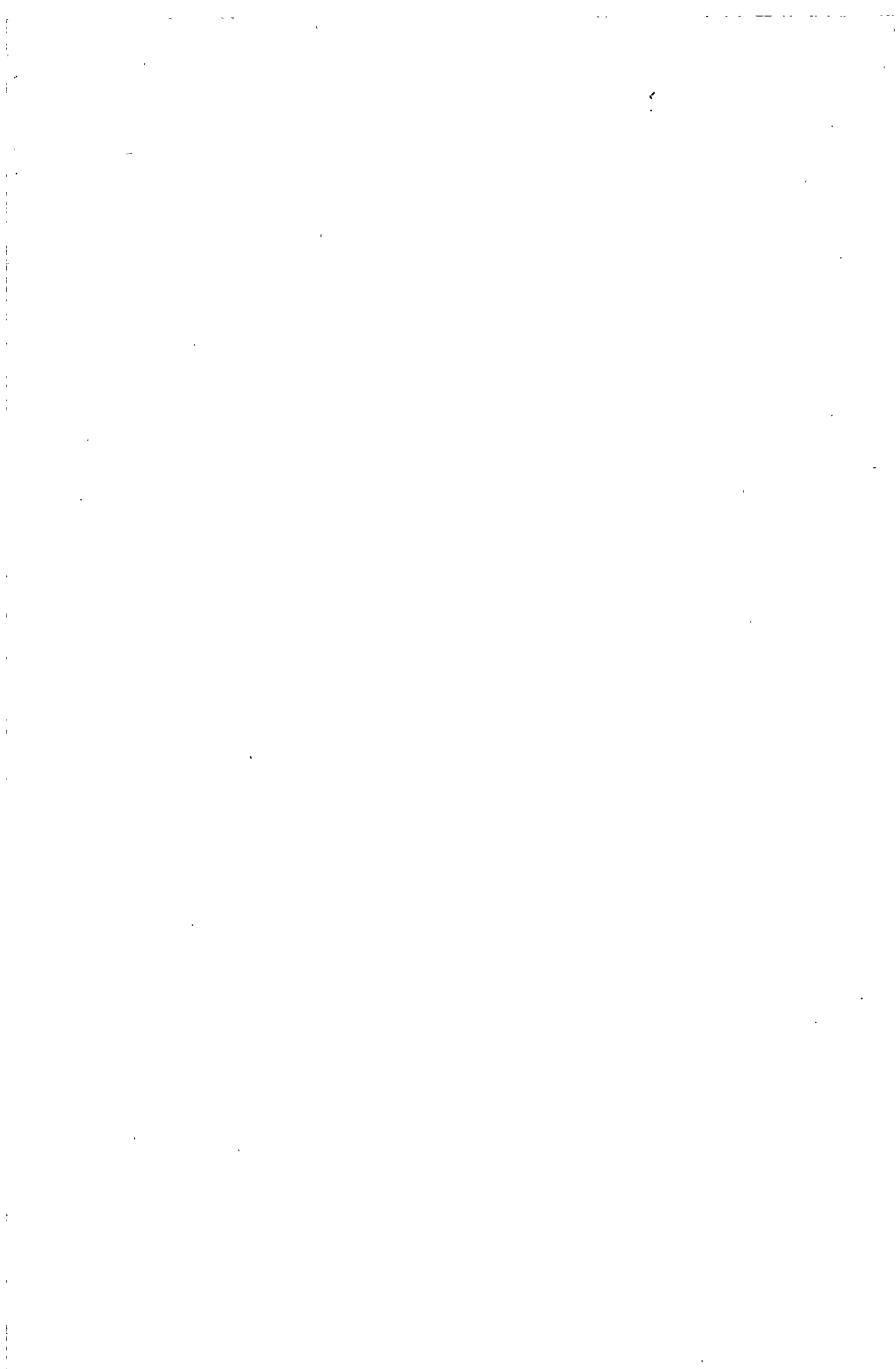


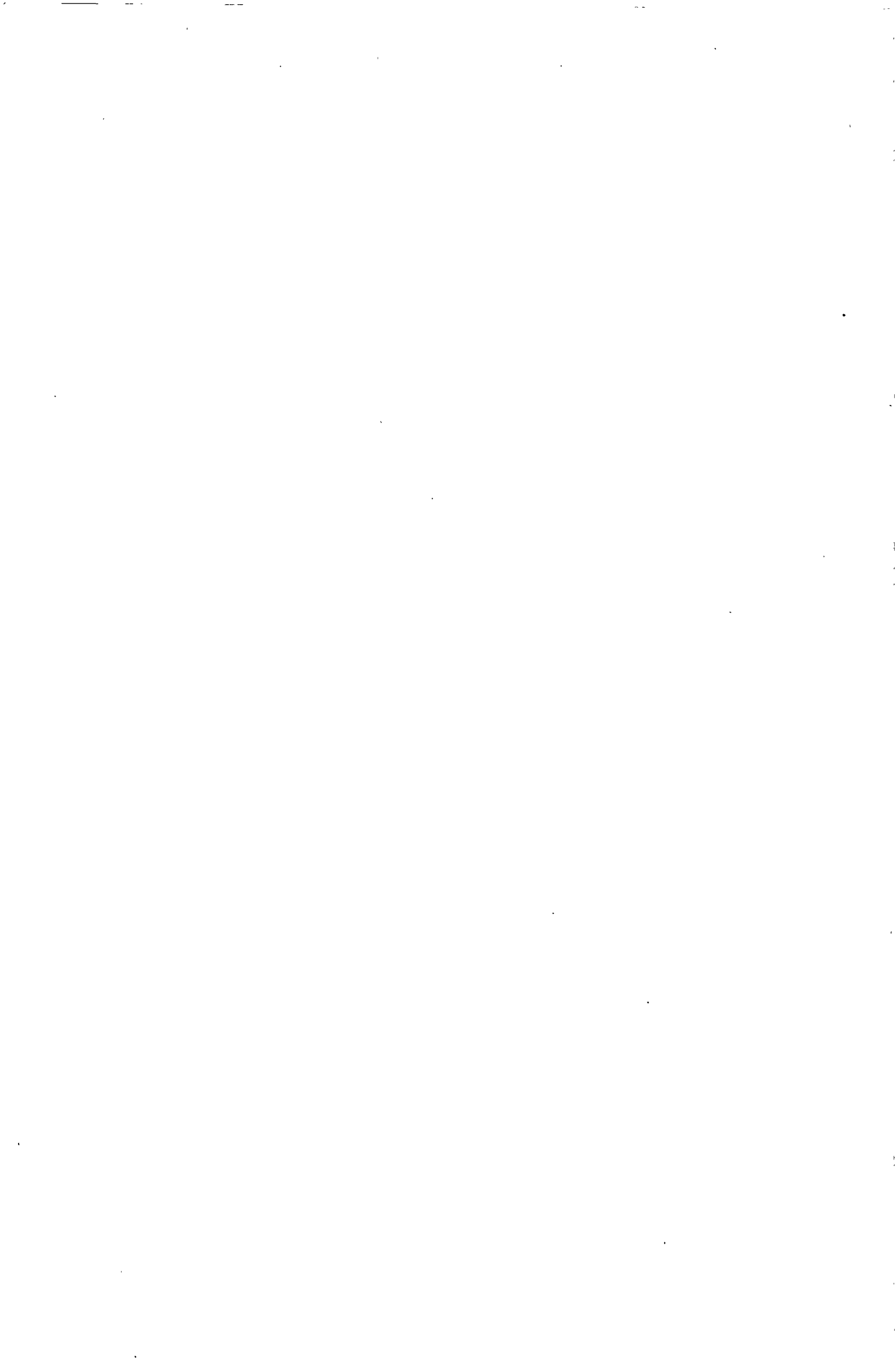


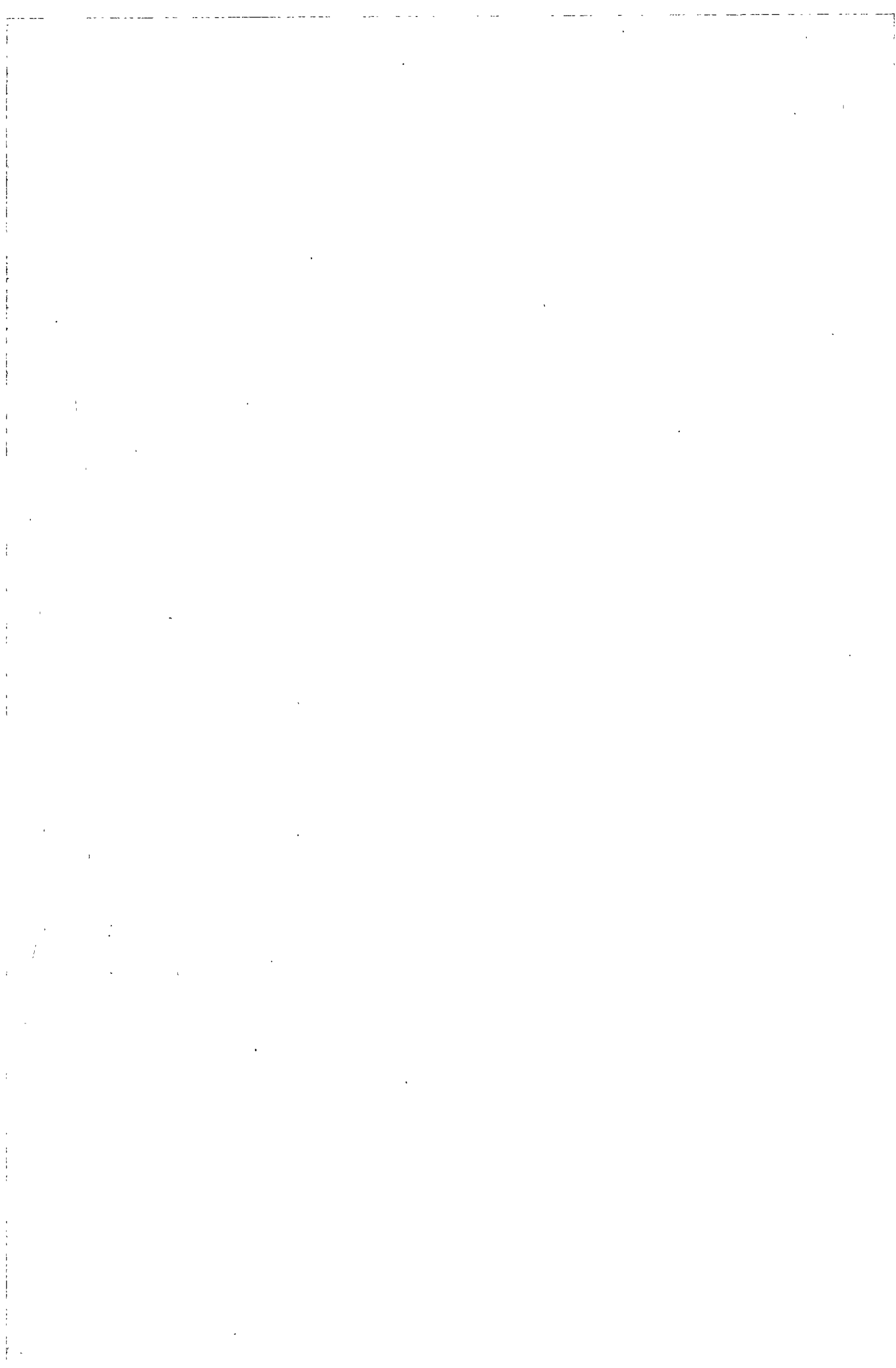


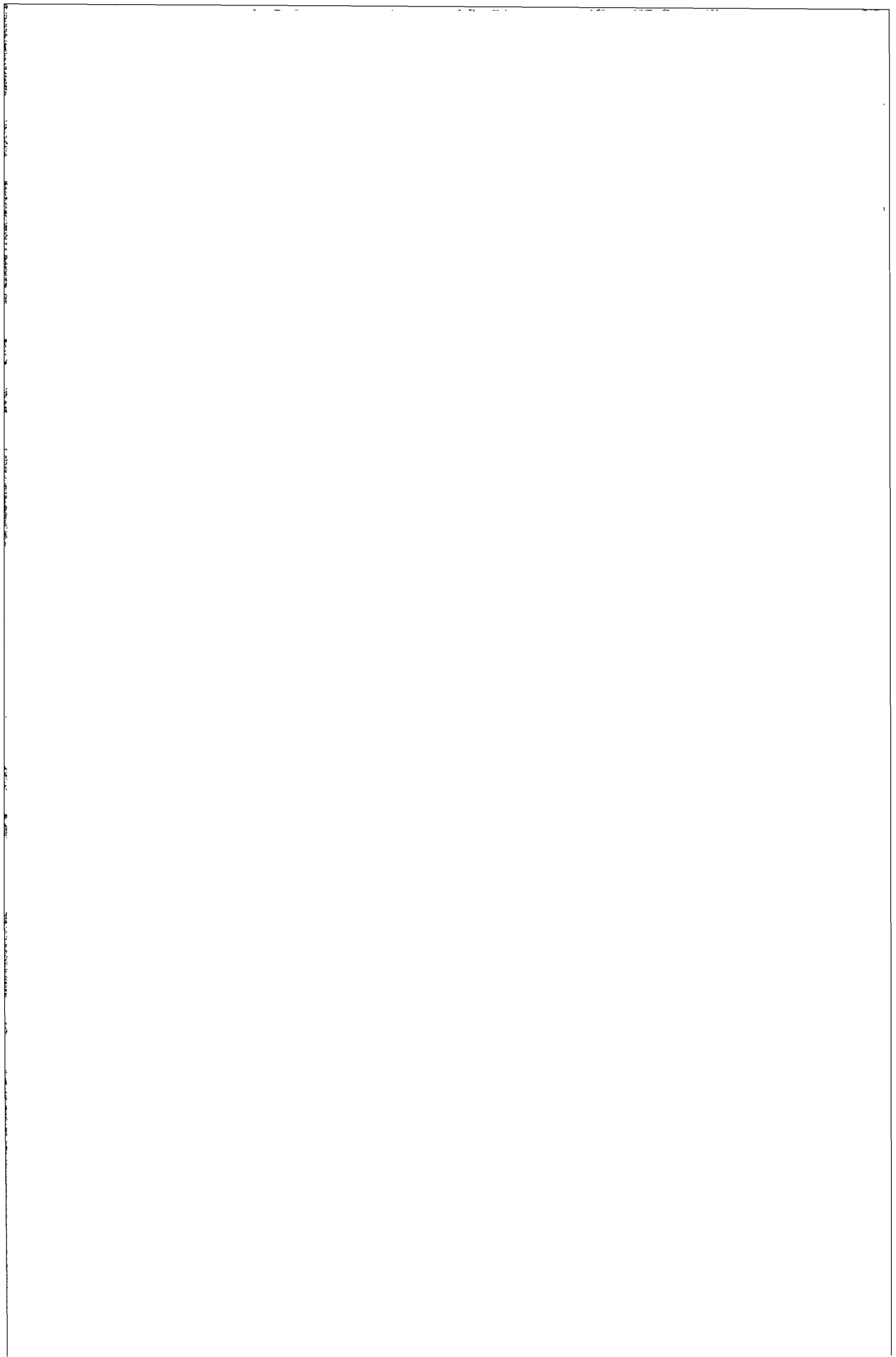


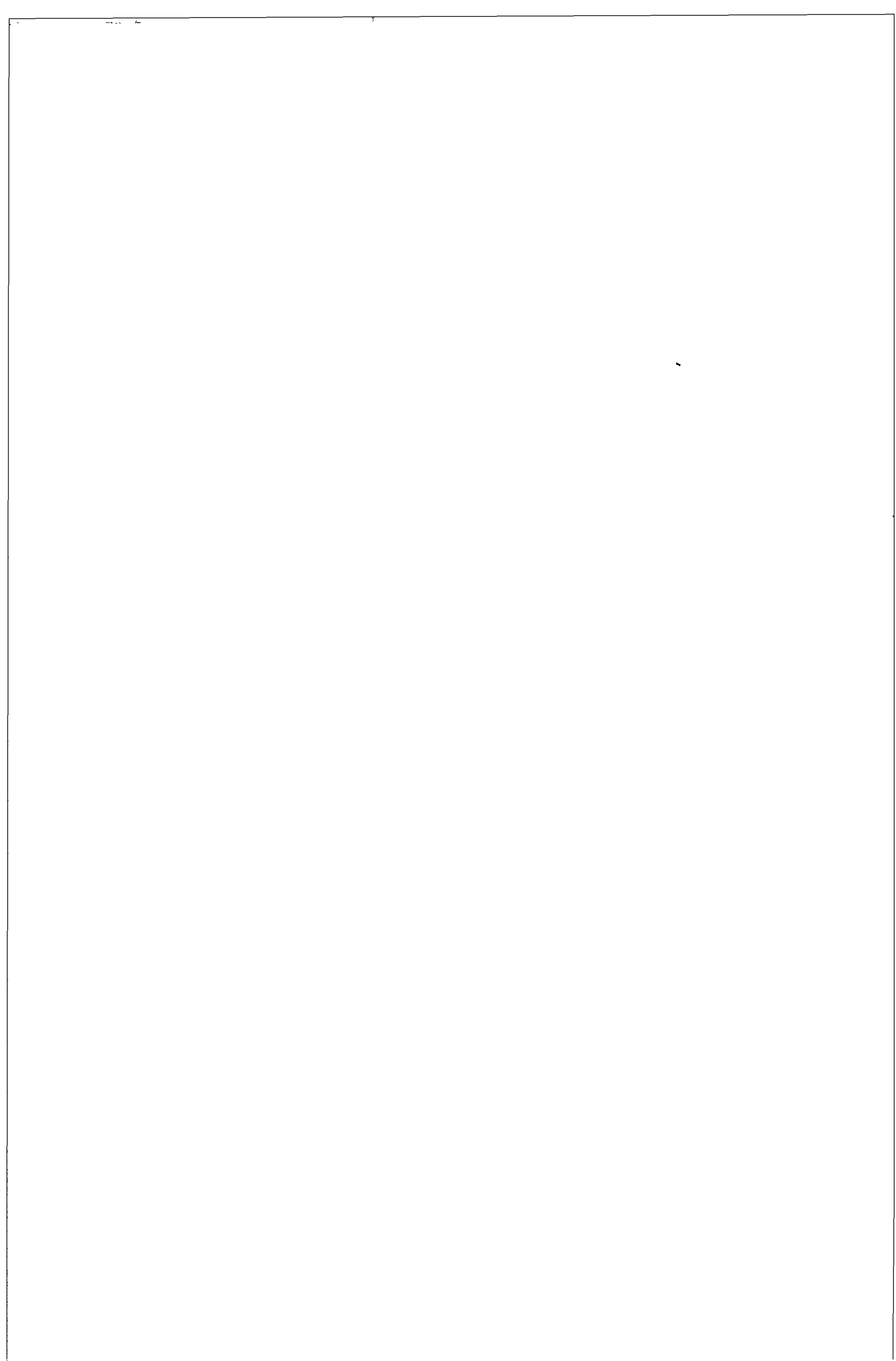














Staff authorized for 1983

Category and grade	Permanent		Temporary	
				Political groups
Non-category	1	-	-	-
A 1	8	-	1	-
A 2	17 <sup>1</sup>	-	1	7
A 3	59	-	3	8
A 4	47	2	2	25
A 5	36	-	2	21
A 6	55	10	-	45
A 7	56	-	4	18
A 8	-	-	-	-
<b>Total</b>	<b>278</b>	<b>12</b>	<b>13</b>	<b>124</b>
B 1	80	1	1	12
B 2	67	3	-	14
B 3	77	-	1	14
B 4	110	8	1	-
B 5	58	-	-	-
<b>Total</b>	<b>392</b>	<b>12</b>	<b>3</b>	<b>40</b>
C 1	291 <sup>2</sup>	2	2	29
C 2	342	26	11	52
C 3	347	-	3	43
C 4	110	-	-	7
C 5	-	-	-	-
<b>Total</b>	<b>1 090</b>	<b>28</b>	<b>16</b>	<b>131</b>
D 1	110	-	2	-
D 2	104	-	-	-
D 3	105	-	-	-
D 4	-	-	-	-
<b>Total</b>	<b>319</b>	<b>-</b>	<b>2</b>	<b>-</b>
LA 3	25	1	-	-
LA 4	150 <sup>3</sup>	-	-	-
LA 5	154	-	-	-
LA 6	86	-	-	-
LA 7	64	-	-	-
LA 8	-	-	-	-
<b>Total</b>	<b>479<sup>4</sup></b>	<b>1</b>	<b>-</b>	<b>-</b>
<b>Grand Total</b>	<b>2 559</b>	<b>53<sup>5</sup></b>	<b>34<sup>6</sup></b>	<b>295</b>
			<b>2 941</b>	

<sup>1</sup> including 1 A 2 ad personam

<sup>2</sup> including 2 B 3 ad personam

<sup>3</sup> including 1 LA 3 ad personam

<sup>4</sup> of which 362 for translation and 117 for interpreting

<sup>5</sup> reserve authorized for secondment to political groups

<sup>6</sup> including 14 in the President's office, 12 for the secretariat of the Vice-Presidents, 2 for the Staff Committee and 6 for DG IV



# European Communities

---

EUROPEAN PARLIAMENT

# Working Documents

1982-1983

---

5 May 1982

DOCUMENT 1-186/82

## Report

drawn up on behalf of the Committee on Agriculture

on the proposal from the Commission of the  
European Communities to the Council (Doc. 1-124/82 -  
COM(82) 148 final) for a regulation on the  
conclusion of the Agreement on the regulation of  
fisheries in the Skagerrak and the Kattegat in  
1982 between the European Economic Community,  
Norway and Sweden

Rapporteur: Ms. Joyce QUIN

PE 78.423/fin.



By letter of 14 April 1982 the President of the Council of the European Communities requested the European Parliament, pursuant to Article 43 of the EEC Treaty, to deliver an opinion on the proposal from the Commission of the European Communities to the Council for a regulation on the conclusion of the Agreement on the regulation of fisheries in the Skagerrak and the Kattegat in 1982 between the European Economic Community, Norway and Sweden.

The president of the European Parliament referred this proposal to the Committee on Agriculture as the committee responsible.

On 27 April 1982, the Committee on Agriculture appointed Ms Joyce Quin rapporteur.

The committee considered the Commission proposal and the draft report at its meeting of 27/28 April 1982.

At the same meeting the committee unanimously decided to recommend that Parliament should adopt the Commission's proposal without amendment.

The committee then unanimously adopted the motion for a resolution as a whole.

Present for the vote: Mr Delatte, vice-chairman and acting chairman, Mr Colleselli, vice-chairman; Mr Abens (deputizing for Ms Joyce Quin), Mr Adamou, Mr Battersby, Mr Blaney, Mrs Castle, Mr Clinton, Mr Dalsass, Mr Davern, Mr Gatto, Mr Gautier, Mr Goerens (deputizing for Mr Maher), Mr Helms, Mrs Herklotz, Mr Jakobsen (deputizing for Mr Bocklett), Mr Kaloyannis, Mr Jonker (deputizing for Mr Tolman), Mr Maffre-Baugé, Mr M. Martin (deputizing for Mr Pranchère), Mr Mouchel, Mr Newton Dunn (deputizing for Mr Kirk), Mr d'Ormesson, Mrs Pery (deputizing for Mr Eyraud), Mrs Pauwelyn (deputizing for Mrs S. Martin), Mr Provan, Mr Thareau, Mr Vgenopoulos, Mr Wettig and Mr Woltjer.

The explanatory statement will be presented orally.



The Committee on Agriculture hereby submits to the European Parliament the following motion for a resolution:

MOTION FOR A RESOLUTION

closing the procedure for consultation of the European Parliament on the proposal from the Commission of the European Communities to the Council for a regulation on the conclusion of the Agreement on the regulation of fisheries in the Skagerrak and the Kattegat in 1982 between the European Economic Community, Norway and Sweden

The European Parliament,

- A. having regard to the proposal from the Commission of the European Communities to the Council<sup>1</sup> (COM(82) 148 final),
  - B. having been consulted by the Council pursuant to Article 43 of the EEC Treaty (Doc. 1-124/82),
  - C. having regard to the report of the Committee on Agriculture (Doc. 1-186/82),
  - D. having regard to the result of the vote on the proposal from the Commission,
  - E. whereas the agreement reached between the Community, Norway and Sweden on their mutual fishing rights in the Skagerrak and the Kattegat for 1982 safeguards the fishing activities of the fishermen concerned,
  - F. whereas the quotas allocated to the Community are based on traditional fishing activities,
1. Approves the Commission's proposal authorizing the conclusion of the abovementioned agreement;
  2. Requests further details of how the TACs for 1982 have been established;
  3. Calls on the Commission to investigate the inter-relationship between the herring stock in the Skagerrak and Kattegat and the herring stock in Zone IV(b) of the North Sea;
  4. Asks to be regularly informed of the state of negotiations on the conclusion of a similar agreement in 1983 prior to the conclusion of this agreement;

5. Instructs its President to forward to the Commission and the Council the proposal from the Commission as voted by Parliament and the corresponding resolution as Parliament's opinion.

---

<sup>1</sup>OJ No C 97 of 17.4.1982, p. 3



Species	Area <sup>1</sup>	TAC 1982	Allocation to Norway	Allocation to Sweden	Allocation to EEC
Cod	S	20,000	650 <sup>2</sup>	2,850	16,500
Haddock	S + K	9,500	400	900	8,200
Whiting	S	4,650	400	400	3,850
Plaice	S	10,000	200	400	9,400
Herring	S + K	60,000	8,000	26,000	26,000
Mackerel	S + K	-	_3	_4	-
Sprat	S + K	77,000	9,500 <sup>5</sup>	19,500	48,000

<sup>1</sup>Skagerrak (S): the area defined in Art. 1 of the Agreement of 19 December 1966 Skagerrak and Kattegat ( S + K): the area defined in Art. 1 of the Agreement of 19 December 1966 extended to the southern boundary of Kattegat defined as a straight line from Hasenøre Hoved to Gniben Odde, from Korshage to Spodsbjerg and from Gillberg Hoved to Kullen

<sup>2</sup>This quantity does not include catches to be taken with passive gear inside the baselines

<sup>3</sup>Part of Norway's quota in the North Sea may be fished in the Skagerrak by vessels not exceeding 90 feet

<sup>4</sup>The Swedish coastal fisheries for mackerel may continue at the same level as in 1981

<sup>5</sup>Including sprat in the Norwegian fjords north of Lindesnes and south of 62°N

