



STATISTISCHES TELEGRAMM

STATISTICAL TELEGRAM

TELEGRAMME STATISTIQUE

Orig. french

STATISTICAL ASPECTS OF THE NATURAL GAS ECONOMY IN 1982

The provisional data for 1982 reveal that total requirements of natural gas fell by 6%, which resulted in an 8.8% decline in Community production and a fall in imports from third party countries, something which had never happened before in external trade in natural gas.

Supply structure

- The fall in production mainly affected the Netherlands (-13.9%) and the Federal Republic of Germany (-12.8%). As a result, Dutch exports of natural gas to other Community countries fell sharply by 17.2% in 1982, as compared with a fall of 11.1% in 1981.
- Imports from third party countries similarly fell by 2% which includes a drop of 14.5% in the United Kingdom imports and 8.3% in the Federal Republic of Germany, though there was a rise of 15.4% in Italy. For the Community as a whole, the breakdown of main supplier countries was as follows: 46.6% from Norway, 40.0% from the USSR and 13.2% from Algeria. This breakdown shows an increase of 5% over the 1981 figure in the case of Algerian gas, with a corresponding 3% fall for Norwegian gas and a 2% fall for Russian gas.
- Nevertheless, in spite of the fall in imports from third party countries, the share of these imports in total availabilities increased by 1.3%. Demand continues to be satisfied principally by indigenous gas, which accounts for 71.4%.

Consumption trends

An initial analysis of sectoral consumption trends in 1982 shows that the 6% fall may be partly explained by the substitution of natural gas by residual fuel oil or coal in state-owned power stations, and partly by the mild winter weather. In particular, this factor has made it possible to economize on the Community's resources of Dutch natural gas.

EUROSTAT

L-2920 LUXEMBOURG, TEL 43011

3.3.1983

ENERGIESTATISTIK

ENERGY STATISTICS

STATISTIQUES DE L ENERGIE

ANNUEL

1983

NATURGAS EUR 10
1000 TJ(HO)

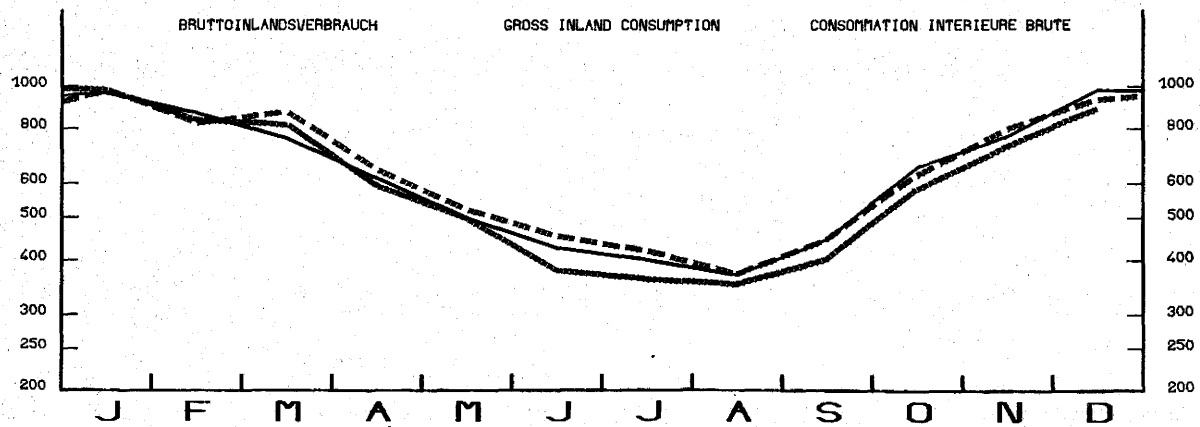
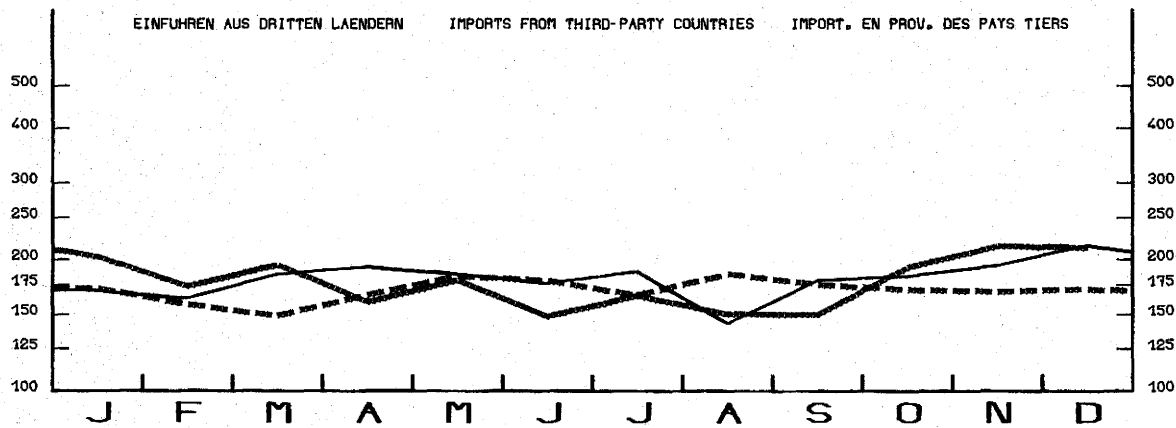
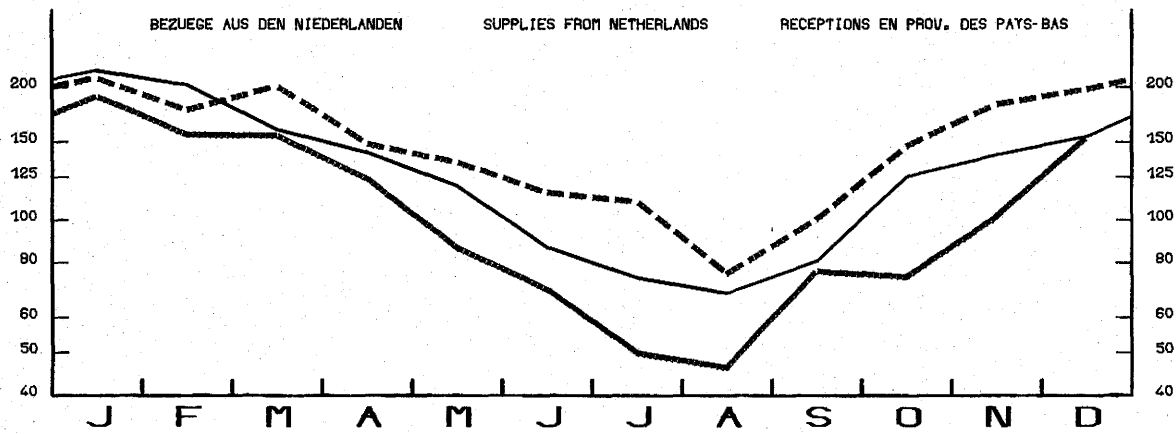
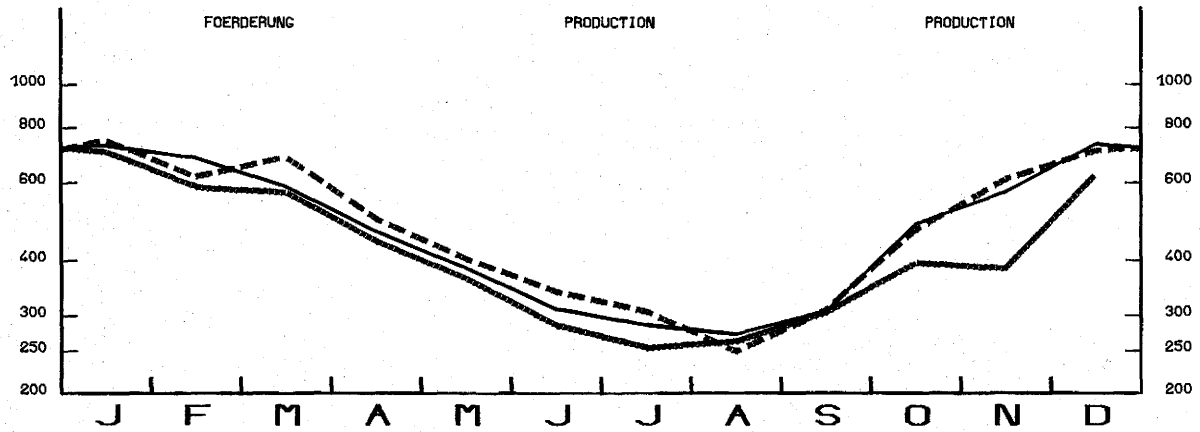
NATURAL GAS EUR 10
1000 TJ(GCV)

GAZ NATUREL EUR 10
1000 TJ (PCS)

----- 1980

————— 1981

————— 1982



NATURGAS

NATURAL GAS

GAZ NATUREL

Vorläufige Angaben 1982

Provisional data 1982

Résultats provisoires 1982

	EUR 10	BR Deutschland	France	Italia	Nederland	Belgique België	Luxembourg	United Kingdom	Ireland
Gewinnung				Production			Production		
1 000 Terajoule (Ho)				1 000 Terajoule (GCV)			1 000 Térajoules (PCS)		
1980	6 013,4	667,6	294,2	477,3	3 101,6	1,5	-	1 436,9	34,3
1981	5 826,0	673,1	276,9	534,9	2 833,8	1,3	-	1 453,9	52,2
1982	5 311,2	587,2	257,3	556,3	2 439,8	1,3	-	1 392,9	76,4
1981/80	- 3,1%	+ 0,8%	- 5,9%	+ 12,1%	- 8,6%	- 13,3%	-	+ 1,2%	+ 52,2%
1982/81	- 8,8%	- 12,8%	- 7,1%	+ 4,0%	- 13,9%	-	-	- 4,2%	+ 46,4%

	Bezüge aus der Gemeinschaft (1)			Supplies from the Community (1)			Réceptions en prov. de la Communauté (1)		
1 000 Terajoule (Ho)				1 000 Terajoule (GCV)			1 000 Térajoules (PCS)		
1980	1 756,0	795,7	359,7	252,7	-	328,1	19,7	-	-
1981	1 561,4	662,0	340,9	246,3	-	297,0	15,1	-	-
1982	1 293,6	617,9	243,4	187,1	-	232,5	12,7	-	-
1981/80	- 11,1%	- 16,8%	- 5,2%	- 2,5%	-	- 9,5%	- 23,4%	-	-
1982/81	- 17,2%	- 6,7%	- 28,6%	- 24,0%	-	- 21,7%	- 15,9%	-	-

	Einfuhren aus Drittländern			Imports from third-party countries			Importations en prov. des pays tiers		
1 000 Terajoule (Ho)				1 000 Terajoule (GCV)			1 000 Térajoules (PCS)		
1980	2 043,4	719,8	391,7	294,6	133,2	85,5	-	418,6	-
1981	2 132,1	729,4	468,6	282,9	117,9	86,0	-	447,3	-
1982	2 092,4	668,8	503,3	326,4	119,2	92,1	-	382,6	-
1981/80	+ 4,3%	+ 1,3%	+ 19,6%	- 4,0%	- 11,5%	+ 0,6%	-	+ 6,9%	-
1982/81	- 1,9%	- 8,3%	+ 7,4%	+ 15,4%	+ 1,1%	+ 7,1%	-	- 14,5%	-

	VERFÜGBARKEIT *)			GAS AVAILABLE *)			DISPONIBILITÉS *)		
1 000 Terajoule (Ho)				1 000 Terajoule (GCV)			1 000 Térajoules (PCS)		
1980	7 900,1	2 090,2	1 045,6	1 024,6	1 415,1	415,1	19,7	1 855,5	34,3
1981	7 807,1	1 957,9	1 086,4	1 064,1	1 345,8	384,3	15,1	1 901,2	52,2
1982	7 328,9	1 790,5	1 004,0	1 069,8	1 274,1	325,9	12,7	1 775,5	76,4
1981/80	- 1,2%	- 6,3%	+ 3,9%	+ 3,9%	- 4,9%	- 7,4%	- 23,4%	+ 2,5%	+ 52,2%
1982/81	- 6,1%	- 8,5%	- 7,6%	+ 0,5%	- 5,3%	- 15,2%	- 15,9%	- 6,6%	+ 46,4%

	Anteil gedeckt von			Proportion accounted for by			Part couverte par		
- binnenländischem Gas				- indigenous gas			- le gaz indigène		
1980	74,1%	29,3%	28,1%	46,6%	90,6%	0,3%	-	77,4%	100%
1981	72,7%	30,8%	25,5%	50,3%	91,2%	0,3%	-	76,5%	100%
1982	71,4%	30,1%	25,6%	52,0%	90,6%	0,4%	-	78,5%	100%
	- Bezüge aus der Gemeinschaft (1)			- Supplies from the Community (1)			- Réceptions en prov. de la Communauté (1)		
1980	39,3%	38,1%	34,4%	24,7%	(90,6%)	79,1%	100%	-	-
1981	36,3%	33,8%	31,4%	23,1%	(91,2%)	77,3%	100%	-	-
1982	33,3%	34,5%	24,3%	17,5%	(90,6%)	71,3%	100%	-	-
	- Einfuhren aus Drittländern			- Imports from third-party countries			- Importations en prov. des pays tiers		
1980	25,9%	32,6%	37,5%	28,7%	9,4%	20,6%	-	22,6%	-
1981	27,3%	35,4%	43,1%	26,6%	8,8%	22,4%	-	23,5%	-
1982	28,6%	35,4%	50,1%	30,5%	9,4%	28,3%	-	21,5%	-

*) Gewinnung + Einfuhren - Ausfuhren

(1) Bezüge aus den Niederlanden und der BR Deutschland

*) Production + imports - exports

(1) Supplies from the Netherlands and FR Germany

*) Production + importations - exportations

(1) Réceptions en prov. des Pays Bas et RF d'Allemagne

NATURGAS

NATURAL GAS

GAZ NATUREL

Einfuhren aus Drittländern

Imports from third-party countries

Importations en prov. des pays tiers

1000 Terajoules (Ho)

1000 Terajoule (GCV)

1000 Térjoules (PCS)

	EUR 10	BR Deutschland	France	Italia	Nederland	Belgique Belgie	United Kingdom
--	--------	-------------------	--------	--------	-----------	--------------------	-------------------

1980

NORWAY	1 050,4	51,4%	340,6	104,8	-	133,2	85,5	386,3
USSR	859,4	42,1%	379,2	204,7	243,2	-	-	32,3
ALGERIA	82,2	4,0%	-	82,2	-	-	-	-
LIBYA	51,4	2,5%	-	-	51,4	-	-	-
OTHERS	-	-	-	-	-	-	-	-
TOTAL	2 043,4	100%	719,8	391,7	294,6	133,2	85,5	418,6

1981

NORWAY	1 052,9	49,4%	313,0	105,8	-	117,9	86,0	430,2
USSR	901,0	42,3%	416,4	201,7	282,9	-	-	-
ALGERIA	178,2	8,3%	-	161,1	-	-	-	17,1
LIBYA	-	-	-	-	-	-	-	-
OTHERS	-	-	-	-	-	-	-	-
TOTAL	2 132,1	100%	729,4	468,6	282,9	117,9	86,0	447,3

1982

NORWAY	975,7	46,6%	299,6	96,5	-	119,2	78,5	381,9
USSR	837,0	40,0%	369,5	143,5	324,3	-	-	-
ALGERIA	276,5	13,2%	-	262,2	-	-	13,6	0,7
LIBYA	2,1	0,1%	-	-	2,1	-	-	-
OTHERS	1,1	0,1%	-	1,1	-	-	-	-
TOTAL	2 092,4	100%	668,8	503,3	326,4	119,2	92,1	382,6