

Farm structure in Italy – 2005

42% of the holders are aged 65 or more

This Statistics in Focus is part of a series of country-specific publications on the results of the Farm Structure Survey (FSS) 2005. It provides a brief but nevertheless comprehensive insight into the farm structure in Italy. A similar publication was issued in March 2005 presenting the results of the FSS 2003 in Italy.

* * *

At the end of 2005 in Italy, about **1.38 million*** agricultural holdings had an economic size of at least 1 European Size Unit (ESU).

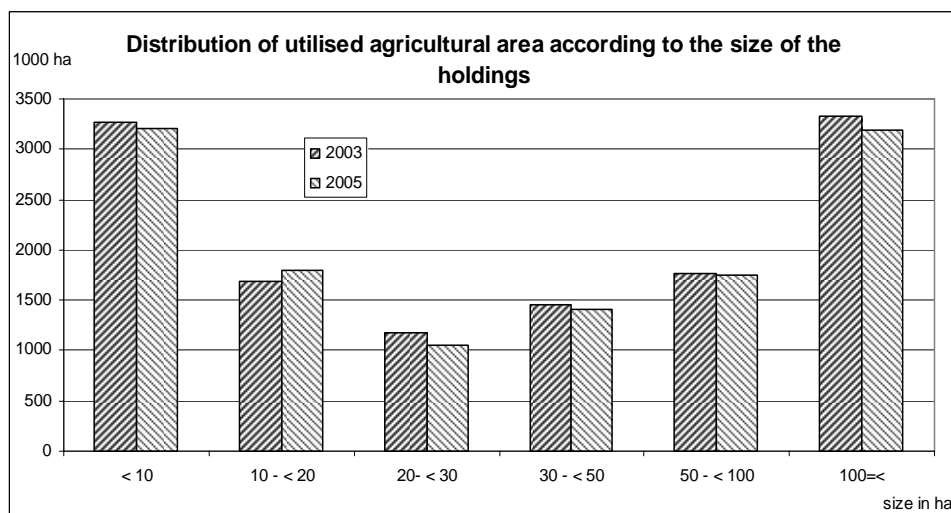
- These holdings employed 1.27 million AWUs (annual work units), the equivalent of 1.27 million thousand persons working full time;
- they made use of about 12.4 million ha of agricultural area, which is on average **9 ha per holding** (compared to 8.2 ha in 2003).

Among these 1.38 million agricultural holdings

- 64% made use of less than one AWU, while 12% made use of 2 or more AWUs;
- 67% used less than 5 ha agricultural area, while 1% used 100 ha or more;
- 19% were holdings of the type specialist olives, 15% specialist cereals, oil seed and protein crops, 12% specialist vineyards, 10% were engaged in mixed cropping and 10% were general field cropping;
- 50% of their agricultural area was situated in less favoured or mountain areas;
- 3% were organic farms;
- 25% were producing mainly for their own consumption;
- 15% benefited from direct investment aid.

Among the 1.35 million sole holders

- 30% were women;
- 65% were aged 55 or more, and only 4% were younger than 35 years;
- 23% had another gainful activity as their major occupation.



Due to differences in the threshold across Member States, the total number of farms is not comparable between countries. This is why the present analysis, including Tables 1-4 and the graphs focus on holdings of at least one ESU. See methodological notes for more information on the concept of the ESU.

Statistics in focus

AGRICULTURE AND FISHERIES

22/2007

Agriculture

Authors

György BENOIST

PoI MARQUER

Contents

Table 1 – Labour force by size of the farms.....3

Table 2 – Agricultural holdings by size.....4

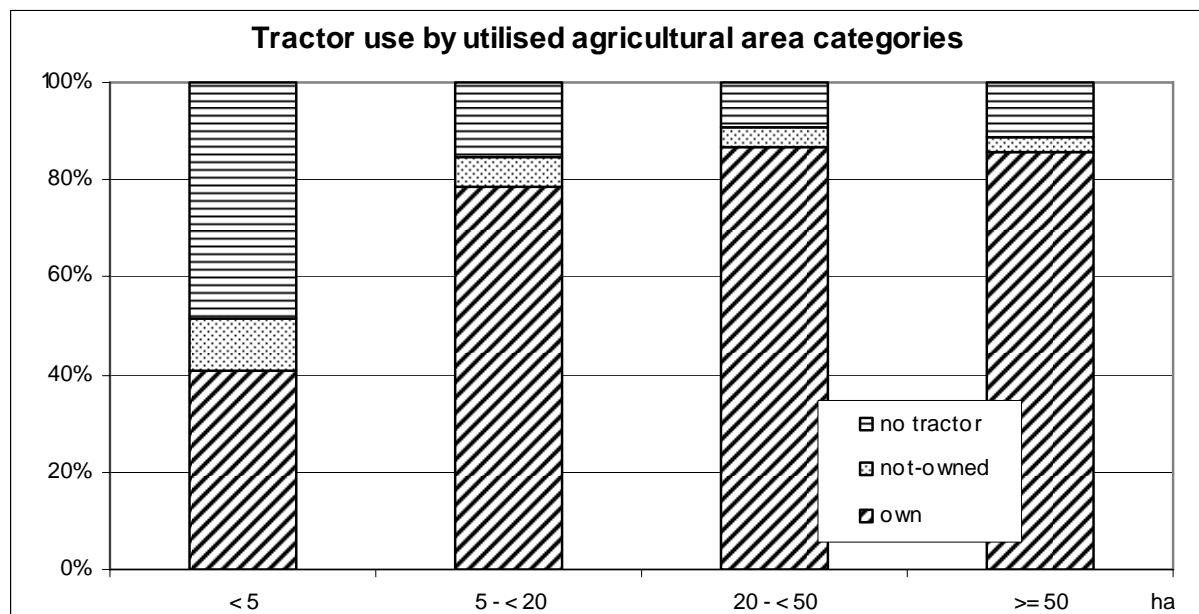
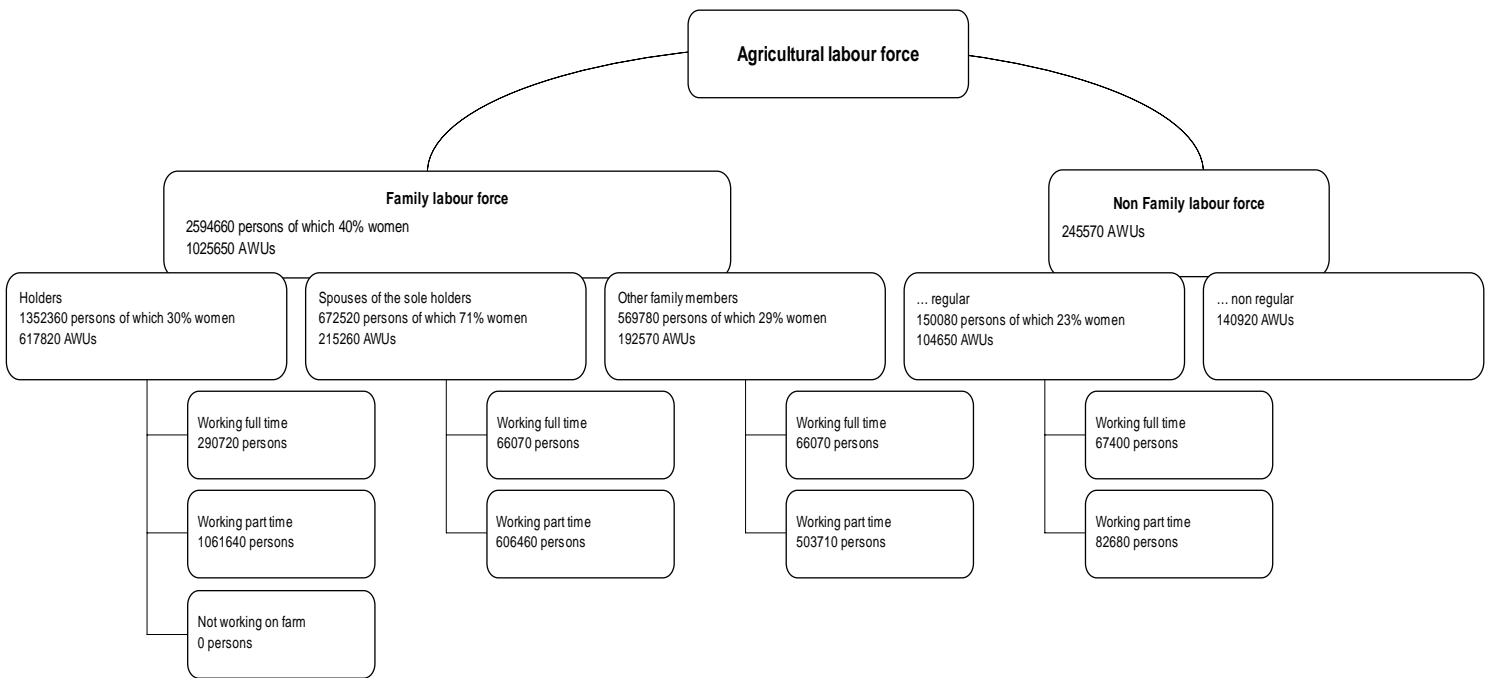
Table 3 – Land use by size of the farms.....5

Table 4 – Livestock by size of the farms.....6

Table 5 – Subsistence farming...7



Italy 2005 – Holdings of at least 1 ESU



| Size of the farms | Agricultural area (ha) | | | | All farms | Livestock (LU*) | | | |
|---|------------------------|--------------|-------------|-------------|---------------|-----------------|--------------|--------------|-------------|
| | < 5 | 5 - < 20 | 20 - < 50 | 50 = < | | 0 | 0 < - < 5 | 5 - < 50 | 50 = < |
| Total labour force | | | | | | | | | |
| 1000 annual work units | 593.4 | 402.9 | 148.8 | 126.1 | 1271.2 | 856.6 | 140.6 | 168.5 | 105.5 |
| Family labour force | | | | | | | | | |
| 1000 persons | 1709.3 | 661.4 | 158.2 | 65.9 | 2594.7 | 2021.9 | 285.5 | 216.1 | 71.2 |
| 1000 annual work units | 535.6 | 337.9 | 103.5 | 48.7 | 1025.7 | 679.7 | 132.9 | 154.2 | 58.8 |
| Non-family labour regularly employed | | | | | | | | | |
| 1000 persons | 31.7 | 33.6 | 31.0 | 53.8 | 150.1 | 96.1 | 4.4 | 9.5 | 40.0 |
| 1000 annual work units | 17.8 | 21.7 | 23.1 | 42.0 | 104.7 | 59.7 | 2.5 | 7.1 | 35.3 |
| Non regular non family labour force | | | | | | | | | |
| 1000 annual work units | 39.9 | 43.3 | 22.2 | 35.5 | 140.9 | 117.2 | 5.1 | 7.2 | 11.4 |
| Holding managers (1000) | 928.6 | 332.1 | 81.0 | 38.6 | 1380.3 | 1109.3 | 136.2 | 100.1 | 34.7 |
| - women (%) | 29.2 | 25.2 | 14.5 | 10.8 | 26.9 | 27.2 | 32.9 | 21.6 | 7.4 |
| - part-time - under 50 % (%) | 74.9 | 42.3 | 22.0 | 18.3 | 62.4 | 70.8 | 47.2 | 10.2 | 4.4 |
| - 50 % and over(%) | 13.2 | 20.8 | 18.5 | 14.3 | 15.4 | 14.7 | 24.2 | 14.1 | 6.7 |
| - with a basic agricult. training only (%) | 90.2 | 90.8 | 88.7 | 83.2 | 90.0 | 90.0 | 90.0 | 92.1 | 85.4 |
| - with a full agricultural training (%) | 2.2 | 5.0 | 8.3 | 15.2 | 3.6 | 3.4 | 1.7 | 4.8 | 12.5 |
| Sole/main holders (1000) | 922.8 | 325.1 | 74.6 | 29.8 | 1352.4 | 1091.0 | 135.4 | 98.1 | 27.9 |
| - women (%) | 31.8 | 27.4 | 17.7 | 14.1 | 29.6 | 29.9 | 35.2 | 23.6 | 9.2 |
| - distribution by age (%) | | | | | | | | | |
| - under 35 years | 2.6 | 5.5 | 8.6 | 9.6 | 3.8 | 3.3 | 3.1 | 8.5 | 11.8 |
| - from 35 to 44 years | 9.6 | 14.5 | 21.3 | 22.8 | 11.7 | 10.6 | 10.5 | 22.0 | 27.1 |
| - from 45 to 54 years | 18.9 | 18.8 | 21.7 | 25.0 | 19.2 | 18.5 | 18.8 | 24.5 | 28.3 |
| - from 55 to 64 years | 24.1 | 22.8 | 22.0 | 19.9 | 23.6 | 23.8 | 22.9 | 23.2 | 18.5 |
| - 65 years and over | 44.8 | 38.4 | 26.4 | 22.7 | 41.7 | 43.8 | 44.8 | 21.9 | 14.2 |
| - part-time - under 50 % (%) | 75.4 | 43.2 | 23.9 | 23.7 | 63.7 | 71.9 | 47.5 | 10.4 | 5.4 |
| - 50 % and over(%) | 13.3 | 21.2 | 20.1 | 18.5 | 15.7 | 14.9 | 24.4 | 14.4 | 8.4 |
| - with another gainful activity ¹ (%) | 31.9 | 20.9 | 16.0 | 17.0 | 28.0 | 30.4 | 21.7 | 15.9 | 9.0 |
| - as main occupation | 27.5 | 15.5 | 8.3 | 6.6 | 23.0 | 25.9 | 16.8 | 6.2 | 2.4 |
| - as a subsidiary occupation | 4.4 | 5.4 | 7.7 | 10.5 | 5.0 | 4.5 | 4.8 | 9.7 | 6.6 |
| Spouse of sole holder working on the holding (1000) | 452.3 | 170.0 | 37.8 | 12.4 | 672.5 | 510.6 | 88.7 | 56.8 | 16.4 |
| - women (%) | 69.4 | 71.9 | 80.0 | 86.7 | 71.0 | 71.3 | 66.9 | 69.2 | 88.8 |
| - distribution by age (%) | | | | | | | | | |
| - under 35 years | 2.3 | 3.8 | 6.7 | 7.3 | 3.0 | 2.6 | 2.9 | 5.3 | 8.4 |
| - from 35 to 54 years | 34.3 | 40.5 | 49.7 | 57.9 | 37.2 | 35.4 | 33.1 | 52.2 | 64.0 |
| - 55 years and over | 63.3 | 55.7 | 43.6 | 34.8 | 59.8 | 62.0 | 64.0 | 42.5 | 27.6 |
| - part-time - under 50 % (%) | 86.9 | 68.3 | 53.9 | 46.9 | 79.6 | 85.8 | 73.9 | 45.0 | 34.8 |
| - 50 % and over(%) | 7.6 | 16.2 | 18.1 | 20.7 | 10.6 | 8.3 | 15.3 | 21.0 | 20.3 |
| - with another gainful activity (%) | 28.4 | 25.8 | 21.6 | 23.2 | 27.3 | 27.5 | 26.6 | 29.0 | 15.8 |
| Other members of the holder's family working on the holding (1000) | 334.1 | 166.2 | 45.9 | 23.6 | 569.8 | 420.3 | 61.4 | 61.1 | 26.9 |
| - women (%) | 30.2 | 28.5 | 27.6 | 24.8 | 29.3 | 28.5 | 36.3 | 29.6 | 24.8 |
| - part-time - under 50 % (%) | 88.6 | 69.7 | 51.6 | 34.8 | 77.9 | 84.5 | 78.3 | 55.2 | 24.3 |
| - 50 % and over(%) | 7.2 | 13.9 | 17.3 | 20.5 | 10.5 | 9.1 | 9.5 | 18.5 | 17.3 |
| - with another gainful activity (%) | 53.6 | 40.4 | 29.3 | 20.2 | 46.4 | 50.0 | 49.6 | 33.1 | 14.6 |

Symbols : not available 0 less than half of the unit or nil

* LU = Livestock Unit

¹ Refers only to holders who are also farm managers.

| Size of the farms | Agricultural area (ha) | | | | All farms | Livestock (LU) | | | |
|--|------------------------|----------|-----------|-------|-----------|----------------|----------|----------|-------|
| | < 5 | 5 - < 20 | 20 - < 50 | 50 =< | | 0 | 0 <- < 5 | 5 - < 50 | 50 =< |
| Holdings | | | | | | | | | |
| - total number (1000) | 928.6 | 332.1 | 81.0 | 38.6 | 1380.3 | 1109.3 | 136.2 | 100.1 | 34.7 |
| - by legal personality of the holder (%) | | | | | | | | | |
| - sole holder | 99.4 | 97.9 | 92.1 | 77.3 | 98.0 | 98.3 | 99.4 | 98.0 | 80.5 |
| - legal person | 0.6 | 2.1 | 7.9 | 22.7 | 2.0 | 1.7 | 0.6 | 2.0 | 19.5 |
| - group holders | 0.0 | 0.0 | 0.0 | 0.0 | 0.0 | 0.0 | 0.0 | 0.0 | 0.0 |
| - by employed labour force (%) | | | | | | | | | |
| - under 1 AWU | 77.7 | 43.0 | 21.9 | 12.8 | 64.2 | 73.1 | 48.6 | 8.7 | 1.7 |
| - from 1 to less than 2 AWU | 17.9 | 37.1 | 40.0 | 31.4 | 24.2 | 19.3 | 41.4 | 54.7 | 24.4 |
| - from 2 to less than 3 AWU | 3.3 | 15.5 | 22.5 | 24.0 | 8.0 | 5.2 | 7.6 | 29.1 | 36.6 |
| - 3 AWU and over | 1.1 | 4.5 | 15.6 | 31.8 | 3.6 | 2.3 | 2.3 | 7.5 | 37.4 |
| - by economic size (%) | | | | | | | | | |
| - from 1 to less than 8 ESU | 84.7 | 35.4 | 6.4 | 2.3 | 66.0 | 70.2 | 78.4 | 24.4 | 0.7 |
| - from 8 to less than 16 ESU | 9.9 | 29.1 | 14.6 | 5.2 | 14.7 | 13.9 | 12.9 | 30.0 | 1.8 |
| - from 16 to less than 40 ESU | 3.9 | 26.5 | 45.0 | 20.4 | 12.2 | 10.7 | 6.8 | 36.0 | 11.4 |
| - from 40 to less than 100 ESU | 1.1 | 7.5 | 24.5 | 36.7 | 5.0 | 3.7 | 1.5 | 8.8 | 49.5 |
| - 100 ESU and over | 0.3 | 1.6 | 9.4 | 35.4 | 2.1 | 1.4 | 0.4 | 0.7 | 36.5 |
| - by farm type (%) | | | | | | | | | |
| - specialist olives | 26.1 | 6.5 | 2.4 | 2.3 | 19.3 | 22.7 | 10.4 | 0.7 | 0.1 |
| - specialist cereals, oil seed and protein crops | 11.7 | 22.2 | 23.3 | 21.3 | 15.2 | 17.3 | 10.6 | 3.7 | 0.4 |
| - specialist vineyard | 13.3 | 10.8 | 3.4 | 2.8 | 11.8 | 14.1 | 4.8 | 0.4 | 0.1 |
| - mixed cropping | 9.8 | 12.8 | 8.8 | 6.7 | 10.4 | 9.2 | 24.8 | 6.3 | 1.4 |
| - general field cropping | 8.6 | 13.0 | 14.7 | 12.4 | 10.1 | 11.1 | 10.7 | 1.4 | 0.9 |
| - other types of farming | 30.4 | 34.7 | 47.3 | 54.5 | 33.1 | 25.5 | 38.6 | 87.4 | 97.1 |
| - by farming methods (%) | | | | | | | | | |
| - organic farming | 1.7 | 4.3 | 6.3 | 10.4 | 2.8 | 2.6 | 2.1 | 5.4 | 5.9 |
| - irrigating | 29.7 | 38.3 | 40.9 | 44.3 | 32.8 | 31.8 | 32.9 | 34.5 | 60.4 |
| - with fixed irrigation equipment | 13.7 | 18.4 | 15.0 | 16.1 | 15.0 | 16.2 | 8.4 | 9.8 | 18.1 |
| - with crops under glass | 2.6 | 1.5 | 1.2 | 0.8 | 2.2 | 2.6 | 1.2 | 0.6 | 0.7 |
| - benefiting of direct investment aids | 9.1 | 23.6 | 34.2 | 44.5 | 15.1 | 12.2 | 17.0 | 33.8 | 46.2 |
| - using a tractor (%) | | | | | | | | | |
| - with their own tractor | 40.7 | 78.4 | 86.8 | 85.5 | 53.7 | 48.3 | 67.1 | 82.1 | 93.8 |
| - using a combine harvester (%) | 14.9 | 34.5 | 45.3 | 48.2 | 22.3 | 20.2 | 27.3 | 30.9 | 45.9 |
| - with another gainful activity than agricultural production (%) | | | | | | | | | |
| - tourism | 0.4 | 1.7 | 2.1 | 4.1 | 0.9 | 0.5 | 1.5 | 3.9 | 1.9 |
| - handicraft | 0.0 | 0.1 | 0.1 | 0.1 | 0.1 | 0.1 | 0.0 | 0.0 | 0.1 |
| - processing of farm products | 4.9 | 6.1 | 9.1 | 11.8 | 5.6 | 4.4 | 9.7 | 12.9 | 8.2 |
| - wood processing | 0.0 | 0.1 | 0.1 | 0.1 | 0.1 | 0.1 | 0.0 | 0.1 | 0.1 |
| - aquaculture | 0.0 | 0.0 | 0.0 | 0.1 | 0.0 | 0.0 | 0.0 | 0.0 | 0.1 |
| - renewable energy production | 0.0 | 0.0 | 0.0 | 0.1 | 0.0 | 0.0 | 0.1 | 0.0 | 0.1 |
| - contractual work | 0.1 | 0.2 | 0.6 | 1.2 | 0.2 | 0.1 | 0.1 | 0.7 | 0.6 |
| - other gainful activities n.a.e. | 0.2 | 0.6 | 1.2 | 1.5 | 0.4 | 0.2 | 0.4 | 1.4 | 1.7 |

Symbols : not available 0 less than half of the unit or nil

| Size of the farm (1000 ha) | Agricultural area (ha) | | | | All farms | Livestock (LU) | | | |
|--|------------------------|---------------|---------------|---------------|----------------|----------------|---------------|---------------|---------------|
| | < 5 | 5 - < 20 | 20 -< 50 | 50 =< | | 0 | 0 <- < 5 | 5 -< 50 | 50 =< |
| Area | | | | | | | | | |
| Total area of agricultural holdings | 2459.7 | 4018.0 | 3069.0 | 7684.2 | 17230.9 | 11042.0 | 1071.3 | 2767.3 | 2350.2 |
| Other area | 640.1 | 833.7 | 599.4 | 2751.8 | 4825.0 | 3414.7 | 293.5 | 675.4 | 441.3 |
| Wooded area | 403.5 | 584.2 | 424.5 | 2164.8 | 3577.1 | 2586.2 | 208.1 | 497.8 | 285.0 |
| Agricultural area | 1819.6 | 3184.3 | 2469.6 | 4932.4 | 12405.9 | 7627.3 | 777.8 | 2091.9 | 1908.9 |
| Arable land | 755.6 | 1970.2 | 1692.2 | 2473.4 | 6891.3 | 4233.7 | 478.5 | 1019.7 | 1159.5 |
| Cereals | 448.9 | 1173.1 | 922.7 | 1320.8 | 3865.6 | 2670.4 | 277.5 | 458.2 | 459.4 |
| <i>Common wheat and spelt</i> | 70.6 | 170.8 | 127.5 | 155.3 | 524.1 | 370.5 | 45.1 | 53.3 | 55.3 |
| <i>Durum wheat</i> | 180.7 | 493.1 | 387.1 | 479.6 | 1540.5 | 1198.6 | 95.0 | 164.2 | 82.8 |
| <i>Rye</i> | 0.3 | 0.9 | 0.5 | 2.2 | 3.9 | 2.3 | 0.1 | 1.0 | 0.5 |
| <i>Barley</i> | 48.3 | 113.0 | 81.5 | 98.3 | 341.1 | 162.9 | 43.8 | 77.5 | 56.9 |
| <i>Oats</i> | 13.5 | 59.4 | 44.9 | 55.8 | 173.6 | 71.4 | 21.6 | 55.3 | 25.3 |
| <i>Grain maize</i> | 130.9 | 318.9 | 240.1 | 318.4 | 1008.3 | 648.1 | 56.8 | 85.8 | 217.5 |
| Dried pulses | 9.0 | 20.9 | 23.6 | 41.1 | 94.6 | 67.9 | 5.9 | 11.8 | 9.0 |
| Root crops | 21.5 | 63.5 | 58.9 | 87.9 | 231.8 | 184.1 | 16.8 | 12.3 | 18.7 |
| <i>Potatoes</i> | 9.8 | 9.7 | 5.8 | 5.3 | 30.6 | 24.0 | 3.1 | 2.5 | 1.0 |
| <i>Sugar beet</i> | 10.9 | 52.3 | 52.0 | 79.6 | 194.8 | 157.5 | 13.0 | 8.0 | 16.2 |
| <i>Fodder root</i> | 0.8 | 1.5 | 1.2 | 3.0 | 6.4 | 2.6 | 0.6 | 1.7 | 1.5 |
| Industrial crops | 29.8 | 71.0 | 58.0 | 112.9 | 271.6 | 216.3 | 23.5 | 13.3 | 18.5 |
| <i>Tobacco</i> | 6.5 | 9.6 | 4.2 | 12.3 | 32.7 | 23.7 | 5.3 | 2.5 | 1.2 |
| <i>Hops</i> | 0.0 | 0.0 | 0.0 | 0.0 | 0.1 | 0.0 | 0.0 | 0.0 | 0.0 |
| <i>Cotton</i> | 0.0 | 0.0 | 0.0 | 0.0 | 0.0 | 0.0 | 0.0 | 0.0 | 0.0 |
| <i>Rape and turnip</i> | 0.0 | 0.2 | 0.3 | 1.1 | 1.6 | 1.4 | 0.0 | 0.1 | 0.1 |
| <i>Sunflower</i> | 7.4 | 27.1 | 26.6 | 47.2 | 108.3 | 84.0 | 13.3 | 5.4 | 5.6 |
| <i>Soya</i> | 15.1 | 32.3 | 26.2 | 48.6 | 122.3 | 102.6 | 4.0 | 4.7 | 10.9 |
| Fresh vegetables, melons, strawberry | 62.0 | 68.4 | 48.3 | 56.2 | 235.0 | 205.6 | 10.6 | 8.6 | 10.2 |
| <i>outside</i> | 51.3 | 62.0 | 45.5 | 53.7 | 212.5 | 184.6 | 10.0 | 8.2 | 9.7 |
| <i>under glass</i> | 10.7 | 6.4 | 2.9 | 2.5 | 22.5 | 21.0 | 0.6 | 0.5 | 0.4 |
| Flower and ornamental plants | 7.2 | 1.7 | 0.6 | 1.0 | 10.5 | 9.5 | 0.9 | 0.1 | 0.0 |
| <i>outside</i> | 3.4 | 0.9 | 0.5 | 0.8 | 5.6 | 4.8 | 0.8 | 0.1 | 0.0 |
| <i>under glass</i> | 3.7 | 0.8 | 0.2 | 0.2 | 4.9 | 4.8 | 0.1 | 0.0 | 0.0 |
| Forage plants | 133.6 | 466.9 | 488.4 | 670.8 | 1759.6 | 560.0 | 120.0 | 484.9 | 594.7 |
| Fallow land | 42.0 | 101.6 | 89.0 | 174.7 | 407.3 | 308.9 | 22.7 | 28.8 | 47.0 |
| Kitchen garden | 18.0 | 7.4 | 1.4 | 0.5 | 27.2 | 17.6 | 6.6 | 2.5 | 0.5 |
| Permanent pasture and meadows | 150.5 | 412.0 | 515.7 | 2176.1 | 3254.2 | 1429.3 | 153.7 | 973.4 | 697.9 |
| Permanent crops | 895.5 | 794.8 | 260.4 | 282.4 | 2233.1 | 1946.8 | 139.0 | 96.2 | 51.0 |
| Fruit and berry plantation | 134.0 | 170.1 | 55.9 | 44.3 | 404.3 | 341.4 | 30.9 | 19.1 | 13.0 |
| Citrus plantation | 58.6 | 36.8 | 13.2 | 12.4 | 121.0 | 115.3 | 1.7 | 2.9 | 1.2 |
| Olive trees | 464.1 | 283.6 | 93.1 | 118.5 | 959.3 | 828.0 | 65.8 | 48.7 | 16.9 |
| Vineyard | 230.7 | 294.2 | 93.5 | 100.7 | 719.0 | 636.3 | 39.4 | 25.0 | 18.2 |
| Ratios | | | | | | | | | |
| Agricultural area per holding (ha) | 2.0 | 9.6 | 30.5 | 127.9 | 9.0 | 6.9 | 5.7 | 20.9 | 55.1 |
| Agricultural area... (%) | | | | | | | | | |
| ... own farmed | 92.2 | 80.7 | 67.0 | 65.8 | 73.7 | 82.2 | 75.6 | 60.2 | 54.1 |
| ... in less favoured or mountain area | 44.3 | 42.8 | 45.7 | 58.3 | 49.7 | 43.1 | 62.5 | 69.0 | 49.9 |
| ... organic farmed | 1.6 | 3.3 | 4.9 | 7.1 | 4.9 | 3.6 | 2.7 | 6.5 | 9.2 |
| ... irrigated | 19.9 | 22.9 | 22.1 | 18.6 | 20.6 | 21.9 | 13.0 | 10.2 | 30.0 |

Symbols : not available 0 less than half of the unit or nil

| Size of the farm | Agricultural area (ha) | | | | All farms | Livestock (LU) | | |
|---|------------------------|---------------|---------------|---------------|---------------|----------------|---------------|---------------|
| | < 5 | 5 - < 20 | 20 - < 50 | 50 = < | | 0 < - < 5 | 5 - < 50 | 50 = < |
| Total livestock (1000 LU) | 1408.8 | 2509.5 | 2477.5 | 3141.5 | 9537.3 | 199.5 | 1872.2 | 7465.5 |
| of which grazing (%) | 29.3 | 58.3 | 65.8 | 60.9 | 56.8 | 72.0 | 93.3 | 47.3 |
| Grazing livestock (1000 heads) | | | | | | | | |
| Equidae | 26.4 | 40.4 | 36.9 | 24.4 | 128.1 | 20.7 | 73.7 | 33.7 |
| Bovine animals | 460.2 | 1725.7 | 1835.7 | 2147.8 | 6169.4 | 122.9 | 1683.4 | 4363.1 |
| Under 1 year | 162.3 | 478.8 | 431.7 | 545.1 | 1617.9 | 45.6 | 419.0 | 1153.3 |
| From 1 to less than 2 years | 129.3 | 431.1 | 445.3 | 521.3 | 1527.1 | 31.8 | 391.5 | 1103.7 |
| Dairy cows | 100.8 | 536.2 | 594.8 | 627.6 | 1859.4 | 17.2 | 423.9 | 1418.3 |
| Other cows | 39.6 | 139.6 | 195.0 | 233.6 | 607.8 | 19.1 | 296.7 | 291.9 |
| Other bovine animals 2 years and older | 28.2 | 139.9 | 168.8 | 220.3 | 557.2 | 9.1 | 152.3 | 395.8 |
| Sheep | 596.2 | 1472.2 | 2041.8 | 2860.7 | 6970.9 | 358.1 | 4018.8 | 2594.0 |
| Goats | 192.7 | 232.0 | 207.5 | 279.6 | 911.8 | 105.4 | 532.4 | 273.9 |
| Granivores | | | | | | | | |
| Pigs (1000 heads) | 1161.1 | 1632.9 | 2147.4 | 3807.9 | 8749.3 | 135.3 | 338.6 | 8275.4 |
| Piglets < 20 kg | 213.5 | 331.7 | 425.7 | 788.5 | 1759.4 | 9.0 | 62.4 | 1688.1 |
| Breeding sows | 92.5 | 116.6 | 148.1 | 346.0 | 703.2 | 3.6 | 41.7 | 657.8 |
| Other pigs | 855.1 | 1184.6 | 1573.6 | 2673.4 | 6286.7 | 122.7 | 234.5 | 5929.5 |
| Poultry (million heads) | 56.1 | 53.7 | 21.5 | 17.6 | 148.9 | 1.2 | 1.8 | 145.8 |
| Broilers | 34.8 | 33.7 | 12.9 | 8.9 | 90.3 | 0.6 | 0.8 | 88.9 |
| Laying hens | 12.6 | 13.6 | 4.0 | 5.8 | 36.0 | 0.5 | 0.8 | 34.7 |
| Other poultry | 8.7 | 6.4 | 4.6 | 2.9 | 22.6 | 0.1 | 0.2 | 22.3 |
| Rabbits, breeding females (1000 heads) | 270.9 | 314.9 | 242.2 | 27.8 | 855.8 | 107.9 | 513.2 | 234.8 |
| Beehives* (1000) | 624.2 | 63.1 | 7.7 | 2.9 | 698.0 | 15.4 | 30.6 | 4.5 |
| Average size of herds** | | | | | | | | |
| Equidae (head/holding) | 3.0 | 4.4 | 7.1 | 7.6 | 4.8 | 2.1 | 5.5 | 10.7 |
| Cattle (head/holding) | 12.0 | 29.3 | 65.4 | 146.8 | 44.0 | 3.2 | 22.4 | 164.3 |
| Dairy cows (head/holding) | 7.8 | 20.0 | 42.2 | 96.0 | 30.8 | 2.0 | 12.4 | 80.3 |
| Other cows (head/holding) | 4.9 | 7.5 | 18.8 | 39.1 | 14.1 | 2.2 | 10.5 | 47.0 |
| Sheep (head/holding) | 25.5 | 59.1 | 152.3 | 338.3 | 99.4 | 12.2 | 116.8 | 405.6 |
| Goats (head/holding) | 15.4 | 22.6 | 48.9 | 110.6 | 30.8 | 7.9 | 37.8 | 132.5 |
| Pigs (head/holding) | 25.4 | 46.8 | 198.9 | 733.8 | 90.5 | 2.3 | 11.5 | 986.7 |
| Breeding sows (head/holding) | 37.0 | 24.1 | 39.9 | 139.0 | 51.9 | 2.0 | 5.3 | 174.1 |
| Other pigs > 20 kg (head/holding) | 19.0 | 34.4 | 151.2 | 535.1 | 66.3 | 2.1 | 8.2 | 724.3 |
| Rabbits, breeding females (head/holding) | 18.2 | 49.5 | 135.0 | 67.7 | 36.5 | 5.6 | 141.6 | 439.6 |
| Laying hens (1000/holding) | 0.4 | 0.8 | 1.0 | 4.0 | 0.6 | 0.0 | 0.1 | 12.9 |
| Broilers (1000/holding) | 1.5 | 3.1 | 5.3 | 11.0 | 2.4 | 0.0 | 0.1 | 38.6 |
| Beehives (hive/holding) | 123.9 | 45.2 | 14.2 | 26.8 | 98.5 | 12.2 | 30.4 | 27.6 |

Symbols : not available 0 less than half of the unit or nil

* Bees are not taken into account when calculating Livestock Unit, there are 139.2 thousand hives on holdings with 0 LU.

** Number of animals of a given livestock category per holding with this kind of animal.

| | | Absolute figures | | | % of total | |
|--|------------------|------------------|---------|----------|------------|----------|
| | | Total | < 1 ESU | >= 1 ESU | < 1 ESU | >= 1 ESU |
| Regular labour force | (1000 persons) | 3279.4 | 534.7 | 2744.7 | 16.3 | 83.7 |
| Regular labour force | (1000 AWU) | 1231.9 | 101.6 | 1130.3 | 8.2 | 91.8 |
| Holders | (1000 persons) | 1699.5 | 347.1 | 1352.4 | 20.4 | 79.6 |
| ... at least 65 years old | | 734.9 | 170.5 | 564.4 | 23.2 | 76.8 |
| ... having another gainful activity | | 466.6 | 105.8 | 360.8 | 22.7 | 77.3 |
| Number of holdings | (1000) | 1728.5 | 348.2 | 1380.3 | 20.1 | 79.9 |
| ... producing mainly for own consumption | | 535.9 | 184.0 | 351.9 | 34.3 | 65.7 |
| ... producing mainly for direct sales | | 367.3 | 42.2 | 325.1 | 11.5 | 88.5 |
| ... using a tractor | | 968.6 | 102.7 | 865.9 | 10.6 | 89.4 |
| Standard Gross Margin (SGM) | (1000 ESU) | 22066.8 | 184.2 | 21882.5 | 0.8 | 99.2 |
| Agricultural area | (1000 ha) | 12707.8 | 301.9 | 12405.9 | 2.4 | 97.6 |
| ... owned farmed | | 9430.2 | 283.4 | 9146.9 | 3.0 | 97.0 |
| Livestock | (1000 LU) | 9563.7 | 26.5 | 9537.3 | 0.3 | 99.7 |

Symbols : not available 0 less than half of the unit or nil

➤ ESSENTIAL INFORMATION – METHODOLOGICAL NOTES

The survey on the structure of agricultural holdings in Italy was carried out from October 2005 until January 2006 on a sample basis. The full-scale census was last conducted in 2000. The reference period of the FSS 2005 was from 1st November 2004 until 31st October 2005 (1st December 2005 for livestock).

The target population was all the holdings exceeding the determined threshold in 2005 [at least 1 hectare of utilised agricultural area or production of a certain proportion either for sale (at least 2066 euro) or exceeding certain physical thresholds]. The largest holdings above the optimal threshold (at least 273 ha UAA, 446 LSU or separately established economic size for certain types of farming determined by the Hidioglou-method) were included exhaustively. Remaining units were observed by a random sample. Stratification was done by province or region, by dimension (UAA, LSU, ESU) and by type of farming determined by a 'stepwise' statistical procedure) to improve the statistical efficiency of the strata. Sample size and allocation were done using multivariate analysis and the Neyman method, with upper limits for the expected coefficients of variation for main variables at national and regional levels. The total number of observed units was about 56 500.

For each activity ('enterprise') on a farm (for instance wheat, dairy cow or vineyard), a standard gross margin (SGM) is estimated, based on the area (or the number of heads) and a regional coefficient. The sum of such margins in a farm is its economic size, expressed in European Size Units (ESU). 1 ESU is equal to 1200 euros.

Each farm is classified in the community typology by its economic size and its type of farming, depending on the share of each enterprise in its economic size. For instance, a farm where breeding sows account for more than 2/3 of the economic size, is classified as *specialist pig rearing* (type 5011). Depending on the level of aggregation, farms are grouped into 8 to 70 types.

Annual work unit (AWU) is equivalent to a worker employed on a full time basis for one year. In Italy it is 1800 hours (225 working days of 8 working hours per day).

Livestock Unit (LU) is equivalent to a dairy cow. The number of animals (number of heads) is converted into LU using a set of coefficients reflecting the feed requirements of the different animal categories.

Subsistence farming refers here to all farms below 1 ESU economic size. Note that the number of farms cannot be compared between countries due to the differences in coverage of FSS.

➤ REFERENCE PUBLICATIONS

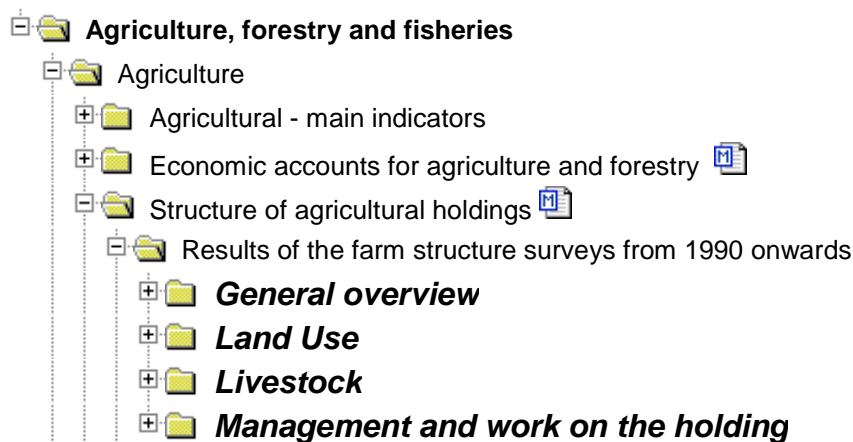
Struttura e produzioni delle aziende agricole, Istituto Nazionale di Statistica, December 2006.

Website of Istituto Nazionale di Statistica: www.istat.it

National Methodological Report – FSS 2005 (available on request)

Further information:

Data: [EUROSTAT Website/Theme: Agriculture and Fisheries/Data](#)



Journalists can contact the media support service:

Bech Building Office A4/125
L - 2920 Luxembourg

Tel. (352) 4301 33408
Fax (352) 4301 35349

E-mail: eurostat-mediasupport@ec.europa.eu

European Statistical Data Support:

Eurostat set up with the members of the 'European statistical system' a network of support centres, which will exist in nearly all Member States as well as in some EFTA countries.

Their mission is to provide help and guidance to Internet users of European statistical data.

Contact details for this support network can be found on our Internet site: <http://ec.europa.eu/eurostat/>

A list of worldwide sales outlets is available at the:
Office for Official Publications of the European Communities.

2, rue Mercier
L - 2985 Luxembourg

URL: <http://publications.europa.eu>

E-mail: info-info-opoce@ec.europa.eu
