

COMMISSION OF THE EUROPEAN COMMUNITIES

COM(77) 235 final

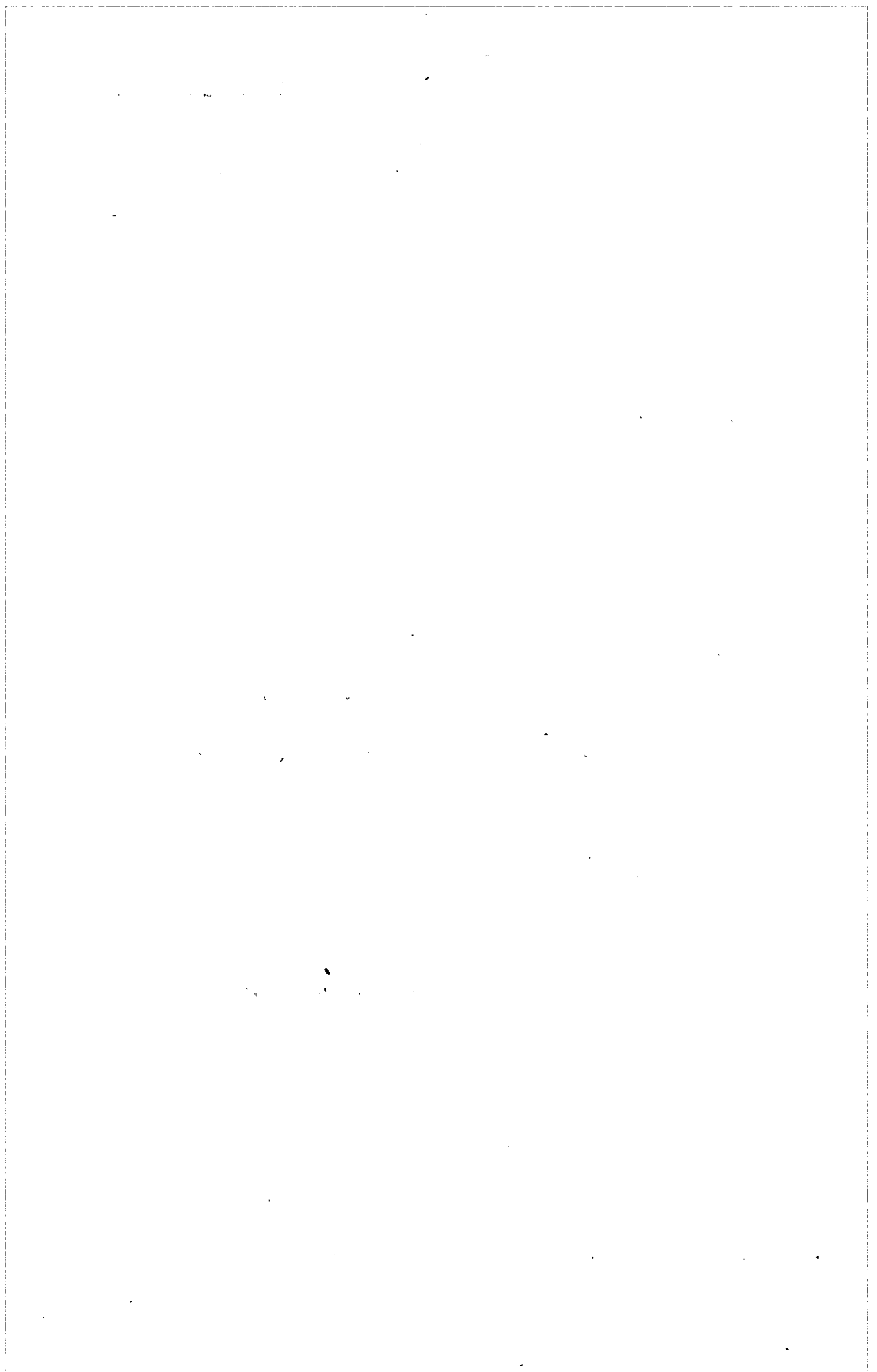
Brussels, 31 May 1977

Proposal for a
COUNCIL REGULATION (EEC)

fixing, for the 1977/1978 marketing year, the
production aid for tinned pineapple and the
minimum price to be paid to pineapple producers

(submitted to the Council by the Commission)

COM(77) 235 final



EXPLANATORY MEMORANDUM

Pursuant to Articles 1 and 3 of Regulation (EEC) No 525/77⁽¹⁾ a system of production aid for tinned pineapple has been established. The aid is paid to processors who undertake to pay pineapple producers at least the minimum price.

Under Article 4 of the said Regulation the aid is fixed in such a manner as to offset the difference between the Community offer price for tinned pineapple and the prices charged by non-member supplier countries. The minimum price to pineapple producers is fixed at the same time.

In the attached proposal, the aid and minimum price for the 1977/78 marketing year have been calculated in the light of the above mentioned basic Regulation, and in particular the prices charged by non-member supplier countries and the Community offer price.

Since imports into France have only recently been liberalized, import prices have not yet stabilized at the foreseeable level.

As far as the import price level is concerned, prices on the market in Germany, which is by far the major importer, are representative. The average price in December 1976 and January 1977, CCT included, converted into weight including immediate packing, was 417 u.a./tonne.

As regards the Community price, the raw material has increased by the same percentage (3.9 %) that the Council found necessary for fruit and vegetables as a whole. Processing costs, however, have risen less (3 %). The Community price is therefore 728.9 u.a./tonne.

Comparing this Community prices with import prices results in aid of 312 u.a./tonne, an increase of approximately 4 %.

(1) OJ No L 73, 21.3.1977, p. 46



COUNCIL REGULATION (EEC) _____

fixing, for the 1977/1978 marketing year, the production aid for tinned pineapple and the minimum price to be paid to pineapple producers

THE COUNCIL OF THE EUROPEAN COMMUNITIES,

Having regard to the Treaty establishing the European Economic Community,

Having regard to Council Regulation (EEC) No 525/77 of 14 March 1977 establishing a system of production aid for tinned pineapple⁽¹⁾, and in particular Article 4(2) thereof,

Having regard to the proposal from the Commission,

Whereas Article 1 of Regulation (EEC) No 525/77 establishes a system of production aid for tinned pineapple processed from pineapples harvested in the Community; whereas the object of such aid is to offset the difference between the Community offer price and the prices charged by third countries for tinned pineapple;

Whereas, under Article 3 of the said Regulation, the granting of such aid is subject to the payment to producers of fresh pineapples of at least a minimum price; whereas that price must be fixed so as to ensure a fair remuneration to the producers concerned,

HAS ADOPTED THIS REGULATION :

⁽¹⁾ OJ No L 73, 21.3.1977, p. 46

./.

2

Article 1

For the 1977/78 marketing year, the production aid for tinned pineapple referred to in Article 1 of Regulation (EEC) No 525/77 shall be 31.2 units of account per 100 kilograms, including immediate packaging.

Article 2

For the 1977/78 marketing year, the minimum price referred to in Article 3 of Regulation (EEC) No 525/77 shall be 15.85 units of account per 100 kilograms.

Article 3

This Regulation shall enter into force on the day following its publication in the Official Journal of the European Communities. It shall apply from 1 June 1977.

This Regulation shall be binding in its entirety and directly applicable in all Member States.

Done at Brussels
For the Council
The President

FINANCIAL STATEMENT

DATE : 16 May 1977

1. BUDGET LINE CONCERNED : Article 682 (intervention for transformed products of fruits and vegetables)
2. ACTION : Proposal for a Regulation of the Council fixing, for the 1977/1978 marketing year, the amount of production aid for tinned pineapple and the minimum price to be paid to pineapple producers
3. LEGAL BASIS : Art. 4(2) of Reg. 5125/77 of the Council
4. OBJECTIVES : Fixing of the amount of production aid for tinned pineapples

5. FINANCIAL CONSEQUENCE	FOR THE MARKETING YEAR	CURRENT FINANCIAL YEAR (77)	FOLLOWING FINANCIAL YEAR (78)
5.0 EXPENDITURE			
-CHARGED TO THE EC BUDGET (REVENUES/INTERVENTIONS)	4,3 mio u.a.	3,9 mio u.a.	0,4 mio u.a.
-CHARGED TO NATIONAL ADMINISTR.			
-CHARGED TO OTHER NATIONAL GROUPS			
5.1 RECEIPTS			
-OWN RESOURCES OF THE EC (LEVIES/CUSTOMS DUTIES)			
-NATIONAL			

YEAR YEAR YEAR

- 1.0.1 PLURIANNUAL PATTERN OF EXPENDITURE The measure concerns only the marketing year 1977/78
- 1.1.1 PLURIANNUAL PATTERN OF RECEIPTS

1.2 METHOD OF CALCULATION

13.800 t tinned pineapples x 312 u.a./tonne, of which 10 % is paid in 1978.

- | | |
|---|--------|
| 0 FINANCING POSSIBLE WITH CREDITS INSCRIBED IN RELEVANT CHAPTER OF CURRENT BUDGET ? | YES/NO |
| 1 FINANCING POSSIBLE BY TRANSFER BETWEEN CHAPTERS OF CURRENT BUDGET ? | YES/NO |
| 2 NECESSITY FOR A SUPPLEMENTARY BUDGET ? | YES/NO |
| 3 CREDITS TO BE WRITTEN INTO FUTURE BUDGETS ? | YES/NO |

COMMENTS :

