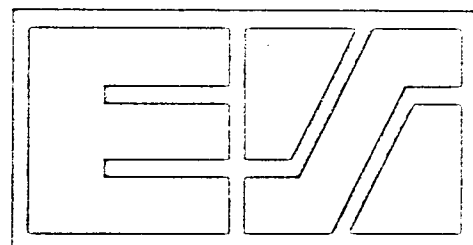


CONSUMER PRICE INDEX



eurostat

RAPID INFORMATION

THE CONSUMER PRICE INDEX IN OCTOBER 1984

The consumer price index for the EC as a whole rose by 0.8 % between September and October 1984, the highest rise for six months.

The biggest increase was again recorded in Greece, where the index went up by 2.5 %, mainly due to sharp increases for certain articles (clothing 11.3 %, footwear 11.5 %, poultry 11.2 %, vegetables 16.5).

Another significant increase was reported from Italy (1.0 %), whereas the rates of increase for the other member states were below the Community average: Netherlands 0.7 %, Germany, France, Luxemburg and the United Kingdom 0.6 %, Belgium 0.5 % and Denmark 0.4 %. The inflation rate over the year (October 1984 compared with October 1983) amounted to 6.7 % for the EC as a whole.

The rates for the individual countries were as follows:

Germany	2.1 %	Denmark	6.0 %
Netherlands	2.8 %	France	6.9 %
Luxemburg	3.6 %	Ireland	7.9 % *
United Kingdom	5.0 %	Italy	9.6 %
Belgium	5.8 %	Greece	18.4 %

* The figure for Ireland relates to the period August 1983 to August 1984.

Attention: See also the graphs on pages 3 and 4 which show the situation of each country compared with EUR-10.

Latest data 19.11.1984.

Also available in FR.

10 □ 1984

A

CONSUMER PRICES

GENERAL INDEX

PRIX A LA CONSOMMATION

INDICE GENERAL

	EUR10	BR DEUTSCH LAND	FRANCE	ITALIA	NEDER- LAND	BELGIQUE BELGIE	LUXEM- BOURG	UNITED KINGDOM	IRELAND	DANMARK	ELLAS	ESPAÑA	PORTU- GAL	USA	CANADA	JAPAN
	PRICE INDICES								INDICES DE PRIX							
	1975 = 100															
1979 Ø	146.4	115.6	144.8	177.9	126.1	127.6	126.3	165.8	163.4	146.1	170.3	202.9	231.8	134.9	138.1	127.0
1980 Ø	167.4	122.0	164.5	215.7	134.9	136.1	134.2	195.6	193.2	164.0	212.6	234.5	270.2	153.1	152.1	137.2
1981 Ø	188.9	129.2	186.5	257.8	144.1	146.5	145.1	218.9	232.6	183.3	264.7	268.6	324.2	168.9	171.0	144.0
1982 Ø	209.7	136.1	208.9	300.2	152.7	159.2	158.6	237.7	272.5	201.9	320.1	310.0	396.7	179.3	189.5	147.8
1983 Ø	227.5	140.0	228.5	344.3	157.0	171.4	172.4	248.6	300.2	215.8	385.8	344.7	497.9	185.1	200.5	150.3
1983 A	229.3	141.6	230.6	346.6	157.5	173.7	173.9	250.7	305.9	216.3	382.7	347.7	508.5	186.3	202.7	149.3
1983 S	231.3	141.9	232.3	351.2	158.1	174.9	175.6	251.9		218.6	397.1	350.5	526.1	187.2	202.7	151.2
1983 O	233.1	141.9	234.2	356.5	159.0	174.9	177.2	252.7		219.8	404.9	355.2	536.1	187.7	203.9	152.6
1983 N	234.4	142.2	235.2	360.4	159.2	175.8	178.1	253.6	311.5	221.8	410.0	358.9	548.7	188.0	203.9	151.7
1983 D	235.2	142.5	235.9	361.9	159.2	176.1	178.9	254.3		221.8	416.6	364.4	570.8	188.2	204.5	151.2
1984 J	236.8	143.2	237.6	366.3	159.5	177.8	179.9	254.2		222.5	421.7	369.5	579.4	189.3	205.6	151.7
1984 F	238.4	143.6	239.2	370.7	160.2	179.1	181.1	255.2	318.9	224.9	423.5	371.0	588.9	190.2	206.8	152.6
1984 M	239.7	143.7	240.7	373.3	161.0	179.9	180.8	256.0		225.8	436.9	374.2	611.3	190.6	207.3	153.0
1984 A	241.7	143.9	242.2	376.2	161.7	181.1	181.9	259.4		226.5	445.1	376.3	623.7	191.5	207.8	153.4
1984 M	242.8	144.0	243.6	378.6	161.7	181.5	182.8	260.4	326.2	228.8	451.8	378.3	617.4	192.1	208.2	154.5
1984 J	243.9	144.4	244.8	380.8	161.7	182.0	181.6	261.0		230.0	461.3	381.0	637.0	192.7	209.0	153.3
1984 J	244.3	144.3	246.4	381.6	161.5	183.0	182.0	260.8		229.5	457.1	386.9	654.4	193.3	210.3	153.6
1984 A	245.3	144.0	247.7	383.6	161.7	183.7	182.5	263.1	330.1	230.4	454.8	389.5	666.6	194.1	210.3	152.2
1984 S	246.7	144.1	248.9	386.7	162.3	184.2	182.4	263.7		232.0	468.0	390.3	668.6	195.1	210.4	154.6
1984 O	248.6	144.9	250.4 P	390.6 P	163.4 P	185.1	183.6	265.3		233.0 P	479.5	:	674.5	:	:	155.8
	RATE OF INCREASE OVER ONE MONTH (IRELAND 3 MONTHS) (T/T-1)								TAUX DE CROISSANCE SUR UN MOIS (IRLANDE 3 MOIS)							
83A/83J	0.5	0.4	0.6	0.5	0.3	1.0	0.7	0.4	2.9	0.5	-0.3	1.3	3.2	0.3	0.5	-0.3
83S/83A	0.8	0.2	0.7	1.3	0.4	0.7	1.0	0.5		1.1	3.8	0.8	3.5	0.5	0.0	1.3
83O/83S	0.8	0.0	0.8	1.5	0.6	0.0	0.9	0.3		0.5	2.0	1.3	1.9	0.3	0.6	0.9
83N/83O	0.6	0.2	0.4	1.1	0.1	0.5	0.5	0.4	1.8	0.9	1.3	1.0	2.4	0.2	0.0	-0.6
83D/83N	0.3	0.2	0.3	0.4	0.0	0.2	0.5	0.3		0.0	1.6	1.5	4.0	0.1	0.3	-0.3
84J/83D	0.7	0.4	0.7	1.2	0.2	0.9	0.6	-0.0		0.3	1.2	1.4	1.5	0.6	0.5	0.3
84F/84J	0.7	0.3	0.7	1.2	0.4	0.8	0.6	0.4	2.4	1.1	0.4	0.4	1.6	0.5	0.6	0.6
84M/84F	0.6	0.1	0.6	0.7	0.5	0.4	-0.1	0.3		0.4	3.2	0.9	3.8	0.2	0.2	0.3
84A/84M	0.8	0.1	0.6	0.8	0.4	0.7	0.6	1.3		0.3	1.9	0.6	2.0	0.5	0.2	0.3
84M/84A	0.5	0.1	0.6	0.6	0.0	0.2	0.4	0.4	2.3	1.0	1.5	0.5	-1.0	0.3	0.2	0.7
84J/84M	0.5	0.3	0.5	0.6	0.0	0.3	-0.6	0.2		0.5	2.1	0.7	3.2	0.3	0.4	-0.8
84J/84J	0.2	-0.1	0.7	0.2	-0.1	0.5	0.2	-0.1		-0.2	-0.9	1.5	2.7	0.3	0.6	0.2
84A/84J	0.4	-0.2	0.5	0.5	0.1	0.4	0.2	0.9	1.2	0.4	-0.5	0.7	1.9	0.4	0.0	-0.9
84S/84A	0.5	0.1	0.5	0.8	0.4	0.3	-0.0	0.2		0.7	2.9	0.2	0.3	0.5	0.1	1.6
84O/84S	0.8	0.6	0.6	1.0	0.7	0.5	0.6	0.6		0.4	2.5	:	0.9	:	:	0.8
	RATE OF INCREASE OVER 12 MONTHS (T/T-12)								TAUX DE CROISSANCE SUR 12 MOIS							
83/82A	8.3	3.3	9.8	13.5	2.7	7.9	8.3	4.6	10.0	6.0	20.0	11.0	25.9	2.6	5.5	1.2
83/82S	8.5	3.2	10.0	13.3	2.4	7.3	8.6	5.1		6.0	21.3	11.8	28.5	2.9	4.9	0.7
83/82O	8.4	2.7	10.4	13.1	2.5	6.5	8.4	5.0		5.3	20.8	12.1	30.1	2.9	4.9	1.3
83/82N	8.1	2.6	9.8	12.8	2.7	6.9	7.9	4.8	10.3	5.5	19.9	13.0	32.0	3.2	4.2	1.8
83/82D	8.1	2.6	9.2	12.6	2.9	7.2	8.0	5.3		6.0	20.0	12.2	33.9	3.8	4.5	1.7
84/83J	8.0	2.7	9.0	12.3	3.0	6.9	7.4	5.2		5.5	20.5	11.9	30.6	4.1	5.4	1.8
84/83F	8.0	2.9	8.9	12.1	3.4	7.1	7.8	5.1	10.2	6.4	18.8	11.8	30.0	4.6	5.5	2.8
84/83M	7.9	3.1	8.6	11.9	3.7	7.1	7.5	5.3		7.1	16.9	12.0	31.8	4.7	4.7	2.5
84/83A	7.7	3.0	7.9	11.6	3.7	7.5	7.8	5.2		6.6	17.1	11.2	31.4	4.5	4.9	2.3
84/83M	7.5	2.8	7.8	11.3	3.6	7.2	7.7	5.1	9.7	6.6	16.8	11.3	30.4	4.2	4.8	2.0
84/83J	7.5	2.7	7.7	11.3	3.5	6.8	6.7	5.1		6.8	19.1	11.4	32.1	4.2	4.1	1.9
84/83J	7.0	2.3	7.5	10.6	2.8	6.3	5.4	4.5		6.6	19.2	12.8	32.9	4.1	4.3	2.6
84/83A	7.0	1.7	7.4	10.7	2.7	5.7	4.9	4.9	7.9	6.5	18.9	12.0	31.1	4.2	3.7	1.9
84/83S	6.7	1.5	7.1	10.1	2.7	5.3	3.9	4.7		6.1	17.8	11.3	27.1	4.2	3.8	2.2
84/83O	6.7	2.1	6.9	9.6	2.8	5.8	3.6	5.0		6.0	18.4	:	25.8	:	:	2.1

VERBRAUCHERPREISE
GESAMTINDEX

CONSUMER PRICES
GENERAL INDEX

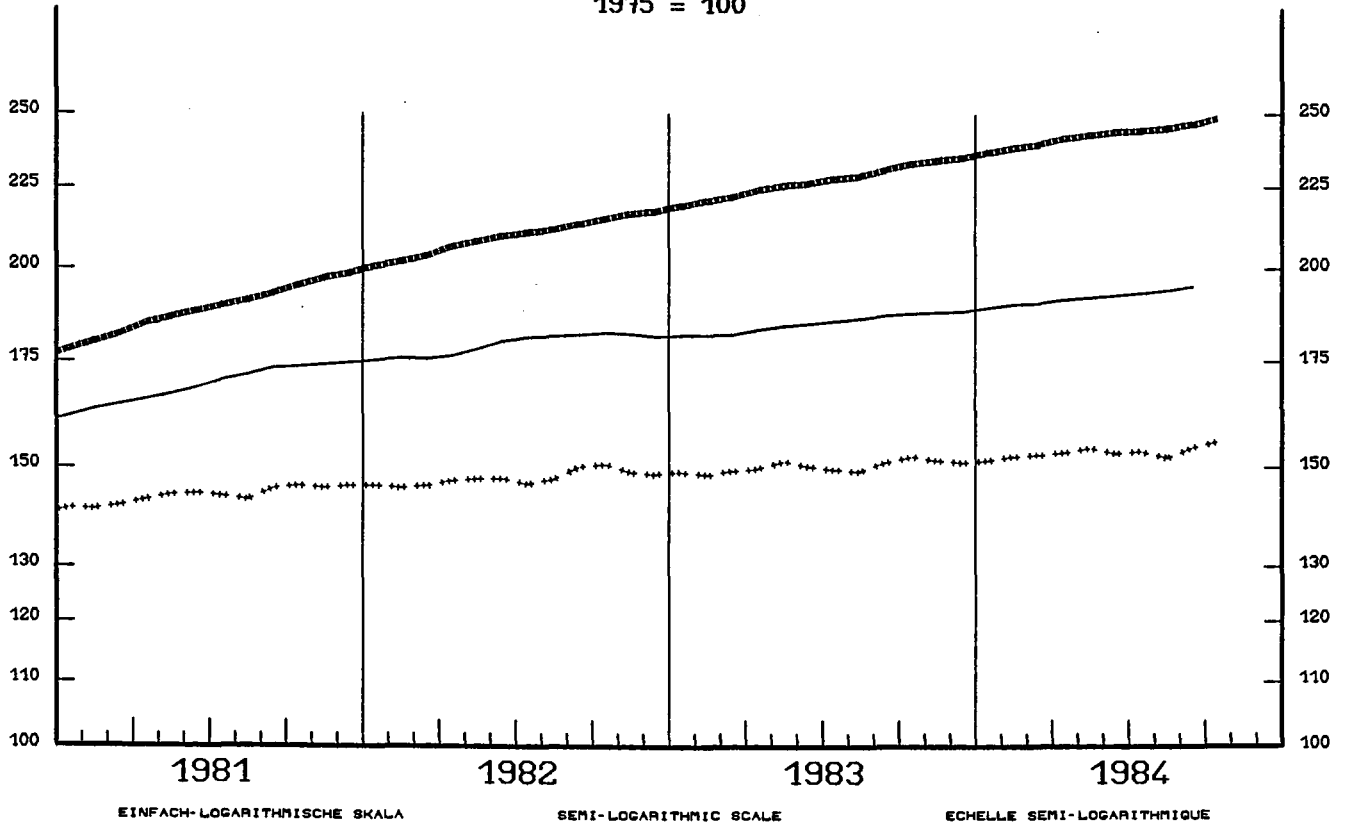
PRIX A LA CONSOMMATION
INDICE GENERAL

— USA

—••••• EUR 10

+ + + + + JAPAN

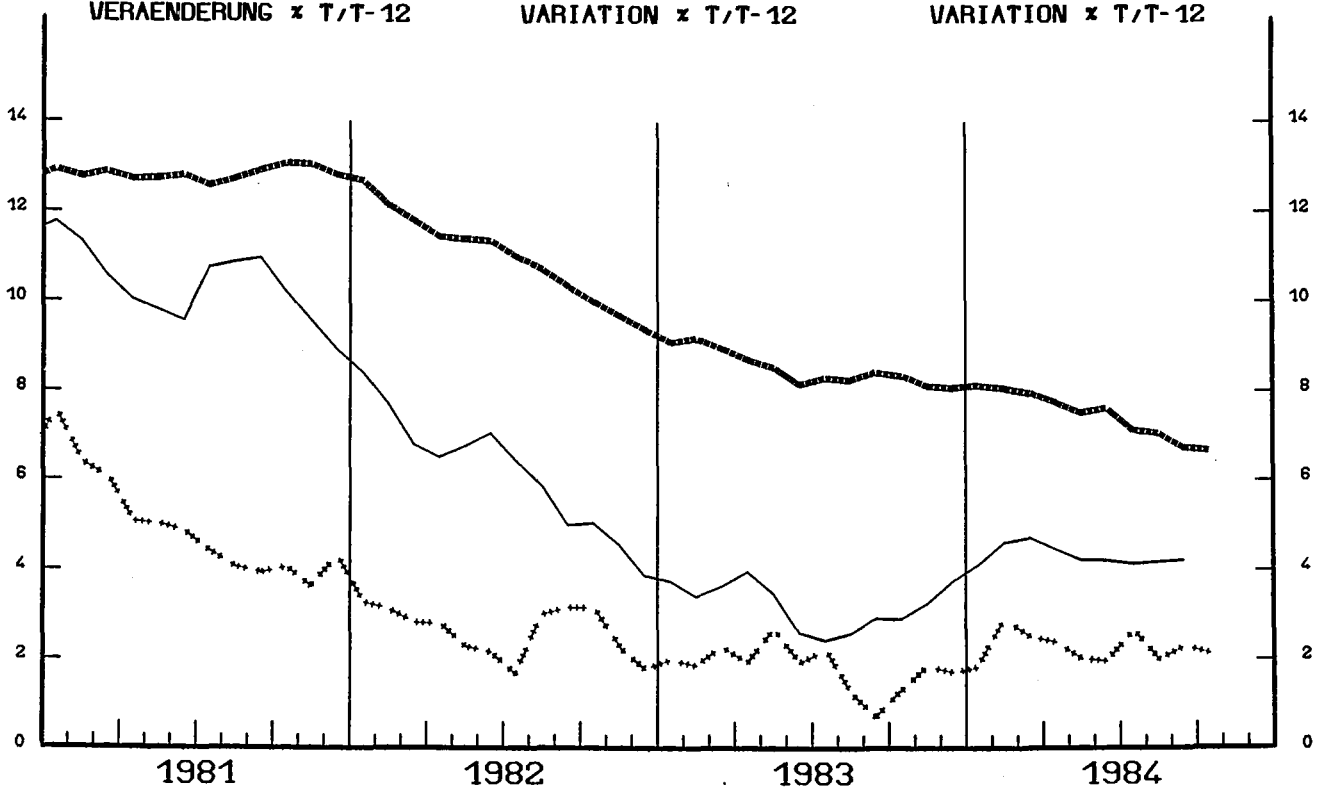
1975 = 100



VERÄNDERUNG x T/T-12

VARIATION x T/T-12

VARIATION x T/T-12

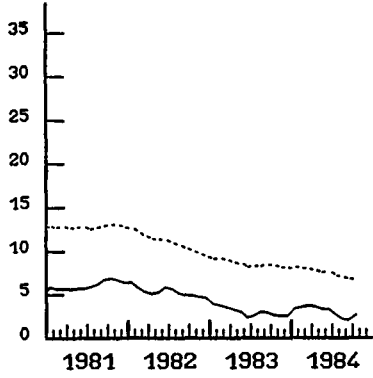


VERBRAUCHERPREISE
GESAMTINDEX
 VEARENDRUNG * T/T-12

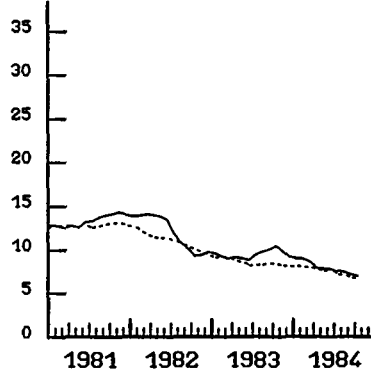
CONSUMER PRICES
GENERAL INDEX
 VARIATION * T/T-12

PRIX A LA CONSOMMATION
INDICE GENERAL
 VARIATION * T/T-12

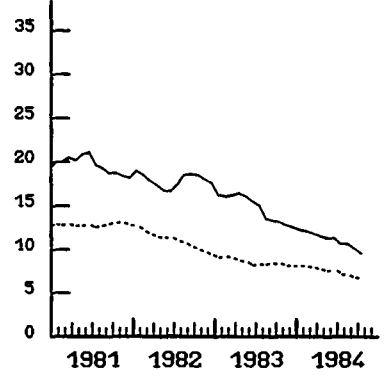
BR DEUTSCHLAND



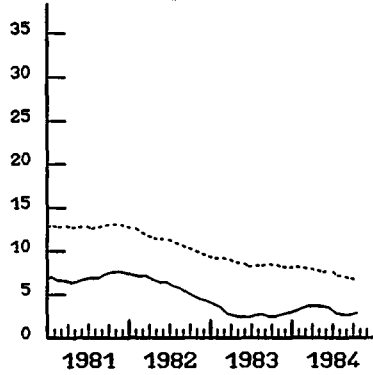
FRANCE



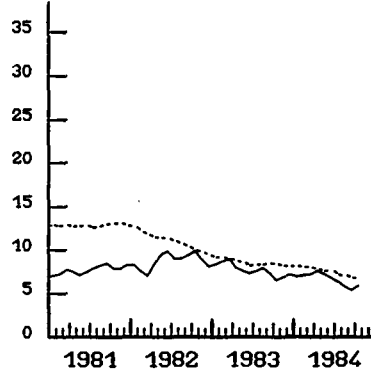
ITALIA



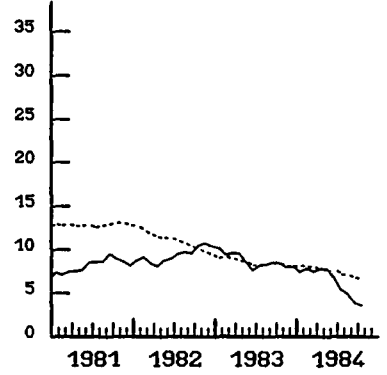
NEDERLAND



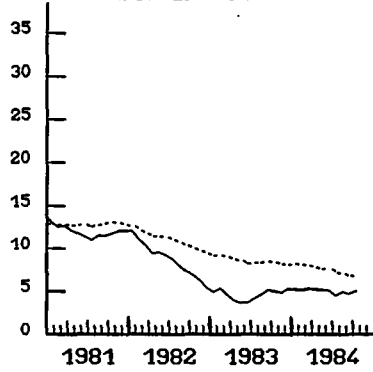
BELGIQUE BELGIE



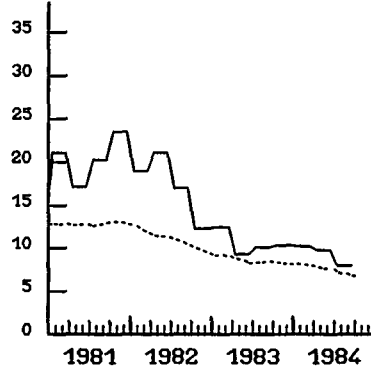
LUXEMBOURG



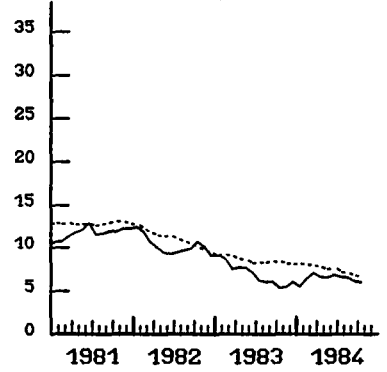
UNITED KINGDOM



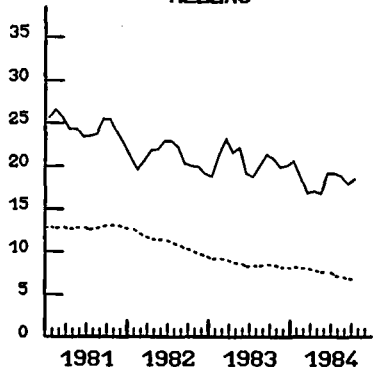
IRELAND



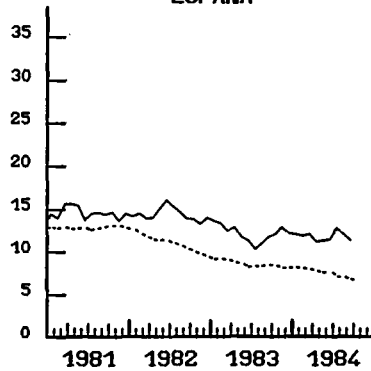
DANMARK



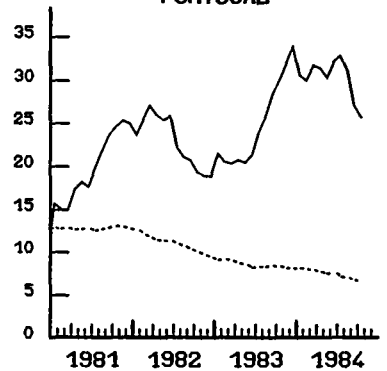
HELLAS



ESPANA



PORTUGAL



CONSUMER PRICES

FOOD(EXCL. DRINKS AND MEALS OUT)

PRIX A LA CONSOMMATION

PRODUITS ALIMENTAIRES(SANS BOISSONS ET REPAS A L'EXTERIEUR)

	EUR10	BR DEUTSCH LAND	FRANCE	ITALIA	NEDER- LAND	BELGIQUE BELGIE	LUXEM- BOURG	UNITED KINGDOM	IRELAND	DANMARK	ELLAS	ESPANA	PORTU- GAL	USA	
	PRICE INDICES								INDICES DE PRIX						
	1975 = 100														
1979	150.9	111.2	147.1	183.3	120.5	120.7	124.4	172.3	170.4	147.8	176.2	191.8	256.5	133.7	
1980	168.2	116.1	161.3	212.7	125.1	125.3	128.8	192.6	186.2	162.6	224.8	209.3	295.2	145.2	
1981	189.9	122.0	183.8	250.7	131.9	132.6	138.0	209.0	212.6	182.3	292.5	237.7	354.9	156.6	
1982	211.9	127.8	207.0	289.0	139.1	145.7	154.1	226.2	238.4	201.2	354.1	273.4	439.1	162.9	
1983	229.0	129.9	226.0	322.8	139.2	157.9	166.5	233.3	255.7	211.8	418.2	302.6	558.0	166.3	
1983 J	228.2	130.7	222.9	323.5	139.0	156.6	165.7	233.3		210.0	402.1	297.6	550.2	166.5	
1983 A	229.2	129.6	225.3	323.5	139.3	158.6	167.0	233.8	264.2	212.0	413.3	306.3	573.8	166.6	
1983 S	232.1	129.6	228.6	327.0	139.5	162.8	169.0	236.6		216.0	429.4	307.2	596.7	166.8	
1983 O	234.2	129.6	231.1	330.6	140.6	163.7	171.6	237.8		218.0	433.5	312.7	606.8	167.0	
1983 N	236.1	130.0	232.7	334.1	141.6	164.2	172.7	238.9	267.0	219.0	441.9	316.5	625.4	166.8	
1983 D	237.9	130.5	234.3	336.5	142.0	165.2	173.6	241.0		220.0	449.6	323.6	665.5	167.6	
1984 J	239.1	131.5	235.8	339.1	142.6	164.9	174.6	242.0		221.0	457.1	330.3	676.6	170.7	
1984 F	241.0	132.7	237.5	342.5	142.9	166.4	175.6	243.2	272.8	224.0	462.1	328.7	680.9	172.2	
1984 M	243.2	133.5	239.2	345.5	144.0	168.7	176.7	245.0		229.0	471.6	330.7	717.5	172.3	
1984 A	245.4	133.8	240.5	348.6	144.4	170.2	177.8	247.7		231.0	482.8	330.3	729.6	172.3	
1984 M	247.2	133.8	241.8	351.2	143.8	170.1	179.2	249.3	286.5	231.0	498.1	331.3	708.8	171.8	
1984 J	248.8	134.5	243.2	353.7	143.6	170.8	179.1	250.2		231.0	508.1	335.3	727.8	172.2	
1984 J	248.1	133.5	245.0	354.2	143.4	171.9	179.8	248.5		231.0	490.4	347.3	756.3	172.9	
1984 A	248.3	131.5	246.5	354.4	143.4	173.3	180.1	247.4	284.8	232.0	497.9	352.2	776.8	173.8	
1984 S	:	129.9	248.0	357.0	143.0	172.0	179.1	:	:	234.0	501.5	348.9	:	173.4	
	RATE OF INCREASE OVER ONE MONTH (IRELAND 3 MONTHS) (T/T-1)								TAUX DE CROISSANCE SUR UN MOIS (IRLANDE 3 MOIS)						
83J/83J	0.5	-0.5	0.9	0.2	0.3	1.0	1.0	0.0		0.5	-3.5	0.0	1.9	0.0	
83A/83J	0.4	-0.8	1.1	0.0	0.2	1.3	0.8	0.2	6.9	1.0	2.8	2.9	4.3	0.1	
83S/83A	1.3	0.0	1.5	1.1	0.1	2.6	1.2	1.2		1.9	3.9	0.3	4.0	0.1	
83O/83S	0.9	0.0	1.1	1.1	0.8	0.6	1.5	0.5		0.9	0.9	1.8	1.7	0.1	
83N/83O	0.8	0.3	0.7	1.1	0.7	0.3	0.6	0.5	1.1	0.5	2.0	1.2	3.1	-0.1	
83D/83N	0.8	0.4	0.7	0.7	0.3	0.6	0.5	0.9		0.5	1.7	2.2	6.4	0.5	
84J/83D	0.5	0.8	0.6	0.8	0.4	-0.2	0.6	0.4		0.5	1.7	2.1	1.7	1.9	
84F/84J	0.8	0.9	0.7	1.0	0.2	0.9	0.6	0.5	2.2	1.4	1.1	-0.5	0.6	0.9	
84M/84F	0.9	0.6	0.7	0.9	0.8	1.4	0.6	0.7		2.2	2.1	0.6	5.4	0.0	
84A/84M	0.9	0.2	0.5	0.9	0.3	0.9	0.6	1.1		0.9	2.4	-0.1	1.7	0.0	
84M/84A	0.7	0.0	0.5	0.7	-0.4	-0.1	0.8	0.6	5.0	0.0	3.2	0.3	-2.9	-0.3	
84J/84M	0.7	0.5	0.6	0.7	-0.1	0.4	-0.1	0.4		0.0	2.0	1.2	2.7	0.2	
84J/84J	-0.3	-0.7	0.7	0.1	-0.1	0.6	0.4	-0.7		0.0	-3.5	3.6	3.9	0.4	
84A/84J	0.1	-1.5	0.6	0.1	0.0	0.8	0.2	-0.4	-0.6	0.4	1.5	1.4	2.7	0.5	
84S/84A	:	-1.2	0.6	0.7	-0.3	-0.8	-0.6	:		0.9	0.7	-0.9	:	-0.2	
	RATE OF INCREASE OVER 12 MONTHS								TAUX DE CROISSANCE SUR 12 MOIS						
83/82J	7.3	0.7	7.9	11.8	-1.3	7.0	6.5	3.0		3.4	12.8	6.4	25.8	1.2	
83/82A	8.0	1.8	8.7	10.3	-0.4	7.6	6.4	4.7	9.6	3.4	18.5	8.1	27.7	1.7	
83/82S	8.5	2.3	9.8	9.5	0.1	8.8	6.6	5.9		4.3	20.4	9.7	30.5	1.7	
83/82O	8.9	2.9	10.4	9.3	1.8	9.6	7.5	5.2		5.3	19.4	10.5	33.4	2.1	
83/82N	8.9	2.7	10.1	9.6	2.5	9.9	7.5	6.0	9.7	5.3	16.7	12.9	36.5	2.1	
83/82D	9.1	2.8	10.1	9.5	3.0	10.1	7.3	6.5		6.3	17.5	12.7	38.9	2.6	
84/83J	8.9	2.7	10.1	9.4	3.0	8.1	8.0	6.2		6.3	19.5	12.7	37.1	3.9	
84/83F	9.0	2.8	10.1	9.6	3.7	8.1	7.9	6.7	11.6	8.2	18.1	13.0	35.7	4.5	
84/83M	9.1	3.2	10.0	9.6	4.3	9.5	8.8	7.4		10.6	15.0	13.1	38.0	4.0	
84/83A	9.1	2.7	9.7	9.6	4.7	10.2	8.9	7.7		11.1	14.6	11.2	36.3	3.6	
84/83M	9.5	2.5	10.1	9.8	4.2	10.3	9.3	8.1	15.9	11.1	16.6	11.7	34.2	3.1	
84/83J	9.6	2.4	10.1	9.6	3.6	10.2	9.1	7.2		10.5	22.0	12.7	34.8	3.4	
84/83J	8.7	2.1	9.9	9.5	3.2	9.8	8.5	6.5		10.0	22.0	16.7	37.5	3.8	
84/83A	8.3	1.5	9.4	9.6	2.9	9.3	7.8	5.8	7.8	9.4	20.5	15.0	35.4	4.3	
84/83S	:	0.2	8.5	9.2	2.5	5.7	6.0	:		8.3	16.8	13.6	:	4.0	

C

CONSUMER PRICES

DRINKS(HOME CONSUMPTION)AND TOBACCO

PRIX A LA CONSOMMATION

BOISSONS(CONSOMMATION A DOMICILE)ET TABAC

	EUR10	BR DEUTSCH LAND	FRANCE	ITALIA	NEDER- LAND	BELGIQUE BELGIE	LUXEM- BOURG	UNITED KINGDOM	IRELAND	DANMARK	ELLAS	ESPAÑA	PORTU- GAL	USA
	PRICE INDICES				1975 = 100				INDICES DE PRIX					
1979 Ø	137.5	113.2	143.5	152.4	116.0	131.7	131.3	159.1	146.3	144.0	136.9	:	294.8	121.8
1980 Ø	152.5	116.1	158.8	175.6	128.8	135.8	133.6	185.9	182.1	155.2	158.4	:	242.7	131.4
1981 Ø	172.4	120.3	181.6	206.3	135.8	147.7	148.5	221.2	237.6	163.7	183.0	:	291.4	141.4
1982 Ø	198.8	134.3	209.1	255.0	144.6	161.8	167.5	248.4	294.2	172.8	225.2	:	355.9	153.1
1983 Ø	217.7	139.3	228.3	295.2	150.3	178.9	182.9	263.5	338.1	197.2	269.1	:	385.3	172.8
1983 J	221.4	138.2	232.8	307.8	150.1	178.2	180.4	265.7		198.0	273.5	:	395.5	174.3
1983 A	222.0	138.2	233.3	308.7	150.8	179.7	187.1	266.4	343.0	199.0	274.0	:	395.8	175.4
1983 S	222.7	138.6	233.9	310.1	151.4	181.9	190.2	266.5		199.0	276.4	:	396.5	175.9
1983 O	223.2	138.7	234.3	311.3	151.9	182.9	190.9	266.3		201.0	277.9	:	401.4	176.4
1983 N	223.7	138.7	234.8	312.4	151.9	183.1	191.1	267.0	344.5	202.0	278.7	:	404.7	176.7
1983 D	223.9	138.8	235.2	313.1	151.8	183.2	191.3	266.1		203.0	280.2	:	410.3	176.5
1984 J	225.8	138.9	238.9	314.1	154.4	185.6	191.3	268.5		207.0	280.8	:	416.7	178.4
1984 F	227.2	138.9	240.7	315.4	160.2	186.5	191.4	270.8	360.4	209.0	277.9	:	420.0	176.3
1984 M	229.1	138.9	241.9	316.8	162.9	187.7	196.7	271.8		209.0	326.0	:	422.6	179.4
1984 A	231.2	139.0	244.0	318.0	163.3	188.5	196.7	280.3		209.0	327.0	:	453.3	179.7
1984 M	232.3	139.1	246.1	318.7	163.3	189.2	196.8	283.3	363.9	209.0	326.8	:	452.0	179.7
1984 J	232.9	139.0	246.7	319.6	163.5	190.0	196.7	283.6		215.0	326.9	:	461.3	180.8
1984 J	231.9	139.0	241.8	320.1	162.9	190.6	196.8	283.6		215.0	327.8	:	464.2	182.7
1984 A	231.8	139.3	239.9	320.6	162.9	191.2	197.0	284.3	366.8	215.0	329.6	:	469.0	183.1
1984 S	:	139.4	240.3	321.3	163.0	192.8	197.0	:		215.0	330.1	:	:	183.2
	RATE OF INCREASE OVER ONE MONTH (IRELAND 3 MONTHS) (T/T-1) TAUX DE CROISSANCE SUR UN MOIS (IRLANDE 3 MOIS) Ø													
83J/83J	3.0	0.1	2.6	8.8	0.2	0.3	0.7	0.0		0.0	0.2	:	1.1	1.9
83A/83J	0.3	0.0	0.2	0.3	0.5	0.8	3.7	0.3	2.7	0.5	0.2	:	0.1	0.6
83S/83A	0.3	0.3	0.3	0.5	0.4	1.2	1.7	0.0		0.0	0.9	:	0.2	0.3
83O/83S	0.2	0.1	0.2	0.4	0.3	0.5	0.4	-0.1		1.0	0.5	:	1.2	0.3
83N/83O	0.2	0.0	0.2	0.4	0.0	0.1	0.1	0.3	0.4	0.5	0.3	:	0.8	0.1
83D/83N	0.1	0.1	0.2	0.2	-0.1	0.1	0.1	-0.3		0.5	0.6	:	1.4	-0.1
84J/83D	0.9	0.1	1.6	0.3	1.7	1.3	0.0	0.9		2.0	0.2	:	1.6	1.1
84F/84J	0.6	0.0	0.8	0.4	3.8	0.5	0.1	0.9	4.6	1.0	-1.1	:	0.8	-1.2
84M/84F	0.8	0.0	0.5	0.4	1.7	0.6	2.8	0.4		0.0	17.3	:	0.6	1.8
84A/84M	0.9	0.1	0.9	0.4	0.2	0.4	0.0	3.1		0.0	0.3	:	7.3	0.2
84M/84A	0.5	0.1	0.9	0.2	0.0	0.4	0.1	1.1	1.0	0.0	-0.1	:	-0.3	0.0
84J/84M	0.2	-0.1	0.2	0.3	0.1	0.4	-0.1	0.1		2.9	0.0	:	2.1	0.6
84J/84J	-0.4	0.0	-2.0	0.2	-0.4	0.3	0.1	0.0		0.0	0.3	:	0.6	1.0
84A/84J	-0.0	0.2	-0.8	0.2	0.0	0.3	0.1	0.2	0.8	0.0	0.6	:	1.0	0.2
84S/84A	:	0.1	0.2	0.2	0.1	0.8	0.0	:		0.0	0.1	:	:	0.1
	RATE OF INCREASE OVER 12 MONTHS (T/T-12) TAUX DE CROISSANCE SUR 12 MOIS													
83/82J	8.5	-1.4	10.1	15.4	4.5	9.3	7.7	5.2		15.1	16.0	:	9.3	14.8
83/82A	8.5	-1.5	10.2	15.3	4.3	9.6	11.5	5.5	12.2	15.0	16.2	:	9.1	15.1
83/82S	8.5	-1.3	10.3	14.7	3.7	10.4	13.0	5.7		13.7	17.0	:	9.2	13.6
83/82O	8.1	-1.4	10.3	14.4	3.3	10.8	9.3	4.2		12.9	17.3	:	10.3	11.1
83/82N	8.2	-1.5	10.4	14.2	3.3	10.5	9.3	5.2	11.6	12.8	17.6	:	11.5	9.5
83/82D	8.0	-1.4	10.3	13.9	1.7	7.4	9.2	5.2		12.8	17.7	:	12.6	7.4
84/83J	8.0	-1.5	11.0	13.6	3.3	7.1	9.0	5.4		8.4	17.8	:	15.2	6.6
84/83F	7.8	-1.3	9.6	13.5	7.2	6.6	9.1	5.0	8.9	9.4	14.9	:	15.4	4.5
84/83M	7.9	-0.9	9.1	13.3	6.6	6.6	12.0	5.1		9.4	20.2	:	15.0	5.8
84/83A	8.0	-0.7	8.2	13.2	9.5	6.7	9.8	6.8		6.1	20.4	:	22.8	5.4
84/83M	8.1	-0.7	8.7	13.1	9.5	6.7	9.8	6.9	9.0	6.1	20.2	:	22.7	5.3
84/83J	8.4	0.7	8.7	13.0	9.1	6.9	9.8	6.8		8.6	19.7	:	17.9	5.7
84/83J	4.7	0.6	3.9	4.0	8.5	7.0	9.1	6.7		8.6	19.8	:	17.4	4.8
84/83A	4.4	0.8	2.8	3.9	8.0	6.4	5.3	6.7	6.9	8.0	20.3	:	18.5	4.4
84/83S	:	0.6	2.7	3.6	7.7	6.0	3.6	:		8.0	19.4	:	:	4.1

E

CONSUMER PRICES

RENT, HEATING AND LIGHTING (1)

PRIX A LA CONSOMMATION

LOYERS, CHAUFFAGE ET ECLAIRAGE (1)

	EUR10	BR DEUTSCH LAND	FRANCE	ITALIA	NEDER- LAND	BELGIQUE BELGIE	LUXEM- BOURG	UNITED KINGDOM	IRELAND	DANMARK	ELLAS	ESPANA	PORTU- GAL	USA
	PRICE INDICES				1975 = 100				INDICES DE PRIX					
1979 Ø	150.4	120.2	152.2	175.9	136.5	137.0	129.2	167.8	152.8	155.0	165.0	192.2	:	136.5
1980 Ø	182.4	128.0	183.7	235.4	151.1	152.6	142.0	214.3	206.0	182.3	212.9	233.8	:	157.9
1981 Ø	212.5	137.6	215.5	284.0	170.5	168.4	156.8	255.6	254.4	209.7	270.7	275.9	:	176.0
1982 Ø	239.9	145.8	244.5	338.1	186.9	183.9	173.3	288.9	289.6	233.3	320.5	313.0	:	188.5
1983 Ø	260.8	150.4	270.0	401.6	197.6	199.1	192.8	300.5	308.4	246.6	365.9	343.9	:	193.7
1983 J	261.0	150.3	271.6	395.8	201.4	196.5	194.7	303.0		245.0	368.2	341.7	:	194.5
1983 A	262.2	151.8	271.9	396.5	201.4	198.6	194.7	305.2	313.9	246.0	369.9	345.2	:	194.7
1983 S	263.8	152.4	273.3	402.2	201.2	199.3	196.3	306.0		248.0	370.7	349.5	:	195.7
1983 O	269.7	152.2	277.3	434.8	201.2	198.8	197.2	307.7		248.0	371.2	353.5	:	195.9
1983 N	271.3	153.1	277.9	438.8	201.2	206.0	197.5	308.6	319.7	253.0	371.7	354.7	:	196.0
1983 D	272.0	154.5	278.2	439.5	201.2	206.5	198.3	309.3		254.0	372.2	359.6	:	196.3
1984 J	275.6	154.2	280.8	457.0	204.1	210.1	201.3	309.9		254.0	385.7	363.0	:	197.4
1984 F	277.5	154.7	284.7	460.3	204.1	212.6	203.7	310.8	325.4	254.0	398.9	366.2	:	198.4
1984 M	278.4	154.3	287.5	462.9	204.3	211.0	198.7	310.8		252.0	413.1	369.0	:	198.7
1984 A	281.7	154.8	289.1	469.0	204.4	211.7	199.7	318.3		252.0	415.4	371.3	:	199.8
1984 M	281.4	154.9	289.2	467.8	204.4	212.5	200.2	316.4	327.7	258.0	416.9	375.5	:	200.6
1984 J	281.6	155.4	289.7	467.4	204.4	213.2	195.2	316.4		259.0	418.4	376.7	:	201.6
1984 J	282.9	155.6	292.0	468.8	208.9	212.0	196.5	317.6		258.0	426.8	377.1	:	202.7
1984 A	288.0	156.0	293.2	470.2	208.9	212.7	196.8	335.3	329.8	258.0	432.0	377.6	:	203.5
1984 S	:	157.0	294.0	470.4	208.9	214.8	196.9	:		259.0	436.4	378.2	:	204.7
	RATE OF INCREASE OVER ONE MONTH (IRELAND 3 MONTHS) (T/T-1) TAUX DE CROISSANCE SUR UN MOIS (IRLANDE 3 MOIS)													
83J/83J	1.2	0.5	0.8	1.5	3.8	0.8	3.3	1.7		-0.4	0.2	0.2	:	0.4
83A/83J	0.5	1.0	0.1	0.2	0.0	1.1	0.0	0.7	3.3	0.4	0.5	1.0	:	0.1
83S/83A	0.6	0.4	0.5	1.4	-0.1	0.4	0.8	0.3		0.8	0.2	1.2	:	0.5
83O/83S	2.2	-0.1	1.5	8.1	0.0	-0.3	0.5	0.6		0.0	0.1	1.1	:	0.1
83N/83O	0.6	0.6	0.2	0.9	0.0	3.6	0.2	0.3	1.8	2.0	0.1	0.4	:	0.1
83D/83N	0.3	0.9	0.1	0.2	0.0	0.2	0.4	0.2		0.4	0.1	1.4	:	0.1
84J/83D	1.3	-0.2	0.9	4.0	1.4	1.7	1.5	0.2		0.0	3.6	0.9	:	0.5
84F/84J	0.7	0.3	1.4	0.7	0.0	1.2	1.2	0.3	1.8	0.0	3.4	0.9	:	0.5
84M/84F	0.3	-0.3	1.0	0.6	0.1	-0.8	-2.5	0.0		-0.8	3.5	0.8	:	0.2
84A/84M	1.2	0.3	0.6	1.3	0.0	0.3	0.5	2.4		0.0	0.6	0.6	:	0.5
84M/84A	-0.1	0.1	0.0	-0.3	0.0	0.4	0.3	-0.6	0.7	2.4	0.4	1.1	:	0.4
84J/84M	0.1	0.3	0.2	-0.1	0.0	0.3	-2.5	0.0		0.4	0.3	0.3	:	0.5
84J/84J	0.5	0.1	0.8	0.3	2.2	-0.6	0.7	0.4		-0.4	2.0	0.1	:	0.6
84A/84J	1.8	0.3	0.4	0.3	0.0	0.3	0.2	5.6	0.6	0.0	1.2	0.1	:	0.4
84S/84A	:	0.6	0.3	0.0	0.0	1.0	0.1	:		0.4	1.0	0.2	:	0.6
	RATE OF INCREASE OVER 12 MONTHS (T/T-12) TAUX DE CROISSANCE SUR 12 MOIS													
83/82J	8.0	3.2	10.2	18.1	5.4	7.2	11.0	2.6		4.7	13.8	8.4	:	2.2
83/82A	7.6	3.9	9.7	15.8	5.4	7.8	10.6	2.8	6.6	5.1	14.1	9.2	:	1.5
83/82S	8.2	3.5	9.8	15.7	5.2	6.7	11.0	4.8		5.1	14.1	10.0	:	2.1
83/82O	8.9	2.1	10.7	19.7	5.0	4.6	9.9	4.9		3.3	13.3	10.6	:	1.9
83/82N	8.5	2.4	9.7	18.4	5.1	8.5	8.3	4.4	8.1	2.4	13.0	10.6	:	2.5
83/82D	9.1	3.6	8.5	18.1	5.2	9.8	8.9	6.7		3.7	12.7	9.3	:	3.5
84/83J	9.3	3.6	7.9	19.6	5.2	8.7	5.7	6.8		3.7	10.2	9.4	:	3.6
84/83F	10.0	4.4	9.0	20.2	5.2	10.1	7.6	7.0	9.9	4.1	12.9	9.8	:	3.9
84/83M	10.4	4.6	10.0	21.4	5.4	9.2	4.9	6.8		4.1	13.6	9.3	:	4.0
84/83A	9.8	4.3	7.8	21.5	5.3	10.0	6.0	6.6		4.6	13.6	9.6	:	4.0
84/83M	9.3	4.0	7.5	20.1	5.3	9.9	6.3	6.2	7.8	4.5	13.8	10.4	:	4.0
84/83J	9.3	3.9	7.5	19.9	5.3	9.3	3.6	6.2		5.3	13.9	10.5	:	4.1
84/83J	8.4	3.5	7.5	18.4	3.7	7.9	0.9	4.8		5.3	15.9	10.4	:	4.2
84/83A	9.8	2.8	7.8	18.6	3.7	7.1	1.1	9.9	5.1	4.9	16.8	9.4	:	4.5
84/83S	:	3.0	7.6	17.0	3.8	7.8	0.3	:		4.4	17.7	8.2	:	4.6

G

CONSUMER PRICES

TRANSPORT AND COMMUNICATIONS

PRIX A LA CONSOMMATION

TRANSPORTS ET COMMUNICATIONS

	EUR10	BR DEUTSCH LAND	FRANCE	ITALIA	NEDER- LAND	BELGIQUE BELGIE	LUXEM- BOURG	UNITED KINGDOM	IRELAND	DANMARK	ELLAS	ESPANA	PORTU- GAL	USA
	PRICE INDICES 1975 = 100 INDICES DE PRIX													
1979 Ø	148.5	114.7	151.6	192.3	122.2	129.8	125.9	165.6	171.0	141.0	158.7	204.2	263.3	140.8
1980 Ø	172.3	122.0	174.8	239.3	132.2	143.9	137.7	197.9	209.6	162.3	194.6	253.4	334.3	165.8
1981 Ø	194.4	130.6	198.2	283.0	143.7	156.6	149.9	222.8	260.2	183.0	221.1	295.9	419.6	185.9
1982 Ø	214.5	136.5	222.2	330.2	149.9	173.3	167.2	238.4	313.8	203.1	254.9	333.5	526.1	193.6
1983 Ø	234.5	140.5	241.6	386.6	155.5	189.1	180.8	252.4	356.8	216.0	313.3	380.4	701.1	198.1
1983 J	236.3	141.1	244.7	386.8	158.6	191.4	185.5	254.9		219.0	315.4	382.7	689.8	199.5
1983 A	237.5	142.3	246.6	388.3	159.3	192.9	186.3	255.8	359.6	219.0	315.2	384.6	704.5	200.8
1983 S	240.2	142.9	247.6	401.0	159.0	192.8	188.3	256.5		221.0	315.9	384.7	770.3	201.7
1983 O	240.3	142.5	247.9	402.5	157.0	190.8	189.1	256.5		220.0	319.3	385.9	777.1	202.5
1983 N	240.6	142.1	247.8	403.7	157.8	193.4	186.8	256.7	365.8	222.0	319.9	387.4	777.1	203.4
1983 D	240.7	142.6	247.8	404.4	157.7	192.5	190.8	256.2		219.0	326.1	397.8	777.1	203.4
1984 J	242.9	143.5	250.0	413.8	158.2	189.2	191.9	255.8		221.0	327.8	405.3	782.3	203.2
1984 F	243.9	143.6	251.8	417.4	158.6	190.0	191.8	254.3	378.0	224.0	336.8	410.6	808.5	203.1
1984 M	244.4	143.3	252.6	419.5	158.6	190.4	191.2	254.0		224.0	341.2	411.8	808.5	203.8
1984 A	248.1	143.3	265.3	419.8	159.8	191.8	191.6	256.8		226.0	347.9	413.2	809.7	205.6
1984 M	247.2	143.5	256.1	423.4	160.3	192.5	191.9	258.4	380.1	226.0	348.7	416.9	809.7	207.3
1984 J	248.1	144.1	257.0	425.8	160.6	190.6	192.1	259.6		228.0	348.7	419.0	906.3	207.9
1984 J	249.1	143.7	261.4	426.0	161.0	193.0	192.1	259.1		228.0	348.9	419.2	906.8	207.8
1984 A	251.2	142.9	265.3	434.2	161.4	194.2	192.3	259.6	384.5	228.0	349.4	422.0	906.8	207.8
1984 S	:	143.3	266.3	435.9	161.3	195.3	192.4	:		229.0	353.8	423.2	:	208.3
	RATE OF INCREASE OVER ONE MONTH (IRELAND 3 MONTHS) (T/T-1) TAUX DE CROISSANCE SUR UN MOIS (IRLANDE 3 MOIS)													
83J/83J	0.8	0.9	1.3	0.2	2.0	0.6	6.1	1.0		0.9	0.4	0.6	4.6	0.7
83A/83J	0.5	0.9	0.8	0.4	0.4	0.8	0.4	0.4	0.2	0.0	-0.1	0.5	2.1	0.7
83S/83A	1.1	0.4	0.4	3.3	-0.2	-0.1	1.1	0.3		0.9	0.2	0.0	9.3	0.4
83O/83S	0.0	-0.3	0.1	0.4	-1.3	-1.0	0.4	0.0		-0.5	1.1	0.3	0.9	0.4
83N/83O	0.1	-0.3	-0.0	0.3	0.5	1.4	-1.2	0.1	1.7	0.9	0.2	0.4	0.0	0.4
83D/83N	0.1	0.4	0.0	0.2	-0.1	-0.5	2.1	-0.2		-1.4	1.9	2.7	0.0	0.0
84J/83D	0.9	0.6	0.9	2.3	0.3	-1.7	0.6	-0.2		0.9	0.5	1.9	0.7	-0.1
84F/84J	0.4	0.1	0.7	0.9	0.3	0.4	-0.1	-0.6	3.3	1.4	2.8	1.3	3.3	-0.1
84M/84F	0.2	-0.2	0.3	0.5	0.0	0.2	-0.3	-0.1		0.0	1.3	0.3	0.0	0.4
84A/84M	1.5	0.0	5.0	0.1	0.8	0.7	0.2	1.1		0.9	2.0	0.3	0.1	0.9
84M/84A	-0.4	0.1	-3.5	0.9	0.3	0.4	0.2	0.6	0.6	0.0	0.2	0.9	0.0	0.8
84J/84M	0.4	0.4	0.4	0.6	0.2	-1.0	0.1	0.5		0.9	0.0	0.5	11.9	0.3
84J/84J	0.4	-0.3	1.7	0.0	0.2	1.3	0.0	-0.2		0.0	0.0	0.1	0.1	-0.1
84A/84J	0.9	-0.6	1.5	1.9	0.2	0.6	0.1	0.2	1.2	0.0	0.1	0.7	0.0	0.0
84S/84A	:	0.3	0.4	0.4	-0.1	0.6	0.1	:		0.4	1.2	0.3	:	0.3
	RATE OF INCREASE OVER 12 MONTHS (T/T-12) TAUX DE CROISSANCE SUR 12 MOIS													
83/82J	9.9	2.0	10.2	19.4	4.1	7.8	9.9	5.7		6.3	23.0	15.7	30.0	1.5
83/82A	8.5	2.6	10.3	12.6	4.9	8.9	9.3	5.7	12.6	5.8	22.1	14.7	32.8	2.1
83/82S	9.4	2.7	10.0	15.7	4.7	7.8	9.9	6.4		5.2	22.2	14.7	44.9	2.8
83/82O	8.2	1.9	9.3	13.8	2.6	5.5	9.8	5.6		2.8	23.5	11.3	42.6	3.2
83/82N	7.6	1.7	7.1	13.2	3.6	6.9	7.6	5.2	12.1	4.7	23.6	14.2	42.6	3.5
83/82D	7.4	2.1	6.5	13.1	4.4	7.1	10.5	4.5		5.3	23.5	10.4	42.6	3.9
84/83J	7.9	3.2	7.3	14.3	4.6	4.1	12.0	4.5		5.7	16.8	10.9	21.8	4.4
84/83F	7.4	3.5	8.1	13.4	5.0	3.9	11.4	3.5	10.3	6.7	8.5	10.4	25.9	5.5
84/83M	7.4	4.3	8.2	12.6	5.1	3.5	10.9	3.2		6.7	9.0	10.4	24.3	6.8
84/83A	7.6	4.5	12.2	10.6	4.4	3.1	8.1	2.5		7.1	11.1	10.3	22.7	5.9
84/83M	5.8	2.9	6.9	10.1	3.7	1.2	9.9	2.1	5.9	5.1	10.1	10.8	22.7	5.4
84/83J	5.9	3.1	6.4	10.3	3.3	0.2	9.8	2.9		5.1	11.0	10.1	37.4	5.0
84/83J	5.4	1.8	6.8	10.1	1.5	0.8	3.6	1.6		4.1	10.6	9.5	31.5	4.2
84/83A	5.7	0.4	7.6	11.8	1.3	0.7	3.2	1.5	6.9	4.1	10.8	9.7	28.7	3.5
84/83S	:	0.3	7.6	8.7	1.4	1.3	2.2	:		3.6	12.0	10.0	:	3.3

CONSUMER PRICES
RECREATION AND EDUCATION, ETC

PRIX A LA CONSOMMATION
LOISIRS, SPECTACLES ENSEIGNEMENTS ETC

	EUR10	BR DEUTSCH LAND	FRANCE	ITALIA	NEDER- LAND	BELGIQUE BELGIE	LUXEM- BOURG	UNITED KINGDOM	IRELAND	DANMARK	ELLAS	ESPANA	PORTU- GAL	USA
	PRICE INDICES 1975 = 100 INDICES DE PRIX													
1979 #	136.1	110.1	133.7	159.8	113.7	117.4	124.9	155.1	168.7	138.5	176.1	206.6	173.4	:
1980 #	151.0	113.0	146.6	189.6	117.6	120.7	133.5	179.1	195.4	150.0	201.7	231.1	203.2	:
1981 #	167.3	117.8	161.8	228.2	122.5	125.9	143.6	196.0	231.8	165.2	265.2	264.0	233.2	:
1982 #	183.2	123.3	180.1	260.9	128.1	133.8	157.7	211.8	277.0	183.6	317.5	302.5	278.8	:
1983 #	196.8	126.7	187.2	306.2	131.9	143.3	171.2	221.0	313.8	198.0	393.3	338.6	342.6	:
1983 J	198.2	125.8	194.5	307.3	132.5	143.7	171.7	221.7		198.0	396.8	336.8	336.7	:
1983 A	198.8	125.4	195.2	310.4	132.2	143.1	173.2	222.4	315.3	199.0	397.1	338.8	339.1	:
1983 S	199.9	125.9	196.5	311.2	131.7	144.2	174.4	222.6		200.0	420.2	345.1	342.7	:
1983 O	201.3	126.5	197.9	314.4	132.3	146.9	175.6	223.0		202.0	426.2	351.3	364.2	:
1983 N	202.8	127.4	198.8	319.5	132.4	147.4	176.4	224.3	329.7	203.0	429.4	353.1	373.3	:
1983 D	203.3	127.9	199.4	320.7	132.3	147.4	177.4	224.6		203.0	430.0	355.0	383.2	:
1984 J	204.6	129.5	201.1	323.4	133.1	150.7	178.6	224.3		205.0	433.2	358.9	393.8	:
1984 F	206.4	129.3	202.3	330.5	133.3	151.5	179.7	226.7	332.0	205.0	433.5	359.7	401.0	:
1984 M	206.9	129.6	203.2	332.7	133.5	151.9	180.0	225.9		205.0	442.1	361.1	405.2	:
1984 A	208.6	129.1	204.5	336.6	133.7	153.1	180.8	228.9		207.0	447.2	363.5	435.0	:
1984 M	209.1	129.1	205.5	337.8	133.9	152.9	181.3	229.0	339.3	208.0	454.2	366.2	438.9	:
1984 J	210.1	129.6	206.3	339.4	134.7	154.6	181.0	229.4		210.0	463.1	367.8	441.9	:
1984 J	210.3	129.0	207.0	341.2	135.1	155.1	181.6	229.0		210.0	465.0	371.6	442.8	:
1984 A	210.5	128.9	207.4	342.4	135.2	154.9	182.5	229.2	341.3	210.0	463.9	372.3	445.2	:
1984 S	:	128.9	208.2	346.7	134.4	156.1	183.3	:		211.0	496.8	382.3	:	:
	RATE OF INCREASE OVER ONE MONTH (IRELAND 3 MONTHS) (T/T-1) TAUX DE CROISSANCE SUR UN MOIS (IRLANDE 3 MOIS)													
83J/83J	0.2	-0.9	0.5	0.7	0.1	0.3	1.2	0.2		0.0	1.4	0.1	2.3	:
83A/83J	0.3	-0.3	0.4	1.0	-0.2	-0.4	0.9	0.3	1.6	0.5	0.1	0.6	0.7	:
83S/83A	0.5	0.4	0.7	0.3	-0.4	0.8	0.7	0.1		0.5	5.8	1.9	1.1	:
83O/83S	0.7	0.5	0.7	1.0	0.5	1.9	0.7	0.2		1.0	1.4	1.8	6.3	:
83N/83O	0.8	0.7	0.5	1.6	0.1	0.3	0.5	0.6	4.6	0.5	0.7	0.5	2.5	:
83D/83N	0.2	0.4	0.3	0.4	-0.1	0.0	0.6	0.1		0.0	0.1	0.5	2.7	:
84J/83D	0.6	1.3	0.9	0.8	0.6	2.2	0.7	-0.1		1.0	0.7	1.1	2.8	:
84F/84J	0.9	-0.2	0.6	2.2	0.2	0.5	0.6	1.1	0.7	0.0	0.1	0.2	1.8	:
84M/84F	0.3	0.2	0.4	0.7	0.2	0.3	0.2	-0.4		0.0	2.0	0.4	1.0	:
84A/84M	0.8	-0.4	0.6	1.2	0.1	0.8	0.4	1.3		1.0	1.2	0.7	7.4	:
84M/84A	0.3	0.0	0.5	0.4	0.1	-0.1	0.3	0.0	2.2	0.5	1.6	0.7	0.9	:
84J/84M	0.4	0.4	0.4	0.5	0.6	1.1	-0.2	0.2		1.0	2.0	0.4	0.7	:
84J/84J	0.1	-0.5	0.3	0.5	0.3	0.3	0.3	-0.2		0.0	0.4	1.0	0.2	:
84A/84J	0.1	-0.1	0.2	0.4	0.1	-0.1	0.5	0.1	0.6	0.0	-0.2	0.2	0.5	:
84S/84A	:	0.0	0.4	1.3	-0.6	0.8	0.4	:		0.5	7.1	2.7	:	:
	RATE OF INCREASE OVER 12 MONTHS (T/T-12) TAUX DE CROISSANCE SUR 12 MOIS													
83/82J	8.3	3.1	7.8	18.3	3.2	7.1	8.3	4.3		7.6	25.7	11.8	19.4	:
83/82A	8.3	3.3	8.1	17.4	2.7	6.2	8.9	4.7	12.1	7.0	24.4	11.7	19.5	:
83/82S	7.8	2.5	8.3	16.8	2.0	6.4	8.2	4.0		6.4	23.3	11.6	20.7	:
83/82O	7.9	2.7	8.6	16.8	2.1	8.3	7.9	3.7		6.3	23.9	10.5	22.8	:
83/82N	7.9	2.9	8.3	16.8	2.4	7.9	7.7	3.7	11.7	6.3	23.7	10.2	24.7	:
83/82D	7.7	2.4	7.8	16.8	2.6	7.9	8.1	3.7		6.3	23.5	10.1	26.1	:
84/83J	6.7	2.2	7.5	12.5	1.5	8.1	7.9	3.4		6.8	23.9	10.5	27.6	:
84/83F	6.8	1.7	7.3	12.7	1.4	8.0	8.0	4.3	10.7	6.2	21.4	9.9	26.9	:
84/83M	6.3	2.0	6.9	11.1	1.5	7.9	7.8	3.6		6.2	20.5	10.1	27.5	:
84/83A	6.6	1.7	7.0	11.6	1.6	8.0	7.7	4.5		5.1	20.2	9.7	35.6	:
84/83M	6.2	2.1	6.6	11.2	1.5	7.8	6.9	3.6	9.3	5.1	18.9	9.2	35.7	:
84/83J	6.2	2.0	6.6	11.2	1.7	8.0	6.7	3.7		6.1	18.3	9.4	34.2	:
84/83J	6.1	2.5	6.4	11.0	2.0	7.9	5.8	3.3		6.1	17.2	10.3	31.5	:
84/83A	5.9	2.8	6.2	10.3	2.3	8.2	5.4	3.1	8.2	5.5	16.8	9.9	31.3	:
84/83S	:	2.4	6.0	11.4	2.1	8.3	5.1	:		5.5	18.2	10.8	:	:

CONSUMER PRICES
OTHER GOODS AND SERVICES

PRIX A LA CONSOMMATION
AUTRES BIENS ET SERVICES

	EUR10	BR DEUTSCH LAND	FRANCE	ITALIA	NEDER- LAND	BELGIQUE BELGIE	LUXEM- BOURG	UNITED KINGDOM	IRELAND	DANMARK	ELLAS	ESPANA	PORTU- GAL	USA
	PRICE INDICES			1975 = 100				INDICES DE PRIX						
1979 Ø	155.1	117.5	148.6	182.7	134.5	132.9	135.9	174.2	172.7	150.8	199.9	239.1	189.2	142.5
1980 Ø	185.4	124.8	176.8	237.3	145.6	137.8	141.8	211.4	210.7	168.4	275.3	292.6	214.1	165.9
1981 Ø	212.1	132.2	203.6	288.2	154.4	145.2	153.0	238.1	262.4	184.4	343.4	336.3	255.3	188.7
1982 Ø	237.3	138.1	226.1	337.9	162.3	151.5	162.4	260.9	318.2	202.9	454.6	391.6	308.1	206.0
1983 Ø	263.6	143.4	252.0	393.8	167.2	163.6	177.3	279.3	365.2	220.5	585.1	459.1	378.1	210.8
1983 J	264.9	144.5	253.9	394.1	167.7	164.9	179.4	280.3		222.0	594.5	462.1	379.4	210.5
1983 A	266.9	145.0	255.9	400.4	167.9	165.1	181.2	281.5	369.5	222.0	592.2	464.6	391.9	211.3
1983 S	268.6	145.2	258.1	404.2	168.2	165.5	181.7	282.5		224.0	599.7	471.9	393.3	212.8
1983 O	270.2	145.4	260.0	406.4	168.3	165.8	182.7	284.2		226.0	609.6	475.3	402.5	213.4
1983 N	271.8	145.4	260.8	410.7	168.5	166.0	183.0	285.8	376.6	227.0	616.7	482.7	405.9	213.8
1983 D	273.7	145.7	261.7	411.9	168.7	166.4	183.2	287.2		227.0	669.0	486.8	417.7	214.1
1984 J	275.0	145.9	262.6	417.2	169.9	166.0	183.4	288.5		228.0	644.2	490.0	421.7	216.0
1984 F	278.2	146.2	263.8	425.4	170.2	167.2	183.9	293.6	383.4	230.0	641.5	494.8	432.5	217.2
1984 M	279.3	146.4	264.8	428.0	170.7	168.7	184.2	293.4		230.0	656.1	505.5	437.3	217.7
1984 A	281.6	146.4	266.1	430.4	171.9	170.8	185.3	297.0		231.0	682.9	509.5	449.2	218.2
1984 M	282.5	146.4	268.1	433.3	172.0	171.5	186.3	297.1	386.4	235.0	670.5	513.6	459.2	219.6
1984 J	284.2	147.6	270.2	436.5	172.3	172.9	186.4	297.9		238.0	675.5	516.0	470.5	221.2
1984 J	285.4	148.1	272.3	438.1	172.3	176.3	186.5	297.2		238.0	683.6	517.9	480.8	222.7
1984 A	286.7	148.1	273.6	442.0	172.5	176.7	186.5	298.0	402.2	238.0	683.8	520.0	491.2	224.1
1984 S	:	148.1	274.6	445.6	172.7	176.1	186.5	:		225.0	701.6	524.4	:	224.7
	RATE OF INCREASE OVER ONE MONTH (IRELAND 3 MONTHS) (T/T-1) TAUX DE CROISSANCE SUR UN MOIS (IRLANDE 3 MOIS)													
83J/83J	0.6	0.8	1.0	0.7	0.1	0.4	0.7	0.2		0.9	0.2	0.8	0.3	0.4
83A/83J	0.8	0.3	0.8	1.6	0.1	0.1	1.0	0.4	2.5	0.0	-0.4	0.5	3.3	0.4
83S/83A	0.6	0.1	0.9	0.9	0.2	0.2	0.3	0.4		0.9	1.3	1.6	0.4	0.7
83O/83S	0.6	0.1	0.7	0.5	0.1	0.2	0.6	0.6		0.9	1.7	0.7	2.3	0.3
83N/83O	0.6	0.0	0.3	1.1	0.1	0.1	0.2	0.6	1.9	0.4	1.2	1.6	0.8	0.2
83D/83N	0.7	0.2	0.3	0.3	0.1	0.2	0.1	0.5		0.0	8.5	0.8	2.9	0.1
84J/83D	0.5	0.1	0.3	1.3	0.7	-0.2	0.1	0.5		0.4	-3.7	0.7	1.0	0.9
84F/84J	1.2	0.2	0.5	2.0	0.2	0.7	0.3	1.8	1.8	0.9	-0.4	1.0	2.6	0.5
84M/84F	0.4	0.1	0.4	0.6	0.3	0.9	0.2	-0.1		0.0	2.3	2.2	1.1	0.2
84A/84M	0.8	0.0	0.5	0.6	0.7	1.2	0.6	1.2		0.4	4.1	0.8	2.7	0.2
84M/84A	0.3	0.0	0.8	0.7	0.1	0.4	0.5	0.0	0.8	1.7	-1.8	0.8	2.2	0.7
84J/84M	0.6	0.8	0.8	0.7	0.2	0.8	0.1	0.3		1.3	0.8	0.5	2.5	0.7
84J/84J	0.4	0.3	0.8	0.4	0.0	2.0	0.1	-0.2		0.0	1.2	0.4	2.2	0.7
84A/84J	0.4	0.0	0.5	0.9	0.1	0.2	0.0	0.3	4.1	0.0	0.0	0.4	2.2	0.7
84S/84A	:	0.0	0.4	0.8	0.1	-0.3	0.0	:		-5.5	2.6	0.8	:	0.2
	RATE OF INCREASE OVER 12 MONTHS (T/T-12) TAUX DE CROISSANCE SUR 12 MOIS													
83/82J	11.2	4.1	11.2	16.7	2.9	9.1	10.8	7.2		9.4	31.0	16.2	21.7	0.9
83/82A	11.3	4.3	11.8	17.1	2.9	8.7	10.5	7.0	11.9	8.3	29.6	16.3	23.3	0.8
83/82S	11.0	4.2	12.2	16.4	2.8	8.4	10.1	6.2		7.7	28.5	17.0	23.5	1.2
83/82O	10.8	4.2	12.6	15.8	2.4	8.3	10.5	6.0		7.1	25.9	17.2	25.5	1.5
83/82N	10.5	4.1	12.4	14.9	2.4	7.8	9.2	6.2	12.7	7.6	26.1	17.6	24.5	2.3
83/82D	9.9	3.6	11.3	14.0	2.5	7.3	9.0	6.7		7.6	20.6	16.7	28.0	3.5
84/83J	9.4	3.6	9.9	12.8	3.2	5.4	8.6	6.5		7.0	24.6	15.1	26.3	3.7
84/83F	9.2	3.6	9.0	12.2	3.0	4.2	9.9	7.9	9.9	7.5	21.2	13.7	26.1	4.0
84/83M	8.9	3.6	8.2	11.8	3.0	5.0	9.8	7.6		7.0	20.4	15.2	25.3	3.9
84/83A	8.7	3.5	7.5	11.7	3.1	5.1	5.1	7.3		6.9	24.1	12.8	24.3	4.5
84/83M	7.8	3.3	7.4	11.2	2.8	4.8	4.8	6.8	7.2	6.8	10.8	12.6	23.6	5.1
84/83J	8.0	2.9	7.4	11.6	2.8	5.2	4.7	6.5		8.2	13.8	12.5	24.4	5.5
84/83J	7.8	2.5	7.2	11.2	2.7	6.9	4.0	6.0		7.2	15.0	12.1	26.7	5.8
84/83A	7.4	2.1	6.9	10.4	2.7	7.0	2.9	5.9	8.8	7.2	15.5	11.9	25.3	6.1
84/83S	:	2.0	6.4	10.2	2.7	6.4	2.6	:		0.4	17.0	11.1	:	5.6

CONSUMER PRICES

PRIX A LA CONSOMMATION

GENERAL INDEX

INDICE GENERAL

	SWITZERLAND SUISSE SCHWEIZ	AUSTRIA AUTRICHE OESTERREICH	NORWAY NORVEGE NORGE	SWEDEN SUEDE SVERIGE
	PRICE INDICES		1975 = 100	INDICES DE PRIX
1979 Ø	107.9	121.6	135.0	144.6
1980 Ø	112.2	129.3	149.7	164.5
1981 Ø	119.5	138.1	170.0	184.4
1982 Ø	126.2	145.6	189.3	200.2
1983 Ø	130.0	150.4	205.3	217.9
1983 A	130.2	151.1	206.1	219.6
1983 S	130.4	151.4	207.8	221.2
1983 O	130.7	152.3	208.8	223.0
1983 N	131.5	152.5	209.3	224.3
1983 D	131.5	153.0	210.4	226.2
1984 J	132.0	156.8	212.3	229.3
1984 F	132.5	157.5	213.4	228.5
1984 M	133.4	158.0	215.8	231.7
1984 A	133.6	158.0	216.7	233.2
1984 M	133.3	157.6	217.0	234.9
1984 J	133.7	159.0	218.1	234.2
1984 J	133.5	158.7	219.0	234.9
1984 A	134.0	160.2	218.8	236.7
1984 S	133.9	159.9	220.5	238.2
1984 O	134.7	:	:	:
	RATE OF INCREASE OVER ONE MONTH		(T/T-1)	TAUX DE CROISSANCE SUR UN MOIS
83A/83J	0.2	0.5	-0.2	0.5
83S/83A	0.2	0.2	0.9	0.7
83O/83S	0.2	0.6	0.5	0.8
83N/83O	0.6	0.1	0.3	0.6
83D/83N	0.0	0.4	0.5	0.8
84J/83D	0.4	2.5	0.9	1.4
84F/84J	0.4	0.5	0.5	-0.4
84M/84F	0.6	0.3	1.1	1.4
84A/84M	0.2	0.0	0.4	0.6
84M/84A	-0.2	-0.3	0.1	0.7
84J/84M	0.3	0.9	0.5	-0.3
84J/84J	-0.2	-0.2	0.4	0.3
84A/84J	0.4	0.9	-0.1	0.8
84S/84A	-0.1	-0.2	0.8	0.6
84O/84S	0.6	:	:	:
	RATE OF INCREASE OVER 12 MONTHS		(T/T-12)	TAUX DE CROISSANCE SUR 12 MOIS
83/82A	1.7	3.2	7.6	9.2
83/82S	1.4	3.3	7.8	9.4
83/82O	1.4	3.6	7.5	8.8
83/82N	1.8	3.7	7.0	8.6
83/82D	2.1	3.8	7.1	9.2
84/83J	2.6	5.6	6.4	8.2
84/83F	2.9	5.7	6.5	7.8
84/83M	3.4	5.8	6.6	9.0
84/83A	3.2	5.9	6.6	8.8
84/83M	2.9	5.9	6.6	9.0
84/83J	2.8	6.3	6.4	8.0
84/83J	2.8	5.6	6.1	7.4
84/83A	2.9	6.0	6.2	7.8
84/83S	2.7	5.6	6.1	7.7
84/83O	3.1	:	:	:

K

CONSUMER PRICES

PRIX A LA CONSOMMATION

	EUR10	BR DEUTSCH LAND	FRANCE	ITALIA	NEDER- LAND	BELGIQUE BELGIË	LUXEM- BOURG	UNITED KINGDOM	IRELAND	DANMARK	ELLAS	ESPAÑA	PORTU- GAL	USA	CANADA	JAPAN
	PRICE INDICES								1975 = 100		INDICES DE PRIX					
1955	39.2	52.0	33.0	36.3	39.0	45.6	51.3	32.0	29.6	32.4	40.8	21.5	28.9	49.8	48.8	30.7
1956	40.4	53.2	33.6	37.5	40.0	46.8	51.6	33.6	30.9	34.4	42.3	22.7	29.8	50.5	49.5	30.8
1957	41.4	54.3	34.5	37.9	41.6	48.3	53.8	34.8	32.1	34.7	43.3	25.2	30.3	52.2	51.0	31.8
1958	43.3	55.5	39.7	39.0	42.2	48.9	54.3	35.9	33.6	35.0	43.8	28.6	30.7	53.6	52.4	31.7
1959	44.1	56.1	42.1	39.0	42.6	49.6	54.5	36.1	33.6	35.5	44.9	30.7	31.1	54.1	53.0	32.0
1960	44.9	56.9	43.8	39.7	43.6	49.7	54.8	36.4	33.7	36.0	45.5	31.4	32.0	55.0	53.6	32.9
1961	46.0	58.3	44.9	40.1	44.2	50.2	55.0	37.7	34.7	37.2	46.4	31.7	32.5	55.5	54.2	34.7
1962	47.9	60.6	47.2	42.4	45.3	50.7	55.5	39.2	36.1	40.0	46.2	33.5	33.4	56.2	54.8	37.0
1963	49.9	62.4	50.0	45.6	46.8	52.0	57.1	40.0	37.0	42.5	47.6	36.4	34.0	56.9	55.7	40.2
1964	51.7	63.8	51.6	48.3	49.5	54.1	58.9	41.4	39.5	43.8	48.0	39.0	35.2	57.6	56.8	41.7
1965	53.6	65.9	53.0	50.5	51.8	56.3	60.9	43.4	41.5	46.5	49.4	44.2	36.4	58.6	58.1	44.5
1966	55.5	68.2	54.4	51.6	54.8	58.7	62.5	45.1	42.7	50.0	51.9	46.9	38.3	60.3	60.3	46.7
1967	57.0	69.4	55.9	53.6	56.7	60.4	64.3	46.2	44.1	54.0	52.8	49.9	40.4	62.0	62.5	48.6
1968	58.7	70.5	58.4	54.2	58.8	62.0	65.9	48.4	46.1	58.2	53.0	52.4	42.8	64.6	65.0	51.2
1969	61.0	71.8	62.3	55.7	63.1	63.9	67.5	51.0	49.6	60.3	54.3	53.5	46.6	68.1	67.9	53.9
1970	64.0	74.3	65.7	58.4	65.9	66.9	70.6	54.2	53.6	64.3	56.0	56.6	49.6	72.1	70.2	58.0
1971	67.8	78.2	69.2	61.2	70.9	70.1	73.9	59.3	58.4	68.0	57.7	61.3	55.5	75.2	72.2	61.5
1972	72.0	82.5	73.4	64.8	76.6	74.1	77.7	63.6	63.5	72.4	60.2	66.3	61.4	77.7	75.7	64.3
1973	78.0	88.2	78.8	71.8	82.8	78.7	82.5	69.4	70.7	79.1	69.5	73.9	69.4	82.5	81.4	71.9
1974	88.2	94.4	89.5	85.5	91.0	88.7	90.3	80.5	82.7	91.2	88.2	85.5	86.8	91.6	90.3	89.4
1975	100.0	100.0	100.0	100.0	100.0	100.0	100.0	100.0	100.0	100.0	100.0	100.0	100.0	100.0	100.0	100.0
1976	111.0	104.3	109.6	116.7	109.0	109.2	109.8	116.5	118.0	109.0	113.3	117.6	120.1	105.7	107.5	109.3
1977	123.2	108.1	119.9	138.3	116.0	116.9	117.2	135.0	134.1	121.1	127.1	146.5	153.0	112.6	116.1	118.1
1978	132.6	111.1	130.8	155.0	120.9	122.1	120.8	146.2	144.3	133.3	143.0	175.4	186.6	121.2	126.5	122.6
1979	146.4	115.6	144.8	177.9	126.1	127.6	126.3	165.8	163.4	146.1	170.3	202.9	231.8	134.9	138.1	127.0
1980	167.4	122.0	164.5	215.7	134.9	136.1	134.2	195.6	193.2	164.0	212.6	234.5	270.2	153.1	152.1	137.2
1981	188.9	129.2	186.5	257.8	144.1	146.5	145.1	218.9	232.6	183.3	264.7	268.6	324.2	168.9	171.0	144.0
1982	209.7	136.1	208.9	300.2	152.7	159.2	158.6	237.7	272.5	201.9	320.1	310.0	396.7	179.3	189.5	147.8
1983	227.5	140.0	228.5	344.3	157.0	171.4	172.4	248.6	300.2	215.8	385.8	344.7	497.9	185.1	200.5	150.3

L

CONSUMER PRICES

PRIX A LA CONSOMMATION

	EUR10	BR DEUTSCH LAND	FRANCE	ITALIA	NEDER- LAND	BELGIQUE BELGIE	LUXEM- BOURG	UNITED KINGDOM	IRELAND	DANMARK	ELLAS	ESPAÑA	PORTU- GAL	USA	CANADA	JAPAN
	PRICE INDICES								INDICES DE PRIX							
	1975 = 100															
1975 Ø	100.0	100.0	100.0	100.0	100.0	100.0	100.0	100.0	100.0	100.0	100.0	100.0	100.0	100.0	100.0	100.0
1976 Ø	111.0	104.3	109.6	116.7	109.0	109.2	109.8	116.5	118.0	109.0	113.3	117.6	120.1	105.7	107.5	109.3
1977 Ø	123.2	108.1	119.9	138.3	116.0	116.9	117.2	135.0	134.1	121.1	127.1	146.5	153.0	112.6	116.1	118.1
1978 Ø	132.6	111.1	130.8	155.0	120.9	122.1	120.8	146.2	144.3	133.3	143.0	175.4	186.6	121.2	126.5	122.6
1979 Ø	146.4	115.6	144.8	177.9	126.1	127.6	126.3	165.8	163.4	146.1	170.3	202.9	231.8	134.9	138.1	127.0
1980 Ø	167.4	122.0	164.5	215.7	134.9	136.1	134.2	195.6	193.2	164.0	212.6	234.5	270.2	153.1	152.1	137.2
1981 Ø	188.9	129.2	186.5	257.8	144.1	146.5	145.1	218.9	232.6	183.3	264.7	268.6	324.2	168.9	171.0	144.0
1982 Ø	209.7	136.1	208.9	300.2	152.7	159.2	158.6	237.7	272.5	201.9	320.1	310.0	396.7	179.3	189.5	147.8
1975 J	94.6	97.5	95.5	95.4	95.7	95.3	95.0	88.9		97.4	94.2	94.2	94.5	96.8	95.6	96.0
1975 F	95.5	98.0	96.2	96.8	96.0	96.4	96.4	90.4	95.4	97.6	94.5	95.0	93.1	97.5	96.3	96.3
1975 M	96.4	98.5	97.0	96.9	97.4	97.0	97.1	92.2		98.3	97.9	95.8	97.8	97.9	96.8	97.2
1975 A	97.9	99.2	97.8	98.2	98.7	98.1	98.3	95.7		98.7	99.0	97.4	96.9	98.4	97.3	99.3
1975 M	99.3	99.8	98.6	99.0	99.3	98.9	98.9	99.8	101.2	100.0	99.2	98.6	97.2	98.8	98.1	100.0
1975 J	100.2	100.6	99.2	99.8	99.5	99.3	99.6	101.7		100.6	99.4	98.9	100.1	99.6	99.6	100.0
1975 J	100.7	100.6	100.0	100.2	100.0	100.2	100.5	102.7		101.1	98.5	100.5	100.9	100.7	100.9	100.2
1975 A	101.2	100.4	100.7	100.8	100.9	101.0	100.9	103.3	100.4	101.4	97.6	102.0	99.4	101.0	101.9	100.0
1975 S	102.0	100.9	101.5	101.6	102.2	101.9	101.6	104.2		102.3	101.7	103.6	104.0	101.5	102.2	101.8
1975 O	102.9	101.2	102.3	102.7	103.0	103.0	103.2	105.7		99.7	104.4	103.6	103.1	102.1	103.1	103.6
1975 N	103.7	101.5	102.9	103.9	103.4	104.1	104.0	107.0	103.1	101.3	105.9	104.3	103.4	102.7	104.0	102.8
1975 D	104.4	101.8	103.5	104.7	103.6	104.7	104.6	108.3		101.5	107.5	106.0	109.7	103.1	104.2	102.8
1976 J	105.5	102.6	104.6	105.8	104.8	105.6	106.3	109.7		102.0	108.2	109.7	117.1	103.4	104.8	105.0
1976 F	106.6	103.2	105.4	108.2	105.7	106.0	106.8	111.0	110.7	102.7	107.9	110.6	112.7	103.6	105.1	105.6
1976 M	107.6	103.4	106.3	110.3	106.2	106.7	107.0	111.7		107.2	111.1	112.3	115.7	103.9	105.6	106.0
1976 A	109.1	104.1	107.2	113.3	108.3	107.6	108.5	113.9		107.5	112.2	114.1	109.3	104.3	106.0	108.6
1976 M	110.1	104.3	108.0	115.5	108.9	108.4	109.2	115.1	117.6	108.6	113.3	116.0	106.1	104.9	106.9	108.9
1976 J	110.5	104.5	108.4	116.1	109.0	108.6	109.3	115.6		108.3	114.2	116.5	112.9	105.5	107.4	109.1
1976 J	110.8	104.3	109.4	116.7	108.7	109.5	110.2	116.0		108.4	112.7	117.7	122.3	106.1	107.8	109.7
1976 A	111.6	104.6	110.2	117.8	109.4	109.9	111.0	117.6	119.3	109.2	111.2	118.5	124.4	106.6	108.3	108.8
1976 S	112.8	104.7	111.4	119.9	110.4	111.3	111.1	119.1		111.9	114.5	120.3	128.0	107.0	108.8	111.7
1976 O	114.4	104.9	112.4	123.4	111.9	111.6	112.0	121.3		113.1	116.4	123.9	132.2	107.5	109.5	112.4
1976 N	115.5	105.1	113.3	126.1	112.2	112.0	112.7	122.9	124.4	114.4	118.0	125.2	134.0	107.8	109.9	112.4
1976 D	116.4	105.5	113.8	127.8	112.2	112.6	113.5	124.5		114.7	120.1	127.0	139.5	108.1	110.3	113.6
1977 J	117.8	106.6	114.1	129.4	112.3	113.8	114.6	127.9		114.7	120.5	131.0	132.7	108.7	111.2	114.7
1977 F	118.9	107.0	114.9	131.9	113.0	114.6	115.4	129.2	129.1	114.8	119.8	133.0	136.9	109.8	112.2	115.3
1977 M	119.9	107.3	116.0	133.6	113.5	114.5	115.9	130.4		116.5	123.1	136.2	149.0	110.5	113.4	116.0
1977 A	121.5	107.7	117.4	135.2	115.6	115.1	116.6	133.8		117.7	125.6	138.7	154.7	111.4	114.0	117.9
1977 M	122.5	108.1	118.6	136.9	116.0	116.3	117.0	134.8	134.0	119.4	126.7	139.9	156.0	112.0	114.9	119.0
1977 J	123.3	108.6	119.5	137.8	116.2	117.0	117.6	136.2		120.0	127.5	143.9	155.7	112.8	115.7	118.4
1977 J	123.7	108.3	120.5	138.6	116.1	117.4	118.2	136.4		120.8	127.1	148.6	155.8	113.3	116.8	118.1
1977 A	124.3	108.4	121.2	139.9	116.7	117.8	117.8	137.0	135.4	121.9	125.4	153.4	158.4	113.7	117.3	118.1
1977 S	125.2	108.6	122.2	141.7	117.5	118.6	117.6	137.8		123.2	128.9	155.5	157.6	114.1	118.0	120.2
1977 O	126.1	108.7	123.2	143.6	118.0	118.8	118.1	138.4		127.4	131.9	157.9	161.2	114.4	119.1	120.8
1977 N	126.7	108.9	123.7	145.0	118.2	119.3	118.7	139.0	137.8	128.6	133.5	159.2	163.3	115.0	119.9	119.4
1977 D	127.2	109.2	124.0	145.7	118.3	119.7	118.4	139.8		128.7	135.5	160.4	167.0	115.4	120.7	119.1
1978 J	127.9	109.8	124.6	146.9	117.8	120.3	119.0	140.6		129.2	136.6	163.0	170.6	116.1	121.2	119.6
1978 F	128.7	110.3	125.5	148.4	118.3	120.8	119.2	141.4	139.8	129.8	135.6	164.6	171.1	116.8	121.9	120.1
1978 M	129.7	110.6	126.6	150.3	119.4	121.1	119.6	142.3		130.7	139.6	166.7	172.8	117.7	123.3	121.2
1978 A	130.9	110.9	128.0	151.8	120.3	121.2	120.2	144.4		131.2	142.1	170.2	184.4	118.8	123.6	122.5
1978 M	131.7	111.2	129.2	153.2	120.5	121.4	120.4	145.2	142.2	132.3	143.4	172.0	186.7	119.9	125.3	123.2

L

1978 J	132.5	111.5	130.2	154.5	120.5	121.4	120.8	146.3		132.6	144.8	173.6	186.7	121.1	126.4	122.5
1978 J	133.2	111.3	131.8	155.4	121.1	122.1	121.0	147.0		132.9	142.7	177.4	189.9	122.0	128.3	123.0
1978 A	133.6	111.2	132.6	156.2	121.6	122.6	121.1	147.9	146.6	133.5	140.4	180.6	193.0	122.6	128.4	123.1
1978 S	134.5	111.1	133.4	158.7	122.5	123.1	121.3	148.5		134.4	144.4	182.0	195.9	123.6	128.2	124.6
1978 O	135.4	111.2	134.7	160.1	122.9	123.4	122.0	149.2		136.9	147.1	183.6	202.6	124.6	129.5	124.8
1978 H	136.2	111.5	135.4	161.8	123.0	123.8	122.4	150.2	148.7	137.8	148.7	184.4	205.0	125.2	130.5	123.5
1978 D	136.9	111.9	136.0	162.6	122.9	124.4	122.4	151.5		137.9	151.1	187.0	209.1	125.8	130.9	123.3
1979 J	138.6	112.9	137.2	165.3	122.7	125.1	123.4	153.7		137.9	157.0	190.2	210.0	127.0	131.9	123.4
1979 F	139.7	113.5	138.2	167.8	123.2	125.5	124.0	155.0	154.9	138.7	157.0	191.6	213.9	128.4	133.1	123.0
1979 M	140.9	114.0	139.4	170.1	124.3	125.6	124.2	156.2		139.9	162.0	193.6	217.6	129.7	134.7	124.0
1979 A	142.5	114.6	140.8	172.2	125.2	125.9	124.5	158.9		140.4	165.4	196.6	224.3	131.2	135.7	125.7
1979 M	143.6	114.9	142.3	174.1	125.4	126.2	125.3	160.2	159.8	142.7	167.3	198.9	231.4	132.8	137.0	127.0
1979 J	144.9	115.5	143.5	175.5	125.5	126.9	125.8	162.9		144.0	168.9	200.7	232.1	134.3	137.6	127.1
1979 J	147.5	116.3	145.4	177.0	125.9	127.9	126.4	170.0		147.3	171.1	204.9	232.9	135.8	138.7	128.2
1979 A	148.6	116.4	146.9	179.2	126.6	128.5	126.8	171.3	166.5	149.9	169.6	207.0	238.2	137.1	139.2	126.9
1979 S	150.3	116.7	148.1	183.8	127.8	128.8	127.5	173.0		151.6	174.6	209.7	242.4	138.6	140.4	128.5
1979 O	152.0	117.0	149.9	187.2	128.7	129.7	128.4	174.8		152.4	179.3	212.6	249.5	139.8	141.4	130.1
1979 N	153.2	117.4	150.8	189.8	128.9	130.3	129.2	176.3	172.5	153.9	182.6	213.0	252.4	141.1	142.8	129.6
1979 D	154.6	117.9	152.0	193.2	129.2	130.7	129.7	177.6		154.2	188.5	216.1	256.0	142.6	143.7	130.4
1980 J	157.7	118.6	154.9	199.4	130.0	132.6	130.4	182.0		155.5	194.0	222.1	255.2	144.6	144.5	131.6
1980 F	159.7	120.0	156.6	202.8	131.3	133.6	131.5	184.6	178.9	157.1	194.4	224.1	260.3	146.6	145.7	132.8
1980 M	161.4	120.6	158.4	204.9	132.5	133.8	132.0	187.1		159.3	200.5	225.3	263.9	148.7	147.3	133.9
1980 A	164.2	121.2	160.2	208.2	134.2	134.0	132.8	193.5		160.5	206.6	227.5	265.7	150.4	148.2	136.2
1980 M	165.6	121.7	161.7	210.4	134.6	134.4	133.6	195.3	192.2	162.7	209.1	229.0	265.3	151.9	149.9	137.4
1980 J	166.7	122.2	162.6	212.3	134.5	134.7	133.9	197.1		163.1	214.5	232.6	268.4	153.6	151.6	137.8
1980 J	168.5	122.3	165.2	216.0	135.3	136.3	134.5	198.7		166.1	213.1	235.8	271.1	153.7	152.7	138.0
1980 A	169.4	122.4	166.7	218.6	135.8	136.6	134.9	199.2	197.8	166.7	211.1	238.7	273.8	154.7	154.2	137.6
1980 S	171.0	122.4	168.3	223.0	136.8	137.5	135.0	200.4		167.6	217.1	241.1	274.3	156.1	155.5	140.1
1980 O	172.7	122.7	170.1	226.8	137.5	138.8	136.1	201.7		168.7	222.8	243.1	277.1	157.5	156.9	140.4
1980 H	174.6	123.6	171.3	231.5	138.0	140.2	137.3	203.3	203.9	170.3	230.5	245.6	278.9	158.9	158.8	140.6
1980 D	176.1	124.4	172.8	234.4	138.2	140.6	138.8	204.5		171.0	237.9	249.0	287.0	160.3	159.8	140.1
1981 J	178.1	125.7	174.7	238.7	139.0	141.8	139.9	205.7		172.1	243.7	254.1	295.2	161.6	161.8	141.5
1981 F	180.1	126.5	176.4	243.3	139.8	143.1	140.7	207.6	216.5	173.9	246.0	255.4	299.5	163.2	163.5	141.3
1981 M	182.3	127.4	178.2	246.8	141.1	144.0	141.7	210.7		177.3	251.9	260.4	303.4	164.4	165.6	142.0
1981 A	185.2	128.3	180.6	250.1	142.6	143.9	142.6	216.8		179.4	256.9	263.0	311.8	165.5	166.9	143.1
1981 M	186.8	128.8	182.2	254.1	143.3	143.8	143.7	218.2	225.0	182.3	260.0	264.3	313.6	166.8	168.4	144.3
1981 J	188.2	129.3	184.0	256.9	143.4	144.6	145.2	219.4		184.1	264.6	264.5	315.7	168.3	171.0	144.5
1981 J	189.8	130.1	187.1	258.4	144.4	146.9	145.9	220.4		185.3	263.1	269.7	324.8	170.2	172.5	144.1
1981 A	191.2	130.6	189.5	260.8	145.0	147.7	146.4	222.0	237.6	186.1	261.1	273.0	333.6	171.5	173.7	143.2
1981 S	193.2	131.3	191.7	264.6	146.7	149.0	147.7	223.3		187.7	272.3	275.1	339.2	173.2	175.0	145.6
1981 O	195.4	131.7	194.0	269.2	147.9	149.6	148.1	225.3		188.7	279.4	278.2	345.3	173.6	176.8	146.1
1981 H	197.6	132.3	195.8	274.0	148.3	151.1	149.0	227.7	251.5	191.0	285.4	280.7	349.6	174.1	178.3	145.7
1981 D	198.9	132.8	196.9	276.8	148.3	152.1	150.0	229.1		191.9	291.5	284.9	358.7	174.6	179.1	146.1
1982 J	200.8	133.8	198.9	280.8	149.0	153.5	152.0	230.4		193.3	294.7	290.8	365.1	175.2	180.3	146.1
1982 F	202.1	134.2	201.0	284.9	149.7	153.9	153.5	230.5	257.4	194.4	294.1	324.8	375.8	175.8	182.5	145.7
1982 M	203.8	134.2	203.3	287.3	151.1	154.1	153.6	232.5		196.1	303.7	295.8	385.5	175.6	184.8	146.0
1982 A	206.3	134.5	205.8	289.7	152.1	156.0	154.1	237.2		197.3	312.8	299.8	393.0	176.3	185.8	147.1
1982 M	208.0	135.5	207.4	293.0	152.4	157.4	156.3	238.9	272.3	199.4	316.9	304.2	393.3	178.1	188.3	147.6
1982 J	209.6	136.9	208.8	296.1	152.7	158.8	158.1	239.5		201.0	325.1	307.1	397.3	180.2	190.2	147.6
1982 J	210.6	137.2	209.4	299.8	153.1	160.0	159.7	239.6		202.7	323.3	311.0	396.9	181.2	191.2	146.5
1982 A	211.7	137.1	210.1	305.3	153.3	161.0	160.6	239.7	278.0	204.0	319.0	313.2	404.0	181.6	192.1	147.5
1982 S	213.2	137.5	211.1	309.9	154.4	163.0	161.8	239.6		206.3	327.5	313.6	409.5	181.9	193.1	150.2
1982 O	215.0	138.2	212.1	315.1	155.1	164.3	163.5	240.7		208.7	335.2	316.8	412.2	182.4	194.4	150.7
1982 H	216.8	138.6	214.2	319.5	155.0	164.5	165.0	241.9	282.4	210.3	342.1	317.7	415.7	182.1	195.7	149.0
1982 D	217.6	138.9	216.0	321.5	154.7	164.4	165.6	241.4		209.2	347.1	324.9	426.4	181.4	195.7	148.7

METHODOLOGICAL NOTES

1. The consumer price indices presented here are national indices which may appear under different titles in some of the countries. The development of the general index published by EUROSTAT is equivalent to that published by the country.
2. The components of this general index correspond to groupings of the national indices aggregated according to a harmonized classification of the ESA (European System of Integrated Economic Accounts). The price development of these components is equal to the price development of the national indices for the same components of the classification.
3. The scope of the general index differs according to each country. This can be due to population differences (specific income classes, certain socio-occupational categories, or all households), differences in geographic zones (capital, urban areas, rural areas), or differences in the concepts of expenditure on rent, health, etc.. Finally methods of seasonal correction differ from country to country.
4. A fixed base system is used in some countries, while others use a chain system (variable weights). Base years may also differ between countries. For better comparison EUROSTAT has taken 1975 as the base year for all countries.
5. The EUR 10 indices are obtained from the arithmetic average of the national indices weighted by the relative share of each country in real values, as obtained for final household consumption in real values of the aggregates for 1975 (1975 has been derived from the new 1980 results).

NOTE METHODOLOGIQUE

1. Les indices de prix à la consommation présentée ici sont les indices nationaux. Ces indices portent des noms différents dans les différents pays. L'indice général publié par l'EUROSTAT correspond toujours, en évolution, à l'indice général publié par le pays.
2. Les composantes de cet indice général correspondent à des regroupements des indices nationaux agrégés selon une classification harmonisée conforme au SEC (Système européen des Comptes nationaux). Les évolutions de prix correspondent pour ces regroupements aux évolutions constatées par les indices nationaux pour le même champ de classification.
3. Le champ couvert par l'indice général est différent selon les pays, aussi bien concernant la population concernée (tranche de revenu spécifique, certaines catégories socio-professionnelles ou l'ensemble des ménages) que en ce qui concerne les zones géographiques concernées (capitale, zones urbaines, ensemble du pays, etc.) ou encore concernant les concepts de dépense pour les loyers, la santé, etc.. Enfin les traitements statistiques concernant les corrections des variations saisonnières sont aussi différents selon les pays.
4. Un système de base fixe est utilisé dans certains pays, dans d'autres un système en chaîne est mis en œuvre (pondérations variables). Les années de référence utilisées au niveau national pour présenter les indices, sont différentes selon les pays. Pour faciliter la comparaison l'EUROSTAT a choisi l'année 1975 comme année commune pour la présentation de ces indices.
5. Les indices EUR 10 sont obtenus comme moyenne arithmétique des indices nationaux pondérés par les parts relatives des différents pays en valeurs réelles, telles qu'elles ont été obtenues pour la consommation finale des ménages et ses composantes, lors de la comparaison en valeurs réelles des agrégats du SEC-1975 (1975 a été dérivé des nouveaux résultats pour 1980).

