

HILLMAN

COMMISSION OF THE EUROPEAN COMMUNITIES

COM(80) 646 final

Brussels, 3rd November 1980

UNIVERSITY OF PITTSBURGH
LIBRARIES

FEB 2 1981

INT & EXCHANGE

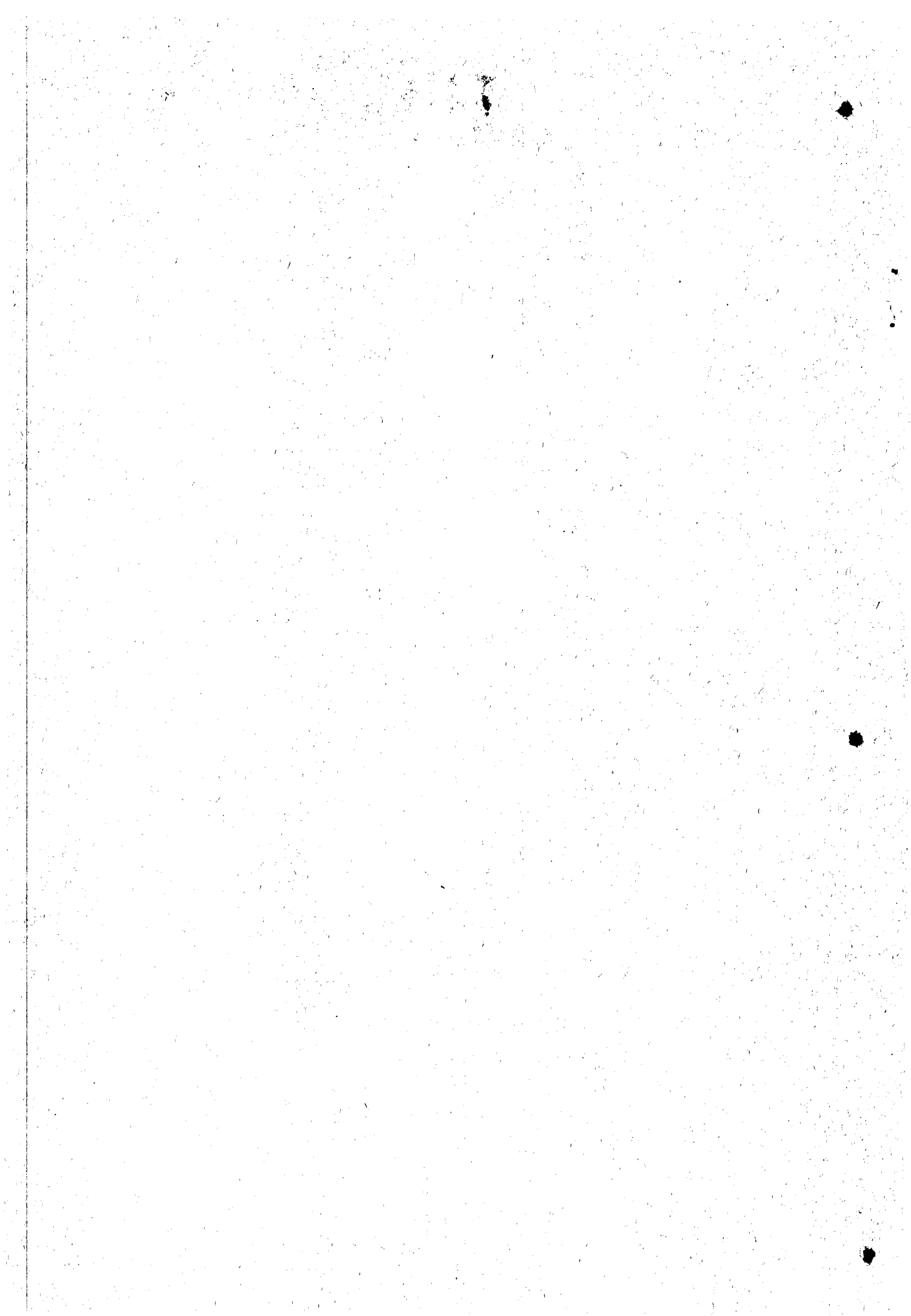
UNIVERSITY OF PITTSBURGH
LIBRARIES

FEB 25 1981

SERIALS UNIT

DRAFT COUNCIL REGULATION (EEC)
ON THE OPENING, ALLOCATING AND ADMINISTRATING OF A COMMUNITY
TARIFF QUOTA FOR ROSIN, INCLUDING "BRAIS RESINEUX", FALLING
WITHIN SUBHEADING 38.08 A OF THE COMMON CUSTOMS TARIFF (1981)

(presented by the Commission to the Council)



EXPLANATORY MEMORANDUM

1. The purpose of this memorandum is to submit to the Council a draft Regulation on the opening, allocation and administration of an autonomous duty free Community tariff quota for rosins falling within sub-heading 38.08 A of the CCT for 1981 which corresponds to 25% of the Community's imports of these products from third countries not associated with or linked to it by a preferential agreement during the last year for which statistics are available.
2. Those imports in 1979 amounted to 79 834.3 tonnes, so the Community tariff quota must be fixed at an amount of 19 959 tonnes for 1981.
3. Since the Community tariff quota in question is relatively small and will undoubtedly be used up quickly in the Member States it does not seem that an allocation of it in shares among the Member States would derogate from the Community nature thereof. Such a solution has previously been adopted in cases of this nature.

DRAFT
COUNCIL REGULATION (EEC)

on the opening, allocating and administration of a Community tariff quota for rosin, including "brais résineux", falling within subheading 38.08 A of the Common Customs Tariff (1981).

THE COUNCIL OF THE EUROPEAN COMMUNITIES,

Having regard to the Treaty establishing the European Economic Community, and in particular Article 28 thereof,

Having regard to the draft Regulation submitted by the Commission,

Whereas the production in the Community of rosin falling within subheading 38.08 A of the Common Customs Tariff is currently insufficient to meet the requirements of the processing industries in the Community; whereas, consequently, Community supplies of products of this type currently depend to a considerable extent on imports from third countries; whereas the most urgent Community requirements for the products in question should be met immediately on the most favourable terms; whereas a nil duty Community tariff quota should therefore be opened within the limits of an appropriate amount corresponding to 25% of the Community's imports from third countries not associated with or linked to it by a preferential agreement during the last year for which statistics are available;

Whereas, in 1979, the imports of rosin from third countries not associated with or linked to the Community by a preferential agreement were as follows:

(in tonnes)

Benelux	13 953
Denmark	123
Germany	26 802.6
Greece	0
France	8 835
Ireland	2 500
Italy	8 836.7
United Kingdom	18 784
Total	<u>79 834.3</u>

Whereas 25% of this total represents 19 959 tonnes;

Whereas, in view of the negligible size of such a quota in comparison with the Community's requirements, a system of utilization should, without derogating from the Community nature of the tariff quota, be provided, based on a single allocation between the Member States; whereas this allocation should be calculated by the same method as is used to establish a total quota of 25% of the imports of each Member State from the same third countries; whereas, in order to safeguard the Community nature of the quota, a share should be allocated to Greece by levying the same percentage on the share allocated to each of the other Member States; whereas, calculated in such a manner, this allocation should be as set out in Article 2;

Whereas, since the Kingdom of Belgium, the Kingdom of the Netherlands and the Grand Duchy of Luxembourg are united within and jointly represented by the Benelux Economic Union, any measure concerning the administration of the shares allocated to that economic union may be carried out by any one of its members,

HAS ADOPTED THIS REGULATION:

Article 1

1. During the period 1 January to 31 December 1981 the Common Customs Tariff duty for rosin including 'brais résineux' falling within sub-heading 38.08 A shall be totally suspended within the limits of a Community tariff quota of 19 959 tonnes.

2. Within the limits of this tariff quota, Greece shall apply duties calculated in accordance with the relevant provisions laid down in the Act of Accession of that country (1).

(1) OJ No. L 291, 19.11.1979, p.17

Article 2

The Community tariff quota referred to in Article 1 shall be allocated as follows among the Member States: (in tonnes)

Benelux	3 487
Denmark	30
Germany	6 700
Greece	7
France	2 208
Ireland	624
Italy	2 208
United Kingdom	4 695

Article 3

1.

1. Member States shall take all appropriate measures to ensure that importers of the product in question established in their territory have free access to the shares allocated to them.

2. The extent to which a Member State has used up its share shall be determined on the basis of the imports of the product in question entered with the customs authorities for home use.

Article 4

At the Commission's request, Member States shall inform it of the imports actually charged against their shares.

Article 5

Member States and the Commission shall cooperate closely to ensure that this Regulation is complied with.

Article 6

This Regulation shall enter into force on 1 January 1981.

This Regulation shall be binding in its entirety and directly applicable in all Member States.

Done at Brussels,

For the Council
The President,