

COMMISSION OF THE EUROPEAN COMMUNITIES

COM(76) 33 final
Brussels, 30 January 1976

*Small text
last page*

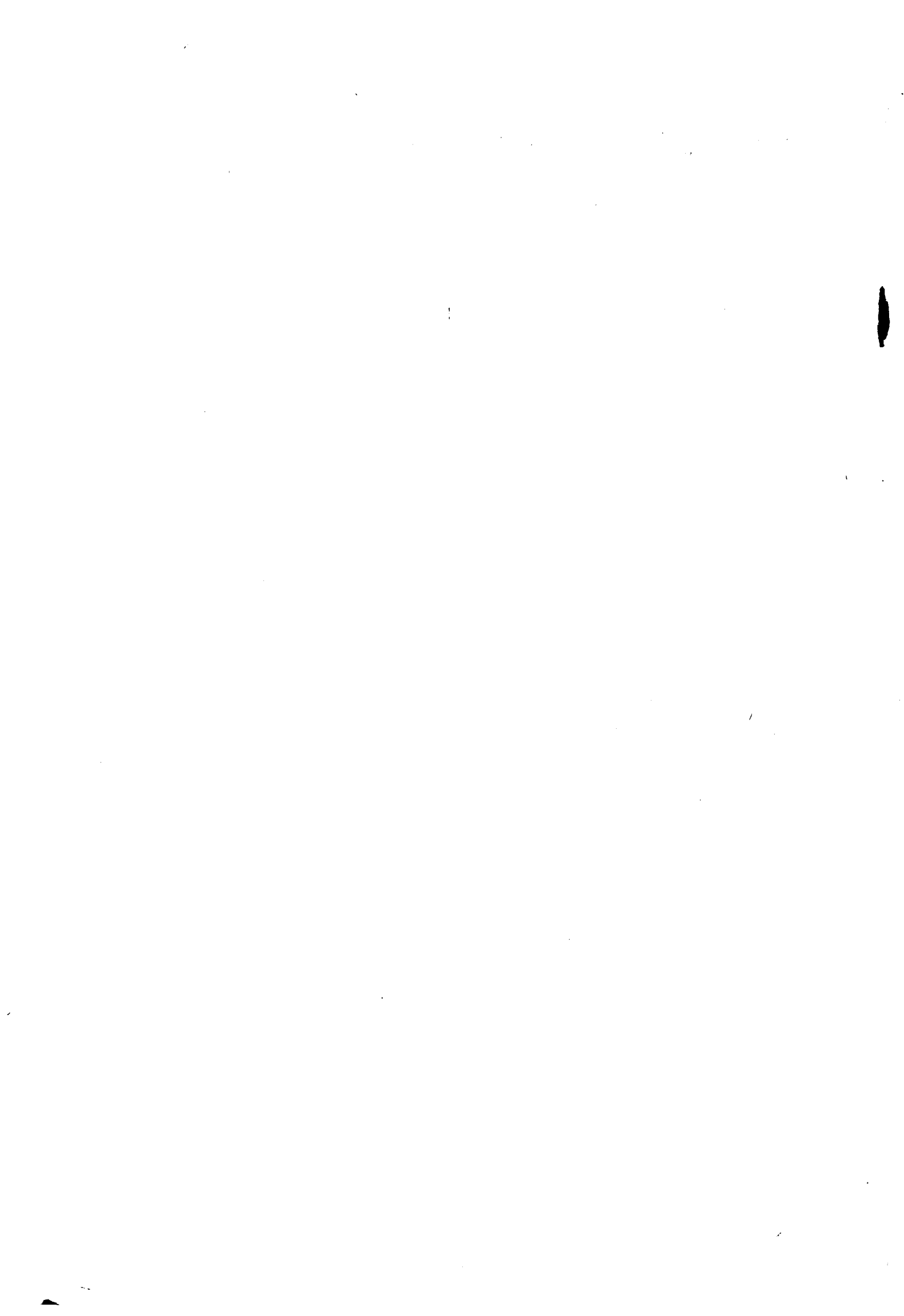
HILLMAN

Recommendation for

REGULATION (EEC) OF THE COUNCIL

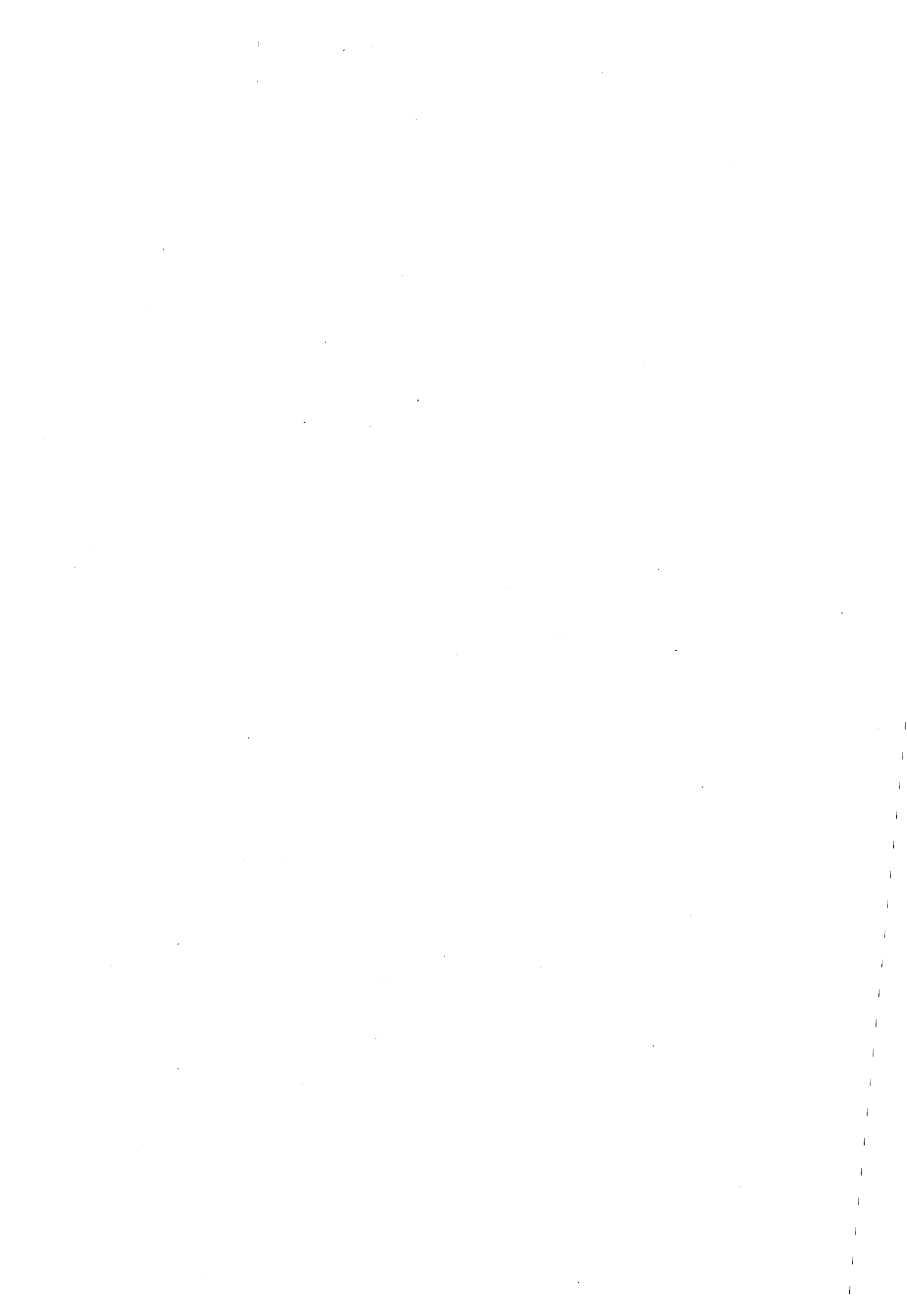
concluding the Agreement relating to
Article 2 of Protocol 8 to the Agreement
between the European Economic Community
and the Portuguese Republic

(submitted to the Council by the Commission)



Commission's communication to the Council

The Commission recommends that the Council adopt the exchange of letters concerning sardines in order to ensure that Portugal respects, as in previous years, a minimum price for importation into the Community.



REGULATION (EEC) No. /76 OF THE COUNCIL

OF

concluding the Agreement relating to
Article 2 of Protocol 8 to the
Agreement between the
European Economic Community and the
Portuguese Republic

THE COUNCIL OF THE EUROPEAN COMMUNITIES,

Having regard to the Treaty establishing the European Economic
Community, and in particular Article 113 thereof;

Having regard to the recommendation from the Commission;

.../...

Whereas the provisions of the exchange of letters of 20 December 1972 relating to Article 2 of Protocol 8 to the Agreement between the European Economic Community and the Portuguese Republic should be extended and the Agreement in the form of exchanges of letters negotiated to this effect which will be signed on _____ should be concluded,

HAS ADOPTED THIS REGULATION:

Article 1

The Agreement in the form of exchanges of letters relating to Article 2 of Protocol 8 to the Agreement between the European Economic Community and the Portuguese Republic are hereby concluded on behalf of the Community.

The texts of these Agreements are annexed to this Regulation.

Article 2

The President of the Council is hereby authorized to designate the person empowered to sign the Agreements referred to in Article 1 above and to confer on him the powers necessary to bind the Community.

Article 3

This Regulation shall enter into force on the day following that of its publication in the Official Journal of the European Communities.

.../...

This Regulation shall be binding in its entirety and directly applicable in all Member States.

Done at

For the Council
The President

AGREEMENT
RELATING TO ARTICLE 2 OF PROTOCOL 8
TO THE AGREEMENT BETWEEN THE
EUROPEAN ECONOMIC COMMUNITY AND THE
PORTUGUESE REPUBLIC

LETTER NO. 1

Brussels,

Sir,

Pursuant to Article 2 of Protocol 8 to the Agreement between the European Economic Community and the Portuguese Republic signed on 22 July 1972, I hereby inform you that Portugal agrees to the extension to 30 June 1977 of the detailed arrangements contained in the exchange of letters of 20 December 1972 between Portugal and the Community relating to the conditions in accordance with which prepared and preserved sardines falling within subheading 16.04 D of the Common Customs Tariff are imported into the Community.

The Government of Portugal undertakes, moreover, to ensure that the prices charged for imports into the Community from 1 February 1976 shall not be less than the prices set out in the Annex hereto, and also to prevent any deflection of trade.

Please accept, Sir, the assurance of my highest consideration.

For the Government of Portugal

ANNEX

Trade Specification	Size		Net weight	Semi-gross-weight less packaging	Capacity	Coefficients	Minimum prices customs duties included u.a. per carton of 100 tins				
	Total height mm.	ounces					Community			United Kingdom and Denmark	
							in olive oil	in another sauce	in olive oil	in another sauce	
<i>Rectangular bottom.</i>											
1/10 club	20	2	56	95	53	0.60	11.10	10.20	10.66	9.79	
1/8 club	25	2 3/4	80	120	75	0.70	12.95	11.90	12.43	11.42	
1/4 reduced	18	2 5/8	74	130	73	0.77	14.25	13.09	13.68	12.56	
1/8 club	30	3 1/4	90	140	93	0.80	14.80	13.60	14.21	13.06	
1/4 special	25	3 1/6	90	140	90	0.85	15.73	14.45	15.10	13.87	
1/8 low plat	24	3 3/8	95	145	96	0.90	16.65	15.30	15.98	14.69	
1/4 club	30	4 3/8	125	190	125						
1/8 P 25				176	125	1.00	18.50	17.00	17.76	16.32	
1/4 usual	22	3 3/4	105	188	130						
1/8 (club 30)				180	106						
1/4 usual	24	4 3/8	125	195	125	1.10	20.35	18.70	19.54	17.95	
1/4 usual	30	5 1/4	150	240	169						
1/4 club	40	6 1/4	175	250	178	1.30	24.05	22.10	23.09	21.22	
1/4 P 30				250	187						
1/4 American	30	7	200	300	207	1.60	29.60	27.20	28.42	26.11	
1/4 usual	40	9 1/4	260	326	250						
1/8 P				337	250	1.80	33.30	30.60	31.97	29.38	
1/4 club long	40	8 3/4	248	320	241						
1/2 low	30	9 1/4	260	370	245	2.20	40.70	37.40	39.07	35.90	
1/4 usual long	40	11 1/2	325	423	313	2.50	46.25	42.50	44.40	40.80	
1/4 usual	48	11	310	390	297	2.60	48.10	44.20	46.18	42.43	
1/2 large	40	11 1/2	325	460	330	2.70	49.95	45.90	47.95	44.06	
1/2 P				476	375						
1/1				902	750	4.65	86.03	79.05	82.58	75.89	
1/4	80	27 1/2	780	950	771						
<i>Oval bottom</i>											
1/2 oval	40	15	425	555	452	3.40	62.90	57.80	60.38	55.49	

LETTER NO. 2

Brussels,

Sir,

I hereby acknowledge receipt of your letter of today's date worded as follows:

"Pursuant to Article 2 of Protocol 8 to the Agreement between the European Economic Community and the Portuguese Republic signed on 22 July 1972, I hereby inform you that Portugal agrees to the extension to 30 June 1977 of the detailed arrangements contained in the exchange of letters of 20 December 1972 between Portugal and the Community relating to the conditions in accordance with which prepared and preserved sardines falling within subheading 16.04 D of the Common Customs Tariff are imported into the Community.

The Government of Portugal undertakes, moreover, to ensure that the prices charged for imports into the Community from 1 February 1976 shall not be less than the prices set out in the Annex hereto, and also to prevent any deflection of trade."

Please accept, Sir, the assurance of my highest consideration.

For the Council
of the European Communities

ANNEX

Size		Net weight		Semi-gross-weight less packaging	Capacity	Coefficients	Minimum prices customs duties included u.a. per carton of 100 tins			
Trade Specification	Total height mm	ounces	g	g	cubic cm		Community		United Kingdom and Denmark	
							in olive oil	in another sauce	in olive oil	in another sauce
<i>Rectangular bottom.</i>										
1/10 club	20	2	56	95	53	0.60	11.10	10.20	10.66	9.79
1/8 club	25	2 3/4	80	120	75	0.70	12.95	11.90	12.43	11.42
1/4 reduced	18	2 5/8	74	110	73	0.77	14.25	13.09	13.68	12.56
1/8 club	30	3 1/4	90	140	93	0.80	14.80	13.60	14.21	13.06
1/1 special	25	3 1/6	90	140	90	0.85	15.73	14.45	15.10	13.87
1/8 low plat	24	3 3/8	95	145	96	0.90	16.65	15.30	15.98	14.69
1/1 club	30	4 3/8	125	180	125	1.00	18.50	17.00	17.76	16.32
1/8 P 25				176	125					
1/4 usual	22	3 3/4	105	180	106	1.10	20.35	18.70	19.54	17.95
1/8 (club 30)				188	130					
1/4 usual	24	4 3/8	125	195	125	1.30	24.05	22.10	23.09	21.22
1/4 usual	30	5 1/4	150	210	169					
1/4 club	40	6 1/4	175	250	178	1.60	29.60	27.20	28.42	26.11
1/4 P 30				250	187					
1/4 American	30	7	200	280	207	1.80	33.30	30.60	31.97	29.38
1/4 usual	40	9 1/4	260	325	250					
1/3 P				337	250	2.20	40.70	37.40	39.07	35.90
1/1 club long	40	8 3/4	240	320	241					
1/2 low	30	9 1/4	280	370	245	2.50	46.25	42.50	44.40	40.80
1/1 usual long	40	11 1/2	325	423	313					
1/1 usual	48	11	310	390	297	2.60	48.10	44.20	46.18	42.43
1/2 large	40	11 1/2	325	460	330					
1/2 P				476	375	2.70	49.95	45.90	47.95	44.06
1/1				902	750					
1/1	80	27 1/2	780	950	771	4.65	86.03	79.05	82.58	75.89
<i>Oval bottom</i>										
1/2 oval	40	15	425	555	452	3.40	62.90	57.80	60.38	55.49