



**PRESSE-MEDELSE - MITTEILUNG AN DIE PRESSE - PRESS-RELEASE - INFORMATION A LA PRESSE  
ΑΝΑΚΟΙΝΩΣΗ ΓΙΑ ΤΟΝ ΤΥΠΟ - INFORMAZIONE ALLA STAMPA - MEDEDELING AAN DE PERS**

Brussels, 3rd May, 1984.

COMMISSION OIL BULLETIN NO. 241

4417.411

The weekly oil bulletin, published by the Commission, gives the latest available data relating to price development in the Member States and for the Community as a whole. The Commission considers that the bulletin contributes to improved transparency as regards Community oil markets.

The figures given in each bulletin follow the development over time of certain prices. They permit a comparison at any instant in time between Member States but such a comparison may not be representative of international price relationships over a longer period. Moreover, it is evident that such a comparison is limited even if fluctuations in exchange rates are ignored; although valid for identical products sold to the same categories of consumer no account is taken of market structures, (the product categories reported are not in every case representative of the bulk of sales for each product in each country), quality specifications and methods of distribution which are unique to each Member State. In this context the essentially indicative nature of some elements of table 2 is emphasised.

A detailed methodology will be appended to the bulletin published at the beginning of each quarter.

The Commission Oil Bulletin is freely available on demand (telephone 235.35.75).

Weekly summary :

Evolution (in %) of Community indications for :

1<sup>o</sup>) Weighted average pre-tax prices  
for principal oil products at 16.4.1984 (Table 2)

compared with 15.12.1978

+71%

compared with previous week

-1,30%

2<sup>o</sup>) Weighted average CIF cost of crude  
oil supplies for December 1983 (Table 3)

compared with 15.12.1978

+112,10%

(1) The CIF supply cost is derived from monthly declarations by Member States (see Oil Bulletin 207 for methodology).

Niveaux indicatifs hebdomadaires des prix hors taxes à la consommation en monnaies nationales  
Weekly indicative consumer price levels in national currencies. Tax and duties excluded (1)

(Tableau hebdomadaire)

Prix au : 16.4.1984  
Prices as at : 16.4.1984

TABEAU 1  
TABLE

	Essence super Premium gasoline 1000 L (2)	Essence normale Regular gasoline 1000 L (2)	Gasoil moteur Automotive gasoil 1000 L (2)	Gasoil chauffage Heating gasoil 1000 L (3)	Fuel Residuel HTS Residual Fuel Oil HSC Tonne (4)
Belgique (FB)*	15.440	14.800	14.550	13.162	11.108
Danmark (DK)	2.700	2.585	2.715	2.485	1.965
Deutschland (DM)	679	624	700	638	531
Ellas (DR)	30.988	28.988	20.193	20.193	15.492
France (FF)	2.141,00	2.002,70	2.179,80	2.079,80	1.619
Irlande (Irish £)	262,77	258,21	278,39	226,37	175,51
Italia (Lire)	434.130	392.460	443.650	423.848	323.748
Luxembourg (FL)	14.510	13.740	14.370	13.760	10.592
Nederland (Fl)	781	754	798	735	610
United Kingdom (£)	180,30	170,80	187,00	206,10	143,00

(1) Prix le plus souvent pratiqués et ainsi représentatifs, selon les meilleures estimations des experts des Etats Membres, du marché pétrolier de chaque Etat Membre.  
Prices most frequently changed and thus representative, of the oil market in each Member State, according to the best estimates of the national experts.

(2) Prix à la pompe/Pump price.

(3) Prix pour livraison de 2.000 à 5.000 litres/Prices for deliveries of 2,000 to 5,000 litres.

(4) Prix pour livraisons inférieures à 2000 tonnes par mois ou inférieures à 24.000 tonnes par an. Prix franco consommateurs.  
Prices for offtakes of less than 2,000 tons per month or less than 24,000 tons per year. Delivered Consumer Prices.

\* Prix maximaux/Maximum prices.

Niveaux indicatifs hebdomadaires des prix hors taxes à la consommation en dollars courants  
Weekly indicative consumer price levels in current dollars. Tax and duties excluded (1)

(Tableau hebdomadaire)

Prix au : 16.4.1984  
Prices as at : 16.4.1984

TABEAU 2  
TABLE

	Essence super Premium gasoline 1000 L (2)	Essence normale Regular gasoline 1000 L (2)	Gasoil moteur automotive gasoil 1000 L (2)	Gasoil chauffage Heating gasoil 1000 L (3)	Fuel Residuel HTS Residual Fuel Oil HSC Tonne (4)
Belgique *	286,52	274,64	270,00	244,24	206,09
Danmark	279,02	267,14	280,57	256,80	203,06
Deutschland	257,63	236,76	265,60	242,07	201,47
Ellas	296,36	277,23	193,12	193,12	148,16
France	263,86	246,82	268,64	256,32	199,53
Irlande	305,47	300,17	323,63	263,15	204,03
Italia	266,25	240,69	272,09	259,94	198,55
Luxembourg	269,26	254,97	266,66	255,34	196,55
Nederland	262,58	253,50	268,29	247,11	205,09
United Kingdom	256,80	243,27	266,34	293,54	203,67
C.E.E./E.E.C.					
a) Moyenne/Average (5)	263,47	242,47	267,75	253,63	198,89
b) Variation moyenne % Average variation % 16.4.84 /15.12.78	+37%	+32%	+54%	+75%	+109%
c) Variation moyenne sur les 5 produits Average variation for all 5 products 16.4.84 /15.12.78	+71%				

(1) Prix les plus souvent pratiqués et ainsi représentatifs, selon les meilleures estimations des experts des Etats Membres, du marché pétrolier de chaque Etat Membre.  
Prices most frequently charged and thus representative of the oil market in each Member State, according to the best estimates of the national experts.

(2) Prix à la pompe/ Pump price

(3) Prix pour livraison de 2.000 à 5.000 litres./ Prices for deliveries of 2,000 to 5,000 litres.

(4) Prix pour livraison inférieure à 2000 tonnes par mois ou inférieure à 24.000 tonnes par an. Prix franco consommateurs.  
Prices for offtakes of less than 2,000 tons per month or less than 24,000 tons per year. Delivered Consumer Prices.

(5) La moyenne résulte d'une pondération des quantités consommées de chaque produit concerné au cours de l'année 1982  
The result of weighting the prices of the products concerned by the quantities consumed during the period 1982

Prix maximaux/Maximum prices.

TABEAU 3  
TABLE

Coût CAF d'approvisionnement en brut de la Communauté.  
CIF Cost of Community crude oil supplies.

	S/B	S/T
Prix au Price as at 15.12.78	13,87	107,76
Prix au mois de décembre 1983 Price as at December 1983	29,42	+217,41
Evolution (%) 16.4.84 /15.12.78	+112,10%	

**PRESSE-MEDDELELSE • MITTEILUNG AN DIE PRESSE • PRESS-RELEASE • INFORMATION A LA PRESSE  
ΑΝΑΚΟΙΝΩΣΗ ΓΙΑ ΤΟΝ ΤΥΠΟ • INFORMAZIONE ALLA STAMPA • MEDEDELING AAN DE PERS**

Brussels, 10TH May, 1984.

COMMISSION OIL BULLETIN NO.242

4417.411

The weekly oil bulletin, published by the Commission, gives the latest available data relating to price development in the Member States and for the Community as a whole. The Commission considers that the bulletin contributes to improved transparency as regards Community oil markets.

The figures given in each bulletin follow the development over time of certain prices. They permit a comparison at any instant in time between Member States but such a comparison may not be representative of international price relationships over a longer period. Moreover, it is evident that such a comparison is limited even if fluctuations in exchange rates are ignored; although valid for identical products sold to the same categories of consumer, no account is taken of market structures, (the product categories reported are not in every case representative of the bulk of sales for each product in each country), quality specifications and methods of distribution which are unique to each Member State. In this context the essentially indicative nature of some elements of table 2 is emphasised.

A detailed methodology will be appended to the bulletin published at the beginning of each quarter.

The Commission Oil Bulletin is freely available on demand (telephone 235.35.75).

Weekly summary :

Evolution (in %) of Community indications for :

1<sup>o</sup>) Weighted average pre-tax prices  
for principal oil products at 2.5.1984 (Table 2)

compared with 15.12.1978

+65%

compared with previous week

-3,10%

2<sup>o</sup>) Weighted average CIF cost of crude  
oil supplies for January 1984 (Table 3)

compared with 15.12.1978

+111,50%

(1) The CIF supply cost is derived from monthly declarations by Member States (see Oil Bulletin 207 for methodology).

Niveaux indicatifs hebdomadaires des prix hors taxes à la consommation en monnaies nationales  
Weekly indicative consumer price levels in national currencies. Tax and duties excluded (1)

(Tableau hebdomadaire)

Prix au : 2.5.1984  
Prices as at : 2.5.1984

TABLEAU 1  
TABLE

	Essence super Premium gasoline 1000 L (2)	Essence normale Regular gasoline 1000 L (2)	Gasol moteur Automotive gasoil 1000 L (2)	Gasol chauffage Heating gasoil 1000 L (3)	Fuel Residuel HTS Residual Fuel Oil Hs Tonne (4)
Belgique (FB)*	15.440	14.800	14.374	12.983	10.856
Danmark (DK)	2.700	2.585	2.715	2.485	1.855
Deutschland (DM)	687	632	710	625	519
Ellas (DR)	30.988	28.988	20.193	20.193	15.492
France (FF)	2.141,00	2.002,70	2.179,80	2.079,80	1.619
Ireland (Irish £)	262,77	258,21	278,39	226,37	175,51
Italia (Lire)	434.130	392.460	443.650	421.466	323.786
Luxembourg (FL)	14.510	13.740	14.370	13.760	10.592
Nederland (FL)	781	754	798	735	601
United Kingdom (£)	182,70	173,10	190,00	206,10	143,00

(1) Prix le plus souvent pratiqués et ainsi représentatifs, selon les meilleures estimations des experts des Etats Membres, du marché pétrolier de chaque Etat Membre.  
Prices most frequently changed and thus representative, of the oil market in each Member State, according to the best estimates of the national experts.

(2) Prix à la pompe/Pump price.

(3) Prix pour livraison de 2.000 à 5.000 litres/Prices for deliveries of 2,000 to 5,000 litres.

(4) Prix pour livraisons inférieures à 2000 tonnes par mois ou inférieures à 24.000 tonnes par an. Prix franco consommateurs.  
Prices for offtakes of less than 2,000 tons per month or less than 24,000 tons per year. Delivered Consumer Prices.

\* Prix maximaux/Maximum prices.

Niveaux indicatifs hebdomadaires des prix hors taxes à la consommation en dollars courants  
Weekly indicative consumer price levels in current dollars. Tax and duties excluded (1)

(Tableau hebdomadaire)

Prix au : 2.5.1984  
Prices as at : 2.5.1984

TABLEAU 2  
TABLE

	Essence super Premium gasoline 1000 L (2)	Essence normale Regular gasoline 1000 L (2)	Gasol moteur automotive gasoil 1000 L (2)	Gasol chauffage Heating gasoil 1000 L (3)	Fuel Residuel HTS Residual Fuel Oil HSC Tonne (4)
Belgique *	277,62	266,11	258,45	233,44	195,19
Danmark	269,90	258,40	271,40	248,41	185,43
Deutschland	251,64	231,50	260,07	228,93	190,10
Ellas	288,60	269,98	188,06	188,06	144,28
France	255,48	238,98	260,11	248,18	193,19
Ireland	294,98	289,86	312,51	254,11	197,02
Italia	257,22	232,53	262,86	249,72	191,84
Luxembourg	260,90	247,05	258,38	247,41	190,45
Nederland	253,94	245,16	259,47	238,98	195,41
United Kingdom	255,41	241,99	265,62	288,13	199,91
C.E.E./E.E.C.					
a) Moyenne/Average (5)	257,17	237,03	260,71	243,63	191,46
b) Variation moyenne % Average variation % 2.5.84 /15.12.78	+33%	+29%	+50%	+68%	+101%
c) Variation moyenne sur les 5 produits Average variation for all 5 products 2.5.84 /15.12.78			+65%		

(1) Prix les plus souvent pratiqués et ainsi représentatifs, selon les meilleures estimations des experts des Etats Membres, du marché pétrolier de chaque Etat Membre.  
Prices most frequently charged and thus representative of the oil market in each Member State, according to the best estimates of the national experts.

(2) Prix à la pompe/ Pump price

(3) Prix pour livraison de 2.000 à 5.000 litres./ Prices for deliveries of 2,000 to 5,000 litres.

(4) Prix pour livraison inférieure à 2000 tonnes par mois ou inférieure à 24.000 tonnes par an. Prix franco consommateurs.  
Prices for offtakes of less than 2,000 tons per month or less than 24,000 tons per year. Delivered Consumer Prices.

(5) La moyenne résulte d'une pondération des quantités consommées de chaque produit concerné au cours de l'année 1982.  
The result of weighting the prices of the products concerned by the quantities consumed during the period 1982.

\* Prix maximaux/Maximum prices.

TABLEAU 3  
TABLE

Coût CAF d'approvisionnement en brut de la Communauté.  
CIF Cost of Community crude oil supplies.

Prix au Price as at	15.12.78	S/B 13,87	S/T 107,76
Prix au janvier 1984 Price as at January 1984		29,33	+217,63
Evolution (%) 2.5.1984/15.12.78		111,50%	

Prix de vente des produits pétroliers en monnaies nationales  
Selling Prices of Petroleum Products in National currencies.

(Tableau mensuel)

Prix moyens pratiqués au  
Average of prices ruling as at 15.2.1984

TABLEAU 4  
TABLE

	Essence super Premium Gasoline 1000 L (1)			Essence Normale Regular Gasoline 1000 L (1)			Gasoil Moteur Automotive Gasoil 1000 L (1)		
	Taxes	Hors taxes Without Taxes	Prix de vente Selling Price	Taxes	Hors taxes Without Taxes	Prix de vente Selling Price	Taxes	Hors taxes Without taxes	Prix de ven Selling Pri
Belgique (FB)	17.340	13.360	30.700	17.140	12.560	29.700	10.218	14.622	24.840
Danmark (KD)	3.359,59	2.710,41	6.070	3.334,34	2.595,66	5.930	1.057,87	2.812,13	3.870
Deutschland (DM)	679,30	697	1.376,30	671,50	642	1.313,50	601,30	699	1.300,30
Ellas (DR)	26.011,72	30.988,28	57.000	24011,43	28.988,57	53.000	7806,67	20.193,33	28.000
France (FF)	2.758,20	2.246,80	5.005	2.588,50	2.086,50	4.675	1.657	2.233	3.890
Ireland (I.£)	356,33	277,55	633,88	355,41	273,56	628,97	275,53	277,62	553,15
Italia (Lire)	849,210	450.790	1.300.000	840.870	409.130	1.250.000	188.260	429.740	618.000
Luxembourg (FL)	11.820	14.780	26.600	11.710	13.890	25.600	6.580	14.820	21.400
Nederland (FL)	1.015	794	1.809	1.008	757	1.765	398	840	1.238
U. Kingdom (£)	214,50	180,40	394,90	213,30	172,40	385,70	186,30	182,20	368,50

	Gasoil Chauffage Heating Gasoil 1000 L (3)			Fuel Lourd HTS Heavy Fuel HSC Tonne (3)		
	Taxes	Hors taxes Without Taxes	Prix de vente Selling Price	Taxes	Hors taxes Without Taxes	Prix de vente Selling Price
Belgique (FB)	2.227	13.103	15.330	-	10.074	10.074
Danmark (KD)	1.014,59	2.615,41	3.630	410	2.020	2.430
Deutschland (DM)	110	654	764		534	549,30
Ellas (DR)	7.806,67	20.193,33	28.000	3.508	15.492	19.000
France (FF)	600,40	2.136,60	2.737	57	1.642	1.699
Ireland (I.£)	29,68	226,02	255,70	19,61	179,26	198,87
Italia (Lire)	185.997	414.660	600.657	1.000	320.897	321.897
Luxembourg (FL)	860	14.260	15.120	100	10.877	10.977
Nederland (FL)	187	769	956	11,20	623	634,20
U. Kingdom (£)	7,7	194,20	201,90	7,93	130,71	147,64

Taux de change au 15.2.1984

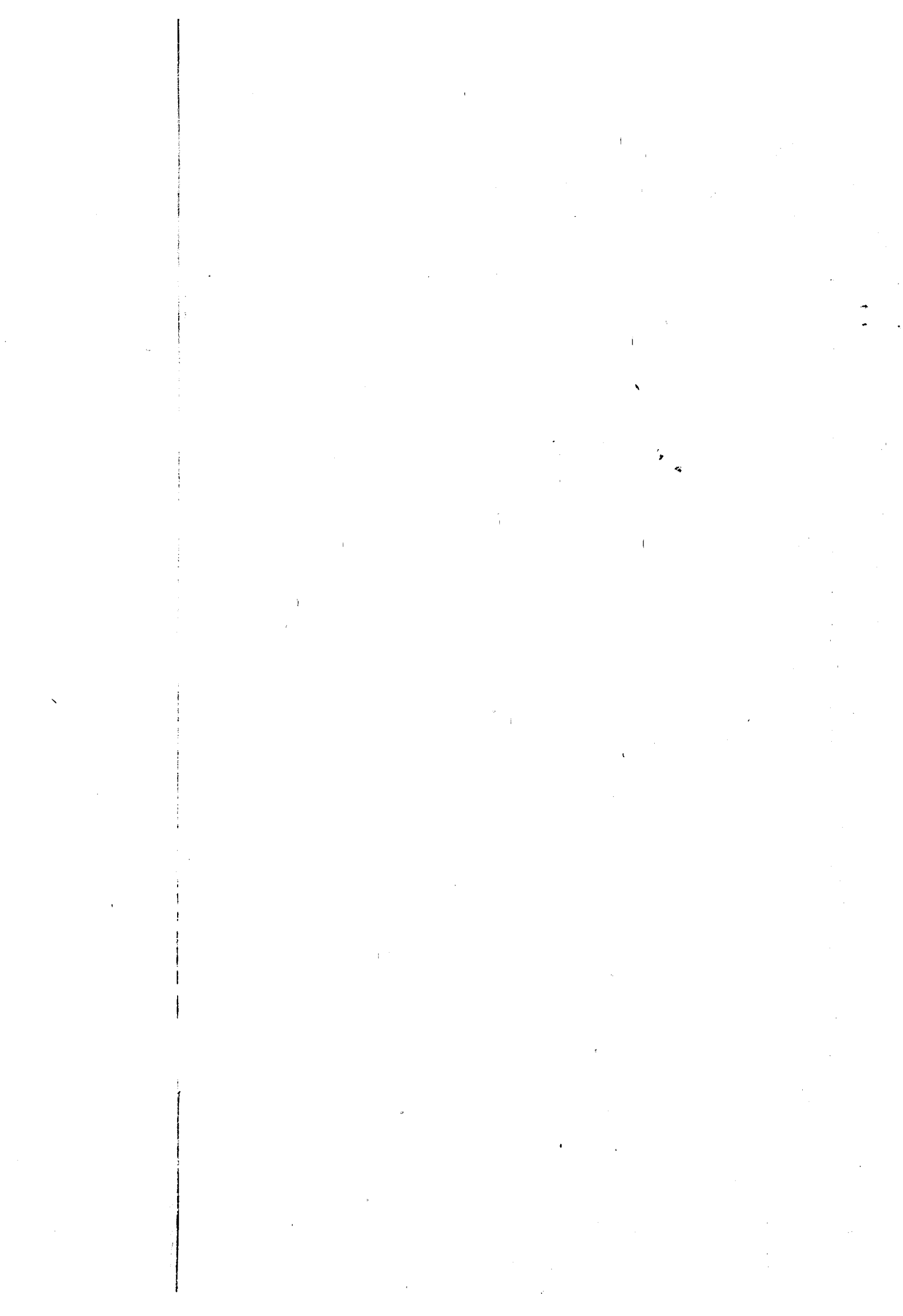
1£ = 55,0375 FB - 9,8025 CD -  
2,6880 DM - 101,05 DR -  
8,2925 FF - 0,8722 £ irl -  
1.663 Lires - 0,6958 £ angl. -  
3,0330 FL.

1 écu = 45,88 FB - 8,17149 CD -  
2,24075 DM - 84,2366 DR -  
6,91274 FF - 0,727094 £ irl.  
1.386,30 Lires - 2,52835 FL.  
0,580106 UK £

(1) Prix à la pompe/Pump price

(2) Livraisons de 2000 à 5000 L./deliveries of 2,000 to 5,000 L.

(3) Livraisons de moins 2000 tonnes par mois et de moins de 24.000 tonnes par an  
Offtakes of less than 2,000 tons per month or less than 24,000 tons per year.





**PRESSE-MEDELDELSE · MITTEILUNG AN DIE PRESSE · PRESS-RELEASE · INFORMATION A LA PRESSE  
ΑΝΑΚΟΙΝΩΣΗ ΓΙΑ ΤΟΝ ΤΥΠΟ · INFORMAZIONE ALLA STAMPA · MEDEDELING AAN DE PERS**

Brussels, 17 May 1984.

COMMISSION OIL BULLETIN NO. 243

4417.411

The weekly oil bulletin, published by the Commission, gives the latest available data relating to price development in the Member States and for the Community as a whole. The Commission considers that the bulletin contributes to improved transparency as regards Community oil markets.

The figures given in each bulletin follow the development over time of certain prices. They permit a comparison at any instant in time between Member States but such a comparison may not be representative of international price relationships over a longer period. Moreover, it is evident that such a comparison is limited even if fluctuations in exchange rates are ignored; although valid for identical products sold to the same categories of consumer no account is taken of market structures, (the product categories reported are not in every case representative of the bulk of sales for each product in each country), quality specifications and methods of distribution which are unique to each Member State. In this context the essentially indicative nature of some elements of table 2 is emphasised.

A detailed methodology will be appended to the bulletin published at the beginning of each quarter.

The Commission Oil Bulletin is freely available on demand (telephone 235.35.75).

Weekly summary :

Evolution (in %) of Community indications for :

1<sup>o</sup>) Weighted average pre-tax prices  
for principal oil products at 7.5.1984 (Table 2)

compared with 15.12.1978

+64%

compared with previous week

-0,70%

2<sup>o</sup>) Weighted average CIF cost of crude  
oil supplies for January 1984 (Table 3)

compared with 15.12.1978

+111,50%

(1) The CIF supply cost is derived from monthly declarations by Member States (see Oil Bulletin 207 for methodology).

Niveaux indicatifs hebdomadaires des prix hors taxes à la consommation en monnaies nationales  
Weekly indicative consumer price levels in national currencies. Tax and duties excluded (1)

(Tableau hebdomadaire)

Prix au : 7.5.1984  
Prices as at

TABLEAU 1  
TABLE

	Essence super Premium gasoline 1000 L (2)	Essence normale Regular gasoline 1000 L (2)	Gasoil moteur Automotive gasoil 1000 L (2)	Gasoil chauffage Heating gasoil 1000 L (3)	Fuel Residual HTS Residual Fuel Oil HSC Tonne (4)
Belgique (FB)*	15.440	14.800	14.374	12.983	10.856
Danmark (DK)	2.835	2.720	2.715	2.485	1.855
Deutschland (DM)	703	648	725	624	522
Ellas (DR)	30.988	28.988	20.193	20.193	15.492
France (FF)	2.141,00	2.002,70	2.179,80	2.079,80	1.619
Irlande (Irish £)	270,82	265,92	278,39	226,37	175,51
Italie (Lire)	434.130	392.460	443.650	409.793	322.644
Luxembourg (FL)	14.510	13.740	14.370	13.760	10.592
Nederland (FL)	781	754	786	724	604
United Kingdom (£)	180,30	170,80	187,00	206,10	143,00

(1) Prix les plus souvent pratiqués et ainsi représentatifs, selon les meilleures estimations des experts des Etats Membres, du marché pétrolier de chaque Etat Membre.  
Prices most frequently charged and thus representative, of the oil market in each Member State, according to the best estimates of the national experts.

(2) Prix à la pompe/Pump price.

(3) Prix pour livraison de 2.000 à 5.000 litres/Prices for deliveries of 2,000 to 5,000 litres.

(4) Prix pour livraisons inférieures à 2000 tonnes par mois ou inférieures à 24.000 tonnes par an. Prix franco consommateurs.  
Prices for offtakes of less than 2,000 tons per month or less than 24,000 tons per year. Delivered Consumer Prices.

\* Prix maximaux/Maximum prices.

Niveaux indicatifs hebdomadaires des prix hors taxes à la consommation en dollars courants  
Weekly indicative consumer price levels in current dollars. Tax and duties excluded (1)

(Tableau hebdomadaire)

Prix au : 7.5.1984  
Prices as at

TABLEAU 2  
TABLE

	Essence super Premium gasoline 1000 L (2)	Essence normale Regular gasoline 1000 L (2)	Gasoil moteur automotive gasoil 1000 L (2)	Gasoil chauffage Heating gasoil 1000 L (3)	Fuel Residual HTS Residual Fuel Oil HSC Tonne (4)
Belgique *	275,19	263,79	256,19	231,40	193,49
Danmark	281,59	270,17	269,67	246,83	184,25
Deutschland	255,17	235,20	263,15	226,49	189,47
Ellas	286,36	267,88	186,60	186,60	143,16
France	253,14	236,79	257,73	245,91	191,42
Irlande	301,44	295,99	309,87	251,97	195,35
Italie	254,73	230,28	260,31	240,45	189,31
Luxembourg	258,62	244,89	256,12	245,25	188,78
Nederland	251,97	243,26	253,58	233,58	194,87
United Kingdom	251,32	238,08	260,66	287,28	199,33
C.E.E./E.E.C.					
a) Moyenne/Average (5)	255,82	238,20	259,39	240,65	189,95
b) Variation moyenne % Average variation % 7.5.84 /15.12.78	+33%	+30%	+49%	+66%	+99%
c) Variation moyenne sur les 5 produits Average variation for all 5 products 7.5.84 /15.12.78			+64%		

(1) Prix les plus souvent pratiqués et ainsi représentatifs, selon les meilleures estimations des experts des Etats Membres, du marché pétrolier de chaque Etat Membre.  
Prices most frequently charged and thus representative of the oil market in each Member State, according to the best estimates of the national experts.

(2) Prix à la pompe/ Pump price

(3) Prix pour livraison de 2.000 à 5.000 litres./ Prices for deliveries of 2,000 to 5,000 litres.

(4) Prix pour livraison inférieure à 2000 tonnes par mois ou inférieure à 24.000 tonnes par an. Prix franco consommateurs.  
Prices for offtakes of less than 2,000 tons per month or less than 24,000 tons per year. Delivered Consumer Prices.

(5) La moyenne résulte d'une pondération des quantités consommées de chaque produit concerné au cours de l'année 1982  
The result of weighting the prices of the products concerned by the quantities consumed during the period 1982

\* Prix maximaux/Maximum prices.

TABLEAU 3  
TABLE

Coût CAF d'approvisionnement en brut de La Communauté.  
CIF Cost of Community crude oil supplies.

	S/B	S/T
Prix au Price as at 15.12.78	13,87	107,78
Prix au janvier 1984 Price as at January 1984	29,33	+217,63
Evolution (X) 7.5.84 /15.12.78		+111,50%



IP (84) 189

**PRESSE-MEDELDELSE · MITTEILUNG AN DIE PRESSE · PRESS-RELEASE · INFORMATION A LA PRESSE  
 ΑΝΑΚΟΙΝΩΣΗ ΓΙΑ ΤΟΝ ΤΥΠΟ · INFORMAZIONE ALLA STAMPA · MEDEDELING AAN DE PERS**

4417.411

Brussels, 24 May 1984

**COMMISSION OIL BULLETIN NO.244**

The weekly oil bulletin, published by the Commission, gives the latest available data relating to price development in the Member States and for the Community as a whole. The Commission considers that the bulletin contributes to improved transparency as regards Community oil markets.

The figures given in each bulletin follow the development over time of certain prices. They permit a comparison at any instant in time between Member States but such a comparison may not be representative of international price relationships over a longer period. Moreover, it is evident that such a comparison is limited even if fluctuations in exchange rates are ignored; although valid for identical products sold to the same categories of consumer no account is taken of market structures, (the product categories reported are not in every case representative of the bulk of sales for each product in each country), quality specifications and methods of distribution which are unique to each Member State. In this context the essentially indicative nature of some elements of table 2 is emphasised.

A detailed methodology will be appended to the bulletin published at the beginning of each quarter.

The Commission Oil Bulletin is freely available on demand (telephone 235.35.75).

Weekly summary :

Evolution (in %) of Community indications for :

<p>1<sup>o</sup>) Weighted average pre-tax prices for principal oil products at 14.5.1984 (Table 2)</p> <p>compared with 15.12.1978</p> <p>compared with previous week</p>	<p>+64%</p> <hr/> <p>-</p> <hr/>
<p>2<sup>o</sup>) Weighted average CIF cost of crude oil supplies for FEBRUARY 1984 (Table 3)</p> <p>compared with 15.12.1978</p>	<p>111 %</p> <hr/>
<p>(1) The CIF supply cost is derived from monthly declarations by Member States (see Oil Bulletin 207 for methodology).</p>	

Niveaux indicatifs hebdomadaires des prix hors taxes à la consommation en monnaies nationales  
Weekly indicative consumer price levels in national currencies. Tax and duties excluded (1)

(Tableau hebdomadaire)

Prix au  
Prices as at : 14.5.1984

TABLEAU 1  
TABLE

	Essence super Premium gasoline 1000 L (2)	Essence normale Regular gasoline 1000 L (2)	Gasoil moteur Automotive gasoil 1000 L (2)	Gasoil chauffage Heating gasoil 1000 L (3)	Fuel Residuel HTS Residual Fuel Oil HSC Tonne (4)
Belgique (FB)*	15.440	14.800	14.374	12.983	11.110
Danmark (DK)	2.790	2.675	2.715	2.485	1.915
Deutschland (DM)	689	634	713	628	516
Ellas (DR)	30.988	28.988	20.193	20.193	15.492
France (FF)	2.132,60	2.002,70	2.171,40	2.070,50	1.689
Irèland (Irish £)	270,82	265,92	278,39	226,37	175,51
Italia (Lire)	434.130	392.460	443.650	409.793	322.949
Luxembourg (FL)	14.820	14.200	13.980	13.420	10.986
Nederland (FL)	781	754	786	724	615
United Kingdom (£)	180,30	170,80	187,00	206,10	143,00

(1) Prix le plus souvent pratiqués et ainsi représentatifs, selon les meilleures estimations des experts des Etats Membres, du marché pétrolier de chaque Etat Membre.  
Prices most frequently charged and thus representative, of the oil market in each Member State, according to the best estimates of the national experts.

(2) Prix à la pompe/Pump price.

(3) Prix pour livraison de 2.000 à 5.000 litres/Prices for deliveries of 2,000 to 5,000 litres.

(4) Prix pour livraisons inférieures à 2000 tonnes par mois ou inférieures à 24.000 tonnes par an. Prix franco consommateurs.  
Prices for offtakes of less than 2,000 tons per month or less than 24,000 tons per year. Delivered Consumer Prices.

\*: Prix maximaux/Maximum prices.

Niveaux indicatifs hebdomadaires des prix hors taxes à la consommation en dollars courants  
Weekly indicative consumer price levels in current dollars. Tax and duties excluded (1)

(Tableau hebdomadaire)

Prix au  
Prices as at : 14.5.1984.

TABLEAU 2  
TABLE

	Essence super Premium gasoline 1000 L (2)	Essence normale Regular gasoline 1000 L (2)	Gasoil moteur automotive gasoil 1000 L (2)	Gasoil chauffage Heating gasoil <sup>o</sup> 1000 L (3)	Fuel Residuel HTS Residual Fuel Oil HSC Tonne (4)
Belgique *	274,62	263,23	255,66	230,92	197,60
Danmark	276,23	264,85	268,81	246,03	189,60
Deutschland	249,72	229,79	258,42	227,61	187,02
Ellas	285,70	267,26	186,17	186,17	142,83
France	251,48	236,16	256,06	244,16	199,17
Irèland	301,58	296,12	310,01	252,08	195,44
Italia	255,07	230,58	260,66	240,77	189,74
Luxembourg	263,59	252,56	248,65	238,69	195,40
Nederland	251,52	242,83	253,14	233,17	198,06
United Kingdom	249,82	236,66	259,11	285,57	198,14
C.E.E./E.E.C.					
a) Moyenne/Average (5)	253,94	234,75	257,53	240,37	191,35
b) Variation moyenne % Average variation % 14.5.84 /15.12.78	+32%	+28%	+48%	+66%	+101%
c) Variation moyenne sur Les 5 produits Average variation for all 5 products 14.5.84 /15.12.78			+64%		

(1) Prix les plus souvent pratiqués et ainsi représentatifs, selon les meilleures estimations des experts des Etats Membres, du marché pétrolier de chaque Etat Membre.  
Prices most frequently charged and thus representative of the oil market in each Member State, according to the best estimates of the national experts.

2) Prix à la pompe/ Pump price

3) Prix pour livraison de 2.000 à 5.000 litres./ Prices for deliveries of 2,000 to 5,000 litres.

4) Prix pour livraison inférieure à 2000 tonnes par mois ou inférieure à 24.000 tonnes par an. Prix franco consommateurs.  
Prices for offtakes of less than 2,000 tons per month or less than 24,000 tons per year. Delivered Consumer Prices.

5) La moyenne résulte d'une pondération des quantités consommées de chaque produit concerné au cours de l'année 1982  
The result of weighting the prices of the products concerned by the quantities consumed during the period 1982

\*: Prix maximaux/Maximum prices.

**Prix de vente des produits pétroliers en monnaies nationales**  
**Selling Prices of Petroleum Products in National currencies.**

(Tableau mensuel)

Prix moyens pratiqués au  
Average of prices ruling as at 15.3.1984

TABLEAU 4  
TABLE

	Essence super Premium Gasoline 1000 L (1)			Essence Normale Regular Gasoline 1000 L (1)			Gasoil Moteur Automotive Gasoil 1000 L (1)		
	Taxes	Hors taxes Without Taxes	Prix de vente Selling Price	Taxes	Hors taxes Without Taxes	Prix de vente Selling Price	Taxes	Hors taxes Without taxes	Prix de vente Selling Price
Belgique (FB)	17.280	13.120	30.400	17.100	12.400	29.500	10.110	14.190	24.300
Danmark (KD)	3.377,63	2.792,37	6.170	3.352,38	2.677,62	6.030	1.034,43	2.705,57	3.740
Deutschland (DM)	677,30	684	1.361,30	699,40	630	1.299,40	601,10	696	1.297,10
Ellas (DR)	26.011,72	30.988,28	57.000	24.011,43	28.988,57	53.000	7.806,67	20.193,33	28.000
France (FF)	2.748,80	2.196,20	4.945	2.579,10	2.035,90	4.615	1.653,80	2.216,20	3.870
Ireland (I.£)	356,33	277,55	633,88	355,41	273,56	628,97	275,53	277,62	553,15
Italia (Lire)	849.210	450.790	1.300.000	840.870	409.130	1.250.000	109.350	443.650	634.000
Luxembourg (FL)	11.780	14.820	26.600	11.700	14.200	25.900	6.520	13.980	20.500
Nederland (FL)	1.009	764	1.773	1.004	737	1.741	388	789	1.177
U. Kingdom (£)	223,70	175,70	399,40	222,50	167,70	390,20	193,50	180,20	373,70

	Gasoil Chauffage Heating Gasoil 1000 L (3)			Fuel Lourd HTS Heavy Fuel HSC Tonne (3)		
	Taxes	Hors taxes Without Taxes	Prix de vente Selling Price	Taxes	Hors taxes Without Taxes	Prix de vente Selling Price
Belgique (FB)	2.182	12.838	15.020	-	9.996	9.996
Danmark (KD)	992,95	2.517,05	3.510	410	1.965	2.375
Deutschland (DM)	108	637	745	15	532,10	547,10
Ellas (DR)	7.806,67	20.193,33	28.000	3.508	15.492	19.000
France (FF)	596,80	2.117,20	2.714	57	1.576	1.633
Ireland (I.£)	29,65	225,45	255,10	10,14	179,21	189,35
Italia (Lire)	187.838	426.935	614.773	1.000	321.257	322.257
Luxembourg (FL)	810	13.420	14.230	100	10.986	11.086
Nederland (FL)	179	727	906	11,20	584	595,20
U. Kingdom (£)	7,70	192,20	199,90	7,93	138,64	146,57

Taux de change au 15.3.1984

1£ = 52,93 FB - 9,4625 CD -  
2,5850 DM - 102,11 DR -  
7,9725 FF - 0,8453 £ Irl. -  
1,607,50 Lires - 2,9185 FL -  
0,6863 £ angl.

10cu = 45,679 FB - 8,1662 CD -  
2,23087 DM - 88,1217 DR -  
6,88032 FF - 0,729507 IRL  
1,387,28 Lires - 2,51869 FL  
0,592318 UKL.

(1) Prix à la pompe/Pump price

(2) Livraisons de 2000 à 5000 L./Deliveries of 2,000 to 5,000 L.

(3) Livraisons de moins 2000 tonnes par mois et de moins de 24.000 tonnes par an  
Offtakes of less than 2,000 tons per month or less than 24,000 tons per year.

TABLEAU 3  
TABLE

Coût CAF D'approvisionnement en brut de la Communauté.

CIF Cost of Community crude oil supplies.

	<u>\$/B</u>	<u>\$/T</u>
Prix au 15.12.78	13,87	107,76
Price as at		
Prix au Février 1984	29,26	± 216,23
Price as at February 1984		
Evolution (%)		
14.5.84 /15.12.78		

+ 111,-X



**PRESSE-MEDDELELSE • MITTEILUNG AN DIE PRESSE • PRESS-RELEASE • INFORMATION A LA PRESSE  
 ΑΝΑΚΟΙΝΩΣΗ ΓΙΑ ΤΟΝ ΤΥΠΟ • INFORMAZIONE ALLA STAMPA • MEDEDELING AAN DE PERS**

4417.411

Brussels, 30 May 1984.

COMMISSION OIL BULLETIN NO. 245

The weekly oil bulletin, published by the Commission, gives the latest available data relating to price development in the Member States and for the Community as a whole. The Commission considers that the bulletin contributes to improved transparency as regards Community oil markets.

The figures given in each bulletin follow the development over time of certain prices. They permit a comparison at any instant in time between Member States but such a comparison may not be representative of international price relationships over a longer period. Moreover, it is evident that such a comparison is limited even if fluctuations in exchange rates are ignored; although valid for identical products sold to the same categories of consumer no account is taken of market structures, (the product categories reported are not in every case representative of the bulk of sales for each product in each country), quality specifications and methods of distribution which are unique to each Member State. In this context the essentially indicative nature of some elements of table 2 is emphasised.

A detailed methodology will be appended to the bulletin published at the beginning of each quarter.

The Commission Oil Bulletin is freely available on demand (telephone 235.35.75).

Weekly summary :

Evolution (in %) of Community indications for :

19) Weighted average pre-tax prices for principal oil products at 21.5.1984 (Table 2)	
compared with 15.12.1978	+65%
compared with previous week	+0.76%
20) Weighted average CIF cost of crude oil supplies for février 1984 (Table 3)	
compared with 15.12.1978	+111,-%

(1) The CIF supply cost is derived from monthly declarations by Member States (see Oil Bulletin 207 for methodology).

Niveaux indicatifs hebdomadaires des prix hors taxes à la consommation en monnaies nationales  
Weekly indicative consumer price levels in national currencies. Tax and duties excluded (1)

(Tableau hebdomadaire)

Prix au  
Prices as at : 21.5.1984

TABLEAU 1  
TABLE

	Essence super Premium gasoline 1000 L (2)	Essence normale Regular gasoline 1000 L (2)	Gasoil moteur Automotive gasoil 1000 L (2)	Gasoil chauffage Heating gasoil 1000 L (3)	Fuel Residuel HTS Residual Fuel Oil HSC Tonne (4)
Belgique (FB2)	15.440	14.800	14.614	13.222	11.336
Danmark (DK)	2.710	2.595	2.715	2.485	1.915
Deutschland (DR)	712	655	725	640	517
Ellas (GR)	30.988	28.988	20.193	20.193	15.492
France (FF)	2.132,60	2.002,70	2.171,40	2.070,50	1.689
Irlande (Irish L)	270,82	265,92	278,39	226,37	175,51
Italie (Lire)	434.130	392.460	443.650	410.020	327.540
Luxembourg (FL)	14.820	14.200	13.980	13.420	10.986
Nederland (FL)	789	763	803	741	628
United Kingdom (L)	180,30	170,80	187,00	206,00	142,60

(1) Prix les plus souvent pratiqués et ainsi représentatifs, selon les meilleures estimations des experts des Etats Membres, du marché pétrolier de chaque Etat Membre.  
Prices most frequently charged and thus representative, of the oil market in each Member State, according to the best estimates of the national experts.

(2) Prix à la pompe/pump price.

(3) Prix pour livraison de 2.000 à 5.000 litres/Prices for deliveries of 2,000 to 5,000 litres.

(4) Prix pour livraisons inférieures à 2000 tonnes par mois ou inférieures à 24.000 tonnes par an. Prix franco consommateurs.  
Prices for offtakes of less than 2,000 tons per month or less than 24,000 tons per year. Delivered Consumer Prices.

(5) Prix maximaux/Maximum prices.

Niveaux indicatifs hebdomadaires des prix hors taxes à la consommation en dollars courants  
Weekly indicative consumer price levels in current dollars. Tax and duties excluded (1)

(Tableau hebdomadaire)

Prix au  
Prices as at : 21.5.1984

TABLEAU 2  
TABLE

	Essence super Premium gasoline 1000 L (2)	Essence normale Regular gasoline 1000 L (2)	Gasoil moteur automotive gasoil 1000 L (2)	Gasoil chauffage Heating gasoil 1000 L (3)	Fuel Residuel HTS Residual Fuel Oil HSC Tonne (4)
Belgique *	274,89	263,49	260,18	235,40	201,82
Danmark	267,91	256,54	268,41	245,67	189,32
Deutschland	257,59	236,97	262,30	231,54	187,04
Ellas	285,07	266,67	185,76	185,76	142,52
France	251,20	235,90	255,77	243,88	198,95
Irlande	301,17	295,72	309,59	251,74	195,18
Italie	254,88	230,41	260,47	240,72	192,30
Luxembourg	263,85	252,81	248,89	239,92	195,59
Nederland	253,73	245,37	258,24	238,30	201,96
United Kingdom	251,21	237,98	260,55	287,02	198,69
C.E.E./E.E.C.					
a) Moyenne/Average (5)	255,69	238,77	259,05	242,32	192,54
b) Variation moyenne % Average variation % 21.5.1984 /15.12.78	+33%	+30%	+49%	+67%	+102%
c) Variation moyenne sur les 5 produits Average variation for all 5 products 21.5.1984 /15.12.78			+65%		

(1) Prix les plus souvent pratiqués et ainsi représentatifs, selon les meilleures estimations des experts des Etats Membres, du marché pétrolier de chaque Etat Membre.  
Prices most frequently charged and thus representative of the oil market in each Member State, according to the best estimates of the national experts.

(2) Prix à la pompe/ Pump price

(3) Prix pour livraison de 2.000 à 5.000 litres./ Prices for deliveries of 2,000 to 5,000 litres.

(4) Prix pour livraison inférieure à 2000 tonnes par mois ou inférieure à 24.000 tonnes par an. Prix franco consommateurs.  
Prices for offtakes of less than 2,000 tons per month or less than 24,000 tons per year. Delivered Consumer Prices.

(5) La moyenne résulte d'une pondération des quantités consommées de chaque produit concerné au cours de l'année 1982  
The result of weighting the prices of the products concerned by the quantities consumed during the period 1982

Prix maximaux/Maximum prices.

TABLEAU 3  
TABLE

Coût CAF d'approvisionnement en brut de la Communauté.  
CIF Cost of Community crude oil supplies.

	S/B	S/T
Prix au Price as at 15.12.78	13,87	107,76
Prix au février 1984 Price as at February 1984	29,26	+216,23
Evolution (%) 21.5.1984/15.12.78		+111,-%

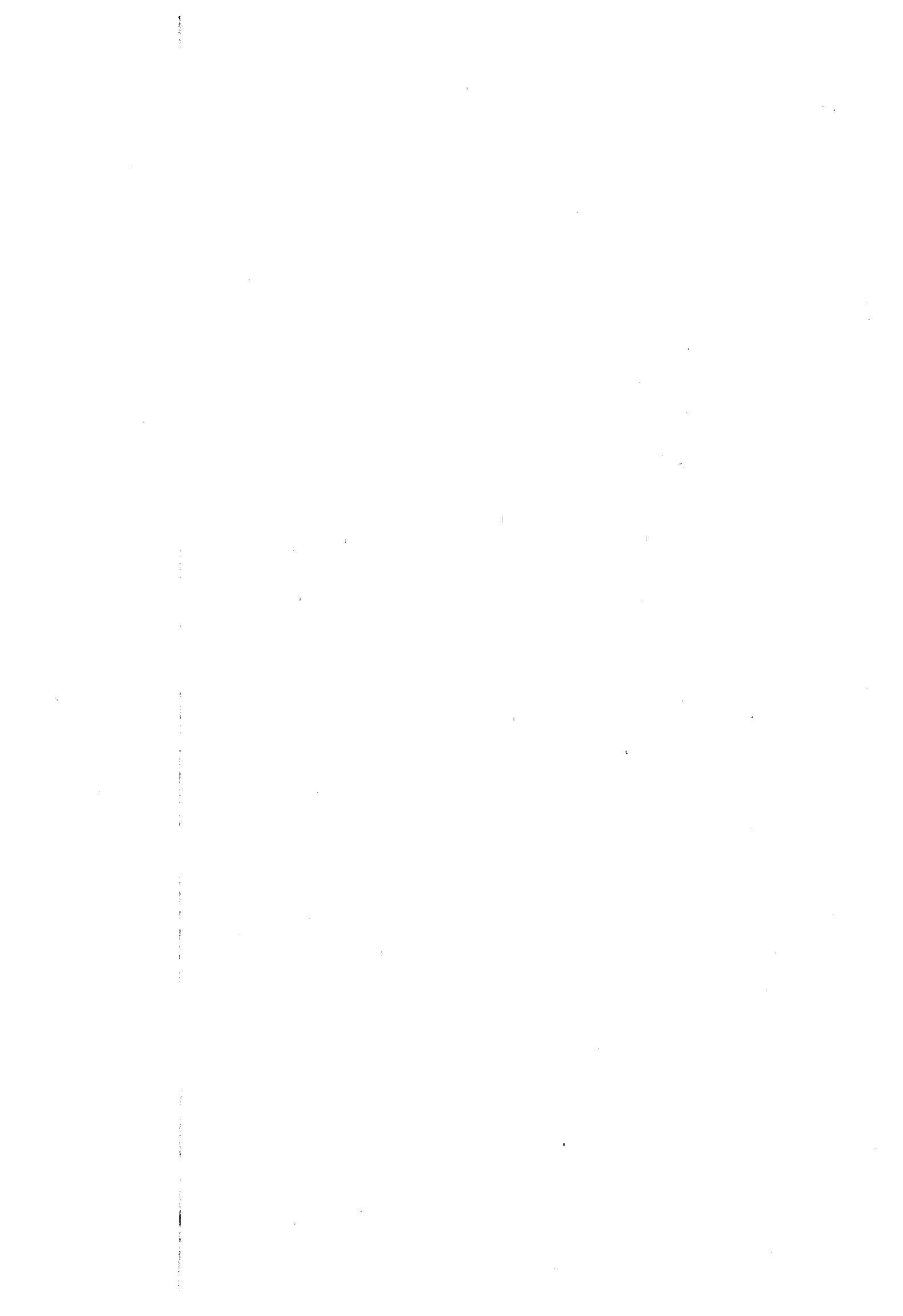
BULLETIN PETROLIER CEE NO. 245  
 EEC OIL BULLETIN NO. 245

Prix C.A.F. moyen de l'approvisionnement en pétrole brut de la Communauté  
 en \$ par baril.

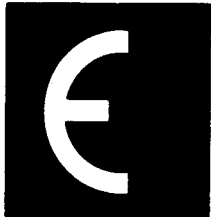
Average C.I.F. prices of Community supplies of crude oil in \$ per barrel

	BEL	DEN	GERM	FRAN	IRE	ITAL	NETH	U.K.	EEC \$/bbl	Index (1) Indice
4 <sup>e</sup> Trim 78 4 <sup>th</sup> Q 78	13,95	13,92	14,04	14,19	13,88	13,29	13,84	13,83	13,87	100,0
1 <sup>er</sup> Trim 81 1 <sup>st</sup> Q 81	-	38,50	38,40	37,30	35,90	36,85	36,70	37,58	37,45	270,-
2 <sup>e</sup> Trim 81 2 <sup>nd</sup> Q 81	-	37,53	37,38	37,76	37,11	36,82	37,53	37,51	37,39	269,5
3 <sup>e</sup> Trim 81 3 <sup>rd</sup> Q 81	-	34,69	35,64	36,41	-	35,52	35,38	35,01	35,65	257,-
4 <sup>e</sup> Trim 81 4 <sup>th</sup> Q 81	-	35,48	35,82	36,07	-	34,89	35,49	35,63	35,62	257,-
1 <sup>er</sup> Trim 82 1 <sup>st</sup> Q 82	-	34,42	35,18	35,99	-	34,19	35,50	34,67	35,10	253,-
2 <sup>e</sup> Trim 82 2 <sup>nd</sup> Q 82	-	32,30	33,12	34,46	-	32,08	32,65	32,13	32,97	237,-
3 <sup>e</sup> Trim 82 3 <sup>rd</sup> Q 82	-	33,39	33,60	34,84	33,30	32,43	33,25	33,57	33,57	242,-
4 <sup>e</sup> Trim 82 4 <sup>th</sup> Q 82	-	33,59	33,80	34,64	34,17	32,67	33,54	33,75	33,69	243,-
1 <sup>er</sup> Trim 83 1 <sup>st</sup> Q 83	-	31,75	31,48	33,19	32,17	30,77	32,07	31,73	31,81	229,-
2 <sup>e</sup> Trim 83 2 <sup>nd</sup> Q 83	-	29,43	29,24	30,07	30,02	28,57	29,21	29,58	29,34	212,-
3 <sup>e</sup> Trim 83 3 <sup>rd</sup> Q 83	28,74	29,52	29,53	30,18	30,53	29,20	29,10	29,75	29,56	213,-
4 <sup>e</sup> Trim. 83 4 <sup>th</sup> Q 83	-	29,65	29,79	30,11	30,06	28,86	29,24	29,59	29,56	213,-

(1) Base 4<sup>e</sup> Trimestre 1978 = 100  
 Basis 4<sup>th</sup> Quarter 1978 = 100







**PRESSE-MEDDELELSE · MITTEILUNG AN DIE PRESSE · PRESS-RELEASE · INFORMATION A LA PRESSE  
ΑΝΑΚΟΙΝΩΣΗ ΓΙΑ ΤΟΝ ΤΥΠΟ · INFORMAZIONE ALLA STAMPA · MEDEDELING AAN DE PERS**

4417.411

Brussels, 7 June 1984.

COMMISSION OIL BULLETIN NO. 246

The weekly oil bulletin, published by the Commission, gives the latest available data relating to price development in the Member States and for the Community as a whole. The Commission considers that the bulletin contributes to improved transparency as regards Community oil markets.

The figures given in each bulletin follow the development over time of certain prices. They permit a comparison at any instant in time between Member States but such a comparison may not be representative of international price relationships over a longer period. Moreover, it is evident that such a comparison is limited even if fluctuations in exchange rates are ignored; although valid for identical products sold to the same categories of consumer no account is taken of market structures, (the product categories reported are not in every case representative of the bulk of sales for each product in each country), quality specifications and methods of distribution which are unique to each Member State. In this context the essentially indicative nature of some elements of table 2 is emphasised.

A detailed methodology will be appended to the bulletin published at the beginning of each quarter.

The Commission Oil Bulletin is freely available on demand (telephone 235.35.75).

Weekly summary :

Evolution (in %) of Community indications for :

1<sup>o</sup>) Weighted average pre-tax prices  
for principal oil products at 28.5.1984 (Table 2)

compared with 15.12.1978

+68%

compared with previous week

+1,72%

2<sup>o</sup>) Weighted average CIF cost of crude  
oil supplies for February 1984 (Table 3)

compared with 15.12.1978

+111,-%

(1) The CIF supply cost is derived from monthly declarations by Member States (see Oil Bulletin 207 for methodology).

**THE NEXT BULLETIN WILL BE PUBLISHED ON 21 JUNE 1984**

Niveaux indicatifs hebdomadaires des prix hors taxes à la consommation en monnaies nationales  
Weekly indicative consumer price levels in national currencies. Tax and duties excluded (1)

(Tableau hebdomadaire)

Prix au  
Prices as at : 28.5.1984

TABLEAU 1  
TABLE

	Essence super Premium gasoline 1000 L (2)	Essence normale Regular gasoline 1000 L (2)	Gasoil moteur Automotive gasoil 1000 L (2)	Gasoil chauffage Heating gasoil 1000 L (3)	Fuel Residual MTS Residual Fuel Oil MSC Tonne (4)
Belgique (FB)	15.840	15.200	14.878	13.487	11.336
Danemark (DK)	2.875	2.760	2.715	2.485	1.915
Deutschland (DM)	723	665	734	652	526
Ellas (DR)	30.988	28.988	20.193	20.193	15.492
France (FF)	2.132,40	2.002,70	2.171,40	2.070,50	1.689
Irlande (Irish £)	270,82	265,92	278,39	226,37	175,51
Italia (Lire)	434.130	392.460	443.650	410.020	327.214
Luxembourg (FL)	14.820	14.200	13.980	13.420	10.986
Nederland (FL)	804	779	816	754	632
United Kingdom (£)	178,60	168,80	187,00	212,00	151,30

(1) Prix les plus souvent pratiqués et ainsi représentatifs, selon les meilleures estimations des experts des Etats Membres, du marché pétrolier de chaque Etat Membre.  
Prices most frequently changed and thus representative, of the oil market in each Member State, according to the best estimates of the national experts.

(2) Prix à la pompe/Pump price.

(3) Prix pour livraison de 2.000 à 5.000 litres/Prices for deliveries of 2,000 to 5,000 litres.

(4) Prix pour livraisons inférieures à 2000 tonnes par mois ou inférieures à 24.000 tonnes par an. Prix franco consommateurs.  
Prices for offtakes of less than 2,000 tons per month or less than 24,000 tons per year. Delivered Consumer Prices.

(5) Prix maximaux/Maximum prices.

Niveaux indicatifs hebdomadaires des prix hors taxes à la consommation en dollars courants  
Weekly indicative consumer price levels in current dollars. Tax and duties excluded (1)

(Tableau hebdomadaire)

Prix au  
Prices as at : 28.5.1984

TABLEAU 2  
TABLE

	Essence super Premium gasoline 1000 L (2)	Essence normale Regular gasoline 1000 L (2)	Gasoil moteur automotive gasoil 1000 L (2)	Gasoil chauffage Heating gasoil 1000 L (3)	Fuel Residual MTS Residual Fuel Oil MSC Tonne (4)
Belgique	284,70	273,19	267,40	242,40	203,74
Danemark	287,21	275,72	271,22	248,25	191,30
Deutschland	265,07	243,81	269,84	239,04	192,85
Ellas	287,13	268,60	187,11	187,11	143,55
France	253,98	238,51	258,60	246,59	201,15
Irlande	304,56	299,05	313,07	254,57	197,37
Italia	257,30	232,60	262,94	243,01	193,93
Luxembourg	264,36	255,22	251,26	241,20	197,45
Nederland	261,50	253,37	265,40	245,24	205,56
United Kingdom	247,19	233,63	258,82	293,42	209,41
C.E.E./E.E.C.					
a) Moyenne/Average (5)	258,28	243,33	262,90	247,54	196,65
b) Variation moyenne X Average variation X 28.5.84 /15.12.78	+34%	+32%	+51%	+71%	+106%
c) Variation moyenne sur les 5 produits Average variation for all 5 products 28.5.84 /15.12.78			+68%		

(1) Prix les plus souvent pratiqués et ainsi représentatifs, selon les meilleures estimations des experts des Etats Membres, du marché pétrolier de chaque Etat Membre.  
Prices most frequently charged and thus representative of the oil market in each Member State, according to the best estimates of the national experts.

(2) Prix à la pompe/ Pump price

(3) Prix pour livraison de 2.000 à 5.000 litres./ Prices for deliveries of 2,000 to 5,000 litres.

(4) Prix pour livraison inférieure à 2000 tonnes par mois ou inférieure à 24.000 tonnes par an. Prix franco consommateurs.  
Prices for offtakes of less than 2,000 tons per month or less than 24,000 tons per year. Delivered Consumer Prices.

(5) La moyenne résulte d'une pondération des quantités consommées de chaque produit concerné au cours de l'année 1982  
The result of weighting the prices of the products concerned by the quantities consumed during the period 1982

(6) Prix maximaux/Maximum prices.

TABLEAU 3  
TABLE

Coût CAF d'approvisionnement en brut de la Communauté.  
CIF Cost of Community crude oil supplies.

	S/D	S/T
Prix au Price as at 15.12.78	13,87	107,76
Prix au février 1984 Price as at February 1984	29,26	216,23
Evolution (X) 28.5.1984/15.12.78		

+111,-X



**PRESSE-MEDELSELE • MITTEILUNG AN DIE PRESSE • PRESS-RELEASE • INFORMATION A LA PRESSE  
ΑΝΑΚΟΙΝΩΣΗ ΓΙΑ ΤΟΝ ΤΥΠΟ • INFORMAZIONE ALLA STAMPA • MEDEDELING AAN DE PERS**

4417.411

Brussels, 21 June 1984.

COMMISSION OIL BULLETIN NO.247

The weekly oil bulletin, published by the Commission, gives the latest available data relating to price development in the Member States and for the Community as a whole. The Commission considers that the bulletin contributes to improved transparency as regards Community oil markets.

The figures given in each bulletin follow the development over time of certain prices. They permit a comparison at any instant in time between Member States but such a comparison may not be representative of international price relationships over a longer period. Moreover, it is evident that such a comparison is limited even if fluctuations in exchange rates are ignored; although valid for identical products sold to the same categories of consumer no account is taken of market structures, (the product categories reported are not in every case representative of the bulk of sales for each product in each country), quality specifications and methods of distribution which are unique to each Member State. In this context the essentially indicative nature of some elements of table 2 is emphasised.

A detailed methodology will be appended to the bulletin published at the beginning of each quarter.

The Commission Oil Bulletin is freely available on demand (telephone 235.35.75).

Weekly summary :

Evolution (in %) of Community indications for :

- |  |          |
|--|----------|
| 1 <sup>o</sup> ) Weighted average pre-tax prices<br>for principal oil products at 4.6.1984 (Table 2) |          |
| compared with 15.12.1978   | +72%     |
| compared with previous week  | + 2%     |
| 2 <sup>o</sup> ) Weighted average CIF cost of crude<br>oil supplies for March, 1984 (Table 3)        |          |
| compared with 15.12.1978   | +112,60% |
- (1) The CIF supply cost is derived from monthly declarations by Member States (see Oil Bulletin 207 for methodology).

Niveaux indicatifs hebdomadaires des prix hors taxes à la consommation en monnaies nationales  
Weekly indicative consumer price levels in national currencies - Tax and duties excluded (1)

(Tableau hebdomadaire)

Prix au : 4.6.1984  
Prices as at

TABLEAU 1

	Essence super Premium gasoline 1000 L (2)	Essence normale Regular gasoline 1000 L (2)	Gasoil moteur Automotive gasoil 1000 L (2)	Gasoil chauffage Heating gasoil 1000 L (3)	Fuel Residual NTS Residual Fuel Oil NSC Tonne (4)
Belgique (FB)*	15.840	15.200	14.878	13.487	11.336
Danemark (DK)	2.875	2.760	2.715	2.685	1.915
Deutschland (DM)	709	650	723	657	526
Ellas (DR)	30.988	28.988	20.193	20.193	15.492
France (FF)	2.132,60	2.002,70	2.171,40	2.070,50	1.689
Irlande (Irish £)	270,82	265,92	278,39	226,37	175,51
Italia (Lire)	434.130	392.460	443.650	410.020	334.350
Luxembourg (FL)	14.820	14.200	13.980	13.420	10.986
Nederland (Fl)	804	779	816	754	633
United Kingdom (£)	182,30	174,60	187,00	211,90	151,10

(1) Prix le plus souvent pratiqués et ainsi représentatifs, selon les meilleures estimations des experts des Etats Membres, du marché pétrolier de chaque Etat Membre.  
Prices most frequently charged and thus representative, of the oil market in each Member State, according to the best estimates of the national experts.

(2) Prix à la pompe/Pump price.

(3) Prix pour livraison de 2.000 à 5.000 litres/Prices for deliveries of 2,000 to 5,000 litres.

(4) Prix pour livraisons inférieures à 2000 tonnes par mois ou inférieures à 24.000 tonnes par an. Prix franco consommateurs.  
Prices for offtakes of less than 2,000 tons per month or less than 24,000 tons per year. Delivered Consumer Prices.

\* Prix maximaux/Maximum prices.

Niveaux indicatifs hebdomadaires des prix hors taxes à la consommation en dollars courants  
Weekly indicative consumer price levels in current dollars. Tax and duties excluded (1)

(Tableau hebdomadaire)

Prix au : 4.6.84  
Prices as at

TABLEAU 2

	Essence super Premium gasoline 1000 L (2)	Essence normale Regular gasoline 1000 L (2)	Gasoil moteur automotive gasoil 1000 L (2)	Gasoil chauffage Heating gasoil 1000 L (3)	Fuel Residual NTS Residual Fuel Oil NSC Tonne (4)
Belgique *	290,32	278,59	272,69	247,19	207,77
Danemark	292,76	281,05	276,47	253,05	195,01
Deutschland	265,34	243,26	270,58	245,88	196,85
Ellas	290,93	272,16	189,58	189,58	145,45
France	259,34	243,54	264,06	251,79	205,39
Irlande	310,35	304,74	319,03	259,42	201,13
Italia	261,99	236,84	267,74	247,44	201,78
Luxembourg	271,62	260,26	256,23	245,96	201,35
Nederland	266,71	258,41	270,69	250,12	209,98
United Kingdom	256,11	245,29	262,71	297,69	212,27
C.E.E./E.E.C.					
a) Moyenne/Average (5)	263,44	246,26	266,61	253,04	201,56
b) Variation moyenne % Average variation % 4.6.84 /15.12.78	+37%	+34%	+53%	+75%	+111%
c) Variation moyenne sur les 5 produits Average variation for all 5 products 4.6.84 /15.12.78			+72%		

(1) Prix les plus souvent pratiqués et ainsi représentatifs, selon les meilleures estimations des experts des Etats Membres, du marché pétrolier de chaque Etat Membre.  
Prices most frequently charged and thus representative of the oil market in each Member State, according to the best estimates of the national experts.

(2) Prix à la pompe/ Pump price

(3) Prix pour livraison de 2.000 à 5.000 litres./ Prices for deliveries of 2,000 to 5,000 litres.

(4) Prix pour livraison inférieure à 2000 tonnes par mois ou inférieure à 24.000 tonnes par an. Prix franco consommateurs.  
Prices for offtakes of less than 2,000 tons per month or less than 24,000 tons per year. Delivered Consumer Prices.

(5) La moyenne résulte d'une pondération des quantités consommées de chaque produit concerné au cours de l'année 1982  
The result of weighting the prices of the products concerned by the quantities consumed during the period 1982

\* Prix maximaux/Maximum prices.

TABLEAU 3

Coût CAF d'approvisionnement en brut de la Communauté.  
CIF: Cost of Community crude oil supplies.

	S/B	S/T
Prix au : 15.12.78	13,87	107,76
Price as at		
Prix au mars 1984		
Price as at March 1984	29,49	+217,93
Evolution (%) 4.6.1984/15.12.78		+112,60%



**PRESSE-MEDELSELE • MITTEILUNG AN DIE PRESSE • PRESS-RELEASE • INFORMATION A LA PRESSE  
 ΑΝΑΚΟΙΝΩΣΗ ΓΙΑ ΤΟΝ ΤΥΠΟ • INFORMAZIONE ALLA STAMPA • MEDEDELING AAN DE PERS**

Brussels, 28th June 1984.

COMMISSION OIL BULLETIN NO.248

4417.411

The weekly oil bulletin, published by the Commission, gives the latest available data relating to price development in the Member States and for the Community as a whole. The Commission considers that the bulletin contributes to improved transparency as regards Community oil markets.

The figures given in each bulletin follow the development over time of certain prices. They permit a comparison at any instant in time between Member States but such a comparison may not be representative of international price relationships over a longer period. Moreover, it is evident that such a comparison is limited even if fluctuations in exchange rates are ignored; although valid for identical products sold to the same categories of consumer no account is taken of market structures, (the product categories reported are not in every case representative of the bulk of sales for each product in each country), quality specifications and methods of distribution which are unique to each Member State. In this context the essentially indicative nature of some elements of table 2 is emphasised.

A detailed methodology will be appended to the bulletin published at the beginning of each quarter.

The Commission Oil Bulletin is freely available on demand (telephone 235.35.75).

Weekly summary :	Evolution (in %) of Community indications for :
------------------	---

1 <sup>o</sup> ) Weighted average pre-tax prices for principal oil products at 18.6.84 (Table 2)	+66%
compared with 15.12.1978	
compared with previous week	-3,10%

2 <sup>o</sup> ) Weighted average CIF cost of crude oil supplies for March 1984 (Table 3)	+112,60%
compared with 15.12.1978	

(1) The CIF supply cost is derived from monthly declarations by Member States (see Oil Bulletin 207 for methodology).

Niveaux indicatifs hebdomadaires des prix hors taxes à la consommation en monnaies nationales  
Weekly indicative consumer price levels in national currencies. Tax and duties excluded (1)

(Tableau hebdomadaire)

Prix au : 18.6.1984  
Prices as at : 18.6.1984

TABLEAU 1  
TABLE

	Essence super Premium gasoline 1000 L (2)	Essence normale Regular gasoline 1000 L (2)	Gasoil moteur Automotive gasoil 1000 L (2)	Gasoil chauffage Heating gasoil 1000 L (3)	Fuel Residuel HTS Residual Fuel Oil HSC Tonne (4)
Belgique (FB)*	15.520	14.880	14.302	12.906	10.721
Danmark (DK)	2.915	2.800	2.755	2.525	2.005
Deutschland (DM)	705	647	709	634	526
Ellas (DR)	30.988	28.988	20.193	20.193	15.492
France (FF)	2.173,30	2.035,00	2.186,80	2.088,20	1.689
Irlande (Irish £)	271,14	266,10	277,65	225,45	177,04
Italia (Lire)	434.130	392.460	443.650	410.402	334.175
Luxembourg (FL)	14.820	14.200	13.980	13.420	10.986
Nederland (FL)	789	762	781	719	612
United Kingdom (£)	185,20	176,00	187,00	207,10	150,40

(1) Prix le plus souvent pratiqués et ainsi représentatifs, selon les meilleures estimations des experts des Etats Membres, du marché pétrolier de chaque Etat Membre.

Prices most frequently charged and thus representative, of the oil market in each Member State, according to the best estimates of the national experts.

(2) Prix à la pompe/Pump price.

(3) Prix pour livraison de 2.000 à 5.000 litres/Prices for deliveries of 2,000 to 5,000 litres.

(4) Prix pour livraisons inférieures à 2000 tonnes par mois ou inférieures à 24.000 tonnes par an. Prix franco consommateurs. Prices for offtakes of less than 2,000 tons per month or less than 24,000 tons per year. Delivered Consumer Prices.

\* Prix maximaux/Maximum prices.

Niveaux indicatifs hebdomadaires des prix hors taxes à la consommation en dollars courants  
Weekly indicative consumer price levels in current dollars. Tax and duties excluded (1)

(Tableau hebdomadaire)

Prix au : 18.6.1984  
Prices as at : 18.6.1984

TABLEAU 2  
TABLE

	Essence super Premium gasoline 1000 L (2)	Essence normale Regular gasoline 1000 L (2)	Gasoil moteur automotive gasoil 1000 L (2)	Gasoil chauffage Heating gasoil 1000 L (3)	Fuel Residuel HTS Residual Fuel Oil HSC Tonne (4)
Belgique *	277,25	265,82	255,49	230,55	191,52
Danmark	289,25	277,84	273,38	250,55	198,95
Deutschland	256,45	235,35	257,91	230,62	191,34
Ellas	284,16	265,82	185,17	185,17	142,06
France	257,22	240,85	258,82	247,15	199,90
Irlande	301,66	296,06	308,91	250,83	196,97
Italia	255,14	230,65	260,74	241,20	196,40
Luxembourg	264,74	253,67	249,74	239,73	196,25
Nederland	254,84	246,12	252,26	232,23	197,67
United Kingdom	255,02	242,35	257,50	285,18	207,10
C.E.E./E.E.C.					
a) Moyenne/Average (5)	258,38	239,86	257,85	242,30	195,72
b) Variation moyenne % Average variation % 18.6.84 /15.12.78	+34%	+31%	+48%	+67%	+105%
c) Variation moyenne sur les 5 produits Average variation for all 5 products 18.6.84 /15.12.78			+66%		

(1) Prix les plus souvent pratiqués et ainsi représentatifs, selon les meilleures estimations des experts des Etats Membres, du marché pétrolier de chaque Etat Membre.

Prices most frequently charged and thus representative of the oil market in each Member State, according to the best estimates of the national experts.

(2) Prix à la pompe/ Pump price

(3) Prix pour livraison de 2.000 à 5.000 litres./ Prices for deliveries of 2,000 to 5,000 litres.

(4) Prix pour livraison inférieure à 2000 tonnes par mois ou inférieure à 24.000 tonnes par an. Prix franco consommateurs. Prices for offtakes of less than 2,000 tons per month or less than 24,000 tons per year. Delivered Consumer Prices.

(5) La moyenne résulte d'une pondération des quantités consommées de chaque produit concerné au cours de l'année 1982. The result of weighting the prices of the products concerned by the quantities consumed during the period 1982

\* Prix maximaux/Maximum prices.

TABLEAU 3  
TABLE

Coût CAF d'approvisionnement en brut de la Communauté.  
CIF Cost of Community crude oil supplies.

	S/B	S/T
Prix au 15.12.78 Price as at	13,87	107,76
Prix au mois de mars 1984 Price as at March 1984	29,49	+217,93
Evolution (X) 18.6.84 /15.12.78	+112,60%	

Prix de vente des produits pétroliers en monnaies nationales  
Selling Prices of Petroleum Products in National currencies.

(Tableau mensuel)

Prix moyens pratiqués au  
 Average of prices ruling as at 15.4.1984

TABLEAU  
 TABLE 4

	Essence super Premium Gasoline 1000 L (1)			Essence Normale Regular Gasoline 1000 L (1)			Gasoil Moteur Automotive Gasoil 1000 L (1)		
	Taxes	Hors taxes Without Taxes	Prix de vente Selling Price	Taxes	Hors taxes Without Taxes	Prix de vente Selling Price	Taxes	Hors taxes Without taxes	Prix de ve Selling Pr
Belgique (FB)	17.490	13.960	31.450	17.330	13.320	30.650	10.100	14.150	24.250
Danmark (KD)	3.357,79	2.702,21	6.060	3.332,54	2.587,46	5.920	1.043,44	2.746,56	3.790
Deutschland (DM)	676,60	682	1.358,60	668,90	629	1.297,90	600,10	688	1.288,10
Ellas (DR)	26.011,72	30.988,28	57.000	24.011,43	28.988,57	53.000	7.806,67	20.193,33	28.000
France (FF)	2.839	2.141	4.980	2.667,30	2.002,70	4.670	1.700,20	2.179,80	3.880
Ireland (I.£)	352,89	262,61	615,50	351,88	258,22	610,10	275,51	277,49	553,00
Italia (Lire)	845.870	434.130	1.280.000	837.540	392.460	1.230.000	190.350	443.650	634.000
(1) Luxembourg (FL)	11.790	14.510	26.300	11.660	13.740	25.400	6.530	14.370	20.900
Nederland (FL)	1.012	781	1.793	1.007	754	1.761	389	798	1.187
U. Kingdom (£)	224,20	179,20	403,40	223,00	171,10	394,10	194,30	185,60	379,90

(1) RECTIFICATIF BULLETIN NO. 244: POUR LES PRIX DES PRODUITS A LA DATE DU 15.3.1984 PRENDRE CEUX DU 15.4.1984

	Gasoil Chauffage Heating Gasoil 1000 L (3)			Fuel Lourd HTS Heavy Fuel HSC Tonne (3)		
	Taxes	Hors taxes Without Taxes	Prix de vente Selling Price	Taxes	Hors taxes Without Taxes	Prix de vente Selling Price
Belgique (FB)	2.179	12.821	15.000	-	10.709	10.709
Danmark (KD)	992,95	2.517,05	3.510	410	1.965	2.375
Deutschland (DM)	107	633	740	15	525,70	540,70
Ellas (DR)	7.806,67	20.193,33	28.000	3.508	15.492	19.000
France (FF)	599,20	2.079,80	2.679	59	1.603	1.662
Ireland (I.£)	29,67	225,80	255,47	10,14	178,03	188,17
Italia (Lire)	187.592	425.293	612.885	1.000	323.506	324.506
(1) Luxembourg (FL)	830	13.760	14.590	100	10.592	10.692
Nederland (FL)	180	735	915	11,20	610	621,20
U. Kingdom (£)	7,70	192,70	200,40	7,93	142,93	150,86

Taux de change au 16.4.1984

1\$ = 53,8875FB - 9,6765 CD -  
 2,6355 DM - 104,56 DR -  
 8,1140 FF - 0,8602 IRL £ -  
 1.630,50 Lires - 2,9743 FL -  
 0,7021 UK £

1écu = 46,7769 FB - 8,19326 CD -  
 2,23152 DM - 88,5328 DR -  
 6,87027 FF - 0,728359 IRL £ -  
 1.380,57 Lire - 2,51839 FL -  
 0,594522 UK £

(1) Prix à la pompe/Pump price

(2) Livraisons de 2000 à 5000 L./Deliveries of 2,000 to 5,000 L.

(3) Livraisons de moins 2000 tonnes par mois et de moins de 24.000 tonnes par an  
 Offtakes of less than 2,000 tons per month or less than 24,000 tons per year.







**PRESSE-MEDDELELSE • MITTEILUNG AN DIE PRESSE • PRESS-RELEASE • INFORMATION A LA PRESSE  
ΑΝΑΚΟΙΝΩΣΗ ΓΙΑ ΤΟΝ ΤΥΠΟ • INFORMAZIONE ALLA STAMPA • MEDEDELING AAN DE PERS**

4417.411

Brussels, 5 July 1984.

COMMISSION OIL BULLETIN NO.249

The weekly oil bulletin, published by the Commission, gives the latest available data relating to price development in the Member States and for the Community as a whole. The Commission considers that the bulletin contributes to improved transparency as regards Community oil markets.

The figures given in each bulletin follow the development over time of certain prices. They permit a comparison at any instant in time between Member States but such a comparison may not be representative of international price relationships over a longer period. Moreover, it is evident that such a comparison is limited even if fluctuations in exchange rates are ignored; although valid for identical products sold to the same categories of consumer no account is taken of market structures, (the product categories reported are not in every case representative of the bulk of sales for each product in each country), quality specifications and methods of distribution which are unique to each Member State. In this context the essentially indicative nature of some elements of table 2 is emphasised.

A detailed methodology will be appended to the bulletin published at the beginning of each quarter.

The Commission Oil Bulletin is freely available on demand (telephone 235.35.75).

Weekly summary :

Evolution (in %) of Community indications for :

1<sup>o</sup>) Weighted average pre-tax prices  
for principal oil products at

(Table 2)

compared with 15.12.1978

+63%

compared with previous week

-2,10%

2<sup>o</sup>) Weighted average CIF cost of crude  
oil supplies for March 1984 (Table 3)

compared with 15.12.1978

+112,60%

(1) The CIF supply cost is derived from monthly declarations by Member States (see Oil Bulletin 207 for methodology).

Niveaux indicatifs hebdomadaires des prix hors taxes à la consommation en monnaies nationales  
Weekly indicative consumer price levels in national currencies. Tax and duties excluded (1)

(Tableau hebdomadaire)

Prix au : 25.6.1984  
Prices as at : 25.6.1984

TABLEAU 1

	Essence super Premium gasoline 1000 L (2)	Essence normale Regular gasoline 1000 L (2)	Gasoil moteur Automotive gasoil 1000 L (2)	Gasoil chauffage Heating gasoil 1000 L (3)	Fuel Residual HTS Residual Fuel Oil NSC Tonne (4)
Belgique (FB)*	15.520	14.880	14.302	12.906	10.721
Danmark (DK)	2.875	2.760	2.755	2.525	2.005
Deutschland (DM)	713	655	701	627	526
Ellas (DR)	30.988	28.988	20.193	20.193	15.492
France (FF)	2.173,30	2.035,00	2.186,80	2.088,20	1.639
Irlande (Irish £)	274,39	268,70	278,31	226,11	181,54
Italia (Lire)	434.130	392.460	443.650	410.402	334.175
Luxembourg (FL)	14.820	14.200	13.980	13.420	10.986
Néerland (FL)	789	762	781	719	612
United Kingdom (£)	182,30	174,60	187,00	207,00	150,30

(1) Prix le plus souvent pratiqués et ainsi représentatifs, selon les meilleures estimations des experts des Etats Membres, du marché pétrolier de chaque Etat Membre.  
Prices most frequently charged and thus representative, of the oil market in each Member State, according to the best estimates of the national experts.

(2) Prix à la pompe/Pump price.

(3) Prix pour livraison de 2.000 à 5.000 litres/Prices for deliveries of 2,000 to 5,000 litres.

(4) Prix pour livraisons inférieures à 2000 tonnes par mois ou inférieures à 24.000 tonnes par an. Prix franco consommateurs.  
Prices for offtakes of less than 2,000 tons per month or less than 24,000 tons per year. Delivered Consumer Prices.

\*: Prix maximaux/Maximum prices.

Niveaux indicatifs hebdomadaires des prix hors taxes à la consommation en dollars courants  
Weekly indicative consumer price levels in current dollars. Tax and duties excluded (1)

(Tableau hebdomadaire)

Prix au : 25.6.1984  
Prices as at : 25.6.1984

TABLEAU 2

	Essence super Premium gasoline 1000 L (2)	Essence normale Regular gasoline 1000 L (2)	Gasoil moteur automotive gasoil 1000 L (2)	Gasoil chauffage Heating gasoil 1000 L (3)	Fuel Residual HTS Residual Fuel Oil NSC Tonne (4)
Belgique *	271,83	260,62	250,50	226,05	187,78
Danmark	279,53	268,35	267,86	245,50	194,94
Deutschland	254,00	233,34	249,73	223,37	187,38
Ellas	280,48	262,38	182,77	182,77	140,22
France	252,21	236,16	253,77	242,33	190,20
Irlande	299,38	293,18	303,66	246,71	198,07
Italia	251,30	227,18	256,81	237,56	193,44
Luxembourg	259,57	248,71	244,86	235,05	192,42
Nederland	249,60	241,06	247,07	227,45	193,60
United Kingdom	246,51	236,10	252,87	279,91	203,24
C.E.E./E.E.C.					
a) Moyenne/Average (5)	253,14	236,35	252,79	236,72	191,25
b) Variation moyenne % Average variation % 25.6.84 /15.12.78	+31%	+29%	+45%	+64%	+101%
c) Variation moyenne sur les 5 produits Average variation for all 5 products 25.6.84 /15.12.78			+61%		

(1) Prix les plus souvent pratiqués et ainsi représentatifs, selon les meilleures estimations des experts des Etats Membres, du marché pétrolier de chaque Etat Membre.  
Prices most frequently charged and thus representative of the oil market in each Member State, according to the best estimates of the national experts.

2) Prix à la pompe/ Pump price

3) Prix pour livraison de 2.000 à 5.000 litres./ Prices for deliveries of 2,000 to 5,000 litres.

4) Prix pour livraison inférieure à 2000 tonnes par mois ou inférieure à 24.000 tonnes par an. Prix franco consommateurs.

Prices for offtakes of less than 2,000 tons per month or less than 24,000 tons per year. Delivered Consumer Prices.

5) La moyenne résulte d'une pondération des quantités consommées de chaque produit concerné au cours de l'année 1982.  
The result of weighting the prices of the products concerned by the quantities consumed during the period 1982

\*: Prix maximaux/Maximum prices.

TABLEAU 3

Coût CAF d'approvisionnement en brut de la Communauté.  
CIF Cost of Community crude oil supplies.

	S/B	S/T
Prix au Price as at 15.12.78	13,87	187,76
Prix au mois de mars 1984 Price as at March 1984	29,49	297,93
Evolution (%) 25.6.84 /15.12.78		+112,60%



**PRESSE-MEDELSELE • MITTEILUNG AN DIE PRESSE • PRESS-RELEASE • INFORMATION A LA PRESSE  
ΑΝΑΚΟΙΝΩΣΗ ΓΙΑ ΤΟΝ ΤΥΠΟ • INFORMAZIONE ALLA STAMPA • MEDEDELING AAN DE PERS**

4417.411

Brussels, 12 July 1984.

COMMISSION OIL BULLETIN NO.250

The weekly oil bulletin, published by the Commission, gives the latest available data relating to price development in the Member States and for the Community as a whole. The Commission considers that the bulletin contributes to improved transparency as regards Community oil markets.

The figures given in each bulletin follow the development over time of certain prices. They permit a comparison at any instant in time between Member States but such a comparison may not be representative of international price relationships over a longer period. Moreover, it is evident that such a comparison is limited even if fluctuations in exchange rates are ignored; although valid for identical products sold to the same categories of consumer no account is taken of market structures, (the product categories reported are not in every case representative of the bulk of sales for each product in each country), quality specifications and methods of distribution which are unique to each Member State. In this context the essentially indicative nature of some elements of table 2 is emphasised.

A detailed methodology will be appended to the bulletin published at the beginning of each quarter.

The Commission Oil Bulletin is freely available on demand (telephone 235.35.75).

Weekly summary :

Evolution (in %) of Community indications for :

1<sup>o</sup>) Weighted average pre-tax prices  
for principal oil products at 2.7.84 (Table 2)

compared with 15.12.1978

+62%

compared with previous week

-0,30%

2<sup>o</sup>) Weighted average CIF cost of crude  
oil supplies for March 1984 (Table 3)

compared with 15.12.1978

+112,60%

(1) The CIF supply cost is derived from monthly declarations by Member States (see Oil Bulletin 207 for methodology).

Niveaux indicatifs hebdomadaires des prix hors taxes à la consommation en monnaies nationales  
Weekly indicative consumer price levels in national currencies. Tax and duties excluded (1)

(Tableau hebdomadaire)

Prix au  
Prices as at : 2.7.1984

TABLEAU 1  
TABLE

	Essence super Premium gasoline 1000 L (2)	Essence normale Regular gasoline 1000 L (2)	Gasoil moteur Automotive gasoil 1000 L (2)	Gasoil chauffage Heating gasoil 1000 L (3)	Fuel Residual HTS Residual Fuel Oil HSC Tonne (4)
Belgique (FB)*	15.520	14.880	14.054	12.658	10.965
Danmark (DK)	2.875	2.760	2.675	2.445	1.945
Deutschland (DM)	700	642	695	621	526
Ellas (DR)	30.988	28.988	20.193	20.193	15.492
France (FF)	2.173,30	2.035,00	2.186,80	2.088,20	1.639
Irlande (Irish £)	274,39	268,70	278,31	230,41	193,98
Italia (Lire)	434.130	392.460	443.650	406.883	329.144
Luxembourg (FL)	14.820	14.200	13.980	13.420	10.986
Nederland (FL)	789	762	781	719	611
United Kingdom (£)	182,30	174,60	187,00	206,80	150,20

(1) Prix le plus souvent pratiqués et ainsi représentatifs, selon les meilleures estimations des experts des Etats Membres, du marché pétrolier de chaque Etat Membre.  
Prices most frequently changed and thus representative, of the oil market in each Member State, according to the best estimates of the national experts.

(2) Prix à la pompe/Pump price.

(3) Prix pour livraison de 2.000 à 5.000 litres/Prices for deliveries of 2,000 to 5,000 litres.

(4) Prix pour livraisons inférieures à 2000 tonnes par mois ou inférieures à 24.000 tonnes par an. Prix franco consommateurs.  
Prices for offtakes of less than 2,000 tons per month or less than 24,000 tons per year. Delivered Consumer Prices.

\*a) Prix maximaux/Maximum prices.

Niveaux indicatifs hebdomadaires des prix hors taxes à la consommation en dollars courants  
Weekly indicative consumer price levels in current dollars. Tax and duties excluded (1)

(Tableau hebdomadaire)

Prix au  
Prices as at : 2.7.1984

TABLEAU 2  
TABLE

	Essence super Premium gasoline 1000 L (2)	Essence normale Regular gasoline 1000 L (2)	Gasoil moteur automotive gasoil 1000 L (2)	Gasoil chauffage Heating gasoil 1000 L (3)	Fuel Residual HTS Residual Fuel Oil HSC Tonne (4)
Belgique *	272,80	261,55	247,03	222,49	192,73
Danmark	280,35	269,14	260,85	238,42	189,66
Deutschland	250,33	229,59	248,54	222,08	188,11
Ellas	280,54	262,43	182,81	182,81	140,25
France	253,27	237,15	254,84	243,35	191,00
Irlande	300,31	294,08	304,60	252,17	212,30
Italia	252,14	227,94	257,67	236,32	191,17
Luxembourg	260,49	249,59	245,73	235,88	193,10
Nederland	250,28	241,71	247,74	228,07	193,81
United Kingdom	245,65	235,28	251,99	278,67	202,40
C.E.E./E.E.C.					
a) Moyenne/Average (5)	252,72	234,38	251,95	235,81	191,04
b) Variation moyenne % Average variation % 2.7.84 /15.12.78	+31%	+28%	+45%	+63%	+100%
c) Variation moyenne sur les 5 produits Average variation for all 5 products 2.7.84 /15.12.78			+62%		

(1) Prix les plus souvent pratiqués et ainsi représentatifs, selon les meilleures estimations des experts des Etats Membres, du marché pétrolier de chaque Etat Membre.  
Prices most frequently charged and thus representative of the oil market in each Member State, according to the best estimates of the national experts.

(2) Prix à la pompe/ Pump price

(3) Prix pour livraison de 2.000 à 5.000 litres./ Prices for deliveries of 2,000 to 5,000 litres.

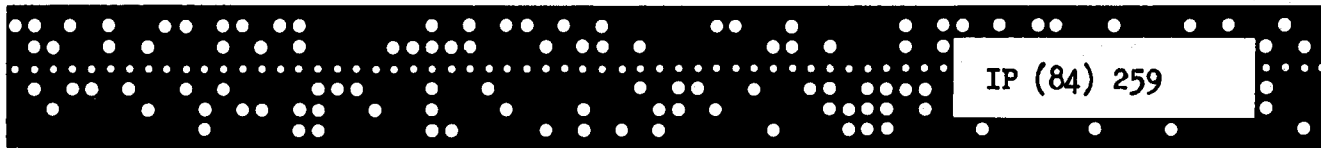
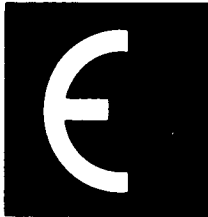
(4) Prix pour livraison inférieure à 2000 tonnes par mois ou inférieure à 24.000 tonnes par an. Prix franco consommateurs.  
Prices for offtakes of less than 2,000 tons per month or less than 24,000 tons per year. Delivered Consumer Prices.

(5) La moyenne résulte d'une pondération des quantités consommées de chaque produit concerné au cours de l'année 1982  
The result of weighting the prices of the products concerned by the quantities consumed during the period 1982

TABLEAU 3  
TABLE

Coût CAF d'approvisionnement en brut de la Communauté.  
CIF Cost of Community crude oil supplies.

	\$/B	\$/T
Prix au Price as at 15.12.78	13,87	107,76
Prix au mois de mars 1984 Price as at March 1984	29,49	+217,93
Evolution (X) 2.7.84 /15.12.78		+112,60%



**PRESSE-MEDELSELE • MITTEILUNG AN DIE PRESSE • PRESS-RELEASE • INFORMATION A LA PRESSE  
 ΑΝΑΚΟΙΝΩΣΗ ΓΙΑ ΤΟΝ ΤΥΠΟ • INFORMAZIONE ALLA STAMPA • MEDEDELING AAN DE PERS**

4417.411

Brussels, 19th July 1984.

COMMISSION OIL BULLETIN NO.251

The weekly oil bulletin, published by the Commission, gives the latest available data relating to price development in the Member States and for the Community as a whole. The Commission considers that the bulletin contributes to improved transparency as regards Community oil markets.

The figures given in each bulletin follow the development over time of certain prices. They permit a comparison at any instant in time between Member States but such a comparison may not be representative of international price relationships over a longer period. Moreover, it is evident that such a comparison is limited even if fluctuations in exchange rates are ignored; although valid for identical products sold to the same categories of consumer no account is taken of market structures, (the product categories reported are not in every case representative of the bulk of sales for each product in each country), quality specifications and methods of distribution which are unique to each Member State. In this context the essentially indicative nature of some elements of table 2 is emphasised.

A detailed methodology will be appended to the bulletin published at the beginning of each quarter.

The Commission Oil Bulletin is freely available on demand (telephone 235.35.75).

Weekly summary :

Evolution (in %) of Community indications for :

<p>1<sup>o</sup>) Weighted average pre-tax prices                  for principal oil products at 9.7.84 (Table 2)                  compared with 15.12.1978                  compared with previous week</p>	<p>+59%</p> <hr/> <p>-2,10%</p>
<p>2<sup>o</sup>) Weighted average CIF cost of crude                  oil supplies for April 1984 (Table 3)                  compared with 15.12.1978</p>	<p>+113,80%</p>

(1) - The CIF supply cost is derived from monthly declarations by Member States (see Oil Bulletin 207 for methodology).

Niveaux indicatifs hebdomadaires des prix hors taxes à la consommation en monnaies nationales  
Weekly indicative consumer price levels in national currencies. Tax and duties excluded (1)

(Tableau hebdomadaire)

Prix au : 9.7.1984  
Prices as at

TABLEAU 1  
TABLE

	Essence super Premium gasoline 1000 L (2)	Essence normale Regular gasoline 1000 L (2)	Gasoil moteur Automotive gasoil 1000 L (2)	Gasoil chauffage Heating gasoil 1000 L (3)	Fuel Residual HTS Residual Fuel Oil HSC Tonne (4)
Belgique (FB)*	15.520	14.880	14.358	12.966	10.965
Danmark (DK)	2.875	2.760	2.675	2.445	1.945
Deutschland (DM)	679	620	679	624	525
Ellas (DR)	30.988	28.988	20.193	20.193	15.492
France (FF)	2.173,30	2.035,00	2.186,80	2.088,20	1.639
Irlande (Irish £)	274,39	268,70	278,31	230,41	193,98
Italia (Lire)	434.130	392.460	443.650	406.535	328.489
Luxembourg (FL)	14.820	14.200	13.980	13.420	10.986
Nederland (FL)	759	730	777	719	604
United Kingdom (£)	182,30	174,60	187,00	206,70	149,10

(1) Prix le plus souvent pratiqués et ainsi représentatifs, selon les meilleures estimations des experts des Etats Membres, du marché pétrolier de chaque Etat Membre.  
Prices most frequently charged and thus representative, of the oil market in each Member State, according to the best estimates of the national experts.

(2) Prix à la pompe/Pump price.

(3) Prix pour livraison de 2.000 à 5.000 litres/Prices for deliveries of 2,000 to 5,000 litres.

(4) Prix pour livraisons inférieures à 2000 tonnes par mois ou inférieures à 24.000 tonnes par an. Prix franco consommateurs.  
Prices for offtakes of less than 2,000 tons per month or less than 24,000 tons per year. Delivered Consumer Prices.

\* Prix maximaux/Maximum prices.

Niveaux indicatifs hebdomadaires des prix hors taxes à la consommation en dollars courants  
Weekly indicative consumer price levels in current dollars. Tax and duties excluded (1)

(Tableau hebdomadaire)

Prix au : 9.7.1984  
Prices as at

TABLEAU 2  
TABLE

	Essence super Premium gasoline 1000 L (2)	Essence normale Regular gasoline 1000 L (2)	Gasoil moteur Automotive gasoil 1000 L (2)	Gasoil chauffage Heating gasoil 1000 L (3)	Fuel Residual HTS Residual Fuel Oil HSC Tonne (4)
Belgique *	268,80	257,71	248,67	224,56	189,91
Danmark	276,34	265,29	257,12	235,01	186,95
Deutschland	238,83	218,07	238,83	219,48	184,66
Ellas	277,19	259,30	180,63	180,63	138,58
France	249,08	233,23	250,63	239,33	187,85
Irlande	295,39	289,26	299,61	248,04	208,82
Italia	249,53	225,58	255,00	233,67	188,81
Luxembourg	256,67	245,94	242,13	232,43	190,27
Nederland	236,59	227,55	242,20	224,12	188,27
United Kingdom	238,73	228,65	244,89	270,69	195,25
C.E.E./E.E.C.					
a) Moyenne/Average (5)	246,29	225,50	246,47	232,40	187,37
b) Variation moyenne % Average variation % 9.7.1984/15.12.78	+28%	+23%	+42%	+61%	+97%
c) Variation moyenne sur les 5 produits Average variation for all 5 products 9.7.1984/15.12.78	+59%				

(1) Prix les plus souvent pratiqués et ainsi représentatifs, selon les meilleures estimations des experts des Etats Membres, du marché pétrolier de chaque Etat Membre.  
Prices most frequently charged and thus representative of the oil market in each Member State, according to the best estimates of the national experts.

(2) Prix à la pompe/ Pump price

(3) Prix pour livraison de 2.000 à 5.000 litres./ Prices for deliveries of 2,000 to 5,000 litres.

(4) Prix pour livraison inférieure à 2000 tonnes par mois ou inférieure à 24.000 tonnes par an. Prix franco consommateurs.  
Prices for offtakes of less than 2,000 tons per month or less than 24,000 tons per year. Delivered Consumer Prices.

(5) La moyenne résulte d'une pondération des quantités consommées de chaque produit concerné au cours de l'année 1982  
The result of weighting the prices of the products concerned by the quantities consumed during the period 1982

\* Prix maximaux/Maximum prices.

TABLEAU 3  
TABLE

Coût CAP d'approvisionnement en brut de la Communauté.  
CIF Cost of Community crude oil supplies.

	S/D	S/T
Prix au : 15.12.78 Price as at	13,87	107,76
Prix au mois d'avril 1984 Price as at April 1984	29,66	+219,19
Evolution (X) 9.7.84 /15.12.78	+113,80X	

**PRESSE-MEDELSELE • MITTEILUNG AN DIE PRESSE • PRESS-RELEASE • INFORMATION A LA PRESSE  
 ΑΝΑΚΟΙΝΩΣΗ ΓΙΑ ΤΟΝ ΤΥΠΟ • INFORMAZIONE ALLA STAMPA • MEDEDELING AAN DE PERS**

4417.411

Brussels, 26 July 1984.

COMMISSION OIL BULLETIN NO. 252

The weekly oil bulletin, published by the Commission, gives the latest available data relating to price development in the Member States and for the Community as a whole. The Commission considers that the bulletin contributes to improved transparency as regards Community oil markets.

The figures given in each bulletin follow the development over time of certain prices. They permit a comparison at any instant in time between Member States but such a comparison may not be representative of international price relationships over a longer period. Moreover, it is evident that such a comparison is limited even if fluctuations in exchange rates are ignored; although valid for identical products sold to the same categories of consumer no account is taken of market structures, (the product categories reported are not in every case representative of the bulk of sales for each product in each country), quality specifications and methods of distribution which are unique to each Member State. In this context the essentially indicative nature of some elements of table 2 is emphasised.

A detailed methodology will be appended to the bulletin published at the beginning of each quarter.

The Commission Oil Bulletin is freely available on demand (telephone 235.35.75).

Weekly summary :

Evolution (in %) of Community indications for :

- |   |                                    |
|---|------------------------------------|
| <p>1<sup>o</sup>) Weighted average pre-tax prices<br/>                 for principal oil products at 16/7/84 (Table 2)</p> <p>compared with 15.12.1978</p> <p>compared with previous week</p> | <p>+60%</p> <hr/> <p>+1%</p> <hr/> |
| <p>2<sup>o</sup>) Weighted average CIF cost of crude<br/>                 oil supplies for April 1984 (Table 3)</p> <p>compared with 15.12.1978</p>   | <p>+113,80%</p> <hr/>              |
- (1) The CIF supply cost is derived from monthly declarations by Member States (see Oil Bulletin for methodology).

Niveaux indicatifs hebdomadaires des prix hors taxes à la consommation en monnaies nationales  
Weekly indicative consumer price levels in national currencies, Tax and duties excluded (1)

(Tableau hebdomadaire)

Prix au : 16.7.1984  
Prices as at : 16.7.1984

TABLEAU 1  
TABLE

	Essence super Premium gasoline 1000 L (2)	Essence normale Regular gasoline 1000 L (2)	Gasoil moteur Automotive gasoil 1000 L (2)	Gasoil chauffage Heating gasoil 1000 L (3)	Fuel Residual HTS Residual Fuel Oil HSC Tonne (4)
Belgique (FB)*	15.520	14.880	14.358	12.966	10.965
Danmark (DK)	2.875	2.760	2.675	2.445	1.945
Deutschland (DM)	700	641	697	629	525
Ellas (DR)	30.988	28.988	28.193	20.193	15.492
France (FF)	2.190,00	2.051,70	2.195,20	2.089,10	1.639
Irlande (Irish £)	274,39	268,70	278,31	226,12	185,94
Italia (Lire)	434.130	392.460	427.130	406.118	326.910
Luxembourg (FL)	14.820	14.200	13.980	13.420	10.986
Nederland (FL)	772	739	777	719	621
United Kingdom (£)	181,30	173,70	187,00	204,10	147,20

(1) Prix le plus souvent pratiqués et ainsi représentatifs, selon les meilleures estimations des experts des Etats Membres, du marché pétrolier de chaque Etat Membre.

Prices most frequently changed and thus representative, of the oil market in each Member State, according to the best estimates of the national experts.

(2) Prix à la pompe/Pump price.

(3) Prix pour livraison de 2.000 à 5.000 litres/Prices for deliveries of 2,000 to 5,000 litres.

(4) Prix pour livraisons inférieures à 2000 tonnes par mois ou inférieures à 24.000 tonnes par an. Prix franco consommateurs. Prices for offtakes of less than 2,000 tons per month or less than 24,000 tons per year. Delivered Consumer Prices.

\* Prix maximaux/Maximum prices.

Niveaux indicatifs hebdomadaires des prix hors taxes à la consommation en dollars courants  
Weekly indicative consumer price levels in current dollars. Tax and duties excluded (1)

(Tableau hebdomadaire)

Prix au : 16.7.84  
Prices as at : 16.7.84

TABLEAU 2  
TABLE

	Essence super Premium gasoline 1000 L (2)	Essence normale Regular gasoline 1000 L (2)	Gasoil moteur automotive gasoil 1000 L (2)	Gasoil chauffage Heating gasoil 1000 L (3)	Fuel Residual HTS Residual Fuel Oil HSC Tonne (4)
Belgique *	271,38	260,19	251,06	226,72	191,73
Danmark	278,85	267,70	259,45	237,14	188,65
Deutschland	248,31	227,38	247,25	223,12	186,23
Ellas	277,86	259,93	181,07	181,07	138,91
France	253,04	237,06	253,64	241,38	189,38
Irlande	298,15	291,97	302,41	245,70	202,04
Italia	249,93	225,94	245,90	233,80	188,20
Luxembourg	259,14	248,30	244,45	234,66	192,10
Nederland	242,69	232,31	244,26	226,02	195,22
United Kingdom	240,06	230,00	247,61	270,25	194,91
C.E.E./E.E.C.					
a) Moyenne/Average (5)	249,95	231,74	247,94	234,47	187,93
b) Variation moyenne % Average variation % 16.7.84 /15.12.78	+30%	+26%	+43%	+62%	+97%
c) Variation moyenne sur les 5 produits Average variation for all 5 products 16.7.84 /15.12.78			+60%		

(1) Prix les plus souvent pratiqués et ainsi représentatifs, selon les meilleures estimations des experts des Etats Membres, du marché pétrolier de chaque Etat Membre.

Prices most frequently changed and thus representative of the oil market in each Member State, according to the best estimates of the national experts.

2) Prix à la pompe/ Pump price

3) Prix pour livraison de 2.000 à 5.000 litres./ Prices for deliveries of 2,000 to 5,000 litres.

4) Prix pour livraison inférieure à 2000 tonnes par mois ou inférieure à 24.000 tonnes par an. Prix franco consommateurs. Prices for offtakes of less than 2,000 tons per month or less than 24,000 tons per year. Delivered Consumer Prices.

5) La moyenne résulte d'une pondération des quantités consommées de chaque produit concerné au cours de l'année 1982. The result of weighting the prices of the products concerned by the quantities consumed during the period 1982

\* Prix maximaux/Maximum prices.

TABLEAU 3  
TABLE

Coût CAF d'approvisionnement en brut de la Communauté.  
CIF Cost of Community crude oil supplies.

	S/B	S/T
Prix au : 15.12.78 Price as at	13,87	107,76
Prix au mois d'avril 1984 Price as at April 1984	29,66	+219,19
Evolution (X) 16.7.84 /15.12.78		+113,80%



The Commission Oil Bulletin indicates :

1. Each week

- a) the indicative level of the most representative pre-tax consumer prices in each Member State and for the Community as a whole, for the following principal oil products and consumer types :
- premium and regular gasolines and automotive gasoil, at the pump;
  - heating gasoil, for deliveries of 2000 to 5000 litres;
  - residual fuel oil (maximum sulphur content) delivered prices for (small) consumers with offtakes of less than 2000 metric tons per month or less than 24.000 metric tons per year.

These price levels are indicated in national currencies (Table 1) and in current dollars (Table 2). In the latter case, the bulletin also indicates for the Community as a whole, the percentage change from mid December 1978 in the price of each product, and in the average for all the products considered, weighted according to their consumption during a given period.

- b) the cif cost level of Community crude oil supplies, calculated at the date of landing (Table 3). This is a weighted average which includes Community produced crude oils consumed within the producing member state and based on the actual structure of Community supply and the prices actually paid for the crude oils concerned (i.e. including both rebates and premia). Data for this calculation are obtained in the main, from the monthly declarations made under the Community system for the registration of crude oil imports.

2. Each Month

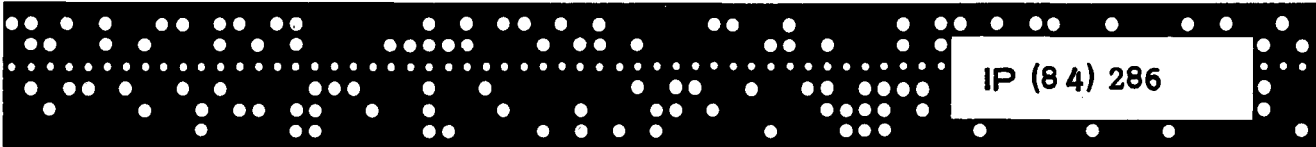
Average ruling prices (and the taxes and duties applicable) in national currency for principal oil products in each Member State as at the 15th of the previous month (Table 4). For the same date, this table also shows the rates of exchange against the dollar and the European Unit of Account to facilitate comparison, if desired, between Member States.

3. Each Quarter

The level in current dollars, and the indexed evolution since the first quarter of 1977 (Fourth quarter 1978 = 100), of the average CIF price of crude oil supply for each Member State and for the Community as a whole.

These average CIF prices, obtained through application of a 1976 Council Directive and a Commission implementing decision of 1977 on price transparency, are derived from oil company declarations received by the Commission via Member States; these data cover at least 85 % of crude oil imports and include local crude production. Average quarterly costs for each type of crude are weighted by the quantities actually supplied using the official market rates of exchange to obtain the most representative supply cost indications.

Finally table 6 shows, by Member Country and for the Community, the imported supply cost of the main petroleum products. This cost figure is also available in accordance with the requirements of Community documents on the transparency of the prices mentioned above.



IP (84) 286

**PRESSE-MEDELDELSE · MITTEILUNG AN DIE PRESSE · PRESS-RELEASE · INFORMATION A LA PRESSE**  
**ΑΝΑΚΟΙΝΩΣΗ ΓΙΑ ΤΟΝ ΤΥΠΟ · INFORMAZIONE ALLA STAMPA · MEDEDELING AAN DE PERS** August 1984.

COMMISSION OIL BULLETIN NO. 253

4417.411

The weekly oil bulletin, published by the Commission, gives the latest available data relating to price development in the Member States and for the Community as a whole. The Commission considers that the bulletin contributes to improved transparency as regards Community oil markets.

The figures given in each bulletin follow the development over time of certain prices. They permit a comparison at any instant in time between Member States but such a comparison may not be representative of international price relationships over a longer period. Moreover, it is evident that such a comparison is limited even if fluctuations in exchange rates are ignored; although valid for identical products sold to the same categories of consumer no account is taken of market structures, (the product categories reported are not in every case representative of the bulk of sales for each product in each country), quality specifications and methods of distribution which are unique to each Member State. In this context the essentially indicative nature of some elements of table 2 is emphasised.

A detailed methodology will be appended to the bulletin published at the beginning of each quarter.

The Commission Oil Bulletin is freely available on demand (telephone 235.35.75).

Weekly summary :

Evolution (in %) of Community indications for :

<p>1<sup>o</sup>) Weighted average pre-tax prices                  for principal oil products at 23.7.84 (Table 2)</p> <p style="padding-left: 40px;">compared with 15.12.1978</p> <p style="padding-left: 40px;">compared with previous week</p>	<p>_____</p> <p>_____</p> <p>_____</p>	<p>+58%</p> <hr/> <p>-1,75%</p> <hr/>
<p>2<sup>o</sup>) Weighted average CIF cost of crude                  oil supplies for April 1984 (Table 3)</p> <p style="padding-left: 40px;">compared with 15.12.1978</p>	<p>_____</p>	<p>_____</p> <p>+113,80%</p> <hr/>

(1) The CIF supply cost is derived from monthly declarations by Member States (see Oil Bulletin 252 for methodology).

Niveaux indicatifs hebdomadaires des prix hors taxes à la consommation en monnaies nationales  
Weekly indicative consumer price levels in national currencies. Tax and duties excluded (1)

(Tableau hebdomadaire)

Prix au : 23.7.1984  
Prices as at

TABLEAU 1  
TABLE

	Essence super Premium gasoline 1000 L (2)	Essence normale Regular gasoline 1000 L (2)	Gasol moteur Automotive gasoil 1000 L (2)	Gasol chauffage Heating gasoil 1000 L (3)	Fuel Residual: MTS Residual Fuel Oil MSC Tonne (4)
Belgique (FB)*	15.520	14.880	14.070	12.684	10.965
Danmark (DK)	2.670	2.555	2.675	2.445	1.945
Deutschland (DM)	689	631	688	626	525
Ellas (DR)	30.988	28.988	28.193	20.193	15.492
France (FF)	2.190,00	2.051,70	2.195,20	2.089,10	1.639
Irèland (Irish £)	274,39	268,70	278,31	226,12	181,77
Italia (Lire)	434.130	392.460	427.130	406.500	324.448
Luxembourg (FL)	14.820	14.200	13.980	13.420	10.986
Nederland (FL)	772	739	777	719	616
United Kingdom (£)	182,30	174,60	187,00	204,00	147,10

(1) Prix les plus souvent pratiqués et ainsi représentatifs, selon les meilleures estimations des experts des Etats Membres, du marché pétrolier de chaque Etat Membre.  
Prices most frequently changed and thus representative, of the oil market in each Member State, according to the best estimates of the national experts.

(2) Prix à la pompe/Pump price.

(3) Prix pour livraison de 2.000 à 5.000 litres/Prices for deliveries of 2,000 to 5,000 litres.

(4) Prix pour livraisons inférieures à 2000 tonnes par mois ou inférieures à 24.000 tonnes par an. Prix franco consommateurs.  
Prices for offtakes of less than 2,000 tons per month or less than 24,000 tons per year. Delivered Consumer Prices.

\* Prix maximaux/Maximum prices.

Niveaux indicatifs hebdomadaires des prix hors taxes à la consommation en dollars courants  
Weekly indicative consumer price levels in current dollars. Tax and duties excluded (1)

(Tableau hebdomadaire)

Prix au : 23.7.1984  
Prices as at

TABLEAU 2  
TABLE

	Essence super Premium gasoline 1000 L (2)	Essence normale Regular gasoline 1000 L (2)	Gasol moteur automotive gasoil 1000 L (2)	Gasol chauffage Heating gasoil 1000 L (3)	Fuel Residual: MTS Residual Fuel Oil MSC Tonne (4)
Belgique *	267,30	256,28	242,33	218,46	188,85
Danmark	254,77	243,79	255,24	233,30	185,59
Deutschland	240,23	220,01	239,88	218,27	183,05
Ellas	274,23	256,53	178,69	178,69	137,09
France	248,79	233,08	249,38	237,33	186,19
Irèland	293,87	287,77	298,07	242,17	194,67
Italia	246,41	222,76	242,44	230,73	184,16
Luxembourg	255,25	244,57	240,78	231,14	189,21
Nederland	238,41	228,22	239,96	225,05	190,24
United Kingdom	240,56	230,40	246,76	269,20	194,11
C.E.E./E.E.C.					
a) Moyenne/Average (5)	246,06	226,11	243,27	230,41	184,87
b) Variation moyenne % Average variation % 23.7.84 /15.12.78	+28%	+23%	+40%	+59%	+94%
c) Variation moyenne sur les 5 produits Average variation for all 5 products 23.7.84 /15.12.78			+58%		

(1) Prix les plus souvent pratiqués et ainsi représentatifs, selon les meilleures estimations des experts des Etats Membres, du marché pétrolier de chaque Etat Membre.  
Prices most frequently changed and thus representative of the oil market in each Member State, according to the best estimates of the national experts.

(2) Prix à la pompe/ Pump price.

(3) Prix pour livraison de 2.000 à 5.000 litres./ Prices for deliveries of 2,000 to 5,000 litres.

(4) Prix pour livraison inférieure à 2000 tonnes par mois ou inférieure à 24.000 tonnes par an. Prix franco consommateurs.

Prices for offtakes of less than 2,000 tons per month or less than 24,000 tons per year. Delivered Consumer Prices.

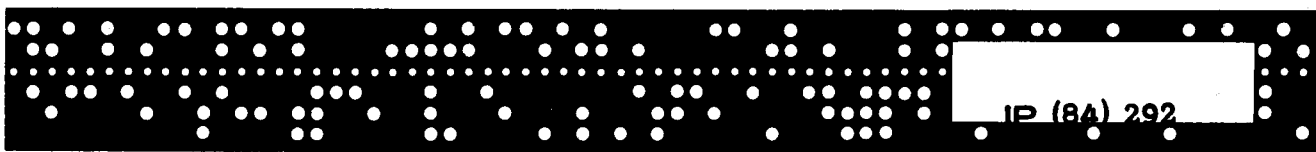
(5) La moyenne résulte d'une pondération des quantités consommées de chaque produit concerné au cours de l'année 1982.  
The result of weighting the prices of the products concerned by the quantities consumed during the period 1982

\* Prix maximaux/Maximum prices.

TABLEAU 3  
TABLE

Coût CAF d'approvisionnement en brut de la Communauté.  
CIF Cost of Community crude oil supplies.

	S/B	S/T
Prix au Price as at 15.12.78	13,87	107,74
Prix au mois d'avril 1984 Price as at April 1984	29,66	+219,19
Evolution (%) 23.7.84 /15.12.78		+113,80%



IP (84) 292

**PRESSE-MEDDELELSE · MITTEILUNG AN DIE PRESSE · PRESS-RELEASE · INFORMATION A LA PRESSE  
ΑΝΑΚΟΙΝΩΣΗ ΓΙΑ ΤΟΝ ΤΥΠΟ · INFORMAZIONE ALLA STAMPA · MEDEDELING AAN DE PERS**

Brussels, 9 August 1984.

COMMISSION OIL BULLETIN NO. 254

4417.4/1

The weekly oil bulletin, published by the Commission, gives the latest available data relating to price development in the Member States and for the Community as a whole. The Commission considers that the bulletin contributes to improved transparency as regards Community oil markets.

The figures given in each bulletin follow the development over time of certain prices. They permit a comparison at any instant in time between Member States but such a comparison may not be representative of international price relationships over a longer period. Moreover, it is evident that such a comparison is limited even if fluctuations in exchange rates are ignored; although valid for identical products sold to the same categories of consumer no account is taken of market structures, (the product categories reported are not in every case representative of the bulk of sales for each product in each country), quality specifications and methods of distribution which are unique to each Member State. In this context the essentially indicative nature of some elements of table 2 is emphasised.

A detailed methodology will be appended to the bulletin published at the beginning of each quarter.

The Commission Oil Bulletin is freely available on demand (telephone 235.35.75).

Weekly summary :

Evolution (in %) of Community indications for :

1<sup>o</sup>) Weighted average pre-tax prices for principal oil products at 30.7.1984 (Table 2)

compared with 15.12.1978 +57%

compared with previous week -0,50%

2<sup>o</sup>) Weighted average CIF cost of crude oil supplies for April 1984 (Table 3)

compared with 15.12.1978 +113,80%

(1) The CIF supply cost is derived from monthly declarations by Member States (see Oil Bulletin 252 for methodology).

**THE NEXT BULLETIN WILL BE PUBLISHED ON 23 AUGUST 1984**

(Tableau hebdomadaire)

Prix au  
Prices as at : 30.7.1984

TABLEAU 1  
TABLE

	Essence super Premium gasoline 1000 L (2)	Essence normale Regular gasoline 1000 L (2)	Gasoil moteur Automotive gasoil 1000 L (2)	Gasoil chauffage Heating gasoil 1000 L (3)	Fuel Residual HTS Residual Fuel Oil MSC Tonne (4)
Belgique (FB)*	15,520	14,880	13,774	12,376	10,965
Danmark (DK)	2,670	2,555	2,675	2,445	1,945
Deutschland (DM)	695	636	697	621	525
Elles (DM)	30,988	28,988	28,193	20,193	15,492
France (FF)	2,190,00	2,051,70	2,195,20	2,089,10	1,639
Irlande (Irish £)	274,39	268,70	278,31	226,12	181,77
Italia (Lire)	434,130	392,460	427,130	406,496	323,740
Luxembourg (FL)	14,820	14,200	13,980	13,420	10,986
Nederland (FL)	767	733	766	711	616
United Kingdom (£)	184,20	177,50	187,00	211,20	155,00

(1) Prix le plus souvent pratiqués et ainsi représentatifs, selon les meilleures estimations des experts des Etats Membres, du marché pétrolier de chaque Etat Membre.

Prices most frequently changed and thus representative, of the oil market in each Member State, according to the best estimates of the national experts.

(2) Prix à la pompe/Pump price.

(3) Prix pour livraison de 2.000 à 5.000 litres/Prices for deliveries of 2,000 to 5,000 litres.

(4) Prix pour livraisons inférieures à 2000 tonnes par mois ou inférieures à 24.000 tonnes par an. Prix franco consommateurs. Prices for offtakes of less than 2,000 tons per month or less than 24,000 tons per year. Delivered Consumer Prices.

\* Prix maximaux/Maximum prices.

Niveaux indicatifs hebdomadaires des prix hors taxes à la consommation en dollars courants  
Weekly indicative consumer price levels in current dollars. Tax and duties excluded (1)

(Tableau hebdomadaire)

Prix au  
Prices as at : 30.7.1984

TABLEAU 2  
TABLE

	Essence super Premium gasoline 1000 L (2)	Essence normale Regular gasoline 1000 L (2)	Gasoil moteur automotive gasoil 1000 L (2)	Gasoil chauffage Heating gasoil 1000 L (3)	Fuel Residual HTS Residual Fuel Oil MSC Tonne (4)
Belgique *	265,25	254,31	235,41	211,51	187,40
Danmark	252,55	241,67	253,02	231,27	183,97
Deutschland	240,19	219,80	240,88	214,61	181,44
Elles	271,91	254,36	177,19	177,19	135,94
France	246,62	231,04	247,20	235,25	184,57
Irlande	291,56	285,51	295,72	240,27	193,14
Italia	244,03	220,60	240,09	228,49	181,97
Luxembourg	253,29	242,69	238,93	229,36	187,76
Nederland	234,53	224,13	234,22	217,41	188,36
United Kingdom	240,84	232,08	244,50	276,15	202,66
C.E.E./E.E.C.					
a) Moyenne/Average (5)	244,81	225,57	241,60	228,50	184,95
b) Variation moyenne % Average variation % 30.7.84 /15.12.78	+27%	+23%	+39%	+58%	+94%
c) Variation moyenne sur les 5 produits Average variation for all 5 products 30.7.84 /15.12.78			+57%		

(1) Prix les plus souvent pratiqués et ainsi représentatifs, selon les meilleures estimations des experts des Etats Membres, du marché pétrolier de chaque Etat Membre.

Prices most frequently changed and thus representative of the oil market in each Member State, according to the best estimates of the national experts.

(2) Prix à la pompe/ Pump price

(3) Prix pour livraison de 2.000 à 5.000 litres./ Prices for deliveries of 2,000 to 5,000 litres.

(4) Prix pour livraison inférieure à 2000 tonnes par mois ou inférieure à 24.000 tonnes par an. Prix franco consommateurs.

Prices for offtakes of less than 2,000 tons per month or less than 24,000 tons per year. Delivered Consumer Prices.

(5) La moyenne résulte d'une pondération des quantités consommées de chaque produit concerné au cours de l'année 1982.

The result of weighting the prices of the products concerned by the quantities consumed during the period 1982

\* Prix maximaux/Maximum prices.

TABLEAU 3  
TABLE

Coût CAF d'approvisionnement en brut de la Communauté.  
CIF Cost of Community crude oil supplies.

	S/B	S/T
Prix au Price as at 15.12.78	13,87	107,74
Prix au mois d'avril 1984. Price as at April 1984.	29,66	219,12
Evolution (X) 30.7.84 /15.12.78		+113,80%

Prix de vente des produits pétroliers en monnaies nationales  
Selling Prices of Petroleum Products in National currencies.

(Tableau mensuel)

Prix moyens pratiqués au  
 Average of prices ruling as at 15.5.1984

**TABEAU 4**  
**TABLE 4**

	Essence super Premium Gasoline 1000 L (1)			Essence Normale Regular Gasoline 1000 L (1)			Gasoil Moteur Automotive Gasoil 1000 L (1)		
	Taxes	Hors taxes Without Taxes	Prix de vente Selling Price	Taxes	Hors taxes Without Taxes	Prix de vente Selling Price	Taxes	Hors taxes Without taxes	Prix de ve Selling Pr
Belgique (FB)	17.490	13.960	31.450	17.330	13.320	30.650	10.050	13.950	24.000
Danmark (KD)	3.377,63	2.792,37	6.170	3.352,37	2.677,63	6.030	1.036,29	2.713,71	3.750
Deutschland (DM)	678,80	699	1.377,80	671,40	643	1.314,40	601,60	700	1.301,60
Ellas (DR)	26.011,72	30.988,28	57.000	24.011,43	28.988,57	53.000	7.806,67	20.193,33	28.000
France (FF)	2.837,40	2.132,60	4.970	2.667,30	2.002,70	4.670	1.698,60	2.171,40	3.870
Ireland (I.£)	354,85	271,15	626	353,70	266,10	619,80	275,55	277,65	553,20
Italia (Lire)	845.870	434.130	1.280.000	837.540	392.460	1.230.000	190.350	443.650	634.000
Luxembourg (FL)	11.780	14.820	26.600	11.700	14.200	25.900	6.520	13.980	20.500
Nederland (FL)	1.012	781	1.793	1.007	754	1.761	387	786	1.173
U. Kingdom (£)	224,20	178,80	403	223,00	171,10	394,10	194,40	185,90	380,30

Taux de change au 15.5.1984

	Gasoil Chauffage Heating Gasoil 1000 L (3)			Fuel Lourd HTS Heavy Fuel HSC Tonne (3)		
	Taxes	Hors taxes Without Taxes	Prix de vente Selling Price	Taxes	Hors taxes Without Taxes	Prix de vente Selling Price
Belgique (FB)	2.121	12.479	14.600	-	10.700	10.700
Danmark (KD)	985,74	2.484,26	3.470	410	1.915	2.325
Deutschland (DM)	107	628	735	15	521,30	536,30
Ellas (DR)	7.806,67	20.193,33	28.000	3.508	15.492	19.000
France (FF)	597,50	2.070,50	2.668	59	1.668	1.727
Ireland (I.£)	29,65	225,45	255,10	10,14	177,04	187,18
Italia (Lire)	185.411	410.757	596.168	1.000	322.985	323.985
Luxembourg (FL)	810	13.420	14.230	100	10.986	11.086
Nederland (FL)	179	724	903	11,20	615	626,20
U. Kingdom (£)	7,7	191,90	199,60	7,93	141,97	149,90

1 \$ = 56,12 FB - 10,0850 CD -  
 2,7570 DM - 108,24 DR -  
 8,4680 FF - 0,8968 IRL -  
 1.698 Lires - 3,1020 FL -  
 0,7217 UKL

1 écu = 45,6162 FB - 8,19741 CD -  
 2,24098 DM - 87,9810 DR -  
 6,88306 FF - 0,728998 IRL -  
 1.380,19 Lires - 2,52141 FL  
 0,586671 UKL.

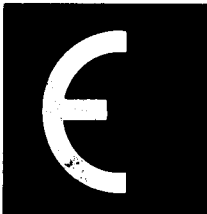
(1) Prix à la pompe/Pump price

(2) Livraisons de 2000 à 5000 L./Deliveries of 2,000 to 5,000 L.

(3) Livraisons de moins 2000 tonnes par mois et de moins de 24.000 tonnes par an  
 Offtakes of less than 2,000 tons per month or less than 24,000 tons per year.







**PRESSE-MEDDELELSE · MITTEILUNG AN DIE PRESSE · PRESS-RELEASE · INFORMATION A LA PRESSE  
ΑΝΑΚΟΙΝΩΣΗ ΓΙΑ ΤΟΝ ΤΥΠΟ · INFORMAZIONE ALLA STAMPA · MEDEDELING AAN DE PERS**

4417.411

Brussels, 23 August 1984.

COMMISSION OIL BULLETIN NO. 255

The weekly oil bulletin, published by the Commission, gives the latest available data relating to price development in the Member States and for the Community as a whole. The Commission considers that the bulletin contributes to improved transparency as regards Community oil markets.

The figures given in each bulletin follow the development over time of certain prices. They permit a comparison at any instant in time between Member States but such a comparison may not be representative of international price relationships over a longer period. Moreover, it is evident that such a comparison is limited even if fluctuations in exchange rates are ignored; although valid for identical products sold to the same categories of consumer no account is taken of market structures, (the product categories reported are not in every case representative of the bulk of sales for each product in each country), quality specifications and methods of ~~distribution~~ which are unique to each Member State. In this context the essentially indicative nature of some elements of table 2 is emphasised.

A detailed methodology will be appended to the bulletin published at the beginning of each quarter.

The Commission Oil Bulletin is freely available on demand (telephone 235.35.75).

Weekly summary :

Evolution (in %) of Community indications for :

1 <sup>o</sup> ) Weighted average pre-tax prices for principal oil products at 6.8.1984 (Table 2)	
compared with 15.12.1978	+59%
compared with previous week	+ 1%
2 <sup>o</sup> ) Weighted average CIF cost of crude oil supplies for April 1984 (Table 3)	
compared with 15.12.1978	+113,80%

(1) The CIF supply cost is derived from monthly declarations by Member States (see Oil Bulletin 252 for methodology).

Niveaux indicatifs hebdomadaires des prix hors taxes à la consommation en monnaies nationales  
Weekly indicative consumer price levels in national currencies. Tax and duties excluded (1)

(Tableau hebdomadaire)

Prix au : 6.8.1984  
Prices as at : 6.8.1984

TABLEAU 1  
TABLE

	Essence super Premium gasoline 1000 L (2)	Essence normale Regular gasoline 1000 L (2)	Gasoil moteur Automotive gasoil 1000 L (2)	Gasoil chauffage Heating gasoil 1000 L (3)	Fuel Residual MTS Residual Fuel Oil MSC Tonne (4)
Belgique (FB)*	15,520	14,880	14,102	12,709	11,234
Danmark (DK)	2,875	2,760	2,675	2,445	1,945
Deutschland (DM)	677	618	679	612	527
Ellas (DR)	30,988	28,988	28,193	20,193	15,492
France (FF)	2,190,00	2,051,70	2,195,20	2,089,10	1,709
Irlande (Irish £)	274,39	268,70	278,31	226,12	181,77
Italia (Lire)	434,130	392,460	427,130	406,113	331,025
Luxembourg (FL)	14,820	14,200	13,980	13,420	10,986
Nederland (FL)	764	730	760	703	615
United Kingdom (£)	184,90	178,20	187,00	211,20	154,80

(1) Prix le plus souvent pratiqués et ainsi représentatifs, selon les meilleures estimations des experts des Etats Membres, du marché pétrolier de chaque Etat Membre.

Prices most frequently changed and thus representative, of the oil market in each Member State, according to the best estimates of the national experts.

(2) Prix à la pompe/Pump price.

(3) Prix pour livraison de 2.000 à 5.000 litres/Prices for deliveries of 2,000 to 5,000 litres.

(4) Prix pour livraisons inférieures à 2000 tonnes par mois ou inférieures à 24.000 tonnes par an. Prix franco consommateurs. Prices for offtakes of less than 2,000 tons per month or less than 24,000 tons per year. Delivered Consumer Prices.

\* Prix maximaux/Maximum prices.

Niveaux indicatifs hebdomadaires des prix hors taxes à la consommation en dollars courants  
Weekly indicative consumer price levels in current dollars. Tax and duties excluded (1)

(Tableau hebdomadaire)

Prix au : 6.8.1984  
Prices as at : 6.8.1984

TABLEAU 2  
TABLE

	Essence super Premium gasoline 1000 L (2)	Essence normale Regular gasoline 1000 L (2)	Gasoil moteur automotive gasoil 1000 L (2)	Gasoil chauffage Heating gasoil 1000 L (3)	Fuel Residual MTS Residual Fuel Oil MSC Tonne (4)
Belgique *	267,45	256,43	243,02	219,01	193,59
Danmark	274,79	263,79	255,67	233,69	185,90
Deutschland	236,30	215,70	236,99	213,61	183,94
Ellas	272,06	254,50	177,28	177,28	136,01
France	249,09	233,35	249,68	237,61	194,38
Irlande	294,56	288,45	298,77	242,74	195,13
Italia	246,41	222,76	242,44	230,51	187,89
Luxembourg	255,39	244,71	240,92	231,26	189,32
Nederland	236,16	225,65	234,93	217,31	190,10
United Kingdom	245,38	236,49	248,17	280,29	205,44
C.E.E./E.E.C.					
a) Moyenne/Average (5)	246,77	225,07	242,50	229,97	189,88
b) Variation moyenne % Average variation % 6.8.84 /15.12.78	+28%	+23%	+39%	+59%	+99%
c) Variation moyenne sur les 5 produits Average variation for all 5 products 6.8.84 /15.12.78			+59%		

(1) Prix les plus souvent pratiqués et ainsi représentatifs, selon les meilleures estimations des experts des Etats Membres, du marché pétrolier de chaque Etat Membre.

Prices most frequently changed and thus representative of the oil market in each Member State, according to the best estimates of the national experts.

(2) Prix à la pompe/ Pump price

(3) Prix pour livraison de 2.000 à 5.000 litres./ Prices for deliveries of 2,000 to 5,000 litres.

(4) Prix pour livraison inférieure à 2000 tonnes par mois ou inférieure à 24.000 tonnes par an. Prix franco consommateurs.

Prices for offtakes of less than 2,000 tons per month or less than 24,000 tons per year. Delivered Consumer Prices.

(5) La moyenne résulte d'une pondération des quantités consommées de chaque produit concerné au cours de l'année 1982

The result of weighting the prices of the products concerned by the quantities consumed during the period 1982

\* Prix maximaux/Maximum prices.

TABLEAU 3  
TABLE

Coût CAF d'approvisionnement en brut de la Communauté.  
CIF Cost of Community crude oil supplies.

	S/B	S/T
Prix au Price as at 15.12.78	13,87	107,74
Prix au mois d'avril 1984 Price as at April 1984	29,66	219,19
Evolution (X) 6.8.1984/15.12.78		+113,80%



**PRESSE-MEDDELELSE • MITTEILUNG AN DIE PRESSE • PRESS-RELEASE • INFORMATION A LA PRESSE  
 ΑΝΑΚΟΙΝΩΣΗ ΓΙΑ ΤΟΝ ΤΥΠΟ • INFORMAZIONE ALLA STAMPA • MEDEDELING AAN DE PERS**

4417.411

Brussels, 30 August 1984.

COMMISSION OIL BULLETIN NO. 256

The weekly oil bulletin, published by the Commission, gives the latest available data relating to price development in the Member States and for the Community as a whole. The Commission considers that the bulletin contributes to improved transparency as regards Community oil markets.

The figures given in each bulletin follow the development over time of certain prices. They permit a comparison at any instant in time between Member States but such a comparison may not be representative of international price relationships over a longer period. Moreover, it is evident that such a comparison is limited even if fluctuations in exchange rates are ignored; although valid for identical products sold to the same categories of consumer no account is taken of market structures, (the product categories reported are not in every case representative of the bulk of sales for each product in each country), quality specifications and methods of distribution which are unique to each Member State. In this context the essentially indicative nature of some elements of table 2 is emphasised.

A detailed methodology will be appended to the bulletin published at the beginning of each quarter.

The Commission Oil Bulletin is freely available on demand (telephone 235.35.75).

Weekly summary :

Evolution (in %) of Community indications for :

<p>1<sup>o</sup>) Weighted average pre-tax prices                  for principal oil products at 20.8.1984 (Table 2)</p> <p>compared with 15.12.1978</p> <p>compared with previous week</p>	<p>_____</p> <p>+59%</p> <p>_____</p> <p>-</p> <p>_____</p>
<p>2<sup>o</sup>) Weighted average CIF cost of crude                  oil supplies for April 1984 (Table 3)</p> <p>compared with 15.12.1978</p>	<p>_____</p> <p>+113,80%</p> <p>_____</p>

(1) The CIF supply cost is derived from monthly declarations by Member States (see Oil Bulletin 252 for methodology).

Niveaux indicatifs hebdomadaires des prix hors taxes à la consommation en monnaies nationales  
Weekly indicative consumer price levels in national currencies. Tax and duties excluded (1)

(Tableau hebdomadaire)

Prix au : 20.8.1984.  
Prices as at

TABLEAU 1  
TABLE

	Essence super Premium gasoline 1000 L (2)	Essence normale Regular gasoline 1000 L (2)	Gasoil moteur Automotive gasoil 1000 L (2)	Gasoil chauffage Heating gasoil 1000 L (3)	Fuel Residual HTS Residual Fuel Oil HSC Tonne (4)
Belgique (FB)*	15.520	14.880	14.102	12.709	11.068
Danmark (DK)	2.875	2.760	2.675	2.445	1.975
Deutschland (DM)	675	616	681	630	524
Ellas (DR)	30.988	28.988	20.193	20.193	15.492
France (FF)	2.254,30	2.099,20	2.225,70	2.123,60	1.709
Irlande (Irish £)	280,90	273,58	282,37	228,81	186,53
Italia (Lire)	434.130	392.460	427.130	405.157	334.397
Luxembourg (FL)	14.820	14.200	13.980	13.420	10.986
Nederland (FL)	781	739	791	732	617
United Kingdom (£)	184,90	178,20	187,00	208,20	154,20

(1) Prix le plus souvent pratiqués et ainsi représentatifs, selon les meilleures estimations des experts des Etats Membres, du marché pétrolier de chaque Etat Membre.

Prices most frequently charged and thus representative, of the oil market in each Member State, according to the best estimates of the national experts.

(2) Prix à la pompe/Pump price.

(3) Prix pour livraison de 2.000 à 5.000 litres/Prices for deliveries of 2,000 to 5,000 litres.

(4) Prix pour livraisons inférieures à 2000 tonnes par mois ou inférieures à 24.000 tonnes par an. Prix franco consommateurs. Prices for offtakes of less than 2,000 tons per month or less than 24,000 tons per year. Delivered Consumer Prices.

\* Prix maximaux/Maximum prices.

Niveaux indicatifs hebdomadaires des prix hors taxes à la consommation en dollars courants  
Weekly indicative consumer price levels in current dollars. Tax and duties excluded (1)

(Tableau hebdomadaire)

Prix au : 20.8.1984  
Prices as at

TABLEAU 2  
TABLE

	Essence super Premium gasoline 1000 L (2)	Essence normale Regular gasoline 1000 L (2)	Gasoil moteur automotive gasoil 1000 L (2)	Gasoil chauffage Heating gasoil 1000 L (3)	Fuel Residual HTS Residual Fuel Oil HSC Tonne (4)
Belgique *	267,71	256,67	243,25	219,22	190,91
Danmark	274,39	263,42	255,30	233,35	188,49
Deutschland	235,12	214,57	237,21	219,45	182,52
Ellas	269,34	251,96	175,51	175,51	134,65
France	255,79	238,19	252,54	240,96	193,91
Irlande	301,97	294,10	303,55	245,97	200,52
Italia	244,33	220,88	240,39	228,03	188,20
Luxembourg	255,63	244,94	241,14	231,48	189,50
Nederland	241,08	228,12	244,17	225,96	190,46
United Kingdom	243,80	234,96	246,57	274,52	203,32
C.E.E./E.E.C.					
a) Moyenne/Average (5)	247,68	224,88	242,91	232,17	189,25
b) Variation moyenne % Average variation % 20.8.84 /15.12.78	+29%	+22%	+40%	+60%	+99%
c) Variation moyenne sur les 5 produits Average variation for all 5 products 20.8.84 /15.12.78			+59%		

(1) Prix les plus souvent pratiqués et ainsi représentatifs, selon les meilleures estimations des experts des Etats Membres, du marché pétrolier de chaque Etat Membre.

Prices most frequently charged and thus representative of the oil market in each Member State, according to the best estimates of the national experts.

(2) Prix à la pompe/ Pump price

(3) Prix pour livraison de 2.000 à 5.000 litres./ Prices for deliveries of 2,000 to 5,000 litres.

(4) Prix pour livraison inférieure à 2000 tonnes par mois ou inférieure à 24.000 tonnes par an. Prix franco consommateurs.

Prices for offtakes of less than 2,000 tons per month or less than 24,000 tons per year. Delivered Consumer Prices.

(5) La moyenne résulte d'une pondération des quantités consommées de chaque produit concerné au cours de l'année 1980  
The result of weighting the prices of the products concerned by the quantities consumed during the period 1980

\* Prix maximaux/Maximum prices.

TABLEAU 3  
TABLE

- Coût CAF d'approvisionnement en brut de la Communauté.  
CIF Cost of Community crude oil supplies.

	\$/B	\$/T
Prix au 15.12.78 Price as at	13,87	107,74
Prix au mois d'avril 1984 Price as at April 1984	29,66	219,19
Evolution (%) 20.8.1984 /15.12.78	+113,80%	

**PRESSE-MEDELSELE • MITTEILUNG AN DIE PRESSE • PRESS-RELEASE • INFORMATION A LA PRESSE  
 ΑΝΑΚΟΙΝΩΣΗ ΓΙΑ ΤΟΝ ΤΥΠΟ • INFORMAZIONE ALLA STAMPA • MEDEDELING AAN DE PERS**

4417.411

Brussels, 6th September 1984

COMMISSION OIL BULLETIN NO.257

The weekly oil bulletin, published by the Commission, gives the latest available data relating to price development in the Member States and for the Community as a whole. The Commission considers that the bulletin contributes to improved transparency as regards Community oil markets.

The figures given in each bulletin follow the development over time of certain prices. They permit a comparison at any instant in time between Member States but such a comparison may not be representative of international price relationships over a longer period. Moreover, it is evident that such a comparison is limited even if fluctuations in exchange rates are ignored; although valid for identical products sold to the same categories of consumer no account is taken of market structures, (the product categories reported are not in every case representative of the bulk of sales for each product in each country), quality specifications and methods of distribution which are unique to each Member State. In this context the essentially indicative nature of some elements of table 2 is emphasised.

A detailed methodology will be appended to the bulletin published at the beginning of each quarter.

The Commission Oil Bulletin is freely available on demand (telephone 235.35.75).

Weekly summary :	Evolution (in %) of Community indications for :
------------------	---

1°) Weighted average pre-tax prices for principal oil products at 27.8.1984 (Table 2)	
compared with 15.12.1978	+ 59 %
compared with previous week	-
2°) Weighted average CIF cost of crude oil supplies for april 1984 (Table 3)	
compared with 15.12.1978	+ 113,80 %

(1) The CIF supply cost is derived from monthly declarations by Member States (see Oil Bulletin 252 for methodology).

Niveaux indicatifs hebdomadaires des prix hors taxes à la consommation en monnaies nationales  
Weekly indicative consumer price levels in national currencies. Tax and duties excluded (1)

(Tableau hebdomadaire)

Prix au : 27.8.1984  
Prices as at : 27.8.1984

TABLEAU 1  
TABLE

	Essence super Premium gasoline 1000 L (2)	Essence normale Regular gasoline 1000 L (2)	Gasoil moteur Automotive gasoil 1000 L (2)	Gasoil chauffage Heating gasoil 1000 L (3)	Fuel Residual HTS Residual Fuel Oil HSC Tonne (4)
Belgique (FB)*	15.520	14.880	14.470	13.077	11.068
Danmark (DK)	2.875	2.760	2.675	2.445	1.975
Deutschland (DM)	687	627	694	637	524
Ellas (DR)	30.988	28.988	20.193	20.193	15.492
France (FF)	2.254,30	2.099,20	2.225,70	2.123,60	1.709
Irlande (Irish £)	280,90	273,58	282,37	228,81	186,53
Italia (Lire)	434.130	392.460	427.130	406.531	333.786
Luxembourg (FL)	14.820	14.200	13.980	13.420	10.986
Nederland (FL)	781	739	807	749	626
United Kingdom (£)	183,20	175,60	187,-	208,10	153,60

(1) Prix les plus souvent pratiqués et ainsi représentatifs, selon les meilleures estimations des experts des Etats Membres, du marché pétrolier de chaque Etat Membre.  
Prices most frequently charged and thus representative, of the oil market in each Member State, according to the best estimates of the national experts.

(2) Prix à la pompe/Pump price.

(3) Prix pour livraison de 2.000 à 5.000 litres/Prices for deliveries of 2,000 to 5,000 litres.

(4) Prix pour livraisons inférieures à 2000 tonnes par mois ou inférieures à 24.000 tonnes par an. Prix franco consommateurs.  
Prices for offtakes of less than 2,000 tons per month or less than 24,000 tons per year. Delivered Consumer Prices.

\* Prix maximaux/Maximum prices.

Niveaux indicatifs hebdomadaires des prix hors taxes à la consommation en dollars courants  
Weekly indicative consumer price levels in current dollars. Tax and duties excluded (1)

(Tableau hebdomadaire)

Prix au : 27.8.1984  
Prices as at : 27.8.1984

TABLEAU 2  
TABLE

	Essence super Premium gasoline 1000 L (2)	Essence normale Regular gasoline 1000 L (2)	Gasoil moteur Automotive gasoil 1000 L (2)	Gasoil chauffage Heating gasoil 1000 L (3)	Fuel Residual HTS Residual Fuel Oil HSC Tonne (4)
Belgique *	267,89	256,85	249,77	225,72	191,04
Danmark	275,05	264,05	255,91	233,91	188,95
Deutschland	239,24	218,35	241,68	221,83	182,48
Ellas	269,36	251,98	175,53	175,53	134,66
France	255,67	238,08	252,43	240,85	193,83
Irlande	301,97	294,10	303,55	245,97	200,52
Italia	244,06	220,63	240,12	228,54	187,65
Luxembourg	255,81	245,11	241,31	231,64	189,63
Nederland	241,16	228,19	249,18	231,27	193,29
United Kingdom	239,35	229,42	244,31	271,88	200,67
C.E.E./E.E.C.					
a) Moyenne/Average (5)	247,27	226,11	244,30	233,30	188,70
b) Variation moyenne % Average variation % 27.8.84 /15.12.78	+ 28 %	+ 23%	+ 40%	+ 61%	+ 98 %
c) Variation moyenne sur Les 5 produits Average variation for all 5 products 27.8.84 /15.12.78			+ 59 %		

(1) Prix les plus souvent pratiqués et ainsi représentatifs, selon les meilleures estimations des experts des Etats Membres, du marché pétrolier de chaque Etat Membre.  
Prices most frequently charged and thus representative of the oil market in each Member State, according to the best estimates of the national experts.

(2) Prix à la pompe/ Pump price

(3) Prix pour livraison de 2.000 à 5.000 litres./ Prices for deliveries of 2,000 to 5,000 litres.

(4) Prix pour livraison inférieure à 2000 tonnes par mois ou inférieure à 24.000 tonnes par an. Prix franco consommateurs.  
Prices for offtakes of less than 2,000 tons per month or less than 24,000 tons per year. Delivered Consumer Prices.

(5) La moyenne résulte d'une pondération des quantités consommées de chaque produit concerné au cours de  
The result of weighting the prices of the products concerned by the quantities consumed during the period.

\* Prix maximaux/Maximum prices.

TABLEAU 3  
TABLE

- Coût CAF D'approvisionnement en brut de la Communauté.  
CIF Cost of Community crude oil supplies.

	S/B	S/T
Prix au 15.12.78 Price as at,	13,87	107,74
Prix au mois d'avril 1984 Price as at	29,66	219,19
Evolution (%) 27.8.84 /15.12.78		+ 113,80%

Prix de vente des produits pétroliers en monnaies nationales  
Selling Prices of Petroleum Products in National currencies.

(Tableau mensuel)

Prix moyens pratiqués au 15.6.1984  
 Average of prices ruling as at 15.6.1984

TABLEAU 4  
 TABLE

	Essence super Premium Gasoline 1000 L (1)			Essence Normale Regular Gasoline 1000 L (1)			Gasoil Moteur Automotive Gasoil 1000 L (1)		
	Taxes	Hors taxes Without Taxes	Prix de vente Selling Price	Taxes	Hors taxes Without Taxes	Prix de vente Selling Price	Taxes	Hors taxes Without taxes	Prix de vent Selling Pric
Belgique (FB)	17.280	13.120	30.400	17.120	12.480	29.600	10.020	13.830	23.850
Danmark (KD)	3.395,66	2.874,34	6.270	3.370,36	2.759,54	6.130	1.036,23	2.713,77	3.750
Deutschland (DM)	681,30	705	1.386,30	672,10	650	1.322,10	601,10	692	1.293,10
Ellas (DR)	26.011,72	30.988,28	57.000	24.011,43	28.988,57	53.000	7.806,67	20.193,33	28.000
France (FF)	2.846,70	2.173,30	5.020	2.675	2.035	4.710	1.703,20	2.186,60	3.890
Ireland (I.K)	354,85	271,15	626	353,70	266,10	619,80	275,60	277,86	553,46
Italia (Lire)	845.870	434.130	1.280.000	837.540	392.460	1.230.000	190.350	443.650	634.000
Luxembourg (FL)	11.780	14.820	26.600	11.700	14.200	25.900	6.520	13.980	20.500
Nederland (FL)	1.014	789	1.803	1.008	762	1.770	386	781	1.167
U. Kingdom (K)	224,30	179,60	403,90	223,10	171,70	394,80	194,40	185,90	380,30

	Gasoil Chauffage Heating Gasoil 1000 L (3)			Fuel Lourd HTS Heavy Fuel HSC Tonne (3)		
	Taxes	Hors taxes Without Taxes	Prix de vente Selling Price	Taxes	Hors taxes Without Taxes	Prix de vente Selling Price
Belgique (FB)	2.129	12.521	14.650	-	10.341	10.341
Danmark (KD)	985,74	2.484,26	3.470	410	2.005	2.415
Deutschland (DM)	107,00	631	738	15	529,60	544,90
Ellas (DR)	7.806,67	20.193,33	28.000	3.508	15.492	19.000
France (FF)	600,80	2.088,20	2.689	59	1.681	1.740
Ireland (I.K)	29,68	226,22	255,90	10,14	179,24	189,38
Italia (Lire)	185.501	411.357	596.858	1000	333.753	334.753
Luxembourg (FL)	810	13.420	14.230	100	10.986	11.086
Nederland (FL)	178	719	897	11,20	612	623,20
U. Kingdom (K)	7,70	193,50	201,20	7,93	144,81	152,74

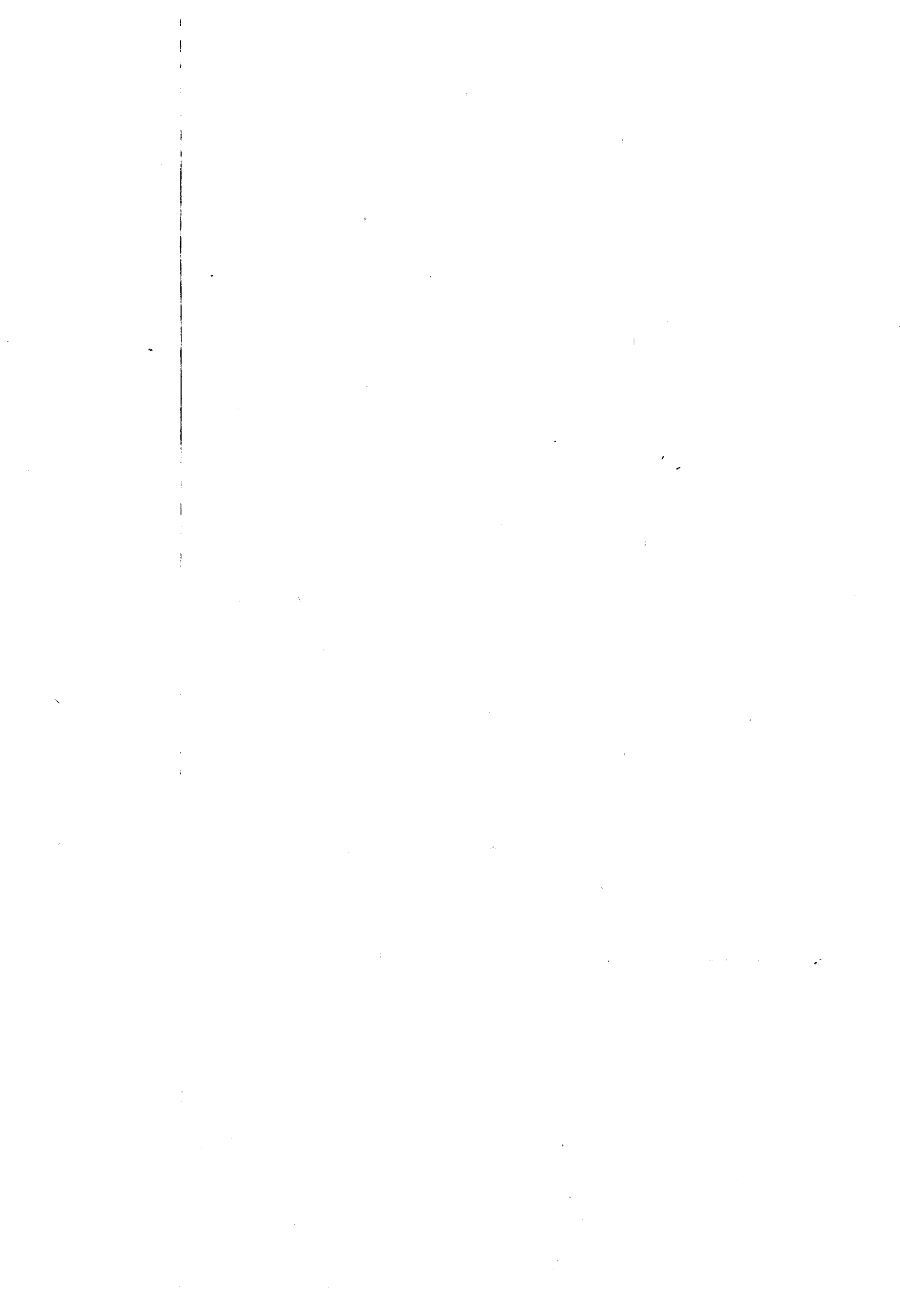
Taux de change au 15.6.1984

1 g=55,73 FB - 10,0385 CD -  
 2,7365 DM - 108,80 DR - 8,4125 FF -  
 0,8944 IRL - 1.696 Lires -  
 3,0825 FL - 0,7248 UKL.  
 1 ECU = 45,5153 FB - 8,19856 CD -  
 2,23493 DM - 88,8582 DR - 6,87058 FF -  
 0,730511 IRL - 1.385,14 LIRES -  
 2,51751 FL - 0,591991 UKL.

(1) Prix à la pompe/Pump price

(2) Livraisons de 2000 à 5000 L./Deliveries of 2,000 to 5,000 L.

(3) Livraisons de moins 2000 tonnes par mois et de moins de 24.000 tonnes par an  
 Offtakes of less than 2,000 tons per month or less than 24,000 tons per year.





**PRESSE-MEDDELELSE · MITTEILUNG AN DIE PRESSE · PRESS-RELEASE · INFORMATION A LA PRESSE  
ΑΝΑΚΟΙΝΩΣΗ ΓΙΑ ΤΟΝ ΤΥΠΟ · INFORMAZIONE ALLA STAMPA · MEDEDELING AAN DE PERS**

4417.411

Brussels, 13rd September 1984

**COMMISSION OIL BULLETIN NO.258**

The weekly oil bulletin, published by the Commission, gives the latest available data relating to price development in the Member States and for the Community as a whole. The Commission considers that the bulletin contributes to improved transparency as regards Community oil markets.

The figures given in each bulletin follow the development over time of certain prices. They permit a comparison at any instant in time between Member States but such a comparison may not be representative of international price relationships over a longer period. Moreover, it is evident that such a comparison is limited even if fluctuations in exchange rates are ignored; although valid for identical products sold to the same categories of consumer no account is taken of market structures, (the product categories reported are not in every case representative of the bulk of sales for each product in each country), quality specifications and methods of distribution which are unique to each Member State. In this context the essentially indicative nature of some elements of table 2 is emphasised.

A detailed methodology will be appended to the bulletin published at the beginning of each quarter.

The Commission Oil Bulletin is freely available on demand (telephone 235.35.75).

**Weekly summary :**

**Evolution (in %) of Community indications for :**

1<sup>o</sup>) Weighted average pre-tax prices  
for principal oil products at 3.9.1984 (Table 2)

compared with 15.12.1978

+ 57 %

compared with previous week

- 1,40 %

2<sup>o</sup>) Weighted average CIF cost of crude  
oil supplies for April 1984 (Table 3)

compared with 15.12.1978

+ 113,80%

(1) The CIF supply cost is derived from monthly declarations by Member States (see Oil Bulletin 252 for methodology).

(Tableau hebdomadaire)

Prix au : 3.9.1984  
Prices as at

TABLEAU 1  
TABLE

	Essence super Premium gasoline 1000 L (2)	Essence normale Regular gasoline 1000 L (2)	Gasol moteur Automotive gasoil 1000 L (2)	Gasol chauffage Heating gasoil 1000 L (3)	Fuel Residual HTS Residual Fuel Oil HSC Tonne (4)
Belgique (FB)*	15.520	14.880	14.470	13.077	11.068
Danmark (DK)	2.875	2.760	2.675	2.445	1.975
Deutschland (DM)	663	603	671	639	524
Ellas (DR)	30.988	28.988	20.193	20.193	15.492
France (FF)	2.254,30	2.099,20	2.225,70	2.123,60	1.709
Irlande (Irish £)	280,90	273,58	282,37	228,81	186,53
Italia (Lire)	434.130	392.460	427.130	406.731	334.008
Luxembourg (FL)	14.820	14.200	13.980	13.420	10.986
Nederland (FL)	781	738	807	749	626
United Kingdom (£)	183,20	175,60	187,00	206,00	152,70

(1) Prix le plus souvent pratiqués et ainsi représentatifs, selon les meilleures estimations des experts des Etats Membres, du marché pétrolier de chaque Etat Membre.

Prices most frequently charged and thus representative, of the oil market in each Member State, according to the best estimates of the national experts.

(2) Prix à la pompe/Pump price.

(3) Prix pour livraison de 2.000 à 5.000 litres/Prices for deliveries of 2,000 to 5,000 litres.

(4) Prix pour livraisons inférieures à 2000 tonnes par mois ou inférieures à 24.000 tonnes par an. Prix franco consommateurs. Prices for offtakes of less than 2,000 tons per month or less than 24,000 tons per year. Delivered Consumer Prices.

\* Prix maximaux/Maximum prices.

Niveaux indicatifs hebdomadaires des prix hors taxes à la consommation en dollars courants  
Weekly indicative consumer price levels in current dollars. Tax and duties excluded (1)

(Tableau hebdomadaire)

Prix au : 3.09.1984  
Prices as at

TABLEAU 2  
TABLE

	Essence super Premium gasoline 1000 L (2)	Essence normale Regular gasoline 1000 L (2)	Gasol moteur automotive gasoil 1000 L (2)	Gasol chauffage Heating gasoil 1000 L (3)	Fuel Residual HTS Residual Fuel Oil HSC Tonne (4)
Belgique *	265,15	254,21	247,21	223,41	189,09
Danmark	271,93	261,05	253,01	231,26	186,80
Deutschland	228,25	207,59	231,00	219,98	180,39
Ellas	267,18	249,93	174,10	174,10	133,57
France	252,90	235,50	249,69	238,24	191,73
Irlande	298,60	290,82	300,17	243,23	198,28
Italia	241,75	218,54	237,85	226,49	183,99
Luxembourg	253,19	242,60	238,84	229,27	187,69
Nederland	238,37	225,25	246,31	228,61	191,06
United Kingdom	239,19	229,27	244,15	268,96	199,37
C.E.E./E.E.C.					
a) Moyenne/Average (5)	243,67	219,39	239,79	231,04	186,92
b) Variation moyenne % Average variation % 3.9.84 /15.12.78	+ 26 %	+ 19 %	+ 38 %	+ 60 %	+ 96 %
c) Variation moyenne sur les 5 produits Average variation for all 5 products 3.9.1984/15.12.78			+ 57 %		

(1) Prix les plus souvent pratiqués et ainsi représentatifs, selon les meilleures estimations des experts des Etats Membres, du marché pétrolier de chaque Etat Membre.

Prices most frequently charged and thus representative of the oil market in each Member State, according to the best estimates of the national experts.

(2) Prix à la pompe/ Pump price

(3) Prix pour livraison de 2.000 à 5.000 litres./ Prices for deliveries of 2,000 to 5,000 litres.

(4) Prix pour livraison inférieure à 2000 tonnes par mois ou inférieure à 24.000 tonnes par an. Prix franco consommateurs. Prices for offtakes of less than 2,000 tons per month or less than 24,000 tons per year. Delivered Consumer Prices.

(5) La moyenne résulte d'une pondération des quantités consommées de chaque produit concerné au cours de l'année 1982. The result of weighting the prices of the products concerned by the quantities consumed during the period 1982.

\* Prix maximaux/Maximum prices.

TABLEAU 3  
TABLE

- Coût CAF d'approvisionnement en brut de la Communauté.

CIF Cost of Community crude oil supplies.

	1984	1978
Prix au : 15.12.78	13,87	107,74
Price as at		
Prix au mois d'avril 1984	29,66	± 219,19
Price as at April 1984		
Evolution (%) 3.9.1984/15.12.78	+113,80%	

**BULLETIN PETROLIER CEE NO. 258**  
**EEC OIL BULLETIN NO. 258**

Prix C.A.F. moyen de l'approvisionnement en pétrole brut de la Communauté  
en \$ par baril.

Average C.I.F. prices of Community supplies of crude oil in \$ per barrel

	BEL	DEN	GERM	FRAN	IRE	ITAL	NETH	U.K.	EEC \$/bbl	Index (1) Indice
4 <sup>e</sup> Trim 78 4 <sup>th</sup> Q 78	13,95	13,92	14,04	14,19	13,88	13,29	13,84	13,83	13,87	100,0
1 <sup>e</sup> Trim 81 1 <sup>st</sup> Q 81	-	38,50	38,40	37,30	35,90	36,85	36,70	37,58	37,45	270,-
2 <sup>e</sup> Trim 81 2 <sup>nd</sup> Q 81	-	37,53	37,38	37,76	37,11	36,82	37,53	37,51	37,39	269,5
3 <sup>e</sup> Trim 81 3 <sup>rd</sup> Q 81	-	34,69	35,64	36,41	-	35,52	35,38	35,01	35,65	257,-
4 <sup>e</sup> Trim 81 4 <sup>th</sup> Q 81	-	35,48	35,82	36,07	-	34,89	35,49	35,63	35,62	257,-
1 <sup>e</sup> Trim 82 1 <sup>st</sup> Q 82	-	34,42	35,18	35,99	-	34,19	35,50	34,67	35,10	253,-
2 <sup>e</sup> Trim 82 2 <sup>nd</sup> Q 82	-	32,30	33,12	34,46	-	32,08	32,65	32,13	32,97	237,-
3 <sup>e</sup> Trim 82 3 <sup>rd</sup> Q 82	-	33,39	33,60	34,84	33,30	32,43	33,25	33,57	33,57	242,-
4 <sup>e</sup> Trim 82 4 <sup>th</sup> Q 82	-	33,59	33,80	34,64	34,17	32,67	33,54	33,75	33,69	243,-
1 <sup>e</sup> T. 83 1 <sup>st</sup> Q. 83	-	31,75	31,48	33,19	32,17	30,77	32,07	31,73	31,81	229,-
2 <sup>e</sup> T. 83 2 <sup>nd</sup> Q. 83	-	29,43	29,24	30,07	30,02	38,57	29,21	29,58	29,34	212,-
3 <sup>e</sup> T. 83 3 <sup>rd</sup> Q. 83	28,74	29,52	29,53	30,18	30,53	29,20	29,10	29,75	29,56	213,-
4 <sup>e</sup> T. 83 4 <sup>th</sup> Q. 83	-	29,65	29,79	30,11	30,06	28,86	29,24	29,59	29,56	213,-
1 <sup>er</sup> T. 84 1 <sup>st</sup> Q. 84	-	29,34	29,56	29,82	29,92	28,75	29,04	29,62	29,39	212,-

(1) Base 4<sup>e</sup> Trimestre 1978 = 100  
Basis 4<sup>th</sup> Quarter 1978 = 100



**PRESSE-MEDDELELSE · MITTEILUNG AN DIE PRESSE · PRESS-RELEASE · INFORMATION A LA PRESSE  
ΑΝΑΚΟΙΝΩΣΗ ΓΙΑ ΤΟΝ ΤΥΠΟ · INFORMAZIONE ALLA STAMPA · MEDEDELING AAN DE PERS**

4417.411

Brussels, 20 September 1984.

COMMISSION OIL BULLETIN NO. 259

The weekly oil bulletin, published by the Commission, gives the latest available data relating to price development in the Member States and for the Community as a whole. The Commission considers that the bulletin contributes to improved transparency as regards Community oil markets.

The figures given in each bulletin follow the development over time of certain prices. They permit a comparison at any instant in time between Member States but such a comparison may not be representative of international price relationships over a longer period. Moreover, it is evident that such a comparison is limited even if fluctuations in exchange rates are ignored; although valid for identical products sold to the same categories of consumer no account is taken of market structures, (the product categories reported are not in every case representative of the bulk of sales for each product in each country), quality specifications and methods of distribution which are unique to each Member State. In this context the essentially indicative nature of some elements of table 2 is emphasised.

A detailed methodology will be appended to the bulletin published at the beginning of each quarter.

The Commission Oil Bulletin is freely available on demand (telephone 235.35.75).

Weekly summary :

Evolution (in %) of Community indications for :

1<sup>o</sup>) Weighted average pre-tax prices  
for principal oil products at 10.9.1984 (Table 2)

compared with 15.12.1978

+53%

compared with previous week

-2,85%

2<sup>o</sup>) Weighted average CIF cost of crude (1)  
oil supplies for May 1984 (Table 3)

compared with 15.12.1978

+112,70%

(1) The CIF supply cost is derived from monthly declarations by Member States (see Oil Bulletin 252 for methodology).

Niveaux indicatifs hebdomadaires des prix hors taxes à la consommation en monnaies nationales  
Weekly indicative consumer price levels in national currencies. Tax and duties excluded (1)

(Tableau hebdomadaire)

Prix au : 10.9.1984  
Prices as at

TABLEAU 1  
TABLE

	Essence super Premium gasoline 1000 L (2)	Essence normale Regular gasoline 1000 L (2)	Gasol moteur Automotive gasoil 1000 L (2)	Gasol chauffage Heating gasoil 1000 L (3)	Fuel Residual HTS Residual Fuel Oil HSC Tonne (4)
Belgique (PB)*	15,520	14,880	14,470	13,077	11,283
Danmark (DK)	2,890	2,775	2,720	2,490	2,005
Deutschland (DR)	651	591	672	636	532
Ellas (GR)	30,988	28,988	20,193	20,193	15,492
France (FF)	2.254,30	2.099,20	2.225,70	2.123,60	1.709
Irlande (Irish £)	280,90	273,58	282,37	228,81	186,53
Italia (Lire)	434,130	392,460	427,130	407,180	334,763
Luxembourg (FL)	14,820	14,200	13,980	13,420	10,986
Nederland (FL)	789	755	807	749	629
United Kingdom (£)	182,30	174,60	187,00	205,50	152,20

(1) Prix le plus souvent pratiqués et ainsi représentatifs, selon les meilleures estimations des experts des Etats Membres, du marché pétrolier de chaque Etat Membre.  
Prices most frequently changed and thus representative, of the oil market in each Member State, according to the best estimates of the national experts.

(2) Prix à la pompe/Pump price.

(3) Prix pour livraison de 2.000 à 5.000 litres/Prices for deliveries of 2,000 to 5,000 litres.

(4) Prix pour livraisons inférieures à 2000 tonnes par mois ou inférieures à 24.000 tonnes par an. Prix franco consommateurs.  
Prices for offtakes of less than 2,000 tons per month or less than 24,000 tons per year. Delivered Consumer Prices.

\* Prix maximaux/Maximum prices.

Niveaux indicatifs hebdomadaires des prix hors taxes à la consommation en dollars courants  
Weekly indicative consumer price levels in current dollars. Tax and duties excluded (1)

(Tableau hebdomadaire)

Prix au : 10.9.1984  
Prices as at

TABLEAU 2  
TABLE

	Essence super Premium gasoline 1000 L (2)	Essence normale Regular gasoline 1000 L (2)	Gasol moteur automotive gasoil 1000 L (2)	Gasol chauffage Heating gasoil 1000 L (3)	Fuel Residual HTS Residual Fuel Oil HSC Tonne (4)
Belgique *	257,60	246,98	240,17	217,05	187,27
Danmark	266,48	255,87	250,80	229,59	184,87
Deutschland	217,54	197,49	224,56	212,53	177,77
Ellas	262,74	245,78	171,21	171,21	131,35
France	245,45	228,57	242,34	231,22	186,08
Irlande	290,45	282,88	291,97	236,59	192,87
Italia	235,62	213,00	231,82	220,99	181,68
Luxembourg	245,98	235,69	232,04	222,74	182,34
Nederland	233,77	223,70	239,11	221,92	186,37
United Kingdom	232,11	222,30	238,09	261,65	193,78
C.E.E./E.E.C.					
a) Moyenne/Average (5)	236,12	211,07	233,45	224,31	182,69
b) Variation moyenne % Average variation % 10.9.1984/15.12.78	+23%	+15%	+34%	+55%	+92%
c) Variation moyenne sur Les 5 produits Average variation for all 5 products 10.9.1984/15.12.78			+53%		

(1) Prix les plus souvent pratiqués et ainsi représentatifs, selon les meilleures estimations des experts des Etats Membres, du marché pétrolier de chaque Etat Membre.  
Prices most frequently changed and thus representative of the oil market in each Member State, according to the best estimates of the national experts.

(2) Prix à la pompe/ Pump price

(3) Prix pour livraison de 2.000 à 5.000 litres./ Prices for deliveries of 2,000 to 5,000 litres.

(4) Prix pour livraison inférieure à 2000 tonnes par mois ou inférieure à 24.000 tonnes par an. Prix franco consommateurs.

(5) La moyenne résulte d'une pondération des quantités consommées de chaque produit concerné au cours de l'année 1982.

The result of weighting the prices of the products concerned by the quantities consumed during the period 1982

\* Prix maximaux/Maximum prices.

TABLEAU 3  
TABLE

Coût CAF d'approvisionnement en brut de la Communauté.

CIF Cost of Community crude oil supplies.

	\$/B	\$/T
Prix au 15.12.78 Price as at	13,87	107,74
Prix au mois de mai 1984 Price as at May 1984	29,50	+217,56
Evolution (%) 10.9.1984 /15.12.78		+112,70

Prix de vente des produits pétroliers en monnaies nationales  
Selling Prices of Petroleum Products in National currencies.

(Tableau mensuel)

Prix moyens pratiqués au 15.7.1984  
 Average of prices ruling as at 15.7.1984

TABLEAU 4  
 TABLE 4

	Essence super Premium Gasoline 1000 L (1)			Essence Normale Regular Gasoline 1000 L (1)			Gasoil Moteur Automotive Gasoil 1000 L (1)		
	Taxes	Hors taxes Without Taxes	Prix de vente Selling Price	Taxes	Hors taxes Without Taxes	Prix de vente Selling Price	Taxes	Hors taxes Without taxes	Prix de ve Selling Pr
Belgique (FB)	17.420	13.680	31.100	17.260	13.040	30.300	9.990	13.710	23.700
Danmark (KD)	3.395,66	2.874,34	6.270	3.370,46	2.759,54	6.130	1.027,21	2.672,79	3.700
Deutschland (DM)	678,90	700	1.378,90	671,30	642	1.313,30	598,50	680	1.278,50
Ellas (DR)	26.011,72	30.988,28	57.000	24.011,43	28.988,57	53.000	7.806,67	20.193,33	28.000
France (FF)	3.050	2.190	5.240	2.878,30	2.051,70	4.930	1.764,80	2.195,20	3.960
Ireland (I.£)	355,49	273,91	629,40	354,15	268,05	622,20	275,58	277,82	553,40
Italia (Lire)	845.870	434.130	1.280.000	837.540	392.460	1.230.000	187.870	427.130	615.000
Luxembourg (FL)	11.780	14.820	26.600	11.700	14.200	25.900	6.520	13.980	20.500
Nederland (FL)	1.011	772	1.783	1.004	739	1.743	386	777	1.163
U. Kingdom (£)	224,30	179,70	404,00	223,10	171,70	394,80	194,30	185,20	379,50

	Gasoil Chauffage Heating Gasoil 1000 L (3)			Fuel Lourd HTS Heavy Fuel HSC Tonne (3)		
	Taxes	Hors taxes Without Taxes	Prix de vente Selling Price	Taxes	Hors taxes Without Taxes	Prix de vente Selling Price
Belgique (FB)	2.136	12.564	14.700	-	10.636	10.636
Danmark (KD)	976,72	2.443,28	3.420	410,00	1.945	2.355
Deutschland (DM)	106	624	730	15	527,30	542,30
Ellas (DR)	7.806,67	20.193,33	28.000	3.508	15.492	19.000
France (FF)	640,90	2.089,10	2.730	59	1.620	1.679
Ireland (I.£)	29,63	225,17	254,80	10,14	185,94	196,08
Italia (Lire)	184,999	408,009	593,008	1.000	326,910	327.910
Luxembourg (FL)	810	13.420	14.230	100	10.986	11.086
Nederland (FL)	178	719	897	11,20	621	632,20
U. Kingdom (£)	7,70	193,60	201,30	7,93	147,37	155,30

Taux de change au 16.7.1984

18 = 57,1875 FB - 10,31 CD -  
 2,8190 DM - 111,52 DR -  
 8,6545 FF - 0,9203 IRL -  
 1.737 Lire - 3,1810 FL -  
 0,7552 UKL

1 écu = 45,3031 FB - 8,16743 CD -  
 2,23317 DM - 88,3446 DR -  
 6,85597 FF - 0,729,117 IRL -  
 1.376,03 Lire - 2,51994 FL -  
 0,598282 UKL

(1) Prix à la pompe/Pump price

(2) Livraisons de 2000 à 5000 L./Deliveries of 2,000 to 5,000 L.

(3) Livraisons de moins 2000 tonnes par mois et de moins de 24.000 tonnes par an  
 Offtakes of less than 2,000 tons per month or less than 24,000 tons per year.







IP (84) 328

**PRESSE-MEDDELELSE • MITTEILUNG AN DIE PRESSE • PRESS-RELEASE • INFORMATION A LA PRESSE  
 ΑΝΑΚΟΙΝΩΣΗ ΓΙΑ ΤΟΝ ΤΥΠΟ • INFORMAZIONE ALLA STAMPA • MEDEDELING AAN DE PERS**

4417.411

Brussels, 27 September 1984.

COMMISSION OIL BULLETIN NO. 260

The weekly oil bulletin, published by the Commission, gives the latest available data relating to price development in the Member States and for the Community as a whole. The Commission considers that the bulletin contributes to improved transparency as regards Community oil markets.

The figures given in each bulletin follow the development over time of certain prices. They permit a comparison at any instant in time between Member States but such a comparison may not be representative of international price relationships over a longer period. Moreover, it is evident that such a comparison is limited even if fluctuations in exchange rates are ignored; although valid for identical products sold to the same categories of consumer no account is taken of market structures, (the product categories reported are not in every case representative of the bulk of sales for each product in each country), quality specifications and methods of distribution which are unique to each Member State. In this context the essentially indicative nature of some elements of table 2 is emphasised.

A detailed methodology will be appended to the bulletin published at the beginning of each quarter.

The Commission Oil Bulletin is freely available on demand (telephone 235.35.75).

Weekly summary :

Evolution (in %) of Community indications for :

<p>1<sup>o</sup>) Weighted average pre-tax prices                  for principal oil products at 17.9.1984 (Table 2)</p> <p style="padding-left: 40px;">compared with 15.12.1978</p> <p style="padding-left: 40px;">compared with previous week</p>	<p style="padding-left: 100px;">+52%</p> <hr style="width: 100%;"/> <p style="padding-left: 100px;">-0,60%</p> <hr style="width: 100%;"/>
<p>2<sup>o</sup>) Weighted average CIF cost of crude (1)                  oil supplies for June 1984 (Table 3)</p> <p style="padding-left: 40px;">compared with 15.12.1978</p>	<p style="padding-left: 100px;">+112,50%</p> <hr style="width: 100%;"/>

(1) The CIF supply cost is derived from monthly declarations by Member States (see Oil Bulletin 252 for methodology).

Niveaux indicatifs hebdomadaires des prix hors taxes à la consommation en monnaies nationales  
Weekly indicative consumer price levels in national currencies. Tax and duties excluded (1)

(Tableau hebdomadaire)

Prix au  
Prices as at : 17.9.1984

TABLEAU 1  
TABLE

	Esence super Premium gasoline 1000 L (2)	Esence normale Regular gasoline 1000 L (2)	Gasol moteur Automotive gasoil 1000 L (2)	Gasol chauffage Heating gasoil 1000 L (3)	Fuel Residual HTS Residual Fuel Oil HSC Tonne (4)
Belgique (FB)*	15.840	15.040	15.190	13.803	11.577
Danmark (DK)	2.890	2.775	2.720	2.490	2.005
Deutschland (DM)	676	616	680	662	541
Ellas (DR)	30.988	28.988	20.193	20.193	15.492
France (FF)	2.243,30	2.076,00	2.225,70	2.124,50	1.789
Irlande (Irish £)	280,90	273,58	282,37	228,81	186,53
Italia (Lire)	434.130	392.460	427.130	407.574	335.392
Luxembourg (FL)	14.820	14.200	13.980	13.420	10.986
Nederland (Fl)	806	772	836	777	647
United Kingdom (£)	182,30	174,60	187,00	212,30	156,40

(1) Prix le plus souvent pratiqués et ainsi représentatifs, selon les meilleures estimations des experts des Etats Membres, du marché pétrolier de chaque Etat Membre.

\* Prices most frequently charged and thus representative, of the oil market in each Member State, according to the best estimates of the national experts.

(2) Prix à la pompe/Pump price.

(3) Prix pour livraison de 2.000 à 5.000 litres/Prices for deliveries of 2,000 to 5,000 litres.

(4) Prix pour livraisons inférieures à 2000 tonnes par mois ou inférieures à 24.000 tonnes par an. Prix franco consommateurs. Prices for offtakes of less than 2,000 tons per month or less than 24,000 tons per year. Delivered Consumer Prices.

\* Prix maximaux/Maximum prices.

Niveaux indicatifs hebdomadaires des prix hors taxes à la consommation en dollars courants  
Weekly indicative consumer price levels in current dollars. Tax and duties excluded (1)

(Tableau hebdomadaire)

Prix au  
Prices as at : 17.9.1984

TABLEAU 2  
TABLE

	Esence super Premium gasoline 1000 L (2)	Esence normale Regular gasoline 1000 L (2)	Gasol moteur automotive gasoil 1000 L (2)	Gasol chauffage Heating gasoil 1000 L (3)	Fuel Residual HTS Residual Fuel Oil HSC Tonne (4)
Belgique *	257,09	244,10	246,54	224,02	187,90
Danmark	260,71	250,33	245,37	224,62	180,87
Deutschland	220,66	201,07	221,96	216,09	176,59
Ellas	259,35	242,61	169,00	169,00	129,66
France	238,91	221,09	237,04	226,26	190,53
Irlande	284,42	277,01	285,91	231,68	188,87
Italia	230,27	208,17	226,56	216,19	177,90
Luxembourg	240,53	230,47	236,90	217,81	178,30
Nederland	233,48	223,63	242,17	225,08	187,42
United Kingdom	228,30	218,65	234,18	265,87	195,86
C.E.E./E.E.C.					
a) Moyenne/Average (5)	232,93	210,93	229,97	224,65	182,33
b) Variation moyenne % Average variation % 17.9.84 /15.12.78	+21%	+15%	+32%	+55%	+91%
c) Variation moyenne sur les 5 produits Average variation for all 5 products 17.9.84 /15.12.78	+52%				

(1) Prix les plus souvent pratiqués et ainsi représentatifs, selon les meilleures estimations des experts des Etats Membres, du marché pétrolier de chaque Etat Membre.

Prices most frequently charged and thus representative of the oil market in each Member State, according to the best estimates of the national experts.

(2) Prix à la pompe/ Pump price

(3) Prix pour livraison de 2.000 à 5.000 litres./ Prices for deliveries of 2,000 to 5,000 litres.

(4) Prix pour livraison inférieure à 2000 tonnes par mois ou inférieure à 24.000 tonnes par an. Prix franco consommateurs.

Prices for offtakes of less than 2,000 tons per month or less than 24,000 tons per year. Delivered Consumer Prices.

(5) La moyenne résulte d'une pondération des quantités consommées de chaque produit concerné au cours de l'année 1982  
The result of weighting the prices of the products concerned by the quantities consumed during the period 1982

\* Prix maximaux/Maximum prices.

TABLEAU 3  
TABLE

Coût CAF d'approvisionnement en brut de la Communauté. CIF Cost of Community crude oil supplies.	Prix au Price as at	15.12.78	13,87	107,74
	Prix au mois de juin Price as at June	1984	29,47	+217,49
Evolution (%) 17.9.1984 /15.12.78		+112,50		