

European Communities

EUROPEAN PARLIAMENT

Working Documents

1981 - 1982

3 MARCH 1982

DOCUMENT 1-1069/81

Report

drawn up on behalf of the Committee on Budgetary
Control

on the administrative expenditure of the European
Parliament for the period 1 January to 31 December
1981 (1981 financial year)

Rapporteur: Mr K. SCHÖN

Pursuant to Rule 115(2) of the Rules of Procedure, the President of the European Parliament forwarded to the Committee on Budgetary Control the report on the administrative expenditure of the European Parliament for the period 1 January to 31 December 1981 (1981 financial year).

On 23 February 1982 the Committee on Budgetary Control appointed Mr Konrad Schön rapporteur.

The committee considered the report at its meeting of 23 and 24 February 1982 and adopted it unanimously.

The following took part in the vote: Mr Aigner, chairman; Mrs Boserup and Mr Price, vice-chairmen; Mr K. Schön, rapporteur; Mr Ferrero, Mr Georgiadis (deputizing for Mr Orlandi), Mr Irmer, Mr Marck, Mr J.B. Nielsen (deputizing for Mr Jürgens), Mr Notenboom, Mr Saby, Mr Simpson (deputizing for Mr Battersby) and Mr Wawrzik (deputizing for Mr Früh).

C O N T E N T S

	<u>Page</u>
A. MOTION FOR A RESOLUTION	5
B. EXPLANATORY STATEMENT	7
ANNEX: Report on the administrative expenditure for the 1981 financial year	11

The Committee on Budgetary Control hereby submits to the European Parliament the following motion for a resolution, together with explanatory statement:

MOTION FOR A RESOLUTION

on the administrative expenditure of the European Parliament for the period 1 January to 31 December 1981 (1981 financial year)

The European Parliament,

- having regard to the report of the Committee on Budgetary Control (Doc. 1-1069/81),

A. APPROPRIATIONS AVAILABLE

1. Points out that
 - (a) the appropriations entered in the annual budget amounted to 199,400,879 ECU,
 - (b) the appropriations automatically carried forward from 1980 to 1981 amounted to 15,789,177.83 ECU and
 - (c) the non-automatic carry-forwards from 1980 to 1981 amounted to 220,000 ECU.

B. UTILIZATION

2. Notes that the appropriations were used as follows:

Appropriations entered in the annual budget for 1981:

 - (a) 171,345,294.82 ECU was committed (86%)
 - (b) 155,606,511.29 ECU was paid (77%)
 - (c) 15,738,783.53 ECU remains to be paid; (7.7%)

Appropriations carried forward from 1980 to 1981:

 - (a) the payments resulting from automatic carry-forwards amount to 12,400,149.11 ECU, or (79%) of the appropriations available;
 - (b) no payments were made against the non-automatic carry-forwards amounting to 220,000 ECU.

C. CANCELLATIONS

3. Notes that the provisions of the Financial Regulation entail the following cancellations:
 - (a) 27,385,584.18 ECU (13.73%) of the appropriations for 1981;
 - (b) 3,389,028.72 ECU (21.46%) of the appropriations automatically carried forward from 1980 to 1981;
 - (c) 220,000 ECU (100%) of the non-automatic carry-forwards from 1980 to 1981.

D. APPROPRIATIONS TO BE CARRIED FORWARD

4. Notes

- (a) that the 15,738,783.53 ECU committed but not yet paid must be automatically carried forward from 1981 to 1982 and
- (b) that it is proposed to apply the non-automatic carry-forward procedure to 670,000 ECU.

E. OWN REVENUE FOR THE FINANCIAL YEAR

5. Notes that:

- (a) the entitlements established for the 1981 financial year amount to 15,429,956.14 ECU;
- (b) the entitlements carried forward from the preceding financial year amount to 1,375.15 ECU;
- (c) the revenue collected amounts to 15,354,217.24 ECU;
- (d) the sum remaining to be covered is therefore 77,114.05 ECU.

o o
o

6. Instructs its President to forward this resolution, the attached accounts and the report of the Committee on Budgetary Control to the Commission of the European Communities so as to enable it to draw up the revenue and expenditure account and balance sheet of the Community pursuant to Articles 73 and 74 of the Financial Regulation.

EXPLANATORY STATEMENTIntroduction

1. Article 74 of the Financial Regulation¹ provides that each institution shall, not later than 1 April, forward to the Commission the information required for drawing up the revenue and expenditure account and the balance sheet relating to the budget of the EEC.
2. This information is required by the Commission to enable it to submit, not later than 1 June, the complete revenue and expenditure account of the Communities pursuant to Article 73 of the Financial Regulation.
3. This report is drawn up pursuant to Rule 115(2) and (3) of the Rules of Procedure, which lay down that:
 - 'the President shall forward the draft annual accounts to the committee responsible';
 - 'on the basis of a report by the committee, Parliament shall pass its accounts and decide on the giving of a discharge'.
4. At this stage, all that is to be done is to pass the accounts. Parliament will take a decision on the discharge only following the report of the Court of Auditors on the 1981 financial year.

This report is therefore something of an interim document, its main purpose being to conform to the provisions of the above-mentioned article of the Financial Regulation of the Communities.

General comments

5. As appears from the overall figures cited in the resolution, the expenditure forecasts were once again overestimated.

The rate of utilization of the appropriations entered in the estimates is only 86%. The accounts show that only 171,345,294.82 ECU out of a total available of 199,400,879 ECU was committed. Cancellations thus amount to approximately 27.4 m ECU.

This fact is emphasized once again and should be looked at in the context of the difficulties encountered by the Committee on Budgets every year in its efforts to reduce expenditure estimates or arrive at a better assessment of them in relation to actual needs.

6. The virtually structural phenomenon of under-utilization of the appropriations requested as a whole or, rather, the over-estimation of the appropriations required for each financial year, cannot however be properly

¹ OJ No. L 356, 31.12.1977

judged unless due account is taken of the increases and reductions in expenditure occurring under the different budgetary headings by comparison with the preceding year and also of the changes in appropriations that may have taken place in the course of the year under each heading, in particular through transfers.

In the light of these three considerations it appears that an initial conclusion can be drawn. In the interests of optimum management of the appropriations available coupled with the provision of the most accurate and rational picture of the financial developments within the institution, it would be preferable for the responsible bodies of Parliament to draw up for internal use, after the first half of the financial year, a kind of rectifying budget. Implementation of this idea would not only indicate any under-utilization of the appropriations available, but would also show to the departments of the Secretariat concerned, in the light of the rate of commitment in the first half-year, under which chapters a particular need for economy existed.

The Committee on Budgetary Control puts forward this suggestion having in mind that a regular overestimation of appropriations not only of course leads to a cancellation of a substantial proportion of the appropriations at the end of the year, but may also lead to waste, since the availability of excessive funds may discourage the careful and thrifty attitude needed in regard to expenditure.

Comments on the implementation of expenditure for 1981 appearing in the draft report on the administrative expenditure for the financial year

7. Contrary to what the Committee on Budgetary Control was entitled to expect, the general review and comments supplied with the draft report on the administrative expenditure of Parliament are quite inadequate to permit the parliamentary bodies concerned to assess the desirability and soundness of the expenditure against chapters where payment is not virtually automatic, as it is, for example, in the case of Members' allowances or staff remuneration. The importance of this remark is appreciated when one considers the size of the institution's operating expenditure proper, which comes to around 50.3 m ECU out of a total expenditure of 171.3 m ECU.

8. In the same context it should be pointed out, as appears from Table 1 on page 8 of the draft report on the administrative expenditure submitted to the Committee on Budgetary Control, that the entitlements actually established and revenue actually collected were almost invariably higher (by about 15%) than the estimated revenue for the financial year (around 15.4 m ECU as against around 13.6 m ECU).

9. Furthermore, the analysis submitted remains silent on the causes of the 'enrichment' during the financial year of the appropriations under certain headings by means of transfers. For example, when the estimates were adopted the appropriation entered for Item 1110 'auxiliary staff' was

2,635,000 ECU; this was increased by 675,000 ECU by means of transfer. It is probable that greater recourse had to be made to such staff by delayed recruitment or non-recruitment of staff entered on the establishment plan. Nevertheless, such circumstances and their causes should be referred to when the Secretariat is required to report on a given financial year to the responsible financial bodies of the institution.

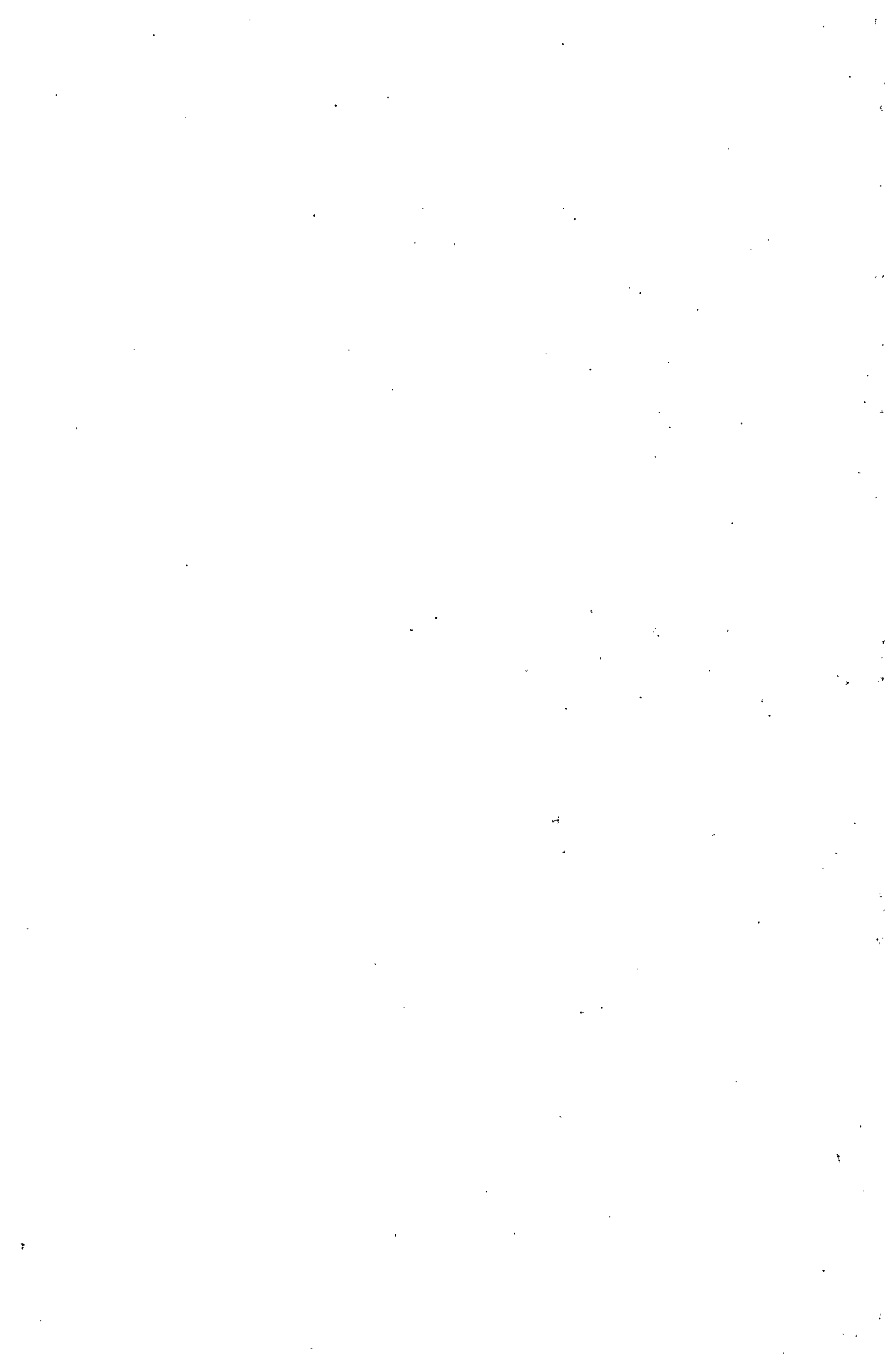
Similarly, light should have been thrown on the movements of appropriations in 1981 under Item 2222 'hire of equipment and technical installations'. This item, cited here by way of example, had an appropriation of 760,000 ECU; this was increased by a transfer of 350,000 ECU, a sum almost equal to 50% of the original appropriation. From the table showing the utilization of appropriations for the year (page 26) it appears that out of the final appropriation of 1,110,000 ECU 257,144.02 ECU had to be cancelled.

These facts, which a careful examination of the report submitted to the Committee on Budgetary Control shows to be neither rare nor isolated, call for much more pertinent comments than have been put forward.

10. These last observations are reinforced not only by the need to enable the appropriate control authorities to make a proper assessment of expenditure during the financial year, but also by the very logic of things. In fact, the end-of-year review is much more scanty than the analyses received by the Committee on Budgetary Control in connection with the quarterly expenditure reports. This shortcoming is thus scarcely justified, especially since, as everyone is aware, the Financial Regulation of the Communities places on the institutions an obligation, which they regularly fail to discharge completely and satisfactorily, namely to supply an analysis of the financial management in respect of the year in question (Article 75 of the Financial Regulation). This situation is particularly unacceptable at the European Parliament in that the abovementioned provision of Article 75 of the Financial Regulation was originally introduced at the initiative of our institution, in the conviction that it was principally by an analysis of the financial management that it would be able to discharge properly its powers of control, and hence of discharge, in respect of the implementation of the budget each year, which must in no event be reduced to a mere 'assemblage' of accounting data.

Conclusion

11. In the light of these general observations, the rapporteur proposes that, whilst submitting the 1981 accounts to Parliament within the time-limits imposed by the Financial Regulation and thus enabling the Commission to draw up the revenue and expenditure account for the 1981 financial year, the Committee on Budgetary Control should find time in the near future to study the financial data relating to the year in question.



REPORT
on the
ADMINISTRATIVE EXPENDITURE
OF THE EUROPEAN PARLIAMENT
during the
PERIOD 1 JANUARY TO 31 DECEMBER 1981
(1981 FINANCIAL YEAR)

CONTENTS

	<u>Page</u>
Summary table	13
Comparative table	14
General review of and comments on the budgetary expenditure effected in 1981	15
Table 1 - Own revenue for the 1981 financial year	18
Table 2 - Evolution of appropriations for the 1981 financial year	19
Table 3 - Utilization of appropriations for the 1981 financial year	31
Table 4 - Utilization of appropriations carried forward to the 1981 financial year	43
Financial statement	51

SUMMARY TABLE

REPORT ON ADMINISTRATIVE EXPENDITURE

FOR THE 1981 FINANCIAL YEAR

<u>I. APPROPRIATIONS AVAILABLE</u>	<u>ECU</u>
The appropriations entered in the budget of the European Parliament for the financial year 1981 were as follows:	199,400,879
 <u>II. UTILIZATION OF APPROPRIATIONS</u>	
Appropriations committed:	171,345,294.82
Appropriations not committed at 31.12.81 and carried forward pursuant to Article 6(1)(b) of the FR	670,000
i.e. a cancellation rate of 13.73%	<u>27,385,584.18</u>
 III. (a) Appropriations carried forward automatically (Art. 6(1)(c) of the FR) from the 1980 to the 1981 financial year:	 15,789,177.83
Payments from the above carry-forwards:	12,400,149.11
i.e. a cancellation rate of 21.46%	<u>3,389,028.72</u>
 (b) Appropriations not committed at 31.12.80 and carried forward (Art. 6(1)(b) of the FR):	 220,000
These carry-forwards were not utilized.	

PARLIAMENT EXPENDITURE
COMPARATIVE TABLE

The table below shows, chapter by chapter, the main increases or decreases in expenditure, including amounts outstanding at the close of the 1981 financial year, compared with the 1980 financial year.

Chap.	Heading	1981 ECU	1980 ECU	+/- ECU	+/- ECU
10	Members of the institution	31,664,708.50	22,884,131.89	+8,780,576.61	+38.36
11	Staff	79,844,866.02	65,955,913.05	+13,888,952.97	+21.05
12	Allowances and expenses on entering and on leaving the service and on transfer	2,132,131.58	1,743,244.25	+388,887.33	+22.30
13	Expenditure relating to missions and duty travel	6,345,506.31	4,789,736.61	+1,555,769.70	+32.48
14	Expenditure on social welfare	707,020.42	448,563.78	+258,456.64	+57.61
15	In-service training and further training of staff	322,340.88	266,359.51	+55,981.37	+21.01
	<u>TITLE 1</u>	<u>121,016,573.71</u>	<u>96,087,949.09</u>	<u>+24,928,624.62</u>	<u>+25.94</u>
20	Immovable property investments, rental of buildings and associated expenditure	23,311,466.49*	17,763,864.63	+5,547,601.86	+31.22
22	Movable property and associated expenses	6,355,607.78*	8,048,041.00	-1,692,433.22	-21.02
23	Current operating expenditure	4,602,687.74	3,446,331.24	+1,156,356.50	+33.55
24	Entertainment and representation expenses	299,003.95	262,166.26	+36,837.69	+14.05
25	Expenditure for formal and other meetings	332,177.03	175,938.62	+156,238.41	+88.80
26	Expenditure on studies, surveys and consultations	109,727.41	4,299.14	+105,428.27	+2,452.31
27	Expenditure on publishing and information	6,635,712.31	5,052,190.24	+1,583,522.07	+31.34
29	Subsidies and financial contributions	1,961,922.87	1,940,638.72	+21,284.15	+1.09
	<u>TITLE 2</u>	<u>43,608,305.58</u>	<u>36,693,469.85</u>	<u>+6,914,835.73</u>	<u>+18.84</u>
37	Expenditure relating to certain institutions and bodies	6,720,415.53	4,827,664.07	+1,892,751.46	+39.20
	<u>TITLE 3</u>	<u>6,720,415.53</u>	<u>4,827,664.07</u>	<u>+1,892,751.46</u>	<u>+39.20</u>
	<u>GRAND TOTAL</u>	<u>171,345,294.82</u>	<u>137,609,083.01</u>	<u>+33,736,211.81</u>	<u>+24.51</u>

*Non-automatic carry-forward Chap. 20: 480,000 ECU and Chap. 22: 190,000 ECU in progress, not included.

GENERAL REVIEW OF AND COMMENTS ON THE BUDGETARY EXPENDITURE EFFECTED IN 1981

Total expenditure in the 1981 financial year amounted to 171,345,294.82 ECU, an increase of 24.5% over 1980, as against a 19% increase the previous year.

The rate of utilization of the appropriations entered improved from 78% in 1980 to 86% in 1981.

CHAPTER 10 - MEMBERS OF THE INSTITUTION

88.5% of the appropriations were utilized. Cancellations were made in particular against Article 109 'Provisional appropriations to cover any adjustments', which were not used at all, and Item 1004 'Travel and subsistence allowances', under which the appropriation was overestimated.

CHAPTER 11 - STAFF

The number of posts on the establishment plan rose from 2,573 in 1980 to 2,927 in 1981, representing an increase of 354 or 14%.

Expenditure increased by 21% as a result of an acceleration in the recruitment programme.

The cancellation of 17% of the appropriations under this chapter was due to the fact that part of the new posts could not be filled in the course of the financial year as a result of the recruitment procedure. It should be noted that the last series of posts on the 1981 establishment plan was not released until 15 December 1981.

CHAPTER 12 - ALLOWANCES AND EXPENSES ON ENTERING AND ON LEAVING THE SERVICE AND ON TRANSFER

95% of the appropriations were utilized.

CHAPTER 13 - EXPENDITURE RELATING TO MISSIONS AND DUTY TRAVEL

The appropriations entered against this chapter had to be increased from 5,225,000 ECU to 6,375,000 ECU by means of a transfer. This became necessary as a result of the rise in the number of missions, particularly following the decision to hold all the part-sessions in Strasbourg.

CHAPTER 15 - IN-SERVICE TRAINING AND FURTHER TRAINING OF STAFF

Almost all the appropriations on language courses were utilized, whilst only 70% of the appropriations for in-service training were committed.

CHAPTER 20 - IMMOVABLE PROPERTY INVESTMENTS, RENTAL OF BUILDINGS AND ASSOCIATED EXPENDITURE

94% of the appropriations against this chapter were committed. Total expenditure rose by 31% as a result of the increase in the premises rented at the three places of work.

CHAPTER 22 - MOVABLE PROPERTY AND ASSOCIATED EXPENDITURE

Total expenditure accounted for 85% of appropriations. It decreased from 8.0 m ECU in 1980 to 6.4 m ECU in 1981, in particular as a result of an appreciable reduction in expenditure on technical installations and furniture.

CHAPTER 23 - CURRENT OPERATING EXPENDITURE

Operating expenditure increased by 33% by comparison with the previous financial year, as a result in particular of the substantial rise in telephone and telex charges (+ 69%).

It should also be noted that a sum of 310,000 ECU, which in fact proved insufficient, had to be transferred to Item 2321 'Exchange losses'.

CHAPTER 24 - ENTERTAINMENT AND REPRESENTATION EXPENSES

Only 70% of the appropriations were utilized.

CHAPTER 25 - EXPENDITURE ON FORMAL AND OTHER MEETINGS

The appropriations against this chapter, which were 43% higher than in 1980, were used in full.

CHAPTER 26 - EXPENDITURE ON STUDIES, SURVEYS AND CONSULTATIONS

The appropriation originally entered against this chapter was increased by transfer to cover the fees of consultants asked to work out improvements and rationalization of working methods (Bureau decisions).

CHAPTER 27 - EXPENDITURE ON PUBLISHING AND INFORMATION

Following the increase in the work load and charges, transfers had to be made to increase the appropriations under the items covering the 'Official Journal' and 'Publications'.

Expenditure increased by 31% by comparison with 1980.

CHAPTER 29 - SUBSIDIES AND FINANCIAL CONTRIBUTIONS

The rate of utilization of appropriations was 90%. Cancellations related in particular to Item 2942 'Other grants' for young nationals of American countries, where the programme is being reviewed, and also Item 2991, which covers seminars for teachers, journalists, etc.

CHAPTER 37 - EXPENDITURE RELATING TO CERTAIN INSTITUTIONS AND BODIES

The appropriation against this chapter was 39% up on 1980 and 95% of it was utilized.

The appropriations entered in connection with the association agreements with Turkey and Malta were not used.

CHAPTER 100 - PROVISIONAL APPROPRIATIONS

Out of a total of 4,525,000 ECU, 3,731,111 ECU was transferred to various items under Chapters 20, 22 and 23. The balance, corresponding to 18%, was cancelled.

CHAPTER 101 - CONTINGENCY RESERVE

A total of 600,000 ECU was transferred to Chapter 27; the balance of 1,400,000 ECU, corresponding to 70%, was cancelled.

	Rev.ests. for 1981	Suppl.or amend. budgets	Total ests.	1981 entitlements	1980 ents. carried forward	Total ents.	Rev. collected at 31.12.81			Amounts outstanding or collected in excess
							1981 ents.	1980 ents.	Total	
40 <u>Deductions from staff remuneration</u>										
400 <u>Proceeds of taxation on the salaries, wages and allowances of officials and other servants</u>	8.143.132	-	8.143.132	6.245.771,36	-	6.245.771,36	6.245.771,36	-	6.245.771,36	-
Total under chapter 40	8.143.132	-	8.143.132	6.245.771,36	-	6.245.771,36	6.245.771,36	-	6.245.771,36	-
41 <u>Staff contributions to the pension scheme</u>	4.482.710	-	4.482.710	4.366.727,93	-	4.366.727,93	4.366.727,93	-	4.366.727,93	-
Total under chapter 41	4.482.710	-	4.482.710	4.366.727,93	-	4.366.727,93	4.366.727,93	-	4.366.727,93	-
TOTAL UNDER TITLE 4	12.625.842	-	12.625.842	10.612.499,29	-	10.612.499,29	10.612.499,29	-	10.612.499,29	-
90 <u>Miscellaneous revenue Proceeds of the sale of movable and immovable property</u>										
900 <u>Proceeds of sale of movable property</u>	1.000	-	1.000	9.806,86	-	9.806,86	9.806,86	-	9.806,86	-
902 <u>Sales of publications, printed works and films</u>	155.000	-	155.000	187.613,05	-	187.613,05	187.613,05	-	187.613,05	-
Total under chapter 90	156.000	-	156.000	197.419,91	-	197.419,91	197.419,91	-	197.419,91	-
93 <u>Repayment of miscellaneous expenditure</u>										
930 <u>Repayment of expenditure on account of another institution</u>	-	-	-	-	-	-	-	-	-	-
Total under chapter 93	-	-	-	-	-	-	-	-	-	-
95 <u>Miscellaneous income</u>										
950 <u>Income from investments and loans, bank interest and other items</u>	500.000	-	500.000	3.537.291,79	-	3.537.291,79	3.537.291,79	-	3.537.291,79	-
Total under article 950	500.000	-	500.000	3.537.291,79	-	3.537.291,79	3.537.291,79	-	3.537.291,79	-
951 <u>Differences on exchange</u>	1.000	-	1.000	-	-	-	-	-	-	-
Total under chapter 95	501.000	-	501.000	3.537.291,79	-	3.537.291,79	3.537.291,79	-	3.537.291,79	-
990 <u>Other revenue</u>	300.000	-	300.000	1.082.745,15	1.375,15	1.084.120,30	1.005.631,10	1.375,15	1.007.006,25	77.114,05
TOTAL UNDER TITLE 9	957.000	-	957.000	4.817.456,85	1.375,15	4.818.832,00	4.740.342,80	1.375,15	4.741.717,95	77.114,05
GRAND TOTAL	13.582.842	-	13.582.842	15.429.956,14	1.375,15	15.431.331,29	15.352.842,09	1.375,15	15.354.217,24	77.114,05

(IN ECU)

EVOLUTION OF APPROPRIATIONS IN THE YEAR

1981

TABLE 2

CHAPTER ARTICLE ITEM	DESCRIPTION	INITIAL APPROPR- ATIONS	CHANGES IN APPROPRIATIONS BY TRANSFERS	SUPPLEMENTARY BUDGET	FINAL APPROPRIATIONS FOR THE YEAR 81
1-2-3	4	5	6	7	8
01...	EXPENDITURE RELATING TO PERSONS WORKING WITH THE INSTITUTION				
010..	MEMBERS OF THE INSTITUTION				
0100.	SALARIES, ALLOWANCES AND PAYMENTS RELATED TO SALARIES				
01004	TRAVEL AND SUBSISTENCE ALLOWANCES ; ATTENDANCE AT MEETINGS AND ASSOCIATED EXPENDITURE	14.385.000,00	0,00	0,00	14.385.000,00
01005	CONSTITUENCY WORK	2.083.200,00	0,00	0,00	2.083.200,00
	TOTAL ARTICLE 0100	16.468.200,00	0,00	0,00	16.468.200,00
01010	ACCIDENT AND SICKNESS INSURANCE AND OTHER SOCIAL SECURITY CHARGES	482.000,00	0,00	0,00	482.000,00
0103.	PENSIONS				
01032	SURVIVOR'S PENSIONS	0,00	125.000,00	0,00	125.000,00
01050	LANGUAGE COURSES FOR MEMBERS	157.400,00	0,00	0,00	157.400,00
01060	MEMBER'S SECRETARIAL EXPENSES	14.061.600,00	3.000.000,00	0,00	17.061.600,00
01090	PROVISIONAL APPROPRIATIONS TO COVER ANY ADJUSTMENTS TO THE EMOLUMENTS OF MEMBERS OF THE EUROPEAN PARLIAMENT	4.500.000,00	3.000.000,00	0,00	1.500.000,00
	TOTAL CHAPTER 010	35.669.200,00	125.000,00	0,00	35.794.200,00
011..	STAFF				
0110.	OFFICIALS AND TEMPORARY STAFF HOLDING A POST PROVIDED FOR IN THE LIST OF POSTS				
01100	BASIC SALARIES	66.526.629,00	3.816.000,00	0,00	62.710.629,00
01101	FAMILY ALLOWANCES	5.588.730,00	0,00	0,00	5.588.730,00
01102	EXPATRIATION AND FOREIGN RESIDENCE ALLOWANCES; (INCLUDING THOSE GRANTED UNDER ART. 97 OF THE ECSC STAFF REGULATIONS)	9.846.045,00	0,00	0,00	9.846.045,00
01103	SECRETARIAL ALLOWANCES	473.000,00	225.000,00	0,00	698.000,00
	TOTAL ARTICLE 0110	82.434.404,00	3.591.000,00	0,00	78.843.404,00

(IN ECU)

EVOLUTION OF APPROPRIATIONS IN THE YEAR

1981

TABLE 2

CHAPTER ARTICLE ITEM	DESCRIPTION		INITIAL APPROPR- ATIONS	CHANGES IN APPROPRIATIONS BY TRANSFERS	SUPPLEMENTARY BUDGET	FINAL APPROPRIATIONS FOR THE YEAR 81
1-2-3	4		5	6	7	8
0111.	OTHER STAFF					
01110	AUXILIARY STAFF		2.635.000,00	675.500,00	0,00	3.310.500,00
01112	LOCAL STAFF		50.000,00	0,00	0,00	50.000,00
01113	SPECIAL ADVISORS		28.000,00	0,00	0,00	28.000,00
	TOTAL ARTICLE	0111	2.713.000,00	675.500,00	0,00	3.388.500,00
0113.	INSURANCE AGAINST SICKNESS ACCIDENTS, AND OCCUPATIONAL DISEASES					
01130	INSURANCE AGAINST SICKNESS		2.000.115,00	0,00	0,00	2.000.115,00
01131	INSURANCE AGAINST ACCIDENTS AND OCCUPATIONAL DISEASES		665.710,00	0,00	0,00	665.710,00
	TOTAL ARTICLE	0113	2.665.825,00	0,00	0,00	2.665.825,00
0114.	MISCELLANEOUS ALLOWANCES AND GRANTS					
01140	BIRTH AND DEATH GRANTS		38.000,00	0,00	0,00	38.000,00
01141	ANNUAL LEAVE TRAVEL EXPENSES		924.000,00	0,00	0,00	924.000,00
01143	FIXED ENTERTAINMENT ALLOWANCES		76.000,00	26.500,00	0,00	102.500,00
01144	FIXED TRAVEL ALLOWANCES		38.000,00	6.000,00	0,00	44.000,00
01145	SPECIAL ALLOWANCE IN ACCORDANCE WITH ARTICLE 70 OF THE FINANCIAL REGULATION		20.000,00	0,00	0,00	20.000,00
01146	PAYMENTS PROVIDED FOR BY ARTICLE 42 OF THE CONDITIONS OF EMPLOYMENT OF OTHER SERVANTS OF THE COMMUNITIES		13.000,00	0,00	0,00	13.000,00
	TOTAL ARTICLE	0114	1.109.000,00	32.500,00	0,00	1.141.500,00
01150	OVERTIME		803.000,00	273.000,00	0,00	1.076.000,00
01160	WEIGHTINGS		0,00	2.700.000,00	0,00	2.700.000,00
0117.	SUPPLEMENTARY SERVICES					
01170	FREELANCE INTERPRETERS AND CONFERENCE TECHNICIANS		2.660.000,00	900.000,00	0,00	3.560.000,00
01172	OTHER SERVICES AND WORK SENT OUT FOR TRANSLATION AND TYPING		346.750,00	0,00	0,00	346.750,00
	TOTAL ARTICLE	0117	3.006.750,00	900.000,00	0,00	3.906.750,00

CHAPTER ARTICLE ITEM	DESCRIPTION	INITIAL APPROPR- ATIONS	CHANGES IN APPROPRIATIONS BY TRANSFERS	SUPPLEMENTARY BUDGET	FINAL APPROPRIATIONS FOR THE YEAR 81
-2-3	4	5	6	7	8
01190	PROVISIONAL APPROPRIATIONS TO COVER ANY ADJUSTMENTS TO THE REMUNERATION OF OFFICIALS AND OTHER SERVANTS	5.500.000,00	2.700.000,00	0,00	2.800.000,00
	TOTAL CHAPTER 011	98.231.979,00	1.710.000,00	0,00	96.521.979,00
01200	ALLOWANCES AND EXPENSES ON ENTERING AND LEAVING THE SERVICE AND ON TRANSFER				
01200	MISCELLANEOUS EXPENDITURE ON STAFF RECRUITMENT	300.000,00	0,00	0,00	300.000,00
01210	TRAVEL EXPENSES (INCLUDING FAMILY MEMBERS)				
01211	STAFF	30.000,00	37.000,00	0,00	67.000,00
01220	INSTALLATION, RESETTLEMENT AND TRANSFER ALLOWANCES				
01221	STAFF	500.000,00	0,00	0,00	500.000,00
01230	REMOVAL EXPENSES				
01231	STAFF	320.000,00	131.000,00	0,00	189.000,00
01240	TEMPORARY DAILY SUBSISTENCE ALLOWANCES				
01241	STAFF	630.000,00	131.000,00	0,00	761.000,00
01250	ALLOWANCES FOR STAFF ASSIGNED NON-ACTIVEIVE STATUS, RETIRED IN THE INTERESTS OF THE SERVICE OR DISMISSED	420.000,00	0,00	0,00	420.000,00
	TOTAL CHAPTER 012	2.200.000,00	37.000,00	0,00	2.237.000,00
01300	EXPENDITURE RELATING TO MISSIONS AND DUTY TRAVEL				
01300	MISSION EXPENSES, TRAVEL EXPENSES AND INCIDENTAL EXPENDITURE				
01301	STAFF	5.225.000,00	1.150.000,00	0,00	6.375.000,00
	TOTAL CHAPTER 013	5.225.000,00	1.150.000,00	0,00	6.375.000,00
01400	EXPENDITURE ON SOCIAL WELFARE				
01400	SPECIAL ASSISTANCE GRANTS	11.500,00	0,00	0,00	11.500,00
01410	SOCIAL CONTACTS BETWEEN STAFF	57.000,00	0,00	0,00	57.000,00

(IN ECU)

EVOLUTION OF APPROPRIATIONS IN THE YEAR 1981

TABLE 2

CHAPTER ARTICLE ITEM	DESCRIPTION	INITIAL APPROPR- ATIONS	CHANGES IN APPROPRIATIONS BY TRANSFERS	SUPPLEMENTARY BUDGET	FINAL APPROPRIATIONS FOR THE YEAR 81
1-2-3	4	5	6	7	8
01420	RESTAURANTS AND CANTEENS	133.000,00	167.000,00	0,00	300.000,00
01430	MEDICAL SERVICE	100.000,00	0,00	0,00	100.000,00
0149.	OTHER SOCIAL EXPENDITURE				
01490	OTHER EXPENDITURE	360.000,00	0,00	0,00	360.000,00
	TOTAL CHAPTER 014	661.500,00	167.000,00	0,00	828.500,00
015..	IN-SERVICE TRAINING AND FURTHER TRAINING FOR STAFF				
01500	COST OF ORGANISING IN-SERVICE TRAINING	150.000,00	0,00	0,00	150.000,00
01510	LANGUAGE COURSES, RETRAINING, FURTHER TRAINING AND INFORMATION FOR STAFF	233.000,00	0,00	0,00	233.000,00
	TOTAL CHAPTER 015	383.000,00	0,00	0,00	383.000,00
	TOTAL TITLE 01	142.370.679,00	231.000,00	0,00	142.139.679,00

(IN ECU)

EVOLUTION OF APPROPRIATIONS IN THE YEAR 1981

TABLE 2

CHAPTER ARTICLE ITEM	DESCRIPTION	INITIAL APPROPR- ATIONS	CHANGES IN APPROPRIATIONS BY TRANSFERS	SUPPLEMENTARY BUDGET	FINAL APPROPRIATIONS FOR THE YEAR 81
1-2-3	4	5	6	7	8
02...	BUILDINGS, EQUIPMENT AND MISCELLANEOUS OPERATING EXPENDITURE				
020..	IMMOVABLE PROPERTY INVESTMENTS, RENTAL OF BUILDINGS AND ASSOCIATED EXPENDITURE				
0200.	RENT				
02000	RENT	15.700.000,00	195.500,00	0,00	15.504.500,00
02010	INSURANCE	35.000,00	37.500,00	0,00	72.500,00
02020	WATER, GAS, ELECTRICITY AND HEATING	1.900.000,00	0,00	0,00	1.900.000,00
02030	CLEANING AND MAINTENANCE	3.700.000,00	0,00	0,00	3.700.000,00
02040	FITTING-OUT OF PREMISES	1.000.000,00	1.005.774,00	0,00	2.005.774,00
02050	SECURITY AND SURVEILLANCE OF BUILDINGS	800.000,00	450.000,00	0,00	1.250.000,00
02060	ACQUISITION OF IMMOVABLE PROPERTY	0,00	350.000,00	0,00	350.000,00
02090	OTHER EXPENDITURE	330.000,00	183.000,00	0,00	513.000,00
	TOTAL CHAPTER 020	23.465.000,00	1.830.774,00	0,00	25.295.774,00
022..	MOVABLE PROPERTY AND ASSOCIATED EXPENDITURE				
0220.	OFFICE MACHINES				
02200	NEW PURCHASES	350.000,00	0,00	0,00	350.000,00
02201	REPLACEMENTS	485.000,00	0,00	0,00	485.000,00
02202	HIRE	1.000,00	0,00	0,00	1.000,00
02203	MAINTENANCE, USE AND REPAIR	140.000,00	0,00	0,00	140.000,00
	TOTAL ARTICLE 0220	976.000,00	0,00	0,00	976.000,00
0221.	FURNITURE				
02210	NEW PURCHASES	475.000,00	365.337,00	0,00	840.337,00
02211	REPLACEMENTS	66.000,00	0,00	0,00	66.000,00

(IN ECU)

EVOLUTION OF APPROPRIATIONS IN THE YEAR

1981

TABLE 2

CHAPTER ARTICLE ITEM	DESCRIPTION	INITIAL APPROPR- ATIONS	CHANGES IN APPROPRIATIONS BY TRANSFERS	SUPPLEMENTARY BUDGET	FINAL APPROPRIATIONS FOR THE YEAR 81
1-2-3	4	5	6	7	8
02212	HIRE	2.000,00	3.000,00	0,00	5.000,00
02213	MAINTENANCE, USE AND REPAIR	10.000,00	0,00	0,00	10.000,00
	TOTAL ARTICLE 0221	553.000,00	368.337,00	0,00	921.337,00
0222.	TECHNICAL EQUIPMENT AND INSTALLATION				
02220	NEW PURCHASES	1.930.000,00	50.000,00	0,00	1.880.000,00
02221	REPLACEMENTS	312.000,00	193.000,00	0,00	119.000,00
02222	HIRE	760.000,00	350.000,00	0,00	1.110.000,00
02223	MAINTENANCE, USE AND REPAIR	395.000,00	70.000,00	0,00	465.000,00
	TOTAL ARTICLE 0222	3.397.000,00	177.000,00	0,00	3.574.000,00
0223.	TRANSPORT EQUIPMENT				
02230	NEW PURCHASES	175.000,00	0,00	0,00	175.000,00
02231	REPLACEMENTS	204.000,00	0,00	0,00	204.000,00
02232	HIRE	430.000,00	0,00	0,00	430.000,00
02233	MAINTENANCE, USE AND REPAIR	520.000,00	0,00	0,00	520.000,00
	TOTAL ARTICLE 0223	1.329.000,00	0,00	0,00	1.329.000,00
0224.	EQUIPMENT, OPERATING COSTS AND SERVICES RELATING IN DATA-PROCESSING				
02240	NEW PURCHASES	76.000,00	0,00	0,00	76.000,00
02242	HIRE AND MAINTENANCE OF EQUIPMENT	245.000,00	57.000,00	0,00	188.000,00
02243	DEVELOPMENT AND MAINTENANCE OF APPLICATIONS	115.000,00	57.000,00	0,00	172.000,00
02244	INTERROGATION OF DATA BASES	28.000,00	15.000,00	0,00	13.000,00
	TOTAL ARTICLE 0224	464.000,00	15.000,00	0,00	449.000,00
0225.	DOCUMENTATION AND LIBRARY EXPENDITURE				
02250	LIBRARY EXPENSES, PURCHASE OF BOOKS	123.000,00	0,00	0,00	123.000,00

(IN ECU)

EVOLUTION OF APPROPRIATIONS IN THE YEAR

1981

TABLE 2

CHAPTER ARTICLE ITEM	DESCRIPTION	INITIAL APPROPR- ATIONS	CHANGES IN APPROPRIATIONS BY TRANSFERS	SUPPLEMENTARY BUDGET	FINAL APPROPRIATIONS FOR THE YEAR 81
1-2-3	4	5	6	7	8
02251	SPECIAL LIBRARY DOCUMENTATION AND REPRODUCTION EQUIPMENT	13.500,00	0,00	0,00	13.500,00
02252	SUBSCRIPTIONS TO NEWSPAPERS, PERIODICALS	108.000,00	5.000,00	0,00	113.000,00
02253	SUBSCRIPTIONS TO NEWS AGENCIES	190.000,00	10.000,00	0,00	200.000,00
02254	BINDING AND UPKEEP OF LIBRARY BOOKS	9.000,00	0,00	0,00	9.000,00
	TOTAL ARTICLE 0225	443.500,00	15.000,00	0,00	458.500,00
	TOTAL CHAPTER 022	7.162.500,00	545.337,00	0,00	7.707.837,00
023..	CURRENT OPERATING EXPENDITURE				
02300	STATIONERY AND OFFICE SUPPLIES	1.324.000,00	50.500,00	0,00	1.273.500,00
0231.	POSTAL CHARGES AND TELECOMMUNICATIONS				
02310	POSTAGE ON CORRESPONDANCE AND DELIVERY CHARGES	656.000,00	8.000,00	0,00	664.000,00
02311	TELEPHONE, TELEGRAPH, TELEFAX, TELEVISION	1.350.000,00	813.000,00	0,00	2.163.000,00
	TOTAL ARTICLE 0231	2.006.000,00	821.000,00	0,00	2.827.000,00
0232.	FINANCIAL CHARGES				
02320	BANK CHARGES	6.000,00	10.000,00	0,00	16.000,00
02321	EXCHANGE LOSSES	0,00	310.000,00	0,00	310.000,00
	TOTAL ARTICLE 0232	6.000,00	320.000,00	0,00	326.000,00
02330	LEGAL EXPENSES	38.000,00	0,00	0,00	38.000,00
02340	DAMAGES	0,00	500,00	0,00	500,00
0235.	OTHER OPERATING EXPENDITURE				
02350	MISCELLANEOUS INSURANCE	40.000,00	8.000,00	0,00	32.000,00
02351	UNIFORMS AND WORKING CLOTHES	178.000,00	10.000,00	0,00	168.000,00

(IN ECU)

EVOLUTION OF APPROPRIATIONS IN THE YEAR 1981

TABLE 2

CHAPTER ARTICLE ITEM	DESCRIPTION	INITIAL APPROPR- ATIONS	CHANGES IN APPROPRIATIONS BY TRANSFERS	SUPPLEMENTARY BUDGET	FINAL APPROPR- ATIONS FOR THE YEAR 81
1-2-3	4	5	6	7	8
02352	MISCELLANEOUS EXPENDITURE ON INTERNAL MEETINGS	114.000,00	0,00	0,00	114.000,00
02353	DEPARTMENTAL REMOVALS	118.000,00	50.000,00	0,00	168.000,00
02354	PETTY EXPENSES	71.000,00	0,00	0,00	71.000,00
02359	OTHER OPERATING EXPENDITURE (CONTRIBUTION TO SECRETARIAL EXPENSES OF THE PRESIDENT'S OFFICE)	14.300,00	0,00	0,00	14.300,00
	TOTAL ARTICLE 0235	535.300,00	32.000,00	0,00	567.300,00
	TOTAL CHAPTER 023	3.909.300,00	1.123.000,00	0,00	5.032.300,00
024..	ENTERTAINMENT AND REPRESENTATION EXPENSES				
0240.	ENTERTAINMENT AND REPRESENTATION EXPENSES				
02400	MEMBERS OF THE INSTITUTION	380.000,00	0,00	0,00	380.000,00
02401	STAFF	26.000,00	0,00	0,00	26.000,00
02402	FUND FOR EXPENSES IN ACCORDANCE WITH RULE 53 OF THE RULES OF PROCEDURE OF THE EUROPEAN PARLIAMENT	18.000,00	0,00	0,00	18.000,00
	TOTAL ARTICLE 0240	424.000,00	0,00	0,00	424.000,00
	TOTAL CHAPTER 024	424.000,00	0,00	0,00	424.000,00
025..	EXPENDITURE ON FORMAL AND OTHER MEETINGS				
02500	EXPENDITURE ON FORMAL MEETINGS AND MEETINGS IN GENERAL	48.000,00	0,00	0,00	48.000,00
02550	MISCELLANEOUS EXPENDITURE ON ORGANIZATION OF AND PARTICIPATION IN CONFERENCES AND CONGRESSES AND IN MEETINGS ORGANIZED OUTSIDE THE PLACES OF WORK OF THE INSTITUTION	285.000,00	0,00	0,00	285.000,00
	TOTAL CHAPTER 025	333.000,00	0,00	0,00	333.000,00

(IN ECU)

EVOLUTION OF APPROPRIATIONS IN THE YEAR 1981

TABLE 2

CHAPTER ARTICLE ITEM	DESCRIPTION	INITIAL APPROPR- ATIONS	CHANGES IN APPROPRIATIONS BY TRANSFERS	SUPPLEMENTARY BUDGET	FINAL APPROPRIATIONS FOR THE YEAR 81
1-2-3	4	5	6	7	8
026..	EXPENDITURE ON STUDIES, SURVEYS AND CONSULTATIONS				
02600	LIMITED CONSULTATIONS, STUDIES AND SURVEYS	30.000,00	100.000,00	0,00	130.000,00
	TOTAL CHAPTER 026	30.000,00	100.000,00	0,00	130.000,00
027..	EXPENDITURE ON PUBLISHING AND INFORMATION				
02700	OFFICIAL JOURNAL	2.310.000,00	300.000,00	0,00	2.610.000,00
0271.	PUBLICATIONS				
02710	PUBLICATIONS OF A GENERAL NATURE	2.976.000,00	300.000,00	0,00	3.276.000,00
02719	EXPENDITURE ON PUBLICITY FOR AND PROMOTION OF PUBLICATIONS	262.000,00	0,00	0,00	262.000,00
	TOTAL ARTICLE 0271	3.238.000,00	300.000,00	0,00	3.538.000,00
0272.	EXPENDITURE ON THE DISSEMINATION OF INFORMATION AND PARTICIPATION IN PUBLIC EVENTS				
02720	EXPENDITURE ON INFORMATION, PUBLICITY AND PARTICIPATION IN PUBLIC EVENTS	716.000,00	0,00	0,00	716.000,00
02721	PARTICIPATION OF THE COMMUNITIES IN INTERNATIONAL EXHIBITIONS	1.000,00	0,00	0,00	1.000,00
	TOTAL ARTICLE 0272	717.000,00	0,00	0,00	717.000,00
	TOTAL CHAPTER 027	6.265.000,00	600.000,00	0,00	6.865.000,00
029..	SUBSIDIES AND FINANCIAL CONTRIBUTIONS				
0294.	STUDY GRANTS				
02940	RESEARCH AND STUDY GRANTS	75.000,00	0,00	0,00	75.000,00
02941	GRANTS FOR THE FURTHER TRAINING OF CONFERENCE INTERPRETERS	58.000,00	0,00	0,00	58.000,00
02942	OTHER GRANTS	190.000,00	0,00	0,00	190.000,00
	TOTAL ARTICLE 0294	323.000,00	0,00	0,00	323.000,00
0299.	OTHER SUBSIDIES				

(IN ECU)

EVOLUTION OF APPROPRIATIONS IN THE YEAR 1981

TABLE 2

CHAPTER ARTICLE ITEM	DESCRIPTION	INITIAL APPROPR- ATIONS	CHANGES IN APPROPRIATIONS BY TRANSFERS	SUPPLEMENTARY BUDGET	FINAL APPROPRIATIONS FOR THE YEAR 81
1-2-3	4	5	6	7	8
02990	SUBSIDIES AND FINANCIAL CONTRIBUTIONS TOWARDS THE COST OF GROUP VISITS	1.472.000,00	0,00	0,00	1.472.000,00
02991	SUBSIDIES TOWARDS THE COST OF VISITS BY "OPINION MULTIPLIERS" FROM THE MEMBER STATES	380.000,00	0,00	0,00	380.000,00
	TOTAL ARTICLE 0299	1.852.000,00	0,00	0,00	1.852.000,00
	TOTAL CHAPTER 029	2.175.000,00	0,00	0,00	2.175.000,00
	TOTAL TITLE 02	43.763.800,00	4.199.111,00	0,00	47.962.911,00

(IN ECU)

EVOLUTION OF APPROPRIATIONS IN THE YEAR 1981

TABLE 2

CHAPTER ARTICLE ITEM	DESCRIPTION	INITIAL APPROPR- ATIONS	CHANGES IN APPROPRIATIONS BY TRANSFERS	SUPPLEMENTARY BUDGET	FINAL APPROPRIATIONS FOR THE YEAR 81
1-2-3	4	5	6	7	8
03...	EXPENDITURE RESULTING FROM SPECIAL FUNCTIONS CARRIED OUT BY THE INSTITUTION				
037..	EXPENDITURE RELATING TO CERTAIN INSTITUTIONS AND BODIES				
0370.	SPECIAL EXPENDITURE OF THE EUROPEAN PARLIAMENT				
03700	EXPENDITURE ON INTER-PARLIAMENTARY INSTITUTIONS STIPULATED IN THE ACP-EEC CONVENTION OF LOME	760.000,00	0,00	0,00	760.000,00
03702	EXPENDITURE ON THE JOINT PARLIAMENTARY COMMITTEE PROVIDED FOR WITHIN THE FRAMEWORK OF THE ASSOCIATION WITH TURKEY	225.000,00	0,00	0,00	225.000,00
03704	EXPENDITURE ON PARLIAMENTARY CONTACTS SET UP UNDER THE ASSOCIATION WITH MALTA	28.000,00	0,00	0,00	28.000,00
03705	CONTRIBUTION TO SECRETARIAL EXPENSES OF THE POLITICAL GROUPS OF THE EUROPEAN PARLIAMENT	3.618.500,00	263.000,00	0,00	3.881.500,00
03706	OTHER POLITICAL ACTIVITIES	1.753.900,00	100.000,00	0,00	1.853.900,00
03707	EXPENDITURE ON CONTACTS BETWEEN MEMBERS OF THE EUROPEAN PARLIAMENT AND MEMBERS OF THE PARLIAMENTS OF THIRD COUNTRIES	356.000,00	0,00	0,00	356.000,00
	TOTAL ARTICLE 0370	6.741.400,00	363.000,00	0,00	7.104.400,00
	TOTAL CHAPTER 037	6.741.400,00	363.000,00	0,00	7.104.400,00
	TOTAL TITLE 03	6.741.400,00	363.000,00	0,00	7.104.400,00

(IN ECU)

EVOLUTION OF APPROPRIATIONS IN THE YEAR 1981

TABLE 2

CHAPTER ARTICLE ITEM	DESCRIPTION	INITIAL APPROPR- ATIONS	CHANGES IN APPROPRIATIONS BY TRANSFERS	SUPPLEMENTARY BUDGET	FINAL APPROPRIATIONS FOR THE YEAR 81
1-2-3	4	5	6	7	8
10...	OTHER EXPENDITURE				
100..	PROVISIONAL APPROPRIATIONS				
10000	PROVISIONAL APPROPRIATIONS	4.525.000,00	3.731.111,00	0,00	793.889,00
	TOTAL CHAPTER 100	4.525.000,00	3.731.111,00	0,00	793.889,00
101..	CONTINGENCY RESERVE				
10100	CONTINGENCY RESERVE	2.000.000,00	600.000,00	0,00	1.400.000,00
	TOTAL CHAPTER 101	2.000.000,00	600.000,00	0,00	1.400.000,00
	TOTAL TITLE 10	6.525.000,00	4.331.111,00	0,00	2.193.889,00
	GRAND TOTAL	199.400.879,00	0,00	0,00	199.400.879,00

CHAPTER ARTICLE ITEM	DESCRIPTION	TOTAL APPRO- PRIATIONS	COMMITMENTS	PAYMENTS	AMOUNTS UNPAID	CARRIED FORWARD - ART 6 OF FIN REG: APPROPRIATION			APPROPRIATION TO BE CANCELLED
						1(C) AUTO- MATICALLY	1(B) COMMTD. AFTER 15 DEC:	1(B) UN- COMMITTED:	
1-2-3	4	5	6	7	8	9	10	11	12
01...	EXPENDITURE RELATING TO PERSONS WORKING WITH THE INSTITUTION	:	:	:	:	:	:	:	:
010..	MEMBERS OF THE INSTITUTION	:	:	:	:	:	:	:	:
0100.	SALARIES, ALLOWANCES AND PAYMENTS RELATED TO SALARIES	:	:	:	:	:	:	:	:
01004	TRAVEL AND SUBSISTENCE ALLOWANCES ; ATTENDANCE AT MEETINGS AND ASSOCIATED EXPENDITURE	14.385.000:	12.309.591,16:	11.336.651,18:	972.939,98:	972.939,98:	0,00:	0:	2.075.408,84
01005	CONSTITUENCY WORK	2.083.200:	1.955.269,13:	1.955.269,13:	0,00:	0,00:	0,00:	0:	127.930,87
	TOTAL ARTICLE 0100	16.468.200:	14.264.860,29:	13.291.920,31:	972.939,98:	972.939,98:	0,00:	0:	2.203.339,71
01010	ACCIDENT AND SICKNESS INSURANCE AND OTHER SOCIAL SECURITY CHARGES	482.000:	446.514,98:	446.514,98:	0,00:	0,00:	0,00:	0:	35.485,02
0103.	PENSIONS	:	:	:	:	:	:	:	:
01032	SURVIVOR'S PENSIONS	125.000:	82.763,34:	82.763,34:	0,00:	0,00:	0,00:	0:	42.236,66
01050	LANGUAGE COURSES FOR MEMBERS	157.400:	157.347,64:	106.803,45:	50.544,19:	50.544,19:	0,00:	0:	52,36
01060	MEMBER'S SECRETARIAL EXPENSES	17.061.600:	16.713.222,25:	16.713.222,25:	0,00:	0,00:	0,00:	0:	348.377,75
01090	PROVISIONAL APPROPRIATIONS TO COVER ANY ADJUSTMENTS TO THE EMOLUMENTS OF MEMBERS OF THE EUROPEAN PARLIAMENT	1.500.000:	0,00:	0,00:	0,00:	0,00:	0,00:	0:	1.500.000,00
	TOTAL CHAPTER 010	35.794.200:	31.664.708,50:	30.641.224,33:	1.023.484,17:	1.023.484,17:	0,00:	0:	4.129.491,50
011..	STAFF	:	:	:	:	:	:	:	:
0110.	OFFICIALS AND TEMPORARY STAFF HOLDING A POST PROVIDED FOR IN THE LIST OF POSTS	:	:	:	:	:	:	:	:
01100	BASIC SALARIES	62.710.629:	53.599.961,29:	53.599.961,29:	0,00:	0,00:	0,00:	0:	9.110.667,71
01101	FAMILY ALLOWANCES	5.588.730:	4.659.683,44:	4.659.683,44:	0,00:	0,00:	0,00:	0:	929.046,56
01102	EXPATRIATION AND FOREIGN RESIDENCE ALLOWANCES; (INCLUDING THOSE GRANTED UNDER ART. 97 OF THE ECSC STAFF REGULATIONS)	9.846.045:	7.868.399,46:	7.868.399,46:	0,00:	0,00:	0,00:	0:	1.977.645,54
01103	SECRETARIAL ALLOWANCES	698.000:	616.402,26:	616.402,26:	0,00:	0,00:	0,00:	0:	81.597,74
	TOTAL ARTICLE 0110	78.843.404:	66.744.446,45:	66.744.446,45:	0,00:	0,00:	0,00:	0:	12.098.957,55

(IN ECU)

UTILISATION OF APPROPRIATIONS FOR THE YEAR 1981

TABLE 3

CHAPTER ARTICLE ITEM	DESCRIPTION	TOTAL		COMMITMENTS	PAYMENTS	AMOUNTS UNPAID	CARRIED FORWARD - ART 6 OF FIN REG: APPROPRIATION			
		APPRO- PRIATIONS					1(C) MATICALLY	1(B) AFTER 15 DEC	1(B) UN- COMMITTED	TO BE CANCELLED
		5	6	7	8	9	10	11	12	
0111.	OTHER STAFF									
01110	AUXILIARY STAFF	3.310.500:	3.216.300,03:	3.214.425,52:	1.874,51:	1.874,51:	0,00:	0:	94.199,97	
01112	LOCAL STAFF	50.000:	4.888,62:	4.888,62:	0,00:	0,00:	0,00:	0:	45.111,38	
01113	SPECIAL ADVISORS	28.000:	15.388,08:	15.388,08:	0,00:	0,00:	0,00:	0:	12.611,90	
	TOTAL ARTICLE 0111	3.388.500:	3.236.576,73:	3.234.702,22:	1.874,51:	1.874,51:	0,00:	0:	151.923,27	
0113.	INSURANCE AGAINST SICKNESS ACCIDENTS, AND OCCUPATIONAL DISEASES									
01130	INSURANCE AGAINST SICKNESS	2.000.115:	1.643.279,03:	1.643.279,03:	0,00:	0,00:	0,00:	0:	356.835,97	
01131	INSURANCE AGAINST ACCIDENTS AND OCCUPATIONAL DISEASES	665.710:	394.562,76:	394.562,76:	0,00:	0,00:	0,00:	0:	271.147,24	
	TOTAL ARTICLE 0113	2.665.825:	2.037.841,79:	2.037.841,79:	0,00:	0,00:	0,00:	0:	627.983,21	
0114.	MISCELLANEOUS ALLOWANCES AND GRANTS									
01140	BIRTH AND DEATH GRANTS	38.000:	15.199,29:	15.199,29:	0,00:	0,00:	0,00:	0:	22.800,71	
01141	ANNUAL LEAVE TRAVEL EXPENSES	924.000:	727.747,73:	727.747,73:	0,00:	0,00:	0,00:	0:	196.252,27	
01143	FIXED ENTERTAINMENT ALLOWANCES	102.500:	82.195,08:	82.195,08:	0,00:	0,00:	0,00:	0:	20.304,92	
01144	FIXED TRAVEL ALLOWANCES	44.000:	33.305,07:	33.305,07:	0,00:	0,00:	0,00:	0:	10.694,93	
01145	SPECIAL ALLOWANCE IN ACCORDANCE WITH ARTICLE 70 OF THE FINANCIAL REGULATION	20.000:	18.526,22:	18.526,22:	0,00:	0,00:	0,00:	0:	1.473,78	
01146	PAYMENTS PROVIDED FOR BY ARTICLE 42 OF THE CONDITIONS OF EMPLOYMENT OF OTHER SERVANTS OF THE COMMUNITIES	13.000:	2.336,70:	2.336,70:	0,00:	0,00:	0,00:	0:	10.663,30	
	TOTAL ARTICLE 0114	1.141.500:	879.310,09:	879.310,09:	0,00:	0,00:	0,00:	0:	262.189,91	
01150	OVERTIME	1.076.000:	910.682,21:	910.682,21:	0,00:	0,00:	0,00:	0:	165.317,79	
01160	WEIGHTINGS	2.700.000:	2.151.408,86:	2.151.408,86:	0,00:	0,00:	0,00:	0:	548.591,14	
0117.	SUPPLEMENTARY SERVICES									
01170	FREELANCE INTERPRETERS AND CONFERENCE TECHNICIANS	3.560.000:	3.544.502,91:	2.069.608,16:	1.474.894,75:	1.474.894,75:	0,00:	0:	15.497,05	
01172	OTHER SERVICES AND WORK SENT OUT FOR TRANSLATION AND TYPING	346.750:	340.096,98:	274.096,98:	66.000,00:	66.000,00:	0,00:	0:	6.653,02	
	TOTAL ARTICLE 0117	3.906.750:	3.884.599,89:	2.343.705,14:	1.540.894,75:	1.540.894,75:	0,00:	0:	22.150,11	

CHAPTER ARTICLE ITEM	DESCRIPTION	TOTAL	COMMITMENTS	PAYMENTS	AMOUNTS UNPAID	CARRIED FORWARD - ART 6 OF FIN REG:		APPROPRIATION	TO BE CANCELLED
		APPRO- PRIATIONS				1(C) AUTO- MATICALLY	1(B) COMMTS. AFTER 15 DEC:	1(B) UN- COMMITTED	
1-2-3	4	5	6	7	8	9	10	11	12
01190	PROVISIONAL APPROPRIATIONS TO COVER ANY ADJUSTMENTS TO THE REMUNERATION OF OFFICIALS AND OTHER SERVANTS	2.800.000:	0,00:	0,00:	0,00:	0,00:	0,00:	0,00:	0: 2.800.000,00
	TOTAL CHAPTER 011	96.521.979:	79.844.866,02:	78.302.096,76:	1.542.769,26:	1.542.769,26:	0,00:	0:16.677.112,98	
012..	ALLOWANCES AND EXPENSES ON ENTERING AND LEAVING THE SERVICE AND ON TRANSFER								
01200	MISCELLANEOUS EXPENDITURE ON STAFF RECRUITMENT	300.000:	279.161,39:	184.532,91:	94.628,48:	94.628,48:	0,00:	0:	20.838,61
0121.	TRAVEL EXPENSES (INCLUDING FAMILY MEMBERS)								
01211	STAFF	67.000:	56.800,14:	56.800,14:	0,00:	0,00:	0,00:	0:	10.199,86
0122.	INSTALLATION, RESETTLEMENT AND TRANSFER ALLOWANCES								
01221	STAFF	500.000:	497.609,12:	497.609,12:	0,00:	0,00:	0,00:	0:	2.390,88
0123.	REMOVAL EXPENSES								
01231	STAFF	189.000:	188.266,28:	139.302,28:	48.964,00:	48.964,00:	0,00:	0:	733,72
0124.	TEMPORARY DAILY SUBSISTENCE ALLOWANCES								
01241	STAFF	761.000:	756.440,33:	651.853,20:	104.587,13:	104.587,13:	0,00:	0:	4.559,67
01250	ALLOWANCES FOR STAFF ASSIGNED NON-ACTIVEIVE STATUS, RETIRED IN THE INTERESTS OF THE SERVICE OR DISMISSED	420.000:	353.854,32:	353.854,32:	0,00:	0,00:	0,00:	0:	66.145,68
	TOTAL CHAPTER 012	2.237.000:	2.132.131,58:	1.883.951,97:	248.179,61:	248.179,61:	0,00:	0:	104.868,42
013..	EXPENDITURE RELATING TO MISSIONS AND DUTY TRAVEL								
0130.	MISSION EXPENSES, TRAVEL EXPENSES AND INCIDENTAL EXPENDITURE								
01301	STAFF	6.375.000:	6.345.506,31:	5.524.602,46:	820.903,85:	820.903,85:	0,00:	0:	29.493,69
	TOTAL CHAPTER 013	6.375.000:	6.345.506,31:	5.524.602,46:	820.903,85:	820.903,85:	0,00:	0:	29.493,69
014..	EXPENDITURE ON SOCIAL WELFARE								
01400	SPECIAL ASSISTANCE GRANTS	11.500:	7.200,16:	6.233,57:	966,59:	966,59:	0,00:	0:	4.299,84
01410	SOCIAL CONTACTS BETWEEN STAFF	57.000:	33.480,90:	33.480,90:	0,00:	0,00:	0,00:	0:	23.519,10

(IN ECU)

UTILISATION OF APPROPRIATIONS FOR THE YEAR 1981

TABLE

CHAPTER ARTICLE ITEM	DESCRIPTION	TOTAL APPROPRIATIONS	COMMITMENTS	PAYMENTS	AMOUNTS UNPAID	CARRIED FORWARD - 1(C) AUTO- MATICALLY	1(B) COMMTD. AFTER 15 DEC	1(B) UN- COMMITTED	APPROPRIATI TO BE CANCELLED
1-2-3	4	5	6	7	8	9	10	11	12
01420	RESTAURANTS AND CANTEENS	300.000	299.656,99	122.222,54	177.434,45	177.434,45	0,00	0	343,
01430	MEDICAL SERVICE	100.000	60.353,93	51.296,58	9.057,35	9.057,35	0,00	0	39.446,
0149.	OTHER SOCIAL EXPENDITURE								
01490	OTHER EXPENDITURE	360.000	306.328,44	269.376,74	36.951,70	36.951,70	0,00	0	53.671,
	TOTAL CHAPTER 014	828.500	707.020,42	482.610,33	224.410,09	224.410,09	0,00	0	121.479,
015..	IN-SERVICE TRAINING AND FURTHER TRAINING FOR STAFF								
01500	COST OF ORGANISING IN-SERVICE TRAINING	150.000	104.018,84	104.018,84	0,00	0,00	0,00	0	45.981,1
01510	LANGUAGE COURSES, RETRAINING, FURTHER TRAINING AND INFORMATION FOR STAFF	233.000	218.322,04	174.186,01	44.136,03	44.136,03	0,00	0	14.677,9
	TOTAL CHAPTER 015	383.000	322.340,88	278.204,85	44.136,03	44.136,03	0,00	0	60.659,1
	TOTAL TITLE 01	142.139.679	121.016.573,71	117.112.690,70	3.903.883,01	3.903.883,01	0,00	0	21.123.105,

- 34 -

(IN ECU)

UTILISATION OF APPROPRIATIONS FOR THE YEAR 1981

TABLE 3

CHAPTER ARTICLE ITEM	DESCRIPTION	UTILISATION OF APPROPRIATIONS FOR THE YEAR 1981								
		TOTAL APPROPRIATIONS	COMMITMENTS	PAYMENTS	AMOUNTS UNPAID	CARRIED FORWARD - 1(C) AUTO- MATICALLY	ART 6 OF FIN REG- 1(B) COMMITD. AFTER 15 DEC:	1(B) UN- COMMITTED:	TO BE CANCELLED	
1-2-3	4	5	6	7	8	9	10	11	12	
02...	BUILDINGS, EQUIPMENT AND MISCELLANEOUS OPERATING EXPENDITURE									
020..	IMMOVABLE PROPERTY INVESTMENTS, RENTAL OF BUILDINGS AND ASSOCIATED EXPENDITURE									
0200.	RENT									
02000	RENT	15.504.500	15.176.869,56	13.731.809,06	1.445.060,50	1.445.060,50	0,00	0	327.630,44	
02010	INSURANCE	72.500	63.498,02	63.498,02	0,00	0,00	0,00	0	9.001,98	
02020	WATER, GAS, ELECTRICITY AND HEATING	1.900.000	1.751.509,19	1.198.260,62	553.248,57	553.248,57	0,00	0	148.490,81	
02030	CLEANING AND MAINTENANCE	3.700.000	2.872.137,18	1.895.064,65	977.072,53	977.072,53	0,00	0	827.862,82	
02040	FITTING-OUT OF PREMISES	2.005.774	1.438.981,84	781.808,02	657.173,82	657.173,82	0,00	480.000	86.792,16	
02050	SECURITY AND SURVEILLANCE OF BUILDINGS	1.250.000	1.243.849,19	1.087.107,58	156.741,61	156.741,61	0,00	0	6.150,81	
02060	ACQUISITION OF IMMOVABLE PROPERTY	350.000	350.000,00	0,00	350.000,00	350.000,00	0,00	0	0,00	
02090	OTHER EXPENDITURE	513.000	414.621,51	94.532,60	320.088,91	320.088,91	0,00	0	98.378,49	
	TOTAL CHAPTER 020	25.295.774	23.311.466,49	18.852.080,55	4.459.385,94	4.459.385,94	0,00	480.000	1.504.307,51	
022..	MOVABLE PROPERTY AND ASSOCIATED EXPENDITURE									
0220.	OFFICE MACHINES									
02200	NEW PURCHASES	350.000	336.871,41	313.330,97	23.540,44	23.540,44	0,00	0	13.128,59	
02201	REPLACEMENTS	485.000	416.407,10	15.415,86	400.991,24	400.991,24	0,00	0	68.592,90	
02202	HIRE	1.000	0,00	0,00	0,00	0,00	0,00	0	1.000,00	
02203	MAINTENANCE, USE AND REPAIR	140.000	124.869,10	109.925,40	14.943,70	14.943,70	0,00	0	15.130,90	
	TOTAL ARTICLE 0220	976.000	878.147,61	438.672,23	439.475,38	439.475,38	0,00	0	97.852,39	
0221.	FURNITURE									
02210	NEW PURCHASES	840.337	792.627,70	493.946,29	298.681,41	298.681,41	0,00	0	47.709,30	
02211	REPLACEMENTS	66.000	60.860,19	16.050,17	44.810,02	44.810,02	0,00	0	5.139,81	

35

PE 77.294/Fin./Ann.

CHAPTER ARTICLE ITEM	DESCRIPTION	TOTAL		COMMITMENTS	PAYMENTS	AMOUNTS UNPAID	CARRIED FORWARD - ART 6 OF FIN REG: APPROPRIATION			TO BE CANCELLED						
		APPRO- PRIATIONS	:				1 (A) AUTO- MATICALLY	1 (B) COMMTD. AFTER 15 DEC:	1 (B) UN- COMMITTED:							
1-2-3	4	5	:	6	:	7	:	8	:	9	:	10	:	11	:	12
02212	HIRE	5.000:	:	4.788,13:	:	1.061,68:	:	3.726,45:	:	3.726,45:	:	0,00:	:	0:	:	211,87
02213	MAINTENANCE, USE AND REPAIR	10.000:	:	6.675,75:	:	5.538,59:	:	1.137,16:	:	1.137,16:	:	0,00:	:	0:	:	3.324,25
	TOTAL ARTICLE 0221	921.337:	:	864.951,77:	:	516.596,73:	:	348.355,04:	:	348.355,04:	:	0,00:	:	0:	:	56.385,23
0222.	TECHNICAL EQUIPMENT AND INSTALLATION	:	:	:	:	:	:	:	:	:	:	:	:	:	:	:
02220	NEW PURCHASES	1.880.000:	:	1.655.585,47:	:	620.994,07:	:	1.034.591,40:	:	1.034.591,40:	:	0,00:	:	190.000:	:	34.414,53
02221	REPLACEMENTS	119.000:	:	22.402,27:	:	18.813,72:	:	3.588,55:	:	3.588,55:	:	0,00:	:	0:	:	96.557,73
02222	HIRE	1.110.000:	:	852.855,98:	:	651.985,14:	:	200.870,84:	:	200.870,84:	:	0,00:	:	0:	:	257.144,02
02223	MAINTENANCE, USE AND REPAIR	465.000:	:	352.082,45:	:	235.487,01:	:	116.595,44:	:	116.595,44:	:	0,00:	:	0:	:	112.717,55
	TOTAL ARTICLE 0222	3.574.000:	:	2.882.926,17:	:	1.527.279,94:	:	1.355.646,23:	:	1.355.646,23:	:	0,00:	:	190.000:	:	501.073,83
0223.	TRANSPORT EQUIPMENT	:	:	:	:	:	:	:	:	:	:	:	:	:	:	:
02230	NEW PURCHASES	175.000:	:	114.944,26:	:	85.443,29:	:	29.500,97:	:	29.500,97:	:	0,00:	:	0:	:	60.055,74
02231	REPLACEMENTS	204.000:	:	180.181,02:	:	61.925,99:	:	118.255,03:	:	118.255,03:	:	0,00:	:	0:	:	23.818,98
02232	HIRE	430.000:	:	287.820,31:	:	238.024,57:	:	49.795,74:	:	49.795,74:	:	0,00:	:	0:	:	142.179,69
02233	MAINTENANCE, USE AND REPAIR	520.000:	:	271.537,87:	:	232.733,04:	:	38.804,83:	:	38.804,83:	:	0,00:	:	0:	:	248.462,13
	TOTAL ARTICLE 0223	1.329.000:	:	854.483,46:	:	618.126,89:	:	236.356,57:	:	236.356,57:	:	0,00:	:	0:	:	474.511,64
0224.	EQUIPMENT, OPERATING COSTS AND SERVICES RELATING IN DATA-PROCESSING	:	:	:	:	:	:	:	:	:	:	:	:	:	:	:
02240	NEW PURCHASES	76.000:	:	73.638,65:	:	53.014,29:	:	20.624,36:	:	20.624,36:	:	0,00:	:	0:	:	2.361,35
02242	HIRE AND MAINTENANCE OF EQUIPMENT	188.000:	:	175.702,80:	:	170.232,48:	:	5.470,32:	:	5.470,32:	:	0,00:	:	0:	:	12.297,20
02243	DEVELOPMENT AND MAINTENANCE OF APPLICATIONS	172.000:	:	163.257,58:	:	24.339,18:	:	138.918,40:	:	138.918,40:	:	0,00:	:	0:	:	8.742,42
02244	INTERROGATION OF DATA BASES	13.000:	:	5.000,00:	:	2.817,71:	:	2.182,29:	:	2.182,29:	:	0,00:	:	0:	:	8.000,00
	TOTAL ARTICLE 0224	449.000:	:	417.599,03:	:	250.403,66:	:	167.195,37:	:	167.195,37:	:	0,00:	:	0:	:	31.460,97
0225.	DOCUMENTATION AND LIBRARY EXPENDITURE	:	:	:	:	:	:	:	:	:	:	:	:	:	:	:
02250	LIBRARY EXPENSES, PURCHASE OF BOOKS	123.000:	:	122.552,24:	:	89.802,63:	:	32.749,61:	:	32.749,61:	:	0,00:	:	0:	:	47,76

(IN ECU)

UTILISATION OF APPROPRIATIONS FOR THE YEAR 1981

TABLE 3

CHAPTER ARTICLE ITEM	DESCRIPTION	TOTAL APPROPRIATIONS	COMMITMENTS	PAYMENTS	AMOUNTS UNPAID	CARRIED FORWARD - ART 6 OF FIN RES: APPROPRIATION			TO BE CANCELLED
						1(C) AUTO- MATICALLY	1(B) COMMTI. AFTER 15 DEC:	1(B) UN- COMMITTED:	
1-2-3	4	5	6	7	8	9	10	11	12
02251	SPECIAL LIBRARY DOCUMENTATION AND REPRODUCTION EQUIPMENT	13.500:	13.479,80:	10.727,21:	2.752,59:	2.752,59:	0,00:	0:	20,20
02252	SUBSCRIPTIONS TO NEWSPAPERS, PERIODICALS	113.000:	112.682,11:	107.539,45:	5.142,66:	5.142,66:	0,00:	0:	317,89
02253	SUBSCRIPTIONS TO NEWS AGENCIES	200.000:	199.785,59:	171.919,92:	27.865,67:	27.865,67:	0,00:	0:	214,41
02254	BINDING AND UPKEEP OF LIBRARY BOOKS	9.000:	9.000,00:	1.946,77:	7.053,23:	7.053,23:	0,00:	0:	0,00
	TOTAL ARTICLE 0225	458.500:	457.499,74:	381.935,98:	75.563,76:	75.563,76:	0,00:	0:	1.000,26
	TOTAL CHAPTER 022	7.707.837:	6.355.607,78:	3.733.015,43:	2.622.592,35:	2.622.592,35:	0,00:	190.000:	1.162.229,22
023..	CURRENT OPERATING EXPENDITURE								
02300	STATIONERY AND OFFICE SUPPLIES	1.273.500:	1.242.525,73:	1.112.061,07:	130.464,66:	130.464,66:	0,00:	0:	30.974,27
0231.	POSTAL CHARGES AND TELECOMMUNICATIONS								
02310	POSTAGE ON CORRESPONDANCE AND DELIVERY CHARGES	644.000:	653.872,43:	475.552,36:	178.320,07:	178.320,07:	0,00:	0:	10.127,57
02311	TELEPHONE, TELEGRAPH, TELEX, TELEVISION	2.163.000:	1.878.152,32:	1.409.697,99:	468.454,33:	468.454,33:	0,00:	0:	284.847,68
	TOTAL ARTICLE 0231	2.827.000:	2.532.024,75:	1.885.250,35:	646.774,40:	646.774,40:	0,00:	0:	294.975,25
0232.	FINANCIAL CHARGES								
02320	BANK CHARGES	16.000:	12.948,25:	12.948,25:	0,00:	0,00:	0,00:	0:	3.051,75
02321	EXCHANGE LOSSES	310.000:	310.000,00:	310.000,00:	0,00:	0,00:	0,00:	0:	0,00
	TOTAL ARTICLE 0232	326.000:	322.948,25:	322.948,25:	0,00:	0,00:	0,00:	0:	3.051,75
02330	LEGAL EXPENSES	38.000:	26.566,21:	23.976,76:	2.589,45:	2.589,45:	0,00:	0:	11.433,79
02340	DAMAGES	500:	54,46:	54,46:	0,00:	0,00:	0,00:	0:	445,54
0235.	OTHER OPERATING EXPENDITURE								
02350	MISCELLANEOUS INSURANCE	32.000:	21.978,81:	18.581,70:	3.397,11:	3.397,11:	0,00:	0:	10.021,19
02351	UNIFORMS AND WORKING CLOTHES	168.000:	123.046,14:	105.359,49:	17.686,65:	17.686,65:	0,00:	0:	44.953,86

(IN ECU)

UTILISATION OF APPROPRIATIONS FOR THE YEAR 1981

TABLE 3

CHAPTER ARTICLE ITEM	DESCRIPTION	TOTAL	COMMITMENTS	PAYMENTS	AMOUNTS UNPAID	CARRIED FORWARD - ART 6 OF FIM REG: APPROPRIATION			TO BE CANCELLED
		APPRO- PRIATIONS				1(C) AUTO- MATICALLY	1(B) COMMTD. AFTER 15 DEC:	1(B) UN- COMMITTED:	
1-2-3	4	5	6	7	8	9	10	11	12
02352	MISCELLANEOUS EXPENDITURE ON INTERNAL MEETINGS	114.000:	112.228,35:	104.004,57:	8.223,78:	8.223,78:	0,00:	0:	1.771,65
02353	DEPARTMENTAL REMOVALS	168.000:	136.124,43:	100.952,76:	35.171,67:	35.171,67:	0,00:	0:	31.875,57
02354	PETTY EXPENSES	71.000:	70.890,61:	38.510,08:	32.380,53:	32.380,53:	0,00:	0:	109,39
02359	OTHER OPERATING EXPENDITURE (CONTRIBUTION TO SECRETARIAL EXPENSES OF THE PRESIDENT'S OFFICE)	14.300:	14.300,00:	14.300,00:	0,00:	0,00:	0,00:	0:	0,00
	TOTAL ARTICLE 0235	567.300:	478.568,34:	381.708,60:	96.859,74:	96.859,74:	0,00:	0:	88.731,66
	TOTAL CHAPTER 023	5.032.300:	4.602.687,74:	3.725.999,49:	876.688,25:	876.688,25:	0,00:	0:	429.612,26
024..	ENTERTAINMENT AND REPRESENTATION EXPENSES	:	:	:	:	:	:	:	:
0240.	ENTERTAINMENT AND REPRESENTATION EXPENSES	:	:	:	:	:	:	:	:
02400	MEMBERS OF THE INSTITUTION	380.000:	268.581,62:	173.183,44:	95.398,18:	95.398,18:	0,00:	0:	111.418,38
02401	STAFF	26.000:	12.422,33:	11.078,91:	1.343,42:	1.343,42:	0,00:	0:	13.577,67
02402	FUND FOR EXPENSES IN ACCORDANCE WITH RULE 53 OF THE RULES OF PROCEDURE OF THE EUROPEAN PARLIAMENT	18.000:	18.000,00:	18.000,00:	0,00:	0,00:	0,00:	0:	0,00
	TOTAL ARTICLE 0240	424.000:	299.003,95:	202.262,35:	96.741,60:	96.741,60:	0,00:	0:	124.996,05
	TOTAL CHAPTER 024	424.000:	299.003,95:	202.262,35:	96.741,60:	96.741,60:	0,00:	0:	124.996,05
025..	EXPENDITURE ON FORMAL AND OTHER MEETINGS	:	:	:	:	:	:	:	:
02500	EXPENDITURE ON FORMAL MEETINGS AND MEETINGS IN GENERAL	48.000:	47.561,94:	37.330,38:	10.231,56:	10.231,56:	0,00:	0:	438,06
02550	MISCELLANEOUS EXPENDITURE ON ORGANIZATION OF AND PARTICIPATION IN CONFERENCES AND CONGRESSES AND IN MEETINGS ORGANIZED OUTSIDE THE PLACES OF WORK OF THE INSTITUTION	285.000:	284.615,09:	214.699,51:	69.915,58:	69.915,58:	0,00:	0:	384,91
	TOTAL CHAPTER 025	333.000:	332.177,03:	252.029,89:	80.147,14:	80.147,14:	0,00:	0:	822,97

(IN ECU)

UTILISATION OF APPROPRIATIONS FOR THE YEAR 1981

TABLE 3

CHAPTER ARTICLE ITEM	DESCRIPTION	TOTAL	COMMITMENTS	PAYMENTS	AMOUNTS UNPAID	CARRIED FORWARD - ART 6 OF FIN REG:		APPROPRIATION TO BE CANCELLED	
		APPRO- PRIATIONS				1(C) AUTO- MATICALLY	1(B) COMMTD. AFTER 15 DEC:	1(B) UN- COMMITTED:	
1-2-3	4	5	6	7	8	9	10	11	12
026..	EXPENDITURE ON STUDIES, SURVEYS AND CONSULTATIONS								
02600	LIMITED CONSULTATIONS, STUDIES AND SURVEYS	130.000:	109.727,41:	9.727,41:	100.000,00:	100.000,00:	0,00:	0:	20.272,59
	TOTAL CHAPTER 026	130.000:	109.727,41:	9.727,41:	100.000,00:	100.000,00:	0,00:	0:	20.272,59
027..	EXPENDITURE ON PUBLISHING AND INFORMATION								
02700	OFFICIAL JOURNAL	2.610.000:	2.609.379,07:	2.205.977,99:	403.401,08:	403.401,08:	0,00:	0:	620,93
0271.	PUBLICATIONS								
02710	PUBLICATIONS OF A GENERAL NATURE	3.276.000:	3.064.271,21:	1.735.121,12:	1.329.150,09:	1.329.150,09:	0,00:	0:	211.728,79
02719	EXPENDITURE ON PUBLICITY FOR AND PROMOTION OF PUBLICATIONS	262.000:	259.992,26:	160.548,06:	99.444,20:	99.444,20:	0,00:	0:	2.007,74
	TOTAL ARTICLE 0271	3.538.000:	3.324.263,47:	1.895.669,18:	1.428.594,29:	1.428.594,29:	0,00:	0:	213.736,53
0272.	EXPENDITURE ON THE DISSEMINATION OF INFORMATION AND PARTICIPATION IN PUBLIC EVENTS								
02720	EXPENDITURE ON INFORMATION, PUBLICITY AND PARTICIPATION IN PUBLIC EVENTS	716.000:	702.069,77:	407.898,66:	294.171,11:	294.171,11:	0,00:	0:	13.930,23
02721	PARTICIPATION OF THE COMMUNITIES IN INTERNATIONAL EXHIBITIONS	1.000:	0,00:	0,00:	0,00:	0,00:	0,00:	0:	1.000,00
	TOTAL ARTICLE 0272	717.000:	702.069,77:	407.898,66:	294.171,11:	294.171,11:	0,00:	0:	14.930,23
	TOTAL CHAPTER 027	6.865.000:	6.635.712,31:	4.509.545,83:	2.126.166,48:	2.126.166,48:	0,00:	0:	229.287,69
029..	SUBSIDIES AND FINANCIAL CONTRIBUTIONS								
0294.	STUDY GRANTS								
02940	RESEARCH AND STUDY GRANTS	75.000:	71.475,86:	65.898,51:	5.577,35:	5.577,35:	0,00:	0:	3.524,14
02941	GRANTS FOR THE FURTHER TRAINING OF CONFERENCE INTERPRETERS	58.000:	50.000,26:	34.522,60:	15.477,66:	15.477,66:	0,00:	0:	7.999,74
02942	OTHER GRANTS	190.000:	129.687,51:	101.876,91:	27.810,60:	27.810,60:	0,00:	0:	60.312,49
	TOTAL ARTICLE 0294	323.000:	251.163,63:	202.298,02:	48.865,61:	48.865,61:	0,00:	0:	71.836,37
0299.	OTHER SUBSIDIES								

(IN ECU)

UTILISATION OF APPROPRIATIONS FOR THE YEAR 1981

TABLE 3

CHAPTER ARTICLE ITEM	DESCRIPTION	: TOTAL :		: PAYMENTS :	: AMOUNTS UNPAID :	: CARRIED FORWARD - ART 6 OF FIN REG: APPROPRIATION			: TO BE CANCELLED :
		: APPRO- PRIATIONS :	: COMMITMENTS :			: 1(C) AUTO- MATICALLY :	: 1(B) COMMTD. AFTER 15 DEC: COMMITTED:	: 1(B) UN- COMMITTED:	
1-2-3	4	: 5	: 6	: 7	: 8	: 9	: 10	: 11	: 12
02990	SUBSIDIES AND FINANCIAL CONTRIBUTIONS TOWARDS THE COST OF GROUP VISITS	: 1.472.000:	: 1.420.759,24:	: 1.192.851,26:	: 227.907,98:	: 227.907,98:	: 0,00:	: 0:	: 51.240,76
02991	SUBSIDIES TOWARDS THE COST OF VISITS BY "OPINION MULTIPLIERS" FROM THE MEMBER STATES	: 380.000:	: 290.000,00:	: 188.557,19:	: 101.442,81:	: 101.442,81:	: 0,00:	: 0:	: 90.000,00
	TOTAL ARTICLE 0299	: 1.852.000:	: 1.710.759,24:	: 1.381.408,45:	: 329.350,79:	: 329.350,79:	: 0,00:	: 0:	: 141.240,76
	TOTAL CHAPTER 029	: 2.175.000:	: 1.961.922,87:	: 1.583.706,47:	: 378.216,40:	: 378.216,40:	: 0,00:	: 0:	: 213.077,13
	TOTAL TITLE 02	: 47.962.911:	: 43.608.305,58:	: 32.868.367,42:	: 10.739.938,16:	: 10.739.938,16:	: 0,00:	: 670.000:	: 3.684.605,42

(IN ECU)

UTILISATION OF APPROPRIATIONS FOR THE YEAR 1981

TABLE 3

CHAPTER ARTICLE ITEM	DESCRIPTION	TOTAL		PAYMENTS	AMOUNTS UNPAID	CARRIED FORWARD - ART 6 OF FIN REG: APPROPRIATION			TO BE CANCELLED
		APPRO- PRIATIONS	COMMITMENTS			1(C) AUTO- MATICALLY	1(B) COMMTD. AFTER 15 DEC:	1(B) UN- COMMITTED	
1-2-3	4	5	6	7	8	9	10	11	12
03...	EXPENDITURE RESULTING FROM SPECIAL FUNCTIONS CARRIED OUT BY THE INSTITUTION								
03...	EXPENDITURE RELATING TO CERTAIN INSTITUTIONS AND BODIES								
0370.	SPECIAL EXPENDITURE OF THE EUROPEAN PARLIAMENT								
03700	EXPENDITURE ON INTER-PARLIAMENTARY INSTITUTIONS STIPULATED IN THE ACP-EEC CONVENTION OF LOME	760.000:	661.993,16:	428.109,65:	233.883,51:	233.883,51:	0,00:	0:	98.006,84
03702	EXPENDITURE ON THE JOINT PARLIAMENTARY COMMITTEE PROVIDED FOR WITHIN THE FRAMEWORK OF THE ASSOCIATION WITH TURKEY	225.000:	0,00:	0,00:	0,00:	0,00:	0,00:	0:	225.000,00
03704	EXPENDITURE ON PARLIAMENTARY CONTACTS SET UP UNDER THE ASSOCIATION WITH MALTA	28.000:	0,00:	0,00:	0,00:	0,00:	0,00:	0:	28.000,00
03705	CONTRIBUTION TO SECRETARIAL EXPENSES OF THE POLITICAL GROUPS OF THE EUROPEAN PARLIAMENT	3.881.500:	3.881.500,00:	3.278.137,44:	603.362,56:	603.362,56:	0,00:	0:	0,00
03706	OTHER POLITICAL ACTIVITIES	1.853.900:	1.853.900,00:	1.746.479,36:	107.420,64:	107.420,64:	0,00:	0:	0,00
03707	EXPENDITURE ON CONTACTS BETWEEN MEMBERS OF THE EUROPEAN PARLIAMENT AND MEMBERS OF THE PARLIAMENTS OF THIRD COUNTRIES	356.000:	323.022,37:	172.726,72:	150.295,65:	150.295,65:	0,00:	0:	32.977,63
	TOTAL ARTICLE 0370	7.104.400:	6.720.415,53:	5.625.453,17:	1.094.962,36:	1.094.962,36:	0,00:	0:	383.984,47
	TOTAL CHAPTER 037	7.104.400:	6.720.415,53:	5.625.453,17:	1.094.962,36:	1.094.962,36:	0,00:	0:	383.984,47
	TOTAL TITLE 03	7.104.400:	6.720.415,53:	5.625.453,17:	1.094.962,36:	1.094.962,36:	0,00:	0:	383.984,47

UTILISATION OF APPROPRIATIONS FOR THE YEAR 1981

CHAPTER ARTICLE ITEM	DESCRIPTION	ART 6 OF FIN REG: APPROPRIATION																			
		TOTAL APPRO- PRIATIONS	COMMITMENTS	PAYMENTS	AMOUNTS UNPAID	MATICALLY CARRIED FORWARD 1(C) AUTO- MATICALLY	AFTER 15 DEC: COMMITTED	UN-	10	11	12	13									
1-2-3	4																				
10...	OTHER EXPENDITURE																				
100...	PROVISIONAL APPROPRIATIONS	793.889	0,00	0,00	0,00	0,00	0,00	0,00	0,00	0,00	0,00	0,00	0,00	0,00	0,00	0,00	0,00	0,00	0,00	0,00	0,00
10000	PROVISIONAL APPROPRIATIONS	793.889	0,00	0,00	0,00	0,00	0,00	0,00	0,00	0,00	0,00	0,00	0,00	0,00	0,00	0,00	0,00	0,00	0,00	0,00	0,00
	TOTAL CHAPTER 100																				
101..	CONTINGENCY RESERVE																				
10100	CONTINGENCY RESERVE	1.400.000	0,00	0,00	0,00	0,00	0,00	0,00	0,00	0,00	0,00	0,00	0,00	0,00	0,00	0,00	0,00	0,00	0,00	0,00	0,00
	TOTAL CHAPTER 101																				
	TOTAL TITLE 10	2.193.889	0,00	0,00	0,00	0,00	0,00	0,00	0,00	0,00	0,00	0,00	0,00	0,00	0,00	0,00	0,00	0,00	0,00	0,00	0,00
	GRAND TOTAL	199.400.879	171.345.294	82.155.606	511.291.155	738.783	531.157	738.783	531.157	738.783	531.157	738.783	531.157	738.783	531.157	738.783	531.157	738.783	531.157	738.783	531.157

(IN ECU)

UTILISATION OF APPROPRIATIONS CARRIED FORWARD TO

1981

TABLE 4

CHAPTER ARTICLE ITEM	DESCRIPTION	APPROPRIATIONS: C.F. FROM THE YEAR	1981 PAYMENTS	UNUSED APPROPRIATIONS TO BE CANCELLED
1-2-3	4	5	6	7
01...	EXPENDITURE RELATING TO PERSONS WORKING WITH THE INSTITUTION	:	:	:
010..	MEMBERS OF THE INSTITUTION	:	:	:
01050	LANGUAGE COURSES FOR MEMBERS	34.300,00	20.498,98	13.801,02
	TOTAL CHAPTER 010	34.300,00	20.498,98	13.801,02
011..	STAFF	:	:	:
0117.	SUPPLEMENTARY SERVICES	:	:	:
01170	FREELANCE INTERPRETERS AND CONFERENCE TECHNICIANS	686.610,85	623.783,96	62.826,89
01172	OTHER SERVICES AND WORK SENT OUT FOR TRANSLATION AND TYPING	89.463,76	69.309,43	20.154,33
	TOTAL ARTICLE 0117	776.074,61	693.093,39	82.981,22
	TOTAL CHAPTER 011	776.074,61	693.093,39	82.981,22
012..	ALLOWANCES AND EXPENSES ON ENTERING AND LEAVING THE SERVICE AND ON TRANSFER	:	:	:
01200	MISCELLANEOUS EXPENDITURE ON STAFF RECRUITMENT	174.262,38	136.514,20	37.748,18
0122.	INSTALLATION, RESETTLEMENT AND TRANSFER ALLOWANCES	:	:	:
01221	STAFF	70.679,81	45.283,46	25.396,35
0123.	REMOVAL EXPENSES	:	:	:
01231	STAFF	27.008,99	20.626,58	6.382,41
0124.	TEMPORARY DAILY SUBSISTENCE ALLOWANCES	:	:	:
01241	STAFF	81.143,64	79.094,43	2.049,21
	TOTAL CHAPTER 012	353.094,82	281.518,67	71.576,15
013..	EXPENDITURE RELATING TO MISSIONS AND DUTY TRAVEL	:	:	:
0130.	MISSION EXPENSES, DUTY TRAVEL EXPENSES AND INCIDENTAL EXPENDITURE	:	:	:

(IN ECU)		UTILISATION OF APPROPRIATIONS CARRIED FORWARD TO		1981		TABLE 4
CHAPTER ARTICLE ITEM	DESCRIPTION	APPROPRIATIONS: C.F. FROM THE YEAR	80	PAYMENTS	UNUSED APPRO- PRIATIONS TO BE CANCELLED	
1-2-3	4	5		6		7
01301	STAFF	990.000,00		893.738,94		96.261,06
	TOTAL CHAPTER	990.000,00	013	893.738,94		96.261,06
014..	EXPENDITURE ON SOCIAL WELFARE					
01420	RESTAURANTS AND CANTEENS	78.970,28		70.250,90		8.719,38
01430	MEDICAL SERVICE	5.906,62		4.411,74		1.494,88
0149.	OTHER SOCIAL EXPENDITURE					
01490	OTHER EXPENDITURE	3.286,97		3.240,68		46,29
	TOTAL CHAPTER	88.163,87	014	77.903,32		10.260,55
015..	IN-SERVICE TRAINING AND FURTHER TRAINING FOR STAFF					
01510	LANGUAGE COURSES, RETRAINING, FURTHER TRAINING AND INFORMATION FOR STAFF	20.653,86		19.458,84		1.195,02
	TOTAL CHAPTER	20.653,86	015	19.458,84		1.195,02
	TOTAL TITLE	2.262.287,16	01	1.986.212,14		276.075,02

(IN ECU) UTILISATION OF APPROPRIATIONS CARRIED FORWARD TO 1981 TABLE 4

CHAPTER ARTICLE ITEM	D E S C R I P T I O N	APPROPRIATIONS: C.F. FROM THE YEAR	1981 PAYMENTS	UNUSED APPRO- PRIATIONS TO BE CANCELLED
1-2-3	4	5	6	7
02...	BUILDINGS, EQUIPMENT AND MISCELLANEOUS OPERATING EXPENDITURE	:	:	:
020..	IMMOVABLE PROPERTY INVESTMENTS, RENTAL OF BUILDINGS AND ASSOCIATED EXPENDITURE	:	:	:
0200.	RENT	:	:	:
02000	RENT	2.152.166,60	1.681.642,89	470.523,71
02010	INSURANCE	8.546,10	8.380,27	165,83
02020	WATER, GAS, ELECTRICITY AND HEATING	514.151,55	226.029,43	288.122,12
02030	CLEANING AND MAINTENANCE	914.650,97	428.814,08	485.836,89
02040	FITTING-OUT OF PREMISES	1.294.390,68	1.121.416,86	172.973,82
02050	SECURITY AND SURVEILLANCE OF BUILDINGS	190.032,33	131.783,39	58.248,94
02090	OTHER EXPENDITURE	376.712,01	263.744,50	112.967,51
	TOTAL CHAPTER 020	5.450.650,24	3.861.811,42	1.588.838,82
022..	MOVABLE PROPERTY AND ASSOCIATED EXPENDITURE	:	:	:
0220.	OFFICE MACHINES	:	:	:
02200	NEW PURCHASES	339.484,54	327.967,65	11.516,89
02201	REPLACEMENTS	24.517,98	23.091,29	1.426,69
02202	HIRE	2.434,70	201,02	2.233,68
02203	MAINTENANCE, USE AND REPAIR	40.120,97	24.646,15	15.474,82
	TOTAL ARTICLE 0220	406.558,19	375.906,11	30.652,08
0221.	FURNITURE	:	:	:
02210	NEW PURCHASES	1.016.099,89	932.614,38	83.485,51
02211	REPLACEMENTS	22.253,71	21.215,04	1.038,67
02213	MAINTENANCE, USE AND REPAIR	2.556,94	88,46	2.468,48
	TOTAL ARTICLE 0221	1.040.910,54	953.917,88	86.992,66

(IN ECU) UTILISATION OF APPROPRIATIONS CARRIED FORWARD TO 1981 TABLE 4

CHAPTER ARTICLE ITEM	D E S C R I P T I O N	APPROPRIATIONS: C.F. FROM THE YEAR	1981 PAYMENTS	UNUSED APPRO- PRIATIONS TO BE CANCELLED
1-2-3	4	5	6	7
0222.	TECHNICAL EQUIPMENT AND INSTALLATION	:	:	:
02220	NEW PURCHASES	1.780.580,23	1.674.543,74	106.036,49
02221	REPLACEMENTS	175.358,93	174.899,30	459,63
02222	HIRE	207.690,24	76.358,12	131.332,12
02223	MAINTENANCE, USE AND REPAIR	118.569,98	18.708,57	99.861,41
	TOTAL ARTICLE 0222	2.282.199,38	1.944.509,73	337.689,65
0223.	TRANSPORT EQUIPMENT	:	:	:
02230	NEW PURCHASES	54.090,32	44.834,15	9.256,17
02231	REPLACEMENTS	44.661,12	36.295,18	8.365,94
02232	HIRE	89.536,02	43.524,84	46.011,18
02233	MAINTENANCE, USE AND REPAIR	38.990,32	33.368,97	5.621,35
	TOTAL ARTICLE 0223	227.277,78	158.023,14	69.254,64
0224.	EQUIPMENT, OPERATING COSTS AND SERVICES RELATING IN DATA-PROCESSING	:	:	:
02240	NEW PURCHASES	30.567,80	29.819,16	748,64
02242	HIRE AND MAINTENANCE OF EQUIPMENT	24.267,14	20.427,83	3.839,31
02243	DEVELOPMENT AND MAINTENANCE OF APPLICATIONS	23.006,10	20.871,28	2.134,82
02244	INTERROGATION OF DATA BASES	4.607,80	4.315,67	292,13
	TOTAL ARTICLE 0224	82.448,84	75.433,94	7.014,90
0225.	DOCUMENTATION AND LIBRARY EXPENSES	:	:	:
02250	LIBRARY EXPENSES, PURCHASE OF BOOKS	19.684,31	19.658,21	26,10
02251	SPECIAL LIBRARY DOCUMENTATION AND REPRODUCTION EQUIPMENT	2.947,48	2.938,59	8,89
02252	SUBSCRIPTIONS TO NEWSPAPERS, PERIODICALS	10.490,21	4.397,16	6.093,05
02253	SUBSCRIPTIONS TO NEWS AGENCIES	29.188,58	8.152,83	21.035,75

(IN ECU)		UTILISATION OF APPROPRIATIONS CARRIED FORWARD TO		1981		TABLE 4	
CHAPTER ARTICLE ITEM	D E S C R I P T I O N	APPROPRIATIONS C.F. FROM THE YEAR	80	PAYMENTS	UNUSED APPROPRIATIONS TO BE CANCELLED		
1-2-3	4	5		6		7	
02254	BINDING AND UPKEEP OF LIBRARY BOOKS	4.025,29		3.978,44		46,85	
	TOTAL ARTICLE 0225	66.335,87		39.125,23		27.210,64	
	TOTAL CHAPTER 022	4.105.730,60		3.546.916,03		558.814,57	
023..	CURRENT OPERATING EXPENDITURE						
02300	STATIONERY AND OFFICE SUPPLIES	306.010,70		272.140,96		33.869,74	
0231.	POSTAL CHARGES AND TELECOMMUNICATIONS						
02310	POSTAGE ON CORRESPONDANCE AND DELIVERY CHARGES	192.211,14		120.642,27		71.568,87	
02311	TELEPHONE, TELEGRAPH, TELEX, TELEVISION	363.731,32		290.724,48		73.006,84	
	TOTAL ARTICLE 0231	555.962,46		411.366,75		144.595,71	
0232.	FINANCIAL CHARGES						
02320	BANK CHARGES	300,00		300,00		0,00	
02340	LEGAL EXPENSES	8.619,20		1.769,17		6.850,03	
02340	DAMAGES	106,68		105,60		1,08	
0245.	OTHER OPERATING EXPENDITURE						
02450	MISCELLANEOUS INSURANCE	2.391,75		436,87		1.954,88	
02451	UNIFORMS AND WORKING CLOTHES	16.359,95		14.981,64		1.378,31	
02452	MISCELLANEOUS EXPENDITURE ON INTERNAL MEETINGS	19.705,68		18.385,43		1.320,25	
02453	DEPARTMENTAL REMOVALS	48.644,79		21.932,66		26.712,13	
02354	PETTY EXPENSES	19.231,23		14.214,34		5.016,89	
	TOTAL ARTICLE 0235	106.333,40		69.950,94		36.382,46	
	TOTAL CHAPTER 023	977.332,44		755.633,42		221.699,02	

(IN ECU)		UTILISATION OF APPROPRIATIONS CARRIED FORWARD TO		1981	TABLE 4
CHAPTER ARTICLE ITEM	D E S C R I P T I O N	APPROPRIATIONS C.F. FROM THE YEAR	1980	PAYMENTS	UNUSED APPRO- PRIATIONS TO BE CANCELLED
1-2-3	4	5		6	7
024..	ENTERTAINMENT AND REPRESENTATION EXPENSES				
0240.	ENTERTAINMENT AND REPRESENTATION EXPENSES				
02400	MEMBERS OF THE INSTITUTION	83.541,30		59.403,93	24.137,37
02401	STAFF	10.000,00		1.578,76	8.421,24
	TOTAL ARTICLE 0240	93.541,30		60.982,69	32.558,61
	TOTAL CHAPTER 024	93.541,30		60.982,69	32.558,61
025..	EXPENDITURE FOR FORMAL AND OTHER MEETINGS				
02550	MISCELLANEOUS EXPENDITURE ON ORGANIZATION OF AND PARTICIPATION IN CONFERENCES AND CON- GRESSES AND IN MEETINGS ORGANIZED OUTSIDE THE PLACES OF WORK OF THE INSTITUTION	104.400,63		98.644,96	5.755,67
	TOTAL CHAPTER 025	104.400,63		98.644,96	5.755,67
026..	EXPENDITURE ON STUDIES, SURVEYS AND CONSULTATIONS				
02600	LIMITED CONSULTATIONS, STUDIES AND SURVEYS	1.603,96		1.238,42	365,54
	TOTAL CHAPTER 026	1.603,96		1.238,42	365,54
027..	EXPENDITURE ON PUBLISHING AND INFORMATION				
02700	OFFICIAL JOURNAL	224.650,85		224.650,85	0,00
0271.	PUBLICATIONS				
02710	PUBLICATIONS OF A GENERAL NATURE	904.847,69		828.961,27	75.886,42
02719	EXPENDITURE ON PUBLICITY FOR AND PROMOTION OF PUBLICATIONS	59.797,73		59.429,16	368,57
	TOTAL ARTICLE 0271	964.645,42		888.390,43	76.254,99
0272.	EXPENDITURE ON THE DISSEMINATION OF INFORMATION AND PARTICIPATION IN PUBLIC EVENTS				
02720	EXPENDITURE ON INFORMATION AND PARTICIPATION IN PUBLIC EVENTS	370.771,05		322.255,19	48.515,86
	TOTAL CHAPTER 027	1.560.067,32		1.435.296,47	124.770,85

(IN ECU)		UTILISATION OF APPROPRIATIONS CARRIED FORWARD TO		1981	TABLE 4
CHAPTER ARTICLE ITEM	D E S C R I P T I O N	APPROPRIATIONS C.F. FROM THE YEAR	THE 80	PAYMENTS	UNUSED APPRO- PRIATIONS TO BE CANCELLED
1-2-3	4	5		6	7
029..	SUBSIDIES AND FINANCIAL CONTRIBUTIONS				
0294.	STUDY GRANTS				
02940	RESEARCH AND STUDY GRANTS	14.313,22		10.475,52	3.837,70
02941	GRANTS FOR THE FURTHER TRAINING OF CONFERENCE INTERPRETERS	15.663,94		15.556,50	107,44
02942	OTHER GRANTS	72.446,44		25.847,32	46.599,12
	TOTAL ARTICLE 0294	102.423,60		51.879,34	50.544,26
0299.	OTHER SUBSIDIES				
02990	SUBSIDIES AND FINANCIAL CONTRIBUTIONS TOWARDS THE COST OF GROUP VISITS	270.464,39		91.001,97	179.462,42
02991	SUBSIDIES TOWARDS THE COST OF VISITS BY HIGH-RANKING PERSONS FROM THE MEMBER STATES	372.033,39		72.803,22	299.230,17
	TOTAL ARTICLE 0299	642.497,78		163.805,19	478.692,59
	TOTAL CHAPTER 029	744.921,38		215.684,53	529.236,85
	TOTAL TITLE 02	13.038.247,87		9.976.207,94	3.062.039,93

(IN ECU)		UTILISATION OF APPROPRIATIONS CARRIED FORWARD TO		1981		TABLE 4	
CHAPTER ARTICLE ITEM	DESCRIPTION	APPROPRIATIONS C.F. FROM THE YEAR	THE 80	PAYMENTS	UNUSED APPRO- PRIATIONS TO BE CANCELLED		
1-2-3	4	5		6		7	
03...	EXPENDITURE RESULTING FROM SPECIAL FUNCTIONS CARRIED OUT BY THE INSTITUTION						
037..	EXPENDITURE RELATING TO CERTAIN INSTITUTIONS AND BODIES						
0370.	SPECIAL EXPENDITURE OF THE EUROPEAN PARLIAMENT						
03700	EXPENDITURE ON INTER-PARLIAMENTARY INSTITUTIONS STIPULATED IN THE ACP-EEC CONVENTION OF LOME	226.387,69		197.685,72		28.701,97	
03701	EXPENDITURE ON THE JOINT PARLIAMENTARY COMMITTEE PROVIDED FOR WITHIN THE FRAMEWORK OF THE ASSOCIATION WITH GREECE	58.480,31		54.752,68		3.727,63	
03702	EXPENDITURE ON THE JOINT PARLIAMENTARY COMMITTEE PROVIDED FOR WITHIN THE FRAMEWORK OF THE ASSOCIATION WITH TURKEY	16.295,95		0,00		16.295,95	
03705	CONTRIBUTION TO SECRETARIAL EXPENSES OF THE POLITICAL GROUPS OF THE EUROPEAN PARLIAMENT	187.478,85		185.290,63		2.188,22	
	TOTAL ARTICLE 0370	488.642,80		437.729,03		50.913,77	
	TOTAL CHAPTER 037	488.642,80		437.729,03		50.913,77	
	TOTAL TITRE 03	488.642,80		437.729,03		50.913,77	
	GRAND TOTAL	15.789.177,83		12.400.149,11		3.389.028,72	

EUROPEAN PARLIAMENT

FINANCIAL STATEMENT AS AT 31 DECEMBER 1981

ECU

		ASSETS	LIABILITIES
I. FIXED ASSETS			
(a) Furniture & Equipment	4,297,927.95		
(b) Other fixed assets	26,642.57	4,324,570.52	
II. CONVERTIBLE ASSETS			
(a) Institutions	449,152.32		
(b) Political groups and - delegations	96,148.49		
(c) Other bodies	53,932.47		
(d) Staff debtors	52,462.60		
(e) Outside debtors	44,497.98		
(f) Advances to be regularized	492,759.53		
(g) Expenditure to be charged	2,000,659.97	3,189,613.36	
III. CASH ACCOUNTS			
(a) Bank accounts	21,097,799.41		
(b) Advance funds	5,002,526.60		
(c) Cash	188,093.61	26,288,419.62	
IV. CAPITAL RESOURCES			
(a) Own capital			4,297,927.95
(b) Surplus from financial year			
- balance at 1.1.81	35,183,145.22		
- financial contri- butions paid in 1981	145,632,599.39		
- own revenue	15,354,217.24		
	196,169,961.85		
- to be deducted: payments made in 1981	168,006,660.40		28,163,301.45
(c) Sundry creditors			189,665.33
(d) Reutilization			400,198.08
(e) Sums payable at 31.12.81 and paid before 15.1.82			751,510.69
		33,802,603.50	33,802,603.50

