



# RAPID REPORTS

## Agriculture, forestry and fisheries

1991 □ 13

ISSN 1017-5776

**TRENDS IN THE EC AGRICULTURAL PRICE INDICES  
(OUTPUT AND INPUT)  
IN THE SECOND QUARTER OF 1991**

**Producer prices of agricultural products (output)**

*Lower in real terms  
(Nominal change: +1.5%, real: -4.2%)*

The average monthly index of producer prices of **agricultural products** (including fruit and vegetables) for the Community as a whole (EUR 11) was 1.5% higher in nominal terms in the second quarter of 1991 relative to the corresponding quarter of the previous year (cf. Table 1). In real terms, prices were lower than in the same quarter of the previous year for the sixth consecutive quarter, this time by 4.2%.

As in the first quarter of 1991, real producer prices for **crop products** were on average almost the same (+0.4%) as in the corresponding quarter of 1990. However, there was significant movement in the real prices of individual crop products, in most cases continuing the trends observed in the previous quarter. An exception to past trends occurred for cereals and rice, whose real prices were 4.7% higher than a year earlier, due to increases of 16.6% for maize, 6.1% for soft wheat and 2.5% for feed barley, and despite lower real prices for durum wheat (7.8%), rice (-6.2%) and malting barley (-3.9%). In addition, real prices for flowers and fresh vegetables, which had been well above levels twelve months earlier for several quarters running, showed little difference from the corresponding 1990 levels by the second quarter of this year. Nevertheless, there were strong regional divergences in the movements of real fresh vegetable prices, which were significantly lower in Italy (-11.2%) and Spain (-15.3%), but well up on the second quarter of 1990 in Germany (+17.4%), France (+23.0%), the Netherlands (+24.3%) and Ireland (+21.3%). Real prices for olives and olive oil were much higher (+20.0%) than in the same quarter of the previous year for the second consecutive quarter (an increase not shared by Spanish producers), and fruit prices were also higher (+8.9%). Real prices for wine were lower than a year earlier for the third consecutive quarter, although here

Manuscript completed on = 11.10.91

For further information please contact: BURREL  
Eurostat, L-2920 Luxembourg, tel. 4301-1537 Fax: 4301 3370

Price (excl. VAT) in Luxembourg: Subscription ECU 160

Catalogue number: CA-NN-91-013-EN-C

too there were divergences between Member States, with falls in Spain (-23.7%), Italy (-10.2%) and France (-7.7%) but higher real prices in Germany (+8.4%) and Greece (+12.0%). Real prices again failed to reach the level of the same quarter in the previous year for root crops (-5.7%) and seeds (-5.3%). In summary, unusually buoyant end-of-season prices for cereals helped to offset weaker prices for some other crop products, giving an overall result of no significant change in real terms.

For the fourth consecutive quarter, real producer prices in the animal sector were lower than in the corresponding quarter of the previous year in all Member States and, at Community level, for all categories of product, with an average fall of 8.5% recorded for the Community as a whole (EUR 11). Real cattle prices were more than 10% lower compared with the second quarter of 1990 everywhere except Spain (-5.2%), the United Kingdom (-5.4%) and Greece (-9.6%). The largest falls were in Germany (-15.4%), the Netherlands (-15.3%), Luxembourg (-15.6%) and Denmark (-14.4%). Real pig prices were lower throughout the Community, and more than 10% below their level twelve months earlier except in Italy, Ireland, Greece and Spain. Large falls in sheep prices were recorded in the United Kingdom (-17.4%), Spain (-13.1%), Belgium (-24.9%) Denmark (-19.0%) and Italy (-12.7%) but real sheep prices were up by 26.3% in the Netherlands, 5.4% in Greece and 4.2% in France. Real milk prices were more than 5% lower than in the same quarter of 1990 in all Member States except the Netherlands (-0.6%), with large falls in Luxembourg (-12.2%) and Greece (-12.7%). Real prices for poultry and eggs continued their downward trends everywhere.

At Member State level for EUR 11 (cf. Table 2) the changes in nominal producer price indices for agricultural products as a whole range from -9.9% (L) to +22.5% (GR). In deflated form the range is between -12.6% (L) and +2.7% (GR).

#### **Purchase prices of goods and services for current consumption (Input I)**

*Increase in nominal terms (+3.0%)  
Continuing decline in real terms (-2.6%)*

In the second quarter of 1991 the purchase prices of goods and services for current consumption in agriculture in the Community as a whole (EUR 11) were 3.0% higher in nominal terms than in the second quarter of 1990, whereas in real terms they were down by 2.6% (cf. Table 3). Real prices for animal feedingstuffs (-5.5%) continued to be the main cause of this decline, with the largest fall in Denmark (-10.5%). Real prices of animals for rearing, which account for a very small proportion of the Input I index, continued to fall. Real fertilizer prices were slightly lower compared with the second quarter of 1990, whereas prices of plant protection products were a little higher in real terms. The Community average for real energy prices paid by farmers was higher than in the second quarter of 1990 by 3.5%.

Comparison of the nominal price changes relative to the second quarter of 1990 for inputs between Member States (cf. Table 4) reveals a range from -1.3% (B) to +27.3% (GR). The changes in real input prices range from -4.5% (I) to +6.7% (GR).

#### **Purchase prices of goods and services contributing to agricultural investment (Input II)**

*Again slightly lower in real terms*

In the second quarter of 1991, the purchase prices of goods and services contributing to agricultural investment in the Community as a whole (EUR 11) were higher in nominal terms by 4.8% than in the second quarter of 1990. Real prices for this category continued to be slightly down on the previous year (-0.9%). There are considerable differences between individual Member States in deflated purchase prices relative to levels twelve months earlier, ranging from -4.0% (E) to +2.4% (NL).

## Comparison of trends in real output and input (I) prices

*Producer price decreases accompanied by input price falls  
in most Member States  
Negative net price effect (-3.0%)  
for Community agriculture as a whole*

In the second quarter of 1991 in the Community as a whole (EUR 11) the deflated output price index fell by 4.2% whilst the deflated input price index fell by 2.6%. Interpretation of these trends should take into account the fact that purchases of goods and services for current consumption in agriculture account for only a part of the value of output (for EUR 11, about 45% in value terms of the total sales of agricultural products, calculated according to the national farm concept). This means that when a decrease in real producer prices is accompanied by a fall in real input prices (as occurred in all Member States except Greece in the second quarter of 1991) the change in value added due to the output price decrease is partly (for NL, completely) offset by the decrease in real prices of intermediate consumption. In the case of Greece, increased input prices partly cancel out the effect of higher output prices. Column 5 of the following table shows the change in value added for each Member State due to price changes alone, expressed as a percentage of total output. The Member States are arranged in order of increasing size of this effect. Greece has the largest figure for this net effect. All Member States except Greece and the Netherlands show a negative net price effect, with Luxembourg having the strongest negative effect (-12.5%) for the second quarter running. For the Community as a whole (EUR 11) the net price effect was -3.0%.

Country	Rates of change of real output prices (%)	Rates of change of real input I prices (%)	Input I as a share of output in 1985	Corrected rates of change of real input I prices (%) (2 x 3)	Net price effect (1 - 4)
	1	2	3	4	5
L	- 12,6	- 0,3	0,397	- 0,1	- 12,5
E	- 10,9	- 3,0	0,447	- 1,3	- 9,6
IRL	- 8,0	- 2,6	0,480	- 1,2	- 6,8
D	- 6,6	- 2,0	0,644	- 1,3	- 5,3
DK	- 6,8	- 3,7	0,519	- 1,9	- 4,9
UK	- 6,4	- 2,8	0,567	- 1,6	- 4,8
B	- 7,1	- 4,4	0,568	- 2,5	- 4,6
F	- 3,1	- 1,9	0,437	- 0,8	- 2,3
I	- 3,5	- 4,5	0,310	- 1,4	- 2,1
NL	- 1,4	- 4,1	0,530	- 2,2	+ 0,8
GR	+ 2,7	+ 6,7	0,264	+ 1,8	+ 0,9
EUR 11	- 4,2	- 2,6	0,454	- 1,2	- 3,0

### Technical note

The EC agricultural price indices (output and input) are available in Eurostat's CRONOS data bank ("PRAG" domain) in both nominal and deflated form. By using deflated indices it is possible to eliminate the distortions in the nominal indices caused by different inflation rates in the Member States. The nominal agricultural price indices are deflated by means of the consumer price index. The terms "deflated" and "real" are used synonymously.

Spain has now been included in the EC agricultural price index system. No monthly agricultural price indices are yet available for Portugal.

Table 1 : EC Index of producer prices of agricultural products :  
Rates of change of the price indices for EUR 11 (in %) (1)  
Tableau 1 : Indice CE des prix à la production des produits agricoles :  
Taux de variation des indices des prix pour EUR 11 (en %) (1)

	04/90-06/90 04/89-06/89	07/90-09/90 07/89-09/89	10/90-12/90 10/89-12/89	01/91-03/91 01/90-03/90	04/91-06/91 04/90-06/90
<b>NOMINAL INDICES / INDICES NOMINAUX</b>					
<b>TOTAL</b>	3.4	-0.1	-1.6	1.5	1.5
<b>CROP PRODUCTS / PRODUITS VEGETAUX</b>	8.4	7.9	6.8	8.4	6.4
Cereals and rice / Céréales et riz	-2.7	0.1	1.9	5.5	10.2
Root crops / Plantes sarclées	13.1	-4.9	-3.3	2.2	0.3
Fruit / Fruits	18.4	20.9	14.8	16.2	11.4
Fresh vegetables / Légumes frais	11.8	16.8	16.5	14.8	5.7
Wine must and wine / Moût et vin	16.8	12.7	3.3	-3.6	-4.2
Olives and olive oil / Olives & huile d'olive	12.9	12.4	18.7	32.9	34.8
Seeds / Semences	4.6	7.1	-1.7	0.6	-0.1
Flowers etc. / Fleurs etc.	4.9	2.1	10.7	16.1	5.6
Other crop products / Autres produits végétaux	-0.8	-2.7	-1.9	-0.8	-0.6
<b>ANIMALS &amp; ANIMAL PRODUCTS / ANIMAUX &amp; PRODUITS ANIMAUX</b>	-1.2	-6.9	-9.0	-5.0	-3.4
Animals / Animaux	-0.9	-8.7	-12.0	-6.8	-4.5
Calves / Veaux	-10.4	-10.0	-6.5	-8.2	-5.2
Cattle excluding calves / Bovins sans veaux	-6.9	-9.7	-12.0	-10.0	-7.0
Pigs / Porcs	10.2	-11.5	-19.3	-4.8	-5.2
Sheep and lambs / Moutons et agneaux	-7.6	-3.6	-11.4	-14.9	-0.3
Poultry / Volailles	-1.0	-2.6	-1.4	-0.1	-0.5
Other animals / Autres animaux	3.3	1.2	0.9	2.6	5.6
Milk / Lait	-2.4	-4.1	-4.7	-3.1	-2.0
Eggs / Oeufs	4.7	-3.9	-2.8	3.0	0.5
Other animal products / Autres produits animaux	-2.0	-7.4	-12.0	-14.6	-13.6
<b>DEFLATED INDICES / INDICES DEFLATES</b>					
<b>TOTAL</b>	-3.3	-7.3	-8.4	-4.9	-4.2
<b>CROP PRODUCTS / PRODUITS VEGETAUX</b>	0.1	-1.1	-1.1	0.7	0.4
Cereals and rice / Céréales et riz	-8.7	-6.2	-4.5	-0.5	4.7
Root crops / Plantes sarclées	6.9	-11.8	-10.5	-5.4	-5.7
Fruit / Fruits	2.3	5.5	6.1	7.5	8.9
Fresh vegetables / Légumes frais	1.6	6.3	7.1	6.6	0.3
Wine must and wine / Moût et vin	11.2	6.9	-2.2	-8.8	-9.4
Olives and olive oil / Olives & huile d'olive	0.7	-0.2	4.6	18.6	20.0
Seeds / Semences	-0.4	1.3	-7.2	-4.7	-5.3
Flowers etc. / Fleurs etc.	-0.1	-2.4	4.9	9.1	0.4
Other crop products / Autres produits végétaux	-7.7	-11.7	-12.3	-11.1	-10.3
<b>ANIMALS &amp; ANIMAL PRODUCTS / ANIMAUX &amp; PRODUITS ANIMAUX</b>	-6.3	-12.3	-14.4	-10.0	-8.5
Animals / Animaux	-6.0	-13.9	-17.3	-11.7	-9.7
Calves / Veaux	-15.5	-15.7	-12.5	-13.6	-10.4
Cattle excluding calves / Bovins sans veaux	-11.1	-14.1	-16.6	-14.4	-11.3
Pigs / Porcs	5.4	-15.8	-23.5	-9.0	-9.9
Sheep and lambs / Moutons et agneaux	-15.8	-12.1	-19.2	-21.9	-8.5
Poultry / Volailles	-7.1	-9.0	-8.0	-6.2	-6.3
Other animals / Autres animaux	-4.8	-6.7	-6.7	-4.9	-3.1
Milk / Lait	-7.6	-9.7	-10.2	-7.9	-6.5
Eggs / Oeufs	-1.3	-10.4	-9.3	-3.7	-6.0
Other animal products / Autres produits animaux	-11.2	-17.0	-21.1	-21.5	-19.1

(1) On the base / sur la base 1985 = 100

**Table 2**

**EC Index of producer prices of agricultural products : Rates of change of the price indices by Member States (in %) (1)**

**Indice CE des prix à la production des produits agricoles : Taux de variation des indices des prix par Etat membre (en %) (1)**

			B	DK	D(2)	GR	E	F	IRL	I	L	NL	UK	EUR11(3)
Total	Nominal indices / Indices nominaux	a)	-8.4	-8.2	-8.8	21.1	-1.4	-0.3	-14.5	4.5	-4.1	-6.8	-3.3	-0.1
		b)	-7.7	-12.5	-9.7	19.6	-1.4	-2.9	-13.3	2.8	-6.5	-8.9	-6.4	-1.6
		c)	-2.5	-7.9	-2.7	22.4	-4.9	-0.3	-9.2	8.1	-8.6	-2.6	-2.8	1.5
		d)	-4.1	-4.3	-3.7	22.5	-5.5	0.1	-5.2	2.9	-9.9	2.0	-0.8	1.5
	Deflated indices / Indices déflatés	a)	-11.4	-10.6	-11.2	-0.5	-7.3	-3.6	-16.8	-1.9	-7.1	-9.1	-12.4	-7.3
		b)	-11.2	-14.4	-12.3	-2.5	-7.6	-6.3	-15.6	-3.7	-10.3	-11.4	-14.9	-8.4
		c)	-6.0	-10.2	-5.3	1.1	-10.5	-3.6	-11.4	1.5	-11.5	-5.7	-10.6	-4.9
		d)	-7.1	-6.8	-6.6	2.7	-10.9	-3.1	-8.0	-3.5	-12.6	-1.4	-6.4	-4.2
Crop products Produits végétaux	Nominal indices / Indices nominaux	a)	1.2	-5.2	-2.4	23.7	5.9	5.4	-15.8	10.2	-5.8	6.7	0.4	7.9
		b)	2.7	-6.8	-0.4	22.7	7.2	2.4	-8.2	8.7	-2.8	-0.8	-1.0	6.8
		c)	5.2	-5.3	6.1	28.7	-3.5	5.1	-2.4	16.1	-2.8	0.2	2.0	8.4
		d)	3.0	0.5	4.7	26.3	-7.7	5.2	4.2	5.7	-2.8	9.1	6.4	6.4
	Deflated indices / Indices déflatés	a)	-2.1	-7.6	-5.0	1.6	-0.5	1.9	-18.1	3.5	-8.7	4.0	-9.1	-1.1
		b)	-1.2	-8.8	-3.3	-0.1	0.5	-1.1	-10.6	1.8	-6.8	-3.6	-9.9	-1.1
		c)	1.4	-7.6	3.3	6.3	-9.1	1.6	-4.7	9.1	-5.9	-3.0	-6.2	0.7
		d)	-0.3	-2.1	1.6	5.9	-13.0	1.9	1.2	-0.9	-5.8	5.5	0.3	0.4
Animal products Produits animaux	Nominal indices Indices nominaux	a)	-12.5	-9.5	-11.1	15.0	-10.3	-5.6	-14.4	-3.4	-3.8	-12.6	-5.2	-6.9
		b)	-12.7	-14.9	-13.0	12.8	-11.7	-8.1	-13.9	-5.3	-7.0	-13.3	-9.4	-9.0
		c)	-6.5	-9.1	-6.2	7.5	-7.0	-5.9	-10.1	-2.9	-9.4	-4.3	-5.7	-5.0
		d)	-8.0	-6.5	-7.1	13.6	-2.1	-5.6	-6.4	-1.3	-10.9	-2.1	-5.4	-3.4
	Deflated indices / Indices déflatés	a)	-15.3	-11.7	-13.5	-5.5	-15.6	-8.7	-16.7	-9.4	-6.8	-14.7	-14.2	-12.3
		b)	-16.0	-16.8	-15.5	-8.0	-17.3	-11.3	-16.2	-11.3	-10.8	-15.7	-17.6	-14.4
		c)	-9.9	-11.4	-8.6	-11.2	-12.4	-9.0	-12.3	-8.8	-12.3	-7.4	-13.3	-10.0
		d)	-10.9	-8.9	-9.8	-4.9	-7.7	-8.5	-9.2	-7.4	-13.6	-5.3	-10.8	-8.5

(1) On the base / sur la base 1985 = 100

a =  $\frac{07/90-09/90}{07/89-09/89}$

b =  $\frac{10/90-12/90}{10/89-12/89}$

c =  $\frac{01/91-03/91}{01/90-03/90}$

d =  $\frac{04/91-06/91}{04/90-06/90}$

(2) Data for the Federal Republic of Germany in its boundaries prior to 3 October 1990, including West Berlin /Données pour la République Fédérale d'Allemagne, dans sa situation territoriale avant le 3 octobre 1990, Berlin Ouest inclus.

(3) EUR 10 + Spain / Espagne

**Table 3 : EC Indice of purchase prices of means of agricultural production :  
Rates of change of the price indices for EUR 11 (in %) (1)**  
**Tableau 3 : Indice CE des prix d'achat des moyens de production agricole :  
Taux de variation des indices des prix pour EUR 11 (en %) (1)**

	04/90-06/90 04/89-06/89	07/90-09/90 07/89-09/89	10/90-12/90 10/89-12/89	01/91-03/91 01/90-03/90	04/91-06/91 04/90-06/90
<b>NOMINAL INDICES / INDICES NOMINAUX</b>					
<b>01 GOODS &amp; SERV.CURRENTLY CONS.IN AGRICULT. BIENS &amp; SERV.DE CONS.COURANTE DE L'AGRI.</b>	0.2	0.5	1.7	2.2	3.0
1. Seeds / Semences	4.6	4.9	2.6	2.4	2.0
2. Animals for rearing / Animaux d'élevage	-1.8	-13.0	-13.0	-9.0	-5.8
3. Energy / Energie	5.9	16.4	23.6	16.3	11.2
4. Fertilizers / Engrais	-0.6	0.6	3.2	5.1	4.1
5. Plant protection products / Produits de protection des cultures	4.8	5.0	5.4	6.2	5.8
6. Animal feedingstuffs / Aliments des animaux	-3.8	-4.6	-4.5	-2.7	0.2
7. Small tools / Petit outillage	3.9	4.0	5.6	6.2	6.4
8. Maintenance and repair of plant / Entretien et réparation du matériel	5.5	5.7	6.1	5.9	5.8
9. Maintenance and repair of buildings / Entretien & réparation des bâtiments d'exploitation	7.0	6.9	7.0	7.0	6.3
10. Veterinary services / Services vétérinaires	4.0	3.8	3.9	4.4	3.7
11. General expenses / Frais généraux	3.5	3.4	3.4	3.4	3.7
<b>02 GOODS &amp; SERV.CONTR.TO AGRICULT.INVESTM/ BIENS &amp; SERV.CONC.AUX INVEST.DE L'AGRIC.</b>	5.9	6.1	6.1	5.4	4.8
12. Machinery / Machines	4.5	4.5	4.5	4.1	3.6
13. Buildings / Ouvrages	8.3	9.0	9.0	7.7	7.1
<b>DEFLATED INDICES / INDICES DEFLATES</b>					
<b>01 GOODS &amp; SERV.CURRENTLY CONS.IN AGRICULT. BIENS &amp; SERV.DE CONS.COURANTE DE L'AGRI.</b>	-5.1	-5.4	-4.6	-3.8	-2.6
1. Seeds / Semences	-0.5	-0.6	-3.2	-3.2	-3.4
2. Animals for rearing / Animaux d'élevage	-5.8	-17.9	-18.6	-13.9	-10.5
3. Energy / Energie	-0.5	8.2	14.3	7.7	3.5
4. Fertilizers / Engrais	-5.3	-5.1	-3.0	-0.5	-1.0
5. Plant protection products / Produits de protection des cultures	-0.2	-0.3	-0.1	0.9	0.9
6. Animal feedingstuffs / Aliments des animaux	-9.2	-10.5	-10.6	-8.8	-5.5
7. Small tools / Petit outillage	-1.9	-2.2	-0.9	0.1	0.8
8. Maintenance and repair of plant / Entretien et réparation du matériel	-0.1	-0.2	0.1	0.2	0.6
9. Maintenance and repair of buildings / Entretien & réparation des bâtiments d'exploitation	0.9	0.5	0.4	0.9	1.0
10. Veterinary services / Services vétérinaires	-0.8	-1.3	-1.3	-0.4	-0.8
11. General expenses / Frais généraux	-1.5	-1.9	-2.0	-1.6	-0.9
<b>02 GOODS &amp; SERV.CONTR.TO AGRICULT.INVESTM/ BIENS &amp; SERV.CONC.AUX INVEST.DE L'AGRIC.</b>	0.1	-0.2	-0.4	-0.6	-0.9
12. Machinery / Machines	-0.6	-1.0	-1.1	-1.1	-1.6
13. Buildings / Ouvrages	1.3	1.4	1.1	0.5	0.2

(1) On the base / sur la base 1985 = 100

Table 4

EC Indices of purchase prices of the means of agricultural production : Rates of change of the price indices by Member State (in %) <sup>(1)</sup>Indice CE des prix d'achat des moyens de production agricole : Taux de variation des indices des prix par Etat membre (en %) <sup>(1)</sup>

			B	DK	D <sup>(2)</sup>	GR	E	F	IRL	I	L	NL	UK	EUR11
Goods and services currently consumed in agriculture	Nominal indices / Indices nominaux	a)	-5.3	-2.5	-3.6	24.2	0.2	-1.1	-0.9	1.2	0.3	-4.9	3.7	0.5
		b)	-4.1	-2.2	-2.2	30.3	1.1	0.2	-0.5	1.7	0.8	-4.4	3.9	1.7
		c)	-3.0	-2.5	-0.3	32.2	1.8	0.9	-0.6	0.6	3.2	-3.6	3.1	2.2
		d)	-1.3	-1.1	1.1	27.3	2.9	1.2	0.3	1.9	2.9	-0.8	3.1	3.0
Biens et services de consommation courante de l'agriculture	Deflated indices / Indices déflatés	a)	-8.3	-5.0	-6.2	2.0	-5.8	-4.4	-3.6	-5.1	-2.8	-7.2	-6.1	-5.4
		b)	-7.7	-4.4	-5.1	6.2	-5.3	-3.3	-3.1	-4.7	-3.3	-7.1	-5.6	-4.6
		c)	-6.5	-4.8	-2.9	9.3	-4.2	-2.4	-3.0	-5.5	-0.1	-6.7	-5.2	-3.8
		d)	-4.4	-3.7	-2.0	6.7	-3.0	-1.9	-2.6	-4.5	-0.3	-4.1	-2.8	-2.6
of which : animal feedingstuffs	Nominal indices / Indices nominaux	a)	-10.0	-10.6	-10.6	17.5	-2.0	-8.3	-3.2	-3.1	-2.6	-12.8	0.7	-4.6
		b)	-9.1	-11.5	-10.2	19.3	-2.3	-7.9	-5.0	-2.1	-3.6	-12.3	-1.8	-4.5
		c)	-6.6	-11.0	-7.9	28.2	-1.7	-6.6	-5.5	-0.7	-2.4	-8.9	-1.8	-2.7
		d)	-2.9	-8.1	-3.2	27.1	0.1	-3.4	-4.0	1.8	-2.8	-3.5	1.0	0.2
dont : aliments pour animaux	Deflated indices / Indices déflatés	a)	-12.9	-12.8	-13.0	-3.5	-7.9	-11.3	-5.8	-9.0	-5.7	-14.9	-8.8	-10.5
		b)	-12.5	-13.4	-12.8	-2.8	-8.4	-11.1	-7.5	-8.3	-7.5	-14.8	-10.7	-10.6
		c)	-9.9	-13.2	-10.3	5.9	-7.5	-9.7	-7.8	-6.7	-5.5	-11.8	-9.6	-8.8
		d)	-5.9	-10.5	-6.1	6.5	-5.7	-6.4	-6.8	-4.6	-5.8	-6.6	-4.8	-5.5
Goods and services contributing to agricultural investment	Nominal indices Indices nominaux	a)	2.9	6.0	4.1	15.5	5.6	3.5	3.2	6.9	8.7	5.0	5.1	6.1
		b)	4.3	4.6	4.3	16.7	4.4	4.0	3.1	7.0	9.4	5.0	4.8	6.1
		c)	2.4	3.6	4.4	15.3	2.5	3.8	2.8	5.5	3.2	5.9	6.0	5.4
		d)	1.5	2.9	4.6	15.8	1.8	3.7	2.3	3.9	2.5	5.9	5.8	4.8
Biens et services concourant aux investissements de l'agriculture	Deflated indices / Indices déflatés	a)	-0.4	3.3	1.3	-5.1	-0.7	0.1	0.4	0.4	5.3	2.4	-4.9	-0.2
		b)	0.3	2.3	1.3	-4.8	-2.2	0.4	0.4	0.2	5.0	2.1	-4.7	-0.4
		c)	-1.3	1.0	1.7	-4.7	-3.5	0.4	0.3	-0.9	-0.1	2.5	-2.5	-0.6
		d)	-1.7	0.2	1.5	-3.0	-4.0	0.4	-0.7	-2.6	-0.6	2.4	-0.2	-0.9

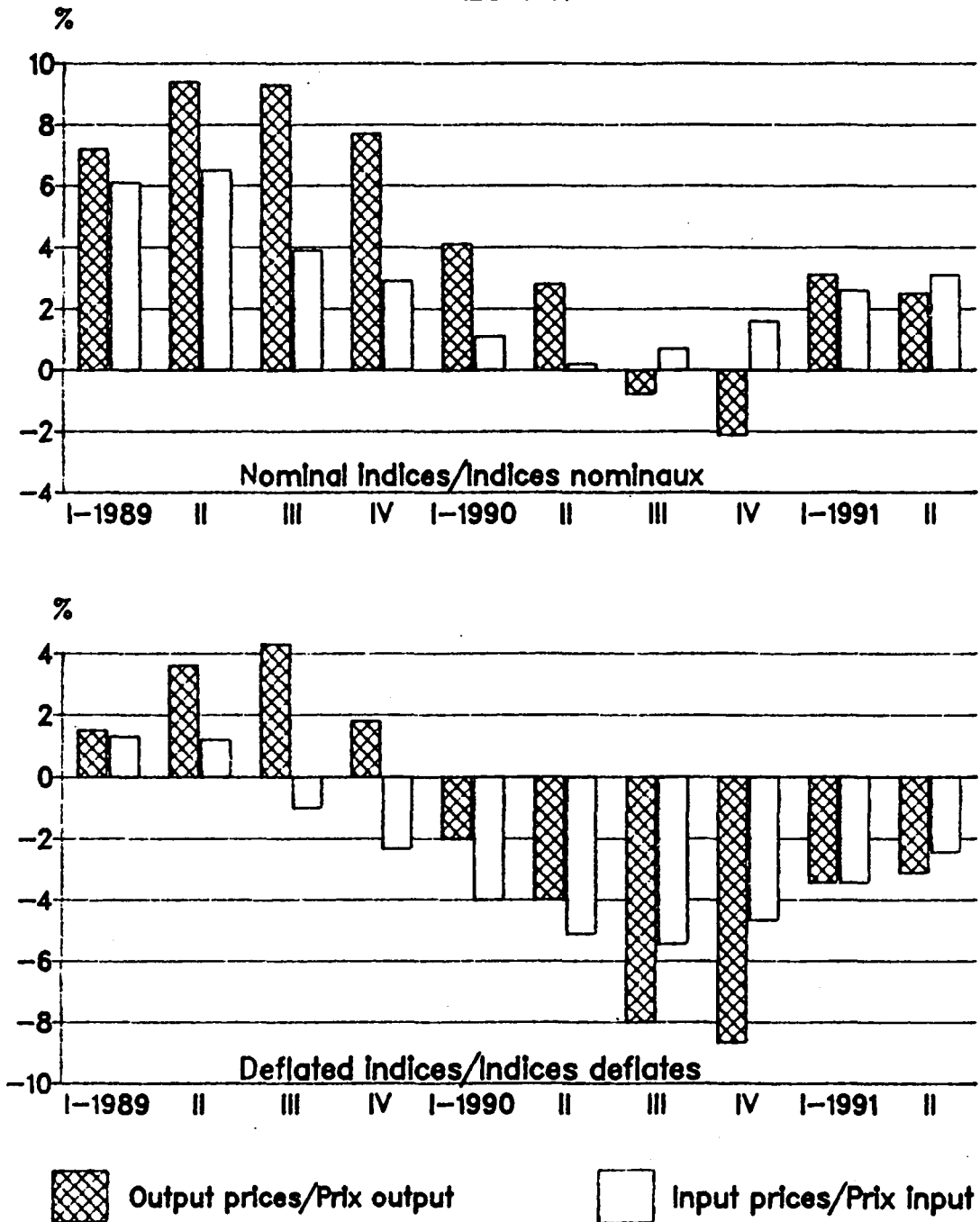
(1) On the base / sur la base 1985 = 100

a =  $\frac{07/90-09/90}{07/89-09/89}$ b =  $\frac{10/90-12/90}{10/89-12/89}$ c =  $\frac{01/91-03/91}{01/90-03/90}$ d =  $\frac{04/91-06/91}{04/90-06/90}$ 

(2) Data for the Federal Republic of Germany in its boundaries prior to 3 October 1990, including West Berlin /Données pour la République Fédérale d'Allemagne, dans sa situation territoriale avant le 3 octobre 1990, Berlin Ouest inclus.

TRENDS IN THE EC AGRICULTURAL PRICE INDICES(OUTPUT AND INPUT)  
 2nd Quarter 1991  
 EVOLUTION DES INDICES CE DES PRIX AGRICOLES(OUTPUT ET INPUT)  
 2eme Trimestre 1991

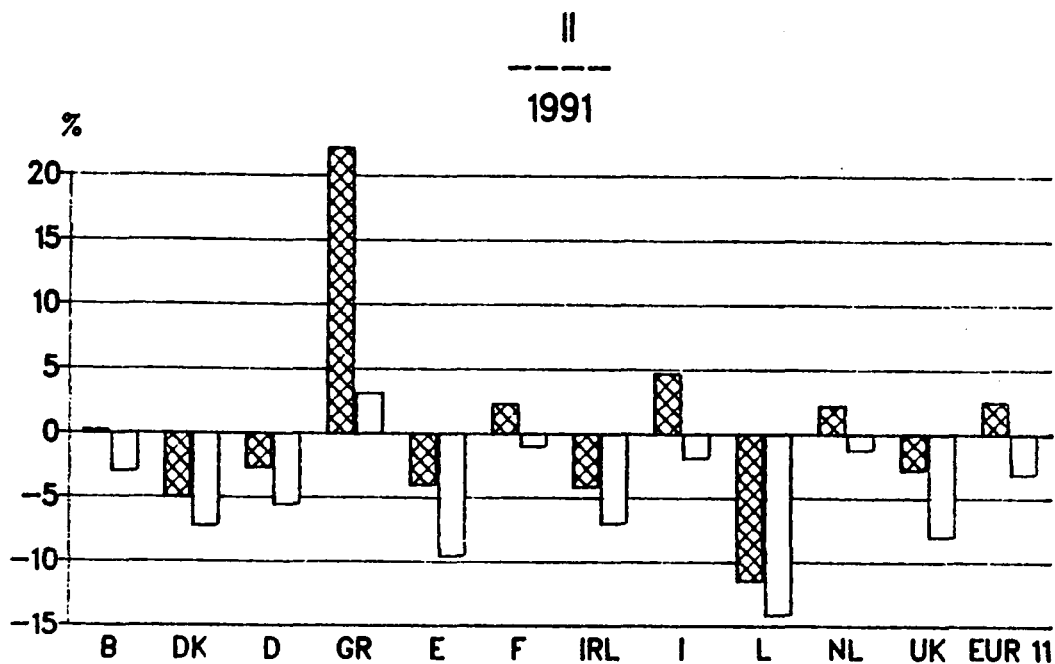
Rates of change over 12 months of the agricultural price indices  
 Taux de variation en 12 mois des indices des prix agricoles  
 EUR 11





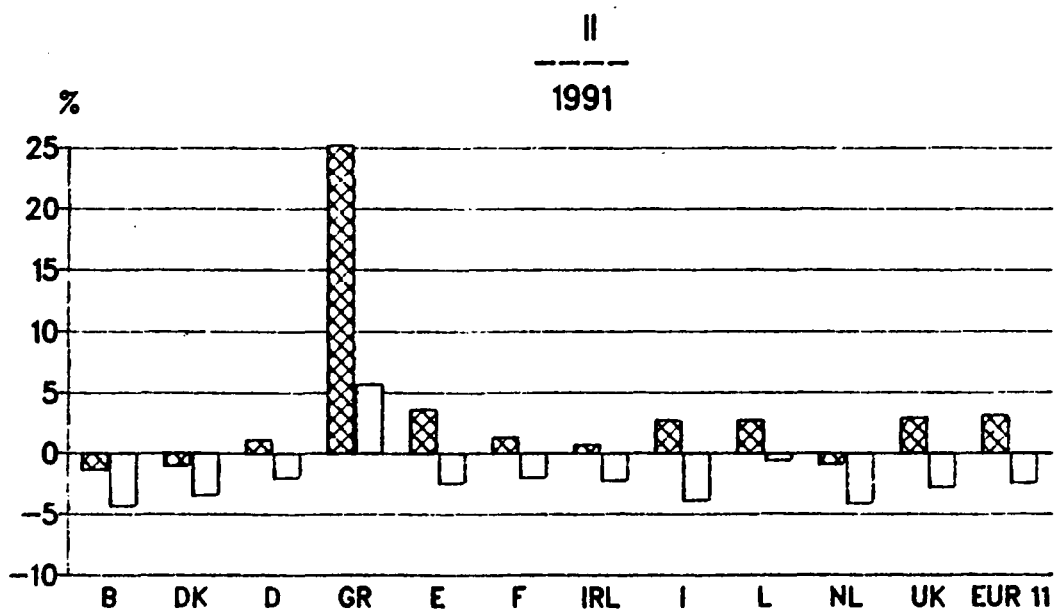
EC Index of producer prices of agricultural products:  
Rates of change of the price indices by Member States

Indice CE des prix a la production des produits agricoles:  
Taux de variation des indices des prix des Etats Membres



EC Indices of purchase prices of goods and services currently  
consumed in agriculture:  
Rates of change of the price indices by Member States

Indices CE des prix d'achat des biens et services de consommation  
courante de l'agriculture:  
Taux de variation des indices des prix des Etats Membres



Nominal Indices/Indices nominaux



Deflated Indices/Indices deflates





