

Farm structure in Spain – 2005

Every fifth holding is specialised in olive production

This Statistics in Focus is part of a series of country-specific publications on the results of the Farm Structure Survey (FSS) 2005. It provides a brief but nevertheless comprehensive insight into the farm structure in Spain. A similar publication was issued in March 2005 presenting the results of the FSS 2003 in Spain.

* * *

At the end of 2005 in Spain, about 959 thousand* agricultural holdings had an economic size of at least 1 European Size Unit (ESU).

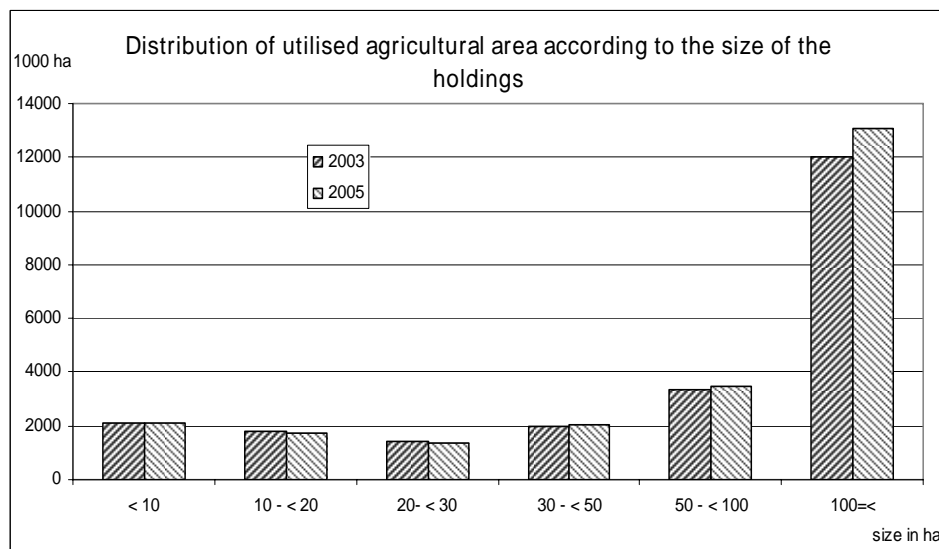
- These holdings employed 949.2 thousand AWUs (annual work units), the equivalent of 949.2 thousand persons working full time;
- they made use of about 23.7 million ha of agricultural area, which is on average 24.8 ha per holding (compared to 23.2 ha in 2003).

Among these 959 thousand agricultural holdings

- 62% made use of less than one AWU, while 11% made use of 2 or more AWUs;
- 49% used less than 5 ha agricultural area, while 5% used 100 ha or more;
- 20% were holdings of the type specialist olives, 18% specialist fruit and citrus fruit, 12% specialist cereals, oil seed and protein crops, 8% specialist vineyard and 7% were engaged in mixed cropping;
- 77% of their agricultural area was situated in less favoured or mountain areas;
- 2% were organic farms;
- 6% benefited from direct investment aid.

Among the 912 thousand sole holders

- 28% were women;
- 58% were aged 55 or more, and only 6% were younger than 35 years;
- 27% had another gainful activity as their major occupation.



Due to differences in the threshold across Member States, the total number of farms is not comparable between countries. This is why the present analysis, including Tables 1-4 and the graphs focus on holdings of at least one ESU. See methodological notes for more information on the concept of the ESU.

Statistics in focus

AGRICULTURE AND FISHERIES

24/2007

Agriculture

Authors

György BENOIST

PoI MARQUER

Contents

Table 1 – Labour force by size of the farms.....3

Table 2 – Agricultural holdings by size.....4

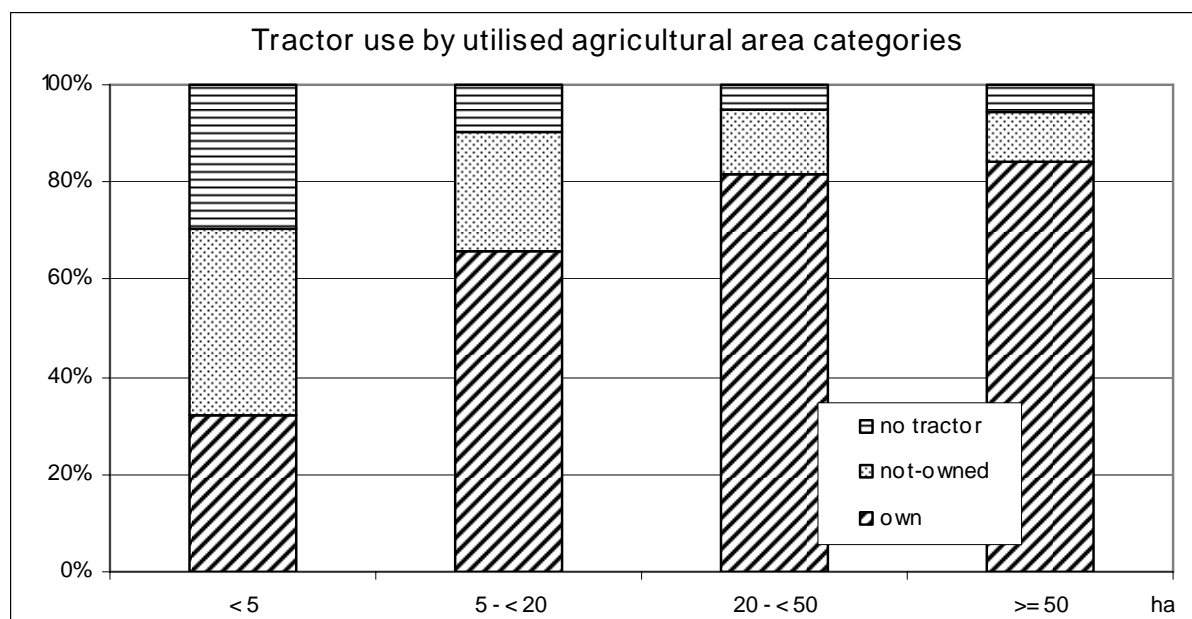
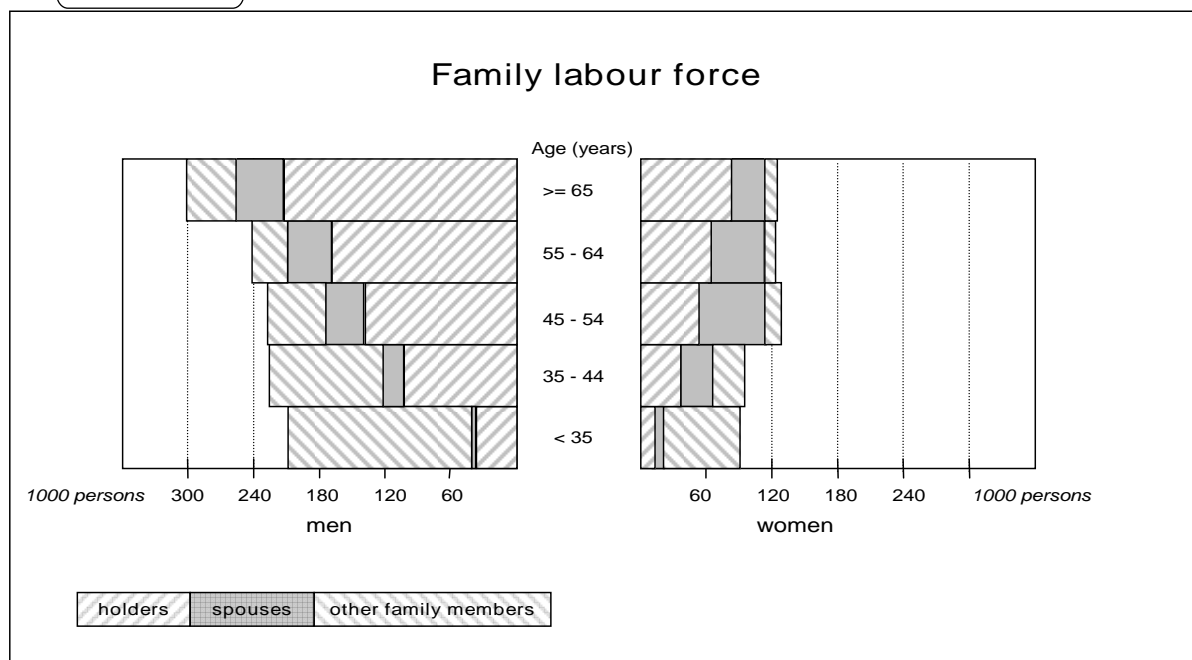
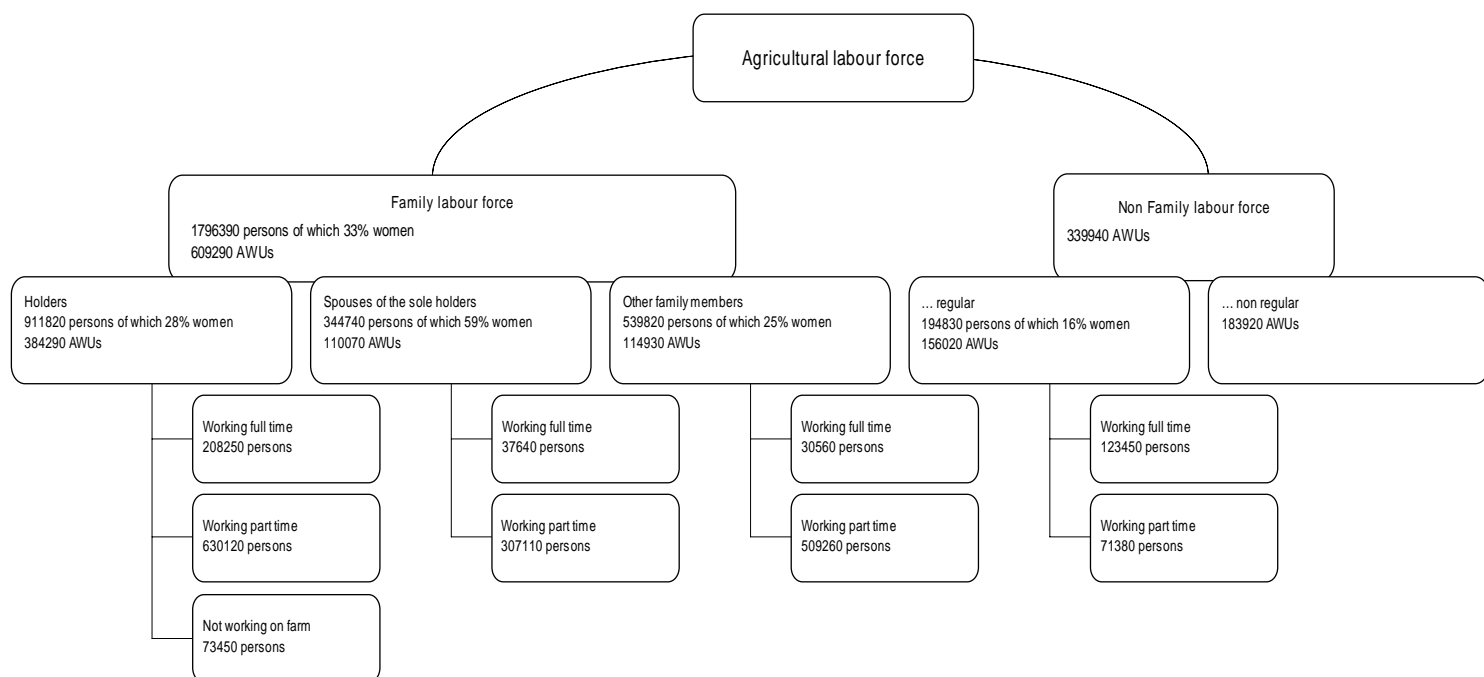
Table 3 – Land use by size of the farms.....5

Table 4 – Livestock by size of the farms.....6

Table 5 – Subsistence farming.7



Spain 2005 – Holdings of at least 1 ESU



Size of the farms	Agricultural area (ha)				All farms	Livestock (LU*)			
	< 5	5 - < 20	20 - < 50	50 = <		0	0 < - < 50	50 - < 100	100 = <
Total labour force									
1000 annual work units	305.3	266.1	147.8	230.1	949.2	552.3	272.1	47.9	76.9
Family labour force									
1000 persons	915.3	551.0	194.3	135.8	1796.4	1259.1	458.8	44.0	34.5
1000 annual work units	244.7	198.8	89.7	76.1	609.3	311.1	243.7	31.7	22.8
Non-family labour regularly employed									
1000 persons	41.7	34.7	32.8	85.6	194.8	115.0	18.4	14.5	46.9
1000 annual work units	31.1	27.1	25.5	72.4	156.0	85.0	15.0	12.7	43.3
Non regular non family labour force									
1000 annual work units	29.6	40.2	32.7	81.5	183.9	156.2	13.4	3.5	10.8
Holding managers (1000)	472.0	281.0	109.4	96.6	959.0	673.8	231.1	26.3	27.8
- women (%)	19.2	19.3	15.0	9.1	17.7	14.7	28.1	12.3	9.1
- part-time - under 50 % (%)	70.9	57.0	40.6	27.3	59.0	72.3	31.3	8.7	14.0
- 50 % and over(%)	13.8	15.4	16.4	20.6	15.3	12.5	24.0	13.1	13.9
- with a basic agricult. training only (%)	6.9	9.6	15.9	19.1	9.9	9.6	8.5	19.4	21.2
- with a full agricultural training (%)	0.8	0.7	2.0	4.3	1.2	1.3	0.7	1.7	4.2
Sole/main holders (1000)	462.8	272.5	100.4	76.0	911.8	645.8	225.9	22.4	17.7
- women (%)	29.6	28.7	23.4	15.7	27.5	26.0	33.8	16.1	16.3
- distribution by age (%)									
- under 35 years	4.8	5.0	8.0	8.2	5.5	5.4	4.8	13.1	9.0
- from 35 to 44 years	13.5	15.9	17.9	21.5	15.4	14.8	14.9	28.8	25.4
- from 45 to 54 years	19.7	22.0	23.1	23.3	21.1	20.4	21.8	27.5	28.9
- from 55 to 64 years	24.8	25.9	25.9	29.0	25.6	24.9	28.1	22.2	25.3
- 65 years and over	37.2	31.2	25.1	18.0	32.5	34.6	30.4	8.3	11.3
- part-time - under 50 % (%)	72.3	58.7	44.3	34.7	62.0	75.4	32.0	10.1	22.0
- 50 % and over(%)	14.1	15.9	17.9	26.1	16.1	13.0	24.5	15.3	21.8
- with another gainful activity ¹ (%)	36.1	31.3	21.9	17.6	31.4	37.2	19.6	10.2	15.8
- as main occupation	33.0	26.2	15.7	10.1	27.0	32.8	15.5	4.6	8.0
- as a subsidiary occupation	3.1	5.1	6.2	7.5	4.4	4.4	4.1	5.6	7.7
Spouse of sole holder working on the holding (1000)	176.0	110.4	35.9	22.4	344.7	217.4	110.8	9.5	7.0
- women (%)	57.5	57.9	61.2	71.7	58.9	60.1	54.2	73.2	74.9
- distribution by age (%)									
- under 35 years	4.2	4.1	4.8	5.7	4.3	4.2	3.7	10.4	6.4
- from 35 to 54 years	44.5	47.7	48.1	53.1	46.4	49.0	39.1	61.1	62.1
- 55 years and over	51.4	48.3	47.1	41.2	49.3	46.7	57.2	28.5	31.5
- part-time - under 50 % (%)	80.3	74.8	67.8	69.0	76.5	88.8	56.8	42.6	53.0
- 50 % and over(%)	11.9	12.2	14.2	17.3	12.6	6.9	22.4	19.6	22.2
- with another gainful activity (%)	30.5	30.9	28.4	21.9	29.8	33.8	23.6	17.5	22.8
Other members of the holder's family working on the holding (1000)	276.4	168.0	58.0	37.4	539.8	396.0	122.1	12.0	9.8
- women (%)	26.7	26.5	21.3	16.3	25.4	24.4	29.6	18.4	20.7
- part-time - under 50 % (%)	92.1	86.3	78.7	71.4	87.4	92.7	75.3	59.2	58.1
- 50 % and over(%)	4.6	8.3	10.3	12.7	6.9	4.0	14.6	17.9	17.0
- with another gainful activity (%)	62.7	59.3	54.1	48.8	59.8	63.3	52.6	37.5	32.9

Symbols : not available 0 less than half of the unit or nil

* LU = Livestock Unit

¹ Refers only to holders who are also farm managers.

Size of the farms	Agricultural area (ha)				All farms	Livestock (LU)			
	< 5	5 - < 20	20 - < 50	50 = <		0	0 < - < 50	50 - < 100	100 = <
Holdings									
- total number (1000)	472.0	281.0	109.4	96.6	959.0	673.8	231.1	26.3	27.8
- by legal personality of the holder (%)									
- sole holder	98.1	97.0	91.8	78.7	95.1	95.8	97.7	85.5	63.7
- legal person	1.9	3.0	8.2	21.3	4.9	4.2	2.3	14.5	36.3
- group holders	0.0	0.0	0.0	0.0	0.0	0.0	0.0	0.0	0.0
- by employed labour force (%)									
- under 1 AWU	75.5	60.3	39.8	26.8	62.0	74.7	37.7	8.3	8.7
- from 1 to less than 2 AWU	18.8	28.7	40.9	42.6	26.6	18.1	46.7	55.4	39.7
- from 2 to less than 3 AWU	4.3	8.3	13.3	14.9	7.6	4.1	13.5	26.7	25.3
- 3 AWU and over	1.4	2.7	6.0	15.6	3.7	3.2	2.1	9.6	26.3
- by economic size (%)									
- from 1 to less than 8 ESU	78.0	45.9	19.6	2.8	54.4	57.4	58.1	0.6	0.3
- from 8 to less than 16 ESU	12.7	25.1	25.9	9.6	17.5	18.6	17.7	7.0	0.4
- from 16 to less than 40 ESU	6.5	22.7	30.1	36.6	17.0	15.7	18.9	39.1	10.9
- from 40 to less than 100 ESU	2.0	5.1	20.0	31.9	8.0	6.2	4.7	49.0	39.9
- 100 ESU and over	0.9	1.2	4.3	19.2	3.2	2.1	0.7	4.3	48.5
- by farm type (%)									
- specialist olives	25.3	20.1	10.7	5.4	20.1	26.8	5.2	0.2	0.3
- specialist fruit and citrus fruit	29.1	10.9	5.0	2.0	18.3	24.0	6.1	0.1	0.1
- specialist cereals, oil seed and protein crops	2.7	12.8	25.6	36.5	11.7	14.0	7.5	1.5	0.6
- specialist vineyard	7.1	12.0	7.5	2.4	8.1	10.6	2.7	0.0	0.0
- mixed cropping	5.3	6.5	9.4	10.0	6.6	6.0	9.5	1.1	1.2
- other types of farming	30.4	37.7	41.8	43.8	35.2	18.6	69.1	97.0	97.8
- by farming methods (%)									
- organic farming	0.9	1.4	2.3	3.7	1.5	1.6	1.2	2.1	2.4
- irrigating	51.0	43.5	45.7	44.6	47.6	51.6	39.9	27.6	31.5
- with fixed irrigation equipment	56.0	47.0	44.9	40.3	50.5	53.4	45.7	32.6	37.1
- with crops under glass	5.7	1.6	0.8	0.4	3.4	3.9	2.4	0.5	0.4
- benefiting of direct investment aids	2.7	5.7	10.8	14.8	5.7	3.3	8.4	25.9	22.8
- using a tractor (%)									
- with their own tractor	32.2	65.6	81.5	84.4	52.9	47.3	63.1	75.6	80.6
- using a combine harvester (%)									
- with another gainful activity than agricultural production (%)									
- tourism	0.1	0.6	0.7	1.1	0.4	0.3	0.6	0.9	1.2
- handicraft	0.0	0.0	0.1	0.0	0.0	0.0	0.0	0.1	0.1
- processing of farm products	1.5	1.4	1.6	1.3	1.5	0.9	3.1	2.5	1.6
- wood processing	0.0	0.0	0.0	0.1	0.0	0.0	0.0	0.0	0.1
- aquaculture	0.0	0.0	0.0	0.1	0.0	0.0	0.0	0.0	0.0
- renewable energy production	0.0	0.0	0.0	0.2	0.0	0.0	0.0	0.1	0.3
- contractual work	0.0	0.2	0.9	1.8	0.4	0.3	0.5	1.2	0.9
- other gainful activities n.a.e.	0.5	1.4	1.6	1.8	1.0	1.2	0.6	1.0	1.7

Symbols : not available 0 less than half of the unit or nil

Size of the farm (1000 ha)	Agricultural area (ha)				All farms	Livestock (LU)			
	< 5	5 - < 20	20 - < 50	50 =<		0	0 < - < 50	50 - < 100	100 =<
Area									
Total area of agricultural holdings	1577.2	3648.6	4057.3	21117.7	30400.7	18311.8	5166.6	2204.9	4717.5
Other area	586.3	794.1	668.5	4610.8	6659.7	4399.5	992.4	365.6	902.2
Wooded area	260.0	427.4	381.2	2800.1	3868.7	2497.5	554.0	218.0	599.2
Agricultural area	990.9	2854.4	3388.7	16506.9	23741.0	13912.4	4174.2	1839.3	3815.2
Arable land	198.9	968.1	1839.4	8849.0	11855.4	7790.0	2091.0	734.2	1240.2
Cereals	77.3	543.6	1150.2	5338.7	7109.8	4714.0	1258.6	412.1	725.2
<i>Common wheat and spelt</i>	10.6	94.4	226.7	1012.7	1344.5	873.1	282.9	70.9	117.5
<i>Durum wheat</i>	8.2	64.3	110.0	745.0	927.5	657.2	120.5	48.4	101.5
<i>Rye</i>	1.5	6.2	15.1	98.4	121.2	43.2	35.5	18.3	24.2
<i>Barley</i>	21.0	229.8	560.7	2604.6	3416.0	2446.9	550.7	156.3	262.2
<i>Oats</i>	6.8	46.2	91.8	537.7	682.4	295.9	150.4	85.7	150.3
<i>Grain maize</i>	22.4	72.7	109.3	234.7	439.1	267.2	97.5	26.0	48.4
Dried pulses	7.2	42.1	52.2	390.6	492.0	326.7	91.4	27.9	46.0
Root crops	10.8	22.1	37.3	104.0	174.2	123.4	37.6	5.6	7.6
<i>Potatoes</i>	9.9	10.9	13.2	23.4	57.3	35.0	19.7	1.1	1.4
<i>Sugar beet</i>	0.4	10.1	23.5	77.7	111.7	86.0	16.5	3.2	6.0
<i>Fodder root</i>	0.5	1.1	0.7	2.9	5.2	2.3	1.3	1.3	0.3
Industrial crops	7.5	65.9	104.7	490.4	668.5	533.7	82.7	18.5	33.6
<i>Tobacco</i>	1.5	4.9	2.1	4.4	12.9	9.1	3.2	0.3	0.3
<i>Hops</i>	0.2	0.0	0.0	0.0	0.2	0.2	0.0	0.0	0.0
<i>Cotton</i>	2.3	21.2	14.6	45.7	83.8	72.9	4.7	1.3	4.9
<i>Rape and turnip</i>	0.0	0.1	1.5	4.3	5.9	4.5	0.5	0.1	0.8
<i>Sunflower</i>	2.5	38.3	84.0	400.9	525.7	416.7	68.4	15.0	25.6
<i>Soya</i>	0.0	0.0	0.2	1.2	1.4	1.0	0.1	0.0	0.3
Fresh vegetables, melons, strawberry	56.6	57.5	43.7	125.2	283.0	240.7	27.4	5.0	9.9
<i>outside</i>	30.0	47.8	40.5	118.6	236.8	199.1	23.6	4.5	9.7
<i>under glass</i>	26.6	9.7	3.2	6.5	46.1	41.6	3.8	0.5	0.2
Flower and ornamental plants	2.6	1.7	1.0	0.9	6.1	5.4	0.5	0.0	0.2
<i>outside</i>	1.0	1.2	0.8	0.7	3.7	3.4	0.2	0.0	0.2
<i>under glass</i>	1.5	0.5	0.2	0.2	2.4	2.0	0.4	0.0	0.0
Forage plants	18.2	97.8	142.5	384.7	643.2	212.9	177.0	112.9	140.5
Fallow land	18.6	137.2	307.7	2013.3	2476.8	1631.7	415.8	152.3	277.0
Kitchen garden	1.7	1.4	0.5	0.3	3.9	1.5	2.2	0.1	0.1
Permanent pasture and meadows	112.2	589.8	667.5	6293.9	7663.4	2440.6	1707.5	1049.6	2465.7
Permanent crops	678.2	1295.1	881.4	1363.7	4218.3	3680.2	373.6	55.3	109.2
Fruit and berry plantation	147.3	295.7	165.8	195.3	804.2	656.7	109.2	14.2	24.1
Citrus plantation	110.0	72.3	35.3	64.6	282.3	263.0	14.6	0.8	3.9
Olive trees	329.2	596.1	420.7	759.2	2105.2	1823.6	183.4	31.6	66.7
Vineyard	88.9	327.9	257.2	339.4	1013.4	926.7	64.7	8.7	13.3
Ratios									
Agricultural area per holding (ha)	2.1	10.2	31.0	171.0	24.8	20.6	18.1	70.0	137.1
Agricultural area... (%)									
... own farmed	92.1	82.3	67.8	63.2	67.4	72.3	59.9	52.0	64.9
... in less favoured or mountain area	60.6	71.8	75.2	79.8	77.4	74.0	82.2	84.3	81.1
... organic farmed	0.8	1.1	1.4	1.5	1.4	1.2	1.3	1.4	2.1
... irrigated	32.6	22.1	19.4	10.5	14.1	18.9	8.9	6.1	6.1

Symbols : not available 0 less than half of the unit or nil

Size of the farm	Agricultural area (ha)				All farms	Livestock (LU)		
	< 5	5 - < 20	20 - < 50	50 = <		0 < - < 50	50 - < 100	100 = <
Total livestock (1000 LU)	4391.5	2861.4	2500.8	4644.1	14397.8	2481.9	1824.1	10091.8
of which grazing (%)	24.6	46.9	50.5	60.3	45.1	89.4	85.6	26.8
Grazing livestock (1000 heads)								
Equidae	58.1	62.0	33.9	71.0	225.0	136.5	35.3	53.2
Bovine animals	790.9	1321.1	1259.9	2469.1	5840.8	1885.3	1256.8	2698.8
Under 1 year	347.0	353.9	397.3	743.8	1842.0	526.4	392.0	923.6
From 1 to less than 2 years	90.3	131.5	165.2	306.6	693.6	153.4	147.4	392.8
Dairy cows	103.1	381.8	324.8	192.3	1001.9	409.2	267.0	325.7
Other cows	168.5	322.5	264.5	796.2	1551.7	596.8	298.6	656.2
Other bovine animals 2 years and older	82.0	131.4	108.1	430.2	751.7	199.5	151.7	400.5
Sheep	4106.3	2622.1	3095.6	9802.9	19626.9	5950.4	5791.0	7885.4
Goats	1144.4	480.9	267.2	624.2	2516.7	1461.3	623.7	431.8
Granivores								
Pigs (1000 heads)	8230.5	4387.4	3998.6	6141.9	22758.3	876.6	1008.4	20873.3
Piglets < 20 kg	2331.8	1087.1	1030.3	1610.6	6059.8	393.9	547.6	5118.4
Breeding sows	1250.6	562.4	589.6	975.3	3377.8	192.6	193.8	2991.4
Other pigs	4648.1	2737.9	2378.8	3556.0	13320.7	290.2	267.1	12763.5
Poultry (million heads)	100.4	33.5	19.0	21.2	174.1	3.8	8.5	161.7
Broilers	50.6	21.7	14.2	10.5	96.9	1.6	7.5	87.8
Laying hens	39.8	7.7	2.7	9.5	59.8	1.9	0.9	56.9
Other poultry	10.0	4.0	2.0	1.3	17.4	0.3	0.1	17.0
Rabbits, breeding females (1000 heads)	814.4	327.0	83.3	52.7	1277.4	1096.3	106.3	74.7
Beehives* (1000)	463.2	228.5	90.0	48.5	830.3	192.9	10.0	20.3
Average size of herds**								
Equidae (head/holding)	2.2	3.3	4.0	7.0	3.6	2.6	6.6	9.5
Cattle (head/holding)	21.1	28.0	58.6	127.8	46.5	19.1	83.7	225.8
Dairy cows (head/holding)	9.0	19.3	40.0	64.2	23.6	12.2	44.8	107.8
Other cows (head/holding)	7.5	11.4	22.2	69.0	21.0	9.8	41.9	105.2
Sheep (head/holding)	133.2	132.8	271.7	556.2	246.6	99.1	495.0	1005.1
Goats (head/holding)	66.3	53.5	66.6	104.4	69.5	51.7	119.6	157.8
Pigs (head/holding)	196.9	121.4	273.9	459.0	214.9	10.6	123.2	1383.3
Breeding sows (head/holding)	98.1	50.2	95.6	111.3	86.9	7.5	40.8	360.7
Other pigs > 20 kg (head/holding)	134.8	91.2	194.4	322.2	151.7	4.3	39.3	941.0
Rabbits, breeding females (head/holding)	41.5	23.9	17.1	18.2	31.1	28.7	56.6	73.2
Laying hens (1000/holding)	0.6	0.1	0.1	0.7	0.4	0.0	0.1	9.1
Broilers (1000/holding)	2.1	1.2	2.0	2.1	1.8	0.0	2.0	20.9
Beehives (hive/holding)	91.1	56.3	55.6	61.4	71.9	21.7	20.4	52.2

Symbols : not available 0 less than half of the unit or nil

* Bees are not taken into account when calculating Livestock Unit, there are 341.6 thousand hives on holdings with 0 LU.

** Number of animals of a given livestock category per holding with this kind of animal.

		Absolute figures			% of total	
		Total	< 1 ESU	>= 1 ESU	< 1 ESU	>= 1 ESU
Regular labour force	(1000 persons)	2185.7	194.5	1991.2	8.9	91.1
Regular labour force	(1000 AWU)	807.7	42.4	765.3	5.3	94.7
Holders	(1000 persons)	1027.8	116.0	911.8	11.3	88.7
... at least 65 years old		359.4	63.4	296.0	17.6	82.4
... having another gainful activity		274.3	30.9	243.4	11.3	88.7
Number of holdings	(1000)	1079.4	120.4	959.0	11.2	88.8
... producing mainly for own consumption		4.0	1.6	2.3	41.5	58.5
... producing mainly for direct sales		2.5	0.2	2.3	8.0	92.0
... using a tractor		847.3	65.2	782.1	7.7	92.3
Standard Gross Margin (SGM)	(1000 ESU)	20002.8	64.7	19938.1	0.3	99.7
Agricultural area	(1000 ha)	24855.1	1114.1	23741.0	4.5	95.5
... owned farmed		17067.2	1070.2	15997.0	6.3	93.7
Livestock	(1000 LU)	14452.4	54.6	14397.8	0.4	99.6

Symbols : not available 0 less than half of the unit or nil

► METHODOLOGICAL NOTES

The survey on the structure of agricultural holdings in Spain was carried out between 1 October and 31 December 2005 on a sample basis. The previous full-scale agricultural census had been conducted in 1999. The reference period of the farm structure survey 2005 was the production year 2005 which ended on 30 September 2005. However, for livestock the reference date was the day of the interview.

The target population was all holdings in the last agricultural census, which exceeded one of the following three thresholds: at least 1 ha UAA or at least 0.2 ha UAA under vegetables, flowers and ornamental plants, production under protection or irrigated fruit trees or nurseries or at least 1 LSU and 0.75 ESU. A stratified simple random sample was drawn. The stratification was made separately for each autonomous community (NUTS 2) based on type of farming and size of the holding (5 size-classes determined by using economic size, LSU, UAA, AWU, total area). In the strata, optimum allocation was applied. Certain holdings were included in an exhaustive stratum created with the use of the sigma-gap rule to each key variable in each region. The total size of the sample was about 55.000.

For each activity ('enterprise') on a farm (for instance wheat, dairy cow or vineyard), a standard gross margin (SGM) is estimated, based on the area (or the number of heads) and a regional coefficient. The sum of such margins in a farm is its economic size, expressed in European Size Units (ESU). 1 ESU is equal to 1200 euros.

Each farm is classified in the community typology by its economic size and its type of farming, depending on the share of each

enterprise in its economic size. For instance, a farm where breeding sows account for more than 2/3 of the economic size, is classified as *specialist pig rearing* (type 5011). Depending on the level of aggregation, farms are grouped into 8 to 70 types.

Annual work unit (AWU) is equivalent to a worker employed on a full time basis for one year. In Spain it is 1824 hours (228 working days of 8 working hours per day).

Livestock Unit (LU) is equivalent to a dairy cow. The number of animals (number of heads) is converted into LU using a set of coefficients reflecting the feed requirements of the different animal categories.

Subsistence farming refers here to all farms below 1 ESU economic size. Note that the number of farms cannot be compared between countries due to the differences in coverage of FSS.

► REFERENCE PUBLICATIONS

Metodología. Año 2003, Instituto Nacional de Estadística, Madrid, 2005

Encuesta sobre la estructura de las explotaciones agrícolas 2005, Notas de prensa, Instituto Nacional de Estadística, Madrid, February 2005

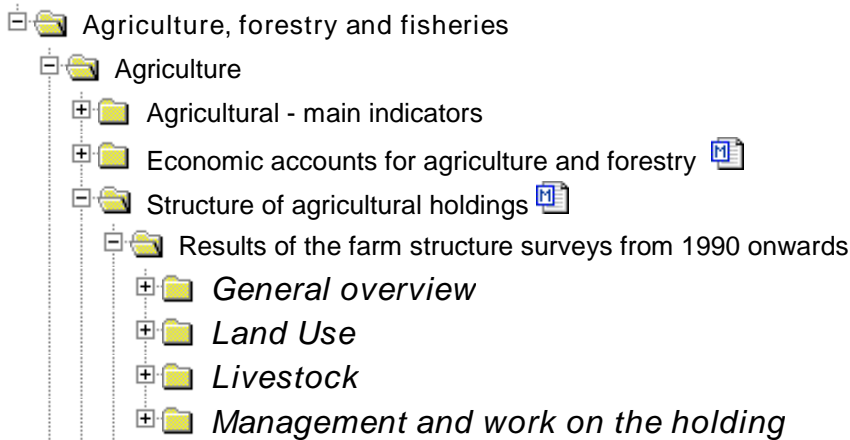
Results: [INEBASE/agricultura/encuesta sobre la estructura de las explotaciones agrícolas](#)

Website of the Instituto Nacional de Estadística: www.ine.es

National Methodological Report – FSS 2005 (available on request)

Further information:

Data: [EUROSTAT Website/Theme: Agriculture and Fisheries/Data](#)



Journalists can contact the media support service:

Bech Building Office A4/125
L - 2920 Luxembourg

Tel. (352) 4301 33408
Fax (352) 4301 35349

E-mail: eurostat-mediasupport@ec.europa.eu

European Statistical Data Support:

Eurostat set up with the members of the 'European statistical system' a network of support centres, which will exist in nearly all Member States as well as in some EFTA countries.

Their mission is to provide help and guidance to Internet users of European statistical data.

Contact details for this support network can be found on our Internet site: <http://ec.europa.eu/eurostat/>

A list of worldwide sales outlets is available at the:
Office for Official Publications of the European Communities.
2, rue Mercier
L - 2985 Luxembourg

URL: <http://publications.europa.eu>

E-mail: info-info-opoce@ec.europa.eu
