

# Statistics in focus

## AGRICULTURE AND FISHERIES

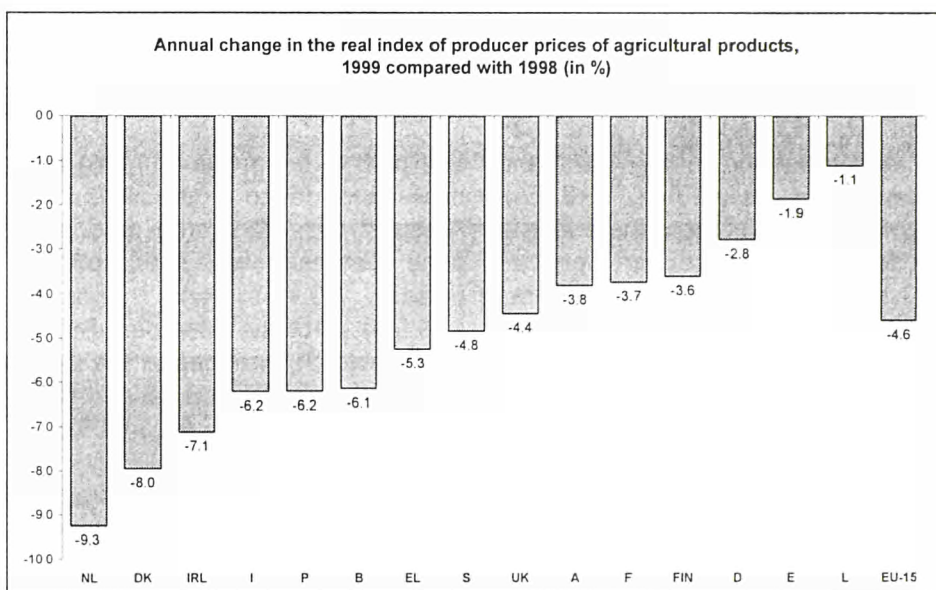
THEME 5 – 23/1999

### Contents

Output prices .....	2
Input prices .....	2
Terms of trade .....	3

# ESTIMATE OF AGRICULTURAL PRICE TRENDS IN THE EUROPEAN UNION IN 1999

*G. Mahon*



The index of prices of agricultural products is estimated to have declined (-2.8%) in nominal terms in the European Union, EU-15, in 1999. In real (i.e. deflated) terms, the price index for agricultural products declined markedly (-4.6%) thus continuing the downward trend seen since 1996. The price decrease for 1999 was due to both crop products (notably fruit, cereals and rice, and fresh vegetables) and animals and animal products (mainly pigs, milk, poultry, cattle excluding calves, and eggs).

Across Member States (see graph) declines in real output prices were seen in all cases, especially Ireland (-7.1%), Denmark (-8.0%) and the Netherlands (-9.3%). Decreases in the other twelve Member States ranged from -1.1% in Luxembourg to -6.2% in Portugal.

The index of prices of the means of agricultural production, i.e. input prices, also declined for EU-15 in both nominal terms (-1.0%) and real terms (-2.8%) mainly due to a price decrease for fertilizers and animal feedingstuffs. The agricultural terms of trade (output prices vs. input prices) also fell (-1.9%).

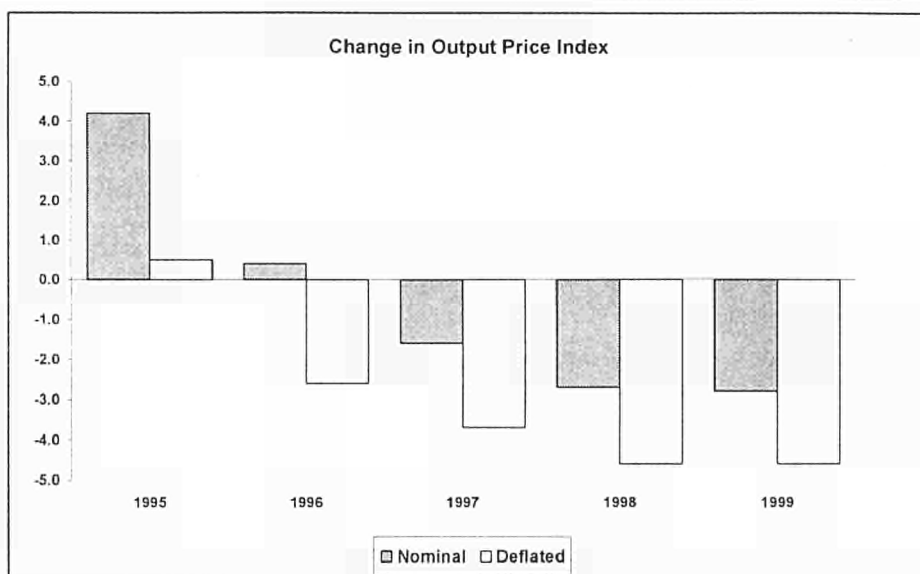
The estimates presented in this report reflect information available to Eurostat on 31 October 1999. Price indices were calculated by the Member States for at least seven months of the year, and projections made for the remaining months.



## Output prices

Concerning producer prices of agricultural products (see Table 1), the decline in the real output price index overall, in the price index for crop products, and in that for animals and animal products, have already been noted.

The real price index for crop products declined (-3.0%) and price decreases were seen for most of the product groups:- root crops (-0.1%), cereals and rice (-2.6%), fresh vegetables (-3.3%), flowers and ornamental plants (-3.7%), seeds (-4.6%), "other crop products" (-4.9%) and fruit (-11.8%). In contrast, price increases were seen for wine must and wine (+1.3%) and olives and olive oil (+8.9%). Concerning root crops, there was a moderate price rise for potatoes (+3.1%) but a fall for sugar beet (-3.2%). For cereals and rice, price decreases were seen for most products, including feeding barley (-0.3%), paddy rice (-0.5%), malting barley (-2.4%), "other cereals" i.e. rye, sorghum etc. (-2.5%), soft wheat (-4.9%), oats (-5.5%) and durum wheat (-12.8%). Grain maize was the exception, showing a moderate price increase (+2.4%). The marked price fall for fruit was

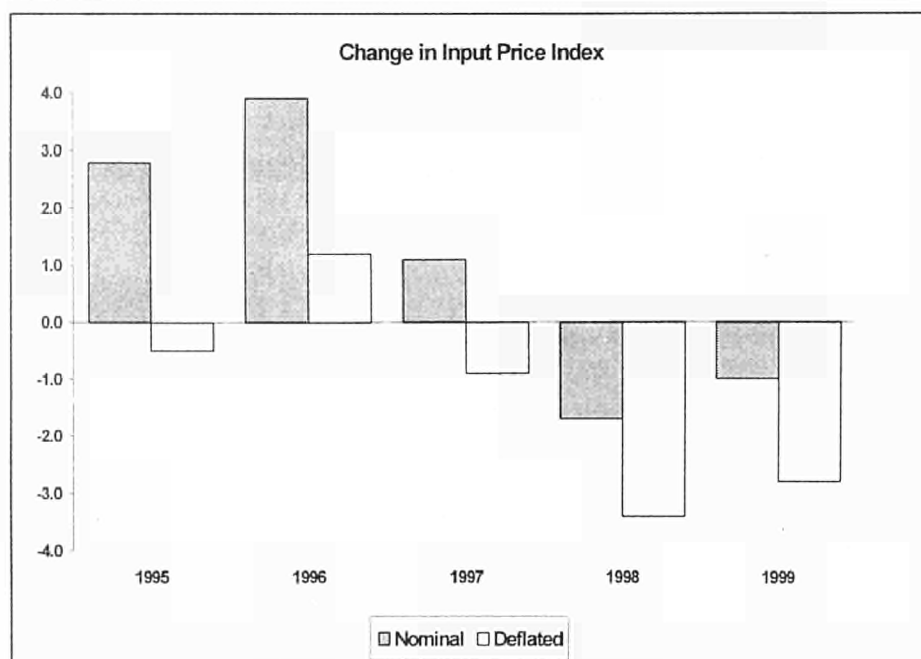


due both to fresh fruit (-11.5%) and nuts and dried fruit (-13.7%). Amongst the "other crop products", price decreases were seen both for pulses (-5.1%) and oilseeds (-19.0%). Across Member States (see Table 2), changes in the price index for crop products ranged from +7.4% in Sweden to -6.6% in Greece.

For animals and animal products, the real price index overall declined markedly (-6.3%). Price decreases were seen for animals for slaughter or export (-6.6%) and for all groups

of animals:- calves (-2.9%), cattle excluding calves (-4.2%), sheep and lambs (-6.6%), "other animals" i.e. horses, rabbits etc. (-8.1%), pigs (-8.7%) and poultry (-10.2%). Concerning animal products, there was a marked price decrease for milk, the most important product (-5.0%) and also for "other animal products" i.e. honey, wool, hides etc. (-8.7%) and eggs (-11.9%). The real price index for animals and animal products fell in all Member States, especially the Netherlands (-12.2%).

## Input prices



The index of purchase prices of the means of agricultural production (see Table 3) declined for EU-15 in both nominal terms (-1.0%) and real terms (-2.8%). This price decrease continued the long-term downward trend in real agricultural input prices.

The real price index of goods and services for current consumption in agriculture declined (-3.5%). Price decreases were seen for almost all these current inputs, including the most important ones:- fertilizers (-4.8%) and animal feedingstuffs (-7.3%). In contrast, there was a slight price rise for energy (+0.6%).

The real price index for goods and services contributing to agricultural



investment declined by a small amount (-0.8%), as a result of decreases in the prices of machin-

ery (-0.9%) and buildings (-0.4%).


Across Member States (see Table

4) falls in overall input prices were seen in all cases, and ranged from -1.1% in Germany to -4.3% in Spain.

## Terms of trade

The agricultural terms of trade, calculated by dividing the real output price index by the real input price index, showed a moderate decline (-1.9%) for EU-15 in 1999 relative to 1998. A decrease in input prices was combined with a steeper decline in output prices. Thus the long-term downward trend in the terms of trade was continued. The agricultural terms of trade index usually fluctuates less from year to year than either of its component indices. Input prices move partly to offset the effects of output price changes. One factor here is the significant share of animal feedingstuffs in the composition of the input index.

Across Member States, the terms of trade decreased in most cases, especially in the Netherlands (-5.5%), Ireland (-5.6%) and Denmark (-5.7%). In contrast, the terms of trade rose in Spain (+2.5%) due to the sharp decline of input

	(%)				
 eurostat	1995	1996	1997	1998	1999 *
<b>B</b>	-5.6	-2.1	-0.4	-1.3	-4.4
<b>DK</b>	-1.0	-1.6	-1.9	-9.6	-5.7
<b>D</b>	0.5	-3.5	-0.9	-2.7	-1.7
<b>EL</b>	2.5	-1.4	0.7	-0.6	-3.1
<b>E</b>	7.0	-4.4	-6.8	-1.5	2.5
<b>F</b>	-0.9	-3.6	-2.0	2.3	-1.3
<b>IRL</b>	-0.1	-8.1	-5.6	-0.4	-5.6
<b>I</b>	1.6	-1.6	-0.6	0.5	-3.8
<b>L</b>	-2.6	-4.5	1.0	0.6	0.2
<b>NL</b>	-0.4	-2.1	4.8	-2.4	-5.5
<b>A</b>	-24.2	-2.6	-0.3	-5.7	-1.5
<b>P</b>	9.9	-1.1	-3.6	8.5	-3.1
<b>FIN</b>	-7.4	-16.0	-3.1	0.1	-1.4
<b>S</b>	-5.2	-8.9	-4.0	0.0	-1.2
<b>UK</b>	5.9	-6.7	-12.0	-6.6	-3.0
<b>EU-15</b>	1.1	-3.7	-2.8	-1.0	-1.9

\* Estimate

prices. Changes in the remaining eleven Member States ranged from -4.4% in Belgium to +0.2% in

Luxembourg. The trend in the terms of trade mainly reflects trends in the output price index.

## ► ESSENTIAL INFORMATION – METHODOLOGICAL NOTES

**Type of index:** The indices, from which the rates of change reported here were calculated, are Laspeyres type indices with base year 1990. That is, for the purposes of aggregation (over products or services within a Member State, and across Member States) the sub-indices were weighted by the values of sales or purchases in 1990. That year is also the reference year, i.e. 1990=100. For most items (exceptions being fruit and vegetables) the same weights are used for each month of the year.

**Deflation:** The EU agricultural price indices, output and input, are available in Eurostat's New Cronos database (PRAG domain) in both nominal and deflated form. By using the deflated indices it is possible to avoid the distortions in the nominal price indices caused by different inflation rates in the Member States. The nominal agricultural price indices are deflated by means of the consumer price index for each Member State. The terms "deflated" and "real" are used synonymously in this report.

**Germany:** The output and input price indices for Germany now refer to that country in its boundaries following October 1990. The national authority has calculated indices for Germany in its new frontiers on the basis 1991=100. Eurostat has re-referenced these indices to 1990=100 on the assumption that the change in the agricultural prices from 1990 to 1991 for Germany in its previous frontiers approximates to the change for the whole country.

Table 1

**EU Index of producer prices of agricultural products:  
Rates of change of the price indices for EU-15**

		(%)				
		1995	1996	1997	1998	1999 *
<b>NOMINAL INDICES</b>						
<b>0</b>	<b>TOTAL</b>	<b>4.3</b>	<b>0.4</b>	<b>-1.6</b>	<b>-2.6</b>	<b>-2.8</b>
<b>1</b>	<b>CROP PRODUCTS</b>	<b>9.3</b>	<b>-0.2</b>	<b>-3.2</b>	<b>1.5</b>	<b>-1.1</b>
11	Cereals and rice	2.5	-2.1	-9.4	-7.6	-0.8
12	Root crops	14.4	-24.0	-3.2	17.8	1.4
13	Fruit	15.3	0.0	2.6	3.4	-9.4
14	Fresh vegetables	4.4	4.0	4.2	2.4	-1.4
15	Wine must and wine	18.1	5.4	-5.4	6.0	3.2
16	Olives and olive oil	18.7	24.0	-25.4	-12.4	11.3
17	Seeds	13.6	-3.3	-4.3	1.5	-2.6
18	Flowers etc.	9.5	-1.5	4.8	3.4	-2.0
19	Other crop products	1.1	5.2	1.0	-1.1	-3.0
<b>2</b>	<b>ANIMALS AND ANIMAL PRODUCTS</b>	<b>-0.3</b>	<b>1.0</b>	<b>0.1</b>	<b>-6.7</b>	<b>-4.6</b>
21	Animals	-0.7	0.5	1.1	-10.7	-4.9
21 A	Calves	-0.1	-11.5	4.2	8.1	-1.2
21 B	Cattle excluding calves	-5.9	-12.9	0.9	1.3	-2.6
21 C	Pigs	6.9	10.9	1.7	-27.6	-7.3
21 D	Sheep and lambs	0.9	14.3	1.2	-11.9	-3.6
21 E	Poultry	-5.7	8.0	-1.4	-4.6	-8.4
21 F	Other animals	0.8	5.1	-1.6	2.5	-5.1
22	Milk	1.1	-0.5	-1.4	0.3	-3.3
23	Eggs	-6.7	20.9	-3.1	-8.0	-10.0
24	Other animal products	1.1	-2.9	5.6	-8.2	-6.4
<b>DEFLATED INDICES</b>						
<b>0</b>	<b>TOTAL</b>	<b>0.6</b>	<b>-2.6</b>	<b>-3.7</b>	<b>-4.5</b>	<b>-4.6</b>
<b>1</b>	<b>CROP PRODUCTS</b>	<b>5.0</b>	<b>-3.7</b>	<b>-5.5</b>	<b>-0.3</b>	<b>-3.0</b>
11	Cereals and rice	-1.0	-4.6	-11.4	-9.4	-2.6
12	Root crops	10.9	-26.4	-5.8	16.2	-0.1
13	Fruit	10.0	-4.1	-0.5	1.6	-11.8
14	Fresh vegetables	-0.5	0.5	1.1	0.2	-3.3
15	Wine must and wine	13.7	2.3	-6.6	4.4	1.3
16	Olives and olive oil	12.6	18.9	-28.7	-15.3	8.9
17	Seeds	10.6	-5.5	-6.4	-0.4	-4.6
18	Flowers etc.	6.5	-3.5	2.6	1.4	-3.7
19	Other crop products	-3.8	0.5	-1.8	-3.2	-4.9
<b>2</b>	<b>ANIMALS AND ANIMAL PRODUCTS</b>	<b>-3.4</b>	<b>-1.5</b>	<b>-1.9</b>	<b>-8.4</b>	<b>-6.3</b>
21	Animals	-3.8	-2.2	-0.8	-12.4	-6.6
21 A	Calves	-3.4	-14.3	2.5	6.7	-2.9
21 B	Cattle excluding calves	-8.5	-14.9	-0.8	-0.2	-4.2
21 C	Pigs	3.7	8.4	-0.3	-29.1	-8.7
21 D	Sheep and lambs	-3.2	10.9	-1.4	-15.0	-6.6
21 E	Poultry	-8.8	4.8	-3.2	-6.4	-10.2
21 F	Other animals	-3.6	0.7	-3.8	0.6	-8.1
22	Milk	-1.8	-2.6	-3.4	-1.4	-5.0
23	Eggs	-10.1	17.9	-5.5	-10.4	-11.9
24	Other animal products	-1.5	-5.1	3.5	-9.8	-8.7

\* Estimate

Table 2

**Index of producer prices of agricultural products:  
Rates of change by Member State**

(%)

	Total				Crop Products				Animals and anim. Products			
	1996	1997	1998	1999 *	1996	1997	1998	1999 *	1996	1997	1998	1999 *
NOMINAL INDICES												
<b>B</b>	1.8	1.7	-5.4	-5.2	-0.1	-3.0	5.3	-2.7	3.0	4.5	-11.4	-6.9
<b>DK</b>	1.5	0.5	-10.6	-6.2	-3.6	-1.1	-2.7	-4.5	4.3	1.4	-14.6	-7.1
<b>D</b>	-1.1	0.7	-5.8	-1.8	-5.5	-3.7	-1.2	-1.1	1.3	3.0	-8.0	-3.3
<b>EL</b>	6.9	3.4	0.7	-0.7	9.4	3.5	-0.3	-2.1	0.2	3.3	3.4	3.1
<b>E</b>	-0.4	-4.5	-1.9	0.4	-3.1	-9.1	2.5	4.8	4.6	3.5	-8.5	-7.1
<b>F</b>	0.1	-0.3	-0.7	-3.0	1.0	-3.0	0.8	-3.0	-0.9	2.6	-2.2	-3.0
<b>IRL</b>	-5.0	-6.1	-1.2	-4.6	-11.9	-8.7	15.0	0.2	-4.0	-5.7	-3.3	-5.3
<b>I</b>	2.0	0.0	-0.6	-4.1	2.5	0.7	0.8	-3.9	1.2	-1.2	-2.7	-4.6
<b>L</b>	-2.2	2.0	-0.1	0.3	12.9	4.4	0.4	-2.8	-5.1	1.4	-0.2	1.0
<b>NL</b>	1.9	5.1	-4.1	-7.3	0.4	6.1	3.3	-4.4	3.2	4.2	-10.8	-10.2
<b>A</b>	1.0	2.5	-6.8	-2.8	2.8	2.3	-3.8	-1.6	0.5	2.6	-7.7	-3.1
<b>P</b>	-0.6	-6.1	6.9	-3.8	-3.6	-10.9	20.1	-3.3	3.1	-0.6	-6.8	-4.3
<b>FIN</b>	-14.3	-1.4	-0.9	-2.2	-9.2	0.1	1.5	-1.7	-16.1	-2.0	-1.9	-2.5
<b>S</b>	-4.0	-2.1	-1.1	-3.6	-7.3	-6.6	3.8	8.8	-2.6	-0.4	-2.9	-8.3
<b>UK</b>	-1.5	-13.6	-8.9	-2.4	-7.6	-16.7	2.0	-2.5	2.4	-11.8	-14.8	-2.0
<b>EU-15</b>	0.4	-1.6	-2.6	-2.8	-0.2	-3.2	1.5	-1.1	1.0	0.1	-6.7	-4.6
DEFLATED INDICES												
<b>B</b>	-0.3	0.0	-6.3	-6.1	-2.1	-4.5	4.3	-3.8	0.9	2.8	-12.3	-7.9
<b>DK</b>	-0.7	-1.6	-12.2	-8.0	-5.6	-3.3	-4.5	-6.3	2.2	-0.8	-16.2	-8.4
<b>D</b>	-2.5	-1.1	-6.7	-2.8	-6.8	-5.4	-2.1	0.1	-0.2	1.2	-8.9	-4.3
<b>EL</b>	-1.5	-2.0	-3.9	-5.3	0.9	-2.0	-4.8	-6.6	-7.7	-2.2	-1.3	-1.6
<b>E</b>	-3.8	-6.3	-3.7	-1.9	-6.4	-10.8	0.7	2.5	1.0	1.5	-10.2	-9.2
<b>F</b>	-1.9	-1.5	-1.4	-3.7	-1.0	-4.1	0.1	-4.3	-2.9	1.4	-2.9	-3.1
<b>IRL</b>	-6.6	-7.4	-3.3	-7.1	-13.4	-10.1	12.5	-2.4	-5.6	-7.1	-5.4	-7.8
<b>I</b>	-1.9	-2.1	-2.4	-6.2	-1.4	-1.4	-1.1	-5.9	-2.6	-3.3	-4.5	-6.6
<b>L</b>	-3.5	0.6	-1.0	-1.1	11.4	2.9	-0.5	-4.2	-6.4	0.0	-1.1	-0.4
<b>NL</b>	-0.2	2.7	-6.0	-9.3	-1.7	3.7	1.3	-6.4	1.1	1.8	-12.5	-12.2
<b>A</b>	-0.8	1.2	-7.7	-3.8	0.9	1.0	-4.7	-2.7	-1.3	1.3	-8.6	-4.1
<b>P</b>	-3.6	-7.7	4.0	-6.2	-6.5	-12.5	16.9	-5.8	-0.1	-2.3	-9.3	-6.7
<b>FIN</b>	-14.8	-2.5	-2.3	-3.6	-9.7	-1.0	0.1	-3.2	-16.6	-3.1	-3.2	-3.9
<b>S</b>	-4.4	-2.6	-1.0	-4.8	-7.8	-7.1	3.9	7.4	-3.1	-1.0	-2.7	-9.5
<b>UK</b>	-3.9	-16.2	-11.9	-4.4	-9.8	-19.3	-1.4	-5.1	-0.1	-14.5	-17.6	-4.0
<b>EU-15</b>	-2.6	-3.7	-4.5	-4.6	-3.7	-5.5	-0.3	-3.0	-1.5	-1.9	-8.4	-6.3

\* Estimate

**EU Index of purchase prices of the means of agricultural production:  
Rates of change of the price indices for EU-15**

\* Estimate

Table 4

**Index of purchase prices of the means of agricultural production**  
**Rates of change by Member State**

(%)

	Total				Consumption goods				Investment goods			
	1996	1997	1998	1999 *	1996	1997	1998	1999 *	1996	1997	1998	1999 *
NOMINAL INDICES												
<b>B</b>	3.9	2.1	-4.1	-0.7	4.4	2.0	-5.1	-1.1	1.1	2.8	2.4	1.8
<b>DK</b>	3.1	2.4	-1.0	-0.6	3.3	2.4	-1.9	-1.3	2.2	2.6	2.3	2.1
<b>D</b>	2.5	1.6	-3.2	-0.1	2.9	1.9	-4.5	-0.5	1.1	0.8	0.6	0.9
<b>EL</b>	8.4	2.8	1.3	2.5	9.0	2.6	0.0	1.5	6.4	3.2	5.9	5.7
<b>E</b>	4.2	2.5	-0.4	-2.1	4.0	2.3	-1.2	-2.5	5.2	3.8	3.6	-0.1
<b>F</b>	3.8	1.7	-3.0	-1.9	4.1	1.7	-3.9	-2.7	2.4	1.4	0.9	1.9
<b>IRL</b>	3.4	-0.5	-0.8	1.1	3.8	-1.5	-2.2	1.0	2.1	2.4	3.5	1.5
<b>I</b>	3.6	0.6	-1.0	-0.3	3.0	-1.9	-2.6	-1.7	4.3	3.0	0.5	0.9
<b>L</b>	2.4	1.0	-0.7	0.1	3.7	0.7	-2.4	-1.2	0.9	1.4	1.5	1.6
<b>NL</b>	4.0	0.2	-1.7	-1.8	4.7	0.4	-3.1	-2.9	2.1	-0.2	2.5	1.3
<b>A</b>	3.7	2.8	-1.2	-1.3	5.0	3.8	-3.1	-2.9	2.1	1.5	1.3	0.8
<b>P</b>	0.5	-2.6	-1.5	-0.7	-0.4	-4.4	-2.5	-1.4	4.4	4.7	2.5	1.4
<b>FIN</b>	2.1	1.8	-1.0	-0.8	2.3	2.7	-2.7	-2.2	1.7	-0.1	2.5	1.9
<b>S</b>	5.5	1.9	-1.1	-2.4	6.9	2.2	-1.9	-1.0	1.2	1.0	1.2	-6.6
<b>UK</b>	5.6	-1.8	-2.5	0.4	6.1	-2.6	-3.3	0.3	2.6	2.9	2.2	0.8
<b>EU-15</b>	3.9	1.1	-1.8	-1.0	4.1	0.7	-3.0	-1.8	3.2	2.2	1.4	1.1
DEFLATED INDICES												
<b>B</b>	1.9	0.4	-5.1	-1.8	2.3	0.3	-6.1	-2.2	-0.9	1.1	1.4	0.7
<b>DK</b>	0.9	0.2	-2.8	-2.4	1.1	0.2	-3.7	-3.1	0.1	0.4	0.5	0.2
<b>D</b>	1.0	-0.2	-4.1	-1.1	1.5	0.1	-5.4	-1.5	-0.3	-1.0	-0.3	-0.1
<b>EL</b>	-0.1	-2.6	-3.3	-2.2	0.4	-2.8	-4.6	-3.2	-1.9	-2.2	1.0	0.9
<b>E</b>	0.6	0.6	-2.1	-4.3	0.4	0.3	-2.9	-4.7	1.6	1.8	1.7	-2.3
<b>F</b>	1.7	0.5	-3.6	-2.5	2.0	0.5	-4.6	-3.3	0.3	0.2	0.2	1.3
<b>IRL</b>	1.6	-2.0	-2.9	-1.6	2.0	-2.9	-4.3	-1.7	0.4	0.9	1.2	-1.1
<b>I</b>	-0.3	-1.5	-2.9	-2.5	-0.9	-3.9	-4.4	-3.8	0.4	0.9	-1.4	-1.3
<b>L</b>	1.1	-0.4	-1.6	-1.3	2.3	-0.8	-3.3	-2.6	-0.5	-0.1	0.5	0.2
<b>NL</b>	1.9	-2.0	-3.6	-3.9	2.5	-1.9	-5.0	-5.0	0.0	-2.4	0.5	-0.8
<b>A</b>	1.8	1.5	-2.1	-2.4	3.1	2.5	-4.0	-3.9	0.2	0.2	0.3	-0.3
<b>P</b>	-2.6	-4.3	-4.2	-3.2	-3.4	-6.0	-5.2	-3.9	1.2	2.9	-0.3	-1.1
<b>FIN</b>	1.4	0.6	-2.4	-2.3	1.6	1.5	-4.1	-3.7	1.0	-1.3	1.1	0.4
<b>S</b>	5.0	1.4	-1.0	-3.7	6.4	1.7	-1.7	-2.3	0.8	0.5	1.4	-7.8
<b>UK</b>	3.1	-4.8	-5.7	-1.5	3.6	-5.6	-6.5	-1.6	0.1	-0.3	-1.1	-1.1
<b>EU-15</b>	1.2	-0.9	-3.5	-2.8	1.5	-1.2	-4.7	-3.5	0.3	0.1	-0.3	-0.7

\* Estimate

# Further information:

## ➤ Data bases

New Cronos  
Domain PRAG

To obtain information or to order publications, data bases and special sets of data, please contact the **Data Shop network**:

BELGIQUE/BELGIË	DANMARK	DEUTSCHLAND	ESPAÑA	FRANCE	ITALIA – Roma
<b>Eurostat Data Shop</b> <b>Bruxelles/Brussel</b> Chaussée d'Etterbeek 13 Etterbeeksesteenweg 13 B-1049 BRUXELLES / BRUSSEL Tel. (32-2) 299 66 66 Fax (32-2) 295 01 25 E-Mail: <a href="mailto:datashop.brussels@eurostat.cec.be">datashop.brussels@eurostat.cec.be</a>	<b>DANMARKS STATISTIK</b> <b>Bibliotek og Information</b> <b>Eurostat Data Shop</b> Sejrøgade 11 DK-2100 KØBENHAVN Ø Tel. (45-39) 17 30 30 Fax (45-39) 17 30 03 E-Mail: <a href="mailto:bib@dst.dk">bib@dst.dk</a>	<b>STATISTISCHES BUNDESAMT</b> <b>Eurostat Data Shop Berlin</b> Otto-Braun-Straße 70-72 D-10178 BERLIN Tel. (49-30) 23 24 64 27/28 Fax (49-30) 23 24 64 30 E-Mail: <a href="mailto:datashop@statistik-bund.de">datashop@statistik-bund.de</a>	<b>INE Eurostat Data Shop</b> Paseo de la Castellana, 183 Oficina 009 Entrada por Estébanez Calderón E-28046 MADRID Tel. (34-91) 583 91 67 Fax (34-91) 579 71 20 E-Mail: <a href="mailto:datashop.eurostat@ine.es">datashop.eurostat@ine.es</a>	<b>INSEE Info Service</b> <b>Eurostat Data Shop</b> 195, rue de Bercy Tour Gamma A F-75582 PARIS CEDEX 12 Tel. (33-1) 53 17 88 44 Fax (33-1) 53 17 88 22 E-Mail: <a href="mailto:datashop@insee.fr">datashop@insee.fr</a>	<b>ISTAT</b> <b>Centro di Informazione Statistica</b> <b>Sede di Roma, Eurostat Data Shop</b> Via Cesare Balbo, 11a I-00184 ROMA Tel. (39-06) 46 73 31 02/06 Fax (39-06) 46 73 31 01/07 E-Mail: <a href="mailto:dipdfff@istat.it">dipdfff@istat.it</a>
ITALIA – Milano	LUXEMBOURG	NEDERLAND	NORGE	PORTUGAL	SCHWEIZ/SUISSE/SVIZZERA
<b>ISTAT</b> <b>Ufficio Regionale per la Lombardia</b> <b>Eurostat Data Shop</b> Via Fieno 3 I-20123 MILANO Tel. (39-02) 65 95 133/134 Fax (39-02) 65 30 75 E-mail: <a href="mailto:mileuro@tin.it">mileuro@tin.it</a>	<b>Eurostat Data Shop Luxembourg</b> BP 453 L-2014 LUXEMBOURG 4, rue A. Weicker L-2721 LUXEMBOURG Tel. (352) 43 35 22 51 Fax (352) 43 35 22 21 E-Mail: <a href="mailto:dslux@eurostat.datashop.lu">dslux@eurostat.datashop.lu</a>	<b>STATISTICS NETHERLANDS</b> <b>Eurostat Data Shop-Voorburg</b> po box 4000 2270 JM VOORBURG Nederland Tel. (31-70) 337 49 00 Fax (31-70) 337 59 84 E-Mail: <a href="mailto:datashop@cbs.nl">datashop@cbs.nl</a>	<b>Statistics Norway</b> <b>Library and Information Centre</b> <b>Eurostat Data Shop</b> Kongens gate 6 P. b. 8131, dep. N-0033 OSLO Tel. (47-22) 86 46 43 Fax (47-22) 86 45 04 E-Mail: <a href="mailto:datashop@ssb.no">datashop@ssb.no</a>	<b>Eurostat Data Shop Lisboa</b> <b>INE/Serviço de Difusão</b> Av. António José de Almeida, 2 P-1000-043 LISBOA Tel. (351-21) 842 61 00 Fax (351-21) 842 63 64 E-Mail: <a href="mailto:data.shop@ine.pt">data.shop@ine.pt</a>	<b>Statistisches Amt des Kantons</b> <b>Zürich, Eurostat Data Shop</b> Bleicherweg 5 CH-8090 Zürich Tel. (41-1) 225 12 12 Fax (41-1) 225 12 99 E-Mail: <a href="mailto:datashop@zh.ch">datashop@zh.ch</a> Internetadresse: <a href="http://www.zh.ch/statistik">http://www.zh.ch/statistik</a>
SUOMI/FINLAND	SVERIGE	UNITED KINGDOM	UNITED KINGDOM	UNITED STATES OF AMERICA	
<b>Eurostat Data Shop Helsinki</b> <b>Tilastokirjasto</b> Postiosoite: PL 2B Käyntiosoite: Työpajakatu 13 B, 2 krs FIN-00022 Tilastokeskus Tel. (358-9) 17 34 22 21 Fax (358-9) 17 34 22 79 S-posti: <a href="mailto:datashop.tilastokeskus@tilastokeskus.fi">datashop.tilastokeskus@tilastokeskus.fi</a> Internetadresse: <a href="http://www.tilastokeskus.fi/ttkk/datashop.html">http://www.tilastokeskus.fi/ttkk/datashop.html</a>	<b>STATISTICS SWEDEN</b> <b>Information service</b> <b>Eurostat Data Shop</b> Karlavägen 100 - Box 24 300 S-104 51 STOCKHOLM Tel. (46-8) 50 69 48 01 Fax (46-8) 50 69 48 99 E-Mail: <a href="mailto:infoservice@scb.se">infoservice@scb.se</a> URL: <a href="http://www.scb.se/info/datashop/eurostatshop.asp">http://www.scb.se/info/datashop/eurostatshop.asp</a>	<b>Eurostat Data Shop</b> <b>Enquiries &amp; advice and publications</b> <b>Office for National Statistics</b> Customers & Electronic Services Unit 1 Drummond Gate - B1/05 UK-LONDON SW1V 2QQ Tel. (44-171) 533 56 76 Fax (44-1633) 812 762 E-Mail: <a href="mailto:eurostat.datashop@ons.gov.uk">eurostat.datashop@ons.gov.uk</a>	<b>Eurostat Data Shop</b> <b>Electronic Data Extractions, Enquiries &amp; advice - R.CADE</b> Unit 1L Mounjoy Research Centre University of Durham UK - DURHAM DH1 3SW Tel. (44-191) 374 7350 Fax (44-191) 384 4971 E-Mail: <a href="mailto:r-cade@dur.ac.uk">r-cade@dur.ac.uk</a> URL: <a href="http://www.rcade.dur.ac.uk">http://www.rcade.dur.ac.uk</a>	<b>HAVER ANALYTICS</b> <b>Eurostat Data Shop</b> 60 East 42nd Street Suite 3310 USA-NEW YORK, NY 10165 Tel. (1-212) 986 93 00 Fax (1-212) 986 58 57 E-Mail: <a href="mailto:eurodata@haver.com">eurodata@haver.com</a>	

**Media Support Eurostat (for professional journalists only):**  
 Bech Building Office A3/48 • L-2920 Luxembourg • Tel. (352) 4301 33408 • Fax (352) 4301 32649 • e-mail: [media.support@cec.eu.int](mailto:media.support@cec.eu.int)

## For information on methodology:

G. MAHON, Eurostat/ F1, L-2920 Luxembourg, Tel. (352) 4301 37310, Fax (352) 4301 37317  
 ORIGINAL: English

Please visit our web site at <http://europa.eu.int/eurostat.html> for further information!

A list of worldwide sales outlets is available at the **Office for Official Publications of the European Communities**.

2 rue Mercier - L-2985 Luxembourg  
 Tel. (352) 2929 42118 Fax (352) 2929 42709  
 Internet Address <http://eur-op.eu.int/urfr/general/s-ad.htm>  
 e-mail: [info.info@cec.eu.int](mailto:info.info@cec.eu.int)

BELGIQUE/BELGIË - DANMARK - DEUTSCHLAND - GREECE/ELLADA - ESPAÑA - FRANCE - IRELAND - ITALIA - LUXEMBOURG - NEDERLAND - ÖSTERREICH  
 PORTUGAL - SUOMI/FINLAND - SVERIGE - UNITED KINGDOM - ISLAND - NORGE - SCHWEIZ/SUISSE/SVIZZERA - BALGARIJA - ČESKÁ REPUBLIKA - CYPRUS  
 EESTI - HRVATSKA - MAGYARORSZÁG - MALTA - POLSKA - ROMÂNIA - RUSSIA - SLOVAKIA - SLOVENIA - TÜRKIYE - AUSTRALIA - CANADA - EGYPT - INDIA  
 ISRAEL - JAPAN - MALAYSIA - PHILIPPINES - SOUTH KOREA - THAILAND - UNITED STATES OF AMERICA

## Order form

I would like to subscribe to Statistics in focus (from 1.1.1999 to 31.12.1999):  
 (for the Data Shop and sales office addresses see above)

☐ **Formula 1:** All 9 themes (approximately 90 issues)

- ☐ Paper: 360 EUR  
☐ PDF: 264 EUR  
☐ Paper + PDF: 432 EUR

Language required: ☐ DE ☐ EN ☐ FR

☐ **Formula 2:** One or more of the following seven themes:

- ☐ Theme 1 'General statistics'  
☐ Paper: 42 EUR ☐ PDF: 30 EUR ☐ Combined: 54 EUR
- ☐ Theme 2 'Economy and finance'
- ☐ Theme 3 'Population and social conditions'
- ☐ Theme 4 'Industry, trade and services'
- ☐ Theme 5 'Agriculture and fisheries'
- ☐ Theme 6 'External trade'
- ☐ Theme 8 'Environment and energy'  
☐ Paper: 84 EUR ☐ PDF: 60 EUR ☐ Combined: 114 EUR
- Language required: ☐ DE ☐ EN ☐ FR

- ☐ Please send me a free copy of 'Eurostat Mini-Guide' (catalogue containing a selection of Eurostat products and services)  
 Language required: ☐ DE ☐ EN ☐ FR
- ☐ I would like a free subscription to 'Statistical References', the information letter on Eurostat products and services  
 Language required: ☐ DE ☐ EN ☐ FR

☐ Mr ☐ Mrs ☐ Ms

(Please use block capitals)

Name: \_\_\_\_\_ First name: \_\_\_\_\_

Company: \_\_\_\_\_ Department: \_\_\_\_\_

Function: \_\_\_\_\_

Address: \_\_\_\_\_

Post code: \_\_\_\_\_ Town: \_\_\_\_\_

Country: \_\_\_\_\_

Tel.: \_\_\_\_\_ Fax: \_\_\_\_\_

E-mail: \_\_\_\_\_

## Payment on receipt of invoice, preferably by:

- ☐ Bank transfer  
☐ Visa ☐ Eurocard

Card No: \_\_\_\_\_ Expires on: \_\_\_\_/\_\_\_\_/\_\_\_\_

## Please confirm your intra-Community VAT number:

If no number is entered, VAT will be automatically applied. Subsequent reimbursement will not be possible.