

1989 □ 14

### Sheep population and production still on the increase

Now that Greece has forwarded the results of the 1988 December survey on the sheep and goat populations, figures are available for all Member States.

EUR 12 has the largest sheep population in the world and can now meet 80% of its own demand. The population rose within one year by a further 4.9% to 95.3 million head.

The strikingly high growth rates in Denmark (+17.8%), Ireland (+16.1%) and Spain (+13.6%) are largely due to improvements in the statistical method. In Denmark, changes in the method of calculation led to a very high rate of increase in the very small national population. Due to discrepancies between the payments for ewe premiums, for which purpose all ewes were marked, and the statistics, all the sheep statistics from 1980 in Ireland were reviewed. The latest figures are based on an entirely new survey system and are considerably higher than previous ones. After exhaustive discussion with the statistical office in Ireland, Eurostat is convinced of the accuracy of the revised statistics. In Spain the population has evidently been greatly under-recorded so far. The changes in the system for recording animal populations made on accession to the Community are fully in line with Community requirements. The only remaining problems at present are with the registers of livestock holders which are not yet quite complete for various historical and administrative reasons. This problem should be eliminated soon in the course of continuous partial checks of the registers. The Irish and Spanish growth rates are thus largely due to statistical improvements; the growth rates in real terms are extremely difficult to estimate but are probably of the same order as the Community average.

At 29 million head, the British sheep population is by far the largest in the Community and increased last year by 4.4%. The population decreased in only two countries, Greece (-4.1%) and France (-2.4%). This means that in Francethe overall Community trend is still being opposed by a persistent decline. This is probably due to higher production costs than, for example, in the United Kingdom.



The production forecasts indicate that approximately 66.1 million sheep are to be slaughtered this year, 2.7% more than in 1988 (64.4 million head).

Figures 1 and 2 show the sheep population and/or gross indigenous production for each Member State in order of size. The most striking feature of these graphs is the reversal of the order between Italy and France. According to Fig. 1 Italy has the third largest and France the fifth largest population but in terms of gross indigenous production (Fig. 2) France is in third place and Italy in fifth.

#### Goat population increasing rapidly too

The goat population is currently increasingly markedly too, reaching 12.5 million head last year at a growth rate of 4.9%. The two Mediterranean countries, Greece and Spain, are at the top of the Community league, with Greece accounting for almost half the Community population - 47.9% - i.e. approximately 6 million animals. In 1988 the growth rate was 1.6%. Spain has almost exactly a quarter of the EUR 12 population (25.4%), i.e. 3.2 million goats. The same comments on the statistical method as for sheep apply to the Spanish goat statistics and, in turn, to the growth rate of 13.9%.

The increase of 40% in the United Kingdom is due to problems with the statistical recording of small holders and the inclusion of goats in the annual June census in 1987. The population has now exceeded the survey threshold at 122 000 head and the United Kingdom is thus obliged by an EC directive to conduct a statistical survey of the goat population every two years.

Production of goats in the Community rose by 4.8% in 1988 to 9 million head and will probably rise by a further 4.0% in 1989 to a record 9.4 million.

In the tables showing the size of the population (Fig. 3) and gross indigenous production (Fig. 4) for goats, there are also changes in the league order, just as for sheep. These illustrations highlight varying productivity in the Community.



Abbildung 1: Schafbestand (in Mio Stück)  
 Figure 1: Sheep population (million)  
 Graphique 1: Cheptel ovin (en million de têtes)

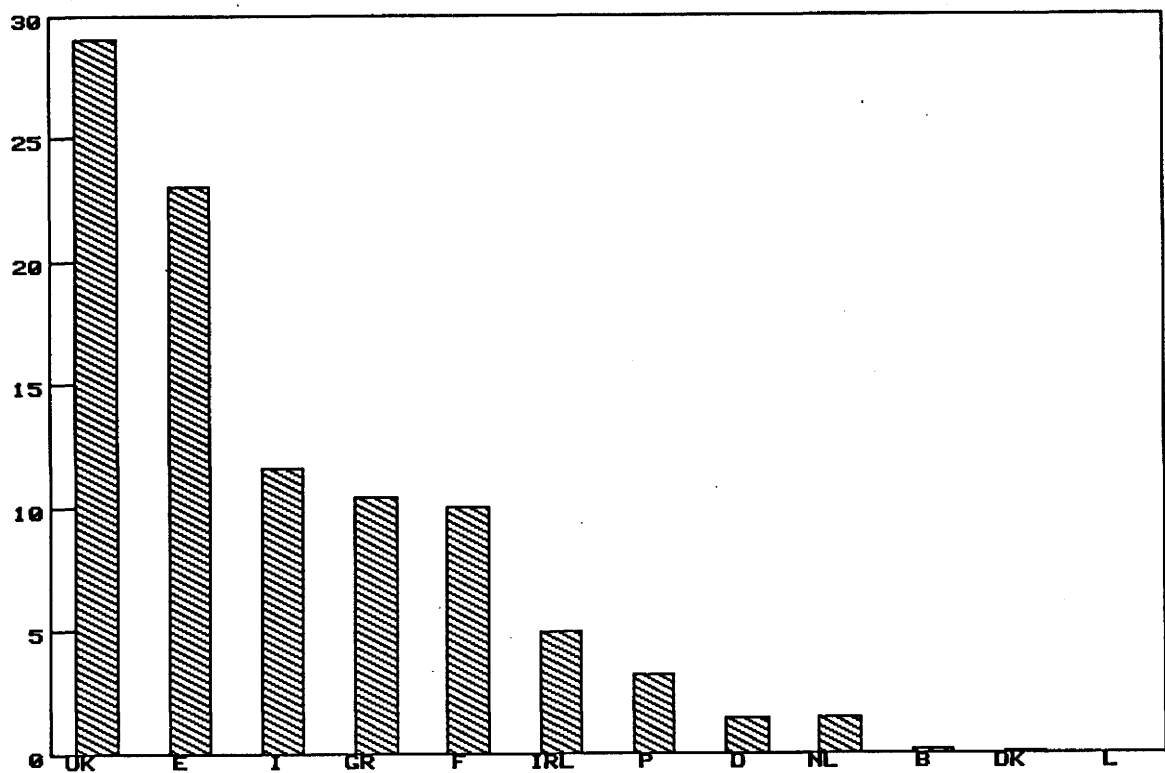


Abbildung 2: Bruttoeigenerzeugung an Schafen (in Mio Stück)  
 Figure 2: Gross indigenous production of sheep (million)  
 Graphique 2: Production indigène brute d'ovins (en million de têtes)

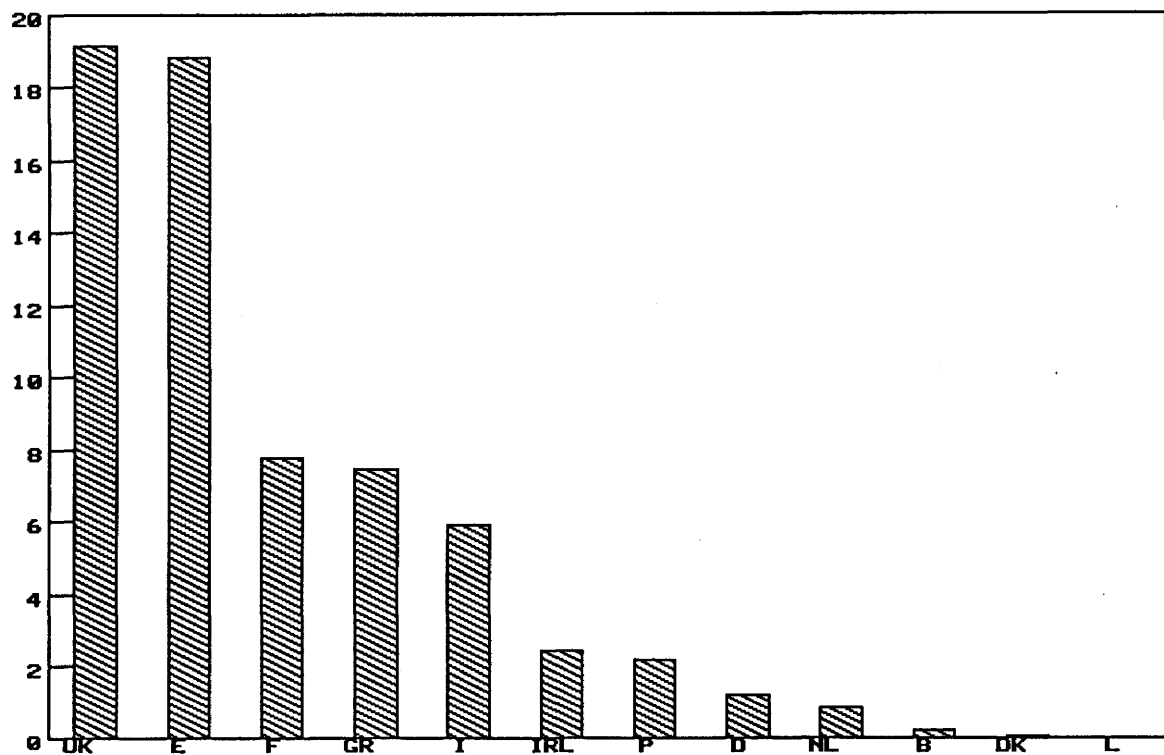


Abbildung 3: Ziegenbestand (in Mio Stück)  
 Figure 3: Goat population (million)  
 Graphique 3: Cheptel caprin (en million de têtes)

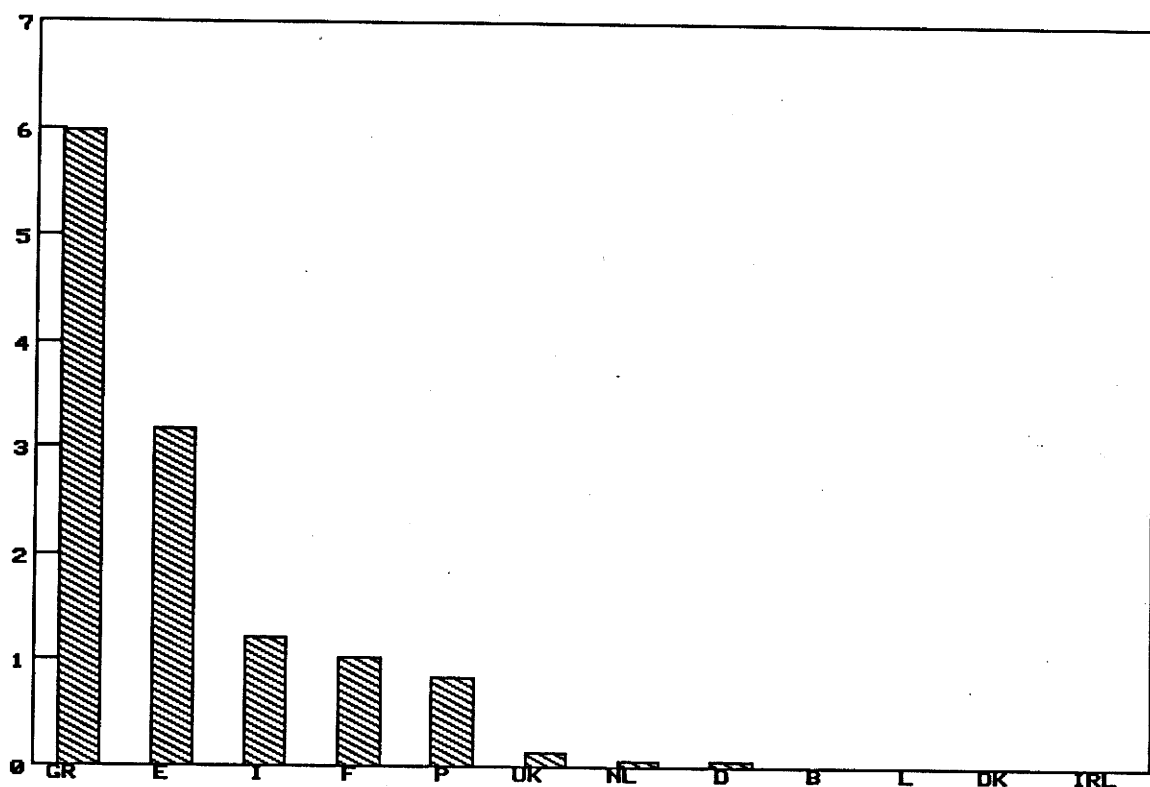
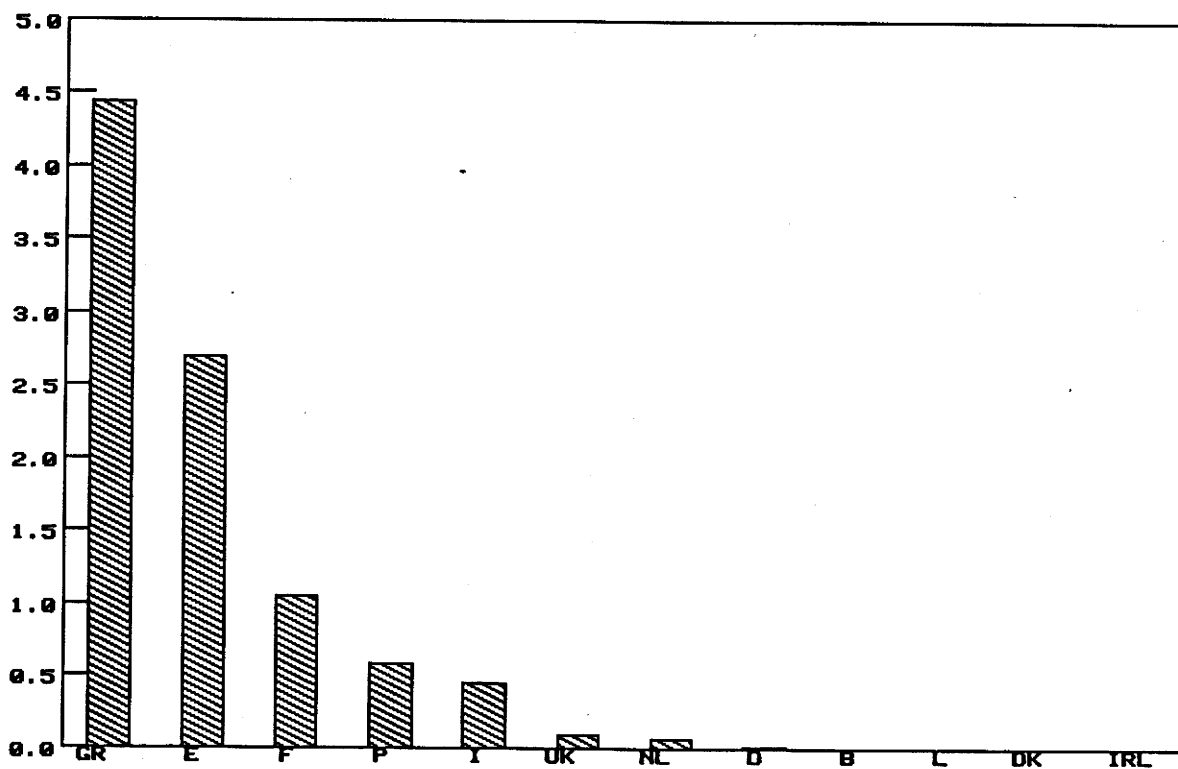


Abbildung 4: Bruttoeigenerzeugung an Ziegen (in Mio Stück)  
 Figure 4: Gross indigenous production of goats (million)  
 Graphique 4: Production indigène brute de caprins (en million de têtes)



17/ 7/1989

eurostat



## SCHAFBESTAND IM DEZEMBER

SHEEP POPULATION IN DECEMBER

EFFECTIFS OVINS EN DECEMBRE

1000 STUECK

1000 HEAD

1000 TETES

	EUR 10	EUR 12	B	DK	D	GR	E	F	IRL	I	L	NL	P	UK
INSGESAMT														
TOTAL														TOTAL
1985	62377	-:	124	52	1296	9989	16934	10791	3304	11293	4	985	-:	24540
1986	65410	86289	128	70	1383	11032	17879	10580	3672	11451	4	1115	3000	25976
1987	67560	90900	133	73	1414	10816	20305	10221	4301	11457	7	1320	3035	27820
1988	69074*	95323*	139	86	1430	10376	23062*	9972	4991	11623	7	1405*	3187	29045
% 88/87	2.2*	4.9*	4.4	17.8	1.1	-4.1	13.6*	-2.4	16.1	1.5	2.0	6.4*	5.0	4.4
ZUR ZUCHT BENUTZTE WEIBLICHE SCHAFE														
COVERED & ADULT FEMALES												AGNELLES SAILLIES ET BREBIS		
1985	44881	-:	98	39	913	6684	12181	8006	2406	8720	3	735	-:	17277
1986	46357	60915	97	51	962	7031	12559	7696	2663	8826	2	835	2000	18194
1987	47570	64184	103	57	1003	7019	14588	7333	3120	8802	5	990	2025	19139
1988	49037*	67774*	107*	68	1021	7219	16570*	7091	3600	8870	5	1055*	2167	20001
% 88/87	3.1*	5.6*	4.1*	19.3	1.8	2.9	13.6*	-3.3	15.4	0.8	5.9	6.6*	7.0	4.5

## ZIEGENBESTAND IM DEZEMBER

GOAT POPULATION IN DECEMBER

EFFECTIFS CAPRINS EN DECEMBRE

1000 STUECK

1000 HEAD

1000 TETES

	EUR 10	EUR 12	B	DK	D	GR	E	F	IRL	I	L	NL	P	UK
INSGESAMT														
TOTAL														TOTAL
1985	8008	-:	7	0	45	5696	2422	1005	0	1169	1	38	-:	48
1986	8925	12484	7	0	45	6600	2760	980	0	1201	1	43	800	48
1987	8284*	11877*	8	0	48	5876	2785	1003*	0	1206	1	55	808	87
1988	8450*	12462*	8*	0	52	5970	3173	1022	0	1214	1	60	840	122
% 88/87	2.0*	4.9*	0.0*	0	8.3	1.6	13.9	1.9*	0	0.7	38.9	9.1	4.0	40.2
ZUR ZUCHT BENUTZTE WEIBLICHE ZIEGEN														
COVERED & ADULT FEMALES												CHEVRES SAILLIES ET CHEVRES AYANT DEJA MIS BAS		
1985	5715	-:	0	0	0	3846	1698	865	0	979	0	0	-:	25
1986	6249	8520	0	0	0	4420	1691	842	0	962	0	0	580	25
1987	5881*	8488*	0	0	0	4017	2020	858*	0	961	0	0	586	45
1988	6026	8888	0	0	0	4105	2258	870	0	988	0	0	604	63
% 88/87	2.5*	4.7*	0	0	0	2.2	11.8	1.4*	0	2.8	0	0	3.1	40.0

SHEEP AND GOATS:  
GROSS INDIGENOUS PRODUCTION AND PRODUCTION FORECASTS

OVINS ET CAPRINS:  
PRODUCTION INDIGENE BRUTE ET PREVISIONS DE PRODUCTION  
17.7.1989 [10]

1000 HEAD

1000 TETES

	EUR 10	EUR 12	B	DK	D	GR	E	F	IRL	I	L	NL	P	UK
SHEEP														
1-6	20445	30255	83	12	487	5164	8773	4237	938	2530	0	365	1037	6629
7-12	22235	31899	106	41	735	2538	8651	4037	1134	3400	0	435	1013	9809
1987	42679	62153	189	53	1222	7701	17424	8274	2072	5930	0	800	2050	16438
1-6	21083*	31895*	85	14	480	4743	9682	4305	988*	2505*	0	361	1130	7602
7-12	22668*	32464*	108	49	700*	2588*	8776*	3690*	1160*	3400*	0	410*	1020*	10563
1988	43751*	64359*	193	63	1179*	7331*	18458*	7995*	2148*	5905*	0	771*	2150*	18165
1-6	21669*	32722*	88*	17*	490*	4816*	9893*	4180*	1130*	2508*	0	380*	1160*	8060*
7-12	23366*	33371*	112*	60*	718*	2628*	8955*	3580*	1320*	3422*	0	450*	1050*	11076*
1989	45035*	66093*	201*	77*	1208*	7444*	18848*	7760*	2450*	5930*	0	830*	2210*	19136*
1-6	3.1*	5.4*	2.4	16.7	-1.6	-8.1	10.4	1.6	5.3*	-1.0*	0.0	-1.1	9.0	14.7
7-12	1.9*	1.8*	1.9	19.5	-4.8*	2.0*	1.4*	-8.6*	2.3*	0.0*	0.0	-5.7*	0.7*	7.7
% 88/87	2.5*	3.5*	2.1	18.9	-3.5*	-4.8*	5.9*	-3.4*	3.7*	-0.4*	0.0	-3.6*	4.9*	10.5
1-6	2.8*	2.6*	4.0*	21.4*	2.2*	1.5*	2.2*	-2.9*	14.4*	0.1*	0.0	5.3*	2.7*	6.0*
7-12	3.1*	2.8*	4.0*	22.4*	2.6*	1.5*	2.0*	-3.0*	13.8*	0.6*	0.0	9.8*	2.9*	4.9*
% 89/88	2.9*	2.7*	4.0*	22.2*	2.4*	1.5*	2.1*	-2.9*	14.1*	0.4*	0.0	7.7*	2.8*	5.3*
GOATS														
1-6	4211	5550	0	0	4	2972	1015	850	0	335	0	26	324	25
7-12	1723	3076	0	0	3	1343	1101	169	0	138	0	32	252	38
1987	5934	8626	0	0	7	4315	2116	1019	0	473	0	58	576	63
1-6	4209*	5680*	0	0	4	2957	1174	864	0	316*	0	34	297	34
7-12	1760*	3362*	0	0	4*	1356*	1330*	172*	0	138*	0	36*	272*	54
1988	5969*	9042*	0	0	8*	4313*	2504*	1036*	0	454*	0	70*	569*	88
1-6	4318*	5890*	0	0	4*	3045*	1267*	879*	0	318*	0	35*	305*	37
7-12	1810*	3515*	0	0	4*	1397*	1430*	173*	0	140*	0	37*	275*	59
1989	6128*	9405*	0	0	8*	4442*	2697*	1052*	0	458*	0	72*	580*	96
1-6	-0.1*	2.3*	0.0	0.0	0.2	-0.5	15.7	1.6	0.0	-5.7*	0.0	30.8	-8.3	36.0
7-12	2.2*	9.3*	0.0	0.0	31.0*	1.0*	20.8*	1.8*	0.0	0.0*	0.0	12.5*	7.9*	42.1
% 88/87	0.6*	4.8*	0.0	0.0	13.3*	0.0*	18.3*	1.7*	0.0	-4.0*	0.0	20.7*	-1.2*	39.7
1-6	2.6*	3.7*	0.0	0.0	4.9*	3.0*	7.9*	1.7*	0.0	0.6*	0.0	2.9*	2.7*	8.8
7-12	2.8*	4.5*	0.0	0.0	2.4*	3.0*	7.5*	0.6*	0.0	1.4*	0.0	2.8*	1.1*	9.3
% 89/88	2.7*	4.0*	0.0	0.0	3.7*	3.0*	7.7*	1.5*	0.0	0.9*	0.0	2.9*	1.9*	9.1
ZIEGEN														
1-6	4211	5550	0	0	4	2972	1015	850	0	335	0	26	324	25
7-12	1723	3076	0	0	3	1343	1101	169	0	138	0	32	252	38
1987	5934	8626	0	0	7	4315	2116	1019	0	473	0	58	576	63
1-6	4209*	5680*	0	0	4	2957	1174	864	0	316*	0	34	297	34
7-12	1760*	3362*	0	0	4*	1356*	1330*	172*	0	138*	0	36*	272*	54
1988	5969*	9042*	0	0	8*	4313*	2504*	1036*	0	454*	0	70*	569*	88
1-6	4318*	5890*	0	0	4*	3045*	1267*	879*	0	318*	0	35*	305*	37
7-12	1810*	3515*	0	0	4*	1397*	1430*	173*	0	140*	0	37*	275*	59
1989	6128*	9405*	0	0	8*	4442*	2697*	1052*	0	458*	0	72*	580*	96
1-6	-0.1*	2.3*	0.0	0.0	0.2	-0.5	15.7	1.6	0.0	-5.7*	0.0	30.8	-8.3	36.0
7-12	2.2*	9.3*	0.0	0.0	31.0*	1.0*	20.8*	1.8*	0.0	0.0*	0.0	12.5*	7.9*	42.1
% 88/87	0.6*	4.8*	0.0	0.0	13.3*	0.0*	18.3*	1.7*	0.0	-4.0*	0.0	20.7*	-1.2*	39.7
1-6	2.6*	3.7*	0.0	0.0	4.9*	3.0*	7.9*	1.7*	0.0	0.6*	0.0	2.9*	2.7*	8.8
7-12	2.8*	4.5*	0.0	0.0	2.4*	3.0*	7.5*	0.6*	0.0	1.4*	0.0	2.8*	1.1*	9.3
% 89/88	2.7*	4.0*	0.0	0.0	3.7*	3.0*	7.7*	1.5*	0.0	0.9*	0.0	2.9*	1.9*	9.1
CAPRINS														
1-6	4211	5550	0	0	4	2972	1015	850	0	335	0	26	324	25
7-12	1723	3076	0	0	3	1343	1101	169	0	138	0	32	252	38
1987	5934	8626	0	0	7	4315	2116	1019	0	473	0	58	576	63
1-6	4209*	5680*	0	0	4	2957	1174	864	0	316*	0	34	297	34
7-12	1760*	3362*	0	0	4*	1356*	1330*	172*	0	138*	0	36*	272*	54
1988	5969*	9042*	0	0	8*	4313*	2504*	1036*	0	454*	0	70*	569*	88
1-6	4318*	5890*	0	0	4*	3045*	1267*	879*	0	318*	0	35*	305*	37
7-12	1810*	3515*	0	0	4*	1397*	1430*	173*	0	140*	0	37*	275*	59
1989	6128*	9405*	0	0	8*	4442*	2697*	1052*	0	458*	0	72*	580*	96
1-6	-0.1*	2.3*	0.0	0.0	0.2	-0.5	15.7	1.6	0.0	-5.7*	0.0	30.8	-8.3	36.0
7-12	2.2*	9.3*	0.0	0.0	31.0*	1.0*	20.8*	1.8*	0.0	0.0*	0.0	12.5*	7.9*	42.1
% 88/87	0.6*	4.8*	0.0	0.0	13.3*	0.0*	18.3*	1.7*	0.0	-4.0*	0.0	20.7*	-1.2*	39.7
1-6	2.6*	3.7*	0.0	0.0	4.9*	3.0*	7.9*	1.7*	0.0	0.6*	0.0	2.9*	2.7*	8.8
7-12	2.8*	4.5*	0.0	0.0	2.4*	3.0*	7.5*	0.6*	0.0	1.4*	0.0	2.8*	1.1*	9.3
% 89/88	2.7*	4.0*	0.0	0.0	3.7*	3.0*	7.7*	1.5*	0.0	0.9*	0.0	2.9*	1.9*	9.1

