

1989 □ 5

THE PIG POPULATION IN DECEMBER 1988

A further marked decrease in the pig population

The pig population survey carried out in all the Member States in December 1988 revealed a drop of 2.4% in the total population compared with the previous December survey and 1.7% compared with the August survey. The decline over the past year has now helped to end what was the worst pig market crisis since 1974. For several months the prices for all qualities of pig meat have been rising significantly and have now overtaken the marks for the previous two years. The positive yields once again offered by pig production are reflected in the considerable increases in the prices for piglets. In conjunction with what are still good prospects of exports to Japan and the United States (for which a downturn in domestic demand is forecast for the second half of 1989), the reduced production level in the Community promises a rise in prices with consumer income in real terms on the increase.

The overall figure for the decline in the pig population - taking the total to 101.4 million - is accounted for by a disproportionately large reduction in the population of piglets (-3.1%) and breeding sows (-5.7%). The major fall in the population of breeding sows, a slight reduction in pigs for fattening (-0.8% for animals between 80 and 110 kg) and even an increase in pigs for fattening of over 110 kg (+5.8%) document the end of the cautious temporising which characterised the pig breeders' behaviour at the end of last year. Perhaps the best indication of the holders' expectations is the number of the sows mated for the first time and the number of breeding sows not mated. As both populations have been cut by 8.1% and 7.8% respectively, the next few months promise further reductions in the population and lower production levels.

This development tallies with the production forecasts made by the Member States. Gross indigenous production in the Community for the period December 1988 to November 1989 is forecast to drop by 3.3%, i.e. by 5.4 million to 157.8 million animals. Whilst figures rose by 2% in December 1988 and January 1989 a reduction of between 4 and 2.7% is forecast for the following three two-month periods from February to July 1989. At the end of the forecasting period the production figures are forecast to fall sharply: by 7.8% in August/September and 4.1% in October/November 1989.

The sharpest drops in total pig numbers were registered in Luxembourg (-5.4%), in Spain and Portugal (-5.1% each) and in Germany (-4.1%), the United Kingdom (-3.7%) and the Netherlands (-2.9%). France recorded a below-average decrease (-1.8%), Italy (-0.3%) and Ireland (+0.1%) virtually no change and Denmark a slight increase (+0.6%). Belgium reported considerable growth of 4.8%. However, the introduction of registers in controlling swine fever in Belgium caused a break in the time series, with the result that the real development over time is difficult to assess at present. The 7.7% growth in the Greek populations is totally at odds with trends in the Community.

Survey on the structure of holdings: Major differences between countries persist despite shifts in structure

Every two years figures on the structure of pig holdings are recorded in all Member States in conjunction with the December survey. The results for 1987 (Federal Republic of Germany 1986) are now available in full and are presented here mainly in graphic form. The structural differences between the Member States are extremely pronounced. For reasons of clarity, the nine size classes of the structure survey were combined in the first two figures to form four classes:

- Very small holdings: 1 to 9 animals
- Small holdings: 10 to 199 animals
- Medium-sized holdings: 200 to 999 animals
- Large holdings: 1 000 and more.

Figures 1 and 2 break down the total number of holders into percentages for specific size classes and show what percentage of the total population these holdings account for. The high percentage of very small holdings (1-9 animals) in most of the Member States is striking (over 90% in some cases). However, in most cases they hold only a negligible percentage of the national population. In 1987 for example, 91.2% of all holdings in Italy were in the smallest class but accounted for only 10.4% of the entire Italian population, whereas 53.8% of the total population was kept on 0.4% of the holdings (those with more than 1 000 animals). Just as striking, too, is the fact that in Germany, by far the largest producer of pigs in the Community, the percentage of animals kept in large holdings is the lowest in the whole of the Community.

Figures 3 and 4 show each country's percentage share of the total pig population in EUR 12 in each size class (Fig. 3) and the number of holdings in EUR 12, again in each size class (Fig. 4). The national percentages of the total pig population or the entire number of holdings in EUR 12 can be seen from the margins of the two figures (TOT for total). These figures show, for example, that the relative significance of the German and Portuguese populations decreases as the size classes grow whilst the share of the Danish, Netherlands and UK populations increase. The two-fold structure in Italy and Spain, with one more traditional sector with a high percentage of very small holders and a modern sector with very large holdings, emerges clearly from the figures.

The two graphs depicting each country in Figure 5 show the results in percentages for the last three surveys on the structure of holdings (1983, 1985 and 1987) for all size classes. In each size class 1983, 1985 and 1987 are shown in the form of a bar chart, illustrating both the changes and differences in structure between the Member States. Despite the considerable differences in structure the direction of the shift (though not the pace) is the same in all countries. The importance of populations in small holdings and the share of the total accounted for by small holdings are on the decrease as a shift takes place towards medium-sized and large holdings. These graphs show the percentages and illustrate how the populations and holdings are broken down and where structural change is occurring. One thing is absolutely clear: structural change throughout is coinciding with a dramatic drop in the number of holdings in all size classes. The two structure tables show that in EUR 10 the number of holdings has fallen since 1983 by 39,4% from 1.86 million to only 1.13 million. This development coincided with a simultaneous growth in the pig population of 8.8% from 78.26 to 85.1 million animals.

Finally, we should point out that the French structure figures will probably be revised and that there is a peculiarity in the Luxembourg graphs. The considerable decline in the number of French holdings with 1 or 2 pigs is mainly due to statistical differences, while in Luxembourg the last three size classes were combined in 1983 for reasons of statistical confidentiality.

SCHWEINEBESTAND IN DEZEMBER

PIG POPULATION IN DECEMBER

EFFECTIFS PORCINS EN DECEMBRE

1000 HEAD

1000 STUECK

1000 TETES

	EUR 10	EUR 12	B	DK	D	GR	E	F	IRL	I	L	ML	P	UK
INSGESAMT														
TOTAL														TOTAL
1985	81923	::	5412	9104	24282	1095	12114	10956	994	9169	72	12908	0:	7930
1986	85226	::	5763	9422	24503	1130	15731	12063	980	9278	74	14063	0:	7955
1987	84213	103896	5881	9048	23670	1139	17228	11915	960	9383	77	14226	2455	7915
1988	82730	101406	6161	9105	22693	1226	16346	11706	961	9359	73	13820	2331	7626
% 88/87	-1.8	-2.4	4.8	0.6	-4.1	7.7	-5.1	-1.8	0.1	-0.3	-5.4	-2.9	-5.1	-3.7
FERKEL (<20 KG)														
PIGLETS (<20 KG)														PORCELETS (<20 KG)
1985	22697	::	1448	2780	6968	338	2974	2607	241	1797	27	4339	0:	2153
1986	23407	::	1526	2924	6824	346	3933	2876	219	1802	29	4682	0:	2165
1987	23165	28208	1547	2730	6558	368	4378	2801	217	1819	29	4913	665	2183
1988	22472	27338	1636	2812	6125	365	4222	2659	221	1821	28	4720	645	2085
% 88/87	-3.0	-3.1	5.7	3.0	-6.6	-0.8	-3.6	-5.1	1.7	0.1	-4.1	-3.9	-3.0	-4.5
JUNGSCHWEINE (20-50 KG)														
YOUNG PIGS (20-50 KG)														JEUNES PORCS (20-50 KG)
1985	21000	::	1480	2671	5925	311	3555	3185	285	1905	13	2967	0:	2258
1986	21753	::	1540	2952	6059	285	4215	3417	302	1931	13	3049	0:	2221
1987	21504	26623	1584	2893	5876	281	4448	3451	295	1933	15	2906	672	2270
1988	21354	26115	1614	2846	5727	316	4123	3410	311	1932	13	2986	638	2198
% 88/87	-0.7	-1.9	1.9	-1.6	-2.5	12.6	-7.3	-1.2	5.5	0.0	-10.0	2.8	-5.1	-3.2
MASTSCHWEINE (>50 KG)														
PIGS FOR FATTENING (>50 KG)														PORCS A L'ENGRAIS (>50 KG)
1985	28709	::	1814	2586	8404	273	3787	3952	351	4659	20	4088	0:	2562
1986	30255	::	1991	2450	8651	328	5726	4464	345	4735	20	4656	0:	2617
1987	30174	37219	2050	2393	8477	313	6273	4454	335	4812	22	4803	771	2516
1988	29934	36777	2198	2403	8296	362	6118	4504	317	4784	21	4577	725	2472
% 88/87	-0.8	-1.2	7.2	0.4	-2.1	15.7	-2.5	1.1	-5.4	-0.6	-2.1	-4.7	-6.0	-1.7
MASTSCHWEINE (50-80 KG)														
PIGS FOR FATTENING (50-80 KG)														PORCS A L'ENGRAIS (50-80 KG)
1985	16853	::	1157	2029	5219	176	2131	2129	265	1467	12	2523	0:	1877
1986	17685	::	1227	1949	5310	192	3224	2553	265	1525	12	2821	0:	1870
1987	17718	21837	1286	1903	5243	206	3626	2557	259	1552	14	2876	494	1822
1988	17427	21311	1395	1912	4982	249	3427	2579	242	1548	13	2744	457	1764
% 88/87	-1.6	-2.4	8.4	0.5	-5.0	20.7	-5.5	0.9	-6.3	-0.3	-4.4	-4.6	-7.5	-3.2
MASTSCHWEINE (80-110 KG)														
PIGS FOR FATTENING (80-110 KG)														PORCS A L'ENGRAIS (80-110 KG)
1985	9322	::	638	541	2964	88	1457	1575	67	1384	7	1458	0:	600
1986	10101	::	743	487	3104	127	2201	1769	65	1340	7	1742	0:	658
1987	9873	12195	747	476	3029	99	2123	1687	64	1341	7	1809	199	613
1988	9935	12096	775	478	3104	99	1970	1723	66	1340	7	1695	191	649
% 88/87	0.6	-0.8	3.8	0.4	2.5	-0.1	-7.2	2.1	2.0	-0.1	-1.5	-6.3	-4.0	5.9
MASTSCHWEINE (>110 KG)														
PIGS FOR FATTENING (>110 KG)														PORCS A L'ENGRAIS (>110 KG)
1985	2534	::	19	16	221	9	199	248	19	1809	1	107	0:	85
1986	2468	::	21	14	237	9	300	142	16	1869	1	93	0:	89
1987	2584	3186	17	14	205	8	524	210	12	1919	1	118	78	81
1988	2572	3371	28	13	211	15	721	202	9	1897	1	138	77	59
% 88/87	-0.4	5.8	69.1	-7.1	2.9	83.1	37.5	-3.8	-24.6	-1.1	47.3	16.9	-1.3	-27.2

SCHWEINEBESTAND IN DEZEMBER

PIG POPULATION IN DECEMBER

EFFECTIFS PORCINS EN DECEMBRE

1000 STUECK

1000 TETES

	EUR 10	EUR 12	B	DK	D	GR	E	F	IRL	I	L	NL	P	UK
--	--------	--------	---	----	---	----	---	---	-----	---	---	----	---	----

ZUCHTEBER (>50 KG)

VERRATS REPRODUCTEURS (>50 KG)

BREEDING BOARS (>50 KG)														
1985	399	..	26	38	115	13	82	67	5	46	1	45	0:	45
1986	413	..	26	39	116	13	88	72	5	46	1	51	0:	45
1987	406	548	23	39	106	15	116	67	5	47	1	58	26	45
1988	399	523	21	35	108	15	102	61	5	47	1	67	22	41
% 88/87	-1.6	-4.6	-9.8	-10.3	1.5	-3.3	-12.5	-9.0	-4.1	-0.2	-15.5	15.5	-15.4	-8.9

ZUCHTSAUEN (>50 KG)

TRUIES D'ELEVAGE (>50 KG)

BREEDING SOWS (>50 KG)														
1985	9115	..	644	1029	2871	161	1716	1143	113	763	11	1469	0:	912
1986	9399	..	680	1057	2852	158	1771	1234	109	766	11	1625	0:	908
1987	8965	11299	677	993	2652	162	2013	1142	108	772	11	1546	321	901
1988	8570	10653	692	1009	2437	168	1782	1073	107	775	10	1470	301	829
% 88/87	-4.4	-5.7	2.3	1.6	-8.1	3.8	-11.5	-6.0	-0.4	0.3	-8.7	-4.9	-6.2	-8.0

GEDECKTE SAUEN

TRUIES SAILLIES

MATED SOWS														
1985	5944	..	431	642	1842	101	1087	709	77	572	8	922	0:	639
1986	6230	..	457	661	1867	100	1121	820	76	573	7	1030	0:	639
1987	5922	7374	461	624	1727	97	1256	730	76	575	8	984	196	640
1988	5694	7035	477	643	1588	102	1152	701	76	574	7	932	188	594
% 88/87	-3.8	-4.6	3.5	3.0	-8.1	5.1	-8.3	-4.0	-0.1	-0.1	-8.1	-5.3	-4.1	-7.2

DARUNTER: ZUM ERSTEN MAL GEDECKTE SAUEN

DONT: TRUIES SAILLIES POUR LA PREMIERE FOIS

OF WHICH: SOWS MATED FOR THE FIRST TIME														
1985	1251	..	102	140	382	24	211	153	15	141	2	191	0:	102
1986	1273	..	106	132	369	22	218	157	15	142	2	223	0:	106
1987	1180	1450	103	129	331	23	224	148	14	144	2	182	47	104
1988	1118	1334	101	132	285	30	173	132	14	142	6	185	43	91
% 88/87	-5.2	-8.1	-2.4	2.3	-13.9	30.4	-22.8	-10.8	-1.4	-0.9	277.6	1.6	-8.5	-12.5

NICHT GEDECKTE ZUCHTSAUEN

TRUIES NON SAILLIES

BREEDING SOWS NOT MATED														
1985	3171	..	213	387	1029	60	629	434	36	190	4	547	0:	272
1986	3169	..	223	396	985	58	649	414	33	193	4	595	0:	269
1987	3043	3925	216	369	925	65	757	412	32	198	3	562	125	261
1988	2877	3620	215	366	849	66	630	373	31	200	3	538	113	235
% 88/87	-5.4	-7.8	-0.4	-0.8	-8.3	2.0	-16.8	-9.5	-0.9	1.5	-9.9	-4.3	-9.6	-10.0

DARUNTER: NOCH NICHT GEDECKTE JUNGSAUEN

DONT: JEUNE TRUIES NON SAILLIES

OF WHICH: BREEDING GILTS NOT YET MATED														
1985	1063	..	84	127	304	9	147	151	10	81	1	212	0:	85
1986	1106	..	90	132	290	14	154	156	9	80	1	247	0:	86
1987	1026	1218	88	128	265	9	158	141	9	83	1	224	34	79
1988	962	1121	88	126	233	12	128	117	8	82	2	225	31	69
% 88/87	-6.2	-8.0	0.4	-1.6	-12.1	27.9	-19.3	-17.0	-1.2	-0.7	127.3	0.4	-8.8	-12.7

GROSS INDIGENOUS PRODUCTION OF PIGS

eurostat
9.3.1989

PRODUCTION INDIGENE BRUTE DE PORCS

1000 HEAD

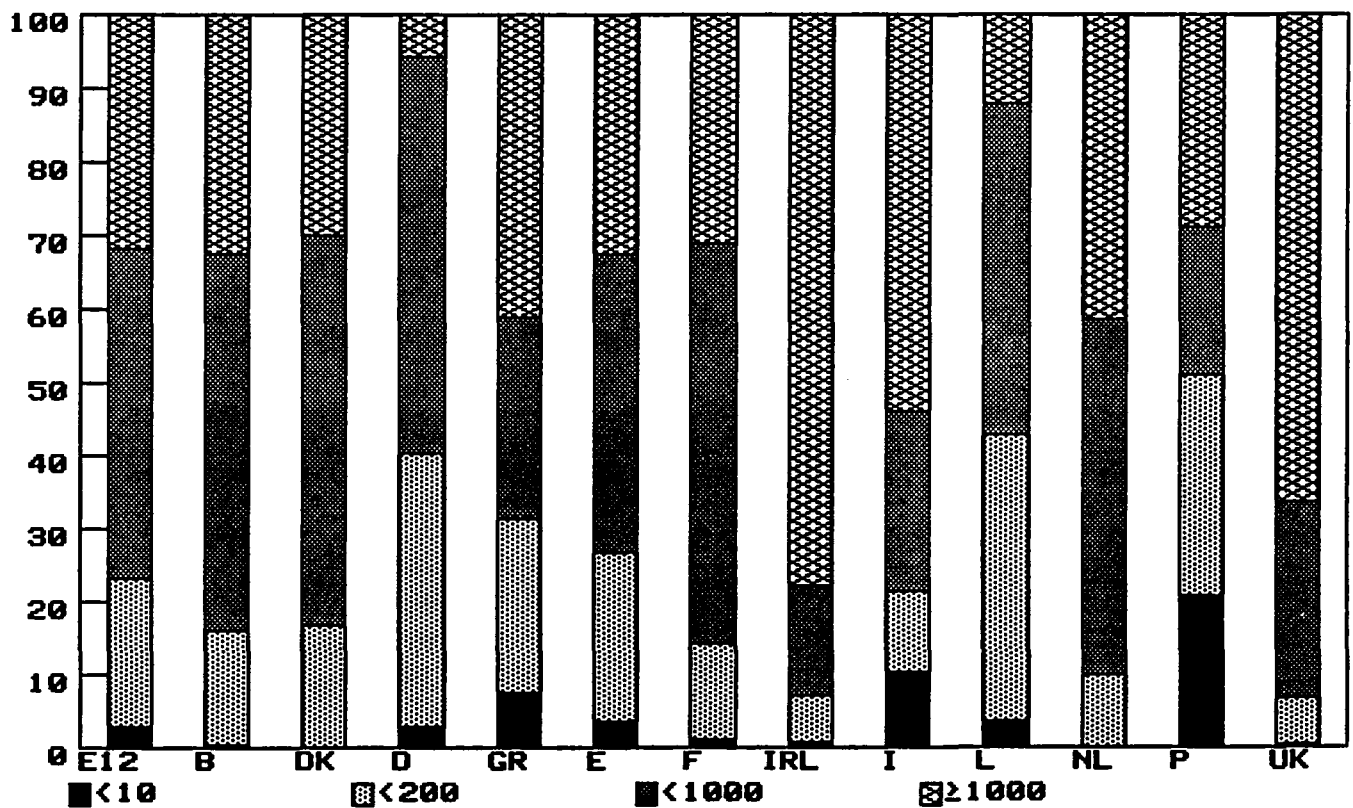
1000 TETES

	EUR 10	EUR 12	B	DK	D	GR	E	F	IRL	I	L	NL	P	UK
12 MONTHS														
1986/87	136120*	158209*	8068	16038	40027	2344*	18912	19329	2131	9707*	135	22692	3177	15650
1987/88	137943*	163131*	8437*	16206*	38501*	2372*	21974*	20340*	2131*	9825*	135*	24107*	3214	15889*
1988/89	133615*	157755*	8612*	16273*	36400*	2429*	21025*	19300*	2135*	9820*	135*	23500*	3115*	15011*
% 88/87	1.3*	3.1*	4.6*	1.0*	-3.8*	1.2*	16.2*	5.2*	0.0*	1.2*	0.3*	6.2*	1.2	1.5*
% 89/88	-3.1*	-3.3*	2.1*	0.4*	-5.5*	2.4*	-4.3*	-5.1*	0.2*	-0.1*	0.0*	-2.5*	-3.1*	-5.5*
DECEMBER/JANUARY														
1986/87	24187	28326	1377	2749	7243	595	3634	3369	362	2211	24	3567	505	2691
1987/88	24048*	28499*	1411	2775	6480*	607*	3896*	3401*	348*	2240*	24*	3993*	555	2770
1988/89	24389*	29074*	1453*	2772*	6550*	606*	4140*	3600*	335*	2235*	24*	4180*	545*	2634*
% 88/87	-0.6*	0.6*	2.5	0.9	-10.5*	2.0*	7.2*	1.0*	-3.9*	1.3*	0.0*	11.9*	9.9	2.9
% 89/88	1.4*	2.0*	3.0*	-0.1*	1.1*	-0.1*	6.3*	5.9*	-3.7*	-0.2*	0.0*	4.7*	-1.8*	-4.9*
FEBRUARY/MARCH														
1987	22161	25783	1267	2634	6612	356	3136	3233	349	1577	24	3683	486	2427
1988	23075*	27245*	1348*	2728	6460*	361*	3662*	3458*	360*	1610*	24*	4288*	508	2438*
1989	22207*	26167*	1388*	2654*	6050*	364*	3460*	3500*	370*	1605*	24*	3920*	500*	2332*
% 88/87	4.1*	5.7*	6.4*	3.6	-2.3*	1.4*	16.8*	7.0*	3.2*	2.1*	1.8*	16.4*	4.5	0.5*
% 89/88	-3.8*	-4.0*	3.0*	-2.7*	-6.3*	0.8*	-5.5*	1.2*	2.8*	-0.3*	0.0*	-8.6*	-1.6*	-4.3*
APRIL/MAY														
1987	21574	25027	1316	2477	6348	276	2951	3036	350	1477	23	3653	502	2618
1988	22319*	26539*	1441*	2489	6420*	295*	3671*	3302*	337*	1485*	23*	3871*	549	2656*
1989	21692*	25617*	1430*	2585*	6100*	301*	3405*	3100*	350*	1480*	23*	3820*	520*	2503*
% 88/87	3.5*	6.0*	9.5*	0.5	1.1*	6.8*	24.4*	8.8*	-3.7*	0.5*	0.0*	6.0*	9.4	1.5*
% 89/88	-2.8*	-3.5*	-0.8*	3.9*	-5.0*	2.0*	-7.2*	-6.1*	3.9*	-0.3*	0.0*	-1.3*	-5.3*	-5.8*
JUNE/JULY														
1987	22732	26217	1374	2705	6619	324	2911	3218	366	1399	22	4042	574	2663
1988	21914*	25945*	1281*	2608	6100*	337*	3504*	3231*	350*	1420*	22*	3832*	527	2733*
1989	21527*	25247*	1442*	2628*	5950*	352*	3210*	3050*	350*	1420*	22*	3760*	510*	2553*
% 88/87	-3.6*	-1.0*	-6.8*	-3.6	-7.8*	4.1*	20.4*	0.4*	-4.4*	1.5*	0.0*	-5.2*	-8.2	2.6*
% 89/88	-1.8*	-2.7*	12.6*	0.8*	-2.5*	4.4*	-8.4*	-5.6*	0.0*	0.0*	0.0*	-1.9*	-3.2*	-6.6*
AUGUST/SEPTEMBER														
1987	22155	25607	1348	2766	6386	369	2902	3195	342	1400	20	3920	550	2410
1988	23037*	27158*	1515*	2854*	6417*	358*	3576*	3531*	372*	1410*	20*	4118*	545	2442*
1989	21287*	25047*	1415*	2789*	5700*	375*	3230*	3050*	370*	1415*	20*	3870*	530*	2283*
% 88/87	4.0*	6.1*	12.4*	3.2*	0.5*	-2.7*	23.2*	10.5*	8.8*	0.7*	0.0*	5.1*	-0.9	1.3*
% 89/88	-7.6*	-7.8*	-6.6*	-2.3*	-11.2*	4.5*	-9.7*	-13.6*	-0.5*	0.4*	0.0*	-6.0*	-2.8*	-6.5*
OCTOBER/NOVEMBER														
1987	23311*	27249*	1386	2707	6819	424*	3378	3280	362	1643*	22	3827	560	2841
1988	23549*	27744*	1441*	2752*	6624*	414*	3665*	3417*	364*	1660*	22*	4005*	530	2850*
1989	22513*	26603*	1484*	2845*	6050*	431*	3580*	3000*	360*	1665*	22*	3950*	510*	2706*
% 88/87	1.0*	1.8*	4.0*	1.7*	-2.9*	-2.5*	8.5*	4.2*	0.6*	1.0*	0.0*	4.7*	-5.4	0.3*
% 89/88	-4.4*	-4.1*	3.0*	3.4*	-8.7*	4.3*	-2.3*	-12.2*	-1.1*	0.3*	0.0*	-1.4*	-3.8*	-5.1*

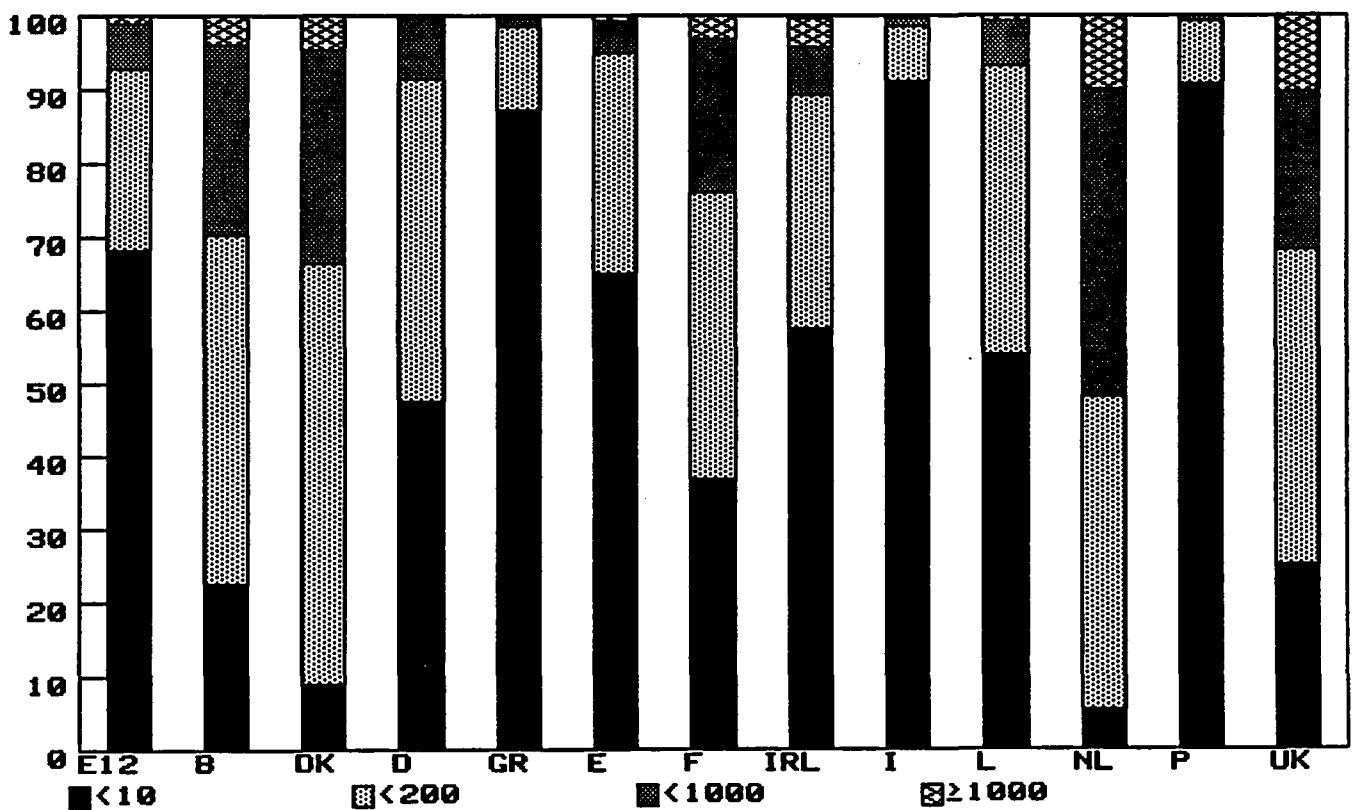
Struktur der Schweinehaltungen 1987 - Tiere in %

Structure of pig holdings 1987 - Animals in %

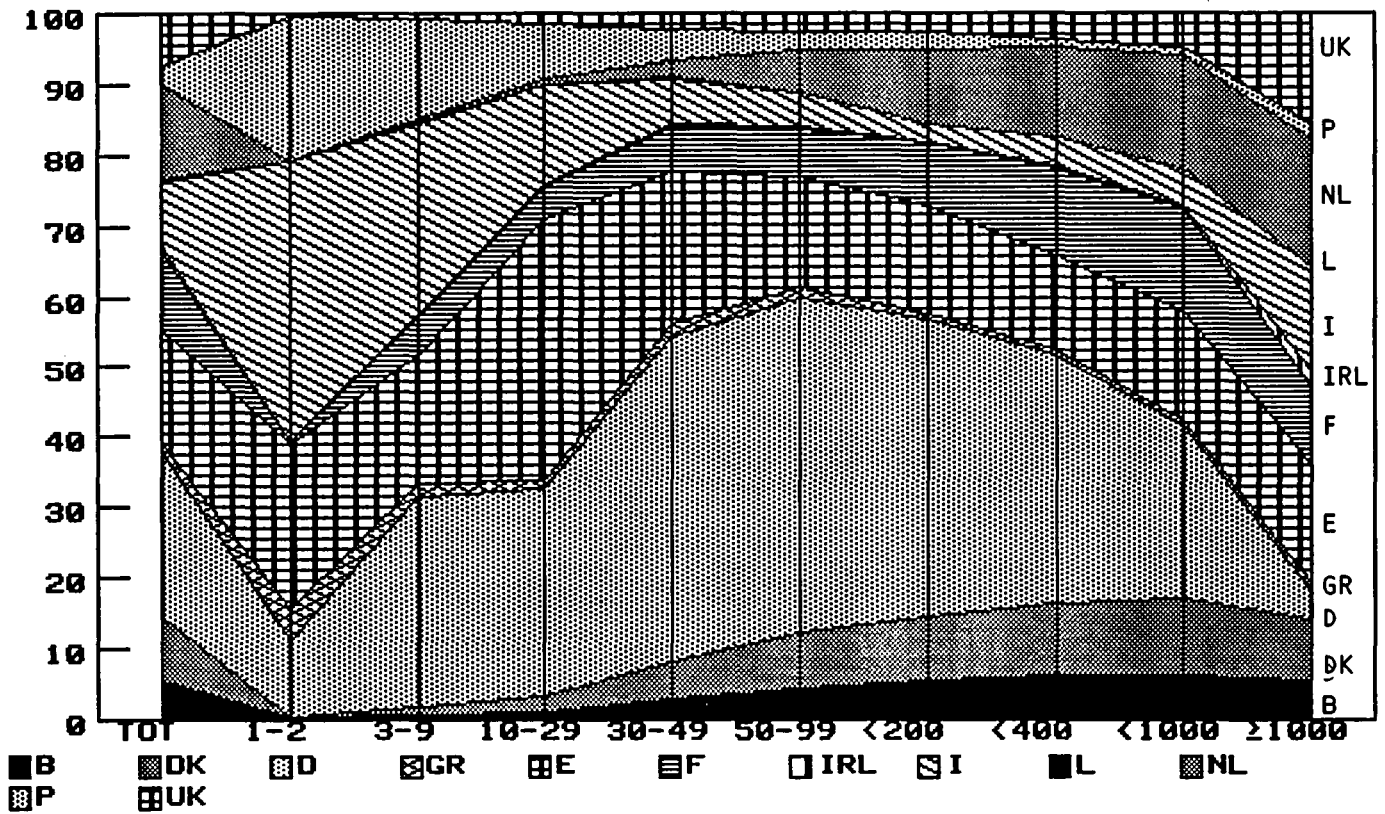
Structure des élevages de porcs 1987 - Animaux in %



Halter in % - Holdings in % - Détenteurs en %



Struktur der Schweinehaltungen 1987 - Tiere in %
 Structure of pig holdings 1987 - Animals in %
 Structure des élevages de porcs 1987 - Animaux in %



Halter in % - Holdings in % - Détenteurs en %

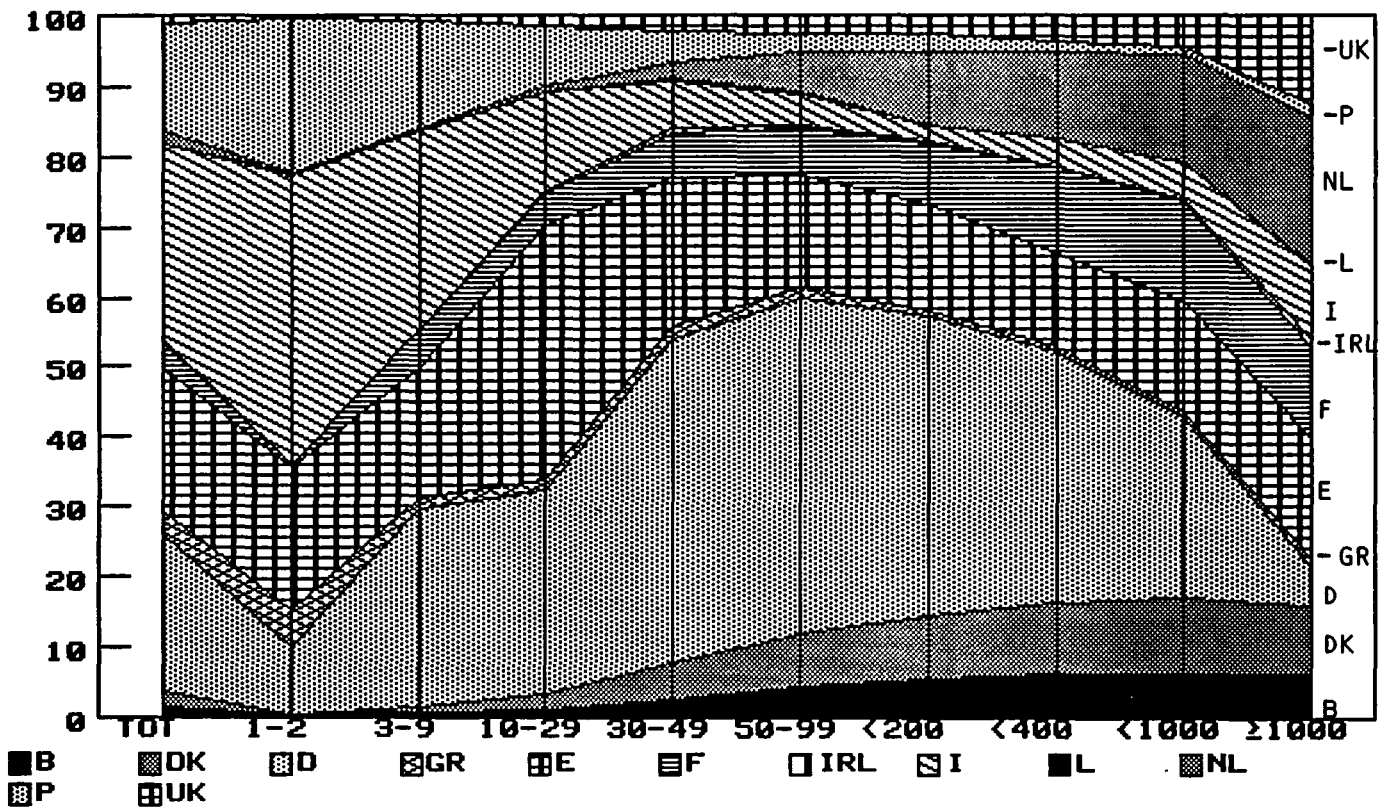


Schaubild 5: Struktur nach Größenklassen 1983, 1985, 1987

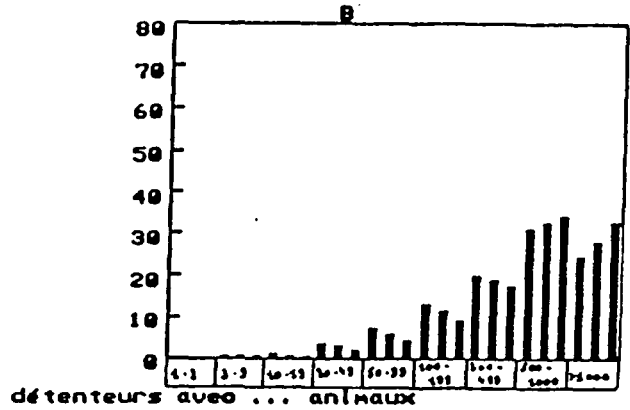
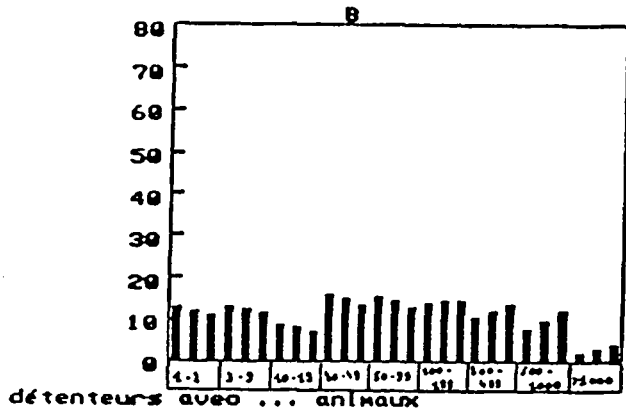
Figure 5: Structure according to size classes 1983, 1985, 1987

Graphique 5: Structure par classe de grandeur 1983, 1985, 1987

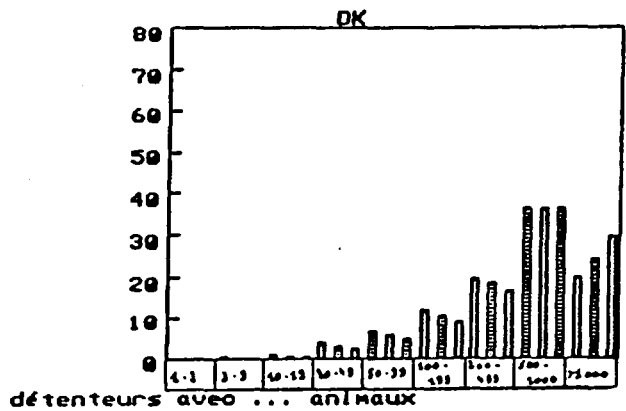
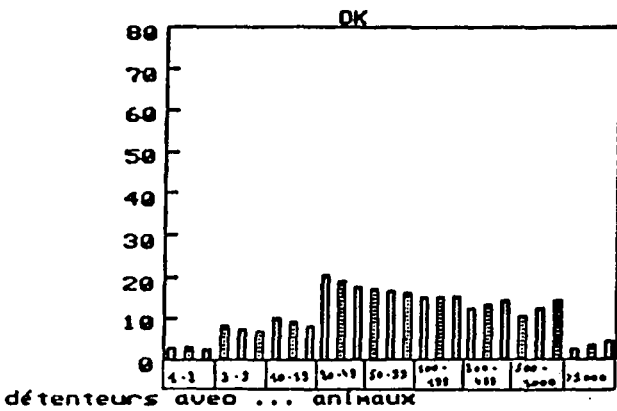
Anzahl Halter
Number of Holdings
Nombre de détenteurs

Anzahl Tiere
Number of animals
Nombre d'animaux

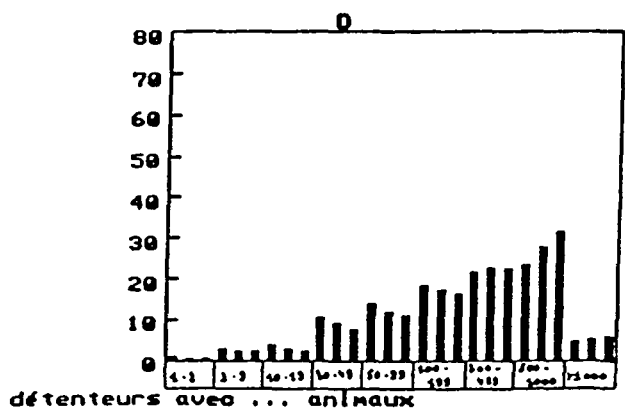
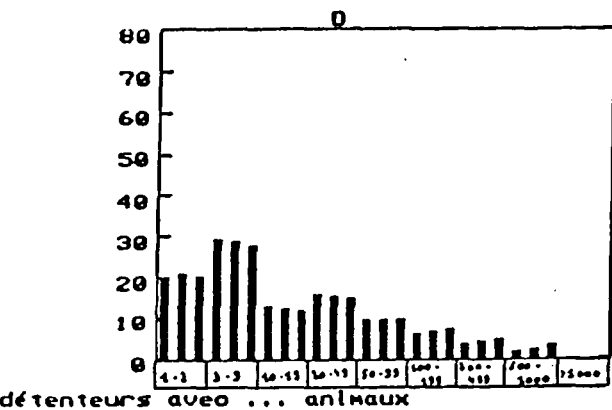
Nr. 5-1



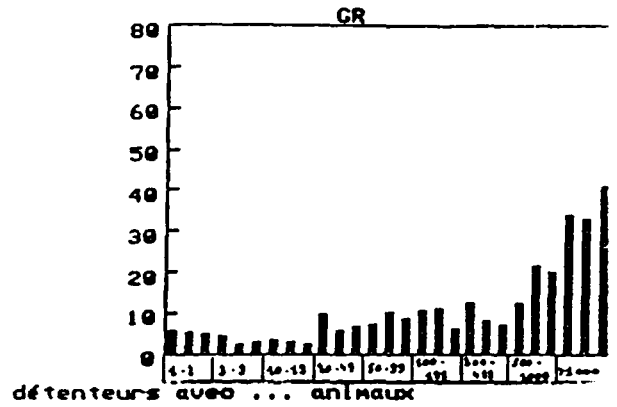
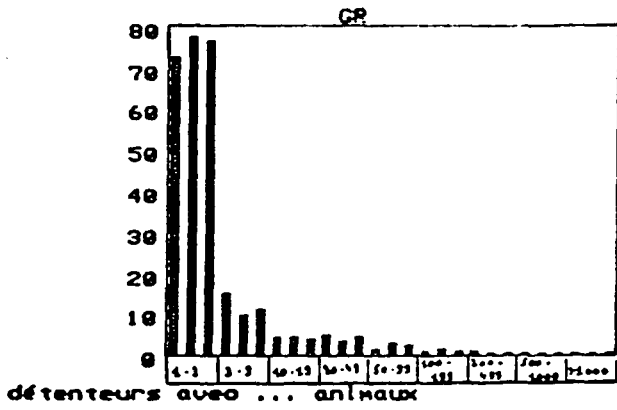
Nr. 5-2



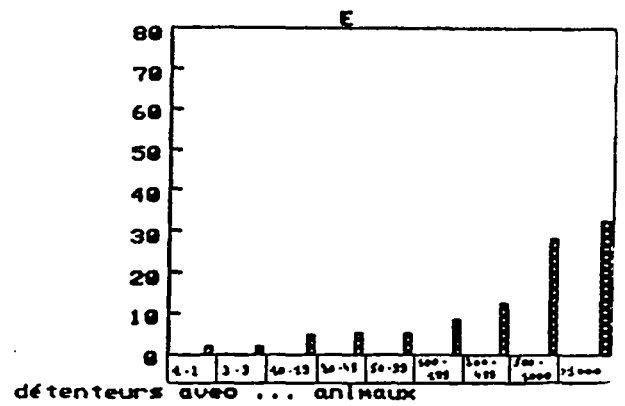
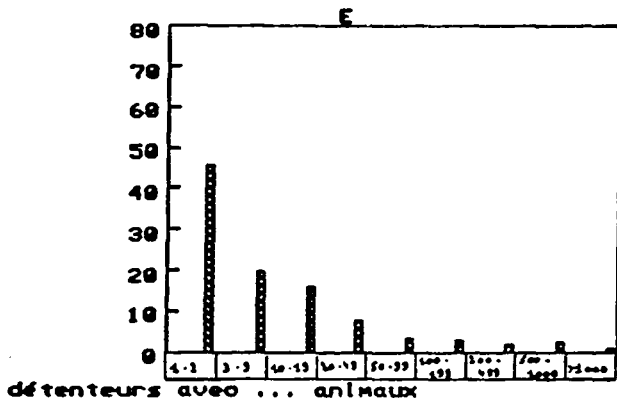
Nr. 5-3



Nr. 5-4

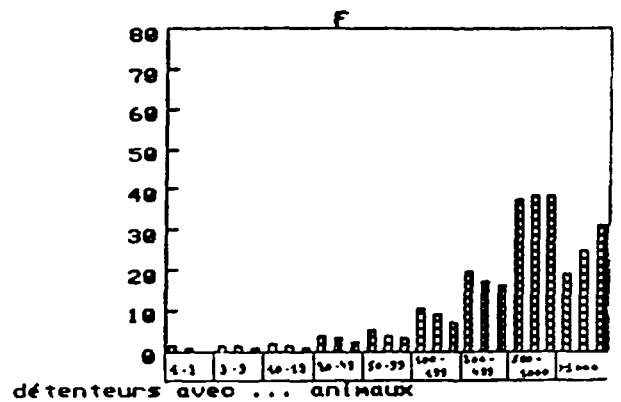
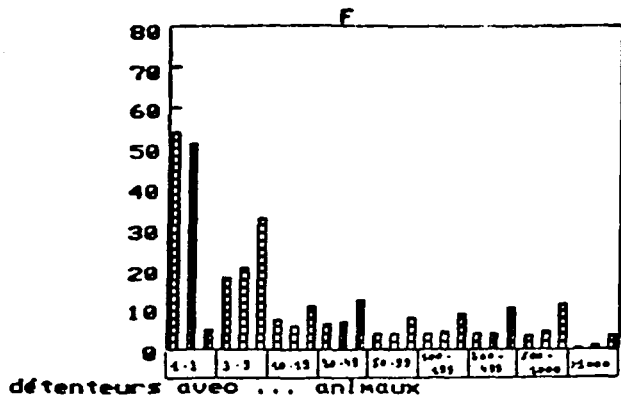


Nr. 5-5

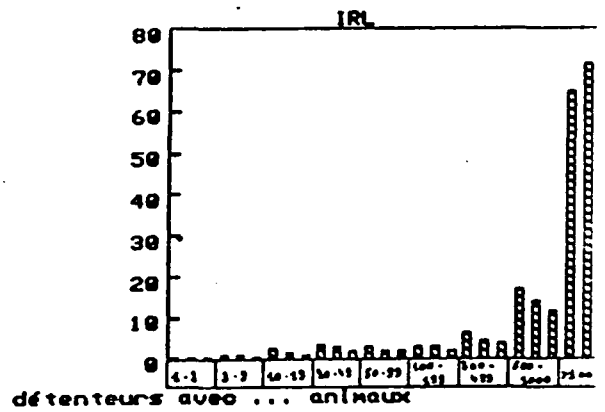
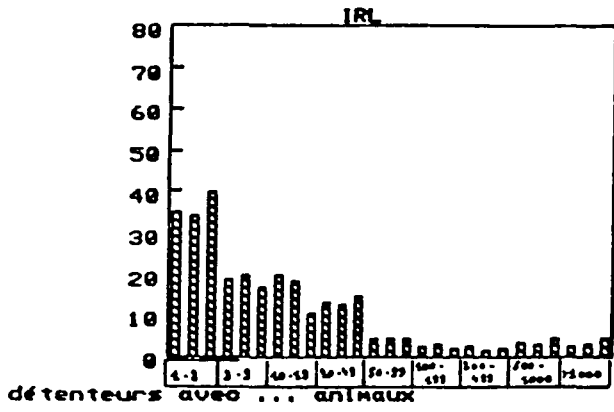


Nr. 5-6

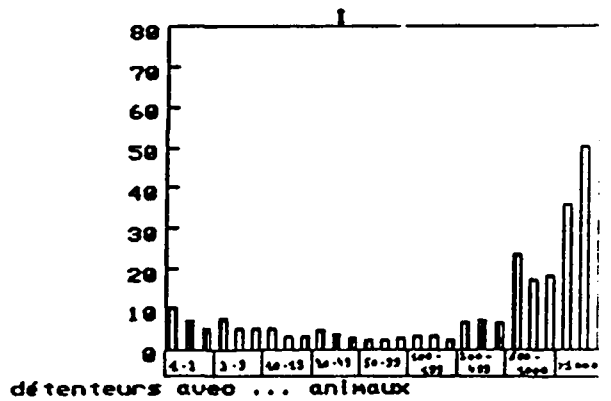
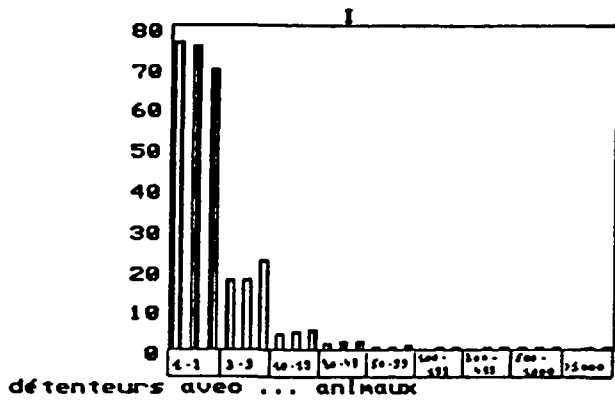
Structure des élevages de porcs



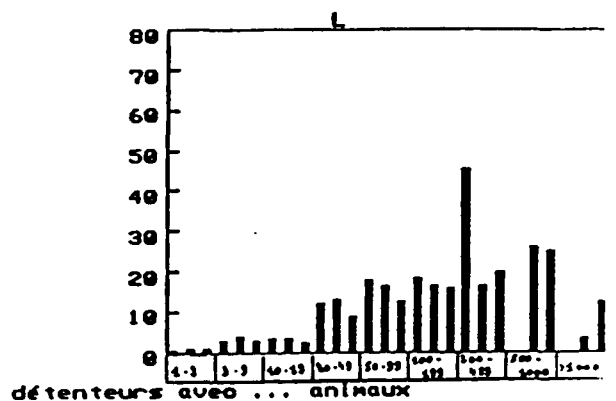
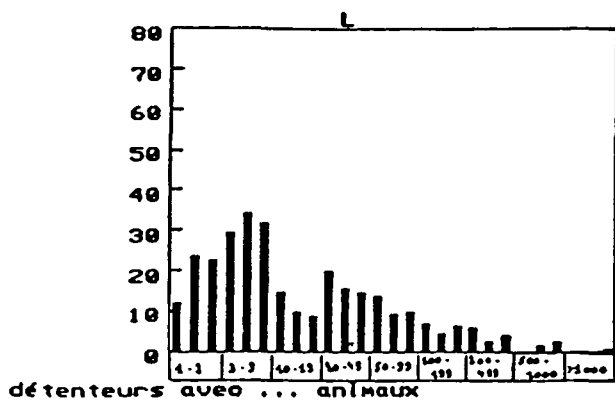
Nr. 5-7



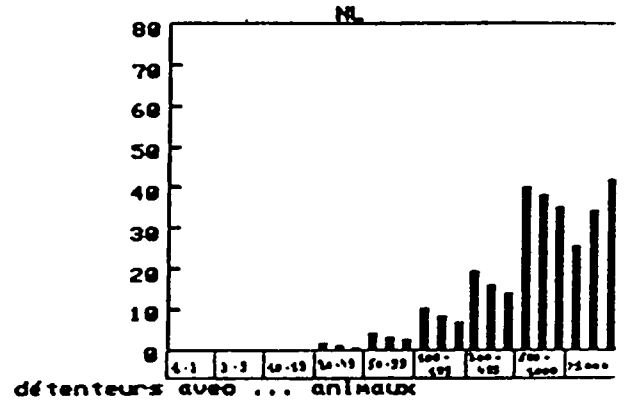
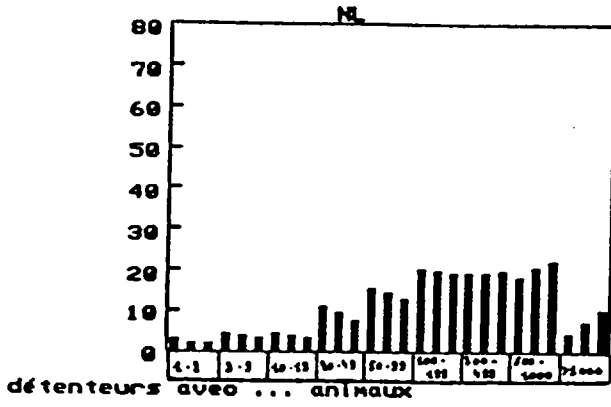
Nr. 5-8



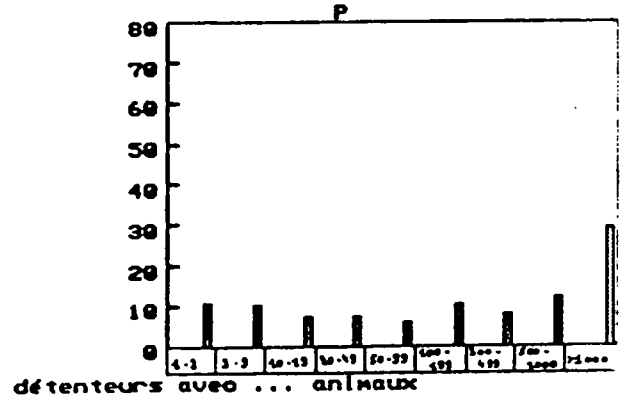
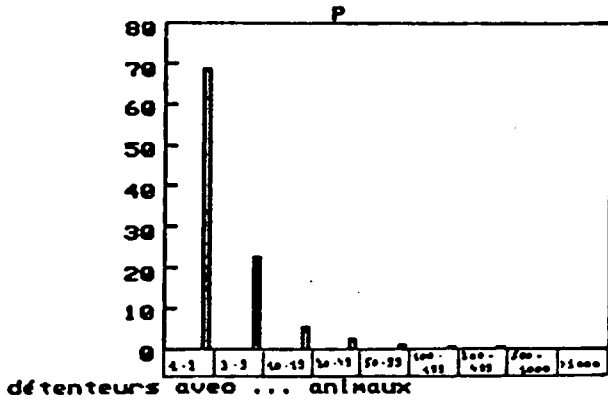
Nr. 5-9



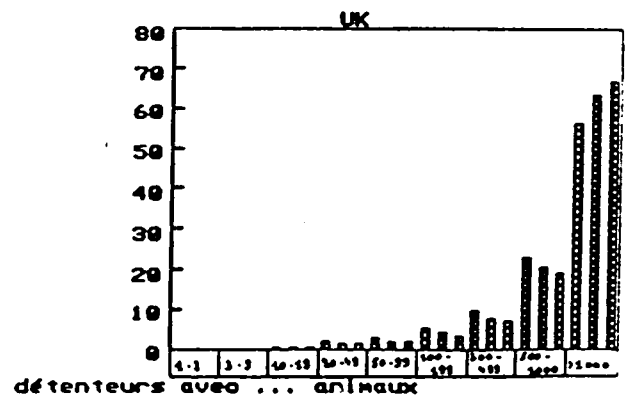
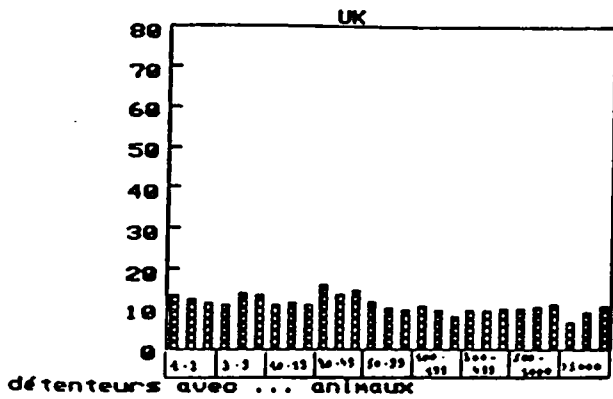
Nr. 5-10



Nr. 5-11



Nr. 5-12



STRUCTURE OF PIG HOLDINGS

16.03.89

STRUCTURE DES ELEVAGES DE PORCS

NUMBER OF HOLDERS (1000)

NOMBRE DE DETENTEURS (1000)

	I EUR 12	I EUR 10	I B	I DK	I D	I GR	I E	I F	I IRL	I I	I L	I NL	I P	I UK	I I																
TOTAL HOLDERS																ENSEMBLE DES DETENTEURS															
1983	:	1862,3	35,0	51,6	469,5	73,2	:	209,8	9,2	946,7	1,4	37,6	:	28,4	:																
1985	:	1395,9	30,0	44,2	432,4	56,5	:	165,6	7,1	598,5	1,9	36,1	:	23,6	:																
1987	:	1128,2	26,5	37,7	392,4	55,7	:	361,8	66,6	487,1	1,4	35,4	262,8	28,7	:																
X 87/85	:	-19,2	-11,6	-14,8	-9,3	-1,5	:	-59,8	-32,4	-18,6	-23,2	-2,0	:	-12,4	:																
HOLDERS WITH 1-2 ANIMALS																DETENTEURS AVEC 1-2 ANIMAUX															
1983	:	989,3	4,6	1,6	94,4	52,9	:	112,1	3,2	715,6	0,2	1,0	:	3,8	:																
1985	:	473,9	3,6	1,3	89,2	43,6	:	83,7	2,4	446,0	0,4	0,8	:	2,9	:																
1987	:	469,6	2,9	0,9	78,8	42,5	:	163,9	3,1	336,0	0,3	0,7	179,5	2,4	:																
X 87/85	:	-30,3	-19,5	-29,7	-11,6	-2,5	:	-96,3	-20,8	-24,7	-26,6	-4,8	:	-18,2	:																
HOLDERS WITH 3-9 ANIMALS																DETENTEURS AVEC 3-9 ANIMAUX															
1983	:	366,1	4,5	4,3	137,9	10,7	:	37,3	1,7	164,5	0,4	1,6	:	3,1	:																
1985	:	280,6	3,7	3,2	124,5	5,5	:	33,1	1,4	104,1	0,6	1,4	:	3,3	:																
1987	:	254,4	3,1	2,5	108,2	6,0	:	70,9	21,5	108,0	0,5	1,2	58,7	2,7	:																
X 87/85	:	-9,3	-16,4	-22,4	-13,0	9,5	:	-35,0	-42,9	3,8	-29,0	-14,7	:	-16,0	:																
HOLDERS WITH 10-19 ANIMALS																DETENTEURS AVEC 10-19 ANIMAUX															
1983	:	132,6	2,9	5,2	61,7	3,0	:	14,7	1,8	38,2	0,2	1,6	:	3,2	:																
1985	:	101,8	2,5	4,1	53,1	2,3	:	9,6	1,3	24,7	0,2	1,3	:	2,7	:																
1987	:	86,8	2,0	3,1	46,3	2,0	:	58,0	7,0	0,5	22,4	0,1	1,1	13,4	2,3																
X 87/85	:	-14,7	-20,9	-23,9	-12,7	-12,0	:	-27,1	-61,5	-9,5	-29,6	-15,7	:	-16,9	:																
HOLDERS WITH 20-49 ANIMALS																DETENTEURS AVEC 20-49 ANIMAUX															
1983	:	133,2	5,6	10,6	75,0	3,6	:	13,3	1,2	15,0	0,3	4,1	:	4,6	:																
1985	:	111,5	4,5	8,5	65,8	1,9	:	11,3	0,9	11,8	0,3	3,4	:	3,2	:																
1987	:	95,1	3,6	6,6	59,1	2,3	:	27,4	8,1	0,7	8,8	0,2	2,7	5,8	3,0																
X 87/85	:	-14,7	-21,3	-22,5	-10,2	21,0	:	-28,3	-22,2	-24,9	-27,7	-19,3	:	-5,2	:																
HOLDERS WITH 50-99 ANIMALS																DETENTEURS AVEC 50-99 ANIMAUX															
1983	:	80,5	5,3	8,9	43,9	1,2	:	8,2	0,4	3,3	0,2	5,8	:	3,2	:																
1985	:	71,3	4,3	7,5	40,5	1,5	:	6,2	0,3	3,3	0,2	5,2	:	2,4	:																
1987	:	64,7	3,4	6,1	38,0	1,5	:	12,7	5,2	0,2	3,7	0,1	4,6	2,1	2,0																
X 87/85	:	-9,2	-19,7	-18,5	-6,2	-6,0	:	-16,1	-33,3	12,1	-18,3	-11,6	:	-15,7	:																
HOLDERS WITH 100-199 ANIMALS																DETENTEURS AVEC 100-199 ANIMAUX															
1983	:	64,2	4,9	7,9	29,4	0,9	:	8,3	0,2	2,1	0,1	7,5	:	3,0	:																
1985	:	59,2	4,3	6,8	28,7	0,9	:	6,8	0,2	2,1	0,1	7,0	:	2,3	:																
1987	:	54,3	3,8	5,8	28,2	0,5	:	10,2	5,7	0,1	1,5	0,1	6,7	1,8	1,7																
X 87/85	:	-8,3	-11,3	-14,3	-1,6	-40,7	:	-16,2	-50,0	-27,3	7,1	-4,1	:	-24,8	:																
HOLDERS WITH 200-399 ANIMALS																DETENTEURS AVEC 200-399 ANIMAUX															
1983	:	48,0	3,7	6,4	17,4	0,5	:	7,6	0,2	2,1	0,1	7,2	:	2,7	:																
1985	:	46,7	3,5	6,0	18,7	0,3	:	6,5	0,1	2,2	0,0	7,0	:	2,2	:																
1987	:	46,9	3,6	5,5	19,7	0,3	:	7,5	6,6	0,1	2,1	0,1	6,9	0,7	2,1																
X 87/85	:	0,4	1,4	-8,8	5,0	-0,3	:	1,5	-	-5,3	35,7	-1,3	:	-7,1	:																
HOLDERS WITH 400-999 ANIMALS																DETENTEURS AVEC 400-999 ANIMAUX															
1983	:	38,5	2,3	5,5	9,1	0,2	:	6,9	0,3	4,0	0	6,9	:	2,8	:																
1985	:	39,4	2,3	5,4	11,2	0,4	:	6,9	0,2	2,5	0,0	7,5	:	2,5	:																
1987	:	42,4	3,2	5,5	13,1	0,3	:	8,1	7,2	0,2	2,6	0,0	7,8	0,5	2,3																
X 87/85	:	7,5	11,3	0,7	17,3	-2,0	:	4,3	-	6,8	6,7	5,0	:	-7,3	:																
HOLDERS WITH 1000 ANIMALS AND MORE																DETENTEURS AVEC 1000 ANIMAUX ET PLUS															
1983	:	9,9	0,7	1,2	0,7	0,2	:	1,3	0,2	1,9	0	1,7	:	2,0	:																
1985	:	11,5	0,8	1,4	0,9	0,1	:	1,6	0,2	1,8	0,0	2,6	:	2,1	:																
1987	:	13,8	1,0	1,7	0,9	0,2	:	2,9	2,2	0,2	1,8	0,0	3,6	0,3	2,2																
X 87/85	:	20,2	30,7	22,3	7,0	35,0	:	37,5	-	2,1	300,0	37,4	:	1,7	:																

STRUCTURE OF PIG HOLDINGS
NUMBER OF ANIMALS (1000)

16.03.89

STRUCTURE DES ELEVAGES DE PORCS
NOMBRE D'ANIMAUX (1000)

	I EUR 12	I EUR 10	I B	I DK	I D	I GR	I E	I F	I IRL	I I	I L	I NL	I P	I UK	I I
ENSEMBLE DES DETENEURS															
TOTAL HOLDERS															
1983	78264,5	5314,1	9253,1	22446,4	1168,0	11250,9	1053,4	9187,4	72,0	10656,1		7863,3			
1985	80615,6	5364,8	9089,0	23563,0	1095,1	10956,3	994,1	9169,1	71,8	12382,6		7929,9			
1987	85121,1	5861,5	9266,4	24469,7	1138,0	17227,8	11702,3	960,3	9383,0	76,8	14348,7	2456,0	7914,5		
X 87/85	5,6	9,3	2,0	3,8	3,9	6,8	-3,4	2,3	6,9	15,9		-0,2			
DETENEURS AVEC 1-2 ANIMAUX															
HOLDERS WITH 1-2 ANIMALS															
1983	1406,5	7,7	2,5	162,2	66,2	171,3	4,9	984,0	0,3	1,6		5,8			
1985	1018,5	6,0	2,1	153,0	55,5	127,8	3,5	663,9	0,8	1,3		4,6			
1987	709,0	4,8	1,4	135,9	55,3	294,4	5,1	498,3	0,6	1,2	259,1	3,6			
X 87/85	-30,4	-20,3	-31,8	-11,2	-0,4	-96,0	-20,0	-24,9	-26,0	-3,2		-22,1			
DETENEURS AVEC 3-9 ANIMAUX															
HOLDERS WITH 3-9 ANIMALS															
1983	1717,6	22,9	25,4	689,5	48,2	173,9	8,7	720,8	2,0	8,8		17,4			
1985	1331,3	18,2	19,1	616,1	27,8	149,2	7,2	465,4	2,9	7,4		17,9			
1987	1200,5	15,3	14,9	533,8	30,0	323,8	101,9	4,3	477,1	2,1	6,2	252,1	15,0		
X 87/85	-9,8	-15,6	-22,1	-13,4	7,9	-31,7	-40,3	2,5	-28,3	-16,8		-16,5			
DETENEURS AVEC 10-19 ANIMAUX															
HOLDERS WITH 10-19 ANIMALS															
1983	1788,6	41,4	73,3	849,0	40,1	202,2	23,3	491,3	2,3	23,2		42,6			
1985	1375,8	34,7	57,3	728,3	33,0	132,9	16,6	313,4	2,5	19,0		38,1			
1987	1187,1	27,4	43,3	635,8	28,4	804,1	96,9	7,0	300,4	1,8	16,0	173,1	30,2		
X 87/85	-13,7	-21,1	-24,3	-12,7	-13,9	-27,1	-57,8	-4,1	-28,7	-16,1		-20,8			
DETENEURS AVEC 20-49 ANIMAUX															
HOLDERS WITH 20-49 ANIMALS															
1983	4213,8	182,3	348,1	2376,8	112,4	419,4	35,1	448,3	8,6	138,8		143,8			
1985	3533,8	148,2	281,0	2087,7	62,6	363,6	27,2	337,9	9,3	114,4		99,9			
1987	3022,5	117,6	217,1	1880,1	73,9	874,2	258,5	20,4	258,2	6,7	93,0	176,1	97,1		
X 87/85	-14,5	-20,6	-22,8	-10,0	18,0	-28,9	-25,0	-23,6	-28,6	-18,7		-2,8			
DETENEURS AVEC 50-99 ANIMAUX															
HOLDERS WITH 50-99 ANIMALS															
1983	5679,7	377,7	633,8	3084,0	83,1	578,7	28,1	223,0	12,7	426,2		231,6			
1985	5057,7	303,1	534,3	2855,5	109,4	443,2	19,6	232,9	11,8	378,3		169,7			
1987	4606,7	244,7	436,0	2682,9	97,9	874,7	378,4	16,4	266,5	9,5	335,8	145,3	138,6		
X 87/85	-8,9	-19,3	-18,4	-6,0	-10,5	-14,6	-16,3	14,4	-19,6	-11,2		-18,3			
DETENEURS AVEC 100-199 ANIMAUX															
HOLDERS WITH 100-199 ANIMALS															
1983	9068,2	688,0	1117,6	4134,2	124,7	1168,0	32,7	289,3	13,0	1075,7		425,1			
1985	8363,0	607,3	964,8	4024,2	118,9	975,2	27,0	302,7	11,8	1003,5		327,6			
1987	7702,5	540,2	832,7	3963,6	72,3	1450,8	828,6	16,3	218,2	12,3	969,5	246,3	248,8		
X 87/85	-7,9	-11,0	-13,7	-1,5	-39,1	-15,0	-39,6	-27,9	4,1	-3,4		-24,0			
DETENEURS AVEC 200-399 ANIMAUX															
HOLDERS WITH 200-399 ANIMALS															
1983	13603,1	1039,2	1826,5	4884,9	148,0	2188,7	65,4	687,4	32,5	2045,0		765,5			
1985	13256,4	993,7	1705,6	5278,2	89,5	1866,4	42,7	662,3	11,5	1979,9		626,6			
1987	13370,8	1015,2	1566,0	5545,9	84,2	2134,9	1927,5	35,8	622,0	15,1	1971,6	193,3	587,5		
X 87/85	0,9	2,2	-8,2	5,1	-5,9	3,3	-16,2	-6,1	31,0	-0,4		-6,2			
DETENEURS AVEC 400-999 ANIMAUX															
HOLDERS WITH 400-999 ANIMALS															
1983	23001,8	1655,1	3370,1	5241,3	146,6	4211,7	175,2	2137,4	5	4254,7		1809,7			
1985	24083,4	1752,9	3323,4	6524,6	236,3	4188,7	140,0	1581,6	18,7	4687,6		1629,7			
1987	26157,3	1991,3	3383,9	7718,5	224,7	4860,3	4482,2	109,5	1692,5	19,3	5005,7	295,9	1527,8		
X 87/85	8,6	13,6	1,8	18,3	-4,0	7,0	-21,8	7,0	3,2	6,8		-6,3			
DETENEURS AVEC 1000 ANIMAUX ET PLUS															
HOLDERS WITH 1000 ANIMALS AND MORE															
1983	17784,9	1299,8	1855,8	1023,0	398,6	2137,1	680,0	3285,9	5	2682,2		4421,8			
1985	22595,2	1500,2	2201,5	1293,4	362,2	2709,1	710,4	4609,0	2,4	4191,2		5015,8			
1987	27144,6	1905,0	2771,1	1373,3	469,1	5610,7	3623,2	747,7	5049,8	9,5	5949,9	714,6	5266,0		
X 87/85	20,2	27,0	25,9	6,2	29,5	33,7	5,3	9,6	292,5	42,0		5,0			

