

Unemployment

8/9 □ 1996 Monthly

6 September 1996

UNEMPLOYMENT IN THE EUROPEAN UNION

June and July 1996

Eurostat estimates that the seasonally-adjusted unemployment rate in the European Union (fifteen Member States) for the months of June and July 1996 was 10.7%, representing a decrease of 0.1% by comparison with the two previous months. The European unemployment rate peaked at 10.9% in March 1996, but is now at the same level as one year ago.

Unemployment has been falling steadily for a number of years in several Member States including Denmark (from 10.6% in June 1993 to 6.3% in July 1996), Spain (from 24.5% in May 1994 to 21.3% in July 1996), the United Kingdom (from 10.7% in January 1993 to 8.3% in July 1996) and Finland (from 19.6% in March 1994 to 16.3% in July 1996). In recent months it has been falling also in Belgium, the Netherlands and Portugal.

On the other hand, the current rates are noticeably higher than one year ago in Germany (8.9% in July 1996 compared with 8.1% in May 1995) and France (11.7% in July 1996 compared with 11.2% in July 1995).

The unemployment rate for persons aged between 15 and 24 years in the European Union has been falling since the beginning of 1994 and is now below 21%, so that one young person is unemployed for every four who have a job. But since more than half of young people aged between 15 and 24 are still studying, it may be considered that in fact one young person in ten is unemployed.



OFICINA ESTADÍSTICA DE LAS COMUNIDADES EUROPEAS
DE EUROPÆISKE FÆLLESSKABERS STATISTISKE KONTOR
STATISTISCHES AMT DER EUROPÄISCHEN GEMEINSCHAFTEN
ΣΤΑΤΙΣΤΙΚΗ ΥΠΗΡΕΣΙΑ ΤΩΝ ΕΥΡΩΠΑΪΚΩΝ ΚΟΙΝΟΤΗΤΩΝ
STATISTICAL OFFICE OF THE EUROPEAN COMMUNITIES
OFFICE STATISTIQUE DES COMMUNAUTÉS EUROPÉENNES
ISTITUTO STATISTICO DELLE COMUNITÀ EUROPEE
BUREAU VOOR DE STATISTIEK DER EUROPESE GEMEENSCHAPPEN
SERVIÇO DE ESTATÍSTICA DAS COMUNIDADES EUROPEIAS

L-2920 Luxembourg — Tél. 43 01-1 — Télex COMEUR LU 3423
B-1049 Bruxelles, rue de la Loi 200 — Tél. 299 11 11

This report has been produced by the *Population, migration, employment and unemployment* unit at Eurostat. The data presented are in line with the definitions and recommendations of the International Labour Office (*Current International Recommendations on Labour Statistics*, 1988 edition, ILO Geneva). The figures have been estimated by Eurostat on the basis of the European Labour Force Survey and are presented for individual Member States of the European Union in order to facilitate international comparisons.

These figures may therefore differ from those generally used in the Member States, which usually reflect national legislation and administrative procedures, and which for this reason are less comparable between Member States.

For further information : A. Persenaire tel. Lux.4301-32005
R. Brandenbourger tel. Lux.4301-33272

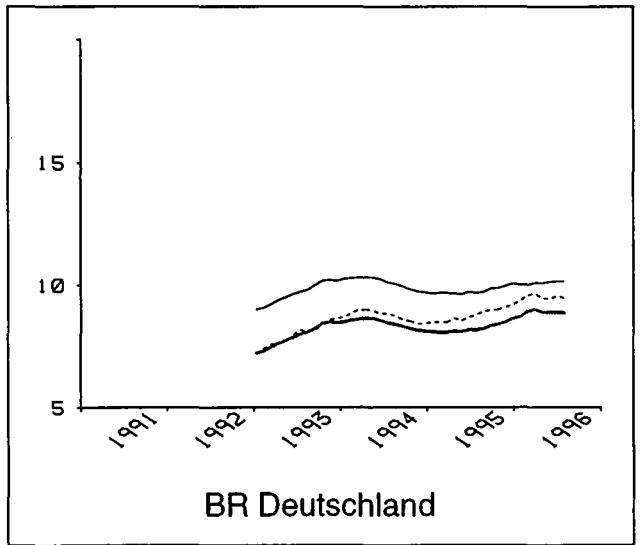
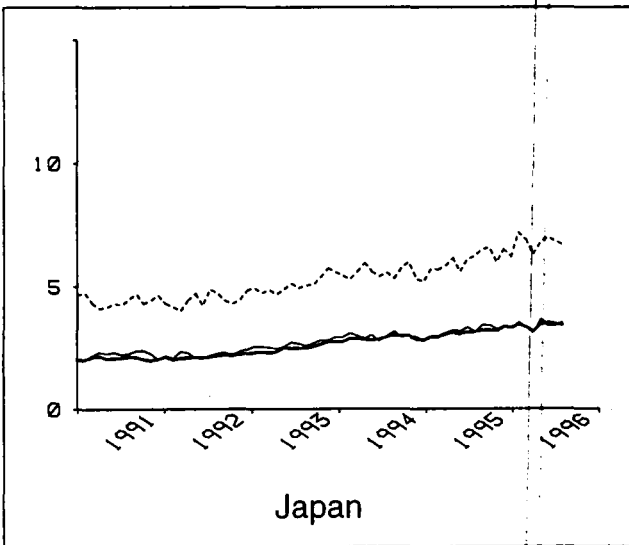
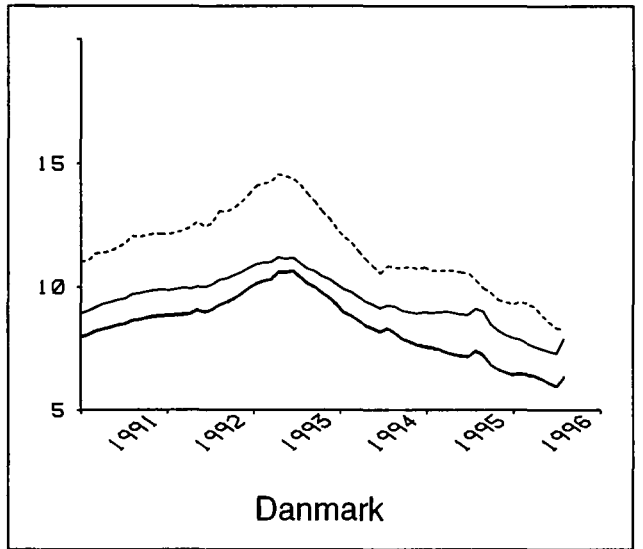
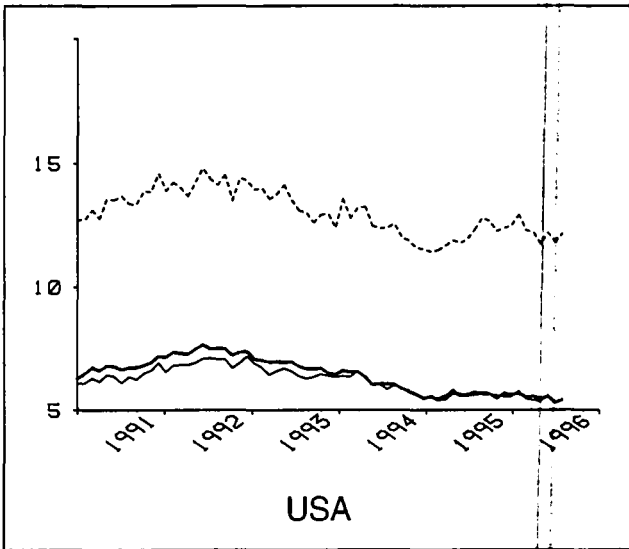
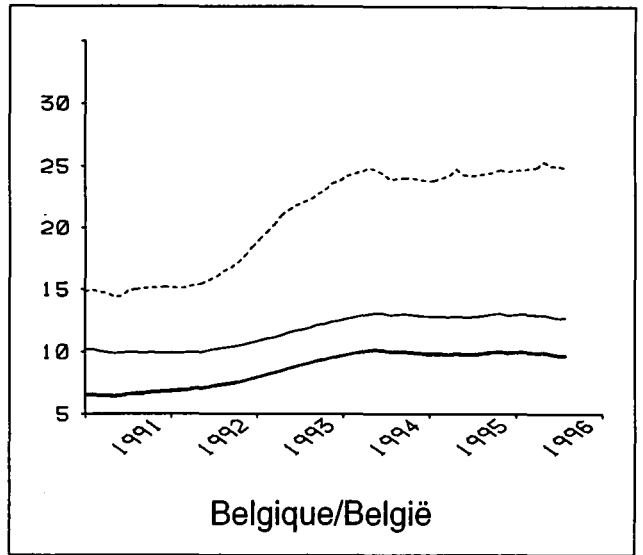
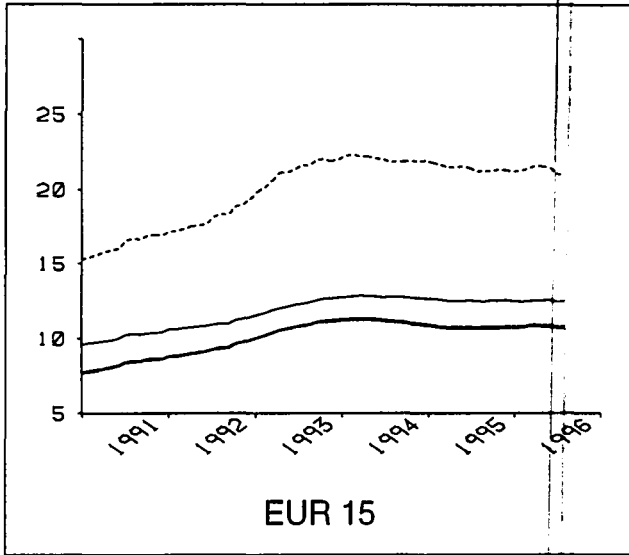
Table of contents :

Unemployment rates, seasonally-adjusted :	
- graphs.....	3-5
- tables	6-7
Unemployment rates, not seasonally-adjusted.....	8-9
Unemployment rates, annual averages.....	10-11
Number of unemployed, annual averages.....	12
Methodological notes.....	13-14

Signs and abbreviations :

Eur-15	All Member States of the European Union
T	Total
F	Females
< 25	Persons aged under 25
:	Data not available

Unemployment rates, seasonally adjusted (%)



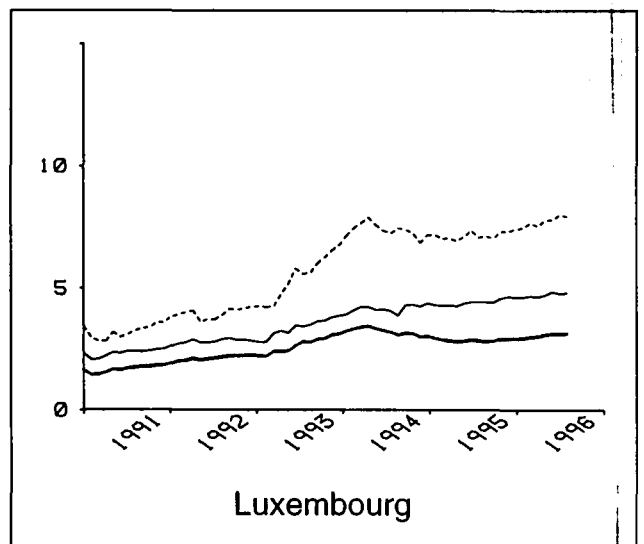
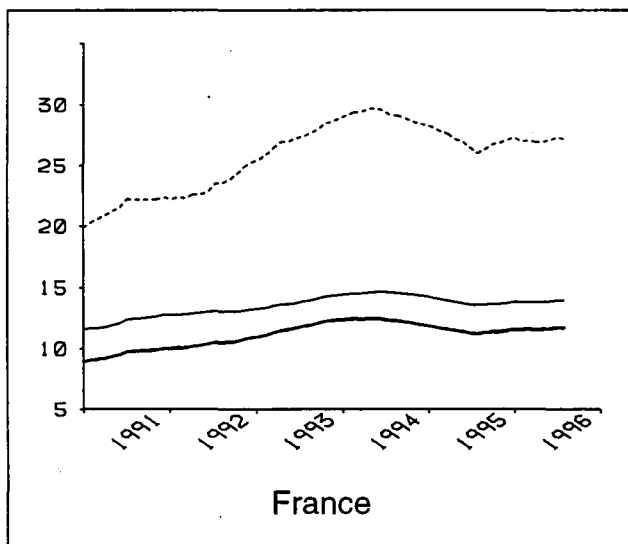
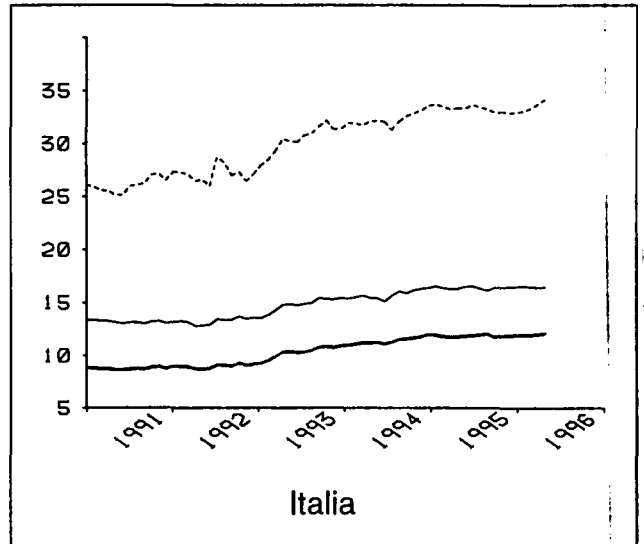
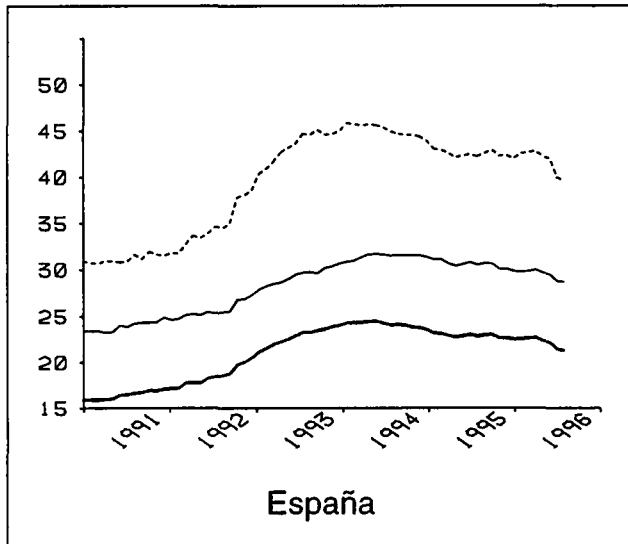
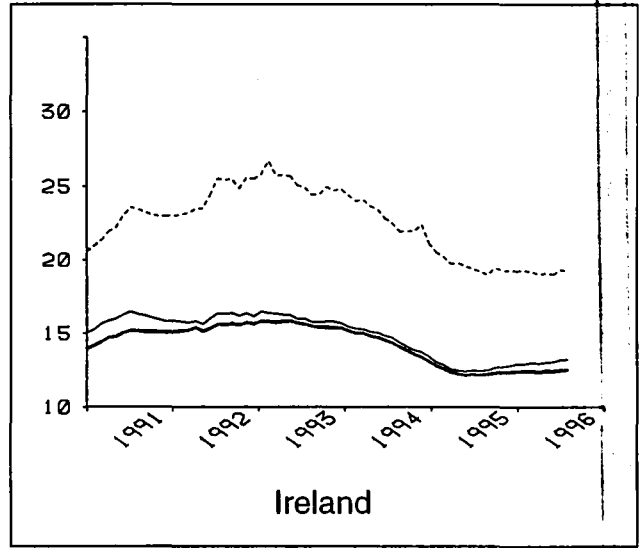
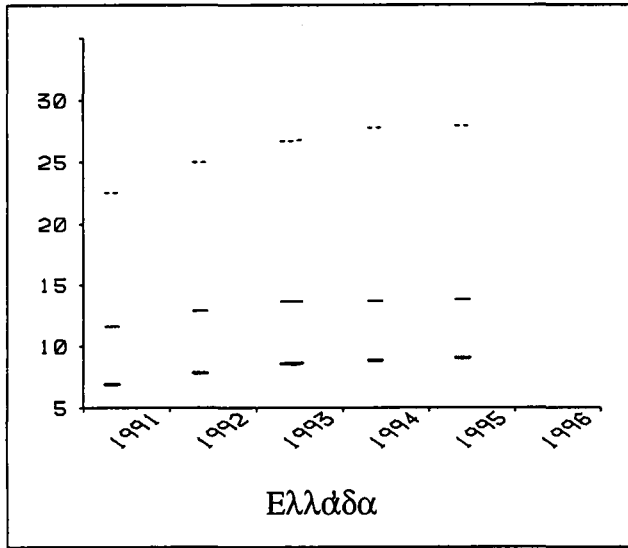
— Total

- - - Under 25 years

— Females

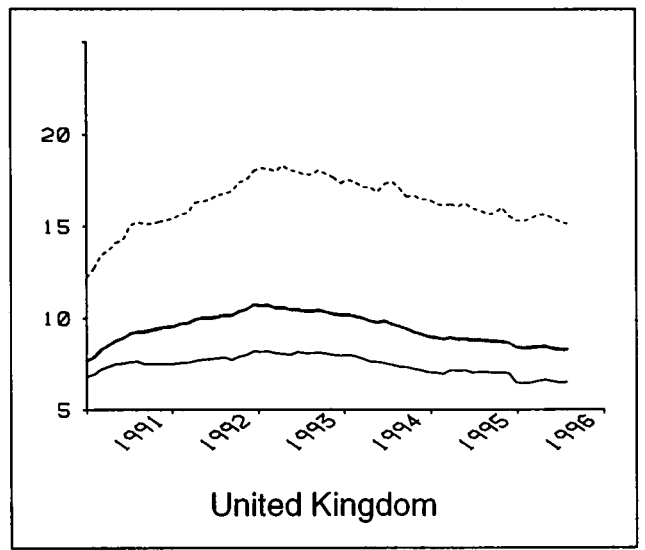
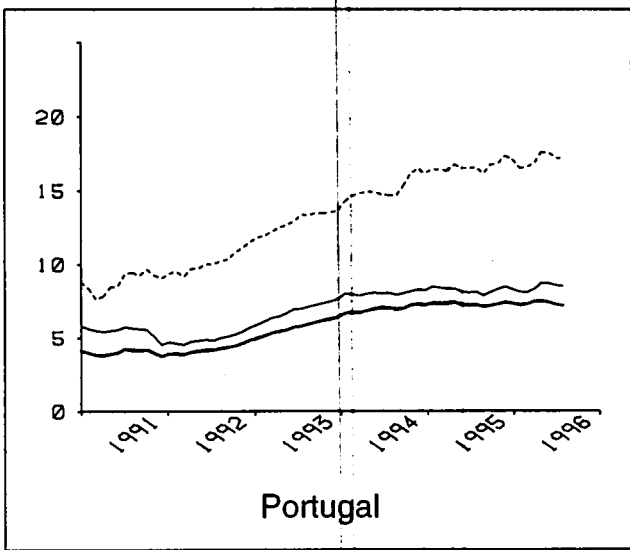
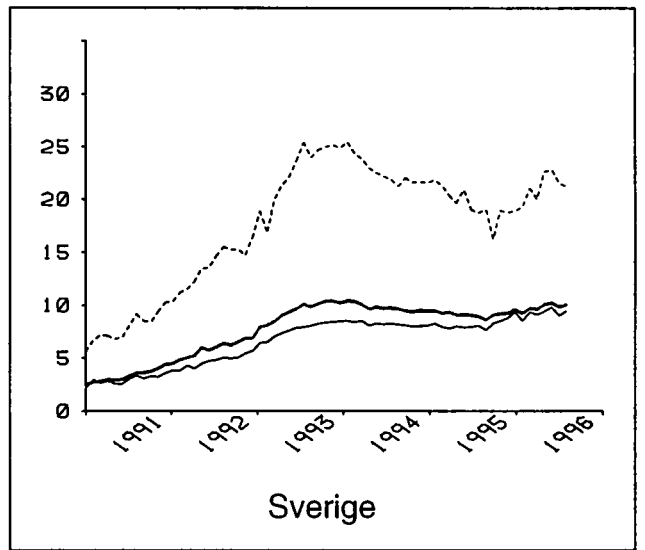
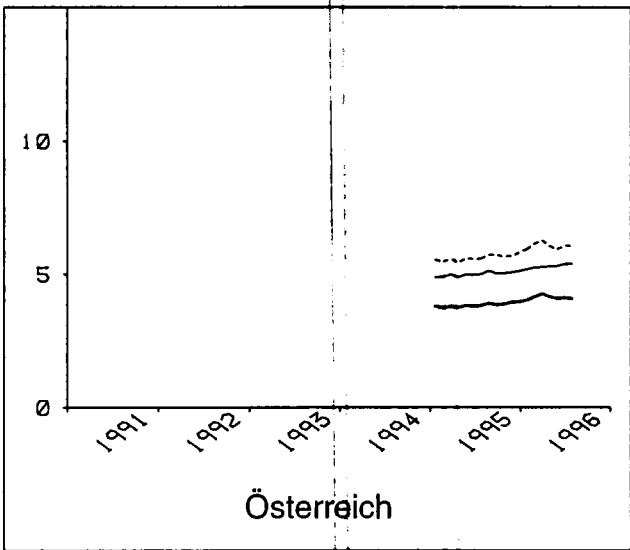
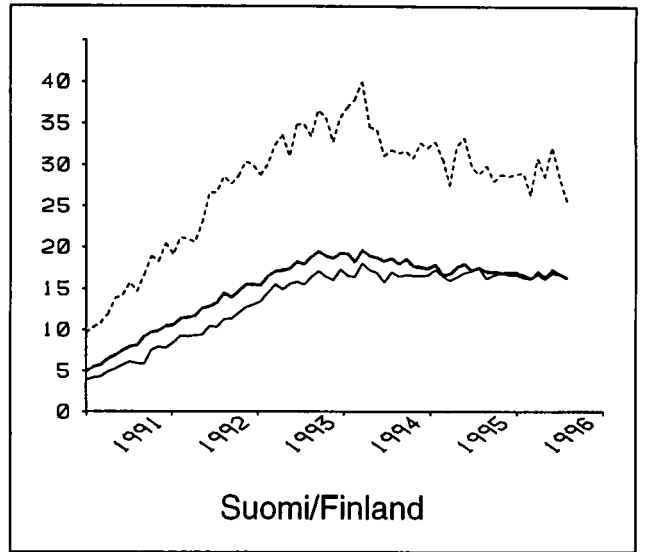
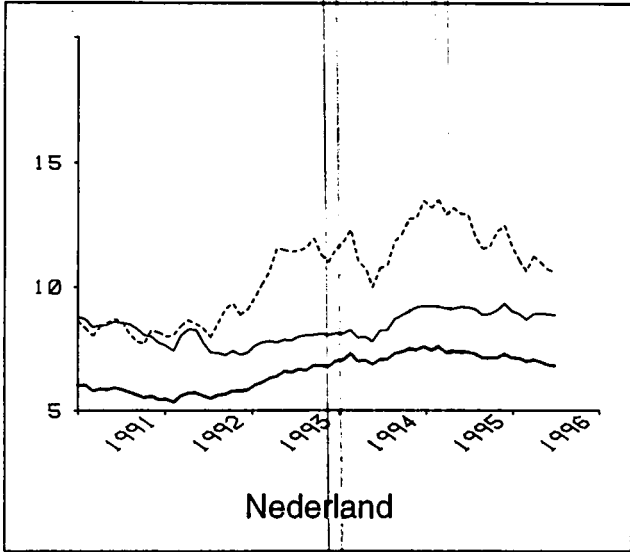


Unemployment rates, seasonally adjusted (%)



Total
 Under 25 years
 Females

Unemployment rates, seasonally adjusted (%)



— Total

- - - Under 25 years

— Females



9 Unemployment rates, seasonally adjusted

(%)

	EUR 15	Belgique/ België	Danmark	Deutschland	Ελλάδα	España	France	Ireland	Italia	Luxembourg	Nederland	Österreich	Portugal	Suomi/ Finland	Sverige	United Kingdom	USA	Japan
Total Males and females																		
1994.07	11.2	10.0	8.3	8.5	:	24.1	12.3	14.3	11.3	3.2	7.1	:	7.0	18.6	9.8	9.7	6.1	2.9
1995.07	10.7	9.9	7.4	8.2	:	22.9	11.2	12.2	12.0	2.8	7.3	3.8	7.2	17.5	8.9	8.8	5.7	3.1
1996.03	10.9	9.9	6.4	9.0	:	22.7	11.6	12.4	12.0	3.0	7.1	4.3	7.5	16.7	9.7	8.4	5.6	3.2
1996.04	10.8	10.0	6.3	8.9	:	22.3	11.5	12.5	12.1	3.1	7.0	4.2	7.5	16.2	10.1	8.4	5.5	3.5
1996.05	10.8	9.8	6.1	8.9	:	22.2	11.6	12.4	:	3.1	6.9	4.1	7.4	16.9	10.2	8.3	5.5	3.5
1996.06	10.7	9.7	5.9	8.9	:	21.4	11.7	12.5	:	3.1	6.8	4.1	7.3	16.8	9.9	8.3	5.3	3.5
1996.07	10.7	9.7	6.3	8.9	:	21.3	11.7	12.5	:	3.1	:	4.1	7.2	16.3	10.1	8.3	5.4	3.4
Males																		
1994.07	10.0	8.0	7.5	7.2	:	19.6	10.5	14.1	8.7	2.7	6.3	:	6.2	20.1	11.1	11.4	6.2	2.9
1995.07	9.4	7.7	6.0	7.0	:	18.1	9.2	12.1	9.4	1.9	6.0	2.9	6.5	17.7	9.7	10.1	5.6	3.1
1996.03	9.7	7.8	5.4	8.2	:	18.2	9.7	12.0	9.4	2.1	5.7	3.5	6.8	16.4	10.1	9.9	5.7	3.2
1996.04	9.6	7.8	5.3	8.0	:	17.8	9.7	12.1	9.5	2.2	5.6	3.3	6.5	16.0	10.8	9.9	5.5	3.4
1996.05	9.6	7.7	5.0	8.0	:	17.6	9.8	12.0	:	2.2	5.4	3.2	6.4	16.5	10.6	9.7	5.5	3.6
1996.06	9.5	7.6	4.8	7.9	:	16.9	9.8	12.1	:	2.2	5.4	3.1	6.2	16.8	10.7	9.7	5.3	3.5
1996.07	9.5	7.6	5.1	7.9	:	16.7	9.8	12.1	:	2.2	:	3.1	6.1	16.4	10.6	9.6	5.4	3.4
Females																		
1994.07	12.8	12.9	9.2	10.1	:	31.5	14.6	14.7	15.6	4.0	8.3	:	8.0	16.9	8.3	7.4	5.8	3.0
1995.07	12.5	12.9	9.1	9.7	:	30.5	13.6	12.5	16.3	4.4	9.1	5.0	8.1	17.4	8.1	7.0	5.8	3.2
1996.03	12.5	13.0	7.6	10.1	:	30.0	13.8	13.0	16.4	4.6	8.9	5.3	8.3	17.1	9.1	6.6	5.4	3.1
1996.04	12.5	13.0	7.5	10.1	:	29.7	13.8	13.0	16.5	4.7	8.9	5.3	8.7	16.4	9.4	6.6	5.3	3.6
1996.05	12.6	12.8	7.4	10.1	:	29.4	13.9	13.1	:	4.8	8.9	5.3	8.7	17.3	9.8	6.5	5.6	3.4
1996.06	12.4	12.7	7.3	10.2	:	28.7	14.0	13.2	:	4.8	8.9	5.4	8.6	16.8	9.0	6.5	5.3	3.4
1996.07	12.5	12.7	7.9	10.2	:	28.7	14.0	13.2	:	4.8	:	5.4	8.5	16.2	9.4	6.5	5.4	3.5
Under 25 years Males and females																		
1994.07	21.9	23.9	10.8	8.8	:	44.9	29.1	22.5	31.3	7.2	10.9	:	14.7	31.8	21.9	17.4	12.4	5.6
1995.07	21.2	24.3	10.3	8.8	:	42.2	26.0	19.2	33.5	7.0	12.0	5.6	16.5	28.9	18.7	15.9	12.3	6.2
1996.03	21.6	24.9	9.2	9.6	:	42.8	26.9	19.0	33.8	7.5	11.2	6.2	16.8	30.8	20.0	15.6	12.2	6.3
1996.04	21.6	25.4	8.8	9.5	:	42.3	26.9	19.0	34.2	7.8	11.0	6.0	17.6	28.5	22.6	15.6	11.7	6.8
1996.05	21.5	25.0	8.6	9.4	:	42.0	27.1	19.0	:	7.8	10.7	5.9	17.6	32.2	22.8	15.4	12.2	7.0
1996.06	21.1	25.0	8.3	9.6	:	39.9	27.3	19.3	:	8.0	10.6	6.0	17.2	28.3	21.5	15.2	11.8	6.8
1996.07	21.0	24.8	8.3	9.5	:	39.6	27.1	19.2	:	7.9	:	6.0	17.2	25.6	21.2	15.1	12.2	6.7

Unemployment rates, seasonally adjusted

(%)

	EUR 15	Belgique/ België	Danmark	Deutschland	Ελλάδα	España	France	Ireland	Italia	Luxembourg	Nederland	Österreich	Portugal	Suomi/ Finland	Sverige	United Kingdom	USA	Japan
Under 25 years																		
Males																		
1994.07	21.2	22.3	10.7	8.9	:	40.6	26.1	24.4	28.3	7.9	11.3	:	13.1	33.7	24.0	20.3	13.4	5.6
1995.07	19.6	22.3	8.1	8.9	:	36.3	21.9	20.5	29.1	6.2	10.6	4.4	15.0	29.2	20.1	17.8	12.4	6.6
1996.03	20.4	22.9	7.7	10.5	:	37.3	23.2	20.0	29.6	6.9	10.3	5.2	15.1	31.0	20.1	18.4	13.0	6.6
1996.04	20.4	23.5	7.3	10.2	:	36.8	23.2	20.1	30.0	7.2	9.5	4.9	15.1	31.5	24.0	18.4	12.6	6.9
1996.05	20.3	23.1	7.0	10.1	:	36.6	23.5	20.1	:	7.1	9.7	4.7	14.9	34.0	23.7	18.1	12.8	7.3
1996.06	19.8	23.1	6.7	10.1	:	34.5	23.6	20.3	:	7.6	9.2	4.7	14.4	30.4	22.0	17.8	12.4	7.0
1996.07	19.6	22.9	6.6	10.0	:	34.1	23.5	20.3	:	7.5	:	4.6	14.4	28.9	20.5	17.6	13.1	6.9
Females																		
1994.07	22.6	25.7	11.0	8.7	:	50.3	32.3	20.3	35.1	6.5	10.4	:	16.6	29.7	19.5	13.9	11.3	5.5
1995.07	23.0	26.7	12.7	8.7	:	49.2	30.2	17.5	38.8	8.0	13.3	6.9	18.5	28.5	17.3	13.5	12.2	5.8
1996.03	22.9	27.3	10.9	8.7	:	49.4	30.7	17.7	39.0	8.3	12.2	7.3	19.1	30.5	19.9	12.4	11.3	6.0
1996.04	22.9	27.6	10.6	8.7	:	48.9	30.6	17.7	39.6	8.4	12.5	7.2	20.7	25.2	21.2	12.4	10.8	6.6
1996.05	22.8	27.2	10.3	8.6	:	48.5	30.8	17.7	:	8.5	11.7	7.2	21.0	30.3	21.9	12.3	11.5	6.6
1996.06	22.5	27.3	10.1	8.9	:	46.5	31.1	18.1	:	8.4	12.0	7.5	20.8	25.9	21.1	12.2	11.1	6.6
1996.07	22.5	27.1	10.1	8.9	:	46.3	30.9	18.0	:	8.4	:	7.5	20.7	21.5	22.0	12.2	11.1	6.5
25 years and over																		
Males																		
1994.07	8.3	6.3	6.8	7.0	:	15.7	8.7	12.1	5.9	2.0	5.4	:	5.0	18.4	9.3	9.6	4.9	2.6
1995.07	7.9	6.1	5.5	6.8	:	14.9	7.9	10.4	6.6	1.5	5.2	2.7	5.1	16.3	8.3	8.7	4.3	2.7
1996.03	8.1	6.1	4.9	7.9	:	14.7	8.2	10.4	6.5	1.6	5.0	3.2	5.3	14.7	8.8	8.2	4.3	2.8
1996.04	8.1	6.1	4.8	7.7	:	14.4	8.2	10.5	6.6	1.6	4.9	3.0	5.0	14.2	9.2	8.2	4.2	2.9
1996.05	8.0	6.0	4.6	7.7	:	14.3	8.3	10.4	:	1.6	4.6	2.9	4.9	14.4	9.0	8.2	4.1	3.1
1996.06	8.0	5.9	4.4	7.7	:	13.9	8.3	10.5	:	1.6	4.7	2.8	4.8	15.1	9.2	8.1	4.0	3.1
1996.07	8.0	5.9	4.7	7.6	:	13.8	8.3	10.5	:	1.6	:	2.8	4.7	14.9	9.3	8.1	4.0	2.9
Females																		
1994.07	10.9	11.1	8.9	10.3	:	26.4	12.2	12.9	11.7	3.6	7.7	:	6.4	15.4	6.7	6.0	4.7	2.5
1995.07	10.6	11.0	8.3	9.8	:	25.6	11.5	10.9	11.8	3.8	8.0	4.6	6.4	16.1	6.8	5.7	4.5	2.7
1996.03	10.7	11.0	6.8	10.3	:	25.1	11.6	11.6	11.9	4.0	8.1	4.8	6.5	15.7	7.7	5.4	4.3	2.6
1996.04	10.7	10.9	6.7	10.3	:	24.9	11.6	11.6	11.9	4.0	8.0	4.9	6.8	15.3	7.9	5.4	4.3	3.1
1996.05	10.7	10.8	6.7	10.4	:	24.8	11.7	11.7	:	4.1	8.2	4.9	6.7	15.8	8.3	5.4	4.5	2.8
1996.06	10.7	10.7	6.6	10.3	:	24.5	11.8	11.8	:	4.1	8.1	4.9	6.6	15.7	7.4	5.3	4.2	2.8
1996.07	10.7	10.7	7.4	10.3	:	24.5	11.8	11.8	:	4.1	:	4.9	6.5	15.6	7.8	5.3	4.4	3.0

∞ Unemployment rates, not seasonally adjusted

(%)

	EUR 15	Belgique/ België	Danmark	Deutschland	Ελλάδα	España	France	Ireland	Italia	Luxembourg	Nederland	Österreich	Portugal	Suomi/ Finland	Sverige	United Kingdom	USA	Japan
Total Males and females																		
1994.07	11.0	10.2	7.8	8.5	:	23.7	11.9	14.5	10.9	2.9	7.0	:	6.8	18.3	9.8	9.9	6.2	2.8
1995.07	10.6	10.1	7.0	8.2	:	22.5	10.8	12.4	11.6	2.5	7.2	3.2	7.0	17.3	9.0	9.0	5.9	3.0
1996.03	11.1	9.7	6.8	9.3	:	23.1	11.6	12.4	12.3	3.1	7.2	4.5	7.6	17.1	9.7	8.4	5.8	3.5
1996.04	10.8	9.5	6.4	9.0	:	22.3	11.3	12.4	12.2	3.0	6.9	4.2	7.4	16.5	10.0	8.4	5.4	3.5
1996.05	10.5	9.2	5.8	8.7	:	21.8	11.1	12.1	:	2.9	6.6	3.8	7.2	16.6	9.6	8.1	5.4	3.5
1996.06	10.5	9.1	5.6	8.6	:	21.5	11.0	12.5	:	2.8	6.5	3.4	7.1	16.6	10.2	8.2	5.5	3.3
1996.07	10.6	9.9	6.0	8.8	:	21.0	11.2	12.7	:	2.8	:	3.4	6.9	15.9	10.0	8.5	5.6	3.2
Males																		
1994.07	9.8	8.0	6.9	7.1	:	19.2	9.9	14.2	8.5	2.4	6.1	:	6.1	18.8	11.0	11.6	6.1	2.8
1995.07	9.2	7.8	5.5	6.9	:	17.7	8.7	12.1	9.2	1.7	5.9	2.2	6.4	16.5	9.5	10.3	5.5	3.0
1996.03	10.0	7.6	6.0	8.7	:	18.5	9.9	12.1	9.6	2.2	6.0	4.0	6.9	17.4	10.6	9.9	6.3	3.5
1996.04	9.6	7.5	5.5	8.2	:	17.8	9.5	12.1	9.6	2.2	5.6	3.1	6.5	16.7	10.9	9.8	5.6	3.3
1996.05	9.3	7.2	4.8	7.7	:	17.3	9.4	11.8	:	2.0	5.2	2.6	6.3	16.0	10.1	9.5	5.4	3.6
1996.06	9.2	7.0	4.5	7.6	:	16.9	9.2	12.0	:	1.9	5.2	2.4	6.2	15.8	10.7	9.8	5.3	3.4
1996.07	9.3	7.7	4.6	7.7	:	16.4	9.2	12.1	:	1.9	:	2.3	6.0	15.2	10.3	9.9	5.4	3.2
Females																		
1994.07	12.7	13.3	9.0	10.3	:	31.2	14.2	15.1	15.1	3.7	8.1	:	7.7	17.6	8.5	7.7	6.4	2.8
1995.07	12.4	13.2	8.9	9.9	:	30.2	13.2	12.8	15.8	4.0	8.9	4.5	7.7	18.1	8.4	7.3	6.3	3.0
1996.03	12.6	12.6	7.7	10.2	:	30.4	13.7	12.8	16.7	4.8	9.0	5.2	8.4	16.7	8.7	6.5	5.3	3.4
1996.04	12.4	12.4	7.4	10.1	:	29.6	13.4	12.8	16.5	4.6	8.7	5.7	8.5	16.3	9.0	6.5	5.1	3.7
1996.05	12.2	12.1	7.1	9.9	:	29.0	13.3	12.6	:	4.5	8.5	5.2	8.4	17.1	9.0	6.2	5.4	3.5
1996.06	12.2	12.0	7.0	9.9	:	28.9	13.3	13.3	:	4.4	8.4	4.8	8.2	17.5	9.7	6.2	5.7	3.2
1996.07	12.4	13.1	7.7	10.3	:	28.4	13.6	13.6	:	4.4	:	4.9	8.0	16.6	9.6	6.7	5.9	3.3
Under 25 years Males and females																		
1994.07	21.7	25.1	10.1	9.2	:	44.1	27.2	22.9	30.6	5.9	11.2	:	13.8	28.4	17.9	19.1	12.7	5.5
1995.07	21.1	25.4	9.6	9.2	:	41.4	24.1	19.4	32.8	5.8	12.2	4.5	15.5	25.4	15.1	17.5	12.7	6.1
1996.03	21.6	23.3	9.8	10.2	:	43.5	25.7	18.9	33.9	7.8	11.2	6.3	17.3	33.8	20.9	15.3	12.5	8.1
1996.04	21.0	22.6	9.0	9.4	:	41.9	24.6	18.8	34.1	7.4	10.3	6.3	17.3	31.1	23.1	15.0	11.6	7.2
1996.05	20.4	21.4	8.0	8.7	:	40.9	24.1	18.2	:	6.7	9.9	5.4	17.0	31.7	21.6	14.6	12.6	7.1
1996.06	20.6	21.2	7.4	9.0	:	40.5	24.2	19.2	:	6.6	10.0	4.8	16.6	26.7	21.4	15.9	13.0	6.6
1996.07	21.0	26.0	7.7	9.9	:	39.3	25.1	19.4	:	6.7	:	4.9	16.2	21.3	17.2	17.2	12.6	6.5

Unemployment rates, not seasonally adjusted

(%)

	EUR 15	Belgique/ België	Danmark	Deutschland	Ελλάδα	España	France	Ireland	Italia	Luxembourg	Nederland	Österreich	Portugal	Suomi/ Finland	Sverige	United Kingdom	USA	Japan
Under 25 years																		
Males																		
1994.07	20.9	23.1	9.9	9.1	:	39.4	23.7	24.6	27.5	6.2	11.6	:	12.4	28.0	19.9	21.8	13.1	5.6
1995.07	19.3	23.0	7.5	9.1	:	35.1	19.7	20.6	28.5	4.9	10.8	3.0	14.1	22.9	15.9	19.2	12.2	6.5
1996.03	20.8	21.5	8.5	11.5	:	38.1	22.6	20.2	29.7	7.4	11.1	5.9	15.5	38.1	22.3	18.2	14.1	8.5
1996.04	20.0	20.8	7.7	10.3	:	36.6	21.4	20.1	30.0	7.0	9.3	4.7	14.9	33.6	24.9	17.9	12.7	7.0
1996.05	19.5	19.7	6.6	9.5	:	35.7	20.8	19.3	:	6.4	9.3	3.9	14.6	34.0	22.6	17.5	13.2	7.0
1996.06	19.5	19.2	6.0	9.5	:	35.0	20.3	20.0	:	6.1	8.6	3.4	14.1	27.9	21.8	18.7	13.1	7.0
1996.07	19.5	23.7	6.1	10.2	:	33.3	21.1	20.2	:	6.2	:	3.2	13.7	21.5	16.4	19.6	13.0	6.6
Females																		
1994.07	22.6	27.4	10.4	9.3	:	49.8	30.8	21.0	34.4	5.6	10.7	:	15.5	28.8	15.8	15.8	12.3	5.4
1995.07	23.1	28.3	12.0	9.3	:	48.8	28.6	18.1	38.2	6.9	13.6	6.1	17.1	28.1	14.2	15.4	13.3	5.7
1996.03	22.5	25.4	11.2	8.6	:	49.9	28.9	17.3	39.3	8.3	11.3	6.8	19.6	28.8	19.3	11.8	10.8	7.6
1996.04	22.1	24.6	10.5	8.3	:	48.4	28.0	17.3	39.1	7.7	11.3	8.0	20.4	28.4	21.4	11.5	10.3	7.3
1996.05	21.5	23.5	9.6	7.8	:	47.2	27.6	16.9	:	7.1	10.4	7.1	20.1	29.1	20.5	11.1	11.9	7.2
1996.06	22.0	23.5	9.1	8.5	:	47.2	28.2	18.2	:	7.0	11.3	6.3	19.7	25.3	20.8	12.4	12.9	6.2
1996.07	22.6	28.8	9.5	9.6	:	46.4	29.3	18.4	:	7.3	:	6.7	19.4	21.1	18.1	14.3	12.1	6.3
25 years and over																		
Males																		
1994.07	8.1	6.3	6.2	6.8	:	15.4	8.3	12.0	5.7	1.9	5.2	:	4.9	17.3	9.5	9.5	4.6	2.4
1995.07	7.7	6.1	5.0	6.6	:	14.6	7.5	10.4	6.4	1.4	5.0	2.0	5.1	15.4	8.4	8.6	4.0	2.5
1996.03	8.4	6.1	5.5	8.4	:	15.0	8.5	10.5	6.7	1.6	5.1	3.6	5.4	15.2	9.2	8.3	4.9	2.8
1996.04	8.1	6.0	5.1	7.9	:	14.5	8.3	10.5	6.7	1.6	4.9	2.9	5.0	14.9	9.4	8.3	4.4	2.8
1996.05	7.9	5.9	4.5	7.5	:	14.1	8.1	10.3	:	1.5	4.5	2.4	4.9	13.9	8.7	8.0	3.9	3.1
1996.06	7.7	5.7	4.2	7.3	:	13.8	8.0	10.4	:	1.5	4.6	2.2	4.8	13.6	9.0	8.1	3.7	2.9
1996.07	7.8	5.9	4.3	7.4	:	13.5	7.9	10.5	:	1.5	:	2.1	4.7	14.2	9.2	8.1	3.8	2.8
Females																		
1994.07	10.8	11.2	8.7	10.5	:	26.1	12.0	13.2	11.1	3.3	7.4	:	6.2	15.7	7.2	5.9	5.0	2.3
1995.07	10.5	11.1	8.1	9.9	:	25.3	11.3	11.3	11.1	3.5	7.7	4.2	6.1	16.4	7.4	5.5	4.8	2.4
1996.03	10.8	10.8	6.8	10.4	:	25.6	11.8	11.5	12.3	4.2	8.4	4.9	6.5	15.5	7.5	5.4	4.2	2.7
1996.04	10.7	10.8	6.7	10.3	:	25.0	11.6	11.5	12.1	4.0	8.0	5.2	6.6	15.0	7.5	5.5	4.1	3.0
1996.05	10.6	10.6	6.5	10.2	:	24.6	11.5	11.4	:	4.0	8.0	4.8	6.5	15.8	7.6	5.3	4.1	2.8
1996.06	10.5	10.5	6.5	10.1	:	24.5	11.5	11.8	:	3.9	7.7	4.5	6.3	16.1	7.9	4.9	4.2	2.6
1996.07	10.6	10.9	7.3	10.4	:	24.2	11.6	12.2	:	3.8	:	4.5	6.2	15.9	8.3	5.2	4.6	2.7

Unemployment rates, annual averages

(%)

	EUR 15	Belgique/ België	Danmark	Deutschland	Ελλάδα	España	France	Ireland	Italia	Luxembourg	Nederland	Österreich	Portugal	Suomi/ Finland	Sverige	United Kingdom	USA	Japan
Total																		
Males and females																		
1989	:	7.5	7.4	:	6.7	17.2	9.3	14.7	10.0	1.8	6.9	:	4.9	3.5	1.6	7.3	5.3	2.3
1990	:	6.7	7.7	:	6.4	16.2	8.9	13.4	9.1	1.7	6.2	:	4.6	3.4	1.8	7.0	5.5	2.1
1991	8.2	6.6	8.4	5.6	7.0	16.4	9.5	14.8	8.8	1.7	5.8	:	4.0	7.6	3.3	8.8	6.7	2.1
1992	9.3	7.3	9.2	6.6	7.9	18.5	10.4	15.4	9.0	2.1	5.6	:	4.2	13.1	5.8	10.1	7.4	2.2
1993	10.7	8.9	10.1	7.9	8.6	22.8	11.7	15.6	10.3	2.7	6.6	:	5.7	17.9	9.5	10.4	6.8	2.5
1994	11.2	10.0	8.2	8.4	8.9	24.1	12.3	14.3	11.4	3.2	7.2	:	7.0	18.4	9.8	9.6	6.1	2.9
1995	10.7	9.9	7.1	8.2	9.1	22.9	11.5	12.4	11.9	2.9	7.3	3.8	7.3	17.2	9.2	8.8	5.6	3.1
Males																		
1989	:	4.7	6.7	:	4.1	12.9	7.0	14.2	7.1	1.3	4.9	:	3.5	3.6	1.6	7.4	5.2	2.2
1990	:	4.1	7.0	:	3.9	11.9	6.7	12.8	6.4	1.2	4.3	:	3.2	4.0	1.8	7.4	5.6	2.0
1991	6.9	4.3	7.5	4.6	4.4	12.3	7.4	14.2	6.2	1.3	4.1	:	2.8	9.3	3.6	9.9	7.0	2.0
1992	8.1	5.3	8.3	5.2	5.0	14.5	8.3	15.1	6.5	1.7	4.3	:	3.6	15.5	6.9	11.9	7.8	2.1
1993	9.7	6.9	9.6	6.6	5.7	19.1	10.0	15.4	7.8	2.2	5.6	:	4.8	19.8	11.1	12.3	7.1	2.4
1994	10.0	7.9	7.3	7.2	6.0	19.7	10.4	14.1	8.9	2.7	6.4	:	6.1	19.9	11.2	11.3	6.2	2.8
1995	9.4	7.8	5.7	7.1	6.2	18.2	9.5	12.2	9.2	2.0	6.0	2.9	6.5	17.6	10.1	10.1	5.6	3.1
Females																		
1989	:	11.9	8.2	:	11.1	25.3	12.3	15.5	15.1	2.7	10.2	:	6.9	3.3	1.7	7.1	5.4	2.3
1990	:	10.6	8.4	:	10.8	24.1	11.8	14.6	13.8	2.5	9.1	:	6.2	2.8	1.8	6.6	5.4	2.2
1991	10.0	10.0	9.5	7.0	11.8	23.9	12.2	15.9	13.2	2.3	8.4	:	5.4	5.7	2.9	7.4	6.3	2.2
1992	10.9	10.2	10.2	8.5	13.0	25.6	13.0	16.0	13.2	2.8	7.6	:	5.0	10.5	4.7	7.8	6.9	2.2
1993	12.2	11.8	10.8	9.6	13.6	29.3	13.8	16.0	14.8	3.4	7.9	:	6.8	15.7	7.7	8.1	6.5	2.6
1994	12.7	12.9	9.3	10.1	13.7	31.4	14.5	14.6	15.7	4.1	8.5	:	8.0	16.7	8.2	7.5	6.0	3.0
1995	12.5	12.9	8.7	9.8	13.8	30.5	13.8	12.6	16.4	4.4	9.1	5.0	8.2	16.7	8.2	7.0	5.6	3.2
Under 25 years																		
Males and females																		
1989	:	16.2	11.2	:	22.5	34.2	20.0	20.3	29.3	4.2	9.8	:	11.1	6.5	3.9	10.4	10.9	4.5
1990	:	15.3	11.4	:	21.5	32.3	19.3	19.4	27.4	3.8	8.6	:	10.0	6.7	4.5	10.8	11.1	4.3
1991	16.2	14.9	11.6	5.9	22.9	31.1	21.5	22.4	26.0	3.2	8.3	:	8.8	14.5	7.8	14.3	13.4	4.4
1992	18.0	16.2	12.7	6.4	25.1	34.6	23.3	24.4	27.1	4.0	8.5	:	10.1	25.2	13.6	16.7	14.2	4.5
1993	21.3	21.8	13.8	7.9	26.8	43.4	27.3	25.2	30.4	5.4	11.1	:	12.9	33.3	22.6	17.9	13.3	5.1
1994	22.0	24.2	11.0	8.7	27.7	45.0	29.0	22.8	32.3	7.3	11.7	:	15.1	33.6	22.6	17.0	12.5	5.5
1995	21.4	24.4	10.1	8.8	27.9	42.5	27.0	19.5	33.2	7.1	12.5	5.6	16.6	29.9	19.4	15.9	12.1	6.1

Unemployment rates, annual averages

(%)

	EUR 15	Belgique/ België	Danmark	Deutschland	Ελλάδα	España	France	Ireland	Italia	Luxembourg	Nederland	Österreich	Portugal	Suomi/ Finland	Sverige	United Kingdom	USA	Japan
Under 25 years																		
Males																		
1989	:	11.8	10.7	:	15.4	27.6	16.3	21.8	24.7	3.5	8.2	:	9.0	6.6	3.9	11.2	11.4	4.8
1990	:	11.0	11.3	:	14.4	26.2	15.8	20.4	23.3	3.2	7.5	:	8.4	8.1	4.6	11.9	11.6	4.5
1991	15.0	11.9	11.1	5.4	16.0	25.7	18.1	23.7	22.6	3.3	7.4	:	6.8	17.7	8.5	16.6	14.3	4.7
1992	17.2	14.3	12.2	5.8	17.4	29.9	20.1	25.8	23.4	4.2	8.5	:	9.1	29.2	15.9	19.7	15.3	4.7
1993	20.8	20.7	13.4	7.8	18.9	40.0	25.1	27.0	26.6	5.2	12.0	:	10.8	36.9	26.0	21.0	14.3	4.9
1994	21.4	22.6	10.6	8.8	19.7	40.9	26.2	24.7	29.0	7.5	12.5	:	13.5	36.9	25.3	19.7	13.2	5.7
1995	20.0	22.3	8.1	8.8	19.4	36.9	23.2	20.8	29.0	6.4	11.7	4.4	15.1	31.1	20.6	18.1	12.5	6.2
Females																		
1989	:	21.2	11.6	:	30.9	42.3	23.9	18.6	34.8	5.0	11.4	:	13.6	6.3	3.8	9.4	10.4	4.3
1990	:	19.9	11.5	:	29.9	39.7	23.0	18.2	32.4	4.6	9.6	:	11.9	5.2	4.5	9.6	10.6	4.1
1991	17.5	18.0	12.2	6.3	31.3	37.9	25.0	20.9	30.3	3.1	9.1	:	11.1	11.1	7.1	11.6	12.4	4.2
1992	19.0	18.2	13.3	7.0	34.3	40.6	26.8	22.8	31.7	3.7	8.6	:	11.2	20.9	11.1	13.0	13.0	4.2
1993	21.8	23.0	14.1	8.1	36.1	47.6	29.7	23.0	35.1	5.6	10.1	:	15.3	29.2	19.0	14.2	12.2	5.2
1994	22.8	26.0	11.6	8.6	37.0	50.1	32.0	20.6	36.4	7.2	11.0	:	17.0	29.9	19.8	13.7	11.6	5.4
1995	23.0	26.8	12.4	8.6	37.7	49.0	31.0	17.9	38.5	7.9	13.2	6.9	18.6	28.5	18.1	13.3	11.6	6.0
25 years and over																		
Males																		
1989	:	3.8	5.7	:	2.6	9.8	5.6	12.5	4.0	1.0	4.2	:	2.2	3.1	1.2	6.5	3.9	1.9
1990	:	3.3	6.1	:	2.6	9.0	5.4	11.1	3.7	1.0	3.7	:	2.1	3.4	1.3	6.3	4.4	1.7
1991	5.5	3.5	6.7	4.5	2.9	9.6	6.0	12.1	3.4	1.0	3.4	:	2.0	8.1	2.7	8.4	5.7	1.7
1992	6.5	4.2	7.5	5.1	3.4	11.4	6.8	12.8	3.8	1.4	3.5	:	2.6	13.6	5.5	10.1	6.4	1.8
1993	7.9	5.3	8.8	6.4	4.0	15.0	8.2	12.9	4.9	1.9	4.5	:	3.7	17.7	9.0	10.5	5.8	2.1
1994	8.3	6.2	6.6	7.0	4.4	15.8	8.6	11.9	5.9	2.1	5.3	:	4.8	17.9	9.3	9.6	4.8	2.5
1995	7.9	6.1	5.2	6.9	4.6	14.8	8.0	10.4	6.3	1.5	5.0	2.7	5.0	16.1	8.7	8.6	4.3	2.7
Females																		
1989	:	10.1	7.3	:	7.1	19.1	10.1	14.1	9.7	2.1	9.8	:	5.1	2.8	1.2	6.3	4.2	2.0
1990	:	8.9	7.7	:	6.8	18.7	9.8	13.1	9.0	2.0	8.9	:	4.8	2.4	1.3	5.8	4.3	1.8
1991	8.3	8.6	8.8	7.1	7.8	19.3	10.0	13.9	8.8	2.1	8.1	:	4.2	4.9	2.1	6.3	5.1	1.8
1992	9.2	8.9	9.5	8.8	8.8	21.1	10.8	13.6	8.8	2.6	7.3	:	3.6	9.1	3.6	6.5	5.7	1.9
1993	10.3	10.0	10.0	9.9	9.3	24.1	11.5	13.6	10.3	2.9	7.3	:	5.2	13.9	6.0	6.6	5.4	2.2
1994	10.9	11.0	8.8	10.3	9.4	26.3	12.1	12.6	11.5	3.5	7.8	:	6.3	15.1	6.6	6.1	4.9	2.5
1995	10.6	11.0	7.8	9.9	9.6	25.7	11.5	11.1	11.9	3.7	8.0	4.6	6.5	15.4	6.8	5.7	4.4	2.7

13 Number of unemployed, annual averages

1000

	EUR 15	Belgique/ België	Danmark	Deutschland	Ελλάδα	España	France	Ireland	Italia	Luxembourg	Nederland	Österreich	Portugal	Suomi/ Finland	Sverige	United Kingdom	USA	Japan
Total Males and females																		
1989	:	290.5	209.9	:	262.3	2544.5	2238.2	189.5	2311.5	2.9	451.4	:	228.1	88.9	73.7	2081.9	6519.8	1418.6
1990	:	260.6	221.0	:	254.7	2435.5	2152.7	175.7	2123.9	2.7	413.2	:	213.2	88.0	82.7	2022.4	6873.7	1343.3
1991	13627.4	263.0	242.9	2195.2	276.3	2476.7	2323.3	197.5	2064.3	2.8	395.1	:	190.9	193.0	148.1	2528.4	8426.1	1359.2
1992	15345.5	295.4	265.8	2580.0	317.5	2810.0	2557.6	209.5	2097.5	3.6	394.4	:	199.3	328.2	260.4	2891.1	9384.3	1422.5
1993	17799.3	365.5	289.1	3090.3	351.5	3502.6	2908.8	215.1	2345.6	4.5	467.1	:	270.3	443.7	414.9	2979.0	8733.8	1656.7
1994	18498.6	416.2	228.8	3299.3	369.5	3727.4	3049.9	202.2	2570.8	5.4	524.5	:	332.6	455.8	426.2	2744.0	7996.5	1920.8
1995	17855.0	416.2	198.2	3209.0	380.1	3574.0	2850.0	177.7	2683.0	4.8	534.8	146.7	346.5	429.6	404.4	2499.9	7404.3	2099.2
Males																		
1989	:	111.3	102.9	:	102.1	1250.5	943.4	122.7	1045.7	1.4	194.9	:	91.6	48.1	37.6	1214.3	3517.1	828.3
1990	:	97.8	108.7	:	98.7	1162.0	907.5	111.3	954.7	1.3	176.2	:	85.7	54.0	43.2	1206.4	3799.0	773.3
1991	6744.3	104.0	115.7	1031.2	110.7	1197.3	1004.1	124.4	934.2	1.4	168.3	:	75.4	124.1	84.8	1615.6	4817.3	771.7
1992	7802.4	126.6	127.9	1163.0	126.9	1402.7	1132.6	131.8	964.6	1.8	179.7	:	95.0	203.4	160.7	1927.6	5379.7	820.0
1993	9327.0	166.4	144.9	1481.7	146.2	1849.1	1364.7	134.1	1116.6	2.4	237.9	:	125.8	259.4	253.9	1976.5	4932.4	947.5
1994	9598.0	193.6	109.7	1609.2	157.0	1900.9	1416.6	125.2	1260.4	2.8	270.6	:	160.7	259.4	254.7	1813.3	4367.7	1123.3
1995	9049.5	191.4	87.6	1575.4	161.6	1750.7	1290.5	109.2	1302.9	2.1	256.4	63.3	170.5	231.3	231.2	1625.3	3983.0	1230.0
Females																		
1989	:	179.2	107.0	:	160.2	1293.9	1294.8	66.7	1265.8	1.5	256.4	:	136.5	40.7	36.1	867.7	3002.8	590.3
1990	:	162.8	112.3	:	156.0	1273.5	1245.2	64.4	1169.2	1.4	237.1	:	127.5	34.0	39.6	816.0	3074.7	570.0
1991	6883.1	159.0	127.2	1164.1	165.6	1279.3	1319.1	73.1	1130.1	1.4	226.8	:	115.5	68.9	63.3	912.8	3608.8	587.5
1992	7543.1	168.8	137.9	1417.0	190.5	1407.4	1425.0	77.8	1132.9	1.7	214.6	:	104.3	124.8	99.7	963.5	4004.7	602.5
1993	8472.3	199.1	144.1	1608.6	205.3	1653.4	1544.1	81.0	1228.9	2.1	229.2	:	144.5	184.4	161.0	1002.5	3801.3	709.2
1994	8900.6	222.6	119.0	1690.1	212.5	1826.5	1633.3	77.0	1310.4	2.6	253.9	:	171.9	196.3	171.5	930.6	3628.8	797.5
1995	8805.5	224.8	110.6	1633.6	218.5	1823.3	1559.4	68.4	1380.1	2.7	278.4	83.4	176.1	198.3	173.3	874.6	3421.3	869.2
Under 25 years Males and females																		
1989	:	83.4	64.0	:	119.2	1053.4	688.8	60.2	1156.4	1.1	128.5	:	101.8	23.7	28.9	639.1	2411.0	365.8
1990	:	75.7	63.1	:	115.5	976.4	642.2	57.0	1046.0	0.9	113.8	:	90.7	24.1	33.1	637.3	2369.6	361.7
1991	4414.6	73.4	63.1	349.4	121.5	921.0	678.8	66.0	1018.5	0.8	109.3	:	73.8	47.8	53.8	799.6	2766.6	385.8
1992	4693.4	78.7	65.5	353.5	132.5	999.9	709.1	69.3	1003.8	1.0	113.0	:	80.2	75.3	84.2	892.2	2898.8	399.2
1993	5274.1	102.5	68.5	414.5	142.4	1231.5	797.2	70.9	1035.3	1.2	143.9	:	97.7	93.4	125.2	911.4	2717.0	455.0
1994	5221.5	114.1	54.5	427.9	143.2	1244.0	798.4	63.9	1042.6	1.6	148.9	:	112.5	87.7	120.6	826.9	2692.6	499.2
1995	4927.0	111.5	51.9	403.6	141.6	1148.6	713.7	53.7	1057.4	1.4	157.4	34.0	116.3	77.4	102.3	756.0	2590.3	539.2

Methodological notes

- The Eurostat unemployment rates are calculated according to the recommendations of the 13th International Conference of Labour Statisticians organised by the International Labour Office (ILO) in 1982. Unemployed persons are those persons aged 15 years and over who
 - are without work
 - are available to start work within the next two weeks
 - and have actively sought employment at some time during the previous four weeks.
- The unemployment estimates are based on the results of the European Community Labour Force Survey. It is carried out in the spring of each year. The use of the same definitions and concepts throughout the EU ensures comparability of the results between Member States.
- The **unemployment rate** is the number of unemployed as a percentage of the labour force (people living in collective households are excluded). The labour force is the total of the employed and the unemployed. Monthly estimates of the **number of unemployed** are derived by interpolating/extrapolating each year's Community Labour Force Survey results using the results of the national labour force surveys (see table A) and monthly indicators of unemployment (see table B). Monthly estimates of **employment** are obtained by
 - interpolating/extrapolating linearly the annual Community LFS results (Belgium, Denmark, Germany, Greece, France, Ireland, Luxembourg, Netherlands)
 - interpolating/extrapolating linearly the results of the national quarterly labour force surveys after adjustment to the Community LFS (Spain, Italy, Portugal, United Kingdom)
 - using the results of the national monthly labour force surveys (Finland, Sweden, USA, Japan).
- Estimates are made separately for males under 25, females under 25, males aged 25 years and over, and females aged 25 years and over. Totals are obtained by adding up these four basic categories.
- The figures for the four basic categories are seasonally adjusted using the multiplicative version of the X-11 method of the US Bureau of the Census. The reliability of the figures is adversely affected if deseasonalisation is performed on short series (such as Germany since the reunification) or where breaks occur (such as Sweden since 1993).
- From 1992, in some member States, the more restrictive application of the ILO guidelines introduces a break in the series. In such cases, no estimates are provided for the period before 1992.

Table A: Reference period of the last surveys used

Country	Community labour force surveys	National labour force surveys
Belgium	1995Q2	-
Denmark	1995Q2	-
Germany	1995Q2	-
Greece	1995Q2	-
Spain	1995Q2	1996Q2
France	1995Q2	-
Ireland	1995Q2	-
Italy	1995Q2	1996Q2
Luxembourg	1995Q2	-
Netherlands	1995Q2	-
Austria	1995Q2	1995Q1
Portugal	1995Q2	1996Q2
Finland	-	1996JUL
Sweden	-	1996JUL
United Kingdom	1995Q2	1996Q2

NB: 1994Q2 = 2nd quarter of 1994

Table B: Monthly indicators of unemployment.

BELGIUM: All persons in the following categories registered at employment offices: wholly unemployed persons in receipt of benefit, other unemployed persons compulsory registered and voluntarily registered persons without work.

Series provided by the Office National de l'Emploi.

DENMARK: Persons seeking full-time or part-time employment, whether or not they are members of an unemployment insurance fund.

Series provided by Danmarks Statistik.

GERMANY: Unemployed persons registered at public employment offices and seeking work as employees for at least 18 hours per week.

Series provided by the Bundesanstalt für Arbeit.

GREECE: No monthly indicator

SPAIN: Unemployed persons registered at public employment offices and seeking work as employees for 20 hours or more per week.

Series provided by the Ministerio de Trabajo y Seguridad Social.

FRANCE: Unemployed persons registered at the Agence de l'Emploi and seeking permanent full-time employment (demandeurs de catégorie 1).

Series provided by the Ministère du Travail, de l'Emploi et de la Formation Professionnelle.

IRELAND: Claimants for unemployment benefit, applicants for unemployment assistance and others seeking work who are registered with the employment services of the Department of Social Welfare. Excluded are persons seeking part-time employment.

Series provided by the Central Statistics Office.

ITALY: Persons without work, persons seeking their first job, persons working part-time for less than 20 hours per week and workers on a fixed-term contract of not more than 4 months in any 12-month period, who are looking for a different job.

Series provided by the Ministero del Lavoro e della Previdenza Sociale.

LUXEMBURG: Unemployed persons registered at employment offices and seeking work as employees for at least 20 hours per week.

Series provided by the Administration de l'Emploi.

NETHERLANDS: Persons registered at employment offices, between the ages of 16 and 64 years,

- who are without work or with work less than 12 hours a week and
- who are immediately available for paid employment for at least 12 hours a week or who found a job and will start working for at least 12 hours a week.

Series provided by the CBS.

AUSTRIA: No monthly indicator.

PORTUGAL: Persons registered at employment offices who are available for work within 30 days after registration.

Series provided by the Instituto de Emprego e Formação Profissional.

FINLAND: Number of unemployed in the monthly labour force survey.

SWEDEN: Number of unemployed in the monthly labour force survey.

UNITED KINGDOM: Persons seeking full-time work and claiming unemployment benefit because they are out of work.

Series provided by the Department of Employment.

Venta • Saig • Verkauf • Πωλήσεις • Sales • Vente • Vendita • Verkoop • Venda • Myynti • Försäljning

BELGIQUE / BELGIË

**Moniteur belge/
Belgisch Staatsblad**
Rue de Louvain 42/Louvainseweg 42
B-1000 Bruxelles/B-1000 Brussel
Tél. (02) 512 00 26
Fax (02) 511 01 84

Jean De Lannoy
Avenue du Roi 202/Koningslaan 202
B-1060 Bruxelles/B-1060 Brussel
Tél. (02) 538 51 69
Fax (02) 538 08 41

Autres distributeurs/
Overige verkooppunten:

**Librairie européenne/
Europese boekhandel**
Rue de la Loi 244/Wetstraat 244
B-1040 Bruxelles/B-1040 Brussel
Tél. (02) 231 04 35
Fax (02) 735 08 60

Document delivery:

Credoc
Rue de la Montagne 34/Bergstraat 34
Boîte 11/Bus 11
B-1000 Bruxelles/B-1000 Brussel
Tél. (02) 511 69 41
Fax (02) 513 31 95

DANMARK

J. H. Schultz Information A/S
Herstedvang 10-12
DK-2620 Albertslund
Tlf. 43 63 23 00
Fax (Sales) 43 63 19 69
Fax (Management) 43 63 19 49

DEUTSCHLAND

Bundesanzeiger Verlag
Postfach 10 05 34
D-50445 Köln
Tel. (02 21) 20 29-0
Fax (02 21) 2 02 92 78

GREECE/ΕΛΛΑΔΑ

G.C. Eleftheroudakis SA
International Bookstore
Nikis Street 4
GR-10563 Athens
Tel. (01) 322 63 23
Fax 323 98 21

ESPAÑA

Mundi-Prensa Libros, SA
Castelló, 37
E-28001 Madrid
Tel. (91) 431 33 99 (Libros)
431 32 22 (Suscripciones)
435 36 37 (Dirección)
Fax (91) 575 39 98

Boletín Oficial del Estado

Trafalgar, 27-29
E-28071 Madrid
Tel. (91) 538 22 95
Fax (91) 538 23 49

Sucursal:

Librería Internacional AEDOS

Consejo de Ciento, 391
E-08009 Barcelona
Tel. (93) 488 34 92
Fax (93) 487 76 59

**Librería de la Generalitat
de Catalunya**

Rambra dels Estudis, 118 (Palau Moja)
E-08002 Barcelona
Tel. (93) 302 68 35
Tel. (93) 302 64 62
Fax (93) 302 12 99

FRANCE

**Journal officiel
Service des publications
des Communautés européennes**
26, rue Desaix
F-75727 Paris Cedex 15
Tél. (1) 40 58 77 01/31
Fax (1) 40 58 77 00

IRELAND

Government Supplies Agency
4-5 Harcourt Road
Dublin 2
Tel. (1) 66 13 111
Fax (1) 47 52 760

ITALIA

Licosa SpA
Via Duca di Calabria 1/1
Casella postale 552
I-50125 Firenze
Tel. (055) 64 54 15
Fax 64 12 57

GRAND-DUCHÉ DE LUXEMBOURG

Messageries du livre
5, rue Raiffeisen
L-2411 Luxembourg
Tél. 40 10 20
Fax 49 06 61

NEDERLAND

SDU Servicecentrum Uitgeverijen
Postbus 20014
2500 EA 's-Gravenhage
Tel. (070) 37 89 880
Fax (070) 37 89 783

ÖSTERREICH

**Manz'sche Verlags-
und Universitätsbuchhandlung**
Kohlmarkt 16
A-1014 Wien
Tel. (1) 531 610
Fax (1) 531 61-181

Document delivery:

Wirtschaftskammer
Wiedner Hauptstraße
A-1045 Wien
Tel. (0222) 50105-4356
Fax (0222) 50206-297

PORTUGAL

Imprensa Nacional — Casa da Moeda, EP
Rua Marquês Sá da Bandeira, 16-A
P-1099 Lisboa Codex
Tel. (01) 353 03 99
Fax (01) 353 02 94/384 01 32

**Distribuidora de Livros
Bertrand, Ld.***

Grupo Bertrand, SA
Rua das Terras dos Vales, 4-A
Apartado 37
P-2700 Amadora Codex
Tel. (01) 49 59 050
Fax 49 60 255

SUOMI/FINLAND

Akateeminen Kirjakauppa
Akademiska Bokhandeln
Pohjoisesplanadi 39 / Norra esplanaden 39
PL / PB 128
FIN-00101 Helsinki / Helsingfors
Tel. (90) 121 4322
Fax (90) 121 44 35

SVERIGE

BTJ AB
Traktorvägen 11
Box 200
S-221 00 Lund
Tel. (046) 18 00 00
Fax (046) 18 01 25

UNITED KINGDOM

HMSO Books (Agency section)
HMSO Publications Centre
51 Nine Elms Lane
London SW8 5DR
Tel. (0171) 873 9090
Fax (0171) 873 8463

ICELAND

**BOKABUD
LARUSAR BLÖNDAL**
Skólavörðustíg, 2
IS-101 Reykjavík
Tel. 551 56 50
Fax 552 55 60

NORGE

NIC Info a/s
Boks 6512 Etterstad
0606 Oslo
Tel. (22) 57 33 34
Fax (22) 68 19 01

SCHWEIZ/SUISSE/SVIZZERA

OSEC
Stampfenbachstraße 85
CH-8035 Zürich
Tel. (01) 365 54 49
Fax (01) 365 54 11

BÄLGARIJA

Europress Klassica BK Ltd
66, bd Vitosha
BG-1463 Sofia
Tel./Fax (2) 52 74 75

ČESKÁ REPUBLIKA

NIS ČR
Havelkova 22
CZ-130 00 Praha 3
Tel./Fax (2) 24 22 94 33

HRVATSKA

Mediatrade
P. Hatza 1
HR-4100 Zagreb
Tel./Fax (041) 43 03 92

MAGYARORSZÁG

Euro-Info-Service
Európá Ház
Margitsziget
H-1138 Budapest
Tel./Fax (1) 111 60 61, (1) 111 62 16

POLSKA

Business Foundation
ul. Krucza 38/42
PL-00-512 Warszawa
Tel. (2) 621 99 93, 628 28 82
International Fax&Phone (0-39) 12 00 77

ROMÂNIA

Euromedia
65, Strada Dionisie Lupu
RO-70184 Bucuresti
Tel./Fax 1-31 29 646

RUSSIA

CCEC
9,60-Ietiya Oktyabrya Avenue
117312 Moscow
Tel./Fax (095) 135 52 27

SLOVAKIA

**Slovak Technical
Library**
Nám. slobody 19
SLO-812 23 Bratislava 1
Tel. (7) 52 204 52
Fax (7) 52 957 85

CYPRUS

**Cyprus Chamber of Commerce
and Industry**
Chamber Building
38 Grivas Dhigenis Ave
3 Deligiorgis Street
PO Box 1455
Nicosia
Tel. (2) 44 95 00, 46 23 12
Fax (2) 36 10 44

MALTA

Miller Distributors Ltd
PO Box 25
Malta International Airport LQA 05 Malta
Tel. 66 44 88
Fax 67 67 99

TÜRKIYE

Pres AS
Dünya Infotel
TR-80050 Tünel-Istanbul
Tel. (1) 251 91 90/251 96 96
Fax (1) 251 91 97

ISRAEL

Roy International
17, Shimon Hatarssi Street
P.O.B. 13056
61130 Tel Aviv
Tel. (3) 546 14 23
Fax (3) 546 14 42

Sub-agent for the Palestinian Authority:

INDEX Information Services
PO Box 19502
Jerusalem
Tel. (2) 27 16 34
Fax (2) 27 12 19

EGYPT/
MIDDLE EAST

Middle East Observer
41 Sherif St.
Cairo
Tel/Fax (2) 393 97 32

UNITED STATES OF AMERICA/
CANADA

UNIPUB
4611-F Assembly Drive
Lanham, MD 20706-4391
Tel. Toll Free (800) 274 48 88
Fax (301) 459 00 56

CANADA

Subscriptions only
Uniquement abonnements

Renouf Publishing Co. Ltd
1294 Algoma Road
Ottawa, Ontario K1B 3W8
Tel. (613) 741 43 33
Fax (613) 741 54 39

AUSTRALIA

Hunter Publications
58A Gipps Street
Collingwood
Victoria 3066
Tel. (3) 9417 53 61
Fax (3) 9419 71 54

JAPAN

Procurement Services Int. (PSI-Japan)

Kyoku Dome Postal Code 102
Tokyo Kojimachi Post Office
Tel. (03) 32 34 69 21
Fax (03) 32 34 69 15

Sub-agent:

**Kinokuniya Company Ltd
Journal Department**
PO Box 55 Chitose
Tokyo 156
Tel. (03) 34 39-0124

SOUTH and EAST ASIA

Legal Library Services Ltd
Orchard
PO Box 0523
Singapore 9123
Tel. 243 24 98
Fax 243 24 79

SOUTH AFRICA

Safto
5th Floor, Export House
Cnr Maude & West Streets
Sandton 2146
Tel. (011) 883-3737
Fax (011) 883-6569

ANDERE LÄNDER
OTHER COUNTRIES
AUTRES PAYS

**Office des publications officielles
des Communautés européennes**
2, rue Mercier
L-2985 Luxembourg
Tél. 29 29-1
Télex PUBOF LU 1324 b
Fax 48 85 73, 48 68 17

Price (excl. VAT) in Luxembourg: Single copy ECU 7 • Subscription ECU 62



OFICINA DE PUBLICACIONES OFICIALES DE LAS COMUNIDADES EUROPEAS
KONTORET FOR DE EUROPÆISKE FÆLLESSKABERS OFFICIELLE PUBLIKATIONER
AMT FÜR AMTLICHE VERÖFFENTLICHUNGEN DER EUROPÄISCHEN GEMEINSCHAFTEN
ΥΠΗΡΕΣΙΑ ΕΠΙΣΗΜΩΝ ΕΚΔΟΣΕΩΝ ΤΩΝ ΕΥΡΩΠΑΪΚΩΝ ΚΟΙΝΟΤΗΤΩΝ
OFFICE FOR OFFICIAL PUBLICATIONS OF THE EUROPEAN COMMUNITIES
OFFICE DES PUBLICATIONS OFFICIELLES DES COMMUNAUTÉS EUROPÉENNES
UFFICIO DELLE PUBBLICAZIONI UFFICIALI DELLE COMUNITÀ EUROPEE
BUREAU VOOR OFFICIËLE PUBLIKATIES DER EUROPESE GEMEENSCHAPPEN
SERVIÇO DAS PUBLICAÇÕES OFICIAIS DAS COMUNIDADES EUROPEIAS

L - 2985 Luxembourg

Catalogue number: CA-BH-96-009-EN-C