

### Gas prices for EU households on 1 July 1994: relative stability

These comments are based on prices expressed in purchasing power standard (PPS). Tables and graphics also give the prices in ECU, which allows comparison in both units.


A study of the variations in VAT-excluded prices from 1 January to 1 July 1994 reveals that:

- Prices for the United Kingdom, Ireland and most German towns remained unchanged. However in Dortmund, there was a drop in prices of -2.5% (D<sub>1</sub>\*) to -6.6% (D<sub>4</sub>) and in Stuttgart there was a 2 to 3% fall.
- In France, the price reduction was between -1.3 and -2.4%, in the Netherlands, between -1.4 and -2.7%.
- In Belgium, the reduction was not as strong, it was between -0.5% for D<sub>1</sub> and -1.9% for D<sub>4</sub>.
- In Italy, prices for D<sub>1</sub> and D<sub>2</sub> increased by 0.3%. Those of D<sub>3</sub>, D<sub>3-B</sub> and D<sub>4</sub> fell by about -1%, except in Milan where D<sub>1</sub> (6.9%), D<sub>2</sub> (4.5%) and D<sub>4</sub> (4.2%) recorded stronger rises.
- In Spain, prices increased from 4% for D<sub>4</sub> to 5.2% for D<sub>1</sub>.
- In Luxembourg, the rise was between 0.4% for D<sub>1</sub> and 0.9% for D<sub>4</sub>.

\* see table below for definition.

\*\*\*\*\*

Five household standard consumers, coded D<sub>1</sub> to D<sub>4</sub>, were chosen:


Annual consumption						
	D <sub>1</sub>	8.37	GJ	(i.e.	2 326	kWh)
	D <sub>2</sub> <sup>(1)</sup>	16.74	GJ	(i.e.	4 652	kWh)
	D <sub>3</sub>	83.70	GJ	(i.e.	23 260	kWh)
	D <sub>3b</sub>	125.60	GJ	(i.e.	34 890	kWh)
	D <sub>4</sub>	1047.00	GJ	(i.e.	290 750	kWh)

(1) For the United Kingdom there is an additional standard consumer, i.e. 33.49 GJ (9 300 kWh or 8 Gcal).


Prices for the standard consumers are given in national currencies, PPS (purchasing power standard as at 12 October for 1994) and in ECU (average value for July 1994).

B	DK	D	GR	E	F	IRL	I	L	NL	P	UK
BFR	DKR	DM	DRA	PTA	FR	IRL	LIT	LFR	HKL	ESC	UKL
1 PPS											
40.77	9.21	2.25	253.16	126.90	6.73	0.67	1666.67	41.77	2.24	150.83	0.70
1 ECU =											
39.52	7.53	1.92	289.85	158.23	6.57	0.80	1923.08	39.52	2.15	196.85	0.79

## NATURGASPREISE FUER HAUSHALTE / NATURAL GAS PRICES FOR HOUSEHOLDS / PRIX DU GAZ NATUREL POUR USAGES DOMESTIQUES

JULI 01 JULY 1994 JUILLET	NATIONALE WAEHRUNG NATIONAL CURRENCY / GJ MONNAIE NATIONALE			KKS	PPS	SPA / GJ	ECUS / GJ			
	STEUERN INBEGR. WITH TAXES COMPRISES	OHNE MWST. VAT EXCL. HORS TVA	OHNE STEUERN TAXES EXCL. HORS TAXES				STEUERN INBEGR. WITH TAXES COMPRISES	OHNE MWST. VAT EXCL. HORS TVA	OHNE STEUERN TAXES EXCL. HORS TAXES	
VERBRAUCHER-TYPEN	STEUERN	OHNE	OHNE	STEUERN	OHNE	OHNE	STEUERN	OHNE	OHNE	
STANDARD CONSUMERS	INBEGR.	MWST.	STEUERN	INBEGR.	MWST.	STEUERN	INBEGR.	MWST.	STEUERN	
CONSUMMATEURS TYPE	WITH	VAT	TAXES	WITH	VAT	TAXES	WITH	VAT	TAXES	
	TAXES	EXCL.	EXCL.	TAXES	EXCL.	EXCL.	TAXES	EXCL.	EXCL.	
	TAXES	HORS	HORS	TAXES	HORS	HORS	TAXES	HORS	HORS	
	COMPRISES	TVA	TAXES	COMPRISES	TVA	TAXES	COMPRISES	TVA	TAXES	
BELGIQUE (BFR)										
							BRUXELLES			
D1	636.2	528.0	514.3	15.61	12.95	12.62	16.10	13.36	13.01	
D2	586.5	486.7	473.0	14.39	11.94	11.60	14.84	12.31	11.97	
D3	342.5	284.2	270.5	8.40	6.97	6.64	8.67	7.19	6.84	
D3-B	326.2	270.7	257.0	8.00	6.64	6.30	8.25	6.85	6.50	
D4	272.4	226.0	212.4	6.68	5.54	5.21	6.89	5.72	5.37	
DEUTSCHLAND (DM)										
							DUESSELDORF			
D1	36.43	31.68	30.68	16.19	14.08	13.64	18.99	16.52	15.99	
D2	27.49	23.90	22.90	12.22	10.62	10.18	14.33	12.46	11.94	
D3	17.78	15.46	14.46	7.90	6.87	6.43	9.27	8.06	7.54	
D3-B	16.75	14.57	13.57	7.44	6.48	6.03	8.73	7.60	7.07	
D4	15.44	13.42	12.42	6.86	5.96	5.52	8.05	7.00	6.47	
HAMBURG										
D1	37.35	32.48	31.48	16.60	14.44	13.99	19.47	16.93	16.41	
D2	30.06	26.14	25.14	13.36	11.62	11.17	15.67	13.63	13.11	
D3	17.06	14.83	13.83	7.58	6.59	6.15	8.89	7.73	7.21	
D3-B	16.40	14.26	13.26	7.29	6.34	5.89	8.55	7.43	6.91	
D4	14.02	12.19	11.19	6.23	5.42	4.97	7.31	6.36	5.83	
HANNOVER										
D1	33.19	28.86	27.86	14.75	12.83	12.38	17.30	15.05	14.52	
D2	26.18	22.77	21.77	11.64	10.12	9.68	13.65	11.87	11.35	
D3	16.83	14.64	13.64	7.48	6.51	6.06	8.77	7.63	7.11	
D3-B	15.97	13.89	12.89	7.10	6.17	5.73	8.33	7.24	6.72	
D4	14.40	12.53	11.53	6.40	5.57	5.12	7.51	6.53	6.01	
DORTMUND										
D1	37.78	32.85	31.85	16.79	14.60	14.16	19.70	17.13	16.60	
D2	26.24	22.82	21.82	11.66	10.14	9.70	13.68	11.90	11.38	
D3	15.76	13.70	12.70	7.00	6.09	5.64	8.22	7.14	6.62	
D3-B	14.52	12.63	11.63	6.45	5.61	5.17	7.57	6.58	6.06	
D4	13.60	11.83	10.83	6.04	5.26	4.81	7.09	6.17	5.65	
FRANKFURT/M										
D1	36.98	32.16	31.16	16.44	14.29	13.85	19.28	16.77	16.24	
D2	28.13	24.46	23.46	12.50	10.87	10.43	14.67	12.75	12.23	
D3	16.60	14.44	13.44	7.38	6.42	5.97	8.65	7.53	7.01	
D3-B	15.01	13.05	12.05	6.67	5.80	5.36	7.83	6.80	6.28	
D4	14.12	12.28	11.28	6.28	5.46	5.01	7.36	6.40	5.88	
STUTT GART										
D1	39.72	34.54	33.54	17.65	15.35	14.91	20.71	18.01	17.49	
D2	32.96	28.66	27.66	14.65	12.74	12.29	17.18	14.94	14.42	
D3	19.38	16.85	15.85	8.61	7.49	7.04	10.10	8.78	8.26	
D3-B	17.71	15.40	14.40	7.87	6.84	6.40	9.23	8.03	7.51	
D4	14.76	12.83	11.83	6.56	5.70	5.26	7.69	6.69	6.17	


TURGASPREISE FUER HAUSHALTE / NATURAL GAS PRICES FOR HOUSEHOLDS / PRIX DU GAZ NATUREL POUR USAGES DOMESTIQUES

JULI 01 JULY 1994 JUILLET	NATIONALE WAEHRUNG NATIONAL CURRENCY / GJ MONNAIE NATIONALE			KKS	PPS	SPA / GJ	ECUS / GJ			
	STEUERN INBEGR. WITH TAXES COMPRISES	OHNE MWST. VAT EXCL. TVA	OHNE STEUERN TAXES EXCL. TAXES							
VERBRAUCHER-TYPEN	STEUERN INBEGR.	OHNE MWST.	OHNE STEUERN	STEUERN INBEGR.	OHNE MWST.	OHNE STEUERN	STEUERN INBEGR.	OHNE MWST.	OHNE STEUERN	
STANDARD CONSUMERS	WITH TAXES	VAT EXCL.	TAXES EXCL.	WITH TAXES	VAT EXCL.	TAXES EXCL.	WITH TAXES	VAT EXCL.	TAXES EXCL.	
CONSUMMATEURS TYPE	TAXES COMPRISES	HORS TVA	HORS TAXES	TAXES COMPRISES	HORS TVA	HORS TAXES	TAXES COMPRISES	HORS TVA	HORS TAXES	
DEUTSCHLAND (DM)										
MUENCHEN										
D1	31.82	27.67	26.67	14.14	12.30	11.85	16.59	14.43	13.90	
D2	25.23	21.94	20.94	11.21	9.75	9.31	13.15	11.44	10.92	
D3	18.91	16.44	15.44	8.40	7.31	6.86	9.86	8.57	8.05	
D3-B	17.26	15.01	14.01	7.67	6.67	6.23	9.00	7.83	7.30	
D4	14.45	12.57	11.57	6.42	5.59	5.14	7.53	6.55	6.03	
WESER-EMS										
D1	30.83	26.81	25.81	13.70	11.92	11.47	16.07	13.98	13.46	
D2	23.22	20.19	19.19	10.32	8.97	8.53	12.11	10.53	10.00	
D3	14.62	12.72	11.72	6.50	5.65	5.21	7.62	6.63	6.11	
D3-B	13.69	11.90	10.90	6.08	5.29	4.84	7.14	6.20	5.68	
D4	12.04	10.47	9.47	5.35	4.65	4.21	6.28	5.46	4.94	
DRESDEN										
D1	43.40	37.74	36.74	19.29	16.77	16.33	22.63	19.67	19.15	
D2	31.99	27.82	26.82	14.22	12.36	11.92	16.68	14.50	13.98	
D3	18.98	16.51	15.51	8.44	7.34	6.89	9.89	8.61	8.09	
D3-B	17.55	15.26	14.26	7.80	6.78	6.34	9.15	7.96	7.43	
D4	15.03	13.07	12.07	6.68	5.81	5.36	7.84	6.81	6.29	
BERLIN										
D1	35.79	31.12	30.12	15.91	13.83	13.39	18.66	16.22	15.70	
D2	35.79	31.12	30.12	15.91	13.83	13.39	18.66	16.22	15.70	
D3	21.09	18.34	17.34	9.37	8.15	7.71	10.99	9.56	9.04	
D3-B	21.08	18.33	17.33	9.37	8.15	7.70	10.99	9.56	9.03	
D4	18.52	16.11	15.11	8.23	7.16	6.72	9.66	8.40	7.88	
ESPANA (PTA)										
MADRID (1)										
D1	2364.6	2056.5	2056.5	18.63	16.21	16.21	14.94	13.00	13.00	
D2	2082.7	1810.5	1810.5	16.41	14.27	14.27	13.16	11.44	11.44	
D3	1636.1	1423.5	1423.5	12.89	11.22	11.22	10.34	9.00	9.00	
D3-B	1593.1	1385.3	1385.3	12.55	10.92	10.92	10.07	8.76	8.76	
D4	1117.8	972.1	972.1	8.81	7.66	7.66	7.06	6.14	6.14	
FRANCE (FF)										
PARIS (2)										
D1	96.53	83.98	83.98	14.34	12.48	12.48	14.69	12.78	12.78	
D2	84.20	72.29	72.29	12.51	10.74	10.74	12.81	11.00	11.00	
D3	56.32	48.43	48.43	8.37	7.20	7.20	8.57	7.37	7.37	
D3-B	52.84	45.44	45.44	7.85	6.75	6.75	8.04	6.91	6.91	
D4	46.14	39.36	39.36	6.86	5.85	5.85	7.02	5.99	5.99	
STRASBOURG										
D1	128.61	110.61	110.61	19.11	16.44	16.44	19.57	16.83	16.83	
D2	105.80	90.29	90.29	15.72	13.42	13.42	16.10	13.74	13.74	
D3	61.74	52.72	52.72	9.17	7.83	7.83	9.39	8.02	8.02	
D3-B	59.60	50.70	50.70	8.86	7.53	7.53	9.07	7.71	7.71	
D4	52.77	44.60	44.60	7.84	6.63	6.63	8.03	6.78	6.78	


1) PREISE AUCH GUELTIG FUER / PRICES ALSO VALID FOR / PRIX EGALEMENT VALABLES POUR : BARCELONA, VALENCIA  
UND FUER ORTSGAS / AND FOR GASWORKS GAS / ET POUR GAZ D'USINE : MADRID, VALENCIA

2) PREISE ZONE 1, UNTER ANDEREM AUCH GUELTIG FUER / PRICES ZONE 1, ALSO VALID FOR/  
PRIX TARIFS ZONE 1, EGALEMENT VALABLES POUR, ENTRE AUTRES : LILLE, LYON, TOULOUSE, MARSEILLE

NATURGASPREISE FUER HAUSHALTE / NATURAL GAS PRICES FOR HOUSEHOLDS / PRIX DU GAZ NATUREL POUR USAGES DOMESTIQUES

JULI 01 JULY 1994 JUILLET	NATIONALE WAERUNG NATIONAL CURRENCY / GJ MONNAIE NATIONALE			KKS	PPS	SPA / GJ	ECUS / GJ			
	STEUERN INBEGR. WITH TAXES COMPRISES	OHNE MWST. VAT EXCL. HORS TVA	OHNE STEUERN TAXES EXCL. HORS TAXES				STEUERN INBEGR. WITH TAXES COMPRISES	OHNE MWST. VAT EXCL. HORS TVA	OHNE STEUERN TAXES EXCL. HORS TAXES	
VERBRAUCHER-TYPEN STANDARD CONSUMERS CONSOMMATEURS TYPE										
IRELAND (IRL) <span style="float:right">DUBLIN</span>										
D1	15.72	13.97	13.97	23.43	20.82	20.82	19.65	17.46	17.46	
D2	13.41	11.92	11.92	19.99	17.76	17.76	16.76	14.90	14.90	
D3	6.40	5.69	5.69	9.54	8.48	8.48	8.00	7.11	7.11	
D3-B	6.40	5.69	5.69	9.54	8.48	8.48	8.00	7.11	7.11	
D4	6.40	5.69	5.69	9.54	8.48	8.48	8.00	7.11	7.11	
ITALIA (LIT) <span style="float:right">MILANO</span>										
D1	20734	19022	17466	12.44	11.41	10.48	10.78	9.89	9.08	
D2	18427	16905	15346	11.06	10.14	9.21	9.58	8.79	7.98	
D3	27530	23135	15731	16.52	13.88	9.44	14.32	12.03	8.18	
D3-B	27462	23077	15493	16.48	13.85	9.30	14.28	12.00	8.06	
D4	27236	22887	14940	16.34	13.73	8.96	14.16	11.90	7.77	
ITALIA (LIT) <span style="float:right">TORINO</span>										
D1	19886	18244	16296	11.93	10.95	9.78	10.34	9.49	8.47	
D2	17542	16094	14146	10.53	9.66	8.49	9.12	8.37	7.36	
D3	25681	21581	13135	15.41	12.95	7.88	13.35	11.22	6.83	
D3-B	25611	21522	12896	15.37	12.91	7.74	13.32	11.19	6.71	
D4	26693	22431	13445	16.02	13.46	8.07	13.88	11.66	6.99	
GENOVA										
D1	22490	20633	18685	13.49	12.38	11.21	11.69	10.73	9.72	
D2	20145	18482	16534	12.09	11.09	9.92	10.48	9.61	8.60	
D3	27022	22708	14262	16.21	13.62	8.56	14.05	11.81	7.42	
D3-B	27118	22789	13802	16.27	13.67	8.28	14.10	11.85	7.18	
D4	27118	22789	13802	16.27	13.67	8.28	14.10	11.85	7.18	
ROMA										
D1	22066	20244	18686	13.24	12.15	11.21	11.47	10.53	9.72	
D2	19722	18094	16535	11.83	10.86	9.92	10.26	9.41	8.60	
D3	27516	23123	15716	16.51	13.87	9.43	14.31	12.02	8.17	
D3-B	27446	23064	15477	16.47	13.84	9.29	14.27	11.99	8.05	
D4	30450	25588	17641	18.27	15.35	10.58	15.83	13.31	9.17	
NAPOLI										
D1	24587	22557	21076	14.75	13.53	12.65	12.79	11.73	10.96	
D2	22242	20405	18925	13.35	12.24	11.36	11.57	10.61	9.84	
D3	28840	26458	20495	17.30	15.87	12.30	15.00	13.76	10.66	
D3-B	28788	26411	20254	17.27	15.85	12.15	14.97	13.73	10.53	
D4	29040	26642	20097	17.42	15.99	12.06	15.10	13.85	10.45	
LUXEMBOURG (LFR) <span style="float:right">LUXEMBOURG-VILLE</span>										
D1	497.96	469.77	469.77	11.92	11.25	11.25	12.60	11.89	11.89	
D2	425.77	401.67	401.67	10.19	9.62	9.62	10.77	10.16	10.16	
D3	218.33	205.97	205.97	5.23	4.93	4.93	5.52	5.21	5.21	
D3-B	213.43	201.35	201.35	5.11	4.82	4.82	5.40	5.09	5.09	
D4	204.60	193.02	193.02	4.90	4.62	4.62	5.18	4.88	4.88	

NATURGASPREISE FUER HAUSHALTE / NATURAL GAS PRICES FOR HOUSEHOLDS / PRIX DU GAZ NATUREL POUR USAGES DOMESTIQUES

JULI 01 JULY 1994 JUILLET	NATIONALE WAEHRUNG NATIONAL CURRENCY / GJ MONNAIE NATIONALE			KKS	PPS	SPA / GJ	ECUS / GJ			
	STEUERN INBEGR. WITH TAXES COMPRISES	OHNE MWST. VAT EXCL. HORS TVA	OHNE STEUERN TAXES EXCL. HORS TAXES				STEUERN INBEGR. WITH TAXES COMPRISES	OHNE MWST. VAT EXCL. HORS TVA	OHNE STEUERN TAXES EXCL. HORS TAXES	
VERBRAUCHER-TYPEN	STEUERN	OHNE	OHNE	STEUERN	OHNE	OHNE	STEUERN	OHNE	OHNE	
STANDARD CONSUMERS	INBEGR.	MWST.	STEUERN	INBEGR.	MWST.	STEUERN	INBEGR.	MWST.	STEUERN	
CONSOMMATEURS TYPE	WITH	VAT	TAXES	WITH	VAT	TAXES	WITH	VAT	TAXES	
	TAXES	EXCL.	EXCL.	TAXES	EXCL.	EXCL.	TAXES	EXCL.	EXCL.	
	TAXES	HORS	HORS	TAXES	HORS	HORS	TAXES	HORS	HORS	
	COMPRISES	TVA	TAXES	COMPRISES	TVA	TAXES	COMPRISES	TVA	TAXES	

NEDERLAND (HFL)

ROTTERDAM

D1	27.91	23.75	23.16	12.46	10.60	10.34	12.97	11.04	10.76
D2	21.00	17.87	17.28	9.38	7.98	7.71	9.76	8.31	8.03
D3	15.47	13.17	12.58	6.91	5.88	5.62	7.19	6.12	5.85
D3-B	15.01	12.78	12.19	6.70	5.71	5.44	6.98	5.94	5.67
D4	14.20	12.09	11.50	6.34	5.40	5.13	6.60	5.62	5.35

UNITED KINGDOM (UKL) (1)

LONDON (2)

D1	8.17	7.57	7.57	11.72	10.86	10.86	10.33	9.58	9.58
D2	6.81	6.30	6.30	9.77	9.04	9.04	8.61	7.97	7.97
D3	4.91	4.54	4.54	7.04	6.51	6.51	6.21	5.74	5.74
D3-B	4.75	4.40	4.40	6.81	6.31	6.31	6.01	5.57	5.57
D2-B	5.62	5.20	5.20	8.06	7.46	7.46	7.11	6.58	6.58


(1) EXTRA STANDARD ABNEHMER "D2-B" NUR FUER VEREINIGTES KOENIGREICH

EXTRA STANDARD CONSUMER "D2-B" FOR UNITED KINGDOM ONLY

CONSOMMATEUR TYPE SUPPLEMENTAIRE "D2-B" ; N'EXISTE QU'AU ROYAUME-UNI

(2) PREISE AUCH GUELTIG FUER / PRICES ALSO VALID FOR / PRIX EGALEMENT VALABLES POUR : LEEDS, BIRMINGHAM

ORTSGASPREISE FUER HAUSHALTE / GASWORKS GAS PRICES FOR HOUSEHOLDS / PRIX DU GAZ D'USINE POUR USAGES DOMESTIQUES

JULI 01 JULY 1994 JUILLET	NATIONALE WAEHRUNG NATIONAL CURRENCY / GJ MONNAIE NATIONALE			KKS	PPS	SPA / GJ	ECUS / GJ			
	STEUERN INBEGR. WITH TAXES COMPRISES	OHNE MWST. VAT EXCL. HORS TVA	OHNE STEUERN TAXES EXCL. HORS TAXES				STEUERN INBEGR. WITH TAXES COMPRISES	OHNE MWST. VAT EXCL. HORS TVA	OHNE STEUERN TAXES EXCL. HORS TAXES	
VERBRAUCHER-TYPEN	STEUERN	OHNE	OHNE	STEUERN	OHNE	OHNE	STEUERN	OHNE	OHNE	
STANDARD CONSUMERS	INBEGR.	MWST.	STEUERN	INBEGR.	MWST.	STEUERN	INBEGR.	MWST.	STEUERN	
CONSOMMATEURS TYPE	WITH	VAT	TAXES	WITH	VAT	TAXES	WITH	VAT	TAXES	
	TAXES	EXCL.	EXCL.	TAXES	EXCL.	EXCL.	TAXES	EXCL.	EXCL.	
	TAXES	HORS	HORS	TAXES	HORS	HORS	TAXES	HORS	HORS	
	COMPRISES	TVA	TAXES	COMPRISES	TVA	TAXES	COMPRISES	TVA	TAXES	

DANMARK (DKR)

KOBENHAVN

D1	212.83	170.26	170.26	23.11	18.49	18.49	28.24	22.59	22.59
D2	200.91	160.73	160.73	21.81	17.45	17.45	26.66	21.33	21.33
D3	150.81	120.65	120.65	16.37	13.10	13.10	20.01	16.01	16.01
D3-B	141.46	113.17	113.17	15.36	12.29	12.29	18.77	15.02	15.02
D4	116.00	92.80	92.80	12.60	10.08	10.08	15.39	12.31	12.31



PORTUGAL (ESC)

LISBOA

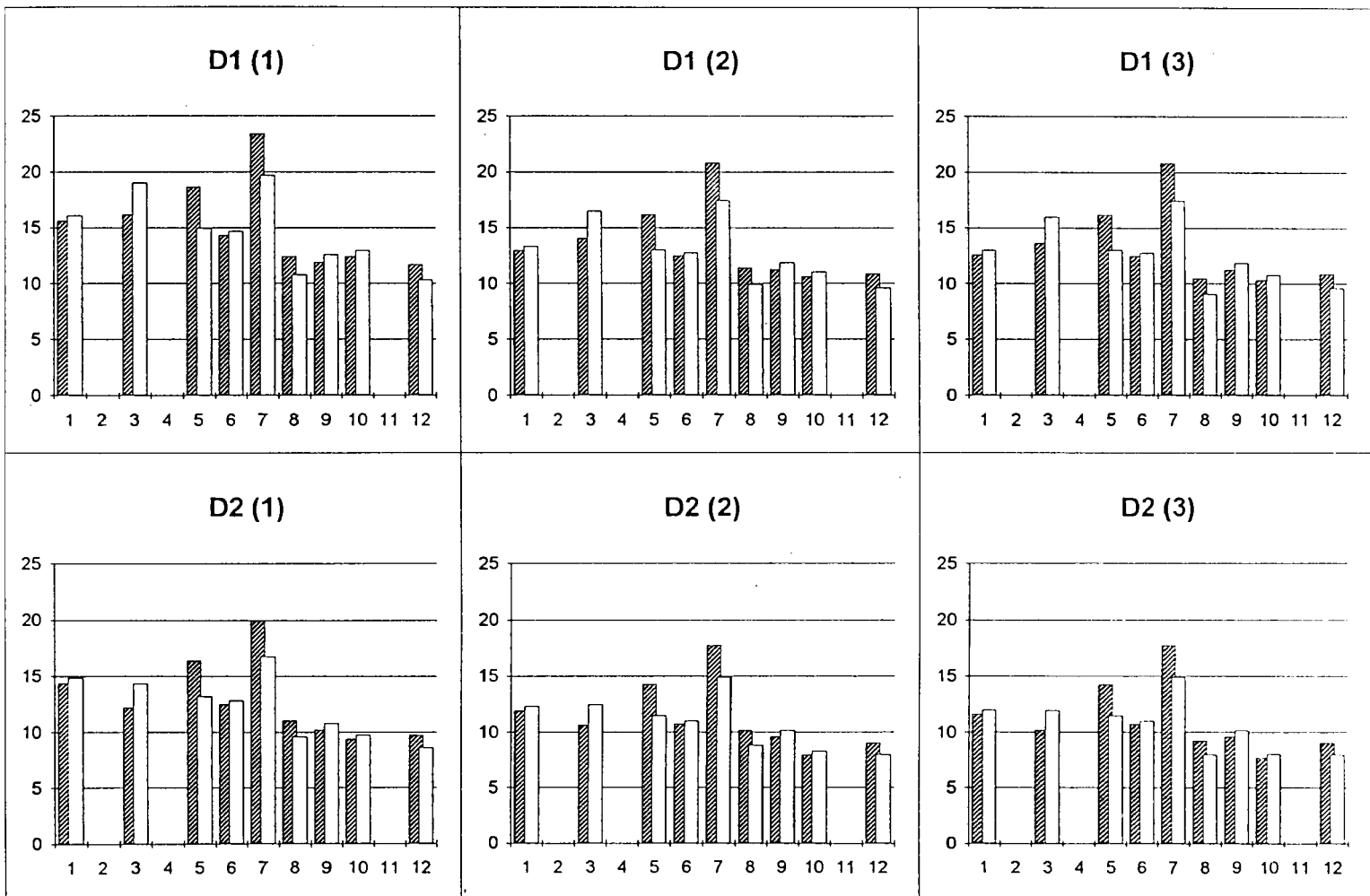
D1	2909.00	2770.00	2770.00	19.29	18.37	18.37	14.78	14.07	14.07
D2	2909.00	2770.00	2770.00	19.29	18.37	18.37	14.78	14.07	14.07
D3	2909.00	2770.00	2770.00	19.29	18.37	18.37	14.78	14.07	14.07
D3-B	2909.00	2770.00	2770.00	19.29	18.37	18.37	14.78	14.07	14.07
D4									

NATURGASPREISE FUER HAUSHALTE  
 GAS PRICES FOR HOUSEHOLDS  
 PRIX DU GAZ POUR USAGES DOMESTIQUES

1	B	BRUXELLES	9	L	LUXEMBOURG
2	DK	-	10	NL	ROTTERDAM
3	D	DUESSELDORF	11	P	-
4	GR	-	12	UK	LONDON
5	E	MADRID			
6	F	PARIS			
7	IRL	DUBLIN			
8	I	MILANO			

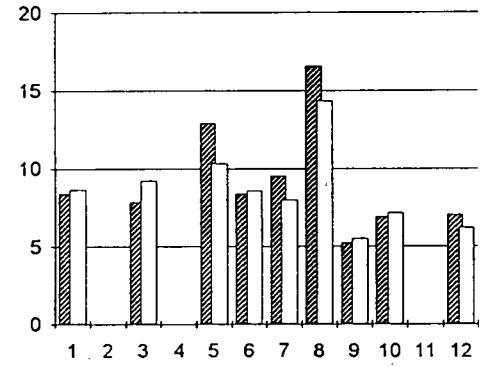
 SPA / GJ  
 ECU / GJ

- (1) STEUERN INBEGR./ TAXES INCL./ TAXES COMPRISES
- (2) OHNE MWST./ VAT EXCL./ HORS TVA
- (3) OHNE STEUERN/TAXES EXCL./ HORS TAXES

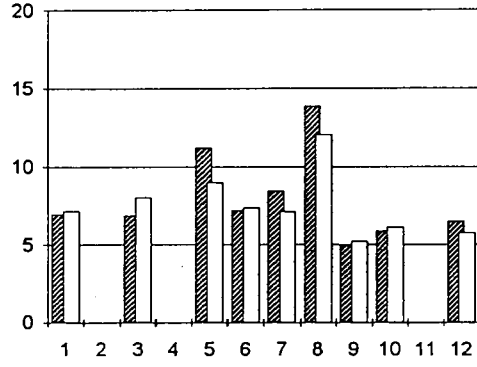




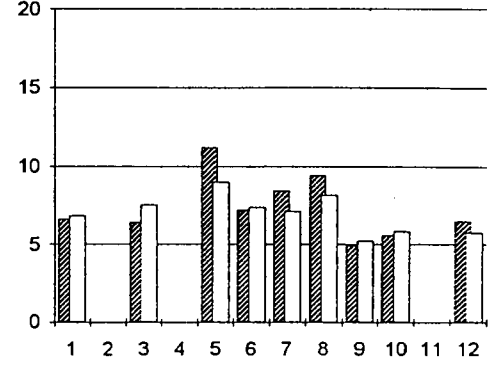
D3 (1)



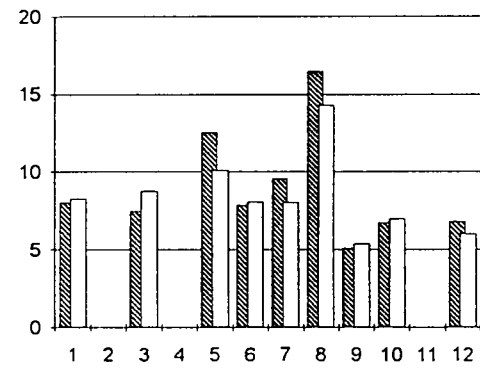
D3 (2)



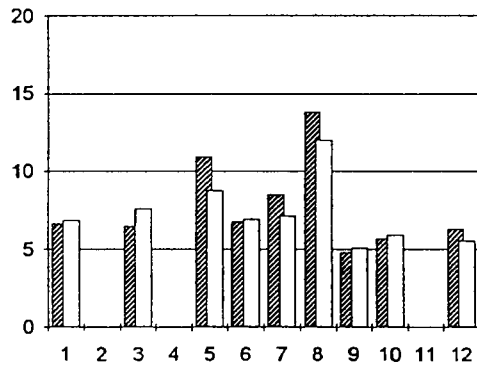
D3 (3)



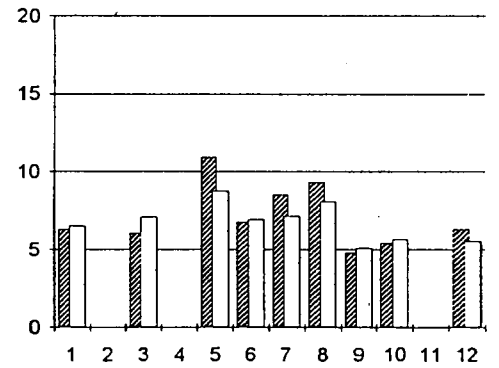
D3-B (1)



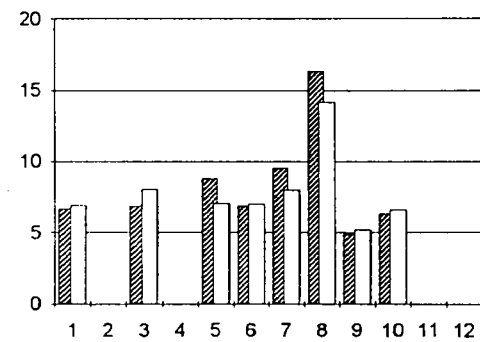
D3-B (2)



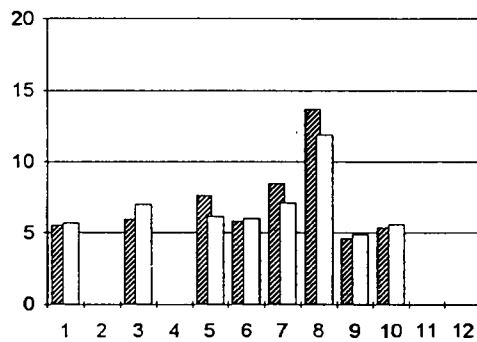
D3-B (3)



D4 (1)



D4 (2)



D4 (3)

