

Gas prices for EU industry on 1 July 1994: downward trend

These comments are based on prices expressed in purchasing power standard (PPS). Tables and graphics also give the prices in ECU, which allows comparison in both units.

A study of the variations in VAT-excluded prices from 1 January to 1 July 1994 reveals that:

- Prices in Belgium went down by -1.6% for I₁* and -4.1% for I₄.
- In Germany, prices for I₁ remained stable, except in Hamburg and Dortmund. Prices for other standard consumers decreased by -0.7% to -7.6% according to city.
- The only rise in prices was recorded in Dresden for I₁ (0.8%) and I₄₋₁ (2.2%).
- In the United Kingdom, falls in prices were very uneven: in London and Leeds the biggest falls affected I₁ and I₂, whereas in Birmingham, they affect I₃₋₁ (-8.1%) and I₃₋₂ (-7.5%). However, the figures include changes resulting from additional supplying companies entering the market.
- In Italy, the situation was very varied: prices for I₁ increased in Rome (9.6%), Milan (5.1%), Turin (1.3%) and Naples (0.6%), whereas, irrespective of area, prices for I₃₋₁ and I₃₋₂ fell by -2.1% and those for I₄₋₁ and I₄₋₂ by -1.6%.
- In Luxembourg, prices for I₁, I₂ and I₃₋₁ increased by about 1%, and those of I₃₋₂ were reduced by -5.6%, I₄₋₁ and I₄₋₂ by -1.5%.
- In the Netherlands, the situation was reversed: prices for I₁ and I₂ decreased while those of I₃ (0.7%), I₄ (2.1%) and I₅ (5.9%) increased.
- In Ireland, prices showed no change.

* see table below for definition.

Manuscript completed on =15.11.1994

For further information please contact:
Eurostat, L-2920 Luxembourg, tel. 4301-32040

Fax: 4301-34771


Price (excl. VAT) in Luxembourg: Subscription ECU 227

Catalogue number: CA-NL-94-035-EN-C

Council Directive No 90/377/EEC of 29 June 1990 lays down a Community procedure to improve the transparency of gas and electricity prices charged to industrial end-users.


In accordance with Article 1.1, this note sets out the prices for standard consumers in force as at 1st July 1994.

Seven standard industrial users, coded I₁ to I₅ were chosen :

		Annual consumption				Modulation
I ₁	418.60	GJ (i.e	116 300	kWh)	no load factor laid down	
I ₂	4 186	GJ (i.e	1 163 000	KWh)	200 days	
I ₃₋₁	41 860	GJ (i.e	11.63	GWh)	200 days 1 600 hours	
I ₃₋₂	41 860	GJ (i.e	11.63	GWh)	250 days 4 000 hours	
I ₄₋₁	418 600	GJ (i.e	116.30	GWh)	250 days 4 000 hours	
I ₄₋₂	418 600	GJ (i.e	116.30	GWh)	330 days 8 000 hours	
I ₅	4 186 000	GJ (i.e	1163.00	GWh)	330 days 8 000 hours	

Prices for the standard consumers are given in national currencies, PPS (purchasing power standard as at 12 October for 1994) and in ECU (average value for July 1994).

B	DK	D	GR	E	F	IRL	I	L	NL	P	UK
BFR	DKR	DM	DRA	PTA	FR	IRL	LIT	LFR	HKL	ESC	UKL
1 PPS											
40.77	9.21	2.25	253.16	126.90	6.73	0.67	1666.67	41.77	2.24	150.83	0.70
1 ECU =											
39.52	7.53	1.92	289.85	158.23	6.57	0.80	1923.08	39.52	2.15	196.85	0.79

JULI 01 JULY 1994 JUILLET	NATIONALE WAEHRUNG NATIONAL CURRENCY / GJ MONNAIE NATIONALE			KKS	PPS	SPA / GJ	ECUS / GJ			
	STEUERN INBEGR. WITH TAXES COMPRISES	OHNE MWST. VAT EXCL. HORS TVA	OHNE STEUERN TAXES EXCL. HORS TAXES				STEUERN INBEGR. WITH TAXES COMPRISES	OHNE MWST. VAT EXCL. HORS TVA	OHNE STEUERN TAXES EXCL. HORS TAXES	

BELGIQUE (BFR)				NATIONAL CNE 0 P 0.9					
I1	302.4	251.0	237.3	7.42	6.16	5.82	7.65	6.35	6.00
I2	224.8	186.6	186.6	5.51	4.58	4.58	5.69	4.72	4.72
I3-1	174.1	144.5	144.5	4.27	3.54	3.54	4.40	3.66	3.66
I3-2	137.5	114.1	114.1	3.37	2.80	2.80	3.48	2.89	2.89
I4-1	137.5	114.1	114.1	3.37	2.80	2.80	3.48	2.89	2.89
I4-2	125.2	103.9	103.9	3.07	2.55	2.55	3.17	2.63	2.63
I5

				NATIONAL CNE 0.5 P 1					
I1	302.4	251.0	237.3	7.42	6.16	5.82	7.65	6.35	6.00
I2	224.8	186.6	186.6	5.51	4.58	4.58	5.69	4.72	4.72
I3-1	188.9	156.8	156.8	4.63	3.85	3.85	4.78	3.97	3.97
I3-2	152.2	126.3	126.3	3.73	3.10	3.10	3.85	3.20	3.20
I4-1	152.2	126.3	126.3	3.73	3.10	3.10	3.85	3.20	3.20
I4-2	140.0	116.2	116.2	3.43	2.85	2.85	3.54	2.94	2.94
I5


				NATIONAL CNE 1.0 P 1 (1)					
I1	302.4	251.0	237.3	7.42	6.16	5.82	7.65	6.35	6.00
I2	224.8	186.6	186.6	5.51	4.58	4.58	5.69	4.72	4.72
I3-1	194.5	161.4	161.4	4.77	3.96	3.96	4.92	4.08	4.08
I3-2	157.8	131.0	131.0	3.87	3.21	3.21	3.99	3.31	3.31
I4-1	157.8	131.0	131.0	3.87	3.21	3.21	3.99	3.31	3.31
I4-2	145.6	120.8	120.8	3.57	2.96	2.96	3.68	3.06	3.06
I5

				NATIONAL CHE 1 P 1.1					
I1	302.4	251.0	237.3	7.42	6.16	5.82	7.65	6.35	6.00
I2	224.8	186.6	186.6	5.51	4.58	4.58	5.69	4.72	4.72
I3-1	204.8	169.9	169.9	5.02	4.17	4.17	5.18	4.30	4.30
I3-2	168.1	139.5	139.5	4.12	3.42	3.42	4.25	3.53	3.53
I4-1	168.1	139.5	139.5	4.12	3.42	3.42	4.25	3.53	3.53
I4-2	155.9	129.4	129.4	3.82	3.17	3.17	3.94	3.27	3.27
I5


DANMARK (DKR)				NATIONAL					
I1	51.20	41.00	41.00	5.56	4.45	4.45	6.79	5.44	5.44
I2	48.50	38.80	38.80	5.27	4.21	4.21	6.44	5.15	5.15
I3-1	32.70	26.20	26.20	3.55	2.84	2.84	4.34	3.48	3.48
I3-2	32.70	26.20	26.20	3.55	2.84	2.84	4.34	3.48	3.48
I4-1	26.90	21.50	21.50	2.92	2.33	2.33	3.57	2.85	2.85
I4-2	26.90	21.50	21.50	2.92	2.33	2.33	3.57	2.85	2.85
I5

DEUTSCHLAND (DM)				DUESSELDORF					
I1	17.35	15.08	14.08	7.71	6.70	6.26	9.05	7.86	7.34
I2	12.68	11.03	10.03	5.64	4.90	4.46	6.61	5.75	5.23
I3-1	12.49	10.86	9.86	5.55	4.83	4.38	6.51	5.66	5.14
I3-2	11.95	10.39	9.39	5.31	4.62	4.17	6.23	5.42	4.90
I4-1	10.61	9.22	8.22	4.72	4.10	3.65	5.53	4.81	4.29
I4-2	10.06	8.75	7.75	4.47	3.89	3.44	5.24	4.56	4.04
I5	5.88	5.11	4.11	2.61	2.27	1.83	3.07	2.66	2.14

(1) VERWENDET FUER GEMEINSCHAFTLICHE VERGLEICHE / TAKEN FOR COMMUNITY COMPARISON / UTILISE POUR COMPARAISON COMMUNAUTAIRE

JULI 01 JULY 1994 JUILLET	NATIONALE WAEHRUNG NATIONAL CURRENCY / GJ MONNAIE NATIONALE			KKS	PPS	SPA / GJ	ECUS / GJ			
	VERBRAUCHER-TYPEN	STEUERN INBEGR. WITH TAXES COMPRISES	OHNE MWST. VAT EXCL. HORS TVA							
DEUTSCHLAND (DM)										
I1	13.45	11.69	10.69	5.98	5.20	4.75	7.01	6.09	5.57	
I2	13.35	11.61	10.61	5.93	5.16	4.72	6.96	6.05	5.53	
I3-1	12.01	10.44	9.44	5.34	4.64	4.20	6.26	5.44	4.92	
I3-2	10.83	9.42	8.42	4.81	4.19	3.74	5.65	4.91	4.39	
I4-1	9.62	8.36	7.36	4.28	3.72	3.27	5.02	4.36	3.84	
I4-2	
I5	
HAMBURG										
I1	15.97	13.89	12.89	7.10	6.17	5.73	8.33	7.24	6.72	
I2	12.71	11.06	10.06	5.65	4.92	4.47	6.63	5.77	5.24	
I3-1	11.18	9.72	8.72	4.97	4.32	3.88	5.83	5.07	4.55	
I3-2	11.08	9.64	8.64	4.92	4.28	3.84	5.78	5.03	4.50	
I4-1	10.70	9.31	8.31	4.76	4.14	3.69	5.58	4.85	4.33	
I4-2	
I5	
HANNOVER										
I1	13.61	11.83	10.83	6.05	5.26	4.81	7.10	6.17	5.65	
I2	11.44	9.94	8.94	5.08	4.42	3.97	5.96	5.18	4.66	
I3-1	11.12	9.67	8.67	4.94	4.30	3.85	5.80	5.04	4.52	
I3-2	10.73	9.33	8.33	4.77	4.15	3.70	5.59	4.86	4.34	
I4-1	10.09	8.78	7.78	4.48	3.90	3.46	5.26	4.58	4.06	
I4-2	9.74	8.47	7.47	4.33	3.76	3.32	5.08	4.42	3.89	
I5	6.01	5.22	4.22	2.67	2.32	1.88	3.13	2.72	2.20	
DORTMUND										
I1	14.09	12.25	11.25	6.26	5.44	5.00	7.35	6.39	5.86	
I2	12.97	11.28	10.28	5.76	5.01	4.57	6.76	5.88	5.36	
I3-1	11.47	9.97	8.97	5.10	4.43	3.99	5.98	5.20	4.68	
I3-2	11.12	9.67	8.67	4.94	4.30	3.85	5.80	5.04	4.52	
I4-1	10.70	9.31	8.31	4.76	4.14	3.69	5.58	4.85	4.33	
I4-2	10.38	9.03	8.03	4.61	4.01	3.57	5.41	4.71	4.19	
I5	
FRANKFURT/M										
I1	15.30	13.31	12.31	6.80	5.92	5.47	7.98	6.94	6.42	
I2	13.86	12.06	11.06	6.16	5.36	4.92	7.23	6.29	5.77	
I3-1	13.42	11.67	10.67	5.96	5.19	4.74	7.00	6.08	5.56	
I3-2	12.11	10.53	9.53	5.38	4.68	4.24	6.31	5.49	4.97	
I4-1	11.34	9.86	8.86	5.04	4.38	3.94	5.91	5.14	4.62	
I4-2	9.77	8.50	7.50	4.34	3.78	3.33	5.09	4.43	3.91	
I5	
STUTT GART										
I1	15.91	13.83	12.83	7.07	6.15	5.70	8.29	7.21	6.69	
I2	13.93	12.11	11.11	6.19	5.38	4.94	7.26	6.31	5.79	
I3-1	13.23	11.50	10.50	5.88	5.11	4.67	6.90	6.00	5.47	
I3-2	10.99	9.56	8.56	4.88	4.25	3.80	5.73	4.98	4.46	
I4-1	10.38	9.03	8.03	4.61	4.01	3.57	5.41	4.71	4.19	
I4-2	9.84	8.56	7.56	4.37	3.80	3.36	5.13	4.46	3.94	
I5	5.56	4.83	3.83	2.47	2.15	1.70	2.90	2.52	2.00	
MUENCHEN										

NATURGASPREISE FUER DIE INDUSTRIE / NATURAL GAS PRICES FOR INDUSTRY / PRIX DU GAZ NATUREL POUR USAGES INDUSTRIELS

JULI 01 JULY 1994 JUILLET	NATIONALE WAEHRUNG NATIONAL CURRENCY / GJ MONNAIE NATIONALE			KKS	PPS	SPA / GJ	ECUS / GJ			
	STEUERN INBEGR. WITH TAXES	OHNE MWST. VAT EXCL.	OHNE STEUERN TAXES HORS TAXES				STEUERN INBEGR. WITH TAXES	OHNE MWST. VAT EXCL.	OHNE STEUERN TAXES HORS TAXES	

VERBRAUCHER-TYPEN STANDARD CONSUMERS CONSUMMATEURS TYPE	DEUTSCHLAND (DM)			WESER-EMS					
I1	12.39	10.78	9.78	5.51	4.79	4.35	6.46	5.62	5.10
I2	11.21	9.75	8.75	4.98	4.33	3.89	5.84	5.08	4.56
I3-1	9.42	8.19	7.19	4.19	3.64	3.20	4.91	4.27	3.75
I3-2	9.42	8.19	7.19	4.19	3.64	3.20	4.91	4.27	3.75
I4-1	7.86	6.83	5.83	3.49	3.04	2.59	4.10	3.56	3.04
I4-2	7.86	6.83	5.83	3.49	3.04	2.59	4.10	3.56	3.04
I5	7.28	6.33	5.33	3.24	2.81	2.37	3.80	3.30	2.78

DRESDEN									
I1	15.65	13.61	12.61	6.96	6.05	5.60	8.16	7.10	6.57
I2	12.68	11.03	10.03	5.64	4.90	4.46	6.61	5.75	5.23
I3-1	11.69	10.17	9.17	5.20	4.52	4.08	6.09	5.30	4.78
I3-2	10.83	9.42	8.42	4.81	4.19	3.74	5.65	4.91	4.39
I4-1	8.98	7.81	6.81	3.99	3.47	3.03	4.68	4.07	3.55
I4-2
I5


BERLIN									
I1	18.37	15.97	14.97	8.16	7.10	6.65	9.58	8.33	7.80
I2	14.25	12.39	11.39	6.33	5.51	5.06	7.43	6.46	5.94
I3-1	13.99	12.17	11.17	6.22	5.41	4.96	7.29	6.34	5.82
I3-2	13.99	12.17	11.17	6.22	5.41	4.96	7.29	6.34	5.82
I4-1	12.27	10.67	9.67	5.45	4.74	4.30	6.40	5.56	5.04
I4-2	11.18	9.72	8.72	4.97	4.32	3.88	5.83	5.07	4.55
I5

ESPANA (PTA)			MADRID (1)						
I1	1495.80	1300.70	1300.70	11.79	10.25	10.25	9.45	8.22	8.22
I2	863.90	751.20	751.20	6.81	5.92	5.92	5.46	4.75	4.75
I3-1	569.30	495.00	495.00	4.49	3.90	3.90	3.60	3.13	3.13
I3-2	547.20	475.80	475.80	4.31	3.75	3.75	3.46	3.01	3.01
I4-1	487.20	423.70	423.70	3.84	3.34	3.34	3.08	2.68	2.68
I4-2	487.20	423.70	423.70	3.84	3.34	3.34	3.08	2.68	2.68
I5


FRANCE (FF)			PARIS						
I1	47.28	39.87	39.87	7.03	5.92	5.92	7.19	6.07	6.07
I2	39.72	33.49	33.49	5.90	4.98	4.98	6.04	5.09	5.09
I3-1	27.19	22.93	21.75	4.04	3.41	3.23	4.14	3.49	3.31
I3-2	24.87	20.97	19.79	3.70	3.12	2.94	3.78	3.19	3.01
I4-1	22.33	18.83	16.91	3.32	2.80	2.51	3.40	2.86	2.57
I4-2	21.72	18.32	16.40	3.23	2.72	2.44	3.30	2.79	2.49
I5

LILLE									
I1	47.28	39.87	39.87	7.03	5.92	5.92	7.19	6.07	6.07
I2	39.72	33.49	33.49	5.90	4.98	4.98	6.04	5.09	5.09
I3-1	27.19	22.93	21.75	4.04	3.41	3.23	4.14	3.49	3.31
I3-2	24.87	20.97	19.79	3.70	3.12	2.94	3.78	3.19	3.01
I4-1	22.21	18.73	16.81	3.30	2.78	2.50	3.38	2.85	2.56
I4-2	21.59	18.20	16.28	3.21	2.70	2.42	3.28	2.77	2.48
I5

(1) GUELTTIGE PREISE FUR DIE ANDEREN STELLEN / PRICES VALID FOR THE OTHER LOCATIONS /
PRIX VALABLES POUR LES AUTRES PLACES

JULI 01 JULY 1994 JUILLET	NATIONALE WAERHUNG NATIONAL CURRENCY / GJ MONNAIE NATIONALE			KKS	PPS	SPA / GJ	ECUS / GJ			
	VERBRAUCHER-TYPEN STANDARD CONSUMERS CONSOMMATEURS TYPE	STEUERN INBEGR. WITH TAXES COMPRISES	OHNE MWST. VAT EXCL. TVA				OHNE STEUERN TAXES EXCL. TAXES	STEUERN INBEGR. WITH TAXES COMPRISES	OHNE MWST. VAT EXCL. TVA	
FRANCE (FF)										
STRASBOURG										
I1	54.66	46.08	46.08	8.12	6.85	6.85	8.32	7.01	7.01	
I2	47.85	40.34	40.34	7.11	5.99	5.99	7.28	6.14	6.14	
I3-1	31.47	26.54	25.29	4.68	3.94	3.76	4.79	4.04	3.85	
I3-2	29.80	25.13	23.88	4.43	3.73	3.55	4.53	3.82	3.63	
I4-1	
I4-2	
I5	
LYON										
I1	47.28	39.87	39.87	7.03	5.92	5.92	7.19	6.07	6.07	
I2	39.72	33.49	33.49	5.90	4.98	4.98	6.04	5.09	5.09	
I3-1	27.19	22.93	21.75	4.04	3.41	3.23	4.14	3.49	3.31	
I3-2	24.87	20.97	19.79	3.70	3.12	2.94	3.78	3.19	3.01	
I4-1	21.93	18.49	16.57	3.26	2.75	2.46	3.34	2.81	2.52	
I4-2	21.24	17.91	15.99	3.16	2.66	2.38	3.23	2.72	2.43	
I5	
MARSEILLE										
I1	47.28	39.87	39.87	7.03	5.92	5.92	7.19	6.07	6.07	
I2	39.72	33.49	33.49	5.90	4.98	4.98	6.04	5.09	5.09	
I3-1	27.19	22.93	21.75	4.04	3.41	3.23	4.14	3.49	3.31	
I3-2	24.87	20.97	19.79	3.70	3.12	2.94	3.78	3.19	3.01	
I4-1	22.28	18.79	16.87	3.31	2.79	2.51	3.39	2.86	2.57	
I4-2	21.66	18.26	16.34	3.22	2.71	2.43	3.30	2.78	2.49	
I5	
TOULOUSE										
I1	47.28	39.87	39.87	7.03	5.92	5.92	7.19	6.07	6.07	
I2	39.72	33.49	33.49	5.90	4.98	4.98	6.04	5.09	5.09	
I3-1	27.19	22.93	21.75	4.04	3.41	3.23	4.14	3.49	3.31	
I3-2	24.87	20.97	19.79	3.70	3.12	2.94	3.78	3.19	3.01	
I4-1	21.90	18.47	16.55	3.25	2.74	2.46	3.33	2.81	2.52	
I4-2	21.28	17.95	16.03	3.16	2.67	2.38	3.24	2.73	2.44	
I5	
IRELAND (IRL)										
DUBLIN										
I1	6.18	5.49	5.49	9.21	8.18	8.18	7.72	6.86	6.86	
I2	5.01	4.46	4.46	7.47	6.65	6.65	6.26	5.57	5.57	
I3-1	2.58	2.29	2.29	3.84	3.41	3.41	3.22	2.86	2.86	
I3-2	2.58	2.29	2.29	3.84	3.41	3.41	3.22	2.86	2.86	
I4-1	
I4-2	
I5	
ITALIA (LIT)										
MILANO										
I1	18707	15720	14941	11.22	9.43	8.96	9.73	8.17	7.77	
I2	18707	15720	14941	11.22	9.43	8.96	9.73	8.17	7.77	
I3-1	7932	7277	6490	4.76	4.37	3.89	4.12	3.78	3.37	
I3-2	7625	6995	6208	4.58	4.20	3.72	3.97	3.64	3.23	
I4-1	6954	6380	5592	4.17	3.83	3.36	3.62	3.32	2.91	
I4-2	6609	6063	5276	3.97	3.64	3.17	3.44	3.15	2.74	
I5	

NATURGASPREISE FUER DIE INDUSTRIE / NATURAL GAS PRICES FOR INDUSTRY / PRIX DU GAZ NATUREL POUR USAGES INDUSTRIELS


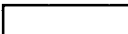
JULI 01 JULY 1994 JUILLET	NATIONALE WAEHRUNG NATIONAL CURRENCY / GJ MONNAIE NATIONALE			KKS	PPS	SPA / GJ	ECUS / GJ				
	VERBRAUCHER-TYPEN STANDARD CONSUMERS CONSUMMATEURS TYPE	STEUERN INBEGR. WITH TAXES COMPRISES	OHNE MWST. VAT EXCL. HORS TVA				OHNE STEUERN TAXES EXCL. TAXES	OHNE INBEGR. WITH TAXES COMPRISES	OHNE MWST. VAT EXCL. HORS TVA		OHNE STEUERN TAXES EXCL. TAXES
ITALIA (LIT)											
				TORINO							
I1	16928	14225	13445	10.16	8.54	8.07	8.80	7.40	6.99		
I2	15945	13399	12620	9.57	8.04	7.57	8.29	6.97	6.56		
I3-1	7932	7277	6490	4.76	4.37	3.89	4.12	3.78	3.37		
I3-2	7625	6995	6208	4.58	4.20	3.72	3.97	3.64	3.23		
I4-1	6954	6380	5592	4.17	3.83	3.36	3.62	3.32	2.91		
I4-2	6609	6063	5276	3.97	3.64	3.17	3.44	3.15	2.74		
I5		
GENOVA											
I1	17352	14581	13802	10.41	8.75	8.28	9.02	7.58	7.18		
I2	17237	14485	13706	10.34	8.69	8.22	8.96	7.53	7.13		
I3-1	7932	7277	6490	4.76	4.37	3.89	4.12	3.78	3.37		
I3-2	7625	6995	6208	4.58	4.20	3.72	3.97	3.64	3.23		
I4-1	6954	6380	5592	4.17	3.83	3.36	3.62	3.32	2.91		
I4-2	6609	6063	5276	3.97	3.64	3.17	3.44	3.15	2.74		
I5		
ROMA											
I1	21921	18421	17641	13.15	11.05	10.58	11.40	9.58	9.17		
I2	21374	17961	17182	12.82	10.78	10.31	11.11	9.34	8.93		
I3-1	7932	7277	6490	4.76	4.37	3.89	4.12	3.78	3.37		
I3-2	7625	6995	6208	4.58	4.20	3.72	3.97	3.64	3.23		
I4-1	6954	6380	5592	4.17	3.83	3.36	3.62	3.32	2.91		
I4-2	6609	6063	5276	3.97	3.64	3.17	3.44	3.15	2.74		
I5		
NAPOLI											
I1	24856	20887	20097	14.91	12.53	12.06	12.93	10.86	10.45		
I2	24025	20189	19410	14.42	12.11	11.65	12.49	10.50	10.09		
I3-1	7932	7277	6490	4.76	4.37	3.89	4.12	3.78	3.37		
I3-2	7625	6995	6208	4.58	4.20	3.72	3.97	3.64	3.23		
I4-1	6954	6380	5592	4.17	3.83	3.36	3.62	3.32	2.91		
I4-2	6609	6063	5276	3.97	3.64	3.17	3.44	3.15	2.74		
I5		
LUXEMBOURG (LFR)											
				LUXEMBOURG-VILLE							
I1	208.22	196.44	196.44	4.98	4.70	4.70	5.27	4.97	4.97		
I2	190.45	179.67	179.67	4.56	4.30	4.30	4.82	4.55	4.55		
I3-1	187.52	176.91	176.91	4.49	4.24	4.24	4.74	4.48	4.48		
I3-2	170.45	160.80	160.80	4.08	3.85	3.85	4.31	4.07	4.07		
I4-1	169.79	160.18	160.18	4.06	3.83	3.83	4.30	4.05	4.05		
I4-2	169.79	160.18	160.18	4.06	3.83	3.83	4.30	4.05	4.05		
I5		
NEDERLAND (HFL)											
				ROTTERDAM							
I1	14.37	12.23	11.64	6.42	5.46	5.20	6.68	5.68	5.41		
I2	14.12	12.02	11.43	6.30	5.37	5.10	6.56	5.59	5.31		
I3-1	8.42	7.17	6.58	3.76	3.20	2.94	3.91	3.33	3.06		
I3-2	8.42	7.17	6.58	3.76	3.20	2.94	3.91	3.33	3.06		
I4-1	6.92	5.89	5.33	3.09	2.63	2.38	3.22	2.74	2.48		
I4-2	6.92	5.89	5.33	3.09	2.63	2.38	3.22	2.74	2.48		
I5	6.12	5.21	4.80	2.73	2.33	2.14	2.84	2.42	2.23		

NATURAL GAS PRICES FOR INDUSTRY

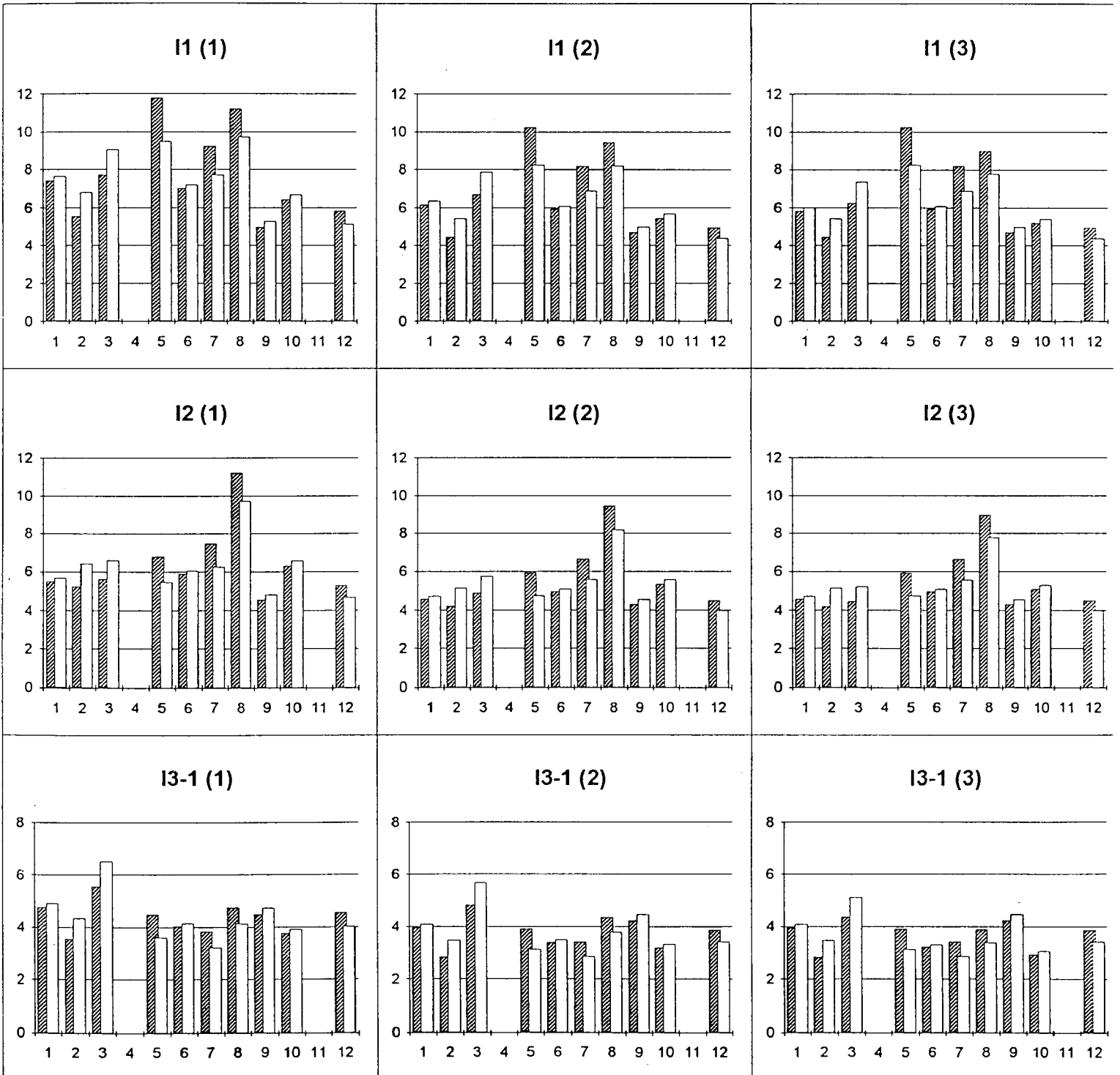
PRIX DU GAZ NATUREL POUR USAGES INDUSTRIELS

1	B	BRUXELLES*	10	NL	ROTTERDAM
2	DK	DANMARK NATIONAL	11	P	-
3	D	DUESSELDORF	12	UK	LONDON
4	GR	-			
5	E	MADRID			
6	F	PARIS			
7	IRL	DUBLIN			
8	I	MILANO			
9	L	LUXEMBOURG			

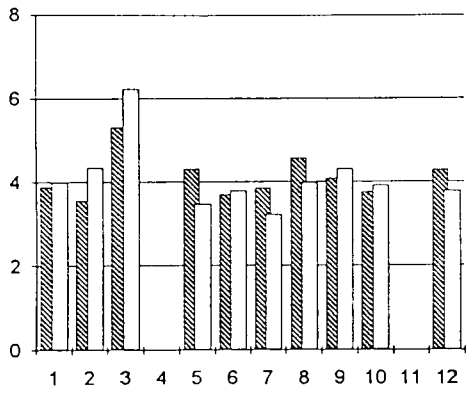
* (CNE 1.0 P 1.0)

	SPA / GJ
	ECU / GJ

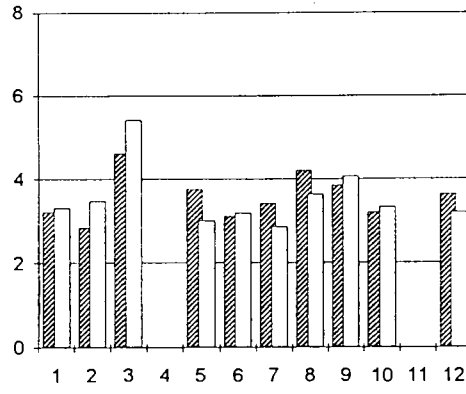
- (1) STEUERN INBEGR./ TAXES INCL./ TAXES COMPRISES
- (2) OHNE MWST./VAT EXCL./ HORS TVA
- (3) OHNE STEUERN/TAXES EXCL./ HORS TAXES



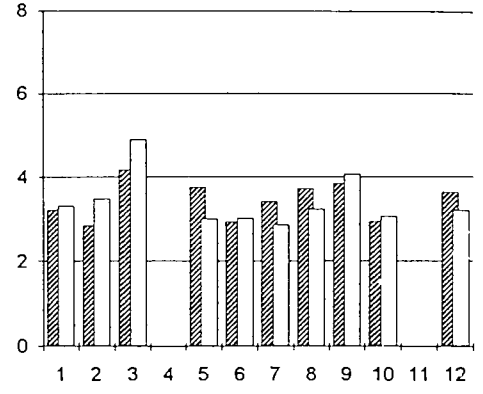
13-2 (1)



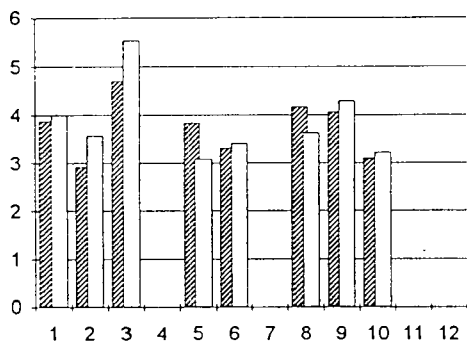
13-2 (2)



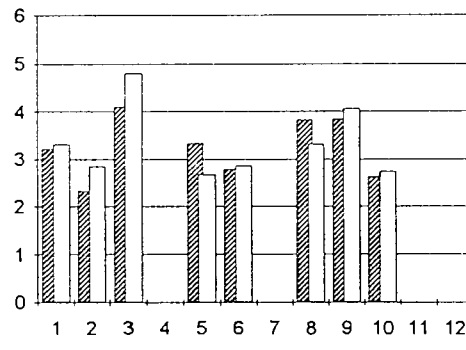
13-2 (3)



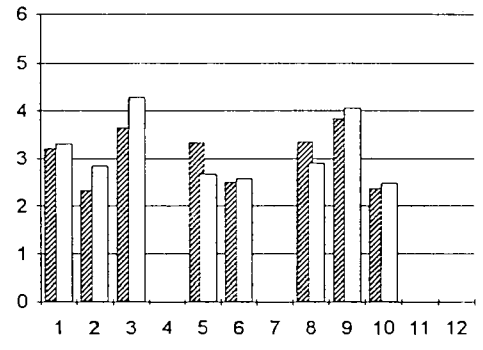
14-1 (1)



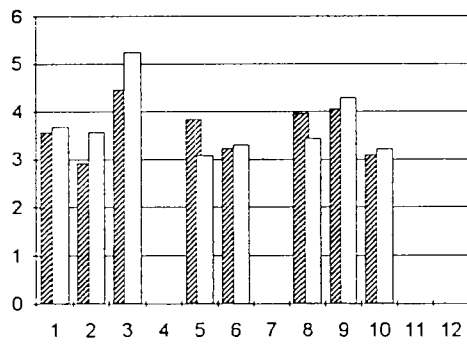
14-1 (2)



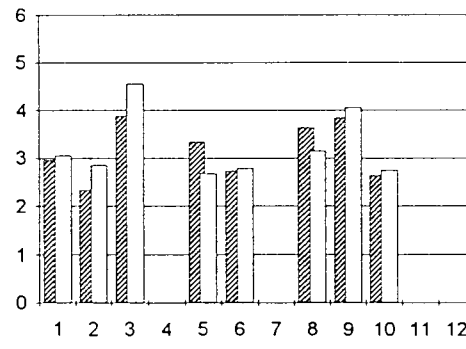
14-1 (3)



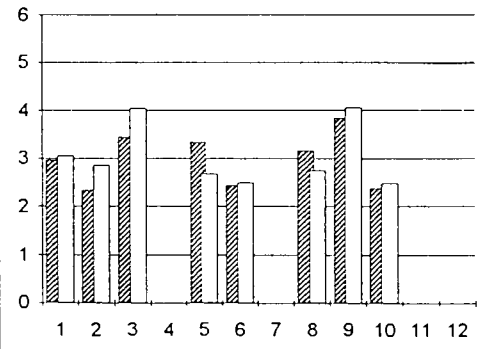
14-2 (1)



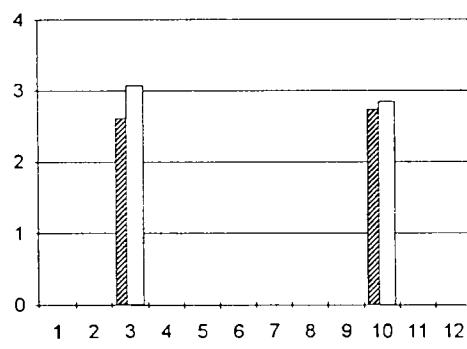
14-2 (2)



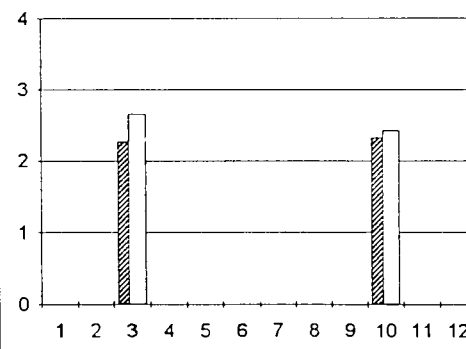
14-2 (3)



15 (1)



15 (2)



15 (3)

