

1994 22

ISSN 1016-0191

GAS PRICES (INDUSTRIAL CONSUMERS) 1 January 1994

These comments are based on prices expressed in purchasing power standard (PPS); tables and graphics also mention the prices in ECU, which allows a comparison in both units.

A study of the variations in VAT excluded prices since 1 July 1993 reveals that:

- The highest recorded rises affected Belgium for I₁ (+9.9%), whereas I₂, I₃ and I₄ went up only by about 4%. In Italy, growth was mainly noticeable for I₂ in Genoa, Rome and Naples (+9.2, +6.7 and +9.1%) and for I₁ in Genoa and Rome (+7.3 and +6%); I₃₋₁ and I₃₋₂ increased in every town (+2.1 and +1.7%). I₄ and I₅ remain almost unchanged.
- In France, the most important rises are recorded in Strasbourg by I₃₋₁ (+7.7%) and I₃₋₂ (+4.4%) even though in the same town prices for I₁ and I₂ only rise very slightly (+0.6 and +0.3%). In all the other towns included in the price collection, a 3% rise is recorded for standard consumers I₁, I₂, I₃ and I₄.
- In the Netherlands, the rise only affects I₁ and I₂ (+7.4%).
- In Germany, there are strong disparities, with prices undergoing, according to the regions, either a growth (+7.7% for I₂ and +9% for I₄₋₁ in Hamburg) or a large drop (-15.3% for I₄₋₁ in Dresden). Other developments are moderate and show, on the one hand an upward trend in Düsseldorf, Hamburg, Hannover, Dortmund, Frankfurt/M and Stuttgart, and on the other a downward trend in Munich, Weser Ems, Dresden and Berlin.
- The greatest drops affect the United Kingdom for I₁ and I₂: the fall is 11% for I₁ and 14.4% for I₂ in Leeds, from 10.8% for I₁ to 11.4 % for I₂ in Birmingham, but only 7.6% for I₁ and 2.8% for I₂ in London.
- In Spain, prices for all standard consumers are decreasing, particularly those of I₃ and I₄ (from -5.5% to -5.8%).
- In the Netherlands, I₅ falls by about 6.7% whereas I₃ and I₄ only decrease by 1.1 to 1.2%.

Manuscript completed on = 29.04.94

For further information please contact:
Eurostat, L-2920 Luxembourg, tel. 4301-32040 Fax: 4301-34771

Price (excl. VAT) in Luxembourg: Subscription ECU 227

Catalogue number: CA-NL-94-022-EN-C

Council Directive No 90/377/EEC of 29 June 1990 lays down a Community procedure to improve the transparency of gas and electricity prices charged to industrial end-users.

In accordance with Article 1.1, this note sets out the prices for standard consumers in force as at 1st January 1994.

Seven standard industrial users, coded I₁ to I₅ were chosen :

	Annual consumption				Modulation
I ₁	418.60	GJ (i.e	116 300	kWh)	no load factor laid down
I ₂	4 186	GJ (i.e	1 163 000	KWh)	200 days
I ₃₋₁	41 860	GJ (i.e	11.63	GWh)	200 days 1 600 hours
I ₃₋₂	41 860	GJ (i.e	11.63	GWh)	250 days 4 000 hours
I ₄₋₁	418 600	GJ (i.e	116.3	GWh)	250 days 4 000 hours
I ₄₋₂	418 600	GJ (i.e	116.3	GWh)	330 days 8 000 hours
I ₅	4 186 000	GJ (i.e	1 163	GWh)	330 days 8 000 hours

Prices for the standard consumers are given in national currencies, PPS (purchasing power standard as at 21 March for 1994) and in ECU (average value for January 1994).

B	DK	D	GR	E	F	IRL	I	L	NL	P	UK
BFR	DKR	DM	DRA	PTA	FR	IRL	LIT	LFR	HKL	ESC	UKL
1 PPS =											
40.77	9.21	2.25	253.16	126.90	6.73	0.67	1666.67	41.77	2.24	150.83	0.70
1 ECU =											
40.35	7.54	1.93	278.55	159.49	6.60	0.79	1886.79	40.35	2.17	196.08	0.75

NATURGASPREISE FUER DIE INDUSTRIE / NATURAL GAS PRICES FOR INDUSTRY / PRIX DU GAZ NATUREL POUR USAGES INDUSTRIELS

JANUAR 01 JANUARY 1994 JANVIER	NATIONALE WAEHRUNG NATIONAL CURRENCY / GJ MONNAIE NATIONALE			KKS	PPS	SPA / GJ	ECUS / GJ		
	STEUERN INBEGR. WITH TAXES COMPRISES	OHNE MWST. VAT EXCL. HORS TVA	OHNE STEUERN TAXES EXCL. HORS TAXES				STEUERN INBEGR. WITH TAXES COMPRISES	OHNE MWST. VAT EXCL. HORS TVA	OHNE STEUERN TAXES EXCL. HORS TAXES
VERBRAUCHER-TYPEN	STEUERN	OHNE	OHNE	STEUERN	OHNE	OHNE	STEUERN	OHNE	OHNE
STANDARD CONSUMERS	WITH	VAT	TAXES	WITH	VAT	TAXES	WITH	VAT	TAXES
CONSOMMATEURS TYPE	TAXES	HORS	HORS	TAXES	HORS	HORS	TAXES	HORS	HORS
	COMPRISES	TVA	TAXES	COMPRISES	TVA	TAXES	COMPRISES	TVA	TAXES
BELGIQUE (BFR)				NATIONAL CNE 0 P 0.9					
I1	307.5	255.2	241.5	7.54	6.26	5.92	7.62	6.32	5.98
I2	230.2	191.1	191.1	5.65	4.69	4.69	5.70	4.74	4.74
I3-1	179.9	149.3	149.3	4.41	3.66	3.66	4.46	3.70	3.70
I3-2	143.5	119.1	119.1	3.52	2.92	2.92	3.56	2.95	2.95
I4-1	143.5	119.1	119.1	3.52	2.92	2.92	3.56	2.95	2.95
I4-2	131.4	109.0	109.0	3.22	2.67	2.67	3.26	2.70	2.70
I5
				NATIONAL CNE 0.5 P 1					
I1	307.5	255.2	241.5	7.54	6.26	5.92	7.62	6.32	5.98
I2	230.2	191.1	191.1	5.65	4.69	4.69	5.70	4.74	4.74
I3-1	194.7	161.6	161.6	4.78	3.96	3.96	4.82	4.00	4.00
I3-2	158.3	131.3	131.3	3.88	3.22	3.22	3.92	3.25	3.25
I4-1	158.3	131.3	131.3	3.88	3.22	3.22	3.92	3.25	3.25
I4-2	146.1	121.3	121.3	3.58	2.98	2.98	3.62	3.01	3.01
I5
				NATIONAL CNE 1.0 P 1 (1)					
I1	307.5	255.2	241.5	7.54	6.26	5.92	7.62	6.32	5.98
I2	230.2	191.1	191.1	5.65	4.69	4.69	5.70	4.74	4.74
I3-1	200.2	166.2	166.2	4.91	4.08	4.08	4.96	4.12	4.12
I3-2	163.8	136.0	136.0	4.02	3.34	3.34	4.06	3.37	3.37
I4-1	163.8	136.0	136.0	4.02	3.34	3.34	4.06	3.37	3.37
I4-2	151.7	125.9	125.9	3.72	3.09	3.09	3.76	3.12	3.12
I5
				NATIONAL CNE 1 P 1.1					
I1	307.5	255.2	241.5	7.54	6.26	5.92	7.62	6.32	5.98
I2	230.2	191.1	191.1	5.65	4.69	4.69	5.70	4.74	4.74
I3-1	210.5	174.7	174.7	5.16	4.29	4.29	5.22	4.33	4.33
I3-2	174.1	144.5	144.5	4.27	3.54	3.54	4.31	3.58	3.58
I4-1	174.1	144.5	144.5	4.27	3.54	3.54	4.31	3.58	3.58
I4-2	162.0	134.4	134.4	3.97	3.30	3.30	4.01	3.33	3.33
I5
DANEMARK (DKR)				NATIONAL					
I1	51.20	41.00	41.00	5.56	4.45	4.45	6.79	5.44	5.44
I2	48.50	38.80	38.80	5.27	4.21	4.21	6.43	5.14	5.14
I3-1	30.60	24.40	24.40	3.32	2.65	2.65	4.06	3.24	3.24
I3-2	30.60	24.40	24.40	3.32	2.65	2.65	4.06	3.24	3.24
I4-1	23.20	18.50	18.50	2.52	2.01	2.01	3.08	2.45	2.45
I4-2	23.20	18.50	18.50	2.52	2.01	2.01	3.08	2.45	2.45
I5
DEUTSCHLAND (DM)				DUESSELDORF					
I1	17.35	15.08	14.08	7.71	6.70	6.26	8.98	7.81	7.29
I2	13.03	11.33	10.33	5.79	5.04	4.59	6.75	5.87	5.35
I3-1	12.84	11.17	10.17	5.71	4.96	4.52	6.65	5.78	5.27
I3-2	12.30	10.69	9.69	5.47	4.75	4.31	6.37	5.53	5.02
I4-1	10.93	9.50	8.50	4.86	4.22	3.78	5.66	4.92	4.40
I4-2	10.41	9.06	8.06	4.63	4.03	3.58	5.39	4.69	4.17
I5	6.13	5.33	4.33	2.72	2.37	1.92	3.17	2.76	2.24

(1) VERWENDET FUER GEMEINSCHAFTLICHE VERGLEICHE / TAKEN FOR COMMUNITY COMPARISON / UTILISE POUR COMPARAISON COMMUNAUTAIRE

JANUAR 01 JANUARY 1994 JANVIER	NATIONALE WAEHRUNG NATIONAL CURRENCY / GJ MONNAIE NATIONALE			KKS	PPS	SPA / GJ	ECUS / GJ		
	STEUERN INBEGR. WITH TAXES COMPRISES	OHNE MWST. VAT EXCL. HORS TVA	OHNE STEUERN TAXES EXCL. HORS TAXES				STEUERN INBEGR. WITH TAXES COMPRISES	OHNE MWST. VAT EXCL. HORS TVA	OHNE STEUERN TAXES EXCL. HORS TAXES
DEUTSCHLAND (DM)									
I1	14.02	12.19	11.19	6.23	5.42	4.97	7.26	6.31	5.79
I2	13.93	12.11	11.11	6.19	5.38	4.94	7.21	6.27	5.75
I3-1	12.84	11.17	10.17	5.71	4.96	4.52	6.65	5.78	5.27
I3-2	11.66	10.14	9.14	5.18	4.51	4.06	6.04	5.25	4.73
I4-1	10.03	8.72	7.72	4.46	3.88	3.43	5.19	4.51	4.00
I4-2
I5
HAMBURG									
I1	15.97	13.89	12.89	7.10	6.17	5.73	8.27	7.19	6.67
I2	12.94	11.25	10.25	5.75	5.00	4.56	6.70	5.82	5.31
I3-1	11.37	9.89	8.89	5.05	4.40	3.95	5.89	5.12	4.60
I3-2	11.28	9.81	8.81	5.01	4.36	3.92	5.84	5.08	4.56
I4-1	10.99	9.56	8.56	4.88	4.25	3.80	5.69	4.95	4.43
I4-2
I5
HANNOVER									
I1	14.57	12.67	11.67	6.48	5.63	5.19	7.54	6.56	6.04
I2	11.76	10.22	9.22	5.23	4.54	4.10	6.09	5.29	4.77
I3-1	11.44	9.94	8.94	5.08	4.42	3.97	5.92	5.15	4.63
I3-2	11.05	9.61	8.61	4.91	4.27	3.83	5.72	4.98	4.46
I4-1	10.41	9.06	8.06	4.63	4.03	3.58	5.39	4.69	4.17
I4-2	10.06	8.75	7.75	4.47	3.89	3.44	5.21	4.53	4.01
I5	6.01	5.22	4.22	2.67	2.32	1.88	3.11	2.70	2.18
DORTMUND									
I1	14.09	12.25	11.25	6.26	5.44	5.00	7.29	6.34	5.82
I2	13.16	11.44	10.44	5.85	5.08	4.64	6.81	5.92	5.40
I3-1	11.66	10.14	9.14	5.18	4.51	4.06	6.04	5.25	4.73
I3-2	11.34	9.86	8.86	5.04	4.38	3.94	5.87	5.10	4.59
I4-1	10.93	9.50	8.50	4.86	4.22	3.78	5.66	4.92	4.40
I4-2	10.57	9.19	8.19	4.70	4.08	3.64	5.47	4.76	4.24
I5
FRANKFURT/M									
I1	15.30	13.31	12.31	6.80	5.92	5.47	7.92	6.89	6.37
I2	13.96	12.14	11.14	6.20	5.40	4.95	7.23	6.28	5.77
I3-1	13.51	11.75	10.75	6.00	5.22	4.78	6.99	6.08	5.57
I3-2	12.20	10.61	9.61	5.42	4.72	4.27	6.32	5.49	4.98
I4-1	11.50	10.00	9.00	5.11	4.44	4.00	5.95	5.18	4.66
I4-2	10.19	8.86	7.86	4.53	3.94	3.49	5.28	4.59	4.07
I5
STUTT GART									
I1	15.91	13.83	12.83	7.07	6.15	5.70	8.24	7.16	6.64
I2	14.12	12.28	11.28	6.28	5.46	5.01	7.31	6.36	5.84
I3-1	13.38	11.64	10.64	5.95	5.17	4.73	6.93	6.03	5.51
I3-2	11.37	9.89	8.89	5.05	4.40	3.95	5.89	5.12	4.60
I4-1	10.80	9.39	8.39	4.80	4.17	3.73	5.59	4.86	4.34
I4-2	10.06	8.75	7.75	4.47	3.89	3.44	5.21	4.53	4.01
I5	5.62	4.89	3.89	2.50	2.17	1.73	2.91	2.53	2.01
MUENCHEN									

NATURGASPREISE FUER DIE INDUSTRIE / NATURAL GAS PRICES FOR INDUSTRY / PRIX DU GAZ NATUREL POUR USAGES INDUSTRIELS

JANUAR 01 JANUARY 1994 JANVIER	NATIONALE WAEHRUNG NATIONAL CURRENCY / GJ MONNAIE NATIONALE			KKS	PPS	SPA / GJ	ECUS / GJ		
	VERBRAUCHER-TYPEN STANDARD CONSUMERS CONSOMMATEURS TYPE	STEUERN INBEGR. WITH TAXES TAXES COMPRISES	OHNE MWST. VAT EXCL. HORS TVA				OHNE STEUERN TAXES EXCL. HORS TAXES	STEUERN INBEGR. WITH TAXES HORS COMPRISES	OHNE MWST. VAT EXCL. HORS TVA
DEUTSCHLAND (DM)									
I1	12.39	10.78	9.78	5.51	4.79	4.35	6.41	5.58	5.06
I2	11.88	10.33	9.33	5.28	4.59	4.15	6.15	5.35	4.83
I3-1	9.74	8.47	7.47	4.33	3.76	3.32	5.04	4.38	3.87
I3-2	9.74	8.47	7.47	4.33	3.76	3.32	5.04	4.38	3.87
I4-1	8.05	7.00	6.00	3.58	3.11	2.67	4.17	3.62	3.11
I4-2	8.05	7.00	6.00	3.58	3.11	2.67	4.17	3.62	3.11
I5	7.44	6.47	5.47	3.31	2.88	2.43	3.85	3.35	2.83
WESER-EMS									
DRESDEN									
I1	15.53	13.50	12.50	6.90	6.00	5.56	8.04	6.99	6.47
I2	12.97	11.28	10.28	5.76	5.01	4.57	6.71	5.84	5.32
I3-1	12.08	10.50	9.50	5.37	4.67	4.22	6.25	5.44	4.92
I3-2	11.72	10.19	9.19	5.21	4.53	4.08	6.07	5.28	4.76
I4-1	8.78	7.64	6.64	3.90	3.40	2.95	4.55	3.96	3.44
I4-2
I5
BERLIN									
I1	18.37	15.97	14.97	8.16	7.10	6.65	9.51	8.27	7.75
I2	14.47	12.58	11.58	6.43	5.59	5.15	7.49	6.51	5.99
I3-1	14.22	12.36	11.36	6.32	5.49	5.05	7.36	6.40	5.88
I3-2	14.22	12.36	11.36	6.32	5.49	5.05	7.36	6.40	5.88
I4-1	12.49	10.86	9.86	5.55	4.83	4.38	6.47	5.62	5.10
I4-2	11.18	9.72	8.72	4.97	4.32	3.88	5.79	5.03	4.51
I5
ESPANA (PTA)									
MADRID (1)									
I1	1445.80	1257.20	1257.20	11.39	9.91	9.91	9.07	7.88	7.88
I2	813.80	707.70	707.70	6.41	5.58	5.58	5.10	4.44	4.44
I3-1	422.00	367.00	367.00	3.33	2.89	2.89	2.65	2.30	2.30
I3-2	418.30	363.70	363.70	3.30	2.87	2.87	2.62	2.28	2.28
I4-1	387.70	337.10	337.10	3.06	2.66	2.66	2.43	2.11	2.11
I4-2	387.70	337.10	337.10	3.06	2.66	2.66	2.43	2.11	2.11
I5
FRANCE (FF)									
PARIS									
I1	48.18	40.62	40.62	7.16	6.04	6.04	7.30	6.16	6.16
I2	40.45	34.11	34.11	6.01	5.07	5.07	6.13	5.17	5.17
I3-1	28.45	23.99	22.83	4.23	3.56	3.39	4.31	3.64	3.46
I3-2	27.77	23.41	22.26	4.13	3.48	3.31	4.21	3.55	3.37
I4-1	23.60	19.90	18.02	3.51	2.96	2.68	3.58	3.02	2.73
I4-2	22.99	19.39	17.51	3.42	2.88	2.60	3.49	2.94	2.65
I5
LILLE									
I1	48.18	40.62	40.62	7.16	6.04	6.04	7.30	6.16	6.16
I2	40.45	34.11	34.11	6.01	5.07	5.07	6.13	5.17	5.17
I3-1	28.34	23.89	22.74	4.21	3.55	3.38	4.30	3.62	3.45
I3-2	27.64	23.31	22.16	4.11	3.46	3.29	4.19	3.53	3.36
I4-1	23.48	19.80	17.92	3.49	2.94	2.66	3.56	3.00	2.72
I4-2	22.86	19.28	17.40	3.40	2.86	2.59	3.47	2.92	2.64
I5

(1) GUELTIGE PREISE FUR DIE ANDEREN STELLEN / PRICES VALID FOR THE OTHER LOCATIONS /
PRIX VALABLES POUR LES AUTRES PLACES

NATURGASPREISE FUER DIE INDUSTRIE / NATURAL GAS PRICES FOR INDUSTRY / PRIX DU GAZ NATUREL POUR USAGES INDUSTRIELS

JANUAR 01 JANUARY 1994 JANVIER	NATIONALE WAEHRUNG NATIONAL CURRENCY / GJ MONNAIE NATIONALE			KKS	PPS	SPA / GJ	ECUS / GJ		
	VERBRAUCHER-TYPEN STANDARD CONSUMERS CONSOMMATEURS TYPE	STEUERN INBEGR. WITH TAXES COMPRISES	OHNE MWST. VAT EXCL. HORS TVA				OHNE STEUERN TAXES EXCL. HORS TAXES	STEUERN INBEGR. WITH TAXES COMPRISES	OHNE MWST. VAT EXCL. HORS TVA
	FRANCE (FF)			STRASBOURG					
I1	56.12	47.32	47.32	8.34	7.03	7.03	8.51	7.17	7.17
I2	49.20	41.48	41.48	7.31	6.16	6.16	7.46	6.29	6.29
I3-1	32.64	27.52	26.30	4.85	4.09	3.91	4.95	4.17	3.99
I3-2	30.89	26.04	24.83	4.59	3.87	3.69	4.68	3.95	3.76
I4-1
I4-2
I5
	LYON			MARSEILLE					
I1	48.18	40.62	40.62	7.16	6.04	6.04	7.30	6.16	6.16
I2	40.45	34.11	34.11	6.01	5.07	5.07	6.13	5.17	5.17
I3-1	27.93	23.55	22.40	4.15	3.50	3.33	4.23	3.57	3.40
I3-2	27.32	23.04	21.88	4.06	3.42	3.25	4.14	3.49	3.32
I4-1	23.20	19.56	17.68	3.45	2.91	2.63	3.52	2.97	2.68
I4-2	22.51	18.98	17.10	3.34	2.82	2.54	3.41	2.88	2.59
I5
	TOULOUSE			IRELAND (IRL)					
I1	48.18	40.62	40.62	7.16	6.04	6.04	7.30	6.16	6.16
I2	40.45	34.11	34.11	6.01	5.07	5.07	6.13	5.17	5.17
I3-1	28.57	24.09	22.94	4.25	3.58	3.41	4.33	3.65	3.48
I3-2	25.93	21.86	20.71	3.85	3.25	3.08	3.93	3.31	3.14
I4-1	23.10	19.47	17.59	3.43	2.89	2.61	3.50	2.95	2.67
I4-2	22.48	18.95	17.07	3.34	2.82	2.54	3.41	2.87	2.59
I5
	DUBLIN			ITALIA (LIT)					
I1	6.18	5.49	5.49	9.21	8.18	8.18	7.94	7.06	7.06
I2	5.01	4.46	4.46	7.47	6.65	6.65	6.44	5.73	5.73
I3-1	2.58	2.29	2.29	3.84	3.41	3.41	3.32	2.94	2.94
I3-2	2.58	2.29	2.29	3.84	3.41	3.41	3.32	2.94	2.94
I4-1
I4-2
I5
	MILANO								
I1	17797	14955	14176	10.68	8.97	8.51	9.43	7.93	7.51
I2	17307	14544	13765	10.38	8.73	8.26	9.17	7.71	7.30
I3-1	8102	7433	6645	4.86	4.46	3.99	4.29	3.94	3.52
I3-2	7796	7153	6365	4.68	4.29	3.82	4.13	3.79	3.37
I4-1	7063	6479	5692	4.24	3.89	3.42	3.74	3.43	3.02
I4-2	6721	6166	5379	4.03	3.70	3.23	3.56	3.27	2.85
I5

NATURGASPREISE FUER DIE INDUSTRIE / NATURAL GAS PRICES FOR INDUSTRY / PRIX DU GAZ NATUREL POUR USAGES INDUSTRIELS

JANUAR 01 JANUARY 1994 JANVIER	NATIONALE WAEHRUNG NATIONAL CURRENCY / GJ MONNAIE NATIONALE			KKS	PPS	SPA / GJ	ECUS / GJ		
	VERBRAUCHER-TYPEN STANDARD CONSUMERS CONSOMMATEURS TYPE	STEUERN INBEGR. WITH TAXES COMPRISES	OHNE MWST. VAT EXCL. HORS TVA				OHNE STEUERN TAXES EXCL. HORS TAXES	STEUERN INBEGR. WITH TAXES COMPRISES	OHNE MWST. VAT EXCL. HORS TVA
ITALIA (LIT)									
I1	16709	14041	13261	10.03	8.42	7.96	8.86	7.44	7.03
I2	16002	13447	12668	9.60	8.07	7.60	8.48	7.13	6.71
I3-1	8102	7433	6645	4.86	4.46	3.99	4.29	3.94	3.52
I3-2	7796	7153	6365	4.68	4.29	3.82	4.13	3.79	3.37
I4-1	7063	6479	5692	4.24	3.89	3.42	3.74	3.43	3.02
I4-2	6721	6166	5379	4.03	3.70	3.23	3.56	3.27	2.85
I5
TORINO									
I1	17650	14832	14053	10.59	8.90	8.43	9.35	7.86	7.45
I2	17535	14735	13956	10.52	8.84	8.37	9.29	7.81	7.40
I3-1	8102	7433	6645	4.86	4.46	3.99	4.29	3.94	3.52
I3-2	7796	7153	6365	4.68	4.29	3.82	4.13	3.79	3.37
I4-1	7063	6479	5692	4.24	3.89	3.42	3.74	3.43	3.02
I4-2	6721	6166	5379	4.03	3.70	3.23	3.56	3.27	2.85
I5
GENOVA									
I1	20006	16812	16033	12.00	10.09	9.62	10.60	8.91	8.50
I2	19163	16103	15324	11.50	9.66	9.19	10.16	8.53	8.12
I3-1	8102	7433	6645	4.86	4.46	3.99	4.29	3.94	3.52
I3-2	7796	7153	6365	4.68	4.29	3.82	4.13	3.79	3.37
I4-1	7063	6479	5692	4.24	3.89	3.42	3.74	3.43	3.02
I4-2	6721	6166	5379	4.03	3.70	3.23	3.56	3.27	2.85
I5
ROMA									
I1	24715	20769	19990	14.83	12.46	11.99	13.10	11.01	10.59
I2	24115	20265	19486	14.47	12.16	11.69	12.78	10.74	10.33
I3-1	8102	7433	6645	4.86	4.46	3.99	4.29	3.94	3.52
I3-2	7796	7153	6365	4.68	4.29	3.82	4.13	3.79	3.37
I4-1	7063	6479	5692	4.24	3.89	3.42	3.74	3.43	3.02
I4-2	6721	6166	5379	4.03	3.70	3.23	3.56	3.27	2.85
I5
NAPOLI									
I1	206.45	194.76	194.76	4.94	4.66	4.66	5.12	4.83	4.83
I2	188.67	177.99	177.99	4.52	4.26	4.26	4.68	4.41	4.41
I3-1	185.75	175.23	175.23	4.45	4.20	4.20	4.60	4.34	4.34
I3-2	180.58	170.36	170.36	4.32	4.08	4.08	4.47	4.22	4.22
I4-1	172.32	162.57	162.57	4.13	3.89	3.89	4.27	4.03	4.03
I4-2	172.32	162.57	162.57	4.13	3.89	3.89	4.27	4.03	4.03
I5
LUXEMBOURG (LFR)									
LUXEMBOURG-VILLE									
I1	14.77	12.57	11.98	6.59	5.61	5.35	6.79	5.78	5.51
I2	14.52	12.36	11.77	6.48	5.52	5.25	6.68	5.69	5.41
I3-1	8.36	7.12	6.53	3.73	3.18	2.92	3.85	3.28	3.00
I3-2	8.36	7.12	6.53	3.73	3.18	2.92	3.85	3.28	3.00
I4-1	6.78	5.77	5.21	3.03	2.58	2.33	3.12	2.65	2.40
I4-2	6.78	5.77	5.21	3.03	2.58	2.33	3.12	2.65	2.40
I5	5.78	4.92	4.51	2.58	2.20	2.01	2.66	2.26	2.07
NEDERLAND (HFL)									
ROTTERDAM									

NATURGASPREISE FUER DIE INDUSTRIE / NATURAL GAS PRICES FOR INDUSTRY / PRIX DU GAZ NATUREL POUR USAGES INDUSTRIELS

JANUAR 01 JANUARY 1994 JANVIER	NATIONALE WAEHRUNG NATIONAL CURRENCY / GJ MONNAIE NATIONALE			KKS	PPS	SPA / GJ	ECUS / GJ		
	STEUERN INBEGR. WITH TAXES	OHNE MWST. VAT EXCL. HORS TVA	OHNE STEUERN TAXES				STEUERN INBEGR. WITH TAXES	OHNE MWST. VAT EXCL. HORS TVA	OHNE STEUERN TAXES
VERBRAUCHER-TYPEN	STEUERN	OHNE	OHNE	STEUERN	OHNE	OHNE	STEUERN	OHNE	OHNE
STANDARD CONSUMERS	INBEGR.	MWST.	STEUERN	INBEGR.	MWST.	STEUERN	INBEGR.	MWST.	STEUERN
CONSUMMATEURS TYPE	TAXES	EXCL.	EXCL.	TAXES	EXCL.	EXCL.	TAXES	EXCL.	EXCL.
	TAXES	HORS	HORS	TAXES	HORS	HORS	TAXES	HORS	HORS
	COMPRISES	TVA	TAXES	COMPRISES	TVA	TAXES	COMPRISES	TVA	TAXES

UNITED KINGDOM (UKL)

LONDON (1)

I1	4.59	3.91	3.91	6.59	5.61	5.61	6.15	5.23	5.23
I2	3.95	3.37	3.37	5.67	4.83	4.83	5.30	4.51	4.51
I3-1	3.24	2.76	2.76	4.65	3.96	3.96	4.34	3.70	3.70
I3-2	3.16	2.69	2.69	4.53	3.86	3.86	4.23	3.60	3.60
I4-1
I4-2
I5

(1) PREISE AUCH FUER / PRICES ALSO VALID FOR / PRIX EGALEMENT VALABLES POUR : LEEDS, BIRMINGHAM

ORTSGASPREISE FUER DIE INDUSTRIE / GASWORKS GAS PRICES FOR INDUSTRY / PRIX DU GAZ D'USINE POUR USAGES INDUSTRIELS

JANUAR 01 JANUARY 1994 JANVIER	NATIONALE WAEHRUNG NATIONAL CURRENCY / GJ MONNAIE NATIONALE			KKS	PPS	SPA / GJ	ECUS / GJ		
	STEUERN INBEGR. WITH TAXES	OHNE MWST. VAT EXCL. HORS TVA	OHNE STEUERN TAXES				STEUERN INBEGR. WITH TAXES	OHNE MWST. VAT EXCL. HORS TVA	OHNE STEUERN TAXES
VERBRAUCHER-TYPEN	STEUERN	OHNE	OHNE	STEUERN	OHNE	OHNE	STEUERN	OHNE	OHNE
STANDARD CONSUMERS	INBEGR.	MWST.	STEUERN	INBEGR.	MWST.	STEUERN	INBEGR.	MWST.	STEUERN
CONSUMMATEURS TYPE	TAXES	EXCL.	EXCL.	TAXES	EXCL.	EXCL.	TAXES	EXCL.	EXCL.
	TAXES	HORS	HORS	TAXES	HORS	HORS	TAXES	HORS	HORS
	COMPRISES	TVA	TAXES	COMPRISES	TVA	TAXES	COMPRISES	TVA	TAXES

DANMARK (DKR)

KOBENHAVN

I1	129.60	103.68	103.68	14.07	11.26	11.26	17.18	13.75	13.75
I2	118.26	94.61	94.61	12.84	10.27	10.27	15.68	12.55	12.55
I3-1
I3-2
I4-1
I4-2
I5

PORTUGAL (ESC)



LISBOA

I1	2411.00	2296.00	2296.00	15.98	15.22	15.22	12.30	11.71	11.71
I2	2411.00	2296.00	2296.00	15.98	15.22	15.22	12.30	11.71	11.71
I3-1	1156.00	1101.00	1101.00	7.66	7.30	7.30	5.90	5.62	5.62
I3-2	1156.00	1101.00	1101.00	7.66	7.30	7.30	5.90	5.62	5.62
I4-1
I4-2
I5

NATURGASPREISE FUER DIE INDUSTRIE
NATURAL GAS PRICES FOR INDUSTRY
PRIX DU GAZ NATUREL POUR USAGES INDUSTRIELS

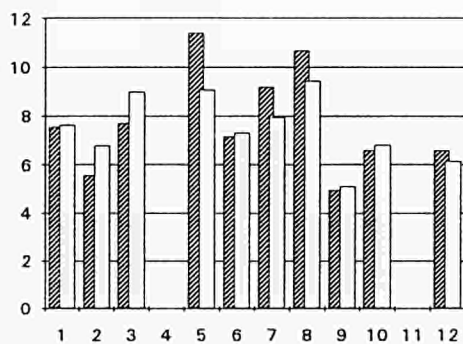
1	B	BRUXELLES*	10	NL	ROTTERDAM
2	DK	DANMARK NATIONAL	11	P	-
3	D	DUESSELDORF	12	UK	LONDON
4	GR	-			
5	E	MADRID			
6	F	PARIS			
7	IRL	DUBLIN			
8	I	MILANO			
9	L	LUXEMBOURG			

* (CNE 1.0 P 1.0)

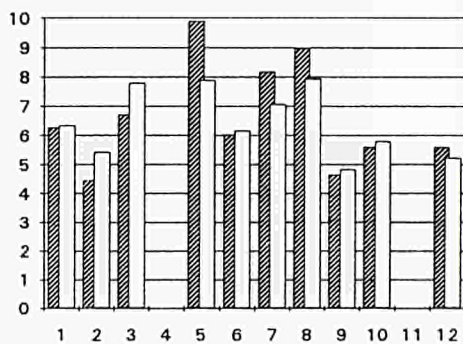
 SPA / GJ
 ECU / GJ

- (1) STEUERN INBEGR./ TAXES INCL./ TAXES COMPRISES
- (2) OHNE MWSt./VAT EXCL./ HORS TVA
- (3) OHNE STEUERN/TAXES EXCL./ HORS TAXES

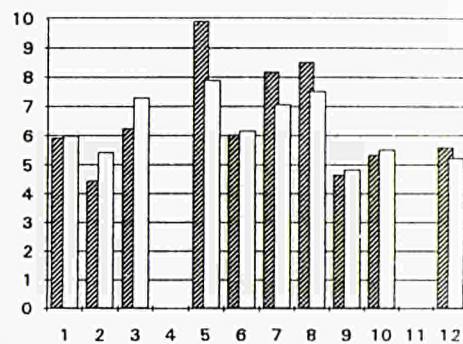
I1 (1)



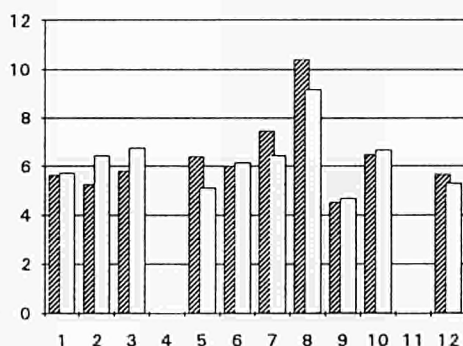
I1 (2)



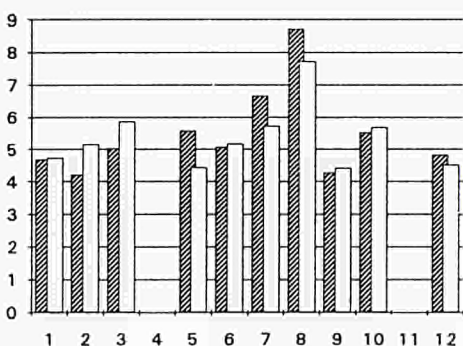
I1 (3)



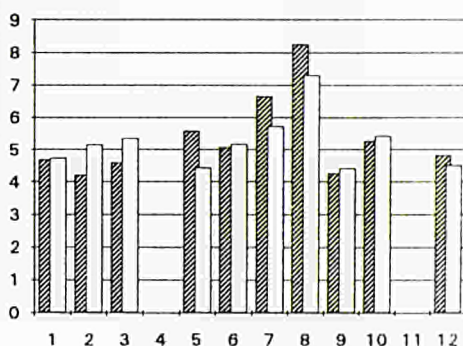
I2 (1)



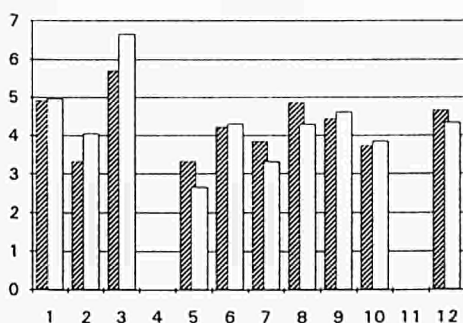
I2 (2)



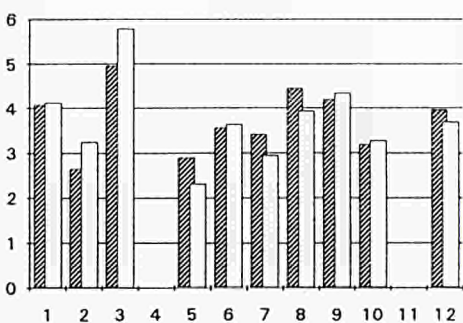
I2 (3)



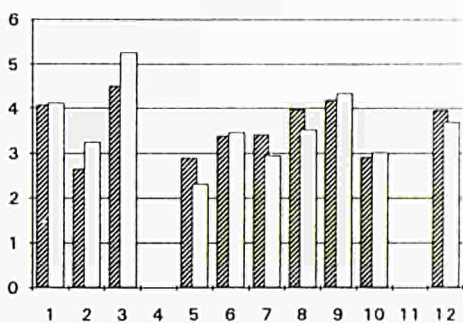
I3-1 (1)



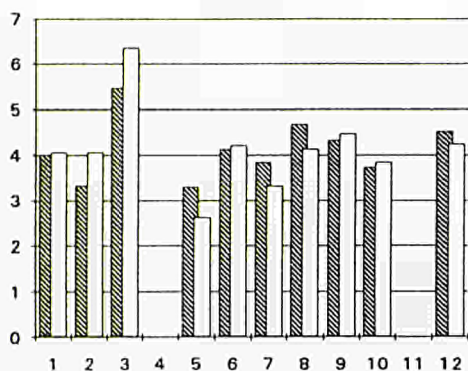
I3-1 (2)



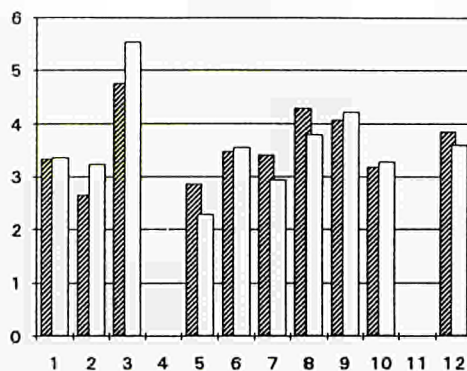
I3-1 (3)



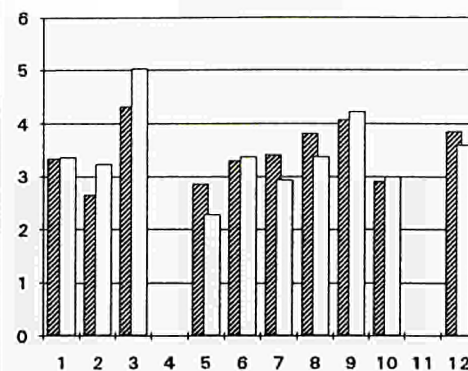
13-2 (1)



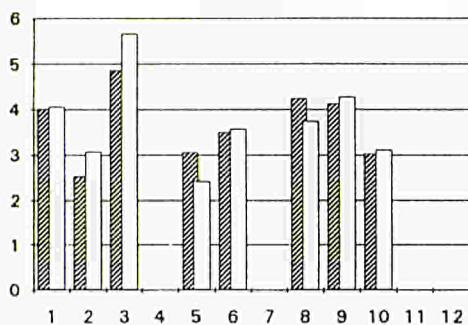
13-2 (2)



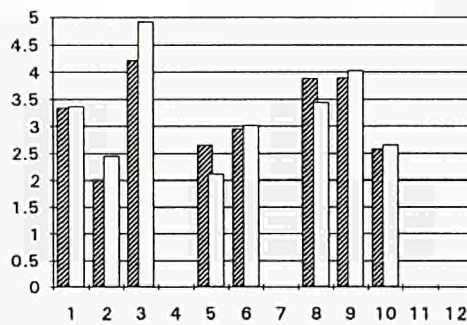
13-2 (3)



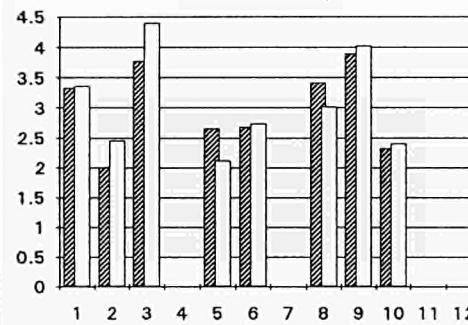
14-1 (1)



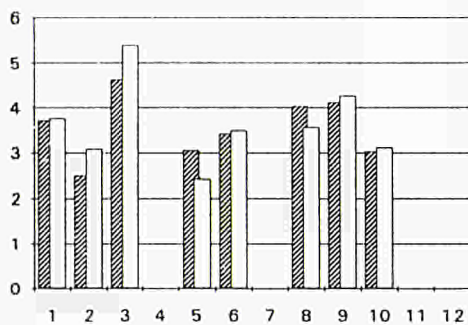
14-1 (2)



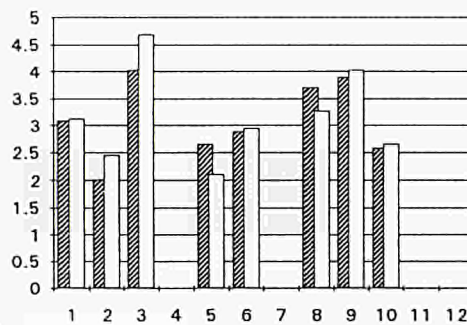
14-1 (3)



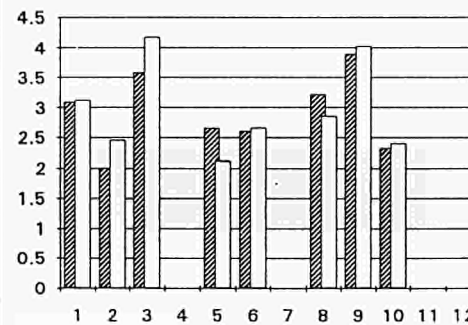
14-2 (1)



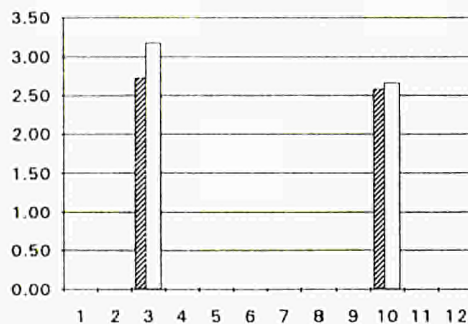
14-2 (2)



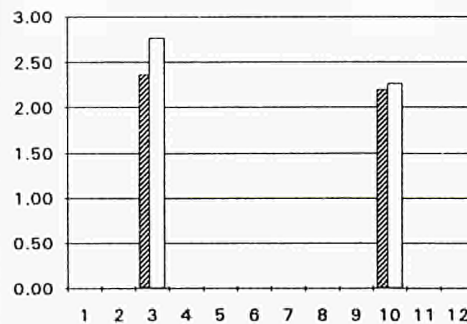
14-2 (3)



15 (1)



15 (2)



15 (3)

