

1994 □ 19

ISSN 1016-0191

GAS PRICES (HOUSEHOLD CONSUMERS) 1 January 1994

These comments are based on prices expressed in purchasing power standard (PPS); tables and graphics also mention the prices in ECU, which allows a comparison in both units.

A study of the variations in VAT excluded prices since 1 July 1993 reveals that:

- The highest rises were recorded in Italy: mainly in Turin for D₁ (+15.3%) and D₂ (+14%) as well as D₄ (+14.4%) and in Genoa for D₁ (+18.7%) and D₂ (+17.9%).
In Rome, D₄ recorded the highest growth (+19%) but D₁ and D₂ increased by 9.5 and 7.8% respectively.
- In Belgium, the higher the consumption of the standard consumer, the higher the price increase is (+6.8% for D₁, +10.4% for D₄). It is the same in the Netherlands where prices went up by 4.8% for D₁ and by 7.4% for D₄.
- In Ireland, prices increase for all standard consumers (+6.9%) as well as in France (+3%) except in Strasbourg for D₄ (+0.5%).
- In Germany, the rise is around 1.3% but there are a few exceptions. In Dresden, prices increase by 2.1% for D_{3-B} and decrease by 0.5% for D₄ whereas, again for D₄, they increase in Munich (+5.5%) and Hannover (+2.8%). In Düsseldorf, there is a downward trend, all the more accentuated where the size of the consumer is greater (-0.5% for D₁, -2.8% for D₄).
- In Luxembourg, prices underwent a slight increase (+0.2% for D₁, +0.5% for D₄)
- The strongest decrease in prices were noticed in the United Kingdom (-1.4%) and in Spain (-1.6%), for all standard consumers.

Manuscript completed on = 29.04.94

For further information please contact:
Eurostat, L-2920 Luxembourg, tel. 4301-32040 Fax: 4301-34771

Price (excl. VAT) in Luxembourg: Subscription ECU 227

Catalogue number: CA-NL-94-019-EN-C

Five household standard consumers, coded D₁ to D₄, were chosen :

Annual consumption						
D ₁	8.37	GJ	(i.e	2 326	kWh)	
D ₂ ⁽¹⁾	16.74	GJ	(i.e	4 652	kWh)	
D ₃	83.7	GJ	(i.e	23 260	kWh)	
D _{3b}	125.6	GJ	(i.e	34 890	kWh)	
D ₄	1 047	GJ	(i.e	290 750	kWh)	

(1) For the United Kingdom there is an additional standard consumer, i.e. 33.49 GJ (9 300 kWh or 8 Gcal).

Prices for the standard consumers are given in national currencies, PPS (purchasing power standard as at 21 March for 1994) and in ECU (average value for January 1994).

B	DK	D	GR	E	F	IRL	I	L	NL	P	UK
BFR	DKR	DM	DRA	PTA	FR	IRL	LIT	LFR	HKL	ESC	UKL
						1 PPS =					
40.77	9.21	2.25	253.16	126.90	6.73	0.67	1666.67	41.77	2.24	150.83	0.70
						1 ECU =					
40.35	7.54	1.93	278.55	159.49	6.60	0.79	1886.79	40.35	2.17	196.08	0.75

NATURGASPREISE FUER HAUSHALTE / NATURAL GAS PRICES FOR HOUSEHOLDS / PRIX DU GAZ NATUREL POUR USAGES DOMESTIQUES

JANUAR 01 JANUARY 1994 JANVIER	NATIONALE WAEHRUNG NATIONAL CURRENCY / GJ MONNAIE NATIONALE			KKS	PPS	SPA / GJ	ECUS / GJ		
	STEUERN INBEGR. WITH TAXES	OHNE MWST. VAT EXCL. HORS TVA	OHNE STEUERN TAXES EXCL. HORS TAXES				STEUERN INBEGR. WITH TAXES	OHNE MWST. VAT EXCL. HORS TVA	OHNE STEUERN TAXES EXCL. HORS TAXES
VERBRAUCHER-TYPEN STANDARD CONSUMERS CONSUMMATEURS TYPE	STEUERN INBEGR. WITH TAXES	OHNE MWST. VAT EXCL. HORS TVA	OHNE STEUERN TAXES EXCL. HORS TAXES	STEUERN INBEGR. WITH TAXES	OHNE MWST. VAT EXCL. HORS TVA	OHNE STEUERN TAXES EXCL. HORS TAXES	STEUERN INBEGR. WITH TAXES	OHNE MWST. VAT EXCL. HORS TVA	OHNE STEUERN TAXES EXCL. HORS TAXES
BELGIQUE (BFR)									
BRUXELLES									
D1	639.4	530.6	516.9	15.68	13.02	12.68	15.84	13.15	12.81
D2	589.9	489.6	475.9	14.47	12.01	11.67	14.62	12.13	11.79
D3	347.3	288.2	274.5	8.52	7.07	6.73	8.61	7.14	6.80
D3-B	331.1	274.8	261.1	8.12	6.74	6.40	8.20	6.81	6.47
D4	277.6	230.4	216.7	6.81	5.65	5.32	6.88	5.71	5.37
DEUTSCHLAND (DM)									
DUESSELDORF									
D1	36.43	31.68	30.68	16.19	14.08	13.64	18.86	16.40	15.88
D2	27.49	23.90	22.90	12.22	10.62	10.18	14.23	12.37	11.86
D3	17.78	15.46	14.46	7.90	6.87	6.43	9.20	8.00	7.49
D3-B	16.75	14.57	13.57	7.44	6.48	6.03	8.67	7.54	7.03
D4	15.44	13.42	12.42	6.86	5.96	5.52	7.99	6.95	6.43
HAMBURG									
D1	37.35	32.48	31.48	16.60	14.44	13.99	19.34	16.81	16.30
D2	30.06	26.14	25.14	13.36	11.62	11.17	15.56	13.53	13.01
D3	17.06	14.83	13.83	7.58	6.59	6.15	8.83	7.68	7.16
D3-B	16.40	14.26	13.26	7.29	6.34	5.89	8.49	7.38	6.86
D4	14.02	12.19	11.19	6.23	5.42	4.97	7.26	6.31	5.79
HANNOVER									
D1	33.19	28.86	27.86	14.75	12.83	12.38	17.18	14.94	14.42
D2	26.18	22.77	21.77	11.64	10.12	9.68	13.55	11.79	11.27
D3	16.83	14.64	13.64	7.48	6.51	6.06	8.71	7.58	7.06
D3-B	15.97	13.89	12.89	7.10	6.17	5.73	8.27	7.19	6.67
D4	14.68	12.77	11.77	6.52	5.68	5.23	7.60	6.61	6.09
DORTMUND									
D1	38.74	33.69	32.69	17.22	14.97	14.53	20.06	17.44	16.92
D2	27.20	23.65	22.65	12.09	10.51	10.07	14.08	12.24	11.73
D3	16.72	14.54	13.54	7.43	6.46	6.02	8.66	7.53	7.01
D3-B	15.48	13.46	12.46	6.88	5.98	5.54	8.01	6.97	6.45
D4	14.56	12.66	11.66	6.47	5.63	5.18	7.54	6.55	6.04
FRANKFURT/M									
D1	36.98	32.16	31.16	16.44	14.29	13.85	19.14	16.65	16.13
D2	28.13	24.46	23.46	12.50	10.87	10.43	14.56	12.66	12.15
D3	16.60	14.44	13.44	7.38	6.42	5.97	8.59	7.48	6.96
D3-B	15.01	13.05	12.05	6.67	5.80	5.36	7.77	6.76	6.24
D4	14.12	12.28	11.28	6.28	5.46	5.01	7.31	6.36	5.84
STUTTGART									
D1	40.39	35.12	34.12	17.95	15.61	15.16	20.91	18.18	17.66
D2	33.63	29.25	28.25	14.95	13.00	12.56	17.41	15.14	14.63
D3	19.98	17.38	16.38	8.88	7.72	7.28	10.34	9.00	8.48
D3-B	18.22	15.84	14.84	8.10	7.04	6.60	9.43	8.20	7.68
D4	14.76	12.83	11.83	6.56	5.70	5.26	7.64	6.64	6.12

JANUAR 01 JANUARY 1994 JANVIER	NATIONALE WAERHRUNG NATIONAL CURRENCY / GJ MONNAIE NATIONALE			KKS	PPS	SPA / GJ	ECUS / GJ		
	VERBRAUCHER-TYPEN STANDARD CONSUMERS CONSOMMATEURS TYPE	STEUERN INBEGR. WITH TAXES COMPRISES	OHNE MWST. VAT EXCL. HORS TVA				OHNE STEUERN TAXES TAXES	OHNE INBEGR. WITH TAXES COMPRISES	OHNE MWST. VAT EXCL. HORS TVA
DEUTSCHLAND (DM)									
MUNCHEN									
D1	31.82	27.67	26.67	14.14	12.30	11.85	16.47	14.32	13.81
D2	25.23	21.94	20.94	11.21	9.75	9.31	13.06	11.36	10.84
D3	18.91	16.44	15.44	8.40	7.31	6.86	9.79	8.51	7.99
D3-B	17.26	15.01	14.01	7.67	6.67	6.23	8.94	7.77	7.25
D4	14.83	12.89	11.89	6.59	5.73	5.28	7.68	6.67	6.16
WESER-EMS									
D1	30.83	26.81	25.81	13.70	11.92	11.47	15.96	13.88	13.36
D2	23.22	20.19	19.19	10.32	8.97	8.53	12.02	10.45	9.93
D3	14.62	12.72	11.72	6.50	5.65	5.21	7.57	6.59	6.07
D3-B	13.69	11.90	10.90	6.08	5.29	4.84	7.09	6.16	5.64
D4	12.04	10.47	9.47	5.35	4.65	4.21	6.23	5.42	4.90
DRESDEN									
D1	30.83	26.81	25.81	13.70	11.92	11.47	15.96	13.88	13.36
D2	23.22	20.19	19.19	10.32	8.97	8.53	12.02	10.45	9.93
D3	14.62	12.72	11.72	6.50	5.65	5.21	7.57	6.59	6.07
D3-B	13.69	11.90	10.90	6.08	5.29	4.84	7.09	6.16	5.64
D4	12.04	10.47	9.47	5.35	4.65	4.21	6.23	5.42	4.90
BERLIN									
D1	30.83	26.81	25.81	13.70	11.92	11.47	15.96	13.88	13.36
D2	23.22	20.19	19.19	10.32	8.97	8.53	12.02	10.45	9.93
D3	14.62	12.72	11.72	6.50	5.65	5.21	7.57	6.59	6.07
D3-B	13.69	11.90	10.90	6.08	5.29	4.84	7.09	6.16	5.64
D4	12.04	10.47	9.47	5.35	4.65	4.21	6.23	5.42	4.90
ESPANA (PTA)									
MADRID (1)									
D1	2247.6	1954.4	1954.4	17.71	15.40	15.40	14.09	12.25	12.25
D2	1979.7	1721.5	1721.5	15.60	13.57	13.57	12.41	10.79	10.79
D3	1562.6	1358.8	1358.8	12.31	10.71	10.71	9.80	8.52	8.52
D3-B	1522.3	1323.7	1323.7	12.00	10.43	10.43	9.54	8.30	8.30
D4	1074.6	934.4	934.4	8.47	7.36	7.36	6.74	5.86	5.86
FRANCE (FF)									
PARIS (2)									
D1	98.81	85.95	85.95	14.68	12.77	12.77	14.98	13.03	13.03
D2	86.25	74.04	74.04	12.82	11.00	11.00	13.08	11.22	11.22
D3	57.45	49.41	49.41	8.54	7.34	7.34	8.71	7.49	7.49
D3-B	53.87	46.33	46.33	8.00	6.88	6.88	8.17	7.02	7.02
D4	46.94	40.04	40.04	6.97	5.95	5.95	7.12	6.07	6.07
STRASBOURG									
D1	130.39	112.11	112.11	19.37	16.66	16.66	19.77	17.00	17.00
D2	107.38	91.63	91.63	15.96	13.62	13.62	16.28	13.89	13.89
D3	63.02	53.80	53.80	9.36	7.99	7.99	9.55	8.16	8.16
D3-B	60.89	51.78	51.78	9.05	7.69	7.69	9.23	7.85	7.85
D4	53.80	45.50	45.50	7.99	6.76	6.76	8.16	6.90	6.90

(1) PREISE AUCH FUER / PRICES ALSO VALID FOR / PRIX EGALEMENT VALABLES POUR : BARCELONA, VALENCIA
UND FUER ORTSGAS / AND FOR GASWORKS GAS / ET POUR GAZ D'USINE : MADRID, VALENCIA

(2) PREISE ZONE 1, UNTER ANDEREM AUCH GUELTIG FUER / PRICES ZONE 1, ALSO VALID FOR/
PRIX TARIFS ZONE 1, EGALEMENT VALABLES POUR, ENTRE AUTRES : LILLE, LYON, TOULOUSE, MARSEILLE

NATURGASPREISE FUER HAUSHALTE / NATURAL GAS PRICES FOR HOUSEHOLDS / PRIX DU GAZ NATUREL POUR USAGES DOMESTIQUES

JANUAR 01 JANUARY 1994 JANVIER	NATIONALE WAHRUNG NATIONAL CURRENCY / GJ MONNAIE NATIONALE			KKS	PPS	SPA / GJ	ECUS / GJ						
	VERBRAUCHER-TYPEN	STEUERN INBEGR.	OHNE MWST.				OHNE STEUERN	STEUERN INBEGR.	OHNE MWST.	OHNE STEUERN	STEUERN INBEGR.	OHNE MWST.	OHNE STEUERN
	STANDARD CONSUMERS	WITH TAXES	VAT EXCL.				TAXES EXCL.	WITH TAXES	VAT EXCL.	TAXES EXCL.	WITH TAXES	VAT EXCL.	TAXES EXCL.
CONSOMMATEURS TYPE	TAXES COMPRISES	HORS TVA	HORS TAXES	TAXES COMPRISES	HORS TVA	HORS TAXES	TAXES COMPRISES	HORS TVA	HORS TAXES				
NEDERLAND (HFL)				ROTTERDAM									
D1	28.31	24.09	23.50	12.64	10.75	10.49	13.02	11.08	10.81				
D2	21.40	18.21	17.62	9.55	8.13	7.87	9.84	8.38	8.11				
D3	15.87	13.51	12.92	7.08	6.03	5.77	7.30	6.21	5.94				
D3-B	15.41	13.12	12.53	6.88	5.86	5.59	7.09	6.04	5.76				
D4	14.60	12.43	11.84	6.52	5.55	5.29	6.72	5.72	5.45				
UNITED KINGDOM (UKL) (1)				LONDON (2)									
D1	7.57	7.57	7.57	10.86	10.86	10.86	10.14	10.14	10.14				
D2	6.30	6.30	6.30	9.04	9.04	9.04	8.44	8.44	8.44				
D3	4.54	4.54	4.54	6.51	6.51	6.51	6.08	6.08	6.08				
D3-B	4.40	4.40	4.40	6.31	6.31	6.31	5.90	5.90	5.90				
D2-B	5.20	5.20	5.20	7.46	7.46	7.46	6.97	6.97	6.97				

ORTSGASPREISE FUER HAUSHALTE / GASWORKS GAS PRICES FOR HOUSEHOLDS / PRIX DU GAZ D'USINE POUR USAGES DOMESTIQUES

JANUAR 01 JANUARY 1994 JANVIER	NATIONALE WAHRUNG NATIONAL CURRENCY / GJ MONNAIE NATIONALE			KKS	PPS	SPA / GJ	ECUS / GJ						
	VERBRAUCHER-TYPEN	STEUERN INBEGR.	OHNE MWST.				OHNE STEUERN	STEUERN INBEGR.	OHNE MWST.	OHNE STEUERN	STEUERN INBEGR.	OHNE MWST.	OHNE STEUERN
	STANDARD CONSUMERS	WITH TAXES	VAT EXCL.				TAXES EXCL.	WITH TAXES	VAT EXCL.	TAXES EXCL.	WITH TAXES	VAT EXCL.	TAXES EXCL.
CONSOMMATEURS TYPE	TAXES COMPRISES	HORS TVA	HORS TAXES	TAXES COMPRISES	HORS TVA	HORS TAXES	TAXES COMPRISES	HORS TVA	HORS TAXES				
DANMARK (DKR)				KOBENHAVN									
D1	219.20	175.36	175.36	23.80	19.04	19.04	29.07	23.25	23.25				
D2	207.29	165.83	165.83	22.51	18.01	18.01	27.49	21.99	21.99				
D3	157.19	125.75	125.75	17.07	13.65	13.65	20.84	16.67	16.67				
D3-B	147.84	118.27	118.27	16.05	12.84	12.84	19.60	15.68	15.68				
D4	122.38	97.90	97.90	13.29	10.63	10.63	16.23	12.98	12.98				
ITALIA (LIT)				MILANO									
D1	21224	19472	18100	12.73	11.68	10.86	11.25	10.32	9.59				
D2	19423	17819	16448	11.65	10.69	9.87	10.29	9.44	8.72				
D3	27396	25134	18607	16.44	15.08	11.16	14.52	13.32	9.86				
D3-B	27307	25053	18370	16.38	15.03	11.02	14.47	13.28	9.74				
D4	27615	25335	18339	16.57	15.20	11.00	14.64	13.43	9.72				
PORTUGAL (ESC)				LISBOA									
D1	2411.00	2296.00	2296.00	15.98	15.22	15.22	12.30	11.71	11.71				
D2	2411.00	2296.00	2296.00	15.98	15.22	15.22	12.30	11.71	11.71				
D3	2411.00	2296.00	2296.00	15.98	15.22	15.22	12.30	11.71	11.71				
D3-B	2411.00	2296.00	2296.00	15.98	15.22	15.22	12.30	11.71	11.71				
D4													

NATURGASPREISE FUER HAUSHALTE / NATURAL GAS PRICES FOR HOUSEHOLDS / PRIX DU GAZ NATUREL POUR USAGES DOMESTIQUES


JANUAR 01 JANUARY 1994 JANVIER	NATIONALE WAEHRUNG NATIONAL CURRENCY / GJ MONNAIE NATIONALE			KKS	PPS	SPA / GJ	ECUS / GJ		
	STEUERN INBEGR. WITH TAXES COMPRISES	OHNE MWST. VAT EXCL. HORS TVA	OHNE STEUERN TAXES EXCL. HORS TAXES				STEUERN INBEGR. WITH TAXES COMPRISES	OHNE MWST. VAT EXCL. HORS TVA	OHNE STEUERN TAXES EXCL. HORS TAXES
VERBRAUCHER-TYPEN	STEUERN INBEGR.	OHNE MWST.	OHNE STEUERN	STEUERN INBEGR.	OHNE MWST.	OHNE STEUERN	STEUERN INBEGR.	OHNE MWST.	OHNE STEUERN
STANDARD CONSUMERS	WITH TAXES	VAT EXCL.	TAXES EXCL.	WITH TAXES	VAT EXCL.	TAXES EXCL.	WITH TAXES	VAT EXCL.	TAXES EXCL.
CONSUMMATEURS TYPE	TAXES COMPRISES	HORS TVA	HORS TAXES	TAXES COMPRISES	HORS TVA	HORS TAXES	TAXES COMPRISES	HORS TVA	HORS TAXES
IRELAND (IRL) DUBLIN									
D1	15.72	13.97	13.97	23.43	20.82	20.82	20.20	17.95	17.95
D2	13.41	11.92	11.92	19.99	17.76	17.76	17.23	15.32	15.32
D3	6.40	5.69	5.69	9.54	8.48	8.48	8.23	7.31	7.31
D3-B	6.40	5.69	5.69	9.54	8.48	8.48	8.23	7.31	7.31
D4	6.40	5.69	5.69	9.54	8.48	8.48	8.23	7.31	7.31
ITALIA (LIT) MILANO									
D1	19389	17789	16233	11.63	10.67	9.74	10.28	9.43	8.60
D2	17629	16173	14614	10.58	9.70	8.77	9.34	8.57	7.75
D3	27809	23369	15965	16.69	14.02	9.58	14.74	12.39	8.46
D3-B	27746	23316	15732	16.65	13.99	9.44	14.71	12.36	8.34
D4	26129	21957	14010	15.68	13.17	8.41	13.85	11.64	7.43
ITALIA (LIT) TORINO									
D1	19834	18196	16249	11.90	10.92	9.75	10.51	9.64	8.61
D2	17490	16049	14098	10.49	9.63	8.46	9.27	8.51	7.47
D3	25974	21827	13381	15.58	13.10	8.03	13.77	11.57	7.09
D3-B	25904	21768	13142	15.54	13.06	7.89	13.73	11.54	6.97
D4	26986	22678	13691	16.19	13.61	8.21	14.30	12.02	7.26
GENOVA									
D1	22438	20586	18638	13.46	12.35	11.18	11.89	10.91	9.88
D2	20095	18436	16488	12.06	11.06	9.89	10.65	9.77	8.74
D3	27318	22958	14511	16.39	13.77	8.71	14.48	12.17	7.69
D3-B	27409	23033	14046	16.45	13.82	8.43	14.53	12.21	7.44
D4	27415	23038	14051	16.45	13.82	8.43	14.53	12.21	7.45
ROMA									
D1	22014	20196	18638	13.21	12.12	11.18	11.67	10.70	9.88
D2	19670	18046	16487	11.80	10.83	9.89	10.43	9.56	8.74
D3	27809	23369	15962	16.69	14.02	9.58	14.74	12.39	8.46
D3-B	27739	23310	15723	16.64	13.99	9.43	14.70	12.35	8.33
D4	30743	25835	17887	18.45	15.50	10.73	16.29	13.69	9.48
NAPOLI									
D1	24534	22509	21028	14.72	13.51	12.62	13.00	11.93	11.14
D2	22190	20358	18878	13.31	12.21	11.33	11.76	10.79	10.01
D3	29108	26704	20741	17.46	16.02	12.44	15.43	14.15	10.99
D3-B	29056	26657	20501	17.43	15.99	12.30	15.40	14.13	10.87
D4	29308	26889	20343	17.58	16.13	12.21	15.53	14.25	10.78
LUXEMBOURG (LFR) LUXEMBOURG-VILLE									
D1	496.19	468.10	468.10	11.88	11.21	11.21	12.30	11.60	11.60
D2	424.00	400.00	400.00	10.15	9.58	9.58	10.51	9.91	9.91
D3	216.56	204.30	204.30	5.18	4.89	4.89	5.37	5.06	5.06
D3-B	211.66	199.68	199.68	5.07	4.78	4.78	5.24	4.95	4.95
D4	202.83	191.35	191.35	4.86	4.58	4.58	5.03	4.74	4.74

(1) EXTRA STANDARD ABNEHMER "D2-B" NUR FUER VEREINIGTES KOENIGREICH
EXTRA STANDARD CONSUMER "D2-B" FOR UNITED KINGDOM ONLY
CONSUMMATEUR TYPE SUPPLEMENTAIRE "D2-B", N'EXISTE QU'AU ROYAUME-UNI

(2) PREISE AUCH FUER / PRICES ALSO VALID FOR / PRIX EGALEMENT VALABLES POUR : LEEDS, BIRMINGHAM

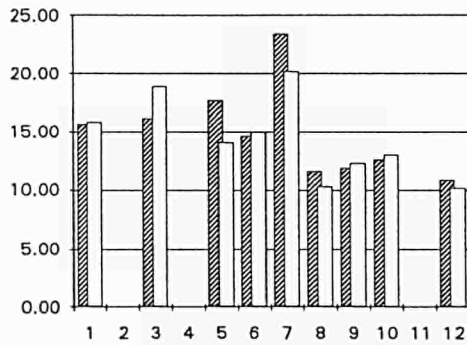
NATURGASPREISE FUER HAUSHALTE
GAS PRICES FOR HOUSEHOLDS
PRIX DU GAZ POUR USAGES DOMESTIQUES

1	B	BRUXELLES	9	L	LUXEMBOURG
2	DK	-	10	NL	ROTTERDAM
3	D	DUESSELDORF	11	P	-
4	GR	-	12	UK	LONDON
5	E	MADRID			
6	F	PARIS			
7	IRL	DUBLIN			
8	I	MILANO			

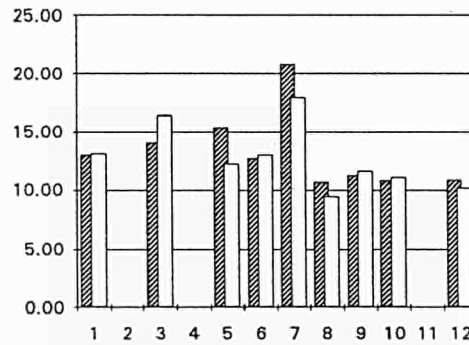
 SPA / GJ
 ECU / GJ

- (1) STEUERN INBEGR./ TAXES INCL./ TAXES COMPRISES
(2) OHNE MWSt./ VAT EXCL./ HORS TVA
(3) OHNE STEUERN/TAXES EXCL./ HORS TAXES

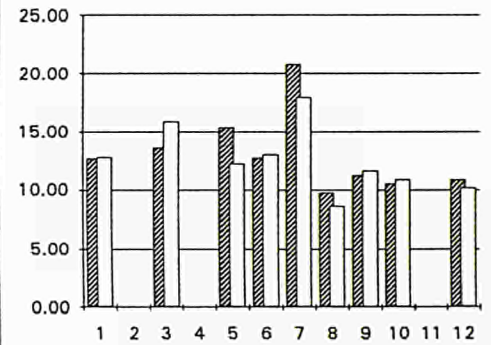
D1 (1)



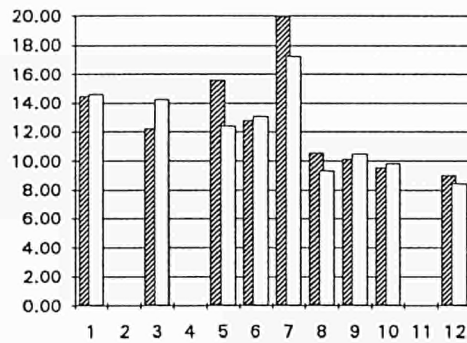
D1 (2)



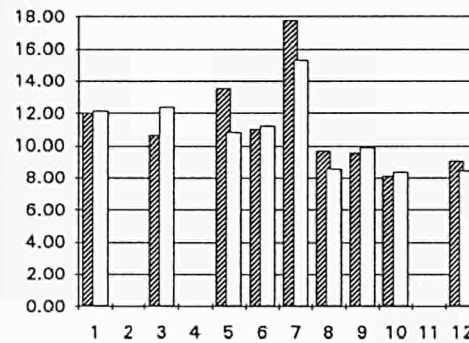
D1 (3)



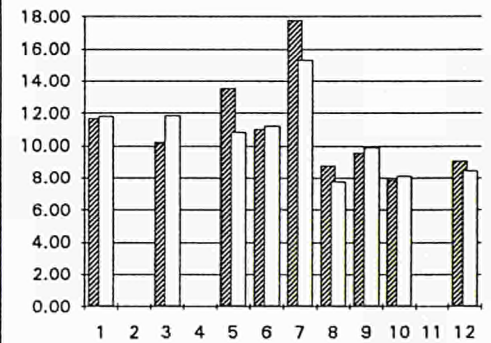
D2 (1)



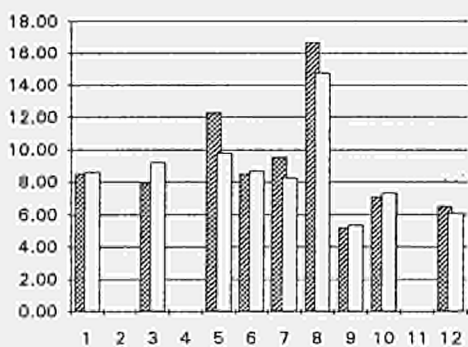
D2 (2)



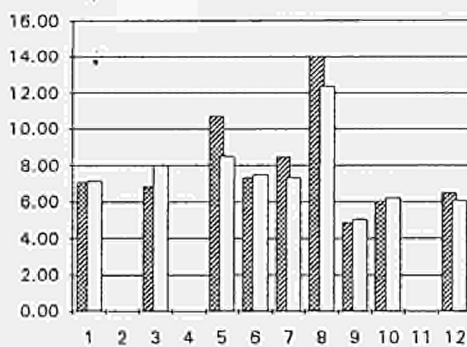
D2 (3)



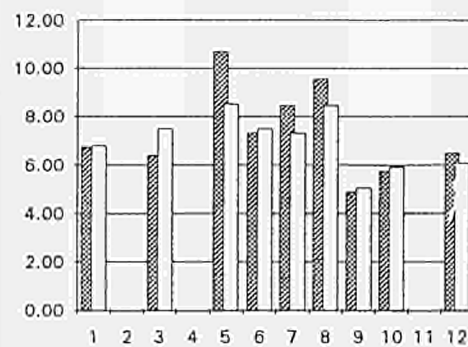
D3 (1)



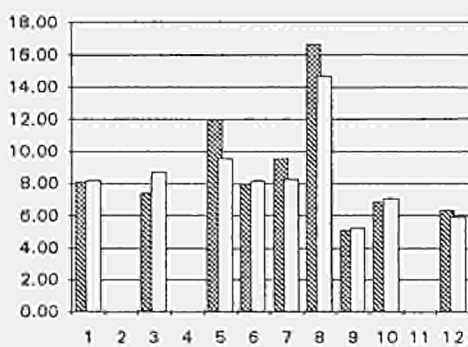
D3 (2)



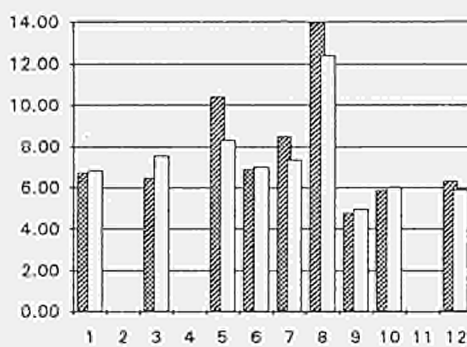
D3 (3)



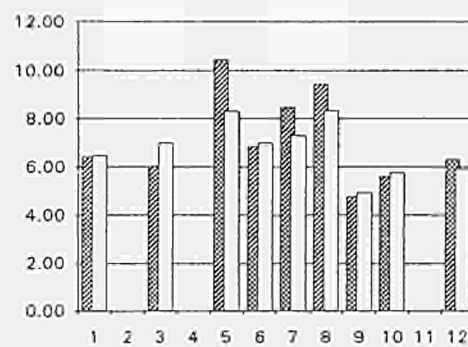
D3-B (1)



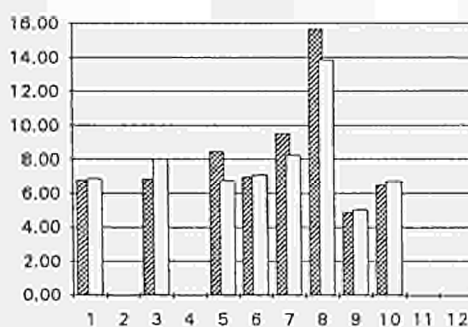
D3-B (2)



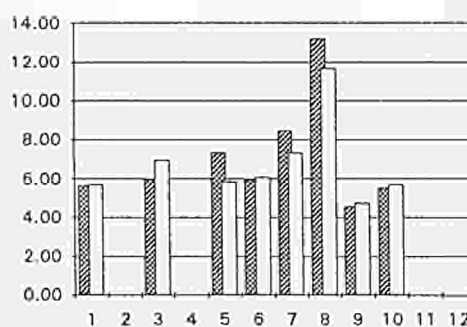
D3-B (3)



D4 (1)



D4 (2)



D4 (3)

