

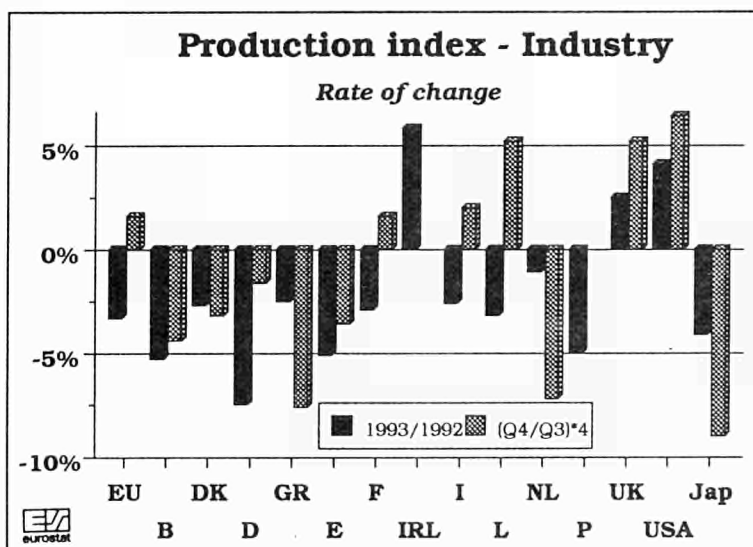
Extract from "Industrial Trends-March 1994"

Intermediate goods industry leads recovery

Industrial production in the European Union (EU) is showing signs of being at a turning point, i.e. the steep downturn in industrial output has come to a halt, with the raw materials industry already showing clear growth rates, while the capital goods industry is (still) stagnating.

industrial production was -3.2%, indicating a deepening of the recession, while the figure of +1.6% in the **USA** indicates a consolidation of the upward trend.

For the **individual Member States** of the European Union, the seasonally adjusted figures for industrial production, where available, show the following rates of change for October-December compared with the previous three months (the figures in brackets show the corresponding rates of change for the intermediate goods industry): United Kingdom +1.3% (+2.3%), Italy +0.5% (+1.2%), France +0.4% (+2.0%), Spain -1.1% (+0.3%) (estimate), West Germany -0.4% (+0.8%), Belgium -0.9% (-1.2%) (estimate), Denmark -0.8% (+1.6%), Greece -1.9% (+0.1%) and the Netherlands -1.8% (+4.4%). The economic picture is thus rather a mixed one, with the raw materials industry generally showing encouraging signs of an upturn.



The rate of change in the **industrial production index**, adjusted for the number of working days, was 0.8% up for the EU in December 1993 compared with the corresponding month of the previous year (+3.2% for the intermediate goods industry).

For the fourth quarter of 1993, the rate of change in the **seasonally adjusted production index** for the EU was 0.4% up on the previous quarter (+2.0% for the intermediate goods industry).

In **Japan**, the corresponding rate of change for

Price trends of industrial production in 1993 were in line with the recession: in the European Union prices rose by 1.5% compared with 1992 (1992 compared with 1991: 1.5%). In the Member States the inflation rate was generally lower than in the previous year and in six Member States it was even negative:

Belgium -1.0% (+0.2%), Denmark -0.9% (-1.2%), Germany -0.1% (+1.3%), Greece +11.5% (+11.9%), Spain +2.4% (+1.4%), France -0.2% (+1.0%), Ireland +2.3% (+2.1%), Italy +3.8% (+1.9%), Luxembourg -1.3% (-2.6%), Netherlands -1.2% (+0.5%), United Kingdom +3.3% (+2.0%), USA +1.5% (+0.6%) and Japan -1.6% (-1.0%).

Manuscript completed on = 14.03.1994

For further information please contact: M. FELDMANN
Eurostat, L-2920 Luxembourg, tel. 4301-34401 Fax: 4301-34771

Price (excl. VAT) in Luxembourg: Subscription ECU 227

Catalogue number: CA-NL-94-010-EN-C

INDUSTRIELLE PRODUKTION

LANGFRISTIGER TREND

INDUSTRIAL PRODUCTION

LONG TERM TREND

PRODUCTION INDUSTRIELLE

TENDANCE A LONG TERME

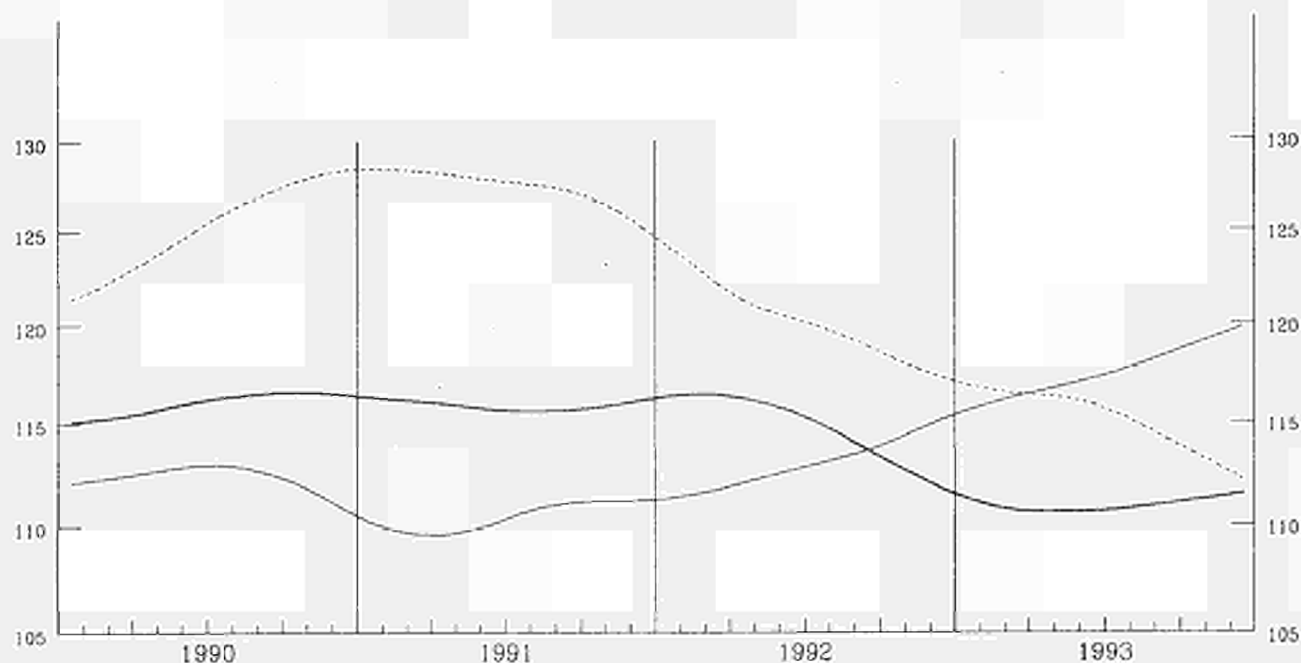
NACE 1-4

1985 = 100

USA

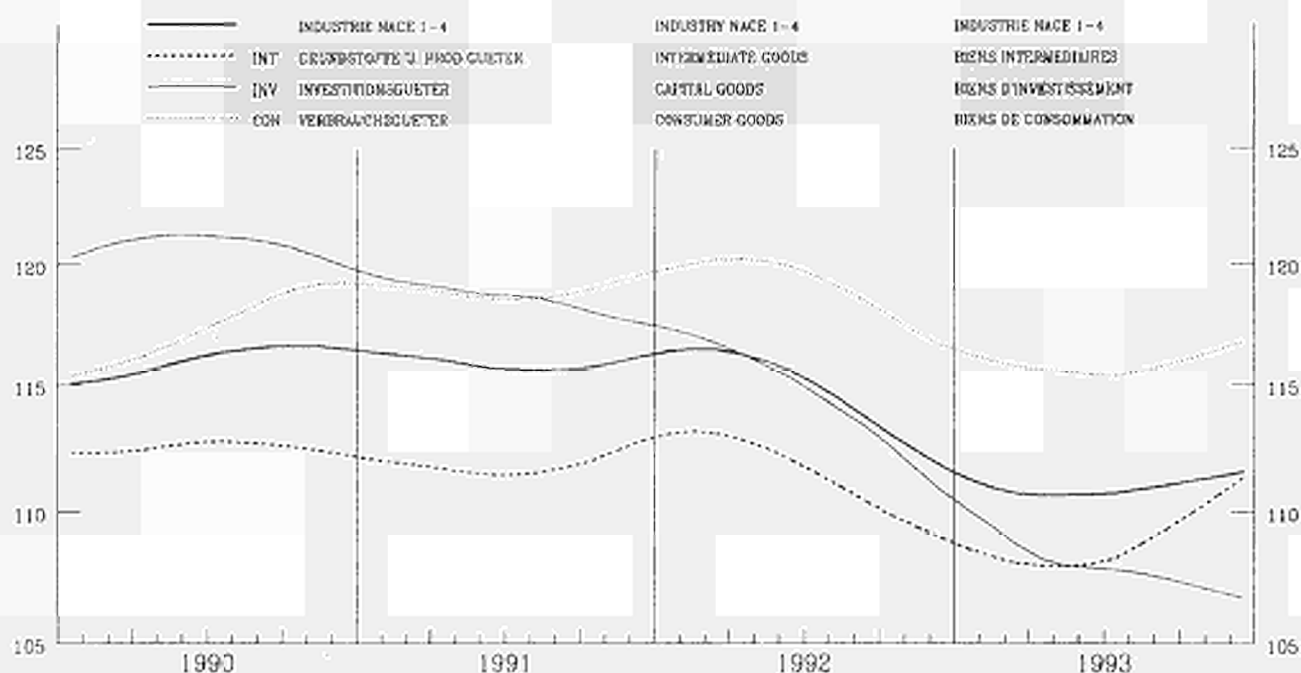
EUR 12

JAPAN



EUR 12

1985 = 100



INDFACH - LOGARITHMISCHE SKALA

SEMI-LOGARITHMIC SCALE

ECHELLE SEMI-LOGARITHMIQUE

BASISINDIKATOREN
BASIC INDICATORS
INDICATEURS DE BASE

	Letzte Zahl / Latest figure / Dernier chiffre					Veränderung / Change / Variation	
	Zeltraum Period Période	Pro Arbeitstag Per working day Par jour ouvrable	Saisonbereinigt Seasonally adjusted Désaisonnalisés	Pro Arbeitstag Per working day Par jour ouvrable % B ¹	Saisonbereinigt Seasonally adjusted Désaisonnalisés % A ²		
PRODUKTIONSINDIZES	INDICES OF PRODUCTION					INDICES DE PRODUCTION	
NACE 1-4							
GESAMTE INDUSTRIE OHNE BAUINDUSTRIE	TOTAL INDUSTRY EXCLUDING CONSTRUCTION					ENSEMBLE DE L'INDUSTRIE SANS BATIMENT	
EUR12	12	93	108.2	111.4	-0.8	0.4	
B	11	93	114.3	105.1	-4.7	-0.9	
DK	12	93	109.0	111.6	1.5	-0.8	
D	12	93	106.3	110.5	-3.9	-0.4	
GR	12	93	93.9	96.5	-2.5	-1.9	
E	11	93	116.3	106.7	-0.9	-0.1	
F	12	93	110.2	110.9	-1.5	0.4	
IRL	09	93	175.9	172.3	3.9	1.7	
I	12	93	104.3	109.5	0.2	0.5	
L	11	93	113.5	109.5	-5.8	1.8	
NL	12	93	118.0	108.0	0.3	-1.8	
P	10	93	128.1	123.1	-1.8	1.6	
UK	12	93	110.4	113.2	3.5	1.3	
USA	12	93	118.1	120.5	4.1	1.6	
JAP	12	93	114.8	111.8	-4.4	-3.2	
GRUNDSTOFFE UND PRODUKTIONSGÜTER	INTERMEDIATE GOODS					BIENS INTERMEDIAIRES	
EUR12	12	93	105.2	111.5	1.2	2.0	
B	11	93	113.3	105.1	-5.1	-1.3	
DK	12	93	97.0	114.5	0.5	1.6	
D	12	93	97.8	109.4	-1.2	0.8	
GR	12	93	93.6	99.1	-0.6	0.1	
E	11	93	108.9	102.6	-0.9	1.0	
F	12	93	111.7	112.1	0.4	2.0	
IRL	09	93	183.4	172.4	9.2	6.4	
I	12	93	102.6	110.0	0.3	1.2	
L	11	93	109.6	105.7	-6.7	2.6	
NL	12	93	120.0	111.2	1.4	4.4	
P	10	93	114.5	109.5	-4.9	-0.5	
UK	12	93	110.7	112.3	6.4	2.3	
USA	12	93	114.7	118.3	3.7	1.0	
JAP	12	93	115.3	113.8	-3.1	-2.7	
INVESTITIONSGÜTER	CAPITAL GOODS INDUSTRIES					BIENS D'INVESTISSEMENT	
EUR12	12	93	110.2	106.0	-4.5	-0.7	
B	10	93	114.4	108.0	3.7	4.5	
DK	12	93	118.0	103.8	-0.9	-2.2	
D	12	93	116.3	108.0	-7.0	-1.8	
GR	12	93	113.5	88.6	-20.9	-11.6	
E	11	93	129.4	110.2	-1.2	-0.9	
F	12	93	96.6	96.0	-4.5	-0.7	
IRL	09	93	234.6	230.5	0.7	-6.2	
I	12	93	104.4	101.4	-3.0	0.5	
L	11	93	96.9	94.0	-9.4	-5.7	
NL	12	93	105.0	103.9	-2.4	-1.1	
P	10	93	89.6	82.3	-15.6	-8.5	
UK	12	93	113.7	111.9	-2.2	-1.5	
USA	12	93	127.1	130.0	6.4	2.5	
JAP	12	93	110.1	106.5	-9.7	-6.6	
VERBRAUCHSGÜTER	CONSUMER GOODS					BIENS DE CONSOMMATION	
EUR12	12	93	110.2	117.4	-0.9	0.6	
B	11	93	124.0	113.1	-0.7	0.9	
DK	12	93	111.0	118.8	3.9	3.2	
D	12	93	108.1	115.5	-4.0	-0.7	
GR	12	93	89.7	98.5	1.6	0.4	
E	11	93	123.0	112.1	-0.7	-1.5	
F	12	93	115.3	118.3	-3.6	-1.2	
IRL	09	93	149.5	146.7	2.1	3.6	
I	12	93	107.9	116.0	1.8	1.4	
L	11	93	146.7	141.5	0.4	-2.3	
NL	12	93	127.0	123.7	0.8	-1.3	
P	10	93	133.8	130.4	2.9	3.1	
UK	12	93	106.8	115.1	2.9	1.5	
USA	12	93	114.8	118.0	2.2	1.4	
JAP	12	92	116.7	110.1	-6.5	-3.0	
UMSATZ	TURNOVER					CHIFFRE D'AFFAIRES	
NACE 1-4	EUR12	12	92	136.0	131.6	-0.3	-1.1
ABHÄNGIG BESCHÄFTIGTE	NUMBER OF EMPLOYEES					NOMBRE DE SALARIES	
NACE 1-4	EUR12	III	93	87.4	87.9	-10.6	-4.4

¹ % B Letzte 3 Monate gegenüber dem entsprechenden Vorjahreszeitraum Last 3 months compared with corresponding months of previous year

² % A Letzte 3 Monate gegenüber den vorhergehenden 3 Monaten Last 3 months compared with previous 3 months

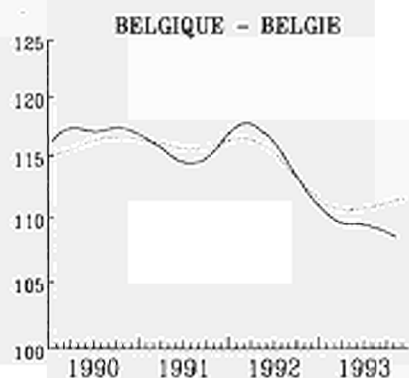
Les 3 derniers mois par rapport aux mois correspondants de l'année précédente

Les 3 derniers mois par rapport aux 3 mois précédents

PRODUKTIONSINDIZES – Saisonbereinigt
INDICES OF PRODUCTION – Seasonally adjusted
INDICES DE PRODUCTION – Désaisonnalisés
1985 = 100

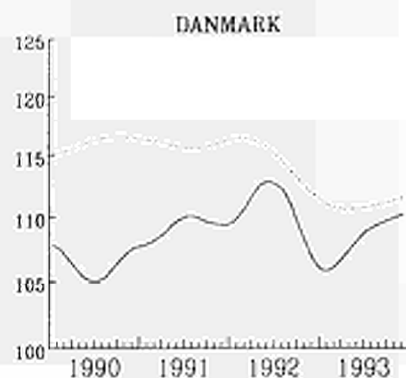
	1991	1992	1993	1993 06	07	08	09	10	11	12	
NACE 1-4											
GESAMTE INDUSTRIE OHNE BAUINDUSTRIE				TOTAL INDUSTRY EXCLUDING CONSTRUCTION				ENSEMBLE DE L'INDUSTRIE SANS BATIMENT			
EUR12	115.7	114.7	110.9	110.1	110.4	111.0	111.1	110.8	111.4	111.4	EUR12
B	115.3	115.3	:	107.9	108.6	110.1	107.9	110.6	105.1	:	B
DK	110.2	112.0	108.9	112.7	109.1	109.1	116.9	109.0	112.0	111.6	DK
D	122.4	121.2	111.8	109.4	108.5	111.5	108.9	108.3	108.7	110.5	D
GR	101.7	100.7	98.2	102.3	97.4	98.3	101.1	97.5	97.2	96.5	GR
E	115.3	112.1	:	105.4	105.7	107.7	107.3	104.6	106.7	:	E
F	114.2	112.9	108.2	109.4	110.1	109.1	109.2	108.7	110.1	110.9	F
IRL	148.5	162.1	:	161.3	169.4	173.9	172.3	:	:	:	IRL
I	115.4	113.7	110.7	109.8	110.8	108.9	110.4	111.4	110.9	109.5	I
L	118.7	117.6	:	118.0	116.9	99.2	114.3	116.2	109.5	:	L
NL	113.2	113.0	112.0	112.0	113.0	112.0	115.0	113.0	113.0	108.0	NL
P	135.1	132.1	:	121.9	123.1	128.2	123.4	123.1	:	:	P
UK	104.9	104.5	107.3	110.7	112.2	112.1	112.2	113.7	113.9	113.2	UK
USA	110.2	112.8	117.5	117.0	117.5	117.7	117.9	118.6	119.7	120.5	USA
JAP	127.7	120.4	115.4	116.2	115.6	114.6	117.0	110.9	113.4	111.8	JAP
GRUNDSTOFFE UND PRODUKTIONSGÜTER				INTERMEDIATE GOODS				BIENS INTERMEDIAIRES			
EUR12	111.9	111.5	109.0	107.8	108.2	108.7	109.0	109.7	111.2	111.5	EUR12
USA	109.6	112.1	116.1	115.3	116.5	116.9	116.6	117.2	118.0	118.3	USA
JAP	127.3	120.5	116.6	118.1	117.7	116.4	117.5	113.3	115.2	113.8	JAP
INVESTITIONSGÜTER				CAPITAL GOODS INDUSTRIES				BIENS D'INVESTISSEMENT			
EUR12	118.8	114.4	108.2	107.5	107.4	107.6	108.0	107.7	106.9	106.0	EUR12
USA	114.9	117.3	125.1	124.4	125.0	125.1	126.4	127.2	128.6	130.0	USA
JAP	138.1	123.0	113.3	111.5	112.6	112.7	116.9	105.5	107.7	106.5	JAP
VERBRAUCHSGÜTER				CONSUMER GOODS				BIENS DE CONSOMMATION			
EUR12	118.9	119.1	115.9	114.7	115.3	115.7	115.8	115.1	116.5	117.4	EUR12
USA	109.7	112.8	116.2	115.3	116.2	115.9	115.8	116.8	117.9	118.0	USA
JAP	118.9	114.1	:	:	:	:	:	:	:	:	JAP

INDUSTRIELLE PRODUKTION
LANGFRISTIGER TREND

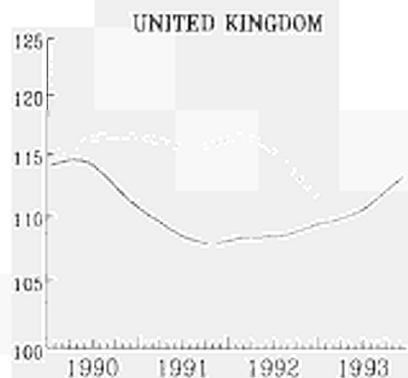
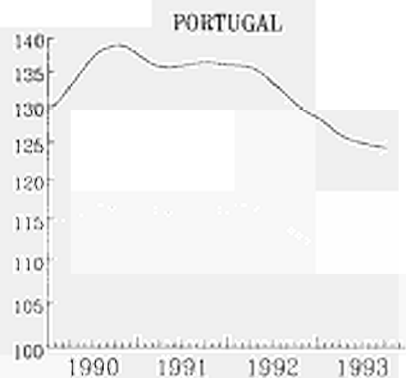
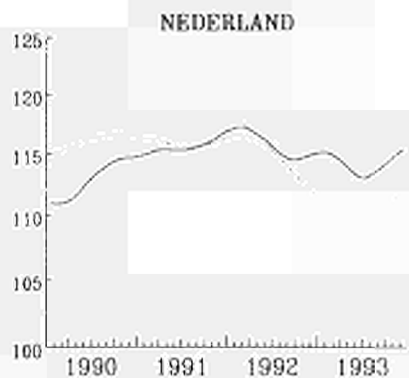
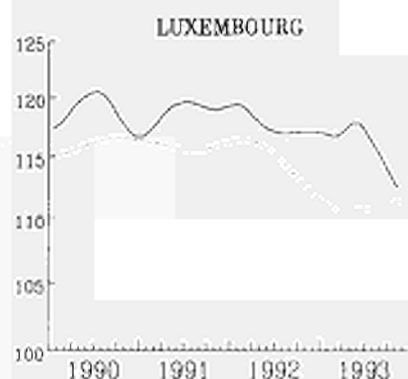
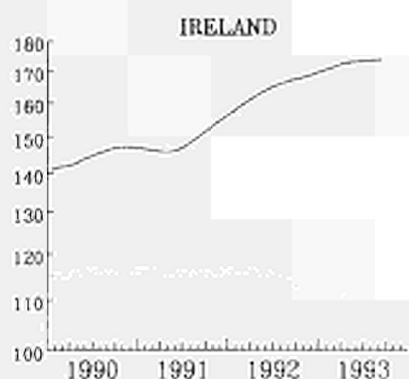
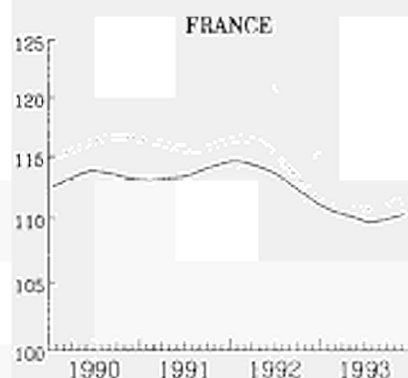
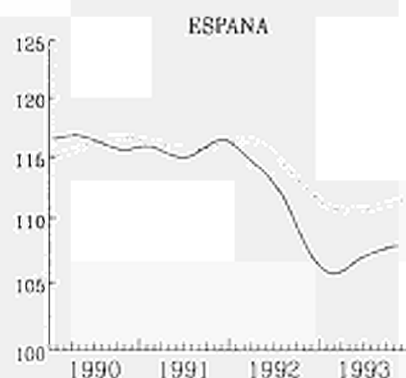
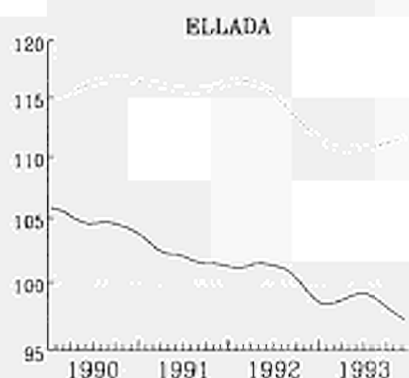
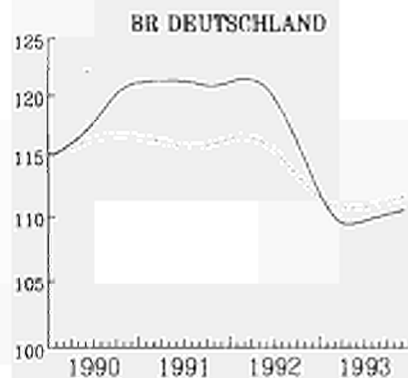


INDUSTRIAL PRODUCTION
LONG TERM TREND

NACE 1-4 1985=100



PRODUCTION INDUSTRIELLE
TENDANCE A LONG TERME



— EDR 12

SEMI-LOGARITHMIC SCALE

EINFACH-LOGARITHMISCHE SKALA

DEBILJE SKALA - LOGARITMIČNA

PRODUKTIONSINDIZES – Pro Arbeitstag
INDICES OF PRODUCTION – Per working day
INDICES DE PRODUCTION – Par jour ouvrable

1985 = 100

	1991	1992	1993	1992	11	12	1993	11	12	
				10			10			

NACE 1-4

GESAMTE INDUSTRIE OHNE BAUINDUSTRIE

TOTAL INDUSTRY EXCLUDING CONSTRUCTION

ENSEMBLE DE L'INDUSTRIE SANS BATIMENT

	1991	1992	1993	1992	11	12	1993	11	12	
EUR12	115.7	114.7	110.9	121.2	119.9	107.3	117.8	119.6	108.2	EUR12
B	115.3	115.3	:	117.6	123.2	101.4	115.3	114.3	:	B
DK	110.2	112.0	108.9	118.9	112.0	108.0	117.0	118.0	109.0	DK
D	122.4	121.2	111.8	127.5	120.1	107.7	119.9	115.3	106.3	D
GR	101.7	100.7	98.2	105.2	105.0	96.8	103.5	101.9	93.9	GR
E	115.3	112.1	:	117.4	113.6	101.1	113.5	116.3	:	E
F	114.2	112.9	108.2	117.6	117.9	109.9	112.3	117.7	110.2	F
IRL	148.5	162.1	:	173.5	177.4	155.0	:	:	:	IRL
I	115.4	113.7	110.7	119.8	121.8	102.1	118.3	121.7	104.3	I
L	118.7	117.6	:	122.6	124.8	105.7	118.6	113.5	:	L
NL	113.2	113.0	112.0	121.0	121.0	116.0	117.0	124.0	118.0	NL
P	135.1	132.1	:	134.4	135.4	122.6	128.1	:	:	P
UK	104.9	104.5	107.3	114.9	117.7	106.6	117.7	123.2	110.4	UK
USA	110.2	112.8	117.5	115.8	114.3	113.5	120.6	119.1	118.1	USA
JAP	127.7	120.4	115.4	121.7	118.7	119.5	114.2	115.2	114.8	JAP

GRUNDSTOFFE UND PRODUKTIONSGÜTER

INTERMEDIATE GOODS

BIENS INTERMEDIAIRES

	1991	1992	1993	1992	11	12	1993	11	12	
EUR12	111.9	111.5	109.0	117.2	116.3	102.0	115.7	118.5	105.2	EUR12
USA	109.6	112.1	116.1	116.0	112.7	110.8	120.2	117.2	114.7	USA
JAP	127.3	120.5	116.6	124.0	120.8	118.1	118.1	118.3	115.3	JAP

INVESTITIONSGÜTER

CAPITAL GOODS INDUSTRIES

BIENS D'INVESTISSEMENT

	1991	1992	1993	1992	11	12	1993	11	12	
EUR12	118.8	114.4	108.2	118.1	118.4	114.7	112.4	112.8	110.2	EUR12
USA	114.9	117.3	125.1	122.1	120.8	119.7	130.5	128.1	127.1	USA
JAP	138.1	123.0	113.3	118.7	113.2	120.8	103.6	104.8	110.1	JAP

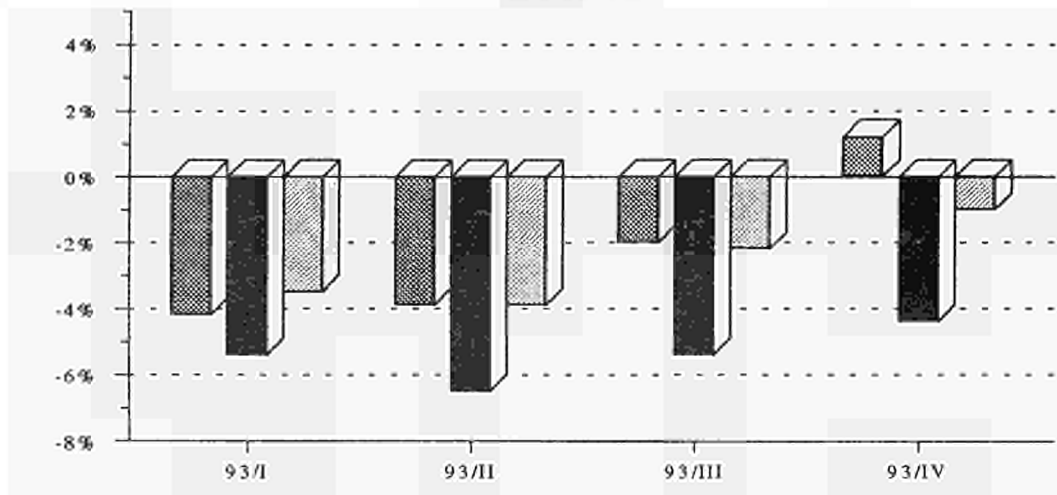
VERBRAUCHSGÜTER

CONSUMER GOODS

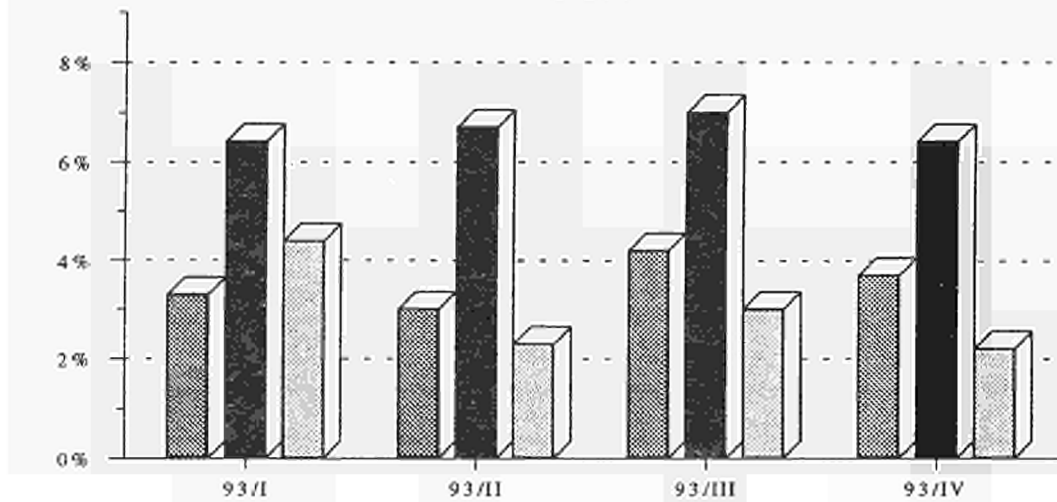
BIENS DE CONSOMMATION

	1991	1992	1993	1992	11	12	1993	11	12	
EUR12	118.9	119.1	115.9	129.1	125.9	109.0	125.0	125.6	110.2	EUR12
USA	109.7	112.8	116.2	117.0	113.6	112.7	119.6	116.4	114.8	USA
JAP	118.9	114.1	:	117.1	115.4	116.7	:	:	:	JAP

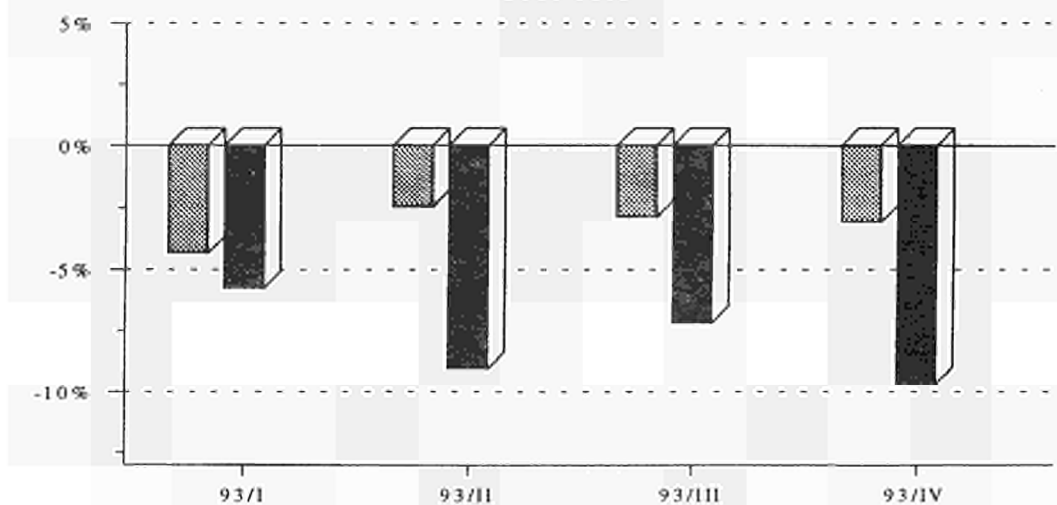
EUR 12






USA



JAPAN



 Grundstoffe und Produktionsgüter
 Investitionsgüter
 Verbrauchsgüter

Intermediate goods
 Capital goods
 Consumption goods

Biens intermédiaires
 Biens d'investissement
 Biens de consommation

ERZEUGERPREISINDEX

PRODUCER PRICE INDEX

INDICE DES PRIX A LA PRODUCTION

EUR 12 - 1985 = 100

IN LANDESWAERHUNGEN

- Industrie NACE 1-4
- Rohstoffe und Halbwaren
- Investitionsgueter
- Verbrauchsgueter

IN ECU

- Industrie NACE 1-4

BASED ON NATIONAL CURRENCIES

- Industry NACE 1-4
- Intermediate Goods
- Capital Goods
- Consumer Goods

IN ECU

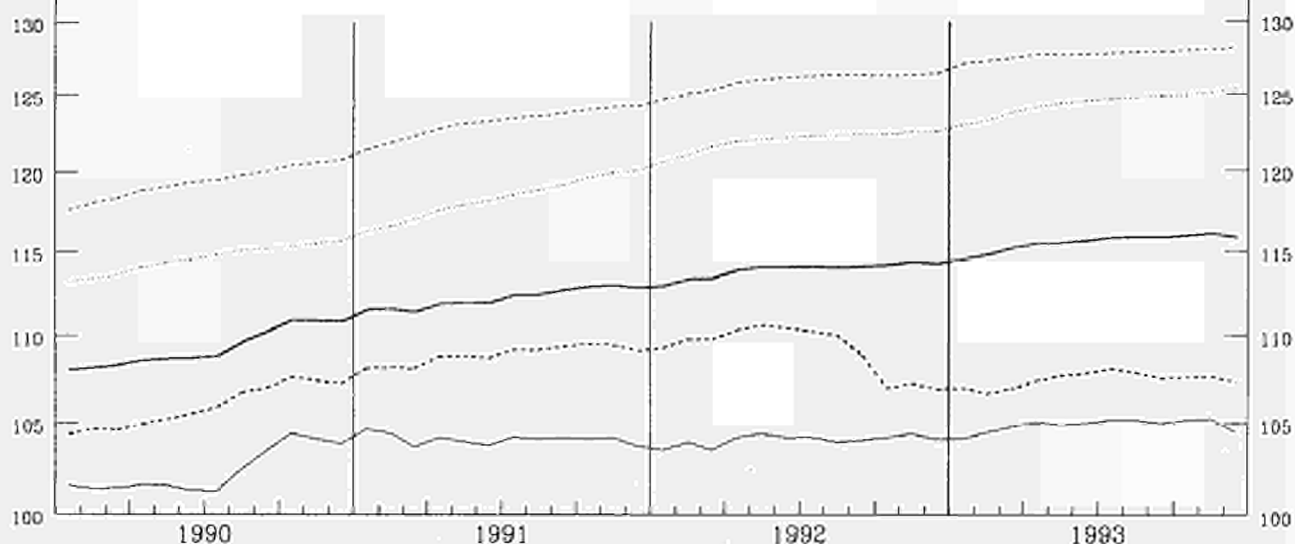
- Industry NACE 1-4

BASE SUR MONNAIES NATIONALES

- Industrie NACE 1-4
- Biens Intermediaires
- Biens d'Investissement
- Biens de Consommation

EN ECU

- Industrie NACE 1-4



EINFACH-LOGARITHMISCHE SKALA

SEMI-LOGARITHMIC SCALE

ECHELLE SEMI-LOGARITHMIQUE

VERAENDERUNG % T/T-12

VARIATION % T/T-12

VARIATION % T/T-12

IN LANDESWAERHUNGEN

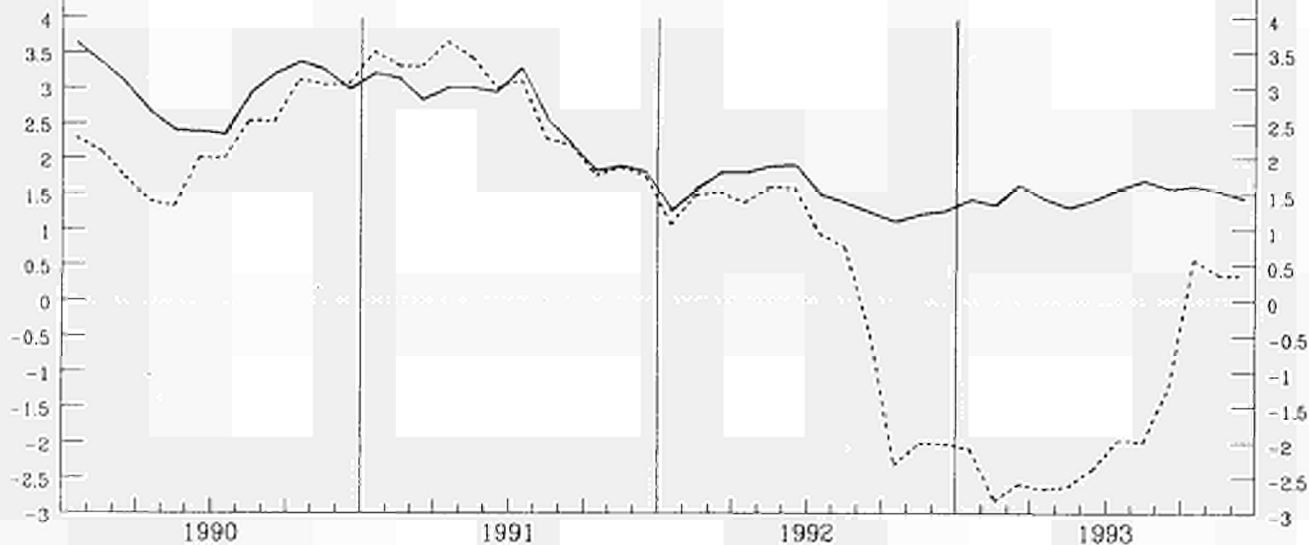
-
-

BASED ON NATIONAL CURRENCIES

IN ECU

BASE SUR MONNAIES NATIONALES

EN ECU



PREISINDIZES - PRICE INDICES - INDICES DE PRIX

**GESAMTE INDUSTRIE OHNE BAUINDUSTRIE
TOTAL INDUSTRY EXCLUDING CONSTRUCTION
ENSEMBLE DE L'INDUSTRIE SANS BATIMENT**

NACE 1-4

1985 = 100

	Jährlich Annual Annuelles		Monatlich Monthly Mensuel							Letzte Zahl Latest figure Dernier chiffre		
	1992	1993	1993 06	07	08	09	10	11	12	% T/T-12	% T/T-1	

IN LANDESWÄHRUNG

IN NATIONAL CURRENCY

EXPRIMES EN MONNAIE NATIONALE

EUR12	113.8	115.5	115.6	115.8	115.9	115.8	116.0	116.1	115.8	1.4	-0.2	EUR12
B	92.8	91.9	91.7	92.0	92.0	91.9	92.2	92.3	91.8	0.1	-0.5	B
DK	108.6	107.7	108.0	108.0	108.0	107.0	107.0	108.0	107.0	-0.9	-0.9	DK
D	104.8	104.8	104.8	104.9	104.8	104.6	104.6	104.6	104.5	-0.1	-0.1	D
GR	247.9	:	274.6	276.4	278.5	280.1	282.9	283.5	:	7.8	0.2	GR
E	114.8	:	117.0	117.6	118.1	118.3	118.7	118.8	:	3.2	0.1	E
F ¹	109.5	109.3	109.3	109.4	109.4	109.5	109.5	109.4	109.4	0.5	0.0	F ¹
IRL	116.6	:	119.7	119.9	119.9	119.9	120.0	:	:	2.4	0.1	IRL
I	124.0	128.7	129.0	129.1	129.4	129.5	129.7	130.0	130.0	3.7	0.0	I
L	93.7	92.5	92.1	93.0	93.5	93.1	94.2	93.9	93.7	2.1	-0.2	L
NL	90.1	88.9	89.1	89.0	88.9	88.7	88.6	88.7	88.7	-1.2	0.0	NL
P	:	:	:	:	:	:	:	:	:	:	:	P
UK	125.3	129.4	129.7	130.1	130.0	129.9	130.1	130.3	129.2	1.9	0.3	UK
USA	113.6	115.3	115.9	115.6	115.1	115.1	115.5	115.3	114.8	0.7	-0.4	USA
JAP	95.9	94.3	94.5	94.3	94.1	93.8	93.5	93.4	93.2	-2.2	-0.2	JAP

IN ECU

IN ECU

EXPRIMES EN ECU

EUR12	109.2	107.4	107.8	108.0	107.8	107.5	107.6	107.6	107.3	0.4	-0.3	EUR12
B	100.2	102.0	102.4	102.5	101.4	100.5	99.8	101.4	102.3	0.1	0.9	B
DK	111.5	113.8	115.6	114.6	110.6	109.5	111.2	113.4	113.4	-0.8	0.0	DK
D	115.5	120.4	119.3	119.7	121.4	121.8	122.1	121.3	120.5	1.4	-0.7	D
GR	105.2	:	108.0	108.5	108.4	107.2	107.3	108.1	:	0.1	0.7	GR
E	111.9	:	100.4	99.1	96.9	99.1	99.6	98.9	:	-6.1	-0.7	E
F ¹	108.7	111.9	112.8	111.9	110.6	111.2	111.2	111.5	112.6	1.7	1.0	F ¹
IRL	109.7	:	106.8	106.3	105.3	104.4	105.8	:	:	-5.7	1.3	IRL
I	112.7	101.2	105.0	103.7	102.9	101.3	100.7	99.9	98.7	-4.8	-1.3	I
L	101.1	102.7	102.9	103.7	103.1	101.9	102.0	103.1	104.4	2.1	1.2	L
NL	99.4	102.7	102.0	101.9	103.3	103.8	103.8	103.4	103.0	0.6	-0.4	NL
P	:	:	:	:	:	:	:	:	:	:	:	P
UK	100.3	97.7	97.4	100.7	100.7	98.9	98.9	100.6	100.4	8.0	1.7	UK

¹ Schätzung - Estimation Eurostat

1985 = 100

	EUR12	B	DK	D	GR	E	F	IRL	I	L	NL	P	UK	USA	JAP	
PRODUKTIONSINDIZES		INDICES OF PRODUCTION										INDICES DE PRODUCTION				
1987	104.5	103.0	102.8	102.8	98.1	107.9	102.9	111.2	106.9	101.2	101.1	112.0	102.4	105.9	103.3	
1988	109.3	109.0	104.8	107.4	103.7	111.1	107.7	123.1	114.2	110.0	103.6	116.2	107.3	110.6	114.7	
1989	113.7	112.7	107.3	113.0	105.3	116.1	112.1	137.3	118.7	118.7	107.9	124.1	109.6	112.3	120.3	
1990	115.9	117.7	107.8	118.7	103.3	116.2	114.2	143.8	117.9	118.1	110.1	135.3	109.3	112.3	125.4	
1991	115.7	115.3	110.2	122.4	101.7	115.3	114.2	148.5	115.4	118.7	113.2	135.1	104.9	110.2	127.7	
1992	114.7	115.3	112.0	121.2	100.7	112.1	112.9	162.1	113.7	117.6	113.0	132.1	104.5	112.8	120.4	
1993	110.9		108.9	111.8	98.2		108.2		110.7		112.0		107.3	117.5	115.4	
UMSATZ		TURNOVER										CHIFFRE D'AFFAIRES				
Saisonbereinigt		Seasonally adjusted										Désaisonnalisés				
1993	05	116.3	113.0	120.7			119.9	169.4		104.2			139.8	130.7	114.5	
	06	121.8	119.9	119.4			125.4	162.4		116.9			137.2	132.9	117.5	
	07	119.2	116.2	119.5			123.9	168.2		117.0			141.0	129.5	117.5	
	08		116.9	123.1			129.7	176.4		108.3			140.5	132.0	116.0	
	09		122.3	119.4			124.3	166.4		120.4			141.3	133.8	120.1	
	10		117.3	118.0						107.5			141.7	134.0	112.9	
	11		121.1	118.4						120.3			142.8	136.6	114.0	
	12		125.6	120.1									141.7	138.5	113.6	
AUSFUHR		EXPORTS										EXPORTATIONS				
Mengen, Saisonbereinigt		Volumes, seasonally adjusted										En volume, désaisonnalisés				
1992	09	100.8	154.7	112.7	130.0	144.7	138.7	163.5	103.1		124.6	183.3	118.2			
	10	98.6	153.4	110.1	149.6	140.9	126.4	172.3	99.6		121.6	174.6	115.3			
	11	95.3	151.5	103.2	136.3	119.3	130.3	172.2	97.3		117.2	164.2	114.3			
	12	101.0	143.9	107.3	138.3	137.5	136.0	171.2	99.7		124.7	159.4	114.6			
1993	01	92.3														
	02	101.7														
	03	107.2														
	04	104.5														
	05	103.8														
	06	115.0														
	07	105.9														
	08	106.4														
	09	106.1														
EINFUHR		IMPORTS										IMPORTATIONS				
Mengen, Saisonbereinigt		Volumes, seasonally adjusted										En volume, désaisonnalisés				
1992	09	159.2	134.3	165.6	131.7	254.1	160.3	134.3	130.5		133.9	313.6	123.9			
	10	150.2	120.8	158.7	140.4	242.5	148.2	132.6	118.7		130.2	282.5	115.9			
	11	147.7	119.7	161.1	120.6	204.4	148.8	132.3	119.2		127.3	287.3	118.4			
	12	158.3	131.3	170.9	172.7	243.4	153.3	137.2	123.2		140.2	289.0	120.6			
1993	01	137.1														
	02	150.4														
	03	157.5														
	04	150.6														
	05	143.7														
	06	152.9														
	07	145.0														
	08	151.6														
	09	144.9														
ERZEUGERPREISINDIZES		PRODUCER PRICE INDICES										INDICE DE PRIX A LA PRODUCTION				
1992	12	114.2	91.8	108.0	104.6	263.0	115.2	108.9	117.5	125.4	91.7	89.8	126.8	114.0	95.3	
1993	01	114.5	91.4	108.0	104.8	266.6	116.1	108.9	117.4	126.4	91.2	89.0	127.0	114.4	95.2	
	02	114.8	91.4	107.0	104.8	268.8	116.2	108.8	117.6	126.9	91.0	89.1	128.3	114.8	95.2	
	03	115.2	91.8	108.0	104.9	271.8	116.4	109.0	118.8	127.6	91.1	89.2	129.2	115.1	95.0	
	04	115.5	92.2	108.0	105.0	274.2	116.5	109.1	119.1	128.3	90.9	89.1	129.6	115.7	94.8	
	05	115.5	91.9	108.0	104.8	274.8	116.8	109.3	119.5	128.5	92.1	89.2	129.5	116.0	94.6	
	06	115.6	91.7	108.0	104.8	274.6	117.0	109.3	119.7	129.0	92.1	89.1	129.7	115.9	94.5	
	07	115.8	92.0	108.0	104.9	276.4	117.6	109.4	119.9	129.1	93.0	89.0	130.1	115.6	94.3	
	08	115.9	92.0	108.0	104.8	278.5	118.1	109.4	119.9	129.4	93.5	88.9	130.0	115.1	94.1	
	09	115.8	91.9	107.0	104.6	280.1	118.3	109.5	119.9	129.5	93.1	88.7	129.9	115.1	93.8	
	10	116.0	92.2	107.0	104.6	282.9	118.7	109.5	120.0	129.7	94.2	88.6	130.1	115.5	93.5	
	11	116.1	92.3	108.0	104.6	283.5	118.8	109.4		130.0	93.9	88.7	130.3	115.3	93.4	
	12	115.8	91.8	107.0	104.5		109.4		130.0	93.7	88.7		129.2	114.8	93.2	
ABHÄNGIG BESCHÄFTIGTE		NUMBER OF EMPLOYEES										NOMBRE DE SALARIES				
Saisonbereinigt		Seasonally adjusted										Désaisonnalisés				
1992	12	90.4	90.4	93.2	102.8	86.5	102.7	90.0	99.3	78.3	93.1	104.4	80.3	78.3	93.7	107.2
1993	01	90.0	89.4	92.6	102.4	85.2	101.3	89.6	99.6	78.0	92.0		79.7	78.0	93.8	
	02	89.6	89.1	92.2	101.7	84.1	100.0	89.3	99.8	77.8	91.2		78.9	78.1		
	03	89.3	88.6	91.9	101.2	83.7	99.4	88.9	99.0	77.5	91.2		78.4	78.2		
	04	88.9	88.4	91.3	100.5	83.9	98.8	88.5		77.4	90.7		77.4	78.0		
	05	88.5	88.1	90.9	99.9	83.8	98.4	88.0		77.1	90.4		76.3	77.9		
	06	88.2	87.7	90.6	99.3	83.0	98.1	87.7		76.8	90.1		74.8	78.1		
	07	87.8	87.2	90.1	98.1		97.9	87.5		76.5	90.2		74.9	77.9		
	08	87.4		89.5	97.7		97.5	87.3		76.2	89.5			77.6		
	09	87.2		89.5	97.2		96.9	87.2		76.0	89.0			77.5		
	10			89.9	96.5		96.1			75.7	88.8			77.3		
	11			90.1	95.9		95.3				88.6			77.3		
	12			90.3			94.8							76.9		

PRODUKTIONSINDIZES - BE- UND VERARBEITENDES GEWERBE PRODUCTION INDICES - MANUFACTURING INDUSTRIES INDICES DE PRODUCTION - INDUSTRIES MANUFACTURIERES

Veränderungsraten von Monat zu Monat (in Prozent)
Month to month change (in percent)
Variation (en pourcent) de mois en mois

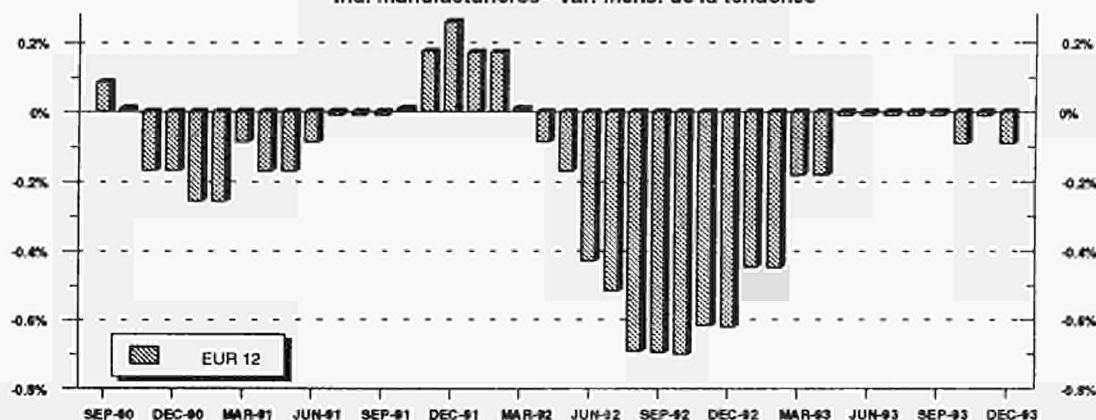
Saisonbereinigte Werte - seasonally adjusted values - valeurs corrigées de var. saisonnières

	03/93	04/93	05/93	06/93	07/93	08/93	09/93	10/93	11/93	12/93	
EUR12	0.7	-1	0.9	-0.8	0	0.6	-0.3	-0.3	-0.1		EUR12
Be	-1.3	1.5	-0.2	-1.1	-0.3	2.4	-2.2	2.2	-5.2		B
DK	6.6	-6.5	-8.9	15.8	-2.4	-0.8	5.1	-5.1	3.3	-0.4	DK
D	2.2	-2	0.7	-0.6	-0.9	2.9	-2.4	-0.6	0.3	1.9	D
GR	0	1.1	-1	3.9	-5.8	0.9	2.5	-2.3	-0.3	-2.1	GR
E	2.8	-2.8	1.3	0.4	1.7	0.4					E
F	-0.6	-0.6	0.1	-0.4	0.2	-0.6	-0.2	-0.8	1	1.6	F
IRL	0.7	1.8	-1.6	-6	4.9	1.2	-2.4				IRL
I	-1.4	-0.1	1.7	-2.9	1.5	-1.7	1.8	1.3	-0.8	-1	I
L	0.6	-0.9	6.8	-4.9	-0.1	-16.3	15.2	2.3			L
NL	0.9	-1.7	0.9	-0.9	0.9	-0.9	1.7	-2.6	-1.8	-1.8	NL
P	2.3	-1.1	-1.4	-0.3	-0.7	1.2	-0.5	-4.2			P
UK	-0.5	0.3	1.4	-2.2	1.4	-0.6	0.3	0.5	0	-0.5	UK
USA	0.2	0.7	-0.2	0.1	0.4	0.1	0.3	0.8	1.1	0.6	USA
JAP	2.5	-2.8	-2.4	1.9	-0.3	-1.3	2.2	-5.4	2.1	-1.8	JAP

Langfristiger Trend - long term trend - tendance à long terme

	03/93	04/93	05/93	06/93	07/93	08/93	09/93	10/93	11/93	12/93	
EU12	-0.3	-0.1	0	0	0	0	0	0	0	0	EU12
B	-0.5	-0.2	0	0.1	0	-0.1	-0.1	-0.2	-0.2		B
DK	0.4	0.6	0.6	0.6	0.4	0.2	0.2	0.2	0.2	0.2	DK
D	-0.6	-0.2	0.2	0.3	0.2	0.1	0.1	0	0	0	D
GR	0.1	0.1	0.1	0.1	-0.1	-0.4	-0.5	-0.5	-0.6	-0.6	GR
E	0	0.4	0.5	0.6	0.7	0.7					E
F	-0.3	-0.2	-0.2	-0.3	-0.2	-0.1	0	0	0	0.1	F
IRL	0.4	0.3	-0.1	-0.2	-0.2	-0.2	-0.3				IRL
I	-0.3	-0.3	-0.2	-0.1	0	0.1	0.1	0.1	0.1	0.1	I
L	0.6	1	0.8	-0.1	-1.3	-1.4	-1.5	-1.5	-1.6		L
NL	-0.2	-0.1	0	0	0	-0.1	-0.2	-0.2	-0.3	-0.3	NL
P	-0.5	-0.4	-0.2	-0.1	-0.1	-0.1	-0.1	-0.1			P
UK	0.1	0.1	0.1	0.1	0.1	0.2	0.2	0.1	0.1	0.1	UK
USA	0.4	0.3	0.3	0.3	0.4	0.4	0.4	0.4	0.4	0.4	USA
JAP	-0.1	0	-0.1	-0.3	-0.5	-0.6	-0.7	-0.7	-0.7	-0.7	JAP

Verarb. Gewerbe - Trendwachstum Monat zu Monat
Manufacturing - Monthly Change in Trend
Ind. manufacturières - var. mens. de la tendance



Saisonbereinigte Reihen enthalten irreguläre Effekte und Ausreißer, die die langfristige Konjunktorentwicklung überdecken. Der langfristige Trend dagegen zeigt allein die Richtung der konjunkturellen Entwicklung. Er wird durch mehrmalige Anwendung gleitender Durchschnitt berechnet, wodurch die irregulären Effekte eliminiert werden. Am aktuellen Rand können allerdings Fehlinterpretationen nicht ausgeschlossen werden, da hier die gleitenden Durchschnitte geschätzt werden müssen.

Seasonally adjusted series still contain irregularities and outliers which mask longer-term trends. Only the long-term trend, however, is an adequate indicator of economic evolution. It is calculated with the aid of repeatedly computing moving averages, thus eliminating the irregularities. As regards the latest figures, however, false interpretations cannot be ruled out, since here the moving averages have to be estimated.

Des séries corrigées des variations saisonnières contiennent toujours des effets irréguliers et des valeurs aberrantes qui masquent l'évolution conjoncturelle à long terme. En revanche, la tendance à long terme ne montre que l'orientation de l'évolution conjoncturelle. La tendance est déterminée à l'aide de calculs répétés de moyennes mobiles, qui permettent d'éliminer les effets irréguliers. Néanmoins, il n'est pas exclu que les toutes dernières valeurs donnent lieu à des erreurs d'interprétation car ici les moyennes mobiles doivent être estimées.

industrieller Produktionsindex

Production Index Industry

Indice de production industrielle

