

1993  19

ISSN 1016-0191

### ELECTRICITY PRICES (HOUSEHOLD) 1 January 1993

A study of the variations in national currency taxes excluded prices since July 1992 reveals that:

- overall, prices remained stable in most member states,
  - the highest recorded rise, all consumers taken together was for Rostock, Lisbon, Madrid and Stuttgart for consumers Db, Dc, Dd and De, and Rotterdam for Da to Dd,
  - a slight fall can be noticed in prices for Luxembourg about 1%, for Belgium, between 0.9% for Da to 0.4% for De and for Nord Brabant in the Netherlands between, 0.4 and 1.1%,
  - the drop in prices mainly concerned Leeds (from -5.9 to -0.6%) and Frankfurt am Main for Da to Dd (from -0.4 to -0.6%),
  - a -2.6% fall for Da in Stuttgart and a -1% fall for De in Rotterdam should also be mentioned.
- During this period, the increase of the VAT rate from 14 to 15% in Germany, from 13 to 15% in Spain and from 18.5 to 17.5% in the Netherlands can equally be noticed.

\*\*\*\*\*

Five household standard consumers, coded Da to De, were chosen:

Standard consumer	Annual consumption kWh		Approx. subscribed demand in kW
	Total	of which night	
Da	600		3
Db	1 200		3 - 4
Dc	3 500	1 300	4 - 9
Dd	7 500	2 500	6 - 9
De	20 000	15 000	9

Prices for the standard consumers are given in national currencies, PPS (purchasing power standard as at 18 March for 1993) and in ECU (average value for January 1993).

B	DK	D	GR	E	F	IRL	I	L	NL	P	UK
BFR	DKR	DM	DRA	PTA	FR	IRL	LIT	LFR	HKL	ESC	UKL
1 PPS =											
41.96	9.659	2.279	203.2	124.8	6.930	0.717	1612	41.75	2.290	138.1	0.687
1 ECU =											
40.31	7.556	1.958	261.8	138.9	6.640	0.742	1818	40.31	2.202	176.4	0.791

Manuscript completed on = 11.06.1993

For further information please contact:  
Eurostat, L-2920 Luxembourg, tel. 4301-32040 Fax: 4301-34771

Price (excl. VAT) in Luxembourg: Subscription ECU 206

Catalogue number: CA-NL-93-019-EN-C

PRIX DE L'ELECTRICITE POUR USAGES DOMESTIQUES

JANUAR 01 JANUARY 1993 JANVIER	NATIONALE WAERHUNG NATIONAL CURRENCY / KWH MONNAIE NATIONALE			KKS	PPS	SPA / 100 KWH	ECUS / 100 KWH		
	STEUERN IMBEGR. WITH TAXES COMPRISES	OHNE MEHRWERT. VAT EXC. HORS TVA	OHNE STEUERN TAXES EXC. HORS TAXES				STEUERN INBEGR. WITH TAXES COMPRISES	OHNE MEHRWERT. VAT EXC. HORS TVA	OHNE STEUERN TAXES EXC. HORS TAXES
VERBRAUCHER-TYPEN STANDARD CONSUMERS CONSOMMATEURS TYPE									
BELGIQUE (BFR) NATIONAL									
DA	9.60	8.03	8.03	22.88	19.14	19.14	23.82	19.92	19.92
DB	8.10	6.78	6.78	19.30	16.16	16.16	20.10	16.82	16.82
DC	5.60	4.69	4.69	13.34	11.18	11.18	13.89	11.64	11.64
DD	5.05	4.23	4.23	12.03	10.08	10.08	12.53	10.49	10.49
DE	3.21	2.69	2.69	7.65	6.41	6.41	7.96	6.67	6.67
DANEMARK (ORE) NATIONAL									
DA	170.74	136.59	99.59	17.76	14.21	10.36	22.54	18.03	13.15
DB	132.04	105.63	68.63	13.73	10.99	7.14	17.43	13.94	9.06
DC	106.63	85.30	48.31	11.09	8.87	5.02	14.08	11.26	6.38
DD	99.16	79.33	42.32	10.31	8.25	4.40	13.09	10.47	5.59
DE	87.53	70.02	35.82	9.10	7.28	3.73	11.55	9.24	4.73
DEUTSCHLAND (PF) DUESSELDORF									
DA	45.33	39.42	36.50	19.90	17.31	16.02	23.16	20.14	18.65
DB	37.26	32.40	30.00	16.36	14.22	13.17	19.04	16.56	15.33
DC	31.53	27.42	25.39	13.84	12.04	11.15	16.11	14.01	12.97
DD	29.09	25.29	23.42	12.77	11.10	10.28	14.86	12.92	11.97
DE	16.39	14.26	13.20	7.20	6.26	5.79	8.38	7.29	6.75
HAMBURG									
DA	53.01	46.09	42.60	23.27	20.23	18.70	27.09	23.55	21.77
DB	39.94	34.73	32.10	17.53	15.25	14.09	20.41	17.75	16.40
DC	29.98	26.07	24.09	13.16	11.44	10.58	15.32	13.32	12.31
DD	26.81	23.31	21.55	11.77	10.23	9.46	13.70	11.91	11.01
DE	15.88	13.81	12.76	6.97	6.06	5.60	8.11	7.06	6.52
HANNOVER									
DA	42.51	36.96	34.26	18.66	16.23	15.04	21.72	18.89	17.51
DB	35.34	30.73	28.48	15.51	13.49	12.50	18.06	15.70	14.55
DC	28.85	25.09	23.25	12.67	11.01	10.21	14.74	12.82	11.88
DD	27.22	23.67	21.94	11.95	10.39	9.63	13.91	12.10	11.21
DE	16.26	14.14	13.10	7.14	6.21	5.75	8.31	7.23	6.69
WESTLICHES GEBIET									
DA	48.31	42.01	38.90	21.21	18.44	17.08	24.69	21.47	19.88
DB	35.83	31.16	28.85	15.73	13.68	12.67	18.31	15.92	14.74
DC	26.91	23.40	21.67	11.81	10.27	9.51	13.75	11.96	11.07
DD	23.93	20.81	19.27	10.51	9.14	8.46	12.23	10.63	9.85
DE	15.15	13.17	12.20	6.65	5.78	5.36	7.74	6.73	6.23
FRANKFURT/M									
DA	39.29	34.16	31.87	17.25	15.00	13.99	20.08	17.46	16.29
DB	34.97	30.41	28.37	15.35	13.35	12.45	17.87	15.54	14.50
DC	28.82	25.06	23.38	12.65	11.00	10.26	14.73	12.81	11.95
DD	27.57	23.98	22.37	12.10	10.53	9.82	14.09	12.25	11.43
DE	14.89	12.95	12.08	6.54	5.69	5.30	7.61	6.62	6.17

## PRIX DE L'ELECTRICITE POUR USAGES DOMESTIQUES

JANUAR 01 JANUARY 1993 JANVIER	NATIONALE WAERHUNG NATIONAL CURRENCY / KWH MONNAIE NATIONALE			KKS	PPS	SPA / 100 KWH	ECUS / 100 KWH		
	STEUERN IMBEGR. WITH TAXES TAXES COMPRISES	OHNE MEHRWERT. VAT EXC. HORS TVA	OHNE STEUERN TAXES EXC. HORS TAXES				STEUERN IMBEGR. WITH TAXES TAXES COMPRISES	OHNE MEHRWERT. VAT EXC. HORS TVA	OHNE STEUERN TAXES EXC. HORS TAXES
VERBRAUCHER-TYPEN	STEUERN	OHNE	OHNE	STEUERN	OHNE	OHNE	STEUERN	OHNE	OHNE
STANDARD CONSUMERS	IMBEGR.	MEHRWERT.	STEUERN	IMBEGR.	MEHRWERT.	STEUERN	IMBEGR.	MEHRWERT.	STEUERN
CONSOUMATEURS TYPE	WITH	VAT	TAXES	WITH	VAT	TAXES	WITH	VAT	TAXES
	TAXES	EXC.	EXC.	TAXES	EXC.	EXC.	TAXES	EXC.	EXC.
	TAXES	HORS	HORS	TAXES	HORS	HORS	TAXES	HORS	HORS
	COMPRISES	TVA	TAXES	COMPRISES	TVA	TAXES	COMPRISES	TVA	TAXES
DEUTSCHLAND (PF)					STUTT GART				
DA	59.08	51.37	48.10	25.94	22.55	21.12	30.19	26.25	24.58
DB	43.36	37.70	35.30	19.04	16.55	15.50	22.16	19.26	18.04
DC	29.93	26.03	24.37	13.14	11.43	10.70	15.29	13.30	12.45
DD	26.86	23.36	21.87	11.79	10.26	9.60	13.73	11.94	11.18
DE	15.39	13.38	12.53	6.76	5.87	5.50	7.86	6.84	6.40
MUE NCHEN									
DA	40.02	34.80	32.40	17.57	15.28	14.22	20.45	17.78	16.56
DB	36.93	32.11	29.90	16.21	14.10	13.13	18.87	16.41	15.28
DC	32.03	27.86	25.94	14.06	12.23	11.39	16.37	14.24	13.26
DD	31.05	27.00	25.14	13.63	11.85	11.04	15.87	13.80	12.85
DE	16.77	14.58	13.58	7.36	6.40	5.96	8.57	7.45	6.94
SUEDLICHES GEBIET									
DA	65.34	56.81	52.90	28.68	24.94	23.22	33.39	29.03	27.03
DB	47.18	41.03	38.20	20.71	18.01	16.77	24.11	20.97	19.52
DC	32.95	28.65	26.68	14.47	12.58	11.71	16.84	14.64	13.63
DD	29.38	25.55	23.79	12.90	11.22	10.44	15.01	13.06	12.16
DE	17.18	14.94	13.91	7.54	6.56	6.11	8.78	7.63	7.11
ELLAS (DRA)					ATHINAI				
DA	25.13	21.30	21.30	12.36	10.48	10.48	9.60	8.14	8.14
DB	23.91	20.26	20.26	11.76	9.97	9.97	9.13	7.74	7.74
DC	20.91	17.72	17.72	10.29	8.72	8.72	7.99	6.77	6.77
DD	21.68	18.37	18.37	10.67	9.04	9.04	8.28	7.02	7.02
DE	15.94	13.51	13.51	7.84	6.65	6.65	6.09	5.16	5.16
ESPANA (PTA)					MADRID				
DA	23.98	20.85	20.85	19.21	16.70	16.70	17.27	15.01	15.01
DB	23.98	20.85	20.85	19.21	16.70	16.70	17.27	15.01	15.01
DC	18.71	16.27	16.27	14.99	13.03	13.03	13.47	11.71	11.71
DD	17.17	14.93	14.93	13.75	11.96	11.96	12.36	10.75	10.75
DE	12.19	10.60	10.60	9.76	8.49	8.49	8.78	7.63	7.63
FRANCE (CENT.)					PARIS				
DA	115.51	100.03	90.48	16.63	14.40	13.03	17.44	15.10	13.66
DB	101.39	86.81	78.52	14.60	12.50	11.31	15.31	13.11	11.86
DC	86.14	74.83	67.68	12.40	10.78	9.75	13.01	11.30	10.22
DD	82.22	71.05	64.26	11.84	10.23	9.25	12.42	10.73	9.70
DE	65.82	56.94	51.51	9.48	8.20	7.42	9.94	8.60	7.78
LILLE									
DA	114.48	99.17	90.48	16.49	14.28	13.03	17.29	14.97	13.66
DB	100.50	86.06	78.52	14.47	12.39	11.31	15.18	13.00	11.86
DC	85.37	74.18	67.68	12.29	10.68	9.75	12.89	11.20	10.22
DD	81.49	70.43	64.26	11.73	10.14	9.25	12.30	10.63	9.70
DE	65.24	56.45	51.51	9.39	8.13	7.42	9.85	8.52	7.78

## PRIX DE L'ELECTRICITE POUR USAGES DOMESTIQUES

JANUAR 01 JANUARY 1993 JANVIER	NATIONALE WAERUNG NATIONAL CURRENCY / KWH MONNAIE NATIONALE			KKS	PPS	SPA / 100 KWH	ECUS / 100 KWH		
	VERBRAUCHER-TYPEN STANDARD CONSUMERS CONSUMMATEURS TYPE	STEUERN IMBEGR. TAXES COMPRISES	OHNE MEHRWERT. VAT TVA				OHNE STEUERN TAXES	STEUERN INBEGR. TAXES COMPRISES	OHNE MEHRWERT. VAT TVA
FRANCE (CENT.)									
DA	107.61	93.38	90.48	15.50	13.45	13.03	16.25	14.10	13.66
DB	94.54	81.03	78.52	13.61	11.67	11.31	14.28	12.24	11.86
DC	80.23	69.85	67.68	11.55	10.06	9.75	12.11	10.55	10.22
DD	76.61	66.32	64.26	11.03	9.55	9.25	11.57	10.01	9.70
DE	61.33	53.15	51.51	8.83	7.65	7.42	9.26	8.03	7.78
STRASBOURG									
DA	114.48	99.17	90.48	16.49	14.28	13.03	17.29	14.97	13.66
DB	100.50	86.06	78.52	14.47	12.39	11.31	15.18	13.00	11.86
DC	85.37	74.18	67.68	12.29	10.68	9.75	12.89	11.20	10.22
DD	81.49	70.43	64.26	11.73	10.14	9.25	12.30	10.63	9.70
DE	65.24	56.45	51.51	9.39	8.13	7.42	9.85	8.52	7.78
LYON									
DA	114.48	99.17	90.48	16.49	14.28	13.03	17.29	14.97	13.66
DB	100.50	86.06	78.52	14.47	12.39	11.31	15.18	13.00	11.86
DC	85.37	74.18	67.68	12.29	10.68	9.75	12.89	11.20	10.22
DD	81.49	70.43	64.26	11.73	10.14	9.25	12.30	10.63	9.70
DE	65.24	56.45	51.51	9.39	8.13	7.42	9.85	8.52	7.78
MARSEILLE									
DA	114.48	99.17	90.48	16.49	14.28	13.03	17.29	14.97	13.66
DB	100.50	86.06	78.52	14.47	12.39	11.31	15.18	13.00	11.86
DC	85.37	74.18	67.68	12.29	10.68	9.75	12.89	11.20	10.22
DD	81.49	70.43	64.26	11.73	10.14	9.25	12.30	10.63	9.70
DE	65.24	56.45	51.51	9.39	8.13	7.42	9.85	8.52	7.78
TOULOUSE									
DA	114.48	99.17	90.48	16.49	14.28	13.03	17.29	14.97	13.66
DB	100.50	86.06	78.52	14.47	12.39	11.31	15.18	13.00	11.86
DC	85.37	74.18	67.68	12.29	10.68	9.75	12.89	11.20	10.22
DD	81.49	70.43	64.26	11.73	10.14	9.25	12.30	10.63	9.70
DE	65.24	56.45	51.51	9.39	8.13	7.42	9.85	8.52	7.78
IRELAND (P)									
DUBLIN									
DA	11.239	9.990	9.990	15.68	13.94	13.94	15.15	13.47	13.47
DB	9.444	8.395	8.395	13.17	11.71	11.71	12.73	11.32	11.32
DC	6.578	5.847	5.847	9.18	8.16	8.16	8.87	7.88	7.88
DD	6.423	5.709	5.709	8.96	7.96	7.96	8.66	7.70	7.70
DE	4.350	3.867	3.867	6.07	5.39	5.39	5.86	5.21	5.21
ITALIA (LIT)									
SETTENTRIONALE E CENTRALE									
DA	123.50	113.30	113.30	7.66	7.02	7.02	6.79	6.23	6.23
DB	140.34	128.75	128.75	8.70	7.98	7.98	7.72	7.08	7.08
DC	369.87	339.33	299.23	22.93	21.04	18.55	20.34	18.66	16.46
DD	339.80	311.74	271.64	21.07	19.33	16.84	18.69	17.15	14.94
DE									
MERIDIONALE E INSULARE									
DA	123.50	113.30	113.30	7.66	7.02	7.02	6.79	6.23	6.23
DB	140.34	128.75	128.75	8.70	7.98	7.98	7.72	7.08	7.08
DC	367.64	337.28	299.23	22.79	20.91	18.55	20.22	18.55	16.46
DD	337.56	309.69	271.64	20.93	19.20	16.84	18.57	17.03	14.94
DE									

## PRIX DE L'ELECTRICITE POUR USAGES DOMESTIQUES

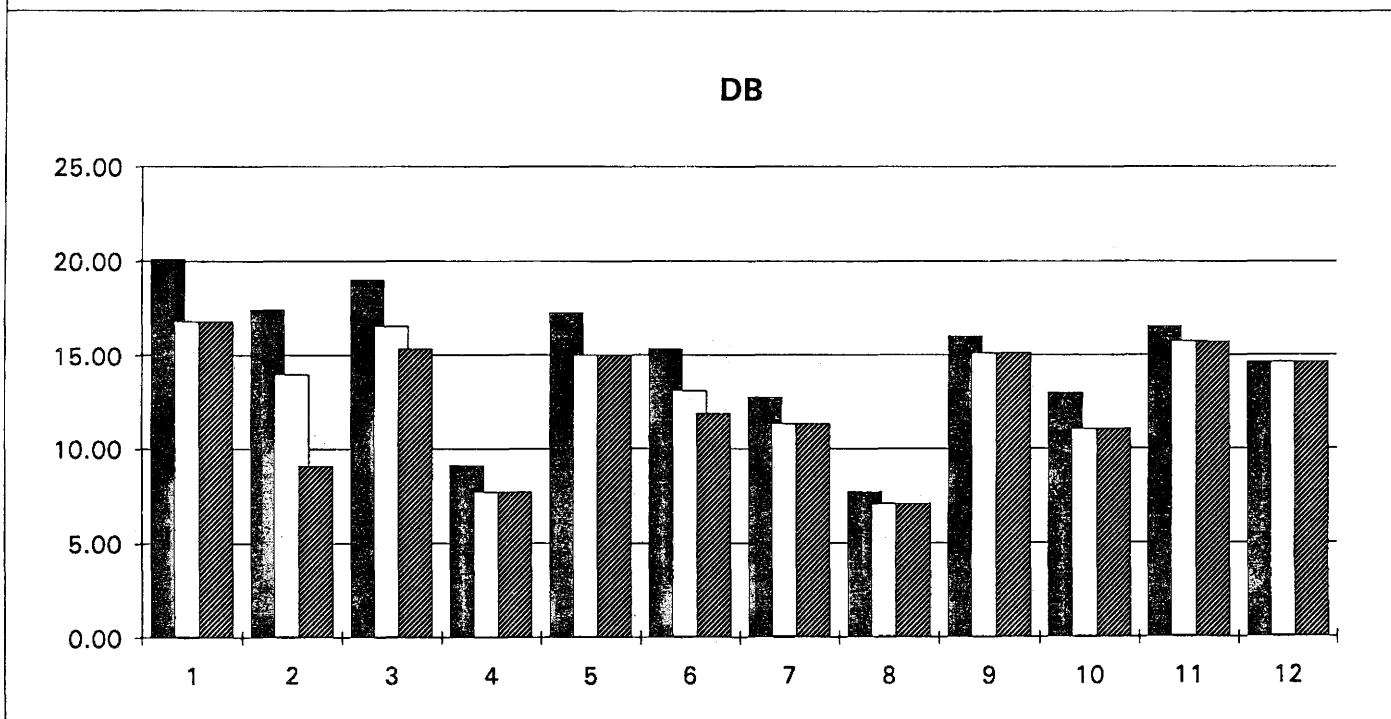
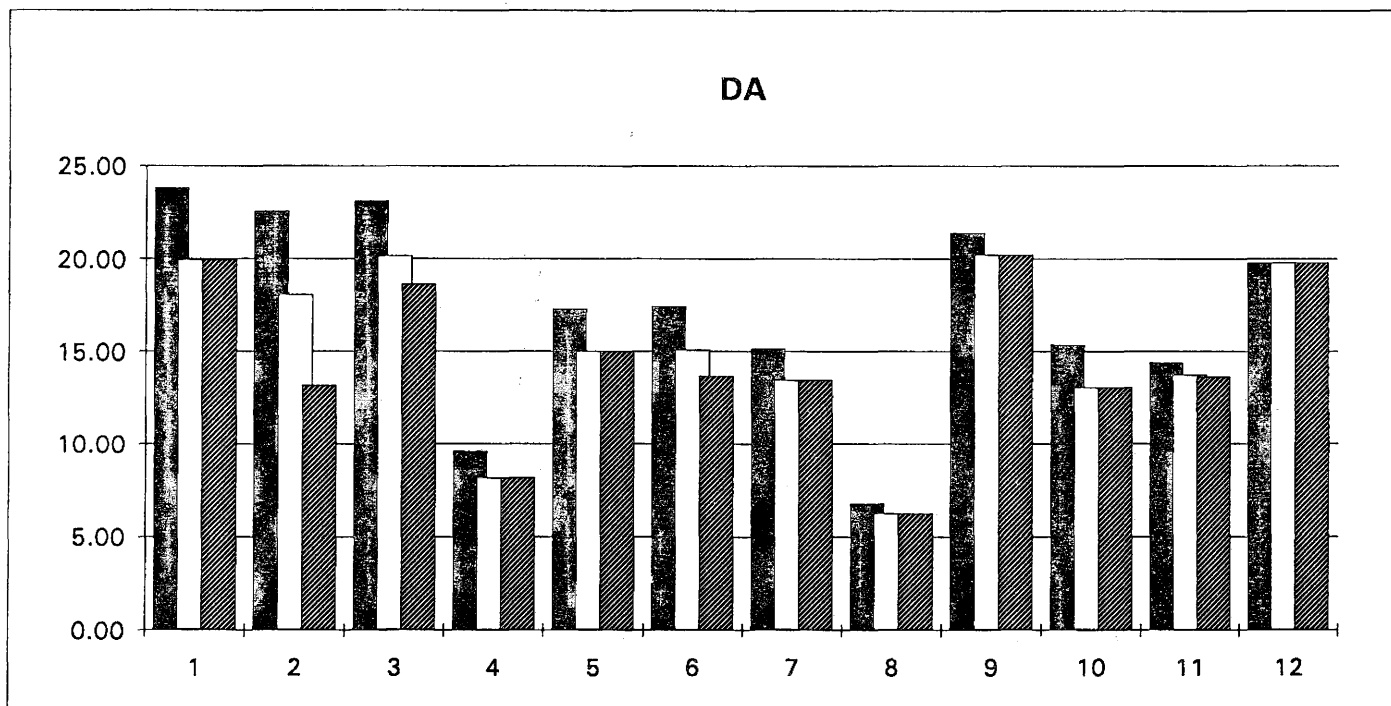
JANUAR 01 JANUARY 1993 JANVIER	NATIONALE WAERHUNG NATIONAL CURRENCY / KWH MONNAIE NATIONALE			KKS	PPS	SPA / 100 KWH	ECUS / 100 KWH			
	STEUERN IMBEGR. WITH TAXES	OHNE MEHRWERT. VAT EXC.	OHNE TAXES EXC. HORS TAXES				STEUERN INBEGR. WITH TAXES	OHNE MEHRWERT. VAT EXC.	OHNE TAXES EXC. HORS TAXES	
VERBRAUCHER-TYPEN	STEUERN	OHNE	OHNE	STEUERN	OHNE	OHNE	STEUERN	OHNE	OHNE	
STANDARD CONSUMERS	IMBEGR.	MEHRWERT.	STEUERN	INBEGR.	MEHRWERT.	STEUERN	INBEGR.	MEHRWERT.	STEUERN	
CONSOMMATEURS TYPE	TAXES	HORS	HORS	TAXES	HORS	HORS	TAXES	HORS	HORS	
	COMPRISES	TVA	TAXES	COMPRISES	TVA	TAXES	COMPRISES	TVA	TAXES	
6. D. LUXEMBOURG (LFR)							NATIONAL			
DA	8.63	8.15	8.15	20.68	19.51	19.51	21.42	20.21	20.21	
DB	6.45	6.09	6.09	15.46	14.58	14.58	16.01	15.11	15.11	
DC	4.31	4.07	4.07	10.33	9.75	9.75	10.70	10.10	10.10	
DD	4.17	3.94	3.94	9.99	9.43	9.43	10.35	9.77	9.77	
DE	2.82	2.66	2.66	6.75	6.37	6.37	6.99	6.60	6.60	
NEDERLANDS (CENTS)							ROTTERDAM			
DA	33.86	28.82	28.82	14.80	12.59	12.59	15.37	13.08	13.08	
DB	28.58	24.32	24.32	12.49	10.63	10.63	12.98	11.04	11.04	
DC	22.96	19.54	19.54	10.03	8.54	8.54	10.42	8.87	8.87	
DD	21.29	18.12	18.12	9.30	7.92	7.92	9.67	8.23	8.23	
DE	15.33	13.05	13.05	6.70	5.70	5.70	6.96	5.92	5.92	
							NOORD-HOLLAND			
DA	31.35	26.68	26.68	13.70	11.66	11.66	14.23	12.11	12.11	
DB	25.77	21.93	21.93	11.26	9.58	9.58	11.70	9.96	9.96	
DC	21.18	18.03	18.03	9.26	7.88	7.88	9.62	8.19	8.19	
DD	19.99	17.01	17.01	8.74	7.43	7.43	9.08	7.72	7.72	
DE	14.63	12.45	12.45	6.39	5.44	5.44	6.64	5.65	5.65	
							NOORD-BRABANT			
DA	32.17	27.38	27.38	14.06	11.97	11.97	14.61	12.43	12.43	
DB	25.24	21.48	21.48	11.03	9.39	9.39	11.46	9.75	9.75	
DC	19.19	16.34	16.34	8.39	7.14	7.14	8.71	7.42	7.42	
DD	17.58	14.96	14.96	7.68	6.54	6.54	7.98	6.79	6.79	
DE	13.41	11.41	11.41	5.86	4.99	4.99	6.09	5.18	5.18	
PORTUGAL (ESC)							LISBOA			
DA	25.431	24.220	24.070	18.41	17.54	17.43	14.42	13.73	13.65	
DB	29.185	27.795	27.720	21.13	20.12	20.07	16.55	15.76	15.72	
DC	25.159	23.961	23.935	18.22	17.35	17.33	14.27	13.59	13.57	
DD	22.326	21.263	21.251	16.16	15.39	15.39	12.66	12.06	12.05	
DE	16.624	15.833	15.829	12.04	11.46	11.46	9.43	8.98	8.98	
UNITED KINGDOM (P)							LONDON			
DA	15.657	15.657	15.657	22.80	22.80	22.80	19.79	19.79	19.79	
DB	11.583	11.583	11.583	16.86	16.86	16.86	14.64	14.64	14.64	
DC	7.734	7.734	7.734	11.26	11.26	11.26	9.78	9.78	9.78	
DD	6.997	6.997	6.997	10.19	10.19	10.19	8.84	8.84	8.84	
DE	4.349	4.349	4.349	6.33	6.33	6.33	5.50	5.50	5.50	
							LEEDS			
DA	13.330	13.330	13.330	19.41	19.41	19.41	16.85	16.85	16.85	
DB	10.460	10.460	10.460	15.23	15.23	15.23	13.22	13.22	13.22	
DC	7.396	7.396	7.396	10.77	10.77	10.77	9.35	9.35	9.35	
DD	6.889	6.889	6.889	10.03	10.03	10.03	8.71	8.71	8.71	
DE	4.302	4.302	4.302	6.26	6.26	6.26	5.44	5.44	5.44	

## PRIX DE L'ELECTRICITE POUR USAGES DOMESTIQUES

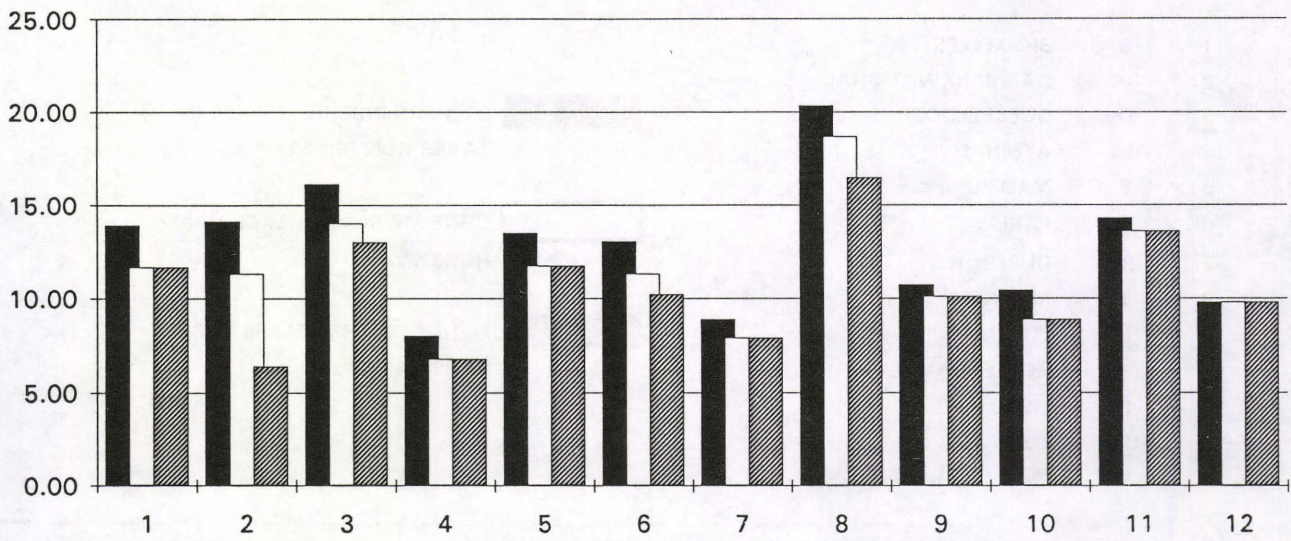
JANUAR 01 JANUARY 1993 JANVIER	NATIONALE WAERUNG NATIONAL CURRENCY / KWH MONNAIE NATIONALE									KKS	PPS	SPA / 100 KWH	ECUS / 100 KWH
	VERBRAUCHER-TYPEN			STEUERN			OHNE						
	STANDARD CONSUMERS	CONSUMMATEURS TYPE		INBEGR.	MEHRWERT.	OHNE	INBEGR.	MEHRWERT.	OHNE				
	WITH TAXES	VAT EXC.	HORS TAXES	WITH TAXES	VAT EXC.	HORS TAXES	WITH TAXES	VAT EXC.	HORS TAXES				
	COMPRISES	TVA	TAXES	COMPRISES	TVA	TAXES	COMPRISES	TVA	TAXES				
UNITED KINGDOM (P)							BIRMINGHAM						
DA	13.467	13.467	13.467	19.61	19.61	19.61	17.02	17.02	17.02				
DB	10.593	10.593	10.593	15.42	15.42	15.42	13.39	13.39	13.39				
DC	7.529	7.529	7.529	10.96	10.96	10.96	9.52	9.52	9.52				
DD	6.985	6.985	6.985	10.17	10.17	10.17	8.83	8.83	8.83				
DE	4.263	4.263	4.263	6.21	6.21	6.21	5.39	5.39	5.39				
							GLASGOW						
DA	13.500	13.500	13.500	19.66	19.66	19.66	17.06	17.06	17.06				
DB	10.220	10.220	10.220	14.88	14.88	14.88	12.92	12.92	12.92				
DC	7.440	7.440	7.440	10.83	10.83	10.83	9.40	9.40	9.40				
DD	6.710	6.710	6.710	9.77	9.77	9.77	8.48	8.48	8.48				
DE	4.260	4.260	4.260	6.20	6.20	6.20	5.38	5.38	5.38				

- 1 B BRUXELLES
- 2 DK DANMARK NATIONAL
- 3 D DUESSELDORF
- 4 GR ATHINAI
- 5 E MADRID
- 6 F PARIS
- 7 IRL DUBLIN
- 8 I MILANO
- 9 L LUXEMBOURG
- 10 NL ROTTERDAM
- 11 P LISBOA
- 12 UK LONDON

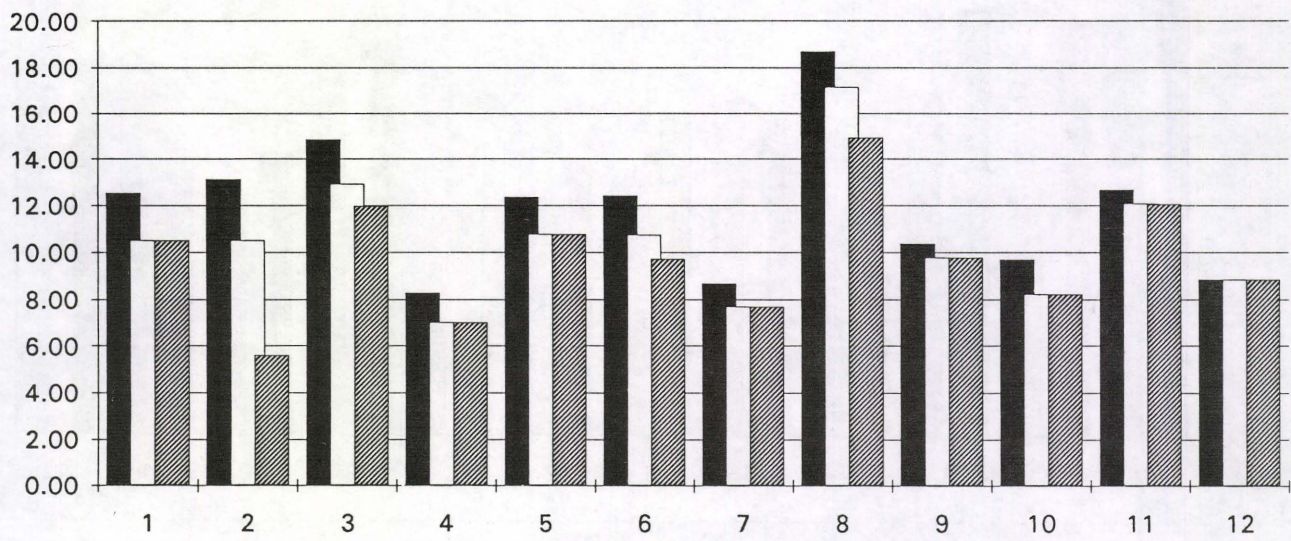
STEUERN INBEGR./ TAXES INCL./ TAXES COMPRISES  
 OHNE MWSt./ VAT EXCL./ HORS TVA  
 OHNE STEUERN/ TAXES EXCL./ HORS TAXES



### DC



### DD



### DE

