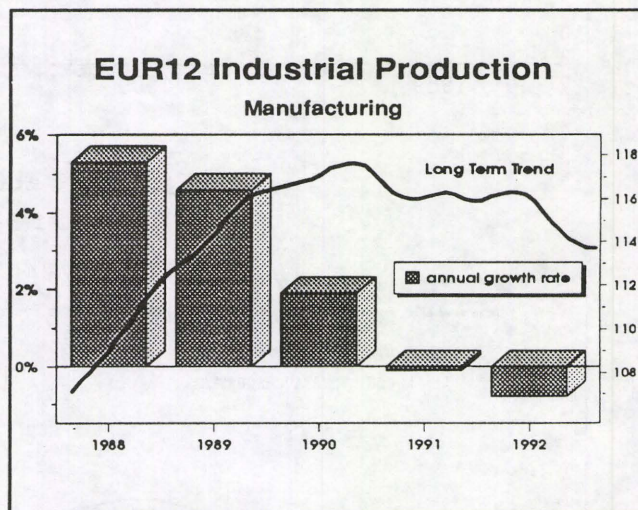


Extract from "Industrial Trends - January 1993"

Recession worsens

The latest (October 1992) figures for industrial production in the European Community (EUR 12) reveal a worsening of the recession. In the capital goods industries in particular, production has continued to fall. The index of industrial production (NACE 1-4), adjusted for the number of working days, stood at 120.0 (1985 = 100) for the Community as a whole in October, 1.6 % down on the previous October's figure. For the capital goods industries, the index fell 4.2 %, giving a seasonally-adjusted production index for the month of 113.0, whereas in January it had stood at 115.0. The seasonally-adjusted EC production index fell by 1.0 % in the past three months (August, September and October) compared with the previous three months (May, June and July).

The seasonally-adjusted figures for industrial output in the EC Member States are as follows (rate of change for the past three months compared with the previous three months, with the capital goods industries in brackets): Italy -3.3 % (-2.1 %), Netherlands -1.6 % (-2.0 %), Belgium -1.2 % (estimated) (+1.3 %), Denmark -0.7 % (-1.8 %), Germany (West) -0.7 % (-1.1 %), Spain -0.3 % (estimated) (+0.9 %), Greece +0.0 % (-5.9 %), France +0.3 % (+0.4 %), United Kingdom +1.2 % (+0.9 %), Ireland +3.8 % (estimated) (+3.4 %). Production is therefore falling in very many Member States.



In the USA, industrial production stagnated at 0.0 % (rate of change for the past three months compared with the previous three months); no current data are available for Japan.

The sharp fall in car manufacturing (NACE 35) in the EC was particularly noticeable, 4.0 % down for the past three months compared with the previous three months.

INDUSTRIELLE PRODUKTION

INDUSTRIAL PRODUCTION

PRODUCTION INDUSTRIELLE

LANGFRISTIGER TREND

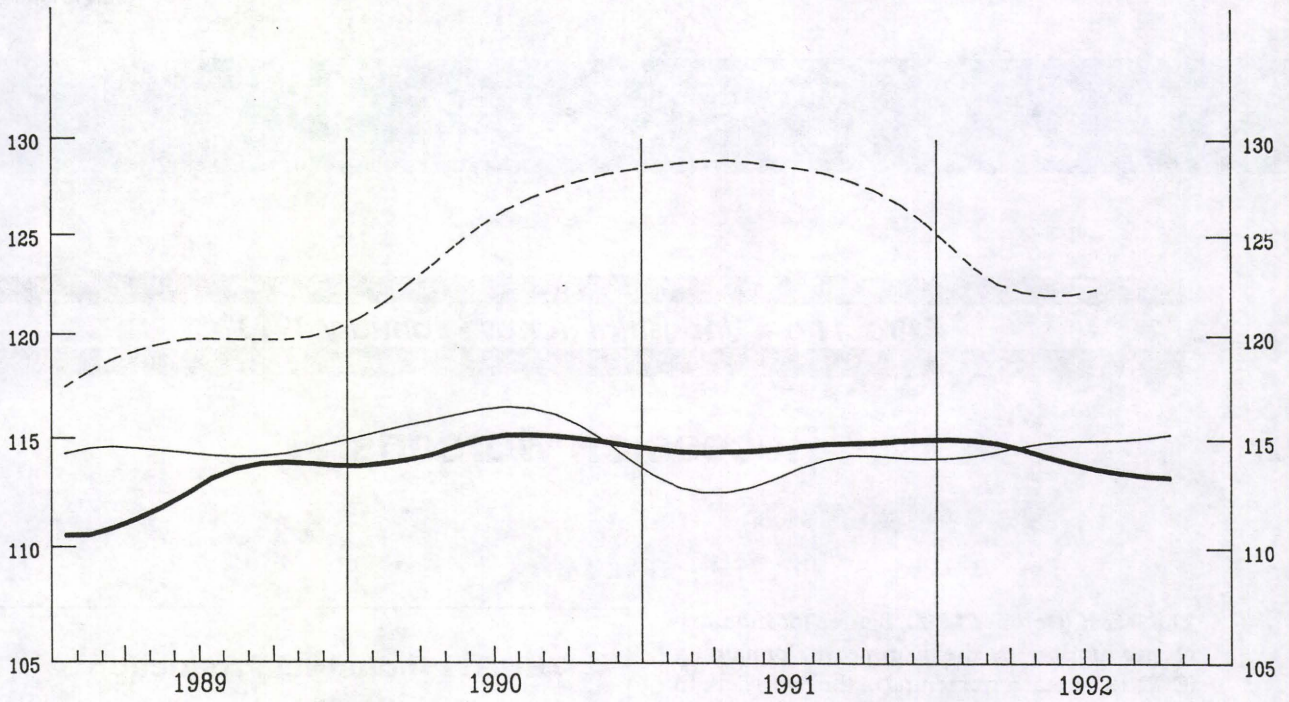
LONG TERM TREND

TENDANCE A LONG TERME

NACE 1-4

1985 = 100

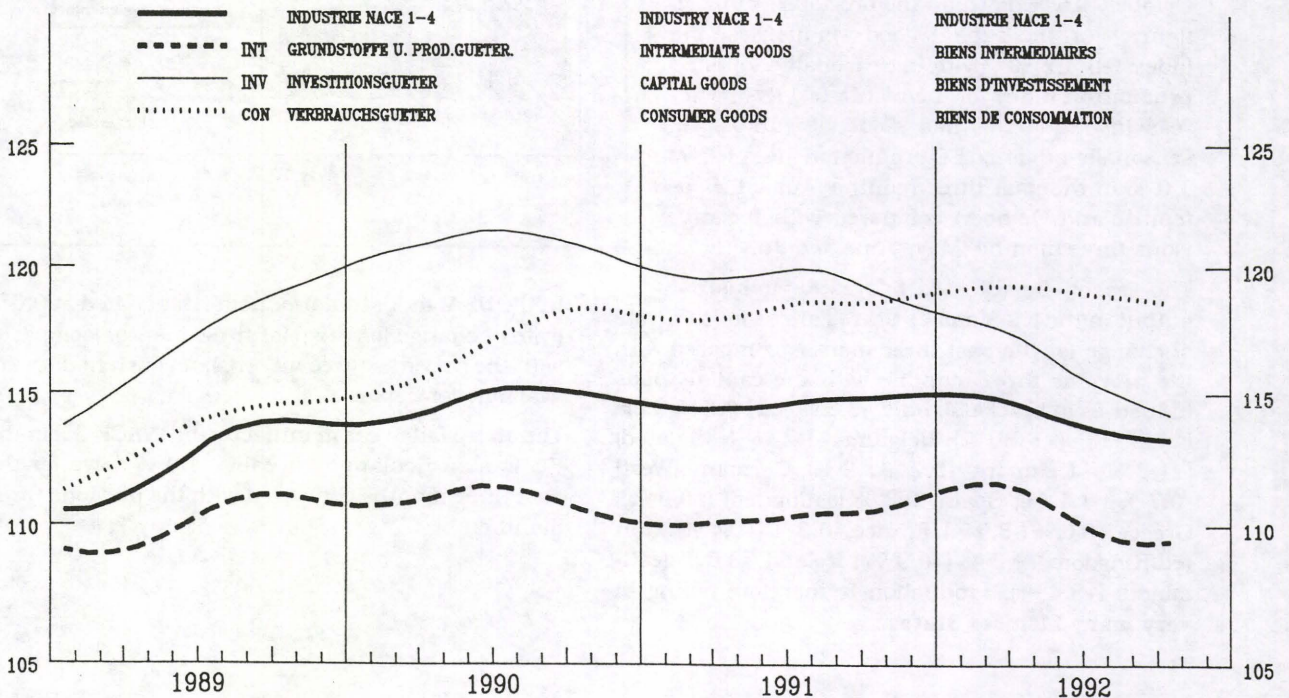
— USA — EUR 12 - - - JAPAN



EUR 12

1985 = 100

—	INDUSTRIE NACE 1-4	INDUSTRY NACE 1-4	INDUSTRIE NACE 1-4
- - -	INT GRUNDSTOFFE U. PROD.GUETER.	INTERMEDIATE GOODS	BIENS INTERMEDIAIRES
—	INV INVESTITIONSGUETER	CAPITAL GOODS	BIENS D'INVESTISSEMENT
.....	CON VERBRAUCHSGUETER	CONSUMER GOODS	BIENS DE CONSOMMATION



BASISINDIKATOREN BASIC INDICATORS INDICATEURS DE BASE

1985 = 100

	Letzte Zahl / Latest figure / Dernier chiffre				Veränderung / Change / Variation	
	Zeitraum Period Période	Pro Arbeitstag Per working day Par jour ouvrable	Saisonbereinigt. Seasonally adjusted Désaisonnalisés	Pro Arbeitstag Per working day Par jour ouvrable %B (1)	Saisonbereinigt Seasonally adjusted Désaisonnalisés %A (2)	
PRODUKTIONSINDIZES						
INDICES OF PRODUCTION						
INDICES DE PRODUCTION						
NACE 1-4						
GESAMTE INDUSTRIE OHNE BAUINDUSTRIE		TOTAL INDUSTRY EXCLUDING CONSTRUCTION		ENSEMBLE DE L'INDUSTRIE SANS BATIMENT		
EUR12	10 92	120.0	113.0	-1.6	-1.0	
B	09 92	119.5	113.7	0.6	-2.2	
DK	10 92	116.9	109.6	0.8	-0.7	
D	10 92	127.4	117.0	-2.3	-0.7	
GR	10 92	103.5	97.5	-4.0	-0.0	
E	09 92	119.1	113.7	-1.4	0.9	
F	10 92	117.2	113.5	-0.5	0.3	
IRL	09 92	171.1	170.0	11.2	4.4	
I	10 92	119.8	113.1	-3.0	-3.3	
L	08 92	89.2	113.9	-5.7	-5.8	
NL	10 92	120.0	115.8	-0.3	-1.6	
P	09 92	131.7	128.9	-5.5	-3.9	
UK	10 92	111.4	107.0	-0.1	1.2	
USA	10 92	117.2	115.5	0.7	-0.0	
J	08 92	111.0	118.2	-5.5	0.2	
GRUNDSTOFFE U. PROD. GUETER						
EUR12		INTERMEDIATE GOODS		BIENS INTERMEDIAIRES		
EUR12	10 92	115.8	109.8	-0.9	-0.6	
B	09 92	118.2	113.8	0.7	-2.0	
DK	10 92	123.2	113.0	2.2	-1.8	
D	10 92	121.6	112.9	-0.9	-0.9	
GR	10 92	100.2	95.4	-6.4	-0.4	
E	09 92	108.9	108.7	-0.9	0.9	
F	10 92	116.4	113.4	:	0.6	
IRL	09 92	167.6	164.3	8.4	3.4	
I	10 92	118.5	111.6	-2.4	-3.2	
L	08 92	84.8	111.0	-8.1	-6.3	
NL	10 92	117.0	115.9	1.4	-0.6	
P	09 92	120.0	121.4	0.7	1.2	
UK	10 92	106.8	103.3	-0.8	2.2	
USA	10 92	121.4	118.1	0.1	-0.2	
J	08 92	113.2	119.4	-4.7	1.6	
INVESTITIONSGUETER						
EUR12		CAPITAL GOODS INDUSTRIES		BIENS D'INVESTISSEMENT		
EUR12	10 92	119.4	113.8	-4.3	-1.7	
B	09 92	118.1	107.6	-9.4	-5.4	
DK	10 92	113.0	108.8	:	-1.8	
D	10 92	125.6	117.3	-5.6	-1.1	
GR	10 92	111.4	110.7	-5.0	-5.9	
E	09 92	135.1	121.4	-1.0	3.2	
F	10 92	101.7	100.6	-4.1	0.4	
IRL	09 92	236.7	235.0	16.2	1.9	
I	10 92	115.0	109.1	-6.7	-2.1	
L	08 92	75.9	104.2	-10.2	-2.4	
NL	10 92	114.7	108.9	-1.6	-2.0	
P	09 92	102.0	101.7	-10.8	-2.1	
UK	10 92	111.8	112.5	-0.5	0.9	
USA	10 92	121.3	119.0	0.7	0.4	
J	08 92	106.3	118.1	-10.8	-1.9	
VERBRAUCHSGUETER						
EUR12		CONSUMER GOODS		BIENS DE CONSOMMATION		
EUR12	10 92	128.9	118.1	-0.8	-1.9	
B	09 92	122.3	115.6	0.4	-1.6	
DK	10 92	115.9	108.6	0.6	0.4	
D	10 92	138.0	122.5	-0.4	-0.1	
GR	10 92	107.8	98.2	-0.5	3.0	
E	09 92	128.8	118.9	-2.1	0.3	
F	10 92	128.0	121.9	0.7	-0.1	
IRL	09 92	149.7	148.2	10.5	6.4	
I	10 92	125.7	117.6	-2.2	-4.1	
L	08 92	125.8	138.7	12.4	-4.2	
NL	10 92	131.0	122.1	-0.5	-2.8	
P	09 92	135.5	122.1	-9.9	-4.2	
UK	10 92	121.7	111.0	1.8	-0.6	
USA	10 92	120.6	118.3	1.3	0.2	
J	08 92	101.4	111.6	-4.1	0.1	
UMSATZ						
TURNOVER						
CHIFFRE D'AFFAIRES						
NACE 1-4						
GESAMTE INDUSTRIE OHNE BAUINDUSTRIE		TOTAL INDUSTRY EXCLUDING CONSTRUCTION		ENSEMBLE DE L'INDUSTRIE SANS BATIMENT		
EUR12	06 92	135.9	130.8	1.2	-0.6	
ABHAENGIS BESCHAEFTEIGTE						
NUMBER OF EMPLOYEES						
NOMBRE DE SALARIÉS						
NACE 1-4						
GESAMTE INDUSTRIE OHNE BAUINDUSTRIE		TOTAL INDUSTRY EXCLUDING CONSTRUCTION		ENSEMBLE DE L'INDUSTRIE SANS BATIMENT		
EUR12	IV 91	96.0	95.9	-3.8	-1.6	

% B(1) - Letzte 3 Monate gegenüber dem entsprechenden Vorjahreszeitraum
- Last 3 months compared with corresponding months of previous year
- Les 3 derniers mois par rapport aux mois correspondants de l'année précédente

% A(2) - Letzte 3 Monate gegenüber den vorhergehenden 3 Monaten
- Last 3 months compared with previous 3 months
- Les 3 derniers mois par rapport aux 3 mois précédents

PRODUKTIONSINDIZES - SAISONBEREINIGT
INDICES OF PRODUCTION - SEASONALLY ADJUSTED
INDICES DE PRODUCTION - DÉSAISONNALISÉS

1985 = 100

	1989	1990	1991	1992						
				04	05	06	07	08	09	

NACE 1-4

GESAMTE INDUSTRIE OHNE BAUINDUSTRIE

TOTAL INDUSTRY EXCLUDING CONSTRUCTION

ENSEMBLE DE L'INDUSTRIE SANS BATIMENT

EUR12	113.0	115.1	115.1	113.9	114.2	113.4	114.1	112.2	113.0	113.0	EUR12
B	112.7	117.7	115.3	115.6	119.1	116.9	113.8	116.4	113.7	:	B
DK	107.2	107.8	110.2	112.5	107.0	114.8	118.4	110.6	117.7	109.6	DK
D	112.1	117.9	121.2	120.4	120.4	119.4	118.7	119.1	119.8	117.0	D
GR	105.3	103.3	101.7	99.3	96.5	100.8	103.3	102.1	101.0	97.5	GR
E	116.1	116.2	115.0	112.9	110.6	113.1	114.7	111.2	113.7	:	E
F	112.0	114.1	114.3	113.8	112.6	112.6	112.6	112.8	112.5	113.5	F
IRL	137.4	143.8	148.7	165.0	159.1	152.6	163.2	164.7	170.0	:	IRL
I	118.6	117.8	115.4	113.5	118.2	114.4	114.7	112.2	110.4	113.1	I
L	118.6	118.0	118.6	115.3	122.5	113.2	113.4	113.9	:	:	L
NL	107.8	110.1	113.2	115.0	113.8	114.2	115.4	110.2	112.0	115.8	NL
P	124.1	135.3	135.1	133.9	135.1	134.0	133.9	124.7	128.9	:	P
UK	109.9	109.3	106.1	105.6	104.5	104.5	105.6	105.5	105.9	107.0	UK
USA	114.5	115.7	113.4	114.5	115.4	114.9	115.9	115.5	115.1	115.5	USA
J	119.7	125.3	128.2	121.5	119.4	122.0	122.9	118.2	:	:	J

GRUNDSTOFFE U. PROD. GUETER

INTERMEDIATE GOODS

BIENS INTERMEDIAIRES

EUR12	110.8	111.3	111.1	110.6	110.7	109.4	110.5	109.3	109.4	109.8	EUR12
-------	-------	-------	-------	-------	-------	-------	-------	-------	-------	-------	-------

INVESTITIONSGUETER

CAPITAL GOODS INDUSTRIES

BIENS D'INVESTISSEMENT

EUR12	117.8	121.6	119.9	117.1	117.0	116.8	114.9	112.6	116.3	113.8	EUR12
-------	-------	-------	-------	-------	-------	-------	-------	-------	-------	-------	-------

VERBRAUCHSGUETER

CONSUMER GOODS

BIENS DE CONSOMMATION

EUR12	113.1	116.5	117.9	117.9	119.1	119.1	120.4	115.3	118.5	118.1	EUR12
-------	-------	-------	-------	-------	-------	-------	-------	-------	-------	-------	-------

Type 02

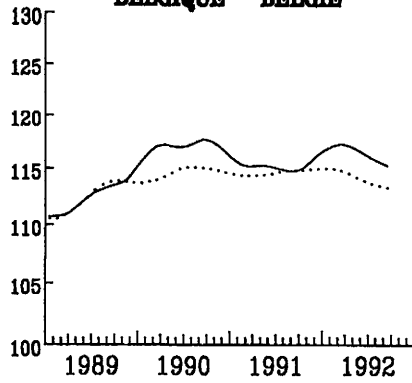
INDUSTRIELLE PRODUKTION
LANGFRISTIGER TREND

INDUSTRIAL PRODUCTION
LONG TERM TREND

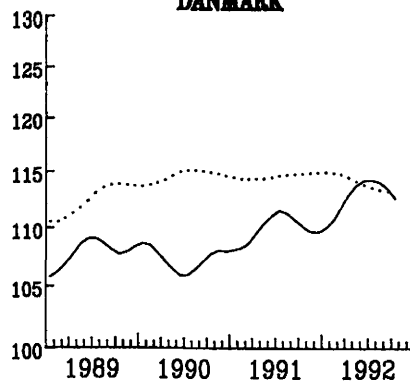
PRODUCTION INDUSTRIELLE
TENDANCE A LONG TERME

NACE 1-4 1985=100

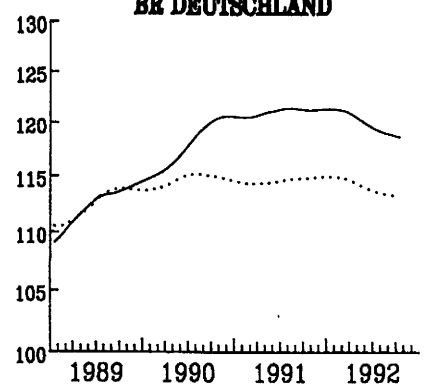
BELGIQUE - BELGIE



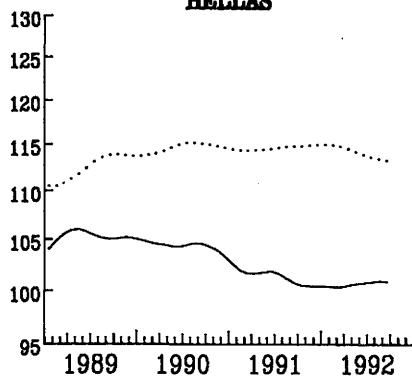
DANMARK



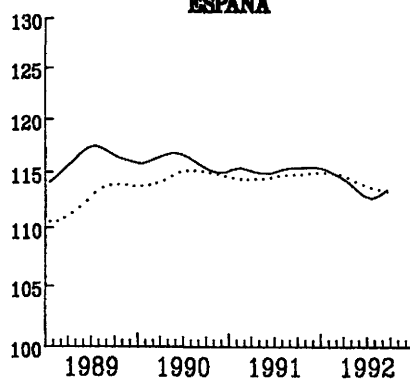
BR DEUTSCHLAND



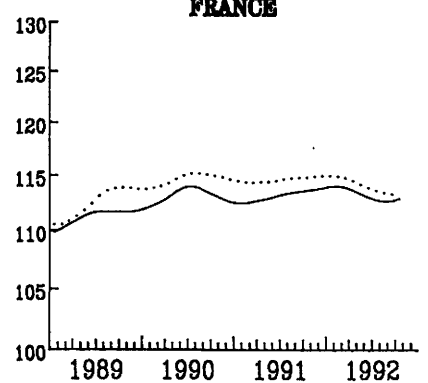
HELLAS



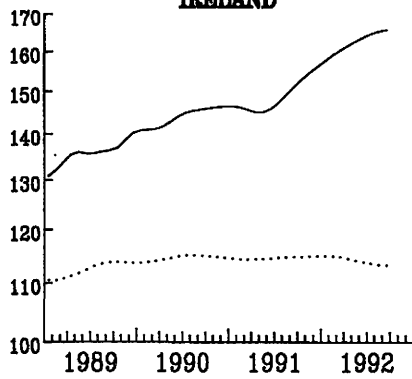
ESPAÑA



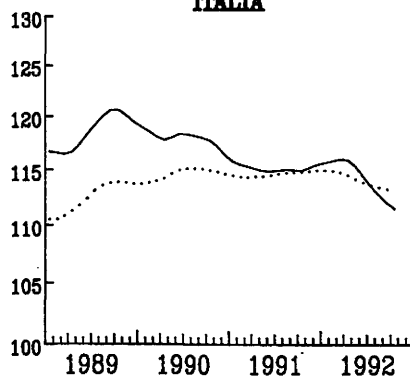
FRANCE



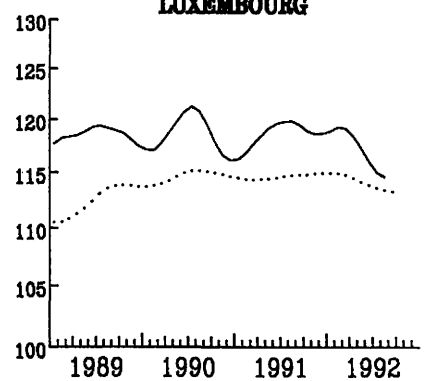
IRELAND



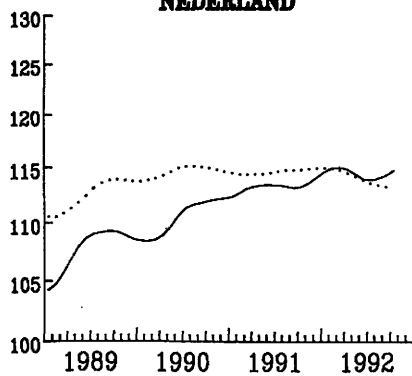
ITALIA



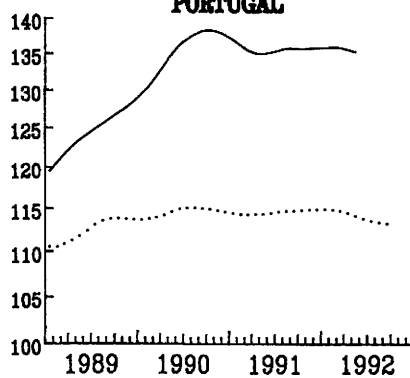
LUXEMBOURG



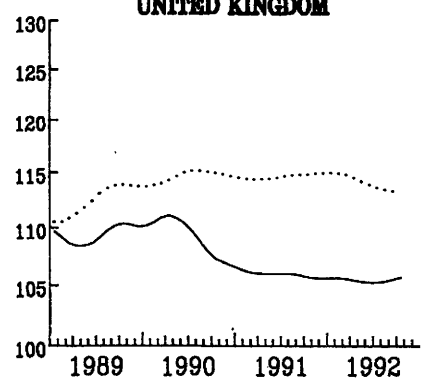
NEDERLAND



PORTUGAL



UNITED KINGDOM



..... EUR 12

SKALAZI LOGARITMIČNE ENOČRNE

SEMI-LOGARITHMIC SCALE

ÉCHELLE SEMI-LOGARITHMIQUE

PRODUKTIONSINDIZES - PRO ARBEITSTAG
INDICES OF PRODUCTION - PER WORKING DAY
INDICES DE PRODUCTION - PAR JOUR OUVRABLE

1985 = 100

	1989	1990	1991	1991			1992			
				08	09	10	08	09	10	

NACE 1-4

GESAMTE INDUSTRIE OHNE BAUINDUSTRIE

TOTAL INDUSTRY EXCLUDING CONSTRUCTION

ENSEMBLE DE L'INDUSTRIE SANS BATIMENT

EUR12	113.0	115.1	115.1	85.6	118.1	121.9	83.9	116.4	120.0	EUR12
B	112.7	117.7	115.3	101.5	121.1	117.5	105.3	119.5	:	B
DK	107.2	107.8	110.2	115.9	118.9	120.9	115.9	125.9	116.9	DK
D	112.1	117.9	121.2	107.9	124.9	132.4	105.9	123.6	127.4	D
GR	105.3	103.3	101.7	93.7	118.0	107.8	94.2	108.8	103.5	GR
E	116.1	116.2	115.0	68.6	119.7	130.3	65.1	119.1	:	E
F	112.0	114.1	114.3	82.1	112.5	117.2	81.0	112.1	117.2	F
IRL	137.4	143.8	148.7	127.7	154.5	156.1	139.6	171.1	:	IRL
I	118.6	117.8	115.4	51.9	124.1	120.7	50.0	118.0	119.8	I
L	118.6	118.0	118.6	94.2	120.1	117.3	89.2	:	:	L
NL	107.8	110.1	113.2	96.0	108.0	117.0	92.0	108.0	120.0	NL
P	124.1	135.3	135.1	97.7	139.6	139.7	86.5	131.7	:	P
UK	109.9	109.3	106.1	94.8	107.5	110.4	94.4	106.7	111.4	UK
USA	114.5	115.7	113.4	116.9	118.0	116.3	118.2	118.2	117.2	USA
J	119.7	125.3	128.2	119.7	130.6	130.2	111.0	:	:	J

GRUNDSTOFFE U. PROD. GUETER

INTERMEDIATE GOODS

BIENS INTERMEDIAIRES

EUR12	110.8	111.3	111.1	81.8	111.7	117.0	81.3	110.4	115.8	EUR12
-------	-------	-------	-------	------	-------	-------	------	-------	-------	-------

INVESTITIONSGUETER

CAPITAL GOODS INDUSTRIES

BIENS D'INVESTISSEMENT

EUR12	117.8	121.6	119.9	89.7	123.5	124.7	83.0	120.9	119.4	EUR12
-------	-------	-------	-------	------	-------	-------	------	-------	-------	-------

VERBRAUCHSGUETER

CONSUMER GOODS

BIENS DE CONSOMMATION

EUR12	113.1	116.5	117.9	89.4	126.0	129.4	87.1	126.1	128.9	EUR12
-------	-------	-------	-------	------	-------	-------	------	-------	-------	-------

Type 03

INDUSTRIELLE PRODUKTION

Veränderung gegenüber dem
Vorjahresquartal

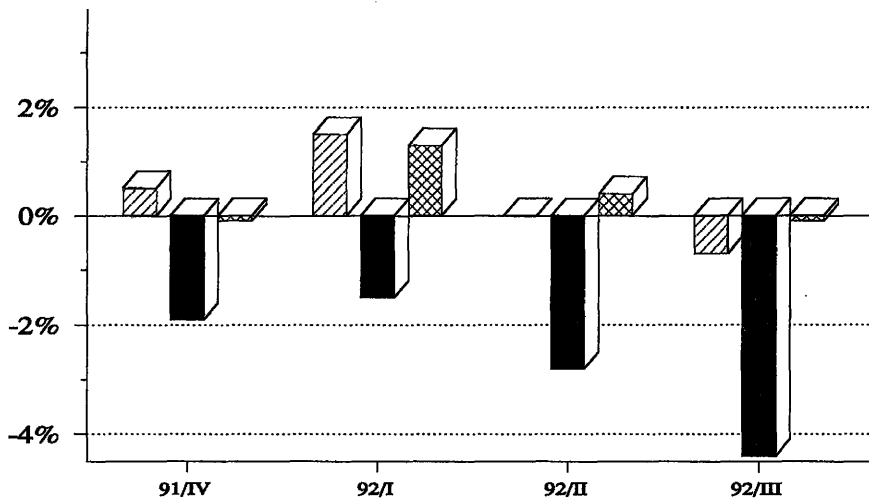
INDUSTRIAL PRODUCTION

Change from the corresponding quarter
of the previous year

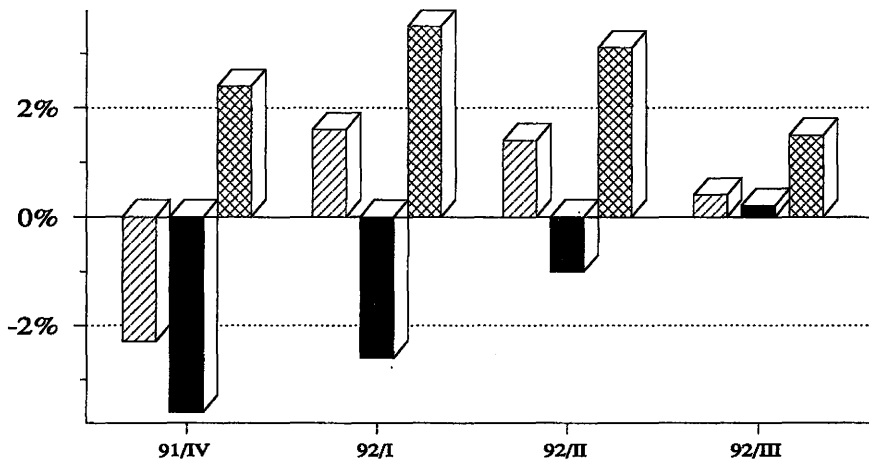
PRODUCTION INDUSTRIELLE

Variation par rapport au trimestre
de l'année précédente

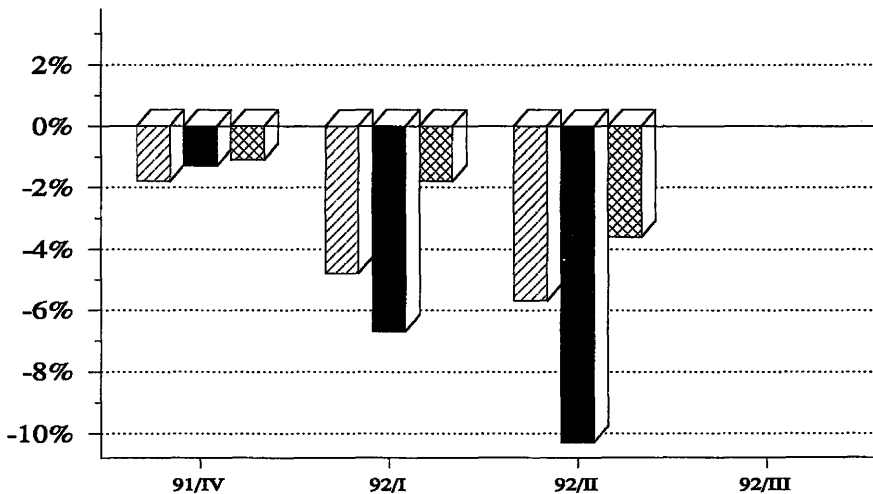
EUR 12



USA



JAPAN



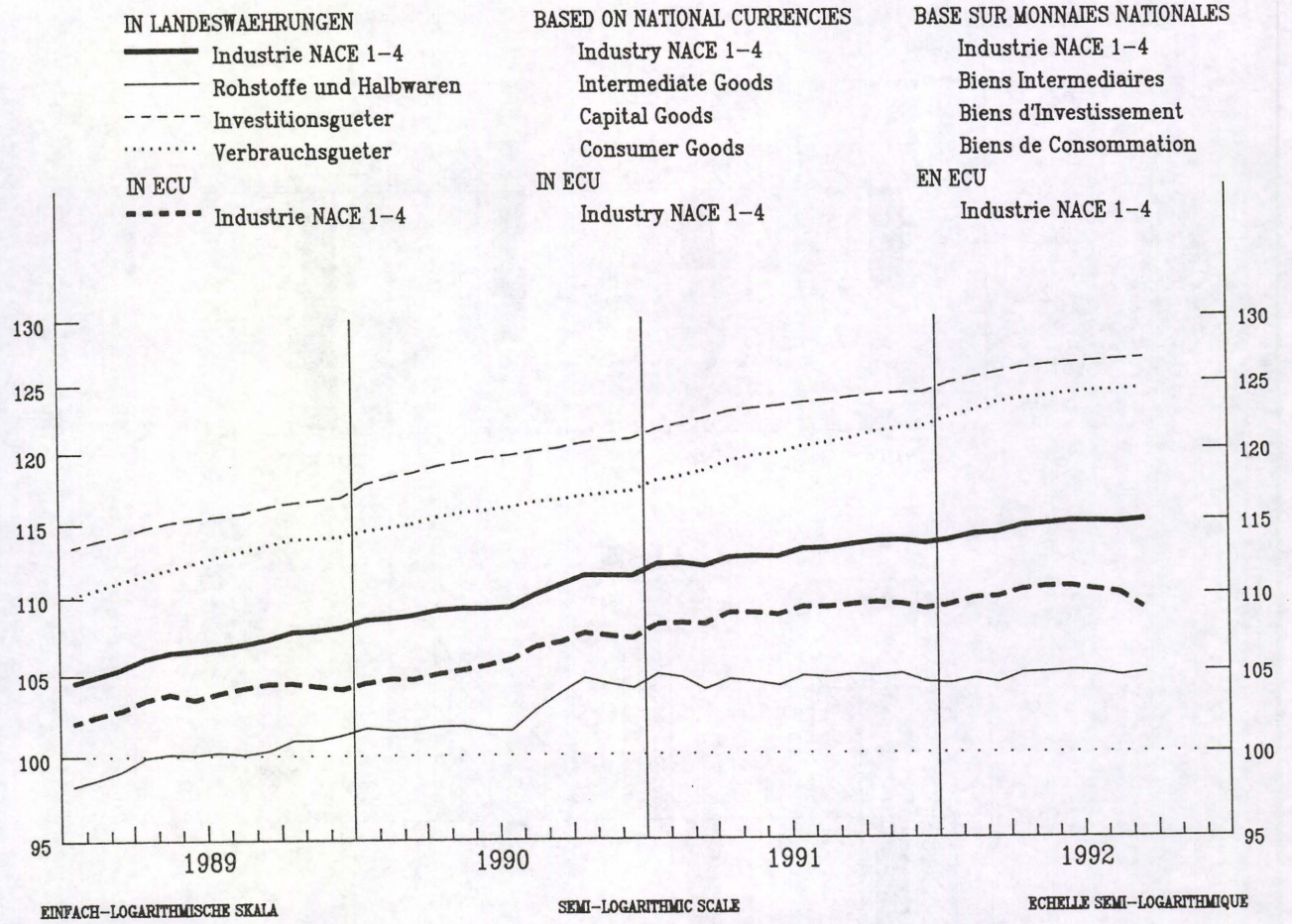
	Grundstoffe und Produktionsgüter	Intermediate goods	Biens intermédiaires
	Investitionsgüter	Capital goods	Biens d'investissement
	Verbrauchsgüter	Consumption goods	Biens de consommation

ERZEUGERPREISINDEX

PRODUCER PRICE INDEX

INDICE DES PRIX A LA PRODUCTION

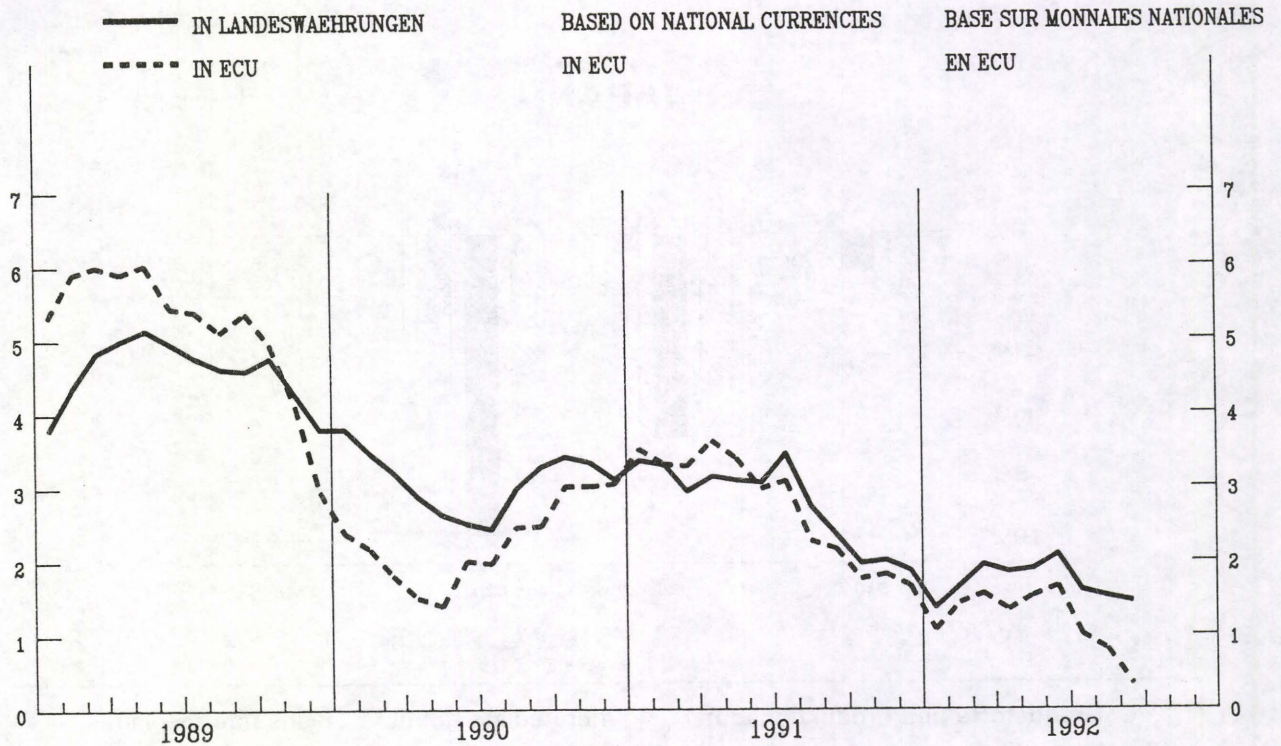
EUR 12 - 1985 = 100



VERAENDERUNG % T/T-12

VARIATION % T/T-12

VARIATION % T/T-12



GESAMTE INDUSTRIE OHNE BAUINDUSTRIE
TOTAL INDUSTRY EXCLUDING CONSTRUCTION
ENSEMBLE DE L'INDUSTRIE SANS BATIMENT
NACE 1-4
PREISINDIZES - PRICE INDICES - INDICES DE PRIX

1985 = 100

	1990	1991	1992							Letzte Zahl Latest figure Dernier chiffre		
			04	05	06	07	08	09	10	%	%	

IN LANDESWAHRUNG

IN NATIONAL CURRENCY

EXPRIMES EN MONNAIE NATIONALE

EUR12	109.8	112.9	114.6	114.7	114.9	114.9	114.8	115.0	:	1.5	0.2	EUR12
B	93.6	92.6	93.1	93.5	93.7	93.3	92.3	92.8	92.9	-0.5	0.1	B
DK	108.8	110.0	109.0	110.0	110.0	108.0	108.0	108.0	108.0	-2.7	0.0	DK
D	101.0	103.4	104.9	105.1	105.2	105.1	105.1	105.1	104.9	0.5	-0.2	D
GR	189.0	221.5	240.7	242.0	243.1	244.0	252.0	257.3	261.3	12.5	1.6	GR
E	111.5	113.2	114.6	114.7	115.0	114.9	114.8	114.7	:	1.2	-0.0	E
F (1)	107.5	108.5	109.1	109.3	109.4	109.4	109.3	109.2	:	0.6	-0.1	F (1)
IRL	113.0	114.3	116.5	116.6	116.6	117.1	116.9	116.9	117.2	2.0	0.0	IRL
I	117.8	121.7	123.7	123.7	123.9	123.9	123.9	124.2	124.6	2.0	0.4	I
L	98.8	96.2	94.9	94.5	94.9	93.9	93.9	93.4	:	-3.0	-0.6	L
NL	87.3	89.7	90.1	90.1	90.2	90.4	90.3	90.1	90.0	0.0	-0.1	NL
P	:	:	:	:	:	:	:	:	:	:	:	P
UK	117.6	122.9	126.0	125.9	126.1	126.3	126.0	126.6	126.9	3.2	0.6	UK

IN ECU

IN ECU

EXPRIMES EN ECU

EUR12	106.0	108.8	110.3	110.5	110.5	110.2	110.0	109.0	:	-0.3	-1.0	EUR12
B	99.1	98.4	99.2	99.3	99.7	99.6	98.9	100.9	103.2	3.7	2.3	B
DK	111.1	111.5	110.1	111.1	111.7	110.1	110.3	111.5	114.3	1.6	2.5	DK
D	109.6	112.3	114.1	113.9	114.2	114.6	115.0	116.7	118.9	4.8	1.9	D
GR	98.2	103.0	105.3	104.2	102.4	102.0	105.0	106.9	107.4	0.8	0.5	GR
E	111.2	113.7	114.6	115.1	114.9	114.0	113.3	109.7	:	-3.5	-3.2	E
F (1)	105.7	105.7	107.1	107.5	107.7	107.8	107.6	108.8	:	2.9	1.1	F (1)
IRL	105.3	106.4	108.5	108.4	108.6	109.3	109.0	110.0	112.2	4.7	0.3	IRL
I	112.0	114.8	116.0	115.6	115.6	115.8	116.0	111.1	104.1	-9.8	-6.3	I
L	104.6	102.4	101.2	100.3	100.9	100.3	100.7	101.5	:	-0.9	0.8	L
NL	94.9	97.4	98.2	97.8	98.0	98.6	98.9	100.2	102.3	4.4	2.1	NL
P	:	:	:	:	:	:	:	:	:	:	:	P
UK	97.1	103.2	104.9	105.9	105.6	104.2	102.6	99.7	93.4	-9.9	-0.7	UK

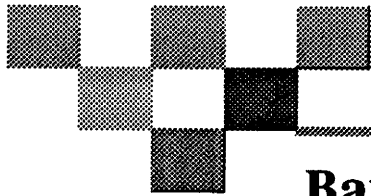
(1) Schätzung - Estimation Eurostat

GESAMTE INDUSTRIE OHNE BAUINDUSTRIE
TOTAL INDUSTRY EXCLUDING CONSTRUCTION
ENSEMBLE DE L'INDUSTRIE SANS BATIMENT

NACE 1-4

1985 = 100

	EUR12	B	DK	D(WEST)	GR	E	F	IRL	I	L	NL	P	UK
PRODUKTIONSINDIZES													
INDICES OF PRODUCTION													
INDICES DE PRODUCTION													
1986	102.4	100.8	106.5	102.4	99.8	103.1	100.9	102.2	104.1	102.1	100.2	107.3	102.4
1987	104.4	103.0	102.8	102.7	98.1	107.9	102.8	111.2	106.8	101.2	101.1	112.0	105.7
1988	109.0	108.9	104.8	106.5	103.7	111.1	107.6	123.1	114.2	110.0	103.6	116.2	109.5
1989	113.0	112.7	107.2	112.1	105.3	116.1	112.0	137.4	118.6	118.6	107.8	124.1	109.9
1990	115.1	117.7	107.8	117.9	103.3	116.2	114.1	143.8	117.8	118.0	110.1	135.3	109.3
1991	115.1	115.3	110.2	121.2	101.7	115.0	114.3	148.7	115.4	118.6	113.2	135.1	106.1
UMSATZ													
TURNOVER													
CHIFFRE D'AFFAIRES													
Saisonbereinigt													
Seasonally adjusted													
Désaisonnalisés													
1991 09	129.0	123.3	121.3	130.6			125.9	145.4	142.3	111.6	100.8		130.0
10	131.8	128.7	131.4	130.1			130.0	144.7	148.2	114.3	101.5		128.8
11	129.7	121.1	119.1	131.0			126.2	147.1	142.3	108.5	101.7		130.4
12	128.8	120.5	124.8	130.7			127.8	144.1	144.6	107.7	102.0		129.2
1992 01	129.5	122.8	121.6	129.4			128.3	150.4	140.9	112.8	102.5		127.1
02	131.0	122.6	124.2	131.1			128.2	153.4	143.9	113.0	102.9		129.7
03	131.6	124.1	124.6	133.3			127.1	151.8	144.2	113.6	103.3		132.9
04	131.3	130.4	122.3	131.6			128.2	154.6	149.5	113.7	100.3		128.3
05	127.8		121.1	130.7			124.4	157.9	137.0	112.7	100.5		129.1
06	130.8		128.2	132.2			126.6	153.1	144.6	110.0	100.7		132.2
07			126.4	129.6				151.6	149.3	111.0			132.7
08			121.9	130.0				151.6	135.3	107.9			130.8
09			129.4	132.7				154.2	146.7				130.8
10			116.5	128.0									127.6
AUSFUHR													
EXPORTS													
EXPORTATIONS													
Mengen, Saisonbereinigt													
Volumes, seasonally adjusted													
En volume, désaisonnalisés													
1991 09	99.1		130.5	112.9	130.7	134.5	139.7	153.0	101.4		121.5	166.4	115.2
10	105.8		133.2	114.8	134.6	155.6	148.1	158.9	106.9		130.6	194.7	122.9
11	102.5		131.3	117.7	136.9	139.1	136.3	161.5	100.6		126.2	174.3	115.7
12	101.2		128.4	114.1	113.7	138.6	132.2	148.0	108.7		122.9	174.8	123.6
1992 01	98.4		146.9	110.8	148.9	125.4	135.1	164.8	109.3		132.3	200.4	114.9
02	98.4		148.2	113.1	191.0	147.8	134.7	172.9	106.5		130.4	193.3	116.4
03	98.6		153.0	115.1	159.1	137.8	137.7	153.3	107.8		122.5	169.3	115.4
04	101.1		140.9	118.8	143.1	133.7	139.0	158.4	105.1		131.1	192.7	116.2
05	92.4		140.9	102.9	158.6	134.8	129.2	173.8	101.5		114.0	173.4	116.0
06	93.1		153.8	100.0	117.2	139.9	134.3	163.2	100.7		119.5	123.0	115.7
07	99.8		146.6	112.5	197.3	136.9	133.9	177.4	104.3		126.4	196.1	120.6
08	91.1		143.3	103.1	134.5	124.8	124.4	199.0	100.9		107.1	248.0	108.9
EINFUHR													
IMPORTS													
IMPORTATIONS													
Mengen, Saisonbereinigt													
Volumes, seasonally adjusted													
En volume, désaisonnalisés													
1991 09	160.7		118.7	169.3	124.4	246.9	156.3	141.8	132.7		133.8	262.7	119.2
10	162.0		121.4	169.7	129.0	267.4	157.0	146.6	136.3		136.6	297.9	119.8
11	160.1		114.8	168.1	199.7	260.5	149.9	145.0	128.7		129.2	256.9	117.8
12	157.3		114.1	161.6	143.6	246.9	155.7	138.6	128.7		133.6	283.1	121.4
1992 01	159.3		129.2	170.4	135.7	250.2	148.1	133.4	132.5		139.1	260.3	116.3
02	159.4		128.8	168.7	145.1	256.8	152.4	134.4	136.8		135.0	285.2	123.4
03	161.3		139.3	169.8	115.4	264.6	155.7	129.2	135.6		131.4	310.2	120.7
04	159.2		135.0	174.0	159.8	249.4	151.1	131.4	132.1		133.6	310.2	124.8
05	147.9		121.0	155.8	140.8	256.1	139.6	120.7	129.3		120.6	284.0	119.8
06	150.7		128.2	149.6	142.5	252.6	155.1	132.8	133.2		128.3	227.1	120.4
07	156.6		126.7	170.4	162.1	265.6	149.4	134.4	129.9		133.9	280.7	124.2
08	141.4		116.4	146.6	123.5	235.5	143.0	138.5	116.1		118.3	343.8	117.7
ERZEUGERPREISINDIZES													
PRODUCER PRICE INDICES													
INDICE DE PRIX A LA PRODUCTION													
1991 09	113.4	93.3	111.0	104.3	229.3	113.4	108.6	114.5	121.9	96.3	90.3		123.2
10	113.6	93.4	111.0	104.4	232.2	113.6	108.7	114.8	122.2	95.9	90.0		123.7
11	113.6	93.2	111.0	104.3	231.8	113.8	108.7	114.9	122.4	95.5	90.0		123.7
12	113.4	92.1	111.0	104.1	230.8	113.6	108.8	115.1	122.2	94.7	89.8		123.5
1992 01	113.7	92.1	109.0	104.0	234.4	114.0	108.9	115.1	122.9	94.0	89.9		124.0
02	114.1	92.4	109.0	104.3	235.2	114.3	108.9	115.7	123.3	94.2	90.0		124.9
03	114.2	92.6	109.0	104.6	239.0	114.2	109.0	116.4	123.3	94.2	90.1		124.7
04	114.6	93.1	109.0	104.9	240.7	114.6	109.1	116.5	123.7	94.9	90.1		126.0
05	114.7	93.5	110.0	105.1	242.0	114.7	109.3	116.6	123.7	94.5	90.1		125.9
06	114.9	93.7	110.0	105.2	243.1	115.0	109.4	116.6	123.9	94.9	90.2		126.1
07	114.9	93.3	108.0	105.1	244.0	114.9	109.4	117.1	123.9	93.9	90.4		126.3
08	114.8	92.3	108.0	105.1	252.0	114.8	109.3	116.9	123.9	93.9	90.3		126.0
09	115.0	92.8	108.0	105.1	257.3	114.7	109.2	116.9	124.2	93.4	90.1		126.6
10		92.9	108.0	104.9	261.3			117.2	124.6		90.0		126.9
11								117.2					127.7
ABHAENGIG BESCHAEFTIGTE													
NUMBER OF EMPLOYEES													
NOMBRE DE SALARIES													
Saisonbereinigt													
Seasonally adjusted													
Désaisonnalisés													
1990 I	100.3	96.9	99.3	105.7	103.5	115.4	95.4	99.3	87.4	96.2	104.8	96.2	101.1
II	100.3	96.5	99.5	106.3	102.4	115.0	95.5	99.8	87.0	95.9	105.1	95.5	100.9
III	100.1	96.5	99.5	107.0	99.1	115.1	95.4	100.3	86.7	95.2	105.7	94.9	99.5
IV	99.9	96.7	99.1	107.8	96.6	114.4	95.2	100.8	86.1	94.8	106.1	95.4	98.6
1991 I	99.3	96.5	98.0	108.4	99.3	112.5	94.6	100.6	85.5	94.6	106.1	93.5	96.9
II	98.5	95.8	97.4	108.4	94.7	111.3	93.9	100.4	84.7	94.1	106.0	91.7	95.1
III	97.5	95.4	96.8	108.2	92.3	111.1	93.7	100.2	84.0	94.6	105.6	90.6	92.3
IV	95.9	95.1	96.0	107.8	89.7	110.8	93.1	100.8	83.2	95.3	105.4	89.5	86.5
1992 I		93.5	95.5	107.1		110.4		100.6	81.8	95.4	105.8	86.3	
II			95.4	106.2		109.8			80.5	95.4	105.5	84.2	
III			95.4	105.0									



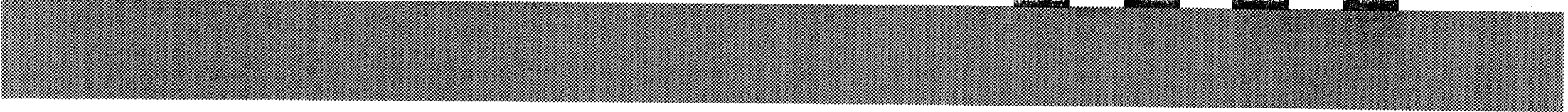
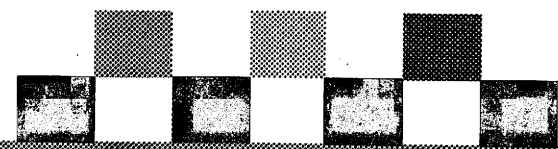
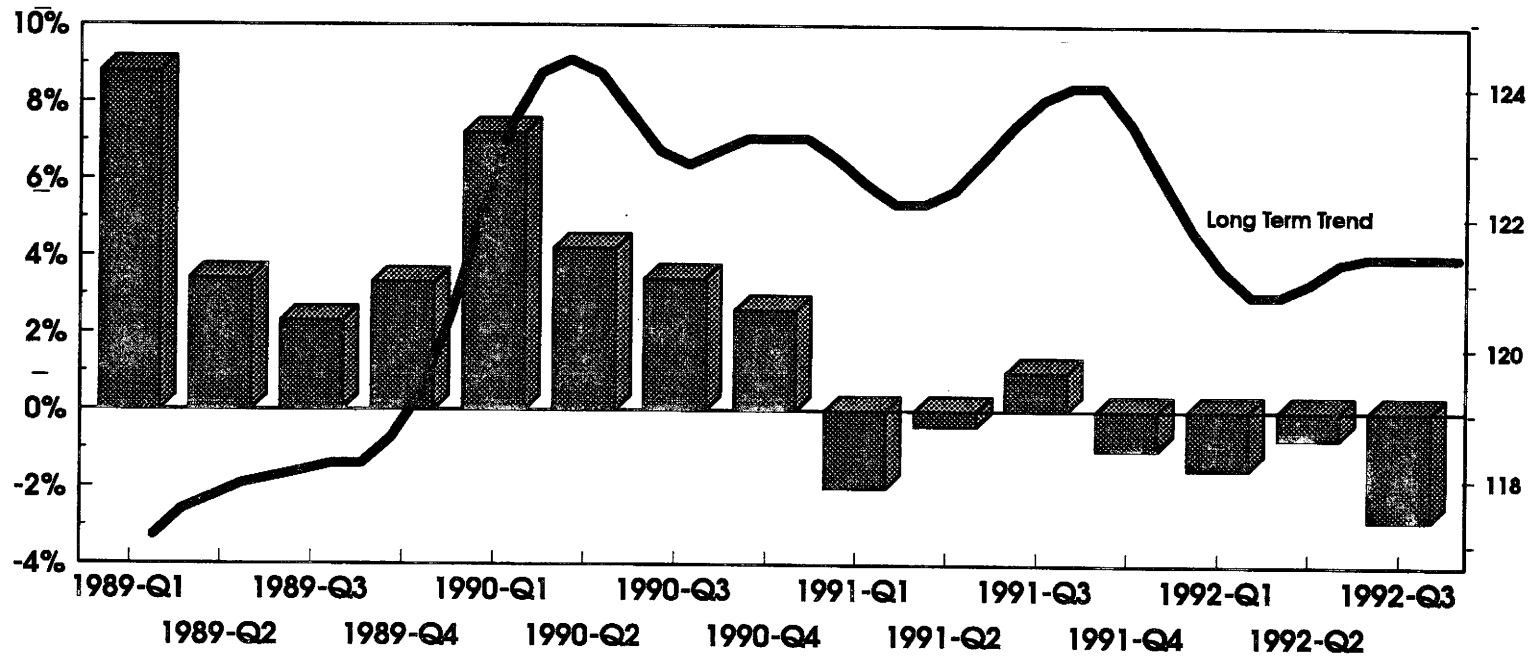
EUR12 (Schätzung - estimation)

Baugewerbe

Construction

Batiment et genie civil

Wachstumsraten - growth rates - taux de croissance



PRODUKTIONSINDIZES - BE- UND VERARBEITENDES GEWERBE PRODUCTION INDICES - MANUFACTURING INDUSTRIES INDICES DE PRODUCTION - INDUSTRIES MANUFACTURIERES

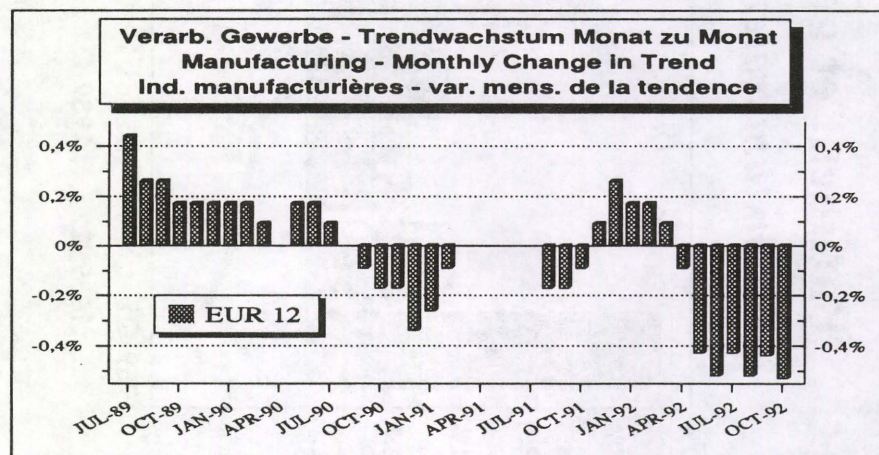
Veränderungsraten von Monat zu Monat (in Prozent)
Month to month change (in percent)
Variation (en pourcent) de mois en mois

Saisonbereinigte Werte - seasonally adjusted values - valeurs corrigées de var. saisonnières

	01/92	02/92	03/92	04/92	05/92	06/92	07/92	08/92	09/92	10/92	
EUR12	1.4	1.6	-0.5	-1.1	0.5	-1.2	0	-1.7	0.8	-0.7	EUR12
B	-1.4	2	-2	0.2	2.5	-2.3	-3.1	1.4	-0.8		B
DK	0	2	3.3	-1.6	-7.8	12.1	2	-7.4	7.7	-9.1	DK
D	3.5	1.6	-1.4	-1	0.8	-2.1	0.2	-1.1	2.4	-3.3	D
GR	3	-2.9	-0.5	0.9	-1.5	2.1	1.1	1.1	-5	-1.1	GR
E	-2.9	4.4	0.1	-5	-1.1	1.7	1.1	-3.8	3.5		E
F	0.3	0.5	-0.3	0	-0.4	-0.2	-1.6	0	0.5	-0.6	F
IRL	6.7	0.9	0	3.7	-1.5	-7.4	10.4	-1.3	2.6		IRL
I	5.7	0.5	0	-2.3	3.9	-4.2	0.5	-6.6	3.4	2	I
L	-2.1	6.6	0.7	-5.1	10.1	-11.1	0.7	-1.1			L
NL	1.4	2.2	-2.4	2.2	-1.3	0	1.2	-4	1.2	0.9	NL
P	5.6	0.9	-3.9	-0.2	0	-0.5	1.4	-7	3.9		P
UK	-1.1	2	-0.7	-0.4	0.9	0.7	-0.6	-0.7	-0.5	1.1	UK
USA	0	0.7	0.9	-0.4	0.6	-0.5	0.3	0	-0.4	0.3	USA
JAP	-1.1	-1.1	-1.7	0.2	-1.3	1.5	-0.1				JAP

Langfristiger Trend - long term trend - tendance à long terme

	01/92	02/92	03/92	04/92	05/92	06/92	07/92	08/92	09/92	10/92	
EUR12	0.2	0.1	0.1	-0.1	-0.4	-0.5	-0.5	-0.5	-0.5	-0.5	EUR12
B	0.3	0.3	0	-0.2	-0.4	-0.6	-0.7	-0.7	-0.7		B
DK	0.5	1.2	1.7	1.4	1	0.5	-0.7	-1	-1.2	-1.3	DK
D	0.1	0	-0.1	-0.4	-0.6	-0.6	-0.6	-0.6	-0.6	-0.6	D
GR	-0.1	-0.2	0	0.2	0.4	0.2	-0.5	-0.6	-0.7	-0.8	GR
E	-0.3	-0.5	-0.6	-0.6	-0.7	-0.4	-0.3	-0.2	-0.2		E
F	0.2	0.2	0	-0.2	-0.4	-0.4	-0.4	-0.4	-0.4	-0.4	F
IRL	1.3	1.2	1	0.8	0.7	0.6	0.6	0.6	0.6		IRL
I	0.2	0.2	0.1	-0.2	-0.7	-1	-1	-0.9	-0.8	-0.8	I
L	0.1	0.4	0	-0.4	-1.2	-1.2	-1.2	-1.2			L
NL	0.4	0.4	0.4	0.2	-0.1	-0.4	-0.4	-0.4	-0.4	-0.4	NL
P	-0.1	-0.1	-0.2	-0.5	-0.8	-0.7	-0.7	-0.7	-0.7		P
UK	0	0.1	0.2	0.2	0.1	0	-0.1	-0.1	-0.1	-0.1	UK
USA	0.1	0.2	0.3	0.3	0.2	0.1	-0.1	-0.1	-0.1	-0.1	USA
JAP	-1	-1.1	-0.8	-0.3	-0.3	-0.2	-0.2				JAP



Saisonbereinigte Reihen enthalten irreguläre Effekte und Ausreißer, die die langfristige Konjunkturentwicklung überdecken. Der langfristige Trend dagegen zeigt allein die Richtung der konjunkturellen Entwicklung. Er wird durch mehrmalige Anwendung gleitender Durchschnitt berechnet, wodurch die irregulären Effekte eliminiert werden. Am aktuellen Rand können allerdings Fehlinterpretationen nicht ausgeschlossen werden, da hier die gleitenden Durchschnitte geschätzt werden müssen.

Seasonally adjusted series still contain irregularities and outliers which mask longer-term trends. Only the long-term trend, however, is an adequate indicator of economic evolution. It is calculated with the aid of repeatedly computing moving averages, thus eliminating the irregularities. As regards the latest figures, however, false interpretations cannot be ruled out, since here the moving averages have to be estimated.

Des séries corrigées des variations saisonnières contiennent toujours des effets irréguliers et des valeurs aberrantes qui masquent l'évolution conjoncturelle à long terme. En revanche, la tendance à long terme ne montre que l'orientation de l'évolution conjoncturelle. La tendance est déterminée à l'aide de calculs répétés de moyennes mobiles, qui permettent d'éliminer les effets irréguliers. Néanmoins, il n'est pas exclu que les toutes dernières valeurs donnent lieu à des erreurs d'interprétation car ici les moyennes mobiles doivent être estimées.