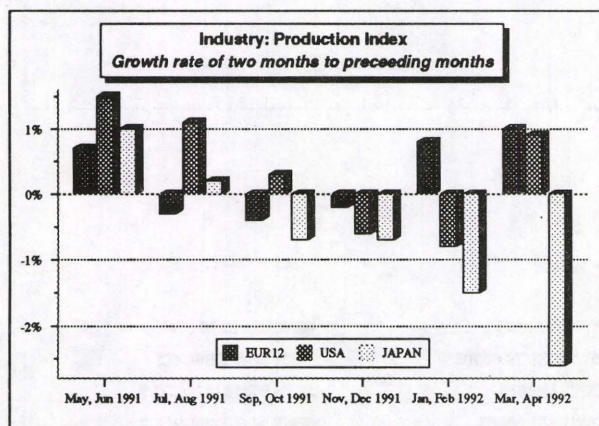


Extract from "Industrial Trends - July 1992"

### Sluggish recovery in European industrial production



**Industrial production** in the European Community (EUR 12) continued to show tentative signs of **recovery** in April 1992, although growth was very modest. The production of capital goods, in particular, remains stagnant. The industrial **production index** for EUR 12, adjusted for the number of working days, was 117.1 (1985 = 100), representing a rate of increase of 0.5 % compared with April 1991. After **seasonal adjustment**, the index for April was 114.5. The seasonally adjusted figure for EUR 12 production in the **last three months for which figures are available** (February, March and April 1992) rose by 0.6 % compared with the cumulative figure for the previous three months. The following rates of growth (where available) were recorded for the individual **EC Member States**:

Denmark 3.4 %; Ireland 2.7 % (estimate); Italy 0.6 %; Greece 0.5 %; Germany (West) 1.1 %; Belgium 0.9 % (estimate); United Kingdom 0.1 %; France -0.1 %; the Netherlands -0.1 %. **The recovery in industrial production is therefore rather slow.**

In the **USA**, industrial production rose by 0.3 % (rate of change for the last three months compared with the previous three months), while in **Japan** the **downturn** in industrial production continued at a rate of -2.9 %.

The situation for the various types of goods was as follows (rates of growth compared with the previous three months):

- Intermediate goods: 0.7 % (USA 0.3 %; Japan - 2.4 %),
- Capital goods: 0.3 % (USA 0.3 %; Japan -5.0 %),
- Consumer goods: 0.4 % (USA 0.3 %; Japan - 4.0 %).

The above figures show that a very cautious recovery is under way in EUR 12, as in the USA, while in Japan manufacturing is experiencing a recession across the board.

Notable quarterly rates of change were recorded in the following branches in individual Member States: German car industry: +4.0 %; UK car industry: +7.1 %; German clothing industry: -4.7 %; Italian clothing industry: +3.4 %.

Manuscript completed on = 20.07.1992

For further information please contact: B. FELDMANN  
Eurostat, L-2920 Luxembourg, tel. 4301-4401 Fax: 4301 4771

Price (excl. VAT) in Luxembourg: Subscription ECU 192

Catalogue number: CA-NL-92-021-EN-C

# INDUSTRIELLE PRODUKTION

# INDUSTRIAL PRODUCTION

# PRODUCTION INDUSTRIELLE

LANGFRISTIGER TREND

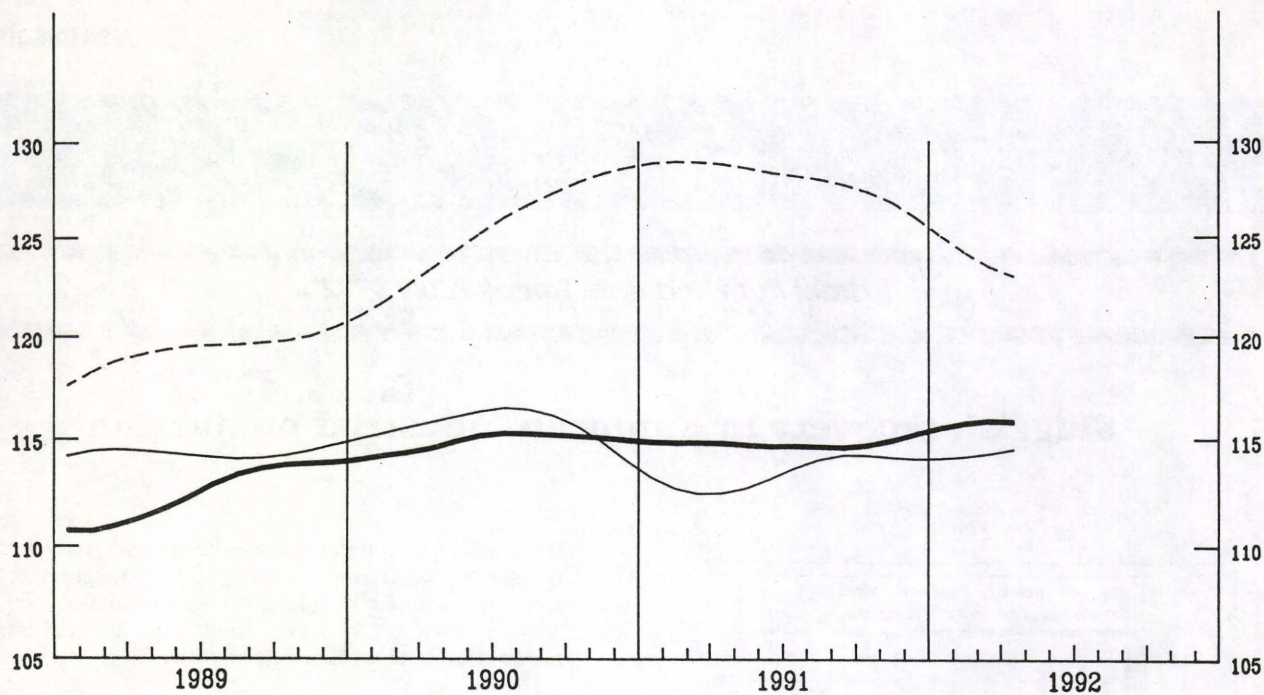
LONG TERM TREND

TENDANCE A LONG TERME

NACE 1-4

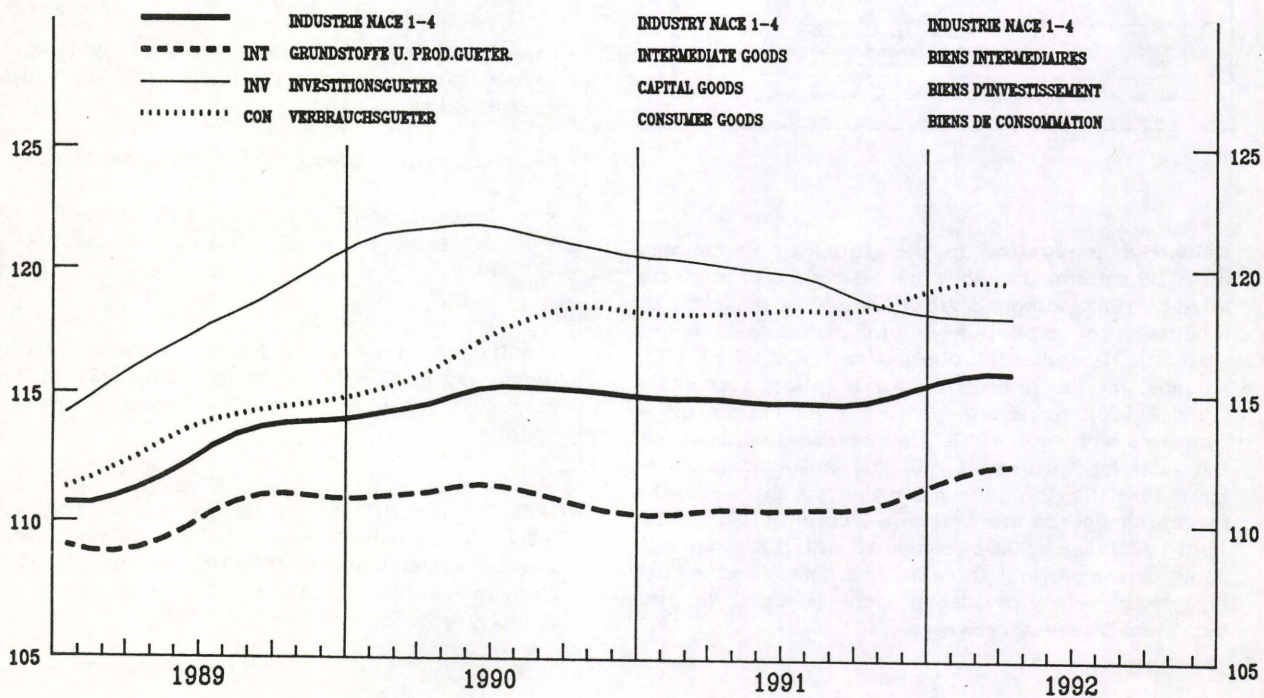
1985 = 100

— USA      — EUR 12      - - - JAPAN



EUR 12

1985 = 100



# BASISINDIKATOREN BASIC INDICATORS INDICATEURS DE BASE

1985 = 100

	Letzte Zahl / Latest figure / Dernier chiffre			Veränderung / Change / Variation		
	Zeitraum Period Période	Pro Arbeitstag Par working day Par jour ouvrable	Saisonbereinigt Seasonally adjusted Désaisonnalisés	Pro Arbeitstag Par working day Par jour ouvrable	Saisonbereinigt Seasonally adjusted Désaisonnalisés	XB (1) XA (2)

**PRODUKTIONSINDIZES**

**INDICES OF PRODUCTION**

**INDICES DE PRODUCTION**

**NACE 1-4**

GESAMTE INDUSTRIE OHNE BAUINDUSTRIE			TOTAL INDUSTRY EXCLUDING CONSTRUCTION		ENSEMBLE DE L'INDUSTRIE SANS BATIMENT	
EUR12	04	92				
			117.1	114.5	1.1	0.6
B	03	92	121.1	115.1	2.2	1.7
DK	04	92	109.9	112.5	3.7	3.4
D	04	92	121.7	121.1	0.7	1.1
GR	04	92	98.5	101.5	-0.3	0.5
E	10	91	130.9	121.6	2.4	2.5
F	04	92	118.6	113.9	1.2	-0.1
IRL	03	92	171.0	161.1	8.7	4.3
I	04	92	120.1	113.5	0.8	0.6
L	02	92	123.0	120.5	0.7	-1.3
NL	04	92	118.0	115.6	2.0	-0.1
P	12	91	131.1	130.8	-3.2	-1.4
UK	04	92	103.9	105.6	-0.4	0.1
USA	04	92	113.1	114.6	2.2	0.3
J	04	92	121.6	122.1	-4.5	-2.9

**GRUNDSTOFFE U. PROD. GUETER**

EUR12			INTERMEDIATE GOODS		BIENS INTERMEDIAIRES	
04	92					
			114.0	110.8	1.5	0.7
B	03	92	120.3	114.7	2.2	1.8
DK	04	92	113.2	113.8	4.0	4.0
D	04	92	118.1	116.5	2.6	2.1
GR	04	92	97.0	97.4	-2.6	1.6
E	10	91	116.2	110.7	0.3	1.5
F	04	92	118.2	113.3	1.2	-0.1
IRL	03	92	169.9	159.9	11.7	8.0
I	04	92	120.6	114.1	1.5	1.2
L	02	92	123.2	119.0	0.2	-0.8
NL	04	92	112.0	111.9	2.5	-0.8
P	12	91	117.8	116.9	-5.8	-0.4
UK	04	92	101.4	102.0	0.3	-0.3
USA	04	92	116.4	118.3	2.5	0.3
J	04	92	122.0	121.2	-5.5	-2.4

**INVESTITIONSGUETER**

EUR12			CAPITAL GOODS INDUSTRIES		BIENS D'INVESTISSEMENT	
04	92					
			119.2	116.9	-1.5	0.3
B	03	92	122.8	114.1	-4.8	-5.9
DK	04	92	111.0	111.9	5.3	4.7
D	04	92	124.3	124.4	-0.7	-0.1
GR	04	92	130.8	127.4	10.9	-5.4
E	10	91	158.8	136.3	-6.3	2.6
F	04	92	105.7	103.0	-3.4	-0.6
IRL	03	92	256.6	230.3	11.2	4.9
I	04	92	120.7	111.0	-3.0	0.0
L	02	92	102.2	115.8	5.4	-5.9
NL	04	92	124.7	116.6	0.9	2.6
P	12	91	116.2	109.9	-6.7	-2.1
UK	04	92	106.4	110.9	-3.3	-0.8
USA	04	92	115.6	117.6	-1.7	0.3
J	04	92	125.2	128.9	-6.8	-5.0

**VERBRAUCHSGUETER**

EUR12			CONSUMER GOODS		BIENS DE CONSOMMATION	
04	92					
			120.3	118.3	1.5	0.5
B	08	91	102.1	111.2	-2.6	-0.9
DK	04	92	106.9	111.4	2.5	2.5
D	04	92	124.4	123.9	-0.3	1.1
GR	04	92	92.7	101.5	0.3	0.9
E	10	91	144.1	131.4	7.6	3.6
F	04	92	127.0	121.6	3.7	-0.0
IRL	03	92	131.0	131.9	4.2	1.1
I	04	92	118.6	113.0	2.0	-1.2
L	02	92	134.2	131.7	-1.2	-0.4
NL	04	92	124.0	122.1	0.8	0.3
P	12	91	116.7	124.6	-4.8	-6.5
UK	04	92	107.9	110.3	0.5	1.6
USA	04	92	114.0	117.3	4.4	0.3
J	04	92	118.1	115.5	-2.0	-4.0

**UMSATZ**

**TURNOVER**

**CHIFFRE D'AFFAIRES**

**NACE 1-4**

GESAMTE INDUSTRIE OHNE BAUINDUSTRIE			TOTAL INDUSTRY EXCLUDING CONSTRUCTION		ENSEMBLE DE L'INDUSTRIE SANS BATIMENT	
EUR12	02	92				
			132.1	133.0	1.6	-0.7

**ABHAENIG BESCHAEFTEGTE**

**NUMBER OF EMPLOYEES**

**NOMBRE DE SALARIÉS**

**NACE 1-4**

GESAMTE INDUSTRIE OHNE BAUINDUSTRIE			TOTAL INDUSTRY EXCLUDING CONSTRUCTION		ENSEMBLE DE L'INDUSTRIE SANS BATIMENT	
EUR12	III	91				
			97.6	97.0	-1.9	-0.9

XB (1) - Letzte 3 Monate gegenüber dem entsprechenden  
Verjahreszeitraum  
- Last 3 months compared with corresponding  
months of previous year  
- Les 3 derniers mois par rapport aux mois  
correspondants de l'année précédente

XA (2) - Letzte 3 Monate gegenüber den vorhergehenden  
3 Monaten  
- Last 3 months compared with previous 3 months  
- Les 3 derniers mois par rapport aux 3 mois  
précédents

**PRODUKTIONSINDIZES - SAISONBEREINIGT**  
**INDICES OF PRODUCTION - SEASONALLY ADJUSTED**  
**INDICES DE PRODUCTION - DÉSAISONNALISÉS**

1985 = 100

	1989	1990	1991	1991			1992			04		
				10	11	12	01	02	03			
NACE 1-4 GESAMTE INDUSTRIE OHNE BAUINDUSTRIE				TOTAL INDUSTRY EXCLUDING CONSTRUCTION						ENSEMBLE DE L'INDUSTRIE SANS BATIMENT		
EUR12	112.9	115.1	115.1	114.8	115.2	113.2	115.4	115.9	115.5	114.5	EUR12	
B	112.7	118.4	114.6	112.5	115.8	116.0	116.1	119.3	115.1	:	B	
DK	107.2	107.8	110.2	112.6	106.3	109.2	111.3	111.8	113.5	112.5	DK	
D	112.1	117.9	121.2	120.5	120.8	119.7	120.6	122.0	122.2	121.1	D	
GR	105.3	103.3	101.7	101.8	98.7	99.1	103.3	100.5	100.6	101.5	GR	
E	116.1	116.1	116.0	121.6	:	:	:	:	:	:	E	
F	112.0	114.1	114.4	114.0	113.9	114.1	114.8	114.2	114.3	113.9	F	
IRL	137.4	143.8	148.7	153.1	159.2	149.3	161.1	159.3	161.1	:	IRL	
I	118.6	117.8	115.4	113.4	118.6	111.6	116.0	116.9	117.6	113.5	I	
L	118.6	118.0	118.6	115.3	121.5	117.7	115.6	120.5	:	:	L	
NL	105.7	109.1	113.2	113.6	115.0	114.3	116.3	114.4	115.1	115.6	NL	
P	124.1	135.3	135.2	135.2	135.8	130.8	:	:	:	:	P	
UK	109.9	109.3	106.0	106.3	106.0	105.7	104.8	106.0	105.1	105.8	UK	
USA	114.5	115.7	113.4	114.8	114.5	113.8	112.9	113.6	114.0	114.6	USA	
J	119.7	125.3	128.2	128.0	127.9	126.0	125.5	124.6	121.6	122.1	J	
GRUNDSTOFFE U. PROD. GUETER				INTERMEDIATE GOODS						BIENS INTERMÉDIAIRES		
EUR12	110.7	111.2	111.1	111.0	111.1	109.7	111.7	112.4	111.8	110.8	EUR12	
INVESTITIONSGUETER				CAPITAL GOODS INDUSTRIES						BIENS D'INVESTISSEMENT		
EUR12	118.0	121.9	120.3	118.5	118.5	115.8	117.2	118.0	117.6	116.9	EUR12	
VERBRAUCHSGUETER				CONSUMER GOODS						BIENS DE CONSOMMATION		
EUR12	113.0	116.4	117.8	118.9	119.3	117.0	119.3	119.8	119.2	118.3	EUR12	

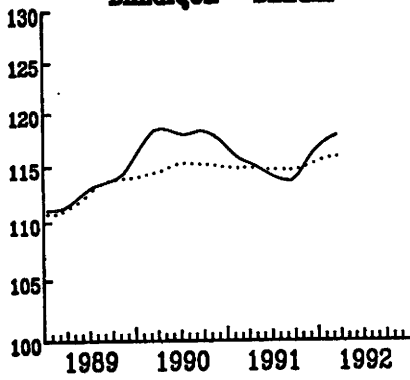
**INDUSTRIELLE PRODUKTION**  
LANGFRISTIGER TREND

**INDUSTRIAL PRODUCTION**  
LONG TERM TREND

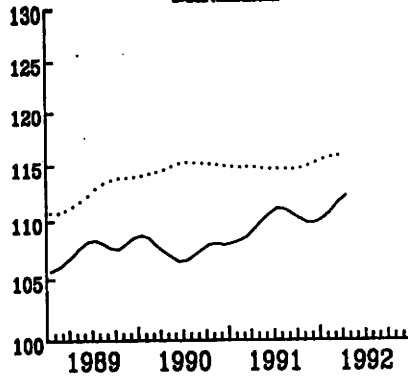
**PRODUCTION INDUSTRIELLE**  
TENDANCE A LONG TERME

NACE 1-4 1985=100

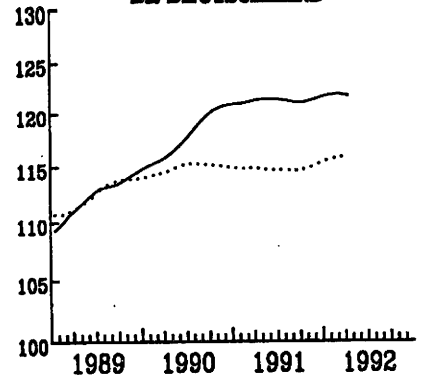
**BELGIQUE -- BELGIE**



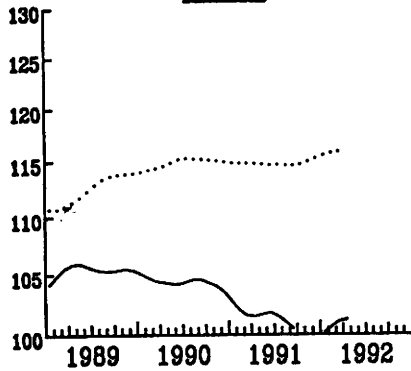
**DANMARK**



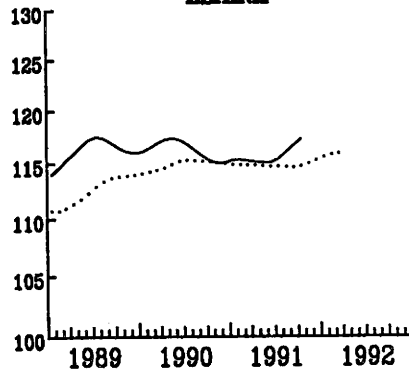
**BE DEUTSCHLAND**



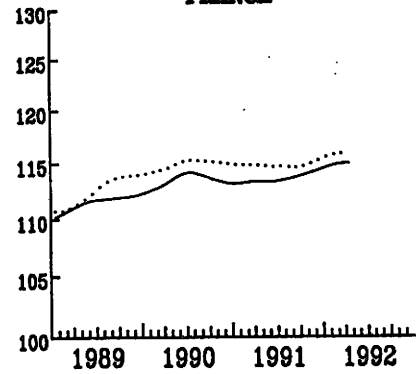
**HELLAS**



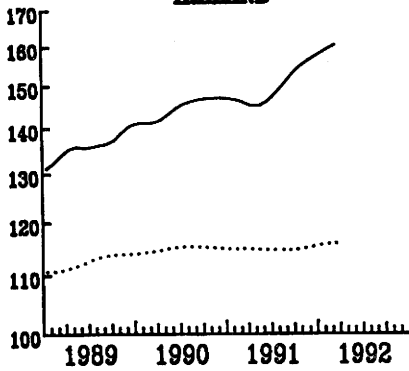
**ESPAÑA**



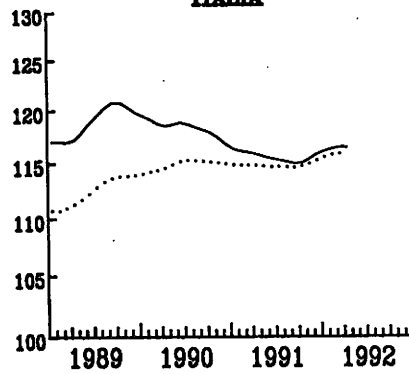
**FRANCE**



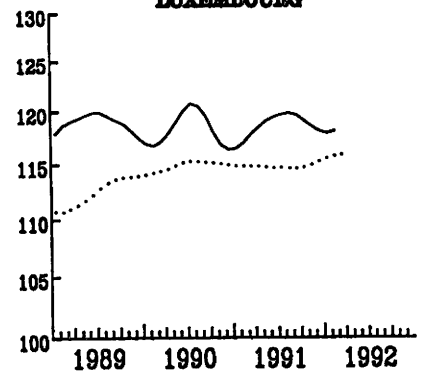
**IRELAND**



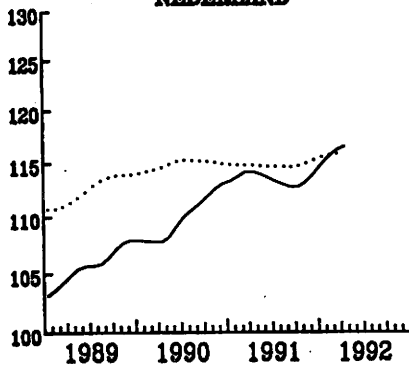
**ITALIA**



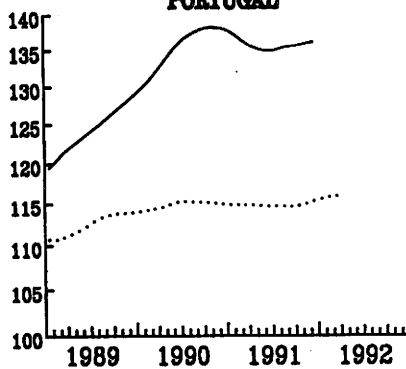
**LUXEMBOURG**



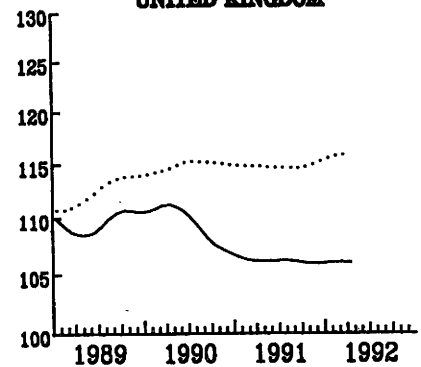
**NEDERLAND**



**PORTUGAL**



**UNITED KINGDOM**



..... EUR 12

SEMIFACH-LOGARITMIŠKA ŠKALA

SEMI-LOGARITHMIC SCALE

ÉCHELLE SEMI-LOGARITHMIQUE

**PRODUKTIONSINDIZES - PRO ARBEITSTAG**  
**INDICES OF PRODUCTION - PER WORKING DAY**  
**INDICES DE PRODUCTION - PAR JOUR OUVRABLE**

1985 = 100

	1989	1990	1991	1991			1992			
				02	03	04	02	03	04	

NACE 1-4

GESAMTE INDUSTRIE OHNE BAUINDUSTRIE

TOTAL INDUSTRY EXCLUDING CONSTRUCTION

ENSEMBLE DE L'INDUSTRIE SANS BATIMENT

EUR12	112.9	115.1	115.1	119.4	120.6	116.6	120.2	123.3	117.1	EUR12
B	112.7	118.4	114.6	118.9	121.5	118.8	124.6	121.1	:	B
DK	107.2	107.8	110.2	103.9	109.9	109.9	106.9	118.9	109.9	DK
D	112.1	117.9	121.2	117.9	127.9	122.8	120.2	129.3	121.7	D
GR	105.3	103.3	101.7	98.2	100.6	98.7	98.5	99.6	98.5	GR
E	116.1	116.1	116.0	115.2	112.9	119.6	:	:	:	E
F	112.0	114.1	114.4	120.6	116.2	117.2	120.5	119.2	118.6	F
IRL	137.4	143.8	148.7	149.1	154.1	145.5	158.2	171.0	:	IRL
I	118.6	117.8	115.4	124.3	124.8	120.1	126.1	126.0	120.1	I
L	118.6	118.0	118.6	121.8	121.2	126.0	123.0	:	:	L
NL	105.7	109.1	113.2	133.0	113.0	112.0	127.0	120.0	118.0	NL
P	124.1	135.3	135.2	141.8	141.6	135.4	:	:	:	P
UK	109.9	109.3	106.0	114.6	115.0	104.1	113.1	115.4	103.9	UK
USA	114.5	115.7	113.4	112.4	110.4	110.6	113.9	113.7	113.1	USA
J	119.7	125.3	128.2	125.6	137.3	127.8	120.6	130.8	121.6	J

GRUNDSTOFFE U. PROD. GUETER

INTERMEDIATE GOODS

BIENS INTERMEDIAIRES

EUR12	110.7	111.2	111.1	118.4	116.7	112.5	119.3	119.6	114.0	EUR12
-------	-------	-------	-------	-------	-------	-------	-------	-------	-------	-------

INVESTITIONSGUETER

CAPITAL GOODS INDUSTRIES

BIENS D'INVESTISSEMENT

EUR12	118.0	121.9	120.3	119.5	127.3	122.1	118.0	126.2	119.2	EUR12
-------	-------	-------	-------	-------	-------	-------	-------	-------	-------	-------

VERBRAUCHSGUETER

CONSUMER GOODS

BIENS DE CONSOMMATION

EUR12	113.0	116.4	117.8	119.2	122.5	120.4	121.6	125.8	120.3	EUR12
-------	-------	-------	-------	-------	-------	-------	-------	-------	-------	-------

### INDUSTRIELLE PRODUKTION

Veränderung gegenüber dem  
Vorjahresquartal

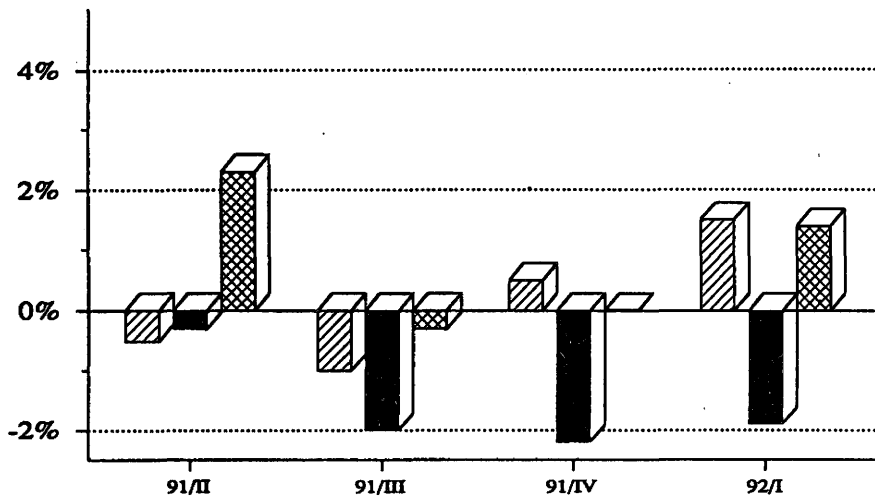
### INDUSTRIAL PRODUCTION

Change from the corresponding quarter  
of the previous year

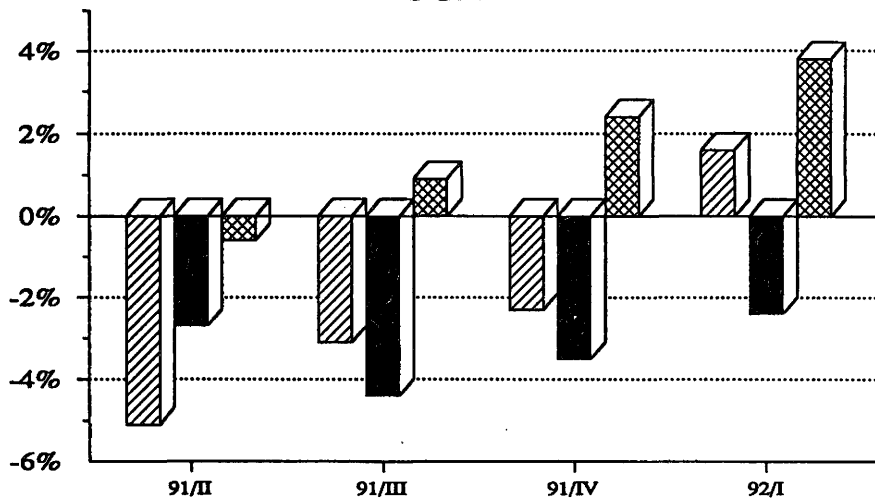
### PRODUCTION INDUSTRIELLE

Variation par rapport au trimestre  
de l'année précédente

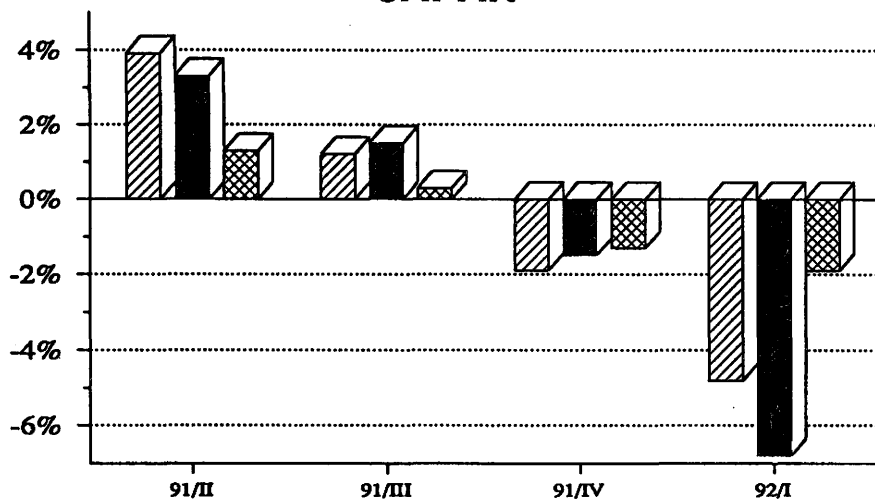
#### EUR 12



#### USA



#### JAPAN



Grundstoffe und Produktionsgüter

Investitionsgüter

Verbrauchsgüter

Intermediate goods

Capital goods

Consumption goods

Biens intermédiaires

Biens d'investissement

Biens de consommation

# ERZEUGERPREISINDEX

# PRODUCER PRICE INDEX

# INDICE DES PRIX A LA PRODUCTION

EUR 12 - 1985 = 100

IN LANDESWAHRUNGEN

- Industrie NACE 1-4
- Rohstoffe und Halbwaren
- - - Investitionsgueter
- ..... Verbrauchsgueter

IN ECU

- - - Industrie NACE 1-4

BASED ON NATIONAL CURRENCIES

- Industry NACE 1-4
- Intermediate Goods
- Capital Goods
- Consumer Goods

IN ECU

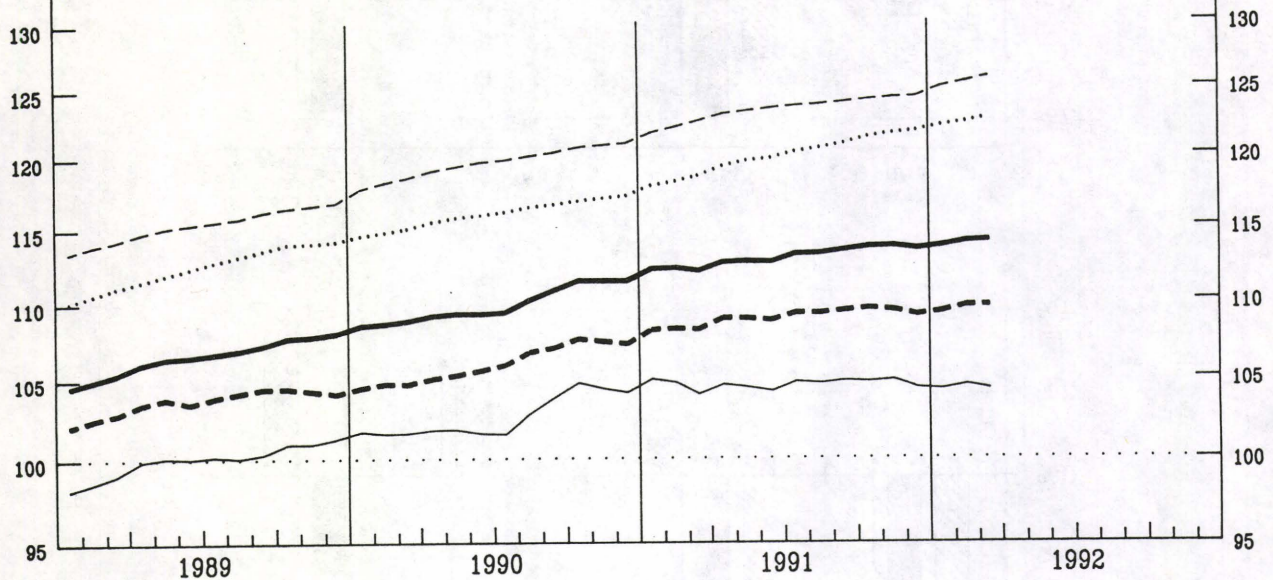
- Industry NACE 1-4

BASE SUR MONNAIES NATIONALES

- Industrie NACE 1-4
- Biens Intermediaires
- Biens d'Investissement
- Biens de Consommation

EN ECU

- Industrie NACE 1-4



EINFACH-LOGARITHISCHE SKALA

SEMI-LOGARITHMIC SCALE

ECHELLE SEMI-LOGARITHMIQUE

## VERAENDERUNG % T/T-12

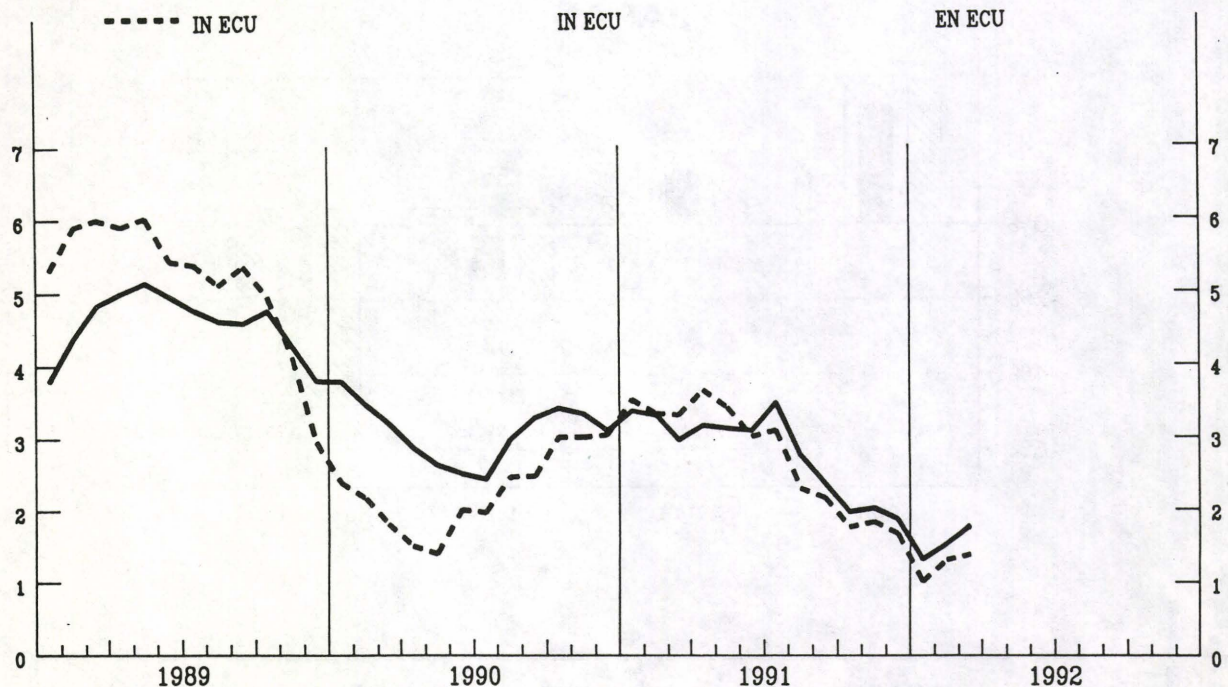
## VARIATION % T/T-12

## VARIATION % T/T-12

- IN LANDESWAHRUNGEN
- - - IN ECU

- BASED ON NATIONAL CURRENCIES
- IN ECU

- BASE SUR MONNAIES NATIONALES
- EN ECU





**GESAMTE INDUSTRIE OHNE BAUINDUSTRIE**  
**TOTAL INDUSTRY EXCLUDING CONSTRUCTION**  
**ENSEMBLE DE L'INDUSTRIE SANS BATIMENT**  
**NACE 1-4**  
**PREISINDIZES - PRICE INDICES - INDICES DE PRIX**

1985 = 100

	1989	1990	1991							1992				Letzte Zahl Latest figure Dernier chiffre	
			1991							1992				%	%
			10	11	12	01	02	03	04	T/T-12	T/T-1				
<b>IN LANDESWAHRUNG</b>			<b>IN NATIONAL CURRENCY</b>							<b>EXPRIMES EN MONNAIE NATIONALE</b>					
EUR12	106.5	109.8	113.6	113.6	113.4	113.6	113.9	114.0	:	1.8	0.0	EUR12			
B	93.0	93.6	93.4	93.2	92.1	92.1	92.4	92.6	93.1	1.1	0.4	B			
DK	107.0	108.8	111.0	111.0	111.0	109.0	109.0	109.0	110.0	0.9	0.9	DK			
D	99.3	101.0	104.4	104.3	104.1	104.0	104.3	104.6	104.9	1.9	0.3	D			
GR	163.3	189.0	232.2	231.8	230.8	234.4	235.2	239.0	240.7	11.5	0.7	GR			
E	109.2	111.5	113.6	113.8	113.6	114.0	114.3	114.2	114.5	1.5	0.3	E			
F (1)	105.7	107.5	108.7	108.8	108.9	108.6	108.3	108.0	:	-0.5	-0.3	F (1)			
IRL	112.7	113.0	114.8	114.9	115.1	115.1	115.7	116.4	116.5	2.0	0.1	IRL			
I	113.1	117.8	122.2	122.4	122.2	122.9	123.3	123.3	123.7	1.8	0.3	I			
L	100.8	98.8	95.9	95.5	94.7	94.0	94.2	94.2	94.9	-2.4	0.8	L			
NL	86.0	87.3	90.0	90.0	89.8	89.9	90.0	90.1	90.1	1.0	:	NL			
P	:	:	:	:	:	:	:	:	:	:	:	P			
UK	111.6	117.6	123.7	123.7	123.5	124.0	124.8	124.7	126.1	2.4	1.1	UK			
<b>IN ECU</b>			<b>IN ECU</b>							<b>EXPRIMES EN ECU</b>					
EUR12	103.6	106.0	109.5	109.3	109.0	109.2	109.6	109.6	:	1.4	0.0	EUR12			
B	96.3	99.1	99.5	99.5	98.6	98.5	98.7	98.9	99.2	1.7	0.3	B			
DK	106.6	111.1	112.5	112.2	112.3	110.4	110.3	110.2	111.2	0.4	0.8	DK			
D	106.8	109.6	113.5	113.7	113.8	113.5	113.6	114.0	114.1	2.7	0.1	D			
GR	95.6	98.2	106.6	105.1	103.5	104.3	104.4	106.0	105.3	4.1	-0.6	GR			
E	108.0	111.2	113.4	113.7	112.7	113.8	114.8	114.2	114.6	0.2	0.3	E			
F (1)	102.3	105.7	105.8	105.9	106.3	106.1	105.8	105.8	:	0.2	0.0	F (1)			
IRL	103.8	105.3	107.2	107.4	107.6	107.5	108.0	108.7	108.5	2.4	-0.2	IRL			
I	108.3	112.0	115.4	115.1	114.7	115.6	116.1	116.2	116.0	0.9	-0.1	I			
L	104.4	104.6	102.1	102.0	101.3	100.5	100.6	100.6	101.2	-1.7	0.6	L			
NL	92.5	94.9	98.0	98.2	98.2	98.3	98.2	98.4	98.2	1.8	-0.2	NL			
P	:	:	:	:	:	:	:	:	:	:	:	P			
UK	97.7	97.1	103.6	102.9	102.0	102.3	103.3	103.0	105.0	0.3	2.0	UK			

(1) Schätzung - Estimation Eurostat

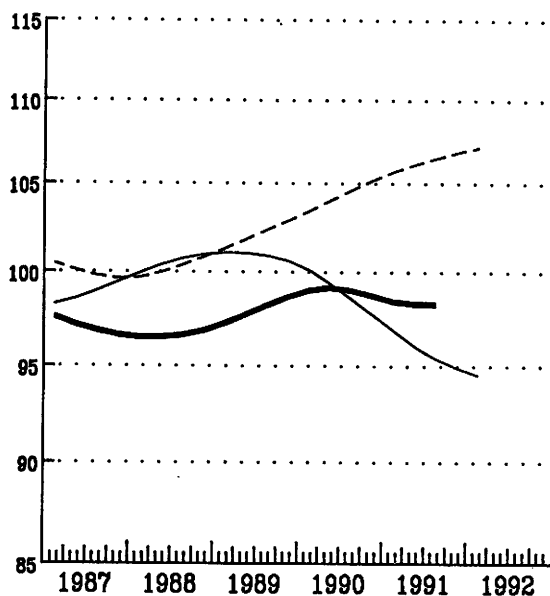


**INDEX DER BESCHAFTIGUNG  
NACE 1-4**

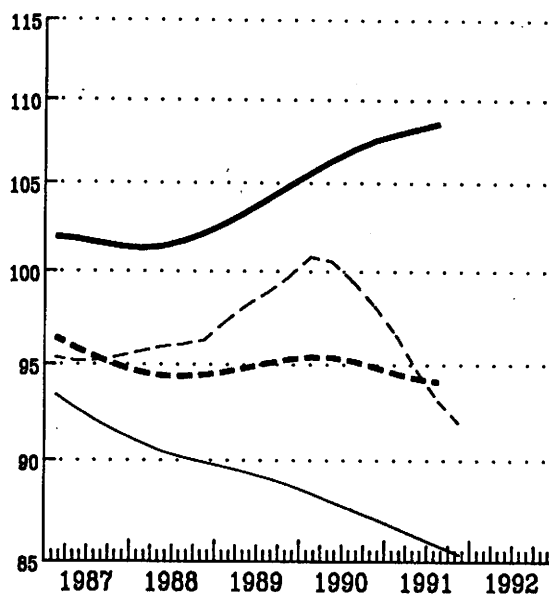
**INDEX OF EMPLOYMENT  
NACE 1-4**

**INDICE DE L'EMPLOI  
NACE 1-4**

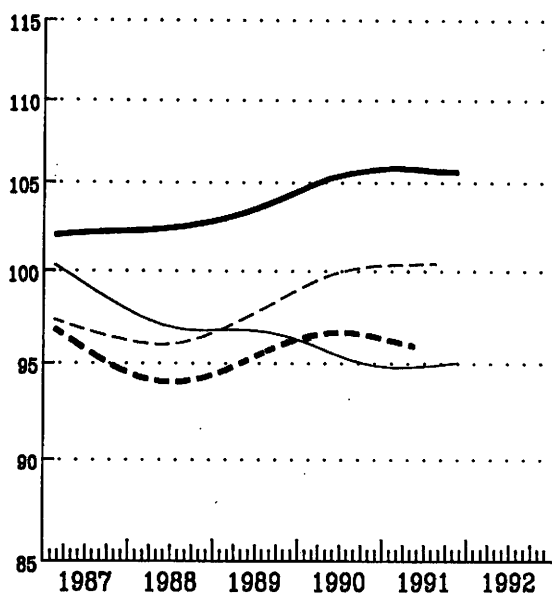
1985=100



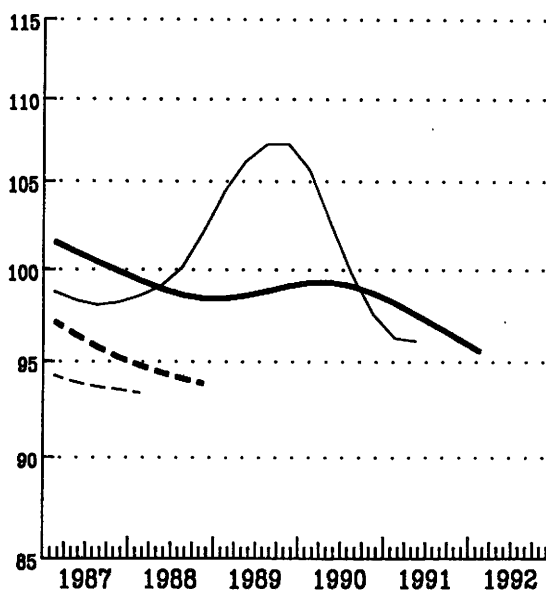
— EUR 12    ..... USA    - - - - Japan



— Deutschland    - - - - France  
..... Italia    - - - - United Kingdom



— Nederland    - - - - Belgique  
..... Luxembourg    - . - . Ireland



— Danmark    - - - - Espana  
..... Greece    - . - . Portugal

