

Domestic deliveries of hard coal and coke in 1991

According to provisional estimates, 328.6 million tonnes of hard coal were delivered on the home markets of the Community Member States in 1991 (1), as opposed to 319.5 million tonnes in 1990. Some of the 130.7 million tonnes demand (39.7%) was met by imports from non-Community countries.

The main consumers for coal were:

- pithead and public supply coal-fired power stations, which took 212.3 million tonnes of steam coal, an increase of 9 million tonnes over the previous year.
- the steel industry, which took 64.3 million tonnes of coking coal, compared with 67.8 million tonnes in 1990.

In the individual Member States, the picture was as follows:

- steam coal:

in Germany, the 8.0% increase in deliveries over 1990 was attributable mainly to the increase in territory following unification. In Denmark, the increased (31.4%) deliveries to thermal power stations is due to the compensation of the reduction of electricity imports. In France, there was a 19.2% increase in deliveries due to an increased electricity consumption. The opposite effect is noted in Belgium where electricity production from coal fired stations has lost importance (-18.6%).

- coking coal:

the downturn in the steel industry led to a fall-off in coking coal deliveries in most Member States. In Belgium, for example, there was a drop of 8.3%, in Germany 6.1%, in Italy 5.3%, in France 10.8% and in the United Kingdom 2.0%.

Coke deliveries to the iron and steel industry:

at 42.7 million tonnes, total deliveries in the Community in 1991 were 2.6 million tonnes down on the 1990 figure.

(1) 1991 figures for the Community refer to its territorial situation after 03.10.90
1990 figures for the Community refer to its territorial situation before 03.10.90.

Manuscript completed on = 17.04.1992

For further information please contact:
Eurostat, L-2920 Luxembourg, tel. 4301-3395 Fax: 4301 4771

Price (excl. VAT) in Luxembourg: Subscription ECU 192

Catalogue number: CA-NL-92-014-EN-C

LIEFERUNGEN
Vorläufige JahreszahlenDELIVERIES
Yearly provisional figuresLIVRAISONS
Chiffres annuels provisoires

1991 1991 1991

! EUR 12 ! EUR 10 ! B ! DK ! D ! GR ! E ! F ! IRL ! I ! L ! NL ! P ! UK !

STEINKOHLE
1000 T (T=T)HARD COAL
1000 T (T=T)HOUILLE
1000 T (T=T)

Gesamtlieferungen

Total inland deliveries

Livraisons interieures totales

1989	!	313197	279230	14295	10590	78375	1276	30235	29348	3441	20821	195	12935	3732	107954
1990	!	319502	284318	14903	10067	80319	1385	30193	30385	3219	21139	197	14851	4991	107853
1991	!	328570	292789	13502	12943	85696	2010	31392	31435	3234	19514	203	13639	4389	110613
1990/89 %	!	2,0	1,8	4,3	-4,9	2,5	8,5	-0,1	3,5	-6,5	1,5	1,0	14,8	33,7	-0,1
1991/90 %	!	/	/	-9,4	28,6	/	45,1	4,0	3,5	0,5	-7,7	3,0	-8,2	-12,1	2,6

darunter:

among which:

dont:

Lieferungen an zecheneigene
und öffentliche Kraftwerke (1)Deliveries to public power stations
and to pithead power stations (1)Livraisons aux centrales electriques
des services publics et des mines (1)

1989	!	194301	169794	4634	9645	43917	-	21905	11074	2078	10195	-	7908	2602	80443
1990	!	203259	177699	5617	9122	46386	-	21830	12317	1959	10504	-	9713	3730	82081
1991	!	212287	186506	4570	11983	50087	52	22502	14683	1914	10051	-	8647	3279	84519
1990/89 %	!	4,6	4,7	21,2	-5,4	5,6	-	-0,3	11,2	-5,7	3,0	-	24,4	43,4	2,0
1991/90 %	!	/	/	-18,6	31,4	/	-	3,1	19,2	-2,3	-4,3	-	-11,0	-12,1	3,0

darunter:

among which:

dont:

Zecheneigene Kraftwerke

Pithead power stations

centrales electriques minières

1990	!	:	:	-	-	:	-	-	3668	-	-	-	-	-	36
1991	!	14958	14958	-	-	11428 (2)	-	-	3492	-	-	-	-	-	38

Lieferungen an die Kokereien

deliveries to coking plants

livraisons aux cokeries

1989	!	70572	65697	7080	-	23424	-	4544	9506	-	9134	-	4348	331	12205
1990	!	67823	62999	7132	-	22557	-	4448	9632	-	8614	-	3888	376	11176
1991	!	64330	59412	6542	-	21192	-	4671	8588	-	8157	-	3978	247	10955
1990/89 %	!	-3,9	-4,1	0,7	-	-3,7	-	-2,1	1,3	-	-5,7	-	-10,6	13,6	-8,4
1991/90 %	!	/	/	-8,4	-	/	-	5,0	-10,8	-	-5,3	-	2,3	-34,3	-2,0

STEINKOHLENKOKS
1000 THARD COKE
1000 TCOKE DE FOUR
1000TLieferungen an die Eisen-
und Stahlindustriedeliveries to iron
and steel industrylivraisons a l'industrie
siderurgique

1989	!	47075	43692	5230	-	16131	26	3144	6827	-	5337	1477	2188	239	6476
1990	!	45364	41937	5161	-	14200	17	3217	6765	-	5887	1447	2100	210	6360
1991	!	42721	39239	4728	-	13701	6	3282	6023	-	5103	1344	1971	200	6363
1990/89 %	!	-3,6	-4,0	-1,3	-	-12,0	-34,6	2,3	-0,9	-	10,3	-2,0	-4,0	-12,1	-1,8
1991/90 %	!	/	/	-8,4	-	/	-64,7	2,0	-11,0	-	-13,3	-7,1	-6,1	-4,8	-

(1) Einschliesslich Bergbauverbundkraftwerke und Bundesbahnkraftwerke (B.R. Deutschland)
Including Bergbauverbundkraftwerke and Federal railway power stations (B.R. Deutschland)
Y compris les Bergbauverbundkraftwerke et les centrales des chemins de fer federaux (B.R. Deutschland)

(2) Zechenkraftwerke / Pithead power stations / Centrales electriques minières : Deutschland 1751000 T (1991)

Keine Vergleichbarkeit 1991 / 1990 -wegen Bruchs in der Reihe B.R. Deutschland
No comparison 1991 / 1990 -because break in series for Germany
Pas de comparaison 1991 / 1990 -car rupture de serie pour l'Allemagne

Inhaltswiedergabe nur mit
Quellennachweis gestattet

Reproduction is subject to
acknowledgement of the source

Reproduction subordonnee a
l'indication de la source

Extract from "Industrial Trends - May 1992"

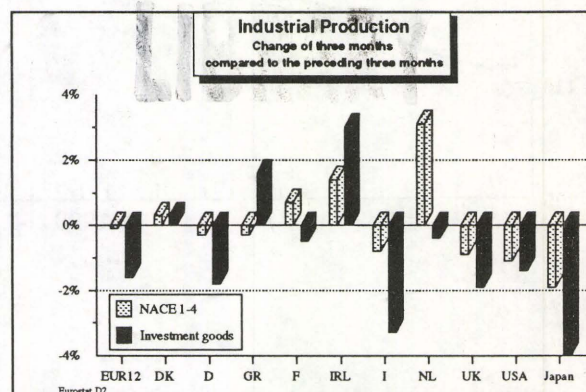
Capital goods production down

February 1992 saw continuing stagnation in European industrial output. In particular, in the capital goods industry, which ought to fuel the next recovery, there was a fall in output. The **production index** for the European Community (EUR 12), adjusted for the number of working days, is currently 119.5 (1985=100), which is 0.1 % up on the figure for February 1991. **Capital goods production** fell by 2.0 % during the same period. The **seasonally adjusted index** stood at 115.3 in February (for industry as a whole), as against 114.9 in January.

A comparison between the EC and the USA and Japan shows a distinct downward trend in worldwide **production of capital goods**: compared with the cumulative value for the **three preceding months**, the seasonally adjusted production index for the three months December, January and February was down 1.6 % in EUR 12, 1.4 % in the USA and 4.0 % in Japan.

The individual EC Member States, with the exception of Ireland and Greece, currently present a relatively uniform picture: the rate of change for the last three winter months compared with the cumulative figures for the 1991 autumn months was as follows (total industrial production, followed by the capital goods industry in brackets): Netherlands 3.1 % (-0.4 %) [estimated], Ireland 1.4 % (3.0 %) [estimated], France 0.7 % (-0.5 %), Denmark 0.3 % (0.3 %), Germany (West) -0.3 % (-1.8 %), Greece -0.3 % (1.6 %) [estimated], Italy -0.8 % (-3.3 %) and United Kingdom -0.9 % (-1.9 %).

Thus industrial production is stagnating or declining in most EC countries, with particularly sharp falls in capi-



tal goods production in the vast majority of cases.

The three months growth rate is particularly striking in the following branches: **Mechanical engineering**: France +1.5 %, United Kingdom -2.7 %, Germany -3.4 %, Italy -5.6 %; **Car industry**: Germany +2.8 %, France +0.3 %, United Kingdom -2.3 %, Italy -6.4 %.

Manuscript completed on = 14.05.1992

For further information please contact: B. FELDMANN
Eurostat, L-2920 Luxembourg, tel. 4301-4401 Fax: 4301 4771

Price (excl. VAT) in Luxembourg: Subscription ECU 192

Catalogue number: CA-NL-92-015-EN-C

29.2500

INDUSTRIELLE PRODUKTION

INDUSTRIAL PRODUCTION

PRODUCTION INDUSTRIELLE

LANGFRISTIGER TREND

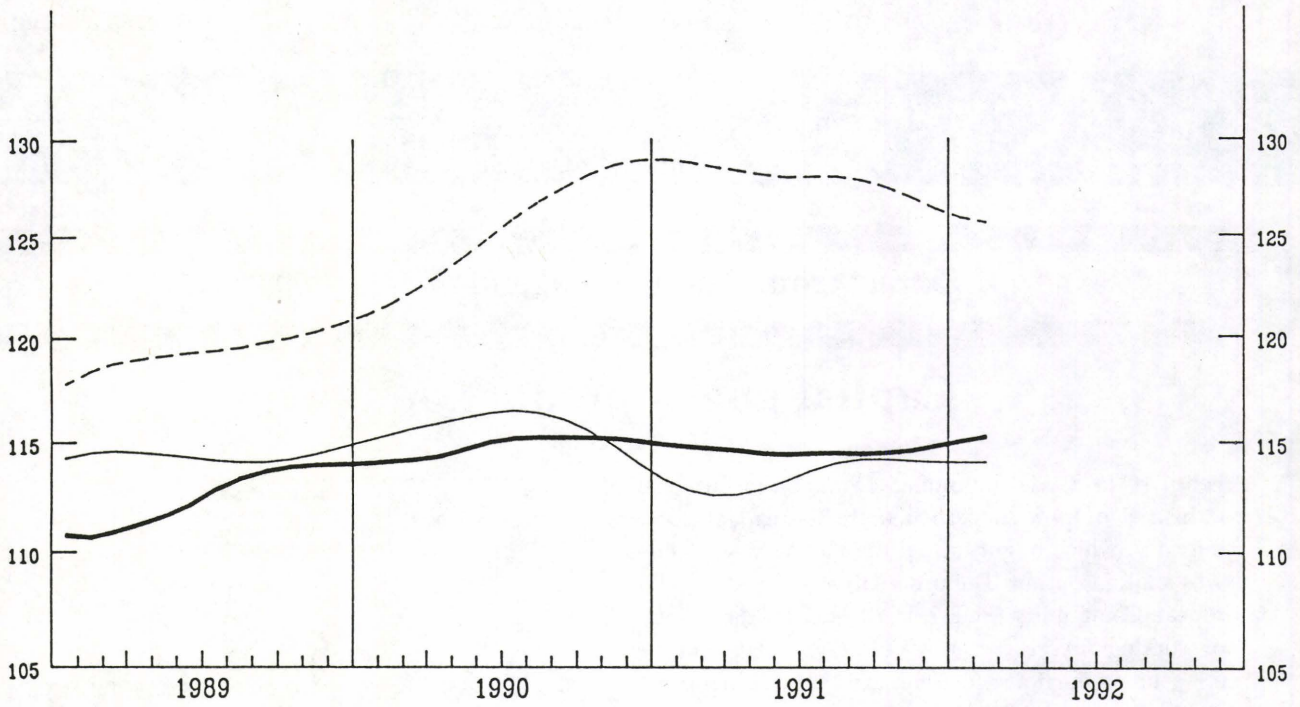
LONG TERM TREND

TENDANCE A LONG TERME

NACE 1-4

1985 = 100

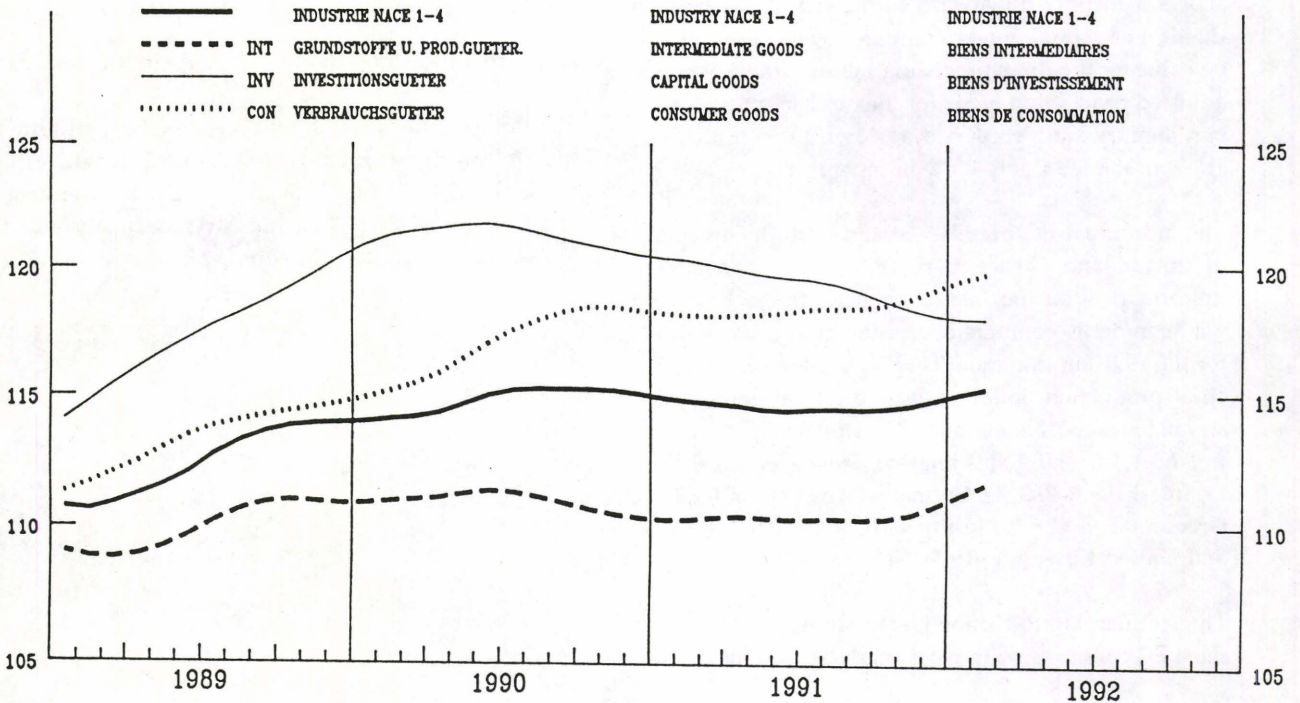
— USA — EUR 12 - - - JAPAN



EUR 12

1985 = 100

—	INDUSTRIE NACE 1-4	INDUSTRY NACE 1-4	INDUSTRIE NACE 1-4
- - -	INT GRUNDSTOFFE U. PROD.GUETER.	INTERMEDIATE GOODS	BIENS INTERMEDIAIRES
—	INV INVESTITIONSGUETER	CAPITAL GOODS	BIENS D'INVESTISSEMENT
.....	CON VERBRAUCHSGUETER	CONSUMER GOODS	BIENS DE CONSOMMATION



BASISINDIKATOREN BASIC INDICATORS INDICATEURS DE BASE

1985 = 100

	Letzte Zahl / Latest figure / Dernier chiffre			Veränderung / Change / Variation	
	Zeitraum Period Période	Pro Arbeitstag Par working day Par jour ouvrable	Saisonbereinigt Seasonally adjusted Désaisonnalisés	Pro Arbeitstag Par working day Par jour ouvrable ZB (1)	Saisonbereinigt Seasonally adjusted Désaisonnalisés ZA (2)

PRODUKTIONSINDIZES

INDICES OF PRODUCTION

INDICES DE PRODUCTION

NACE 1-4 GESAMTE INDUSTRIE OHNE BAUINDUSTRIE	EUR12	02	92	TOTAL INDUSTRY EXCLUDING CONSTRUCTION	119.5	115.3	ENSEMBLE DE L'INDUSTRIE SANS BATIMENT	-0.5	-0.1
B	08	91		98.4		108.1		-5.8	-2.2
DK	02	92		105.9		110.9		1.9	0.3
D	02	92		120.2		121.7		-0.3	-0.3
GR	01	92		97.3		103.1		-2.4	-2.4
E	10	91		130.9		121.6		2.4	2.5
F	02	92		120.5		114.2		0.8	0.7
IRL	01	92		155.2		161.1		6.4	2.7
I	02	92		126.1		116.9		-1.3	-0.8
L	12	91		114.8		117.7		1.6	-0.4
NL	01	92		129.0		116.3		2.1	3.7
P	09	91		142.2		139.3		-0.6	1.7
UK	02	92		111.2		105.5		-1.7	-0.9
USA	02	92		114.0		113.6		0.4	-1.1
J	02	92		121.1		125.1		-2.8	-1.9

GRUNDSTOFFE U. PROD. GUETER	EUR12	02	92	INTERMEDIATE GOODS	118.7	111.8	0.3	BIENS INTERMEDIAIRES	0.3
B	08	91		99.6		109.7		-5.1	-1.8
DK	02	92		108.2		116.1		3.3	2.6
D	02	92		117.9		117.4		0.8	0.3
GR	01	92		101.0		99.5		-5.3	-4.8
E	10	91		116.2		110.7		0.3	1.5
F	02	92		124.1		113.4		0.4	1.2
IRL	01	92		149.6		152.8		10.2	-2.7
I	02	92		124.9		116.5		0.4	-0.2
L	12	91		111.7		115.4		0.0	-0.6
NL	01	92		142.0		113.9		4.6	6.8
P	09	91		122.1		123.1		-2.9	-1.2
UK	02	92		111.9		102.0		0.7	-1.3
USA	02	92		114.7		117.1		-0.6	-0.7
J	02	92		120.8		125.2		-3.3	-1.7

INVESTITIONSGUETER	EUR12	02	92	CAPITAL GOODS INDUSTRIES	117.2	117.2	-3.0	BIENS D'INVESTISSEMENT	-1.6
B	08	91		93.1		103.5		-6.9	-8.6
DK	02	92		107.0		109.6		1.2	0.3
D	02	92		119.2		124.7		-1.2	-1.8
GR	01	92		109.8		125.7		21.7	7.6
E	10	91		158.8		136.3		-6.3	2.6
F	02	92		106.3		104.7		-1.8	-0.5
IRL	01	92		216.9		227.5		3.7	8.2
I	02	92		122.7		114.8		-7.6	-3.3
L	12	91		127.2		121.3		9.7	-4.8
NL	01	92		109.7		114.4		-0.9	-1.2
P	09	91		115.5		114.3		-6.1	-1.3
UK	02	92		111.2		109.5		-7.3	-1.9
USA	02	92		115.6		116.1		-3.2	-1.4
J	02	92		127.7		129.8		-5.3	-4.0

VERBRAUCHSGUETER	EUR12	02	92	CONSUMER GOODS	121.3	119.6	0.3	BIENS DE CONSOMMATION	-0.2
B	08	91		102.1		111.2		-2.6	-0.9
DK	02	92		104.9		110.2		1.9	0.1
D	02	92		124.8		124.7		-0.9	0.7
GR	01	92		88.5		103.5		-5.6	-2.1
E	10	91		144.1		131.4		7.6	3.6
F	02	92		121.9		121.4		3.2	0.1
IRL	01	92		126.5		139.6		6.4	2.3
I	02	92		130.7		118.2		-0.7	-1.4
L	12	91		124.0		129.2		6.4	3.2
NL	01	92		116.0		121.9		-1.0	0.3
P	09	91		149.6		137.2		1.4	1.6
UK	02	92		109.5		110.3		-2.4	0.8
USA	02	92		116.6		116.8		3.4	-0.5
J	02	92		112.9		117.5		-1.0	-0.7

UMSATZ

TURNOVER

CHIFFRE D'AFFAIRES

NACE 1-4 GESAMTE INDUSTRIE OHNE BAUINDUSTRIE	EUR12	10	91	TOTAL INDUSTRY EXCLUDING CONSTRUCTION	142.9	134.0	1.7	ENSEMBLE DE L'INDUSTRIE SANS BATIMENT	-0.6
---	-------	----	----	---------------------------------------	-------	-------	-----	---------------------------------------	------

ABHAENIG BESCHAEFTE

NUMBER OF EMPLOYEES

NOMBRE DE SALARIÉS

NACE 1-4 GESAMTE INDUSTRIE OHNE BAUINDUSTRIE	EUR12	III	91	TOTAL INDUSTRY EXCLUDING CONSTRUCTION	97.3	96.7	-2.3	ENSEMBLE DE L'INDUSTRIE SANS BATIMENT	-1.0
---	-------	-----	----	---------------------------------------	------	------	------	---------------------------------------	------

Z B(1) - Letzte 3 Monate gegenüber dem entsprechenden Vorjahreszeitraum
- Last 3 months compared with corresponding months of previous year
- Les 3 derniers mois par rapport aux mois correspondants de l'année précédente

Z A(2) - Letzte 3 Monate gegenüber den vorhergehenden 3 Monaten
- Last 3 months compared with previous 3 months
- Les 3 derniers mois par rapport aux 3 mois précédents

PRODUKTIONSINDIZES - SAISONBEREINIGT
INDICES OF PRODUCTION - SEASONALLY ADJUSTED
INDICES DE PRODUCTION - DÉSAISONNALISÉS

1985 = 100

	1989	1990	1991	1991					1992		
				08	09	10	11	12	01	02	
NACE 1-4											
GESAMTE INDUSTRIE OHNE BAUINDUSTRIE				TOTAL INDUSTRY EXCLUDING CONSTRUCTION					ENSEMBLE DE L'INDUSTRIE SANS BATIMENT		
EUR12	112.9	115.1	114.8	113.1	114.0	114.6	114.9	113.0	114.9	115.3	EUR12
B	112.7	118.4	110.5	108.1	:	:	:	:	:	:	B
DK	107.2	107.8	110.2	110.0	110.6	112.6	106.3	109.2	110.4	110.9	DK
D	112.1	117.9	121.2	119.9	121.4	120.6	120.8	119.5	120.4	121.7	D
GR	105.3	103.3	101.3	101.7	107.4	98.9	98.7	98.7	103.1	:	GR
E	116.1	116.1	116.0	114.6	114.9	121.6	:	:	:	:	E
F	112.0	113.9	113.4	113.8	112.7	114.0	114.0	113.9	114.9	114.2	F
IRL	137.4	143.8	148.7	150.6	153.6	153.1	159.2	149.3	161.1	:	IRL
I	118.6	117.8	115.4	112.7	115.4	113.4	118.6	111.6	116.0	116.9	I
L	118.6	118.0	118.6	118.2	121.4	115.3	121.5	117.7	:	:	L
NL	105.7	109.1	113.2	111.8	107.8	113.6	115.0	114.3	116.3	:	NL
P	124.1	135.3	136.1	134.1	139.3	:	:	:	:	:	P
UK	109.9	109.4	106.1	105.7	105.9	106.4	106.0	105.6	104.3	105.5	UK
USA	114.5	115.7	113.4	114.4	114.8	114.8	114.5	113.8	112.9	113.6	USA
J	119.7	125.3	128.2	126.9	127.8	128.0	127.9	126.0	125.5	125.1	J
GRUNDSTOFFE U. PROD. GUETER											
				INTERMEDIATE GOODS					BIENS INTERMEDIAIRES		
EUR12	110.7	111.2	110.6	109.2	109.9	110.8	110.9	109.5	111.1	111.8	EUR12
INVESTITIONSGUETER											
				CAPITAL GOODS INDUSTRIES					BIENS D'INVESTISSEMENT		
EUR12	118.0	121.9	118.4	118.3	119.1	118.7	118.6	116.2	117.4	117.2	EUR12
VERBRAUCHSGUETER											
				CONSUMER GOODS					BIENS DE CONSOMMATION		
EUR12	113.0	116.3	118.7	116.5	118.2	118.9	119.5	117.3	119.1	119.6	EUR12

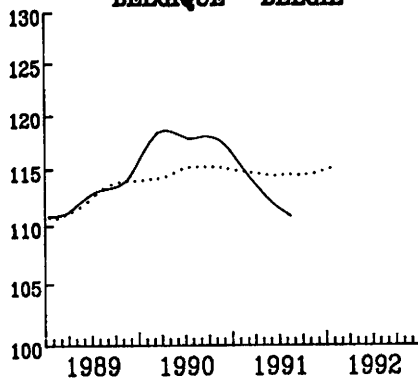
INDUSTRIELLE PRODUKTION
GLEITENDE 3-MONATSDURCHSCHNITTE

INDUSTRIAL PRODUCTION
3 MONTH MOVING AVERAGE

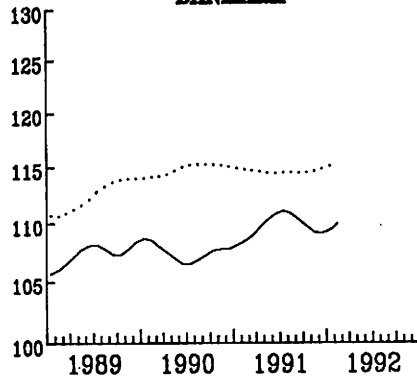
PRODUCTION INDUSTRIELLE
MOYENNE MOBILE SUR 3 MOIS

NACE 1-4 1985=100

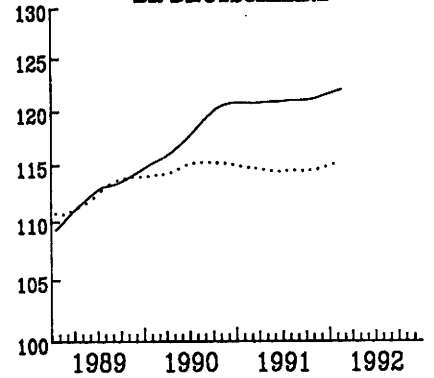
BELGIQUE - BELGIE



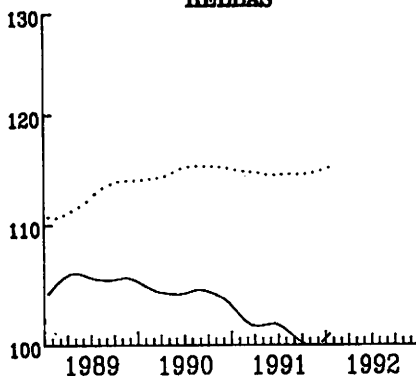
DANMARK



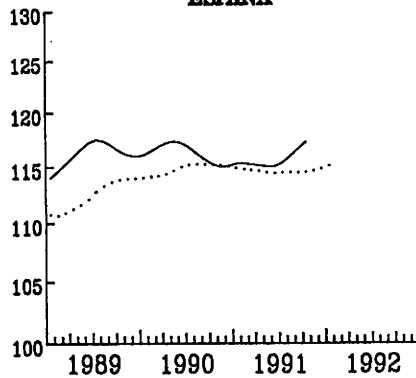
BR DEUTSCHLAND



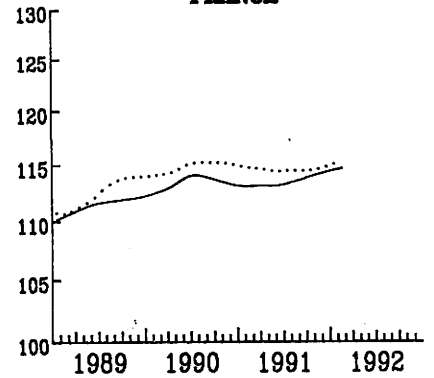
HELLAS



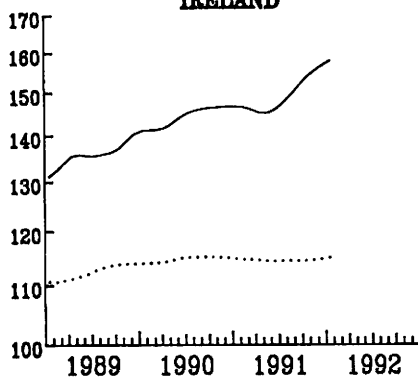
ESPAÑA



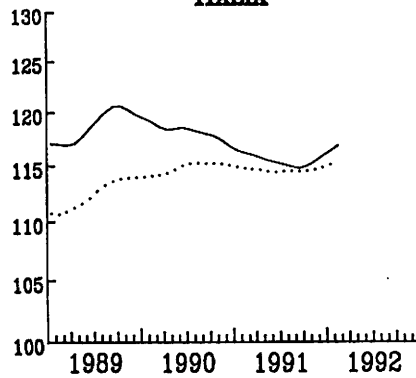
FRANCE



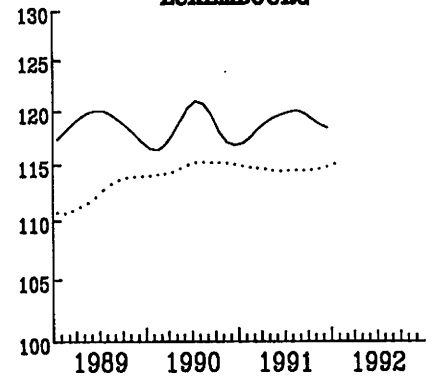
IRELAND



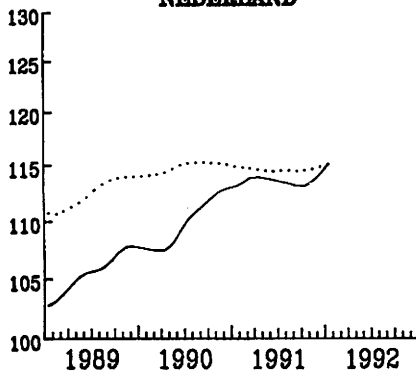
ITALIA



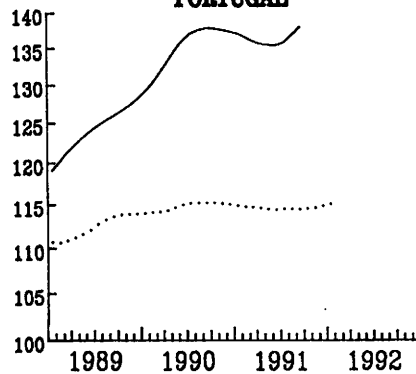
LUXEMBOURG



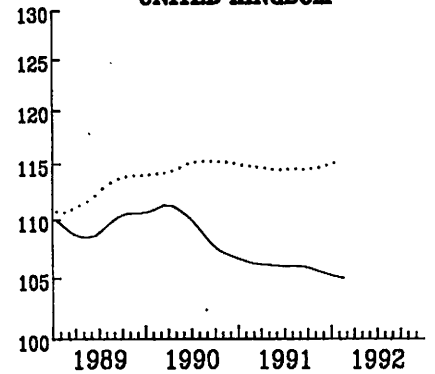
NEDERLAND



PORTUGAL



UNITED KINGDOM



..... EUR 12

KINFACH-LOGARITHMISCHE SKALA

SEMI-LOGARITHMIC SCALE

ECHELLE SEMI-LOGARITHMIQUE

PRODUKTIONSINDIZES - PRO ARBEITSTAG
INDICES OF PRODUCTION - PER WORKING DAY
INDICES DE PRODUCTION - PAR JOUR OUVRABLE

1985 = 100

	1988	1989	1990	1991			1992		
				12	01	02	12	01	02

NACE 1-4

GESAMTE INDUSTRIE OHNE BAUINDUSTRIE

TOTAL INDUSTRY EXCLUDING CONSTRUCTION

ENSEMBLE DE L'INDUSTRIE SANS BATIMENT

EUR12	108.8	112.9	115.1	113.3	115.8	119.4	112.1	115.1	119.5	EUR12
B	108.9	112.7	118.4	111.2	116.7	118.8	:	:	:	B
DK	104.8	107.2	107.8	101.9	105.9	103.9	106.9	104.9	105.9	DK
D	106.5	112.1	117.9	118.9	118.0	117.9	115.9	117.5	120.2	D
GR	103.7	105.3	103.3	103.2	95.1	98.3	97.9	97.3	:	GR
E	111.1	116.1	116.1	107.6	121.0	115.2	:	:	:	E
F	107.5	112.0	113.9	111.5	120.9	120.7	114.0	121.5	120.5	F
IRL	123.1	137.4	143.8	148.4	142.5	149.1	150.2	155.2	:	IRL
I	114.2	118.6	117.8	113.9	116.4	124.3	108.5	115.5	126.1	I
L	110.0	118.6	118.0	114.4	111.8	121.8	114.8	:	:	L
NL	101.0	105.7	109.1	130.0	126.0	133.0	130.0	129.0	:	NL
P	116.2	124.1	135.3	138.8	134.6	141.8	:	:	:	P
UK	109.5	109.9	109.4	103.9	104.0	114.7	104.0	101.8	111.2	UK
USA	111.7	114.5	115.7	111.5	111.3	112.4	111.3	111.2	114.0	USA
J	112.8	119.7	125.3	132.2	119.1	125.6	130.3	115.1	121.1	J

GRUNDSTOFFE U. PROD. GUETER

INTERMEDIATE GOODS

BIENS INTERMEDIAIRES

EUR12	108.2	110.7	111.2	106.8	115.3	118.3	106.8	115.9	118.7	EUR12
-------	-------	-------	-------	-------	-------	-------	-------	-------	-------	-------

INVESTITIONSGUETER

CAPITAL GOODS INDUSTRIES

BIENS D'INVESTISSEMENT

EUR12	110.6	118.0	121.9	129.0	112.8	119.6	124.3	108.9	117.2	EUR12
-------	-------	-------	-------	-------	-------	-------	-------	-------	-------	-------

VERBRAUCHSGUETER

CONSUMER GOODS

BIENS DE CONSOMMATION

EUR12	109.0	113.0	116.3	111.6	117.9	119.3	111.2	117.3	121.3	EUR12
-------	-------	-------	-------	-------	-------	-------	-------	-------	-------	-------

Type 03

INDUSTRIELLE PRODUKTION

Veränderung gegenüber dem
Vorjahresquartal

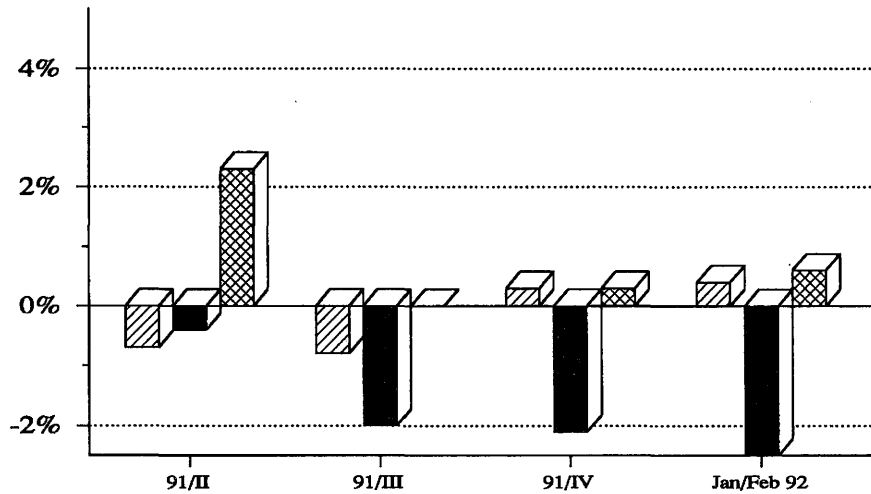
INDUSTRIAL PRODUCTION

Change from the corresponding quarter
of the previous year

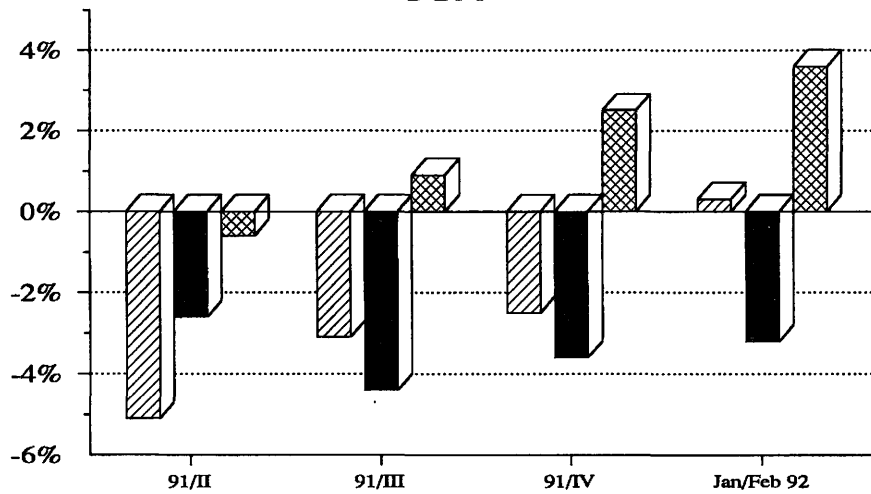
PRODUCTION INDUSTRIELLE

Variation par rapport au trimestre
de l'année précédente

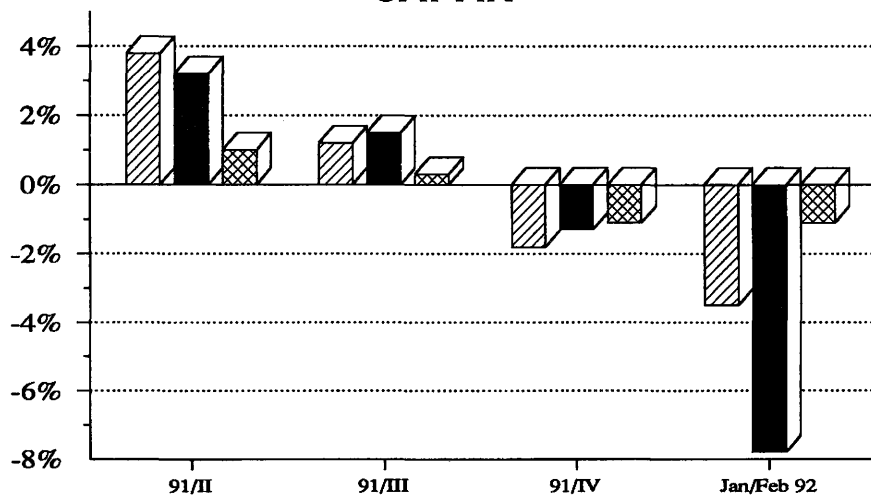
EUR 12



USA



JAPAN



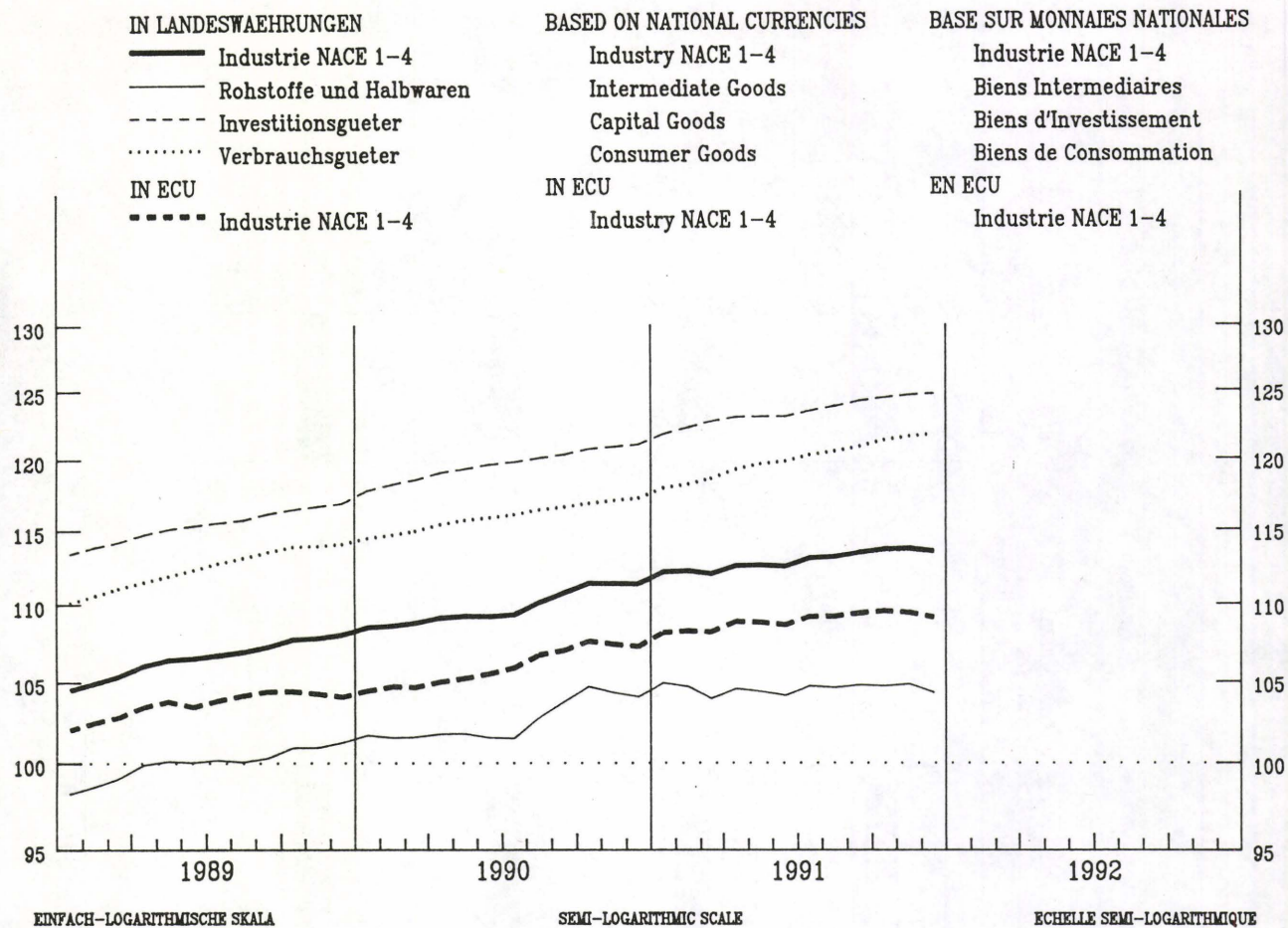
	Grundstoffe und Produktionsgüter	Intermediate goods	Biens intermédiaires
	Investitionsgüter	Capital goods	Biens d'investissement
	Verbrauchsgüter	Consumption goods	Biens de consommation

ERZEUGERPREISINDEX

PRODUCER PRICE INDEX

INDICE DES PRIX A LA PRODUCTION

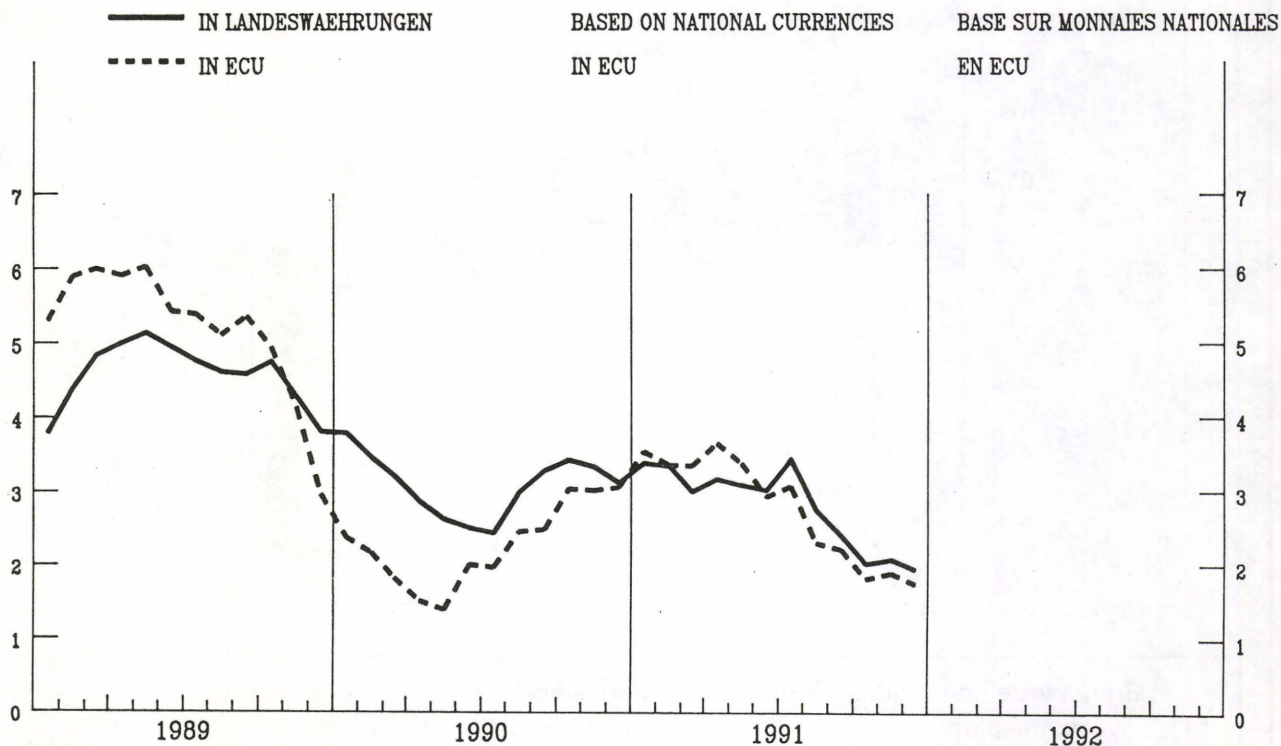
EUR 12 - 1985 = 100



VERAENDERUNG % T/T-12

VARIATION % T/T-12

VARIATION % T/T-12



GESAMTE INDUSTRIE OHNE BAUINDUSTRIE
TOTAL INDUSTRY EXCLUDING CONSTRUCTION
ENSEMBLE DE L'INDUSTRIE SANS BATIMENT
NACE 1-4
PREISINDIZES - PRICE INDICES - INDICES DE PRIX

1985 = 100

	1989	1990	1991						1992		Letzte Zahl Latest figure Dernier chiffre		
			08	09	10	11	12	01	02	%	%		
												T/T-12	

IN LANDESWAERUNG

IN NATIONAL CURRENCY

EXPRIMES EN MONNAIE NATIONALE

EUR12	106.5	109.8	113.2	113.4	113.7	113.7	113.5	:	:	1.9	-0.2	EUR12
B	93.0	93.6	92.8	93.3	93.4	93.2	92.1	92.0	92.2	0.4	0.3	B
DK	107.0	108.8	110.0	111.0	111.0	111.0	111.0	110.0	109.0	:	-0.9	DK
D	99.3	101.0	104.0	104.3	104.4	104.3	104.1	104.0	104.3	2.0	0.3	D
GR	163.3	189.0	227.4	229.3	232.2	231.8	230.8	234.4	:	12.4	1.6	GR
E	109.2	111.5	113.2	113.4	113.6	113.8	113.6	114.0	114.3	0.9	0.3	E
F (1)	105.7	107.6	108.6	109.0	109.1	109.3	109.4	:	:	0.5	0.1	F (1)
IRL	112.7	113.0	114.3	114.5	114.8	114.9	115.1	115.1	115.7	1.9	0.5	IRL
I	113.1	117.8	121.6	121.9	122.2	122.4	122.2	122.9	123.3	1.6	0.4	I
L	100.8	98.8	97.1	96.3	95.9	95.5	94.7	94.0	94.2	-1.9	0.2	L
NL	86.0	87.3	90.1	90.3	90.0	90.0	89.8	89.9	90.0	0.9	0.1	NL
P	:	:	:	:	:	:	:	:	:	:	:	P
UK	111.6	117.6	123.2	123.2	123.7	123.7	123.5	124.0	124.9	3.0	0.2	UK

IN ECU

IN ECU

EXPRIMES EN ECU

EUR12	103.6	106.0	109.2	109.4	109.5	109.4	109.1	:	:	1.7	-0.3	EUR12
B	96.3	99.1	98.7	99.2	99.5	99.5	98.6	98.3	98.4	0.6	0.1	B
DK	106.6	111.1	111.2	112.5	112.5	112.2	112.3	111.4	110.3	-0.5	-1.0	DK
D	106.8	109.6	112.8	113.3	113.5	113.7	113.8	113.5	113.6	2.2	0.1	D
GR	95.6	98.2	105.2	105.6	106.6	105.1	103.5	104.3	:	3.6	0.8	GR
E	108.0	111.2	113.9	113.7	113.4	113.7	112.7	113.8	114.8	0.7	0.9	E
F (1)	102.3	105.7	105.8	106.1	106.2	106.4	106.8	:	:	0.1	0.4	F (1)
IRL	103.8	105.3	106.4	106.8	107.2	107.4	107.6	107.5	108.0	2.5	0.5	IRL
I	108.3	112.0	114.6	115.0	115.4	115.1	114.7	115.6	116.1	1.7	0.5	I
L	104.4	104.6	103.2	102.5	102.1	102.0	101.3	100.5	100.5	-1.7	-0.0	L
NL	92.5	94.9	97.8	98.2	98.0	98.2	98.2	98.3	98.2	1.2	-0.1	NL
P	:	:	:	:	:	:	:	:	:	:	:	P
UK	97.7	97.1	103.8	103.5	103.6	102.9	102.0	102.3	103.4	1.1	-0.0	UK

(1) Schätzung - Estimation Eurostat

GESAMTE INDUSTRIE OHNE BAUINDUSTRIE
TOTAL INDUSTRY EXCLUDING CONSTRUCTION
ENSEMBLE DE L'INDUSTRIE SANS BATIMENT

NACE 1-4

1985 = 100

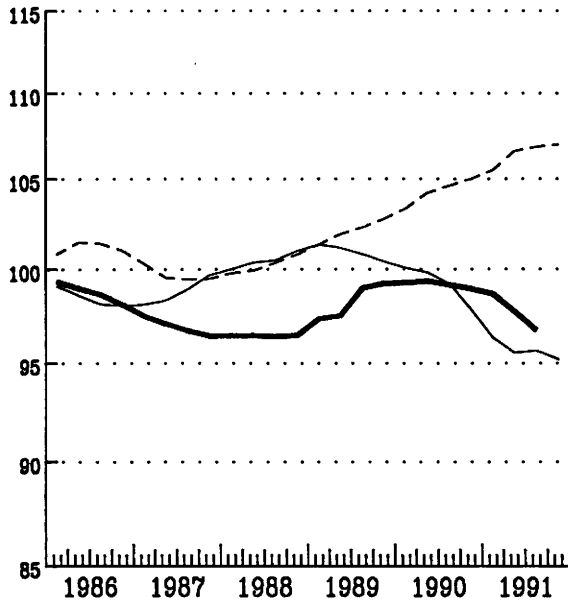
	EUR12	B	DK	D(WEST)	GR	E	F	IRL	I	L	NL	P	UK
PRODUKTIONSINDIZES													
INDICES OF PRODUCTION													
INDICES DE PRODUCTION													
1986	102.4	100.8	106.5	102.4	99.8	103.1	100.9	102.2	104.1	102.1	100.2	107.3	102.4
1987	104.4	103.0	102.8	102.7	98.1	107.8	102.8	111.2	106.8	101.2	101.1	112.0	105.7
1988	108.8	108.9	104.8	106.5	103.7	111.1	107.5	123.1	114.2	110.0	101.0	116.2	109.5
1989	112.9	112.7	107.2	112.1	105.3	116.1	112.0	137.4	118.6	118.6	105.7	124.1	109.9
1990	115.1	118.4	107.8	117.9	103.3	116.1	113.9	143.8	117.8	118.0	109.1	135.3	109.4
1991	114.8	110.5	110.2	121.2	101.3	116.0	113.4	148.7	115.4	118.6	113.2	136.1	106.1
UMSATZ													
TURNOVER													
CHIFFRE D'AFFAIRES													
Saisongereinigt													
Seasonally adjusted													
Dsaisonnalisés													
1991 01	132.6	128.5	121.1	128.9		128.1	134.2	145.4	107.1				130.8
02	129.3	123.3	118.5	128.8		122.5	136.4	140.4	103.0				130.6
03	127.1	120.4	117.2	127.4		120.4	142.2	135.9	102.9				129.3
04	131.3	123.7	120.0	131.7		126.5	140.7	141.8	109.9				128.3
05	129.3	121.3	120.2	127.9		122.6	141.3	142.0	104.9				130.3
06	130.6	119.5	117.7	131.9		121.9	147.4	138.7	108.4				131.4
07	134.9	124.5	128.6	131.5		130.5	137.2	149.7	108.3				130.7
08	126.8	116.7	119.2	128.7		123.3	144.3	137.1	107.8				128.9
09	131.5		121.3	131.1		125.4	145.4	142.3	111.6				129.1
10	134.0		131.4	129.5		128.8	144.7	148.2	114.3				128.9
11			119.1	130.8			147.1	142.3	108.5				130.3
12			124.8	129.9				144.6	107.7				128.7
1992 01			121.6	128.9									127.0
02			123.4	130.7									130.5
AUSFUHR													
EXPORTS													
EXPORTATIONS													
Mengen, Saisongereinigt													
Volumes, seasonally adjusted													
En volume, désaisonnalisés													
1991 01	101.7		125.3	122.2	151.5	133.4	131.8	145.9	110.9		130.6	184.8	122.9
02	97.0		120.6	113.3	143.9	137.0	126.6	143.2	112.3		120.7	178.9	116.6
03	93.4		118.7	107.5	121.0	127.9	123.6	143.3	103.4		125.3	169.6	110.5
04	99.8		130.9	112.4	147.2	148.2	138.1	138.3	107.5		123.4	182.9	127.6
05	98.2		124.5	113.9	140.4	133.2	129.4	144.6	103.3		126.5	186.4	120.7
06	94.6		128.4	108.8	145.3	133.0	129.2	153.6	107.2		123.3	157.6	114.2
07	104.0		132.2	120.5	176.5	132.5	140.8	144.6	105.3		134.8	181.3	125.3
08	100.3		131.7	117.0	153.7	129.3	128.5	150.0	100.0		122.9	169.8	121.8
09	99.0		130.5	112.9	130.6	134.5	139.7	152.9	101.4		121.5	166.4	115.2
10	105.7		133.2	114.8	134.5	155.6	148.1	157.8	106.9		130.6	194.7	122.9
11	102.8		133.8	117.7	136.8	139.0	136.3	155.3	100.6		126.2	174.3	115.7
EINFUHR													
IMPORTS													
IMPORTATIONS													
Mengen, Saisongereinigt													
Volumes, seasonally adjusted													
En volume, désaisonnalisés													
1991 01	165.8		125.5	179.7	128.6	250.7	158.3	136.3	140.3		138.7	276.1	124.8
02	155.8		115.3	165.0	144.0	225.9	150.2	137.5	131.9		134.0	253.3	118.3
03	149.0		105.2	160.9	117.6	214.3	145.1	136.3	115.8		130.2	255.6	116.9
04	165.8		125.3	171.8	119.9	268.9	157.1	131.8	137.6		139.2	277.3	123.2
05	158.4		117.3	175.7	115.3	234.0	145.8	145.0	133.4		136.6	256.5	119.3
06	152.6		113.3	168.1	134.0	237.5	146.5	134.0	128.3		128.8	255.0	116.5
07	169.1		126.3	183.0	114.1	262.5	164.9	147.7	137.9		145.2	290.1	120.4
08	155.1		113.6	165.6	131.2	229.1	147.3	141.3	121.3		128.1	246.5	119.9
09	160.7		118.7	169.3	124.4	246.9	156.3	141.8	132.7		133.8	262.7	119.2
10	161.9		121.4	169.7	129.0	267.4	157.0	131.9	136.3		136.6	297.9	119.8
11	160.0		123.8	168.1	199.7	260.5	149.9	130.9	128.7		129.2	256.9	117.8
ERZEUGERPREISINDIZES													
PRODUCER PRICE INDICES													
INDICE DE PRIX A LA PRODUCTION													
1991 01	112.2	92.9	109.0	102.4	208.5	113.5	108.9	113.1	121.3	96.4	89.3		121.3
02	112.2	91.9	109.0	102.3	208.7	113.3	108.8	113.5	121.5	96.0	89.2		122.0
03	112.0	91.4	109.0	102.0	210.5	112.7	108.8	113.9	121.6	95.0	89.2		121.6
04	112.6	92.1	109.0	102.9	215.9	112.8	108.5	114.2	121.5	97.2	89.2		123.1
05	112.6	92.4	110.0	103.0	219.6	113.0	108.2	114.2	121.2	97.5	89.4		123.2
06	112.5	92.6	110.0	103.1	217.6	113.0	107.9	114.2	121.3	96.7	89.6		122.8
07	113.1	92.5	110.0	104.0	225.4	113.1	108.2	114.4	121.6	96.5	89.9		123.3
08	113.2	92.8	110.0	104.0	227.4	113.2	108.6	114.3	121.6	97.1	90.1		123.2
09	113.4	93.3	111.0	104.3	229.3	113.4	109.0	114.5	121.9	96.3	90.3		123.2
10	113.7	93.4	111.0	104.4	232.2	113.6	109.1	114.8	122.2	95.9	90.0		123.7
11	113.7	93.2	111.0	104.3	231.8	113.8	109.3	114.9	122.4	95.5	90.0		123.7
12	113.5	92.1	111.0	104.1	230.8	113.6	109.4	115.1	122.2	94.7	89.8		123.5
1992 01		92.0	110.0	104.0	234.4	114.0		115.1	122.9	94.0	89.9		124.0
02		92.2	109.0	104.3		114.3		115.7	123.3	94.2	90.0		124.9
03													125.2
ABHAENIG BESCHAEFTEGTE													
NUMBER OF EMPLOYEES													
NOMBRE DE SALARIES													
Saisongereinigt													
Seasonally adjusted													
Désaisonnalisés													
1990 I	99.3	96.6	99.3	105.7	113.0		95.4	99.3	88.4	96.2			101.1
II	99.4	96.9	99.5	106.3	112.5		95.5	99.8	87.9	95.9			100.9
III	99.1	96.8	99.5	107.0	109.7		95.4	100.2	87.5	95.2			99.5
IV	99.0	96.7	99.1	107.8	107.3		95.2	100.7	87.0	94.8			98.6
1991 I	98.7	96.5	98.0	108.4	107.5		94.6	100.5	87.3	94.6			96.9
II	97.7	95.4	97.4	108.4			93.9	100.3	86.6	94.1			95.1
III	96.7		96.8	108.2			93.7	100.2	85.9	94.6			92.3
IV			96.0						85.3	95.3			86.5

INDEX DER BESCHAEFTIGUNG
NACE 1-4

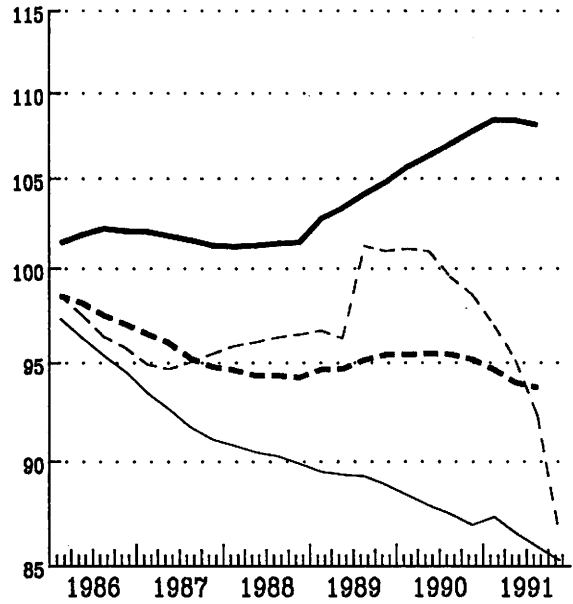
INDEX OF EMPLOYMENT
NACE 1-4

INDICE DE L'EMPLOI
NACE 1-4

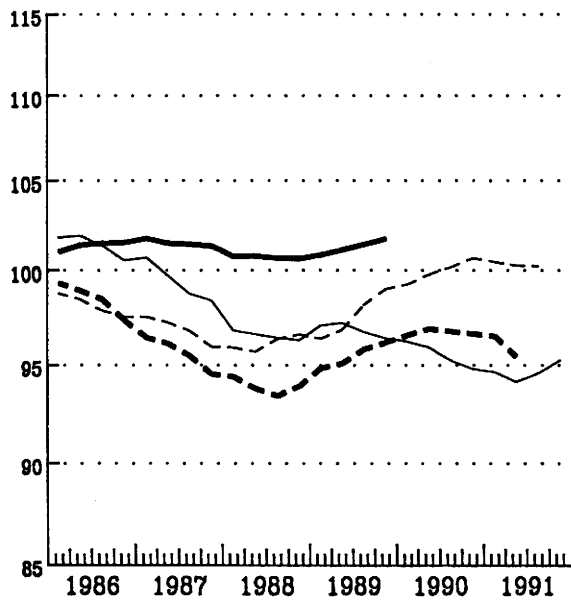
1985=100



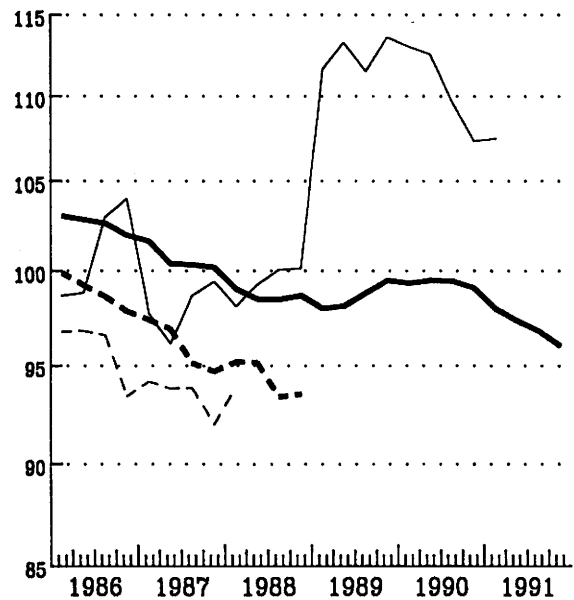
— EUR 12 - - - USA . . . Japan



— Deutschland - - - France
- - - Italia . . . United Kingdom



— Nederland - - - Belgique
- - - Luxembourg . . . Ireland



— Danmark - - - Espana
- - - Greece . . . Portugal

AUSSENHANDELSINDEX
NACE 1-4

FOREIGN TRADE INDEX
NACE 1-4

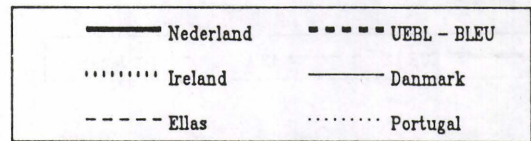
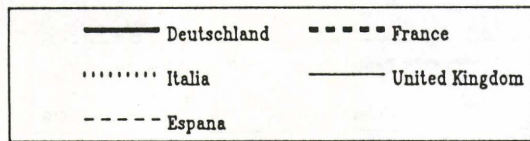
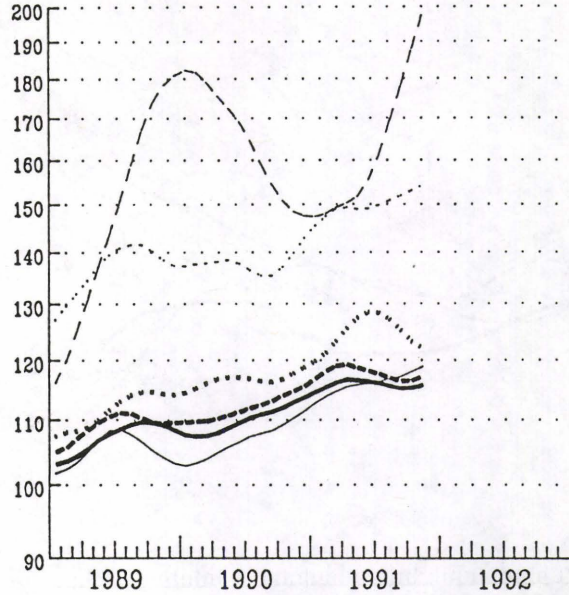
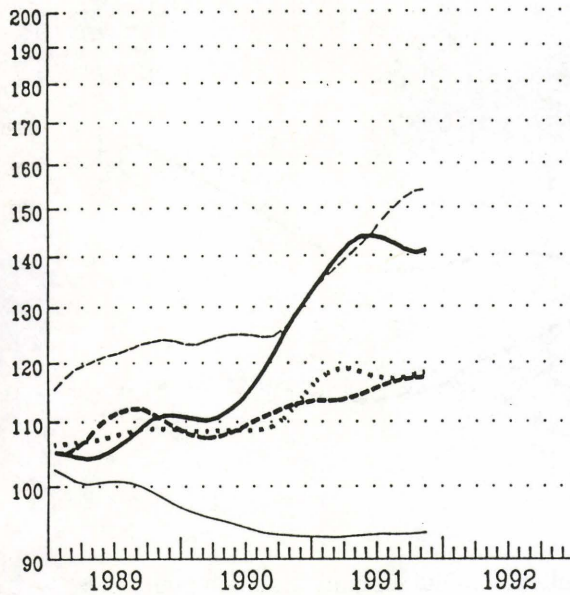
INDICE DU COMMERCE EXTERIEUR
NACE 1-4

1988=100

EINFUHR

IMPORTS

IMPORTATIONS



AUSFUHR

EXPORTS

EXPORTATIONS

