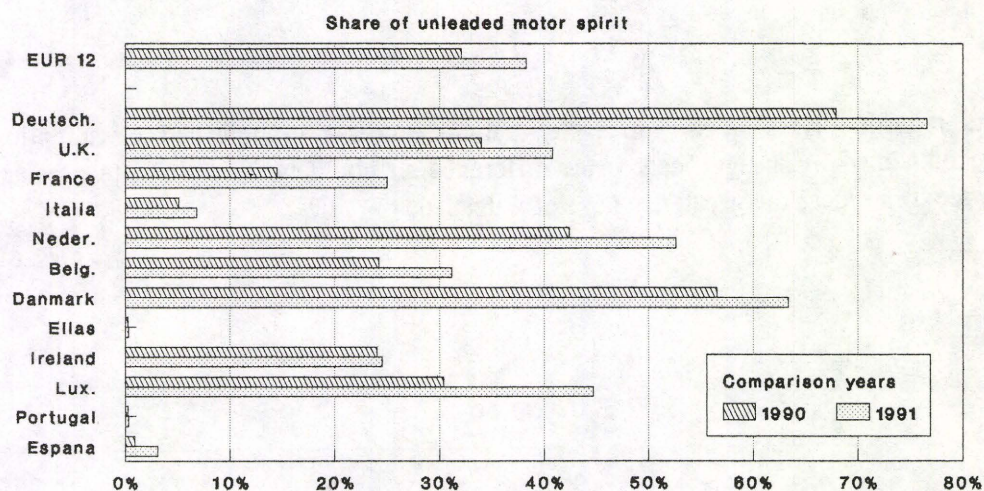


1992 □ 9

ISSN 1016-0191

Evolution of inland deliveries of unleaded motor spirit



For EUR 12, the importance of unleaded fuel has risen from 13,2% in 1988 to more than 38% in 1991. The situation in the different Member States remains dissimilar and particularly so in the south as against the north of the Twelve. Germany⁽¹⁾ and the United Kingdom represent between them 77% of unleaded deliveries. The increase in unleaded deliveries remains large (+20%) although less than last year. Motor fuel deliveries show little change (105,6 mio t) whereas derv fuels increased by 3,7% (88,2 mio t).

	Motor fuels (in 1000t)	among which: unleaded	share of unleaded
1988	101 254	13 395	13,2%
1989	102 772	23 055	22,4%
1990	104 966	33 693	32,1%
1991	105 561	40 458	38,1%
1990/89	+2,1%	+46,1%	-
1991/90	+0,6%	+20,1%	-

(1) Germany: this means West German territory before 3.10.1990 unless otherwise stated.

Manuscript completed on = 20.03.1992

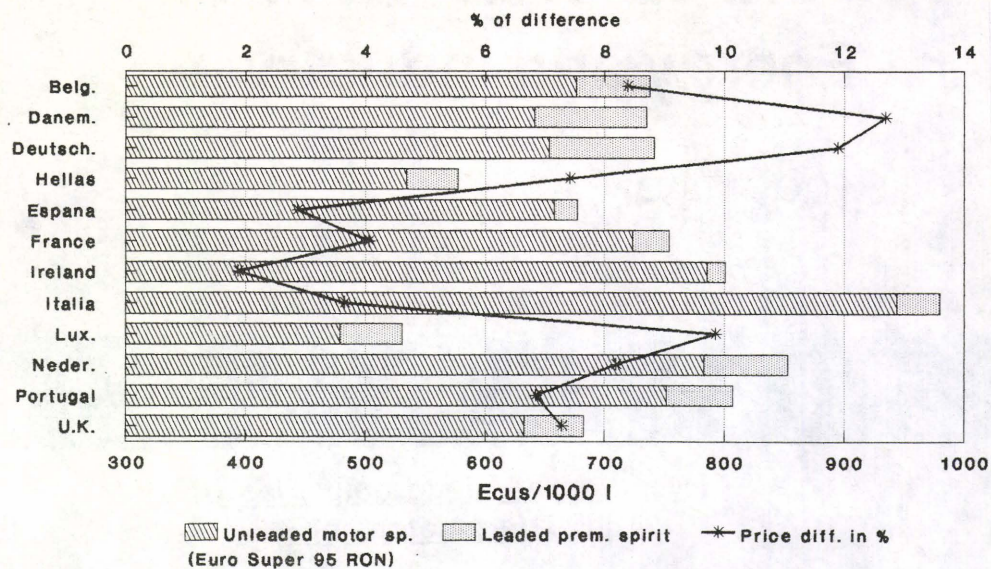
For further information please contact:
Eurostat, L-2920 Luxembourg, tel. 4301-4699 Fax: 4301 4771

Price (excl. VAT) in Luxembourg: Subscription ECU 192

Catalogue number: CA-NL-92-009-EN-C

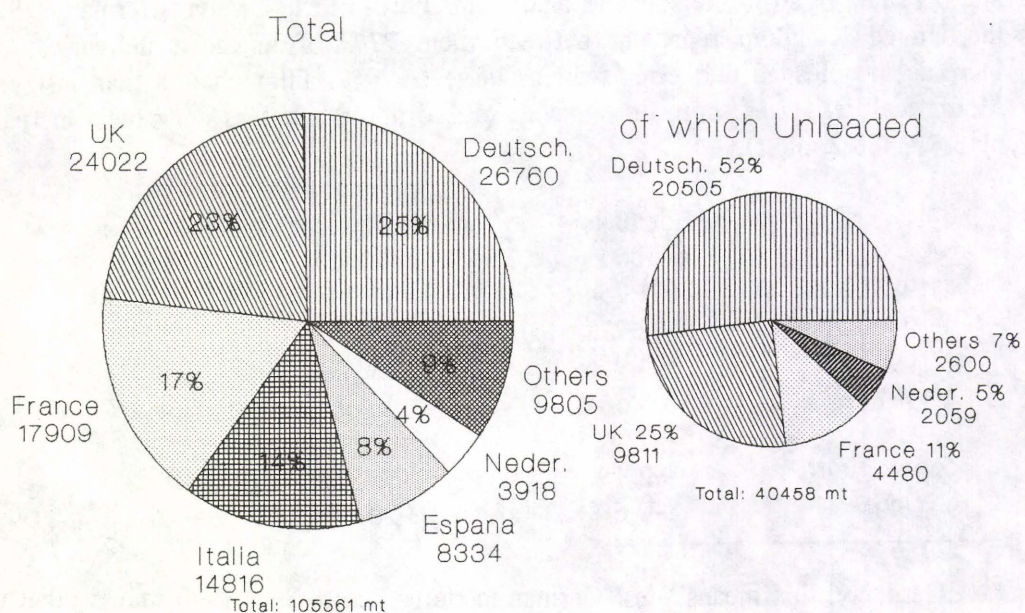
29125250

Average prices of motor spirit at 15.12.1991



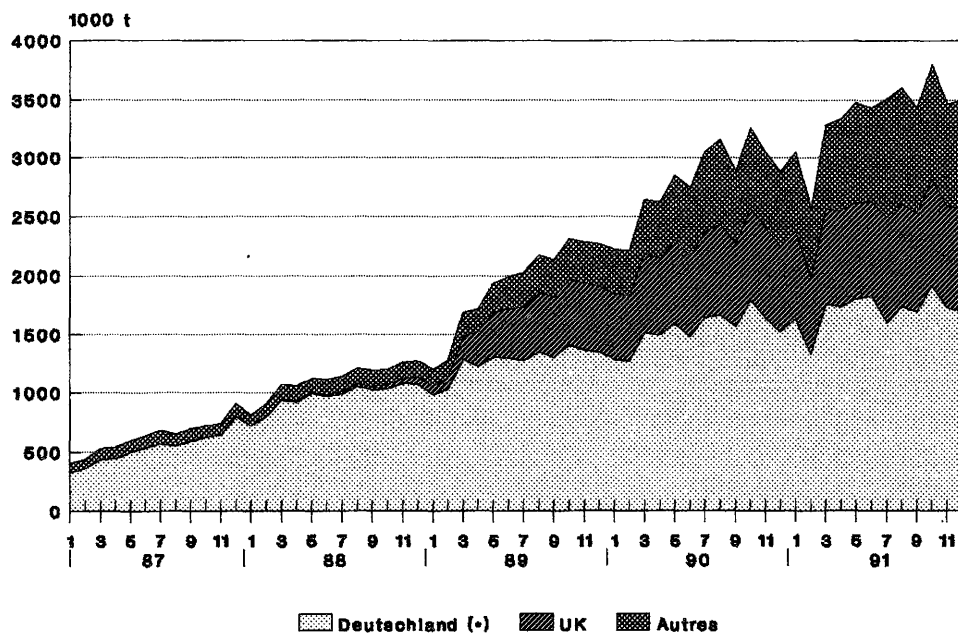
As regards prices, it is noticeable that an increase in unleaded consumption is accompanied by a significant price difference. It could be said that the greater the price difference, the greater the use of unleaded.

Motor spirit: inland deliveries Eur 12 - Year: 1991



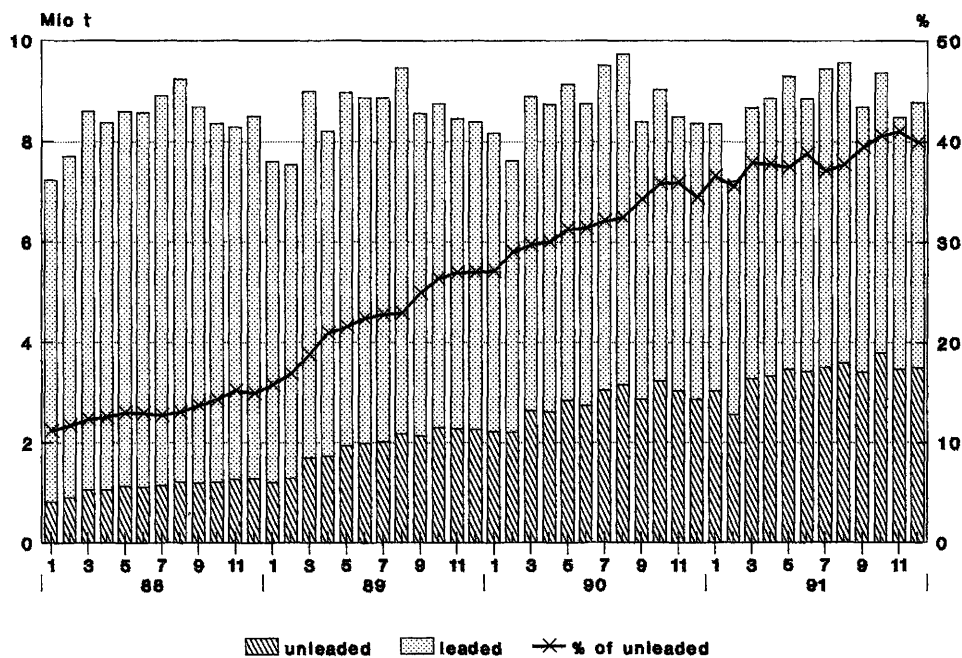
Source: Eurostat

Unleaded motor spirit Inland deliveries Eur 12



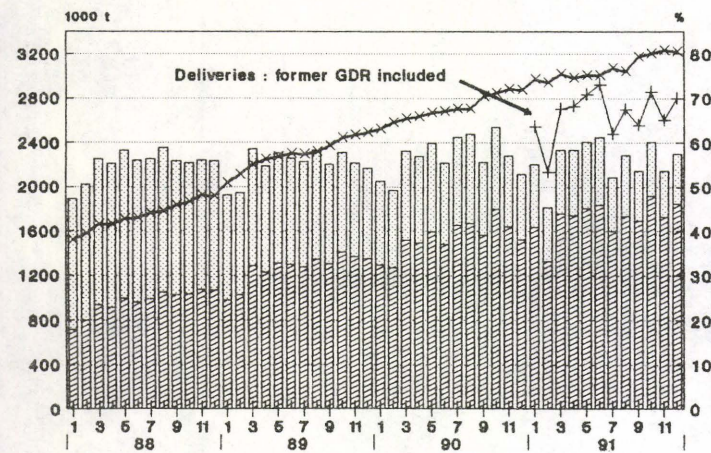
(*) Deutch. before reunification

Motor spirit: Inland deliveries Eur 12

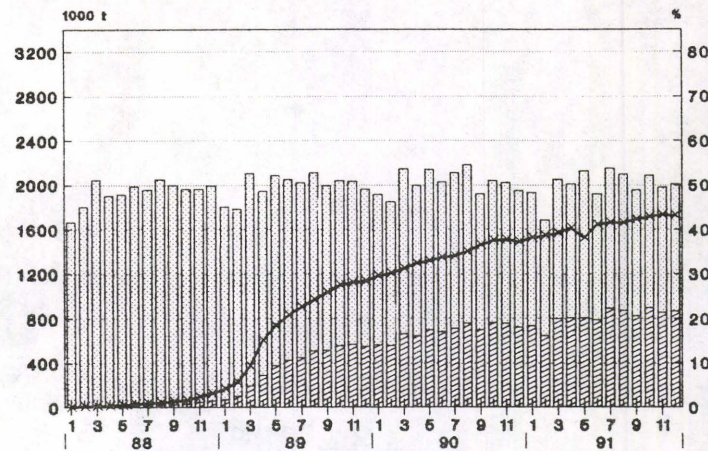


Motor spirit: inland deliveries

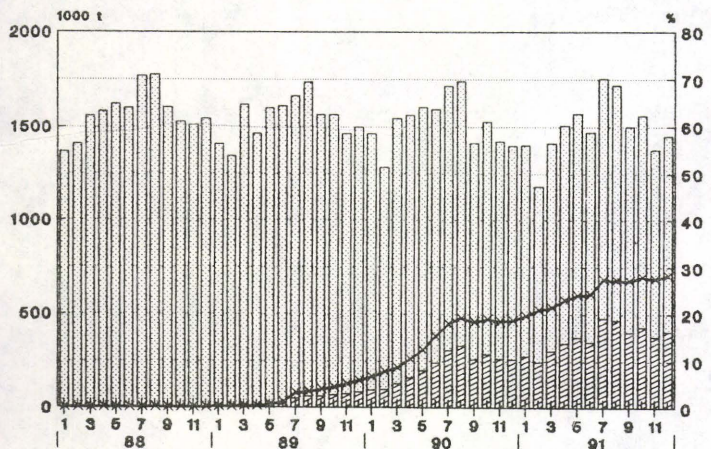
Deutschland



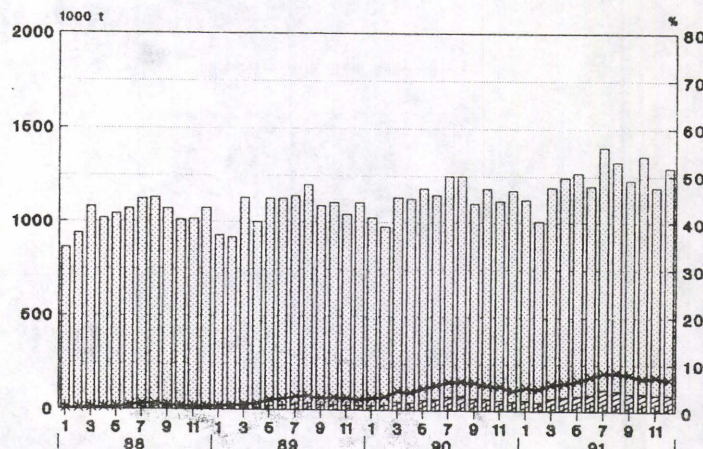
United Kingdom



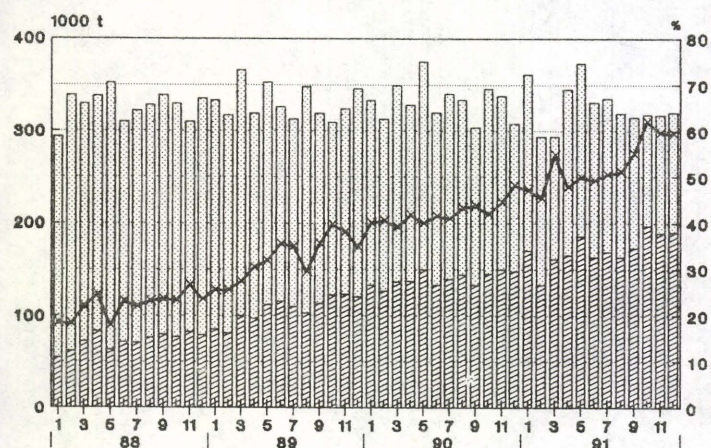
France



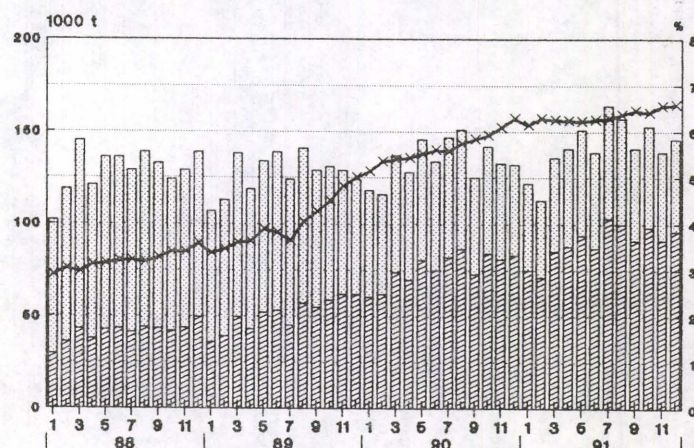
Italia



Nederland



Danmark



Unleaded
 Leaded
 % of unleaded