

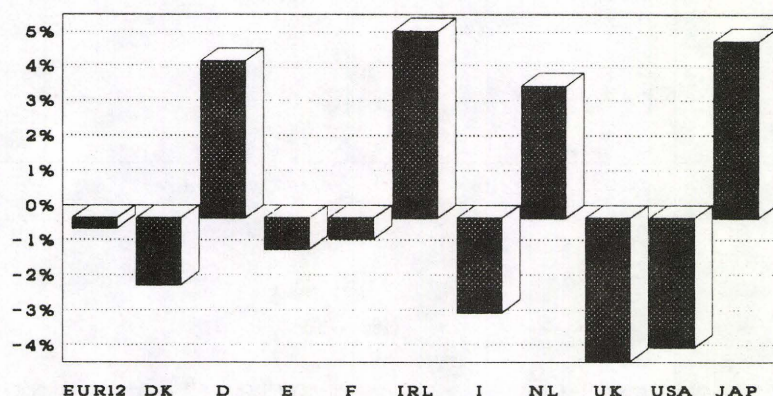
1991 □ 12

ISSN 1016-0191

Industrial Trends - June 1991

Production NACE 1-4

Change of trend in March 1991 in comparison to March 1990



Stagnation of European industrial production

In March 1991 there was still **no sign of an upturn** in industrial production in the European Community (EUR12). On the contrary, all indicators point to **continuing stagnation**. The EUR12 production index adjusted for the number of working days is currently estimated at 120.0 (1985=100) for March 1991, which is -2.0 % down on March 1990. After seasonal adjustment the estimated March index is 112.9 for the European Community, compared with 115.3 in February of this year, i.e. down -2.1 % in one month. If the seasonally adjusted production index for the first three months of 1991 is compared with the last three months of 1990, it appears that **the production level has hardly moved** (0.2%).

In the **USA** the downward trend in industrial production is much more marked, with a year-on-year decrease of 3.4 % in March 1991, while in **Japan** firm growth continues, with a year-on-year increase in the production index of 3.9 % in the same month.

Compared with the autumn months, there was still some growth in sectors such as energy and water (+3.3 %) and the food industry (+0.9 %). There was zero growth in the electrical industry (+0.4 %), the metal products industry (-0.1 %), and the chemical industry (-0.5 %), while the trend in production was downward in engineering (-1.9 %), the automobile industry (-1.8 %), the textile industry (-1.5 %) and in the clothing industry (-2.2 %).

There were **noticeable differences** in industrial growth between the **Member States**: compared with autumn 1990, the seasonally adjusted production index for industry as a whole (NACE 1-4) increased only in Greece (+2.3 %), Ireland (+2.9 %), the Netherlands (+1.4 %) and Germany (+0.8 %). There was stagnation in Italy (+0.5 %), France (+0.2 %), Denmark (-0.1 %) and Belgium (-0.3 %). The figures for the United Kingdom (-0.7 %), Spain (-1.2) and Luxembourg (-2.7 %) reflect recession.

Manuscript completed on = 10-06-1991

For further information please contact: M. B. FELDMANN
Eurostat, L-2920 Luxembourg, tel. 4301-4401 Fax: 4301 4771

Price (excl. VAT) in Luxembourg: Subscription ECU 160

Catalogue number: CA-NL-91-012-EN-C

GLEITENDE 3-MONATSDURCHSCHNITTE

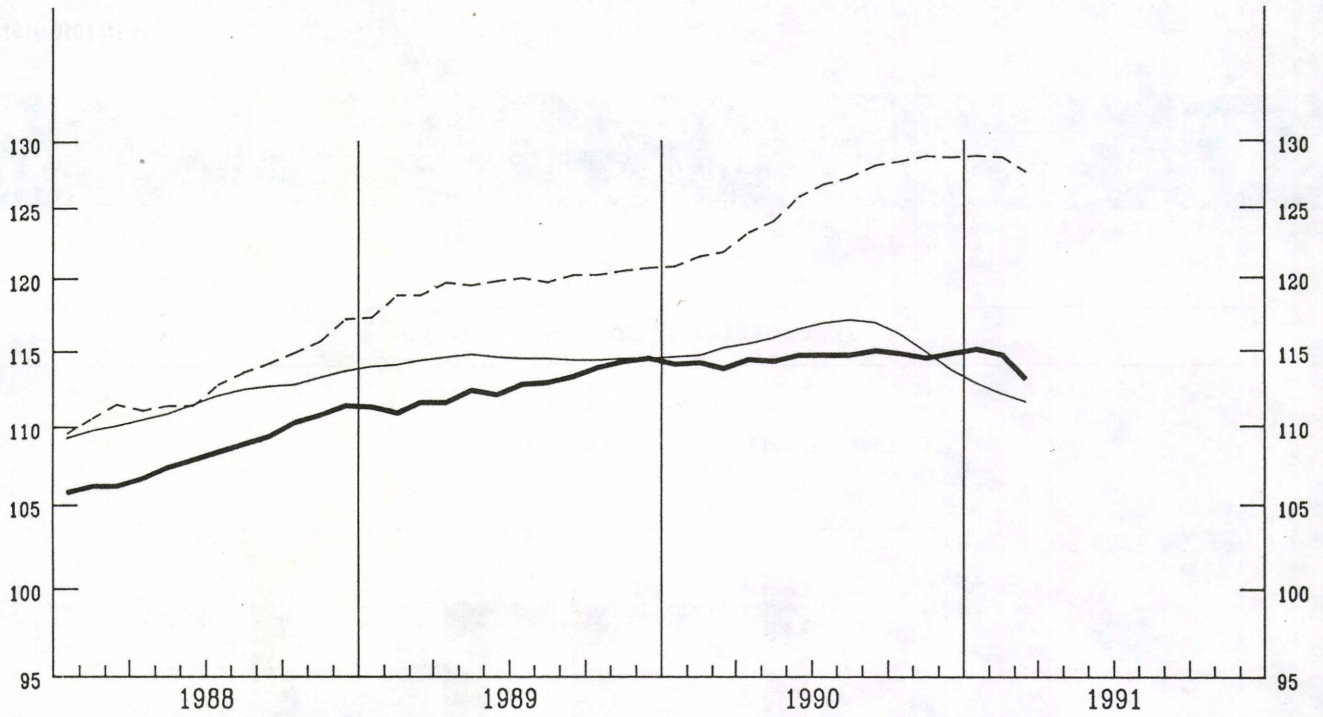
3 MONTH MOVING AVERAGE

MOYENNE MOBILE SUR 3 MOIS

NACE 1-4

1985 = 100

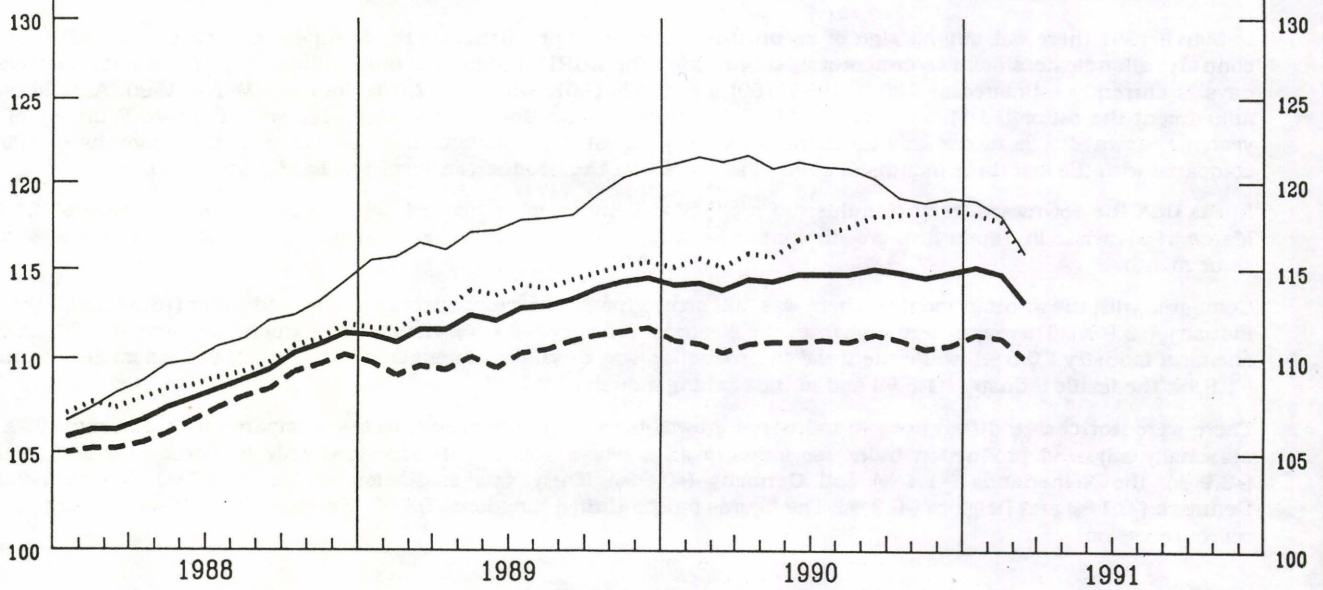
— USA — EUR 12 - - - JAPAN



EUR 12

1985 = 100

—	INDUSTRIE NACE 1-4	INDUSTRY NACE 1-4	INDUSTRIE NACE 1-4
- - -	INT ROHSTOFFE UND HALBWAREN	INTERMEDIATE GOODS	BIENS INTERMEDIAIRES
—	INV INVESTITIONSGUETER	CAPITAL GOODS	BIENS D'INVESTISSEMENT
.....	CON VERBRAUCHSGUETER	CONSUMER GOODS	BIENS DE CONSOMMATION



BASISINDIKATOREN

BASIC INDICATORS

INDICATEURS DE BASE

1985 = 100

	Letzte Zahl / Latest figure / Dernier chiffre			Veränderung / Change / Variation	
	Zeitraum Period Période	Pro Arbeitstag Per working day Par jour ouvrable	Saisonbereinigt Seasonally adjusted Désaisonnalisés	Pro Arbeitstag Per working day Par jour ouvrable ZA (1)	Saisonbereinigt Seasonally adjusted Désaisonnalisés ZA (2)

PRODUKTIONSINDEZES

INDICES OF PRODUCTION

INDICES DE PRODUCTION

NACE 1-4

GESAMTE INDUSTRIE OHNE BAUINDUSTRIE EUR12	03	91	TOTAL INDUSTRY EXCLUDING CONSTRUCTION 120.0	112.9	ENSEMBLE DE L'INDUSTRIE SANS BATIMENT 0.5	0.2
B	01	91	116.8	115.3	1.0	-0.3
DK	03	91	108.9	104.0	-2.8	-0.1
D	03	91	127.9	121.1	4.8	0.8
GR	01	91	94.6	101.1	-2.2	2.3
E	03	91	112.8	106.6	-3.7	-1.2
F	03	91	115.3	109.8	0.6	0.2
IRL	02	91	149.1	151.0	5.4	2.2
I	03	91	124.7	116.5	-1.3	0.5
L	01	91	112.2	113.3	-1.6	-2.7
NL	03	91	113.0	107.8	7.2	1.4
P	12	90	138.8	138.5	8.7	1.4
UK	03	91	114.4	107.1	-3.3	-0.8
USA	03	91	111.1	111.5	-2.4	-2.4
J	03	91	137.3	127.3	5.9	-0.1

INT

GRUNDSTOFFE U. PROD. GUETER EUR12	03	91	INTERMEDIATE GOODS 116.6	109.3	0.4	BIENS INTERMEDIAIRES 0.6
B	01	91	118.3	116.6	1.7	0.3
DK	03	91	109.2	106.6	-3.9	0.4
D	03	91	122.0	114.9	1.9	0.1
GR	01	91	101.9	101.0	-4.0	-1.5
E	03	91	108.6	103.4	-2.2	0.3
F	03	91	115.6	108.5	3.0	1.2
IRL	02	91	144.1	145.9	4.8	2.7
I	03	91	122.4	115.2	-2.0	0.8
L	01	91	112.3	111.9	-2.2	-2.1
NL	03	91	109.0	98.3	10.1	2.4
P	12	90	126.1	124.7	4.8	2.6
UK	03	91	109.1	102.0	-1.8	0.7
USA	03	91	111.8	114.7	-5.5	-3.6
J	03	91	134.3	128.6	6.5	0.1

INV

INVESTITIONSGUETER EUR12	03	91	CAPITAL GOODS INDUSTRIES 124.7	116.4	-2.7	BIENS D'INVESTISSEMENT -0.7
B	01	91	117.1	113.5	-1.3	-3.8
DK	03	91	111.0	102.9	-4.2	0.2
D	03	91	132.0	125.7	4.1	1.1
GR	01	91	91.0	104.6	-3.0	0.3
E	03	91	118.5	115.7	-14.2	-8.8
F	03	91	108.3	106.3	-6.1	-2.0
IRL	02	91	218.0	208.5	5.7	3.4
I	03	91	129.1	121.5	-4.1	0.7
L	01	91	92.4	108.3	-3.1	-7.9
NL	03	91	116.7	116.5	2.1	1.4
P	12	90	122.3	116.8	2.4	0.5
UK	03	91	131.0	116.5	-5.5	-2.2
USA	03	91	118.3	118.9	-0.4	-2.2
J	03	91	163.0	135.7	5.7	-0.6

CON

VERBRAUCHSGUETER EUR12	03	91	CONSUMER GOODS 121.8	116.1	1.7	BIENS DE CONSOMMATION -0.4
B	01	91	116.8	116.2	2.0	0.9
DK	03	91	107.9	103.9	0.0	0.4
D	03	91	132.2	125.1	9.8	1.4
GR	01	91	84.7	101.2	1.2	9.6
E	03	91	117.1	109.1	-2.8	-0.6
F	03	91	119.0	114.5	-0.2	-0.6
IRL	02	91	117.0	126.5	4.9	0.8
I	03	91	126.8	116.2	1.9	-0.2
L	01	91	127.6	127.6	3.0	-0.5
NL	03	91	119.0	121.7	4.5	-0.7
P	12	90	126.5	133.3	5.2	-0.5
UK	03	91	113.2	111.4	-4.7	-2.5
USA	03	91	110.5	112.0	-1.9	-1.8
J	03	91	128.6	120.2	6.2	-1.0

UMSATZ

TURNOVER

CHIFFRE D'AFFAIRES

NACE 1-4

GESAMTE INDUSTRIE OHNE BAUINDUSTRIE EUR12	10	90	TOTAL INDUSTRY EXCLUDING CONSTRUCTION 140.8	132.8	ENSEMBLE DE L'INDUSTRIE SANS BATIMENT 7.2	1.0
--	----	----	--	-------	--	-----

ABHAENGIGE BESHCAEFTIGTE

NUMBER OF EMPLOYEES

NOMBRE DE SALARIÉS

NACE 1-4

GESAMTE INDUSTRIE OHNE BAUINDUSTRIE EUR12	III	90	TOTAL INDUSTRY EXCLUDING CONSTRUCTION 97.9	97.5	ENSEMBLE DE L'INDUSTRIE SANS BATIMENT 0.5	0.0
--	-----	----	---	------	--	-----

Z B(1) - Letzte 3 Monate gegenüber dem entsprechenden Vorjahreszeitraum
- Last 3 months compared with corresponding months of previous year
- Les 3 derniers mois par rapport aux mois correspondants de l'année précédente

Z A(2) - Letzte 3 Monate gegenüber den vorhergehenden 3 Monaten
- Last 3 months compared with previous 3 months
- Les 3 derniers mois par rapport aux 3 mois précédents

PRODUKTIONSINDIZES - SAISONBEREINIGT
INDICES OF PRODUCTION - SEASONALLY ADJUSTED
INDICES DE PRODUCTION - DÉSAISONNALISÉS

1985 = 100

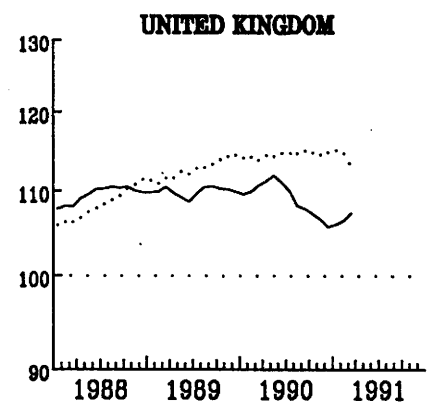
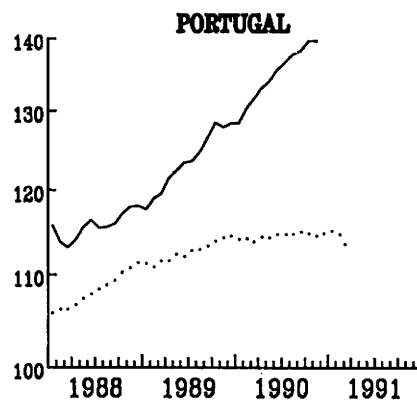
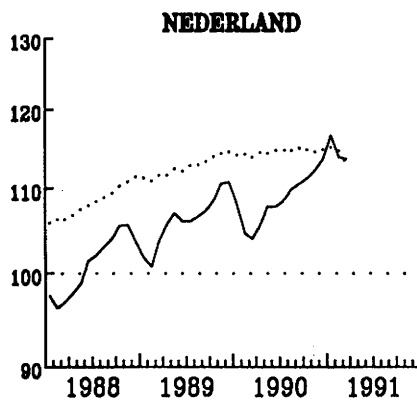
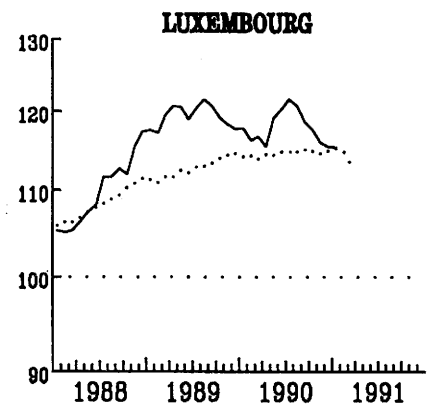
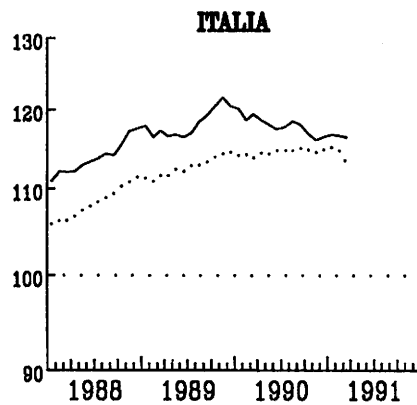
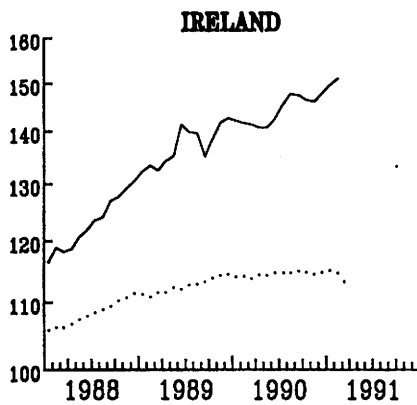
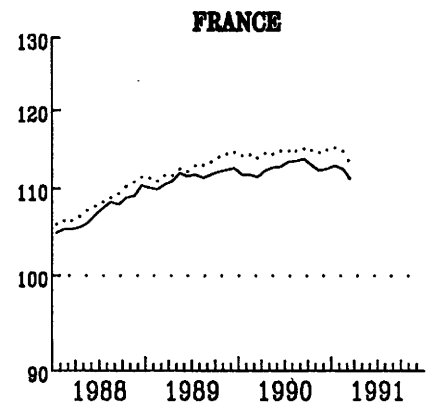
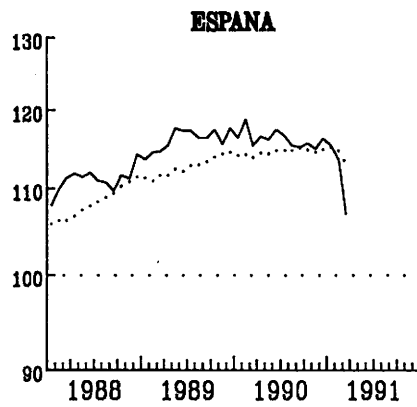
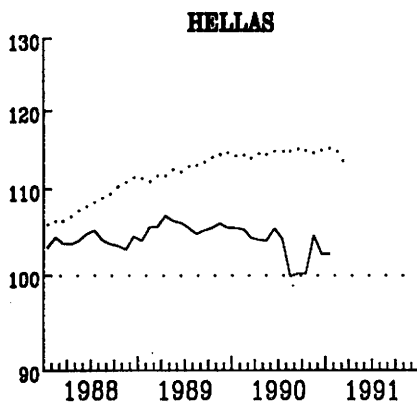
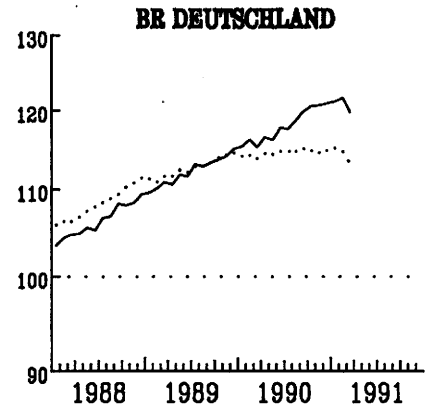
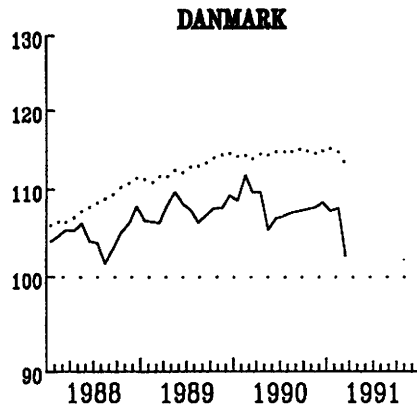
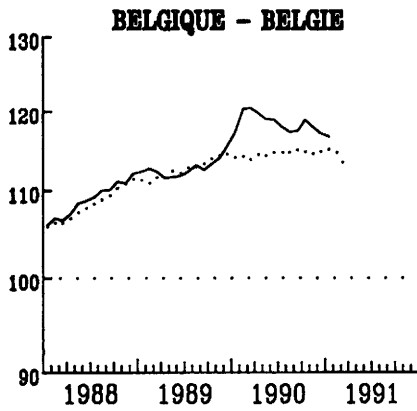
	1988	1989	1990	1990				1991			
				09	10	11	12	01	02	03	
NACE 1-4 GESAMTE INDUSTRIE OHNE BAUINDUSTRIE				TOTAL INDUSTRY EXCLUDING CONSTRUCTION				ENSEMBLE DE L'INDUSTRIE SANS BATIMENT			
EUR12	108.9	113.0	114.9	114.9	115.0	114.4	114.1	115.8	115.3	112.9	EUR12
B	108.9	112.7	118.4	120.2	117.5	119.2	116.9	115.3	:	:	B
DK	104.8	107.2	107.8	102.7	109.5	110.9	103.3	111.5	107.8	104.0	DK
D	106.5	112.1	117.9	119.3	121.8	120.6	119.8	122.7	121.1	121.1	D
GR	103.7	105.3	103.3	90.7	107.3	102.7	103.5	101.1	:	:	GR
E	111.1	116.1	116.1	114.5	114.7	117.6	112.3	118.7	115.1	106.6	E
F	107.5	111.9	113.4	112.8	113.6	112.1	111.0	114.2	113.2	109.8	F
IRL	123.1	137.4	143.8	150.4	143.6	145.4	149.2	149.0	151.0	:	IRL
I	114.2	118.6	117.7	119.6	115.9	114.9	117.0	117.2	115.9	116.5	I
L	110.0	118.6	118.0	121.9	114.8	115.8	116.8	113.3	:	:	L
NL	101.3	106.4	109.2	113.6	109.4	110.7	116.4	113.7	119.9	107.8	NL
P	116.2	124.1	135.4	138.7	140.3	140.2	138.5	:	:	:	P
UK	109.6	109.9	109.1	107.7	107.8	106.0	105.7	105.2	106.9	107.1	UK
USA	111.7	114.5	115.7	117.2	116.4	114.7	113.6	112.9	112.0	111.5	USA
J	112.8	119.7	125.4	126.4	130.0	128.7	127.8	129.5	129.2	127.3	J
INT GRUNDSTOFFE U. PROD. GUETER				INTERMEDIATE GOODS				BIENS INTERMEDIAIRES			
EUR12	108.1	111.0	111.6	111.4	111.0	110.6	109.9	111.7	112.4	109.3	EUR12
INV INVESTITIONSGUETER				CAPITAL GOODS INDUSTRIES				BIENS D'INVESTISSEMENT			
EUR12	111.6	118.9	121.7	120.2	119.2	117.9	119.3	120.0	117.5	116.4	EUR12
CON VERBRAUCHSGUETER				CONSUMER GOODS				BIENS DE CONSOMMATION			
EUR12	109.1	113.0	116.1	117.2	119.0	118.2	117.4	119.8	117.2	116.1	EUR12

INDUSTRIELLE PRODUKTION
GLEITENDE 3-MONATSDURCHSCHNITTE

INDUSTRIAL PRODUCTION
3 MONTH MOVING AVERAGE

PRODUCTION INDUSTRIELLE
MOYENNE MOBILE SUR 3 MOIS

NACE 1-4 1985=100



..... EUR 12

KINFACH-LOGARITHMISCHE SKALA

SEMI-LOGARITHMIC SCALE

ECHELLE SEMI-LOGARITHMIQUE

PRODUKTIONSINDIZES - PRO ARBEITSTAG
INDICES OF PRODUCTION - PER WORKING DAY
INDICES DE PRODUCTION - PAR JOUR OUVRABLE

1985 = 100

	1988	1989	1990	1989			1990			
				12	01	02	12	01	02	

NACE 1-4

GESAMTE INDUSTRIE OHNE BAUINDUSTRIE

TOTAL INDUSTRY EXCLUDING CONSTRUCTION

ENSEMBLE DE L'INDUSTRIE SANS BATIMENT

EUR12	108.9	113.0	114.7	113.5	114.0	117.2	112.7	115.2	118.7	EUR12
B	108.9	112.7	117.3	107.6	119.4	122.7	:	:	:	B
DK	104.8	107.2	107.8	104.9	103.9	103.9	101.9	106.9	102.9	DK
D	106.5	112.1	117.9	113.9	111.1	111.9	118.9	118.0	117.9	D
GR	103.7	105.3	102.9	103.4	98.2	105.4	:	:	:	GR
E	111.1	116.1	116.0	108.0	122.4	115.2	107.1	121.8	:	E
F	107.5	111.9	113.4	112.0	118.3	116.6	111.2	119.7	119.4	F
IRL	123.1	137.4	143.8	144.5	133.2	139.8	148.4	142.5	:	IRL
I	114.2	118.6	117.7	119.9	115.3	128.0	113.8	116.5	124.5	I
L	110.0	118.6	118.0	114.4	115.2	120.5	114.5	:	:	L
NL	101.3	106.4	109.2	125.0	121.0	114.0	130.0	125.0	133.0	NL
P	114.9	120.9	126.3	124.4	126.5	128.9	:	:	:	P
UK	109.6	110.0	109.2	108.7	107.0	116.6	104.0	102.7	113.4	UK
USA	111.7	114.5	115.7	113.1	112.3	115.5	111.5	111.1	112.4	USA
J	112.8	119.7	125.4	125.0	111.0	117.4	132.3	119.0	126.0	J

INT
GRUNDSTOFFE U. PROD. GUETER

INTERMEDIATE GOODS

BIENS INTERMEDIAIRES

EUR12	108.1	111.0	111.5	109.0	115.8	115.9	107.2	115.8	118.1	EUR12
-------	-------	-------	-------	-------	-------	-------	-------	-------	-------	-------

INV
INVESTITIONSGUETER

CAPITAL GOODS INDUSTRIES

BIENS D'INVESTISSEMENT

EUR12	111.6	118.9	121.7	128.8	111.3	121.5	126.3	110.4	117.5	EUR12
-------	-------	-------	-------	-------	-------	-------	-------	-------	-------	-------

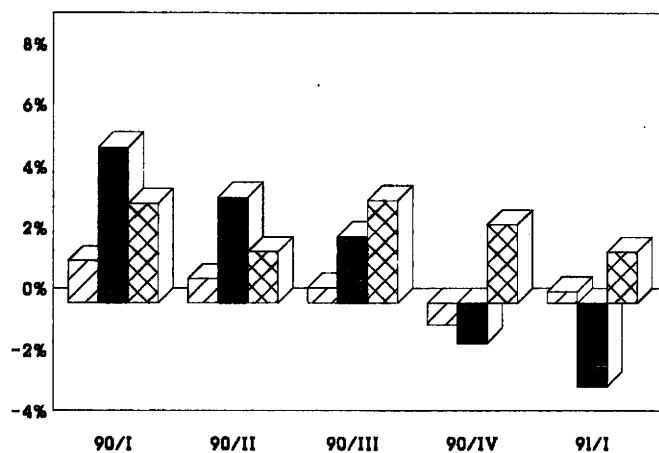
CON
VERBRAUCHSGUETER

CONSUMER GOODS

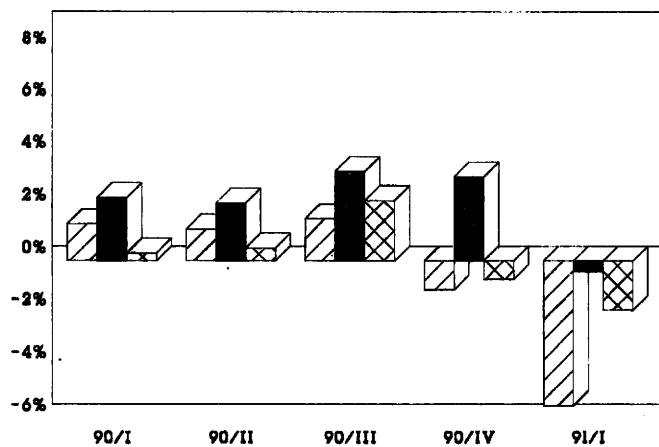
BIENS DE CONSOMMATION

EUR12	109.1	113.0	116.0	109.4	112.2	116.4	110.5	116.3	118.0	EUR12
-------	-------	-------	-------	-------	-------	-------	-------	-------	-------	-------

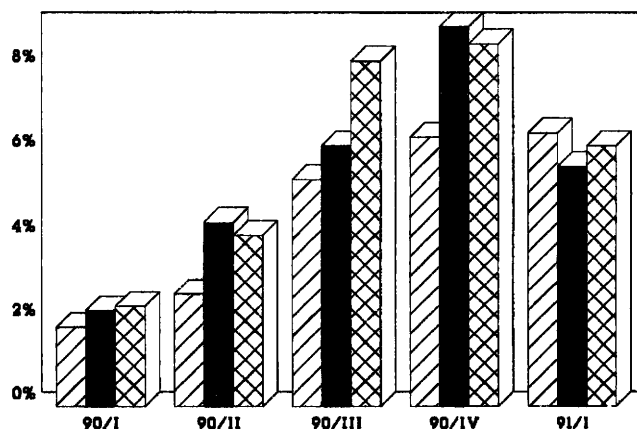
EUR-12



USA



JAPAN



	Grundstoffe und Produktionsgüter	Intermediate goods	Biens intermédiaires
	Investitionsgüter	Capital goods	Biens d'investissement
	Verbrauchsgüter	Consumption goods	Biens de consommation

ERZEUGERPREISINDEX

PRODUCER PRICE INDEX

INDICE DES PRIX A LA PRODUCTION

EUR 12 - 1985 = 100

IN LANDESWAEHRUNG

- Industrie NACE 1-4
- Rohstoffe und Halbwaren
- - - Investitionsgueter
- Verbrauchsgueter

IN ECU

- - - Industrie NACE 1-4

IN NATIONAL CURRENCY

- Industry NACE 1-4
- Intermediate Goods
- Capital Goods
- Consumer Goods

IN ECU

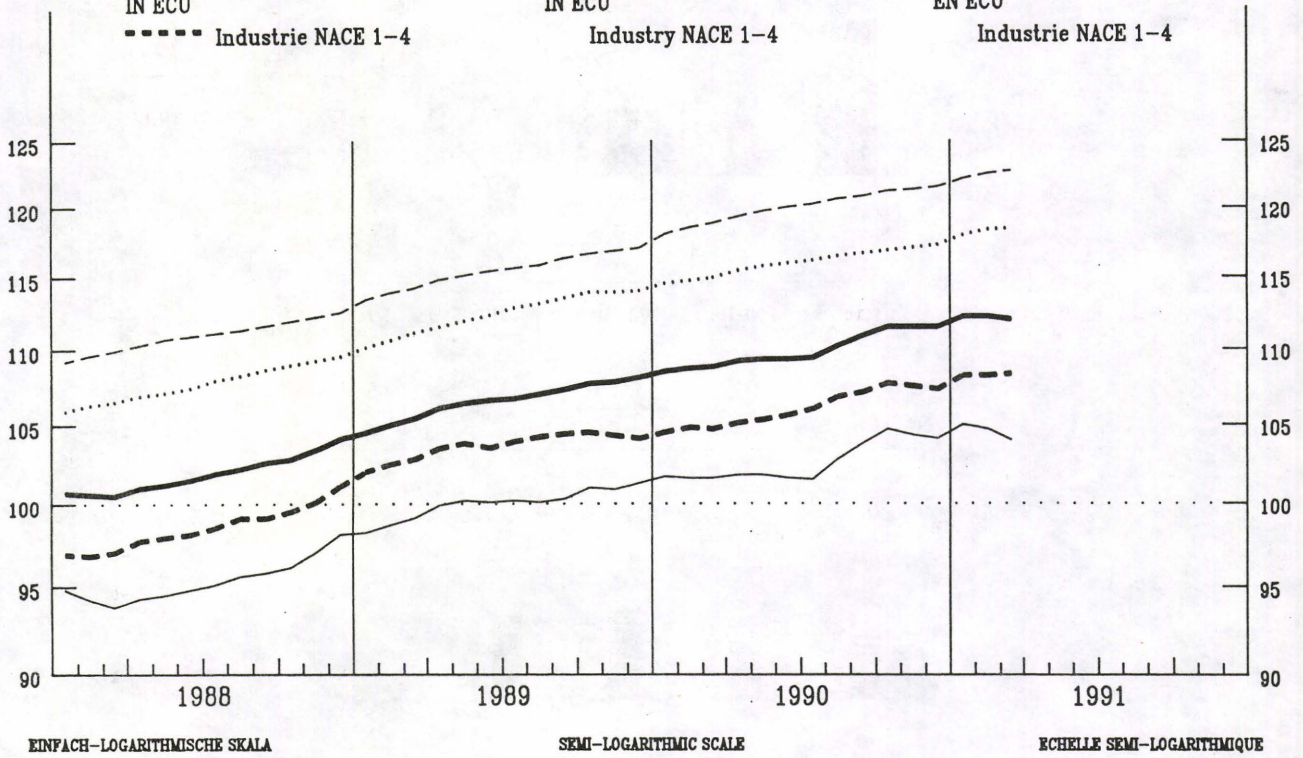
- - - Industry NACE 1-4

EN MONNAIE NATIONALE

- Industrie NACE 1-4
- Biens Intermediaires
- Biens d'Investissement
- Biens de Consommation

EN ECU

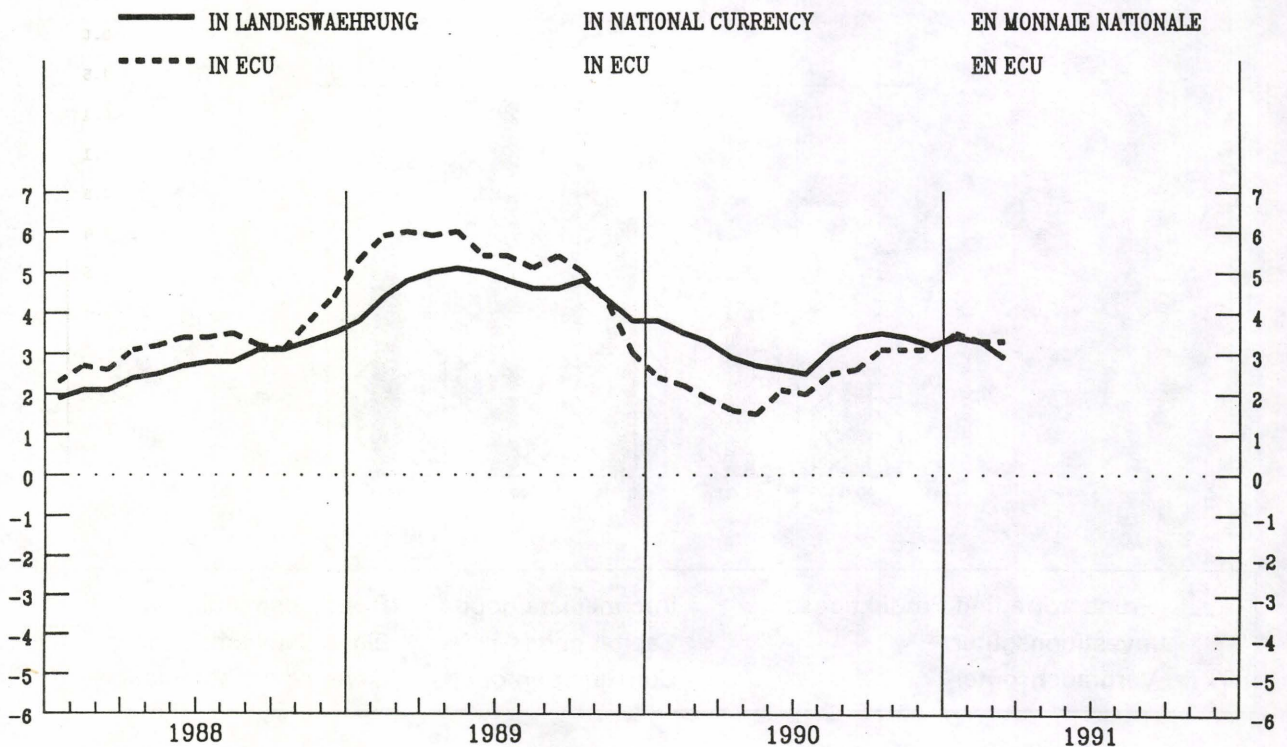
- - - Industrie NACE 1-4



VERAENDERUNG % T/T-12

VARIATION % T/T-12

VARIATION % T/T-12



GESAMTE INDUSTRIE OHNE BAUINDUSTRIE
TOTAL INDUSTRY EXCLUDING CONSTRUCTION
ENSEMBLE DE L'INDUSTRIE SANS BATIMENT
NACE 1-4
PREISINDIZES - PRICE INDICES - INDICES DE PRIX

1985 = 100

	1989	1990	1990				1991				Letzte Zahl Latest figure Dernier chiffre		
			09	10	11	12	01	02	03	%	%		
												T/T-12	
IN LANDESWAHRUNG			IN NATIONAL CURRENCY								EXPRIMES EN MONNAIE NATIONALE		
EUR12	106.5	109.9	110.9	111.5	111.5	111.5	112.2	112.2	110.7	1.8	-1.3	EUR12	
B	93.0	93.6	95.5	95.3	94.2	93.4	92.9	91.8	91.4	-2.1	-0.5	B	
DK	107.0	108.8	110.0	109.0	109.0	109.0	109.0	109.0	109.0	0.9	:	DK	
D	99.3	101.0	101.7	102.1	101.8	101.5	102.4	102.3	102.0	1.8	-0.3	D	
GR	163.3	189.0	197.7	201.0	203.8	204.6	208.5	208.7	:	18.6	0.1	GR	
E	109.2	111.5	112.1	112.9	112.7	112.8	113.5	113.2	112.7	1.6	-0.5	E	
F (1)	105.8	108.0	108.6	108.9	109.2	109.4	109.1	108.8	108.5	1.2	-0.3	F (1)	
IRL	112.7	113.0	113.1	113.1	113.2	113.2	113.1	113.5	113.9	0.9	0.4	IRL	
I	113.1	117.8	118.8	119.6	119.7	119.9	121.3	121.5	121.6	4.2	0.1	I	
L	100.8	98.8	98.0	97.4	96.6	96.4	96.4	96.0	:	-3.9	-0.5	L	
NL	86.0	87.3	87.8	88.2	87.7	87.2	89.2	89.2	89.1	2.2	-0.1	NL	
P	:	:	:	:	:	:	:	:	:	:	:	P	
UK	111.6	117.6	119.2	120.3	120.6	120.6	121.4	122.0	121.6	5.4	1.1	UK	
IN ECU			IN ECU								EXPRIMES EN ECU		
EUR12	103.6	106.0	107.1	107.7	107.5	107.3	108.2	108.2	108.3	3.4	0.1	EUR12	
B	96.3	99.1	101.2	100.8	99.9	99.2	98.9	97.8	97.1	-1.9	-0.7	B	
DK	106.6	111.1	112.1	111.1	111.1	111.0	110.8	110.9	110.9	0.1	0.0	DK	
D	106.8	109.6	109.9	110.3	110.4	110.6	111.3	111.2	110.7	1.3	-0.5	D	
GR	95.6	98.2	102.2	101.8	101.5	100.8	100.7	99.6	:	4.0	-1.1	GR	
E	108.0	111.2	111.9	112.6	111.9	111.5	113.3	114.0	113.9	4.3	-0.1	E	
F (1)	102.4	106.1	106.9	107.2	107.3	107.2	106.5	106.1	105.6	-0.2	-0.5	F (1)	
IRL	103.8	105.3	105.3	105.2	105.6	105.6	105.3	105.4	105.8	0.4	0.4	IRL	
I	108.3	112.0	111.6	112.0	112.2	112.6	113.9	114.2	114.9	2.4	0.5	I	
L	104.4	104.6	103.8	103.1	102.5	102.5	102.6	102.2	:	-2.8	-0.4	L	
NL	92.5	94.9	94.9	95.3	95.1	95.0	97.0	97.0	96.7	1.5	-0.3	NL	
P	:	:	:	:	:	:	:	:	:	:	:	P	
UK	97.7	97.1	100.5	101.9	101.0	100.2	101.8	102.0	102.3	12.7	2.2	UK	

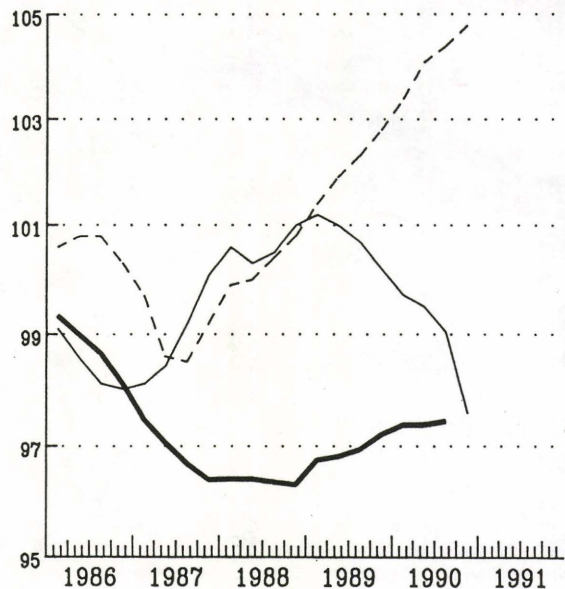
(1) Schätzung - Estimation Eurostat

**INDEX DER BESCHAEFTIGUNG
NACE 1-4**

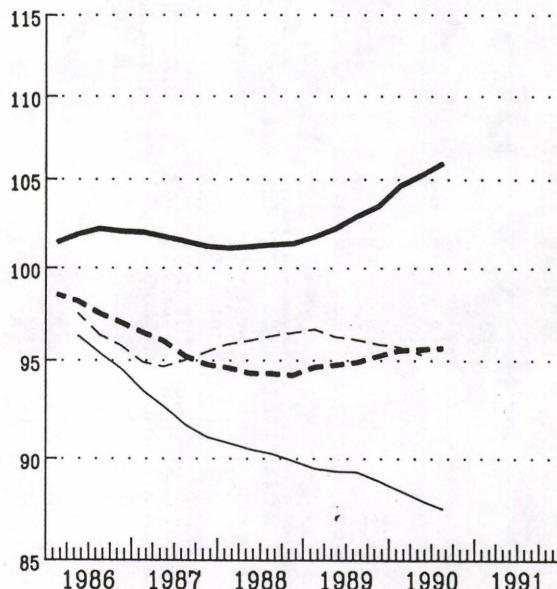
**INDEX OF EMPLOYMENT
NACE 1-4**

**INDICE DE L'EMPLOI
NACE 1-4**

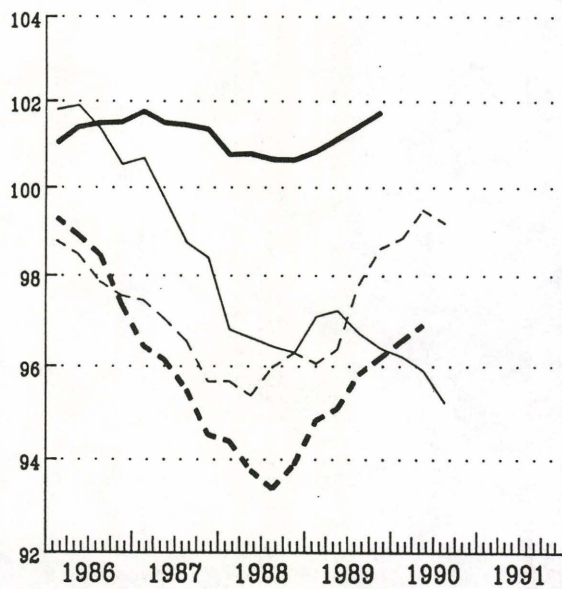
1985=100



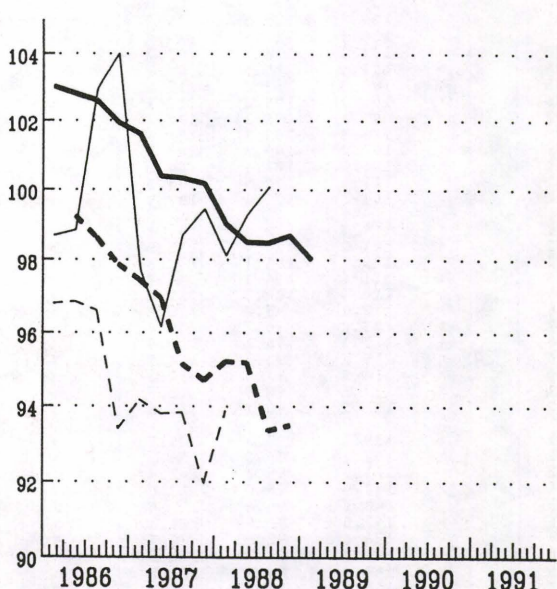
— EUR 12 — USA - - - Japan



— Deutschland - - - France
— Italia - - - United Kingdom



— Nederland - - - Belgique
— Luxembourg - - - Ireland



— Danmark - - - Espana
— Greece - - - Portugal