

Trends in distributive trades

Retail sales – Registration of cars

Conjoncture dans le commerce

Ventes du commerce de détail – Immatriculation des voitures

1-2 1988 Monthly Mensuel

3 mars 1988

Good results for the European retail trade in November 1987

The index of the gross volume of retail trade for November 1987 showed a significant rise over that for November 1986 in four Member States: in Greece (+ 12.7%), in the Grand Duchy of Luxembourg (+ 5.5%), in the FR of Germany (+ 5.2%) and in the United Kingdom (+5.1%). In Belgium, sales were 1.5% higher than in the corresponding month in 1986. They remained static in France and fell in the Netherlands, in Denmark and in Ireland by 0.7%, 1.7% and 2.1% respectively.

During the first 11 months of 1987 and in comparison with the same period in the previous year, sales volume increases of 5.7%, 5%, 4.6%, 2.7% and 2.1% were recorded for the United Kingdom, Greece, Grand Duchy of Luxembourg, Netherlands and FR of Germany respectively. Drops of 2.3%, 1.0% and 0.2% apply to Denmark, Ireland, Belgium and France.

Over the first 11 months of 1987 the index of sales volume for the 9 Member States in question is around 100.6, a rise of 2.1% compared with the same 11 months in 1986.

Bons résultats du commerce de détail européen en novembre 1987

Comparé à l'indice brut du volume des ventes du commerce de détail du mois de novembre 1986, celui du même mois de l'année 1987 augmente de façon très significative dans quatre Etats membres: en Grèce (+ 12.7%), au Grand Duché de Luxembourg (+ 5.5%), en R.F. d'Allemagne (+ 5.2%) et au Royaume-Uni (+ 5.1%). En Belgique les ventes au détail dépassent de 1.5% le niveau qu'elles avaient atteint en novembre 1986. Pour la France on note un statu quo alors qu'aux Pays-Bas, au Danemark et en Irlande une régression de respectivement 0.7%, 1.7% et 2.1% est enregistrée.

Durant les 11 premiers mois de 1987 et comparé à la même période de l'année précédente des augmentations du volume des ventes de 5.7%, 5%, 4.6%, 2.7% et 2.1% sont intervenues respectivement au Royaume-Uni, en Grèce, au Grand Duché de Luxembourg, aux Pays-Bas et en R.F. d'Allemagne. Des baisses de 2.3%, 1.5%, 1.0% et 0.2% sont notées au Danemark, en Belgique et en France.

Pour les 11 premiers mois de 1987 l'indice du volume des ventes pour les neuf Etats membres qui font l'objet de données, se situe aux alentours de 100.6 et est donc en augmentation de 2.1% par rapport aux premiers 11 mois de 1986.



OFICINA ESTADÍSTICA DE LAS COMUNIDADES EUROPEAS
DE EUROPÆISKE FÆLLESSKABERS STATISTISKE KONTOR
STATISTISCHES AMT DER EUROPÄISCHEN GEMEINSCHAFTEN
ΣΤΑΤΙΣΤΙΚΗ ΥΠΗΡΕΣΙΑ ΤΩΝ ΕΥΡΩΠΑΪΚΩΝ ΚΟΙΝΟΤΗΤΩΝ
STATISTICAL OFFICE OF THE EUROPEAN COMMUNITIES
OFFICE STATISTIQUE DES COMMUNAUTÉS EUROPÉENNES
ISTITUTO STATISTICO DELLE COMUNITÀ EUROPEE
BUREAU VOOR DE STATISTIEK DER EUROPESE GEMEENSCHAPPEN
SERVIÇO DE ESTATÍSTICA DAS COMUNIDADES EUROPEIAS

L-2920 Luxembourg – Tél. 43011 – Télex : Comeur Lu 3423
B-1049 Bruxelles, bâtiment Berlaymont, rue de la Loi 200 (bureau de liaison) – Tél. 235 1111

The information included in this bulletin has been taken from the Cronos data bank, which is accessible via the different host companies. For all information about these host companies contact Eurostat in Luxembourg, tel. 4301-4567. To obtain specifications of the principal characteristics of the series contained in this bulletin contact Luxembourg, tel. 4301-3563.

Les informations reprises dans ce bulletin sont extraites de la banque de données Cronos, qui est accessible via différents serveurs. Pour toute information concernant ces serveurs, s'adresser à l'Eurostat, Luxembourg, tél. 4301-4567. Pour obtenir des précisions sur les caractéristiques principales des séries contenues dans ce bulletin, s'adresser à Luxembourg, tél. 4301-3563.

© ECSC-EEC-EAEC, Brussels – Luxembourg, 1988
Reproduction is authorized, except for commercial purposes, provided the source is acknowledged.

© CECA-CEE-CEEA, Bruxelles – Luxembourg, 1988
Reproduction autorisée, sauf à des fins commerciales, moyennant mention de la source.

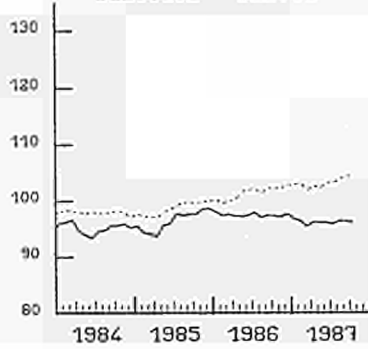
Printed in Luxembourg

RETAIL TRADE VOLUME

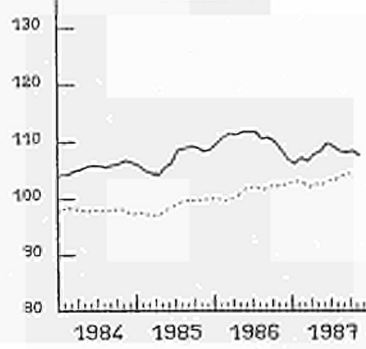
VOLUME DES VENTES

1980 = 100

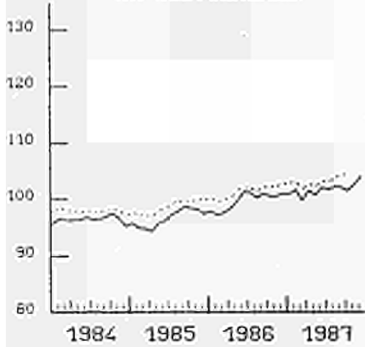
BELGIQUE - BELGIE



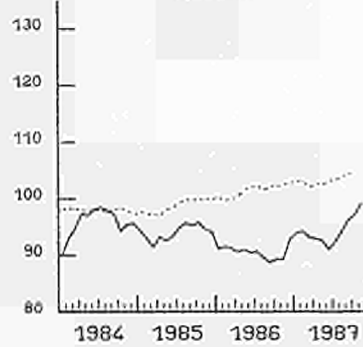
DANMARK



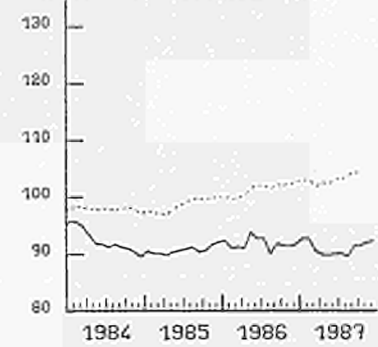
BR DEUTSCHLAND



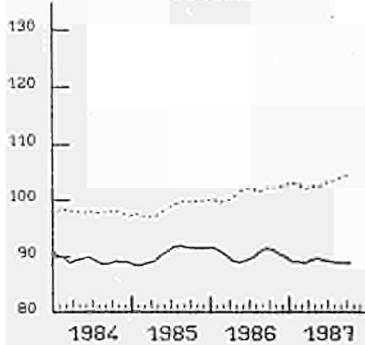
HELLAS



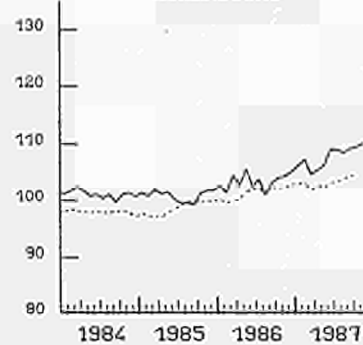
FRANCE



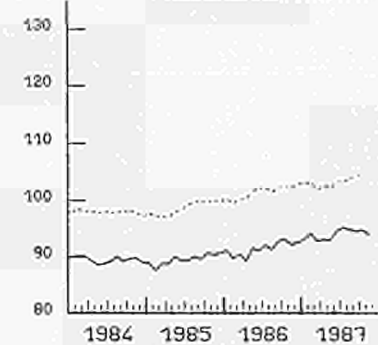
IRELAND



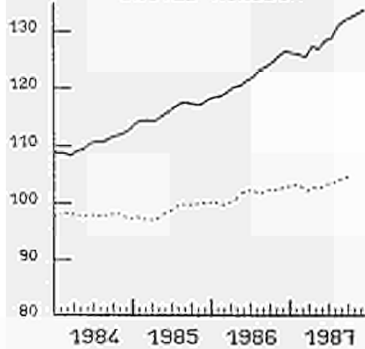
LUXEMBOURG



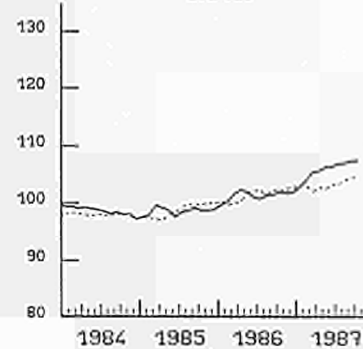
NEDERLAND



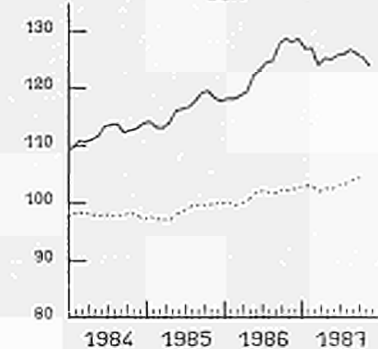
UNITED KINGDOM



JAPAN



USA



..... EUR

SEASONALLY ADJUSTED INDICES
3 MONTH MOVING AVERAGE

INDICE DESAISONALISE
MOYENNE MOBILE SUR 3 MOIS

Not seasonally adjusted index numbers

TAB. 1

Indices non désaisonnalisés

1980 = 100

	BELGIQUE BELGIE	DANMARK	BR DEUTSCH- LAND	HELLAS	FRANCE	IRELAND	LUXEM- BOURG	NEDER- LAND	UNITED KINGDOM	EUR	USA	JAPAN	
1983	95.3	102.7	95.6	92.2	96.4	90.7	103.3	91.8	107.4	98.0	105.3	100.4	1983
1984	95.2	105.8	96.1	96.2	92.0	89.4	101.1	89.3	111.3	97.8	112.2	98.4	1984
1985	96.7	107.0	96.8	93.5	90.5	91.0	100.8	89.7	116.4	98.7	116.8	99.1	1985
1986	97.3	109.9	100.2	91.3	91.5	90.5	103.6	91.7	122.6	101.6	124.2	101.2	1986
1987			102.3		90.9				129.8				1987
1985 IV	105.0	119.7	110.9	102.2	104.3	96.6	109.1	97.3	137.5	112.8	126.3	109.2	IV 1985
1986 I	93.2	102.8	91.6	90.3	84.2	88.8	96.3	84.2	111.0	93.3	109.4	95.1	I 1986
1986 II	99.6	109.4	99.7	90.0	91.8	88.2	101.4	91.9	115.2	100.1	125.6	99.0	II
1986 III	92.4	109.7	95.4	83.0	86.1	89.8	104.4	91.6	119.2	97.3	128.3	99.7	III
1986 IV	104.0	117.5	114.0	102.1	104.1	95.1	112.3	99.0	146.1	115.6	136.4	111.1	IV
1987 I	91.1	97.4	93.0	92.2	83.3	86.8	96.5	86.3	116.3	94.7	112.6	99.6	I 1987
1987 II	98.5	108.1	101.1	89.7	89.3	88.0	108.3	95.3	121.6	101.3	127.9	104.4	II
1987 III	91.8	107.8	97.3	90.4	85.8	87.8	110.1	93.3	126.7	99.7	127.1	105.6	III
1987 IV			117.8		105.2				154.5		133.0		IV
1986 10	101.9	111.5	106.6	91.5	95.9	87.5	111.2	97.8	124.9	106.2	127.7	100.6	10 1986
1986 11	90.7	103.0	105.3	92.4	89.6	87.3	100.9	93.2	138.4	105.8	125.0	100.3	11
1986 12	119.5	138.0	130.0	122.3	126.8	107.6	124.8	106.0	169.3	134.8	156.5	132.3	12
1987 01	90.8	105.7	92.2	95.3	90.9	86.9	99.6	91.3	118.3	97.4	103.7	97.0	01 1987
1987 02	83.7	90.8	87.7	91.6	76.9	87.8	90.5	80.5	114.3	89.7	107.6	91.6	02
1987 03	98.8	95.8	99.0	89.7	82.1	86.1	99.5	87.0	116.4	96.8	121.7	110.2	03
1987 04	101.1	107.0	109.7	96.2	88.6	90.2	113.7	95.2	123.9	105.0	125.8	107.7	04
1987 05	94.5	111.6	97.3	87.5	92.2	89.8	106.4	96.3	117.9	100.0	129.2	103.6	05
1987 06	100.0	105.6	96.3	85.3	87.0	84.8	104.9	94.2	122.7	99.1	128.8	102.0	06
1987 07	91.8	116.6	103.9	88.6	86.4	89.8	121.2	97.4	128.4	103.0	128.8	112.6	07
1987 08	87.8	104.9	91.5	88.6	79.7	87.4	104.2	90.7	126.1	95.4	130.3	103.1	08
1987 09	95.9	101.8	96.5	94.1	91.4	86.4	104.8	91.7	125.8	100.7	122.3	101.0	09
1987 10	101.2	112.3	109.7	101.3	98.4	87.1	118.8	103.4	132.6	110.2	125.2	105.3	10
1987 11	92.1	101.3	110.8	104.1	89.6	85.5	106.4	92.6	145.4	109.4	122.9		11
1987 12			133.0		127.5				179.4		151.0		12

% change over the corresponding period
of the previous year
(not seasonally adjusted)

TAB. 2

Variation (%) par rapport à la période
correspondante de l'année précédente
(non désaisonnalisé)

1980 = 100

	BELGIQUE BELGIE	DANMARK	BR DEUTSCH- LAND	HELLAS	FRANCE	IRELAND	LUXEM- BOURG	NEDER- LAND	UNITED KINGDOM	EUR	USA	JAPAN	
1983	-1.7	1.6	0.8	-0.5	-2.9	-3.5	-5.0	-1.9	5.2	0.4	6.4	-0.1	1983
1984	-0.1	3.0	0.5	4.3	-4.6	-1.4	-2.1	-2.7	3.6	-0.2	6.6	-2.0	1984
1985	1.6	1.1	0.7	-2.8	-1.6	1.8	-0.3	0.4	4.6	1.0	4.1	0.7	1985
1986	0.6	2.7	3.5	-2.4	1.1	-0.5	2.8	2.2	5.3	2.9	6.3	2.1	1986
1987			2.1		-0.7				5.9				1987
1985 IV	3.3	2.0	1.8	-1.2	1.9	3.1	1.3	1.8	4.2	2.4	4.0	2.0	IV 1985
1986 I	3.3	6.9	2.9	-0.3	1.5	1.5	3.2	1.7	5.0	3.0	4.7	2.0	I 1986
1986 II	0.6	5.1	5.9	-2.6	2.1	-1.8	1.9	1.8	5.1	3.9	6.0	2.9	II
1986 III	-0.2	1.3	2.5	-6.4	1.5	-0.3	3.2	3.8	5.9	2.7	7.3	2.1	III
1986 IV	-0.9	-1.8	2.8	-0.2	-0.2	-1.6	2.9	1.7	6.3	2.5	8.0	1.7	IV
1987 I	-2.3	-5.2	1.5	2.1	-1.0	-2.3	0.3	2.5	4.8	1.4	2.9	4.7	I 1987
1987 II	-1.1	-1.2	1.4	-0.3	-2.8	-0.2	6.9	3.7	5.6	1.2	1.9	5.5	II
1987 III	-0.6	-1.8	2.0	9.0	-0.3	-2.2	5.5	1.9	6.3	2.4	-0.9	5.9	III
1987 IV			3.4		1.0				5.7		-2.5		IV
1986 10	-0.6	1.9	1.7	-7.9	-0.8	-1.7	3.2	2.5	7.8	2.1	7.9	3.2	10 1986
1986 11	-5.9	-7.2	-1.6	-1.3	-4.5	-2.6	-2.3	-3.5	8.5	-0.3	4.1	1.2	11
1986 12	3.0	-0.4	7.5	7.6	3.7	-0.6	7.4	6.0	3.9	5.1	11.4	1.1	12
1987 01	-1.2	-5.0	0.7	3.5	1.9	-5.3	5.7	3.6	5.2	2.0	1.0	6.4	01 1987
1987 02	-6.4	-2.8	3.2	-1.3	0.0	-1.1	5.0	5.5	6.4	2.6	5.2	4.6	02
1987 03	0.5	-7.6	0.9	4.3	-4.9	-0.2	-8.2	-1.2	3.5	-0.2	2.7	3.4	03
1987 04	1.9	1.8	5.1	4.8	0.7	0.4	12.8	7.8	7.4	4.5	4.0	3.7	04
1987 05	-5.5	-4.4	-2.9	-5.1	-7.7	1.7	-0.7	-2.3	4.6	-2.6	-1.2	7.2	05
1987 06	0.3	-0.8	1.8	-0.7	-0.7	-2.3	9.2	6.1	4.8	2.0	3.0	5.6	06
1987 07	0.1	1.0	4.2	11.6	0.8	-1.0	7.4	7.0	6.8	4.1	2.2	6.2	07
1987 08	-0.8	-3.4	1.9	5.9	-2.5	-2.3	4.1	-1.3	7.4	1.9	0.7	4.5	08
1987 09	-1.1	-3.1	-0.3	9.5	0.6	-3.5	4.6	-0.1	5.1	1.3	-5.5	7.0	09
1987 10	-0.7	0.7	2.9	10.7	2.5	-0.5	6.8	5.8	6.2	3.7	-2.0	4.7	10
1987 11	1.5	-1.7	5.2	12.7	0.0	-2.1	5.5	-0.7	5.1	3.4	-1.6		11
1987 12			2.3		0.6				6.0		-3.5		12

Seasonally adjusted index numbers

TAB. 3
1980 = 100

Indices désaisonnalisés

	BELGIQUE BELGIE	DANMARK	BR DEUTSCH- LAND	HELLAS	FRANCE	IRELAND	LUXEM- BOURG	NEDER- LAND	UNITED KINGDOM	EUR	USA	JAPAN	
1983	95.3	102.7	95.6	92.2	96.4	90.7	103.3	91.8	107.4	98.0	105.3	100.4	1983
1984	95.2	105.8	96.1	96.2	92.0	89.4	101.1	89.3	111.3	97.8	112.2	98.4	1984
1985	96.7	107.0	96.8	93.5	90.5	91.0	100.8	89.7	116.4	98.7	116.8	99.1	1985
1986	97.3	109.9	100.2	91.3	91.5	90.5	103.6	91.7	122.6	101.6	124.2	101.2	1986
1987			102.3		90.9				129.8				1987
1985 IV	98.6	108.6	97.4	94.1	92.1	91.3	101.8	90.7	117.9	99.9	118.5	99.3	IV 1985
1986 I	97.5	111.4	97.6	91.2	91.5	90.7	104.4	90.5	119.4	100.0	118.8	101.5	I 1986
1986 II	97.4	111.7	101.3	90.4	92.4	89.7	102.5	91.1	121.5	102.0	123.3	101.0	II
1986 III	97.4	110.7	101.0	88.7	91.7	91.0	103.1	92.7	123.6	102.2	127.7	101.4	III
1986 IV	97.6	106.9	101.0	92.7	91.5	89.8	105.1	92.5	126.3	102.7	128.7	101.7	IV
1987 I	95.4	106.5	99.8	93.1	90.5	88.9	104.6	92.8	125.5	101.7	124.0	105.3	I 1987
1987 II	96.1	109.7	102.1	90.9	90.0	89.4	109.0	94.5	128.6	103.2	125.8	106.3	II
1987 III	96.3	108.1	102.1	96.1	91.4	88.9	109.1	94.5	131.7	104.4	126.1	107.3	III
1987 IV			104.0		92.3				133.4		124.6		IV
1986 10	99.0	109.4	101.6	89.9	91.2	89.7	106.8	93.8	125.0	102.7	128.2	102.5	10 1986
1986 11	94.9	104.8	98.3	89.5	90.8	89.5	102.1	90.4	127.1	101.3	124.3	101.1	11
1986 12	98.9	106.6	103.0	98.7	92.5	90.1	106.3	93.3	126.7	104.0	133.7	101.5	12
1987 01	96.7	106.8	101.4	93.3	94.6	87.7	110.0	95.5	123.6	103.3	123.0	105.2	01 1987
1987 02	93.4	108.3	100.6	90.5	90.6	89.5	105.3	93.7	126.8	102.3	124.8	104.6	02
1987 03	96.2	104.4	97.3	95.4	86.2	89.3	98.4	89.3	126.0	99.6	124.2	106.1	03
1987 04	99.0	110.7	106.4	92.5	92.9	89.8	112.5	96.2	129.9	106.1	126.9	105.8	04
1987 05	93.0	109.7	98.2	89.6	90.2	90.4	107.6	93.4	126.3	101.2	124.2	106.5	05
1987 06	96.4	108.6	101.8	90.5	86.9	88.4	106.9	94.0	129.3	102.4	126.2	106.6	06
1987 07	97.9	108.9	105.1	96.8	93.1	89.1	112.3	98.1	131.0	106.1	127.7	107.4	07
1987 08	94.9	107.5	100.0	95.0	88.9	89.6	105.9	92.4	132.1	102.8	126.4	106.7	08
1987 09	96.1	108.0	101.3	96.6	92.2	88.2	109.0	93.0	132.0	104.2	124.2	107.9	09
1987 10	97.2	109.6	103.2	99.3	93.3	89.2	113.2	98.5	133.0	106.0	125.2	107.6	10
1987 11	95.9	104.8	103.3	101.2	90.6	87.7	107.9	90.3	133.6	104.7	122.4		11
1987 12			105.4		93.1				133.5		126.2		12

Three month moving average
(seasonally adjusted)

TAB. 4
1980 = 100

Moyennes mobiles sur trois mois
(désaisonnalisé)

	BELGIQUE BELGIE	DANMARK	BR DEUTSCH- LAND	HELLAS	FRANCE	IRELAND	LUXEM- BOURG	NEDER- LAND	UNITED KINGDOM	EUR	USA	JAPAN	
1985 10	97.6	109.0	98.4	95.7	90.6	91.1	101.3	90.7	117.1	99.7	120.1	98.7	10 1985
1985 11	98.5	108.4	98.2	94.5	91.6	91.2	101.8	90.4	117.1	99.9	119.0	99.3	11
1985 12	98.6	108.6	97.4	94.1	92.1	91.3	101.8	90.7	117.9	99.9	118.5	99.3	12
1986 04	97.3	111.2	98.4	90.5	91.2	89.7	102.7	89.3	120.2	100.2	119.5	102.3	04 1986
1986 05	97.2	111.7	99.6	91.0	93.6	89.3	105.5	91.5	120.4	101.6	122.3	101.8	05
1986 06	97.4	111.7	101.3	90.4	92.4	89.7	102.5	91.1	121.3	102.0	123.3	101.0	06
1986 07	97.9	111.7	101.2	90.6	92.4	89.9	103.7	92.1	121.9	102.2	124.5	100.6	07
1986 08	97.0	110.5	100.3	89.5	90.2	90.7	101.0	91.3	123.2	101.3	124.8	101.3	08
1986 09	97.4	110.7	101.0	88.7	91.7	91.0	103.1	92.7	123.6	102.2	127.7	101.4	09
1986 10	97.3	110.0	100.5	89.3	91.3	90.9	104.0	93.2	124.4	102.1	128.7	101.8	10
1986 11	97.1	108.5	100.5	89.2	91.2	90.3	104.3	92.2	125.5	102.2	128.0	101.6	11
1986 12	97.6	106.9	101.0	92.7	91.5	89.8	105.1	92.5	126.3	102.7	128.7	101.7	12
1987 01	96.8	106.1	100.9	93.8	92.6	89.2	106.1	93.1	125.9	102.9	127.0	102.6	01 1987
1987 02	96.4	107.2	101.7	94.2	92.6	89.2	107.2	94.2	125.8	103.2	127.1	103.8	02
1987 03	95.4	106.5	99.8	93.1	90.5	88.9	104.6	92.8	125.5	101.7	124.0	105.3	03
1987 04	96.2	107.8	101.5	92.8	89.9	89.5	105.4	93.0	127.4	102.7	125.3	105.5	04
1987 05	96.1	108.3	100.7	92.5	89.8	89.8	106.2	92.9	127.3	102.3	125.1	106.2	05
1987 06	96.1	109.7	102.1	90.9	90.0	89.4	109.0	94.5	128.6	103.2	125.8	106.3	06
1987 07	95.8	109.1	101.7	92.3	90.1	89.2	108.9	95.2	128.9	103.2	126.0	106.8	07
1987 08	96.4	108.3	102.3	94.1	89.6	89.0	108.4	94.8	130.7	103.8	126.8	106.9	08
1987 09	96.3	108.1	102.1	96.1	91.4	88.9	109.1	94.5	131.7	104.4	126.1	107.3	09
1987 10	96.1	108.4	101.5	97.0	91.5	88.9	109.4	94.7	132.3	104.3	125.3	107.4	10
1987 11	96.4	107.5	102.6	99.0	92.0	88.4	110.0	94.0	132.8	105.0	123.9		11
1987 12			104.0		92.3				133.4		124.6		12

VOLUME OF RETAIL SALES
FOOD BEVERAGES AND TOBACCO

VOLUME DES VENTES DU COMMERCE DE DETAIL
PRODUITS ALIMENTAIRES, BOISSONS ET TABAC

Not seasonally adjusted index numbers

TAB. 5

Indices non désaisonnalisés

1980 = 100

	BELGIQUE BELGIE	DANMARK	BR DEUTSCH- LAND	HELLAS	FRANCE	IRELAND	NEDER- LAND	UNITED KINGDOM	EUR	
1983	96.2	102.3	101.8	93.2	93.6	96.1	96.0	105.0	99.1	1983
1984	97.5	105.1	102.9	93.5	89.8	96.2	90.4	106.9	98.5	1984
1985	98.1	104.5	105.1	97.6	88.1	98.5	92.7	110.8	99.9	1985
1986	97.6	108.6		103.3	88.0	98.6	93.5	114.4		1986
1987					87.1			118.8		1987
1985 IV	105.1	113.1	114.9	104.0	92.5	103.3	97.2	119.9	107.0	IV 1985
1986 I	95.4	101.8	100.9	104.1	83.5	97.3	90.3	109.8	97.0	I 1986
II	98.8	109.8	107.1	104.4	88.0	96.7	94.4	112.7	101.4	II
III	93.5	107.7	104.9	93.3	87.9	97.7	92.2	112.0	99.7	III
IV	102.9	115.0		111.4	92.7	102.8	97.1	123.6		IV
1987 I	88.2	98.7		110.2	82.4	95.0	91.9	113.0		I 1987
II	92.9	111.3		106.8	86.0		96.6	116.7		II
III	89.9	108.4		104.9	86.9		92.4	117.1		III
IV					93.1			128.4		IV
1986 10	100.3	109.2	111.2	99.7	89.1	97.0	95.4	114.5	103.3	10 1986
11	92.3	104.0	107.4	103.2	83.7	93.9	91.3	120.0	101.2	11
12	116.2	131.9		131.2	105.3	114.6	104.5	133.7		12
1987 01	90.4	101.9		108.0	87.8	91.0	96.1	112.4		01 1987
02	85.0	93.7		109.1	76.9	97.6	86.7	112.4		02
03	89.3	100.5		113.6	82.5	96.1	92.9	114.0		03
04	92.3	110.5		113.7	86.0	99.0	94.9	118.9		04
05	93.0	113.7		108.0	87.5	98.9	99.6	114.8		05
06	93.4	109.8		98.8	84.6	93.1	95.2	116.3		06
07	89.1	115.6		97.4	88.8	100.2	98.8	118.1		07
08	89.2	105.7		103.4	86.7	98.0	92.3	118.0		08
09	91.5	104.0		114.0	85.1	93.5	86.2	115.5		09
10	95.0	112.4		121.8	90.4	94.8	94.2	119.0		10
11	89.1	103.0		120.3	82.7		89.6	123.7		11
12					106.1			139.8		12

Seasonally adjusted index numbers

TAB. 6

Indices désaisonnalisés

1980 = 100

	BELGIQUE BELGIE	DANMARK	BR DEUTSCH- LAND	HELLAS	FRANCE	IRELAND	NEDER- LAND	UNITED KINGDOM	EUR	
1983	96.2	102.3	101.8	93.2	93.6	96.1	96.0	105.0	99.1	1983
1984	97.5	105.1	102.9	93.5	89.8	96.2	90.4	106.9	98.5	1984
1985	98.1	104.5	105.1	97.6	88.1	98.5	92.7	110.8	99.9	1985
1986	97.6	108.6		103.3	88.0	98.6	93.5	114.4		1986
1987					87.1			118.8		1987
1985 IV	101.2	107.1	106.2	100.6	89.4	98.3	92.7	111.8	101.2	IV 1985
1986 I	98.7	109.7	106.3	102.1	88.2	101.1	94.1	113.5	101.4	I 1986
II	97.4	108.9	107.9	104.4	88.8	97.4	93.8	113.9	102.0	II
III	96.5	108.7	107.5	99.7	89.0	97.5	94.4	114.3	101.9	III
IV	98.2	115.1		106.9	89.4	98.0	93.0	116.1		IV
1987 I	92.2	107.0		107.9	87.1	98.7	94.5	116.8		I 1987
II	91.5	110.0		106.2	86.9		95.4	118.0		II
III	92.4	109.3		111.1	88.0		94.9	119.6		III
IV					89.6			120.5		IV
1986 10	100.2	109.3	109.6	101.8	88.4	98.2	95.1	115.9	103.3	10 1986
11	95.4	104.0	104.7	105.8	87.7	98.7	91.6	116.5	101.3	11
12	99.1	131.9		113.1	89.3	97.2	92.2	115.9		12
1987 01	94.5	108.4		105.0	89.9	99.8	97.9	118.0		01 1987
02	93.1	108.0		108.7	86.1	99.5	94.4	116.5		02
03	88.9	104.5		110.1	82.8	97.2	91.2	116.2		03
04	94.0	111.5		108.9	87.9	97.8	96.1	119.6		04
05	90.6	109.2		105.6	86.4	98.6	95.1	116.8		05
06	89.8	109.2		104.1	83.8	96.1	95.1	117.8		06
07	93.1	108.7		107.4	88.0	96.0	100.3	118.8		07
08	91.1	107.9		111.4	84.8	97.0	93.3	119.9		08
09	93.0	111.3		114.5	88.6	97.8	91.1	120.3		09
10	93.2	111.5		122.7	89.6	96.0	93.9	120.7		10
11	90.8	107.1		121.9	86.5		90.2	120.3		11
12					89.9			120.8		12

Not seasonally adjusted index numbers

TAB. 7

Indices non désaisonnalisés

1980 = 100

	BELGIQUE BELGIE	DANMARK	BR DEUTSCH- LAND	HELLAS	FRANCE	IRELAND	UNITED KINGDOM	EUR	
1983	109.7	109.0	91.0	89.2	95.3	100.6	110.0	98.2	1983
1984	106.4	110.2	91.6	90.4	87.5	99.0	119.0	98.9	1984
1985	105.6	112.7	93.3	83.1	83.6	101.2	128.0	100.9	1985
1986	99.8	112.5		79.0	81.5	103.0	137.0		1986
1987					77.1		148.0		1987
1985 IV	123.9	139.2	120.0	96.7	109.7	127.9	158.0	126.6	IV 1985
1986 I	88.5	100.5	80.5	69.7	68.1	80.9	111.0	85.9	I 1986
II	105.0	111.2	92.1	83.8	88.3	100.6	130.0	101.6	II
III	94.2	110.3	88.5	68.8	67.4	100.2	137.0	96.7	III
IV	111.4	128.2		93.5	102.2	130.3	171.0		IV
1987 I	91.3	94.1		66.3	64.9	80.9	116.0		I 1987
II	105.7	103.6		77.3	82.5		139.0		II
III	92.2	102.0		70.0	61.7		149.0		III
IV					99.4		186.0		IV
1986 10	112.4	124.0	115.7	79.6	98.7	100.8	140.0	116.9	10 1986
11	93.6	104.9	114.3	83.8	87.3	107.4	149.0	115.1	11
12	128.3	155.7		117.2	120.6	172.1	213.0		12
1987 01	100.1	126.2		73.7	80.6	96.4	131.0		01 1987
02	72.1	76.5		70.5	51.3	74.8	107.0		02
03	101.8	79.7		54.7	62.9	73.5	112.0		03
04	128.1	106.4		95.5	89.2	110.1	141.0		04
05	97.9	112.2		70.0	82.2	106.6	131.0		05
06	91.0	92.1		66.5	76.2	98.7	144.0		06
07	98.5	122.8		72.4	66.6	102.6	157.0		07
08	78.4	92.0		76.5	48.6	94.4	149.0		08
09	99.8	91.1		61.1	69.9	94.9	144.0		09
10	117.6	123.2		75.9	99.2	104.2	156.0		10
11	94.5	97.6		81.8	83.2		163.0		11
12					115.8		229.0		12

Seasonally adjusted index numbers

TAB. 8

Indices désaisonnalisés

1980 = 100

	BELGIQUE BELGIE	DANMARK	BR DEUTSCH- LAND	HELLAS	FRANCE	IRELAND	UNITED KINGDOM	EUR	
1983	109.7	109.0	91.0	89.2	95.3	100.6	110.0	98.2	1983
1984	106.4	110.2	91.6	90.4	87.5	99.0	119.0	98.9	1984
1985	105.6	112.7	93.3	83.1	83.6	101.2	128.0	100.9	1985
1986	99.8	112.5		79.0	81.5	103.0	137.0		1986
1987					77.1		148.0		1987
1985 IV	107.9	112.8	93.3	84.1	79.9	102.3	130.0	100.9	IV 1985
1986 I	102.1	115.9	92.3	79.4	76.6	100.3	132.0	99.7	I 1986
II	99.1	117.3	95.7	75.4	76.5	101.3	136.0	102.0	II
III	102.4	114.8	97.1	77.9	75.6	102.9	138.0	103.0	III
IV	95.4	105.1		80.1	73.9	103.9	140.0		IV
1987 I	103.6	109.0		75.9	73.2	100.4	140.0		I 1987
II	100.2	109.0		70.7	71.8		146.0		II
III	100.3	105.0		78.5	69.5		150.0		III
IV					72.0		154.0		IV
1986 10	96.5	109.4	95.5	82.9	78.1	102.3	139.0	101.7	10 1986
11	93.0	98.5	92.8	78.2	79.7	105.3	141.0	101.0	11
12	96.6	107.4		79.2	81.4	104.0	142.0		12
1987 01	105.2	108.8		81.7	86.9	103.2	139.0		01 1987
02	101.7	113.0		70.1	79.2	95.5	142.0		02
03	103.8	105.3		75.8	70.8	102.1	140.0		03
04	114.0	112.1		75.0	86.2	115.5	151.0		04
05	94.2	109.8		66.9	75.0	104.9	142.0		05
06	92.3	105.1		70.1	71.1	98.4	147.0		06
07	103.5	109.4		78.7	81.0	101.0	151.0		07
08	99.9	107.9		77.0	75.5	99.4	152.0		08
09	97.5	97.8		79.9	68.5	98.8	149.0		09
10	101.8	107.6		78.2	78.7	105.7	155.0		10
11	95.9	94.3		75.8	76.0		154.0		11
12					78.2		152.0		12

VOLUME OF RETAIL SALES
HOUSEHOLD EQUIPMENT

VOLUME DES VENTES DU COMMERCE DE DETAIL
PRODUITS D'EQUIPEMENT DU MENAGE

Not seasonally adjusted index numbers

TAB. 9

Indices non désaisonnalisés

1980 = 100

	BELGIQUE BELGIE	BR DEUTSCH- LAND	HELLAS	FRANCE	IRELAND	NEDER- LAND	UNITED KINGDOM	EUR	
1983	98.0	92.8	89.9	98.3	88.2	91.6	118.0	98.8	1983
1984	98.0	93.6	93.9	93.9	89.4	91.6	126.0	99.5	1984
1985	102.5	92.2	98.9	94.3	93.8	93.2	135.0	101.1	1985
1986	98.0		100.2	101.0	95.8	95.4	150.0		1986
1987				103.8			162.0		1987
1985 IV	115.7	116.0	133.2	115.8	111.8	111.9	164.0	123.9	IV 1985
1986 I	88.0	82.9	98.5	93.2	82.2	87.6	137.0	95.9	I 1986
II	97.7	87.5	90.4	96.1	90.7	83.2	135.0	98.6	II
III	94.4	88.0	77.5	92.6	94.4	91.6	147.0	99.9	III
IV	111.9		134.3	122.0	116.0	119.1	184.0		IV
1987 I	91.0		89.9	96.3	85.3	93.0	149.0		I 1987
II	101.2		97.4	94.1		90.8	146.0		II
III	102.7		98.9	98.3		102.4	160.0		III
IV				126.7			195.0		IV
1986 10	101.2	105.8	100.2	107.8	94.7	104.1	160.0	115.2	10 1986
11	92.5	110.8	112.3	104.3	106.8	111.8	181.0	120.2	11
12	141.8		190.6	153.9	140.5	141.5	205.0		12
1987 01	87.9		93.2	106.3	79.6	102.3	154.0		01 1987
02	86.4		92.5	90.3	88.7	87.2	149.0		02
03	98.8		84.1	92.3	87.1	89.6	144.0		03
04	97.9		97.7	90.6	95.1	81.8	146.0		04
05	95.0		96.9	97.6	98.9	92.2	143.0		05
06	110.8		97.7	94.0	95.6	98.3	149.0		06
07	98.5		102.4	95.9	101.5	104.5	158.0		07
08	99.6		96.6	89.4	94.7	100.9	161.0		08
09	109.9		97.7	109.6	97.9	101.7	161.0		09
10	108.4		105.2	113.4	100.7	110.2	171.0		10
11	101.3		116.5	109.1		110.9	191.0		11
12				157.7			216.0		12

Seasonally adjusted index numbers

TAB. 10

Indices désaisonnalisés

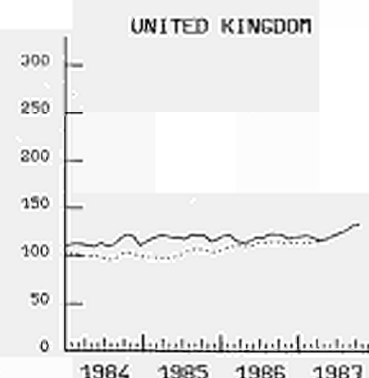
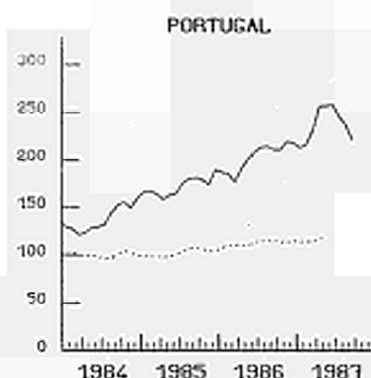
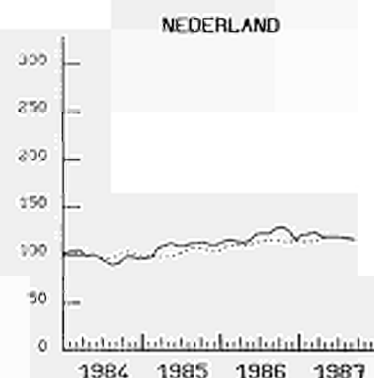
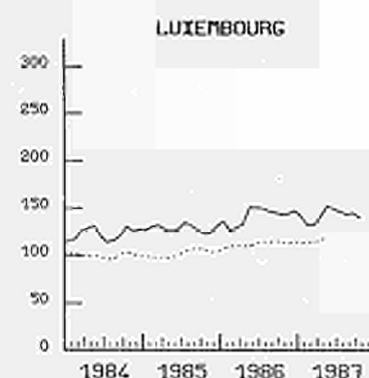
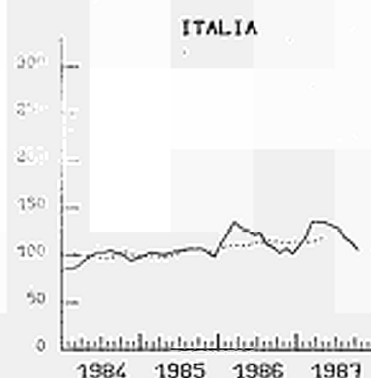
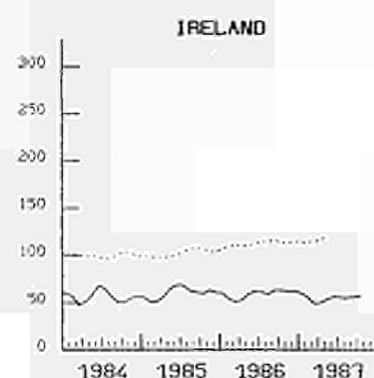
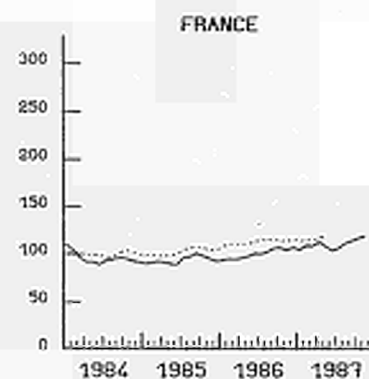
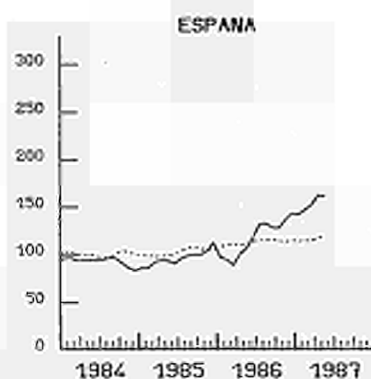
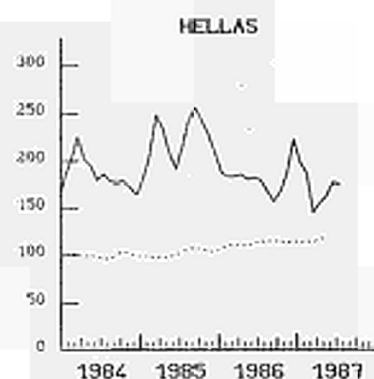
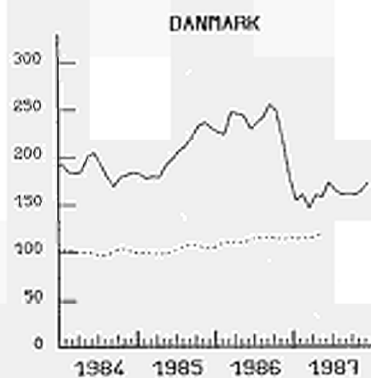
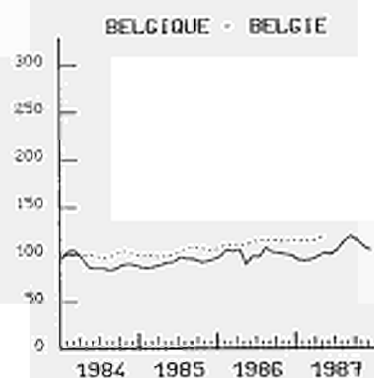
1980 = 100

	BELGIQUE BELGIE	BR DEUTSCH- LAND	HELLAS	FRANCE	IRELAND	NEDER- LAND	UNITED KINGDOM	EUR	
1983	98.0	92.8	89.9	98.3	88.2	91.6	118.0	98.8	1983
1984	98.0	93.6	93.9	93.9	89.4	91.6	126.0	99.5	1984
1985	102.5	92.2	98.9	94.3	93.8	93.2	135.0	101.1	1985
1986	98.0		100.2	101.0	95.8	95.4	150.0		1986
1987				103.8			162.0		1987
1985 IV	103.6	91.4	118.5	98.4	94.6	96.1	139.0	103.2	IV 1985
1986 I	99.9	90.8	103.8	100.7	92.6	92.1	141.0	103.1	I 1986
II	97.7	94.5	99.9	104.9	94.5	92.0	149.0	106.6	II
III	96.4	96.3	84.5	101.4	95.3	94.2	153.0	107.1	III
IV	98.7		108.9	103.0	97.9	99.7	159.0		IV
1987 I	101.2		94.7	104.0	96.1	97.9	154.0		I 1987
II	100.8		104.5	102.9		100.5	161.0		II
III	104.1		106.3	107.6		105.5	167.0		III
IV				107.0			168.0		IV
1986 10	98.5	98.4	89.8	101.5	96.3	96.8	155.0	108.8	10 1986
11	96.8	95.6	99.3	102.2	97.8	98.3	159.0	108.8	11
12	100.7		137.7	103.8	99.2	104.1	163.0		12
1987 01	104.2		89.1	107.0	91.1	97.6	144.0		01 1987
02	98.9		97.2	103.2	99.7	98.8	158.0		02
03	100.5		97.8	100.4	97.2	97.3	157.0		03
04	101.9		100.9	103.1	101.4	95.8	158.0		04
05	96.3		107.7	103.6	102.4	101.5	159.0		05
06	104.3		104.8	100.5	98.1	104.1	165.0		06
07	102.4		114.0	107.5	98.7	108.2	165.0		07
08	104.5		98.4	102.8	101.2	104.3	169.0		08
09	105.3		106.5	110.9	97.6	104.0	168.0		09
10	105.4		96.2	106.3	102.4	103.4	166.0		10
11	106.1		101.5	106.4		98.9	168.0		11
12				106.8			170.0		12

FIRST REGISTRATION OF PRIVATE
AND COMMERCIAL CARS

PREMIERES IMMATRICULATION DE VOITURES
PARTICULIERES ET COMMERCIALES

1980 = 100



..... EUR

SEASONALLY ADJUSTED INDICES
3 MONTH MOVING AVERAGE

INDICE DESAISONALISEE
MOYENNE MOBILE SUR 3 MOIS

TAB. 11

1000

	BELGIQUE BELGIE	DANMARK	BR DEUTSCH- LAND	HELLAS	ESPAÑA	FRANCE	IRELAND	ITALIA	LUXEM- BOURG	NEDER- LAND	PORTUGAL	UNITED KINGDOM	EUR		
1983	357	116	2427	59	550	2018	61	1451	26	459	73	1773	9372	1983	
1984	370	134	2394	64	522	1758	56	1597	29	462	70	1722	9177	1984	
1985	378	157	2379	77	575	1762	60	1646	29	496	85	1804	9449	1985	
1986	409	169	2830	64	689	1912	59	1854	33	561	100	1839	10519	1986	
1987	428	124	2916				54		33					1987	
1985 IV	77	35	561	18	166	476	7	394	6	85	23	335	2184	IV 1985	
1986 I	126	53	670	15	126	433	19	552	9	178	21	491	2694	I 1986	
II	117	49	807	14	179	504	18	520	11	171	27	444	2862	II	
III	86	43	647	22	173	426	14	398	7	122	24	566	2528	III	
IV	80	24	705	20	211	548	7	384	6	89	28	338	2441	IV	
1987 I	120	31	629	12	213	495	17	585	10	189	28	512	2840	I 1987	
II	119	40	868	13		499	18	575	11	167	34	457		II	
III	106	29	688	15		471	12	410	7	111	25	622		III	
IV	83	25	730				7		6					IV	
1986 10	36.78	12.40	252.80	6.31	71.30	187.40	3.89	171.00	2.56	46.81	8.79	130.40	930.43	10 1986	
11	24.08	6.23	203.90	6.30	68.40	167.30	2.20	127.90	1.93	30.85	9.00	127.90	775.98	11	
12	19.28	5.08	248.60	7.68	71.00	193.60	1.20	85.60	1.76	11.12	9.92	80.00	734.84	12	
1987 01	36.13	7.32	145.10	4.38	59.50	137.20	7.22	210.60	1.90	85.52	6.63	169.90	871.41	01 1987	
02	36.93	10.05	190.20	3.86	68.70	154.30	5.18	171.70	2.83	42.15	9.24	165.30	860.45	02	
03	46.47	13.72	293.50	3.66	84.40	203.80	4.97	203.20	4.77	61.22	11.73	176.40	1107.85	03	
04	43.56	14.71	318.60	4.87	86.10	192.10	6.14	212.40	4.35	62.05	12.35	147.80	1105.02	04	
05	35.49	13.12	285.00	4.10	80.30	155.70	6.14	187.80	3.47	53.50	10.67	160.70	996.00	05	
06	39.99	11.88	264.30	3.94		151.20	5.26	174.40	2.90	51.87	10.85	149.00		06	
07	39.26	9.86	270.80	6.23		195.90	5.03	199.00	2.86	42.02	10.53	46.40		07	
08	35.83	8.16	183.20	4.38		146.00	3.43	76.20	1.75	31.04	7.99	403.30		08	
09	31.31	10.68	234.50	4.61		129.60	3.67	135.00	2.08	38.04	6.70	172.50		09	
10	35.83	9.95	258.40			232.30	3.50	160.30	2.35			139.30		10	
11	27.83	7.36	224.90			197.10	2.12		1.79			141.00		11	
12	19.74	7.30	247.10				1.02		1.60					12	
Seasonally adjusted index numbers							1980 = 100						Indices désaisonnalisés		
1985 IV	94.9	230.2	104.2	209.9	112.7	92.0	60.5	98.2	130.9	110.0	180.9	117.6	103.5	IV 1985	
1986 I	102.2	246.6	102.4	185.0	88.2	94.3	50.9	135.2	129.5	113.7	178.1	115.3	110.2	I 1986	
II	98.6	229.2	114.6	182.9	117.3	100.3	62.4	121.4	150.9	121.5	208.7	119.4	113.7	II	
III	102.1	254.5	119.0	214.9	127.8	105.7	63.3	107.9	145.4	127.4	205.7	122.7	115.2	III	
IV	98.6	178.4	128.0	231.0	142.7	106.7	62.4	101.4	147.3	115.9	218.0	119.4	114.8	IV	
1987 I	94.6	145.7	102.5	150.9	151.9	107.8	49.8	135.6	132.5	123.9	232.0	118.6	113.6	I 1987	
II	99.7	172.5	123.5	178.9		103.2	56.5	131.0	149.4	118.9	258.1	121.0		II	
III	119.0	160.9	124.3	141.3		113.1	55.2	113.6	145.1	115.9	221.3	131.7		III	
IV	103.9	171.7	128.7				57.7		135.6					IV	
1986 10	104.9	221.4	120.6	202.5	141.6	107.4	63.2	119.7	150.3	126.5	218.0	116.0	116.8	10 1986	
11	92.4	145.8	117.0	206.1	143.6	97.3	53.4	101.9	141.9	111.7	226.8	118.7	108.6	11	
12	98.5	167.9	146.2	284.5	142.9	115.3	70.5	82.5	149.6	109.4	209.3	123.4	119.0	12	
1987 01	91.4	148.6	92.7	129.3	138.2	99.4	56.9	146.5	132.4	141.6	202.6	119.6	111.8	01 1987	
02	90.5	165.7	105.2	168.6	159.5	110.5	41.4	127.6	113.9	113.0	236.6	121.5	113.3	02	
03	101.8	122.7	109.7	154.8	158.0	113.6	51.2	132.7	151.2	117.2	257.0	114.8	115.6	03	
04	100.9	190.7	123.4	158.4	168.1	113.0	58.6	145.2	159.1	126.7	275.8	111.7	122.3	04	
05	101.6	162.0	120.9	190.1	158.6		96.7	53.1	125.1	147.2	112.6	237.7	116.0	05	
06	96.6	164.9	126.2	188.3			99.9	57.7	122.6	142.0	117.4	260.6		06	
07	116.6	165.6	134.3	147.3			119.5	56.1	137.2	150.7	125.6	238.2		07	
08	126.9	147.3	117.1	136.3			112.0	52.6	95.5	137.7	108.7	212.4		08	
09	113.5	169.8	121.5	140.3			107.8	57.0	108.1	146.8	113.5	213.3		09	
10	103.8	162.0	121.8				128.6	58.4	112.8	136.8				10	
11	106.3	159.2	125.5				117.5	55.1		134.0				11	
12	101.8	193.9	138.8					59.7		136.1				12	

Explanatory notes

A. Turnover in the retail trade

1. Volume of sales: volume indices (quantity) are the ratio between the indices of sales at current prices and the corresponding price indices (prices of goods sold through retail outlets).
2. Data source: the indices are provided by the national statistical institutes. In cases where these calculate only indices of sales at current prices (in the Netherlands, Luxembourg, Greece, the United States and Japan), the SOEC calculates the volume indices from the current price indices and the corresponding consumer price indices. The same applies to seasonally adjusted indices: the national indices are given for France, the United Kingdom, Ireland and Denmark whereas for the other countries a seasonal adjustment is calculated by the SOEC.
For the United Kingdom and Ireland, the monthly indices correspond to the averages of weekly sales.
3. Base year for the indices: the year 1980 was chosen by the SOEC but is in some cases only an arithmetical base to which the national series are corrected. The real base, to which the structure of the universe refers, varies from country to country.
4. Field covered: in principle, the indices cover the whole of retail trade. In Luxembourg, however, they cover only sales from hypermarkets and chain stores selling mainly foodstuffs.
5. Turnover by group of activity: Once a quarter (months 1, 4, 7 and 10) this bulletin publishes volume indices (gross and seasonally adjusted) for sales by enterprises whose main activity is the retail sale of one of the following three groups of products:
 - food, drink, tobacco (NACE 641/2)
 - clothing, footwear, leather goods (NACE 645-646)
 - household equipment (NACE 647 and 648/9).These indices are not available, however, for all countries, and in some cases they do not exactly cover sales in the three groups of products as defined by the NACE. The available indices may, however, be considered to be representative of sales trends in each of the three groups of enterprises.
6. EUR index: the Community index is calculated on the basis of the available data and where necessary Eurostat estimates. It is obtained by weighting the national indices by the volume of goods (habitually sold by the retail trade) consumed by households in 1980. The Luxembourg indices are weighted by the volume of goods sold in 1980 by hypermarkets and chain stores.
7. The moving averages for three months correspond to the simple arithmetic mean of three consecutive monthly indices. For the United Kingdom and Ireland, the arithmetic means are weighted according to the number of weeks in each month. They are localized on the last month of the period concerned.

B. Registration of private and commercial vehicles

1. Private and commercial vehicles: Motorized road vehicle for the transport of passengers, with seats for a maximum of 9 persons including the driver. Also included are hire vehicles and vehicles for mixed use (for the transport of goods as well as or instead of passengers).
2. First registrations: are the number of road vehicles registered for the first time during the course of the reference year by the country making the declaration.
3. EUR 12 index: the weightings correspond to the number of vehicles registered during 1980 in each country.
4. Seasonal adjustment: the seasonal adjustments to the data are made by SOEC. In view of the highly irregular variations noted in the seasonally adjusted series, the seasonal component is currently being studied at the SOEC. The graphs have been drawn up from seasonally adjusted series, smoothed out using a simple arithmetic mean of three consecutive monthly averages localized, as for the retail trade, on the final month of the period concerned.

A. Chiffre d'affaires du commerce de détail

1. Volume des ventes: Les indices de volume (quantité) des ventes correspondent au rapport entre les indices des ventes à prix courants et les indices des prix correspondants (prix des biens vendus par le commerce de détail).
2. Source des données: Les indices sont fournis par les Instituts nationaux de statistique. Pour les pays où les Instituts calculent uniquement des indices de ventes à prix courants (Pays-Bas, Luxembourg, Grèce, États-Unis et Japon), c'est l'OSCE qui calcule les indices de volume à partir desdits indices à prix courants et des indices correspondants des prix à la consommation. Il en est de même pour les indices désaisonnalisés: pour la France, le Royaume-Uni, l'Irlande et le Danemark sont repris les indices nationaux tandis que pour les autres pays la désaisonnalisation est calculée par l'OSCE.
Pour le Royaume-Uni et l'Irlande, les indices mensuels correspondent aux moyennes des ventes hebdomadaires.
3. Année de base des indices: L'année 1980, choisie par l'OSCE, n'est dans certains cas qu'une base arithmétique à laquelle sont ramenées les séries nationales. La base réelle, à laquelle se réfère la structure de l'univers, varie, en effet, de pays à pays.
4. Champ couvert: Les indices couvrent en principe l'ensemble du commerce de détail. Pour le Luxembourg, toutefois, les indices ne recouvrent que les ventes des grandes surfaces et les chaînes de magasins à prédominance alimentaire.
5. Chiffre d'affaires par groupe d'activité: Le présent bulletin publie une fois tous les trois mois (no. 1, 4, 7 et 10) des indices du volume (bruts et désaisonnalisés) des ventes des entreprises ayant comme activité principale la vente au détail d'un des trois groupes de produits suivants:

- alimentation, boissons, tabac (NACE 641/2)
- habillement, chaussures, maroquinerie (NACE 645-646)
- articles d'équipement du foyer (NACE 647 et 648/9)

Ces indices ne sont toutefois pas disponibles pour tous les pays. D'autre part, les indices ne couvrent parfois pas rigoureusement les ventes des trois groupes de produits tels qu'ils sont définis par la NACE. Les indices disponibles peuvent toutefois être considérés comme représentatifs de la tendance des ventes de chacun des trois groupes d'entreprises.

6. Indice EUR: L'indice communautaire est calculé sur base des données disponibles et, le cas échéant des estimations d'Eurostat. Il est obtenu en pondérant les indices nationaux par le volume des biens (habituellement vendus par le commerce de détail) consommés par les ménages en 1980. Les indices du Luxembourg sont pondérés par le volume des biens vendus en 1980 par les grandes surfaces et chaînes de magasins.
7. Les moyennes mobiles sur trois mois correspondent à la moyenne arithmétique simple de trois indices mensuels consécutifs. Pour le Royaume-Uni et l'Irlande, il s'agit de moyennes arithmétiques pondérées en fonction du nombre de semaines que compte chaque mois. Elles sont localisées sur le dernier mois de la période concernée.

B. Immatriculation de voitures particulières et commerciales

1. Voitures particulières et commerciales: Véhicule routier à moteur pour le transport de voyageurs pourvu de sièges pour 9 personnes au maximum, y compris le chauffeur. Sont également compris les voitures de louage et véhicules à usage mixte (destiné à transporter des marchandises en plus ou à la place de voyageurs).
2. Premières immatriculations: Correspondent au nombre de véhicules routiers immatriculés pour la première fois par le pays déclarant dans le courant de l'année de référence.
3. Indice EUR12: Les pondérations correspondent au nombre de voitures immatriculées durant l'année 1980 dans chacun des pays.
4. Désaisonnalisation: C'est l'OSCE qui procède à la désaisonnalisation des données. Compte tenu des variations très irrégulières que présentent les séries désaisonnalisées, des études sur leur composante saisonnière sont en cours à l'OSCE. Les graphiques ont été construits à partir des séries désaisonnalisées lissées par une moyenne arithmétique simple de trois indices mensuels consécutifs localisée, comme pour le commerce de détail, sur le dernier mois de la période concernée.

**Venta y suscripciones · Salg og abonnement · Verkauf und Abonnement · Πωλήσεις και συνδρομές
Sales and subscriptions · Vente et abonnements · Vendita e abbonamenti
Verkoop en abonnementen · Venda e assinaturas**

BELGIQUE/BELGIË

Moniteur belge/Belgisch Staatsblad
Rue de Louvain 40-42/Leuvensestraat 40-42
1000 Bruxelles/1000 Brussel
Tél. 512 00 26
CCP/Postrekening 000-2005502-27
Sous-dépôts/Agentschappen:

**Librairie européenne/
Europese Boekhandel**

Rue de la Loi 244/Wetstraat 244
1040 Bruxelles/1040 Brussel

CREDOC

Rue de la Montagne 34/Bergstraat 34
Bte 11/Bus 11
1000 Bruxelles/1000 Brussel

DANMARK

Schultz EF-publikationer

Møntergade 19
1116 København K
Tlf: (01) 14 11 95
Telecopier: (01) 32 75 11

BR DEUTSCHLAND

Bundesanzeiger Verlag

Breite Straße
Postfach 10 80 06
5000 Köln 1
Tel. (02 21) 20 29-0
Fernschreiber: ANZEIGER BONN 8 882 595
Telecopierer: 20 29 278

GREECE

G.C. Eleftheroudakis SA

International Bookstore
4 Nikis Street
105 63 Athens
Tel. 322 22 55
Telex 219410 ELEF

Sub-agent for Northern Greece:

Molho's Bookstore

The Business Bookshop
10 Tsimiski Street
Thessaloniki
Tel. 275 271
Telex 412885 LIMO

ESPAÑA

Boletín Oficial del Estado

Trafalgar 27
28010 Madrid
Tel. (91) 446 60 00

Mundi-Prensa Libros, S.A.

Castelló 37
28001 Madrid
Tel. (91) 431 33 99 (Libros)
431 32 22 (Suscripciones)
435 36 37 (Dirección)
Télex 49370-MPLI-E

FRANCE

Journal officiel
**Service des publications
des Communautés européennes**
26, rue Desaix
75727 Paris Cedex 15
Tél. (1) 45 78 61 39

IRELAND

Government Publications Sales Office

Sun Alliance House
Molesworth Street
Dublin 2
Tel. 71 03 09

or by post

Government Stationery Office

Publications Section

6th floor
Bishop Street
Dublin 8
Tel. 78 16 66

ITALIA

Licosa Spa

Via Lamarmora, 45
Casella postale 552
50 121 Firenze
Tel. 57 97 51
Telex 570466 LICOSA I
CCP 343 509

Subagenti:

Libreria scientifica Lucio de Biasio - AEIOU

Via Meravigli, 16
20 123 Milano
Tel. 80 76 79

Libreria Tassi

Via A. Farnese, 28
00 192 Roma
Tel. 31 05 90

Libreria giuridica

Via 12 Ottobre, 172/R
16 121 Genova
Tel. 59 56 93

**GRAND-DUCHÉ DE LUXEMBOURG
et autres pays/and other countries**

**Office des publications officielles
des Communautés européennes**

2, rue Mercier
L-2985 Luxembourg
Tél. 49 92 81
Télex PUBOF LU 1324 b
CCP 19190-81
CC bancaire BIL 8-109/6003/200

Abonnements/Subscriptions

Messageries Paul Kraus

11, rue Christophe Plantin
L-2339 Luxembourg
Tél. 49 98 888
Télex 25 15
CCP 49242-63

NEDERLAND

Staatsdrukkerij- en uitgeverijbedrijf

Christoffel Plantijnstraat
Postbus 20014
2500 EA 's-Gravenhage
Tel. (070) 78 98 80 (bestellingen)

PORTUGAL

**Imprensa Nacional
Casa da Moeda, E. P.**

Rua D. Francisco Manuel de Melo, 5
1092 Lisboa Codex
Tel. 69 34 14
Telex 15328 INCM

Distribuidora Livros Bertrand Lda.

Grupo Bertrand, SARL

Rua das Terras dos Vales, 4-A
Apart. 37
2700 Amadora CODEX
Tel. 493 90 50 - 494 87 88
Telex 15798 BERDIS

UNITED KINGDOM

HM Stationery Office

HMSO Publications Centre
51 Nine Elms Lane
London SW8 5DR
Tel. (01) 211 56 56

Sub-agent:

Alan Armstrong & Associates Ltd

72 Park Road
London NW1 4SH
Tel. (01) 723 39 02
Telex 297635 AAALTD G

UNITED STATES OF AMERICA

**European Community Information
Service**

2100 M Street, NW
Suite 707
Washington, DC 20037
Tel. (202) 862 9500

CANADA

Renouf Publishing Co., Ltd

61 Sparks Street
Ottawa
Ontario K1P 5R1
Tel. Toll Free 1 (800) 267 4164
Ottawa Region (613) 238 8985-6
Telex 053-4936

JAPAN

Kinokuniya Company Ltd

17-7 Shinjuku 3-Chome
Shinjuku-ku
Tokyo 160-91
Tel. (03) 354 0131

Journal Department

PO Box 55 Chitose
Tokyo 156
Tel. (03) 439 0124

Price (excluding VAT) in Luxembourg
 Prix publics au Luxembourg, TVA exclue

	ECU	BFR	FF	IRL	UKL	USD
Single copy Prix par numéro	2,40	100	16	1.80	1.70	2.80
Subscription Abonnement	18,50	800	129	14.40	12.80	22.50



OFICINA DE PUBLICACIONES OFICIALES DE LAS COMUNIDADES EUROPEAS
 KONTORET FOR DE EUROPÆISKE FÆLLESSKABERS OFFICIELLE PUBLIKATIONER
 AMT FÜR AMTLICHE VERÖFFENTLICHUNGEN DER EUROPÄISCHEN GEMEINSCHAFTEN
 ΥΠΗΡΕΣΙΑ ΕΠΙΣΗΜΩΝ ΕΚΔΟΣΕΩΝ ΤΩΝ ΕΥΡΩΠΑΪΚΩΝ ΚΟΙΝΟΤΗΤΩΝ
 OFFICE FOR OFFICIAL PUBLICATIONS OF THE EUROPEAN COMMUNITIES
 OFFICE DES PUBLICATIONS OFFICIELLES DES COMMUNAUTÉS EUROPÉENNES
 UFFICIO DELLE PUBBLICAZIONI UFFICIALI DELLE COMUNITÀ EUROPEE
 BUREAU VOOR OFFICIËLE PUBLIKATIES DER EUROPESE GEMEENSCHAPPEN
 SERVIÇO DAS PUBLICAÇÕES OFICIAIS DAS COMUNIDADES EUROPEIAS

ISSN 1010-1748