

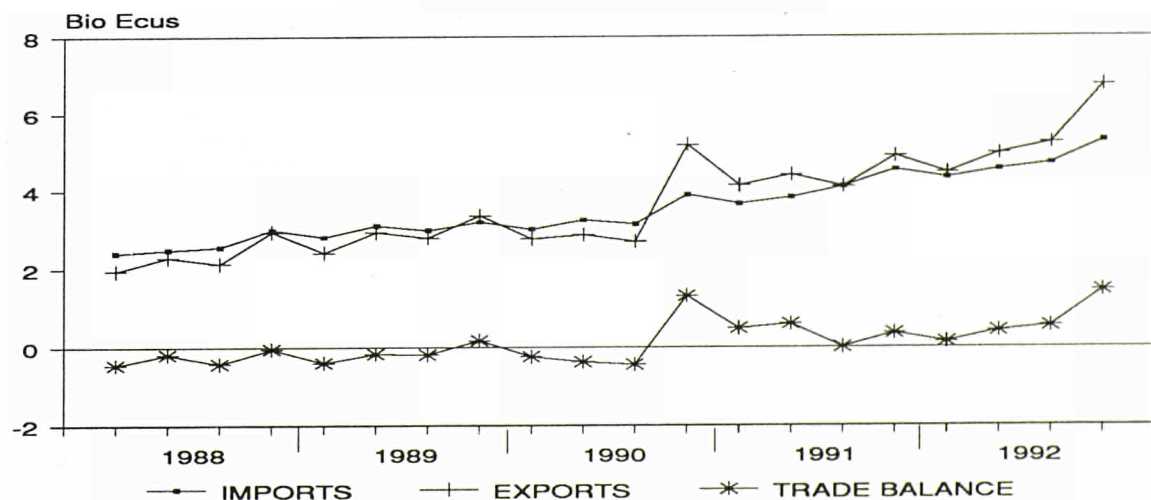
EUROPEAN COMMUNITY (EC) TRADE WITH BULGARIA, CZECHOSLOVAKIA, HUNGARY, POLAND AND ROMANIA (CEECs) (*) - Results for 1992 -

Part I: Summary

In 1992 the EC's trade surplus with CEECs went up to 2,5 billion ecus from 1,4 billion ecus in 1991. While EC imports from this group of countries increased by 17,3% to 18,9 billion ecus, EC exports to CEECs went up 22,2% to 21,4 billion ecus, reflecting a very dynamic trade between the two groups. The EC cover ratio (exports over imports) was 113. Germany was by far the main EC partner with CEECs, with 57,4% of total EC imports and 54% of total EC exports. Poland was the main CEECs partner with the EC (37,5% of total EC imports and 38% of total EC exports to this group of

countries). However, trade with Czechoslovakia experienced the largest increase: EC exports to this country increased by 64,1% between 1991 and 1992. Trade was mainly concentrated in manufactured products: 75,2% of total EC imports and 82,8% of total EC exports to CEECs. The main EC imports from these countries in 1992 were clothing and accessories, iron and steel and road vehicles, while the most important EC exports to CEECs in 1992 were road vehicles, textile yarn, fabrics and general industry machinery.

EC TRADE WITH CEECs



(*) Central and Eastern European Countries

Data source: Eurostat (COMEXT). SITC Rev 3 is in application from 1988

1 Billion ecus = 10⁹ ecus.

Manuscript completed on = 30.06.1993

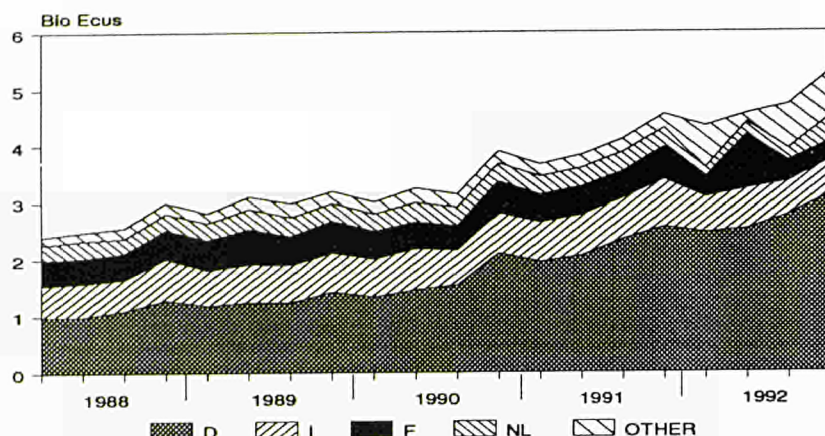
For further information please contact: M. BARREDO
Eurostat, L-2920 Luxembourg, tel. 4301-32149 Fax: 4301-34762

Price (excl. VAT) in Luxembourg: Subscription ECU 206

Catalogue number: CA-NO-93-005-EN-C

Part II: EC imports from CEECs

EC IMPORTS FROM CEECs BY EC PARTNERS



EC IMPORTS FROM CEECs BY EC SUPPLIERS

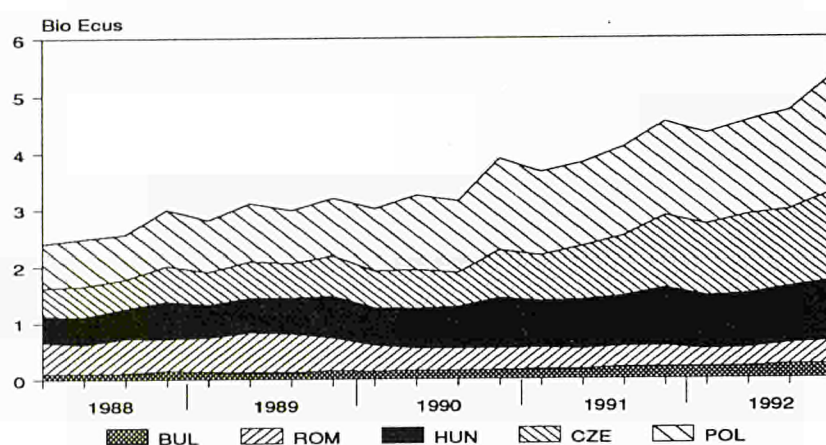


TABLE 1: EC IMPORTS FROM CEECs BY SITC SECTIONS.

PRODUCTS SITC Rev 3	1991	1992	1992	90/91	92/91	92/91
	01-12	01-12	10-12	01-12	01-12	10-12
	mio ecus			% variation		
TOTAL TRADE (0-9)	16117,4	18898,7	5301,5	21,4	17,3	16,7
Food, beverage tobacco (0+1)	2220,2	2043,5	602,8	13,7	-8,0	-16,5
Raw material non fuel (2+4)	1253,7	1456,5	337,3	13,5	16,2	-16,0
Fuels (3)	1031,8	753,6	238,8	-15,4	-27,0	-11,4
Manuf. products (5-8)	11231,7	14218,5	3984,1	28,8	26,6	30,5
Chemicals (5)	1504,8	1515,3	341,5	29,7	0,7	-8,6
Manuf. goods (6)	3828,9	4912,1	1270,8	20,4	28,3	20,4
Machinery transport eq.(7)	2318,3	3039,2	949,1	33,0	31,1	50,1
Miscellaneous goods (8)	3579,7	4751,9	1422,8	35,6	32,7	43,7
Other (9)	380,0	426,6	138,4	36,1	12,3	41,4
EXTRA-EC	493.990	487.730	124.344	7.0	-1,3	-0,8
CEECS/EXTRA EC (%)	3.3	3,9	4,3	-	-	-
Manuf./TOTAL (%)	69.7	75,2	75,2	-	-	-

by countries...

1. EC imports from CEECs went up 17,3% to 18,9 billion ecus between 1991 and 1992.

2. German imports from this group of countries increased by 22% to 10,8 billion ecus, representing 57,4% of total EC imports from CEECs in 1992.

3. Italy was the EC country which experienced the largest increase of its imports from CEECs in 1992 (23,6%).

4. Nearly 80% of total EC imports from the CEECs went to three countries in 1992: Germany, France and Italy.

5. EC imports from Poland went up 13,9% to 7,1 billion ecus between 1991 and 1992, and they represented 37,5% of total EC imports from CEECs.

6. EC imports from Czechoslovakia increased by 36,3% to 5,5 billion ecus (29,3% of total EC imports from this group of countries). EC imports from Hungary and Bulgaria went up 10,0% and 19,4% respectively, while EC imports from Romania decreased by 4,4% between 1991 and 1992.

by products...

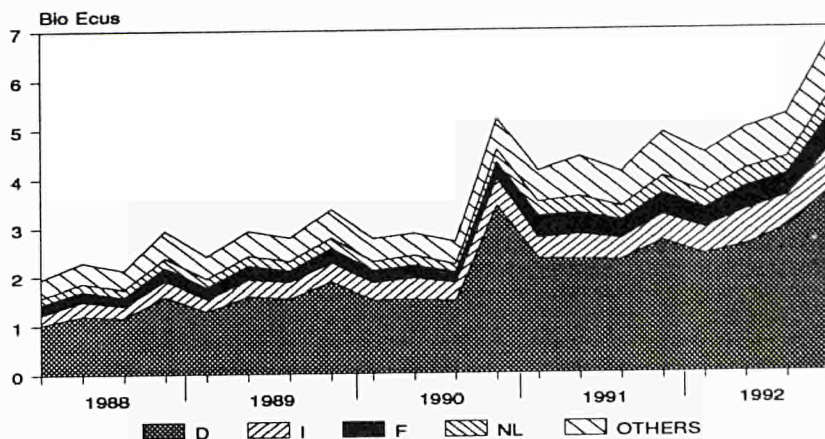
7. EC imports of manufactured products (SITC 5-8) from CEECs increased by 26,6% to 14,2 billion ecus between 1991 and 1992, representing 75,2% of total EC imports from this group. Miscellaneous goods (SITC 8) and machinery, transport equipment (SITC 7) experienced the largest increases.

8. EC imports of raw materials other than fuels (SITC 2+4) increased by 16,2% to 1,5 billion ecus, while imports of food, beverages and tobacco (SITC 0+1) went down 8,0% to 2 billion ecus between 1991 and 1992.

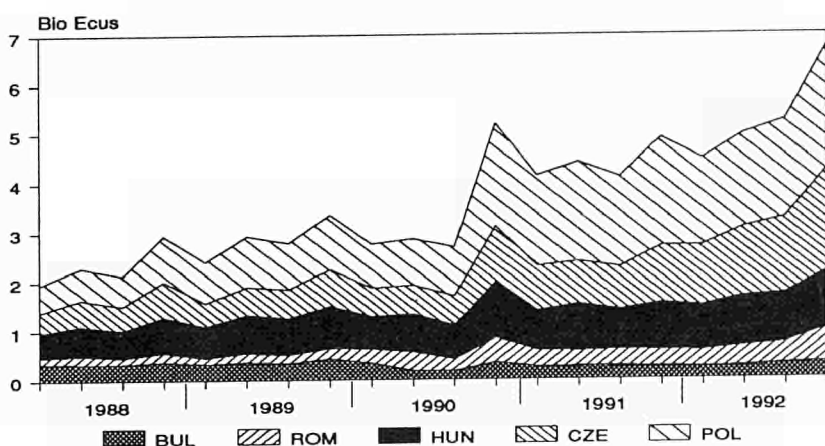
9. EC imports from CEECs represented 3,9% of total extra-EC imports in 1992.

Part III: EC exports to CEECs

EC EXPORTS TO CEECs BY EC SUPPLIERS



EC EXPORTS TO CEECs BY CEECs PARTNERS



by countries...

1. EC exports to CEECs went up 22,2% to 21,4 billion ecus between 1991 and 1992.

2. German exports to CEECs (over 54% of total EC exports to this group of countries) increased by 20,8% to 11,6 billion ecus.

3. The two EC countries which experienced the largest increases of their exports to CEECs in 1992 were United Kingdom (47,4%) and Italy (40,6%).

4. Exports from Denmark and Ireland to CEECs decreased by 18,3% and 1,5% respectively.

5. Poland and Czechoslovakia received 38% and 29,2% respectively of total EC exports to CEECs in 1992. While EC exports to Poland increased by 3,5% to 8,1 billion ecus, EC exports to Czechoslovakia went up 64,1% to 6,3 billion ecus between 1991 and 1992.

6. EC exports to Romania, Hungary and Bulgaria increased by 39,4%, 16,5% and 7,6% respectively.

TABLE 2: EC EXPORTS TO CEECs BY SITC SECTIONS.

PRODUCTS SITC Rev 3	1991	1992	1992	90/91	92/91	92/91
	01-12	01-12	10-12	01-12	01-12	10-12
	mio ecus			% variation		
TOTAL TRADE(0-9)	17542,1	21438,7	6744,8	29,8	22,2	37,7
Food, beverages tobacco (0+1)	1635,2	1743,4	529,9	39,5	6,6	34,1
Raw material non fuel (2+4)	542,8	627,1	166,4	9,9	15,5	38,4
Fuels (3)	489,8	688,3	252,6	81,7	40,5	98,4
Manuf. products (5-8)	14200,6	17745,5	5618,5	29,7	25,0	37,6
Chemicals (5)	2011,1	2477,7	710,7	14,1	23,2	44,3
Manuf. goods (6)	3045,3	4033,7	1256,7	27,8	32,5	43,8
Machinery transport eq. (7)	7155,0	8579,6	2839,6	32,3	19,9	34,6
Miscellaneous goods (8)	1989,2	2654,4	811,5	42,1	33,4	33,8
Other (9)	673,7	634,4	177,4	7,7	-5,8	1,9
EXTRA-EC	423.497	435.660	117.650	0,9	2,9	1,5
CEECs/EXTRA-EC (%)	4,1	4,9	5,7	-	-	-
MANUF./TOTAL(%)	80,9	82,8	83,3	-	-	-

by products...

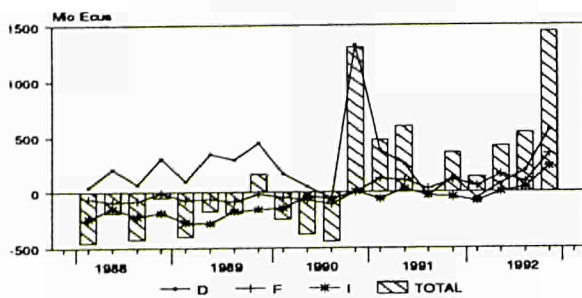
7. EC exports of manufactured products (SITC 5-8) to this group went up 25% to 17,7 billion ecus in 1992; they represented 82,8% of total EC exports to CEECs. Exports of miscellaneous goods (SITC 8) registered the largest increase (33,4%) among these manufactured products.

8. EC exports of raw materials other than fuels (SITC 2+4) increased by 15,5% to 0,6 billion ecus, while EC exports of food, beverages and tobacco (SITC 0+1) went up 6,6% to 1,7 billion ecus between 1991 and 1992.

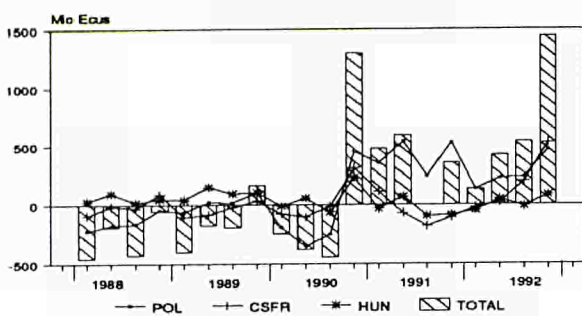
9. EC exports to CEECs represented 4,9% of total extra-EC exports in 1992.

Part IV: EC trade balance with CEECs and trade by products

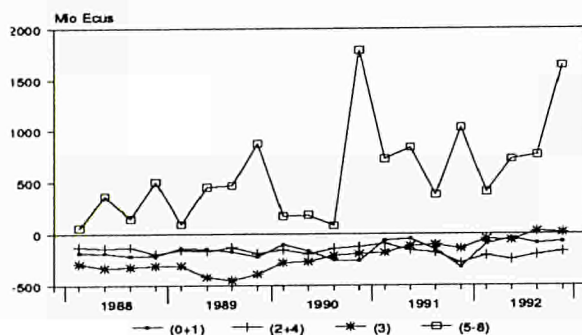
EC TRADE BALANCE WITH CEECs
EC PERSPECTIVE



EC TRADE BALANCE WITH CEECs
CEECs PERSPECTIVE



CEECs TRADE BALANCE BY SITC SECTIONS



1. EC's trade balance with CEECs showed an EC surplus of 2,5 billion ecus in 1992. In 1991 this surplus accounted for 1,4 billion ecus.

2. The EC countries which registered the largest surplus with CEECs in 1992 were Germany (0,8 billion ecus), France (0,7 billion ecus) and Netherlands (0,4 billion ecus).

3. The biggest deficit with CEECs among the EC countries were experienced by Spain (0,1 billion ecus) and Greece (0,03 billion ecus).

4. EC trade surplus with Poland was 1,1 billion ecus in 1992, while EC surplus with Czechoslovakia, Romania and Bulgaria were 0,7, 0,5 and 0,2 billion ecus respectively. EC trade with Hungary was rather balanced in 1992 (with an EC surplus of around 0,07 billion ecus).

5. EC trade with CEECs by SITC sections in 1992 registered an EC surplus in manufactured products (SITC 5-8) of 3,5 billion ecus. For raw materials other than fuels (SITC 2+4) and food, beverages and tobacco (SITC 0+1) the EC experienced deficits of around 0,8 and 0,3 billion ecus respectively.

6. When considering EC trade with CEECs by SITC product divisions, seven categories accounted for 41% of total EC imports from this group of countries in 1992. Clothing (SITC 84), iron and steel (SITC 67) and road vehicles (SITC 78) were the main EC imports from CEECs in 1992.

7. Seven SITC product divisions covered more than 45% of total EC exports to CEECs in 1992. The main EC exports were road vehicles, textile yarn, fabrics (SITC 65) and general industry machinery (SITC 74).

TABLE 3: EC TRADE WITH CEECs BY MAIN SITC DIVISIONS

SITC-2 digits	1992	92/91	1992 01-12		
PRODUCTS	01-12	01-12	Percentage share in		
IMPORTS	mio ecus	%Variation	Total extra-EC imp. by products	EC imp. from CEECs	Cumul
84 Clothing and accessories	2578,6	34,5	9,7	13,6	13,6
67 Iron and steel	1150,2	23,5	13,3	6,1	19,7
78 Road vehicles	877,2	84,5	3,5	4,6	24,4
82 Furniture, parts	874,0	24,0	24,7	4,6	29,0
69 Metal manufactures nes.	786,3	47,1	9,2	4,2	33,2
66 Non metal min. manuf.	757,0	23,0	9,3	4,0	37,2
68 Non ferrous metals	749,4	25,6	6,5	4,0	41,1
PRODUCTS	1992	92/91	1992 01-12		
EXPORTS	01-12	01-12	Percentage share in		
EXPORTS	mio ecus	%Variation	Total extra-EC exp. by products	EC exp. to CEECs	Cumul
78 Road vehicles	2036,1	21,8	5,5	9,5	9,5
65 Textile yarn, fabrics	1777,0	36,1	13,0	8,3	17,8
74 General industrial mach.	1652,1	27,0	6,0	7,7	25,5
72 Mach. for special ind.	1582,6	14,8	5,9	7,4	32,9
77 Electrical mach. nes	1147,1	46,4	4,6	5,4	38,2
89 Misc. manuf. goods	927,4	35,3	4,5	4,3	42,6
33 Oil products	647,7	52,8	6,9	3,0	45,6