

1993 □ 1

ISSN 1017-5792

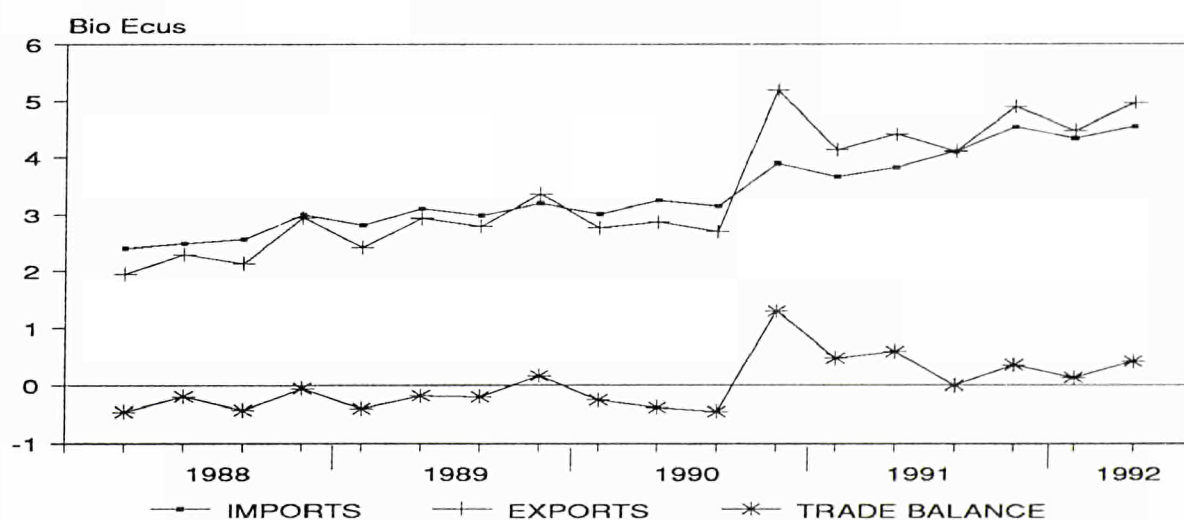
EUROPEAN COMMUNITY (EC) TRADE WITH BULGARIA, CZECHOSLOVAKIA, HUNGARY, POLAND AND ROMANIA (CEECs) (*) -Results from January to June 1992-

Part I: Summary

During the first six months of 1992 EC trade surplus with CEECs went down to 0,56 billion ecus from 1,1 billion ecus in the same period of 1991. EC trade with this group of countries has been growing strongly: while EC imports increased by 18,9% in the first half of 1992, when compared to the same period of 1991, EC exports to CEECs increased by 10,6%. As a result, the EC cover ratio (exports over imports) in the first six months of 1992 was 106. Germany is the main EC partner with CEECs, with 53% of total EC exports and 56% of total

EC imports. Poland is the principal CEECs partner of the EC (around 40% of EC imports and exports); however, trade with Czechoslovakia experienced the largest increase in the first half of 1992. Trade is largely concentrated in manufactured products: 75% of total EC imports and 84% of total EC exports to this group of countries. While 3,7% of total extra-EC imports come from CEECs, EC exports to this group of countries represented 4,6% of total extra-EC exports in the first six months of 1992.

EC TRADE WITH CEECs



(*) Central and Eastern European Countries

Data source: Eurostat (COMEXT). SITC Rev 3 is in application from 1988

1 Billion = 10^9 ecus.

Manuscript completed on = 23.12.1992

For further information please contact: E. BARREDO
Eurostat, L-2920 Luxembourg, tel. 4301-32149 Fax: 4301-34762

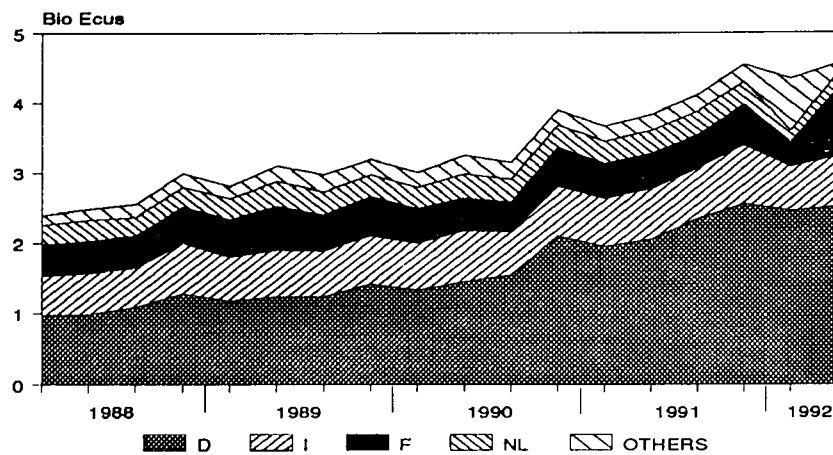
Price (excl. VAT) in Luxembourg: Subscription ECU 206

Catalogue number: CA-NO-93-001-EN-C

Part II: EC imports from CEECs

...by countries

EC IMPORTS FROM CEECs BY EC PARTNERS



EC IMPORTS FROM CEECs BY CEECs SUPPLIERS

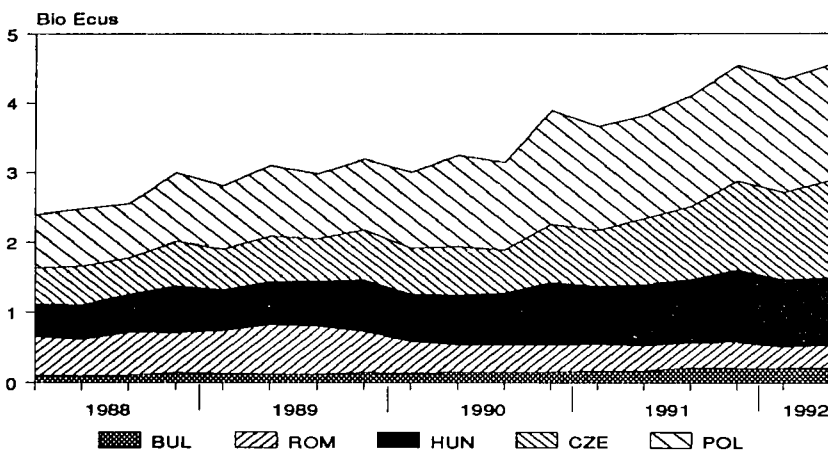


TABLE 1: EC IMPORTS FROM CEECs BY SITC SECTIONS.

PRODUCTS SITC Rev 3	1991	1992	1992	90/91	92/91	92/91
	01-12	01-06	04-06	01-12	01-06	04-06
	Mio ecus			%var		
TOTAL TRADE (0-9)	16117,4	8885,0	4552,2	21,4	18,9	19,2
Food, beverage tobacco (0+1)	2220,2	948,8	453,5	13,7	-1,4	-3,2
Raw Material non fuel (2+4)	1253,7	768,0	395,8	13,5	41,5	29,3
Fuels (3)	1031,8	334,6	176,0	-15,4	-35,6	-20,7
Manuf. products (5-8)	11231,7	6654,0	3434,2	28,8	26,3	25,8
Chemicals (5)	1504,8	819,2	398,8	29,7	4,7	2,0
Manuf. goods (6)	3828,9	2410,9	1292,7	20,4	34,5	30,6
Machinery transport eq.(7)	2318,3	1382,1	745,2	33,0	25,9	37,4
Miscellaneous goods (8)	3579,7	2041,8	997,5	35,6	27,9	23,6
Other (9)	380,0	179,5	92,7	36,1	-0,5	0,5
EXTRA-EC	493.990	248.588	123.331	7.0	0.9	-2.5
CEECs/EXTRA EC (%)	3.3	3.6	3.7	-	-	-
Manuf./TOTAL(%)	69.7	74.9	75.4	-	-	-

1. EC imports from CEECs went up 18,9% to nearly 8,9 billion ecus in the first six months of 1992 when compared to the same period of 1991.

2. German imports from CEECs were up 24% to nearly 5 billion ecus, representing 56% of total EC imports from CEECs.

3. The two EC countries which experienced the largest increases of their imports from CEECs during the first half of 1992 were Italy and Spain (34,3% and 24,5% respectively).

4. The EC countries which decreased their imports from CEECs between the two first halves of 1991 and 1992 were Netherlands (-13,0%), Greece (-10,1%), Ireland (-7,8%) and Portugal (-3,6%).

5. Poland supplied 37,0% of total EC imports from CEECs in the first six months of 1992. Imports from this country went up 11,1% when compared to the same period of 1991.

6. EC imports from Czechoslovakia increased by 51,8% in the first half of 1992, while EC imports from Hungary and Bulgaria went up 12,5% and 21,2% respectively.

7. EC imports from Romania experienced a decrease of 13,8% between the two first halves of 1991 and 1992. In particular EC imports of fuel (SITC 3) just collapsed: they went down from 134 million ecus to 5 million ecus.

... by products

8. EC imports of fuel (SITC 3) from CEECs kept the decreasing trend showed in 1991, and they went down 35,6% in the first half of 1992.

9. EC imports of manufactured products (SITC 5-8) increased by 26,3% to 6,6 billion ecus, representing 75% of total EC imports from CEECs. Manufactured goods (SITC 6) was the group which registered the largest increase (34,5%).

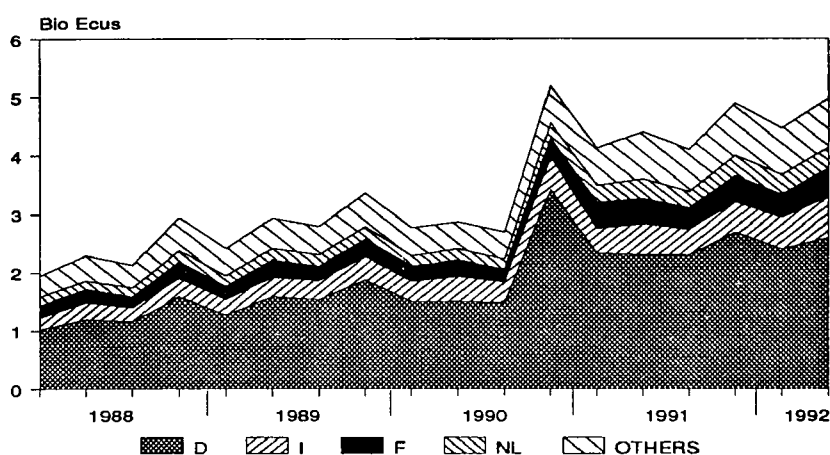
10. EC imports of raw materials other than fuels (SITC 2+4) went up 41,5% during the first six months of 1992 when compared to the same period of 1991, while imports of food, beverages and tobacco (SITC 0+1) went down 1,4% during the same period.

11. EC imports from CEECs represented 3,7% of total extra-EC imports in the first half of 1992.

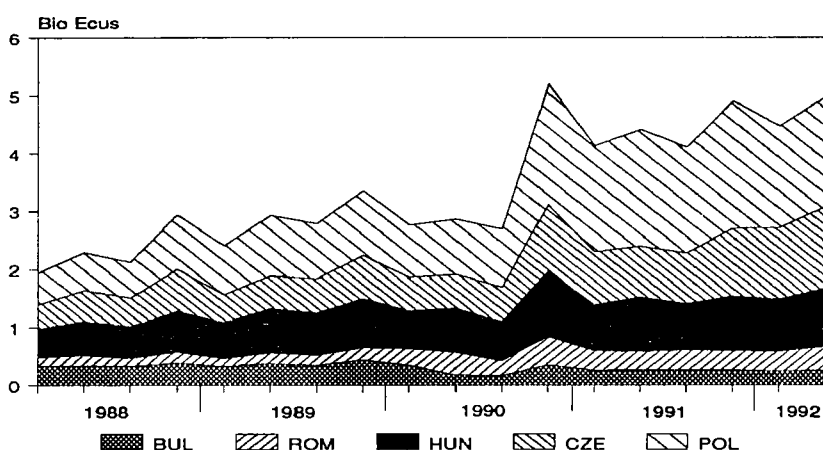
Part III: EC exports to CEECs

... by countries

EC EXPORTS TO CEECs BY EC SUPPLIERS



EC EXPORTS TO CEECs BY CEECs PARTNERS



1. EC total exports to CEECs went up 10,6% to 9,4 billion ecus in the first half of 1992, when compared to the same period of 1991.

2. German exports (over 53% of total EC exports to CEECs) increased by 7,6% to nearly 5 billion ecus in the first six months of 1992.

3. The two EC countries which experienced the biggest increases in their exports in the first half of 1992 were United Kingdom (40,4%) and Italy (30,5%).

4. Exports from Portugal, Ireland and Denmark to CEECs decreased by 22,5%, 12,0% and 9,4% respectively.

5. Poland concentrated 39% of total EC exports to CEECs in the first half of 1992. However, EC exports to this country decreased by 5,2% during this period when compared to the same half of 1991.

6. EC exports to Czechoslovakia have registered the largest increase in the first six months of 1992: they increased by 48,1% to 2,6 billion ecus.

7. EC exports to Hungary and Romania increased by 10,1% and 14% respectively, while exports to Bulgaria went down 5,1% in the first half of 1992.

TABLE 2: EC EXPORTS TO CEECs BY SITC SECTIONS.

PRODUCTS SITC Rev 3	1991	1992	1992	90/91	92/91	92/91
	01-12	01-06	04-06	01-12	01-06	04-06
	mio ecus			%var		
TOTAL TRADE(0-9)	17542,1	9441,3	4971,9	29,8	10,6	12,8
Food, beverages tobacco (0+1)	1635,2	811,3	412,2	39,5	-5,2	-2,5
Raw material non fuel (2+4)	542,8	310,6	148,5	9,9	6,0	0,1
Fuels (3)	489,8	227,5	117,1	81,7	2,0	9,7
Manuf. products (5-8)	14200,6	7783,0	4157,6	29,7	14,0	16,6
Chemicals (5)	2011,1	1167,1	608,7	14,1	10,1	16,8
Manuf. goods (6)	3045,3	1780,0	995,7	27,8	23,0	24,1
Machinery transport eq. (7)	7155,0	3641,8	1912,1	32,3	7,2	10,0
Miscellaneous goods (8)	1989,2	1194,2	641,1	42,1	29,0	27,3
Other (9)	673,7	308,8	136,4	7,7	-9,1	-17,7
EXTRA-EC	423.497	212.420	107.077	2.2	4.7	2.8
CEECS/EXTRA-EC	4.1	4.4	4.6	-	-	-
MANUF./TOTAL(%)	80,9	82,4	83,6	-	-	-

... by products

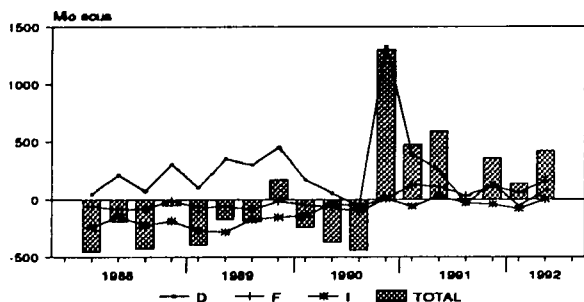
8. EC exports of manufactured products (SITC 5-8) to CEECs went up 14% to 7,8 billion ecus in the first six months of 1992 when compared to the same period of 1991. They represented nearly 84% of total EC exports to CEECs.

9. EC exports of raw materials other than fuels (SITC 2+4) increased by 6,0% between the two first halves of 1991 and 1992, while EC exports of food, beverages and tobacco (SITC 0+1) went down 5,2% during the same period.

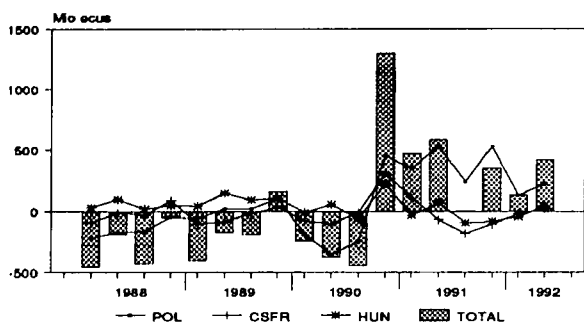
10. EC exports to CEECs represented 4,6% of total extra-EC exports in the first six months of 1992.

Part IV: EC trade balance with CEECs and trade by products

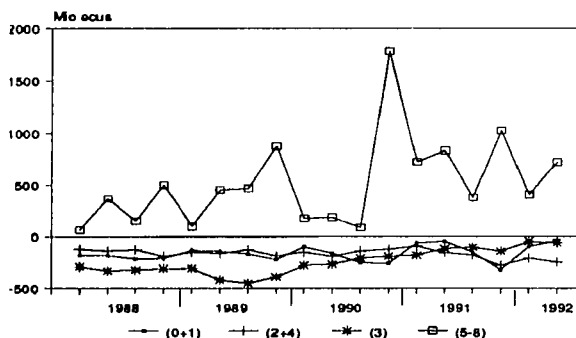
EC TRADE BALANCE WITH CEECs
EC PERSPECTIVE



EC TRADE BALANCE WITH CEECs
CEECs PERSPECTIVE



CEECs TRADE BALANCE BY SITC SECTIONS



1. EC trade balance with CEECs in the first six months of 1992 showed an EC surplus of 0,56 billion ecus; in the same period of 1991 the surplus was over 1,1 billion ecus.

2. The EC countries which recorded the largest surplus with CEECs were Netherlands (0,31 billion ecus) and France (0,21 billion ecus).

3. Italy and Spain showed the biggest deficits with CEECs in the first six months of 1992 (0,08 and 0,06 billion ecus respectively).

4. EC trade surplus with Poland was 0,36 billion ecus in the first half of 1992, while EC surplus with Romania was 0,12 billion ecus. EC trade with Czechoslovakia and Hungary was rather balanced during the same period.

5. The structure of EC trade by SITC sections in the first six months of 1992 kept a very similar pattern as compared to that in 1991, with manufactured products reflecting an EC surplus (based mostly on the performance of machines and transport equipment (SITC 7)), with the rest of the aggregates showing an EC deficit with CEECs.

6. When considering EC trade with CEECs by Combined Nomenclature (CN) chapters, 7 products accounted for more than 40% of total EC imports in the first six months of 1992. Clothing (CN 62) and iron and steel (CN 72) were the main imports from CEECs during this period.

7. EC exports by CN are somewhat more concentrated than imports: 7 chapters covered more than 48% of total EC exports to CEECs. Reactors, boilers and machinery (CN 84) and vehicles other than railway (CN 87) were the main EC exports to this group of countries.

TABLE 3: EC TRADE WITH CEECs BY MAIN CN PRODUCT CHAPTERS.

CN-2 digits	1992	92/91	1992 01-06		
			PRODUCTS	Percentage share in	
PRODUCTS	01-06	01-06			
IMPORTS	mio ecus	%Var	Total EC imp. by products	EC imp. from CEECs	Cumul
62 Clothing	827,0	24,9	6,5	9,3	9,3
72 Iron and steel	601,0	32,1	3,8	6,8	16,1
84 Reactors, Boilers, mach.	508,5	3,6	0,6	5,7	21,8
94 Furniture	471,9	25,4	5,6	5,3	27,1
73 Art. iron and steel	429,9	58,9	4,1	4,8	31,9
87 Vehicles non railway	411,9	98,9	0,6	4,6	36,5
85 Elec. mach. sound., TV	375,2	24,5	0,8	4,2	40,7
PRODUCTS	1992	92/91	1992 01-06		
PRODUCTS	01-06	01-06	Percentage share in		
EXPORTS	mio ecus	%Var	Total EC exp. by products	EC exp. to CEECs	Cumul
84 Reactors, boilers, mach.	1934,6	11,9	2,2	20,5	20,5
87 Vehicles non railway	857,3	10,7	1,2	9,1	29,6
85 Elect. mach., sound, TV	707,2	21,4	1,7	7,5	37,1
39 Plastics and articles	331,4	19,3	1,4	3,5	40,6
90 Precision instruments	300,7	8,2	1,8	3,2	43,8
27 Mineral fuels, oils	227,5	1,9	1,3	2,4	46,2
55 Staples fibres	205,4	30,2	5,4	2,2	48,4