

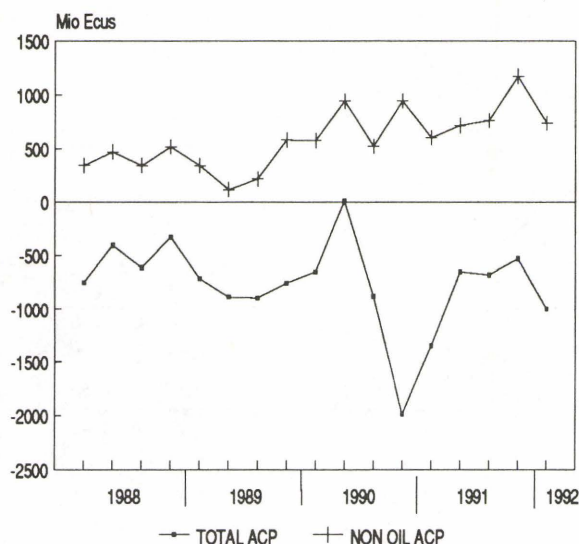
1992 7

ISSN 1017-5792

EUROPEAN COMMUNITY (EC) TRADE WITH AFRICAN, CARIBBEAN AND PACIFIC COUNTRIES (ACP) -Results until March 1992-

PART I. EC TRADE BALANCE VIS-A-VIS THE ACP CLASS 2 COUNTRIES.

EC TRADE BALANCE WITH ACP .



1. EC's trade deficit with the ACP countries was around 1 billion ecus in the first quarter of 1992. This represents a reduction of nearly 340 million ecus when compared to the same period of 1991.

2. EC's surplus on non-oil trade was 717 million ecus in the first three months of 1992, up from 533 million ecus in the same period of 1991.

3. EC exports amounted to 79,5% of EC imports from ACP during this period. When considering non-oil trade this ratio was 122,6%.

4. EC's trade balance with CLASS 2 countries in the first quarter of 1992 experienced a sharp reduction in its deficit when compared to the same period of last year, due to a significant increase of EC exports to this group of countries. Non-oil surplus rose from 5.235 million ecus in the first three months of 1991 to 8.567 in the same period of 1992.

5. The cover ratio (exports over imports) for CLASS 2 countries was 98% in the first quarter of 1992.

TABLE I. EC TRADE BALANCE VIS-A-VIS THE ACP AND CLASS 2 COUNTRIES ⁽²⁾ (Mio ECU)⁽¹⁾

	TOTAL TRADE				NON-OIL TRADE			
	1990	1991	1991 01-03	1992 01-03	1990	1991	1991 01-03	1992 01-03
EC imports from the ACP ⁽³⁾	20 125,1	19 269,9	5 025,4	4 974,1	13 543,7	12 622,0	3 021,8	3 165,7
EC exports to the ACP ⁽³⁾	16 649,4	16 007,1	3 666,0	3 953,6	16 307,3	15 663,4	3 554,5	3 882,6
EC trade balance with the ACP ⁽³⁾	-3 475,6	-3 262,9	-1 359,4	-1 020,5	2 763,6	3 041,3	532,6	716,9
Export / import ratio %	82,7	83,1	73,0	79,5	120,4	124,1	117,6	122,6
EC imports from CLASS 2	143 947,9	150 318,1	36 755,7	36 825,4	99 453,3	105 887,5	25 603,7	27 220,4
EC exports to CLASS 2	134 424,9	142 672,2	31 492,5	36 230,2	132 405,2	140 454,9	30 838,6	35 787,2
EC trade balance with CLASS 2	-9 523,0	-7 645,9	-5 263,2	-595,3	32 951,9	34 567,4	5 234,9	8 566,7
Export / import ratio %	93,4	94,9	85,7	98,4	133,1	132,6	120,4	131,5

⁽¹⁾ External Trade Statistics (Imports CIF, Exports FOB). Source EUROSTAT. SITC Rev.3 is in application from 1988.

⁽²⁾ Developing countries.

⁽³⁾ Namibia from 1991.

This report was elaborated with the assistance of the DG VIII.

Manuscript completed on = 24.08.1992

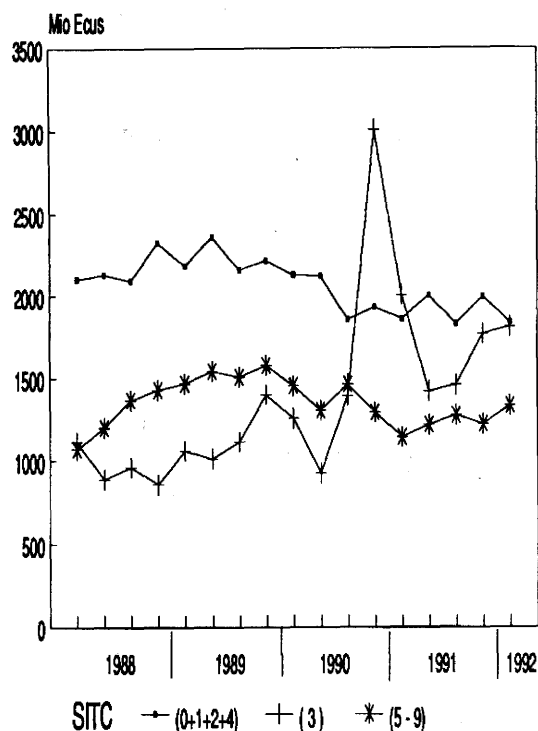
For further information please contact: E. BARREDO
Eurostat, L-2920 Luxembourg, tel. 4301-2149 Fax: 4301 4762

Price (excl. VAT) in Luxembourg: Subscription ECU 192

Catalogue number: CA-NO-92-007-EN-C

PART II. EC IMPORTS FROM THE ACP AND CLASS 2 COUNTRIES. ⁽¹⁾

EC IMPORTS FROM ACP.



1. EC imports from ACP countries increased by 5,1% in volume and experienced a decrease of 1,0% in value in the first quarter of 1992, when compared to the same period of 1991.

2. This difference is mainly due to the evolution of fuel imports (SITC 3), which rose 9,1% in volume but fell 9,7% in value. Imports of fuel represented nearly 37% of total imports from ACP. In fact, non-oil imports increased by 4,5% during this period.

3. EC imports from CLASS 2 (developing countries) were up 4,1% in volume. However, they increased only by 0,2% in value.

4. EC imports of food, beverages and tobacco (SITC 0+1) from ACP countries were up 1,4% to 1.200 million ecus in the first quarter of 1992, reflecting a 1,6% decline in ecu import prices.

5. EC imports of raw materials other than fuels (SITC 2+4) from ACP went down 4,1% in the first three months of 1992 when compared to the same period of 1991. For CLASS 2 countries these imports were 1% bigger.

6. EC imports of manufactured products (SITC 5-8) from ACP experienced an increase of 14,7% in value and 17,6% in volume. Imports of these products represented 23% of the total imports from ACP in the first quarter of 1992.

TABLE II. EC IMPORTS FROM THE ACP AND CLASS 2 COUNTRIES ⁽¹⁾

TRADE BY PRODUCTS (SITC)	VALUE							VOLUME		
	1989	1990	1991	1992	90/89	91/90	92/91	91/90	92/91	
	Mio ECU	Mio ECU	Mio ECU	Mio ECU	01-03	% var.	% var.	% var.	01-03	
ACP (69) ⁽³⁾										
- Total (value 0-9) (volume 0-8)	19 597,4	20 125,1	19 269,9	4 974,1		2,7	-4,2	-1,0	-4,5	5,1
- Fuel (3)	4 583,7	6 581,4	6 647,9	1 808,4		43,6	1,0	-9,7	16,6	9,1
- Food, beverages, tobacco (0+1)	5 321,5	4 838,3	5 004,3	1 201,9		-9,1	3,4	1,4	-0,9	-3,0
- Food and live animals (0)	4 981,2	4 468,6	4 521,1	1 056,3		-10,3	1,2	0,2	-2,6	-3,2
- Beverages and tobacco (1)	340,3	369,8	483,2	145,6		8,7	30,7	10,9	23,3	-1,9
- Raw materials non fuels (2+4)	3 600,0	3 193,6	2 742,8	651,9		-11,3	-14,1	-4,1	-17,5	-3,4
- Manufactured products (5-8)	5 569,3	4 946,2	4 264,5	1 163,8		-11,2	-13,8	14,7	-22,8	17,6
- Other products (9)	523,0	565,6	610,5	148,2		8,2	7,9	4,1		
CLASS 2 COUNTRIES ⁽²⁾										
- Total (value 0-9) (volume 0-8)	137 112,8	143 947,9	150 318,1	36 825,4		5,0	5,3	0,2	7,1	4,1
- Fuel (3)	38 852,9	44 494,6	44 430,6	9 605,0		14,5	-0,1	-13,9	10,7	-5,5
- Food, beverages, tobacco (0+1)	21 002,3	20 744,7	21 880,5	5 411,3		-1,2	5,5	5,7	2,9	1,6
- Food and live animals (0)	19 828,7	19 447,4	20 199,6	5 026,5		-1,9	3,9	6,5	2,2	2,7
- Beverages and tobacco (1)	1 173,6	1 297,3	1 680,8	384,8		10,5	29,6	-3,8	14,8	-13,5
- Raw materials non fuels (2+4)	13 478,9	12 735,3	11 557,8	2 536,6		-5,5	-9,2	1,0	-7,1	-1,7
- Manufactured products (5-8)	60 103,8	62 470,2	68 987,8	18 193,1		3,9	10,4	6,5	8,4	3,9
- Other products (9)	3 674,8	3 503,1	3 461,4	1 079,5		-4,7	-1,2	22,0		
MEMORANDUM ITEM										
- EXTRA-EC	446 717,0	462 720,1	493 990,0	125 257,1		3,6	6,8	4,7		
- ACP / Extra-EC (in %)	4,4	4,3	3,9	4,0						
- ACP / CLASS 2 countries (in %)	14,3	14,0	12,8	13,5						
- CLASS 2 countries / Extra-EC (in %)	30,7	31,1	30,4	29,4						

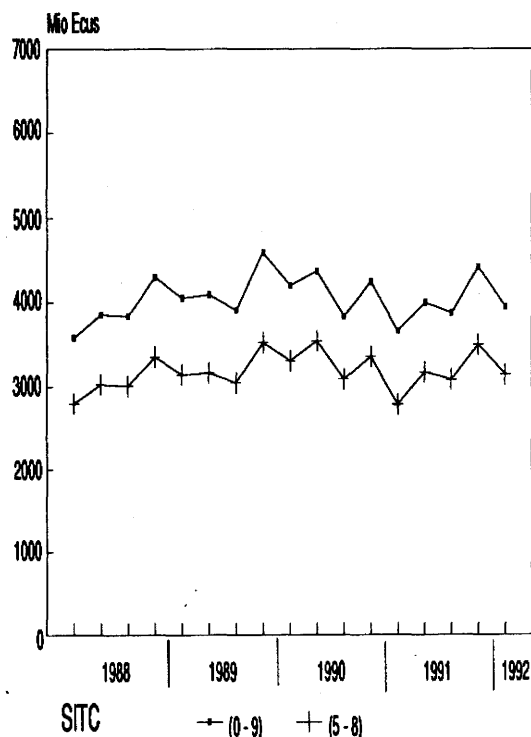
⁽¹⁾ External Trade Statistics (Imports CIF, Exports FOB). Source EUROSTAT. SITC Rev.3 is in application from 1988.

⁽²⁾ Developing countries.

⁽³⁾ Namibia from 1991.

PART III. EC EXPORTS TO THE ACP AND CLASS 2 COUNTRIES. ⁽¹⁾

EC EXPORTS TO ACP.



1. EC exports to ACP went up 4,6% in volume and 7,8% in value in the first quarter of 1992 when compared to the same period of 1991.

2. EC exports to the ACP represented around 4% of total extra-EC exports and 11% of the EC exports destined to developing countries.

3. EC exports to CLASS 2 countries experienced significant increases both in volume and value (11% and 15% respectively).

4. Manufactured products (SITC 5-8) accounted for 80% of EC exports to ACP countries and 83% to the CLASS 2 countries in the first three months of 1992. EC exports of these products to the ACP countries were up 12,6% in value and 8,4% in volume.

5. EC exports of machines and transport equipment (SITC 7), which represented nearly 55% of total exports of manufactured products to the ACP, increased 16% during the first quarter of 1992 when compared to the same period of 1991.

6. EC exports of food, beverages and tobacco (SITC 0+1) to the ACP fell by 4,9% in volume. However, these imports were down only 0,4% in value terms, due to the performance of ecu export prices.

TABLE III. EC EXPORTS TO THE ACP AND CLASS 2 COUNTRIES ⁽¹⁾

TRADE BY PRODUCTS (SITC)	VALUE							VOLUME	
	1989	1990	1991	1992	90/89	91/90	92/91	91/90	92/91
	Mio ECU	Mio ECU	Mio ECU	Mio ECU	% var.	% var.	% var.	% var.	% var.
ACP (69) ⁽³⁾									
- Total (Value 0-9) (Volume 0-8)	16 627,3	16 649,4	16 007,1	3 953,6	0,1	-3,9	7,8	-13,4	4,6
- Fuel (3)	419,0	342,2	343,7	71,0	-18,3	0,5	-36,4	-3,6	-38,5
- Food, beverages, tobacco (0+1)	2 367,9	2 187,9	2 200,7	536,7	-7,6	0,6	-0,4	2,0	-4,9
- Food and live animals (0)	2 026,0	1 855,9	1 854,5	443,5	-8,4	-0,1	-3,1	6,2	-7,5
- Beverages and tobacco (1)	341,9	332,0	346,3	93,2	-2,9	4,3	14,8	-18,7	8,1
- Raw materials non fuels (2+4)	310,2	318,2	330,6	86,5	2,6	3,9	13,3	-2,2	5,6
- Manufactured products (5-8)	12 854,6	13 290,0	12 579,1	3 147,6	3,4	-5,3	12,6	-16,7	8,4
- Other products (9)	675,6	511,1	553,0	111,8	-24,4	8,2	-22,7		
CLASS 2 COUNTRIES ⁽²⁾									
- Total (Value 0-9) (Volume 0-8)	131 197,2	134 424,9	142 672,2	36 230,2	2,5	6,1	15,0	4,6	11,0
- Fuel (3)	1 777,7	2 019,7	2 217,3	443,0	13,6	9,8	-32,3	5,8	-24,9
- Food, beverages, tobacco (0+1)	13 948,0	13 212,2	13 220,7	3 304,4	-5,3	0,1	8,3	4,1	2,2
- Food and live animals (0)	11 781,7	10 715,6	10 290,1	2 557,5	-9,0	-4,0	4,6	2,4	0,2
- Beverages and tobacco (1)	2 166,3	2 496,6	2 930,6	747,0	15,2	17,4	23,0	8,8	9,6
- Raw materials non fuels (2+4)	2 624,4	2 499,0	2 712,3	700,2	-4,8	8,5	13,2	7,7	11,6
- Manufactured products (5-8)	103 016,0	108 791,0	116 725,7	30 015,3	5,6	7,3	17,8	4,4	13,2
- Other products (9)	9 831,1	7 902,9	7 796,2	1 767,3	-19,6	-1,4	4,3		
MEMORANDUM ITEM									
- EXTRA-EC	413 010,4	419 813,7	423 497,5	105 345,8	1,6	0,9	6,7		
- ACP / Extra-EC (in %)	4,0	4,0	3,8	3,8					
- ACP / Class 2 countries (in %)	12,7	12,4	11,2	10,9					
- Class 2 countries / Extra-EC (in %)	31,8	32,0	33,7	34,4					

⁽¹⁾ External Trade Statistics (Imports CIF, Exports FOB). Source EUROSTAT. SITC Rev.3 is in application from 1988.

⁽²⁾ Developing countries.

⁽³⁾ Namibia from 1991.

PART IV. EC-ACP TRADE BY PARTNER COUNTRIES. (Mio ECU)⁽¹⁾

1. By groups of countries, the EC experienced the biggest deficit in the first quarter of 1992 with Central Africa (550 million ecus) and West Africa (364 million ecus), but kept a surplus with East North Africa (205 million ecus).

2. The individual countries with which the EC maintained considerable deficits were the following: Nigeria (503 million ecus), Côte d'Ivoire (178) and Zaire (159). The biggest surplus were kept with Sudan (116 million ecus), Liberia (97) and Benin (42).

EC TRADE BALANCE WITH ACP BY PARTNERS

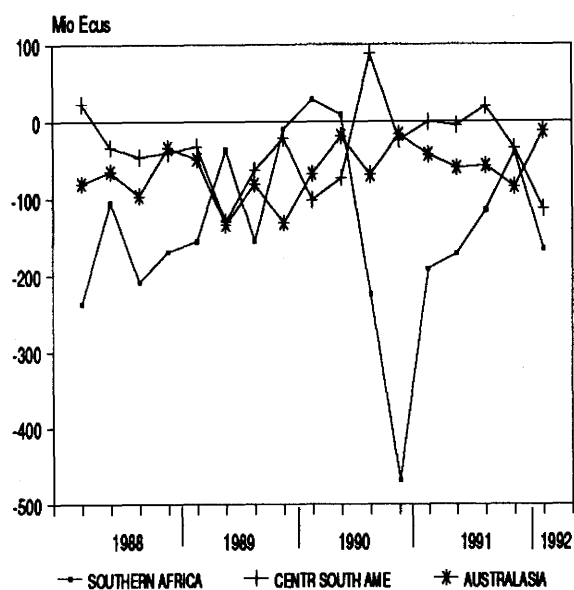
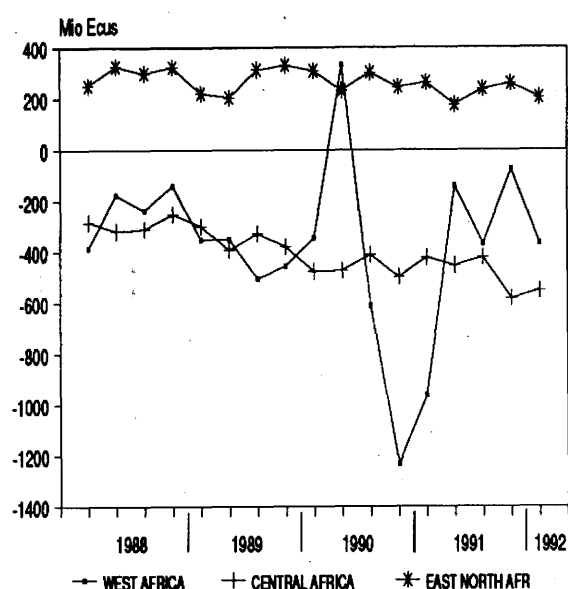


TABLE IV. EC - ACP TRADE BY PARTNER COUNTRIES (Mio ECU)⁽¹⁾

ACP ⁽²⁾		1990			1991			1992 01-03		
CODES	PARTNER COUNTRIES	IMPORT	EXPORT	BALANCE	IMPORT	EXPORT	BALANCE	IMPORT	EXPORT	BALANCE
WEST AFRICA										
284	Benin	43,4	166,4	123,0	38,7	203,7	164,9	11,8	54,3	42,5
236	Burkina Faso	77,0	189,3	112,3	73,7	194,8	121,0	20,1	41,7	21,6
247	Cape Verde	8,8	86,0	77,1	4,1	80,2	76,1	1,0	20,1	19,1
244	Chad	57,9	79,3	21,4	50,3	86,0	35,8	13,4	27,0	13,5
272	Côte d'Ivoire	1 676,7	831,6	-845,0	1 616,8	867,6	-749,2	397,3	219,6	-177,7
252	Gambia	77,6	81,0	3,4	93,6	95,5	1,9	29,0	28,6	-0,5
276	Ghana	729,6	500,7	-228,9	717,2	540,1	-177,1	142,4	128,8	-13,6
260	Guinea	305,7	251,3	-54,3	308,4	255,6	-52,7	59,5	61,6	2,1
257	Guinea Bissau	15,3	53,4	38,0	6,5	45,6	39,1	0,7	7,9	7,2
268	Liberia	702,3	1 008,0	305,7	249,3	470,7	221,5	90,8	188,3	97,4
232	Mali	78,1	213,8	135,7	61,0	180,6	119,6	20,8	56,1	35,3
228	Mauritania	238,7	221,5	-17,2	255,2	213,5	-41,7	48,2	46,5	-1,7
240	Niger	181,9	146,7	-35,2	182,1	136,4	-45,8	29,4	30,6	1,2
288	Nigeria	4 386,3	2 501,5	-1 884,8	4 563,1	2 925,7	-1 637,4	1 272,8	769,4	-503,4
248	Senegal	410,9	683,8	273,0	381,8	644,1	262,3	65,9	143,0	77,1
264	Sierra Leone	127,1	90,3	-36,7	169,0	79,6	-89,3	50,2	17,8	-32,5
280	Togo	111,2	330,3	219,1	105,5	306,8	201,3	19,7	67,7	48,0
CENTRAL AFRICA										
302	Cameroon	1 379,0	736,3	-642,7	1 158,6	613,7	-544,9	303,8	153,7	-150,1
306	Central African Rep.	104,0	88,8	-15,2	90,9	76,1	-14,7	18,8	14,6	-4,2
318	Congo	601,8	350,1	-251,6	547,1	336,2	-210,9	184,7	116,7	-68,0
310	Equatorial Guinea	38,1	38,4	0,3	31,2	29,1	-2,1	9,1	6,1	-3,0
314	Gabon	1 095,0	545,0	-550,0	1 226,9	638,1	-588,8	335,4	166,9	-168,5
311	Sao Tome and Principe	2,8	21,1	18,3	3,0	18,9	15,9	0,9	4,1	3,3
322	Zaire	1 142,3	731,7	-410,5	963,3	443,3	-520,1	229,4	70,0	-159,4

TABLE IV. EC - ACP TRADE BY PARTNER COUNTRIES (Mio ECU) ⁽¹⁾

ACP ⁽²⁾		1990			1991			1992 01-03		
CODES	PARTNER COUNTRIES	IMPORT	EXPORT	BALANCE	IMPORT	EXPORT	BALANCE	IMPORT	EXPORT	BALANCE
EAST AND NORTH AFRICA										
328	Burundi	74,6	89,5	14,8	70,7	84,3	13,6	19,1	19,9	0,8
338	Djibouti	27,8	134,0	106,2	37,4	159,4	122,0	9,1	40,6	31,5
334	Ethiopia	128,7	414,0	285,3	119,6	297,6	178,0	44,1	81,2	37,1
346	Kenya	519,9	797,1	277,2	565,1	738,6	173,5	142,3	146,9	4,6
324	Rwanda	78,9	92,8	13,9	106,9	100,9	-6,0	17,3	21,9	4,6
342	Somalia	46,7	145,2	98,5	16,7	42,9	26,1	3,5	2,5	-1,0
224	Sudan	160,2	339,1	178,9	103,4	408,9	305,5	15,5	131,8	116,3
352	Tanzania	177,1	400,5	223,4	179,7	369,8	190,1	45,1	85,8	40,7
350	Uganda	131,2	152,8	21,6	130,8	135,0	4,2	35,5	22,9	-12,6
378	Zambia	365,5	239,9	-125,6	255,4	180,1	-75,2	60,7	43,5	-17,2
SOUTHERN AFRICA										
330	Angola	1 091,7	842,7	-249,0	832,3	942,9	110,6	231,7	258,8	27,1
391	Botswana	74,0	78,8	4,8	82,2	77,7	-4,4	10,2	14,8	4,7
375	Comoros	13,7	30,9	17,1	13,1	44,6	31,5	4,0	5,9	1,9
395	Lesotho	8,4	18,0	9,5	20,1	44,3	24,2	6,7	9,8	3,1
370	Madagascar	156,2	259,6	103,4	167,8	165,6	-2,2	34,6	45,3	10,6
386	Malawi	133,9	115,9	-17,9	183,0	118,8	-64,2	61,0	28,8	-32,2
373	Mauritius	755,8	391,5	-364,3	780,2	364,4	-415,8	210,4	88,7	-121,6
366	Mozambique	63,6	258,2	194,6	66,6	221,2	154,6	14,9	47,3	32,5
389	Namibia	-	-	-	135,4	70,2	-65,3	32,7	12,6	-20,1
355	Seychelles and dep.	53,4	55,6	2,2	52,3	40,7	-11,5	9,5	9,0	-0,5
393	Swaziland	127,5	19,3	-108,2	126,3	15,3	-111,0	25,2	2,1	-23,1
382	Zimbabwe	576,6	335,9	-240,7	643,6	479,6	-164,0	136,8	88,9	-47,9
CENTRAL AND SOUTH AMERICA⁽³⁾										
459	Antigua and Barbuda	24,1	42,5	18,4	12,8	59,4	46,6	0,8	7,1	6,2
453	Bahamas	213,6	306,9	93,3	215,8	262,1	46,3	42,3	21,5	-20,8
469	Barbados	37,3	83,8	46,4	32,7	78,6	45,8	2,0	13,1	11,1
421	Belize	34,0	33,3	-0,8	33,3	34,6	1,2	13,6	5,8	-7,8
460	Dominica	36,3	23,9	-12,4	39,8	29,1	-10,6	8,9	6,7	-2,3
456	Dominican Republic	117,0	216,1	99,0	119,8	238,4	118,6	39,4	49,1	9,7
473	Grenada	11,2	15,8	4,6	10,3	16,1	5,7	2,0	2,9	0,9
488	Guyana	118,5	45,5	-73,0	119,3	53,7	-65,6	40,4	11,1	-29,3
452	Heiti	35,1	62,2	27,2	27,5	49,2	21,7	6,1	13,2	7,1
464	Jamaica	277,8	171,8	-106,0	285,9	138,6	-147,3	66,4	34,1	-32,3
449	St Christopher & Nevis	6,4	12,3	5,9	9,3	11,1	1,8	0,0	3,2	3,2
465	St Lucia	84,4	36,5	-48,0	72,3	43,8	-28,5	19,1	10,3	-8,7
467	St Vincent	62,9	30,1	-32,8	48,6	41,9	-6,7	28,2	7,9	-20,3
492	Surinam	183,0	93,8	-89,2	130,9	92,9	-38,0	32,2	18,3	-13,9
472	Trinidad and Tobago	177,9	139,1	-38,8	174,5	164,0	-10,5	53,7	37,7	-16,1
AUSTRALASIA, OCEANIA AND OTHER⁽⁴⁾										
815	Fiji	92,7	29,4	-63,3	120,0	23,7	-96,3	24,3	7,2	-17,1
812	Kiribati	1,6	1,4	-0,2	1,2	1,0	-0,3	0,0	0,6	0,5
801	Papua New Guinea	224,8	91,5	-133,3	198,5	51,6	-147,0	27,8	34,8	7,0
806	Solomon Islands	15,0	4,0	-11,0	19,0	4,5	-14,5	5,3	0,7	-4,6
817	Tonga	0,3	2,4	2,0	0,6	1,9	1,3	0,2	0,2	-0,0
807	Tuvalu	0,1	0,9	0,8	0,2	0,6	0,5	0,0	0,1	0,1
816	Vanuatu	11,9	44,3	32,4	11,3	21,4	10,0	3,3	4,5	1,3
819	Western Samoa	2,1	4,2	2,1	0,3	4,0	3,7	0,0	0,6	0,6

⁽¹⁾ External Trade Statistics (imports CIF, Exports FOB).

⁽²⁾ Geonomenclature EUROSTAT.

⁽³⁾ CARIBBEAN ACP.

⁽⁴⁾ PACIFIC ACP.

PART V. EC-ACP TRADE BY MAIN PRODUCTS.

1. This four products covered nearly half of the total EC imports from ACP in the first quarter of 1992: crude petroleum, non industrial diamonds, cocoa beans and coffee, indicating an important degree of concentration.

2. Imports of crude petroleum experienced an increased of 9,0% in volume. However, due to a reduction of import prices expressed in ecus of nearly 18%, imports in value went down 9,2% when compared to the same quarter of 1991. Imports of this products represented nearly 36% of total imports from ACP during this period.

3. EC imports of non industrial diamonds increased by 121% in the first three months of 1992. Nearly one quarter of the total EC imports of this product comes from the ACP countries. Cocoa beans (4,2% of total imports from ACP), coffee (3,8%) and raw cane sugar

(3,5%) were, after crude petroleum and non industrial diamonds, the most important products imported by the EC from the ACP countries in the first quarter of 1992.

4. Only 6 out of the 20 products selected experienced an increase in value when compared with the same quarter of last year; the most important were the following: non industrial diamonds (121%), raw cane sugar (27,8%) and bananas (17%). Cathodes and bars of refined copper experienced the largest decrease.

5. The products which suffered the largest reduction in their prices expressed in ecus during the first quarter of 1992 were the following: crude petroleum (-18,2%), unwrought aluminium (-16,9%) and cathodes of refined copper (-13,3%). For tobacco stripped, prices in ecus went up by 11,4%; however, EC imports from the ACP of this product in volume experienced a reduction of nearly 14%.

TABLE V. EC IMPORTS FROM ACP BY MAIN PRODUCTS ⁽¹⁾

ACP (69) ⁽⁵⁾		1992		92/91		1992 01-03			
		01-03		01-03		PERCENTAGE SHARE IN			
				PERCENTAGE		TOTAL EC IMPORTS		EC IMP. FROM ACP	
CODES ⁽²⁾	PRODUCTS	Value ⁽³⁾	Quantity ⁽⁴⁾	Value	Quantity	Value	Quantity	Value	CUMUL. Value
270900	Crude petroleum	1 770,4	16 472,4	-9,2	9,0	14,9	14,1	35,8	35,8
710231	Non ind. diamonds	261,5	0,0	121,3		23,4		5,3	41,1
180100	Cocoa beans	206,3	195,7	-19,7	-22,1	79,4	79,6	4,2	45,3
090111	Coffee	187,6	178,7	-10,5	-5,3	30,1	35,3	3,8	49,1
170111	Raw cane sugar	170,8	349,1	27,8	25,2	78,4	77,1	3,5	52,5
080300	Fresh bananas	103,0	168,0	16,8	10,3	18,7	14,8	2,1	54,6
440334/5	Tropical wood	84,1	315,4	-4,1	-0,3	98,4	98,7	1,7	56,3
760110	Unwrought aluminium	83,3	75,6	-12,5	4,4	12,3	12,3	1,7	58,0
240120	Tobacco stripped	83,0	21,3	-2,5	-13,9	20,9	23,2	1,7	59,7
710812	Gold unwrought	73,7	0,0	-17,1	-18,2	3,3	3,8	1,5	61,2
740319	Ref. copper unwrought	73,7	42,1	5,1	10,2	38,4	38,6	1,5	62,6
520100	Cotton non carded	69,7	54,8	-2,8	6,2	20,8	20,3	1,4	64,1
710210	Diamonds unsorted	61,4	0,0	-15,7		18,2		1,2	65,3
440399	Other wood in the rough	56,8	221,9	-10,4	-12,8	33,5	19,9	1,1	66,4
440721/2	Tropical wood sawn	48,8	105,5	0,2	5,1	23,0	27,3	1,0	67,4
090240	Black tea	47,7	35,7	-9,4	-2,1	50,7	56,1	1,0	68,4
260111	Non aggl. iron ores	46,4	2 257,2	2,4	-1,7	6,4	6,7	0,9	69,3
160414	Tunas, skipjack, bonito	32,4	15,5	-5,3	-12,8	28,8	30,0	0,7	70,0
284410	Natural uranium	29,1	0,7	-19,4	-6,1	47,0	32,8	0,6	70,6
740311	Cathodes ref. copper	27,7	16,0	-63,3	-60,1	4,2	4,2	0,6	71,1
281820	Aluminium oxide	25,4	147,3	-30,3	-19,5	19,3	23,6	0,5	71,7
440799	Other wood sawn	23,2	47,8	-12,7	-9,4	16,2	15,4	0,5	72,1
740200	Unref. copper	20,2	11,9	-29,3	-28,3	18,0	18,2	0,4	72,5
740312	Bars ref. copper	7,7	4,4	-65,0	-62,3	18,0	18,0	0,2	72,7

⁽¹⁾ External Trade Statistics (Imports CIF, Exports FOB).

⁽²⁾ Source: EUROSTAT (Comext). Combined nomenclature.

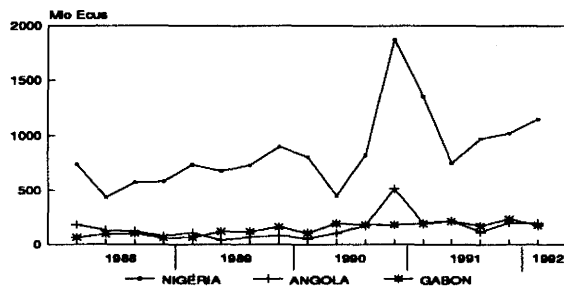
⁽³⁾ Value in Mio ECU.

⁽⁴⁾ Quantity in thousand tonnes.

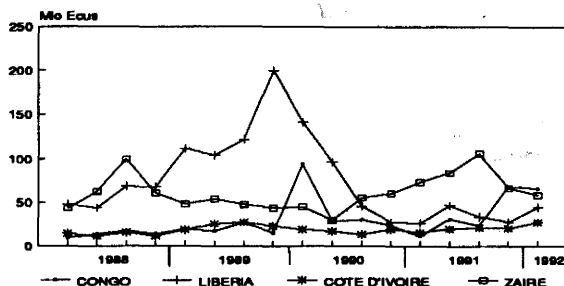
⁽⁵⁾ Namibia from 1991.

**PART VI. EC QUARTELY IMPORTS FROM ACP. A SELECTION OF 10 MOST IMPORTANT PRODUCTS
BROKEN DOWN BY MAJOR SUPPLIERS.**

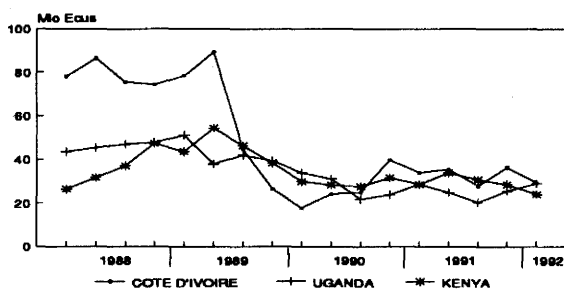
CRUDE PETROLEUM
CN- 2709



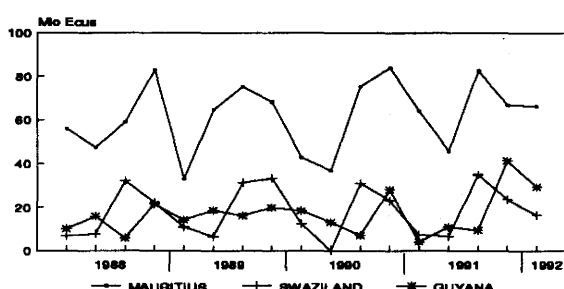
DIAMONDS
CN- 7102



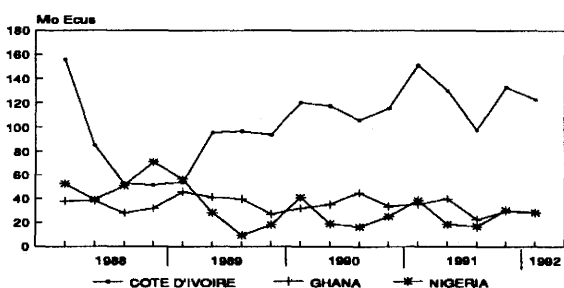
COFFEE
CN- 090111



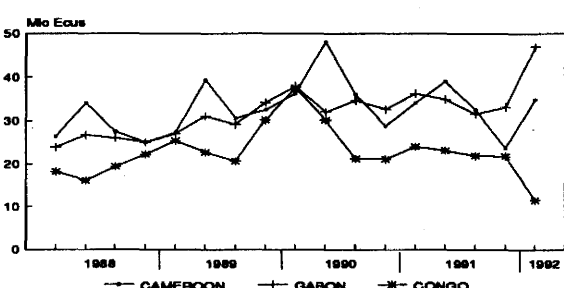
RAW CANE SUGAR
CN- 170111



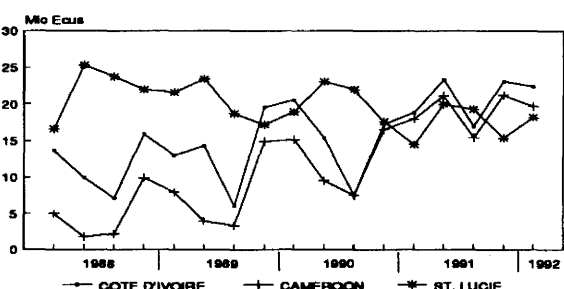
COCOA BEANS
CN- 180100



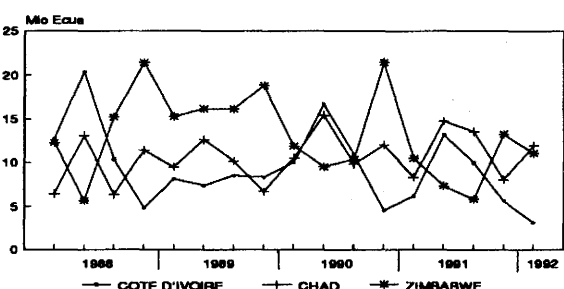
UNWROUGHT WOOD
CN- 4403



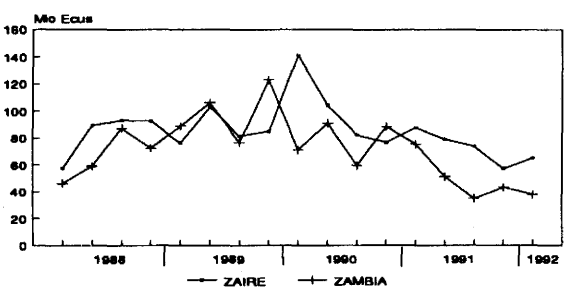
FRESH BANANAS
CN- 08030010



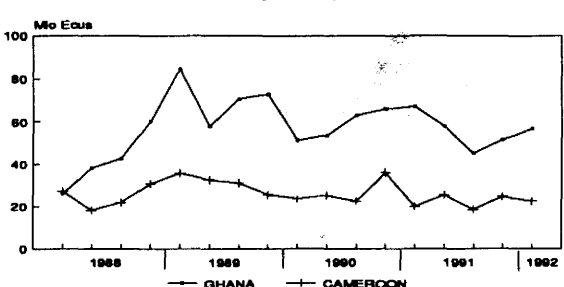
COTTON NON CARDED
CN- 520100



REFINED COPPER
CN- 7403

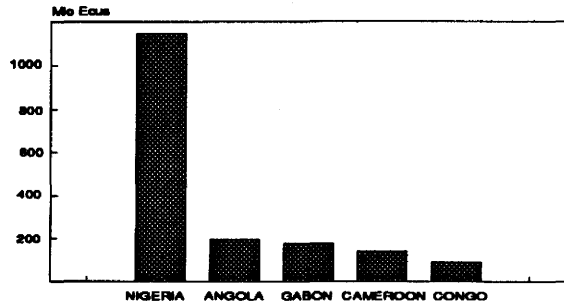


UNWROUGHT ALUMINIUM
CN- 7601

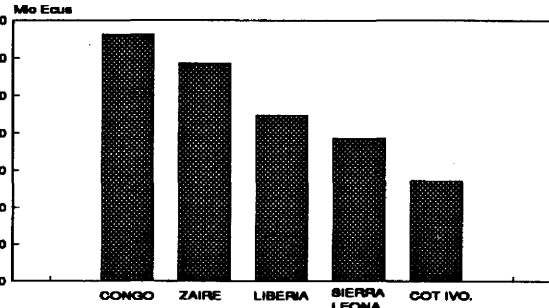


PART VII. EC-IMPORTS FROM ACP: JANUARY- MARCH 1992. A SELECTION OF 10 MOST IMPORTANT PRODUCTS BROKEN DOWN BY MAJOR SUPPLIERS.

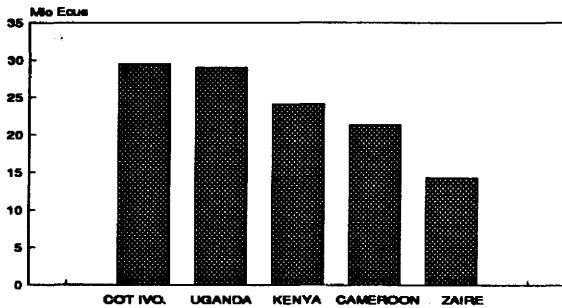
CRUDE PETROLEUM
CN- 2709



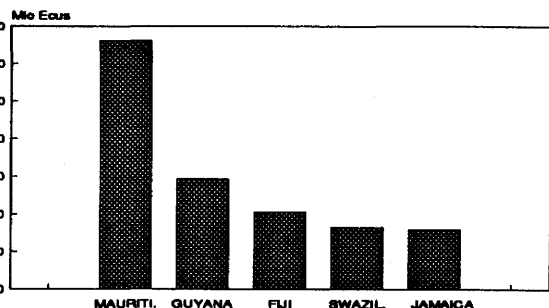
DIAMONDS
CN- 7102



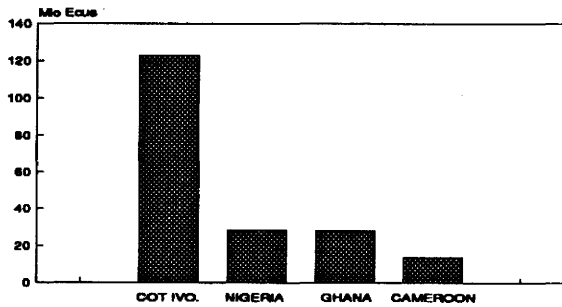
COFFEE
CN- 090111



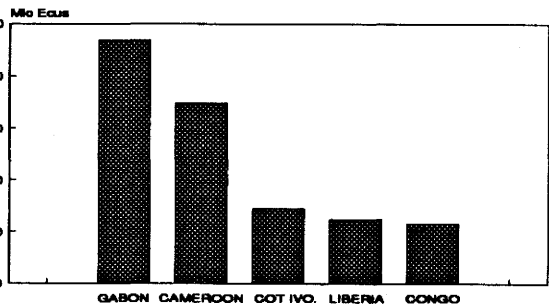
RAW CANE SUGAR
CN- 170111



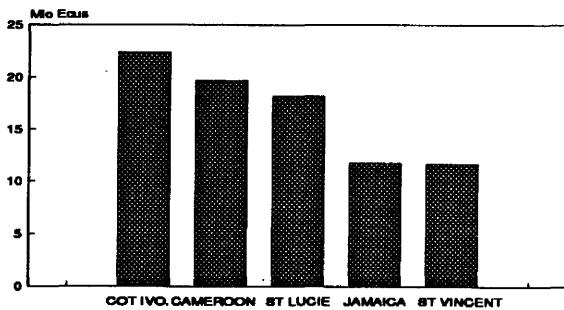
COCOA BEANS
CN- 180100



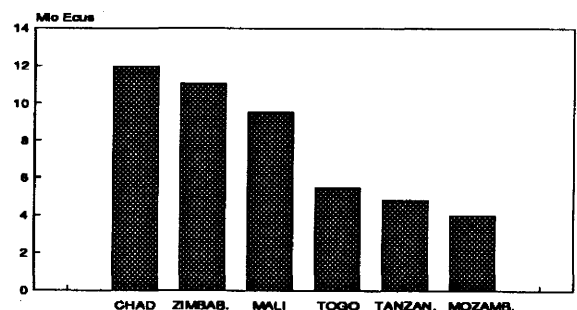
UNWROUGHT WOOD
CN- 4403



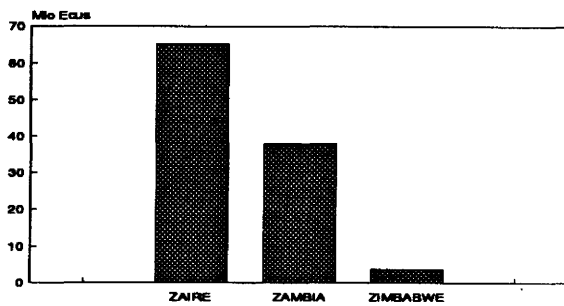
BANANAS
CN- 08030010



COTTON NON CARDED
CN- 520100



REFINED COPPER
CN- 7403



UNWROUGHT ALUMINIUM
CN- 7601

