

1990 □ 1

Trade of the European Community with Eastern Europe

This report gives a summary of the trade of the EC and its Member States with the countries of Eastern Europe i.e. the Soviet Union, the German Democratic Republic, Poland, Czechoslovakia, Hungary, Romania, Bulgaria and Albania.

It should be noted that the foreign trade of the EC does not integrate the trade between FRG and GDR considered as inter-German trade (the information shown here originates from publications of the Statistisches Bundesamt).

The share in extra-EC trade represented by the above countries is quite small at 6% for 1988 (in comparison EFTA 25%). The trade balances of the EC with these countries have a tendency to be in deficit, with the exception of Hungary and Bulgaria. Trade with Albania is at a very low level.

On consignment from the Soviet Union, the EC imports fuels and raw materials above all (1988:62%), whereas manufactured goods dominate from the other countries (1988:65%). Community imports of foodstuffs have a certain importance only from Hungary (1988:23%, other countries 5%).

The main EC exports to all these countries are machinery and transport equipment (1988:34%), chemicals (1988:17%) and other manufactured goods (1988:31%).

Manuscript completed on = 26.2.1990

Statistical Office of the European Communities, L-2920 Luxembourg, tel. 4301-3220

Price (excl. VAT) in Luxembourg: Subscription ECU 145

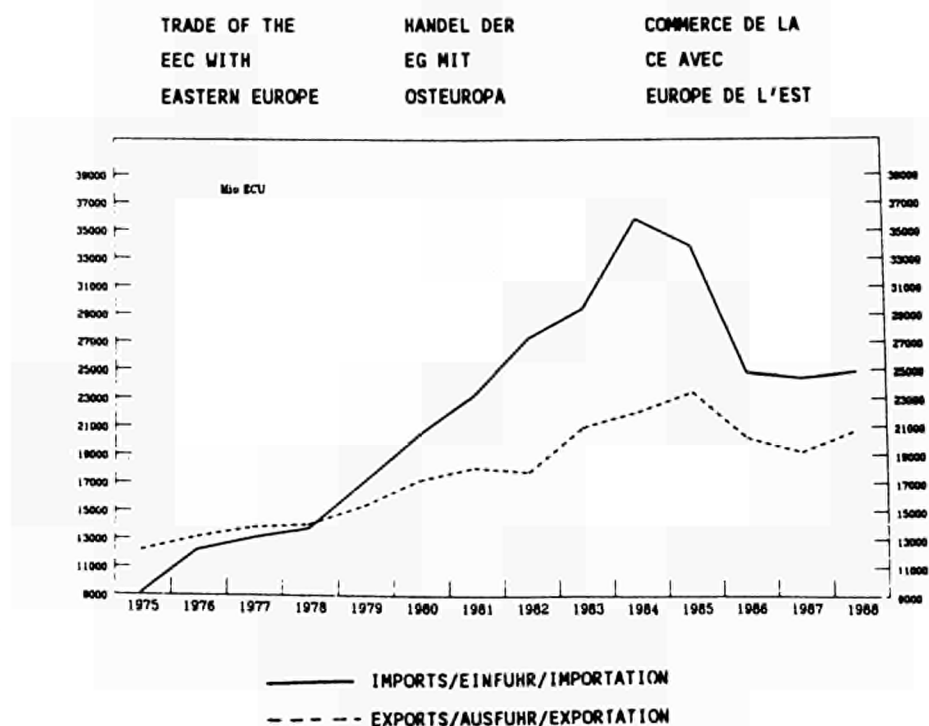
Catalogue number: CA-NO-90-001-EN-C

The general trend in trade is upward, with certain more pronounced variations. After a period of strong growth the imports of fuels on consignment from the Soviet Union saw a large fall in value in 1985 and 1986 (the price of petrol and exchange rate of the dollar). The exports of the EC to the Soviet Union, as for most of the other countries, developed in a similar way to the trend in imports (state trading countries). An exception was Romania, where imports were heavily reduced from 1981.

During the course of time inter-German trade has shown a continuous increase. The trade is largely in balance. The FRG imports above all manufactured articles and consumer goods, and exports mainly manufactured articles and investment goods.

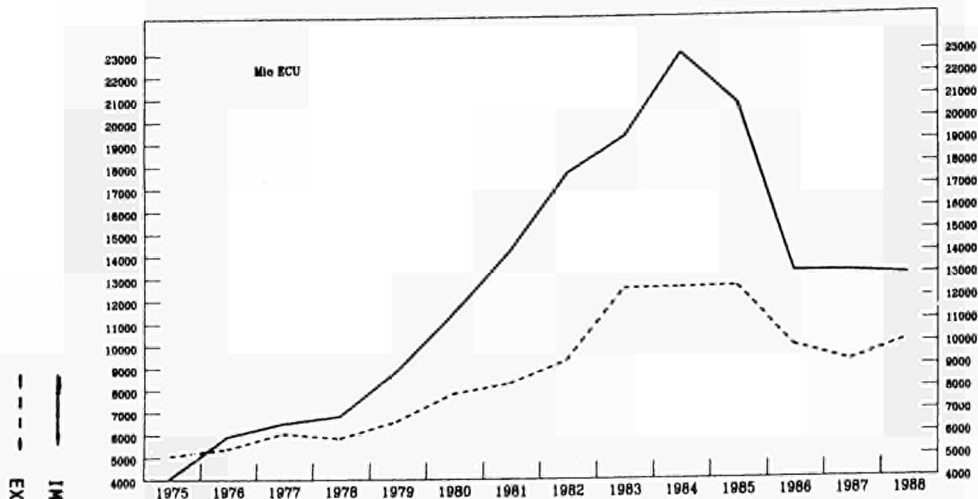
Among the Member States of the Community, the Federal Republic of Germany is by far the leading trade partner with Eastern Europe. This is true for most of the countries except Romania, where Italy is most important. The Federal Republic represents 38% of the total trade volume followed by Italy (17%), France (15%) and the United Kingdom (9%).

On the following pages can be found graphics showing the evolution of imports and exports of the EC with each of the countries of Eastern Europe, and also the total. Inter-German trade can also be found for the German Democratic Republic. Seven tables can then be found with the trade broken down by product groups. A final table gives the distribution of trade by Member State of the Community for 1988 as well as the inter-German trade. As column headings the ISO abbreviations are used.

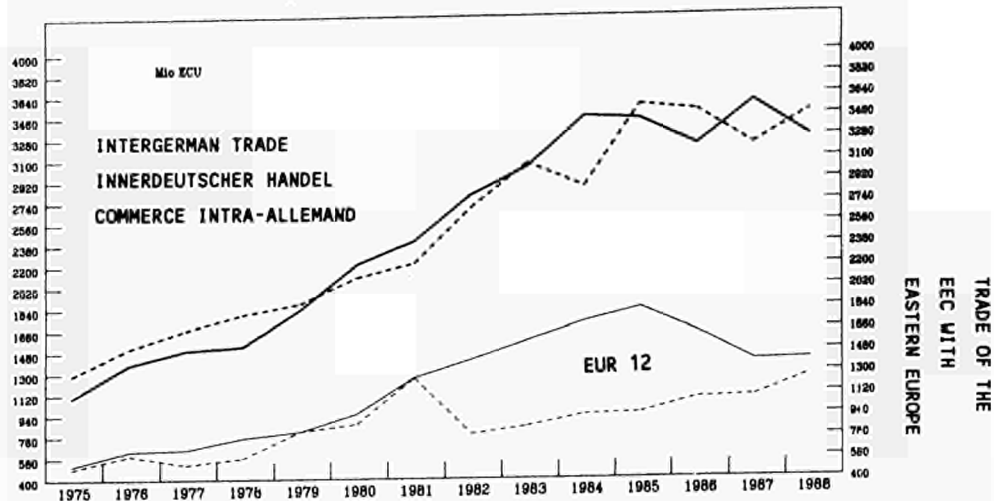


A more in depth analysis of the trade EC-COMECON covering the period 1979-1987 has been published by Eurostat in its series D, theme 6.

SOVIET UNION SOWJET UNION L'UNION SOVIETIQUE

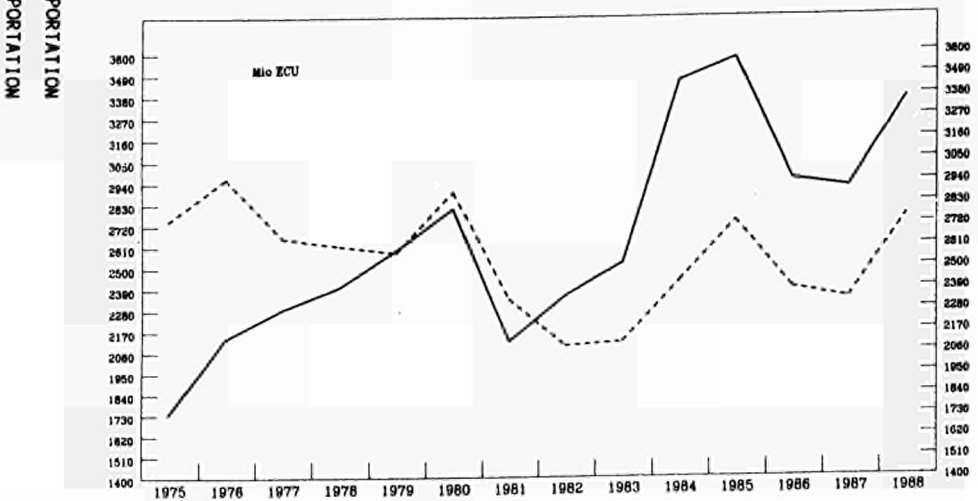


GERMAN DEM. REP. DEUTSCHE DEM.REP. REP.DEM.D'ALLEMAGNE

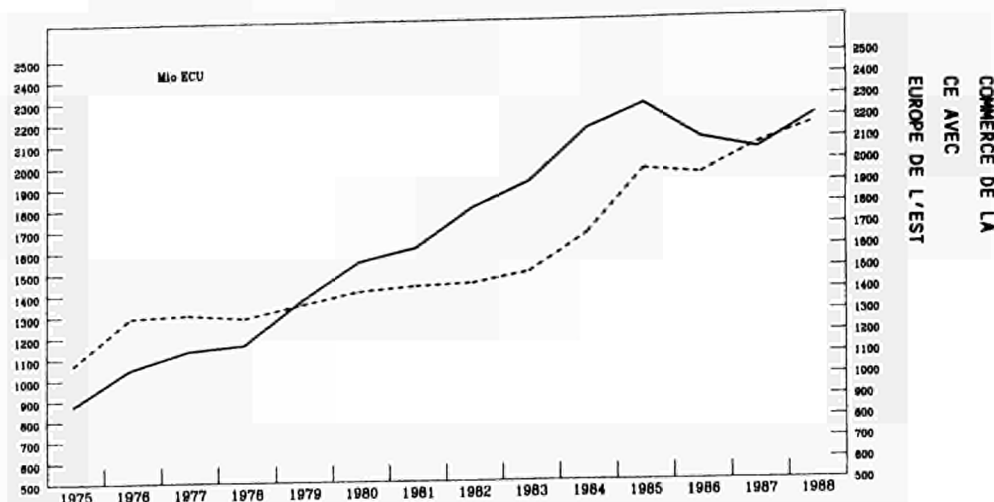


TRADE OF THE
EEC WITH
EASTERN EUROPE
HANDEL DER
EG MIT
OSTEUROPA

POLAND POLEN POLOGNE

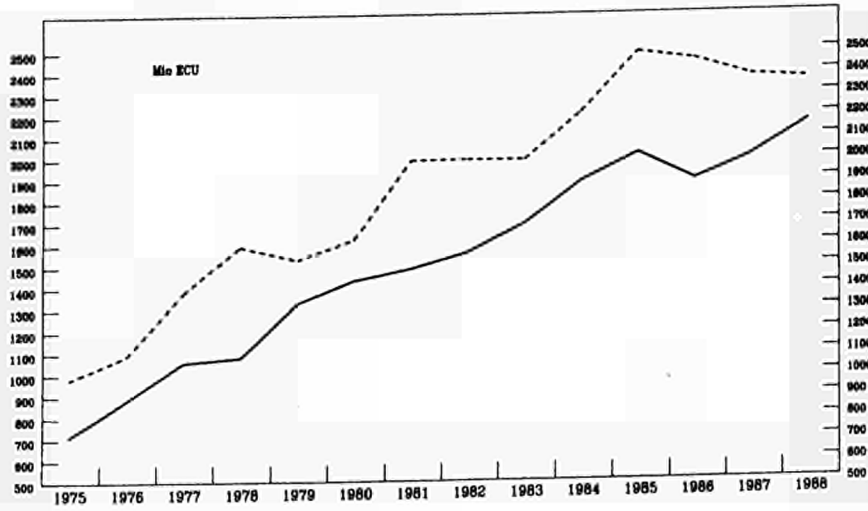


CZECHOSLOVAKIA TSCHOSLOWAKEI TCHECOSLOVAQUIE

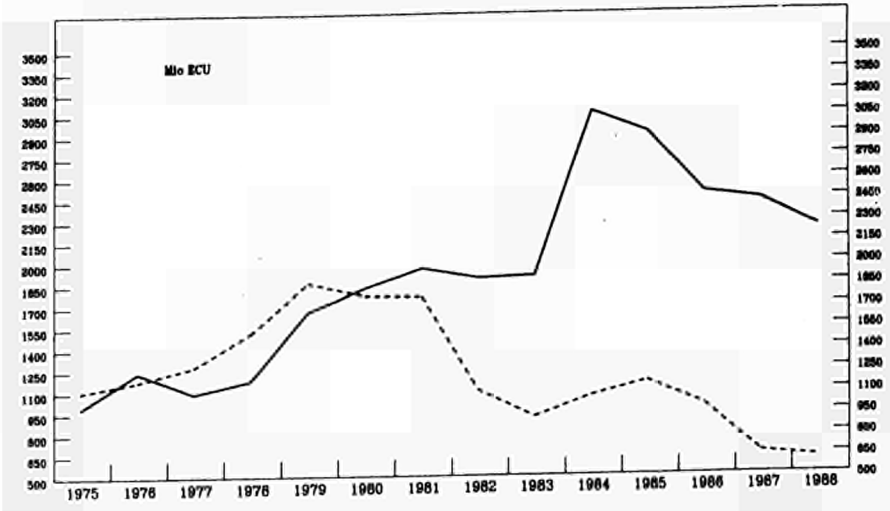


COMMERCE DE LA
CE AVEC
EUROPE DE L'EST

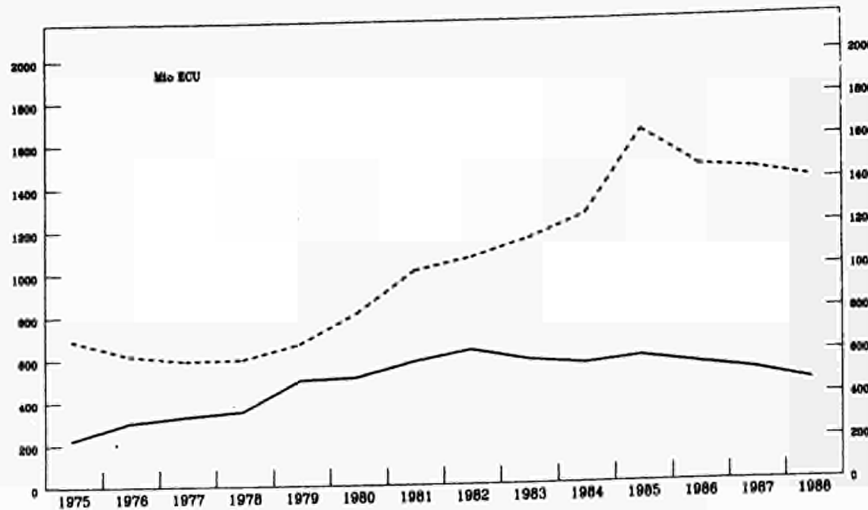
HUNGARY UNGARN HONGRIE



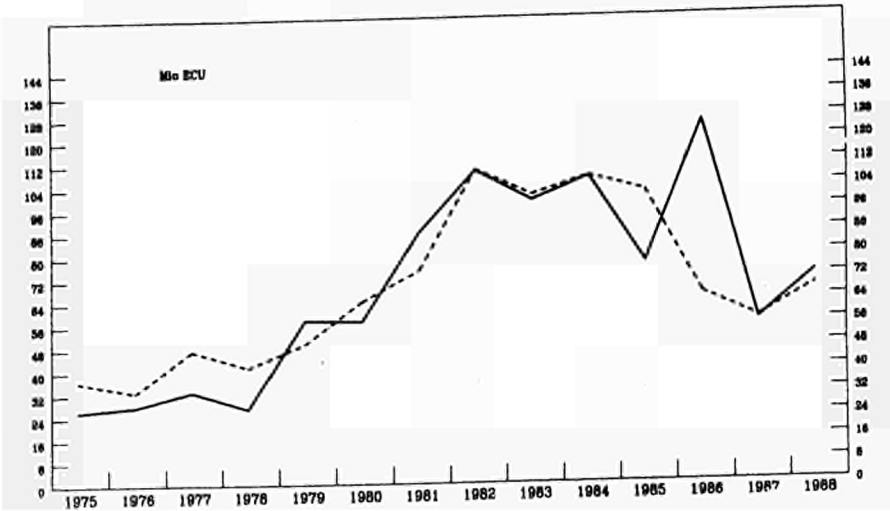
ROMANIA RUMANIEN ROUMANIE



BULGARIA BULGARIEN BULGARIE



ALBANIA ALBANIEN ALBANIE



--- IMPORTS/EINFUHR/IMPORTATION
 --- EXPORTS/AUSFUHR/EXPORTATION

TRADE OF THE
 EEC WITH
 EASTERN EUROPE

HANDEL DER
 EG MIT
 OSTEUROPA

COMMERCE DE LA
 CE AVEC
 EUROPE DE L'EST

TRADE OF THE EUROPEAN COMMUNITY WITH EASTERN EUROPE

Total EUR12										Millions ECU	
Section SITC 0+1 : Food, drink and tobacco											
	SUN	DDR	POL	CSK	HUN	ROM	BUL	ALB	*TOTAL	*EXTRA	*%
Imports											
1975	82	118	257	64	250	188	77	3	1040	17842	6
1976	90	117	343	53	250	181	89	2	1128	21641	5
1977	96	45	364	57	299	122	89	8	1082	24714	4
1978	87	95	363	74	330	121	101	6	1177	23669	5
1979	93	59	383	87	351	121	108	4	1206	24836	5
1980	90	48	384	83	360	106	86	8	1166	26456	4
1981	96	86	300	101	386	101	86	5	1162	29358	4
1982	103	44	342	130	429	89	98	7	1242	31862	4
1983	107	18	398	134	452	85	91	11	1295	33290	4
1984	140	39	495	154	500	98	93	10	1528	36919	4
1985	159	49	578	147	539	105	98	6	1681	37838	4
1986	143	63	516	130	446	102	98	6	1503	34800	4
1987	143	38	587	129	464	109	92	5	1567	32721	5
1988	143	38	582	143	505	95	97	6	1608	34357	5
88/1	31	7	134	33	105	21	28	1	359	7868	5
88/2	28	8	149	31	99	21	16	2	355	8476	4
88/3	30	9	127	28	129	26	23	1	376	8518	4
88/4	54	14	172	51	172	27	30	2	518	9495	5
89/1	32	10	157	40	133	22	35	1	430	8665	5
89/2	39	12	210	50	136	21	23	2	493	9345	5
Exports											
1975	232	70	130	67	54	27	34	1	615	8418	7
1976	344	78	192	76	59	71	44	0	864	9934	9
1977	332	77	123	99	99	59	34	5	828	11161	7
1978	245	119	248	96	77	47	39	2	874	12274	7
1979	480	121	306	102	83	90	55	2	1238	13889	9
1980	1154	167	566	147	88	158	43	1	2323	17898	13
1981	1828	377	730	143	105	382	64	2	3630	24256	15
1982	1407	148	457	159	97	109	62	7	2447	23459	10
1983	1828	205	337	119	114	33	79	4	2716	24307	11
1984	1664	176	395	131	107	35	73	5	2585	27980	9
1985	1796	154	338	150	92	56	172	5	2762	29217	9
1986	1098	103	251	130	94	123	83	5	1886	24681	8
1987	843	118	230	129	78	32	61	3	1495	24072	6
1988	815	180	286	126	73	28	105	8	1621	25782	6
88/1	183	31	47	22	15	19	34	1	350	5575	6
88/2	122	37	58	26	16	4	23	1	290	6160	5
88/3	82	40	51	23	20	1	21	2	242	6318	4
88/4	428	72	130	55	22	4	27	4	739	7729	10
89/1	408	76	162	32	31	3	23	5	742	7304	10
89/2	511	113	178	47	17	28	42	6	939	7956	12

* TOTAL = Eastern Europe; EXTRA = Extra-EC; % = TOTAL/EXTRA(%)

TRADE OF THE EUROPEAN COMMUNITY WITH EASTERN EUROPE

Total EUR12

Millions ECU

Section SITC 3 : Fuels

	SUN	DDR	POL	CSK	HUN	ROM	BUL	ALB	*TOTAL	*EXTRA	*%
Imports											
1975	2104	13	687	66	5	179	4	10	3068	42958	7
1976	3409	15	731	93	10	309	14	9	4591	54834	8
1977	3586	25	669	77	28	201	20	11	4616	54685	8
1978	3913	27	674	85	23	261	37	5	5024	51927	10
1979	4539	29	678	123	63	633	106	19	6190	67175	9
1980	6422	125	637	228	55	785	123	26	8400	97173	9
1981	9015	281	369	221	62	949	201	51	11149	116803	10
1982	12678	244	614	212	50	746	212	62	14818	119557	12
1983	14459	362	708	248	83	771	197	42	16871	111179	15
1984	17246	311	996	282	100	1543	149	34	20663	119599	17
1985	14951	332	901	290	122	1294	137	21	18048	120176	15
1986	6710	146	518	193	91	813	102	55	8628	59405	15
1987	7525	76	419	189	68	897	92	14	9280	56173	17
1988	6628	46	385	152	67	627	36	8	7949	47367	17
88/1	1381	12	92	37	15	154	1	2	1694	11512	15
88/2	1712	11	93	37	17	161	11	0	2043	11338	18
88/3	1877	11	97	35	18	167	10	6	2220	12249	18
88/4	1658	12	103	43	17	145	14	0	1992	12268	16
89/1	1628	15	97	34	15	165	7	0	1961	14010	14
89/2	2205	21	97	50	22	247	14	1	2657	15393	17
Exports											
1975	21	1	23	11	3	44	8	0	113	4637	2
1976	16	4	24	8	3	57	3	1	117	5607	2
1977	16	2	27	11	4	19	6	6	92	6931	1
1978	23	3	20	14	11	39	4	5	119	6950	2
1979	26	12	24	17	20	123	4	7	233	9844	2
1980	47	12	27	10	22	130	7	7	263	9762	3
1981	59	3	21	17	53	161	13	13	341	14963	2
1982	113	2	24	15	20	128	19	10	330	16965	2
1983	99	9	20	15	13	87	28	9	280	16544	2
1984	120	16	27	17	26	86	25	3	320	17434	2
1985	92	74	28	15	63	89	34	1	396	18574	2
1986	73	12	24	11	28	45	35	1	228	10641	2
1987	46	13	16	9	10	4	24	1	123	9578	1
1988	50	1	11	6	10	14	5	1	98	8231	1
88/1	7	0	2	1	3	5	2	0	20	2202	1
88/2	12	0	2	2	1	1	1	0	20	2004	1
88/3	13	0	4	2	1	1	1	1	22	2067	1
88/4	18	1	3	1	5	7	1	0	36	1958	2
89/1	6	0	4	1	1	9	0	3	24	2139	1
89/2	13	1	7	2	2	1	3	2	30	2240	1

* TOTAL = Eastern Europe; EXTRA = Extra-EC; % = TOTAL/EXTRA(%)

TRADE OF THE EUROPEAN COMMUNITY WITH EASTERN EUROPE

Total EUR12

Millions ECU

Section SITC 2+4 : Raw materials

	SUN	DDR	POL	CSK	HUN	ROM	BUL	ALB	*TOTAL	*EXTRA	*%
Imports											
1975	839	33	173	108	68	143	22	6	1392	18872	7
1976	1124	39	257	135	89	89	30	7	1768	24094	7
1977	1098	50	256	153	108	93	31	3	1792	25085	7
1978	897	36	233	165	104	90	29	3	1557	23750	7
1979	890	39	248	180	106	96	33	20	1612	28631	6
1980	1059	37	266	197	106	75	30	9	1780	31436	6
1981	1065	42	285	195	116	68	23	10	1804	32282	6
1982	1129	52	292	221	146	80	29	16	1966	32575	6
1983	1089	60	308	241	152	68	33	21	1971	34598	6
1984	1178	81	416	294	183	114	40	32	2338	42032	6
1985	1051	82	480	296	197	111	45	26	2288	41640	5
1986	1130	83	370	274	177	93	31	22	2181	32623	7
1987	1332	79	326	262	198	70	35	13	2314	32316	7
1988	1442	80	383	298	218	71	45	23	2562	37234	7
88/1	285	20	87	63	47	22	7	5	536	8676	6
88/2	324	20	94	74	52	16	7	5	594	9334	6
88/3	425	17	86	68	49	18	10	7	679	9327	7
88/4	408	23	116	93	70	15	21	6	753	9897	8
89/1	365	23	95	81	56	16	16	8	660	10541	6
89/2	417	26	125	80	55	18	12	10	744	11218	7
Exports											
1975	71	27	86	67	39	51	18	4	362	2583	14
1976	63	37	89	75	60	71	20	4	420	3134	13
1977	72	40	103	87	73	63	23	4	466	3668	13
1978	105	37	93	81	79	66	32	6	495	3783	13
1979	99	45	96	87	71	63	41	4	507	4162	12
1980	167	81	89	99	70	84	37	7	635	4871	13
1981	199	67	84	107	79	77	41	6	662	5686	12
1982	210	52	90	104	84	64	49	8	660	5663	12
1983	261	57	78	91	87	59	46	10	689	6450	11
1984	282	95	97	109	100	69	44	10	807	8431	10
1985	325	80	109	117	98	63	49	12	852	8932	10
1986	170	72	81	104	105	52	47	5	635	7232	9
1987	217	68	85	105	91	61	40	4	671	7696	9
1988	166	76	107	124	91	58	46	5	674	8753	8
88/1	34	22	23	32	24	10	12	1	157	2111	7
88/2	49	19	21	38	18	16	10	1	174	2147	8
88/3	49	17	31	26	25	8	12	2	168	2090	8
88/4	34	18	32	28	24	24	12	1	175	2405	7
89/1	40	19	28	31	25	12	12	4	171	2458	7
89/2	52	26	30	38	26	21	9	3	204	2466	8

* TOTAL = Eastern Europe; EXTRA = Extra-EC; % = TOTAL/EXTRA(%)

TRADE OF THE EUROPEAN COMMUNITY WITH EASTERN EUROPE

Total EUR12

Millions ECU

Section SITC 5 : Chemicals

	SUN	DDR	POL	CSK	HUN	ROM	BUL	ALB	*TOTAL	*EXTRA	*%
Imports											
1975	168	80	61	64	42	45	15	0	475	5666	8
1976	261	82	81	72	56	57	25	1	635	7424	9
1977	517	85	88	86	71	64	23	0	934	8173	11
1978	569	85	83	73	75	50	24	1	960	9076	11
1979	769	110	81	99	108	56	31	1	1254	10812	12
1980	626	137	100	130	141	68	43	1	1246	11847	11
1981	690	192	98	173	161	102	49	1	1466	13555	11
1982	555	237	80	208	162	113	56	1	1411	14700	10
1983	587	260	98	211	180	100	52	1	1488	16449	9
1984	651	283	132	217	199	144	54	2	1681	20130	8
1985	731	309	145	245	243	153	61	2	1890	22303	8
1986	630	273	149	218	189	154	53	1	1669	21168	8
1987	634	224	151	209	200	109	56	2	1586	21644	7
1988	712	254	192	263	221	114	76	1	1834	25058	7
88/1	176	64	45	55	50	31	15	0	436	6103	7
88/2	102	61	42	66	50	32	15	1	368	6216	6
88/3	198	50	44	61	50	23	19	0	445	6009	7
88/4	236	79	61	81	71	28	27	0	585	6730	9
89/1	161	79	56	77	78	31	16	1	499	7383	7
89/2	139	74	61	72	60	29	18	0	453	7781	6
Exports											
1975	490	111	313	243	235	138	77	5	1612	12875	13
1976	526	112	415	266	254	159	84	6	1824	15592	12
1977	778	116	431	277	299	165	95	7	2169	18047	12
1978	750	124	446	254	347	201	101	8	2232	19341	12
1979	804	126	414	242	276	246	113	7	2228	19680	11
1980	1120	131	419	278	336	253	144	9	2690	22359	12
1981	1052	152	308	279	389	223	164	12	2579	25313	10
1982	944	86	401	281	397	155	178	17	2459	27443	9
1983	996	96	428	296	416	165	204	9	2610	31760	8
1984	1239	184	474	318	470	212	224	10	3131	37992	8
1985	1622	170	536	363	484	245	252	10	3680	42077	9
1986	1326	114	483	340	467	169	218	9	3126	37443	8
1987	1362	131	483	349	440	119	271	6	3162	38023	8
1988	1459	155	591	412	466	116	270	12	3483	44443	8
88/1	382	35	139	109	122	23	73	2	885	10368	9
88/2	451	43	134	103	118	38	69	4	961	10768	9
88/3	335	37	134	95	101	21	65	3	790	11155	7
88/4	291	40	184	105	125	34	63	3	847	12152	7
89/1	394	44	150	106	141	22	56	3	917	11583	8
89/2	500	52	165	121	136	26	69	4	1070	12459	9

* TOTAL = Eastern Europe; EXTRA = Extra-EC; % = TOTAL/EXTRA(%)

TRADE OF THE EUROPEAN COMMUNITY WITH EASTERN EUROPE

Total EUR12

Millions ECU

Section SITC 7 : Machinery and transport equipment

	SUN	DDR	POL	CSK	HUN	ROM	BUL	ALB	*TOTAL	*EXTRA	*%
Imports											
1975	140	96	189	155	61	71	21	0	735	17743	4
1976	191	129	221	169	80	96	28	0	915	22802	4
1977	179	149	286	189	106	93	27	0	1031	25627	4
1978	193	205	381	176	120	87	29	0	1191	30116	4
1979	274	178	314	204	147	86	44	0	1248	32035	4
1980	219	209	356	205	162	109	58	0	1318	38312	3
1981	245	202	267	199	164	103	76	1	1256	46787	3
1982	249	256	225	201	167	106	49	0	1253	50168	2
1983	285	249	219	216	182	101	33	1	1286	57057	2
1984	272	335	309	239	189	118	27	2	1490	68601	2
1985	313	341	308	273	208	154	35	0	1633	76545	2
1986	360	333	254	284	217	179	38	1	1666	78860	2
1987	403	320	306	275	221	157	43	1	1725	85592	2
1988	414	324	453	312	260	147	47	0	1959	106580	2
88/1	93	75	89	78	55	33	10	0	433	23859	2
88/2	110	81	104	81	63	35	12	0	486	26830	2
88/3	107	77	103	68	63	37	11	0	466	26282	2
88/4	104	91	157	85	79	42	14	0	574	29609	2
89/1	118	83	111	74	70	30	15	1	502	28936	2
89/2	138	97	139	101	81	41	19	0	616	33578	2
Exports											
1975	2162	140	1134	385	263	427	318	7	4838	51044	9
1976	2234	206	1195	457	330	366	290	2	5080	59697	9
1977	2579	109	1067	490	437	525	216	3	5426	67735	8
1978	2401	115	960	499	542	633	194	4	5348	69298	8
1979	2285	255	776	448	475	652	176	9	5075	71459	7
1980	2223	190	931	450	446	456	230	10	4937	80340	6
1981	1921	375	618	429	577	328	373	14	4635	97429	5
1982	2760	228	476	465	599	164	402	26	5120	106810	5
1983	4356	245	479	452	546	143	406	30	6656	109638	6
1984	3801	182	608	538	603	163	429	50	6374	125514	5
1985	3006	201	802	659	746	218	590	37	6259	138631	5
1986	3087	407	749	753	768	167	623	18	6572	133595	5
1987	2634	373	742	890	782	79	606	20	6126	131893	5
1988	3515	448	868	893	765	66	543	16	7113	141219	5
88/1	700	75	173	142	140	10	115	3	1360	31115	4
88/2	904	77	200	216	187	18	129	5	1731	34980	5
88/3	827	138	197	201	193	16	140	4	1720	34693	5
88/4	1084	158	298	334	245	22	159	4	2302	40431	6
89/1	920	89	246	182	212	12	131	3	1795	37293	5
89/2	1050	281	324	194	286	12	135	7	2290	40589	6

* TOTAL = Eastern Europe; EXTRA = Extra-EC; % = TOTAL/EXTRA(%)

TRADE OF THE EUROPEAN COMMUNITY WITH EASTERN EUROPE

Total EUR12

Millions ECU

Section SITC 6+8 : Other manufactured goods

	SUN	DDR	POL	CSK	HUN	ROM	BUL	ALB	*TOTAL	*EXTRA	*%
Imports											
1975	672	177	348	396	276	358	79	7	2311	26192	9
1976	800	253	480	501	384	492	110	9	3029	34346	9
1977	854	296	574	542	430	509	132	11	3347	37948	9
1978	851	314	644	559	412	556	125	10	3471	41756	8
1979	545	380	764	644	530	659	157	11	3691	47586	8
1980	721	384	887	675	577	671	146	12	4074	56849	7
1981	560	441	741	690	562	627	119	21	3759	58303	6
1982	813	562	722	789	572	746	161	23	4387	62699	7
1983	822	592	710	831	607	764	155	21	4502	67227	7
1984	1101	631	919	938	674	1015	170	26	5475	79103	7
1985	970	701	986	984	651	1085	182	19	5578	83841	7
1986	1109	704	1019	967	717	1127	190	38	5870	85660	7
1987	1167	640	1005	940	785	1048	164	20	5771	91363	6
1988	1611	634	1268	990	849	1169	139	33	6691	108990	6
88/1	359	140	306	231	185	286	39	5	1553	25541	6
88/2	411	157	307	246	202	247	32	7	1607	25653	6
88/3	401	160	302	252	216	332	31	11	1705	27656	6
88/4	440	177	353	261	246	304	37	10	1826	30140	6
89/1	673	159	367	264	227	323	41	12	2066	31880	6
89/2	695	179	353	276	244	337	37	19	2142	33483	6
Exports											
1975	2058	141	1021	276	369	411	227	18	4521	36437	12
1976	2167	161	1003	387	368	437	170	17	4711	41321	11
1977	2238	170	865	313	444	431	209	21	4690	49331	10
1978	2271	174	817	322	517	511	219	17	4847	55801	9
1979	2674	185	813	342	498	610	246	19	5387	61009	9
1980	2802	216	685	303	550	591	311	31	5489	68629	8
1981	2825	196	399	315	651	456	296	26	5165	81794	6
1982	3473	215	412	288	667	388	303	39	5786	86096	7
1983	4418	182	531	380	673	333	328	35	6880	91870	7
1984	4795	222	616	424	749	376	388	26	7596	109585	7
1985	5081	205	726	512	849	391	432	30	8225	119179	7
1986	3693	254	622	467	807	345	389	24	6603	106865	6
1987	3555	255	590	467	797	294	366	18	6344	106033	6
1988	3575	273	708	461	760	298	360	24	6463	114105	6
88/1	829	53	135	83	159	59	90	3	1410	25322	6
88/2	888	67	178	109	211	89	86	7	1637	28400	6
88/3	947	70	158	112	177	67	80	8	1616	28801	6
88/4	911	83	237	157	213	83	104	6	1800	31582	6
89/1	835	76	211	90	180	59	80	7	1538	29850	5
89/2	956	79	268	127	260	87	109	11	1898	33523	6

* TOTAL = Eastern Europe; EXTRA = Extra-EC; % = TOTAL/EXTRA(%)

TRADE OF THE EUROPEAN COMMUNITY WITH EASTERN EUROPE

Total EUR12

Millions ECU

Section SITC 0-9 : Total

	SUN	DDR	POL	CSK	HUN	ROM	BUL	ALB	*TOTAL	*EXTRA	*%
Imports											
1975	4064	519	1733	874	713	989	222	26	9141	132932	7
1976	5928	641	2136	1047	882	1238	302	28	12203	168838	7
1977	6516	654	2288	1132	1057	1088	329	33	13096	180118	7
1978	6835	750	2406	1158	1080	1179	351	27	13785	184859	7
1979	8829	803	2594	1367	1329	1662	496	57	17136	225401	8
1980	11382	951	2805	1544	1430	1826	507	57	20501	282532	7
1981	14180	1255	2119	1606	1483	1963	578	88	23271	318259	7
1982	17636	1404	2355	1791	1557	1891	627	109	27370	335366	8
1983	19267	1562	2525	1913	1690	1905	578	98	29538	341699	9
1984	22960	1721	3457	2158	1884	3060	556	107	35903	390640	9
1985	20710	1832	3572	2272	2014	2910	586	76	33972	406418	8
1986	13158	1626	2948	2108	1888	2483	549	125	24884	334564	7
1987	13128	1390	2907	2055	1996	2429	517	56	24479	340058	7
1988	12988	1400	3360	2211	2158	2234	462	72	24884	387519	6
88/1	2907	321	773	506	465	549	105	13	5639	90033	6
88/2	3134	344	827	545	494	514	99	15	5972	95539	6
88/3	3529	332	780	524	535	608	109	27	6445	97436	7
88/4	3418	403	980	636	664	563	149	17	6828	104511	7
89/1	3445	377	905	584	586	599	134	22	6652	107629	6
89/2	4154	418	1015	650	617	696	126	34	7709	117065	7
Exports											
1975	5064	494	2745	1068	980	1105	689	37	12183	118530	10
1976	5378	605	2964	1290	1090	1176	617	33	13153	138102	10
1977	6068	528	2658	1303	1380	1276	591	47	13852	160652	9
1978	5849	581	2617	1284	1592	1513	596	41	14073	171083	8
1979	6583	803	2581	1347	1528	1864	665	49	15419	190309	8
1980	7808	865	2892	1405	1619	1772	805	64	17231	216670	8
1981	8257	1252	2336	1427	1988	1765	1003	74	18103	265349	7
1982	9254	775	2094	1438	1991	1103	1059	109	17824	284069	6
1983	12452	841	2113	1490	1989	914	1144	100	21044	300621	7
1984	12482	937	2428	1668	2206	1058	1253	107	22140	350859	6
1985	12509	947	2733	1966	2486	1157	1639	101	23539	378651	6
1986	9875	1073	2389	1944	2450	987	1472	65	20254	341934	6
1987	9189	1086	2332	2078	2372	651	1453	56	19217	339338	6
1988	10113	1264	2756	2170	2354	614	1406	68	20746	362788	6
88/1	2297	242	553	418	496	131	345	10	4492	81399	6
88/2	2572	276	651	533	593	173	340	19	5157	89526	6
88/3	2341	328	616	493	553	123	340	21	4815	90385	5
88/4	2903	418	936	726	712	187	381	18	6282	101478	6
89/1	2773	353	843	478	629	123	333	27	5558	96038	6
89/2	3125	553	1035	568	772	184	371	32	6641	104713	6

* TOTAL = Eastern Europe; EXTRA = Extra-EC; % = TOTAL/EXTRA(%)

TRADE OF THE EUROPEAN COMMUNITY WITH EASTERN EUROPE

Millions ECU

Total trade for 1988

	SUN	DDR	POL	CSK	HUN	ROM	BUL	ALB	*TOTAL	*EXTRA	*%
Imports											
EUR12	12988	1400	3360	2211	2158	2234	462	72	24884	387519	6
UEBL	1095	174	147	83	72	56	18	1	1645	23768	7
DK	148	128	200	60	37	9	3	0	586	10345	6
D	3254	-	1396	1049	1089	651	153	23	7615	98813	8
GR	224	39	93	73	34	49	40	3	556	3929	14
E	893	55	52	56	31	78	21	4	1190	21043	6
F	2344	387	292	203	214	377	49	6	3871	54447	7
IRL	40	9	59	13	4	3	1	0	128	3685	3
I	2660	179	376	284	407	698	94	27	4724	49519	10
NL	1203	170	250	136	105	139	30	5	2038	34091	6
PO	36	12	8	12	4	9	5	0	87	4770	2
UK	1091	247	487	242	160	165	47	4	2444	83108	3
Exports											
EUR12	10113	1264	2756	2170	2354	614	1406	68	20746	362788	6
UEBL	445	130	116	77	109	22	67	1	968	19554	5
DK	137	102	93	54	46	4	14	0	449	11693	4
D	4544	-	1396	1210	1331	276	756	18	9531	124825	8
GR	76	23	10	24	9	27	29	4	202	1630	12
E	218	71	43	35	25	2	29	0	424	14099	3
F	1651	302	273	195	190	102	130	5	2847	55531	5
IRL	21	11	15	9	13	0	9	0	77	3946	2
I	1777	223	317	237	269	61	172	32	3088	46206	7
NL	421	229	232	132	159	41	71	4	1289	22214	6
PO	56	4	3	4	6	4	5	0	82	2440	3
UK	768	170	259	195	197	75	123	2	1789	60649	3

Inter-German trade

	1984	1985	1986	1987	1988	88/1	88/2	88/3	88/4	89/1	89/2
Supplies from the G.D.R.											
	3455	3430	3209	3575	3273	791	807	804	871	820	860
Deliveries to the G.D.R.											
	2862	3551	3502	3210	3487	760	759	859	1109	808	937

* TOTAL = Eastern Europe; EXTRA = Extra-EC; % = TOTAL/EXTRA(%)