

# Harmonized Indices of Consumer Prices

## October 2007

**Euro area** annual inflation, as measured by the Monetary Union Index of Consumer Prices (MUICP)<sup>1</sup>, was 2.6% in October 2007, up from 2.1% in September. A year earlier the rate was 1.6%.

**EU** annual inflation, as measured by the European Index of Consumer Prices (EICP)<sup>2</sup>, was 2.7% in October 2007, up from 2.2% in September. A year earlier the rate was 1.8%.

**EEA** annual inflation, as measured by the European Economic Area Index of Consumer Prices (EEAICP), was 2.6% in October 2007.

In October 2007, the highest annual inflation rates in the EU Member States were recorded in **Latvia** (13.2%), **Bulgaria** (10.6%) and **Estonia** (8.7%), and the lowest rates were observed in **Malta** and in the **Netherlands** (1.6% each), **Denmark** and **Finland** (1.8% each).

For the **USA**<sup>3</sup> and **Japan**<sup>3</sup> no October data was available in time for publication.

The annual inflation rates for the **euro area**, the **EU** and the latest available rates for the **USA** and **Japan** are shown in the graph below.

Methodological notes can be accessed via the Eurostat internet site under Special topics/HICP/Methodology – [Short guide for users](#) (issue date: 17/05/2004).

# Statistics in focus

## ECONOMY AND FINANCE

121/2007

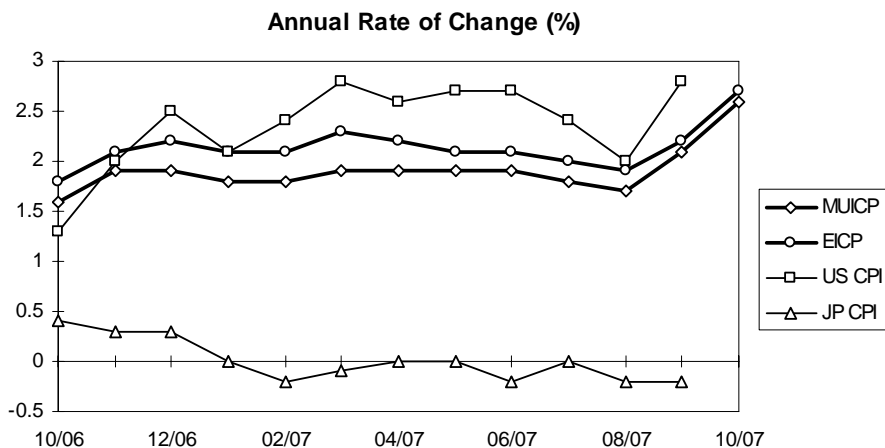
### Prices

Author

Christine WIRTZ

## Contents

|   |   |
|---|---|
| Price Indices.....                            | 2 |
| Rates of Change.....                          | 4 |
| EEA Index Numbers<br>and Rates of Change..... | 6 |
| COICOP/HICP Main<br>categories.....           | 7 |



1 The MUICP is the official euro area aggregate. Its country coverage changes in line with the addition of new Member States and integrates them using a chain index formula. Since January 2007 the euro area includes: Belgium, Germany, Ireland, Greece, Spain, France, Italy, Luxembourg, the Netherlands, Austria, Portugal, Slovenia and Finland.

2 The EICP is the official EU aggregate. Its country coverage changes in line with the addition of new EU Member States and integrates them using a chain index formula.

3 For the USA and Japan the national CPIs are given, which are not strictly comparable with the HICPs.



TABLE I  
HARMONIZED INDICES OF CONSUMER PRICES  
INDEX NUMBERS 2005 = 100

|                             | Euro area | EICP    | BE     | BG     | CZ    | DK    | DE    | EE     | IE    | EL     | ES     | FR     | IT    | CY     |
|-----------------------------|-----------|---------|--------|--------|-------|-------|-------|--------|-------|--------|--------|--------|-------|--------|
| <b>Annual Average Index</b> |           |         |        |        |       |       |       |        |       |        |        |        |       |        |
| 2004                        | 97.86     | 97.88   | 97.53  | 94.30  | 98.4  | 98.3  | 98.1  | 96.05  | 97.9  | 96.63  | 96.73  | 98.14  | 97.8  | 98.00  |
| 2005                        | 100.00    | 100.00  | 100.00 | 100.00 | 100.0 | 100.0 | 100.0 | 100.00 | 100.0 | 100.00 | 100.00 | 100.00 | 100.0 | 100.00 |
| 2006                        | 102.18    | 102.20  | 102.33 | 107.42 | 102.1 | 101.8 | 101.8 | 104.45 | 102.7 | 103.31 | 103.56 | 101.91 | 102.2 | 102.25 |
| <b>Monthly Index - 2005</b> |           |         |        |        |       |       |       |        |       |        |        |        |       |        |
| Jan                         | 98.31     | 98.42   | 96.92  | 96.93  | 99.2  | 98.2  | 98.6  | 97.54  | 97.9  | 98.70  | 97.40  | 98.35  | 98.1  | 98.23  |
| Feb                         | 98.65     | 98.73   | 99.06  | 97.77  | 99.2  | 98.8  | 99.0  | 98.14  | 98.8  | 97.03  | 97.64  | 99.04  | 98.0  | 97.84  |
| Mar                         | 99.32     | 99.32   | 99.65  | 98.25  | 99.1  | 99.6  | 99.3  | 98.73  | 99.0  | 99.50  | 98.49  | 99.73  | 99.2  | 98.70  |
| Apr                         | 99.75     | 99.73   | 99.82  | 99.40  | 99.4  | 100.1 | 99.3  | 99.19  | 99.6  | 100.30 | 99.90  | 99.91  | 100.0 | 99.80  |
| May                         | 100.00    | 100.00  | 99.99  | 99.24  | 99.5  | 100.0 | 99.7  | 99.39  | 99.8  | 100.67 | 100.05 | 99.91  | 100.3 | 100.04 |
| Jun                         | 100.08    | 100.08  | 100.33 | 98.81  | 100.1 | 100.2 | 99.9  | 100.05 | 100.1 | 100.45 | 100.36 | 100.08 | 100.3 | 100.12 |
| Jul                         | 100.00    | 100.02  | 99.31  | 99.58  | 100.4 | 100.0 | 100.3 | 100.45 | 100.0 | 99.14  | 99.74  | 99.91  | 100.1 | 98.62  |
| Aug                         | 100.25    | 100.26  | 101.10 | 100.24 | 100.4 | 100.1 | 100.5 | 100.71 | 100.5 | 98.56  | 100.21 | 100.34 | 99.9  | 99.33  |
| Sep                         | 100.76    | 100.71  | 101.10 | 101.43 | 100.3 | 100.9 | 100.8 | 101.57 | 101.2 | 100.88 | 100.83 | 100.77 | 100.5 | 100.98 |
| Oct                         | 101.02    | 100.95  | 100.93 | 102.23 | 101.2 | 100.9 | 100.8 | 101.50 | 101.2 | 101.54 | 101.61 | 100.77 | 101.2 | 102.09 |
| Nov                         | 100.76    | 100.75  | 100.85 | 102.69 | 100.8 | 100.5 | 100.3 | 101.43 | 101.0 | 101.32 | 101.77 | 100.51 | 101.2 | 102.32 |
| Dec                         | 101.10    | 101.03  | 100.93 | 103.43 | 100.5 | 100.6 | 101.3 | 101.30 | 100.8 | 101.90 | 102.00 | 100.69 | 101.2 | 101.93 |
| <b>Monthly Index - 2006</b> |           |         |        |        |       |       |       |        |       |        |        |        |       |        |
| Jan                         | 100.66    | 100.64  | 99.60  | 104.29 | 101.6 | 100.2 | 100.7 | 102.08 | 100.3 | 101.67 | 101.53 | 100.60 | 100.3 | 100.22 |
| Feb                         | 100.95    | 100.93  | 101.88 | 106.96 | 101.6 | 100.9 | 101.1 | 102.60 | 101.5 | 100.07 | 101.60 | 100.99 | 100.2 | 100.13 |
| Mar                         | 101.53    | 101.41  | 101.81 | 107.20 | 101.5 | 101.4 | 101.2 | 102.71 | 101.8 | 102.82 | 102.32 | 101.44 | 101.4 | 101.31 |
| Apr                         | 102.20    | 102.07  | 102.38 | 107.87 | 101.7 | 101.9 | 101.6 | 103.44 | 102.3 | 103.84 | 103.80 | 101.89 | 102.3 | 102.34 |
| May                         | 102.48    | 102.42  | 102.74 | 108.13 | 102.3 | 102.1 | 101.8 | 104.00 | 102.8 | 103.96 | 104.17 | 102.32 | 102.6 | 102.54 |
| Jun                         | 102.56    | 102.53  | 102.82 | 107.07 | 102.4 | 102.3 | 101.9 | 104.48 | 103.0 | 103.90 | 104.33 | 102.32 | 102.7 | 102.75 |
| Jul                         | 102.43    | 102.43  | 101.72 | 107.32 | 102.8 | 102.0 | 102.4 | 104.94 | 102.9 | 103.02 | 103.76 | 102.13 | 102.4 | 101.42 |
| Aug                         | 102.52    | 102.60  | 103.47 | 107.28 | 103.0 | 102.0 | 102.3 | 105.70 | 103.7 | 101.96 | 103.99 | 102.46 | 102.2 | 102.04 |
| Sep                         | 102.52    | 102.65  | 102.98 | 106.86 | 102.5 | 102.4 | 101.8 | 105.45 | 103.4 | 104.05 | 103.79 | 102.26 | 102.9 | 103.25 |
| Oct                         | 102.60    | 102.74  | 102.68 | 107.58 | 102.0 | 102.3 | 101.9 | 105.34 | 103.4 | 104.73 | 104.22 | 102.02 | 103.1 | 103.81 |
| Nov                         | 102.64    | 102.82  | 102.90 | 108.73 | 101.8 | 102.3 | 101.8 | 106.15 | 103.4 | 104.57 | 104.47 | 102.14 | 103.2 | 103.70 |
| Dec                         | 103.04    | 103.21  | 103.03 | 109.72 | 102.0 | 102.3 | 102.7 | 106.45 | 103.8 | 105.16 | 104.77 | 102.39 | 103.3 | 103.43 |
| <b>Monthly Index - 2007</b> |           |         |        |        |       |       |       |        |       |        |        |        |       |        |
| Jan                         | 102.51    | 102.75  | 101.29 | 111.33 | 103.0 | 102.0 | 102.5 | 107.18 | 103.2 | 104.76 | 104.01 | 102.00 | 102.2 | 101.66 |
| Feb                         | 102.81    | 103.09  | 103.69 | 111.91 | 103.3 | 102.8 | 103.0 | 107.34 | 104.1 | 103.11 | 104.09 | 102.21 | 102.3 | 101.36 |
| Mar                         | 103.50    | 103.71  | 103.68 | 111.94 | 103.6 | 103.3 | 103.2 | 108.49 | 104.8 | 105.66 | 104.89 | 102.69 | 103.5 | 102.72 |
| Apr                         | 104.15    | 104.30  | 104.20 | 112.61 | 104.4 | 103.6 | 103.6 | 109.26 | 105.3 | 106.50 | 106.38 | 103.24 | 104.1 | 104.01 |
| May                         | 104.40    | 104.58  | 104.08 | 112.98 | 104.8 | 103.8 | 103.8 | 110.14 | 105.6 | 106.69 | 106.68 | 103.51 | 104.5 | 104.53 |
| Jun                         | 104.50    | 104.71  | 104.16 | 112.74 | 105.1 | 103.6 | 103.9 | 110.75 | 105.9 | 106.64 | 106.89 | 103.66 | 104.7 | 104.50 |
| Jul                         | 104.25    | 104.44  | 103.05 | 114.66 | 105.4 | 103.1 | 104.4 | 111.81 | 105.7 | 105.83 | 106.14 | 103.33 | 104.1 | 103.79 |
| Aug                         | 104.31    | 104.57  | 104.66 | 117.22 | 105.7 | 102.9 | 104.3 | 112.19 | 106.1 | 104.75 | 106.31 | 103.77 | 103.9 | 104.33 |
| Sep                         | 104.71    | 104.95  | 104.46 | 118.63 | 105.4 | 103.6 | 104.5 | 113.37 | 106.4 | 107.11 | 106.63 | 103.91 | 104.7 | 105.67 |
| Oct                         | 105.22p   | 105.49p | 104.95 | 119.02 | 106.1 | 104.1 | 104.7 | 114.54 | 106.5 | 107.86 | 108.02 | 104.20 | 105.5 | 106.61 |
| Nov                         |           |         |        |        |       |       |       |        |       |        |        |        |       |        |
| Dec                         |           |         |        |        |       |       |       |        |       |        |        |        |       |        |

p provisional

TABLE I  
**HARMONIZED INDICES OF CONSUMER PRICES**  
**2005 = 100** INDEX NUMBERS

| LV                          | LT     | LU     | HU     | MT     | NL      | AT      | PL    | PT     | RO     | SI     | SK     | FI     | SE     | UK    |             |
|-----------------------------|--------|--------|--------|--------|---------|---------|-------|--------|--------|--------|--------|--------|--------|-------|-------------|
| <b>Annual Average Index</b> |        |        |        |        |         |         |       |        |        |        |        |        |        |       |             |
| 93.55                       | 97.41  | 96.37  | 96.63  | 97.53  | 98.52   | 97.94   | 97.9  | 97.92  | 91.68  | 97.60  | 97.28  | 99.24  | 99.18  | 98.0  | <b>2004</b> |
| 100.00                      | 100.00 | 100.00 | 100.00 | 100.00 | 100.00  | 100.00  | 100.0 | 100.00 | 100.00 | 100.00 | 100.00 | 100.00 | 100.00 | 100.0 | <b>2005</b> |
| 106.57                      | 103.79 | 102.96 | 104.03 | 102.58 | 101.65  | 101.69  | 101.3 | 103.04 | 106.60 | 102.54 | 104.26 | 101.28 | 101.50 | 102.3 | <b>2006</b> |
| <b>Monthly Index - 2005</b> |        |        |        |        |         |         |       |        |        |        |        |        |        |       |             |
| 96.39                       | 98.49  | 96.70  | 98.14  | 96.05  | 98.53   | 99.15   | 99.4  | 98.35  | 96.33  | 97.79  | 99.20  | 98.84  | 98.88  | 98.6  | <b>Jan</b>  |
| 97.29                       | 98.65  | 98.32  | 98.69  | 96.67  | 99.34   | 99.50   | 99.4  | 98.27  | 96.92  | 98.47  | 99.31  | 99.45  | 99.32  | 98.8  | <b>Feb</b>  |
| 97.85                       | 99.21  | 98.65  | 99.15  | 97.14  | 100.14  | 99.93   | 99.5  | 98.67  | 97.21  | 99.48  | 99.31  | 99.88  | 99.58  | 99.3  | <b>Mar</b>  |
| 98.89                       | 99.53  | 99.38  | 99.88  | 100.65 | 100.30  | 99.76   | 99.9  | 99.37  | 98.97  | 99.54  | 99.53  | 100.15 | 99.76  | 99.7  | <b>Apr</b>  |
| 99.65                       | 99.77  | 99.86  | 100.48 | 101.27 | 100.22  | 99.76   | 100.1 | 99.92  | 99.26  | 99.88  | 99.63  | 99.80  | 99.85  | 100.0 | <b>May</b>  |
| 100.27                      | 99.93  | 99.78  | 100.76 | 101.27 | 99.90   | 100.02  | 100.0 | 99.99  | 99.56  | 99.93  | 100.01 | 100.06 | 99.93  | 100.0 | <b>Jun</b>  |
| 100.27                      | 99.77  | 99.70  | 100.67 | 101.35 | 99.58   | 99.76   | 100.0 | 100.38 | 100.53 | 100.72 | 99.69  | 99.71  | 99.67  | 100.1 | <b>Jul</b>  |
| 100.13                      | 99.85  | 101.08 | 100.21 | 101.66 | 99.90   | 99.93   | 100.0 | 100.54 | 100.64 | 100.22 | 99.63  | 100.06 | 99.93  | 100.4 | <b>Aug</b>  |
| 101.66                      | 100.65 | 101.65 | 100.39 | 101.66 | 100.78  | 100.55  | 100.4 | 100.70 | 101.23 | 101.18 | 99.90  | 100.67 | 100.72 | 100.6 | <b>Sep</b>  |
| 102.35                      | 101.30 | 102.46 | 100.44 | 102.60 | 100.78  | 100.55  | 100.7 | 101.09 | 102.10 | 101.35 | 101.24 | 100.67 | 100.98 | 100.7 | <b>Oct</b>  |
| 102.70                      | 101.38 | 101.41 | 100.62 | 99.79  | 100.46  | 100.37  | 100.5 | 101.32 | 103.33 | 100.78 | 101.24 | 100.32 | 100.63 | 100.7 | <b>Nov</b>  |
| 102.56                      | 101.46 | 101.00 | 100.58 | 99.87  | 100.06  | 100.72  | 100.2 | 101.40 | 103.90 | 100.67 | 101.30 | 100.41 | 100.72 | 101.0 | <b>Dec</b>  |
| <b>Monthly Index - 2006</b> |        |        |        |        |         |         |       |        |        |        |        |        |        |       |             |
| 103.67                      | 101.98 | 100.63 | 100.55 | 98.33  | 100.28  | 100.66  | 100.3 | 101.01 | 104.96 | 100.32 | 103.23 | 100.00 | 100.01 | 100.5 | <b>Jan</b>  |
| 104.09                      | 102.03 | 102.13 | 100.92 | 98.93  | 100.78  | 100.99  | 100.3 | 101.21 | 105.21 | 100.70 | 103.56 | 100.77 | 100.37 | 100.9 | <b>Feb</b>  |
| 104.29                      | 102.24 | 102.31 | 101.51 | 100.00 | 101.58  | 101.26  | 100.4 | 102.42 | 105.43 | 101.43 | 103.57 | 101.08 | 101.03 | 101.1 | <b>Mar</b>  |
| 104.96                      | 102.94 | 102.81 | 102.27 | 104.16 | 102.06  | 101.84  | 101.1 | 103.01 | 105.88 | 102.34 | 103.90 | 101.61 | 101.58 | 101.7 | <b>Apr</b>  |
| 106.69                      | 103.39 | 103.43 | 103.37 | 104.83 | 102.02  | 101.86  | 101.6 | 103.57 | 106.52 | 103.27 | 104.41 | 101.52 | 101.78 | 102.2 | <b>May</b>  |
| 106.58                      | 103.66 | 103.70 | 103.66 | 104.57 | 101.68  | 101.88  | 101.5 | 103.52 | 106.69 | 102.96 | 104.55 | 101.54 | 101.78 | 102.5 | <b>Jun</b>  |
| 107.22                      | 104.18 | 103.08 | 103.85 | 104.96 | 101.32  | 101.72  | 101.4 | 103.38 | 106.81 | 102.66 | 104.68 | 101.07 | 101.44 | 102.5 | <b>Jul</b>  |
| 106.96                      | 104.12 | 104.23 | 104.91 | 104.66 | 101.81  | 102.03  | 101.7 | 103.29 | 106.74 | 103.35 | 104.57 | 101.37 | 101.48 | 102.9 | <b>Aug</b>  |
| 107.67                      | 103.98 | 103.65 | 106.33 | 104.86 | 102.30  | 101.89  | 101.8 | 103.71 | 106.80 | 103.68 | 104.36 | 101.47 | 101.97 | 103.0 | <b>Sep</b>  |
| 108.09                      | 105.02 | 103.08 | 106.81 | 104.30 | 102.12  | 101.82  | 101.8 | 103.73 | 107.02 | 102.91 | 104.38 | 101.62 | 102.17 | 103.2 | <b>Oct</b>  |
| 109.15                      | 105.84 | 103.19 | 107.04 | 100.71 | 102.10  | 101.95  | 101.8 | 103.74 | 108.19 | 103.23 | 104.94 | 101.62 | 102.18 | 103.4 | <b>Nov</b>  |
| 109.49                      | 106.07 | 103.28 | 107.17 | 100.62 | 101.75  | 102.33  | 101.6 | 103.93 | 108.99 | 103.67 | 105.01 | 101.65 | 102.16 | 104.0 | <b>Dec</b>  |
| <b>Monthly Index - 2007</b> |        |        |        |        |         |         |       |        |        |        |        |        |        |       |             |
| 111.02                      | 106.09 | 102.93 | 109.03 | 99.49  | 101.50  | 102.41  | 101.9 | 103.62 | 109.23 | 103.12 | 105.53 | 101.31 | 101.64 | 103.2 | <b>Jan</b>  |
| 111.63                      | 106.49 | 104.01 | 109.99 | 99.72  | 102.16  | 102.72  | 102.2 | 103.58 | 109.28 | 103.00 | 105.63 | 101.95 | 102.11 | 103.7 | <b>Feb</b>  |
| 113.14                      | 107.10 | 104.72 | 110.64 | 100.49 | 103.47  | 103.21  | 102.8 | 104.88 | 109.37 | 104.10 | 105.70 | 102.70 | 102.69 | 104.2 | <b>Mar</b>  |
| 114.21                      | 108.02 | 105.33 | 111.15 | 103.04 | 104.05  | 103.65  | 103.3 | 105.85 | 109.94 | 105.27 | 105.99 | 103.17 | 103.17 | 104.5 | <b>Apr</b>  |
| 115.06                      | 108.55 | 105.79 | 112.05 | 103.76 | 104.09  | 103.83  | 103.9 | 106.04 | 110.64 | 106.47 | 106.01 | 102.85 | 103.03 | 104.8 | <b>May</b>  |
| 116.04                      | 108.83 | 106.04 | 112.47 | 103.96 | 103.55  | 103.82  | 104.1 | 106.00 | 110.82 | 106.84 | 106.08 | 103.00 | 103.15 | 105.0 | <b>Jun</b>  |
| 117.42                      | 109.51 | 105.19 | 112.47 | 104.72 | 102.77  | 103.76  | 103.9 | 105.74 | 111.15 | 106.74 | 105.96 | 102.72 | 102.83 | 104.4 | <b>Jul</b>  |
| 117.88                      | 109.90 | 106.17 | 112.41 | 105.28 | 102.89  | 103.80  | 103.8 | 105.30 | 112.11 | 106.90 | 105.87 | 102.73 | 102.71 | 104.7 | <b>Aug</b>  |
| 120.05                      | 111.40 | 106.24 | 113.18 | 105.81 | 103.60  | 104.05  | 104.5 | 105.75 | 113.33 | 107.38 | 106.17 | 103.19 | 103.57 | 104.8 | <b>Sep</b>  |
| 122.41                      | 113.04 | 106.81 | 114.13 | 105.92 | 103.76p | 104.74p | 105.0 | 106.30 | 114.43 | 108.17 | 106.91 | 103.49 | 104.09 | 105.3 | <b>Oct</b>  |
|                             |        |        |        |        |         |         |       |        |        |        |        |        |        |       | <b>Nov</b>  |
|                             |        |        |        |        |         |         |       |        |        |        |        |        |        |       | <b>Dec</b>  |

p provisional

TABLE II  
**HARMONIZED INDICES OF CONSUMER PRICES**  
 RATES OF CHANGE (%)

|                                      | Euro area | EICP | BE  | BG   | CZ  | DK  | DE  | EE  | IE  | EL  | ES  | FR  | IT  | CY  |
|--------------------------------------|-----------|------|-----|------|-----|-----|-----|-----|-----|-----|-----|-----|-----|-----|
| <b>Annual Average Rate of Change</b> |           |      |     |      |     |     |     |     |     |     |     |     |     |     |
| 2004/12                              | 2.1       | 2.0  | 1.9 | 6.1  | 2.6 | 0.9 | 1.8 | 3.0 | 2.3 | 3.0 | 3.1 | 2.3 | 2.3 | 1.9 |
| 2005/12                              | 2.2       | 2.2  | 2.5 | 6.0  | 1.6 | 1.7 | 1.9 | 4.1 | 2.2 | 3.5 | 3.4 | 1.9 | 2.2 | 2.0 |
| 2006/12                              | 2.2       | 2.2  | 2.3 | 7.4  | 2.1 | 1.9 | 1.8 | 4.4 | 2.7 | 3.3 | 3.6 | 1.9 | 2.2 | 2.2 |
| 2007/10                              | 1.9p      | 2.2p | 1.7 | 6.6  | 2.3 | 1.5 | 2.0 | 6.0 | 2.8 | 2.9 | 2.6 | 1.4 | 1.9 | 1.8 |
| <b>Annual Rate of Change - 2005</b>  |           |      |     |      |     |     |     |     |     |     |     |     |     |     |
| Jan                                  | 1.9       | 2.0  | 2.0 | 3.2  | 1.5 | 0.8 | 1.6 | 4.2 | 2.1 | 4.2 | 3.1 | 1.6 | 2.0 | 2.8 |
| Feb                                  | 2.1       | 2.1  | 2.3 | 3.8  | 1.4 | 1.0 | 1.9 | 4.6 | 2.1 | 3.2 | 3.3 | 1.9 | 2.0 | 2.4 |
| Mar                                  | 2.1       | 2.1  | 2.8 | 4.4  | 1.1 | 1.3 | 1.6 | 4.8 | 1.9 | 2.9 | 3.4 | 2.1 | 2.2 | 2.4 |
| Apr                                  | 2.1       | 2.1  | 2.4 | 5.3  | 1.4 | 1.7 | 1.4 | 4.7 | 2.2 | 3.3 | 3.5 | 2.0 | 2.1 | 2.7 |
| May                                  | 2.0       | 2.0  | 2.3 | 5.1  | 0.9 | 1.2 | 1.6 | 2.9 | 2.1 | 3.2 | 3.0 | 1.7 | 2.3 | 2.1 |
| Jun                                  | 2.1       | 2.0  | 2.7 | 6.5  | 1.3 | 1.7 | 1.8 | 3.2 | 1.9 | 3.2 | 3.2 | 1.8 | 2.1 | 1.5 |
| Jul                                  | 2.2       | 2.1  | 2.7 | 6.0  | 1.4 | 1.8 | 1.8 | 3.9 | 2.2 | 3.9 | 3.3 | 1.8 | 2.1 | 1.3 |
| Aug                                  | 2.2       | 2.2  | 2.9 | 7.2  | 1.4 | 2.4 | 1.9 | 4.2 | 2.1 | 3.6 | 3.3 | 2.0 | 2.1 | 1.5 |
| Sep                                  | 2.6       | 2.5  | 3.0 | 7.5  | 2.0 | 2.3 | 2.5 | 4.9 | 2.7 | 3.8 | 3.8 | 2.4 | 2.2 | 2.1 |
| Oct                                  | 2.5       | 2.4  | 2.2 | 8.2  | 2.4 | 1.9 | 2.3 | 4.5 | 2.6 | 3.7 | 3.5 | 2.0 | 2.6 | 2.2 |
| Nov                                  | 2.3       | 2.3  | 2.3 | 8.0  | 2.2 | 1.8 | 2.2 | 4.0 | 2.2 | 3.4 | 3.4 | 1.8 | 2.4 | 2.0 |
| Dec                                  | 2.2       | 2.1  | 2.8 | 7.4  | 1.9 | 2.2 | 2.1 | 3.6 | 1.9 | 3.5 | 3.7 | 1.8 | 2.1 | 1.4 |
| <b>Annual Rate of Change - 2006</b>  |           |      |     |      |     |     |     |     |     |     |     |     |     |     |
| Jan                                  | 2.4       | 2.3  | 2.8 | 7.6  | 2.4 | 2.0 | 2.1 | 4.7 | 2.5 | 3.0 | 4.2 | 2.3 | 2.2 | 2.0 |
| Feb                                  | 2.3       | 2.2  | 2.8 | 9.4  | 2.4 | 2.1 | 2.1 | 4.5 | 2.7 | 3.1 | 4.1 | 2.0 | 2.2 | 2.3 |
| Mar                                  | 2.2       | 2.1  | 2.2 | 9.1  | 2.4 | 1.8 | 1.9 | 4.0 | 2.8 | 3.3 | 3.9 | 1.7 | 2.2 | 2.6 |
| Apr                                  | 2.5       | 2.3  | 2.6 | 8.5  | 2.3 | 1.8 | 2.3 | 4.3 | 2.7 | 3.5 | 3.9 | 2.0 | 2.3 | 2.5 |
| May                                  | 2.5       | 2.4  | 2.8 | 9.0  | 2.8 | 2.1 | 2.1 | 4.6 | 3.0 | 3.3 | 4.1 | 2.4 | 2.3 | 2.5 |
| Jun                                  | 2.5       | 2.4  | 2.5 | 8.4  | 2.3 | 2.1 | 2.0 | 4.4 | 2.9 | 3.4 | 4.0 | 2.2 | 2.4 | 2.6 |
| Jul                                  | 2.4       | 2.4  | 2.4 | 7.8  | 2.4 | 2.0 | 2.1 | 4.5 | 2.9 | 3.9 | 4.0 | 2.2 | 2.3 | 2.8 |
| Aug                                  | 2.3       | 2.3  | 2.3 | 7.0  | 2.6 | 1.9 | 1.8 | 5.0 | 3.2 | 3.4 | 3.8 | 2.1 | 2.3 | 2.7 |
| Sep                                  | 1.7       | 1.9  | 1.9 | 5.4  | 2.2 | 1.5 | 1.0 | 3.8 | 2.2 | 3.1 | 2.9 | 1.5 | 2.4 | 2.2 |
| Oct                                  | 1.6       | 1.8  | 1.7 | 5.2  | 0.8 | 1.4 | 1.1 | 3.8 | 2.2 | 3.1 | 2.6 | 1.2 | 1.9 | 1.7 |
| Nov                                  | 1.9       | 2.1  | 2.0 | 5.9  | 1.0 | 1.8 | 1.5 | 4.7 | 2.4 | 3.2 | 2.7 | 1.6 | 2.0 | 1.3 |
| Dec                                  | 1.9       | 2.2  | 2.1 | 6.1  | 1.5 | 1.7 | 1.4 | 5.1 | 3.0 | 3.2 | 2.7 | 1.7 | 2.1 | 1.5 |
| <b>Annual Rate of Change - 2007</b>  |           |      |     |      |     |     |     |     |     |     |     |     |     |     |
| Jan                                  | 1.8       | 2.1  | 1.7 | 6.8  | 1.4 | 1.8 | 1.8 | 5.0 | 2.9 | 3.0 | 2.4 | 1.4 | 1.9 | 1.4 |
| Feb                                  | 1.8       | 2.1  | 1.8 | 4.6  | 1.7 | 1.9 | 1.9 | 4.6 | 2.6 | 3.0 | 2.5 | 1.2 | 2.1 | 1.2 |
| Mar                                  | 1.9       | 2.3  | 1.8 | 4.4  | 2.1 | 1.9 | 2.0 | 5.6 | 2.9 | 2.8 | 2.5 | 1.2 | 2.1 | 1.4 |
| Apr                                  | 1.9       | 2.2  | 1.8 | 4.4  | 2.7 | 1.7 | 2.0 | 5.6 | 2.9 | 2.6 | 2.5 | 1.3 | 1.8 | 1.6 |
| May                                  | 1.9       | 2.1  | 1.3 | 4.5  | 2.4 | 1.7 | 2.0 | 5.9 | 2.7 | 2.6 | 2.4 | 1.2 | 1.9 | 1.9 |
| Jun                                  | 1.9       | 2.1  | 1.3 | 5.3  | 2.6 | 1.3 | 2.0 | 6.0 | 2.8 | 2.6 | 2.5 | 1.3 | 1.9 | 1.7 |
| Jul                                  | 1.8       | 2.0  | 1.3 | 6.8  | 2.5 | 1.1 | 2.0 | 6.5 | 2.7 | 2.7 | 2.3 | 1.2 | 1.7 | 2.3 |
| Aug                                  | 1.7       | 1.9  | 1.2 | 9.3  | 2.6 | 0.9 | 2.0 | 6.1 | 2.3 | 2.7 | 2.2 | 1.3 | 1.7 | 2.2 |
| Sep                                  | 2.1       | 2.2  | 1.4 | 11.0 | 2.8 | 1.2 | 2.7 | 7.5 | 2.9 | 2.9 | 2.7 | 1.6 | 1.7 | 2.3 |
| Oct                                  | 2.6p      | 2.7p | 2.2 | 10.6 | 4.0 | 1.8 | 2.7 | 8.7 | 3.0 | 3.0 | 3.6 | 2.1 | 2.3 | 2.7 |
| Nov                                  |           |      |     |      |     |     |     |     |     |     |     |     |     |     |
| Dec                                  |           |      |     |      |     |     |     |     |     |     |     |     |     |     |

p provisional

TABLE II  
HARMONIZED INDICES OF CONSUMER PRICES  
RATES OF CHANGE (%)

| LV                                   | LT  | LU  | HU  | MT   | NL   | AT   | PL  | PT  | RO   | SI  | SK  | FI   | SE  | UK  |         |
|--------------------------------------|-----|-----|-----|------|------|------|-----|-----|------|-----|-----|------|-----|-----|---------|
| <b>Annual Average Rate of Change</b> |     |     |     |      |      |      |     |     |      |     |     |      |     |     |         |
| 6.2                                  | 1.2 | 3.2 | 6.8 | 2.7  | 1.4  | 2.0  | 3.6 | 2.5 | 11.9 | 3.7 | 7.5 | 0.1  | 1.0 | 1.3 | 2004/12 |
| 6.9                                  | 2.7 | 3.8 | 3.5 | 2.5  | 1.5  | 2.1  | 2.2 | 2.1 | 9.1  | 2.5 | 2.8 | 0.8  | 0.8 | 2.1 | 2005/12 |
| 6.6                                  | 3.8 | 3.0 | 4.0 | 2.6  | 1.7  | 1.7  | 1.3 | 3.0 | 6.6  | 2.5 | 4.3 | 1.3  | 1.5 | 2.3 | 2006/12 |
| 8.9                                  | 5.2 | 2.3 | 7.8 | 0.3  | 1.6p | 1.9p | 2.2 | 2.4 | 4.6  | 3.3 | 2.1 | 1.5  | 1.5 | 2.4 | 2007/10 |
| <b>Annual Rate of Change - 2005</b>  |     |     |     |      |      |      |     |     |      |     |     |      |     |     |         |
| 6.7                                  | 2.8 | 2.9 | 4.0 | 1.9  | 1.2  | 2.4  | 3.8 | 2.0 | 8.9  | 2.3 | 3.2 | -0.2 | 0.5 | 1.6 | Jan     |
| 7.0                                  | 3.2 | 3.2 | 3.4 | 2.5  | 1.5  | 2.3  | 3.6 | 2.1 | 8.9  | 2.8 | 2.7 | 0.0  | 1.2 | 1.7 | Feb     |
| 6.6                                  | 3.2 | 3.5 | 3.3 | 2.6  | 1.5  | 2.4  | 3.4 | 2.3 | 8.7  | 3.3 | 2.4 | 0.9  | 0.5 | 1.9 | Mar     |
| 7.1                                  | 3.2 | 3.7 | 3.8 | 2.0  | 1.3  | 2.3  | 3.1 | 2.0 | 10.0 | 2.7 | 2.7 | 1.2  | 0.4 | 1.9 | Apr     |
| 6.5                                  | 1.9 | 3.7 | 3.5 | 2.4  | 1.0  | 2.0  | 2.1 | 1.8 | 10.0 | 2.1 | 2.4 | 0.6  | 0.2 | 1.9 | May     |
| 6.6                                  | 2.0 | 3.2 | 3.7 | 2.1  | 1.5  | 2.0  | 1.4 | 0.6 | 9.7  | 1.7 | 2.6 | 1.0  | 0.8 | 2.0 | Jun     |
| 6.3                                  | 1.9 | 4.0 | 3.6 | 1.7  | 1.5  | 2.1  | 1.5 | 1.9 | 9.4  | 2.0 | 2.1 | 0.9  | 0.7 | 2.3 | Jul     |
| 6.3                                  | 2.3 | 4.3 | 3.5 | 2.5  | 1.6  | 1.9  | 1.8 | 2.5 | 8.9  | 1.8 | 2.1 | 1.0  | 1.1 | 2.4 | Aug     |
| 7.4                                  | 2.5 | 4.7 | 3.6 | 2.0  | 1.7  | 2.6  | 1.9 | 2.7 | 8.5  | 3.2 | 2.3 | 1.1  | 1.1 | 2.5 | Sep     |
| 7.7                                  | 3.0 | 5.0 | 3.1 | 3.0  | 1.5  | 2.0  | 1.6 | 2.6 | 8.2  | 3.2 | 3.5 | 0.8  | 0.9 | 2.3 | Oct     |
| 7.6                                  | 2.9 | 3.6 | 3.3 | 4.3  | 1.6  | 1.7  | 1.1 | 2.5 | 8.7  | 2.1 | 3.6 | 1.0  | 1.2 | 2.1 | Nov     |
| 7.1                                  | 3.0 | 3.4 | 3.3 | 3.4  | 2.0  | 1.6  | 0.8 | 2.5 | 8.7  | 2.4 | 3.9 | 1.1  | 1.3 | 1.9 | Dec     |
| <b>Annual Rate of Change - 2006</b>  |     |     |     |      |      |      |     |     |      |     |     |      |     |     |         |
| 7.6                                  | 3.5 | 4.1 | 2.5 | 2.4  | 1.8  | 1.5  | 0.9 | 2.7 | 9.0  | 2.6 | 4.1 | 1.2  | 1.1 | 1.9 | Jan     |
| 7.0                                  | 3.4 | 3.9 | 2.3 | 2.3  | 1.4  | 1.5  | 0.9 | 3.0 | 8.6  | 2.3 | 4.3 | 1.3  | 1.1 | 2.0 | Feb     |
| 6.6                                  | 3.1 | 3.7 | 2.4 | 2.9  | 1.4  | 1.3  | 0.9 | 3.8 | 8.5  | 2.0 | 4.3 | 1.2  | 1.5 | 1.8 | Mar     |
| 6.1                                  | 3.4 | 3.5 | 2.4 | 3.5  | 1.8  | 2.1  | 1.2 | 3.7 | 7.0  | 2.8 | 4.4 | 1.5  | 1.8 | 2.0 | Apr     |
| 7.1                                  | 3.6 | 3.6 | 2.9 | 3.5  | 1.8  | 2.1  | 1.5 | 3.7 | 7.3  | 3.4 | 4.8 | 1.7  | 1.9 | 2.2 | May     |
| 6.3                                  | 3.7 | 3.9 | 2.9 | 3.3  | 1.8  | 1.9  | 1.5 | 3.5 | 7.2  | 3.0 | 4.5 | 1.5  | 1.9 | 2.5 | Jun     |
| 6.9                                  | 4.4 | 3.4 | 3.2 | 3.6  | 1.7  | 2.0  | 1.4 | 3.0 | 6.2  | 1.9 | 5.0 | 1.4  | 1.8 | 2.4 | Jul     |
| 6.8                                  | 4.3 | 3.1 | 4.7 | 3.0  | 1.9  | 2.1  | 1.7 | 2.7 | 6.1  | 3.1 | 5.0 | 1.3  | 1.6 | 2.5 | Aug     |
| 5.9                                  | 3.3 | 2.0 | 5.9 | 3.1  | 1.5  | 1.3  | 1.4 | 3.0 | 5.5  | 2.5 | 4.5 | 0.8  | 1.2 | 2.4 | Sep     |
| 5.6                                  | 3.7 | 0.6 | 6.3 | 1.7  | 1.3  | 1.3  | 1.1 | 2.6 | 4.8  | 1.5 | 3.1 | 0.9  | 1.2 | 2.4 | Oct     |
| 6.3                                  | 4.4 | 1.8 | 6.4 | 0.9  | 1.6  | 1.6  | 1.3 | 2.4 | 4.7  | 2.4 | 3.7 | 1.3  | 1.5 | 2.7 | Nov     |
| 6.8                                  | 4.5 | 2.3 | 6.6 | 0.8  | 1.7  | 1.6  | 1.4 | 2.5 | 4.9  | 3.0 | 3.7 | 1.2  | 1.4 | 3.0 | Dec     |
| <b>Annual Rate of Change - 2007</b>  |     |     |     |      |      |      |     |     |      |     |     |      |     |     |         |
| 7.1                                  | 4.0 | 2.3 | 8.4 | 1.2  | 1.2  | 1.7  | 1.6 | 2.6 | 4.1  | 2.8 | 2.2 | 1.3  | 1.6 | 2.7 | Jan     |
| 7.2                                  | 4.4 | 1.8 | 9.0 | 0.8  | 1.4  | 1.7  | 1.9 | 2.3 | 3.9  | 2.3 | 2.0 | 1.2  | 1.7 | 2.8 | Feb     |
| 8.5                                  | 4.8 | 2.4 | 9.0 | 0.5  | 1.9  | 1.9  | 2.4 | 2.4 | 3.7  | 2.6 | 2.1 | 1.6  | 1.6 | 3.1 | Mar     |
| 8.8                                  | 4.9 | 2.5 | 8.7 | -1.1 | 1.9  | 1.8  | 2.2 | 2.8 | 3.8  | 2.9 | 2.0 | 1.5  | 1.6 | 2.8 | Apr     |
| 7.8                                  | 5.0 | 2.3 | 8.4 | -1.0 | 2.0  | 1.9  | 2.3 | 2.4 | 3.9  | 3.1 | 1.5 | 1.3  | 1.2 | 2.5 | May     |
| 8.9                                  | 5.0 | 2.3 | 8.5 | -0.6 | 1.8  | 1.9  | 2.6 | 2.4 | 3.9  | 3.8 | 1.5 | 1.4  | 1.3 | 2.4 | Jun     |
| 9.5                                  | 5.1 | 2.0 | 8.3 | -0.2 | 1.4  | 2.0  | 2.5 | 2.3 | 4.1  | 4.0 | 1.2 | 1.6  | 1.4 | 1.9 | Jul     |
| 10.2                                 | 5.6 | 1.9 | 7.1 | 0.6  | 1.1  | 1.7  | 2.1 | 1.9 | 5.0  | 3.4 | 1.2 | 1.3  | 1.2 | 1.8 | Aug     |
| 11.5                                 | 7.1 | 2.5 | 6.4 | 0.9  | 1.3  | 2.1  | 2.7 | 2.0 | 6.1  | 3.6 | 1.7 | 1.7  | 1.6 | 1.8 | Sep     |
| 13.2                                 | 7.6 | 3.6 | 6.9 | 1.6  | 1.6p | 2.9p | 3.1 | 2.5 | 6.9  | 5.1 | 2.4 | 1.8  | 1.9 | 2.1 | Oct     |
|                                      |     |     |     |      |      |      |     |     |      |     |     |      |     |     | Nov     |
|                                      |     |     |     |      |      |      |     |     |      |     |     |      |     |     | Dec     |

p provisional

TABLE III  
HARMONIZED INDICES OF CONSUMER  
PRICES  
INDEX NUMBERS 2005 = 100

|                             | EEA     | IS     | NO    | CH**  |
|-----------------------------|---------|--------|-------|-------|
| <b>Annual Average Index</b> |         |        |       |       |
| 2004                        | 97.89   | 98.64  | 98.5  | 98.8  |
| 2005                        | 100.00  | 100.00 | 100.0 | 100.0 |
| 2006                        | 102.21  | 104.65 | 102.5 | 101.0 |
| <b>Monthly Index - 2005</b> |         |        |       |       |
| Jan                         | 98.42   | 99.71  | 98.7  | 99.1  |
| Feb                         | 98.73   | 99.56  | 98.7  | 99.3  |
| Mar                         | 99.32   | 99.94  | 99.2  | 99.6  |
| Apr                         | 99.73   | 99.48  | 99.7  | 100.4 |
| May                         | 100.00  | 99.17  | 100.1 | 100.3 |
| Jun                         | 100.08  | 99.56  | 100.3 | 100.0 |
| Jul                         | 100.02  | 99.40  | 99.9  | 99.5  |
| Aug                         | 100.26  | 99.17  | 100.1 | 99.6  |
| Sep                         | 100.71  | 100.79 | 100.8 | 100.1 |
| Oct                         | 100.95  | 101.25 | 100.8 | 100.9 |
| Nov                         | 100.75  | 100.87 | 100.8 | 100.7 |
| Dec                         | 101.03  | 101.10 | 100.8 | 100.6 |
| <b>Monthly Index - 2006</b> |         |        |       |       |
| Jan                         | 100.64  | 101.01 | 100.5 | 100.4 |
| Feb                         | 100.93  | 100.78 | 101.4 | 100.7 |
| Mar                         | 101.42  | 101.93 | 101.6 | 100.6 |
| Apr                         | 102.08  | 102.72 | 102.5 | 101.4 |
| May                         | 102.43  | 103.92 | 102.6 | 101.6 |
| Jun                         | 102.53  | 105.27 | 102.4 | 101.6 |
| Jul                         | 102.43  | 105.71 | 102.2 | 100.9 |
| Aug                         | 102.60  | 106.17 | 102.2 | 101.1 |
| Sep                         | 102.66  | 106.95 | 103.8 | 100.9 |
| Oct                         | 102.75  | 107.14 | 103.8 | 101.2 |
| Nov                         | 102.83  | 107.06 | 103.6 | 101.2 |
| Dec                         | 103.21  | 107.08 | 103.0 | 101.2 |
| <b>Monthly Index - 2007</b> |         |        |       |       |
| Jan                         | 102.75  | 107.38 | 101.7 | 100.5 |
| Feb                         | 103.08  | 107.49 | 102.2 | 100.7 |
| Mar                         | 103.71  | 106.77 | 102.9 | 100.7 |
| Apr                         | 104.29  | 107.06 | 103.0 | 101.9 |
| May                         | 104.57  | 108.09 | 103.2 | 102.1 |
| Jun                         | 104.70  | 108.47 | 103.1 | 102.2 |
| Jul                         | 104.42  | 108.43 | 102.9 | 101.6 |
| Aug                         | 104.55  | 108.07 | 102.8 | 101.5 |
| Sep                         | 104.94  | 109.24 | 103.5 | 101.6 |
| Oct                         | 105.47p | 109.63 | 103.5 | 102.5 |
| Nov                         |         |        |       |       |
| Dec                         |         |        |       |       |

TABLE IV  
HARMONIZED INDICES OF CONSUMER  
PRICES  
RATES OF CHANGE (%)

|                                      | EEA | IS   | NO  | CH**    |  |
|--------------------------------------|-----|------|-----|---------|--|
| <b>Annual Average Rate of Change</b> |     |      |     |         |  |
| 2.0                                  | 2.3 | 0.6  | 0.8 | 2004/12 |  |
| 2.2                                  | 1.4 | 1.5  | 1.2 | 2005/12 |  |
| 2.2                                  | 4.6 | 2.5  | 1.1 | 2006/12 |  |
| 2.1p                                 | 4.1 | 0.9  | 0.5 | 2007/10 |  |
| <b>Annual Rate of Change - 2005</b>  |     |      |     |         |  |
| 2.0                                  | 2.6 | 1.0  | 1.2 | Jan     |  |
| 2.1                                  | 2.9 | 0.8  | 1.4 | Feb     |  |
| 2.1                                  | 2.4 | 0.8  | 1.5 | Mar     |  |
| 2.1                                  | 1.6 | 1.1  | 1.4 | Apr     |  |
| 2.0                                  | 0.5 | 1.4  | 1.1 | May     |  |
| 2.0                                  | 0.4 | 1.6  | 0.6 | Jun     |  |
| 2.1                                  | 0.5 | 1.3  | 1.2 | Jul     |  |
| 2.2                                  | 0.4 | 1.8  | 0.9 | Aug     |  |
| 2.5                                  | 1.6 | 2.1  | 1.4 | Sep     |  |
| 2.4                                  | 1.5 | 1.8  | 1.3 | Oct     |  |
| 2.2                                  | 1.1 | 1.8  | 1.0 | Nov     |  |
| 2.1                                  | 1.0 | 2.0  | 1.0 | Dec     |  |
| <b>Annual Rate of Change - 2006</b>  |     |      |     |         |  |
| 2.3                                  | 1.3 | 1.8  | 1.3 | Jan     |  |
| 2.2                                  | 1.2 | 2.7  | 1.4 | Feb     |  |
| 2.1                                  | 2.0 | 2.4  | 1.0 | Mar     |  |
| 2.4                                  | 3.3 | 2.8  | 1.1 | Apr     |  |
| 2.4                                  | 4.8 | 2.5  | 1.4 | May     |  |
| 2.4                                  | 5.7 | 2.1  | 1.6 | Jun     |  |
| 2.4                                  | 6.3 | 2.3  | 1.4 | Jul     |  |
| 2.3                                  | 7.1 | 2.1  | 1.5 | Aug     |  |
| 1.9                                  | 6.1 | 3.0  | 0.8 | Sep     |  |
| 1.8                                  | 5.8 | 3.0  | 0.3 | Oct     |  |
| 2.1                                  | 6.1 | 2.8  | 0.5 | Nov     |  |
| 2.2                                  | 5.9 | 2.2  | 0.6 | Dec     |  |
| <b>Annual Rate of Change - 2007</b>  |     |      |     |         |  |
| 2.1                                  | 6.3 | 1.2  | 0.1 | Jan     |  |
| 2.1                                  | 6.7 | 0.8  | 0.0 | Feb     |  |
| 2.3                                  | 4.7 | 1.3  | 0.2 | Mar     |  |
| 2.2                                  | 4.2 | 0.5  | 0.5 | Apr     |  |
| 2.1                                  | 4.0 | 0.6  | 0.5 | May     |  |
| 2.1                                  | 3.0 | 0.7  | 0.6 | Jun     |  |
| 1.9                                  | 2.6 | 0.7  | 0.7 | Jul     |  |
| 1.9                                  | 1.8 | 0.6  | 0.4 | Aug     |  |
| 2.2                                  | 2.1 | -0.3 | 0.7 | Sep     |  |
| 2.6p                                 | 2.3 | -0.3 | 1.3 | Oct     |  |
|                                      |     |      |     | Nov     |  |
|                                      |     |      |     | Dec     |  |

p provisional \*\* national CPI

TABLE V

## MAIN CATEGORIES OF HARMONIZED INDICES OF CONSUMER PRICES

October 2007 / October 2006

ANNUAL RATES OF CHANGE (%)

|                  | 00.  | 01.  | 02.  | 03.   | 04.  | 05.  | 06.  | 07.  | 08.   | 09.   | 10.  | 11.  | 12.  |
|------------------|------|------|------|-------|------|------|------|------|-------|-------|------|------|------|
| <b>Euro area</b> | 2.6p | 3.8p | 2.5p | 1.1p  | 2.7p | 1.9p | 1.4p | 4.1p | -2.1p | 0.0p  | 9.5p | 3.2p | 2.2p |
| <b>EICP</b>      | 2.7p | 4.6p | 3.4p | 0.0p  | 2.9p | 1.8p | 2.0p | 4.3p | -2.3p | -0.2p | 9.7p | 3.5p | 2.1p |
| <b>BE</b>        | 2.2  | 4.0  | 4.9  | 0.6   | 1.7  | 2.7  | -0.6 | 3.6  | -4.6  | 1.0   | 2.0  | 1.6  | 3.4  |
| <b>BG</b>        | 10.6 | 22.6 | -2.5 | 9.5   | 7.5  | 4.4  | 4.0  | 8.8  | 0.0   | 3.6   | 9.0  | 16.3 | 10.8 |
| <b>CZ</b>        | 4.0  | 6.2  | 15.0 | 0.6   | 6.0  | -0.1 | 2.1  | 1.7  | -2.9  | 0.7   | 2.0  | 3.2  | 2.0  |
| <b>DK</b>        | 1.8  | 5.4  | 1.5  | -3.0  | 1.5  | 1.3  | -1.4 | 2.7  | -0.1  | 1.3   | 4.7  | 2.7  | -0.2 |
| <b>DE</b>        | 2.7  | 4.5  | 0.6  | 0.7   | 2.2  | 1.6  | 1.3  | 5.0  | 0.4   | 0.6   | 29.1 | 2.9  | 2.2  |
| <b>EE</b>        | 8.7  | 12.4 | 3.9  | 5.5   | 15.1 | 3.9  | 10.0 | 8.2  | -0.3  | 5.1   | 6.1  | 11.0 | 7.6  |
| <b>IE</b>        | 3.0  | 4.4  | 5.4  | -3.6  | 6.0  | -2.2 | 3.0  | 3.1  | 1.0   | 1.1   | 5.2  | 4.1  | 2.0  |
| <b>EL</b>        | 3.0  | 3.2  | 0.6  | 2.9   | 4.0  | 2.3  | 3.1  | 4.2  | -3.2  | 1.2   | 4.5  | 4.5  | 2.6  |
| <b>ES</b>        | 3.6  | 5.5  | 6.6  | 0.9   | 4.2  | 2.5  | -2.1 | 5.0  | 0.6   | -0.8  | 4.5  | 4.8  | 3.1  |
| <b>FR</b>        | 2.1  | 2.3  | 3.8  | 0.7   | 3.2  | 1.2  | 1.5  | 4.0  | 0.2   | -1.6  | 2.8  | 2.8  | 1.9  |
| <b>IT</b>        | 2.3  | 3.5  | 2.5  | 1.8   | 2.3  | 2.8  | 2.5  | 3.5  | -10.0 | 1.1   | 2.5  | 2.7  | 2.3  |
| <b>CY</b>        | 2.7  | 2.3  | 0.0  | 1.3   | 4.5  | 0.6  | 4.9  | 2.5  | 1.1   | 1.4   | 4.8  | 4.7  | 2.4  |
| <b>LV</b>        | 13.2 | 17.3 | 18.9 | 3.9   | 22.1 | 4.9  | 8.6  | 12.4 | -6.6  | 5.0   | 18.7 | 18.3 | 12.7 |
| <b>LT</b>        | 7.6  | 15.6 | 7.4  | -5.3  | 12.4 | 2.5  | 7.8  | 6.6  | -7.2  | -0.2  | 9.7  | 9.8  | 4.9  |
| <b>LU</b>        | 3.6  | 4.2  | 4.6  | 0.8   | 4.9  | 2.4  | 0.5  | 5.1  | -1.4  | 0.4   | 1.7  | 3.5  | 3.6  |
| <b>HU</b>        | 6.9  | 12.6 | 5.4  | 0.6   | 9.7  | 0.6  | 23.1 | 4.8  | -1.7  | 3.0   | 5.3  | 5.8  | 3.7  |
| <b>MT</b>        | 1.6  | 6.6  | 1.1  | 7.8   | -0.3 | 1.0  | 2.5  | -1.6 | 0.0   | -0.8  | 6.0  | 0.2  | 0.9  |
| <b>NL</b>        | 1.6p | 2.4p | 2.0p | -1.2p | 1.9p | 1.7p | 1.1p | 4.1p | -3.4p | -0.4p | 0.8p | 3.7p | 1.7p |
| <b>AT</b>        | 2.9p | 6.2p | 2.5p | 5.0p  | 3.5p | 1.8p | 2.3p | 1.8p | 1.7p  | 1.0p  | 2.5p | 2.5p | 2.5p |
| <b>PL</b>        | 3.1  | 5.9  | 4.9  | -7.1  | 4.6  | 1.7  | 2.4  | 5.6  | -1.7  | -2.0  | 2.4  | 4.1  | 1.7  |
| <b>PT</b>        | 2.5  | 2.4  | 6.3  | 2.8   | 3.3  | 1.5  | 6.8  | 2.3  | -1.8  | 0.7   | 4.5  | 1.8  | 1.8  |
| <b>RO</b>        | 6.9  | 9.8  | 9.9  | 3.1   | 11.5 | 1.9  | -3.3 | 3.4  | -6.2  | 1.9   | 3.0  | 4.5  | 4.5  |
| <b>SI</b>        | 5.1  | 12.3 | 7.1  | 1.6   | 7.4  | 3.6  | 1.5  | 0.4  | -0.4  | 4.3   | 3.3  | 7.6  | 3.7  |
| <b>SK</b>        | 2.4  | 6.4  | 2.1  | 0.7   | 2.2  | -0.3 | -0.5 | 0.2  | 3.0   | 0.5   | 3.6  | 3.2  | 2.3  |
| <b>FI</b>        | 1.8  | 2.1  | 1.8  | -0.4  | 3.5  | 0.9  | 0.4  | 1.3  | 8.3   | -0.2  | 4.0  | 2.5  | 1.8  |
| <b>SE</b>        | 1.9  | 2.7  | 7.9  | 3.0   | -0.8 | 0.8  | 3.4  | 3.1  | -2.4  | -0.3  | 2.4  | 3.7  | 3.7  |
| <b>UK</b>        | 2.1  | 4.7  | 2.7  | -4.3  | 1.4  | 1.8  | 3.2  | 5.1  | -4.2  | -0.9  | 13.2 | 3.5  | 1.3  |
| <b>EEA</b>       | 2.6p | 4.6p | 3.4p | 0.0p  | 2.7p | 1.9p | 2.0p | 4.3p | -2.3p | -0.2p | 9.6p | 3.5p | 2.1p |
| <b>IS</b>        | 2.3  | -4.0 | 2.0  | -0.1  | 7.0  | 1.3  | 3.4  | 4.4  | 2.9   | 1.2   | 2.9  | 1.3  | 7.3  |
| <b>NO</b>        | -0.3 | 2.3  | 1.2  | -4.9  | -7.8 | 2.8  | 2.7  | 2.2  | 1.2   | 0.4   | 1.3  | 4.3  | 2.3  |

p provisional

**COICOP/HICP Code**

- |            |   |            |                                  |
|------------|---|------------|----------------------------------|
| <b>00.</b> | HICP (all-items index)  | <b>06.</b> | Health                           |
| <b>01.</b> | Food and non-alcoholic beverages                                      | <b>07.</b> | Transports                       |
| <b>02.</b> | Alcoholic beverages and tobacco                                       | <b>08.</b> | Communications                   |
| <b>03.</b> | Clothing and footwear   | <b>09.</b> | Recreation and culture           |
| <b>04.</b> | Housing, water, electricity, gas and other fuels                      | <b>10.</b> | Education                        |
| <b>05.</b> | Furnishings, household equipment and routine maintenance of the house | <b>11.</b> | Restaurants and hotels           |
|            |   | <b>12.</b> | Miscellaneous goods and services |

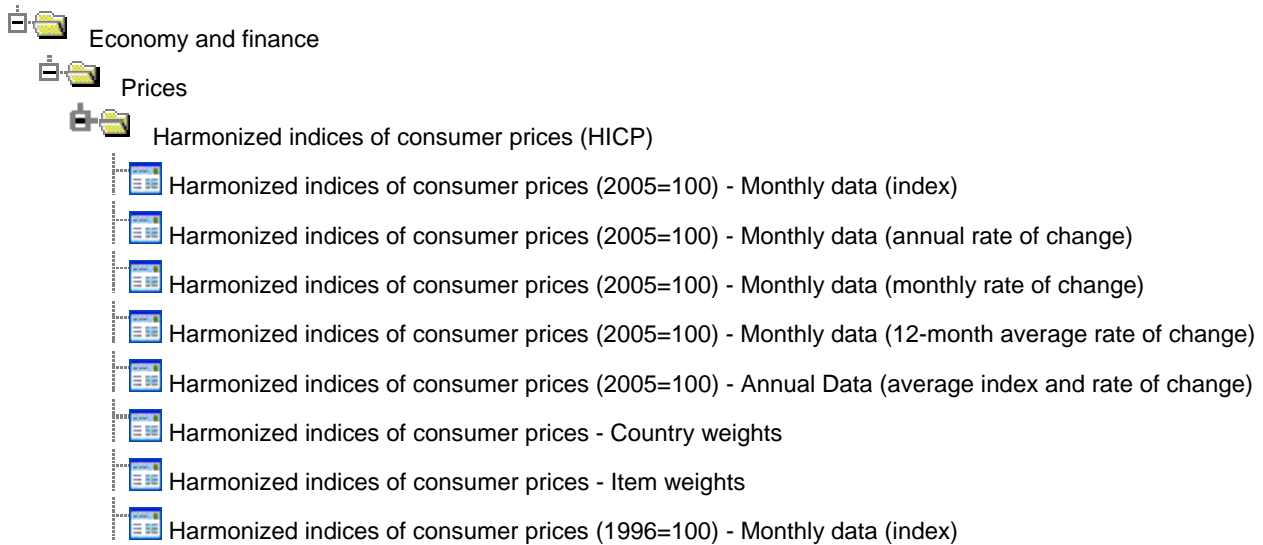
## Further information:

Dedicated HICP section on the Eurostat website:

[http://epp.eurostat.ec.europa.eu/pls/portal/url/page/PGP\\_DS\\_HICP](http://epp.eurostat.ec.europa.eu/pls/portal/url/page/PGP_DS_HICP)

Data:

[Eurostat website / Economy and finance / Data](#)



---

### Journalists can contact the media support service:

Bech Building Office A4/125  
L - 2920 Luxembourg

Tel. (352) 4301 33408

Fax (352) 4301 35349

E-mail: [eurostat-mediasupport@ec.europa.eu](mailto:eurostat-mediasupport@ec.europa.eu)

### European Statistical Data Support:

Eurostat set up with the members of the 'European statistical system' a network of support centres, which will exist in nearly all Member States as well as in some EFTA countries.

Their mission is to provide help and guidance to Internet users of European statistical data.

Contact details for this support network can be found on our Internet site: <http://ec.europa.eu/eurostat/>

---

A list of worldwide sales outlets is available at the:

### Office for Official Publications of the European Communities.

2, rue Mercier  
L - 2985 Luxembourg

URL: <http://publications.europa.eu>

E-mail: [info@publications.europa.eu](mailto:info@publications.europa.eu)

---