

Harmonized Indices of Consumer Prices September 2006

Euro area^{1,2} annual inflation, as measured by the Monetary Union Index of Consumer Prices (MUICP), was 1.7% in September 2006, down from 2.3% in August 2006. A year earlier the rate was 2.6%.

EU annual inflation, as measured by the European Index of Consumer Prices (EICP)³, fell from 2.3% in August to 1.9% in September 2006⁴. A year earlier the rate was 2.5%.

EEA annual inflation, as measured by the European Economic Area Index of Consumer Prices (EEAICP), was 1.9% in September 2006.

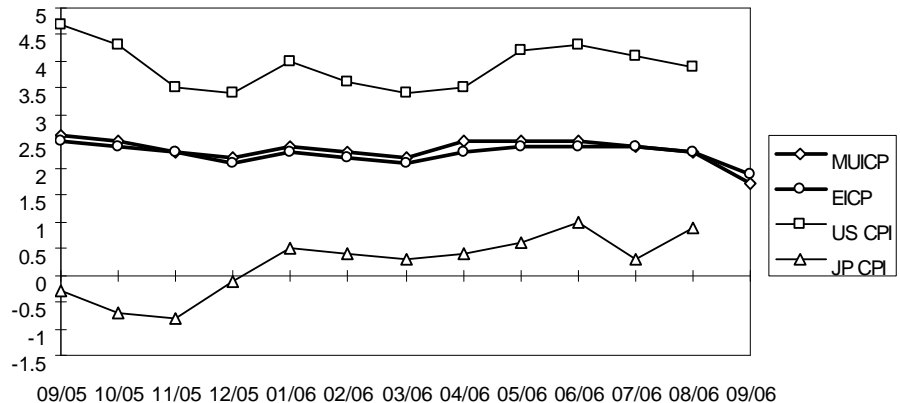
In September 2006, the highest annual inflation rates in EU Member States were recorded in **Latvia** and **Hungary** (both 5.9%) and **Slovakia** (4.5%), and the lowest rates were observed in **Finland** (0.8%), **Germany** (1.0%) and **Sweden** (1.2%).

For the **USA**⁵ and **Japan**⁵ no September data was available in time for publication.

The annual inflation rates for the **euro area**, the **EU** and the latest available rates for the **USA** and **Japan** are shown in the graph below.

Methodological notes can be accessed via the Eurostat website under Special topics/HICP/Methodology – [Short guide for users](#) (issue date: 17/05/2004).

Annual Rate of Change (%)



- 1 The euro area comprises: Belgium, Germany, Greece, Spain, France, Ireland, Italy, Luxembourg, the Netherlands, Austria, Portugal and Finland.
- 2 From January 2006 Portugal has changed the system of price collection for clothing and footwear. For the annual average rate of change, INE simulated the impact of the change on the all-items HICP for Portugal: it is likely to be less than 0.1 percentage points in each of the twelve months following the change. Further information can be found on the website of INE Portugal at: http://www.ine.pt/prodserv/destaque/2006/d061016/en_d061016.pdf
- 3 The EICP (EICP='European Index of Consumer Prices' as defined in Council Regulation (EC) No 2494/95 of 23 October 1995) is the official EU aggregate. It covers 15 Member States until April 2004 and 25 Member States starting from May 2004. The ten new Member States are integrated into the EICP starting from May 2004 using a chain index formula.
- 4 September 2006 data for the UK were not available in time for publication. Eurostat estimates have been used to compute EU and EEA indices.
- 5 For the USA and Japan the national CPIs are given, which are not strictly comparable with the HICPs.

Statistics in focus

ECONOMY AND FINANCE

24/2006

Prices

Author

Christine WIRTZ

Contents

Price Indices.....	2
Rates of Change.....	4
EEA Index Numbers and Rates of Change.....	6
COICOP/HICP Main categories.....	7



Manuscript completed on: 23.10.2006
Data extracted on: 17.10.2006
ISSN 1024-4298

Catalogue number: KS-NJ-06-024-EN-C

© European Communities, 2006

TABLE I
HARMONIZED INDICES OF CONSUMER PRICES
INDEX NUMBERS
2005 = 100

	Euro area	EICP	BE	CZ	DK	DE	EE	EL	ES	FR	IE	IT	CY
Annual Average Index													
2003	95.81	95.95	95.75	96.0	97.5	96.4	93.22	93.79	93.86	95.89	95.7	95.7	96.18
2004	97.86	97.88	97.53	98.4	98.3	98.1	96.05	96.63	96.73	98.14	97.9	97.8	98.00
2005	100.00	100.00	100.00	100.0	100.0	100.0	100.00	100.00	100.00	100.00	100.0	100.0	100.00
Monthly Index - 2004													
Jan	96.45	96.51	95.05	97.7	97.4	97.0	93.65	94.71	94.44	96.79	95.9	96.2	95.55
Feb	96.62	96.69	96.84	97.8	97.8	97.2	93.85	94.05	94.52	97.22	96.8	96.1	95.55
Mar	97.29	97.28	96.92	98.0	98.3	97.7	94.18	96.74	95.22	97.65	97.2	97.1	96.42
Apr	97.72	97.69	97.44	98.0	98.4	97.9	94.77	97.10	96.55	97.91	97.5	97.9	97.13
May	98.05	98.08	97.78	98.6	98.8	98.1	96.62	97.54	97.09	98.26	97.7	98.0	97.99
Jun	98.05	98.09	97.69	98.8	98.5	98.1	96.95	97.32	97.25	98.35	98.2	98.2	98.62
Jul	97.88	97.92	96.67	99.0	98.2	98.5	96.69	95.43	96.55	98.17	97.8	98.0	97.36
Aug	98.05	98.06	98.29	99.0	97.8	98.6	96.62	95.14	97.01	98.35	98.4	97.8	97.84
Sep	98.22	98.23	98.20	98.3	98.6	98.3	96.82	97.18	97.17	98.43	98.5	98.3	98.86
Oct	98.56	98.57	98.71	98.8	99.0	98.5	97.15	97.90	98.18	98.78	98.6	98.6	99.88
Nov	98.48	98.53	98.54	98.6	98.7	98.1	97.54	97.98	98.42	98.78	98.8	98.8	100.28
Dec	98.90	98.92	98.20	98.6	98.4	99.2	97.74	98.49	98.34	98.95	98.9	99.1	100.51
Monthly Index - 2005													
Jan	98.31	98.42	96.92	99.2	98.2	98.6	97.54	98.70	97.40	98.35	97.9	98.1	98.23
Feb	98.65	98.73	99.06	99.2	98.8	99.0	98.14	97.03	97.64	99.04	98.8	98.0	97.84
Mar	99.32	99.32	99.65	99.1	99.6	99.3	98.73	99.50	98.49	99.73	99.0	99.2	98.70
Apr	99.75	99.73	99.82	99.4	100.1	99.3	99.19	100.30	99.90	99.91	99.6	100.0	99.80
May	100.00	100.00	99.99	99.5	100.0	99.7	99.39	100.67	100.05	99.91	99.8	100.3	100.04
Jun	100.08	100.08	100.33	100.1	100.2	99.9	100.05	100.45	100.36	100.08	100.1	100.3	100.12
Jul	100.00	100.02	99.31	100.4	100.0	100.3	100.45	99.14	99.74	99.91	100.0	100.1	98.62
Aug	100.25	100.26	101.10	100.4	100.1	100.5	100.71	98.56	100.21	100.34	100.5	99.9	99.33
Sep	100.76	100.71	101.10	100.3	100.9	100.8	101.57	100.88	100.83	100.77	101.2	100.5	100.98
Oct	101.02	100.95	100.93	101.2	100.9	100.8	101.50	101.54	101.61	100.77	101.2	101.2	102.09
Nov	100.76	100.75	100.85	100.8	100.5	100.3	101.43	101.32	101.77	100.51	101.0	101.2	102.32
Dec	101.10	101.03	100.93	100.5	100.6	101.3	101.30	101.90	102.00	100.69	100.8	101.2	101.93
Monthly Index - 2006													
Jan	100.66	100.64	99.60	101.6	100.2	100.7	102.08	101.67	101.53	100.60	100.3	100.3	100.22
Feb	100.95r	100.93	101.88	101.6	100.9	101.1	102.60	100.07	101.60	100.99	101.5	100.2	100.13
Mar	101.53r	101.41r	101.81	101.5	101.4	101.2	102.71	102.82	102.32	101.44	101.8	101.4	101.31
Apr	102.20r	102.07r	102.38	101.7	101.9	101.6	103.44	103.84	103.80	101.89	102.3	102.3	102.34
May	102.48r	102.42r	102.74	102.3	102.1	101.8	104.00	103.96	104.17	102.32	102.8	102.6	102.54
Jun	102.56r	102.53r	102.82	102.4	102.3	101.9	104.48	103.90	104.33	102.32	103.0	102.7	102.75
Jul	102.43r	102.43r	101.72	102.8	102.0	102.4	104.94	103.02	103.76	102.13	102.9	102.4	101.42
Aug	102.52r	102.60r	103.47r	103.0	102.0	102.3	105.70	101.96	103.99	102.46	103.7	102.2	102.04
Sep	102.52p	102.60p	102.98	102.5	102.4	101.8	105.45	104.05	103.79	102.26	103.4	102.9	103.25
Oct													
Nov													
Dec													

p provisional r revised

TABLE I
HARMONIZED INDICES OF CONSUMER PRICES
2005 = 100
INDEX NUMBERS

LV	LT	LU	HU	MT	NL	AT	PL	PT	SI	SK	FI	SE	UK	
Annual Average Index														
88.10	96.29	93.36	90.50	94.95	97.18	96.06	94.5	95.52	94.16	90.52	99.10	98.18	96.7	2003
93.55	97.41	96.37	96.63	97.53	98.52	97.94	97.9	97.92	97.60	97.28	99.24	99.18	98.0	2004
100.00	100.00	100.00	100.00	100.00	100.00	100.00	100.0	100.00	100.00	100.00	100.00	100.00	100.0	2005
Monthly Index - 2004														
90.36	95.77	94.02	94.41	94.26	97.33	96.80	95.8	96.40	95.58	96.09	99.01	98.36	97.0	Jan
90.92	95.61	95.24	95.47	94.33	97.89	97.23	95.9	96.24	95.75	96.73	99.45	98.18	97.2	Feb
91.82	96.09	95.32	95.97	94.72	98.69	97.58	96.2	96.48	96.32	96.95	99.01	99.06	97.4	Mar
92.37	96.41	95.81	96.25	98.70	99.01	97.49	96.9	97.42	96.94	96.95	99.01	99.32	97.8	Apr
93.55	97.93	96.29	97.12	98.86	99.18	97.84	98.0	98.20	97.79	97.27	99.19	99.67	98.1	May
94.10	98.01	96.70	97.17	99.17	98.45	98.02	98.6	99.37	98.24	97.48	99.10	99.15	98.1	Jun
94.31	97.93	95.89	97.17	99.64	98.13	97.75	98.5	98.51	98.75	97.65	98.84	98.97	97.8	Jul
94.24	97.61	96.94	96.85	99.17	98.29	98.10	98.2	98.12	98.47	97.54	99.10	98.88	98.1	Aug
94.66	98.17	97.10	96.94	99.64	99.10	98.02	98.5	98.04	98.07	97.65	99.53	99.67	98.2	Sep
95.00	98.33	97.59	97.40	99.64	99.26	98.54	99.1	98.51	98.18	97.81	99.88	100.11	98.4	Oct
95.49	98.57	97.92	97.45	95.66	98.85	98.71	99.4	98.82	98.75	97.70	99.36	99.41	98.6	Nov
95.77	98.49	97.67	97.40	96.60	98.05	99.15	99.4	98.90	98.30	97.54	99.36	99.41	99.1	Dec
Monthly Index - 2005														
96.39	98.49	96.70	98.14	96.05	98.53	99.15	99.4	98.35	97.79	99.20	98.84	98.88	98.6	Jan
97.29	98.65	98.32	98.69	96.67	99.34	99.50	99.4	98.27	98.47	99.31	99.45	99.32	98.8	Feb
97.85	99.21	98.65	99.15	97.14	100.14	99.93	99.5	98.67	99.48	99.31	99.88	99.58	99.3	Mar
98.89	99.53	99.38	99.88	100.65	100.30	99.76	99.9	99.37	99.54	99.53	100.15	99.76	99.7	Apr
99.65	99.77	99.86	100.48	101.27	100.22	99.76	100.1	99.92	99.88	99.63	99.80	99.85	100.0	May
100.27	99.93	99.78	100.76	101.27	99.90	100.02	100.0	99.99	99.93	100.01	100.06	99.93	100.0	Jun
100.27	99.77	99.70	100.67	101.35	99.58	99.76	100.0	100.38	100.72	99.69	99.71	99.67	100.1	Jul
100.13	99.85	101.08	100.21	101.66	99.90	99.93	100.0	100.54	100.22	99.63	100.06	99.93	100.4	Aug
101.66	100.65	101.65	100.39	101.66	100.78	100.55	100.4	100.70	101.18	99.90	100.67	100.72	100.6	Sep
102.35	101.30	102.46	100.44	102.60	100.78	100.55	100.7	101.09	101.35	101.24	100.67	100.98	100.7	Oct
102.70	101.38	101.41	100.62	99.79	100.46	100.37	100.5	101.32	100.78	101.24	100.32	100.63	100.7	Nov
102.56	101.46	101.00	100.58	99.87	100.06	100.72	100.2	101.40	100.67	101.30	100.41	100.72	101.0	Dec
Monthly Index - 2006														
103.67	101.98	100.63	100.55	98.31	100.28	100.66	100.3	101.01r	100.32	103.23	100.00	100.01	100.5	Jan
104.09	102.03	102.13	100.92	98.93	100.78	100.99	100.3	101.21r	100.70	103.56	100.77	100.37	100.9	Feb
104.29	102.24	102.31	101.51	100.00	101.58	101.26	100.4	102.42r	101.43	103.57	101.04	101.03	101.1	Mar
104.96	102.94	102.81	102.27	104.16	102.06	101.84	101.1	103.01r	102.34	103.90	101.61	101.58	101.7	Apr
106.69	103.39	103.43	103.37	104.83	102.02	101.86	101.6	103.57r	103.27	104.41	101.52	101.78	102.2	May
106.58	103.66	103.70	103.66	104.57	101.68	101.88	101.5	103.52r	102.96	104.55	101.54	101.78	102.5	Jun
107.22	104.18	103.08	103.85	104.96	101.32	101.72	101.4	103.38r	102.66	104.68	101.07	101.44	102.5	Jul
106.96	104.12	104.23	104.91	104.66	101.81	102.03	101.7	103.29r	103.35	104.57	101.37	101.48	102.9	Aug
107.67	103.98	103.65	106.33	104.86	102.30p	101.89p	101.8	103.71	103.68	104.36	101.47	101.97	:	Sep
														Oct
														Nov
														Dec

p provisional r revised : not available

TABLE II
HARMONIZED INDICES OF CONSUMER PRICES
 RATES OF CHANGE (%)

	Euro area	EICP	BE	CZ	DK	DE	EE	EL	ES	FR	IE	IT	CY
Annual Average Rate of Change													
2003/12	2.1	2.0	1.5	-0.1	2.0	1.0	1.4	3.4	3.1	2.2	4.0	2.8	4.0
2004/12	2.1	2.0	1.9	2.6	0.9	1.8	3.0	3.0	3.1	2.3	2.3	2.3	1.9
2005/12	2.2	2.2	2.5	1.6	1.7	1.9	4.1	3.5	3.4	1.9	2.2	2.2	2.0
2006/9	2.3p	2.3p	2.5	2.4	1.9	2.0	4.3	3.4	3.8	2.0	2.6	2.3	2.3
Annual Rate of Change - 2004													
Jan	1.9	1.8	1.4	2.0	0.9	1.1	0.6	3.1	2.3	2.2	2.2	2.1	1.6
Feb	1.6	1.5	1.2	2.0	0.6	0.8	0.6	2.6	2.2	1.9	2.2	2.5	1.4
Mar	1.7	1.5	1.0	2.2	0.4	1.1	0.7	2.9	2.2	1.9	1.9	2.3	0.1
Apr	2.0	1.8	1.7	2.0	0.5	1.7	1.5	3.1	2.7	2.4	1.7	2.3	0.1
May	2.5	2.3	2.4	2.6	1.1	2.1	3.7	3.1	3.4	2.8	2.1	2.3	1.2
Jun	2.4	2.3	2.0	2.7	0.8	2.0	4.4	3.0	3.5	2.7	2.5	2.4	2.4
Jul	2.3	2.2	2.1	3.0	1.1	2.1	4.0	3.1	3.3	2.6	2.5	2.3	2.9
Aug	2.3	2.1	2.0	3.1	0.8	2.1	3.9	2.8	3.3	2.5	2.5	2.4	2.8
Sep	2.1	2.0	1.8	2.8	0.9	2.0	3.8	2.9	3.2	2.2	2.4	2.2	1.8
Oct	2.4	2.2	2.7	3.1	1.5	2.3	4.0	3.3	3.6	2.3	2.5	2.1	2.0
Nov	2.2	2.1	2.3	2.6	1.0	2.0	4.4	3.2	3.5	2.2	2.7	2.1	2.6
Dec	2.4	2.2	1.9	2.5	0.9	2.3	4.8	3.1	3.3	2.3	2.4	2.4	3.9
Annual Rate of Change - 2005													
Jan	1.9	2.0	2.0	1.5	0.8	1.6	4.2	4.2	3.1	1.6	2.1	2.0	2.8
Feb	2.1	2.1	2.3	1.4	1.0	1.9	4.6	3.2	3.3	1.9	2.1	2.0	2.4
Mar	2.1	2.1	2.8	1.1	1.3	1.6	4.8	2.9	3.4	2.1	1.9	2.2	2.4
Apr	2.1	2.1	2.4	1.4	1.7	1.4	4.7	3.3	3.5	2.0	2.2	2.1	2.7
May	2.0	2.0	2.3	0.9	1.2	1.6	2.9	3.2	3.0	1.7	2.1	2.3	2.1
Jun	2.1	2.0	2.7	1.3	1.7	1.8	3.2	3.2	3.2	1.8	1.9	2.1	1.5
Jul	2.2	2.1	2.7	1.4	1.8	1.8	3.9	3.9	3.3	1.8	2.2	2.1	1.3
Aug	2.2	2.2	2.9	1.4	2.4	1.9	4.2	3.6	3.3	2.0	2.1	2.1	1.5
Sep	2.6	2.5	3.0	2.0	2.3	2.5	4.9	3.8	3.8	2.4	2.7	2.2	2.1
Oct	2.5	2.4	2.2	2.4	1.9	2.3	4.5	3.7	3.5	2.0	2.6	2.6	2.2
Nov	2.3	2.3	2.3	2.2	1.8	2.2	4.0	3.4	3.4	1.8	2.2	2.4	2.0
Dec	2.2	2.1	2.8	1.9	2.2	2.1	3.6	3.5	3.7	1.8	1.9	2.1	1.4
Annual Rate of Change - 2006													
Jan	2.4	2.3	2.8	2.4	2.0	2.1	4.7	3.0	4.2	2.3	2.5	2.2	2.0
Feb	2.3	2.2	2.8	2.4	2.1	2.1	4.5	3.1	4.1	2.0	2.7	2.2	2.3
Mar	2.2	2.1	2.2	2.4	1.8	1.9	4.0	3.3	3.9	1.7	2.8	2.2	2.6
Apr	2.5r	2.3	2.6	2.3	1.8	2.3	4.3	3.5	3.9	2.0	2.7	2.3	2.5
May	2.5	2.4	2.8	2.8	2.1	2.1	4.6	3.3	4.1	2.4	3.0	2.3	2.5
Jun	2.5	2.4	2.5	2.3	2.1	2.0	4.4	3.4	4.0	2.2	2.9	2.4	2.6
Jul	2.4	2.4	2.4	2.4	2.0	2.1	4.5	3.9	4.0	2.2	2.9	2.3	2.8
Aug	2.3	2.3	2.3r	2.6	1.9	1.8	5.0	3.4	3.8	2.1	3.2	2.3	2.7
Sep	1.7p	1.9p	1.9	2.2	1.5	1.0	3.8	3.1	2.9	1.5	2.2	2.4	2.2
Oct													
Nov													
Dec													

p provisional r revised

TABLE II
HARMONIZED INDICES OF CONSUMER PRICES
RATES OF CHANGE (%)

LV	LT	LU	HU	MT	NL	AT	PL	PT	SI	SK	FI	SE	UK	
Annual Average Rate of Change														
2.9	-1.1	2.5	4.7	1.9	2.2	1.3	0.7	3.3	5.7	8.4	1.3	2.3	1.4	2003/12
6.2	1.2	3.2	6.8	2.7	1.4	2.0	3.6	2.5	3.7	7.5	0.1	1.0	1.3	2004/12
6.9	2.7	3.8	3.5	2.5	1.5	2.1	2.2	2.1	2.5	2.8	0.8	0.8	2.1	2005/12
6.9	3.5	3.6	3.2	3.2	1.7p	1.8p	1.2	3.1	2.6	4.3	1.2	1.4	:	2006/9
Annual Rate of Change - 2004														
4.0	-1.2	2.3	6.7	2.8	1.5	1.2	1.8	2.2	4.0	8.3	0.8	1.3	1.4	Jan
4.3	-1.2	2.5	7.0	2.5	1.3	1.5	1.8	2.1	3.6	8.4	0.4	0.1	1.3	Feb
4.7	-0.9	2.0	6.6	2.1	1.2	1.5	1.8	2.2	3.5	8.0	-0.4	0.4	1.1	Mar
5.0	-0.7	2.7	7.0	3.6	1.5	1.5	2.3	2.4	3.6	7.9	-0.4	1.0	1.1	Apr
6.1	1.1	3.4	7.8	3.1	1.7	2.1	3.5	2.5	3.9	8.2	-0.1	1.5	1.5	May
6.1	1.1	3.8	7.5	3.2	1.5	2.3	4.2	3.7	3.9	8.2	-0.1	1.2	1.6	Jun
6.7	1.7	3.8	7.2	3.1	1.2	2.1	4.7	2.9	3.7	8.4	0.2	1.2	1.4	Jul
7.8	2.2	3.6	7.2	2.5	1.2	2.2	4.8	2.4	3.7	7.1	0.3	1.1	1.3	Aug
7.7	3.1	3.1	6.7	3.2	1.2	1.8	4.6	2.1	3.4	6.6	0.2	1.1	1.1	Sep
7.2	3.1	4.1	6.4	2.7	1.5	2.4	4.6	2.4	3.4	6.6	0.6	1.5	1.2	Oct
7.2	2.9	4.0	5.8	1.9	1.5	2.3	4.5	2.6	3.8	6.3	0.2	1.1	1.5	Nov
7.4	2.8	3.5	5.5	1.9	1.2	2.5	4.4	2.6	3.3	5.8	0.1	0.9	1.7	Dec
Annual Rate of Change - 2005														
6.7	2.8	2.9	4.0	1.9	1.2	2.4	3.8	2.0	2.3	3.2	-0.2	0.5	1.6	Jan
7.0	3.2	3.2	3.4	2.5	1.5	2.3	3.6	2.1	2.8	2.7	0.0	1.2	1.7	Feb
6.6	3.2	3.5	3.3	2.6	1.5	2.4	3.4	2.3	3.3	2.4	0.9	0.5	1.9	Mar
7.1	3.2	3.7	3.8	2.0	1.3	2.3	3.1	2.0	2.7	2.7	1.2	0.4	1.9	Apr
6.5	1.9	3.7	3.5	2.4	1.0	2.0	2.1	1.8	2.1	2.4	0.6	0.2	1.9	May
6.6	2.0	3.2	3.7	2.1	1.5	2.0	1.4	0.6	1.7	2.6	1.0	0.8	2.0	Jun
6.3	1.9	4.0	3.6	1.7	1.5	2.1	1.5	1.9	2.0	2.1	0.9	0.7	2.3	Jul
6.3	2.3	4.3	3.5	2.5	1.6	1.9	1.8	2.5	1.8	2.1	1.0	1.1	2.4	Aug
7.4	2.5	4.7	3.6	2.0	1.7	2.6	1.9	2.7	3.2	2.3	1.1	1.1	2.5	Sep
7.7	3.0	5.0	3.1	3.0	1.5	2.0	1.6	2.6	3.2	3.5	0.8	0.9	2.3	Oct
7.6	2.9	3.6	3.3	4.3	1.6	1.7	1.1	2.5	2.1	3.6	1.0	1.2	2.1	Nov
7.1	3.0	3.4	3.3	3.4	2.0	1.6	0.8	2.5	2.4	3.9	1.1	1.3	1.9	Dec
Annual Rate of Change - 2006														
7.6	3.5	4.1	2.5	2.4	1.8	1.5	0.9	2.7r	2.6	4.1	1.2	1.1	1.9	Jan
7.0	3.4	3.9	2.3	2.3	1.4	1.5	0.9	3.0r	2.3	4.3	1.3	1.1	2.0	Feb
6.6	3.1	3.7	2.4	2.9	1.4	1.3	0.9	3.8r	2.0	4.3	1.2	1.5	1.8	Mar
6.1	3.4	3.5	2.4	3.5	1.8	2.1	1.2	3.7r	2.8	4.4	1.5	1.8	2.0	Apr
7.1	3.6	3.6	2.9	3.5	1.8	2.1	1.5	3.7r	3.4	4.8	1.7	1.9	2.2	May
6.3	3.7	3.9	2.9	3.3	1.8	1.9	1.5	3.5r	3.0	4.5	1.5	1.9	2.5	Jun
6.9	4.4	3.4	3.2	3.6	1.7	2.0	1.4	3.0r	1.9	5.0	1.4	1.8	2.4	Jul
6.8	4.3	3.1	4.7	3.0	1.9	2.1	1.7	2.7r	3.1	5.0	1.3	1.6	2.5	Aug
5.9	3.3	2.0	5.9	3.1	1.5p	1.3p	1.4	3.0	2.5	4.5	0.8	1.2	:	Sep
														Oct
														Nov
														Dec

p provisional r revised : not available

TABLE III
HARMONIZED INDICES OF CONSUMER
PRICES
INDEX NUMBERS 2005 = 100

	EEA	IS	NO	CH**
Annual Average Index				
2003	95.97	96.41	97.9	98.0
2004	97.89	98.64	98.5	98.8
2005	100.00	100.00	100.0	100.0
Monthly Index - 2004				
Jan	96.52	97.17	97.7	97.9
Feb	96.71	96.79	97.9	97.9
Mar	97.29	97.56	98.4	98.1
Apr	97.69	97.94	98.6	99.0
May	98.08	98.63	98.7	99.2
Jun	98.10	99.17	98.7	99.4
Jul	97.92	98.86	98.6	98.3
Aug	98.06	98.79	98.3	98.7
Sep	98.23	99.17	98.7	98.7
Oct	98.57	99.71	99.0	99.6
Nov	98.54	99.79	99.0	99.7
Dec	98.92	100.10	98.8	99.6
Monthly Index - 2005				
Jan	98.42	99.71	98.7	99.1
Feb	98.73	99.56	98.7	99.3
Mar	99.32	99.94	99.2	99.6
Apr	99.73	99.48	99.7	100.4
May	100.00	99.17	100.1	100.3
Jun	100.08	99.56	100.3	100.0
Jul	100.02	99.40	99.9	99.5
Aug	100.26	99.17	100.1	99.6
Sep	100.71	100.79	100.8	100.1
Oct	100.95	101.25	100.8	100.9
Nov	100.75	100.87	100.8	100.7
Dec	101.03	101.10	100.8	100.6
Monthly Index - 2006				
Jan	100.64r	101.01	100.5	100.4
Feb	100.93	100.78	101.4	100.7
Mar	101.42r	101.93	101.6	100.6
Apr	102.08r	102.72	102.5	101.4
May	102.43r	103.92	102.6	101.6
Jun	102.53r	105.27	102.4	101.6
Jul	102.43r	105.71	102.2	100.9
Aug	102.60r	106.17	102.2	101.1
Sep	102.62p	106.95	103.8	100.9
Oct				
Nov				
Dec				

TABLE IV
HARMONIZED INDICES OF CONSUMER
PRICES
RATES OF CHANGE (%)

	EEA	IS	NO	CH**	
Annual Average Rate of Change					
2003/12	2.0	1.4	2.0	0.6	
2004/12	2.0	2.3	0.6	0.8	
2005/12	2.2	1.4	1.5	1.2	
2006/9	2.3p	3.5	2.3	1.2	
Annual Rate of Change - 2004					
Jan	1.7	1.5	-1.5	0.2	Jan
Feb	1.5	1.4	-1.5	0.1	Feb
Mar	1.5	1.0	-0.4	-0.1	Mar
Apr	1.8	1.5	0.5	0.6	Apr
May	2.3	2.3	1.1	0.9	May
Jun	2.3	2.8	1.3	1.1	Jun
Jul	2.2	2.7	1.6	0.8	Jul
Aug	2.1	3.1	1.1	1.0	Aug
Sep	2.0	2.7	1.1	0.8	Sep
Oct	2.2	2.9	1.4	1.3	Oct
Nov	2.1	2.9	1.4	1.5	Nov
Dec	2.2	2.9	1.2	1.4	Dec
Annual Rate of Change - 2005					
Jan	2.0	2.6	1.0	1.2	Jan
Feb	2.1	2.9	0.8	1.4	Feb
Mar	2.1	2.4	0.8	1.5	Mar
Apr	2.1	1.6	1.1	1.4	Apr
May	2.0	0.5	1.4	1.1	May
Jun	2.0	0.4	1.6	0.6	Jun
Jul	2.1	0.5	1.3	1.2	Jul
Aug	2.2	0.4	1.8	0.9	Aug
Sep	2.5	1.6	2.1	1.4	Sep
Oct	2.4	1.5	1.8	1.3	Oct
Nov	2.2	1.1	1.8	1.0	Nov
Dec	2.1	1.0	2.0	1.0	Dec
Annual Rate of Change - 2006					
Jan	2.3r	1.3	1.8	1.3	Jan
Feb	2.2	1.2	2.7	1.4	Feb
Mar	2.1	2.0	2.4	1.0	Mar
Apr	2.4r	3.3	2.8	1.1	Apr
May	2.4	4.8	2.5	1.4	May
Jun	2.4	5.7	2.1	1.6	Jun
Jul	2.4	6.3	2.3	1.4	Jul
Aug	2.3	7.1	2.1	1.5	Aug
Sep	1.9p	6.1	3.0	0.8	Sep
Oct					Oct
Nov					Nov
Dec					Dec

p provisional r revised ** national CPI

TABLE V

MAIN CATEGORIES OF HARMONIZED INDICES OF CONSUMER PRICES

September 2006 / September 2005

ANNUAL RATES OF CHANGE (%)

	00.	01.	02.	03.	04.	05.	06.	07.	08.	09.	10.	11.	12.
Euro area	1.7p	3.3p	1.6p	0.9p	4.0p	0.9p	1.6p	0.2p	-3.2p	0.1p	3.5p	2.6p	2.3p
EICP	1.9p	3.4p	2.1p	-0.3p	5.1p	0.5p	1.8p	0.1p	-2.6p	-0.2p	4.1p	2.8p	2.8p
BE	1.9	4.8	1.8	0.2	2.3	1.2	2.4	-1.2	-2.3	1.2	1.6	3.5	2.8
CZ	2.2	1.7	1.5	-6.3	9.3	-1.3	5.4	-2.5	1.3	1.8	2.7	4.3	2.3
DK	1.5	3.6	1.3	-1.7	3.1	0.9	0.2	-0.6	-1.6	2.0	4.3	2.8	1.1
DE	1.0	3.0	0.4	-0.4	3.0	-0.2	1.0	-0.9	-2.8	0.1	3.4	1.4	1.0
EE	3.8	7.2	4.4	2.0	11.1	2.4	3.2	-3.7	-5.6	5.5	5.5	3.4	4.0
EL	3.1	4.1	6.8	3.0	8.6	2.0	2.3	-0.7	0.2	1.0	3.9	2.5	3.2
ES	2.9	4.7	1.0	1.2	5.8	2.6	1.4	0.2	-1.1	0.3	4.0	4.5	4.2
FR	1.5	2.7	0.4	0.0	3.8	0.6	3.9	0.7	-6.2	-1.5	3.4	2.3	2.9
IE	2.2	1.8	0.2	-1.9	5.7	-1.1	4.2	-0.1	-0.2	2.7	4.7	4.2	2.9
IT	2.4	2.6	5.0	2.3	5.6	1.8	-0.4	2.0	-3.1	1.4	2.2	2.2	2.8
CY	2.2	6.0	1.9	-1.6	4.2	-0.2	3.5	2.2	-2.3	0.9	5.6	0.6	4.0
LV	5.9	8.1	9.1	0.5	15.6	2.3	6.0	-0.4	-8.2	1.7	11.2	10.6	6.0
LT	3.3	7.2	0.3	-4.4	7.1	0.7	6.2	-0.8	-0.2	1.2	-0.2	3.9	5.8
LU	2.0	2.6	3.2	0.1	5.3	1.7	3.3	0.1	-2.6	1.5	1.7	2.8	2.9
HU	5.9	12.3	5.8	0.3	12.5	-0.7	3.7	1.8	-4.0	2.7	8.4	7.6	3.4
MT	3.1	3.4	0.5	-2.3	12.6	1.3	4.0	6.4	0.5	-0.8	2.7	2.3	2.5
NL	1.5p	3.7p	1.5p	0.9p	4.9p	-0.1p	3.9p	-1.5p	-3.0p	0.8p	1.2p	2.0p	0.4p
AT	1.3p	2.9p	0.7p	-2.1p	5.0p	0.6p	0.9p	0.7p	-2.2p	-2.3p	8.0p	1.6p	2.4p
PL	1.4	1.7	1.5	-7.0	4.8	0.1	1.0	-0.5	0.3	-2.1	1.4	2.0	4.8
PT	3.0	3.1	8.9	9.0	3.7	0.9	1.4	2.7	-1.0	0.1	5.9	1.7	3.9
SI	2.5	3.8	3.7	0.1	4.0	4.3	-0.9	-0.1	1.5	1.0	0.7	4.7	4.2
SK	4.5	2.8	5.3	-0.1	13.0	-0.2	10.9	-2.0	-2.5	2.1	4.0	3.1	3.8
FI	0.8	2.5	1.2	-1.8	1.9	1.1	-0.2	-1.0	0.2	-0.4	1.6	1.8	2.6
SE	1.2	2.3	0.8	0.6	5.2	-2.4	1.1	-2.0	-6.0	0.2	3.6	2.1	4.0
UK	:	:	:	:	:	:	:	:	:	:	:	:	:
EEA	1.9p	3.4p	2.1p	-0.3p	5.2p	0.5p	1.8p	0.2p	-2.5p	-0.2p	4.1p	2.8p	2.8p
IS	6.1	12.4	3.7	2.3	6.5	4.1	4.3	6.6	4.0	2.8	7.0	8.5	4.1
NO	3.0	2.0	2.3	-5.7	13.6	-1.8	2.5	1.8	2.0	0.9	2.4	4.5	-0.9

p provisional : not available

COICOP/HICP Code

- | | | | |
|------------|---|------------|----------------------------------|
| 00. | HICP (all-items index) | 06. | Health |
| 01. | Food and non-alcoholic beverages | 07. | Transports |
| 02. | Alcoholic beverages and tobacco | 08. | Communications |
| 03. | Clothing and footwear | 09. | Recreation and culture |
| 04. | Housing, water, electricity, gas and other fuels | 10. | Education |
| 05. | Furnishings, household equipment and routine maintenance of the house | 11. | Restaurants and hotels |
| | | 12. | Miscellaneous goods and services |

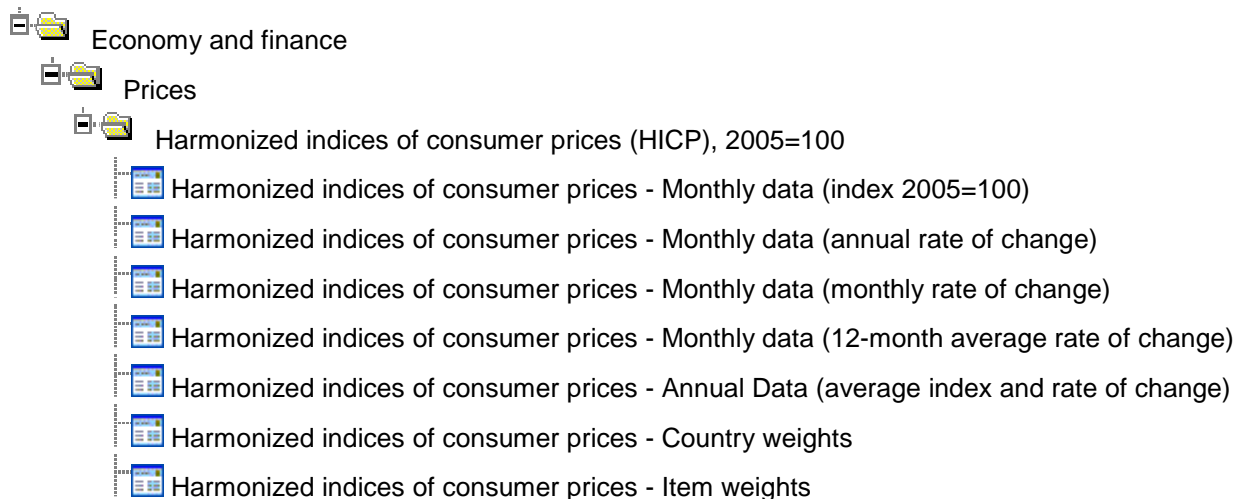
Further information:

Dedicated HICP section on the Eurostat website:

http://epp.eurostat.ec.europa.eu/pls/portal/url/page/PGP_DS_HICP

Data:

Eurostat website / Economy and finance / Data



Journalists can contact the media support service:

Bech Building Office A4/125
L - 2920 Luxembourg

Tel. (352) 4301 33408
Fax (352) 4301 35349

E-mail: eurostat-mediasupport@ec.europa.eu

European Statistical Data Support:

Eurostat set up with the members of the 'European statistical system' a network of support centres, which will exist in nearly all Member States as well as in some EFTA countries.

Their mission is to provide help and guidance to Internet users of European statistical data.

Contact details for this support network can be found on our Internet site: <http://ec.europa.eu/eurostat/>

A list of worldwide sales outlets is available at the:

Office for Official Publications of the European Communities.

2, rue Mercier
L - 2985 Luxembourg

URL: <http://publications.europa.eu>
E-mail: info-info-opoce@ec.europa.eu
