

# Quarterly national accounts – ESA

1/2 □ 1989 Quarterly

*First quarter of 1989: GDP (+1.2%) - the Community's economy continues to expand*

*The first quarter of 1989 saw the highest increase in the rate of growth of the Community's GDP (+1.2%) since the third quarter of 1987. On the demand side, growth in private consumption (+0.5%) and in particular public consumption (+0.1% only) continued to ease off; on the other hand, the increase in investment (+4.4%) was the highest for four years.*

*The trade balance improved slightly in all member states except Italy, where exports fell (-1.2%) and imports rose (+2.9%). This might be partly explained both by the increase in the value of the lira and by certain fiscal manoeuvres which made Italian products less competitive. There was a considerable improvement in the trade balances of the Federal Republic of Germany (exports +5.0%, imports -1.6%) and of France (exports +6.5%, imports +1.5%), although for the United Kingdom was less striking (exports +3.7%, imports +3.2%). This was, however, the first increase in UK imports for some time, since the previous two quarters had shown decreases. On the supply side, GDP rose substantially in the Federal Republic of Germany (+2.9%) and more modestly in France (+1.1%) and Italy (+0.7%), whereas in the United Kingdom it fell slightly (-0.4%). As regards the components of domestic demand, the trend is similar for all member states: all slight increase in both private and public consumption and a considerable increase in investment, particularly in the Federal Republic of Germany, where the increase of +11.1% far outstripped the rates recorded in recent years.*

*For the United States and Japan, the various aggregates present a similar picture to that of the Community economy as a whole. In the United States, both private and public consumption increased at a much slower rate, there was a healthy growth in investment, and in particular there was a considerable improvement in the trade balance (exports +3.6%, imports -0.1%) despite a stronger dollar. Japan's GDP showed a firm upward trend (+2.2%), as did domestic demand (investment +3.9%, private consumption +1.9%), whereas there was a slight worsening of the trade balance (exports +7.6%, imports +8.6%).*

*The good results obtained in the first quarter of 1989 seem to suggest that the present phase of expansion will continue, the only uncertainty being inflationary pressures, particularly in Germany (+1.0%) and the United Kingdom (+1.9%); these pressures, and the resulting anti-inflationary policies adopted in all member states, might slow down the rate of economic growth.*

OFICINA ESTADÍSTICA DE LAS COMUNIDADES EUROPEAS  
DE EUROPÆISKE FÆLLESSKABERS STATISTISKE KONTOR  
STATISTISCHES AMT DER EUROPÄISCHEN GEMEINSCHAFTEN  
ΣΤΑΤΙΣΤΙΚΗ ΥΠΗΡΕΣΙΑ ΤΩΝ ΕΥΡΩΠΑΪΚΩΝ ΚΟΙΝΟΤΗΤΩΝ  
STATISTICAL OFFICE OF THE EUROPEAN COMMUNITIES  
OFFICE STATISTIQUE DES COMMUNAUTÉS EUROPÉENNES  
ISTITUTO STATISTICO DELLE COMUNITÀ EUROPEE  
BUREAU VOOR DE STATISTIEK DER EUROPESE GEMEENSCHAPPEN  
SERVIÇO DE ESTATÍSTICA DAS COMUNIDADES EUROPEIAS

L-2920 Luxembourg – Tél. 43011 – Télex : Comeur Lu 3423  
B-1049 Bruxelles, bâtiment Berlaymont, rue de la Loi 200 (bureau de liaison) – Tél. 235 11 11

## EXPLANATORY NOTES

This publication shows quarterly and, for comparison, annual growth rates for the main aggregates of national accounts, in volume and price terms, for some Member States (Federal Republic of Germany, France, Italy, United Kingdom) and major trading partners of the Community (United States and Japan).

To facilitate analysis of short-term trends, movements in the aggregates showed in the tables of this bulletin are expressed in growth rates compared with the previous period.

### Source of data

*The annual data* are extracted from the aggregates figures obtained by Eurostat from the National Statistical Offices of the Member States, the United States and Japan by means of a harmonized questionnaire (ESA) in November of each year. The data marked with an asterisk (\*) are forecasts published by the Commission (DG II) three times a year, in February, May and October.

*The quarterly data* are taken from purely national sources, and follow the general concepts, definitions and methods of seasonal adjustment used in their country of origin. Users should be aware that, owing to this lack of harmonization, the aggregates for the various countries given in this publication may not be totally comparable.

Eurostat is currently using only the expenditure measure of GDP. It should however be noted that some countries, such as the United Kingdom, estimate and publish GDPs based on more than one measure.

### Community total

The Community total for each aggregate is derived by totaling the data for the available countries converted into a common unit using purchasing power standards (PPS). For the quarterly aggregates, the Community total is the sum of the seasonally adjusted values of the four largest Member States (D, F, I, UK). These four countries accounting for only approximately 80 % of the GDP of the Community of Twelve, when referring to the Community it is not appropriate to use the definition of EUR 12 but to call it simply EUR. (It must however be said that the annual data which are in the tables, are EUR 12 data).

### Publications and storage of the data

The annual data are published each year in the volume '**National Accounts ESA - Aggregates**'. They are also available, via servers, from Eurostat's **Cronos** data base, SEF:SEC1. The quarterly data are also stored in **Cronos** SEF:ICG.

For all information on annual and quarterly aggregates, contact Eurostat in Luxembourg, tel. 4301-4351.

For all information on access to the Cronos data base, contact Eurostat in Luxembourg, tel. 4301-4567.

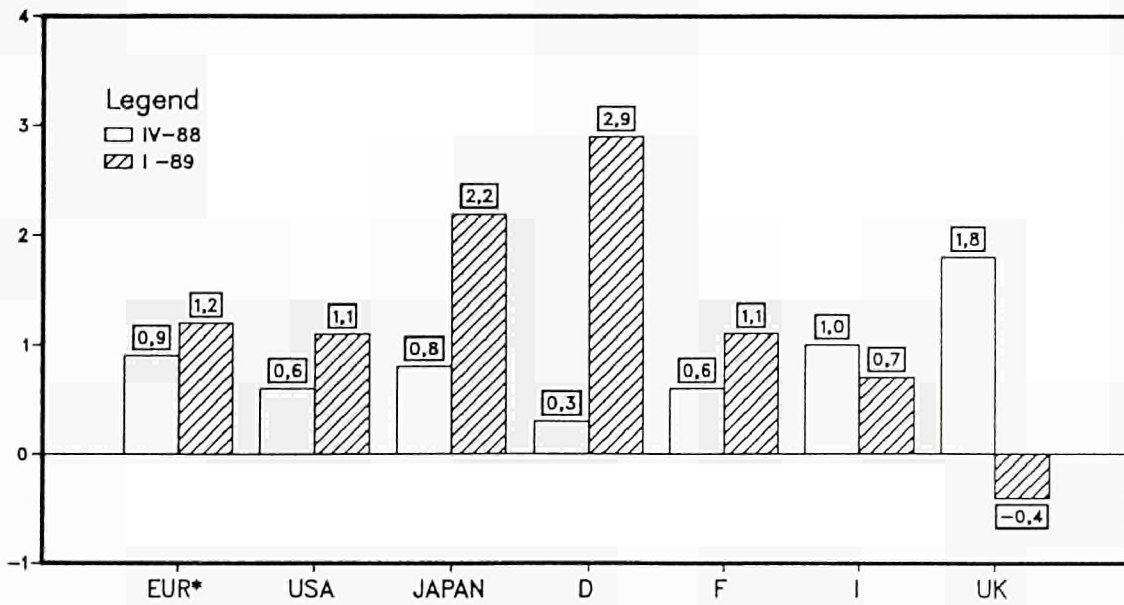
Requests for a subscription to this bulletin should be sent to the **Office for Official Publications of the European Communities, L-2985 Luxembourg**.

*Symbols and abbreviations: see last page.*

B I P  
V O L U M E N

G D P  
V O L U M E

P I B  
V O L U M E

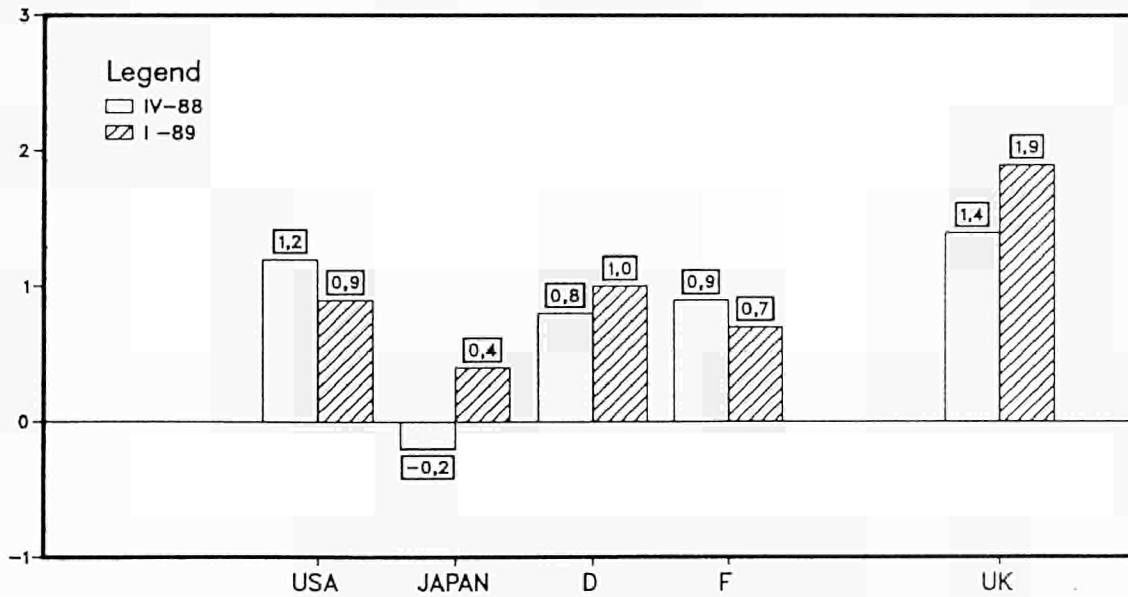


% veraenderung zum letzten quartal, sais. ber.  
 % change compared with previous quarter, seas. adj.  
 % par rapport au trimestre précédent, cvs

P R E I S E

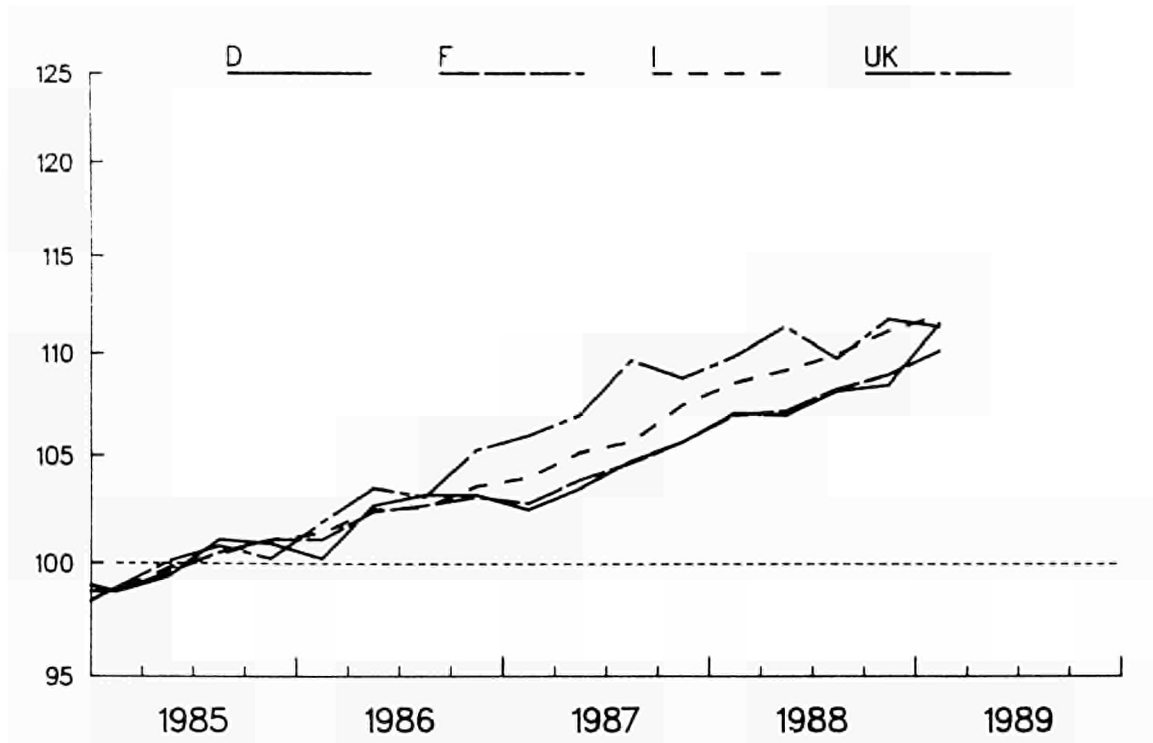
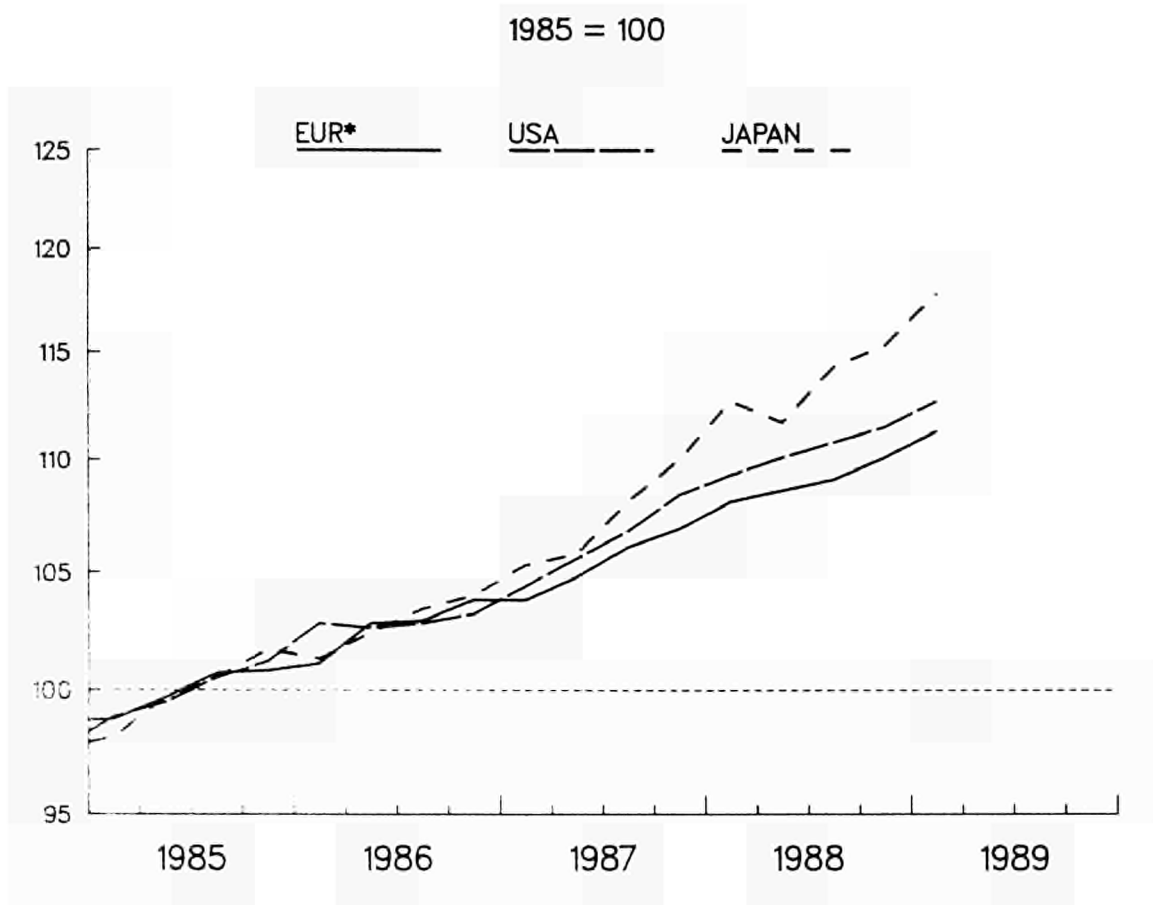
P R I C E S

P R I X



% veraenderung zum letzten quartal (sais. ber.)  
 % change compared with previous quarter (seas. adj.)  
 % par rapport au trimestre précédent (cvs)

\* voir notes explicatives  
 see explanatory notes  
 siehe Erläuterungen



EINFACH-LOGARITHMISCHE SKALA  
• siehe Erläuterungen

SEMI-LOGARITHMIC SCALE  
• see explanatory notes

ECHELLE SEMI-LOGARITHMIQUE  
• voir notes explicatives

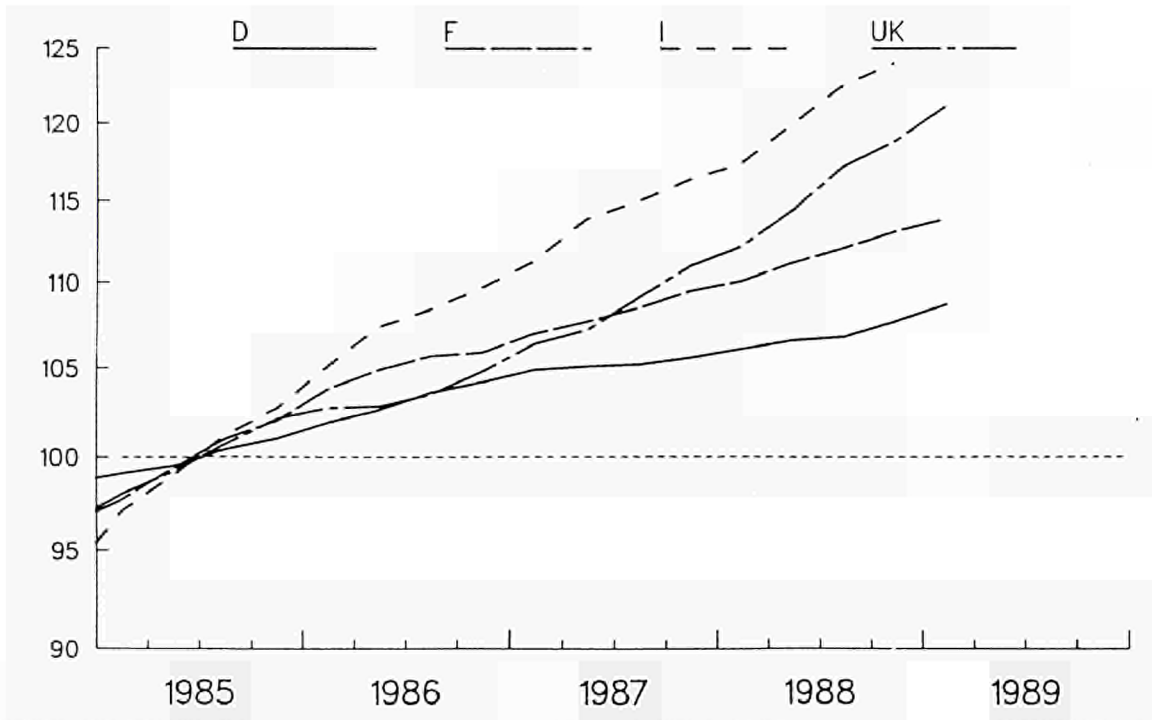
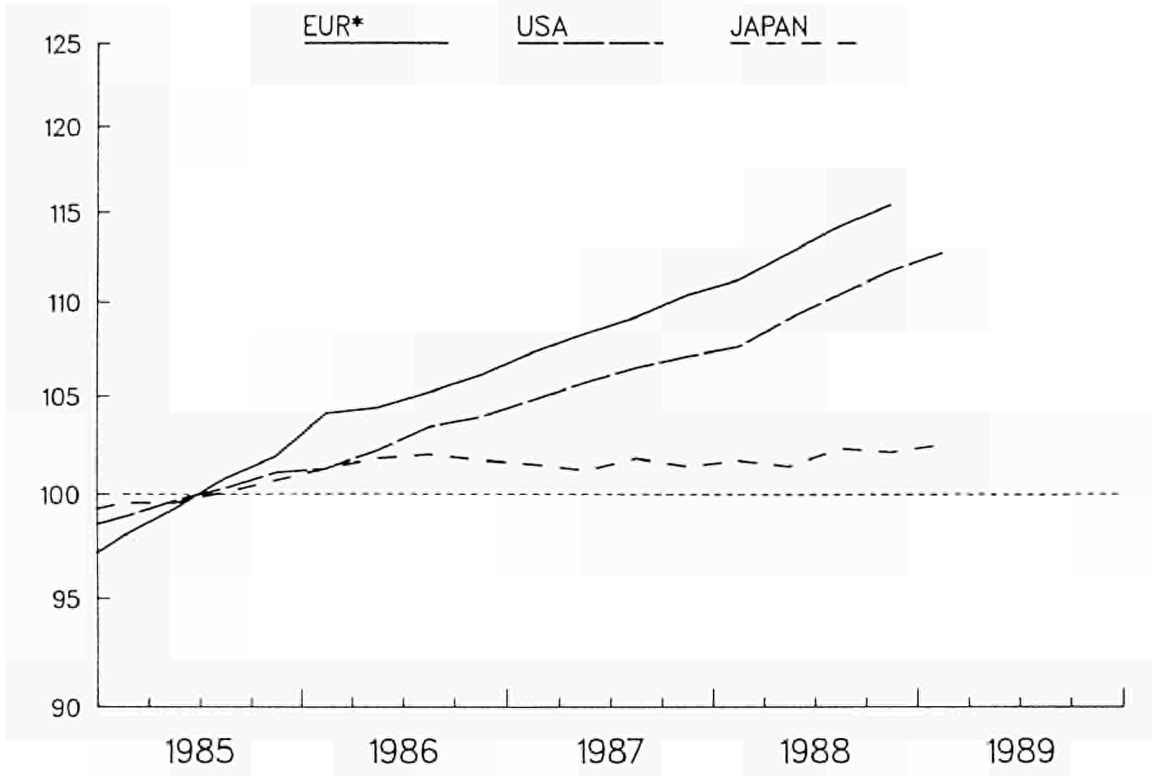
GROWTH OF GDP AND ITS COMPONENTS  
%  
VOLUME

	GDP	PRIVATE CONSUMPTION	GOVERNMENT CONSUMPTION	GROSS FIXED CAP. FORMAT	CHANGE IN STOCKS (1)	DOMESTIC DEMAND	EXTERNAL BALANCE (1)	EXPORTS	IMPORTS
<b>EUR (2)</b>									
1987	2.8	3.8	2.3	4.8	1.1	4.1	-1.3	3.9	8.2
1988 (*)	3.7	3.7	1.9	7.3	1.5	4.7	-2.3	5.4	8.5
1989 (*)	3.0	2.7	1.6	5.7	1.5	3.6	-2.7	5.6	6.4
1990 (*)	3.0	3.0	1.7	4.9	1.4	3.1	-2.8	5.5	6.0
1987 I	0.0	0.6	0.0	-0.3	1.1	0.4	-0.6	0.0	1.2
II	1.0	1.8	1.1	2.8	0.7	1.5	-1.1	1.3	2.7
III	1.2	1.1	0.9	1.6	1.0	1.4	-1.2	2.2	2.6
IV	0.7	1.3	0.3	1.8	0.9	1.2	-1.6	2.0	3.3
1988 I	1.1	0.7	0.1	2.7	1.1	1.2	-1.8	-1.7	-1.2
II	0.5	0.2	0.8	1.3	1.1	0.4	-1.7	4.2	3.8
III	0.4	1.5	0.4	0.8	1.3	1.4	-2.7	-0.9	2.3
IV	0.9	0.6	0.2	1.0	2.1	1.4	-3.3	1.6	3.2
1989 I	1.2	0.5	0.1	4.4	1.3	0.4	-2.5	3.7	1.3
<b>UNITED STATES</b>									
1987	3.6	2.7	2.9	3.0	0.8	3.0	-3.0	15.5	6.8
1988 (*)	3.8	2.7	0.0	6.3	0.8	3.0	-2.4	18.3	8.4
1989 (*)	2.8	2.6	3.0	4.2	0.6	2.3	-2.2	9.9	7.5
1990 (*)	2.0	2.2	0.4	1.8	:	:	-2.0	5.9	4.1
1987 I	1.1	0.2	-0.2	-1.7	0.9	4.0	-2.5	1.8	-0.5
II	1.2	1.1	-0.1	2.5	0.8	3.9	-2.3	5.4	2.8
III	1.1	1.1	1.4	3.6	0.4	4.4	-2.3	5.9	5.4
IV	1.5	-0.5	1.2	0.4	1.9	6.0	-2.1	4.2	2.4
1988 I	0.8	1.1	-2.0	0.8	1.9	1.5	-1.7	5.9	1.7
II	0.7	0.8	1.0	2.5	1.0	0.8	-1.3	2.2	-0.9
III	0.6	1.0	-1.3	1.0	1.1	2.5	-1.3	3.4	3.1
IV	0.6	0.9	2.8	0.2	0.8	3.4	-1.6	1.6	3.2
1989 I	1.1	0.3	0.3	1.0	1.0	2.4	-1.1	3.6	-0.1
<b>JAPAN</b>									
1987	4.3	3.9	-0.5	10.3	0.2	5.0	1.5	3.7	9.6
1988 (*)	5.6	5.3	2.3	13.6	0.2	7.4	0.0	6.9	22.0
1989 (*)	4.1	4.1	2.0	6.6	0.2	4.6	-0.2	6.3	9.4
1990 (*)	3.5	3.0	2.3	6.0	:	:	-0.4	5.3	6.8
1987 I	1.2	1.7	-11.4	2.0	0.1	2.3	2.7	2.4	-1.1
II	0.4	0.9	1.4	2.4	0.3	6.1	-1.7	-1.6	5.9
III	2.2	1.3	-0.3	3.8	0.3	7.6	2.0	6.0	4.7
IV	1.7	0.9	0.2	5.6	0.4	9.7	1.3	-0.4	4.6
1988 I	2.4	2.2	0.9	4.4	0.5	11.5	-1.1	3.4	4.9
II	-0.8	0.6	0.5	-0.3	0.6	1.6	-0.2	-3.8	5.1
III	2.3	1.4	0.7	3.2	0.5	7.3	0.2	10.1	7.5
IV	0.8	0.0	0.7	3.2	0.4	4.1	0.2	0.6	0.4
1989 I	2.2	1.9	0.3	3.9	0.0	8.1	0.0	7.6	8.6
<b>DEUTSCHLAND</b>									
1987	1.9	3.4	1.3	1.8	0.4	3.2	1.3	0.7	5.0
1988 (*)	3.4	2.7	1.3	5.4	0.5	3.5	1.2	5.0	6.2
1989 (*)	2.5	1.9	0.3	4.1	0.5	2.5	1.7	6.0	5.1
1990 (*)	3.0	3.1	1.1	4.7	0.5	2.9	1.8	6.3	7.1
1987 I	0.7	0.2	0.3	-4.6	-	-0.7	2.0	-1.1	0.5
II	0.9	3.4	0.4	5.9	-	4.9	1.8	1.8	2.7
III	1.2	0.3	1.0	1.4	-	3.7	2.1	1.2	0.3
IV	0.9	1.2	0.2	0.0	-	5.3	1.7	2.2	3.6
1988 I	1.3	0.3	0.2	5.1	-	4.4	1.8	0.5	-0.2
II	-0.1	-0.4	0.6	-1.9	-	-0.3	1.9	1.4	1.5
III	1.1	1.3	1.0	-0.5	-	3.6	2.1	1.0	0.4
IV	0.3	0.0	-0.5	1.1	-	3.9	1.4	2.3	4.5
1989 I	2.9	0.5	-0.7	11.1	-	2.3	3.6	5.0	-1.6
<b>FRANCE</b>									
1987	2.2	2.5	2.4	3.7	2.9	4.2	-2.4	2.6	7.5
1988 (*)	3.4	2.5	2.2	6.2	3.9	4.2	-2.6	5.8	6.5
1989 (*)	3.1	2.4	2.4	5.4	3.8	2.9	-2.5	5.9	5.2
1990 (*)	3.1	2.5	2.3	5.5	3.7	3.0	-2.4	5.7	5.3
1987 I	-0.2	0.7	1.0	0.4	4.5	9.9	-2.5	-1.2	4.6
II	1.0	0.6	0.8	0.8	5.0	4.7	-2.3	1.8	0.8
III	0.8	0.8	0.7	2.2	3.4	-2.0	-2.2	3.1	2.7
IV	1.0	1.3	0.5	2.0	2.4	1.4	-2.3	4.1	4.1
1988 I	1.2	0.1	0.6	2.2	3.4	6.3	-2.0	0.4	-0.6
II	0.2	0.2	0.6	0.7	5.3	8.9	-2.6	0.3	2.7
III	1.0	1.7	0.4	3.5	3.5	0.2	-3.0	0.8	2.4
IV	0.6	0.3	0.3	-0.9	7.2	14.6	-3.4	2.0	3.0
1989 I	1.1	0.5	0.3	2.7	3.2	-11.2	-2.2	6.5	1.5
<b>ITALIA</b>									
1987	3.1	4.6	3.4	5.2	2.2	4.9	-2.7	3.6	10.5
1988 (*)	3.8	4.3	2.7	6.2	2.4	4.1	-3.0	7.0	8.0
1989 (*)	3.3	3.6	2.9	4.7	2.4	3.8	-3.4	6.4	7.0
1990 (*)	3.5	4.4	2.8	3.6	2.3	3.6	-3.9	6.0	8.0
1987 I	0.4	1.1	0.7	2.1	1.2	2.5	-3.1	1.0	2.1
II	1.2	1.0	0.9	2.6	1.6	6.8	-3.6	1.5	3.5
III	0.4	1.1	0.8	0.1	1.4	2.7	-3.9	2.1	3.1
IV	1.8	0.9	0.6	2.1	2.2	7.8	-3.9	3.6	5.4
1988 I	1.0	0.8	0.5	0.8	2.6	4.5	-4.0	-6.3	-4.8
II	0.7	1.0	1.3	1.3	0.9	-2.5	-3.0	13.3	6.9
III	0.7	1.0	0.7	0.7	2.7	10.7	-4.7	-4.7	2.9
IV	1.0	1.0	0.3	1.8	2.1	2.1	-4.3	4.8	2.2
1989 I	0.7	0.6	0.3	1.0	3.3	7.3	-5.3	-1.2	2.9
<b>UNITED KINGDOM</b>									
1987	3.8	5.1	0.9	5.5	0.1	4.3	-0.1	5.6	7.4
1988 (*)	4.1	6.2	0.6	8.7	0.5	6.5	-3.9	0.3	12.3
1989 (*)	2.9	2.5	0.5	6.0	0.2	3.3	-5.1	3.5	6.3
1990 (*)	2.1	1.9	0.4	3.3	0.0	1.7	-4.6	4.2	3.1
1987 I	0.7	0.8	-1.6	1.7	-0.1	-0.8	1.1	1.5	-1.6
II	0.9	1.7	2.2	1.3	0.2	6.0	0.1	0.0	3.6
III	-2.5	2.3	1.0	2.9	1.2	12.8	-0.6	-2.6	4.9
IV	-0.8	1.9	-0.2	3.7	-0.3	0.9	-1.6	-1.3	2.2
1988 I	1.0	1.8	-0.8	2.2	0.1	7.2	-2.4	-2.9	0.2
II	1.3	0.0	0.6	6.4	0.6	7.0	-2.9	5.1	5.1
III	-1.4	2.1	-0.3	-0.4	-0.3	1.5	-4.7	-3.0	3.8
IV	1.8	1.5	0.6	1.8	1.5	12.6	-6.1	-2.2	5.5
1989 I	-0.4	0.6	0.4	1.2	0.5	-1.3	-6.2	3.7	3.2

% CHANGE COMPARED WITH PREVIOUS PERIOD (FOR QUARTERS, SEAS. ADJUSTED)  
(1) PERCENT OF GDP  
(\*) FORECASTS

(2) SEE EXPLANATORY NOTES

1985 = 100



EINFACH-LOGARITHMISCHE SKALA  
• siehe Erläuterungen

SEMI-LOGARITHMIC SCALE  
• see explanatory notes

ECHELLE SEMI-LOGARITHMIQUE  
• voir notes explicatives

## CHANGE IN PRICE OF GDP AND ITS COMPONENTS

%

	GDP	PRIVATE CONSUMPTION	GOVERNMENT CONSUMPTION	GROSS FIXED CAP. FORMAT	DOMESTIC DEMAND	EXPORTS	IMPORTS
<b>EUR (2)</b>							
1987	4.0	3.4	5.0	3.2	3.4	0.6	-1.0
1988 (*)	4.2	3.5	4.7	4.4	3.8	3.2	2.4
1989 (*)	5.1	5.0	4.5	6.2	4.8	6.5	6.8
1990 (*)	4.8	4.4	4.9	4.9	4.7	4.5	4.1
1987 I	1.2	0.9	1.5	0.5	1.4	0.5	-0.2
II	0.9	0.6	2.5	2.7	1.7	0.4	1.5
III	0.8	0.8	0.9	-0.2	0.1	1.1	1.0
IV	1.1	0.7	1.5	0.8	0.8	-0.1	-0.9
1988 I	0.7	0.8	0.0	0.8	3.0	-0.3	-0.1
II	1.4	1.0	1.7	1.0	-0.6	1.2	0.9
III	1.3	0.9	1.8	1.0	1.4	2.4	1.5
IV	1.1	0.8	0.9	0.2	0.7	0.8	0.1
1989 I	:	:	:	:	:	:	:
<b>UNITED STATES</b>							
1987	3.1	4.2	3.6	1.1	3.7	-1.2	5.5
1988 (*)	3.4	4.1	:	:	:	:	:
1989 (*)	4.7	5.1	:	:	:	:	:
1990 (*)	4.6	:	:	:	:	:	:
1987 I	0.9	1.4	2.2	0.0	1.1	0.8	3.5
II	0.9	1.3	1.4	0.2	1.1	0.0	2.0
III	0.8	1.1	0.4	-0.2	0.8	-0.2	-0.4
IV	0.6	1.1	0.4	0.3	0.5	0.2	1.1
1988 I	0.5	0.6	1.9	-0.1	0.6	0.2	0.8
II	1.4	1.4	0.8	-0.2	1.4	1.7	0.5
III	1.2	1.1	0.7	0.2	0.9	2.2	0.0
IV	1.2	1.1	1.5	1.8	1.3	0.6	1.3
1989 I	0.9	1.2	1.0	0.5	1.0	1.1	2.7
<b>JAPAN</b>							
1987	-0.2	-0.1	2.2	-1.3	-0.2	-2.7	-1.9
1988 (*)	0.5	0.3	:	:	:	:	-12.7
1989 (*)	3.1	3.2	:	:	:	:	-3.0
1990 (*)	3.0	2.7	:	:	:	:	:
1987 I	-0.2	-0.2	9.0	-0.6	0.4	0.1	2.5
II	-0.3	0.5	0.1	-1.2	-0.2	-3.5	3.5
III	0.6	0.2	1.4	0.9	0.6	2.5	4.5
IV	-0.4	-0.8	-2.1	0.8	-0.4	-2.1	-5.6
1988 I	0.3	-0.1	1.5	-1.7	-0.4	0.2	-4.3
II	-0.3	:	:	:	:	:	:
III	0.8	:	:	:	:	:	:
IV	-0.2	:	:	:	:	:	:
1989 I	0.4	:	:	:	:	:	:
<b>DEUTSCHLAND</b>							
1987	2.0	0.7	2.2	1.3	1.1	-1.0	-4.7
1988 (*)	1.8	1.4	1.3	1.5	1.3	2.2	0.8
1989 (*)	2.3	2.6	1.6	2.4	3.7	3.7	4.9
1990 (*)	2.3	2.2	1.6	2.2	2.8	3.4	3.5
1987 I	0.7	0.4	0.4	0.4	0.3	-0.1	-1.4
II	0.1	0.1	2.6	0.1	0.4	-0.2	1.1
III	0.1	0.1	-0.8	0.1	0.3	0.5	1.1
IV	0.5	0.3	0.3	0.5	0.1	0.3	-0.6
1988 I	0.4	0.4	0.1	0.2	0.3	0.1	-0.7
II	0.5	0.4	0.7	0.5	0.6	0.7	1.1
III	0.2	0.4	0.4	0.8	0.4	0.9	1.9
IV	0.8	0.4	0.3	0.4	0.3	0.7	-0.7
1989 I	1.0	2.0	1.3	0.3	1.7	1.1	2.7
<b>FRANCE</b>							
1987	2.8	3.1	2.0	2.8	1.8	-0.3	-0.5
1988 (*)	2.7	2.7	2.5	3.1	1.9	4.4	3.8
1989 (*)	2.8	2.9	2.6	3.3	3.2	5.2	6.2
1990 (*)	2.8	2.7	2.4	3.1	2.7	3.2	3.0
1987 I	1.0	1.0	0.6	0.7	-0.7	0.6	-0.5
II	0.7	0.9	0.7	0.0	1.7	-0.2	1.5
III	0.7	0.5	0.7	-0.4	0.7	1.8	0.8
IV	1.0	0.5	1.6	0.0	1.6	-0.1	0.8
1988 I	0.5	0.5	-0.6	1.5	0.1	-0.4	0.3
II	1.0	0.9	0.8	0.8	-0.9	1.8	0.0
III	0.8	0.8	0.7	0.6	-2.0	2.6	1.6
IV	0.9	0.6	0.5	0.9	-1.9	0.6	0.5
1989 I	0.7	0.9	1.3	0.8	4.2	2.5	4.6
<b>ITALIA</b>							
1987	5.6	4.8	9.2	2.8	4.7	2.5	-0.1
1988 (*)	5.4	5.1	5.3	4.1	5.6	4.3	3.8
1989 (*)	5.1	5.5	5.5	4.1	6.6	4.3	4.7
1990 (*)	5.8	5.5	5.0	4.5	6.5	4.1	2.9
1987 I	1.5	1.3	1.6	0.6	1.6	0.3	1.3
II	2.3	1.4	8.0	1.3	2.4	1.3	2.9
III	1.0	1.6	0.5	1.1	1.0	0.9	1.3
IV	1.2	1.6	2.6	1.9	0.7	1.4	-0.6
1988 I	0.9	0.9	0.7	1.2	1.2	-0.4	0.6
II	2.1	1.4	2.4	0.6	2.4	1.6	2.1
III	2.1	1.4	2.9	1.2	1.2	2.8	0.6
IV	1.2	1.4	1.3	0.3	1.3	1.7	2.0
1989 I	:	:	:	:	:	:	:
<b>UNITED KINGDOM</b>							
1987	4.9	3.9	6.7	5.1	4.7	3.4	2.7
1988 (*)	6.1	5.0	5.9	6.8	5.4	1.3	0.1
1989 (*)	6.5	5.6	6.6	6.2	6.2	4.6	1.9
1990 (*)	5.7	5.0	6.8	5.2	5.9	3.5	2.4
1987 I	1.5	1.0	3.0	0.1	1.3	1.4	0.3
II	0.7	0.3	-0.2	4.0	0.7	0.9	1.0
III	1.7	1.3	2.7	2.5	1.5	1.5	0.8
IV	1.7	1.2	1.5	0.7	1.4	-1.8	-2.3
1988 I	1.1	1.3	0.0	0.3	1.0	-0.8	-0.3
II	2.0	1.6	3.0	2.5	1.8	0.9	0.5
III	2.4	1.4	2.9	1.3	1.6	3.9	1.7
IV	1.4	1.1	1.5	-0.8	0.8	0.3	-1.0
1989 I	1.9	1.4	-0.1	1.1	1.4	3.1	1.0

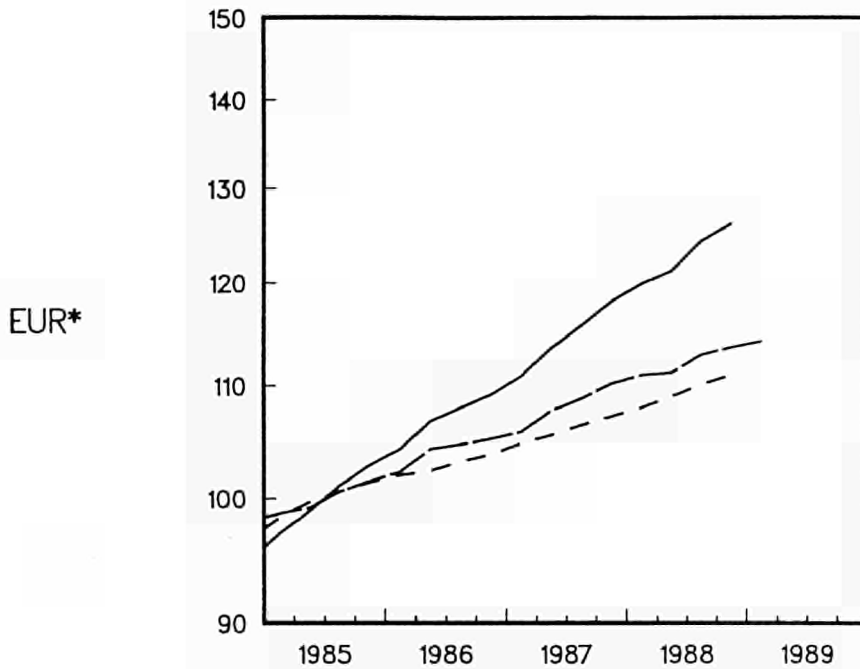
% CHANGE COMPARED WITH PREVIOUS PERIOD (FOR QUARTERS, SEAS. ADJUSTED DATA)  
 (\*) FORECASTS  
 (2) SEE EXPLANATORY NOTES

PRIVATER  
VERBRAUCH

PRIVATE  
CONSUMPTION

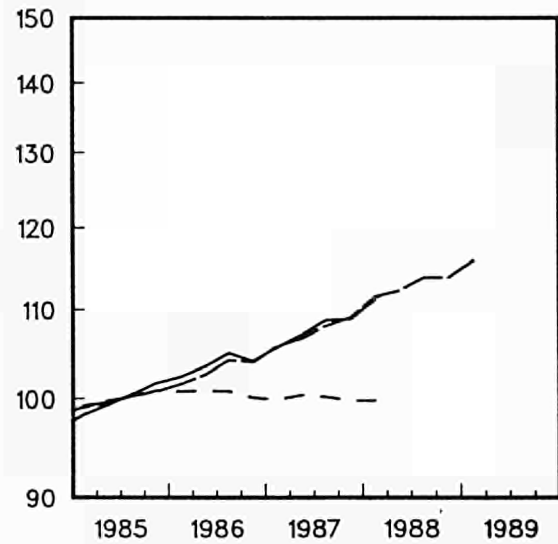
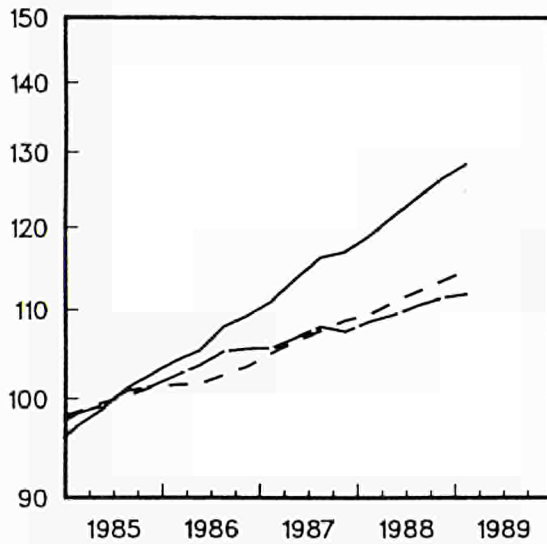
CONSOMMATION  
PRIVEE

1985 = 100



USA

JAPAN



- in jew. Preisen (sais. ber.), At current prices (seas. adj.), Aux prix courants (cvs)
- in Preisen von 1985 (sais. ber.), At 1985 prices (seas. adj.), Aux prix de 1985 (cvs)
- - - - implizierter Preisindex (sais. ber.), Implied deflator (seas. adj.), Ind. implicite des prix (cvs)

EINFACH-LOGARITHMISCHE SKALA  
• siehe Erläuterungen

SEMI-LOGARITHMIC SCALE  
• see explanatory notes

ECHELLE SEMI-LOGARITHMIQUE  
• voir notes explicatives



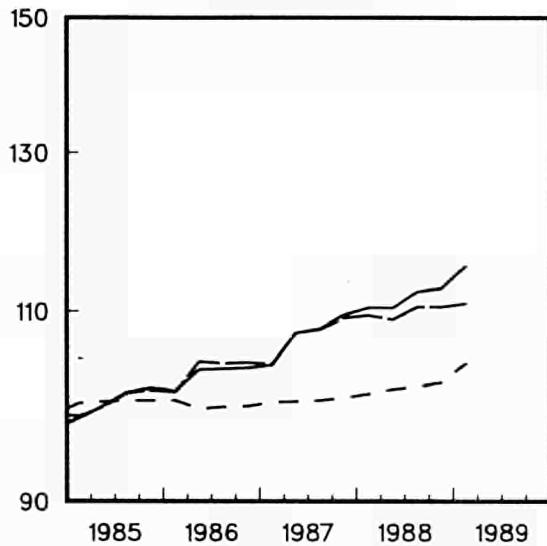
PRIVATER  
VERBAUCH

PRIVATE  
CONSUMPTION

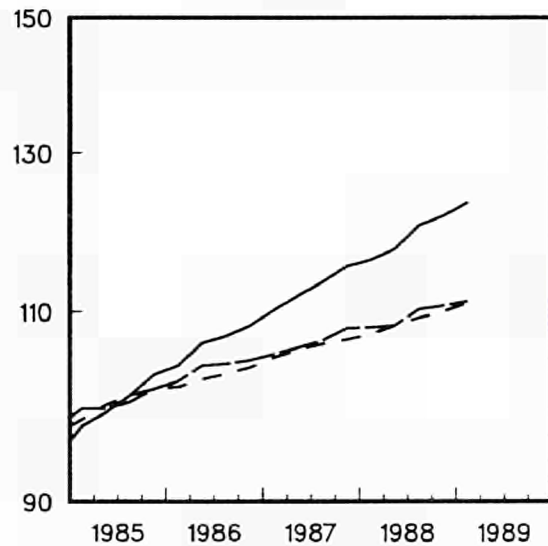
CONSOMMATION  
PRIVEE

1985 = 100

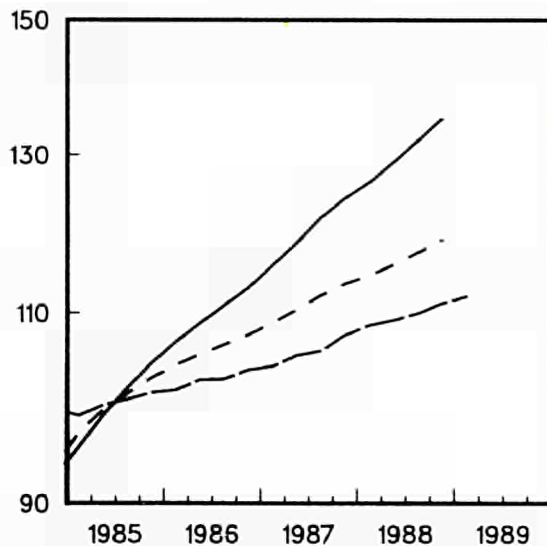
DEUTSCHLAND



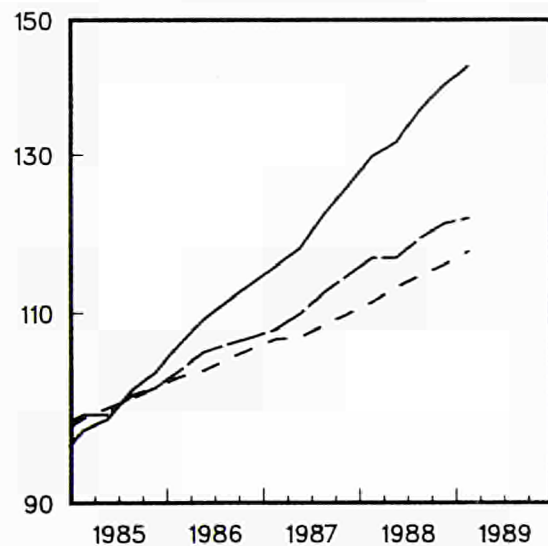
FRANCE



ITALIA



UNITED KINGDOM



- in jew. Preisen (sais. ber.), At current prices (seas. adj.), Aux prix courants (cvs)
- in Preisen von 1985 (sais. ber.), At 1985 prices (seas. adj.), Aux prix de 1985 (cvs)
- - - - implizierter Preisindex (sais. ber.), Implied deflator (seas. adj.), Ind. implicite des prix (cvs)

EINFACH-LOGARITHMISCHE SKALA

SEMI-LOGARITHMIC SCALE

ECHELLE SEMI-LOGARITHMIQUE

## **Symbols and abbreviations**

<b>:</b>	No data available
<b>-</b>	Nil
<b>%</b>	Per cent
<b>1985 = 100</b>	Reference year
<b>EUR 12 = 100</b>	Data for countries expressed as a percentage of the Community of 12 total (= 100)
<b>ESA</b>	European system of integrated economic accounts

Venta y suscripciones · Salg og abonnement · Verkauf und Abonnement · Πωλήσεις και συνδρομές  
Sales and subscriptions · Vente et abonnements · Vendita e abbonamenti  
Verkoop en abonnementen · Venda e assinaturas

BELGIQUE / BELGIË

**Moniteur belge / Belgisch Staatsblad**

42, Rue de Louvain / Leuvenseweg 42  
1000 Bruxelles / 1000 Brussel  
Tél. 512 00 26  
CCP / Postrekening 000-2005502-27

Sous-dépôts / Agentschappen:

**Librairie européenne /  
Europese Boekhandel**

Rue de la Loi 244 / Wetstraat 244  
1040 Bruxelles / 1040 Brussel

**Jean De Lannoy**

Avenue du Roi 202 / Koningslaan 202  
1060 Bruxelles / 1060 Brussel  
Tél. (02) 538 5169  
Télex 63220 UNBOOK B

**CREDOC**

Rue de la Montagne 34 / Bergstraat 34  
Bte 11 / Bus 11  
1000 Bruxelles / 1000 Brussel

DANMARK

**J. H. Schultz Information A/S**

**EF-Publikationer**

Otttilavej 18  
2500 Valby  
Tlf: 01 44 23 00  
Telefax: 01 44 15 12  
Girokonto 6 00 08 86

BR DEUTSCHLAND

**Bundesanzeiger Verlag**

Breite Straße  
Postfach 10 80 06  
5000 Köln 1  
Tel. (02 21) 20 29-0  
Fernschreiber:  
ANZEIGER BONN 8 882 595  
Telefax: 20 29 278

GREECE

**G.C. Eleftheroudakis SA**

International Bookstore  
4 Nikis Street  
105 63 Athens  
Tel.: 322 22 55  
Telex: 219410 ELEF  
Telefax: 3254 889

Sub-agent for Northern Greece:

**Molho's Bookstore**

The Business Bookshop  
10 Tsimiski Street  
Thessaloniki  
Tel. 275 271  
Telex 412885 LIMO

ESPAÑA

**Boletín Oficial del Estado**

Trafalgar 27  
E-28010 Madrid  
Tel. (91) 446 60 00

**Mundi-Prensa Libros, S.A.**

Castelló 37  
E-28001 Madrid  
Tel. (91) 431 33 99 (Libros)  
431 32 22 (Suscripciones)  
435 36 37 (Dirección)  
Telex 49370-MPLI-E  
Telefax: (91) 275 39 98

FRANCE

**Journal officiel**

**Service des publications  
des Communautés européennes**

26, rue Desaix  
75727 Paris Cedex 15  
Tél. (1) 40 58 75 00  
Télécopieur: (1) 4058 7574

IRELAND

**Government Publications Sales Office**

Sun Alliance House  
Molesworth Street  
Dublin 2  
Tel. 71 03 09

or by post

**Government Stationery Office**

**EEC Section**

6th floor  
Bishop Street  
Dublin 8  
Tel. 78 16 66

ITALIA

**Licosa Spa**

Via Benedetto Fortini, 120/10  
Casella postale 552  
50 125 Firenze  
Tel. 64 54 15  
Telefax: 64 12 57  
Telex 570466 LICOSA I  
CCP 343 509

Subagenti:

**Libreria scientifica Lucio de Biasio -AEIOU**

Via Meravigli, 16  
20 123 Milano  
Tel. 80 76 79

**Herder Editrice e Libreria**

Piazza Montecitorio, 117-120  
00 186 Roma  
Tel. 67 94 628/67 95 304

**Libreria giuridica**

Via 12 Ottobre, 172/R  
16 121 Genova  
Tel. 59 56 93

GRAND-DUCHÉ DE LUXEMBOURG

Abonnements seulement  
Subscriptions only  
Nur für Abonnements

**Messageries Paul Kraus**

11, rue Christophe Plantin  
L-2339 Luxembourg  
Tél. 48 21 31  
Télex 2515  
CCP 49242-63

NEDERLAND

**SDU uitgeverij**

Christoffel Plantijnstraat 2  
Postbus 20014  
2500 EA 's-Gravenhage  
Tel. (070) 78 98 80 (bestellingen)  
Telefax: (070) 476351

PORTUGAL

**Imprensa Nacional**

Casa da Moeda, E.P.  
Rua D. Francisco Manuel de Melo, 5  
1092 Lisboa Codex  
Tel. 69 34 14

**Distribuidora Livros Bertrand Lda.**

**Grupo Bertrand, SARL**

Rua das Terras dos Vales, 4-A  
Apart. 37  
2700 Amadora Codex  
Tel. 493 90 50 - 494 87 88  
Telex 15798 BERDIS

UNITED KINGDOM

**HMSO Books (PC 16)**

HMSO Publications Centre  
51 Nine Elms Lane  
London SW8 5DR  
Tel. (01) 873 9090  
Fax: GP3 873 8463

Sub-agent:

**Alan Armstrong Ltd**

2 Arkwright Road  
Reading, Berks RG2 0SQ  
Tel. (0734) 75 17 71  
Telex 849937 AAALTD G  
Fax: (0734) 755164

OSTERREICH

**Manz'sche Verlagsbuchhandlung**

Kohlmarkt 16  
1014 Wien  
Tel. (0222) 533 17 81  
Telex 11 25 00 BOX A  
Telefax: (0222) 533 17 81 81

TURKIYE

**Dünya süper veb ofset A.Ş.**

Narlıbahçe Sokak No. 15  
Cağaloğlu  
İstanbul  
Tel. 512 01 90  
Telex: 23822 dsvo-tr.

UNITED STATES OF AMERICA

**European Community Information  
Service**

2100 M Street, NW  
Suite 707  
Washington, DC 20037  
Tel. (202) 862 9500

CANADA

**Renouf Publishing Co., Ltd**

61 Sparks Street  
Ottawa  
Ontario K1P 5R1  
Tel. Toll Free 1 (800) 267 4164  
Ottawa Region (613) 238 8985-6  
Telex 053-4936

JAPAN

**Kinokuniya Company Ltd**

17-7 Shinjuku 3-Chome  
Shinjuku-ku  
Tokyo 160-91  
Tel. (03) 354 0131

**Journal Department**

PO Box 55 Chitose  
Tokyo 156  
Tel. (03) 439 0124

AUTRES PAYS  
OTHER COUNTRIES  
ANDERE LANDER

**Office des publications officielles  
des Communautés européennes**

2, rue Mercier  
L-2985 Luxembourg  
Tél. 49 92 81  
Télex PUBOF LU 1324 b  
CC bancaire BIL 8-109/6003/700

Price (excl. VAT) in Luxembourg: Single copy ECU 5.10 • Subscription ECU 18.50



OFICINA DE PUBLICACIONES OFICIALES DE LAS COMUNIDADES EUROPEAS  
KONTORET FOR DE EUROPÆISKE FÆLLESSKABERS OFFICIELLE PUBLIKATIONER  
AMT FÜR AMTLICHE VERÖFFENTLICHUNGEN DER EUROPÄISCHEN GEMEINSCHAFTEN  
ΥΠΗΡΕΣΙΑ ΕΠΙΣΗΜΩΝ ΕΚΔΟΣΕΩΝ ΤΩΝ ΕΥΡΩΠΑΪΚΩΝ ΚΟΙΝΟΤΗΤΩΝ  
OFFICE FOR OFFICIAL PUBLICATIONS OF THE EUROPEAN COMMUNITIES  
OFFICE DES PUBLICATIONS OFFICIELLES DES COMMUNAUTÉS EUROPÉENNES  
UFFICIO DELLE PUBBLICAZIONI UFFICIALI DELLE COMUNITÀ EUROPEE  
BUREAU VOOR OFFICIËLE PUBLIKATIES DER EUROPESE GEMEENSCHAPPEN  
SERVIÇO DAS PUBLICAÇÕES OFICIAIS DAS COMUNIDADES EUROPEIAS

ISSN 1010-1764

L - 2985 Luxembourg

Catalogue number: CA-BY-89-002-EN-C