



# STATISTICS IN FOCUS

## Energy and industry

1998  14

ISSN 1024-4328

### Electricity prices for EU industry on 1 January 1998: downward trend


These comments are based on prices collected within the framework of Council Directive 90/377/EEC expressed in national currency. For the comparative tables and the graphics, prices in ECU and purchasing power standards (PPS) have been used.

A study of the variations in deflated VAT-excluded electricity prices from 1 July 1997 to 1 January 1998 reveals that in most locations<sup>1</sup> prices showed a drop which affected all categories of standard consumers.

The biggest drops affected in Germany prices for la<sup>2</sup> (-24.4%), lb (-16.8%) and lc (-9.9%) in Stuttgart, lh and li in Munich and in Erfurt (between -8.2% and -12.6%) as well as in United Kingdom those of la and lb (-8.5%) in Glasgow. In Sweden the drop for ld was -9.2%

The rises affected mainly prices in Denmark for lc to li (between +5.9% and +7.5%).

Variation in deflated VAT-excluded prices in national currency  
(number of locations)

	la	lb	lc	ld	le	lf	lg	lh	li
Downward trend	33	33	31	31	31	29	28	27	28
Upward trend	3	3	4	3	4	5	3	4	2

<sup>1</sup> The collection locations are listed above and to the right of the price tables.  
<sup>2</sup> See table below for standard consumers definition.

# Marker prices in national currency



1 January 1998

(/ kWh)

	25 MW			50 MW			75 MW		
	With taxes	VAT excl.	Taxes excl.	With taxes	VAT excl.	Taxes excl.	With taxes	VAT excl.	Taxes excl.
<b>BELGIUM</b>	<b>BEF</b>								
National	2.16	1.78	1.78	2.02	1.67	1.67	2.00	1.65	1.65
<b>GERMANY</b>	<b>1 / 100 DEM</b>								
North-center									
Lowest	12.54	10.90	10.90	12.04	10.47	10.47	11.60	10.09	10.09
Highest	13.94	12.12	12.12	13.54	11.77	11.77	13.25	11.52	11.52
West									
Lowest	11.33	9.85	9.85	10.69	9.29	9.29	10.23	8.89	8.89
Highest	14.40	12.52	12.52	14.00	12.17	12.17	13.67	11.89	11.89
South									
Lowest	12.80	11.13	11.13	12.16	10.57	10.57	11.73	10.20	10.20
Highest	15.35	13.35	13.35	15.12	13.15	13.15	14.78	12.85	12.85
East									
Lowest	13.21	11.49	11.49	12.96	11.27	11.27	12.77	11.10	11.10
Highest	16.61	14.44	14.44	16.19	14.08	14.08	15.82	13.76	13.76
<b>GREECE</b>	<b>GDR</b>								
National	14.28	12.10	12.10	14.28	12.10	12.10	14.28	12.10	12.10
<b>SPAIN</b>	<b>ESP</b>								
National	5.73	4.94	4.70	5.73	4.94	4.70	5.73	4.94	4.70
<b>FRANCE</b>	<b>1 / 100 FRF</b>								
National									
Base : 5000 Hours	35.79	29.68	29.68	32.73	27.14	27.14	31.71	26.29	26.29
Base : -6%	33.65	27.90	27.90	30.77	25.51	25.51	29.80	24.71	24.71
Base : -8%	32.94	27.31	27.31	30.11	24.97	24.97	29.17	24.19	24.19
Base : -10%	32.21	26.71	26.71	29.46	24.43	24.43	28.53	23.66	23.66
<b>ITALY</b>	<b>ITL</b>								
National	117.83	107.12	89.10	115.34	104.85	86.97	114.51	104.10	86.26
<b>NETHERLANDS</b>	<b>1 / 100 NLG</b>								
National									
Lowest	11.64	9.91	9.91	11.75	10.00	10.00	:	:	:
Highest	12.53	10.66	10.66	12.43	10.58	10.58	:	:	:
<b>PORTUGAL</b>	<b>PTE</b>								
National									
Lowest	8.85	8.43	8.43	9.31	8.87	8.87	:	:	:
Highest	11.16	10.63	10.63	10.43	9.93	9.93	:	:	:
Reference	9.68	9.22	9.22	10.02	9.54	9.54	:	:	:
<b>UNITED KINGDOM</b>	<b>1 / 100 GBP</b>								
National	3.94	3.35	3.35	3.70	3.15	3.15	:	:	:
<b>NORWAY</b>	<b>1 / 100 NOK</b>								
National									
Lowest	13.90	11.30	11.30	13.80	11.20	11.20	10.70	8.70	8.70
Highest	23.10	18.80	18.80	24.30	19.70	19.70	27.60	22.40	22.40

DENMARK, LUXEMBOURG, IRELAND, AUSTRIA, FINLAND 75 MW :  
Confidential marker prices, less than 3 consumers in the category

ITALIA :  
"national" series since 1.1.94

# Electricity prices for industry



1 January 1998

	National currency (/ kWh)			PPS (/ 100 kWh)			ECUS (/ 100 kWh)		
	With taxes	VAT excl.	Taxes excl.	With taxes	VAT excl.	Taxes excl.	With taxes	VAT excl.	Taxes excl.
<b>BELGIUM</b>									
<b>National</b>	<b>BEF</b>								
<sub>a</sub>	7.47	6.17	6.17	18.95	15.66	15.66	18.33	15.14	15.14
<sub>b</sub>	7.30	6.03	6.03	18.51	15.30	15.30	17.89	14.79	14.79
<sub>c</sub>	5.75	4.75	4.75	14.59	12.06	12.06	14.11	11.66	11.66
<sub>d</sub>	4.33	3.58	3.58	10.98	9.07	9.07	10.62	8.77	8.77
<sub>e</sub>	3.68	3.04	3.04	9.33	7.71	7.71	9.02	7.45	7.45
<sub>f</sub>	3.38	2.79	2.79	8.57	7.08	7.08	8.29	6.85	6.85
<sub>g</sub>	2.78	2.30	2.30	7.06	5.83	5.83	6.82	5.64	5.64
<sub>h</sub>	2.46	2.04	2.04	6.25	5.17	5.17	6.04	4.99	4.99
<sub>i</sub>	2.11	1.75	1.75	5.36	4.43	4.43	5.18	4.28	4.28
<b>DENMARK <sup>1</sup></b>									
<b>National</b>	<b>DKK</b>								
<sub>a</sub>	69.76	46.81	40.91	7.46	5.01	4.38	9.28	6.23	5.44
<sub>b</sub>	68.98	46.18	40.28	7.38	4.94	4.31	9.17	6.14	5.36
<sub>c</sub>	69.51	46.61	40.71	7.44	4.99	4.36	9.24	6.20	5.41
<sub>d</sub>	66.98	44.58	38.68	7.17	4.77	4.14	8.91	5.93	5.14
<sub>e</sub>	66.81	44.45	38.55	7.15	4.76	4.12	8.89	5.91	5.13
<sub>f</sub>	65.40	43.32	37.42	7.00	4.64	4.00	8.70	5.76	4.98
<sub>g</sub>	62.99	41.39	35.49	6.74	4.43	3.80	8.38	5.50	4.72
<sub>h</sub>	61.54	40.23	34.33	6.58	4.30	3.67	8.18	5.35	4.57
<sub>i</sub>	60.86	39.69	33.79	6.51	4.25	3.62	8.09	5.28	4.49
<b>GERMANY</b>									
<b>Düsseldorf</b>	<b>1 / 100 DEM</b>								
<sub>a</sub>	30.54	26.56	26.56	13.99	12.16	12.16	15.45	13.44	13.44
<sub>b</sub>	30.11	26.18	26.18	13.79	11.99	11.99	15.24	13.25	13.25
<sub>c</sub>	26.20	22.79	22.79	12.00	10.44	10.44	13.26	11.53	11.53
<sub>d</sub>	21.99	19.12	19.12	10.07	8.76	8.76	11.13	9.67	9.67
<sub>e</sub>	19.98	17.38	17.38	9.15	7.96	7.96	10.11	8.79	8.79
<sub>f</sub>	18.13	15.77	15.77	8.30	7.22	7.22	9.17	7.98	7.98
<sub>g</sub>	13.96	12.14	12.14	6.39	5.56	5.56	7.06	6.14	6.14
<sub>h</sub>	15.12	13.15	13.15	6.92	6.02	6.02	7.65	6.65	6.65
<sub>i</sub>	12.49	10.86	10.86	5.72	4.97	4.97	6.32	5.50	5.50
<b>Hamburg</b>									
<sub>a</sub>	35.12	30.54	30.54	16.08	13.99	13.99	17.77	15.45	15.45
<sub>b</sub>	35.12	30.54	30.54	16.08	13.99	13.99	17.77	15.45	15.45
<sub>c</sub>	27.82	24.19	24.19	12.74	11.08	11.08	14.08	12.24	12.24
<sub>d</sub>	21.63	18.81	18.81	9.91	8.61	8.61	10.94	9.52	9.52
<sub>e</sub>	17.45	15.18	15.18	7.99	6.95	6.95	8.83	7.68	7.68
<sub>f</sub>	17.19	14.95	14.95	7.87	6.85	6.85	8.70	7.56	7.56
<sub>g</sub>	14.03	12.20	12.20	6.43	5.59	5.59	7.10	6.17	6.17
<sub>h</sub>	14.82	12.89	12.89	6.79	5.90	5.90	7.50	6.52	6.52
<sub>i</sub>	12.82	11.14	11.14	5.87	5.10	5.10	6.49	5.64	5.64
<b>Hanover</b>									
<sub>a</sub>	30.48	26.50	26.50	13.96	12.14	12.14	15.42	13.41	13.41
<sub>b</sub>	29.92	26.02	26.02	13.70	11.92	11.92	15.14	13.17	13.17
<sub>c</sub>	25.63	22.29	22.29	11.74	10.21	10.21	12.97	11.28	11.28
<sub>d</sub>	21.21	18.44	18.44	9.71	8.45	8.45	10.73	9.33	9.33
<sub>e</sub>	18.16	15.79	15.79	8.32	7.23	7.23	9.19	7.99	7.99
<sub>f</sub>	17.32	15.06	15.06	7.93	6.90	6.90	8.76	7.62	7.62
<sub>g</sub>	13.55	11.78	11.78	6.21	5.40	5.40	6.86	5.96	5.96
<sub>h</sub>	14.71	12.79	12.79	6.74	5.86	5.86	7.44	6.47	6.47
<sub>i</sub>	12.14	10.56	10.56	5.56	4.84	4.84	6.14	5.34	5.34

<sup>1</sup> The prices excluding VAT does not include the deductible taxes of 5 ORE for the CO<sub>2</sub> tax and of 46.60 ORE for the energy tax. The rate of the SO<sub>2</sub> ( non deductible) is 0.9 ORE/kWh.

# Electricity prices for industry



1 January 1998

	National currency (/ kWh)			PPS (/ 100 kWh)			ECUS (/ 100 kWh)		
	With taxes	VAT excl.	Taxes excl.	With taxes	VAT excl.	Taxes excl.	With taxes	VAT excl.	Taxes excl.
<b>GERMANY</b>	<i>1 / 100 DEM</i>								
<b>Western zone</b>									
I <sub>a</sub>	30.49	26.52	26.52	13.96	12.15	12.15	15.43	13.42	13.42
I <sub>b</sub>	30.50	26.52	26.52	13.97	12.15	12.15	15.43	13.42	13.42
I <sub>c</sub>	25.80	22.43	22.43	11.82	10.27	10.27	13.05	11.35	11.35
I <sub>d</sub>	21.98	19.12	19.12	10.07	8.76	8.76	11.12	9.67	9.67
I <sub>e</sub>	19.60	17.05	17.05	8.98	7.81	7.81	9.92	8.63	8.63
I <sub>f</sub>	17.86	15.53	15.53	8.18	7.11	7.11	9.04	7.86	7.86
I <sub>g</sub>	13.77	11.98	11.98	6.31	5.49	5.49	6.97	6.06	6.06
I <sub>h</sub>	14.90	12.96	12.96	6.82	5.94	5.94	7.54	6.56	6.56
I <sub>i</sub>	12.25	10.65	10.65	5.61	4.88	4.88	6.20	5.39	5.39
<b>Frankfurt/M</b>									
I <sub>a</sub>	47.93	41.68	41.68	21.95	19.09	19.09	24.25	21.09	21.09
I <sub>b</sub>	47.60	41.39	41.39	21.80	18.96	18.96	24.09	20.94	20.94
I <sub>c</sub>	27.51	23.92	23.92	12.60	10.96	10.96	13.92	12.10	12.10
I <sub>d</sub>	22.83	19.86	19.86	10.46	9.10	9.10	11.55	10.05	10.05
I <sub>e</sub>	18.75	16.31	16.31	8.59	7.47	7.47	9.49	8.25	8.25
I <sub>f</sub>	18.71	16.27	16.27	8.57	7.45	7.45	9.47	8.23	8.23
I <sub>g</sub>	15.44	13.43	13.43	7.07	6.15	6.15	7.81	6.80	6.80
I <sub>h</sub>	16.80	14.61	14.61	7.69	6.69	6.69	8.50	7.39	7.39
I <sub>i</sub>	14.30	12.44	12.44	6.55	5.70	5.70	7.24	6.29	6.29
<b>Stuttgart</b>									
I <sub>a</sub>	31.56	27.44	27.44	14.45	12.57	12.57	15.97	13.88	13.88
I <sub>b</sub>	33.81	29.40	29.40	15.48	13.47	13.47	17.11	14.88	14.88
I <sub>c</sub>	28.18	24.50	24.50	12.91	11.22	11.22	14.26	12.40	12.40
I <sub>d</sub>	24.54	21.34	21.34	11.24	9.77	9.77	12.42	10.80	10.80
I <sub>e</sub>	20.36	17.70	17.70	9.32	8.11	8.11	10.30	8.96	8.96
I <sub>f</sub>	19.27	16.76	16.76	8.83	7.68	7.68	9.75	8.48	8.48
I <sub>g</sub>	16.23	14.11	14.11	7.43	6.46	6.46	8.21	7.14	7.14
I <sub>h</sub>	16.94	14.73	14.73	7.76	6.75	6.75	8.57	7.45	7.45
I <sub>i</sub>	14.72	12.80	12.80	6.74	5.86	5.86	7.45	6.48	6.48
<b>Munich</b>									
I <sub>a</sub>	43.37	37.71	37.71	19.86	17.27	17.27	21.95	19.08	19.08
I <sub>b</sub>	42.85	37.26	37.26	19.63	17.07	17.07	21.68	18.85	18.85
I <sub>c</sub>	26.81	23.31	23.31	12.28	10.68	10.68	13.57	11.79	11.79
I <sub>d</sub>	21.34	18.56	18.56	9.77	8.50	8.50	10.80	9.39	9.39
I <sub>e</sub>	17.41	15.14	15.14	7.97	6.93	6.93	8.81	7.66	7.66
I <sub>f</sub>	16.97	14.76	14.76	7.77	6.76	6.76	8.59	7.47	7.47
I <sub>g</sub>	14.57	12.67	12.67	6.67	5.80	5.80	7.37	6.41	6.41
I <sub>h</sub>	14.78	12.85	12.85	6.77	5.89	5.89	7.48	6.50	6.50
I <sub>i</sub>	13.18	11.46	11.46	6.04	5.25	5.25	6.67	5.80	5.80
<b>Southern zone</b>									
I <sub>a</sub>	37.44	32.56	32.56	17.15	14.91	14.91	18.94	16.48	16.48
I <sub>b</sub>	36.96	32.14	32.14	16.93	14.72	14.72	18.70	16.26	16.26
I <sub>c</sub>	32.77	28.49	28.49	15.01	13.05	13.05	16.58	14.42	14.42
I <sub>d</sub>	20.86	18.14	18.14	9.55	8.31	8.31	10.56	9.18	9.18
I <sub>e</sub>	17.49	15.21	15.21	8.01	6.97	6.97	8.85	7.70	7.70
I <sub>f</sub>	16.94	14.73	14.73	7.76	6.75	6.75	8.57	7.45	7.45
I <sub>g</sub>	14.91	12.97	12.97	6.83	5.94	5.94	7.54	6.56	6.56
I <sub>h</sub>	15.34	13.34	13.34	7.03	6.11	6.11	7.76	6.75	6.75
I <sub>i</sub>	14.10	12.26	12.26	6.46	5.62	5.62	7.13	6.20	6.20

# Electricity prices for industry



1 January 1998

	National currency (/ kWh)			KKS (/ 100 kWh)			ECUS (/ 100 kWh)		
	With taxes	VAT excl.	Taxes excl.	With taxes	VAT excl.	Taxes excl.	With taxes	VAT excl.	Taxes excl.
<b>GERMANY</b>									
<b>Erfurt</b>	<b>1 / 100 DEM</b>								
<sub>a</sub>	43.30	37.65	37.65	19.83	17.24	17.24	21.91	19.05	19.05
<sub>b</sub>	43.19	37.56	37.56	19.78	17.20	17.20	21.85	19.01	19.01
<sub>c</sub>	33.89	29.47	29.47	15.52	13.50	13.50	17.15	14.91	14.91
<sub>d</sub>	23.48	20.42	20.42	10.75	9.35	9.35	11.88	10.33	10.33
<sub>e</sub>	19.27	16.76	16.76	8.83	7.68	7.68	9.75	8.48	8.48
<sub>f</sub>	19.22	16.71	16.71	8.80	7.65	7.65	9.73	8.46	8.46
<sub>g</sub>	16.56	14.40	14.40	7.58	6.60	6.60	8.38	7.29	7.29
<sub>h</sub>	16.45	14.30	14.30	7.53	6.55	6.55	8.32	7.24	7.24
<sub>i</sub>	14.27	12.41	12.41	6.54	5.68	5.68	7.22	6.28	6.28
<b>Leipzig</b>									
<sub>a</sub>	33.80	29.39	29.39	15.48	13.46	13.46	17.10	14.87	14.87
<sub>b</sub>	33.16	28.84	28.84	15.19	13.21	13.21	16.78	14.59	14.59
<sub>c</sub>	29.74	25.86	25.86	13.62	11.84	11.84	15.05	13.09	13.09
<sub>d</sub>	23.87	20.76	20.76	10.93	9.51	9.51	12.08	10.50	10.50
<sub>e</sub>	18.81	16.36	16.36	8.61	7.49	7.49	9.52	8.28	8.28
<sub>f</sub>	18.64	16.21	16.21	8.54	7.42	7.42	9.43	8.20	8.20
<sub>g</sub>	14.61	12.70	12.70	6.69	5.82	5.82	7.39	6.43	6.43
<sub>h</sub>	16.49	14.34	14.34	7.55	6.57	6.57	8.34	7.26	7.26
<sub>i</sub>	13.20	11.48	11.48	6.05	5.26	5.26	6.68	5.81	5.81
<b>Rostock</b>									
<sub>a</sub>	43.30	37.65	37.65	19.83	17.24	17.24	21.91	19.05	19.05
<sub>b</sub>	43.19	37.56	37.56	19.78	17.20	17.20	21.85	19.01	19.01
<sub>c</sub>	33.89	29.47	29.47	15.52	13.50	13.50	17.15	14.91	14.91
<sub>d</sub>	23.48	20.42	20.42	10.75	9.35	9.35	11.88	10.33	10.33
<sub>e</sub>	19.27	16.76	16.76	8.83	7.68	7.68	9.75	8.48	8.48
<sub>f</sub>	19.22	16.71	16.71	8.80	7.65	7.65	9.73	8.46	8.46
<sub>g</sub>	16.56	14.40	14.40	7.58	6.60	6.60	8.38	7.29	7.29
<sub>h</sub>	16.45	14.30	14.30	7.53	6.55	6.55	8.32	7.24	7.24
<sub>i</sub>	14.27	12.41	12.41	6.54	5.68	5.68	7.22	6.28	6.28
<b>GREECE</b>									
<b>Athens</b>	<b>GDR</b>								
<sub>a</sub>	31.94	27.07	27.07	12.17	10.31	10.31	10.22	8.66	8.66
<sub>b</sub>	31.82	26.97	26.97	12.12	10.28	10.28	10.18	8.63	8.63
<sub>c</sub>	29.37	24.89	24.89	11.19	9.48	9.48	9.40	7.96	7.96
<sub>d</sub>	23.40	19.83	19.83	8.92	7.56	7.56	7.49	6.35	6.35
<sub>e</sub>	21.65	18.35	18.35	8.25	6.99	6.99	6.93	5.87	5.87
<sub>f</sub>	21.65	18.35	18.35	8.25	6.99	6.99	6.93	5.87	5.87
<sub>g</sub>	18.21	15.43	15.43	6.94	5.88	5.88	5.83	4.94	4.94
<sub>h</sub>	17.03	14.43	14.43	6.49	5.50	5.50	5.45	4.62	4.62
<sub>i</sub>	14.93	12.65	12.65	5.69	4.82	4.82	4.78	4.05	4.05
<b>SPAIN</b>									
<b>Madrid</b>	<b>ESP</b>								
<sub>a</sub>	20.44	17.62	16.76	14.76	12.72	12.10	12.20	10.52	10.01
<sub>b</sub>	20.44	17.62	16.76	14.76	12.72	12.10	12.20	10.52	10.01
<sub>c</sub>	15.17	13.08	12.44	10.95	9.44	8.98	9.06	7.81	7.43
<sub>d</sub>	13.94	12.02	11.44	10.06	8.68	8.26	8.32	7.18	6.83
<sub>e</sub>	12.65	10.91	10.38	9.13	7.88	7.49	7.55	6.51	6.20
<sub>f</sub>	11.85	10.22	9.72	8.56	7.38	7.02	7.07	6.10	5.80
<sub>g</sub>	10.66	9.19	8.74	7.70	6.64	6.31	6.36	5.49	5.22
<sub>h</sub>	10.68	9.21	8.76	7.71	6.65	6.32	6.38	5.50	5.23
<sub>i</sub>	9.85	8.49	8.08	7.11	6.13	5.83	5.88	5.07	4.82

# Electricity prices for industry



1 January 1998

	National currency (/ kWh)			PPS (/ 100 kWh)			ECUS (/ 100 kWh)		
	With taxes	VAT excl.	Taxes excl.	With taxes	VAT excl.	Taxes excl.	With taxes	VAT excl.	Taxes excl.
<b>FRANCE</b>									
Paris	<i>1 / 100 FRF</i>								
l <sub>a</sub>	80.79	66.99	60.59	11.63	9.65	8.72	12.20	10.12	9.15
l <sub>b</sub>	75.96	62.99	60.59	10.94	9.07	8.72	11.47	9.51	9.15
l <sub>c</sub>	69.96	58.01	55.80	10.07	8.35	8.04	10.56	8.76	8.43
l <sub>d</sub>	55.85	46.31	46.31	8.04	6.67	6.67	8.43	6.99	6.99
l <sub>e</sub>	47.58	39.45	39.45	6.85	5.68	5.68	7.18	5.96	5.96
l <sub>f</sub>	47.58	39.45	39.45	6.85	5.68	5.68	7.18	5.96	5.96
l <sub>g</sub>	41.11	34.09	34.09	5.92	4.91	4.91	6.21	5.15	5.15
l <sub>h</sub>	37.71	31.27	31.27	5.43	4.50	4.50	5.69	4.72	4.72
l <sub>i</sub>	33.90	28.11	28.11	4.88	4.05	4.05	5.12	4.24	4.24
Lille									
l <sub>a</sub>	80.09	66.41	60.59	11.53	9.56	8.72	12.09	10.03	9.15
l <sub>b</sub>	75.70	62.77	60.59	10.90	9.04	8.72	11.43	9.48	9.15
l <sub>c</sub>	69.72	57.81	55.80	10.04	8.32	8.04	10.53	8.73	8.43
l <sub>d</sub>	55.85	46.31	46.31	8.04	6.67	6.67	8.43	6.99	6.99
l <sub>e</sub>	47.58	39.45	39.45	6.85	5.68	5.68	7.18	5.96	5.96
l <sub>f</sub>	47.58	39.45	39.45	6.85	5.68	5.68	7.18	5.96	5.96
l <sub>g</sub>	41.11	34.09	34.09	5.92	4.91	4.91	6.21	5.15	5.15
l <sub>h</sub>	37.71	31.27	31.27	5.43	4.50	4.50	5.69	4.72	4.72
l <sub>i</sub>	33.90	28.11	28.11	4.88	4.05	4.05	5.12	4.24	4.24
Strasbourg									
l <sub>a</sub>	75.41	62.53	60.59	10.86	9.00	8.72	11.39	9.44	9.15
l <sub>b</sub>	73.95	61.32	60.59	10.65	8.83	8.72	11.17	9.26	9.15
l <sub>c</sub>	68.10	56.47	55.80	9.81	8.13	8.04	10.28	8.53	8.43
l <sub>d</sub>	55.85	46.31	46.31	8.04	6.67	6.67	8.43	6.99	6.99
l <sub>e</sub>	47.58	39.45	39.45	6.85	5.68	5.68	7.18	5.96	5.96
l <sub>f</sub>	47.58	39.45	39.45	6.85	5.68	5.68	7.18	5.96	5.96
l <sub>g</sub>	41.11	34.09	34.09	5.92	4.91	4.91	6.21	5.15	5.15
l <sub>h</sub>	37.71	31.27	31.27	5.43	4.50	4.50	5.69	4.72	4.72
l <sub>i</sub>	33.90	28.11	28.11	4.88	4.05	4.05	5.12	4.24	4.24
Lyons <sup>1</sup>									
l <sub>a</sub>	80.09	66.41	60.59	11.53	9.56	8.72	12.09	10.03	9.15
l <sub>b</sub>	75.70	62.77	60.59	10.90	9.04	8.72	11.43	9.48	9.15
l <sub>c</sub>	69.72	57.81	55.80	10.04	8.32	8.04	10.53	8.73	8.43
l <sub>d</sub>	55.85	46.31	46.31	8.04	6.67	6.67	8.43	6.99	6.99
l <sub>e</sub>	47.58	39.45	39.45	6.85	5.68	5.68	7.18	5.96	5.96
l <sub>f</sub>	47.58	39.45	39.45	6.85	5.68	5.68	7.18	5.96	5.96
l <sub>g</sub>	41.11	34.09	34.09	5.92	4.91	4.91	6.21	5.15	5.15
l <sub>h</sub>	37.71	31.27	31.27	5.43	4.50	4.50	5.69	4.72	4.72
l <sub>i</sub>	33.90	28.11	28.11	4.88	4.05	4.05	5.12	4.24	4.24
<b>IRELAND</b>									
Dublin	<i>1 / 100 IEP</i>								
l <sub>a</sub>	11.318	10.060	10.060	16.65	14.80	14.80	14.39	12.79	12.79
l <sub>b</sub>	11.185	9.942	9.942	16.45	14.62	14.62	14.22	12.64	12.64
l <sub>c</sub>	9.640	8.569	8.569	14.18	12.60	12.60	12.25	10.89	10.89
l <sub>d</sub>	7.142	6.348	6.348	10.51	9.34	9.34	9.08	8.07	8.07
l <sub>e</sub>	5.861	5.210	5.210	8.62	7.66	7.66	7.45	6.62	6.62
l <sub>f</sub>	5.472	4.864	4.864	8.05	7.15	7.15	6.95	6.18	6.18
l <sub>g</sub>	4.699	4.177	4.177	6.91	6.14	6.14	5.97	5.31	5.31
l <sub>h</sub>	4.730	4.204	4.204	6.96	6.18	6.18	6.01	5.34	5.34
l <sub>i</sub>	4.293	3.816	3.816	6.32	5.61	5.61	5.46	4.85	4.85

<sup>1</sup> Prices also valid for : Marseilles, Toulouse

# Electricity prices for industry



1 January 1998

	National currency (/ kWh)			PPS (/ 100 kWh)			ECUS (/ 100 kWh)		
	With taxes	VAT excl.	Taxes excl.	With taxes	VAT excl.	Taxes excl.	With taxes	VAT excl.	Taxes excl.
<b>ITALY</b>									
<b>National</b>									
	<b>ITL</b>								
l <sub>a</sub>	378.84	344.40	292.70	21.59	19.63	16.68	19.32	17.56	14.93
l <sub>b</sub>	307.34	279.40	233.30	17.52	15.93	13.30	15.67	14.25	11.90
l <sub>c</sub>	254.68	231.53	185.43	14.52	13.20	10.57	12.99	11.81	9.46
l <sub>d</sub>	235.42	214.02	167.92	13.42	12.20	9.57	12.01	10.92	8.56
l <sub>e</sub>	204.94	186.31	140.21	11.68	10.62	7.99	10.45	9.50	7.15
l <sub>f</sub>	188.52	171.38	140.21	10.75	9.77	7.99	9.61	8.74	7.15
l <sub>g</sub>	152.50	138.65	116.73	8.69	7.90	6.65	7.78	7.07	5.95
l <sub>h</sub>	141.38	128.53	109.84	8.06	7.33	6.26	7.21	6.56	5.60
l <sub>i</sub>	123.94	112.67	94.24	7.06	6.42	5.37	6.32	5.75	4.81
<b>LUXEMBOURG</b>									
<b>National 50% <sup>1 2</sup></b>									
	<b>LUF</b>								
l <sub>a</sub>	5.82	5.49	5.49	13.54	12.78	12.78	14.26	13.46	13.46
l <sub>b</sub>	5.89	5.56	5.56	13.72	12.95	12.95	14.45	13.64	13.64
l <sub>c</sub>	4.53	4.28	4.28	10.56	9.96	9.96	11.12	10.49	10.49
l <sub>d</sub>	3.69	3.49	3.49	8.60	8.12	8.12	9.06	8.55	8.55
l <sub>e</sub>	3.13	2.96	2.96	7.30	6.88	6.88	7.69	7.25	7.25
l <sub>f</sub>	2.44	2.30	2.30	5.67	5.35	5.35	5.97	5.63	5.63
l <sub>g</sub>	2.01	1.89	1.89	4.67	4.40	4.40	4.92	4.64	4.64
l <sub>h</sub>	2.08	1.96	1.96	4.84	4.56	4.56	5.10	4.81	4.81
l <sub>i</sub>	1.84	1.73	1.73	4.27	4.03	4.03	4.50	4.25	4.25
<b>National 0% <sup>1</sup></b>									
l <sub>a</sub>	7.32	6.90	6.90	17.04	16.07	16.07	17.94	16.93	16.93
l <sub>b</sub>	7.27	6.86	6.86	16.92	15.97	15.97	17.82	16.82	16.82
l <sub>c</sub>	4.53	4.28	4.28	10.56	9.96	9.96	11.12	10.49	10.49
l <sub>d</sub>	4.25	4.01	4.01	9.90	9.34	9.34	10.43	9.84	9.84
l <sub>e</sub>	3.48	3.28	3.28	8.11	7.65	7.65	8.54	8.06	8.06
l <sub>f</sub>	2.44	2.30	2.30	5.67	5.35	5.35	5.97	5.63	5.63
l <sub>g</sub>	2.01	1.89	1.89	4.67	4.40	4.40	4.92	4.64	4.64
l <sub>h</sub>	2.08	1.96	1.96	4.84	4.56	4.56	5.10	4.81	4.81
l <sub>i</sub>	1.84	1.73	1.73	4.27	4.03	4.03	4.50	4.25	4.25
<b>National 100% <sup>1</sup></b>									
l <sub>a</sub>	4.55	4.29	4.29	10.60	10.00	10.00	11.17	10.53	10.53
l <sub>b</sub>	4.47	4.22	4.22	10.41	9.82	9.82	10.97	10.35	10.35
l <sub>c</sub>	3.66	3.45	3.45	8.53	8.04	8.04	8.98	8.47	8.47
l <sub>d</sub>	3.14	2.96	2.96	7.31	6.89	6.89	7.70	7.26	7.26
l <sub>e</sub>	2.78	2.63	2.63	6.48	6.12	6.12	6.83	6.44	6.44
l <sub>f</sub>	2.44	2.30	2.30	5.67	5.35	5.35	5.97	5.63	5.63
l <sub>g</sub>	2.01	1.89	1.89	4.67	4.40	4.40	4.92	4.64	4.64
l <sub>h</sub>	2.08	1.96	1.96	4.84	4.56	4.56	5.10	4.81	4.81
l <sub>i</sub>	1.84	1.73	1.73	4.27	4.03	4.03	4.50	4.25	4.25
<b>NETHERLANDS</b>									
<b>Rotterdam</b>									
	<b>1 / 100 NLG</b>								
l <sub>a</sub>	29.60	25.19	22.32	13.20	11.23	9.95	13.29	11.31	10.02
l <sub>b</sub>	29.69	25.27	22.37	13.24	11.27	9.98	13.33	11.35	10.04
l <sub>c</sub>	29.08	24.75	23.84	12.97	11.04	10.63	13.06	11.11	10.70
l <sub>d</sub>	19.74	16.80	16.68	8.80	7.49	7.44	8.86	7.54	7.49
l <sub>e</sub>	16.07	13.68	13.61	7.17	6.10	6.07	7.22	6.14	6.11
l <sub>f</sub>	15.55	13.23	13.22	6.94	5.90	5.90	6.98	5.94	5.94
l <sub>g</sub>	12.73	10.83	10.82	5.68	4.83	4.83	5.72	4.86	4.86
l <sub>h</sub>	13.58	11.56	11.56	6.06	5.16	5.16	6.10	5.19	5.19
l <sub>i</sub>	11.99	10.20	10.20	5.35	4.55	4.55	5.38	4.58	4.58

<sup>1</sup> Power reduction

<sup>2</sup> Taken for community comparison

# Electricity prices for industry



1 January 1998

	National currency (/ kWh)			PPS (/ 100 kWh)			ECUS (/ 100 kWh)		
	With taxes	VAT excl.	Taxes excl.	With taxes	VAT excl.	Taxes excl.	With taxes	VAT excl.	Taxes excl.
<b>NETHERLANDS</b>									
North Holland	<i>1 / 100 NLG</i>								
<sub>a</sub>	26.91	22.90	20.03	12.00	10.21	8.93	12.08	10.28	8.99
<sub>b</sub>	27.03	23.00	20.10	12.06	10.26	8.96	12.14	10.33	9.02
<sub>c</sub>	25.57	21.76	20.85	11.40	9.70	9.30	11.48	9.77	9.36
<sub>d</sub>	17.58	14.96	14.84	7.84	6.67	6.62	7.89	6.72	6.66
<sub>e</sub>	14.69	12.50	12.43	6.55	5.58	5.54	6.60	5.61	5.58
<sub>f</sub>	14.31	12.18	12.17	6.38	5.43	5.43	6.43	5.47	5.46
<sub>g</sub>	12.18	10.37	10.36	5.43	4.63	4.62	5.47	4.66	4.65
<sub>h</sub>	12.87	10.95	10.95	5.74	4.88	4.88	5.78	4.92	4.92
<sub>i</sub>	11.37	9.68	9.68	5.07	4.32	4.32	5.11	4.35	4.35
North Brabant									
<sub>a</sub>	24.60	20.94	18.07	10.97	9.34	8.06	11.05	9.40	8.11
<sub>b</sub>	25.20	21.45	18.55	11.24	9.57	8.27	11.31	9.63	8.33
<sub>c</sub>	22.01	18.73	17.82	9.82	8.35	7.95	9.88	8.41	8.00
<sub>d</sub>	16.50	14.04	13.92	7.36	6.26	6.21	7.41	6.30	6.25
<sub>e</sub>	13.89	11.82	11.75	6.19	5.27	5.24	6.24	5.31	5.28
<sub>f</sub>	13.77	11.72	11.71	6.14	5.23	5.22	6.18	5.26	5.26
<sub>g</sub>	12.29	10.46	10.45	5.48	4.67	4.66	5.52	4.70	4.69
<sub>h</sub>	12.71	10.82	10.82	5.67	4.83	4.83	5.71	4.86	4.86
<sub>i</sub>	11.80	10.04	10.04	5.26	4.48	4.48	5.30	4.51	4.51
<b>AUSTRIA</b>									
Oberösterreich/Tyrol/Wienna	<i>ATS</i>								
<sub>a</sub>	2.58	2.15	2.05	17.54	14.62	13.94	18.57	15.48	14.76
<sub>b</sub>	2.80	2.33	2.23	19.02	15.85	15.17	20.14	16.78	16.06
<sub>c</sub>	2.05	1.70	1.60	13.89	11.57	10.89	14.71	12.26	11.54
<sub>d</sub>	1.69	1.40	1.30	11.44	9.54	8.86	12.12	10.10	9.38
<sub>e</sub>	1.38	1.15	1.05	9.39	7.82	7.15	9.94	8.29	7.57
<sub>f</sub>	1.32	1.10	1.00	8.97	7.48	6.80	9.50	7.92	7.20
<sub>g</sub>	1.17	0.97	0.87	7.93	6.61	5.93	8.40	7.00	6.28
<sub>h</sub>	1.15	0.96	0.86	7.82	6.52	5.84	8.29	6.91	6.19
<sub>i</sub>	1.04	0.87	0.77	7.06	5.89	5.21	7.48	6.24	5.52
<b>PORTUGAL</b>									
Lisbon	<i>PTE</i>								
<sub>a</sub>	23.560	22.440	22.420	17.39	16.56	16.55	11.66	11.11	11.10
<sub>b</sub>	24.440	23.280	23.270	18.04	17.18	17.17	12.10	11.52	11.52
<sub>c</sub>	20.030	19.080	19.080	14.78	14.08	14.08	9.91	9.44	9.44
<sub>d</sub>	17.100	16.290	16.290	12.62	12.02	12.02	8.46	8.06	8.06
<sub>e</sub>	15.120	14.400	14.400	11.16	10.63	10.63	7.48	7.13	7.13
<sub>f</sub>	15.120	14.400	14.400	11.16	10.63	10.63	7.48	7.13	7.13
<sub>g</sub>	12.340	11.750	11.750	9.11	8.67	8.67	6.11	5.82	5.82
<sub>h</sub>	11.050	10.530	10.530	8.15	7.77	7.77	5.47	5.21	5.21
<sub>i</sub>	10.150	9.670	9.670	7.49	7.14	7.14	5.02	4.79	4.79
San Miguel Azores									
<sub>a</sub>	34.440	33.120	33.120	25.42	24.44	24.44	17.05	16.39	16.39
<sub>b</sub>	31.560	30.350	30.350	23.29	22.40	22.40	15.62	15.02	15.02
<sub>c</sub>	27.220	26.170	26.170	20.09	19.31	19.31	13.47	12.95	12.95
<sub>d</sub>	24.200	23.270	23.270	17.86	17.17	17.17	11.98	11.52	11.52
<sub>e</sub>	22.160	21.310	21.310	16.35	15.73	15.73	10.97	10.55	10.55
<sub>f</sub>	22.160	21.310	21.310	16.35	15.73	15.73	10.97	10.55	10.55
<sub>g</sub>	:	:	:	:	:	:	:	:	:
<sub>h</sub>	:	:	:	:	:	:	:	:	:
<sub>i</sub>	:	:	:	:	:	:	:	:	:



# Electricity prices for industry



1 January 1998

	National currency (/ kWh)			PPS (/ 100 kWh)			ECUS (/ 100 kWh)		
	With taxes	VAT excl.	Taxes excl.	With taxes	VAT excl.	Taxes excl.	With taxes	VAT excl.	Taxes excl.
<b>FINLAND</b>									
<b>National</b>	<i>1 / 100 FIN</i>								
I <sub>a</sub>	44.70	36.60	34.50	6.79	5.56	5.24	7.46	6.11	5.76
I <sub>b</sub>	44.90	36.80	34.70	6.82	5.59	5.27	7.50	6.15	5.79
I <sub>c</sub>	42.10	34.50	32.40	6.40	5.24	4.92	7.03	5.76	5.41
I <sub>d</sub>	36.80	30.20	28.10	5.59	4.59	4.27	6.15	5.04	4.69
I <sub>e</sub>	31.80	26.10	24.00	4.83	3.97	3.65	5.31	4.36	4.01
I <sub>f</sub>	32.10	26.30	24.20	4.88	4.00	3.68	5.36	4.39	4.04
I <sub>g</sub>	28.50	23.40	21.30	4.33	3.56	3.24	4.76	3.91	3.56
I <sub>h</sub>	26.00	21.30	19.20	3.95	3.24	2.92	4.34	3.56	3.21
I <sub>i</sub>	:	:	:	:	:	:	:	:	:
<b>SWEDEN</b>									
<b>National</b>	<i>1 / 100 SEK</i>								
I <sub>a</sub>	75.63	60.50	60.50	6.96	5.57	5.57	8.70	6.96	6.96
I <sub>b</sub>	74.88	59.90	59.90	6.89	5.51	5.51	8.61	6.89	6.89
I <sub>c</sub>	64.38	51.50	51.50	5.92	4.74	4.74	7.40	5.92	5.92
I <sub>d</sub>	52.88	42.30	42.30	4.86	3.89	3.89	6.08	4.86	4.86
I <sub>e</sub>	42.75	34.20	34.20	3.93	3.15	3.15	4.92	3.93	3.93
I <sub>f</sub>	40.88	32.70	32.70	3.76	3.01	3.01	4.70	3.76	3.76
I <sub>g</sub>	35.75	28.60	28.60	3.29	2.63	2.63	4.11	3.29	3.29
I <sub>h</sub>	35.38	28.30	28.30	3.25	2.60	2.60	4.07	3.25	3.25
I <sub>i</sub>	33.25	26.60	26.60	3.06	2.45	2.45	3.82	3.06	3.06
<b>UNITED KINGDOM</b>									
<b>London</b>	<i>1 / 100 GBP</i>								
I <sub>a</sub>	8.590	7.311	7.311	12.18	10.37	10.37	12.92	11.00	11.00
I <sub>b</sub>	8.127	6.917	6.917	11.52	9.81	9.81	12.22	10.40	10.40
I <sub>c</sub>	6.639	5.650	5.650	9.41	8.01	8.01	9.99	8.50	8.50
I <sub>d</sub>	5.477	4.662	4.662	7.77	6.61	6.61	8.24	7.01	7.01
I <sub>e</sub>	4.913	4.182	4.182	6.97	5.93	5.93	7.39	6.29	6.29
I <sub>f</sub>	4.551	3.873	3.873	6.45	5.49	5.49	6.84	5.82	5.82
I <sub>g</sub>	:	:	:	:	:	:	:	:	:
I <sub>h</sub>	:	:	:	:	:	:	:	:	:
I <sub>i</sub>	:	:	:	:	:	:	:	:	:
<b>Leeds</b>									
I <sub>a</sub>	7.732	6.580	6.580	10.96	9.33	9.33	11.63	9.90	9.90
I <sub>b</sub>	7.779	6.620	6.620	11.03	9.39	9.39	11.70	9.96	9.96
I <sub>c</sub>	7.529	6.408	6.408	10.68	9.09	9.09	11.32	9.64	9.64
I <sub>d</sub>	5.728	4.875	4.875	8.12	6.91	6.91	8.61	7.33	7.33
I <sub>e</sub>	4.684	3.986	3.986	6.64	5.65	5.65	7.04	5.99	5.99
I <sub>f</sub>	:	:	:	:	:	:	:	:	:
I <sub>g</sub>	:	:	:	:	:	:	:	:	:
I <sub>h</sub>	:	:	:	:	:	:	:	:	:
I <sub>i</sub>	:	:	:	:	:	:	:	:	:
<b>Birmingham</b>									
I <sub>a</sub>	8.554	7.280	7.280	12.13	10.32	10.32	12.87	10.95	10.95
I <sub>b</sub>	8.507	7.240	7.240	12.06	10.27	10.27	12.79	10.89	10.89
I <sub>c</sub>	7.370	6.272	6.272	10.45	8.89	8.89	11.08	9.43	9.43
I <sub>d</sub>	5.752	4.895	4.895	8.16	6.94	6.94	8.65	7.36	7.36
I <sub>e</sub>	4.838	4.118	4.118	6.86	5.84	5.84	7.28	6.19	6.19
I <sub>f</sub>	4.488	3.820	3.820	6.36	5.42	5.42	6.75	5.75	5.75
I <sub>g</sub>	:	:	:	:	:	:	:	:	:
I <sub>h</sub>	:	:	:	:	:	:	:	:	:
I <sub>i</sub>	:	:	:	:	:	:	:	:	:

# Electricity prices for industry

1998, 1997, 1996, 1995, 1994, 1993, 1992, 1991, 1990, 1989, 1988, 1987, 1986, 1985, 1984, 1983, 1982, 1981, 1980, 1979, 1978, 1977, 1976, 1975, 1974, 1973, 1972, 1971, 1970, 1969, 1968, 1967, 1966, 1965, 1964, 1963, 1962, 1961, 1960, 1959, 1958, 1957, 1956, 1955, 1954, 1953, 1952, 1951, 1950, 1949, 1948, 1947, 1946, 1945, 1944, 1943, 1942, 1941, 1940, 1939, 1938, 1937, 1936, 1935, 1934, 1933, 1932, 1931, 1930, 1929, 1928, 1927, 1926, 1925, 1924, 1923, 1922, 1921, 1920, 1919, 1918, 1917, 1916, 1915, 1914, 1913, 1912, 1911, 1910, 1909, 1908, 1907, 1906, 1905, 1904, 1903, 1902, 1901, 1900



1 January 1998

	National currency (/ kWh)			PPS (/ 100 kWh)			ECUS (/ 100 kWh)		
	With taxes	VAT excl.	Taxes excl.	With taxes	VAT excl.	Taxes excl.	With taxes	VAT excl.	Taxes excl.
<b>UNITED KINGDOM</b>	<b>1 / 100 GBP</b>								
<b>Glasgow</b>									
a	8.683	7.390	7.390	12.31	10.48	10.48	13.06	11.11	11.11
b	8.401	7.150	7.150	11.91	10.14	10.14	12.64	10.75	10.75
c	:	:	:	:	:	:	:	:	:
d	:	:	:	:	:	:	:	:	:
e	:	:	:	:	:	:	:	:	:
f	:	:	:	:	:	:	:	:	:
g	:	:	:	:	:	:	:	:	:
h	:	:	:	:	:	:	:	:	:
i	:	:	:	:	:	:	:	:	:
<b>NORWAY <sup>1</sup></b>	<b>1 / 100 NOK</b>								
<b>National</b>									
a	46.60	37.90	37.90	4.71	3.83	3.83	5.73	4.66	4.66
b	50.50	41.10	41.10	5.10	4.15	4.15	6.21	5.06	5.06
c	52.40	42.60	42.60	5.29	4.30	4.30	6.45	5.24	5.24
d	45.10	36.60	36.60	4.56	3.70	3.70	5.55	4.50	4.50
e	37.60	30.60	30.60	3.80	3.09	3.09	4.62	3.76	3.76
f	31.70	25.80	25.80	3.20	2.61	2.61	3.90	3.17	3.17
g	25.40	20.70	20.70	2.57	2.09	2.09	3.12	2.55	2.55
h	26.20	21.30	21.30	2.65	2.15	2.15	3.22	2.62	2.62
i	24.10	19.60	19.60	2.43	1.98	1.98	2.96	2.41	2.41

<sup>1</sup> In the framework of the agreements concluded between the member countries of the European Economic Agreement (EEA), prices for Norway are also published

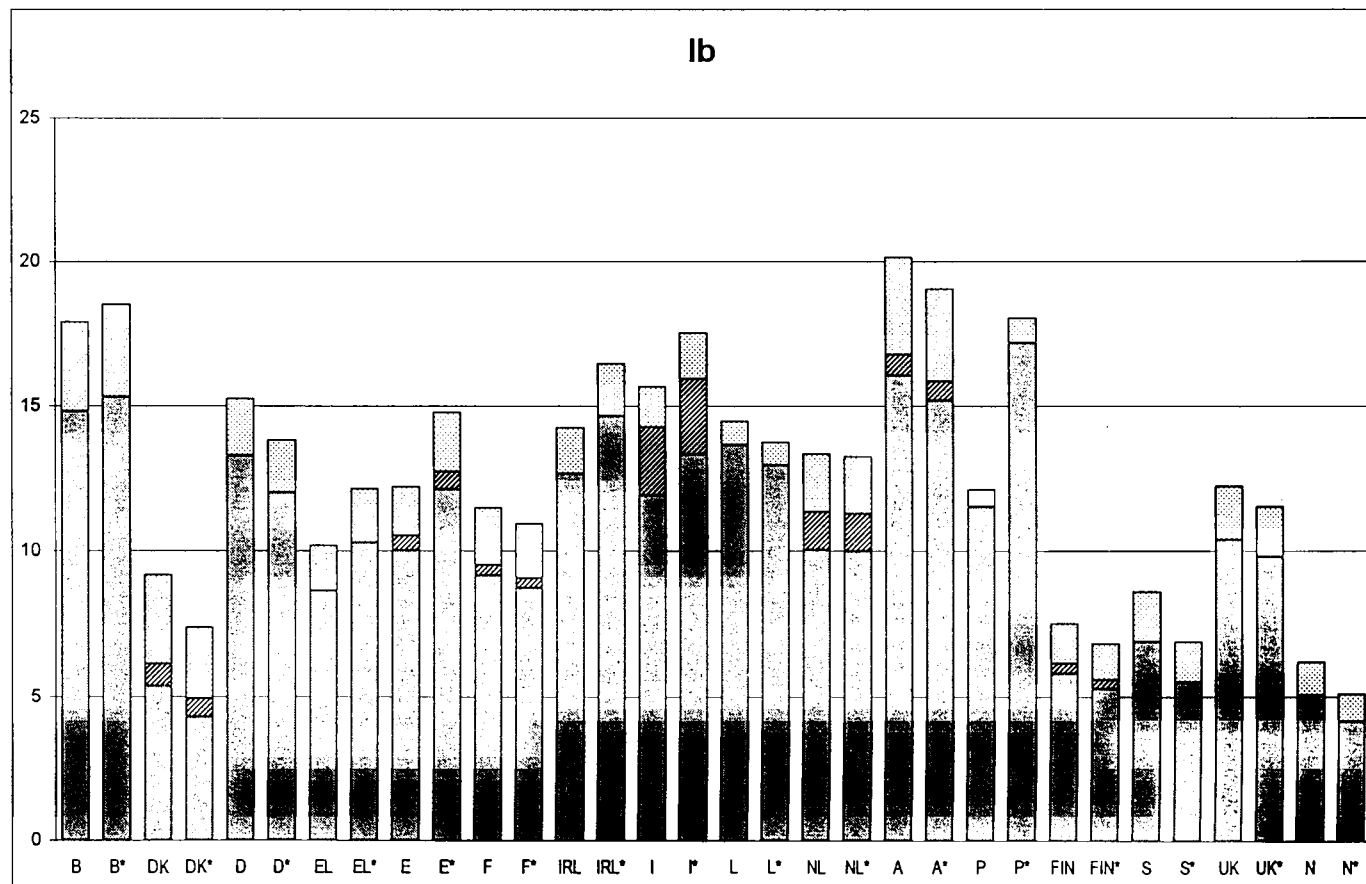
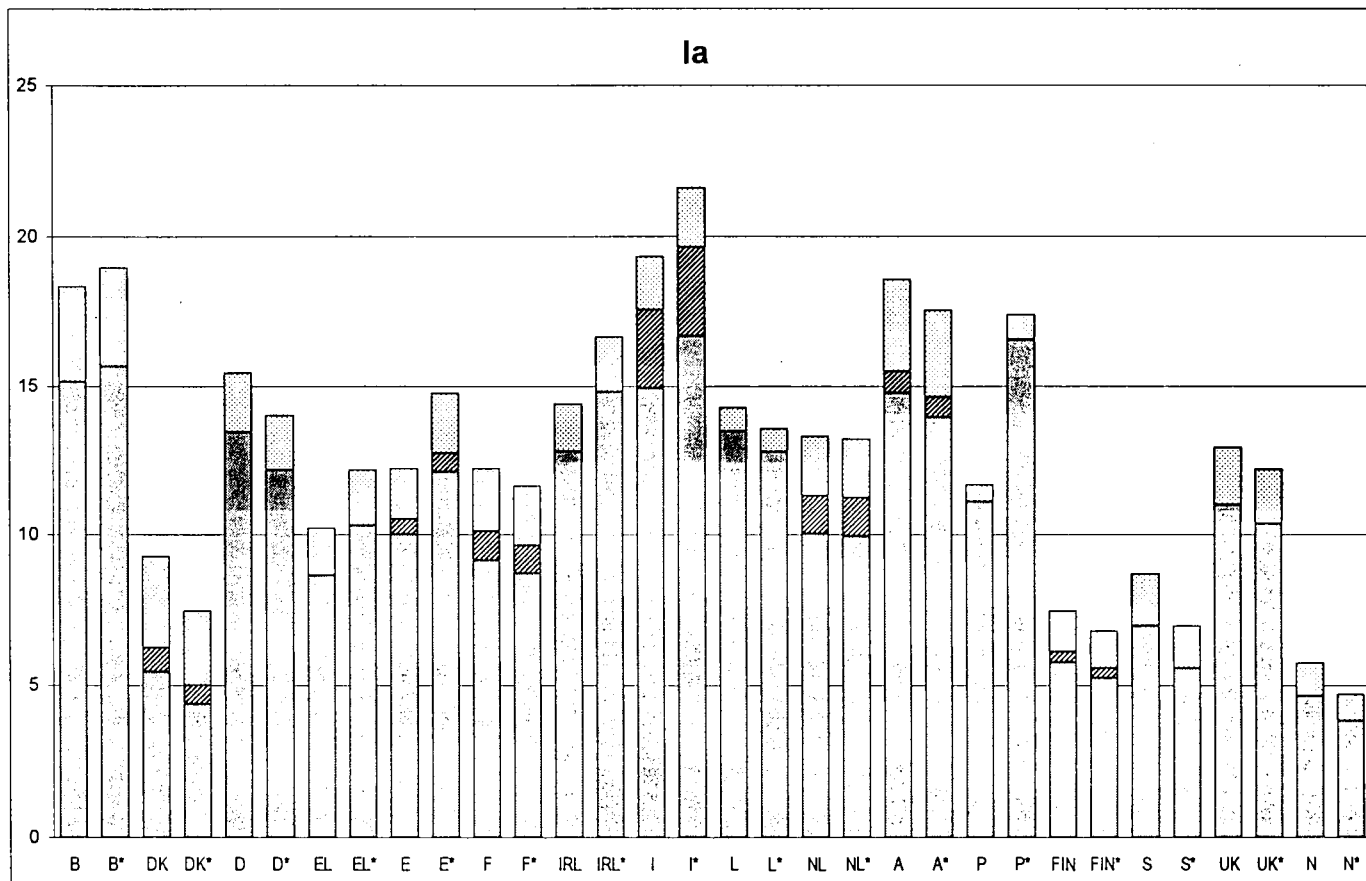
# Electricity prices for industry

ECU / 100 kWh

\* PPS / 100 kWh



1998-1



B BELGIQUE National  
 DK DANMARK National  
 D DUESSELDORF  
 EL ATHINAI

E MADRID  
 F PARIS  
 IRL DUBLIN  
 I ITALIE National

L LUXEMBOURG  
 NL ROTTERDAM  
 A ÖSTERREICH  
 P LISBOA

FIN FINLAND National  
 S SVERIGE  
 UK LONDON  
 N NORGE

VAT   
 Other taxes   
 Taxes excluded

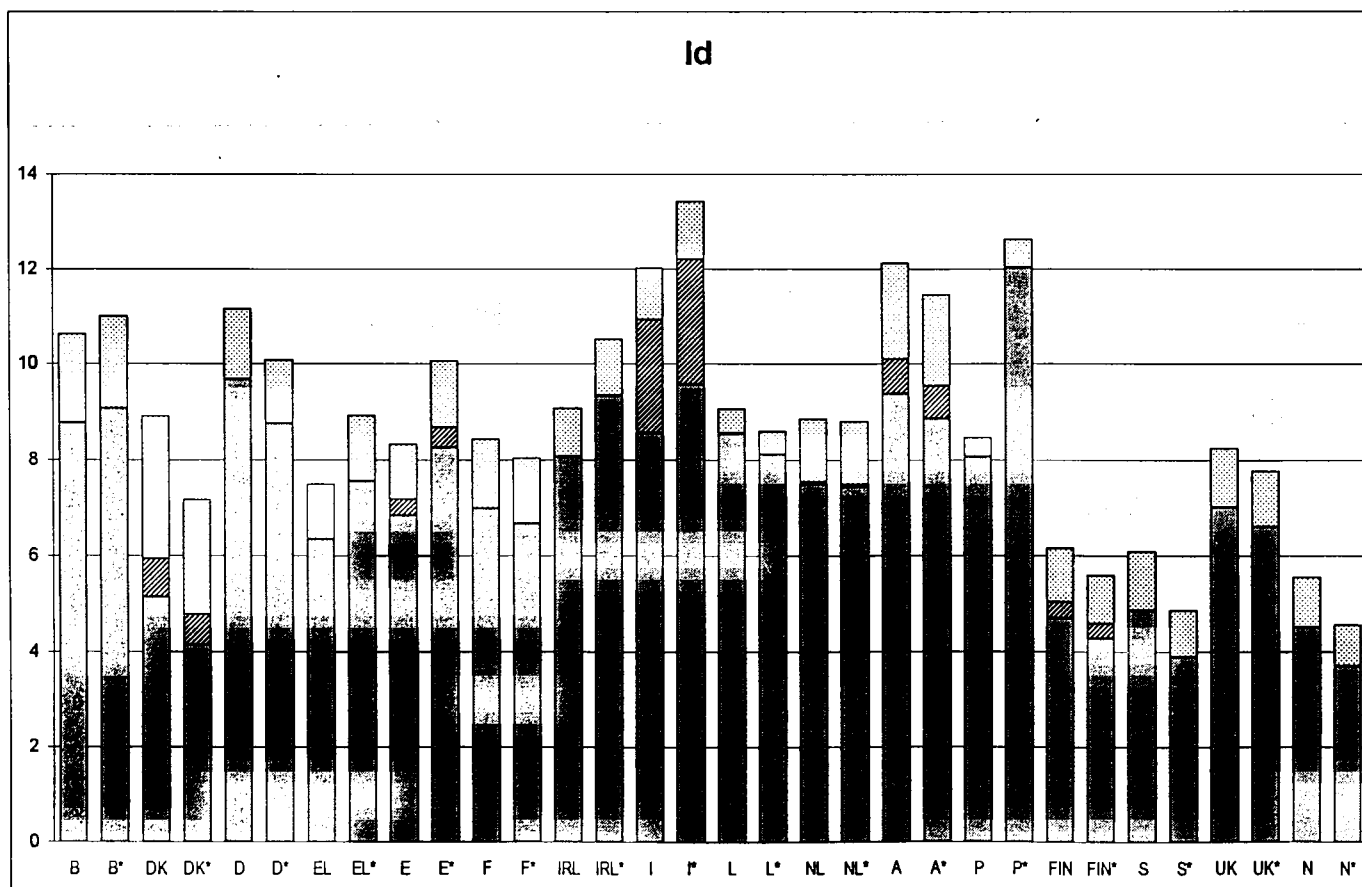
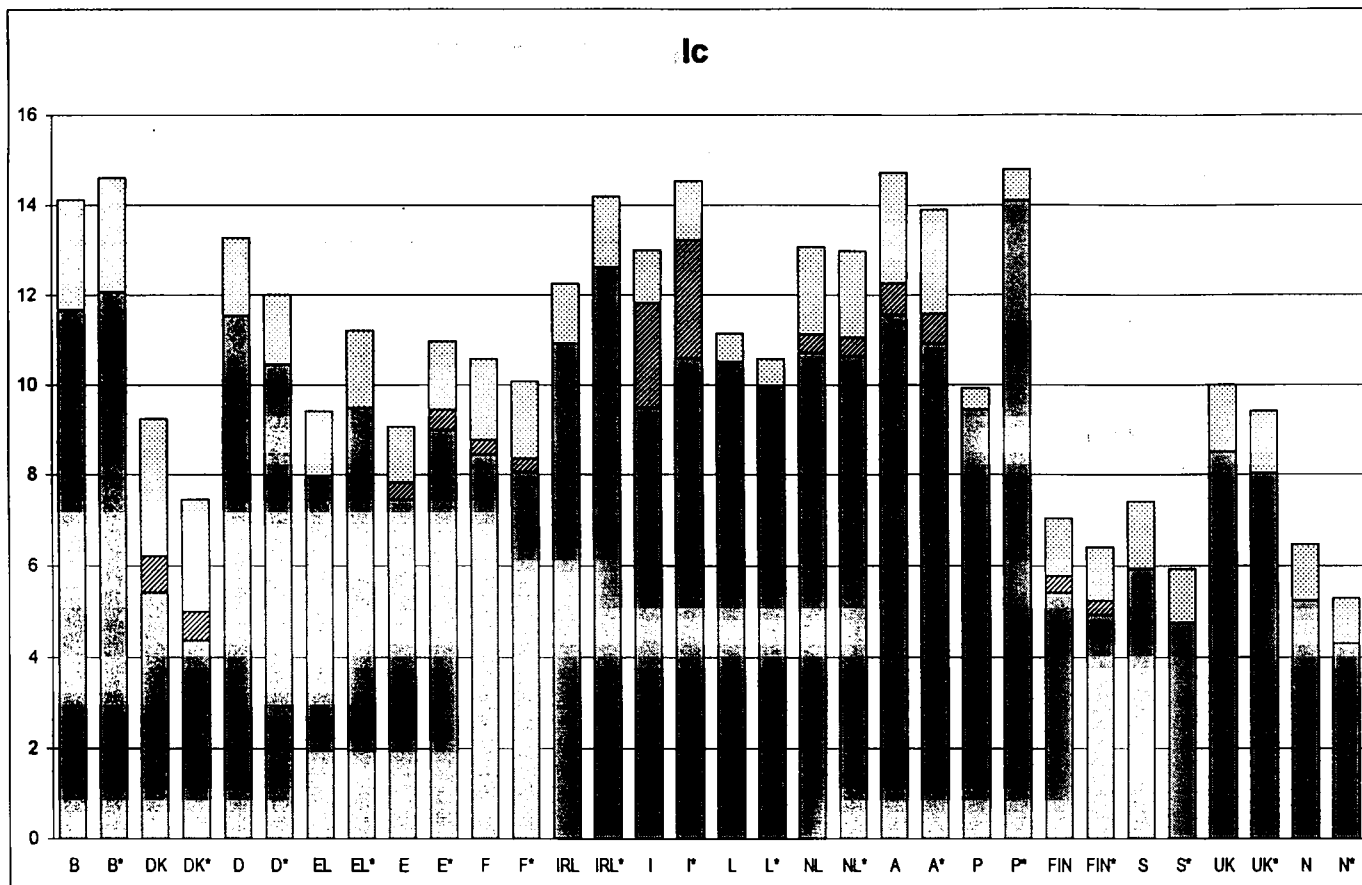
# Electricity prices for industry

ECU / 100 kWh

\* PPS / 100 kWh



1998-1



B BELGIQUE National  
 DK DANMARK National  
 D DUESSELDORF  
 EL ATHINA

E MADRID  
 F PARIS  
 IRL DUBLIN  
 I ITALIE National

L LUXEMBOURG  
 NL ROTTERDAM  
 A ÖSTERREICH  
 P LISBOA

FIN FINLAND National  
 S SVERIGE  
 UK LONDON  
 N NORGE

VAT  
 Other taxes  
 Taxes excluded

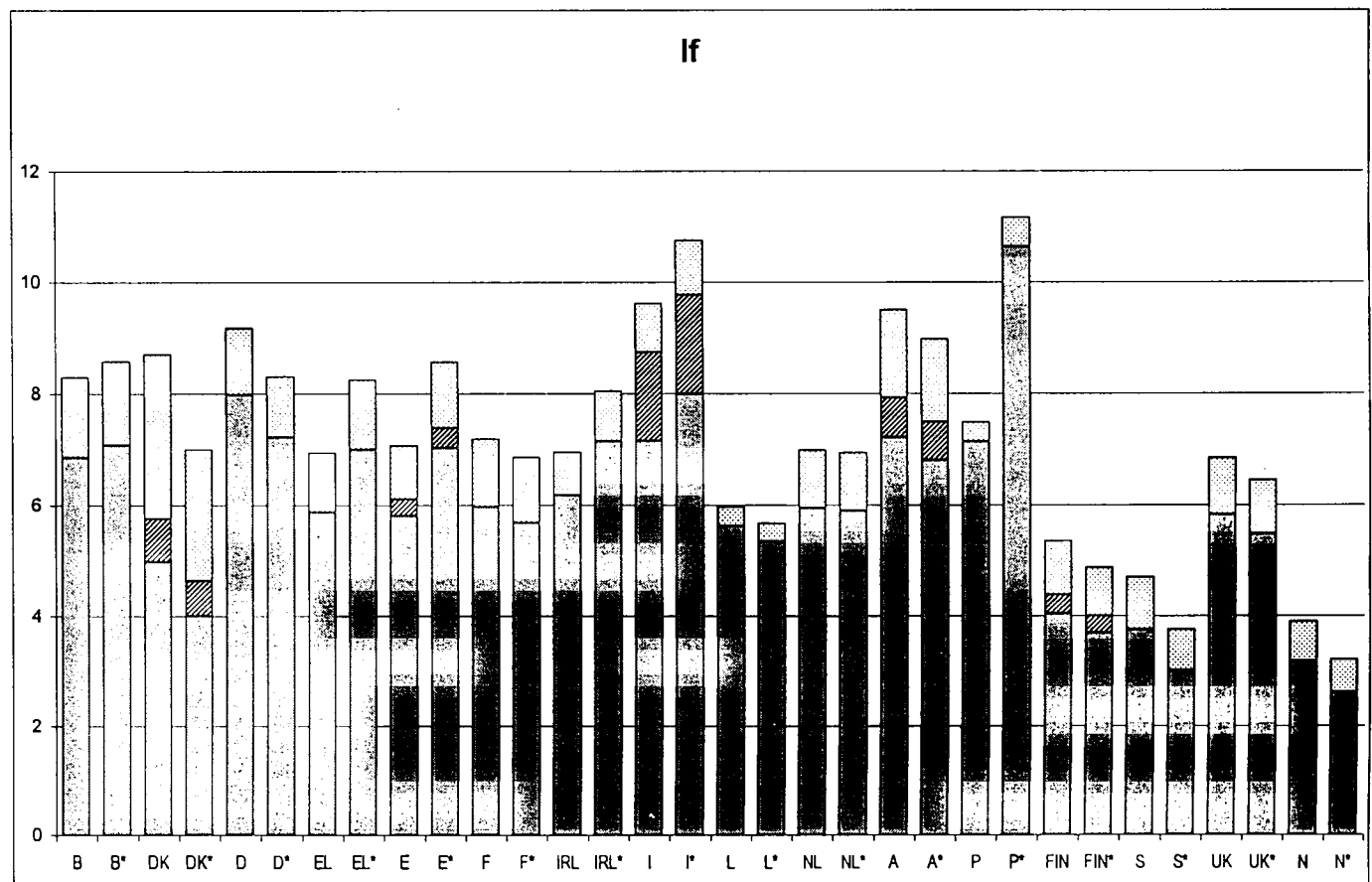
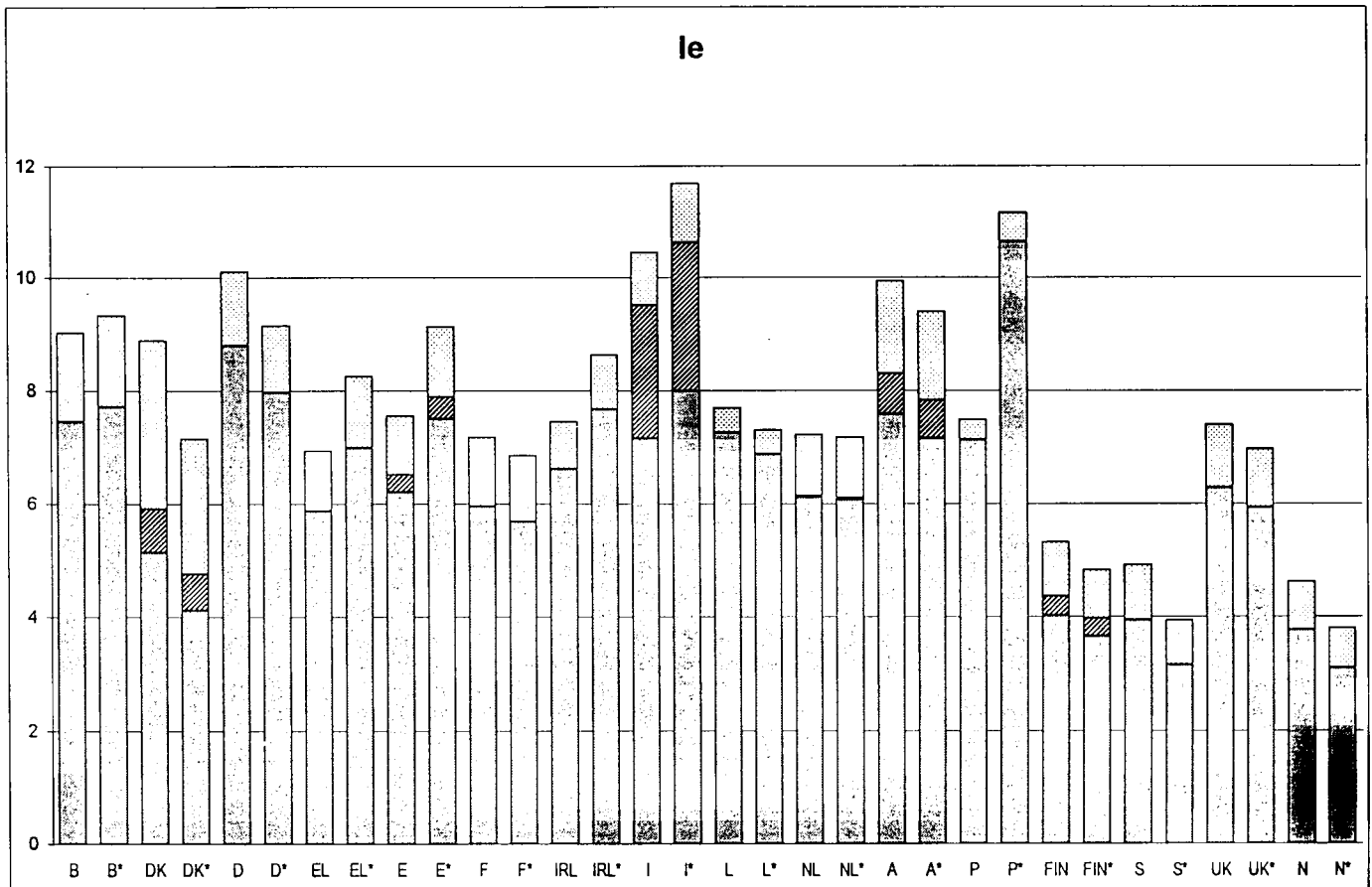
# Electricity prices for industry

ECU / 100 kWh

\* PPS / 100 kWh



1998-1



- |                     |                   |              |                      |
|---------------------|-------------------|--------------|----------------------|
| B BELGIQUE National | E MADRID          | L LUXEMBOURG | FIN FINLAND National |
| DK DANMARK National | F PARIS           | NL ROTTERDAM | S SVERIGE            |
| D DUESSELDORF       | IRL DUBLIN        | A ÖSTERREICH | UK LONDON            |
| EL ATHINA           | I ITALIE National | P LISBOA     | N NORGE              |

VAT

Other taxes

Taxes excluded

# Electricity prices for industry

ECU / 100 kWh

\* PPS / 100 kWh

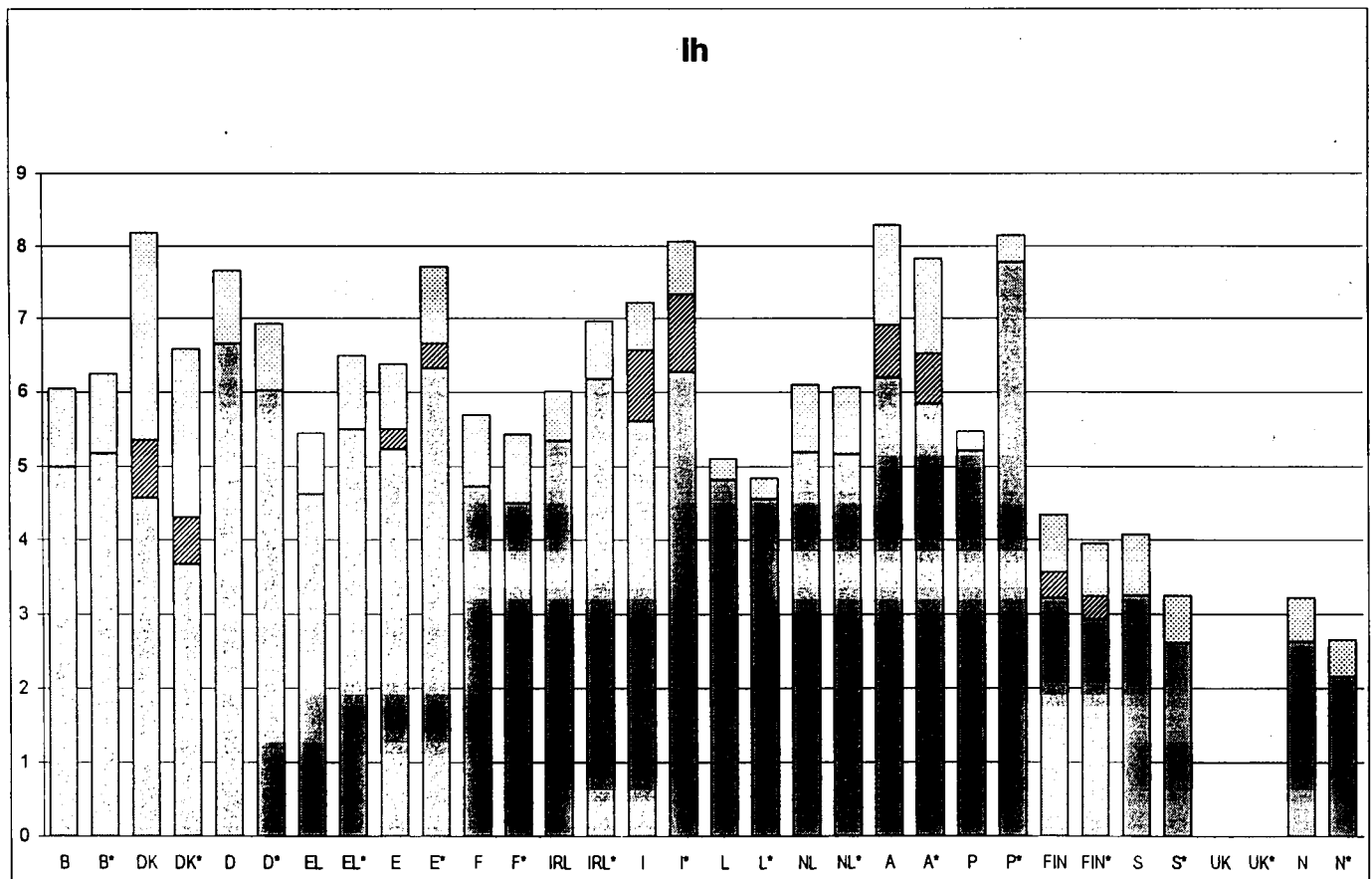
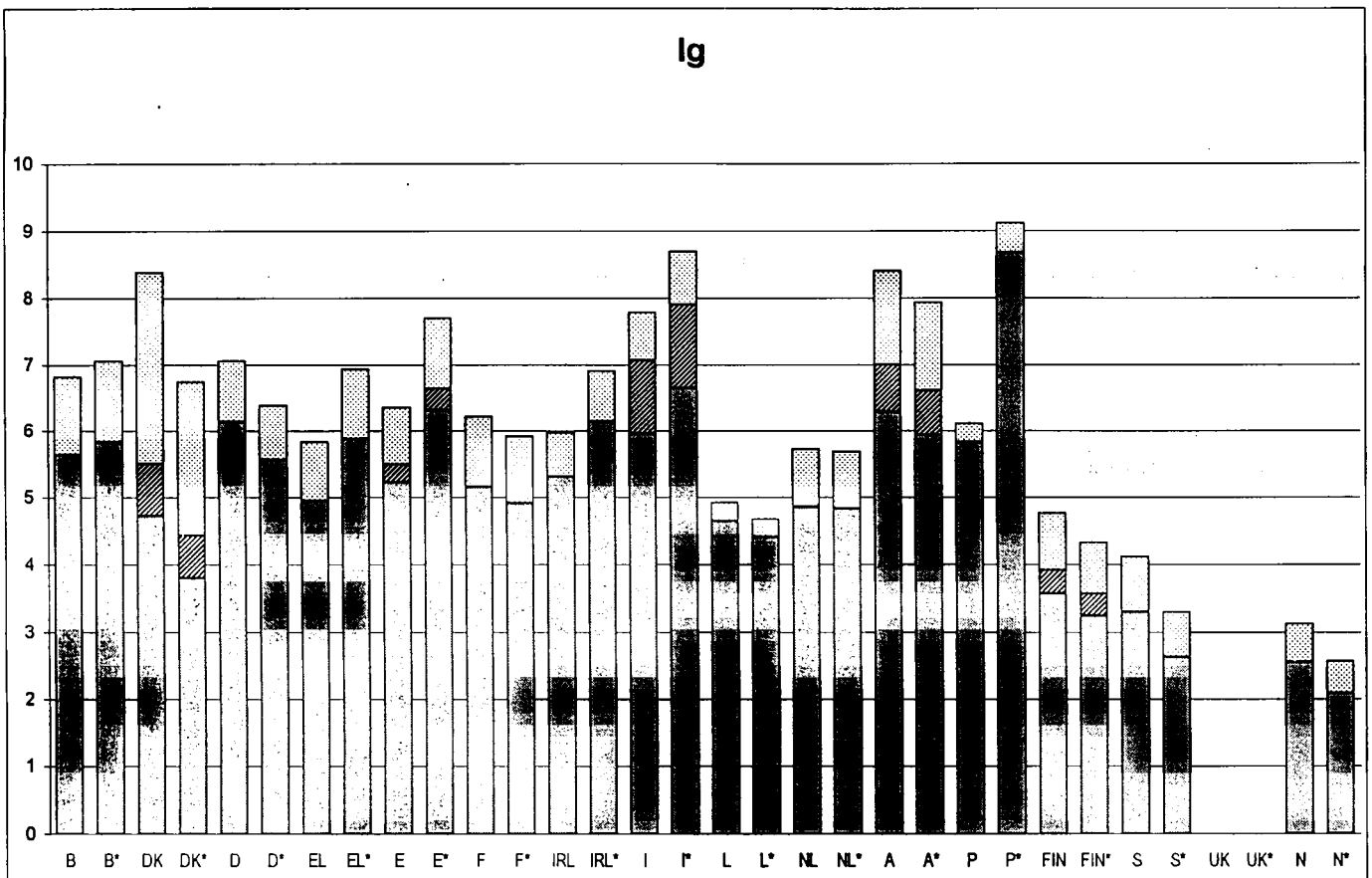
Electricity prices for industry

ECU / 100 kWh

\* PPS / 100 kWh



1998-1



B BELGIQUE National  
 DK DANMARK National  
 D DUESSELDORF  
 EL ATHINA

E MADRID  
 F PARIS  
 IRL DUBLIN  
 I ITALIE National

L LUXEMBOURG  
 NL ROTTERDAM  
 A ÖSTERREICH  
 P LISBOA

FIN FINLAND National  
 S SVERIGE  
 UK LONDON  
 N NORGE

VAT   
 Other taxes   
 Taxes excluded

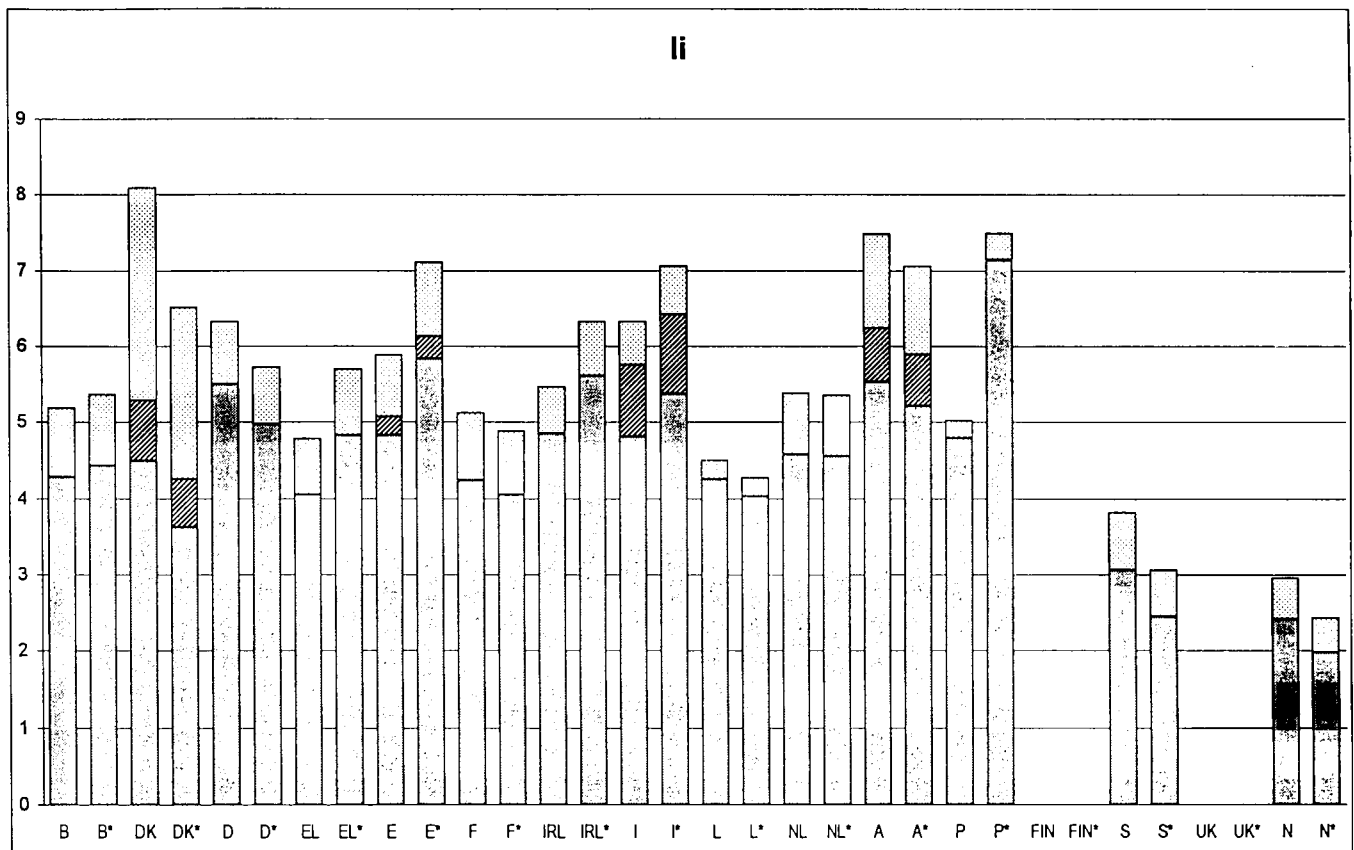
# Electricity prices for industry

ECU / 100 kWh

\* PPS / 100 kWh



1998-1



B BELGIQUE National  
 DK DANMARK National  
 D DUESSELDORF  
 EL ATHINAL

E MADRID  
 F PARIS  
 IRL DUBLIN  
 I ITALIE National


L LUXEMBOURG  
 NL ROTTERDAM  
 A ÖSTERREICH  
 P LISBOA

FIN FINLAND National  
 S SVERIGE  
 UK LONDON  
 N NORGE

VAT  
 Other taxes  
 Taxes excluded

Council Directive No 90/377/EEC of 29 June 1990 lays down a Community procedure to improve the transparency of gas and electricity prices charged to industrial end-users. In accordance with Article 1.1, this note sets out the prices for standard consumers and the "marker prices" in force as at 1 January 1998.

Nine standard industrial users, coded I<sub>a</sub> to I<sub>i</sub> were chosen:

Standard consumer 	Annual consumption (kWh)	Maximum demand (kW)	Annual utilisation (in hours)
I <sub>a</sub>	30 000	30	1 000
I <sub>b</sub>	50 000	50	1 000
I <sub>c</sub>	160 000	100	1 600
I <sub>d</sub>	1 250 000	500	2 500
I <sub>e</sub>	2 000 000	500	4 000
I <sub>f</sub>	10 000 000	2 500	4 000
I <sub>g</sub>	24 000 000	4 000	6 000
I <sub>h</sub>	50 000 000	10 000	5 000
I <sub>i</sub>	70 000 000	10 000	7 000

Prices for the standard consumers are given in national currencies, PPS (estimated purchasing power standard, annual estimated value, as at 5 March for 1998) and in ECU (average value for January 1998).

### Conversion table in PPS and ECU

#### 1 PPS =

<b>B</b> (BEF) 39.41	<b>E</b> (ESP) 138.58	<b>L</b> (LUF) 42.94	<b>FIN</b> (FIM) 6.57
<b>DK</b> (DKK) 9.31	<b>F</b> (FRF) 6.96	<b>NL</b> (NLG) 2.24	<b>S</b> (SEK) 10.88
<b>D</b> (DEM) 2.18	<b>IRL</b> (IEP) 0.68	<b>A</b> (ATS) 14.72	<b>UK</b> (GBP) 0.71
<b>EL</b> (GRD) 262.74	<b>I</b> (ITL) 1751.33	<b>P</b> (PTE) 135.44	<b>NO</b> (NOK) 9.93

#### 1 ECU =

<b>B</b> (BEF) 40.76	<b>E</b> (ESP) 167.47	<b>L</b> (LUF) 40.76	<b>FIN</b> (FIM) 5.98
<b>DK</b> (DKK) 7.53	<b>F</b> (FRF) 6.62	<b>NL</b> (NLG) 2.23	<b>S</b> (SEK) 8.72
<b>D</b> (DEM) 1.98	<b>IRL</b> (IEP) 0.79	<b>A</b> (ATS) 13.90	<b>UK</b> (GBP) 0.67
<b>EL</b> (GRD) 312.33	<b>I</b> (ITL) 1944.67	<b>P</b> (PTE) 202.11	<b>NO</b> (NOK) 8.16

### Eurostat Data Shop

#### BELGIQUE/BELGIË

Eurostat Data Shop  
Bruxelles/Brussel  
Tel. (32-2) 299 66 66  
Fax (32-2) 295 01 25  
E-mail:  
Piera Calcinaghi@eurostat.cec.be

#### DANMARK

Danmarks Statistik  
Bibliotek og Information  
Eurostat Data Shop  
Tel. (45) 39 17 30 30  
Fax (45) 39 17 30 03  
E-mail: bib@dst.dk

#### DEUTSCHLAND

STATISTISCHES BUNDESAMT -  
Berlin  
Information Service  
Eurostat Data Shop  
Tel. (49-30) 23 24 64 27/28  
Fax (49-30) 23 24 64 30

#### ESPAÑA

INE  
Eurostat Data Shop  
Tel. (34-1) 583 91 67  
Fax (34-1) 579 71 20  
E-mail: datashop.eurostat@ine.es

#### FRANCE

INSEE Info Service  
Eurostat Data Shop  
Tel. (33-1) 53 17 88 44  
Fax (33-1) 53 17 88 22  
E-mail:  
datashop@dg75iisa.insee.atlas.fr

#### ITALIA — Milano

ISTAT  
Centro di informazione statistica —  
Sede di Milano  
Eurostat Data Shop  
Tel. (39-2) 65 95 133/134  
Fax (39-2) 65 30 75

#### ITALIA — Roma

ISTAT  
Centro di informazione statistica —  
Sede di Roma  
Eurostat Data Shop  
Tel. (39-6) 46 73 31 05/02  
Fax (39-6) 46 73 31 07/01  
E-mail: dipidiff@istat.it

#### LUXEMBOURG

Eurostat Data Shop Luxembourg  
BP 453 L - 2014 Luxembourg  
Eurostat Data Shop  
4, rue A. Weicker  
L - 2721 Luxembourg  
Tel. (352) 43 35 22 51  
Fax (352) 43 35 22 21  
E-mail: agnes@eurostat.datashop.lu

#### NEDERLAND

STATISTICS NETHERLANDS  
Eurostat Data Shop - Library  
Tel. (31-70) 337 49 00  
Fax (31-70) 337 59 84  
E-mail: datashop@cbs.nl

#### SVERIGE

STATISTICS SWEDEN  
Information service  
Eurostat Data Shop  
Tel. (46-8) 783 48 01  
Fax (46-8) 783 48 99  
E-mail: infoservice@scb.se

#### UNITED KINGDOM

ONS Sales Office  
Eurostat Data Shop  
Office for national statistics  
Tel. (44-171) 533 5676  
Fax (44-171) 533 5689  
E-mail: gloria.ryan@ons.gov.uk

#### USA

Haver analytics  
Eurostat Data Shop  
Tel. (1-212) 986 9300  
Fax (1-212) 986 5857  
E-mail: eurodata@haver.com

Eurostat homepage: <http://europa.eu.int/eurostat.html>

### Sales offices (EUR-OP)

BELGIQUE/BELGIË — DANMARK — DEUTSCHLAND — GREECE/ELLADA — FRANCE — IRELAND —  
ITALIA — GRAND-DUCHÉ DE LUXEMBOURG — NEDERLAND — ÖSTERREICH — PORTUGAL —  
SUOMI /FINLAND — SVERIGE — UNITED KINGDOM — ICELAND — NORWAY — SWITZERLAND —  
ČESKÁ REPUBLIKA — CYPRUS — MAGYARORSZÁG — MALTA — POLSKA — TÜRKIYE — BĂLGĂRIJA —  
HRVATSKA — ROMÂNIA — SLOVAKIA — SLOVENIA — ISRAEL — RUSSIA — AUSTRALIA — CANADA —  
EGYPT — JAPAN — SOUTH AFRICA — UNITED STATES OF AMERICA — MEXICO — KOREAN REPUBLIC

A worldwide list of our sales agents is available from the  
Office for Official Publications of the European Communities  
2 rue Mercier — L-2985 Luxembourg  
Tel. (352) 2929-1 — fax. (352) 2929-42658  
Internet address:  
[http://eur-op.eu.int/\\_en/general-us-ad.htm](http://eur-op.eu.int/_en/general-us-ad.htm)