



STATISTICS IN FOCUS

Energy and industry

1996 12

ISSN 1024-4328

Electricity prices for EU households on 1 January 1996: relative stability

These comments are based on prices collected by Eurostat expressed in national currency. For the comparative tables and the graphics, prices in ECU and purchasing power standards (PPS) have been used.

A study of the variations in VAT-excluded prices from 1 July 1995 to 1 January 1996 reveals that:

- In the Netherlands, the greatest rises were recorded for D_e^* (21.5% in Rotterdam, 25.8% for Nord Holland and 23.5% for Nord Brabant). The increase in these three locations affects all standard consumers (it is over 10% for D_c , D_d and D_e).
- In Denmark, the rise is between 4.5% (D_a) and 8.8% (D_e); In Finland, it is between 5% (D_b) and 6.2% (D_e).
- In Luxembourg (0.9%) and in Belgium (0.3%), the rise was the same for all standard consumers.
- In Italy, prices for D_c (1.3%) and D_d (1.5%) increased, whereas those of D_a and D_b remained stable.
- In Germany, the only recorded rises affected prices for D_a (0.5%), D_b (5.3%) and D_e (3.8%) in Erfurt, D_c (16.2%), D_d (22.7%) and D_e (25.4%) in Leipzig and all standard consumers in Rostock where the rise is between 1.9% (D_e) and 8.1% (D_d). In the other locations, the drop was between -6% and -14% (D_e , Westliches Gebiet).
- In the United Kingdom, the only prices showing a rise were those in Glasgow, between 1% (D_a) and 3.1% (D_c). In the other towns, they remained unchanged.
- In Greece, Spain, France, Ireland and the United Kingdom, prices remained relatively stable.

* see table below for standard consumers definition.

Manuscript completed on = 26.04.1996

For further information please contact:

Eurostat, L-2920 Luxembourg, tel. 4301-32040 Fax: 4301-34771

Price (excl. VAT) in Luxembourg: Subscription ECU 240,
single copy ECU 6

Catalogue number: CA-NL-96-012-EN-C

Five household standard consumers, coded D_a to D_e were chosen:

eurostat Standard consumer	Annual consumption (in kWh)		Approx. subscribed demand (in kW)
	Total	of which night	
D _a	600		3
D _b	1 200		3 - 4
D _c	3 500	1 300	4 - 9
D _d	7 500	2 500	6 - 9
D _e	20 000	15 000	9

Prices for the standard consumers are given in national currencies, PPS (purchasing power standard as at 27 March for 1996) and in ECU (average value for January 1996).

Conversion table in PPS and ECU


1 PPS =

B (BFR)	40.95	E (PTA)	135.75	L (LFR)	43.52	FIN (FMK)	6.70
DK (DKR)	9.67	F (FF)	7.09	NL (HFL)	2.31	S (SKR)	11.13
D (DM)	2.30	IRL (IRL)	0.71	A (ÖS)	15.35	UK (UKL)	0.69
GR (DR)	246.87	I (LIT)	1758.88	P (ESC)	138.61	N (NKR)	9.27


1 ECU =

B (BFR)	38.79	E (PTA)	159.11	L (LFR)	38.79	FIN (FMK)	5.74
DK (DKR)	7.30	F (FF)	6.46	NL (HFL)	2.11	S (SKR)	8.69
D (DM)	1.89	IRL (IRL)	0.81	A (ÖS)	13.27	UK (UKL)	0.84
GR (DR)	310.63	I (LIT)	2045.84	P (ESC)	195.83	N (NKR)	8.29


PRIX DE L'ELECTRICITE POUR USAGES DOMESTIQUES

JANUAR 01 JANUARY 1996 JANVIER	NATIONALE WAERHUNG NATIONAL CURRENCY / KWH MONNAIE NATIONALE			KKS	PPS	SPA / 100 KWH	ECUS / 100 KWH			
	VERBRAUCHER-TYPEN STANDARD CONSUMERS CONSOMMATEURS TYPE	STEUERN INBEGR. WITH TAXES COMPRISES	OHNE MWST. VAT EXCL. HORS TVA				OHNE STEUERN TAXES EXCL. HORS TAXES	STEUERN INBEGR. WITH TAXES COMPRISES	OHNE MWST. VAT EXCL. TVA	
	BELGIQUE (BFR)			NATIONAL						
DA	9.00	7.44	7.38	21.98	18.16	18.03	23.19	19.17	19.03	
DB	8.16	6.75	6.69	19.94	16.48	16.34	21.04	17.39	17.25	
DC	5.88	4.86	4.80	14.35	11.86	11.72	15.14	12.51	12.37	
DD	5.30	4.38	4.32	12.94	10.69	10.56	13.66	11.28	11.14	
DE	3.36	2.78	2.72	8.21	6.78	6.65	8.66	7.16	7.01	
	DANMARK (ORE)			NATIONAL						
DA	181.00	144.80	97.90	18.64	14.91	10.08	24.80	19.84	13.41	
DB	142.73	114.18	67.28	14.70	11.76	6.93	19.55	15.64	9.22	
DC	117.63	94.10	47.20	12.12	9.69	4.86	16.12	12.89	6.47	
DD	110.21	88.17	41.27	11.35	9.08	4.25	15.10	12.08	5.65	
DE	100.39	80.31	36.21	10.34	8.27	3.73	13.75	11.00	4.96	
	DEUTSCHLAND (PF)			DUESSELDORF						
DA	40.14	34.90	34.90	17.46	15.18	15.18	21.23	18.46	18.46	
DB	32.66	28.40	28.40	14.21	12.35	12.35	17.28	15.02	15.02	
DC	28.04	24.38	24.38	12.20	10.61	10.61	14.83	12.90	12.90	
DD	25.70	22.35	22.35	11.18	9.72	9.72	13.60	11.82	11.82	
DE	14.72	12.80	12.80	6.40	5.57	5.57	7.79	6.77	6.77	
				HAMBURG						
DA	54.05	47.00	47.00	23.51	20.45	20.45	28.59	24.86	24.86	
DB	42.55	37.00	37.00	18.51	16.10	16.10	22.51	19.57	19.57	
DC	31.41	27.31	27.31	13.66	11.88	11.88	16.62	14.45	14.45	
DD	28.83	25.07	25.07	12.54	10.91	10.91	15.25	13.26	13.26	
DE	16.80	14.61	14.61	7.31	6.36	6.36	8.89	7.73	7.73	
				HANNOVER						
DA	38.64	33.60	33.60	16.81	14.62	14.62	20.44	17.77	17.77	
DB	32.32	28.10	28.10	14.06	12.22	12.22	17.10	14.86	14.86	
DC	26.46	23.01	23.01	11.51	10.01	10.01	14.00	12.17	12.17	
DD	25.05	21.79	21.79	10.90	9.48	9.48	13.25	11.53	11.53	
DE	15.00	13.05	13.05	6.53	5.68	5.68	7.94	6.90	6.90	
				WESTLICHES GEBIET						
DA	44.05	38.30	38.30	19.16	16.66	16.66	23.30	20.26	20.26	
DB	33.70	29.30	29.30	14.66	12.75	12.75	17.83	15.50	15.50	
DC	25.47	22.15	22.15	11.08	9.64	9.64	13.47	11.72	11.72	
DD	23.01	20.01	20.01	10.01	8.70	8.70	12.17	10.59	10.59	
DE	13.41	11.66	11.66	5.83	5.07	5.07	7.09	6.17	6.17	
				FRANKFURT/M						
DA	37.95	33.00	33.00	16.51	14.36	14.36	20.08	17.46	17.46	
DB	33.58	29.20	29.20	14.61	12.70	12.70	17.76	15.45	15.45	
DC	27.62	24.02	24.02	12.01	10.45	10.45	14.61	12.71	12.71	
DD	26.43	22.98	22.98	11.50	10.00	10.00	13.98	12.16	12.16	
DE	14.05	12.22	12.22	6.11	5.32	5.32	7.43	6.46	6.46	


PRIX DE L'ELECTRICITE POUR USAGES DOMESTIQUES

JANUAR 01 JANUARY 1996 JANVIER	NATIONALE WAEHRUNG NATIONAL CURRENCY / KWH MONNAIE NATIONALE			KKS	PPS	SPA / 100 KWH	ECUS / 100 KWH		
	VERBRAUCHER-TYPEN STANDARD CONSUMERS CONSOMMATEURS TYPE	STEUERN INBEGR. WITH TAXES COMPRISES	OHNE MWST. VAT EXCL. HORS TVA						
	DEUTSCHLAND (PF)			STUTTGART					
DA	55.32	48.10	48.10	24.06	20.92	20.92	29.26	25.44	25.44
DB	40.60	35.30	35.30	17.66	15.36	15.36	21.48	18.67	18.67
DC	28.03	24.37	24.37	12.19	10.60	10.60	14.83	12.89	12.89
DD	25.16	21.87	21.87	10.94	9.51	9.51	13.31	11.57	11.57
DE	14.41	12.53	12.53	6.27	5.45	5.45	7.62	6.63	6.63
				MUENCHEN					
DA	39.16	34.05	34.05	17.03	14.81	14.81	20.72	18.01	18.01
DB	36.28	31.55	31.55	15.78	13.72	13.72	19.19	16.69	16.69
DC	30.77	26.75	26.75	13.38	11.64	11.64	16.28	14.15	14.15
DD	29.91	26.01	26.01	13.01	11.31	11.31	15.82	13.76	13.76
DE	16.78	14.59	14.59	7.30	6.35	6.35	8.88	7.72	7.72
				SUEDLICHES GEBIET					
DA	61.41	53.40	53.40	26.71	23.23	23.23	32.49	28.25	28.25
DB	44.51	38.70	38.70	19.36	16.83	16.83	23.55	20.47	20.47
DC	30.96	26.92	26.92	13.47	11.71	11.71	16.38	14.24	14.24
DD	27.66	24.05	24.05	12.03	10.46	10.46	14.63	12.72	12.72
DE	16.13	14.03	14.03	7.02	6.10	6.10	8.53	7.42	7.42
				ERFURT					
DA	48.19	41.90	41.90	20.96	18.23	18.23	25.49	22.17	22.17
DB	38.99	33.90	33.90	16.96	14.75	14.75	20.63	17.93	17.93
DC	26.88	23.37	23.37	11.69	10.17	10.17	14.22	12.36	12.36
DD	25.20	21.91	21.91	10.96	9.53	9.53	13.33	11.59	11.59
DE	15.93	13.85	13.85	6.93	6.02	6.02	8.43	7.33	7.33
				LEIPZIG					
DA	37.03	32.20	32.20	16.11	14.01	14.01	19.59	17.03	17.03
DB	32.72	28.45	28.45	14.23	12.38	12.38	17.31	15.05	15.05
DC	28.93	25.16	25.16	12.58	10.94	10.94	15.30	13.31	13.31
DD	27.18	23.63	23.63	11.82	10.28	10.28	14.38	12.50	12.50
DE	17.34	15.08	15.08	7.54	6.56	6.56	9.17	7.98	7.98
				ROSTOCK					
DA	44.74	38.90	38.90	19.46	16.92	16.92	23.67	20.58	20.58
DB	37.84	32.90	32.90	16.46	14.31	14.31	20.02	17.40	17.40
DC	30.65	26.65	26.65	13.33	11.59	11.59	16.21	14.10	14.10
DD	29.75	25.87	25.87	12.94	11.25	11.25	15.74	13.69	13.69
DE	16.59	14.43	14.43	7.22	6.28	6.28	8.78	7.63	7.63
	ELLAS (DRA)			ATHINAI					
DA	27.92	23.66	23.66	11.31	9.58	9.58	8.99	7.62	7.62
DB	26.21	22.21	22.21	10.62	9.00	9.00	8.44	7.15	7.15
DC	22.33	18.92	18.92	9.04	7.66	7.66	7.19	6.09	6.09
DD	28.63	24.26	24.26	11.60	9.83	9.83	9.22	7.81	7.81
DE	20.48	17.36	17.36	8.29	7.03	7.03	6.59	5.59	5.59


PRIX DE L'ELECTRICITE POUR USAGES DOMESTIQUES

JANUAR 01 JANUARY 1996 JANVIER	NATIONALE WAEHRUNG NATIONAL CURRENCY / KWH MONNAIE NATIONALE			KKS	PPS	SPA / 100 KWH	ECUS / 100 KWH			
	STEUERN INBEGR. WITH TAXES COMPRISES	OHNE MWST. VAT EXCL. HORS TVA	OHNE STEUERN TAXES EXCL. HORS TAXES							
VERBRAUCHER-TYPEN STANDARD CONSUMERS CONSOMMATEURS TYPE	STEUERN INBEGR. WITH TAXES COMPRISES	OHNE MWST. VAT EXCL. HORS TVA	OHNE STEUERN TAXES EXCL. HORS TAXES	STEUERN INBEGR. WITH TAXES COMPRISES	OHNE MWST. VAT EXCL. TVA	OHNE STEUERN TAXES HORS TAXES	STEUERN INBEGR. WITH TAXES COMPRISES	OHNE MWST. VAT EXCL. HORS TVA	OHNE STEUERN TAXES EXCL. HORS TAXES	
ESPANA (PTA)										
MADRID										
DA	25.78	22.22	22.22	19.00	16.38	16.38	16.19	13.95	13.95	
DB	25.78	22.22	22.22	19.00	16.38	16.38	16.19	13.95	13.95	
DC	20.16	17.38	17.38	14.86	12.81	12.81	12.66	10.91	10.91	
DD	18.51	15.96	15.96	13.64	11.76	11.76	11.62	10.02	10.02	
DE	13.20	11.38	11.38	9.73	8.39	8.39	8.29	7.15	7.15	
FRANCE (CENT.)										
PARIS										
DA	118.39	98.17	88.79	16.69	13.84	12.52	18.35	15.22	13.76	
DB	104.05	86.28	78.04	14.67	12.17	11.00	16.13	13.37	12.10	
DC	88.13	73.08	66.10	12.43	10.30	9.32	13.66	11.33	10.25	
DD	85.01	70.49	63.75	11.99	9.94	8.99	13.18	10.93	9.88	
DE	68.49	56.79	51.37	9.66	8.01	7.24	10.62	8.80	7.96	
LILLE										
DA	117.36	97.31	88.79	16.55	13.72	12.52	18.19	15.08	13.76	
DB	103.15	85.53	78.04	14.54	12.06	11.00	15.99	13.26	12.10	
DC	87.36	72.44	66.10	12.32	10.21	9.32	13.54	11.23	10.25	
DD	84.27	69.88	63.75	11.88	9.85	8.99	13.06	10.83	9.88	
DE	67.90	56.30	51.37	9.57	7.94	7.24	10.52	8.73	7.96	
STRASBOURG										
DA	110.51	91.63	88.79	15.58	12.92	12.52	17.13	14.20	13.76	
DB	97.13	80.54	78.04	13.70	11.36	11.00	15.06	12.48	12.10	
DC	82.26	68.21	66.10	11.60	9.62	9.32	12.75	10.57	10.25	
DD	79.35	65.79	63.75	11.19	9.28	8.99	12.30	10.20	9.88	
DE	63.93	53.01	51.37	9.01	7.47	7.24	9.91	8.22	7.96	
LYON										
DA	117.36	97.31	88.79	16.55	13.72	12.52	18.19	15.08	13.76	
DB	103.15	85.53	78.04	14.54	12.06	11.00	15.99	13.26	12.10	
DC	87.36	72.44	66.10	12.32	10.21	9.32	13.54	11.23	10.25	
DD	84.27	69.88	63.75	11.88	9.85	8.99	13.06	10.83	9.88	
DE	67.90	56.30	51.37	9.57	7.94	7.24	10.52	8.73	7.96	
MARSEILLE										
DA	117.36	97.31	88.79	16.55	13.72	12.52	18.19	15.08	13.76	
DB	103.15	85.53	78.04	14.54	12.06	11.00	15.99	13.26	12.10	
DC	87.36	72.44	66.10	12.32	10.21	9.32	13.54	11.23	10.25	
DD	84.27	69.88	63.75	11.88	9.85	8.99	13.06	10.83	9.88	
DE	67.90	56.30	51.37	9.57	7.94	7.24	10.52	8.73	7.96	
TOULOUSE										
DA	117.36	97.31	88.79	16.55	13.72	12.52	18.19	15.08	13.76	
DB	103.15	85.53	78.04	14.54	12.06	11.00	15.99	13.26	12.10	
DC	87.36	72.44	66.10	12.32	10.21	9.32	13.54	11.23	10.25	
DD	84.27	69.88	63.75	11.88	9.85	8.99	13.06	10.83	9.88	
DE	67.90	56.30	51.37	9.57	7.94	7.24	10.52	8.73	7.96	


PRIX DE L'ELECTRICITE POUR USAGES DOMESTIQUES

JANUAR 01 JANUARY 1996 JANVIER		NATIONALE WAEHRUNG NATIONAL CURRENCY / KWH MONNAIE NATIONALE			KKS	PPS	SPA / 100 KWH		ECUS / 100 KWH		
VERBRAUCHER-TYPEN STANDARD CONSUMERS CONSUMMATEURS TYPE	STEUERN INBEGR. TAXES COMPRISES	OHNE MWST. VAT EXCL. HORS TVA	OHNE STEUERN TAXES EXCL. HORS TAXES	STEUERN INBEGR. TAXES COMPRISES	OHNE MWST. VAT EXCL. HORS TVA	OHNE STEUERN TAXES EXCL. HORS TAXES	STEUERN INBEGR. TAXES COMPRISES	OHNE MWST. VAT EXCL. HORS TVA	OHNE STEUERN TAXES EXCL. HORS TAXES	OHNE STEUERN TAXES EXCL. HORS TAXES	
IRELAND (P)											
DUBLIN											
DA	11.239	9.990	9.990	15.80	14.05	14.05	13.78	12.25	12.25		
DB	9.444	8.395	8.395	13.28	11.80	11.80	11.58	10.29	10.29		
DC	6.578	5.847	5.847	9.25	8.22	8.22	8.06	7.17	7.17		
DD	6.423	5.709	5.709	9.03	8.03	8.03	7.87	7.00	7.00		
DE	4.350	3.867	3.867	6.12	5.44	5.44	5.33	4.74	4.74		
ITALIA (LIT)											
NATIONAL											
DA	130.68	118.80	98.10	7.45	6.77	5.59	6.40	5.82	4.81		
DB	147.98	134.53	113.83	8.43	7.67	6.49	7.25	6.59	5.58		
DC	413.02	375.47	308.57	23.54	21.40	17.59	20.24	18.40	15.12		
DD	382.07	347.34	280.44	21.78	19.80	15.99	18.72	17.02	13.74		
DE											
G. D. LUXEMBOURG (LFR)											
NATIONAL											
DA	8.97	8.46	8.46	20.61	19.45	19.45	23.12	21.81	21.81		
DB	6.71	6.33	6.33	15.43	14.55	14.55	17.30	16.32	16.32		
DC	4.48	4.23	4.23	10.30	9.71	9.71	11.55	10.89	10.89		
DD	4.35	4.10	4.10	9.98	9.42	9.42	11.20	10.56	10.56		
DE	2.94	2.77	2.77	6.75	6.37	6.37	7.57	7.14	7.14		
NEDERLANDS (CENTS)											
ROTTERDAM											
DA	35.98	30.62	30.62	15.54	13.23	13.23	17.02	14.48	14.48		
DB	31.49	26.80	26.80	13.60	11.58	11.58	14.89	12.68	12.68		
DC	26.24	22.33	22.33	11.34	9.65	9.65	12.41	10.56	10.56		
DD	25.07	21.34	21.34	10.83	9.22	9.22	11.86	10.09	10.09		
DE	18.43	15.69	15.69	7.96	6.78	6.78	8.72	7.42	7.42		
NOORD-HOLLAND											
DA	31.56	26.86	26.86	13.63	11.60	11.60	14.93	12.70	12.70		
DB	27.13	23.09	23.09	11.72	9.97	9.97	12.83	10.92	10.92		
DC	24.03	20.45	20.45	10.38	8.83	8.83	11.37	9.67	9.67		
DD	23.28	19.81	19.81	10.06	8.56	8.56	11.01	9.37	9.37		
DE	17.80	15.15	15.15	7.69	6.54	6.54	8.42	7.17	7.17		
NOORD-BRABANT											
DA	32.85	27.96	27.96	14.19	12.08	12.08	15.54	13.23	13.23		
DB	27.07	23.04	23.04	11.69	9.95	9.95	12.80	10.90	10.90		
DC	25.04	21.31	21.31	10.82	9.21	9.21	11.84	10.08	10.08		
DD	24.06	20.48	20.48	10.39	8.85	8.85	11.38	9.69	9.69		
DE	17.77	15.12	15.12	7.68	6.53	6.53	8.41	7.15	7.15		
OESTERREICH (OS)											
OBEROESTERREICH/TIROL/WIEN											
DA	2.02	1.68	1.68	13.16	10.94	10.94	15.22	12.66	12.66		
DB	1.94	1.62	1.62	12.64	10.55	10.55	14.61	12.20	12.20		
DC	1.64	1.37	1.37	10.68	8.92	8.92	12.35	10.32	10.32		
DD	1.66	1.38	1.38	10.81	8.99	8.99	12.50	10.40	10.40		
DE	1.32	1.10	1.10	8.60	7.17	7.17	9.94	8.29	8.29		

PRIX DE L'ELECTRICITE POUR USAGES DOMESTIQUES

JANUAR 01 JANUARY 1996 JANVIER	NATIONALE WAEHRUNG NATIONAL CURRENCY / KWH MONNAIE NATIONALE			KKS	PPS	SPA / 100 KWH	ECUS / 100 KWH			
	VERBRAUCHER-TYPEN STANDARD CONSUMERS CONSUMMATEURS TYPE	STEUERN INBEGR. WITH TAXES COMPRISES	OHNE MWST. VAT EXCL. HORS TVA				OHNE STEUERN TAXES EXCL. HORS TAXES	STEUERN INBEGR. WITH TAXES COMPRISES	OHNE MWST. VAT EXCL. HORS TVA	
PORTUGAL (ESC)										
LISBOA										
DA	26.250	25.000	24.800	18.93	18.03	17.88	13.41	12.78	12.67	
DB	30.080	28.650	28.550	21.69	20.66	20.58	15.37	14.64	14.59	
DC	25.920	24.690	24.650	18.69	17.80	17.77	13.25	12.62	12.60	
DD	23.000	21.910	21.890	16.58	15.80	15.78	11.75	11.20	11.19	
DE	17.120	16.310	16.300	12.34	11.76	11.75	8.75	8.33	8.33	
SUOMI/FINLAND (CFM)										
NATIONAL										
DA	97.70	80.10	80.10	14.56	11.93	11.93	17.00	13.94	13.94	
DB	69.70	57.10	57.10	10.39	8.51	8.51	12.13	9.94	9.94	
DC	53.90	44.20	44.20	8.03	6.59	6.59	9.38	7.69	7.69	
DD	46.40	38.00	38.00	6.91	5.66	5.66	8.07	6.61	6.61	
DE	31.50	25.80	25.80	4.69	3.84	3.84	5.48	4.49	4.49	
SVERIGE										
DA										
DB										
DC										
DD										
DE										
UNITED KINGDOM (P)										
LONDON										
DA	15.714	14.550	14.550	22.49	20.82	20.82	18.62	17.24	17.24	
DB	11.642	10.780	10.780	16.66	15.43	15.43	13.80	12.77	12.77	
DC	8.005	7.412	7.412	11.46	10.61	10.61	9.49	8.78	8.78	
DD	7.273	6.734	6.734	10.41	9.64	9.64	8.62	7.98	7.98	
DE	4.590	4.250	4.250	6.57	6.08	6.08	5.44	5.04	5.04	
LEEDS										
DA	14.706	13.617	13.617	21.04	19.49	19.49	17.43	16.14	16.14	
DB	11.106	10.283	10.283	15.89	14.71	14.71	13.16	12.19	12.19	
DC	7.705	7.135	7.135	11.03	10.21	10.21	9.13	8.45	8.45	
DD	7.038	6.517	6.517	10.07	9.33	9.33	8.34	7.72	7.72	
DE	4.509	4.175	4.175	6.45	5.97	5.97	5.34	4.95	4.95	
BIRMINGHAM										
DA	14.083	13.040	13.040	20.15	18.66	18.66	16.69	15.45	15.45	
DB	10.919	10.110	10.110	15.63	14.47	14.47	12.94	11.98	11.98	
DC	7.926	7.339	7.339	11.34	10.50	10.50	9.39	8.70	8.70	
DD	7.299	6.758	6.758	10.44	9.67	9.67	8.65	8.01	8.01	
DE	4.593	4.253	4.253	6.57	6.09	6.09	5.44	5.04	5.04	
GLASGOW										
DA	14.980	13.870	13.870	21.44	19.85	19.85	17.75	16.44	16.44	
DB	11.340	10.500	10.500	16.23	15.03	15.03	13.44	12.44	12.44	
DC	8.280	7.670	7.670	11.85	10.98	10.98	9.81	9.09	9.09	
DD	7.480	6.920	6.920	10.70	9.90	9.90	8.86	8.20	8.20	
DE	4.690	4.340	4.340	6.71	6.21	6.21	5.56	5.14	5.14	


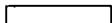
PRIX DE L'ELECTRICITE POUR USAGES DOMESTIQUES

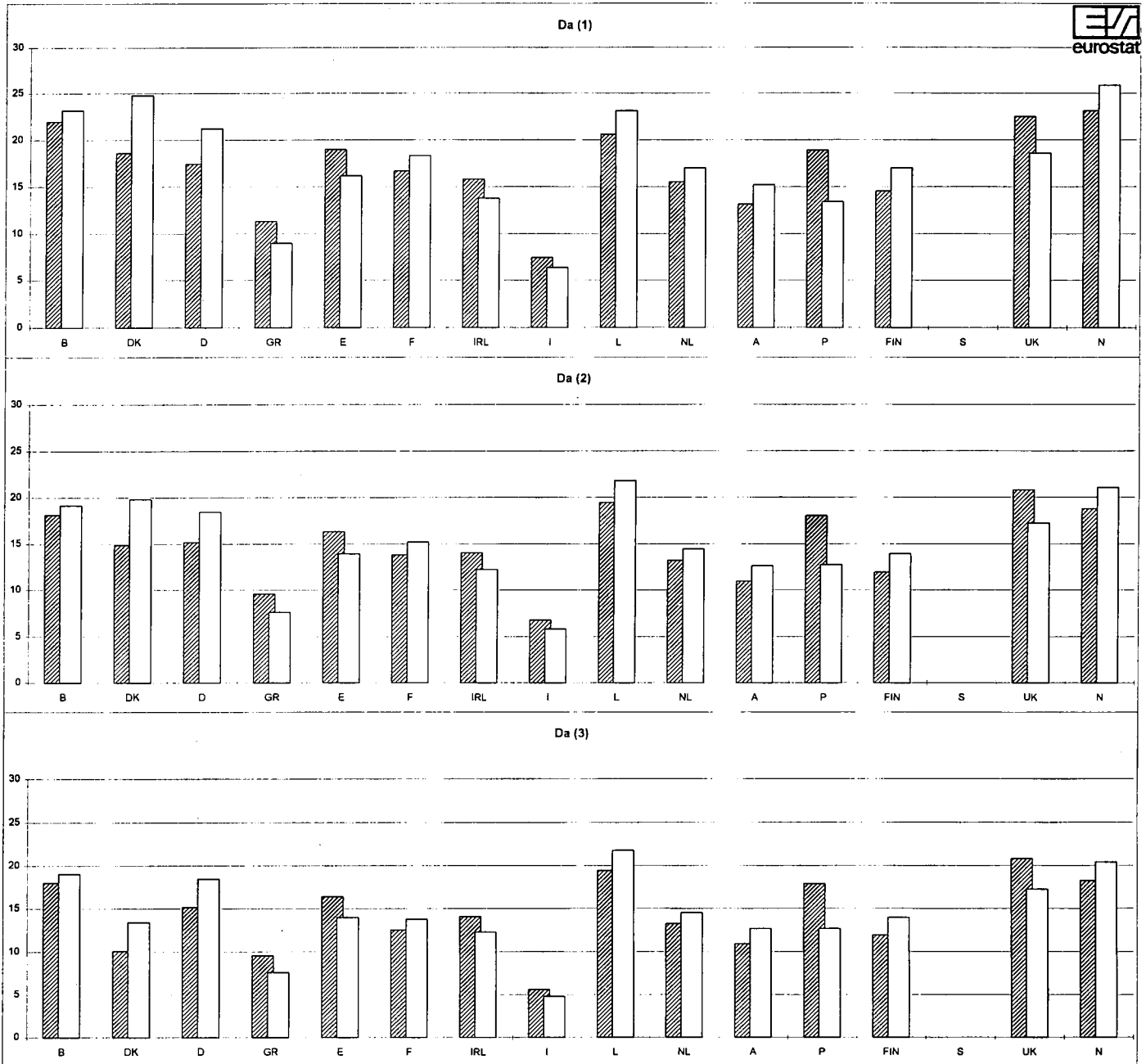
JANUAR 01 JANUARY 1996 JANVIER	NATIONALE WAEHRUNG NATIONAL CURRENCY / KWH MONNAIE NATIONALE			KKS	PPS	SPA / 100 KWH	ECUS / 100 KWH			
	VERBRAUCHER-TYPEN STANDARD CONSUMERS CONSOMMATEURS TYPE	STEUERN INBEGR. TAXES COMPRISES	OHNE MWST. VAT EXCL. HORS TVA							
NORGE (1)										
DA	214.00	174.00	168.70	23.11	18.79	18.22	25.89	21.05	20.41	
DB	129.20	105.00	99.70	13.95	11.34	10.77	15.63	12.71	12.06	
DC	73.40	59.70	54.40	7.93	6.45	5.88	8.88	7.22	6.58	
DD	57.90	47.00	41.70	6.25	5.08	4.50	7.01	5.69	5.05	
DE	49.40	40.10	34.80	5.34	4.33	3.76	5.98	4.85	4.21	

(1) IM RAHMEN DER ABKOMMEN MIT DEN MITGLIEDSTAATEN DES EUROPÄISCHEN WIRTSCHAFTSRAUMS (EWR) SIND DIE GASPREISE FUER NORWEGEN AUCH VERÖFFENTLICHT / IN THE FRAMEWORK OF THE AGREEMENTS CONCLUDED BETWEEN THE MEMBER COUNTRIES OF THE EUROPEAN ECONOMIC AGREEMENT (EEA), PRICES FOR NORWAY ARE ALSO PUBLISHED / DANS LE CADRE DES ACCORDS PASSES ENTRE LES PAYS MEMBRES DE L'ESPACE ECONOMIQUE EUROPEEN (EEE), LES PRIX DE LA NORVEGE SONT EGALEMENT PUBLIES

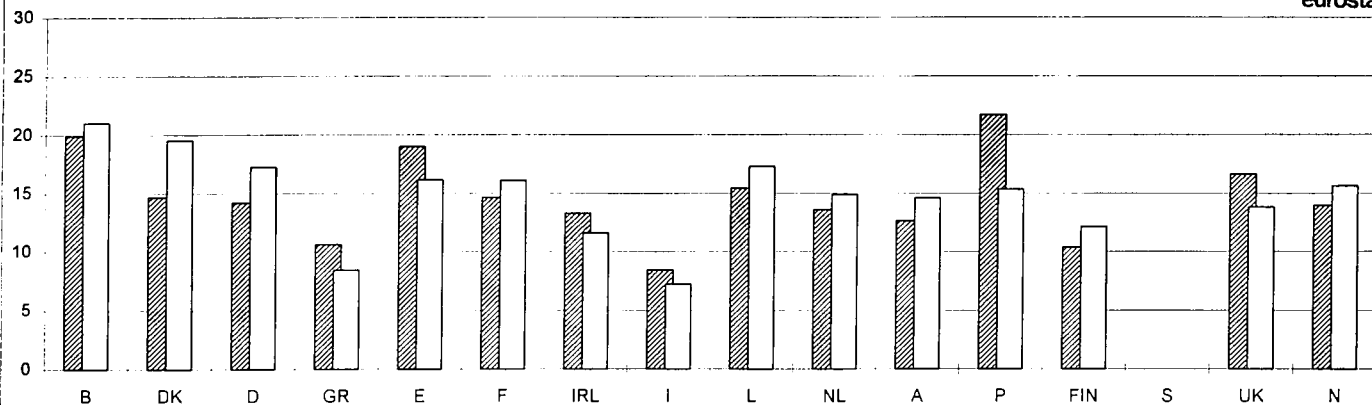
ELEKTRIZITAETSPREISE FUER HAUSHALTE
 ELECTRICITY PRICES FOR HOUSEHOLDS
 PRIX DE L'ELECTRICITE POUR USAGES DOMESTIQUES

1996-1

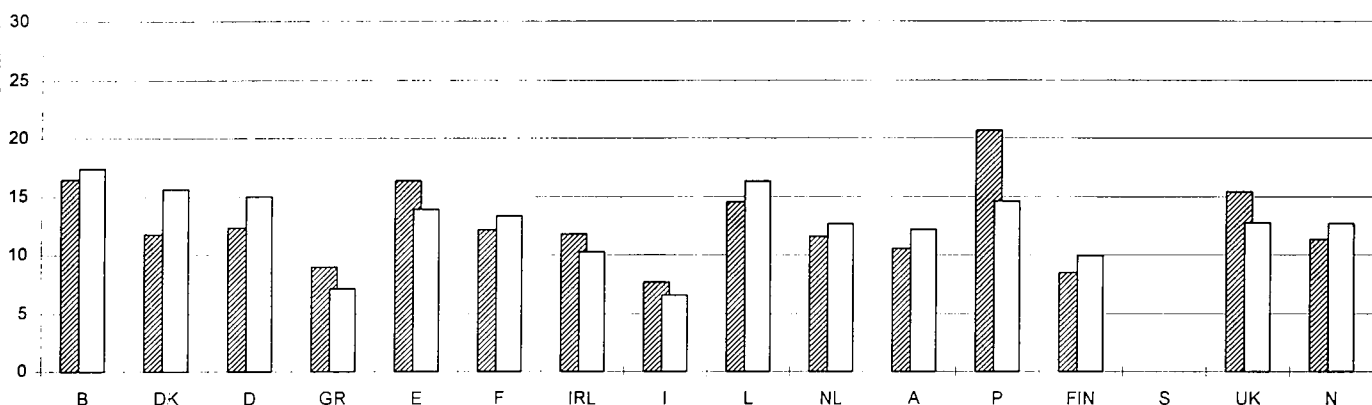
B BELGIQUE NATIONAL	IRL DUBLIN	FIN FINLAND NATIONAL	 KKS-PPS-SPA / 100 kWh	(1) STEUERN INBEGR. / TAXES INCL. / TAXES COMPRISES
DK DANMARK NATIONAL	I ITALIE NATIONAL	S SVERIGE		(2) OHNE MWSTL / VAT EXCL. / HORS TVA
D DUESSELDORF	L LUXEMBOURG	UK LONDON		(3) OHNE STEUERN / TAXES EXCL. / HORS TAXES
GR ATHINAI	NL ROTTERDAM	N NORGE	 ECU / 100 kWh	
E MADRID	A OESTERREICH			
F PARIS	P LISBOA			



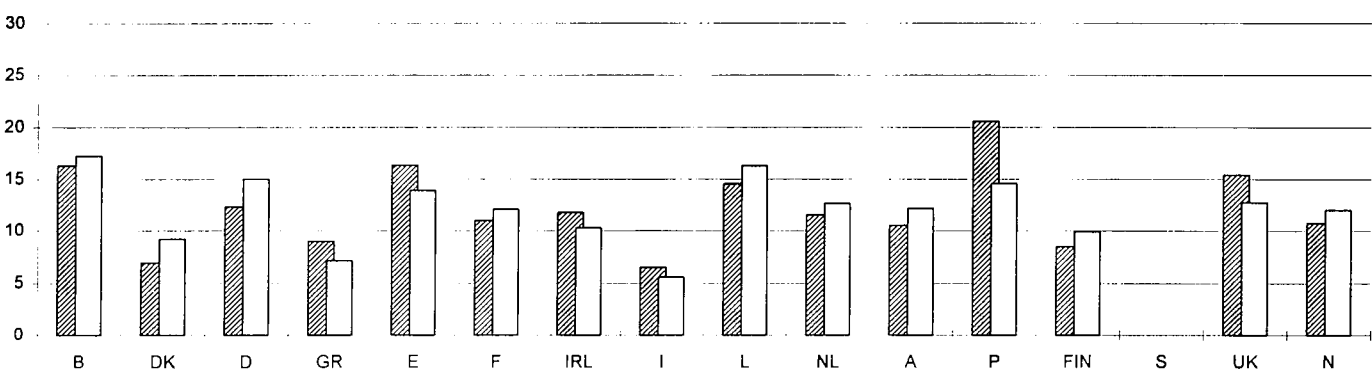
Db (1)



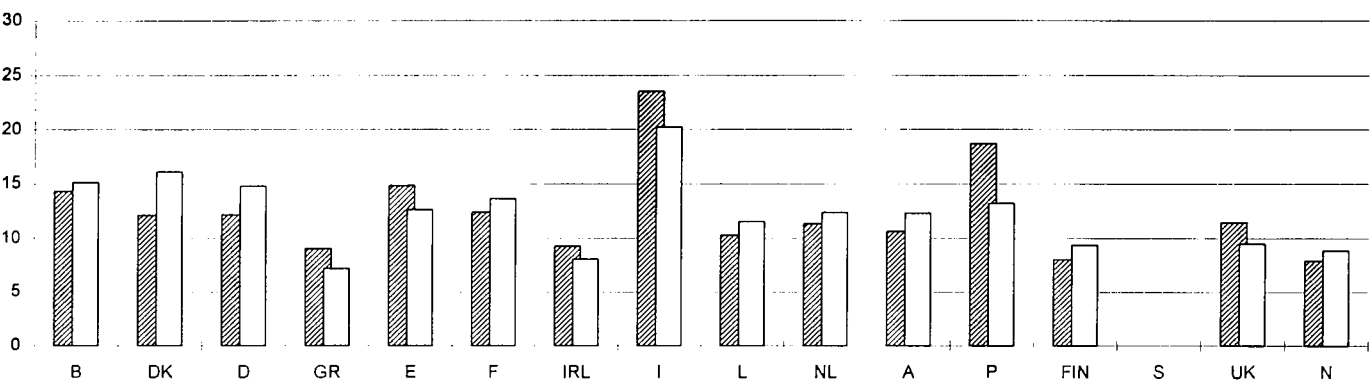
Db (2)



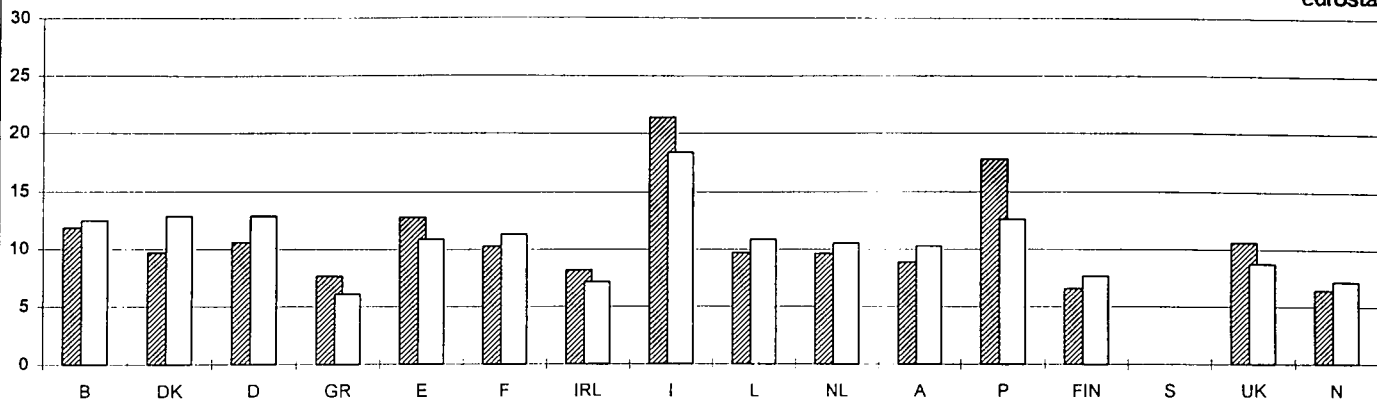
Db (3)



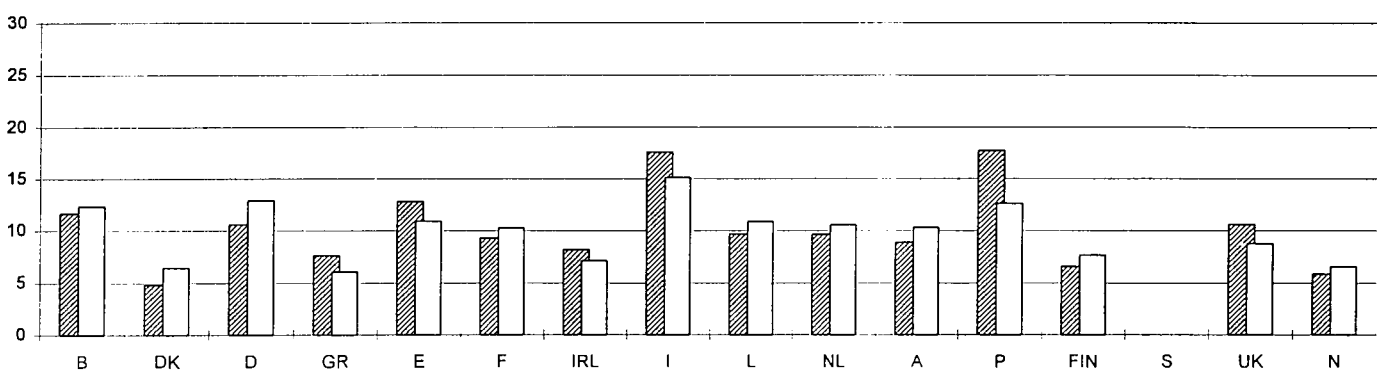
Dc (1)



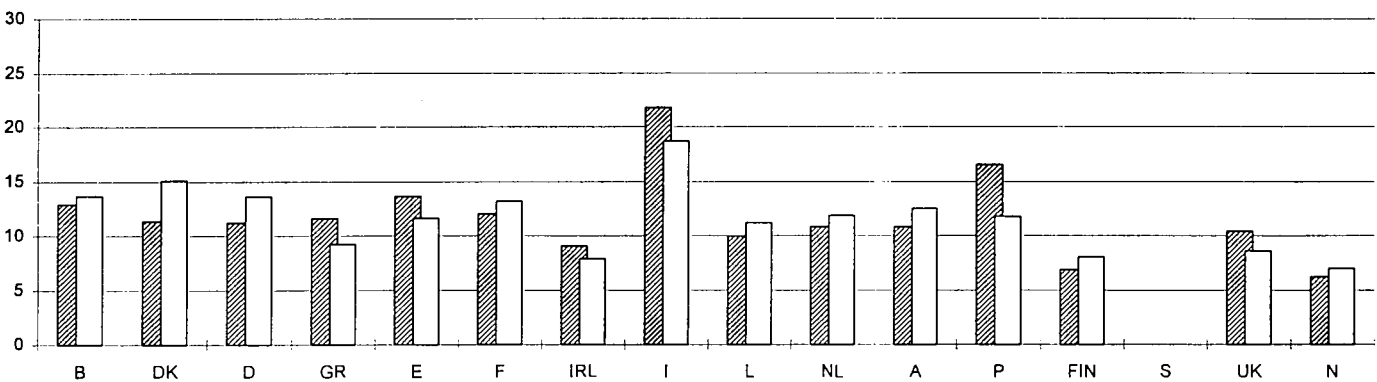
Dc (2)



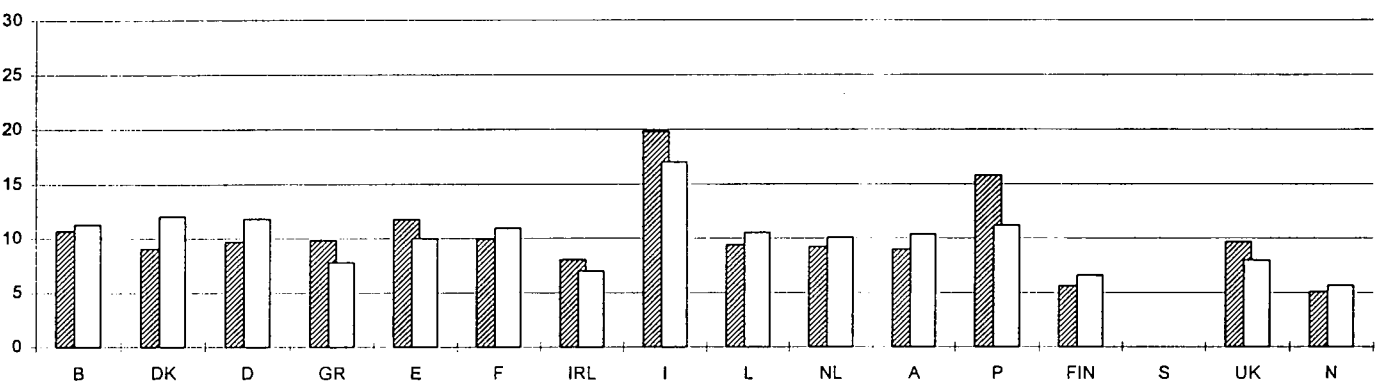
Dc (3)



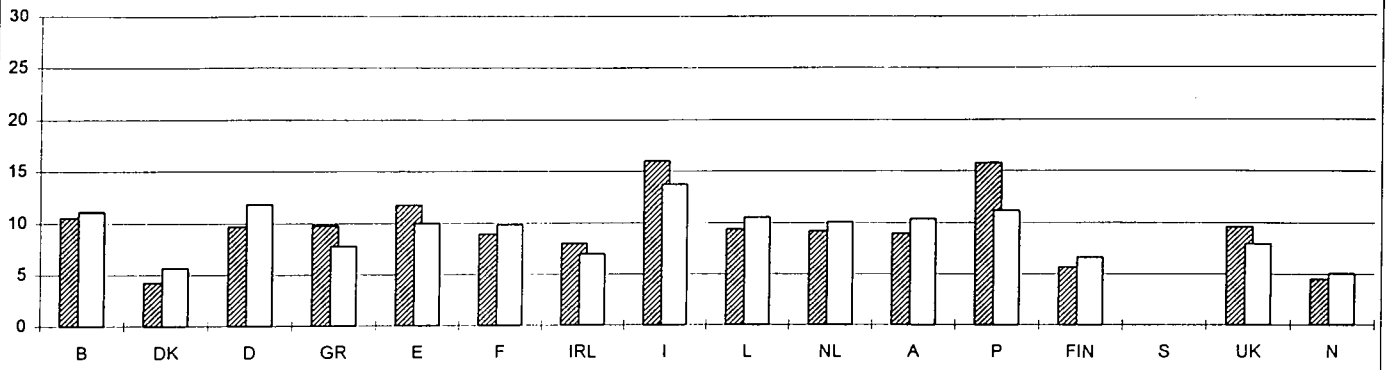
Dd (1)



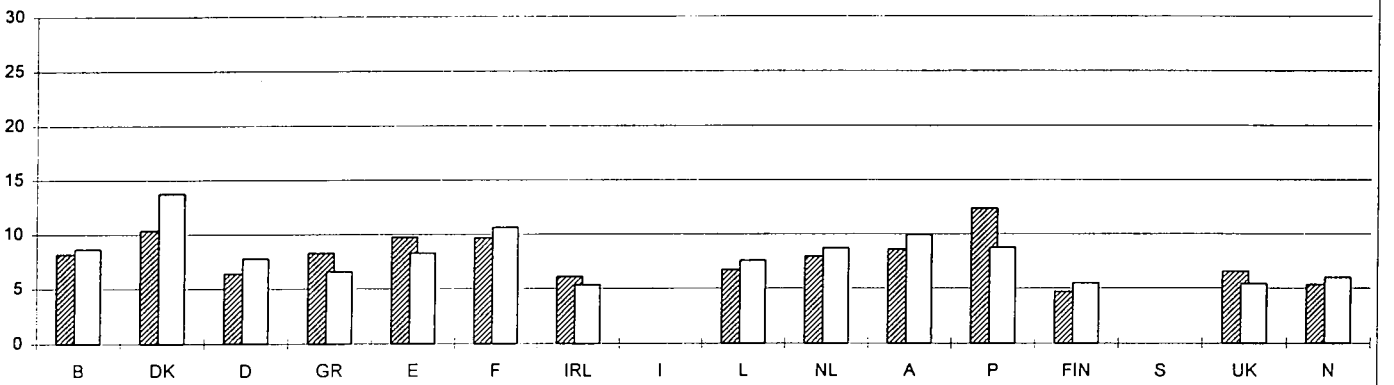
Dd (2)



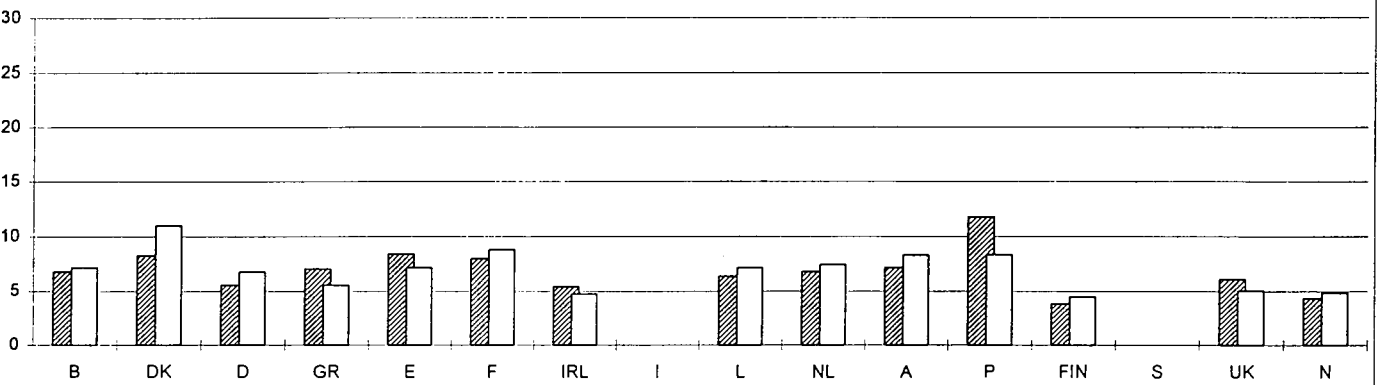
Dd (3)



De (1)



De (2)



De (3)

