

COMMISSION OF THE EUROPEAN COMMUNITIES

COM(76) 51 final.

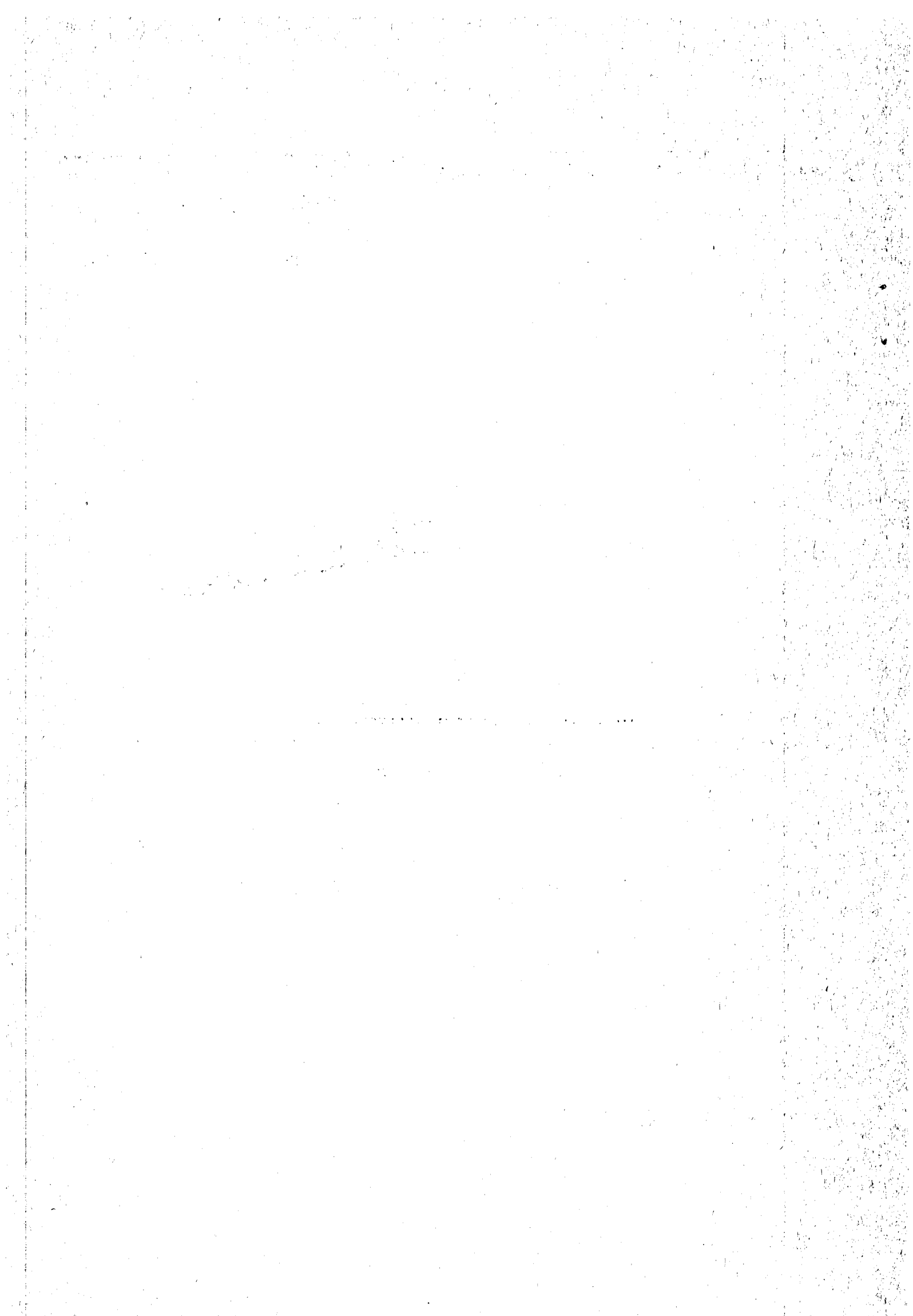
Brussels, 23 February 1976.

DRAFT

REGULATION (EEC) OF THE COUNCIL

relating to the organization of a survey on the earnings of permanent workers
employed in agriculture

(submitted to the Council by the Commission)



Explanatory Memorandum

In order to perform certain tasks assigned to it under the Treaty, the Commission needs to know the earnings situation and trends in the Community countries. It therefore requires comparable statistics on these matters.

To this end, a coordinated set of comparable statistics on earnings has been progressively developed by Community surveys conducted with the collaboration of national statistical offices. Although initially such Community surveys related only to industry and services, agriculture has recently been included within the scope of these investigations.

The work undertaken by the Working Party on Agricultural Wage Statistics, in which governments, management and labour are represented, finally led to the implementation of a Community study of the earnings of permanent workers in agriculture. Thus, a survey was carried out in 1974 and another in 1975 pursuant to Council Regulations (1); these supplied comparable information on the level and distribution of earnings, the number of paid hours and the existence or absence of benefits in kind, taking account of certain personal data on wage earners such as age, sex and professional qualifications. The results for 1974 are in the course of publication and those for 1975 will be available towards the middle of 1976.

When consulted on the appropriate follow-up to this work, the Working Party on Agricultural Wage Statistics decided on 24 October 1975, by a very large majority, to repeat the survey in 1976 in accordance with the same procedure as that adopted in 1974 and 1975.

(1) Council Regulations (EEC) no 677/74 of 21 March 1974 (OJ no L 83 of 28/3/1974, p. 4) and 1103/75 of 28 April 1975 (OJ no L 110 of 30/4/1975, p. 2).

Regulation (EEC) No _____ of the Council
of _____

relating to the organization of a survey on the earnings of permanent workers employed in agriculture.

THE COUNCIL OF THE EUROPEAN COMMUNITIES,

Having regard to the Treaty establishing the European Economic Community, and in particular Article 213 thereof;

Having regard to the draft regulation submitted by the Commission;

Whereas, in order to carry out the tasks assigned to it under the Treaty, and in particular those set out in Articles 2, 39, 117, 118, 119 and 122 thereof, the Commission needs to know the earnings situation and trends in the Member States;

Whereas such statistical data as do exist within the Member States on the earnings of agricultural workers do not at present permit valid comparisons to be made, and hence it is necessary to conduct a specific Community survey based on uniform definitions and characteristics as was done in 1974 and 1975, pursuant to Regulations (EEC) No 677/74 and 1103/75 (1);

Whereas the technical difficulties involved in a survey on earnings in agriculture make it necessary to restrict the survey at present to the earnings of permanent workers in agriculture;

Whereas it is possible and more economical to carry out such a survey by random sampling only,

HAS ADOPTED THIS REGULATION:

(1) OJ No L 83, 28.3.1974, p. 4, and OJ No L 110, 30.4.1975, p. 2.

Article 1

The Commission shall undertake a survey of the actual earnings of permanent workers employed in agriculture on the basis of the statistical data relating to September, October or November 1976.

Article 2

The survey shall cover all holdings which employ permanent workers and which engage in activities as specified and defined under class 01 of the General Nomenclature of Economic Activities in the European Communities (NACE), with the exception of holdings whose activities are mainly or exclusively directed to creating and maintaining gardens and parks, to hunting or to activities ancillary to agriculture.

Article 3

The survey shall be carried out by means of random sampling. In respect of those holdings appearing in the survey sample, employers shall supply the information required for the survey in the manner set out hereafter.

Article 4

The survey shall consist in the collection for each permanent worker of all data relating to gross cash earnings for September, October or November 1976, the existence or absence of benefit in kind, the nature of work performed, the basis on which earnings are calculated and the number of hours paid, as well as sex, age and professional qualification.

Article 5

Information shall be gathered by the statistical offices of the Member States. The Commission, with the collaboration of these offices, shall determine the technical details of the survey and the arrangements for transmitting the results to the Commission.

Article 6

Individual items of information supplied for purposes of the survey shall be used for statistical purposes only. It shall be prohibited to use the information for taxation purposes, or to communicate it to third parties.

Member States shall take appropriate measures to prevent any infringement of

- a) the obligation to supply the information referred to in Article 3,
- b) the obligation, under the first paragraph of this article, to maintain secrecy as regards the information obtained.

Article 7

To cover the expenditure incurred in conducting the survey, the Member States shall receive a global sum proportionate to the number of holdings covered. This sum shall be charged against the European Communities' budget appropriations allocated for this purpose.

This Regulation shall be binding in its entirety and directly applicable in all Member States.

Done at

For the Council

The President

Incidence financière
sur le budget communautaire
du projet de règlement relatif à l'organisation
d'une enquête sur les gains des ouvriers permanents dans l'agriculture

Comme il est prévu à l'article 7 du projet de règlement, les Etats membres recevront pour l'exécution de cette enquête une contribution forfaitaire par exploitation interrogée. Ces frais sont imputés sur les crédits prévus à cette fin au budget des Communautés européennes pour l'année 1976 (article 264 "Enquêtes et études de caractère statistique").

Compte tenu du nombre d'exploitations qu'il est envisagé d'interroger (\pm 50.000), le coût de l'enquête peut être estimé, pour les neuf Etats membres, sur la base d'une contribution de 10 unités de compte par exploitation interrogée, à 500.000 unités de compte.

•
•
•
•
•