



Theme 3  
Population and social conditions  
Series B  
Short-term statistics

STAT1127

ISSN 0252-9920

# Unemployment

7 □ 1996 Monthly

5 July 1996

## UNEMPLOYMENT IN THE EUROPEAN UNION

May 1996

**Eurostat estimates that the seasonally-adjusted unemployment rate in the European Union (fifteen Member States) for the month of May 1996 was 10.8%, representing the same level as in the previous month and an increase of +0.1% since May 1995.**

Since the beginning of 1996, unemployment has been falling slightly but regularly in Spain, Belgium and Denmark, while the biggest increases have taken place in Portugal and Sweden. Unemployment in Germany, which showed an increase earlier this year, now remains unchanged at 8.9%.

The figures for Ireland have been considerably revised in comparison with previous reports in this series, as a result of taking into account the 1996 Labour Force Survey data for Ireland.

OFICINA ESTADÍSTICA DE LAS COMUNIDADES EUROPEAS  
 DE EUROPÆISKE FÆLLESSKABERS STATISTISKE KONTOR  
 STATISTISCHES AMT DER EUROPÄISCHEN GEMEINSCHAFTEN  
 ΣΤΑΤΙΣΤΙΚΗ ΥΠΗΡΕΣΙΑ ΤΩΝ ΕΥΡΩΠΑΪΚΩΝ ΚΟΙΝΟΤΗΤΩΝ  
 STATISTICAL OFFICE OF THE EUROPEAN COMMUNITIES  
 OFFICE STATISTIQUE DES COMMUNAUTÉS EUROPÉENNES  
 ISTITUTO STATISTICO DELLE COMUNITÀ EUROPEE  
 BUREAU VOOR DE STATISTIEK DER EUROPESE GEMEENSCHAPPEN  
 SERVIÇO DE ESTATÍSTICA DAS COMUNIDADES EUROPEIAS

L-2920 Luxembourg — Tél. 43 01-1 — Télex COMEUR LU 3423  
 B-1049 Bruxelles, rue de la Loi 200 — Tél. 299 11 11

This report has been produced by the *Population, migration, employment and unemployment* unit at Eurostat. The data presented are in line with the definitions and recommendations of the International Labour Office (*Current International Recommendations on Labour Statistics*, 1988 edition, ILO Geneva). The figures have been estimated by Eurostat on the basis of the European Labour Force Survey and are presented for individual Member States of the European Union in order to facilitate international comparisons.

These figures may therefore differ from those generally used in the Member States, which usually reflect national legislation and administrative procedures, and which for this reason are less comparable between Member States.

For further information : A. Persenaire tel. Lux.4301-32005  
 R. Brandenbourger tel. Lux.4301-33272

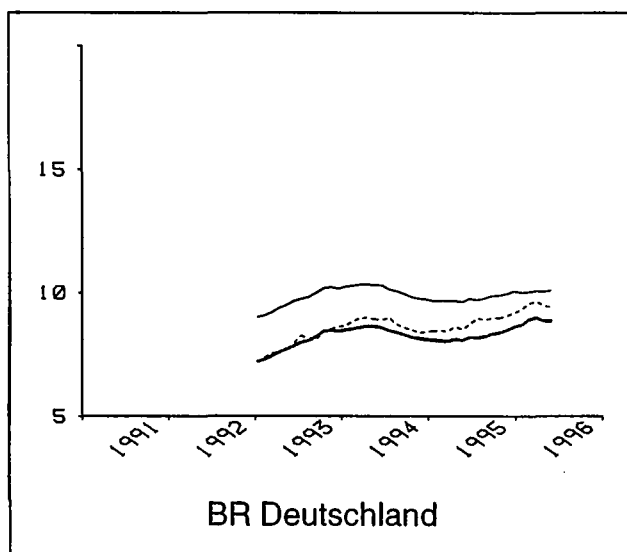
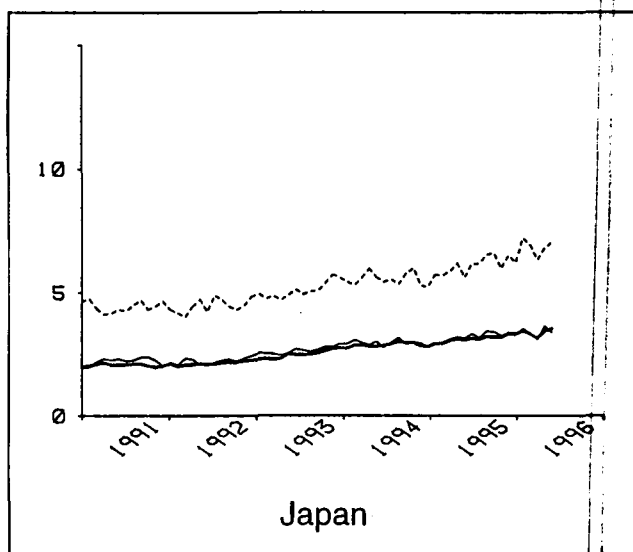
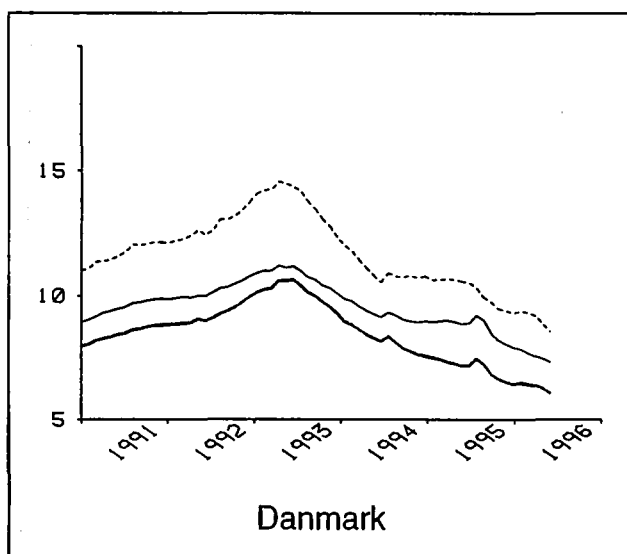
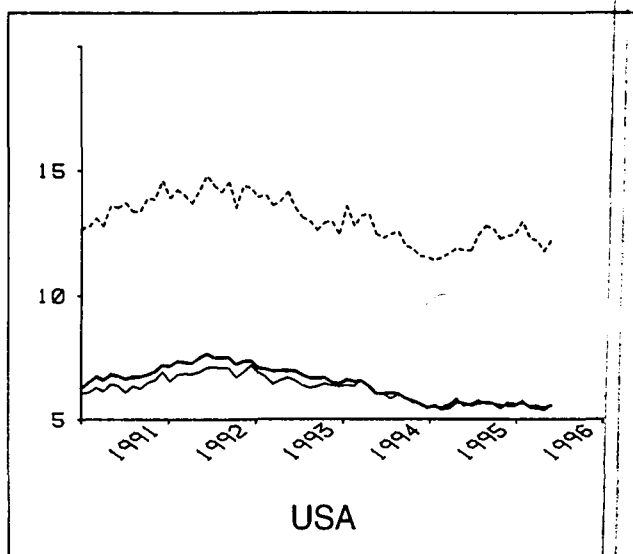
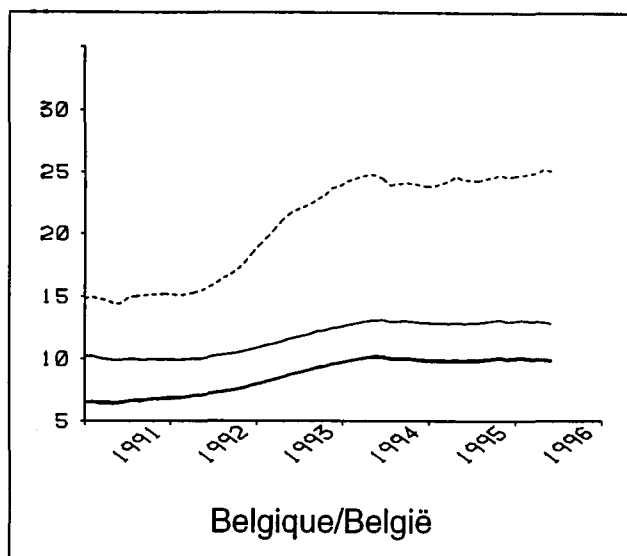
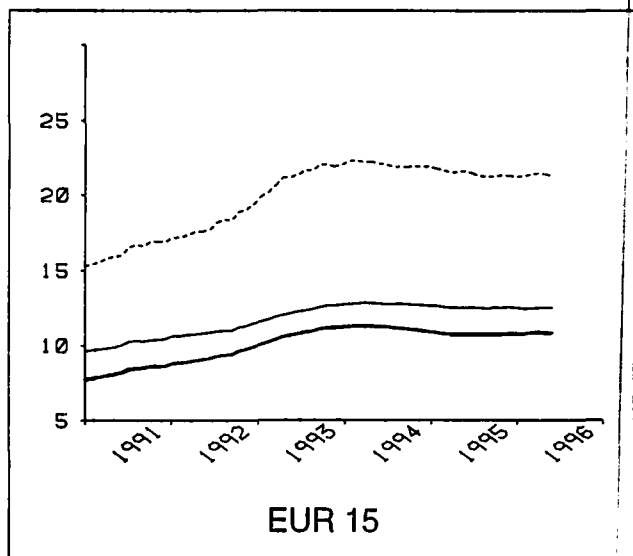
**Table of contents :**

Unemployment rates, seasonally-adjusted :	
- graphs.....	3-5
- tables .....	6-7
Unemployment rates, not seasonally-adjusted.....	8-9
Unemployment rates, annual averages.....	10-11
Number of unemployed, annual averages.....	12
Methodological notes.....	13-14

**Signs and abbreviations :**

Eur-15	All Member States of the European Union
T	Total
F	Females
< 25	Persons aged under 25
:	Data not available

## Unemployment rates, seasonally adjusted (%)

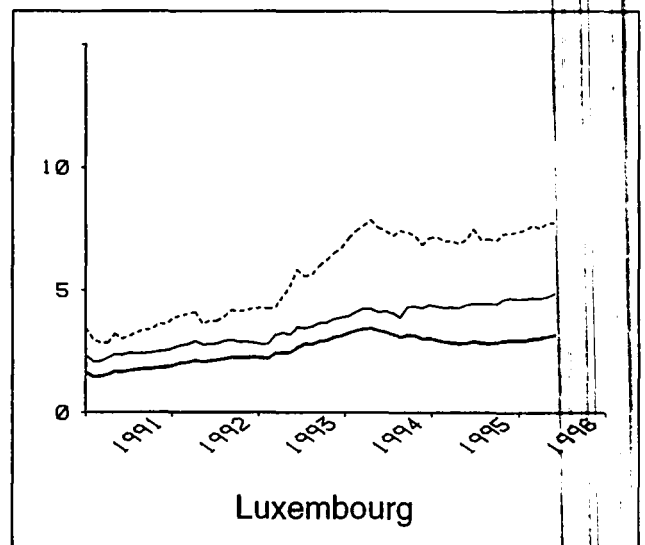
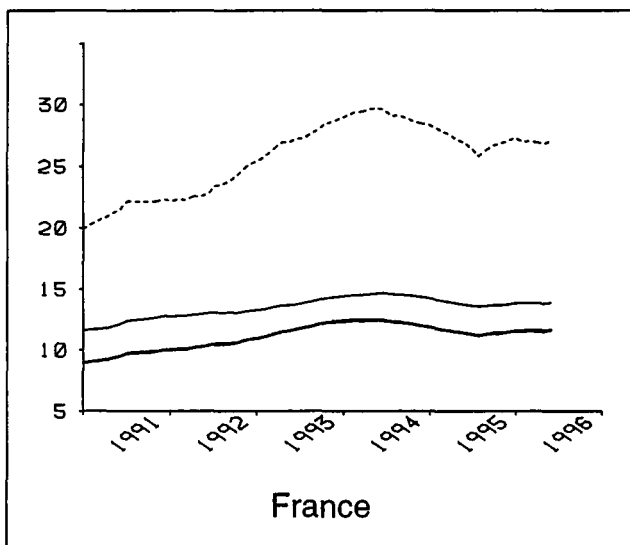
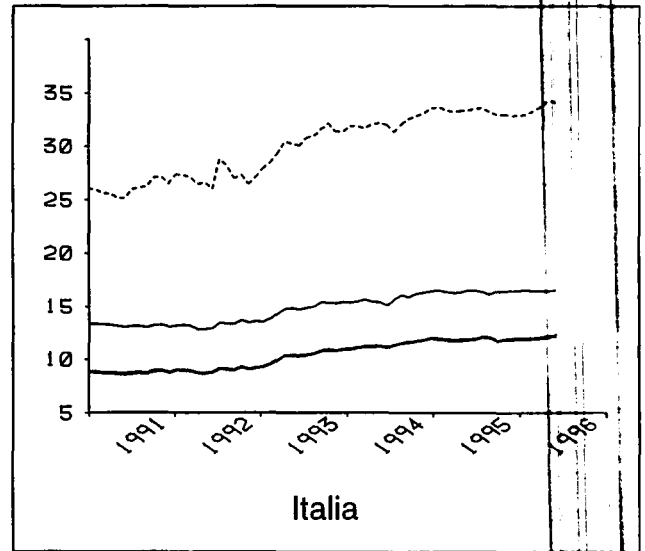
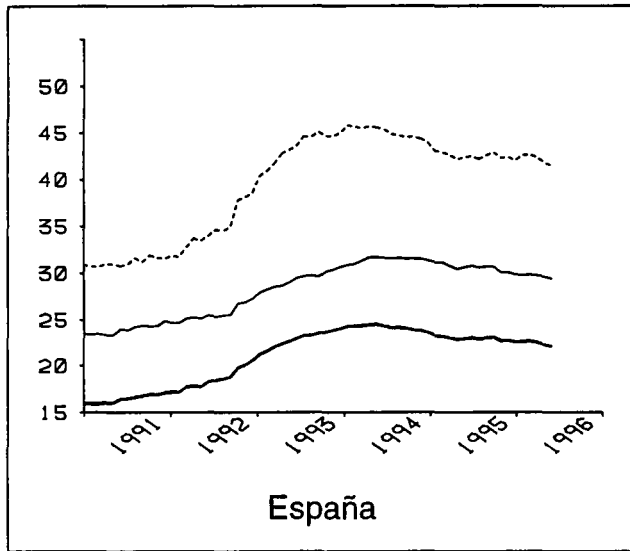
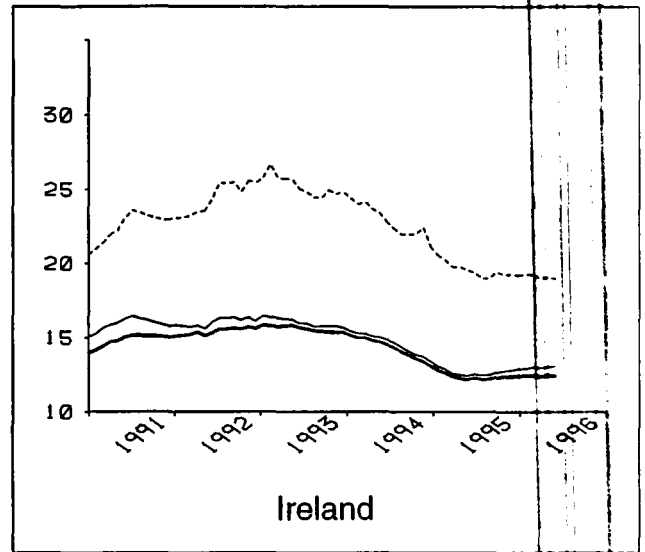
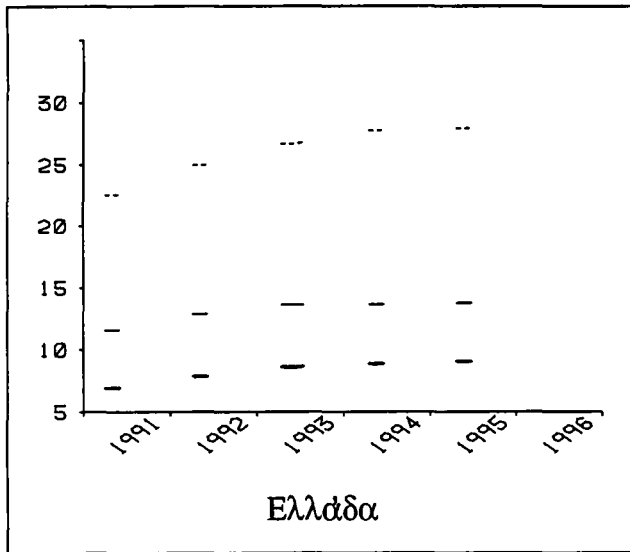


— Total

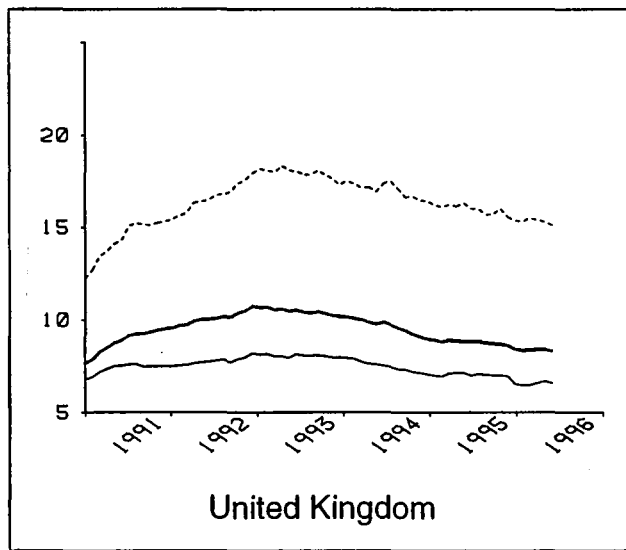
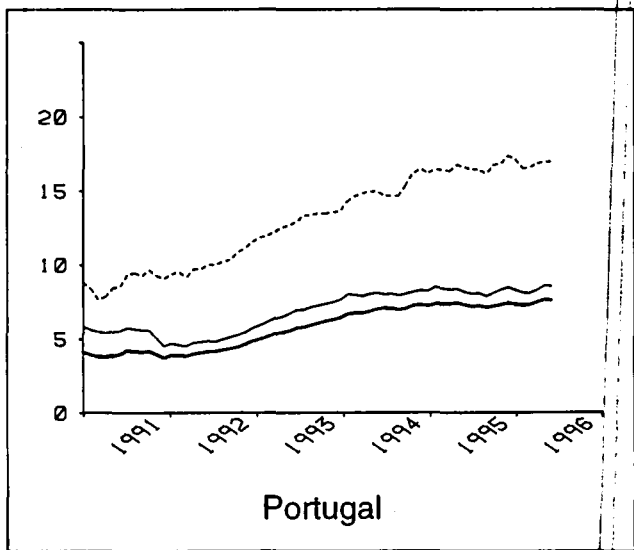
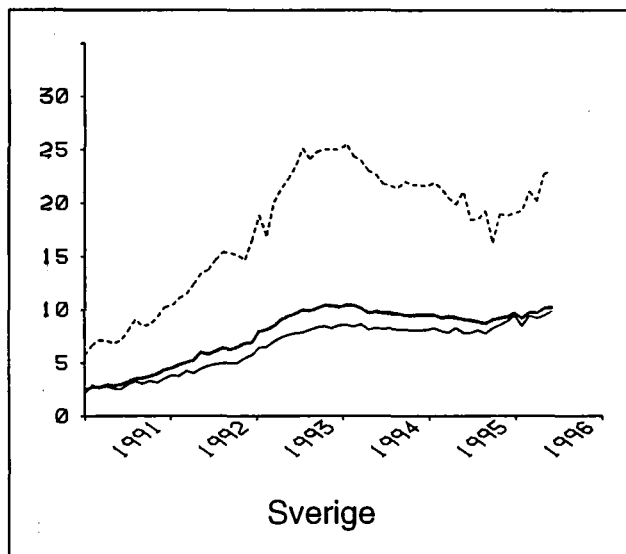
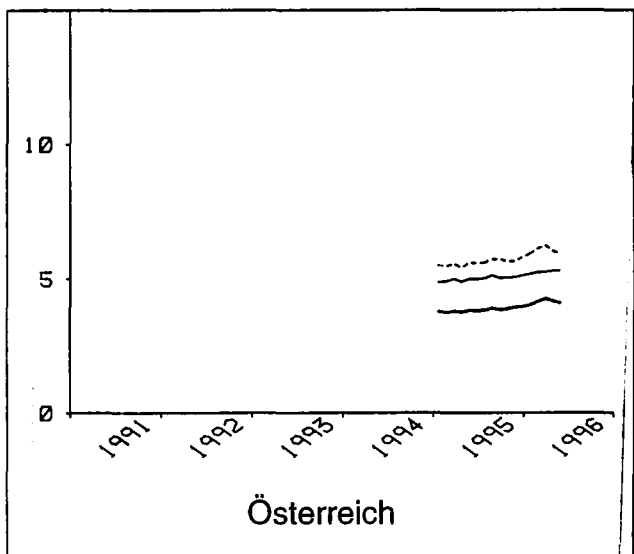
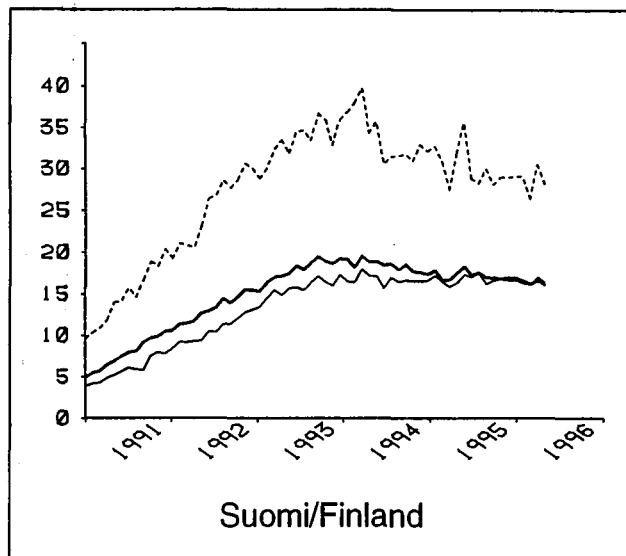
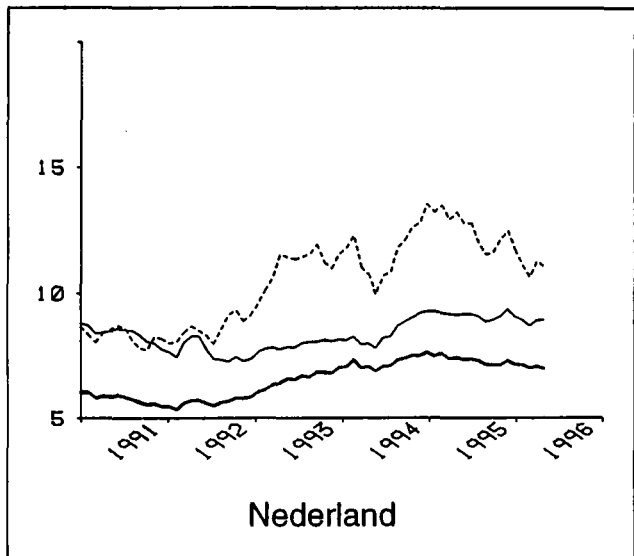
- - - Under 25 years

— Females

## Unemployment rates, seasonally adjusted (%)



# Unemployment rates, seasonally adjusted (%)



— Total

- - - Under 25 years

— Females



9 Unemployment rates, seasonally adjusted

(%)

	EUR 15	Belgique/ België	Danmark	Deutschland	Ελλάδα	España	France	Ireland	Italia	Luxembourg	Nederland	Österreich	Portugal	Suomi/ Finland	Sverige	United Kingdom	USA	Japan
<b>Total Males and females</b>																		
1994.05	11.3	10.2	8.3	8.6	8.9	24.5	12.5	14.7	11.2	3.3	6.9	:	7.0	18.9	9.8	9.8	6.1	2.8
1995.05	10.7	9.8	7.2	8.1	9.1	22.9	11.4	12.2	11.8	2.8	7.4	3.8	7.3	18.3	9.1	8.8	5.7	3.1
1996.01	10.8	10.1	6.5	8.7	:	22.6	11.6	12.4	11.9	2.9	7.1	4.0	7.3	16.6	9.2	8.3	5.7	3.4
1996.02	10.8	10.0	6.4	8.9	:	22.6	11.6	12.5	12.0	3.0	7.0	4.1	7.3	16.2	9.8	8.4	5.5	3.3
1996.03	10.9	9.9	6.4	9.0	:	22.5	11.6	12.4	12.0	3.0	7.1	4.3	7.5	16.7	9.7	8.4	5.6	3.2
1996.04	10.8	9.9	6.3	8.9	:	22.2	11.6	12.5	12.1	3.1	7.0	4.2	7.6	16.1	10.1	8.4	5.5	3.5
1996.05	10.8	9.8	6.1	8.9	:	22.1	11.6	12.4	:	3.1	:	4.1	7.6	:	10.2	8.3	5.6	3.5
<b>Males</b>																		
1994.05	10.2	8.1	7.5	7.4	6.0	20.2	10.7	14.5	8.8	2.9	6.2	:	6.1	20.5	11.3	11.4	6.1	2.7
1995.05	9.4	7.7	5.8	6.9	6.2	18.1	9.5	12.1	9.1	2.0	6.1	2.9	6.6	19.1	10.3	10.2	5.8	3.0
1996.01	9.5	7.9	5.3	7.7	:	18.1	9.7	12.2	9.2	2.0	5.9	3.1	6.5	16.9	9.9	9.8	5.6	3.4
1996.02	9.7	7.8	5.4	8.1	:	18.1	9.7	12.1	9.3	2.1	5.8	3.3	6.7	16.3	10.1	9.9	5.6	3.3
1996.03	9.7	7.8	5.4	8.2	:	17.9	9.7	12.0	9.4	2.1	5.7	3.5	6.8	16.3	10.2	9.8	5.7	3.2
1996.04	9.6	7.8	5.3	8.0	:	17.7	9.7	12.1	9.5	2.2	5.6	3.3	6.9	15.9	10.8	9.8	5.6	3.3
1996.05	9.6	7.7	5.0	8.0	:	17.5	9.8	12.0	:	2.2	:	3.1	6.8	:	10.6	9.7	5.6	3.6
<b>Females</b>																		
1994.05	12.8	13.1	9.3	10.3	13.7	31.7	14.6	15.0	15.4	4.1	7.8	:	8.1	17.1	8.3	7.6	6.1	3.0
1995.05	12.5	12.8	8.8	9.6	13.8	30.6	13.7	12.4	16.5	4.4	9.2	5.0	8.2	17.4	7.8	7.1	5.5	3.2
1996.01	12.4	13.1	7.8	10.0	:	29.8	13.8	12.9	16.5	4.6	8.9	5.2	8.1	16.2	8.5	6.5	5.8	3.5
1996.02	12.5	13.0	7.7	10.0	:	29.8	13.8	13.0	16.4	4.7	8.7	5.2	8.1	16.1	9.4	6.5	5.5	3.3
1996.03	12.5	13.0	7.6	10.1	:	29.7	13.8	13.0	16.4	4.6	8.9	5.3	8.3	17.0	9.2	6.6	5.4	3.1
1996.04	12.5	13.0	7.5	10.1	:	29.6	13.8	13.0	16.4	4.7	8.9	5.3	8.6	16.3	9.4	6.7	5.4	3.6
1996.05	12.5	12.8	7.3	10.1	:	29.4	13.9	13.1	:	4.8	:	5.3	8.6	:	9.8	6.6	5.6	3.4
<b>Under 25 years Males and females</b>																		
1994.05	22.1	24.7	10.8	8.9	27.7	45.6	29.7	23.4	32.2	7.5	9.9	:	14.9	35.7	22.7	16.9	12.5	5.6
1995.05	21.6	24.4	10.6	8.5	27.9	42.3	26.9	19.5	33.3	7.1	12.8	5.6	16.6	35.6	21.1	16.3	11.8	5.6
1996.01	21.3	24.7	9.4	9.3	:	42.6	27.0	19.3	33.0	7.4	11.1	5.9	16.5	29.1	19.3	15.3	13.0	7.2
1996.02	21.4	24.9	9.3	9.6	:	42.6	27.0	19.2	33.3	7.6	10.6	6.1	16.6	26.4	21.0	15.5	12.3	6.9
1996.03	21.5	24.9	9.2	9.6	:	42.3	26.9	19.0	33.7	7.5	11.3	6.2	16.8	30.5	20.2	15.4	12.2	6.3
1996.04	21.4	25.2	8.8	9.4	:	41.8	26.9	19.1	34.3	7.7	11.0	6.0	17.0	28.1	22.7	15.3	11.8	6.8
1996.05	21.3	25.1	8.5	9.4	:	41.5	27.1	19.0	:	7.7	:	5.9	17.0	:	23.0	15.1	12.2	7.0

# Unemployment rates, seasonally adjusted

(%)

	EUR 15	Belgique/ België	Danmark	Deutschland	Ελλάδα	España	France	Ireland	Italia	Luxembourg	Nederland	Österreich	Portugal	Suomi/ Finland	Sverige	United Kingdom	USA	Japan
<b>Under 25 years</b>																		
<b>Males</b>																		
1994.05	21.6	23.3	10.7	9.1	19.8	41.8	27.2	25.4	29.0	7.9	11.6	:	13.0	39.8	25.0	19.5	13.2	5.3
1995.05	20.3	22.4	8.2	8.6	19.4	36.8	23.1	20.8	29.0	6.0	12.5	4.4	15.5	37.6	24.1	18.4	12.2	5.6
1996.01	20.0	22.7	7.6	9.9	:	36.7	23.3	20.5	28.5	6.6	10.6	4.7	14.7	31.9	20.1	18.1	12.9	6.7
1996.02	20.2	22.8	7.7	10.4	:	36.8	23.4	20.3	28.9	6.9	10.5	4.9	14.9	27.0	21.5	18.3	13.0	7.1
1996.03	20.3	22.9	7.7	10.5	:	36.5	23.2	20.1	29.6	6.8	10.3	5.2	15.1	30.9	20.2	18.1	13.0	6.6
1996.04	20.2	23.2	7.3	10.2	:	35.9	23.2	20.1	30.0	7.1	9.5	4.9	15.1	30.7	24.0	18.0	12.6	7.0
1996.05	20.1	23.2	7.0	10.1	:	35.7	23.5	20.0	:	7.1	:	4.7	14.9	:	23.8	17.7	12.9	7.3
<b>Females</b>																		
1994.05	22.7	26.3	10.9	8.7	36.9	50.3	32.3	21.1	36.2	7.1	8.3	:	17.2	30.9	20.1	13.8	11.6	5.9
1995.05	23.2	26.7	13.1	8.4	37.7	48.8	30.9	18.0	38.8	8.2	13.1	6.9	18.0	33.3	17.9	13.8	11.4	5.6
1996.01	22.7	27.1	11.3	8.7	:	49.6	30.9	17.8	38.6	8.4	11.6	7.3	18.8	26.0	18.4	11.9	13.0	7.7
1996.02	22.8	27.2	11.1	8.7	:	49.5	30.8	17.9	38.8	8.5	10.8	7.4	18.7	25.6	20.7	12.1	11.4	6.7
1996.03	22.9	27.3	10.9	8.7	:	49.4	30.8	17.7	39.0	8.2	12.3	7.3	19.1	30.1	20.1	12.1	11.3	6.0
1996.04	22.8	27.5	10.5	8.6	:	48.9	30.6	17.8	39.6	8.4	12.6	7.2	19.3	25.4	21.3	12.0	10.8	6.6
1996.05	22.7	27.3	10.3	8.6	:	48.4	30.8	17.6	:	8.5	:	7.2	19.5	:	22.1	11.9	11.4	6.7
<b>25 years and over</b>																		
<b>Males</b>																		
1994.05	8.4	6.3	6.8	7.2	4.4	16.1	8.8	12.3	5.9	2.3	5.3	:	4.8	18.2	9.4	9.8	4.7	2.4
1995.05	7.8	6.1	5.3	6.7	4.7	14.8	8.0	10.3	6.2	1.5	4.9	2.7	5.0	16.7	8.5	8.6	4.5	2.7
1996.01	8.0	6.3	4.9	7.5	:	14.8	8.2	10.5	6.4	1.5	5.0	2.9	5.1	15.2	8.6	8.2	4.3	3.0
1996.02	8.1	6.2	4.9	7.8	:	14.8	8.2	10.5	6.5	1.5	5.0	3.0	5.2	15.1	8.7	8.3	4.2	2.8
1996.03	8.1	6.1	4.9	7.9	:	14.7	8.2	10.4	6.5	1.6	5.0	3.2	5.3	14.7	8.9	8.2	4.3	2.8
1996.04	8.1	6.1	4.8	7.7	:	14.5	8.2	10.5	6.6	1.6	4.9	3.0	5.4	14.1	9.2	8.2	4.2	2.9
1996.05	8.0	6.0	4.6	7.7	:	14.3	8.3	10.4	:	1.6	:	2.9	5.4	:	9.0	8.1	4.2	3.2
<b>Females</b>																		
1994.05	10.9	11.1	8.9	10.6	9.4	26.6	12.2	13.0	11.1	3.5	7.7	:	6.3	15.6	6.7	6.3	4.9	2.5
1995.05	10.6	10.9	7.8	9.8	9.6	25.8	11.5	10.7	12.0	3.7	8.2	4.6	6.5	15.3	6.4	5.8	4.4	2.7
1996.01	10.6	11.1	7.0	10.2	:	24.8	11.6	11.5	12.2	3.9	8.3	4.7	6.3	15.1	7.1	5.3	4.4	2.7
1996.02	10.6	11.0	6.9	10.2	:	24.8	11.6	11.6	12.0	3.9	8.2	4.8	6.3	15.0	7.9	5.3	4.3	2.7
1996.03	10.7	11.0	6.8	10.3	:	24.8	11.6	11.5	11.9	4.0	8.1	4.8	6.5	15.6	7.8	5.5	4.3	2.6
1996.04	10.7	10.9	6.7	10.3	:	24.8	11.6	11.6	11.9	4.0	8.0	4.9	6.8	15.3	7.9	5.6	4.3	3.1
1996.05	10.7	10.8	6.6	10.3	:	24.7	11.7	11.7	:	4.1	:	4.9	6.7	:	8.3	5.5	4.4	2.8

∞ Unemployment rates, not seasonally adjusted

(%)

	EUR 15	Belgique/ België	Danmark	Deutschland	Ελλάδα	España	France	Ireland	Italia	Luxembourg	Nederland	Österreich	Portugal	Suomi/ Finland	Sverige	United Kingdom	USA	Japan
<b>Total Males and females</b>																		
1994.05	10.9	9.5	8.0	8.4	8.9	24.0	11.9	14.4	11.1	3.1	6.7	:	6.8	18.1	9.3	9.5	5.9	2.8
1995.05	10.4	9.2	6.9	7.9	9.1	22.5	10.9	11.9	11.8	2.6	7.1	3.5	7.1	17.5	8.5	8.6	5.5	3.1
1996.01	11.2	10.2	7.1	9.4	:	22.9	12.0	12.7	12.2	3.3	7.3	4.9	7.5	17.8	9.7	8.5	6.3	3.5
1996.02	11.2	10.0	6.9	9.6	:	23.0	11.9	12.6	12.2	3.3	7.3	4.9	7.6	17.3	10.0	8.5	6.0	3.4
1996.03	11.0	9.7	6.8	9.3	:	22.8	11.6	12.4	12.3	3.1	7.2	4.5	7.6	17.1	9.7	8.4	5.8	3.5
1996.04	10.8	9.5	6.4	9.0	:	22.3	11.3	12.4	12.2	3.0	6.9	4.2	7.6	16.5	10.0	8.4	5.4	3.5
1996.05	10.5	9.2	5.8	8.7	:	21.8	11.1	12.1	:	2.9	:	3.8	7.4	:	9.6	8.1	5.4	3.5
<b>Males</b>																		
1994.05	9.9	7.5	7.2	7.2	6.0	19.8	10.2	14.3	8.7	2.6	6.1	:	6.0	19.6	10.9	11.2	5.9	2.7
1995.05	9.2	7.2	5.6	6.8	6.2	17.8	9.1	11.9	9.0	1.8	5.8	2.4	6.5	18.2	9.8	9.9	5.6	3.0
1996.01	10.0	8.2	6.1	8.6	:	18.5	10.2	12.4	9.3	2.3	6.1	4.7	6.7	18.4	10.4	10.1	6.5	3.4
1996.02	10.1	7.9	6.0	9.1	:	18.5	10.1	12.3	9.5	2.3	6.1	4.6	6.9	18.3	10.7	10.1	6.4	3.4
1996.03	9.9	7.6	6.0	8.7	:	18.3	9.9	12.1	9.6	2.2	6.0	4.0	6.9	17.4	10.6	9.8	6.3	3.5
1996.04	9.6	7.5	5.5	8.2	:	17.7	9.5	12.1	9.6	2.2	5.6	3.1	6.9	16.7	10.9	9.8	5.6	3.3
1996.05	9.3	7.2	4.8	7.7	:	17.3	9.4	11.8	:	2.0	:	2.6	6.8	:	10.1	9.5	5.4	3.6
<b>Females</b>																		
1994.05	12.4	12.3	9.0	10.0	13.7	31.1	14.0	14.5	15.2	3.8	7.5	:	7.7	16.4	7.5	7.2	5.8	3.1
1995.05	12.2	12.1	8.5	9.4	13.8	30.0	13.1	12.0	16.3	4.1	8.8	4.9	7.8	16.7	7.2	6.8	5.3	3.2
1996.01	12.7	13.2	8.3	10.4	:	30.1	14.2	13.0	16.9	5.1	9.0	5.3	8.4	17.2	8.9	6.5	6.0	3.6
1996.02	12.6	12.9	7.9	10.3	:	30.1	14.0	13.1	16.8	5.0	9.0	5.2	8.4	16.3	9.4	6.4	5.5	3.5
1996.03	12.5	12.6	7.7	10.2	:	30.1	13.7	12.8	16.7	4.8	9.0	5.2	8.4	16.7	8.7	6.5	5.3	3.4
1996.04	12.4	12.4	7.4	10.1	:	29.6	13.4	12.8	16.5	4.6	8.7	5.7	8.4	16.3	9.0	6.6	5.1	3.7
1996.05	12.2	12.1	7.1	9.9	:	29.0	13.3	12.6	:	4.5	:	5.2	8.3	:	9.0	6.3	5.4	3.5
<b>Under 25 years Males and females</b>																		
1994.05	21.0	20.9	10.1	8.3	27.7	44.4	26.6	22.6	31.9	6.4	9.4	:	14.4	32.9	20.9	15.9	13.0	5.8
1995.05	20.5	20.8	9.9	7.9	27.9	41.2	24.0	18.8	33.1	6.2	12.1	5.1	16.0	32.7	19.7	15.4	12.3	5.7
1996.01	21.5	25.4	10.2	9.9	:	43.3	26.9	19.6	33.1	8.7	11.4	6.9	17.3	32.1	21.5	15.0	13.8	6.6
1996.02	21.6	24.5	10.0	10.5	:	43.5	26.5	19.4	33.5	8.4	11.1	6.7	17.3	27.0	22.5	15.1	13.1	7.0
1996.03	21.4	23.3	9.8	10.2	:	43.1	25.7	18.9	33.9	7.8	11.2	6.3	17.3	33.8	20.9	15.0	12.5	8.1
1996.04	20.9	22.6	9.0	9.4	:	41.8	24.6	18.8	34.1	7.4	10.3	6.3	17.1	31.1	23.1	14.6	11.6	7.2
1996.05	20.3	21.4	8.0	8.7	:	40.8	24.1	18.2	:	6.7	:	5.4	16.8	:	21.6	14.2	12.6	7.1



# Unemployment rates, not seasonally adjusted

(%)

	EUR 15	Belgique/ België	Danmark	Deutschland	Ελλάδα	España	France	Ireland	Italia	Luxembourg	Nederland	Österreich	Portugal	Suomi/ Finland	Sverige	United Kingdom	USA	Japan
<b>Under 25 years</b>																		
<b>Males</b>																		
1994.05	20.6	19.5	10.1	8.6	19.8	40.7	24.3	24.5	28.9	6.9	11.0	:	12.7	37.0	23.6	18.8	13.8	5.2
1995.05	19.4	18.9	7.7	8.0	19.4	35.8	20.5	20.1	29.1	5.5	11.9	3.6	15.1	34.5	22.6	17.8	12.6	5.4
1996.01	20.4	23.6	8.6	10.8	:	37.6	23.7	20.9	28.5	8.0	11.3	6.9	15.3	34.2	22.5	17.8	14.6	6.1
1996.02	20.7	22.7	8.6	11.9	:	37.9	23.4	20.7	28.9	7.7	10.8	6.7	15.5	28.9	23.1	17.9	14.5	7.0
1996.03	20.6	21.5	8.5	11.5	:	37.3	22.6	20.2	29.7	7.4	11.1	5.9	15.5	38.1	22.3	17.9	14.1	8.5
1996.04	19.8	20.8	7.7	10.3	:	36.0	21.4	20.1	30.0	7.0	9.3	4.7	15.3	33.6	24.9	17.5	12.7	7.0
1996.05	19.3	19.7	6.6	9.5	:	35.2	20.8	19.3	:	6.4	:	3.9	14.9	:	22.6	17.1	13.2	7.0
<b>Females</b>																		
1994.05	21.4	22.6	10.2	8.0	36.9	49.0	29.0	20.3	35.7	5.9	7.8	:	16.3	28.0	18.0	12.4	12.1	6.4
1995.05	21.9	23.0	12.2	7.7	37.7	47.6	27.7	17.2	38.3	6.9	12.2	6.8	17.1	30.7	16.6	12.5	11.9	6.1
1996.01	22.8	27.5	12.0	8.9	:	50.0	30.2	18.0	38.9	9.5	11.6	6.9	19.8	29.8	20.4	11.6	12.8	7.2
1996.02	22.7	26.6	11.7	8.9	:	50.1	29.7	18.0	39.3	9.2	11.3	6.7	19.7	25.0	21.9	11.7	11.4	7.0
1996.03	22.4	25.4	11.2	8.6	:	49.9	28.9	17.3	39.3	8.3	11.3	6.8	19.6	28.8	19.3	11.6	10.8	7.6
1996.04	22.0	24.6	10.5	8.3	:	48.7	28.0	17.3	39.1	7.7	11.3	8.0	19.4	28.4	21.4	11.1	10.3	7.3
1996.05	21.5	23.5	9.6	7.8	:	47.5	27.6	16.9	:	7.1	:	7.1	19.1	:	20.5	10.8	11.9	7.2
<b>25 years and over</b>																		
<b>Males</b>																		
1994.05	8.3	6.2	6.6	7.0	4.4	15.9	8.7	12.2	5.7	2.1	5.2	:	4.8	17.6	9.2	9.7	4.4	2.3
1995.05	7.7	5.9	5.1	6.6	4.7	14.6	7.9	10.2	6.1	1.4	4.8	2.2	5.0	16.2	8.1	8.5	4.2	2.7
1996.01	8.5	6.4	5.5	8.3	:	15.2	8.7	10.7	6.7	1.7	5.2	4.3	5.2	16.9	8.9	8.6	5.1	3.1
1996.02	8.6	6.3	5.5	8.7	:	15.1	8.7	10.7	6.7	1.7	5.2	4.3	5.4	17.2	9.3	8.6	4.9	2.9
1996.03	8.4	6.1	5.5	8.4	:	14.9	8.5	10.5	6.7	1.6	5.1	3.6	5.4	15.2	9.2	8.3	4.9	2.8
1996.04	8.1	6.0	5.1	7.9	:	14.5	8.3	10.5	6.7	1.6	4.9	2.9	5.4	14.9	9.4	8.3	4.4	2.8
1996.05	7.9	5.9	4.5	7.5	:	14.2	8.1	10.3	:	1.5	:	2.4	5.3	:	8.7	8.1	3.9	3.1
<b>Females</b>																		
1994.05	10.8	10.9	8.7	10.4	9.4	26.3	12.0	12.7	11.1	3.4	7.4	:	6.1	15.2	6.1	6.2	4.6	2.4
1995.05	10.4	10.7	7.7	9.6	9.6	25.6	11.3	10.4	12.0	3.5	8.0	4.5	6.3	15.0	5.9	5.7	4.0	2.7
1996.01	10.9	11.2	7.5	10.6	:	25.1	12.1	11.6	12.6	4.2	8.3	4.9	6.5	15.9	7.4	5.4	4.8	3.0
1996.02	10.9	11.0	7.0	10.5	:	25.1	12.0	11.6	12.4	4.2	8.4	4.9	6.5	15.4	7.8	5.4	4.3	2.9
1996.03	10.8	10.8	6.8	10.4	:	25.2	11.8	11.5	12.3	4.2	8.4	4.9	6.5	15.5	7.5	5.5	4.2	2.7
1996.04	10.7	10.8	6.7	10.3	:	24.9	11.6	11.5	12.1	4.0	8.0	5.2	6.6	15.0	7.5	5.7	4.1	3.0
1996.05	10.6	10.6	6.5	10.2	:	24.5	11.5	11.4	:	4.0	:	4.8	6.5	:	7.6	5.4	4.1	2.8

## Unemployment rates, annual averages

(%)

	EUR 15	Belgique/ België	Danmark	Deutschland	Ελλάδα	España	France	Ireland	Italia	Luxembourg	Nederland	Österreich	Portugal	Suomi/ Finland	Sverige	United Kingdom	USA	Japan
<b>Total Males and females</b>																		
1989	:	7.5	7.4	:	6.7	17.2	9.3	14.7	10.0	1.8	6.9	:	4.9	3.5	1.6	7.3	5.3	2.3
1990	:	6.7	7.7	:	6.4	16.2	8.9	13.4	9.1	1.7	6.2	:	4.6	3.4	1.8	7.0	5.5	2.1
1991	8.2	6.6	8.4	5.6	7.0	16.4	9.5	14.8	8.8	1.7	5.8	:	4.0	7.6	3.3	8.8	6.7	2.1
1992	9.3	7.3	9.2	6.6	7.9	18.5	10.4	15.4	9.0	2.1	5.6	:	4.2	13.1	5.8	10.1	7.4	2.2
1993	10.7	8.9	10.1	7.9	8.6	22.8	11.7	15.6	10.3	2.7	6.6	:	5.7	17.9	9.5	10.4	6.8	2.5
1994	11.2	10.0	8.2	8.4	8.9	24.1	12.3	14.3	11.4	3.2	7.2	:	7.0	18.4	9.8	9.6	6.1	2.9
1995	10.7	9.9	7.1	8.2	9.1	22.9	11.5	12.4	11.9	2.9	7.3	3.8	7.3	17.2	9.2	8.8	5.6	3.1
<b>Males</b>																		
1989	:	4.7	6.7	:	4.1	12.9	7.0	14.2	7.1	1.3	4.9	:	3.5	3.6	1.6	7.4	5.2	2.2
1990	:	4.1	7.0	:	3.9	11.9	6.7	12.8	6.4	1.2	4.3	:	3.2	4.0	1.8	7.4	5.6	2.0
1991	6.9	4.3	7.5	4.6	4.4	12.3	7.4	14.2	6.2	1.3	4.1	:	2.8	9.3	3.6	9.9	7.0	2.0
1992	8.1	5.3	8.3	5.2	5.0	14.5	8.3	15.1	6.5	1.7	4.3	:	3.6	15.5	6.9	11.9	7.8	2.1
1993	9.7	6.9	9.6	6.6	5.7	19.1	10.0	15.4	7.8	2.2	5.6	:	4.8	19.8	11.1	12.3	7.1	2.4
1994	10.0	7.9	7.3	7.2	6.0	19.7	10.4	14.1	8.9	2.7	6.4	:	6.1	19.9	11.2	11.3	6.2	2.8
1995	9.4	7.8	5.7	7.1	6.2	18.2	9.5	12.2	9.2	2.0	6.0	2.9	6.5	17.6	10.1	10.1	5.6	3.1
<b>Females</b>																		
1989	:	11.9	8.2	:	11.1	25.3	12.3	15.5	15.1	2.7	10.2	:	6.9	3.3	1.7	7.1	5.4	2.3
1990	:	10.6	8.4	:	10.8	24.1	11.8	14.6	13.8	2.5	9.1	:	6.2	2.8	1.8	6.6	5.4	2.2
1991	10.0	10.0	9.5	7.0	11.8	23.9	12.2	15.9	13.2	2.3	8.4	:	5.4	5.7	2.9	7.4	6.3	2.2
1992	10.9	10.2	10.2	8.5	13.0	25.6	13.0	16.0	13.2	2.8	7.6	:	5.0	10.5	4.7	7.8	6.9	2.2
1993	12.2	11.8	10.8	9.6	13.6	29.3	13.8	16.0	14.8	3.4	7.9	:	6.8	15.7	7.7	8.1	6.5	2.6
1994	12.7	12.9	9.3	10.1	13.7	31.4	14.5	14.6	15.7	4.1	8.5	:	8.0	16.7	8.2	7.5	6.0	3.0
1995	12.5	12.9	8.7	9.8	13.8	30.5	13.8	12.6	16.4	4.4	9.1	5.0	8.2	16.7	8.2	7.0	5.6	3.2
<b>Under 25 years Males and females</b>																		
1989	:	16.2	11.2	:	22.5	34.2	20.0	20.3	29.3	4.2	9.8	:	11.1	6.5	3.9	10.4	10.9	4.5
1990	:	15.3	11.4	:	21.5	32.3	19.3	19.4	27.4	3.8	8.6	:	10.0	6.7	4.5	10.8	11.1	4.3
1991	16.2	14.9	11.6	5.9	22.9	31.1	21.5	22.4	26.0	3.2	8.3	:	8.8	14.5	7.8	14.3	13.4	4.4
1992	18.0	16.2	12.7	6.4	25.1	34.6	23.3	24.4	27.1	4.0	8.5	:	10.1	25.2	13.6	16.7	14.2	4.5
1993	21.3	21.8	13.8	7.9	26.8	43.4	27.3	25.2	30.4	5.4	11.1	:	12.9	33.3	22.6	17.9	13.3	5.1
1994	22.0	24.2	11.0	8.7	27.7	45.0	29.0	22.8	32.3	7.3	11.7	:	15.1	33.6	22.6	17.0	12.5	5.5
1995	21.4	24.4	10.1	8.8	27.9	42.5	27.0	19.5	33.2	7.1	12.5	5.6	16.6	29.9	19.4	15.9	12.1	6.1

# Unemployment rates, annual averages

(%)

	EUR 15	Belgique/ België	Danmark	Deutschland	Ελλάδα	España	France	Ireland	Italia	Luxembourg	Nederland	Österreich	Portugal	Suomi/ Finland	Sverige	United Kingdom	USA	Japan
<b>Under 25 years</b>																		
<b>Males</b>																		
1989	:	11.8	10.7	:	15.4	27.6	16.3	21.8	24.7	3.5	8.2	:	9.0	6.6	3.9	11.2	11.4	4.8
1990	:	11.0	11.3	:	14.4	26.2	15.8	20.4	23.3	3.2	7.5	:	8.4	8.1	4.6	11.9	11.6	4.5
1991	15.0	11.9	11.1	5.4	16.0	25.7	18.1	23.7	22.6	3.3	7.4	:	6.8	17.7	8.5	16.6	14.3	4.7
1992	17.2	14.3	12.2	5.8	17.4	29.9	20.1	25.8	23.4	4.2	8.5	:	9.1	29.2	15.9	19.7	15.3	4.7
1993	20.8	20.7	13.4	7.8	18.9	40.0	25.1	27.0	26.6	5.2	12.0	:	10.8	36.9	26.0	21.0	14.3	4.9
1994	21.4	22.6	10.6	8.8	19.7	40.9	26.2	24.7	29.0	7.5	12.5	:	13.5	36.9	25.3	19.7	13.2	5.7
1995	20.0	22.3	8.1	8.8	19.4	36.9	23.2	20.8	29.0	6.4	11.7	4.4	15.1	31.1	20.6	18.1	12.5	6.2
<b>Females</b>																		
1989	:	21.2	11.6	:	30.9	42.3	23.9	18.6	34.8	5.0	11.4	:	13.6	6.3	3.8	9.4	10.4	4.3
1990	:	19.9	11.5	:	29.9	39.7	23.0	18.2	32.4	4.6	9.6	:	11.9	5.2	4.5	9.6	10.6	4.1
1991	17.5	18.0	12.2	6.3	31.3	37.9	25.0	20.9	30.3	3.1	9.1	:	11.1	11.1	7.1	11.6	12.4	4.2
1992	19.0	18.2	13.3	7.0	34.3	40.6	26.8	22.8	31.7	3.7	8.6	:	11.2	20.9	11.1	13.0	13.0	4.2
1993	21.8	23.0	14.1	8.1	36.1	47.6	29.7	23.0	35.1	5.6	10.1	:	15.3	29.2	19.0	14.2	12.2	5.2
1994	22.8	26.0	11.6	8.6	37.0	50.1	32.0	20.6	36.4	7.2	11.0	:	17.0	29.9	19.8	13.7	11.6	5.4
1995	23.0	26.8	12.4	8.6	37.7	49.0	31.0	17.9	38.5	7.9	13.2	6.9	18.6	28.5	18.1	13.3	11.6	6.0
<b>25 years and over</b>																		
<b>Males</b>																		
1989	:	3.8	5.7	:	2.6	9.8	5.6	12.5	4.0	1.0	4.2	:	2.2	3.1	1.2	6.5	3.9	1.9
1990	:	3.3	6.1	:	2.6	9.0	5.4	11.1	3.7	1.0	3.7	:	2.1	3.4	1.3	6.3	4.4	1.7
1991	5.5	3.5	6.7	4.5	2.9	9.6	6.0	12.1	3.4	1.0	3.4	:	2.0	8.1	2.7	8.4	5.7	1.7
1992	6.5	4.2	7.5	5.1	3.4	11.4	6.8	12.8	3.8	1.4	3.5	:	2.6	13.6	5.5	10.1	6.4	1.8
1993	7.9	5.3	8.8	6.4	4.0	15.0	8.2	12.9	4.9	1.9	4.5	:	3.7	17.7	9.0	10.5	5.8	2.1
1994	8.3	6.2	6.6	7.0	4.4	15.8	8.6	11.9	5.9	2.1	5.3	:	4.8	17.9	9.3	9.6	4.8	2.5
1995	7.9	6.1	5.2	6.9	4.6	14.8	8.0	10.4	6.3	1.5	5.0	2.7	5.0	16.1	8.7	8.6	4.3	2.7
<b>Females</b>																		
1989	:	10.1	7.3	:	7.1	19.1	10.1	14.1	9.7	2.1	9.8	:	5.1	2.8	1.2	6.3	4.2	2.0
1990	:	8.9	7.7	:	6.8	18.7	9.8	13.1	9.0	2.0	8.9	:	4.8	2.4	1.3	5.8	4.3	1.8
1991	8.3	8.6	8.8	7.1	7.8	19.3	10.0	13.9	8.8	2.1	8.1	:	4.2	4.9	2.1	6.3	5.1	1.8
1992	9.2	8.9	9.5	8.8	8.8	21.1	10.8	13.6	8.8	2.6	7.3	:	3.6	9.1	3.6	6.5	5.7	1.9
1993	10.3	10.0	10.0	9.9	9.3	24.1	11.5	13.6	10.3	2.9	7.3	:	5.2	13.9	6.0	6.6	5.4	2.2
1994	10.9	11.0	8.8	10.3	9.4	26.3	12.1	12.6	11.5	3.5	7.8	:	6.3	15.1	6.6	6.1	4.9	2.5
1995	10.6	11.0	7.8	9.9	9.6	25.7	11.5	11.1	11.9	3.7	8.0	4.6	6.5	15.4	6.8	5.7	4.4	2.7

Number of unemployed, annual averages

1000

	EUR 15	Belgique/ België	Danmark	Deutschland	Ελλάδα	España	France	Ireland	Italia	Luxembourg	Nederland	Österreich	Portugal	Suomi/ Finland	Sverige	United Kingdom	USA	Japan
<b>Total Males and females</b>																		
1989	:	290.5	209.9	:	262.3	2544.5	2238.2	189.5	2311.5	2.9	451.4	:	228.1	88.9	73.7	2081.9	6519.8	1418.6
1990	:	260.6	221.0	:	254.7	2435.5	2152.7	175.7	2123.9	2.7	413.2	:	213.2	88.0	82.7	2022.4	6873.7	1343.3
1991	13627.4	263.0	242.9	2195.2	276.3	2476.7	2323.3	197.5	2064.3	2.8	395.1	:	190.9	193.0	148.1	2528.4	8426.1	1359.2
1992	15345.5	295.4	265.8	2580.0	317.5	2810.0	2557.6	209.5	2097.5	3.6	394.4	:	199.3	328.2	260.4	2891.1	9384.3	1422.5
1993	17799.3	365.5	289.1	3090.3	351.5	3502.6	2908.8	215.1	2345.6	4.5	467.1	:	270.3	443.7	414.9	2979.0	8733.8	1656.7
1994	18498.6	416.2	228.8	3299.3	369.5	3727.4	3049.9	202.2	2570.8	5.4	524.5	:	332.6	455.8	426.2	2744.0	7996.5	1920.8
1995	17855.7	416.2	198.2	3209.0	380.1	3574.0	2850.0	177.7	2683.0	4.8	534.8	146.7	346.5	429.6	404.4	2500.6	7404.3	2099.2
<b>Males</b>																		
1989	:	111.3	102.9	:	102.1	1250.5	943.4	122.7	1045.7	1.4	194.9	:	91.6	48.1	37.6	1214.3	3517.1	828.3
1990	:	97.8	108.7	:	98.7	1162.0	907.5	111.3	954.7	1.3	176.2	:	85.7	54.0	43.2	1206.4	3799.0	773.3
1991	6744.3	104.0	115.7	1031.2	110.7	1197.3	1004.1	124.4	934.2	1.4	168.3	:	75.4	124.1	84.8	1615.6	4817.3	771.7
1992	7802.4	126.6	127.9	1163.0	126.9	1402.7	1132.6	131.8	964.6	1.8	179.7	:	95.0	203.4	160.7	1927.6	5379.7	820.0
1993	9327.0	166.4	144.9	1481.7	146.2	1849.1	1364.7	134.1	1116.6	2.4	237.9	:	125.8	259.4	253.9	1976.5	4932.4	947.5
1994	9598.0	193.6	109.7	1609.2	157.0	1900.9	1416.6	125.2	1260.4	2.8	270.6	:	160.7	259.4	254.7	1813.3	4367.7	1123.3
1995	9050.0	191.4	87.6	1575.4	161.6	1750.7	1290.5	109.2	1302.9	2.1	256.4	63.3	170.5	231.3	231.2	1625.7	3983.0	1230.0
<b>Females</b>																		
1989	:	179.2	107.0	:	160.2	1293.9	1294.8	66.7	1265.8	1.5	256.4	:	136.5	40.7	36.1	867.7	3002.8	590.3
1990	:	162.8	112.3	:	156.0	1273.5	1245.2	64.4	1169.2	1.4	237.1	:	127.5	34.0	39.6	816.0	3074.7	570.0
1991	6883.1	159.0	127.2	1164.1	165.6	1279.3	1319.1	73.1	1130.1	1.4	226.8	:	115.5	68.9	63.3	912.8	3608.8	587.5
1992	7543.1	168.8	137.9	1417.0	190.5	1407.4	1425.0	77.8	1132.9	1.7	214.6	:	104.3	124.8	99.7	963.5	4004.7	602.5
1993	8472.3	199.1	144.1	1608.6	205.3	1653.4	1544.1	81.0	1228.9	2.1	229.2	:	144.5	184.4	161.0	1002.5	3801.3	709.2
1994	8900.6	222.6	119.0	1690.1	212.5	1826.5	1633.3	77.0	1310.4	2.6	253.9	:	171.9	196.3	171.5	930.6	3628.8	797.5
1995	8805.7	224.8	110.6	1633.6	218.5	1823.3	1559.4	68.4	1380.1	2.7	278.4	83.4	176.1	198.3	173.3	874.9	3421.3	869.2
<b>Under 25 years Males and females</b>																		
1989	:	83.4	64.0	:	119.2	1053.4	688.8	60.2	1156.4	1.1	128.5	:	101.8	23.7	28.9	639.1	2411.0	365.8
1990	:	75.7	63.1	:	115.5	976.4	642.2	57.0	1046.0	0.9	113.8	:	90.7	24.1	33.1	637.3	2369.6	361.7
1991	4414.6	73.4	63.1	349.4	121.5	921.0	678.8	66.0	1018.5	0.8	109.3	:	73.8	47.8	53.8	799.6	2766.6	385.8
1992	4693.4	78.7	65.5	353.5	132.5	999.9	709.1	69.3	1003.8	1.0	113.0	:	80.2	75.3	84.2	892.2	2898.8	399.2
1993	5274.1	102.5	68.5	414.5	142.4	1231.5	797.2	70.9	1035.3	1.2	143.9	:	97.7	93.4	125.2	911.4	2717.0	455.0
1994	5221.5	114.1	54.5	427.9	143.2	1244.0	798.4	63.9	1042.6	1.6	148.9	:	112.5	87.7	120.6	826.9	2692.6	499.2
1995	4927.4	111.5	51.9	403.6	141.6	1148.6	713.7	53.7	1057.4	1.4	157.4	34.0	116.3	77.4	102.3	756.4	2590.3	539.2

## Methodological notes

- The Eurostat unemployment rates are calculated according to the recommendations of the 13<sup>th</sup> International Conference of Labour Statisticians organised by the International Labour Office (ILO) in 1982.  
Unemployed persons are those persons aged 15 years and over who
  - are without work
  - are available to start work within the next two weeks
  - and have actively sought employment at some time during the previous four weeks.
- The unemployment estimates are based on the results of the European Community Labour Force Survey. It is carried out in the spring of each year. The use of the same definitions and concepts throughout the EU ensures comparability of the results between Member States.
- The **unemployment rate** is the number of unemployed as a percentage of the labour force (people living in collective households are excluded). The labour force is the total of the employed and the unemployed.  
Monthly estimates of the **number of unemployed** are derived by interpolating/extrapolating each year's Community Labour Force Survey results using the results of the national labour force surveys (see table A) and monthly indicators of unemployment (see table B).  
Monthly estimates of **employment** are obtained by
  - interpolating/extrapolating linearly the annual Community LFS results (Belgium, Denmark, Germany, Greece, France, Ireland, Luxembourg, Netherlands)
  - interpolating/extrapolating linearly the results of the national quarterly labour force surveys after adjustment to the Community LFS (Spain, Italy, Portugal, United Kingdom)
  - using the results of the national monthly labour force surveys (Finland, Sweden, USA, Japan).
- Estimates are made separately for males under 25, females under 25, males aged 25 years and over, and females aged 25 years and over. Totals are obtained by adding up these four basic categories.
- The figures for the four basic categories are seasonally adjusted using the multiplicative version of the X-11 method of the US Bureau of the Census.  
The reliability of the figures is adversely affected if deseasonalisation is performed on short series (such as Germany since the reunification) or where breaks occur (such as Sweden since 1993).
- From 1992, in some member States, the more restrictive application of the ILO guidelines introduces a break in the series. In such cases, no estimates are provided for the period before 1992.

**Table A: Reference period of the last surveys used**

Country	Community labour force surveys	National labour force surveys
Belgium	1995Q2	-
Denmark	1995Q2	-
Germany	1995Q2	-
Greece	1995Q2	-
Spain	1995Q2	1996Q1
France	1995Q2	-
Ireland	1995Q2	-
Italy	1995Q2	1996Q2
Luxembourg	1995Q2	-
Netherlands	1995Q2	-
Austria	1995Q2	1995Q1
Portugal	1995Q2	1996Q1
Finland	-	1996APR
Sweden	-	1996MAY
United Kingdom	1995Q2	1996Q1

NB: 1994Q2 = 2<sup>nd</sup> quarter of 1994

## **Table B: Monthly indicators of unemployment.**

**BELGIUM:** All persons in the following categories registered at employment offices: wholly unemployed persons in receipt of benefit, other unemployed persons compulsory registered and voluntarily registered persons without work.

Series provided by the Office National de l'Emploi.

**DENMARK:** Persons seeking full-time or part-time employment, whether or not they are members of an unemployment insurance fund.

Series provided by Danmarks Statistik.

**GERMANY:** Unemployed persons registered at public employment offices and seeking work as employees for at least 18 hours per week.

Series provided by the Bundesanstalt für Arbeit.

**GREECE:** No monthly indicator

**SPAIN:** Unemployed persons registered at public employment offices and seeking work as employees for 20 hours or more per week.

Series provided by the Ministerio de Trabajo y Seguridad Social.

**FRANCE:** Unemployed persons registered at the Agence de l'Emploi and seeking permanent full-time employment (demandeurs de catégorie 1).

Series provided by the Ministère du Travail, de l'Emploi et de la Formation Professionnelle.

**IRELAND:** Claimants for unemployment benefit, applicants for unemployment assistance and others seeking work who are registered with the employment services of the Department of Social Welfare. Excluded are persons seeking part-time employment.

Series provided by the Central Statistics Office.

**ITALY:** Persons without work, persons seeking their first job, persons working part-time for less than 20 hours per week and workers on a fixed-term contract of not more than 4 months in any 12-month period, who are looking for a different job.

Series provided by the Ministero del Lavoro e della Previdenza Sociale.

**LUXEMBURG:** Unemployed persons registered at employment offices and seeking work as employees for at least 20 hours per week.

Series provided by the Administration de l'Emploi.

**NETHERLANDS:** Persons registered at employment offices, between the ages of 16 and 64 years,

- who are without work or with work less than 12 hours a week and
- who are immediately available for paid employment for at least 12 hours a week or who found a job and will start working for at least 12 hours a week.

Series provided by the CBS.

**AUSTRIA:** No monthly indicator.

**PORTUGAL:** Persons registered at employment offices who are available for work within 30 days after registration.

Series provided by the Instituto de Emprego e Formação Profissional.

**FINLAND:** Number of unemployed in the monthly labour force survey.

**SWEDEN:** Number of unemployed in the monthly labour force survey.

**UNITED KINGDOM:** Persons seeking full-time work and claiming unemployment benefit because they are out of work.

Series provided by the Department of Employment.

**BELGIQUE / BELGIË**

**Moniteur belge/  
Belgisch Staatsblad**  
Rue de Louvain 42/Leuvenseweg 42  
B-1000 Bruxelles/B-1000 Brussel  
Tél. (02) 512 00 26  
Fax (02) 511 01 84

**Jean De Lannoy**  
Avenue du Roi 202/Koningslaan 202  
B-1060 Bruxelles/B-1060 Brussel  
Tél. (02) 538 51 69  
Fax (02) 538 08 41

Autres distributeurs/  
Overige verkooppunten:

**Librairie européenne/  
Europese boekhandel**  
Rue de la Loi 244/Wetstraat 244  
B-1040 Bruxelles/B-1040 Brussel  
Tél. (02) 231 04 35  
Fax (02) 735 08 60

Document delivery:

**Credoc**  
Rue de la Montagne 34/Bergstraat 34  
Boite 11/Bus 11  
B-1000 Bruxelles/B-1000 Brussel  
Tél. (02) 511 69 41  
Fax (02) 513 31 95

**DANMARK**

**J. H. Schultz Information A/S**  
Herstedvang 10-12  
DK-2620 Albertslund  
Tlf. 43 63 23 00  
Fax (Sales) 43 63 19 69  
Fax (Management) 43 63 19 49

**DEUTSCHLAND**

**Bundesanzeiger Verlag**  
Postfach 10 05 34  
D-50445 Köln  
Tel. (02 21) 20 29-0  
Fax (02 21) 2 02 92 78

**GREECE/ΕΛΛΑΔΑ**

**G.C. Eleftheroudakis SA**  
International Bookstore  
Nikis Street 4  
GR-10563 Athens  
Tel. (01) 322 63 23  
Fax 323 98 21

**ESPAÑA**

**Mundi-Prensa Libros, SA**  
Castelló, 37  
E-28001 Madrid  
Tel. (91) 431 33 99 (Libros)  
431 32 22 (Suscripciones)  
435 36 37 (Dirección)  
Fax (91) 575 39 98

**Boletín Oficial del Estado**

Trafalgar, 27-29  
E-28071 Madrid  
Tel. (91) 538 22 95  
Fax (91) 538 23 49

**Sucursal:**

**Librería Internacional AEDOS**

Consejo de Ciento, 391  
E-08009 Barcelona  
Tel. (93) 488 34 92  
Fax (93) 487 76 59

**Librería de la Generalitat  
de Catalunya**

Rambla dels Estudis, 118 (Palau Moja)  
E-08002 Barcelona  
Tel. (93) 302 68 35  
Tel. (93) 302 64 62  
Fax (93) 302 12 99

**FRANCE**

**Journal officiel  
Service des publications  
des Communautés européennes**  
26, rue Desaix  
F-75727 Paris Cedex 15  
Tél. (1) 40 58 77 01/31  
Fax (1) 40 58 77 00

**IRELAND**

**Government Supplies Agency**  
4-5 Harcourt Road  
Dublin 2  
Tel. (1) 66 13 111  
Fax (1) 47 52 760

**ITALIA**

**Licosa SpA**  
Via Duca di Calabria 1/1  
Casella postale 552  
I-50125 Firenze  
Tel. (055) 64 54 15  
Fax 64 12 57

**GRAND-DUCHÉ DE LUXEMBOURG**

**Messageries du livre**  
5, rue Raiffeisen  
L-2411 Luxembourg  
Tél. 40 10 20  
Fax 49 06 61

**NEDERLAND**

**SDU Servicecentrum Uitgeverijen**  
Postbus 20014  
2500 EA 's-Gravenhage  
Tel. (070) 37 89 880  
Fax (070) 37 89 783

**ÖSTERREICH**

**Manz'sche Verlags-  
und Universitätsbuchhandlung**  
Kohlmarkt 16  
A-1014 Wien  
Tel. (1) 531 610  
Fax (1) 531 61-181

Document delivery:

**Wirtschaftskammer**  
Wiedner Hauptstraße  
A-1045 Wien  
Tel. (0222) 50105-4356  
Fax (0222) 50206-297

**PORTUGAL**

**Imprensa Nacional - Casa da Moeda, EP**  
Rua Marquês Sá da Bandeira, 16-A  
P-1099 Lisboa Codex  
Tel. (01) 353 03 99  
Fax (01) 353 02 94/384 01 32

**Distribuidora de Livros  
Bertrand, Ld.ª**

**Grupo Bertrand, SA**  
Rua das Terras dos Vales, 4-A  
Apartado 37  
P-2700 Amadora Codex  
Tel. (01) 49 59 050  
Fax 49 60 255

**SUOMI/FINLAND**

**Akateeminen Kirjakauppa**  
Akademiska Bokhandeln  
Pohjoisesplanadi 39 / Norra esplanaden 39  
PL / PB 128  
FIN-00101 Helsinki / Helsingfors  
Tel. (90) 121 4322  
Fax (90) 121 44 35

**SVERIGE**

**BTJ AB**

Traktorvägen 11  
Box 200  
S-221 00 Lund  
Tel. (046) 18 00 00  
Fax (046) 18 01 25

**UNITED KINGDOM**

**HMSO Books (Agency section)**  
HMSO Publications Centre  
51 Nine Elms Lane  
London SW8 5DR  
Tel. (0171) 873 9090  
Fax (0171) 873 8463

**ICELAND**

**BOKABUD  
LARUSAR BLÖNDAL**  
Skólavörðustíg, 2  
IS-101 Reykjavík  
Tel. 551 56 50  
Fax 552 55 60

**NORGE**

**NIC Info a/s**  
Boks 6512 Etterstad  
0606 Oslo  
Tel. (22) 57 33 34  
Fax (22) 68 19 01

**SCHWEIZ/SUISSE/SVIZZERA**

**OSEC**  
Stampfenbachstraße 85  
CH-8035 Zürich  
Tel. (01) 365 54 49  
Fax (01) 365 54 11

**BÄLGARIJA**

**Europress Klassica BK Ltd**  
66, bd Vitosha  
BG-1463 Sofia  
Tel./Fax (2) 52 74 75

**ČESKÁ REPUBLIKA**

**NIS ČR**  
Havelkova 22  
CZ-130 00 Praha 3  
Tel./Fax (2) 24 22 94 33

**HRVATSKA**

**Mediatrade**  
P. Hatza 1  
HR-4100 Zagreb  
Tel./Fax (041) 43 03 92

**MAGYARORSZÁG**

**Euro-Info-Service**  
Europá Ház  
Margitsziget  
H-1138 Budapest  
Tel./Fax (1) 111 60 61, (1) 111 62 16

**POLSKA**

**Business Foundation**  
ul. Krucza 38/42  
PL-00-512 Warszawa  
Tel. (2) 621 99 93, 628 28 82  
International Fax&Phone (0-39) 12 00 77

**ROMÂNIA**

**Euromedia**  
65, Strada Dionisie Lupu  
RO-70184 Bucuresti  
Tel./Fax 1-31 29 646

**RUSSIA**

**CCEC**  
9,60-Ieliya Oktyabrya Avenue  
117312 Moscow  
Tel./Fax (095) 135 52 27

**SLOVAKIA**

**Slovak Technical  
Library**  
Nám. slobody 19  
SLO-812 23 Bratislava 1  
Tel. (7) 52 204 52  
Fax (7) 52 957 85

**CYPRUS**

**Cyprus Chamber of Commerce  
and Industry**  
Chamber Building  
38 Grivas Dhigenis Ave  
3 Deligiorgis Street  
PO Box 1455  
Nicosia  
Tel. (2) 44 95 00, 46 23 12  
Fax (2) 36 10 44

**MALTA**

**Miller Distributors Ltd**  
PO Box 25  
Malta International Airport LQA 05 Malta  
Tel. 66 44 88  
Fax 67 67 99

**TÜRKIYE**

**Pres AS**  
Dünya Infotel  
TR-80050 Tünel-Istanbul  
Tel. (1) 251 91 90/251 96 96  
Fax (1) 251 91 97

**ISRAEL**

**Roy International**  
17, Shimon Hatarssi Street  
P.O.B. 13056  
61130 Tel Aviv  
Tel. (3) 546 14 23  
Fax (3) 546 14 42

Sub-agent for the Palestinian Authority:

**INDEX Information Services**  
PO Box 19502  
Jerusalem  
Tel. (2) 27 16 34  
Fax (2) 27 12 19

**EGYPT/  
MIDDLE EAST**

**Middle East Observer**  
41 Sherif St.  
Cairo  
Tel/Fax (2) 393 97 32

**UNITED STATES OF AMERICA/  
CANADA**

**UNIPUB**

4611-F Assembly Drive  
Lanham, MD 20706-4391  
Tel. Toll Free (800) 274 48 88  
Fax (301) 459 00 56

**CANADA**

Subscriptions only  
Uniquement abonnements

**Renouf Publishing Co. Ltd**

1294 Algoma Road  
Ottawa, Ontario K1B 3W8  
Tel. (613) 741 43 33  
Fax (613) 741 54 39

**AUSTRALIA**

**Hunter Publications**  
58A Gipps Street  
Collingwood  
Victoria 3066  
Tel. (3) 9417 53 61  
Fax (3) 9419 71 54

**JAPAN**

**Procurement Services Int. (PSI-Japan)**

Kyoku Dome Postal Code 102  
Tokyo Kojimachi Post Office  
Tel. (03) 32 34 69 21  
Fax (03) 32 34 69 15

Sub-agent:

**Kinokuniya Company Ltd**

Journal Department  
PO Box 55 Chitose  
Tokyo 156  
Tel. (03) 34 39-0124

**SOUTH and EAST ASIA**

**Legal Library Services Ltd**

Orchard  
PO Box 0523  
Singapore 9123  
Tel. 243 24 98  
Fax 243 24 79

**SOUTH AFRICA**

**Safto**

5th Floor, Export House  
Cnr Maude & West Streets  
Sandton 2146  
Tel. (011) 883-3737  
Fax (011) 883-6569

**ANDERE LÄNDER  
OTHER COUNTRIES  
AUTRES PAYS**

**Office des publications officielles  
des Communautés européennes**

2, rue Mercier  
L-2985 Luxembourg  
Tél. 29 29-1  
Télex PUBOF LU 1324 b  
Fax 48 85 73, 48 68 17

Price (excl. VAT) in Luxembourg: Single copy ECU 7 • Subscription ECU 62



OFICINA DE PUBLICACIONES OFICIALES DE LAS COMUNIDADES EUROPEAS  
KONTOR ET FOR DE EUROPÆISKE FÆLLESSKABERS OFFICIELLE PUBLIKATIONER  
AMT FÜR AMTLICHE VERÖFFENTLICHUNGEN DER EUROPÄISCHEN GEMEINSCHAFTEN  
ΥΠΗΡΕΣΙΑ ΕΠΙΣΗΜΩΝ ΕΚΔΟΣΕΩΝ ΤΩΝ ΕΥΡΩΠΑΪΚΩΝ ΚΟΙΝΟΤΗΤΩΝ  
OFFICE FOR OFFICIAL PUBLICATIONS OF THE EUROPEAN COMMUNITIES  
OFFICE DES PUBLICATIONS OFFICIELLES DES COMMUNAUTÉS EUROPÉENNES  
UFFICIO DELLE PUBBLICAZIONI UFFICIALI DELLE COMUNITÀ EUROPEE  
BUREAU VOOR OFFICIËLE PUBLIKATIES DER EUROPESE GEMEENSCHAPPEN  
SERVIÇO DAS PUBLICAÇÕES OFICIAIS DAS COMUNIDADES EUROPEIAS

L - 2985 Luxembourg

Catalogue number: CA-BH-96-007-EN-C