



Theme 2
Economy and finance
Series B
Short-term trends

Consumer price index

12 □ 1986 Monthly

PRICES : in 1986 the Community achieved the best result since 1961

The CPI for the Community (EUR-12) as a whole for December 1986 is estimated at 161.1 (base 1980 = 100), which corresponds to an increase of 0.2 % from November 1986.

Among the EC countries only Greece (+ 0.9 %) and Portugal (+1.7 %) recorded important increases.

On the other hand decreases were reported from the Netherlands and Luxemburg (both -0.1 %).

In Denmark the CPI remained unchanged, whereas in the other countries rises varied between 0.1 % and 0.3 %.

In 1986 the CPI for EUR-12 went up by 2.8 % (December 1986 compared to December 1985), which was the lowest increase for 25 years.

Within the Community the best results were recorded in Luxemburg (-1.4 %) and the Federal Republic of Germany (-1.1 %), followed by the Netherlands (+ 0.2 %) and Belgium (+ 0.6 %), France (+ 2.1 %), Ireland (3.2 %), the United Kingdom (+ 3.7 %), Italy (+ 4.1 %) and Denmark (+ 4.4 %).

The Spanish inflation rate is estimated at about 8 %. Finally Portugal (+ 10.6 %) and Greece (16.9 %) recorded inflation rates, which were respectively 4 and 6 times higher than the Community average.

Inflation for the USA can be estimated at an annual rate of about 1.5 % for December, the lowest rate since 1964.

The corresponding 1986 data for some non-Community countries show a decrease of 0.2 % for Japan, a stabilization of prices in Switzerland and increases in Austria 1.1 %, in Sweden about 3.5 %, in Finland 3.4 % and Canada about 4.5 %, whereas Norway registered a more important increase (+8.9 %).



Consumer price index

Monthly 1986

DE EUROPÆISKE FÆLLESSKABERS STATISTISKE KONTOR
STATISTISCHES AMT DER EUROPÄISCHEN GEMEINSCHAFTEN
ΣΤΑΤΙΣΤΙΚΗ ΥΠΗΡΕΣΙΑ ΤΩΝ ΕΥΡΩΠΑΪΚΩΝ ΚΟΙΝΟΤΗΤΩΝ
STATISTICAL OFFICE OF THE EUROPEAN COMMUNITIES
OFICINA ESTADÍSTICA DE LAS COMUNIDADES EUROPEAS
OFFICE STATISTIQUE DES COMMUNAUTÉS EUROPÉENNES
ISTITUTO STATISTICO DELLE COMUNITÀ EUROPEE
BUREAU VOOR DE STATISTIEK DER EUROPESE GEMEENSCHAPPEN
SERVIÇO DE ESTATÍSTICA DAS COMUNIDADES EUROPEIAS

L-2920 Luxembourg — Tél. 43011 — Téléx : Comeur Lu 3423
B-1049 Bruxelles, Bâtiment Berlaymont, Rue de la Loi 200 (Bureau de liaison) — Tél. 235 11 11

INDEX : In 1986 the Community achieved the best result since 1961

The CPI for the Community (EUR-15) as a whole for December 1986 is estimated at 107.1 (base 1980 = 100), which corresponds to an increase of 0.5 % from November 1986.

The information included in this bulletin has been taken from the Cronos data bank, which is accessible via the different host companies. For all information about these host companies contact Eurostat in Luxembourg, tel. 4301-3220. To obtain specifications of the principal characteristics of the series contained in this bulletin contact Luxembourg, tel.

4301-3202 or 4301-3511

On the other hand decreases were reported from the Netherlands and Luxembourg (both -0.1 %).

In January the CPI remained unchanged, whereas in the other countries rises varied between 0.1 % and 0.5 %.

In 1986 the CPI for EUR-15 went up by 5.8 % (December 1980 compared to December 1985), which was the lowest increase for 35 years.

Within the Community the best results were recorded in Luxembourg (-1.4 %) and the Federal Republic of Germany (-1.1 %), followed by the Netherlands (-0.5 %) and Belgium (-0.6 %), France (-0.5 %), Ireland (-0.5 %), the United Kingdom (-0.7 %), Italy (-1.1 %) and Denmark (-1.4 %).

The Spanish inflation rate is estimated at about 8 % (December 1986). Luxembourg : Office des publications officielles des Communautés européennes, 1986

Reproduction is authorized, except by commercial data-base networks, subject to acknowledgement of the source. For conditions relating to reproduction by data-base services, application should be made to Eurostat, L-2920 Luxembourg.

The corresponding 1986 data for some non-Community countries show a decrease of 0.5 % for Japan, a stabilization of prices in Switzerland and increases in Austria 1.1 %, in Sweden about 2.5 %, in Finland 3.4 % and Canada 4.7 %, whereas Norway registered a more important increase (+8.9 %).

Printed in Luxembourg

VERBRAUCHERPREISE
GESAMTINDEX

CONSUMER PRICES
GENERAL INDEX

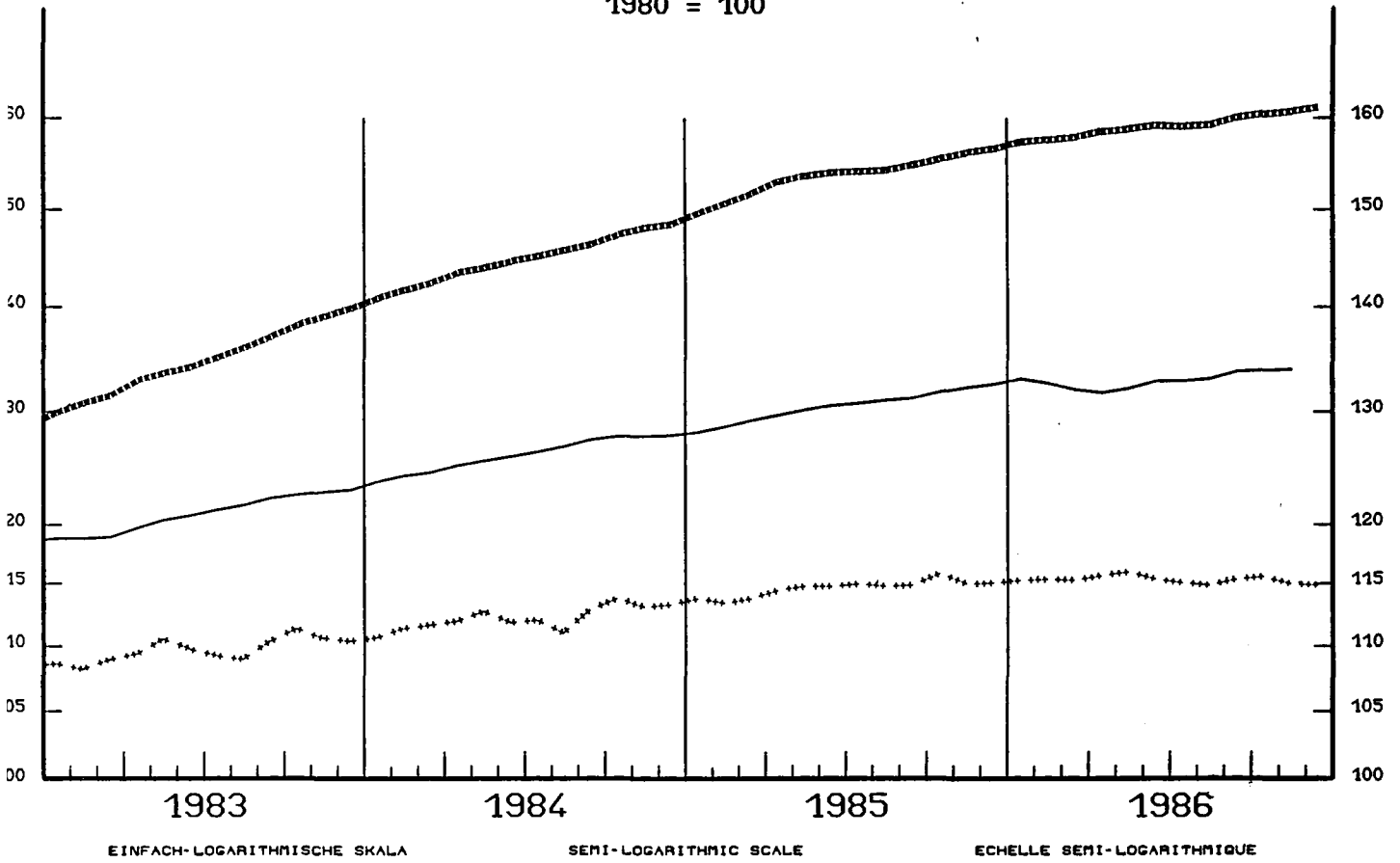
PRIX A LA CONSOMMATION
INDICE GENERAL

— USA

⋯ EUR 12

⋆⋆⋆⋆ JAPAN

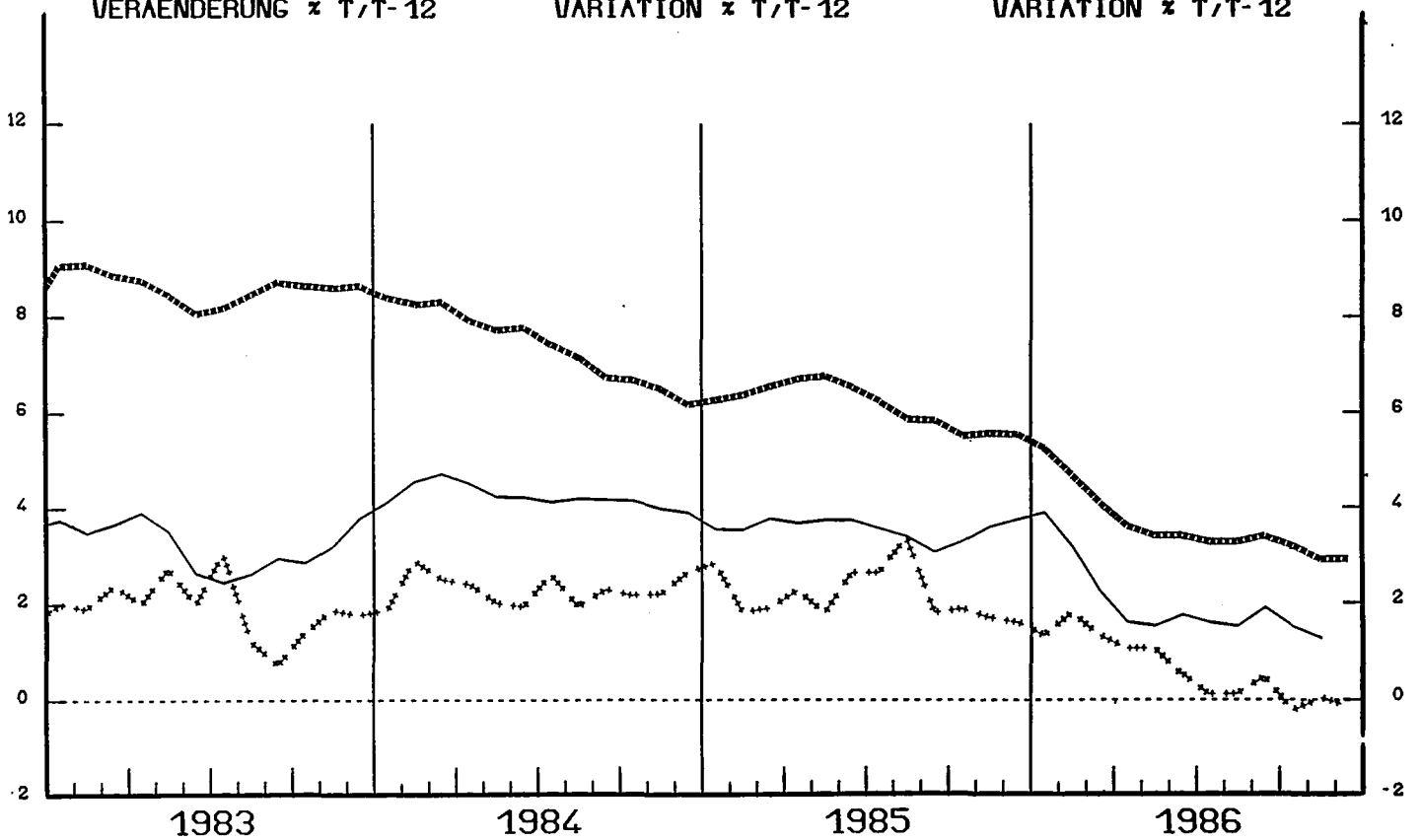
1980 = 100



VERÄNDERUNG % T/T-12

VARIATION % T/T-12

VARIATION % T/T-12



CONSUMER PRICES

A

GENERAL INDEX

	EUR 10	BR DEUTSCH LAND	FRANCE	ITALIA	NEDER= LAND	BELGIQUE BELGIE	LUXEM= BOURG	UNITED KINGDOM	IRELAND	DANMARK	ELLAS	ESPANA	PORTUGAL	EUR 12	USA	JAPAN
PRICE INDICES																
1980 = 100																
1981 O	111.7	106.3	113.4	117.8	106.7	107.6	108.1	111.9	120.4	111.7	124.5	114.6	120.0	112.1	110.3	104.9
1982 O	123.0	111.9	126.8	137.2	112.8	117.0	118.2	121.5	141.1	123.0	150.5	131.1	147.3	124.2	117.1	107.7
1983 O	132.7	115.6	139.0	157.3	115.9	126.0	128.4	127.1	155.8	131.5	181.4	147.0	184.3	134.8	120.9	109.7
1984 O	141.2	118.4	149.3	174.3	119.6	134.0	136.7	133.4	169.2	139.8	214.6	163.6	237.5	144.8	126.1	112.3
1985 O	149.1	121.0	158.0	190.3	122.3	140.5	142.3	141.5	178.4	146.4	256.3	178.0	284.1	153.7	130.5	114.5
1986 OP	153.4	120.7	161.9	201.4	122.7	142.3	142.7	146.3	185.2	151.7	314.8	193.6	317.6	159.2	:	115.3
1985 D	151.7	121.4	160.3	196.9	122.9	141.8	144.5	143.7	:	147.9	288.8	183.2	299.4	156.6	132.6	115.0
1986 J	152.1	121.6	160.4	197.9	122.4	142.0	144.2	144.0	:	147.5	295.6	188.4	305.1	157.4	133.1	115.5
1986 F	152.1	121.3	160.0	198.7	122.6	142.1	143.6	144.5	183.3	147.4	293.5	189.3	309.2	157.6	132.7	115.3
1986 M	152.4	121.0	160.4	199.6	122.7	141.9	142.9	144.7	:	148.0	302.8	190.1	312.7	157.9	132.1	115.2
1986 A	153.0	120.9	161.0	200.0	123.2	142.4	142.7	146.1	:	151.8	307.3	190.5	316.8	158.5	131.8	115.6
1986 M	153.3	120.9	161.4	201.0	123.2	142.0	142.7	146.4	185.5	152.9	309.0	191.0	315.3	158.8	132.2	115.9
1986 J	153.5	121.1	161.9	201.3	122.7	142.2	142.6	146.3	:	152.7	314.3	192.7	316.3	159.2	132.9	115.3
1986 J	153.2	120.5	162.1	201.3	121.7	142.2	142.3	145.9	:	151.7	312.6	194.7	316.2	159.1	132.9	115.0
1986 A	153.3	120.2	162.3	201.9	121.8	142.3	141.9	146.3	185.8	152.5	312.5	195.3	319.3	159.3	133.1	114.8
1986 S	154.0	120.4	162.9	202.5	122.4	142.8	142.3	147.1	:	153.7	324.4	197.3	320.5	160.0	133.8	115.3
1986 O	154.3	120.0	163.3	203.6	123.2	142.7	142.5	147.3	:	154.0	332.6	198.1	322.7	160.4	133.9	115.5
1986 N	154.7	119.9	163.5	204.4P	123.3	142.6	142.5	148.5	186.2	154.4	334.9	197.6	325.5	160.7	134.0	114.9
1986 D	155.0	120.1	163.7P	205.0P	123.2P	142.7	142.4	149.0	:	154.4P	337.8	198.2P	331.1	161.1	:	114.8
RATE OF INCREASE OVER ONE MONTH (IRELAND 3 MONTHS)																
(T/T-1)																
85 D/N	0.2	0.1	0.1	0.6	-0.2	0.0	0.2	0.1	:	-0.1	3.3	0.4	1.7	0.3	0.2	0.1
86 J/85D	0.2	0.2	0.1	0.5	-0.4	0.1	-0.2	0.2	:	-0.3	2.3	2.8	1.9	0.5	0.3	0.2
86 F/J	0.0	-0.2	-0.2	0.4	0.2	0.1	-0.4	0.4	1.6	-0.1	-0.7	0.5	1.3	0.1	-0.3	0.1
86 M/F	0.2	-0.2	0.2	0.5	0.1	-0.2	-0.5	0.1	:	0.4	3.2	0.4	1.2	0.2	-0.5	-0.1
86 A/M	0.4	-0.1	0.4	0.2	0.4	0.3	-0.1	1.0	:	2.6	1.5	0.2	1.3	0.4	-0.2	0.3
86 M/A	0.2	0.0	0.2	0.5	0.0	-0.2	0.0	0.2	1.2	0.7	0.5	0.2	-0.5	0.2	0.3	0.3
86 J/M	0.1	0.2	0.3	0.4	-0.4	0.1	-0.1	-0.1	:	-0.1	1.7	0.9	0.3	0.2	0.5	-0.5
86 J/J	-0.2	-0.5	0.1	0.0	-0.8	0.0	-0.2	-0.3	:	-0.7	-0.5	1.0	0.0	-0.1	0.0	-0.3
86 A/J	0.1	-0.2	0.1	0.3	0.1	0.1	-0.3	0.3	0.2	0.5	0.0	0.3	1.0	0.1	0.2	-0.2
86 S/A	0.4	0.2	0.4	0.3	0.5	0.3	0.3	0.5	:	0.8	3.8	1.1	0.4	0.5	0.5	0.4
86 O/S	0.2	-0.3	0.2	0.5	0.7	-0.1	0.1	0.2	:	0.2	2.6	0.4	0.7	0.2	0.1	0.2
86 N/O	0.3	-0.1	0.1	0.4P	0.1	-0.1	0.0	0.8	0.2	0.3	0.7	-0.2	0.9	0.2	0.1	-0.5
86 D/N	0.2	0.2	0.1P	0.3P	-0.1P	0.1	-0.1	0.3	:	0.0P	0.9	0.3P	1.7	0.2	:	-0.1
RATE OF INCREASE OVER 12 MONTHS																
(T/T-12)																
85/84 D	5.1	1.8	4.7	8.8	1.7	4.0	4.1	5.7	:	3.6	25.0	8.1	16.8	5.6	3.8	1.6
86/85 J	4.7	1.3	4.2	8.2	1.5	3.5	3.6	5.5	:	2.8	25.0	9.2	14.2	5.3	3.9	1.3
86/85 F	4.0	0.7	3.4	7.3	1.3	2.5	2.6	5.1	4.6	2.1	24.4	9.0	12.6	4.6	3.2	1.8
86/85 M	3.4	0.1	3.0	7.0	0.7	1.5	1.5	4.2	:	1.7	24.8	8.7	12.2	4.1	2.3	1.3
86/85 A	3.0	-0.2	2.6	6.4	0.7	1.4	0.5	3.0	:	4.0	24.7	7.8	12.3	3.6	1.6	1.0
86/85 M	2.8	-0.2	2.3	6.1	0.5	1.1	0.4	2.8	4.4	4.0	24.5	7.7	11.5	3.4	1.6	1.0
86/85 J	2.6	-0.2	2.3	6.0	0.2	1.2	0.1	2.5	:	3.9	24.4	8.9	11.7	3.4	1.7	0.5
86/85 J	2.4	-0.5	2.0	5.5	-0.4	0.7	-0.6	2.4	:	3.6	24.6	9.3	11.2	3.2	1.6	0.1
86/85 A	2.4	-0.4	2.0	5.5	-0.3	0.8	-0.5	2.4	3.1	4.3	24.2	9.5	11.5	3.2	1.6	0.1
86/85 S	2.5	-0.4	2.3	5.3	-0.3	0.9	-0.3	3.0	:	4.6	22.8	9.5	11.8	3.3	1.8	0.4
86/85 O	2.3	-0.9	2.2	4.8	0.0	0.8	-1.0	3.0	:	4.5	21.9	9.4	11.4	3.1	1.5	-0.3
86/85 N	2.2	-1.2	2.1	4.4P	0.1	0.5	-1.2	3.5	3.2	4.3	19.8	8.3	10.6	2.9	1.3	0.0
86/85 D	2.1	-1.1	2.1P	4.1P	0.2P	0.4	-1.1	3.7	:	4.2P	14.0	8.2P	10.4	2.8	:	-0.2

	SWITZERLAND SCHWEIZ	AUSTRIA OESTERREICH	NORWAY NORGE	SWEDEN SVERIGE	FINLAND SUOMI	CANADA CANADA
	PRICE INDICES					1980 = 100
1981 O	106.5	106.8	113.6	112.1	111.9	112.5
1982 O	112.5	112.6	126.5	121.7	122.6	124.6
1983 O	115.8	116.3	137.2	132.5	132.8	131.8
1984 O	119.2	122.9	145.7	143.2	142.2	137.6
1985 O	123.3	126.9	154.0	153.7	150.5	143.1
1986 OP	124.3	129.0	165.1	:	156.0	:
1985 D	124.6	127.8	157.3	157.1	152.3	145.7
1986 J	124.5	129.0	158.9	158.9	153.4	146.3
1986 F	124.5	129.1	159.5	159.0	154.2	146.9
1986 M	124.7	128.9	160.5	158.7	154.5	147.2
1986 A	124.6	128.6	161.6	159.7	155.1	147.5
1986 M	124.2	128.5	161.8	159.7	155.6	148.1
1986 J	124.2	128.9	164.6	159.7	156.4	148.4
1986 J	123.6	129.0	166.3	160.1	156.5	149.5
1986 A	123.8	129.3	166.9	159.9	156.8	149.9
1986 S	124.1	129.4	169.3	161.3	156.9	149.9
1986 O	124.0	129.3	170.0	161.9	157.3	150.7
1986 N	124.3	129.0	170.4	161.9	157.3	151.5
1986 D	124.6	129.1	171.1	:	157.5	:
	RATE OF INCREASE OVER ONE MONTH					(T/T-1)
85 D/M	0.1	0.3	0.3	0.4	0.1	0.5
86J/85D	-0.1	0.9	1.0	1.1	0.7	0.5
86 F/J	0.0	0.1	0.4	0.1	0.5	0.4
86 M/F	0.1	-0.2	0.6	-0.2	0.2	0.2
86 A/M	-0.1	-0.2	0.7	0.6	0.4	0.2
86 M/A	-0.3	-0.1	0.1	0.0	0.3	0.5
86 J/M	0.0	0.3	1.7	0.0	0.5	0.2
86 J/J	-0.5	0.1	1.0	0.3	0.1	0.8
86 A/J	0.2	0.3	0.4	-0.1	0.2	0.3
86 S/A	0.2	0.1	1.5	0.9	0.1	0.0
86 O/S	-0.1	-0.1	0.4	0.4	0.3	0.5
86 N/O	0.2	-0.2	0.3	0.0	0.0	0.5
86 D/M	0.2	0.1	0.4	:	0.1	:
	RATE OF INCREASE OVER 12 MONTHS					(T/T-12)
85/84 D	3.3	2.8	5.6	5.6	4.9	4.4
86/85 J	2.2	2.9	6.0	6.2	4.5	4.4
86/85 F	1.3	2.5	6.1	5.3	4.6	4.1
86/85 M	1.0	1.8	5.5	4.3	3.8	4.1
86/85 A	1.0	1.4	5.8	4.6	3.7	3.9
86/85 M	0.7	1.5	5.6	3.4	3.0	4.1
86/85 J	0.8	1.5	6.7	3.8	3.3	3.7
86/85 J	0.5	1.5	7.4	4.1	3.4	4.2
86/85 A	0.7	1.7	8.1	4.0	3.4	4.3
86/85 S	0.7	1.7	8.6	4.4	3.3	4.1
86/85 O	0.3	1.6	8.8	4.1	3.4	4.4
86/85 N	-0.1	1.2	8.7	3.5	3.4	4.5
86/85 D	0.0	1.1	8.9	:	3.4	:

METHODOLOGY

The consumer price indices given here are the national indices which have different names in the different countries. As far as trends are concerned, the general index published by EUROSTAT always corresponds to the general index published by the country concerned. The component items of this general index are groups of national indices aggregated according to a harmonized classification conforming to the ESA (European System of Integrated Economic Accounts). For these groups, the price trends correspond to the trends noted by the national indices for the same classification field.

The field covered by the general index varies according to country: as regards the population concerned (specific income bracket, certain socio-professional categories or total households), the geographical areas used (capital, urban areas, country as a whole, etc.) or differences in treatment of expenditure on rent, health care etc. Finally, there is no uniform method for seasonal adjustments.

A fixed base system is used in some countries, whereas in others a chain system is used (variable weightings). The reference years used at national level for the indices vary according to country. For ease of comparison, EUROSTAT has chosen 1980 as the common year for the presentation of these indices.

CALCULATION OF EUR-10 AND EUR-12 INDICES

The EUR-10 and EUR-12 indices calculated by EUROSTAT are weighted indices.

The weighting used is the proportion of each country in the total consumption of EUR-10 and EUR-12 respectively. The values of this consumption in national currency are converted in purchasing power standards. For this purpose the purchasing power parities of the G.D.P. are used.

The index calculated is of the chain Laspeyres type.

However, the weighting is displaced by three years since the national accounts data become available with a delay of approximately three years. For example: the weighting used for 1986 is that of 1983, for 1980, that of 1977.

Moreover, the national accounts data are often modified, leading to revisions.

In order to avoid continuous corrections in the EUR-10 and EUR-12 indices, EUROSTAT has decided to "freeze" the historical data.

When Member States carry out major revisions in price series for past years, EUR-10 and EUR-12 data will be calculated using the new series.

Venta y suscripciones · Salg og abonnement · Verkauf und Abonnement · Πωλήσεις και συνδρομές
 Sales and subscriptions · Vente et abonnements · Vendita e abbonamenti
 Verkoop en abonnementen · Venda e assinaturas

BELGIOUE/BELGIË

Moniteur belge/Belgisch Staatsblad
 Rue de Louvain 40-42/Leuvensestraat 40-42
 1000 Bruxelles/1000 Brussel
 Tél. 512 00 26
 CCP/Postrekening 000-2005502-27

Sous-dépôts/Agentschappen:

Librairie européenne/
 Europese Boekhandel

Rue de la Loi 244/Wetstraat 244
 1040 Bruxelles/1040 Brussel

CREDOC

Rue de la Montagne 34/Bergstraat 34
 Bte 11/Bus 11
 1000 Bruxelles/1000 Brussel

DANMARK

Schultz EF-publikationer

Møntergade 19
 1116 København K
 Tlf: (01) 14 11 95
 Girokonto 200 11 95

BR DEUTSCHLAND

Bundesanzeiger Verlag

Breite Straße
 Postfach 10 80 06
 5000 Köln 1
 Tel. (02 21) 20 29-0
 Fernschreiber:
 ANZEIGER BONN 8 882 595
 Telecopierer:
 20 29 278

GREECE

G.C. Eleftheroudakis SA

International Bookstore
 4 Nikis Street
 105 63 Athens
 Tel. 322 22 55
 Telex 219410 ELEF

Sub-agent for Northern Greece:

Molho's Bookstore

The Business Bookshop
 10 Tsimiski Street
 Thessaloniki
 Tel. 275 271
 Telex 412885 LIMO

ESPAÑA

Boletín Oficial del Estado

Trafalgar 27
 E-28010 Madrid
 Tel. (91) 446 60 00

Mundi-Prensa Libros, S.A.

Castelló 37
 E-28001 Madrid
 Tel. (91) 431 33 99 (Libros)
 431 32 22 (Suscripciones)
 435 36 37 (Dirección)
 Télex 49370-MPLI-E

FRANCE

Service de vente en France des publications
 des Communautés européennes

Journal officiel
 26, rue Desaix
 75732 Paris Cedex 15
 Tél. (1) 45 78 61 39

IRELAND

Government Publications Sales Office

Sun Alliance House
 Molesworth Street
 Dublin 2
 Tel. 71 03 09

or by post

Stationery Office
 St Martin's House
 Waterloo Road
 Dublin 4
 Tel. 68 90 66

ITALIA

Licosa Spa

Via Lamarmora, 45
 Casella postale 552
 50 121 Firenze
 Tel. 57 97 51
 Telex 570466 LICOSA I
 CCP 343 509

Subagenti:

Libreria scientifica Lucio de Biasio - AEIOU

Via Meravigli, 16
 20 123 Milano
 Tel. 80 76 79

Libreria Tassi

Via A. Farnese, 28
 00 192 Roma
 Tel. 31 05 90

Libreria giuridica

Via 12 Ottobre, 172/R
 16 121 Genova
 Tel. 59 56 93

GRAND-DUCHÉ DE LUXEMBOURG

Office des publications officielles
 des Communautés européennes

2, rue Mercier
 L-2985 Luxembourg
 Tél. 49 92 81
 Téléx PUBOF LU 1324 b
 CCP 19190-81
 CC bancaire BIL 8-109/6003/200

Messageries Paul Kraus

11, rue Christophe Plantin
 L-2339 Luxembourg
 Tél. 48 21 31
 Téléx 2515
 CCP 49242-63

NEDERLAND

Staatsdrukkerij- en uitgeverijbedrijf

Christoffel Plantijnstraat
 Postbus 20014
 2500 EA 's-Gravenhage
 Tel. (070) 78 99 11

PORTUGAL

Imprensa Nacional

Av. Francisco Manuel de Melo, 5
 P-1000 Lisboa
 Tel. 65 39 96

Distribuidora Livros Bertrand Lda.

Grupo Bertrand, SARL
 Rua das Terras dos Vales, 4-A
 Apart. 37
 P-2700 Amadora CODEX
 Tel. 493 90 50 - 494 87 88
 Telex 15798 BERDIS

UNITED KINGDOM

HM Stationery Office

HMSO Publications Centre
 51 Nine Elms Lane
 London SW8 5DR
 Tel. (01) 211 56 56

Sub-agent:

Alan Armstrong & Associates Ltd

72 Park Road
 London NW1 4SH
 Tel. (01) 723 39 02
 Telex 297635 AAALTD G

SCHWEIZ/SUISSE/SVIZZERA

Librairie Payot

6, rue Grenus
 1211 Genève
 Tél. 31 89 50
 CCP 12-236

UNITED STATES OF AMERICA

European Community Information
 Service

2100 M Street, NW
 Suite 707
 Washington, DC 20037
 Tel. (202) 862 9500

CANADA

Renouf Publishing Co., Ltd

61 Sparks Street
 Ottawa
 Ontario K1P 5R1
 Tel. Toll Free 1 (800) 267 4164
 Ottawa Region (613) 238 8985-6
 Telex 053-4936

JAPAN

Kinokuniya Company Ltd

17-7 Shinjuku 3-Chôme
 Shiniuku-ku
 Tokyo 160-91

Tel. (03) 354 0131

Journal Department

PO Box 55, Chitose

Tokyo 156

Tel. (03) 439 0124

Price (excluding VAT) in Luxembourg • Prix publics au Luxembourg (TVA exclue)

	ECU	BFR	FF	IRL	UKL	USD
Single copy • Prix par numéro	2,23	100	16	1,60	1,40	2
Subscription • Abonnement	28,96	1 300	195	20,75	17	24



KONTORET FOR DE EUROPÆISKE FÆLLESSKABERS OFFICIELLE PUBLIKATIONER
 AMT FÜR AMTLICHE VERÖFFENTLICHUNGEN DER EUROPÄISCHEN GEMEINSCHAFTEN
 ΥΠΗΡΕΣΙΑ ΕΠΙΣΗΜΩΝ ΕΚΔΟΣΕΩΝ ΤΩΝ ΕΥΡΩΠΑΪΚΩΝ ΚΟΙΝΟΤΗΤΩΝ
 OFFICE FOR OFFICIAL PUBLICATIONS OF THE EUROPEAN COMMUNITIES
 OFICINA DE LAS PUBLICACIONES OFICIALES DE LAS COMUNIDADES EUROPEAS
 OFFICE DES PUBLICATIONS OFFICIELLES DES COMMUNAUTÉS EUROPÉENNES
 UFFICIO DELLE PUBBLICAZIONI UFFICIALI DELLE COMUNITÀ EUROPEE
 BUREAU VOOR OFFICIËLE PUBLIKATIES DER EUROPESE GEMEENSCHAPPEN
 SERVIÇO DAS PUBLICAÇÕES OFICIAIS DAS COMUNIDADES EUROPEIAS

ISSN 0258-0861