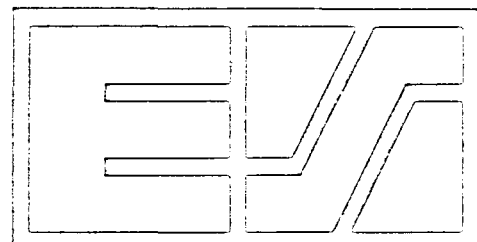


CONSUMER PRICE INDEX



eurostat

RAPID INFORMATION

THE CONSUMER PRICE INDEX IN MAY 1985

Between April and May 1985 the consumer price index for the Community as a whole rose by 0.4 %; a rise which is clearly lower than the increases recorded during the first 4 months of 1985.

The rise in May resulted mainly from price increases in Greece (0.7 %), in Denmark (0.7 %), in Italy (0.6 %), in France (0.5 %) and in the United Kingdom (0.5 %).

The increases in the F.R. of Germany as well as in the BENELUX-countries were 0.1 %.

The index for Ireland went up by 1,3 % between mid-February and mid-May 1985, which corresponds to a monthly rise of about 0,4%.

The inflation rate over 12 months, measured by comparing the index of May 1985 with that of May 1984, amounts to 6.0 %, which means that there was hardly any change since last month.

However, it should be pointed out that the comparable rates for the big industrialized countries remain clearly under this EC-level, e.g. United States 3.7 %, Canada 3,9 %, Japan 1.2 %.

N.B. Thanks to the cooperation of the Central Statistical Office of Finland, Eurostat will be able to publish from now on also the CPI for this country (see table C).

Also available in FR

5 □ 1985

CONSUMER PRICES

A

PRIX A LA CONSOMMATION

GENERAL INDEX

INDICE GENERAL

	EUR 10	BR DEUTSCH LAND	FRANCE	ITALIA	NEDER= LAND	BELGIQUE BELGIE	LUXEM= BOURG*	UNITED KINGDOM	IRELAND	DANMARK	ELLAS*	ESPANA	PORTUGAL	USA	CANADA	JAPAN
		PRICE INDICES							1980 = 100	INDICES DE PRIX						
1981 O	111.7	106.3	113.4	117.8	106.7	107.6	108.1	111.9	120.4	111.7	124.5	114.6	120.0	110.3	112.5	104.9
1982 O	123.0	111.9	126.8	137.2	112.8	117.0	118.2	121.5	141.1	123.0	150.6	131.0	146.9	117.1	124.6	107.7
1983 O	132.4	115.6	139.0	157.3	115.9	126.0	128.4	127.1	155.8	131.5	181.1	147.0	184.3	120.9	131.8	109.7
1984 O	140.7	118.4	149.3	174.3	119.6	134.0	136.7	133.4	169.2	139.8	214.5	163.5	238.4	126.1	137.6	112.1
1984 A	139.5	118.1	147.3	171.9	119.4	133.1	136.0	132.6	:	138.0	209.5	160.5	230.7	125.1	136.7	111.9
1984 M	140.1	118.2	148.1	173.0	119.4	133.4	136.4	133.1	168.8	139.4	212.2	161.3	228.6	125.5	136.9	112.7
1984 J	140.6	118.6	148.8	174.0	119.4	133.7	136.5	133.4	:	140.2	215.6	162.5	235.8	125.9	137.5	111.8
1984 J	140.8	118.4	149.8	174.4	119.3	134.5	136.8	133.3	:	139.9	214.9	165.0	242.3	126.3	138.2	112.0
1984 A	141.3	118.2	150.6	175.3	119.4	135.0	137.1	134.5	170.9	140.5	213.7	166.1	246.9	126.8	138.2	111.0
1984 S	142.0	118.3	151.3	176.7	119.9	135.4	137.3	134.8	:	141.5	219.9	166.4	247.5	127.4	138.4	112.8
1984 O	143.0	119.0	152.3	178.4	120.9	136.0	138.3	135.6	:	142.1	225.3	167.4	249.7	127.7	138.6	113.7
1984 N	143.5	119.2	152.8	179.8	121.0	136.1	138.7	136.1	172.1	143.1	227.8	168.2	253.8	127.7	139.5	113.0
1984 D	143.8	119.3	153.1	180.9	120.9	136.4	138.7	135.9	:	142.8	231.1	169.5	256.2	127.8	139.6	113.2
1985 J	144.7	120.0	153.9	182.9	120.6	137.2	139.1	136.4	:	143.5	236.4	172.6	267.2	128.1	140.2	113.8
1985 F	145.7	120.5	154.7	185.1	121.0	138.7	140.0	137.5	175.3	144.4	236.0	173.8	274.5	128.6	141.1	112.9
1985 M	146.7	120.9	155.8	186.6	121.9	139.8	140.7	138.8	:	145.5	242.7	174.9	278.6	129.2	141.4	113.4
1985 A	148.0	121.1	156.9	188.0	122.4	140.3	142.0	141.8	:	146.0	246.5	176.8	282.0	129.8	142.0	114.0
1985 M	148.5	121.2	157.7P	189.1E	122.5	140.5	142.1	142.4	177.6	147.0	248.2	:	282.9	130.1	142.3	114.1
		RATE OF INCREASE OVER ONE MONTH (IRELAND 3 MONTHS)							(T/T-1)	TAUX DE CROISSANCE SUR UN MOIS (IRLANDE 3 MOIS)						
84 A/M	0.7	0.2	0.6	0.8	0.4	0.7	0.4	1.3	:	0.3	1.9	0.6	1.9	0.5	0.2	0.3
84 M/A	0.4	0.1	0.5	0.6	0.0	0.2	0.4	0.4	2.3	1.0	1.3	0.5	-0.9	0.3	0.2	0.7
84 J/M	0.4	0.3	0.5	0.6	0.0	0.3	0.0	0.3	:	0.6	1.6	0.7	3.2	0.3	0.4	-0.8
84 J/J	0.1	-0.2	0.7	0.2	-0.1	0.5	0.2	-0.1	:	-0.2	-0.3	1.5	2.7	0.3	0.6	0.2
84 A/J	0.4	-0.2	0.5	0.5	0.1	0.4	0.2	0.9	1.2	0.4	-0.6	0.7	1.9	0.4	0.0	-0.9
84 S/A	0.4	0.1	0.5	0.8	0.4	0.3	0.1	0.2	:	0.7	2.9	0.2	0.3	0.5	0.1	1.6
84 O/S	0.7	0.6	0.7	1.0	0.8	0.5	0.8	0.6	:	0.4	2.5	0.6	0.9	0.3	0.2	0.8
84 N/S	0.4	0.2	0.3	0.8	0.1	0.0	0.3	0.3	0.7	0.7	1.1	0.4	1.6	0.0	0.6	-0.6
84 D/N	0.2	0.1	0.2	0.6	-0.1	0.2	0.0	-0.1	:	-0.2	1.5	0.7	1.0	0.1	0.1	0.2
85J/84D	0.6	0.6	0.5	1.1	-0.2	0.6	0.3	0.4	:	0.5	2.3	1.8	4.3	0.2	0.4	0.5
85 F/J	0.7	0.4	0.5	1.2	0.3	1.0	0.6	0.8	1.9	0.6	-0.2	0.7	2.7	0.4	0.6	-0.8
85 M/F	0.7	0.3	0.7	0.8	0.7	0.8	0.5	0.9	:	0.8	2.9	0.7	1.5	0.5	0.2	0.4
85 A/M	0.8	0.2	0.7	0.8	0.4	0.4	0.9	2.1	:	0.3	1.6	1.1	1.2	0.4	0.4	0.5
85 M/A	0.4	0.1	0.5P	0.6E	0.1	0.1	0.1	0.5	1.3	0.7	0.7	:	0.3	0.2	0.2	0.1
		RATE OF INCREASE OVER 12 MONTHS							(T/T-12)	TAUX DE CROISSANCE SUR 12 MOIS						
84/83 A	6.7	3.0	7.9	11.6	3.6	7.5	8.1	5.2	:	6.6	18.0	11.2	31.3	4.5	4.9	2.4
84/83 M	6.6	2.8	7.8	11.3	3.6	7.2	8.0	5.1	9.7	6.5	17.6	11.3	30.4	4.2	4.8	2.0
84/83 J	6.6	2.8	7.7	11.3	3.5	6.8	7.7	5.1	:	6.9	19.2	11.4	32.1	4.2	4.1	1.9
84/83 J	6.1	2.2	7.5	10.7	2.8	6.3	6.3	4.5	:	6.5	19.2	12.8	32.9	4.1	4.2	2.6
84/83 A	6.0	1.7	7.4	10.7	2.7	5.7	5.8	5.0	8.0	6.5	18.7	12.0	31.2	4.2	3.7	1.9
84/83 S	5.7	1.5	7.1	10.1	2.7	5.3	4.9	4.7	:	6.2	18.0	11.3	27.1	4.2	3.8	2.3
84/83 O	5.8	2.1	7.0	9.5	3.0	5.8	4.8	5.0	:	6.0	18.0	10.5	25.8	4.2	3.4	2.2
84/83 N	5.6	2.1	6.9	9.2	2.9	5.3	4.6	4.9	6.8	5.8	18.0	9.9	24.9	4.0	4.0	2.2
84/83 D	5.5	2.0	6.7	9.4	2.8	5.3	4.1	4.6	:	5.6	18.1	9.0	21.3	4.0	3.8	2.6
85/84 J	5.6	2.1	6.5	9.3	2.4	5.0	3.8	5.0	:	5.8	19.0	9.5	24.6	3.6	3.7	2.9
85/84 F	5.6	2.3	6.4	9.3	2.3	5.3	3.7	5.4	6.2	5.3	18.3	9.8	25.9	3.5	3.7	1.4
85/84 M	5.9	2.5	6.4	9.4	2.5	5.7	3.9	6.1	:	5.7	18.1	9.6	23.1	3.8	3.7	1.6
85/84 A	6.1	2.5	6.5	9.4	2.5	5.5	4.4	6.9	:	5.8	17.7	10.2	22.2	3.7	3.9	1.9
85/84 M	6.0	2.5	6.5P	9.3E	2.6	5.3	4.2	7.0	5.2	5.5	17.0	:	22.8	3.7	3.9	1.9

VERBRAUCHERPREISE
GESAMTINDEX

CONSUMER PRICES
GENERAL INDEX

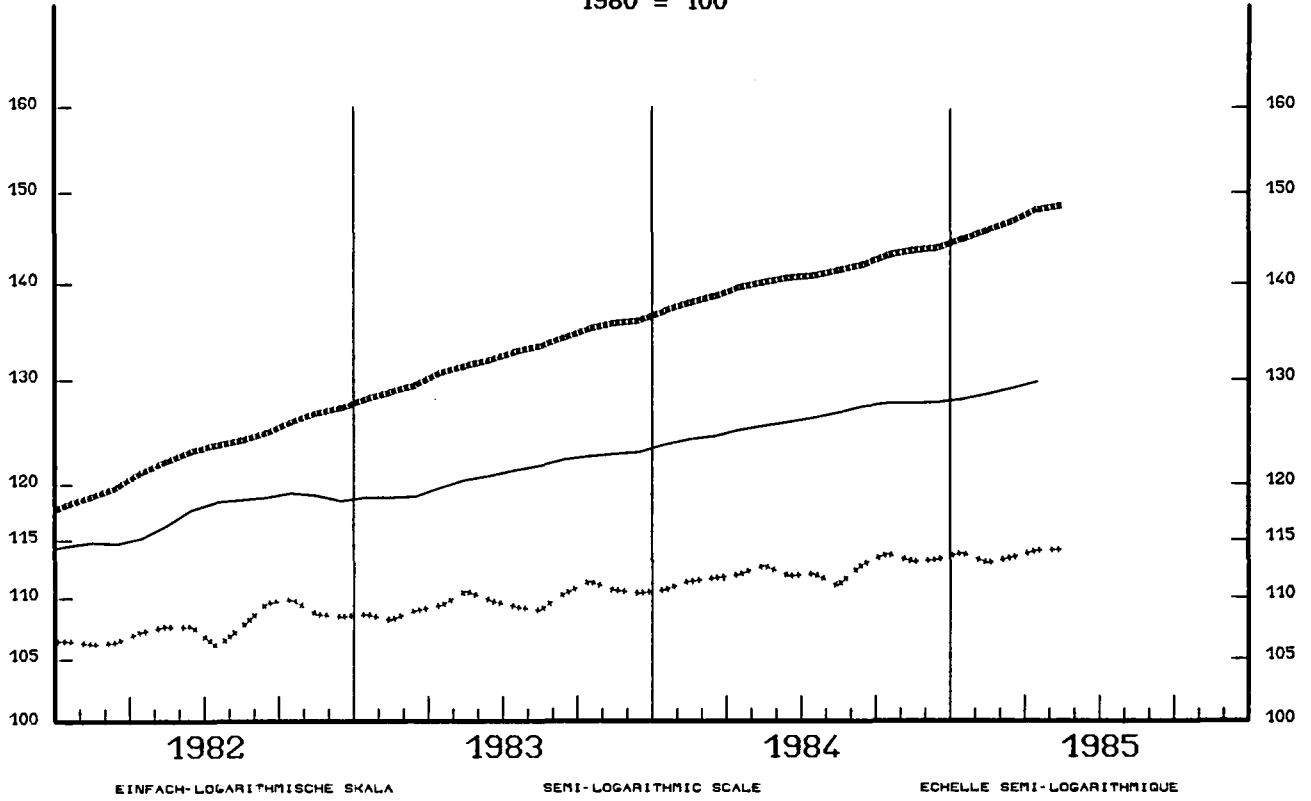
PRIX A LA CONSOMMATION
INDICE GENERAL

— USA

—••••• EUR 10

••••• JAPAN

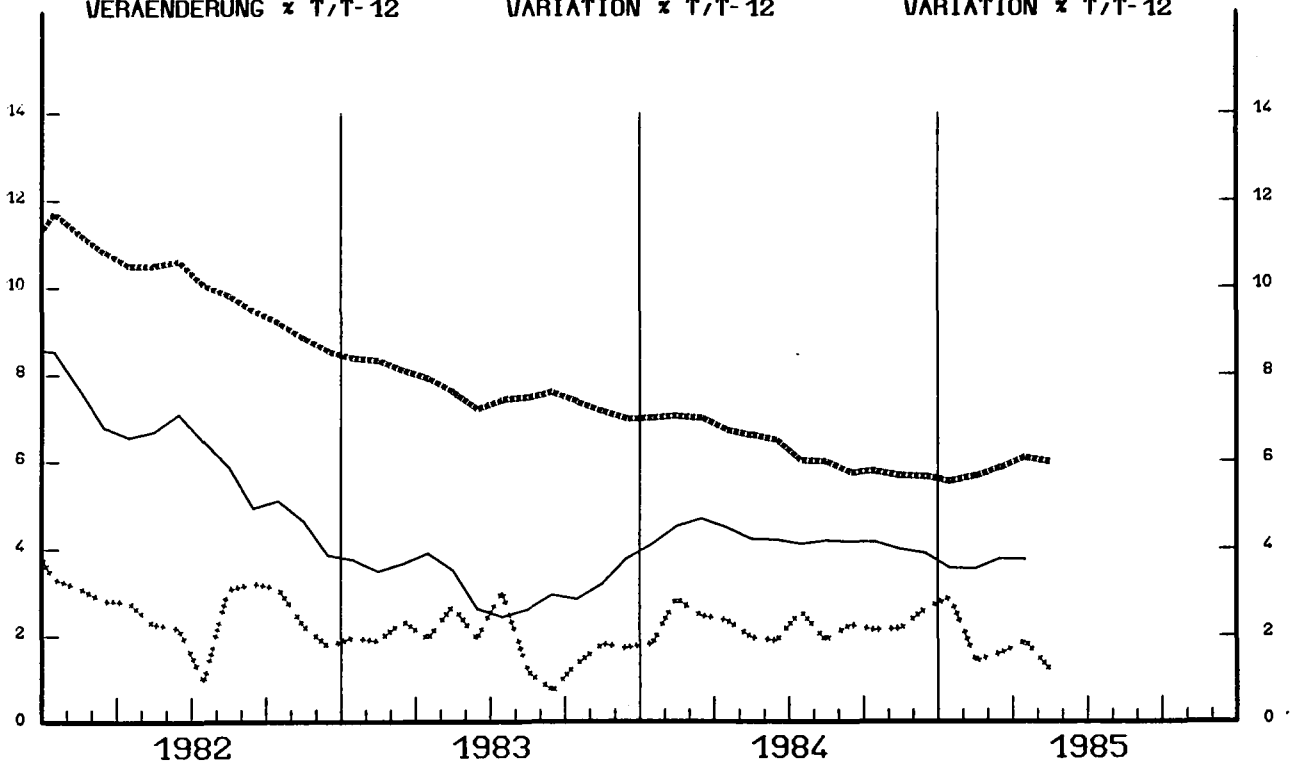
1980 = 100



VERÄNDERUNG $\times T/T-12$

VARIATION $\times T/T-12$

VARIATION $\times T/T-12$



CONSUMER PRICES

C

PRIX A LA CONSOMMATION

GENERAL INDEX

INDICE GENERAL

	SWITZERLAND SUISSE SCWEIZ	AUSTRIA AUTRICHE OESTERREICH	NORWAY NORVEGE NORGE	SWEDEN SUEDE SVERIGE	FINLAND FINLANDE SUOMI
	PRICE INDICES		1980 = 100	INDICES DE PRIX	
1981 O	106.5	106.8	113.6	112.1	111.9
1982 O	112.5	112.6	126.5	121.7	122.6
1983 O	115.8	116.3	137.2	132.5	132.8
1984 O	119.2	122.9	145.7	143.2	142.2
1984 A	119.1	122.2	144.8	141.8	140.4
1984 M	118.8	121.9	145.0	142.8	141.9
1984 J	119.2	123.0	145.7	142.4	142.3
1984 J	119.0	122.7	146.3	142.8	142.8
1984 A	119.4	123.9	146.2	143.9	143.4
1984 S	119.3	123.7	147.3	144.8	144.2
1984 O	120.1	123.9	148.0	145.5	145.0
1984 N	120.7	124.2	148.2	146.4	145.1
1984 D	120.6	124.3	148.9	148.8	145.2
1985 J	121.8	125.3	150.0	149.6	146.8
1985 F	122.8	126.0	150.4	151.0	147.4
1985 M	123.5	126.6	152.1	152.1	148.8
1985 A	123.4	126.9	152.8	152.7	149.6
1985 M	123.3	126.6	153.2	154.5	151.0
	RATE OF INCREASE OVER ONE MONTH		(T/T-1)	TAUX DE CROISSANCE SUR UN MOIS	
84 A/M	0.2	0.0	0.4	0.6	0.6
84 M/A	-0.2	-0.3	0.1	0.7	1.1
84 J/M	0.3	0.9	0.5	-0.3	0.3
84 J/J	-0.2	-0.2	0.4	0.3	0.4
84 A/J	0.4	0.9	-0.1	0.8	0.4
84 S/A	-0.1	-0.2	0.8	0.6	0.6
84 O/S	0.6	0.2	0.4	0.5	0.6
84 N/S	0.5	0.3	0.2	0.6	0.1
84 D/N	-0.1	0.1	0.4	1.6	0.1
85J/84D	1.0	0.8	0.7	0.5	1.1
85 F/J	0.8	0.5	0.3	0.9	0.4
85 M/F	0.5	0.5	1.1	0.7	0.9
85 A/M	-0.1	0.2	0.4	0.4	0.5
85 M/A	-0.1	-0.3	0.3	1.2	1.0
	RATE OF INCREASE OVER 12 MONTHS		(T/T-12)	TAUX DE CROISSANCE SUR 12 MOIS	
84/83 A	3.2	5.9	6.6	8.8	7.9
84/83 M	2.9	5.9	6.6	9.0	7.3
84/83 J	2.8	6.3	6.4	8.0	6.4
84/83 J	2.8	5.6	6.1	7.4	6.3
84/83 A	2.9	6.0	6.2	7.8	6.7
84/83 S	2.7	5.6	6.1	7.7	6.6
84/83 O	3.1	5.2	6.1	7.3	6.9
84/83 N	3.0	5.3	6.0	7.3	6.0
84/83 D	2.9	5.0	5.9	8.2	6.1
85/84 J	3.5	3.4	5.7	7.3	6.4
85/84 F	4.0	3.4	5.5	8.7	6.4
85/84 M	3.9	3.6	5.5	7.9	6.7
85/84 A	3.6	3.8	5.5	7.7	6.6
85/84 M	3.8	3.8	5.7	8.2	6.4