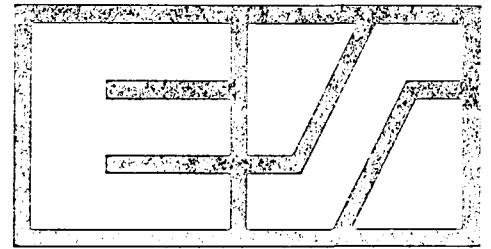


CONSUMER PRICE INDEX



eurostat

RAPID INFORMATION

THE CONSUMER PRICE INDEX IN JANUARY 1985

The consumer price index for the Community as a whole rose by 0.6 % from December 1984 to January 1985.

This represents another break in the steady slowing down of inflation observed since the beginning of last year, following breaks in May and October 1984. The biggest increase was recorded in Greece where prices went up by 2.3 %, whereas prices increased by 1 % in Italy. There were also significant increases in Germany (0.6 %), Belgium (0.6 %), France (0.5 %), Denmark (0.5 %), the United Kingdom (0.4 %) and in Luxemburg (0.3 %).

Only the Netherlands reported a slight decrease (-0.2 %) partly influenced by the effect of the winter sales.

The rate of increase over 12 months (from January 1984 to January 1985) for the EC was 5.5 %.

For the individual countries these rates are as follows (in brackets the same rates for the previous year):

Germany	2.1 % (2.7 %)	Denmark	5.8 % (5.4 %)
Netherlands	2.4 % (3.1 %)	France	6.5 % (9.0 %)
Belgium	5.0 % (6.9 %)	Italy	9.1 % (12.8 %)
United Kingdom	5.0 % (5.1 %)	Greece	19.3 % (20.5 %)

For the applicant Member States the corresponding figures are: Spain 9.0 % and Portugal 24.6 %.

For Portugal an alarming increase of 4.3 % was reported for January 1985.

For the other countries for which EUROSTAT regularly publishes data, the rates are as follows:

USA	3.6 % (4.1 %)	Switzerland	3.5 % (2.6 %)
Canada	3.7 % (5.0 %)	Austria	3.4 % (5.6 %)
Japan	3.3 % (1.8 %)	Norway	5.7 % (6.4 %)
		Sweden	7.3 % (8.2 %)

N.B. The revised index for Luxemburg was not available on base 1980=100 at the closing date of this Bulletin.

1 □ 1985

CONSUMER PRICES

A

PRIX A LA CONSOMMATION

GENERAL INDEX

INDICE GENERAL

	EUR 10	BR DEUTSCH LAND	FRANCE	ITALIA	NEDER= LAND	BELGIQUE BELGIE	LUXEM= BOURG	UNITED KINGDOM	IRELAND	DANMARK	ELLAS	ESPANA	PORTUGAL	USA	CANADA	JAPAN
	PRICE INDICES							1980 = 100		INDICES DE PRIX						
1981 β	111.7	106.3	113.4	117.8	106.7	107.6	108.1	111.9	120.4	111.7	124.5	114.6	120.0	110.3	112.5	104.9
1982 β	123.0	111.9	126.8	137.2	112.8	117.0	118.2	121.5	141.1	123.0	150.5	131.0	146.9	117.1	124.6	107.7
1983 β	132.4	115.6	139.0	157.3	115.9	126.0	128.4	127.1	155.8	131.5	181.4	147.0	184.3	120.9	131.8	109.7
1984 β	140.7	118.4	149.3	174.3	119.6	134.0	135.7	133.4	169.2	139.8	214.6	163.5	238.3	126.1	137.6	112.1
1983 D	136.3	117.0	143.5	165.4	117.6	129.4	133.3	130.0	:	135.2	195.9	155.4	211.3	123.0	134.5	110.3
1984 J	137.1	117.5	144.5	167.4	117.8	130.6	134.0	129.9	:	135.6	198.3	157.6	214.5	123.7	135.2	110.6
1984 F	137.9	117.8	145.4	169.4	118.3	131.6	134.9	130.5	165.1	137.1	199.2	158.2	218.0	124.2	136.0	111.3
1984 M	138.4	117.9	146.4	170.6	118.9	132.2	134.7	130.9	:	137.6	205.5	159.6	226.3	124.5	136.3	111.6
1984 A	139.5	118.1	147.3	171.9	119.4	133.1	135.5	132.6	:	138.0	209.3	160.5	230.7	125.1	136.7	111.9
1984 M	140.1	118.2	148.1	173.0	119.4	133.4	136.1	133.1	168.8	139.4	212.4	161.3	228.6	125.5	136.9	112.7
1984 J	140.6	118.6	148.8	174.0	119.4	133.7	135.3	133.4	:	140.2	216.9	162.5	235.9	125.9	137.5	111.8
1984 J	140.8	118.4	149.8	174.4	119.3	134.5	135.6	133.3	:	139.9	215.0	165.0	242.3	126.3	138.2	112.0
1984 A	141.4	118.2	150.6	175.3	119.4	135.0	135.9	134.5	170.9	140.5	213.9	166.1	246.8	126.8	138.2	111.0
1984 S	142.0	118.3	151.3	176.7	119.9	135.4	135.9	134.8	:	141.5	220.1	166.4	247.5	127.4	138.4	112.8
1984 O	143.0	119.0	152.3	178.4	120.9	136.0	136.8	135.6	:	142.1	225.5	167.4	249.7	127.7	138.6	113.7
1984 N	143.5	119.2	152.8	179.8	121.0	136.1	136.9	136.1	172.1	143.1	228.1	168.2	253.8	127.7	139.5	113.0
1984 D	143.8	119.3	153.1	180.9	120.9	136.4	136.3	135.9	:	142.8	231.3	169.5	256.3	127.8	139.6	113.2
1985 J	144.7	120.0	153.9E	182.7E	120.6	137.2	:	136.4	:	143.5	236.6	:	267.3	128.1	140.2	114.3
	RATE OF INCREASE OVER ONE MONTH (IRELAND 3 MONTHS)							(T/T-1)		TAUX DE CROISSANCE SUR UN MOIS (IRLANDE 3 MOIS)						
83 D/N	0.3	0.3	0.3	0.4	0.0	0.2	0.5	0.3	:	0.0	1.6	1.5	4.0	0.1	0.3	-0.3
84J/83D	0.6	0.4	0.7	1.2	0.2	0.9	0.6	-0.1	:	0.3	1.2	1.4	1.5	0.6	0.5	0.3
84 F/J	0.6	0.3	0.6	1.2	0.4	0.8	0.6	0.4	2.4	1.1	0.4	0.4	1.7	0.5	0.6	0.6
84 M/F	0.5	0.1	0.7	0.7	0.5	0.4	0.1	0.3	:	0.4	3.2	0.9	3.8	0.2	0.2	0.3
84 A/M	0.7	0.2	0.6	0.8	0.4	0.7	0.6	1.3	:	0.3	1.9	0.6	1.9	0.5	0.2	0.3
84 M/A	0.4	0.1	0.5	0.6	0.0	0.2	0.4	0.4	2.2	1.0	1.5	0.5	-0.9	0.3	0.2	0.7
84 J/M	0.4	0.3	0.5	0.6	0.0	0.3	-0.6	0.3	:	0.6	2.1	0.7	3.2	0.3	0.4	-0.8
84 J/J	0.1	-0.2	0.7	0.2	-0.1	0.5	0.2	-0.1	:	-0.2	-0.9	1.5	2.7	0.3	0.6	0.2
84 A/J	0.4	-0.2	0.5	0.5	0.1	0.4	0.2	0.9	1.2	0.4	-0.5	0.7	1.9	0.4	0.0	-0.9
84 S/A	0.4	0.1	0.5	0.8	0.4	0.3	0.0	0.2	:	0.7	2.9	0.2	0.3	0.5	0.1	1.6
84 O/S	0.7	0.6	0.7	1.0	0.8	0.5	0.6	0.6	:	0.4	2.5	0.6	0.9	0.3	0.2	0.8
84 N/S	0.4	0.2	0.3	0.6	0.1	0.0	0.1	0.3	0.7	0.7	1.2	0.4	1.6	0.0	0.6	-0.6
84 D/N	0.2	0.1	0.2	0.7	-0.2	0.2	-0.4	-0.1	:	-0.2	1.4	0.7	1.0	0.1	0.1	0.2
85J/84D	0.6	0.6	0.5E	1.0E	-0.2	0.6	:	0.4	:	0.5	2.3	:	4.3	0.2	0.4	1.0
	RATE OF INCREASE OVER 12 MONTHS							(T/T-12)		TAUX DE CROISSANCE SUR 12 MOIS						
83/82 D	7.2	2.6	9.3	12.6	2.9	7.2	8.0	5.3	:	6.0	20.0	12.2	33.9	3.8	4.5	1.8
84/83 J	7.0	2.7	9.0	12.3	3.1	6.9	7.4	5.1	:	5.4	20.5	11.9	30.7	4.1	5.0	1.8
84/83 F	7.0	2.9	8.9	12.1	3.3	7.1	7.8	5.1	10.2	6.4	18.8	11.8	30.0	4.6	5.5	2.9
84/83 M	7.0	3.1	8.6	11.9	3.7	7.1	7.5	5.2	:	7.0	16.9	12.0	31.8	4.7	4.7	2.5
84/83 A	6.7	3.0	7.9	11.6	3.6	7.5	7.8	5.2	:	6.6	17.1	11.2	31.3	4.5	4.9	2.4
84/83 M	6.6	2.8	7.8	11.3	3.6	7.2	7.7	5.1	9.7	6.5	16.8	11.3	30.4	4.2	4.8	2.0
84/83 J	6.6	2.8	7.7	11.3	3.5	6.8	6.7	5.1	:	6.9	19.1	11.4	32.1	4.2	4.1	1.9
84/83 J	6.1	2.2	7.5	10.7	2.8	6.3	5.4	4.5	:	6.5	19.2	12.8	32.9	4.1	4.2	2.6
84/83 A	6.0	1.7	7.4	10.7	2.7	5.7	4.9	5.0	8.0	6.5	18.9	12.0	31.2	4.2	3.7	1.9
84/83 S	5.7	1.5	7.1	10.1	2.7	5.3	3.9	4.7	:	6.2	17.8	11.3	27.1	4.2	3.8	2.3
84/83 O	5.8	2.1	7.0	9.5	3.0	5.8	3.6	5.0	:	6.0	18.4	10.5	25.8	4.2	3.4	2.2
84/83 N	5.6	2.1	6.9	9.2	2.9	5.3	3.2	4.9	6.8	5.8	18.3	9.9	24.9	4.0	4.0	2.2
84/83 D	5.5	2.0	6.7	9.4	2.8	5.3	2.3	4.6	:	5.6	18.1	9.0	21.3	4.0	3.8	2.6
85/84 J	5.5	2.1	6.5E	9.1E	2.4	5.0	:	5.0	:	5.8	19.3	:	24.6	3.6	3.7	3.3

VERBRAUCHERPREISE
GESAMTINDEX

CONSUMER PRICES
GENERAL INDEX

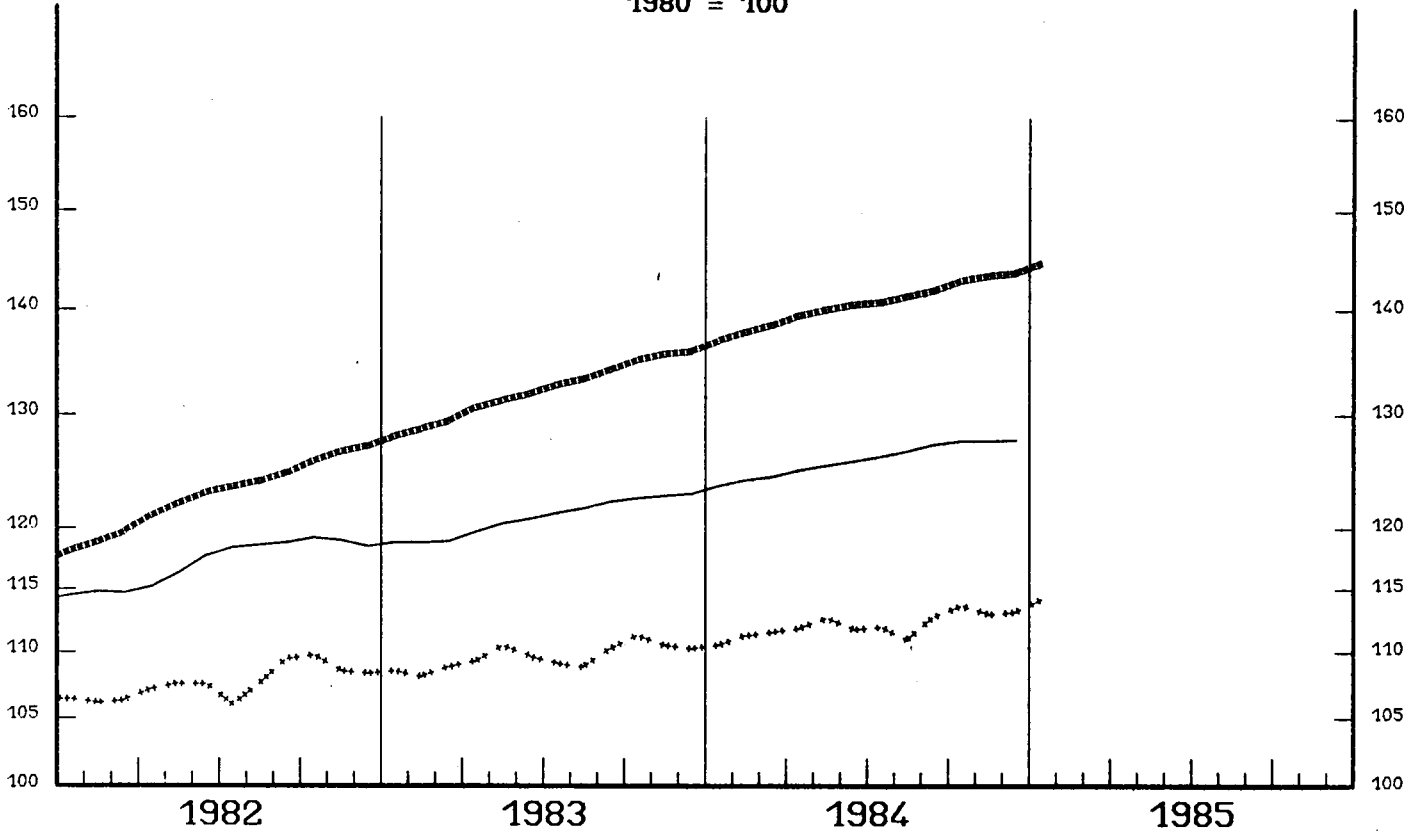
PRIX A LA CONSOMMATION
INDICE GENERAL

— USA

—••••• EUR 10

••••• JAPAN

1980 = 100



EINFACH-LOGARITHMISCHE SKALA

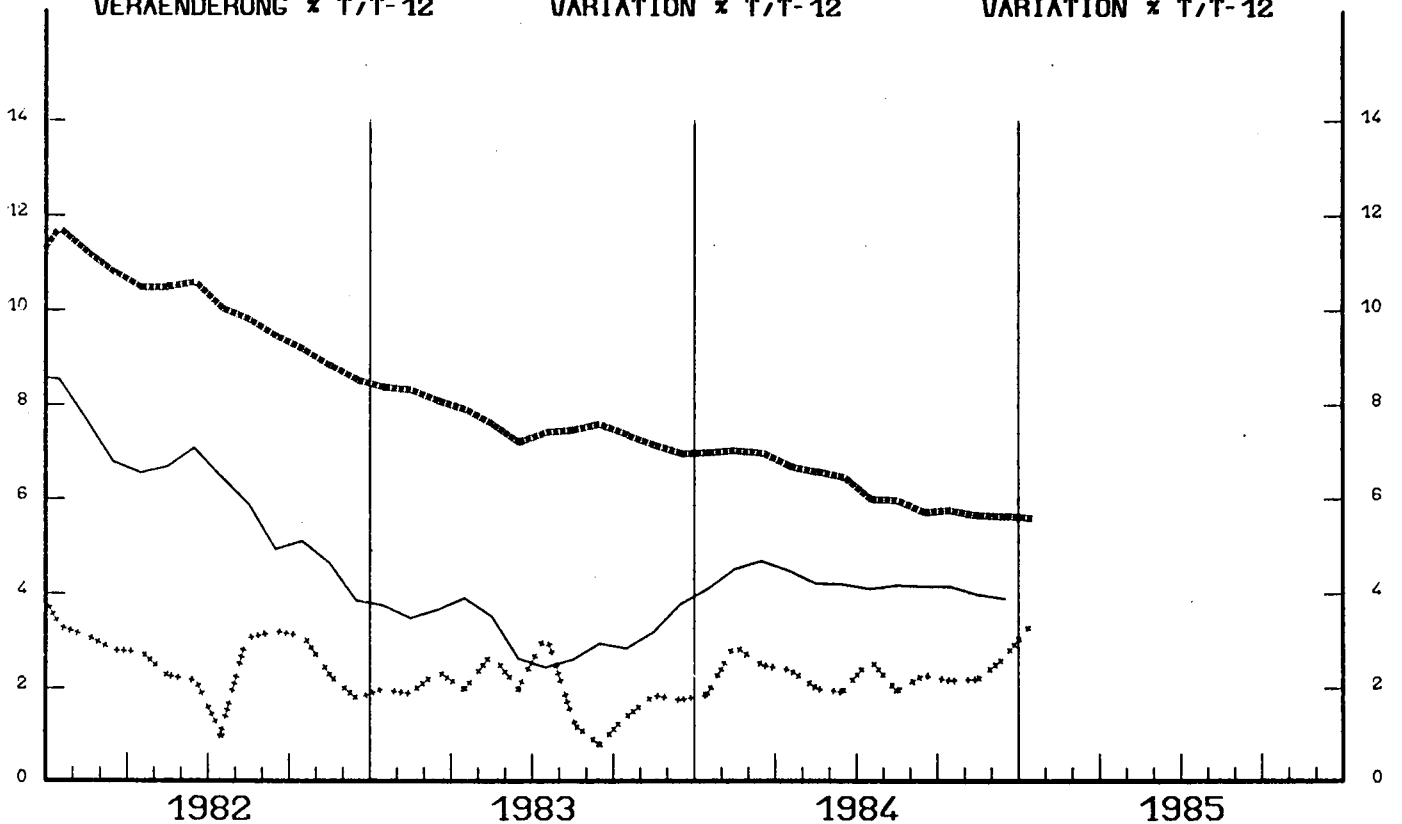
SEMI-LOGARITHMIC SCALE

ECHELLE SEMI-LOGARITHMIQUE

VERÄNDERUNG x T/T-12

VARIATION x T/T-12

VARIATION x T/T-12



CONSUMER PRICES

C

PRIX A LA CONSOMMATION

GENERAL INDEX

INDICE GENERAL

	SWITZERLAND SUISSE SCWEIZ	AUSTRIA AUTRICHE OESTERREICH	NORWAY NORVEGE NORGE	SWEDEN SUEDE SVERIGE
	PRICE INDICES	1980 = 100		INDICES DE PRIX
1981 Ø	106.5	106.8	113.6	112.1
1982 Ø	112.5	112.6	126.5	121.7
1983 Ø	115.8	116.3	137.2	132.5
1984 Ø	119.2	122.9	145.7	143.2
1983 D	117.2	118.3	140.6	137.5
1984 J	117.7	121.2	141.8	139.4
1984 F	118.1	121.8	142.6	138.9
1984 M	118.9	122.2	144.2	140.9
1984 A	119.1	122.2	144.8	141.8
1984 M	118.8	121.9	145.0	142.8
1984 J	119.2	123.0	145.7	142.4
1984 J	119.0	122.7	146.3	142.8
1984 A	119.4	123.9	146.2	143.9
1984 S	119.3	123.7	147.3	144.8
1984 O	120.1	123.9	148.0	145.5
1984 N	120.7	124.2	148.2	146.4
1984 D	120.6	124.3	148.9	148.8
1985 J	121.8	125.3	150.0	149.6
	RATE OF INCREASE OVER ONE MONTH	(T/T-1)	TAUX DE CROISSANCE SUR UN MOIS	
83 D/N	0.0	0.4	0.5	0.8
84J/83D	0.4	2.5	0.9	1.4
84 F/J	0.4	0.5	0.5	-0.4
84 M/F	0.6	0.3	1.1	1.4
84 A/M	0.2	0.0	0.4	0.6
84 M/A	-0.2	-0.3	0.1	0.7
84 J/M	0.3	0.9	0.5	-0.3
84 J/J	-0.2	-0.2	0.4	0.3
84 A/J	0.4	0.9	-0.1	0.8
84 S/A	-0.1	-0.2	0.8	0.6
84 O/S	0.6	0.2	0.4	0.5
84 N/S	0.5	0.3	0.2	0.6
84 D/N	-0.1	0.1	0.4	1.6
85J/84D	1.0	0.8	0.7	0.5
	RATE OF INCREASE OVER 12 MONTHS	(T/T-12)	TAUX DE CROISSANCE SUR 12 MOIS	
83/82 D	2.1	3.8	7.1	9.2
84/83 J	2.6	5.6	6.4	8.2
84/83 F	2.9	5.7	6.5	7.8
84/83 M	3.4	5.8	6.6	9.0
84/83 A	3.2	5.9	6.6	8.8
84/83 M	2.9	5.9	6.6	9.0
84/83 J	2.8	6.3	6.4	8.0
84/83 J	2.8	5.6	6.1	7.4
84/83 A	2.9	6.0	6.2	7.8
84/83 S	2.7	5.6	6.1	7.7
84/83 O	3.1	5.2	6.1	7.3
84/83 N	3.0	5.3	6.0	7.3
84/83 D	2.9	5.0	5.9	8.2
85/84 J	3.5	3.4	5.7	7.3