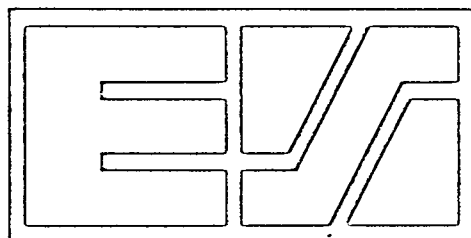


# CONSUMER PRICE INDEX



eurostat

## RAPID INFORMATION

### THE CONSUMER PRICE INDEX IN SEPTEMBER 1984

The consumer price index for the EC as a whole rose by 0.5% from August to September 1984.

Increases were moderate in most of the Member States and were situated between 0.1 and 0.7%, while even a slight decrease was recorded in Luxembourg (-0.1%). Only in Greece was a fairly sizable increase recorded (+2.8%)\*

The rate of increase over the year for the EC as a whole is 6.6% (Sept. 1983 = 8.5%). The rates for the individual countries show the slowing down of inflation in most of the Member States as well as in some other countries.

	<u>1984</u>	<u>1983</u>		<u>1984</u>	<u>1983</u>
Germany (FR)	1.5	3.2	Denmark	6.1*	6.0
Netherlands	2.7	2.4	France	7.1	10.0
Luxembourg	3.9	8.6	Ireland	7.9	10.0
United Kingdom	4.7	5.1	Italy	9.7	13.3
Belgium	5.3	7.3	Greece	17.7*	21.3

The corresponding figures for some other countries:

	<u>1984</u>	<u>1983</u>		<u>1984</u>	<u>1983</u>
Spain	12.0	11.0	Switzerland	2.7	1.4
Portugal	27.1	28.5	Austria	6.0*	3.3
USA	4.0*	2.9	Norway	6.2*	7.8
Canada	3.9*	4.9	Sweden	7.7	9.4
Japan	2.1	0.7			

\*Estimates by EUROSTAT.

Attention: Please see also the graphs on pages 3 and 4 which show the situation of each country compared with EUR-10.

Latest data: 18.10.84

Also available in FR

9 □ 1984

CONSUMER PRICES  
GENERAL INDEX

A

PRIX A LA CONSOMMATION  
INDICE GENERAL

	EUR10	BR DEUTSCH LAND	FRANCE	ITALIA	NEDER- LAND	BELGIQUE BELGIE	LUXEM- BOURG	UNITED KINGDOM	IRELAND	DANMARK	ELLAS	ESPAÑA	PORTU- GAL	USA	CANADA	JAPAN
	PRICE INDICES 1975 = 100								INDICES DE PRIX							
1979 Ø	146.4	115.6	144.8	177.9	126.1	127.6	126.3	165.8	163.4	146.1	170.3	202.9	231.8	134.9	138.1	127.0
1980 Ø	167.4	122.0	164.5	215.7	134.9	136.1	134.2	195.6	193.2	164.0	212.6	234.5	270.2	153.1	152.1	137.2
1981 Ø	188.9	129.2	186.5	257.8	144.1	146.5	145.1	218.9	232.6	183.3	264.7	268.6	324.2	168.9	171.0	144.0
1982 Ø	209.7	136.1	208.9	300.2	152.7	159.2	158.6	237.7	272.5	201.9	320.1	310.0	396.7	179.3	189.5	147.8
1983 Ø	227.5	140.0	228.5	344.3	157.0	171.4	172.4	248.6	300.2	215.8	385.8	344.7	497.9	185.1	200.5	150.3
1983 J	228.3	141.1	229.2	344.9	157.1	172.1	172.7	249.6		215.3	383.7	343.1	492.5	185.6	201.7	149.7
1983 A	229.3	141.6	230.6	346.6	157.5	173.7	173.9	250.7	305.9	216.3	382.7	347.7	508.5	186.3	202.7	149.3
1983 S	231.3	141.9	232.3	351.2	158.1	174.9	175.6	251.9		218.6	397.1	350.5	526.7	187.2	202.7	151.2
1983 O	233.1	141.9	234.2	356.5	159.0	174.9	177.2	252.7		219.8	404.9	355.2	536.1	187.7	203.9	152.6
1983 N	234.4	142.2	235.2	360.4	159.2	175.8	178.1	253.6	311.5	221.8	410.0	358.9	548.7	188.0	203.9	151.7
1983 D	235.2	142.5	235.7	361.9	159.2	176.1	178.9	254.3		221.8	416.6	364.4	570.8	188.2	204.5	151.2
1984 J	236.8	143.2	237.6	366.3	159.5	177.8	179.9	254.2		222.5	421.7	369.5	579.4	189.3	205.6	151.7
1984 F	238.4	143.6	239.2	370.7	160.2	179.1	181.1	255.2	318.9	224.9	423.5	371.0	588.9	190.2	206.8	152.6
1984 M	239.7	143.7	240.7	373.3	161.0	179.9	180.8	256.0		225.8	436.9	374.2	611.3	190.6	207.3	153.0
1984 A	241.7	143.9	242.2	376.2	161.7	181.1	181.9	259.4		226.5	445.1	376.3	623.7	191.5	207.8	153.4
1984 M	242.8	144.0	243.6	378.6	161.7	181.5	182.8	260.4	326.2	228.8	451.8	378.3	617.4	192.1	208.2	154.5
1984 J	243.9	144.4	244.8	380.8	161.7	182.0	181.6	261.0		230.0	451.3	381.0	637.0	192.7	209.0	153.3
1984 J	244.3	144.3	246.4	381.6	161.5	183.0	182.0	260.8		229.5	457.1	386.9	654.4	193.3	210.3	153.6
1984 A	245.2	144.0	247.7	382.7	161.7	183.7	182.5	263.1	330.1	230.4	454.8	389.6	666.6	194.1	210.3	152.2
1984 S	246.4	144.1	248.9	385.4	162.3	184.2	182.4	263.7		232.0	467.5	:	668.6	:	:	154.3
	RATE OF INCREASE OVER ONE MONTH (IRELAND 3 MONTHS) (T/T-1) TAUX DE CROISSANCE SUR UN MOIS (IRLANDE 3 MOIS)															
83J/83J	0.6	0.3	0.9	0.8	0.5	1.0	1.5	0.5		0.0	-0.9	0.3	2.2	0.4	0.5	-0.5
83A/83J	0.5	0.4	0.6	0.5	0.3	1.0	0.7	0.4	2.9	0.5	-0.3	1.3	3.2	0.3	0.5	-0.3
83S/83A	0.8	0.2	0.7	1.3	0.4	0.7	1.0	0.5		1.1	3.8	0.8	3.5	0.5	0.0	1.3
83O/83S	0.8	0.0	0.8	1.5	0.6	0.0	0.9	0.3		0.5	2.0	1.3	1.9	0.3	0.6	0.9
83N/83O	0.6	0.2	0.4	1.1	0.1	0.5	0.5	0.4	1.8	0.9	1.3	1.0	2.4	0.2	0.0	-0.6
83D/83N	0.3	0.2	0.3	0.4	0.0	0.2	0.5	0.3		0.0	1.6	1.5	4.0	0.1	0.3	-0.3
84J/83D	0.7	0.4	0.7	1.2	0.2	0.9	0.6	-0.0		0.3	1.2	1.4	1.5	0.6	0.5	0.3
84F/84J	0.7	0.3	0.7	1.2	0.4	0.8	0.6	0.4	2.4	1.1	0.4	0.4	1.6	0.5	0.6	0.6
84M/84F	0.6	0.1	0.6	0.7	0.5	0.4	-0.1	0.3		0.4	3.2	0.9	3.8	0.2	0.2	0.3
84A/84M	0.8	0.1	0.6	0.8	0.4	0.7	0.6	1.3		0.3	1.9	0.6	2.0	0.5	0.2	0.3
84M/84A	0.5	0.1	0.6	0.6	0.0	0.2	0.4	0.4	2.3	1.0	1.5	0.5	-1.0	0.3	0.2	0.7
84J/84M	0.5	0.3	0.5	0.6	0.0	0.3	-0.6	0.2		0.5	2.1	0.7	3.2	0.3	0.4	-0.8
84J/84J	0.2	-0.1	0.7	0.2	-0.1	0.5	0.2	-0.1		-0.2	-0.9	1.5	2.7	0.3	0.6	0.2
84A/84J	0.4	-0.2	0.5	0.3	0.1	0.4	0.2	0.9	1.2	0.4	-0.5	0.7	1.9	0.4	0.0	-0.9
84S/84A	0.5	0.1	0.5	0.7	0.4	0.3	-0.0	0.2		0.7	2.8	:	0.3	:	:	1.4
	RATE OF INCREASE OVER 12 MONTHS (T/T-12) TAUX DE CROISSANCE SUR 12 MOIS															
83/82J	8.4	2.8	9.5	15.0	2.6	7.5	8.1	4.2		6.2	18.7	10.3	24.1	2.4	5.5	2.2
83/82A	8.3	3.3	9.8	13.5	2.7	7.9	8.3	4.6	10.0	6.0	20.0	11.0	25.9	2.6	5.5	1.2
83/82S	8.5	3.2	10.0	13.3	2.4	7.3	8.6	5.1		6.0	21.3	11.8	28.5	2.9	4.9	0.7
83/82O	8.4	2.7	10.4	13.1	2.5	6.5	8.4	5.0		5.3	20.8	12.1	30.1	2.9	4.9	1.3
83/82N	8.1	2.6	9.8	12.8	2.7	6.9	7.9	4.8	10.3	5.5	19.9	13.0	32.0	3.2	4.2	1.8
83/82D	8.1	2.6	9.2	12.6	2.9	7.2	8.0	5.3		6.0	20.0	12.2	33.9	3.8	4.5	1.7
84/83J	8.0	2.7	9.0	12.3	3.0	6.9	7.4	5.2		5.5	20.5	11.9	30.6	4.1	5.4	1.8
84/83F	8.0	2.9	8.9	12.1	3.4	7.1	7.8	5.1	10.2	6.4	18.8	11.8	30.0	4.6	5.5	2.8
84/83M	7.9	3.1	8.8	11.9	3.7	7.1	7.5	5.3		7.1	16.9	12.0	31.8	4.7	4.7	2.5
84/83A	7.7	3.0	7.9	11.6	3.7	7.5	7.8	5.2		6.6	17.1	11.2	31.4	4.5	4.9	2.3
84/83M	7.5	2.8	7.8	11.3	3.6	7.2	7.7	5.1	9.7	6.6	16.8	11.3	30.4	4.2	4.8	2.0
84/83J	7.5	2.7	7.7	11.3	3.5	6.8	6.7	5.1		6.8	19.1	11.4	32.1	4.2	4.1	1.9
84/83J	7.0	2.3	7.5	10.6	2.8	6.3	5.4	4.5		6.6	19.2	12.8	32.9	4.1	4.3	2.6
84/83A	6.9	1.7	7.4	10.4	2.7	5.7	4.9	4.9	7.9	6.5	18.9	12.0	31.1	4.2	3.7	1.9
84/83S	6.6	1.5	7.1	9.7	2.7	5.3	3.9	4.7		6.1	17.7	:	27.1	:	:	2.1

2

VERBRAUCHERPREISE  
GESAMTINDEX

CONSUMER PRICES  
GENERAL INDEX

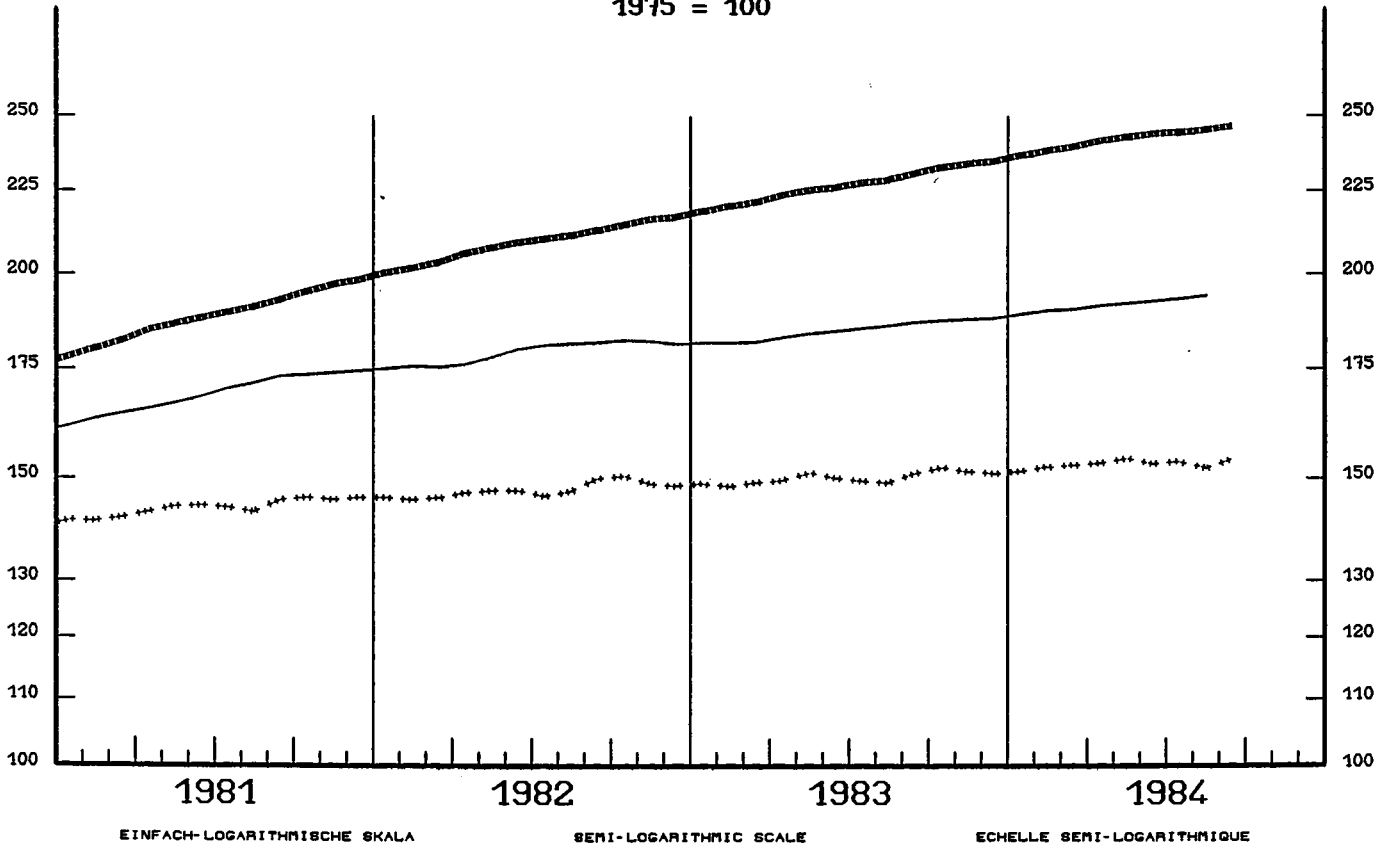
PRIX A LA CONSOMMATION  
INDICE GENERAL

— USA

— EUR 10

\*\*\* JAPAN

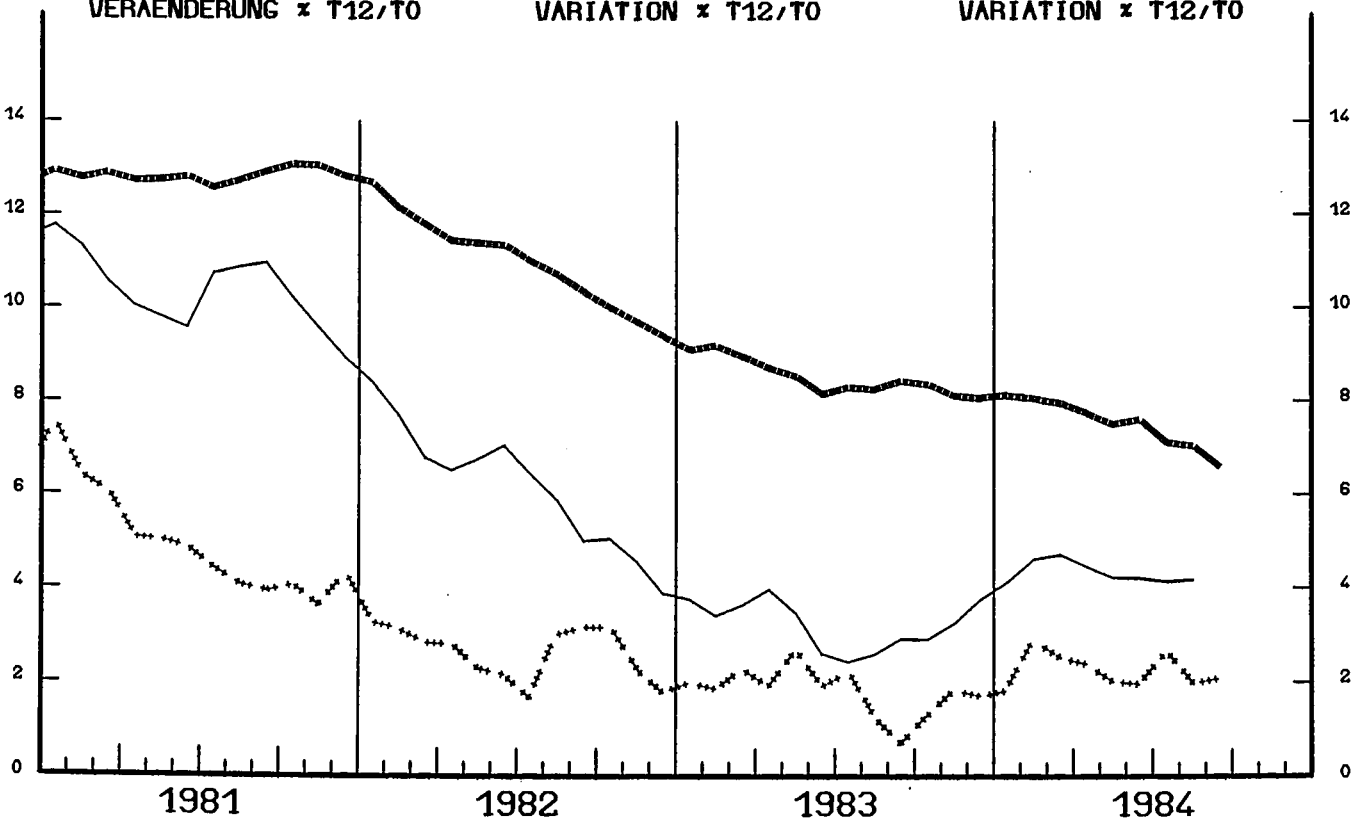
1975 = 100



VERÄNDERUNG x T12/T0

VARIATION x T12/T0

VARIATION x T12/T0

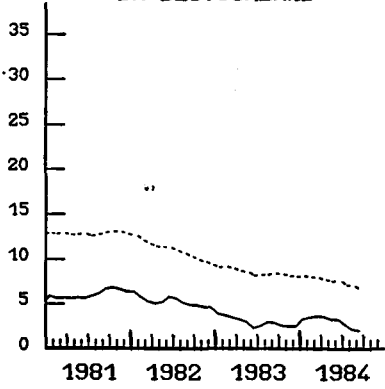


**VERBRAUCHERPREISE**  
**GESAMTINDEX**  
 VERAENDERUNG \* T12/T0

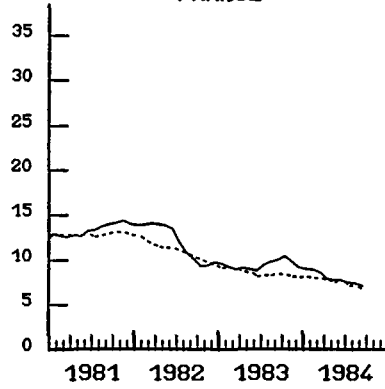
**CONSUMER PRICES**  
**GENERAL INDEX**  
 VARIATION \* T12/T0

**PRIX A LA CONSOMMATION**  
**INDICE GENERAL**  
 VARIATION \* T12/T0

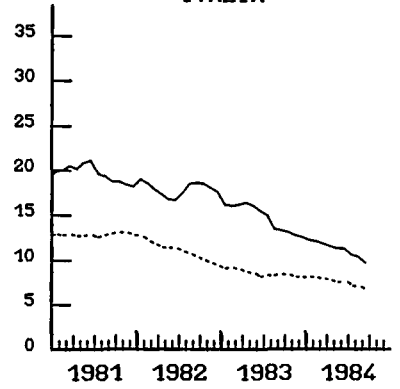
**BR DEUTSCHLAND**



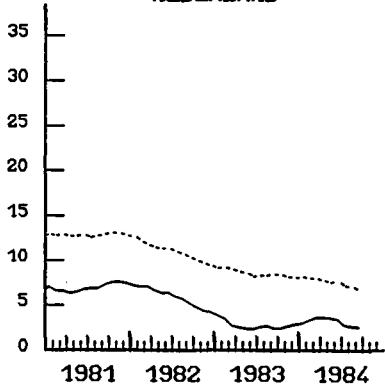
**FRANCE**



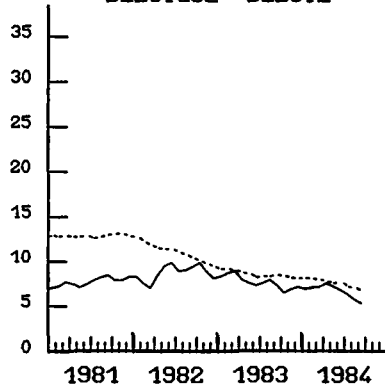
**ITALIA**



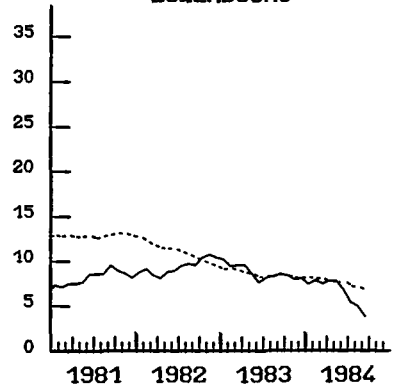
**NEDERLAND**



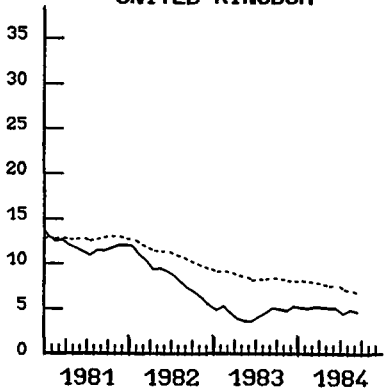
**BELGIQUE BELGIE**



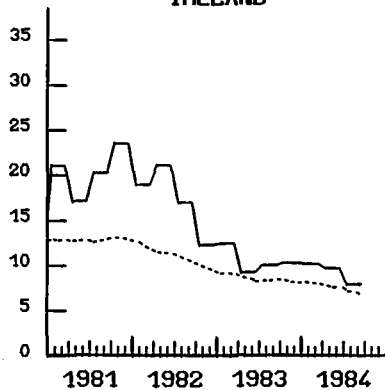
**LUXEMBOURG**



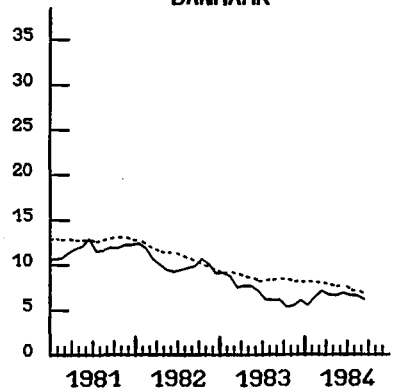
**UNITED KINGDOM**



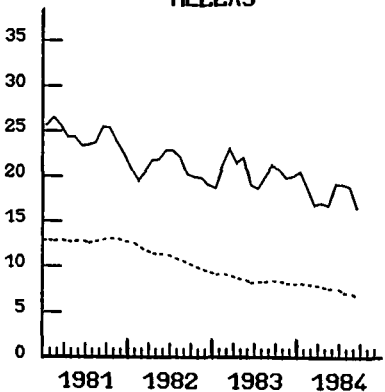
**IRELAND**



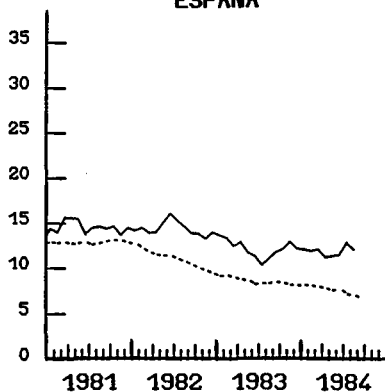
**DANMARK**



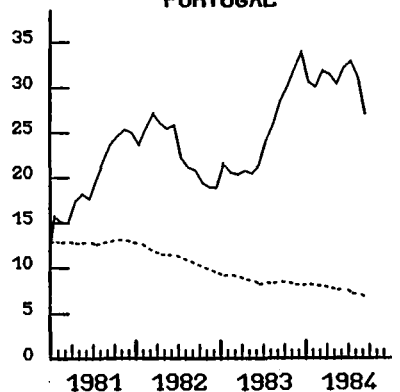
**HELLAS**



**ESPANA**



**PORTUGAL**



CONSUMER PRICES

FOOD(EXCL. DRINKS AND MEALS OUT)

B

PRIX A LA CONSOMMATION

PRODUITS ALIMENTAIRES(SANS BOISSONS ET REPAS A L'EXTERIEUR)

	EUR10	BR DEUTSCH LAND	FRANCE	ITALIA	NEDER- LAND	BELGIQUE BELGIE	LUXEM- BOURG	UNITED KINGDOM	IRELAND	DANMARK	ELLAS	ESPANA	PORTU- GAL	USA	
	PRICE INDICES 1975 = 100								INDICES DE PRIX						
1979 Ø	150.9	111.2	147.1	183.3	120.5	120.7	124.4	172.3	170.4	147.8	176.2	191.8	256.5	133.7	
1980 Ø	168.2	116.1	161.3	212.7	125.1	125.3	128.8	192.6	186.2	162.6	224.8	209.3	295.2	145.2	
1981 Ø	189.9	122.0	183.8	250.7	131.9	132.6	138.0	209.0	212.6	182.3	292.5	237.7	354.9	156.6	
1982 Ø	211.9	127.8	207.0	289.0	139.1	145.7	154.1	226.2	238.4	201.2	354.1	273.4	439.1	162.9	
1983 Ø	229.0	129.9	226.0	322.8	139.2	157.9	166.5	233.3	255.7	211.8	418.2	302.6	558.0	166.3	
1983 J	228.2	130.7	222.9	323.5	139.0	156.6	165.7	233.3		210.0	402.1	297.6	550.2	166.5	
1983 A	229.2	129.6	225.3	323.5	139.3	158.6	167.0	233.8	264.2	212.0	413.3	306.3	573.8	166.6	
1983 S	232.1	129.6	228.6	327.0	139.5	162.8	169.0	236.6		216.0	429.4	307.2	596.7	166.8	
1983 O	234.2	129.6	231.1	330.6	140.6	163.7	171.6	237.8		218.0	433.5	312.7	606.8	167.0	
1983 N	236.1	130.0	232.7	334.1	141.6	164.2	172.7	238.9	267.0	219.0	441.9	316.5	625.4	166.8	
1983 D	237.9	130.5	234.3	336.5	142.0	165.2	173.6	241.0		220.0	449.6	323.6	665.5	167.6	
1984 J	239.1	131.5	235.8	339.1	142.6	164.9	174.6	242.0		221.0	457.1	330.3	676.6	170.7	
1984 F	240.9	132.7	237.5	342.5	142.9	166.4	175.6	242.5	272.8	224.0	462.1	328.7	680.9	172.2	
1984 M	243.1	133.5	239.2	345.5	144.0	168.7	176.7	244.5		229.0	471.6	330.7	717.5	172.3	
1984 A	245.3	133.8	240.5	348.6	144.4	170.2	177.8	247.0		231.0	482.8	330.3	729.6	172.3	
1984 M	247.2	133.8	241.8	351.2	143.8	170.1	179.2	249.0	286.5	231.0	498.1	331.3	708.8	171.8	
1984 J	248.8	134.5	243.2	353.7	143.6	170.8	179.1	250.0		231.0	508.1	335.3	727.8	172.2	
1984 J	:	133.5	245.0	354.2	143.4	171.9	179.8	:		231.0	490.4	347.3	756.3	172.9	
1984 A	:	131.5	246.5	:	143.4	173.3	180.1	:	284.8	232.0	497.9	:	776.8	173.8	
1984 S	:	:	:	:	:	:	:	:	:	:	:	:	:	:	
	RATE OF INCREASE OVER ONE MONTH (IRELAND 3 MONTHS) (T/T-1)								TAUX DE CROISSANCE SUR UN MOIS (IRLANDE 3 MOIS)						
83J/83J	0.5	-0.5	0.9	0.2	0.3	1.0	1.0	0.0		0.5	-3.5	0.0	1.9	0.0	
83A/83J	0.4	-0.8	1.1	0.0	0.2	1.3	0.8	0.2	6.9	1.0	2.8	2.9	4.3	0.1	
83S/83A	1.3	0.0	1.5	1.1	0.1	2.6	1.2	1.2		1.9	3.9	0.3	4.0	0.1	
83O/83S	0.9	0.0	1.1	1.1	0.8	0.6	1.5	0.5		0.9	0.9	1.8	1.7	0.1	
83N/83O	0.8	0.3	0.7	1.1	0.7	0.3	0.6	0.5	1.1	0.5	2.0	1.2	3.1	-0.1	
83D/83N	0.8	0.4	0.7	0.7	0.3	0.6	0.5	0.9		0.5	1.7	2.2	6.4	0.5	
84J/83D	0.5	0.8	0.6	0.8	0.4	-0.2	0.6	0.4		0.5	1.7	2.1	1.7	1.9	
84F/84J	0.8	0.9	0.7	1.0	0.2	0.9	0.6	0.2	2.2	1.4	1.1	-0.5	0.6	0.9	
84M/84F	0.9	0.6	0.7	0.9	0.8	1.4	0.6	0.8		2.2	2.1	0.6	5.4	0.0	
84A/84M	0.9	0.2	0.5	0.9	0.3	0.9	0.6	1.0		0.9	2.4	-0.1	1.7	0.0	
84M/84A	0.7	0.0	0.5	0.7	-0.4	-0.1	0.8	0.8	5.0	0.0	3.2	0.3	-2.9	-0.3	
84J/84M	0.7	0.5	0.6	0.7	-0.1	0.4	-0.1	0.4		0.0	2.0	1.2	2.7	0.2	
84J/84J	:	-0.7	0.7	0.1	-0.1	0.6	0.4	:		0.0	-3.5	3.6	3.9	0.4	
84A/84J	:	-1.5	0.6	:	0.0	0.8	0.2	:	-0.6	0.4	1.5	:	2.7	0.5	
84S/84A	:	:	:	:	:	:	:	:	:	:	:	:	:	:	
	RATE OF INCREASE OVER 12 MONTHS (T/T-12)								TAUX DE CROISSANCE SUR 12 MOIS						
83/82J	7.3	0.7	7.9	11.8	-1.3	7.0	6.5	3.0		3.4	12.8	6.4	25.8	1.2	
83/82A	8.0	1.8	8.7	10.3	-0.4	7.6	6.4	4.7	9.6	3.4	18.5	8.1	27.7	1.7	
83/82S	8.5	2.3	9.8	9.5	0.1	8.8	6.6	5.9		4.3	20.4	9.7	30.5	1.7	
83/82O	8.9	2.9	10.4	9.3	1.8	9.6	7.5	5.2		5.3	19.4	10.5	33.4	2.1	
83/82N	8.9	2.7	10.1	9.6	2.5	9.9	7.5	6.0	9.7	5.3	16.7	12.9	36.5	2.1	
83/82D	9.1	2.8	10.1	9.5	3.0	10.1	7.3	6.5		6.3	17.5	12.7	38.9	2.6	
84/83J	8.9	2.7	10.1	9.4	3.0	8.1	8.0	6.2		6.3	19.5	12.7	37.1	3.9	
84/83F	9.0	2.8	10.1	9.6	3.7	8.1	7.9	6.4	11.6	8.2	18.1	13.0	35.7	4.5	
84/83M	9.0	3.2	10.0	9.6	4.3	9.5	8.3	7.1		10.6	15.0	13.1	38.0	4.0	
84/83A	9.1	2.7	9.7	9.6	4.7	10.2	8.9	7.4		11.1	14.6	11.2	36.3	3.6	
84/83M	9.5	2.5	10.1	9.8	4.2	10.3	9.3	7.9	15.9	11.1	16.6	11.7	34.2	3.1	
84/83J	9.6	2.4	10.1	9.6	3.6	10.2	9.1	7.2		10.5	22.0	12.7	34.8	3.4	
84/83J	:	2.1	9.9	9.5	3.2	9.8	8.5	:		10.0	22.0	16.7	37.5	3.8	
84/83A	:	1.5	9.4	:	2.9	9.3	7.8	:	7.8	9.4	20.5	:	35.4	4.3	
84/83S	:	:	:	:	:	:	:	:	:	:	:	:	:	:	

5

## CONSUMER PRICES

C

## PRIX A LA CONSOMMATION

## DRINKS(HOME CONSUMPTION)AND TOBACCO

## BOISSONS(CONSOMMATION A DOMICILE)ET TABAC

	EUR10	BR DEUTSCH LAND	FRANCE	ITALIA	NEDER- LAND	BELGIQUE BELGIE	LUXEM- BOURG	UNITED KINGDOM	IRELAND	DANMARK	ELLAS	ESPAÑA	PORTU- GAL	USA	
	PRICE INDICES				1975 = 100				INDICES DE PRIX						
1979 Ø	137.5	113.2	143.5	152.4	116.0	131.7	131.3	159.1	146.3	144.0	136.9	:	294.8	121.8	
1980 Ø	152.5	116.1	158.8	175.6	128.8	135.8	133.6	185.9	182.1	155.2	158.4	:	242.7	131.4	
1981 Ø	172.4	120.3	181.6	206.3	135.8	147.7	148.5	221.2	237.6	163.7	183.0	:	291.4	141.4	
1982 Ø	198.8	134.3	209.1	255.0	144.6	161.8	167.5	248.4	294.2	172.8	225.2	:	355.9	153.1	
1983 Ø	217.7	139.3	228.3	295.2	150.3	178.9	182.9	263.5	338.1	197.2	269.1	:	385.3	172.8	
1983 J	221.4	138.2	232.8	307.8	150.1	178.2	180.4	265.7		198.0	273.5	:	395.5	174.3	
1983 A	222.0	138.2	233.3	308.7	150.8	179.7	187.1	266.4	343.0	199.0	274.0	:	395.8	175.4	
1983 S	222.7	138.6	233.9	310.1	151.4	181.9	190.2	266.5		199.0	276.4	:	396.5	175.9	
1983 O	223.2	138.7	234.3	311.3	151.9	182.9	190.9	266.3		201.0	277.9	:	401.4	176.4	
1983 N	223.7	138.7	234.8	312.4	151.9	183.1	191.1	267.0	344.5	202.0	278.7	:	404.7	176.7	
1983 D	223.9	138.8	235.2	313.1	151.8	183.2	191.3	266.1		203.0	280.2	:	410.3	176.5	
1984 J	225.8	138.9	238.9	314.1	154.4	185.6	191.3	268.5		207.0	280.8	:	416.7	178.4	
1984 F	:	138.9	240.7	315.4	160.2	186.5	191.4		360.4	209.0	277.9	:	420.0	176.3	
1984 M	:	138.9	241.9	316.8	162.9	187.7	196.7	:		209.0	326.0	:	422.6	179.4	
1984 A	:	139.0	244.0	318.0	163.3	188.5	196.7	:		209.0	327.0	:	453.3	179.7	
1984 M	:	139.1	246.1	318.7	163.3	189.2	196.8	:	363.9	209.0	326.8	:	452.0	179.7	
1984 J	:	139.0	246.7	319.6	163.5	190.0	196.7	:		215.0	326.9	:	461.3	180.8	
1984 J	:	139.0	241.8	320.1	162.9	190.6	196.8	:		215.0	327.8	:	464.2	182.7	
1984 A	:	139.3	239.9	:	162.9	191.2	197.0	:	366.8	215.0	329.6	:	469.0	183.1	
1984 S	:	:	:	:	:	:	:	:	:	:	:	:	:	:	
	RATE OF INCREASE OVER ONE MONTH (IRELAND 3 MONTHS) (T/T-1) TAUX DE CROISSANCE SUR UN MOIS (IRLANDE 3 MOIS)														
83J/83J	3.0	0.1	2.6	8.8	0.2	0.3	0.7	0.0		0.0	0.2	:	1.1	1.9	
83A/83J	0.3	0.0	0.2	0.3	0.5	0.8	3.7	0.3	2.7	0.5	0.2	:	0.1	0.6	
83S/83A	0.3	0.3	0.3	0.5	0.4	1.2	1.7	0.0		0.0	0.9	:	0.2	0.3	
83O/83S	0.2	0.1	0.2	0.4	0.3	0.5	0.4	-0.1		1.0	0.5	:	1.2	0.3	
83N/83O	0.2	0.0	0.2	0.4	0.0	0.1	0.1	0.3	0.4	0.5	0.3	:	0.8	0.1	
83D/83N	0.1	0.1	0.2	0.2	-0.1	0.1	0.1	-0.3		0.5	0.6	:	1.4	-0.1	
84J/83D	0.9	0.1	1.6	0.3	1.7	1.3	0.0	0.9		2.0	0.2	:	1.6	1.1	
84F/84J	:	0.0	0.8	0.4	3.8	0.5	0.1	:	4.6	1.0	-1.1	:	0.8	-1.2	
84M/84F	:	0.0	0.5	0.4	1.7	0.6	2.8	:		0.0	17.3	:	0.6	1.8	
84A/84M	:	0.1	0.9	0.4	0.2	0.4	0.0	:		0.0	0.3	:	7.3	0.2	
84M/84A	:	0.1	0.9	0.2	0.0	0.4	0.1	:	1.0	0.0	-0.1	:	-0.3	0.0	
84J/84M	:	-0.1	0.2	0.3	0.1	0.4	-0.1	:		2.9	0.0	:	2.1	0.6	
84J/84J	:	0.0	-2.0	0.2	-0.4	0.3	0.1	:		0.0	0.3	:	0.6	1.0	
84A/84J	:	0.2	-0.8	:	0.0	0.3	0.1	:	0.8	0.0	0.6	:	1.0	0.2	
84S/84A	:	:	:	:	:	:	:	:		:	:	:	:	:	
	RATE OF INCREASE OVER 12 MONTHS (T/T-12) TAUX DE CROISSANCE SUR 12 MOIS														
83/82J	8.5	-1.4	10.1	15.4	4.5	9.3	7.7	5.2		15.1	16.0	:	9.3	14.8	
83/82A	8.5	-1.5	10.2	15.3	4.3	9.6	11.5	5.5	12.2	15.0	16.2	:	9.1	15.1	
83/82S	8.5	-1.3	10.3	14.7	3.7	10.4	13.0	5.7		13.7	17.0	:	9.2	13.6	
83/82O	8.1	-1.4	10.3	14.4	3.3	10.8	9.3	4.2		12.9	17.3	:	10.3	11.1	
83/82N	8.2	-1.5	10.4	14.2	3.3	10.5	9.3	5.2	11.6	12.8	17.6	:	11.5	9.5	
83/82D	8.0	-1.4	10.3	13.9	1.7	7.4	9.2	5.2		12.8	17.7	:	12.6	7.4	
84/83J	8.0	-1.5	11.0	13.6	3.3	7.1	9.0	5.4		8.4	17.8	:	15.2	6.6	
84/83F	:	-1.3	9.6	13.5	7.2	6.6	9.1	:	8.9	9.4	14.9	:	15.4	4.5	
84/83M	:	-0.9	9.1	13.3	9.1	6.6	12.0	:		9.4	20.2	:	15.0	5.8	
84/83A	:	-0.7	8.2	13.2	9.5	6.7	9.8	:		6.1	20.4	:	22.8	5.4	
84/83M	:	-0.7	8.7	13.1	9.5	6.7	9.8	:	9.0	6.1	20.2	:	22.7	5.3	
84/83J	:	0.7	8.7	13.0	9.1	6.9	9.8	:		8.6	19.7	:	17.9	5.7	
84/83J	:	0.6	3.9	4.0	8.5	7.0	9.1	:		8.6	19.8	:	17.4	4.8	
84/83A	:	0.8	2.8	:	8.0	6.4	5.3	:	6.9	8.0	20.3	:	18.5	4.4	
84/83S	:	:	:	:	:	:	:	:		:	:	:	:	:	

## CONSUMER PRICES

D

## PRIX A LA CONSOMMATION

## CLOTHING AND FOOTWEAR(INCL. REPAIRS)

## HABILLEMENT ET CHAUSSURES(Y COMPRIS REPARATIONS)

	EUR10	BR DEUTSCH LAND	FRANCE	ITALIA	NEDER- LAND	BELGIQUE BELGIE	LUXEM- BOURG	UNITED KINGDOM	IRELAND	DANMARK	ELLAS	ESPANA	PORTU- GAL	USA
	PRICE INDICES 1975 = 100 INDICES DE PRIX													
1979 Ø	143.7	118.1	143.8	186.1	126.0	124.3	128.5	149.5	156.6	136.0	178.7	225.4	180.7	117.1
1980 Ø	160.3	124.9	160.0	224.7	134.4	127.5	138.2	164.3	179.7	143.9	212.1	271.6	242.9	125.4
1981 Ø	174.6	131.1	175.3	264.0	138.7	133.2	148.2	166.8	205.6	152.1	257.7	308.5	286.8	131.3
1982 Ø	190.5	137.0	192.3	306.4	145.6	141.3	155.9	168.8	227.5	161.3	329.3	347.9	338.4	134.8
1983 Ø	206.4	141.2	211.9	348.1	147.2	150.4	165.9	172.2	237.5	169.6	412.8	389.5	405.4	138.1
1983 J	205.4	141.5	212.4	345.7	135.6	150.9	165.4	171.1		164.0	422.2	389.1	396.5	137.0
1983 A	205.2	141.5	213.2	345.7	138.2	150.9	166.4	172.9	237.4	166.0	386.0	389.8	403.4	138.7
1983 S	208.7	142.1	215.4	352.7	147.0	151.4	167.1	173.1		174.0	423.3	394.3	410.0	140.8
1983 O	212.6	142.4	218.6	361.9	155.5	152.2	168.7	173.6		175.0	461.2	402.8	420.2	141.0
1983 N	214.8	142.8	221.6	368.0	155.0	153.0	169.8	174.8	242.1	176.0	466.0	409.3	428.5	141.0
1983 D	215.4	142.9	222.9	370.3	152.1	153.9	170.9	174.1		175.0	473.1	412.7	439.0	140.1
1984 J	214.4	143.2	223.9	371.4	141.3	155.4	170.9	168.9		168.0	478.4	414.0	446.7	138.0
1984 F	:	143.5	225.2	373.7	144.8	156.5	171.5	:	243.8	177.0	443.3	416.0	454.5	137.9
1984 M	:	144.0	227.8	376.8	149.4	157.4	172.1	:		178.0	479.3	420.4	464.5	139.7
1984 A	:	144.3	230.2	381.1	152.5	158.1	172.5	:		180.0	487.1	425.4	473.3	140.0
1984 M	:	144.8	231.9	382.9	152.4	158.5	175.3	:	255.2	180.0	489.6	428.5	478.4	139.8
1984 J	:	144.8	232.9	384.0	150.8	159.0	175.6	:		180.0	530.9	430.2	484.6	138.7
1984 J	:	144.8	233.7	384.9	138.9	159.4	175.9	:		172.0	524.0	431.8	486.9	138.2
1984 A	:	145.0	234.4	:	139.4	159.5	176.2	:	258.8	178.0	484.8	:	490.8	140.6
1984 S	:	:	:	:	:	:	:	:	:	:	:	:	:	:
	RATE OF INCREASE OVER ONE MONTH (IRELAND 3 MONTHS) (T/T-1) TAUX DE CROISSANCE SUR UN MOIS (IRLANDE 3 MOIS)													
83J/83J	-0.2	0.4	0.4	0.2	-8.5	0.1	-0.2	-0.2		-3.5	0.0	0.2	0.7	-0.3
83A/83J	-0.1	0.0	0.4	0.0	1.9	0.0	0.6	1.1	0.1	1.2	-8.6	0.2	1.7	1.2
83S/83A	1.7	0.4	1.0	2.0	6.4	0.3	0.4	0.1		4.8	9.7	1.2	1.6	1.6
83O/83S	1.9	0.2	1.5	2.6	5.8	0.5	1.0	0.3		0.6	8.9	2.1	2.5	0.1
83N/83O	1.0	0.3	1.4	1.7	-0.3	0.5	0.7	0.7	2.0	0.6	1.1	1.6	2.0	0.0
83D/83N	0.3	0.1	0.6	0.6	-1.9	0.6	0.6	-0.4		-0.6	1.5	0.8	2.5	-0.7
84J/83D	-0.5	0.2	0.4	0.3	-7.1	1.0	0.0	-3.0		-4.0	1.1	0.3	1.8	-1.5
84F/84J	:	0.2	0.6	0.6	2.5	0.7	0.4	:	0.7	5.4	-7.3	0.5	1.7	-0.1
84M/84F	:	0.3	1.2	0.8	3.2	0.6	0.3	:		0.6	8.1	1.1	2.2	1.3
84A/84M	:	0.2	1.1	1.1	2.1	0.4	0.2	:		1.1	1.6	1.2	1.9	0.2
84M/84A	:	0.3	0.7	0.5	-0.1	0.3	1.6	:	4.7	0.0	0.5	0.7	1.1	-0.2
84J/84M	:	0.0	0.4	0.3	-1.0	0.3	0.2	:		0.0	8.4	0.4	1.3	-0.8
84J/84J	:	0.0	0.3	0.2	-7.9	0.3	0.2	:		-4.4	-1.3	0.4	0.5	-0.4
84A/84J	:	0.1	0.3	:	0.4	0.1	0.2	:	1.4	3.5	-7.5	:	0.8	1.8
84S/84A	:	:	:	:	:	:	:	:		:	:	:	:	:
	RATE OF INCREASE OVER 12 MONTHS (T/T-12) TAUX DE CROISSANCE SUR 12 MOIS													
83/82J	8.4	3.3	10.0	13.8	0.9	7.1	6.2	2.0		3.1	25.0	12.1	19.1	2.8
83/82A	8.2	3.1	10.1	13.6	0.6	6.9	6.7	2.7	3.6	3.8	19.7	11.8	20.5	2.9
83/82S	8.0	2.9	10.5	13.0	-0.9	6.7	6.6	1.7		6.1	24.3	11.3	19.2	2.8
83/82O	8.0	2.8	11.0	11.9	1.0	6.9	6.4	2.1		6.1	22.7	11.6	18.3	2.7
83/82N	8.1	2.7	11.3	12.2	0.5	6.3	5.5	2.5	3.2	6.7	22.9	11.5	18.1	2.7
83/82D	8.0	2.7	11.2	12.2	-0.2	5.7	5.3	1.9		6.7	23.7	11.5	18.9	2.9
84/83J	7.9	2.7	11.2	12.0	0.0	6.1	5.2	-0.1		5.0	28.5	11.5	19.9	2.8
84/83F	:	2.6	11.0	12.1	0.0	6.2	5.5	:	4.4	5.4	25.9	11.6	20.0	2.2
84/83M	:	2.8	11.0	11.5	0.7	6.1	5.6	:		5.3	23.5	11.8	21.1	2.2
84/83A	:	2.9	10.7	11.6	1.4	5.8	5.2	:		6.5	24.4	11.4	22.1	1.9
84/83M	:	2.8	10.3	11.6	1.5	5.5	6.2	:	7.6	6.5	23.8	11.2	21.1	1.4
84/83J	:	2.7	10.1	11.3	1.8	5.5	6.0	:		5.9	25.8	10.8	23.1	0.9
84/83J	:	2.3	10.0	11.3	2.4	5.6	6.3	:		4.9	24.1	11.0	22.8	0.8
84/83A	:	2.5	9.9	:	0.9	5.7	5.9	:	9.0	7.2	25.6	:	21.7	1.4
84/83S	:	:	:	:	:	:	:	:		:	:	:	:	:

## CONSUMER PRICES

E

## PRIX A LA CONSOMMATION

## RENT, HEATING AND LIGHTING (1)

## LOYERS, CHAUFFAGE ET ECLAIRAGE (1)

	EUR10	BR DEUTSCH LAND	FRANCE	ITALIA	NEDER- LAND	BELGIQUE BELGIE	LUXEM- BOURG	UNITED KINGDOM	IRELAND	DANMARK	ELLAS	ESPANA	PORTU- GAL	USA
	PRICE INDICES				1975 = 100				INDICES DE PRIX					
1979 Ø	150.4	120.2	152.2	175.9	136.5	137.0	129.2	167.8	152.8	155.0	165.0	192.2	:	136.5
1980 Ø	182.4	128.0	183.7	235.4	151.1	152.6	142.0	214.3	206.0	182.3	212.9	233.8	:	157.9
1981 Ø	212.5	137.6	215.5	284.0	170.5	168.4	156.8	255.6	254.4	209.7	270.7	275.9	:	176.0
1982 Ø	239.9	145.8	244.5	338.1	186.9	183.9	173.3	288.9	289.6	233.3	320.5	313.0	:	188.5
1983 Ø	260.8	150.4	270.0	401.6	197.6	199.1	192.8	300.5	308.4	246.6	365.9	343.9	:	193.7
1983 J	261.0	150.3	271.6	395.8	201.4	196.5	194.7	303.0		245.0	368.2	341.7	:	194.5
1983 A	262.2	151.8	271.9	396.5	201.4	198.6	194.7	305.2	313.9	246.0	369.9	345.2	:	194.7
1983 S	263.8	152.4	273.3	402.2	201.2	199.3	196.3	306.0		248.0	370.7	349.5	:	195.7
1983 O	269.7	152.2	277.3	434.8	201.2	198.8	197.2	307.7		248.0	371.2	353.5	:	195.9
1983 N	271.3	153.1	277.9	438.8	201.2	206.0	197.5	308.6	319.7	253.0	371.7	354.7	:	196.0
1983 D	272.0	154.5	278.2	439.5	201.2	206.5	198.3	309.3		254.0	372.2	359.6	:	196.3
1984 J	275.6	154.2	280.8	457.0	204.1	210.1	201.3	309.9		254.0	385.7	363.0	:	197.4
1984 F	:	154.7	284.7	460.3	204.1	212.6	203.7		325.4	254.0	398.9	366.2	:	198.4
1984 M	:	154.3	287.5	462.9	204.3	211.0	198.7			252.0	413.1	369.0	:	198.7
1984 A	:	154.8	289.1	469.0	204.4	211.7	199.7			252.0	415.4	371.3	:	199.8
1984 M	:	154.9	289.2	467.8	204.4	212.5	200.2		327.7	258.0	416.9	375.5	:	200.6
1984 J	:	155.4	289.7	467.4	204.4	213.2	195.2			259.0	418.4	376.7	:	201.6
1984 J	:	155.6	292.0	468.8	208.9	212.0	196.5			258.0	426.8	377.1	:	202.7
1984 A	:	156.0	293.2	:	208.9	212.7	196.8		329.8	258.0	432.0	:	:	203.5
1984 S	:	:	:	:	:	:	:			:	:	:	:	:
	RATE OF INCREASE OVER ONE MONTH (IRELAND 3 MONTHS) (T/T-1) TAUX DE CROISSANCE SUR UN MOIS (IRLANDE 3 MOIS)													
83J/83J	1.2	0.5	0.8	1.5	3.8	0.8	3.3	1.7		-0.4	0.2	0.2	:	0.4
83A/83J	0.5	1.0	0.1	0.2	0.0	1.1	0.0	0.7	3.3	0.4	0.5	1.0	:	0.1
83S/83A	0.6	0.4	0.5	1.4	-0.1	0.4	0.8	0.3		0.8	0.2	1.2	:	0.5
83O/83S	2.2	-0.1	1.5	8.1	0.0	-0.3	0.5	0.6		0.0	0.1	1.1	:	0.1
83N/83O	0.6	0.6	0.2	0.9	0.0	3.6	0.2	0.3	1.8	2.0	0.1	0.4	:	0.1
83D/83N	0.3	0.9	0.1	0.2	0.0	0.2	0.4	0.2		0.4	0.1	1.4	:	0.1
84J/83D	1.3	-0.2	0.9	4.0	1.4	1.7	1.5	0.2		0.0	3.6	0.9	:	0.5
84F/84J	:	0.3	1.4	0.7	0.0	1.2	1.2	:	1.8	0.0	3.4	0.9	:	0.5
84M/84F	:	-0.3	1.0	0.6	0.1	-0.8	-2.5	:		-0.8	3.5	0.8	:	0.2
84A/84M	:	0.3	0.6	1.3	0.0	0.3	0.5	:		0.0	0.6	0.6	:	0.5
84M/84A	:	0.1	0.0	-0.3	0.0	0.4	0.3	:	0.7	2.4	0.4	1.1	:	0.4
84J/84M	:	0.3	0.2	-0.1	0.0	0.3	-2.5	:		0.4	0.3	0.3	:	0.5
84J/84J	:	0.1	0.8	0.3	2.2	-0.6	0.7	:		-0.4	2.0	0.1	:	0.6
84A/84J	:	0.3	0.4	:	0.0	0.3	0.2	:	0.6	0.0	1.2	:	:	0.4
84S/84A	:	:	:	:	:	:	:	:		:	:	:	:	:
	RATE OF INCREASE OVER 12 MONTHS (T/T-12) TAUX DE CROISSANCE SUR 12 MOIS													
83/82J	8.0	3.2	10.2	18.1	5.4	7.2	11.0	2.6		4.7	13.8	8.4	:	2.2
83/82A	7.6	3.9	9.7	15.8	5.4	7.8	10.6	2.8	6.6	5.1	14.1	9.2	:	1.5
83/82S	8.2	3.5	9.8	15.7	5.2	6.7	11.0	4.8		5.1	14.1	10.0	:	2.1
83/82O	8.9	2.1	10.7	19.7	5.0	4.6	9.9	4.9		3.3	13.3	10.6	:	1.9
83/82N	8.5	2.4	9.7	18.4	5.1	8.5	8.3	4.4	8.1	2.4	13.0	10.6	:	2.5
83/82D	9.1	3.6	8.5	18.1	5.2	9.8	8.9	6.7		3.7	12.7	9.3	:	3.5
84/83J	9.3	3.6	7.9	19.6	5.2	8.7	5.7	6.8		3.7	10.2	9.4	:	3.6
84/83F	:	4.4	9.0	20.2	5.2	10.1	7.6	:	9.9	4.1	12.9	9.8	:	3.9
84/83M	:	4.6	10.0	21.4	5.4	9.2	4.9	:		4.1	13.6	9.3	:	4.0
84/83A	:	4.3	7.8	21.5	5.3	10.0	6.0	:		4.6	13.6	9.6	:	4.0
84/83M	:	4.0	7.5	20.1	5.3	9.9	6.3	:	7.8	4.5	13.8	10.4	:	4.0
84/83J	:	3.9	7.5	19.9	5.3	9.3	3.6	:		5.3	13.9	10.5	:	4.1
84/83J	:	3.5	7.5	18.4	3.7	7.9	0.9	:		5.3	15.9	10.4	:	4.2
84/83A	:	2.8	7.8	:	3.7	7.1	1.1	:	5.1	4.9	16.8	:	:	4.5
84/83S	:	:	:	:	:	:	:	:		:	:	:	:	:

∞



CONSUMER PRICES  
HOUSEHOLD GOODS AND SERVICES

RIX A LA CONSOMMATION  
BIENS ET SERVICES DE MENAGE

	EUR10	BR DEUTSCH LAND	FRANCE	ITALIA	NEDER- LAND	BELGIQUE BELGIE	LUXEM- BOURG	UNITED KINGDOM	IRELAND	DANMARK	ELLAS	ESPANA	PORTU- GAL	USA	
	PRICE INDICES							1975 = 100	INDICES DE PRIX						
1979 Ø	136.1	113.7	135.2	170.7	117.6	121.7	118.1	164.2	157.8	139.7	148.8	216.0	171.8	120.4	
1980 Ø	152.4	120.5	152.3	206.0	124.5	126.4	125.8	188.1	185.9	154.9	185.9	251.1	212.1	129.9	
1981 Ø	167.9	127.9	170.4	245.3	131.0	131.8	134.2	199.6	220.3	172.6	228.0	281.4	249.4	140.0	
1982 Ø	182.8	134.1	190.4	283.0	136.3	137.8	145.0	208.3	246.8	190.0	275.8	321.0	296.0	147.4	
1983 Ø	196.2	137.9	207.6	319.8	136.9	149.8	157.8	217.2	269.1	201.2	328.7	361.1	363.8	150.9	
1983 J	197.2	138.1	208.9	320.8	137.0	150.3	158.4	217.1		201.0	360.1	364.0	356.1	151.1	
1983 A	197.7	138.5	210.1	322.9	137.6	150.5	159.4	217.3	272.9	202.0	342.6	364.8	361.8	150.5	
1983 S	199.0	138.8	211.5	324.6	137.8	150.8	160.2	218.7		203.0	369.2	368.5	368.9	151.1	
1983 O	199.9	139.1	212.8	326.0	137.8	151.4	160.9	219.4		205.0	376.4	372.8	380.5	151.4	
1983 N	201.5	139.3	214.0	333.7	137.9	152.5	162.4	219.6	277.1	206.0	383.3	376.3	403.4	151.7	
1983 D	202.1	139.4	214.8	334.7	138.2	153.2	162.8	220.9		206.0	385.5	378.5	401.1	152.1	
1984 J	202.8	139.7	215.7	336.0	138.7	154.5	163.2	220.4		207.0	392.9	381.9	409.9	152.1	
1984 F	:	140.0	216.8	341.4	139.2	155.6	166.2	:	281.4	209.0	373.6	385.6	418.3	152.1	
1984 M	:	140.4	218.4	342.8	139.4	156.4	164.9	:		212.0	403.9	388.9	428.4	152.6	
1984 A	:	140.6	220.0	344.1	139.7	156.9	165.5	:		213.0	409.0	394.3	438.1	153.3	
1984 M	:	140.8	221.1	348.0	139.9	157.3	165.9	:	284.3	213.0	416.7	397.2	446.0	153.3	
1984 J	:	140.9	222.0	349.0	139.9	158.1	166.1	:		215.0	419.2	399.8	455.0	153.3	
1984 A	:	141.0	223.0	349.9	139.3	158.6	166.0	:		215.0	422.6	403.6	466.2	153.0	
1984 S	:	141.1	223.9	:	139.6	159.0	166.9	:	288.4	216.0	406.0	:	473.1	153.2	
1984 S	:	:	:	:	:	:	:	:		:	:	:	:	:	
	RATE OF INCREASE OVER ONE MONTH (IRELAND 3 MONTHS) (T/T-1)							TAUX DE CROISSANCE SUR UN MOIS (IRLANDE 3 MOIS)							
83J/83J	0.4	0.4	0.7	0.5	-0.3	0.2	-0.3	-0.1		0.0	1.1	0.7	1.7	0.1	
83A/83J	0.3	0.3	0.6	0.7	0.4	0.1	0.6	0.1	1.7	0.5	-4.8	0.2	1.6	-0.4	
83S/83A	0.7	0.2	0.7	0.5	0.1	0.2	0.5	0.6		0.5	7.7	1.0	2.0	0.4	
83O/83S	0.5	0.2	0.6	0.4	0.0	0.4	0.4	0.3		1.0	2.0	1.2	3.1	0.2	
83N/83O	0.8	0.1	0.6	2.4	0.1	0.7	0.9	0.1	1.5	0.5	1.8	0.9	6.0	0.2	
83D/83N	0.3	0.1	0.4	0.3	0.2	0.5	0.2	0.6		0.0	0.6	0.6	-0.6	0.3	
84J/83D	0.3	0.2	0.4	0.4	0.4	0.8	0.2	-0.2		0.5	1.9	0.9	2.2	-0.0	
84F/84J	:	0.2	0.5	1.6	0.4	0.7	1.8	:	1.6	1.0	-4.9	1.0	2.0	0.0	
84M/84F	:	0.3	0.7	0.4	0.1	0.5	-0.8	:		1.4	8.1	0.9	2.4	0.3	
84A/84M	:	0.1	0.7	0.4	0.2	0.3	0.4	:		0.5	1.3	1.4	2.3	0.5	
84M/84A	:	0.1	0.5	1.1	0.1	0.3	0.2	:	1.0	0.0	1.9	0.7	1.8	0.0	
84J/84M	:	0.1	0.4	0.3	0.0	0.5	0.1	:		0.9	0.6	0.7	2.0	-0.0	
84J/84J	:	0.1	0.5	0.3	-0.4	0.3	-0.1	:		0.0	0.8	1.0	2.5	-0.2	
84A/84J	:	0.1	0.4	:	0.2	0.3	0.5	:	1.4	0.5	-3.9	:	1.5	0.1	
84S/84A	:	:	:	:	:	:	:	:		:	:	:	:	:	
	RATE OF INCREASE OVER 12 MONTHS							TAUX DE CROISSANCE SUR 12 MOIS							
83/82J	7.4	2.7	8.4	13.2	0.3	9.4	7.6	4.5		5.2	28.2	12.4	20.2	2.1	
83/82A	7.3	2.8	8.8	12.7	0.6	9.0	7.9	3.8	8.9	5.2	25.9	12.4	19.5	2.0	
83/82S	7.3	2.7	9.2	12.3	0.7	8.7	8.0	3.9		4.6	27.9	12.3	20.0	2.0	
83/82O	7.4	2.7	9.7	11.6	0.7	8.9	8.1	4.0		5.1	28.5	12.5	22.5	1.7	
83/82N	7.2	2.7	9.8	10.9	0.6	8.8	8.7	3.4	9.0	5.6	29.3	12.4	28.4	2.0	
83/82D	7.1	2.7	9.6	10.6	0.7	8.2	8.4	3.6		5.1	28.5	12.5	25.9	2.0	
84/83J	6.9	2.6	8.9	10.7	1.2	6.5	7.9	3.3		5.6	31.4	12.5	26.7	2.0	
84/83F	:	2.6	8.3	10.3	1.6	5.9	8.1	:	9.0	6.1	22.2	11.9	26.6	1.6	
84/83M	:	2.6	7.9	10.0	1.6	5.7	6.5	:		7.1	20.7	11.2	27.3	1.5	
84/83A	:	2.6	7.6	9.8	1.7	5.4	6.8	:		7.0	18.6	11.1	28.4	1.4	
84/83M	:	2.5	7.3	9.5	1.8	5.3	6.6	:	5.9	6.5	18.9	11.0	29.1	1.7	
84/83J	:	2.4	7.0	9.3	1.8	5.4	4.6	:		7.0	17.7	10.6	30.0	1.6	
84/83J	:	2.1	6.7	9.1	1.7	5.5	4.8	:		7.0	17.4	10.9	30.9	1.3	
84/83A	:	1.9	6.6	:	1.5	5.6	4.7	:	5.7	6.9	18.5	:	30.8	1.8	
84/83S	:	:	:	:	:	:	:	:		:	:	:	:	:	

6

## CONSUMER PRICES

G

## PRIX A LA CONSOMMATION

## TRANSPORT AND COMMUNICATIONS

## TRANSPORTS ET COMMUNICATIONS

	EUR10	BR DEUTSCH LAND	FRANCE	ITALIA	NEDER- LAND	BELGIQUE BELGIE	LUXEM- BOURG	UNITED KINGDOM	IRELAND	DANMARK	ELLAS	ESPANA	PORTU- GAL	USA
	PRICE INDICES				1975 = 100				INDICES DE PRIX					
1979 Ø	148.5	114.7	151.6	192.3	122.2	129.8	125.9	165.6	171.0	141.0	158.7	204.2	263.3	140.8
1980 Ø	172.3	122.0	174.8	239.3	132.2	143.9	137.7	197.9	209.6	162.3	194.6	253.4	334.3	165.8
1981 Ø	194.4	130.6	198.2	283.0	143.7	156.6	149.9	222.8	260.2	183.0	221.1	295.9	419.6	185.9
1982 Ø	214.5	136.5	222.2	330.2	149.9	173.3	167.2	238.4	313.8	203.1	254.9	333.5	526.1	193.6
1983 Ø	234.5	140.5	241.6	386.6	155.5	189.1	180.8	252.4	356.8	216.0	313.3	380.4	701.1	198.1
1983 J	236.3	141.1	244.7	386.8	158.6	191.4	185.5	254.9		219.0	315.4	382.7	689.8	199.5
1983 A	237.5	142.3	246.6	388.3	159.3	192.9	186.3	255.8	359.6	219.0	315.2	384.6	704.5	200.8
1983 S	240.2	142.9	247.6	401.0	159.0	192.8	188.3	256.5		221.0	315.9	384.7	770.3	201.7
1983 O	240.3	142.5	247.9	402.5	157.0	190.8	189.1	256.5		220.0	319.3	385.9	777.1	202.5
1983 N	240.6	142.1	247.8	403.7	157.8	193.4	186.8	256.7	365.8	222.0	319.9	387.4	777.1	203.4
1983 D	240.7	142.6	247.8	404.4	157.7	192.5	190.8	256.2		219.0	326.1	397.8	777.1	203.4
1984 J	242.9	143.5	250.0	413.8	158.2	189.2	191.9	255.8		221.0	327.8	405.3	782.3	203.2
1984 F	:	143.6	251.8	417.4	158.6	190.0	191.8	:	378.0	224.0	336.8	410.6	808.5	203.1
1984 M	:	143.3	252.6	419.5	158.6	190.4	191.2	:		224.0	341.2	411.8	808.5	203.8
1984 A	:	143.3	265.3	419.8	159.8	191.8	191.6	:		226.0	347.9	413.2	809.7	205.6
1984 M	:	143.5	256.1	423.4	160.3	192.5	191.9	:	380.1	226.0	348.7	416.9	809.7	207.3
1984 J	:	144.1	257.0	425.8	160.6	190.6	192.1	:		228.0	348.7	419.0	906.3	207.9
1984 J	:	143.7	261.4	341.2	161.0	193.0	192.1	:		228.0	348.9	419.2	906.8	207.8
1984 A	:	142.9	265.3	:	161.4	194.2	192.3	:	384.5	228.0	349.4	:	906.8	207.8
1984 S	:	:	:	:	:	:	:	:		:	:	:	:	:
	RATE OF INCREASE OVER ONE MONTH (IRELAND 3 MONTHS) (T/T-1)				TAUX DE CROISSANCE SUR UN MOIS (IRLANDE 3 MOIS)									
83J/83J	0.8	0.9	1.3	0.2	2.0	0.6	6.1	1.0		0.9	0.4	0.6	4.6	0.7
83A/83J	0.5	0.9	0.8	0.4	0.4	0.8	0.4	0.4	0.2	0.0	-0.1	0.5	2.1	0.7
83S/83A	1.1	0.4	0.4	3.3	-0.2	-0.1	1.1	0.3		0.9	0.2	0.0	9.3	0.4
83O/83S	0.0	-0.3	0.1	0.4	-1.3	-1.0	0.4	0.0		-0.5	1.1	0.3	0.9	0.4
83N/83O	0.1	-0.3	-0.0	0.3	0.5	1.4	-1.2	0.1	1.7	0.9	0.2	0.4	0.0	0.4
83D/83N	0.1	0.4	0.0	0.2	-0.1	-0.5	2.1	-0.2		-1.4	1.9	2.7	0.0	0.0
84J/83D	0.9	0.6	0.9	2.3	0.3	-1.7	0.6	-0.2		0.9	0.5	1.9	0.7	-0.1
84F/84J	:	0.1	0.7	0.9	0.3	0.4	-0.1	:	3.3	1.4	2.8	1.3	3.3	-0.1
84M/84F	:	-0.2	0.3	0.5	0.0	0.2	-0.3	:		0.0	1.3	0.3	0.0	0.4
84A/84M	:	0.0	5.0	0.1	0.8	0.7	0.2	:		0.9	2.0	0.3	0.1	0.9
84M/84A	:	0.1	-3.5	0.9	0.3	0.4	0.2	:	0.6	0.0	0.2	0.9	0.0	0.8
84J/84M	:	0.4	0.4	0.6	0.2	-1.0	0.1	:		0.9	0.0	0.5	11.9	0.3
84J/84J	:	-0.3	1.7	-19.9	0.2	1.3	0.0	:		0.0	0.0	0.1	0.1	-0.1
84A/84J	:	-0.6	1.5	:	0.2	0.6	0.1	:	1.2	0.0	0.1	:	0.0	0.0
84S/84A	:	:	:	:	:	:	:	:		:	:	:	:	:
	RATE OF INCREASE OVER 12 MONTHS				TAUX DE CROISSANCE SUR 12 MOIS									
83/82J	9.9	2.0	10.2	19.4	4.1	7.8	9.9	5.7		6.3	23.0	15.7	30.0	1.5
83/82A	8.5	2.6	10.3	12.6	4.9	8.9	9.3	5.7	12.6	5.8	22.1	14.7	32.8	2.1
83/82S	9.4	2.7	10.0	15.7	4.7	7.8	9.9	6.4		5.2	22.2	14.7	44.9	2.8
83/82O	8.2	1.9	9.3	13.8	2.6	5.5	9.8	5.6		2.8	23.5	11.3	42.6	3.2
83/82N	7.6	1.7	7.1	13.2	3.6	6.9	7.6	5.2	12.1	4.7	23.6	14.2	42.6	3.5
83/82D	7.4	2.1	6.5	13.1	4.4	7.1	10.5	4.5		5.3	23.5	10.4	42.6	3.9
84/83J	7.9	3.2	7.3	14.3	4.6	4.1	12.0	4.5		5.7	16.8	10.9	21.8	4.4
84/83F	:	3.5	8.1	13.4	5.0	3.9	11.4	:	10.3	6.7	8.5	10.4	25.9	5.5
84/83M	:	4.3	8.2	12.6	5.1	3.5	10.9	:		6.7	9.0	10.4	24.3	6.8
84/83A	:	4.5	12.2	10.6	4.4	3.1	8.1	:		7.1	11.1	10.3	22.7	5.9
84/83M	:	2.9	6.9	10.1	3.7	1.2	9.9	:	5.9	5.1	10.1	10.8	22.7	5.4
84/83J	:	3.1	6.4	10.3	3.3	0.2	9.8	:		5.1	11.0	10.1	37.4	5.0
84/83J	:	1.8	6.8	-11.8	1.5	0.8	3.6	:		4.1	10.6	9.5	31.5	4.2
84/83A	:	0.4	7.6	:	1.3	0.7	3.2	:	6.9	4.1	10.8	:	28.7	3.5
84/83S	:	:	:	:	:	:	:	:		:	:	:	:	:

10

## CONSUMER PRICES

H

## PRIX A LA CONSOMMATION

## RECREATION AND EDUCATION, ETC

## LOISIRS, SPECTACLES ENSEIGNEMENTS ETC

	EUR10	BR DEUTSCH LAND	FRANCE	ITALIA	NEDER- LAND	BELGIQUE BELGIE	LUXEM- BOURG	UNITED KINGDOM	IRELAND	DANMARK	ELLAS	ESPANA	PORTU- GAL	USA	
	PRICE INDICES				1975 = 100				INDICES DE PRIX						
1979 Ø	136.1	110.1	133.7	159.8	113.7	117.4	124.9	155.1	168.7	138.5	176.1	206.6	173.4	:	
1980 Ø	151.0	113.0	146.6	189.6	117.6	120.7	133.5	179.1	195.4	150.0	201.7	231.1	203.2	:	
1981 Ø	167.3	117.8	161.8	228.2	122.5	125.9	143.6	196.0	231.8	165.2	265.2	264.0	233.2	:	
1982 Ø	183.2	123.3	180.1	260.9	128.1	133.8	157.7	211.8	277.0	183.6	317.5	302.5	278.8	:	
1983 Ø	196.8	126.7	187.2	306.2	131.9	143.3	171.2	221.0	313.8	198.0	393.3	338.6	342.6	:	
1983 J	198.2	125.8	194.5	307.3	132.5	143.7	171.7	221.7		198.0	396.8	336.8	336.7	:	
1983 A	198.8	125.4	195.2	310.4	132.2	143.1	173.2	222.4	315.3	199.0	397.1	338.8	339.1	:	
1983 S	199.9	125.9	196.5	311.2	131.7	144.2	174.4	222.6		200.0	420.2	345.1	342.7	:	
1983 O	201.3	126.5	197.9	314.4	132.3	146.9	175.6	223.0		202.0	426.2	351.3	364.2	:	
1983 N	202.8	127.4	198.8	319.5	132.4	147.4	176.4	224.3	329.7	203.0	429.4	353.1	373.3	:	
1983 D	203.3	127.9	199.4	320.7	132.3	147.4	177.4	224.6		203.0	430.0	355.0	383.2	:	
1984 J	204.6	129.5	201.1	323.4	133.1	150.7	178.6	224.3		205.0	433.2	358.9	393.8	:	
1984 F	:	129.3	202.3	330.5	133.3	151.5	179.7	:	332.0	205.0	433.5	359.7	401.0	:	
1984 M	:	129.6	203.2	332.7	133.5	151.9	180.0	:		205.0	442.1	361.1	405.2	:	
1984 A	:	129.1	204.5	336.6	133.7	153.1	180.8	:		207.0	447.2	363.5	435.0	:	
1984 M	:	129.1	205.5	337.8	133.9	152.9	181.3	:	339.3	208.0	454.2	366.2	438.9	:	
1984 J	:	129.6	206.3	339.4	134.7	154.6	181.0	:		210.0	463.1	367.8	441.9	:	
1984 J	:	129.0	207.0	438.1	135.1	155.1	181.6	:		210.0	465.0	371.6	442.8	:	
1984 A	:	128.9	207.4	:	135.2	154.9	182.5	:	341.3	210.0	463.9	:	445.2	:	
1984 S	:	:	:	:	:	:	:	:		:	:	:	:	:	
	RATE OF INCREASE OVER ONE MONTH (IRELAND 3 MONTHS) (T/T-1)				TAUX DE CROISSANCE SUR UN MOIS (IRLANDE 3 MOIS)										
83J/83J	0.2	-0.9	0.5	0.7	0.1	0.3	1.2	0.2		0.0	1.4	0.1	2.3	:	
83A/83J	0.3	-0.3	0.4	1.0	-0.2	-0.4	0.9	0.3	1.6	0.5	0.1	0.6	0.7	:	
83S/83A	0.5	0.4	0.7	0.3	-0.4	0.8	0.7	0.1		0.5	5.8	1.9	1.1	:	
83O/83S	0.7	0.5	0.7	1.0	0.5	1.9	0.7	0.2		1.0	1.4	1.8	6.3	:	
83N/83O	0.8	0.7	0.5	1.6	0.1	0.3	0.5	0.6	4.6	0.5	0.7	0.5	2.5	:	
83D/83N	0.2	0.4	0.3	0.4	-0.1	0.0	0.6	-0.1		0.0	0.1	0.5	2.7	:	
84J/83D	0.6	1.3	0.9	0.8	0.6	2.2	0.7	-0.1		1.0	0.7	1.1	2.8	:	
84F/84J	:	-0.2	0.6	2.2	0.2	0.5	0.6	:	0.7	0.0	0.1	0.2	1.8	:	
84M/84F	:	0.2	0.4	0.7	0.2	0.3	0.2	:		0.0	2.0	0.4	1.0	:	
84A/84M	:	-0.4	0.6	1.2	0.1	0.8	0.4	:		1.0	1.2	0.7	7.4	:	
84M/84A	:	0.0	0.5	0.4	0.1	-0.1	0.3	:	2.2	0.5	1.6	0.7	0.9	:	
84J/84M	:	0.4	0.4	0.5	0.6	1.1	-0.2	:		1.0	2.0	0.4	0.7	:	
84J/84J	:	-0.5	0.3	29.1	0.3	0.3	0.3	:		0.0	0.4	1.0	0.2	:	
84A/84J	:	-0.1	0.2	:	0.1	-0.1	0.5	:	0.6	0.0	-0.2	:	0.5	:	
84S/84A	:	:	:	:	:	:	:	:		:	:	:	:	:	
	RATE OF INCREASE OVER 12 MONTHS (T/T-12)				TAUX DE CROISSANCE SUR 12 MOIS										
83/82J	8.3	3.1	7.8	18.3	3.2	7.1	8.3	4.3		7.6	25.7	11.8	19.4	:	
83/82A	8.3	3.3	8.1	17.4	2.7	6.2	8.9	4.7	12.1	7.0	24.4	11.7	19.5	:	
83/82S	7.8	2.5	8.3	16.8	2.0	6.4	8.2	4.0		6.4	23.3	11.6	20.7	:	
83/82O	7.9	2.7	8.6	16.8	2.1	8.3	7.9	3.7		6.3	23.9	10.5	22.8	:	
83/82N	7.9	2.9	8.3	16.8	2.4	7.9	7.7	3.7	11.7	6.3	23.7	10.2	24.7	:	
83/82D	7.7	2.4	7.8	16.8	2.6	7.9	8.1	3.7		6.3	23.5	10.1	26.1	:	
84/83J	6.7	2.2	7.5	12.5	1.5	8.1	7.9	3.4		6.8	23.9	10.5	27.6	:	
84/83F	:	1.7	7.3	12.7	1.4	8.0	8.0	:	10.7	6.2	21.4	9.9	26.9	:	
84/83M	:	2.0	6.9	11.1	1.5	7.9	7.8	:		6.2	20.5	10.1	27.5	:	
84/83A	:	1.7	7.0	11.6	1.6	8.0	7.7	:		5.1	20.2	9.7	35.6	:	
84/83M	:	2.1	6.6	11.2	1.5	7.8	6.9	:	9.3	5.1	18.9	9.2	35.7	:	
84/83J	:	2.0	6.6	11.2	1.7	8.0	6.7	:		6.1	18.3	9.4	34.2	:	
84/83J	:	2.5	6.4	42.6	2.0	7.9	5.8	:		6.1	17.2	10.3	31.5	:	
84/83A	:	2.8	6.2	:	2.3	8.2	5.4	:	8.2	5.5	16.8	:	31.3	:	
84/83S	:	:	:	:	:	:	:	:		:	:	:	:	:	

11

CONSUMER PRICES  
OTHER GOODS AND SERVICES

PRIX A LA CONSOMMATION  
AUTRES BIENS ET SERVICES

	EUR10	BR DEUTSCH LAND	FRANCE	ITALIA	NEDER- LAND	BELGIQUE BELGIE	LUXEM- BOURG	UNITED KINGDOM	IRELAND	DANMARK	ELLAS	ESPANA	PORTU- GAL	USA	
	PRICE INDICES							1975 = 100	INDICES DE PRIX						
1979 Ø	155.1	117.5	148.6	182.7	134.5	132.9	135.9	174.2	172.7	150.8	199.9	239.1	189.2	142.5	
1980 Ø	185.4	124.8	176.8	237.3	145.6	137.8	141.8	211.4	210.7	168.4	275.3	292.6	214.1	165.9	
1981 Ø	212.1	132.2	203.6	288.2	154.4	145.2	153.0	238.1	262.4	184.4	343.4	336.3	255.3	188.7	
1982 Ø	237.3	138.1	226.1	337.9	162.3	151.5	162.4	260.9	318.2	202.9	454.6	391.6	308.1	206.0	
1983 Ø	263.6	143.4	252.0	393.8	167.2	163.6	177.3	279.3	365.2	220.5	585.1	459.1	378.1	210.8	
1983 J	264.9	144.5	253.9	394.1	167.7	164.9	179.4	280.3		222.0	594.5	462.1	379.4	210.5	
1983 A	266.9	145.0	255.9	400.4	167.9	165.1	181.2	281.5	369.5	222.0	592.2	464.6	391.9	211.3	
1983 S	268.6	145.2	258.1	404.2	168.2	165.5	181.7	282.5		224.0	599.7	471.9	393.3	212.8	
1983 O	270.2	145.4	260.0	406.4	168.3	165.8	182.7	284.2		226.0	609.6	475.3	402.5	213.4	
1983 N	271.8	145.4	260.8	410.7	168.5	166.0	183.0	285.8	376.6	227.0	616.7	482.7	405.9	213.8	
1983 D	273.7	145.7	261.7	411.9	168.7	166.4	183.2	287.2		227.0	669.0	486.8	417.7	214.1	
1984 J	275.0	145.9	262.6	417.2	169.9	166.0	183.4	288.5		228.0	644.2	490.0	421.7	216.0	
1984 F	:	146.2	263.8	425.4	170.2	167.2	183.9	:	383.4	230.0	641.5	494.8	432.5	217.2	
1984 M	:	146.4	264.8	428.0	170.7	168.7	184.2	:		230.0	656.1	505.5	437.3	217.7	
1984 A	:	146.4	266.1	430.4	171.9	170.8	185.3	:		231.0	682.9	509.5	449.2	218.2	
1984 M	:	146.4	268.1	433.3	172.0	171.5	186.3	:	386.4	235.0	670.5	513.6	459.2	219.6	
1984 J	:	147.6	270.2	436.5	172.3	172.9	186.4	:		238.0	675.5	516.0	470.5	221.2	
1984 J	:	148.1	272.3	354.2	172.3	176.3	186.5	:		238.0	683.6	517.9	480.8	222.7	
1984 A	:	148.1	273.6	:	172.5	176.7	186.5	:	402.2	238.0	683.8	:	491.2	224.1	
1984 S	:	:	:	:	:	:	:	:		:	:	:	:	:	
	RATE OF INCREASE OVER ONE MONTH (IRELAND 3 MONTHS) (T/T-1)							TAUX DE CROISSANCE SUR UN MOIS (IRLANDE 3 MOIS)							
83J/83J	0.6	0.8	1.0	0.7	0.1	0.4	0.7	0.2		0.9	0.2	0.8	0.3	0.4	
83A/83J	0.8	0.3	0.8	1.6	0.1	0.1	1.0	0.4	2.5	0.0	-0.4	0.5	3.3	0.4	
83S/83A	0.6	0.1	0.9	0.9	0.2	0.2	0.3	0.4		0.9	1.3	1.6	0.4	0.7	
83O/83S	0.6	0.1	0.7	0.5	0.1	0.2	0.6	0.6		0.9	1.7	0.7	2.3	0.3	
83N/83O	0.6	0.0	0.3	1.1	0.1	0.1	0.2	0.6	1.9	0.4	1.2	1.6	0.8	0.2	
83D/83N	0.7	0.2	0.3	0.3	0.1	0.2	0.1	0.5		0.0	8.5	0.8	2.9	0.1	
84J/83D	0.5	0.1	0.3	1.3	0.7	-0.2	0.1	0.5		0.4	-3.7	0.7	1.0	0.9	
84F/84J	:	0.2	0.5	2.0	0.2	0.7	0.3	:	1.8	0.9	-0.4	1.0	2.6	0.5	
84M/84F	:	0.1	0.4	0.6	0.3	0.9	0.2	:		0.0	2.3	2.2	1.1	0.2	
84A/84M	:	0.0	0.5	0.6	0.7	1.2	0.6	:		0.4	4.1	0.8	2.7	0.2	
84M/84A	:	0.0	0.8	0.7	0.1	0.4	0.5	:	0.8	1.7	-1.8	0.8	2.2	0.7	
84J/84M	:	0.8	0.8	0.7	0.2	0.8	0.1	:		1.3	0.8	0.5	2.5	0.7	
84J/84J	:	0.3	0.8	-18.9	0.0	2.0	0.1	:		0.0	1.2	0.4	2.2	0.7	
84A/84J	:	0.0	0.5	:	0.1	0.2	0.0	:	4.1	0.0	0.0	:	2.2	0.7	
84S/84A	:	:	:	:	:	:	:	:		:	:	:	:	:	
	RATE OF INCREASE OVER 12 MONTHS (T/T-12)							TAUX DE CROISSANCE SUR 12 MOIS							
83/82J	11.2	4.1	11.2	16.7	2.9	9.1	10.8	7.2		9.4	31.0	16.2	21.7	0.9	
83/82A	11.3	4.3	11.8	17.1	2.9	8.7	10.5	7.0	11.9	8.3	29.6	16.3	23.3	0.8	
83/82S	11.0	4.2	12.2	16.4	2.8	8.4	10.1	6.2		7.7	28.5	17.0	23.5	1.2	
83/82O	10.8	4.2	12.6	15.8	2.4	8.3	10.5	6.0		7.1	25.9	17.2	25.5	1.5	
83/82N	10.5	4.1	12.4	14.9	2.4	7.8	9.2	6.2	12.7	7.6	26.1	17.6	24.5	2.3	
83/82D	9.9	3.6	11.3	14.0	2.5	7.3	9.0	6.7		7.6	20.6	16.7	28.0	3.5	
84/83J	9.4	3.6	9.9	12.8	3.2	5.4	8.6	6.5		7.0	24.6	15.1	26.3	3.7	
84/83F	:	3.6	9.0	12.2	3.0	4.2	9.9	:	9.9	7.5	21.2	13.7	26.1	4.0	
84/83M	:	3.6	8.2	11.8	3.0	5.0	9.8	:		7.0	20.4	15.2	25.3	3.9	
84/83A	:	3.5	7.5	11.7	3.1	5.1	5.1	:		6.9	24.1	12.8	24.3	4.5	
84/83M	:	3.3	7.4	11.2	2.8	4.8	4.8	:	7.2	6.8	10.8	12.6	23.6	5.1	
84/83J	:	2.9	7.4	11.6	2.8	5.2	4.7	:		8.2	13.8	12.5	24.4	5.5	
84/83J	:	2.5	7.2	-10.1	2.7	6.9	4.0	:		7.2	15.0	12.1	26.7	5.8	
84/83A	:	2.1	6.9	:	2.7	7.0	2.9	:	8.8	7.2	15.5	:	25.3	6.1	
84/83S	:	:	:	:	:	:	:	:		:	:	:	:	:	

CONSUMER PRICES  
GENERAL INDEX

PRIX A LA CONSOMMATION  
INDICE GENERAL

	SWITZERLAND SUISSE SCHWEIZ	AUSTRIA AUTRICHE OESTERREICH	NORWAY NORVEGE NORGE	SWEDEN SUEDE SVERIGE
	PRICE INDICES	1975 = 100	INDICES DE PRIX	
1979 Ø	107.9	121.6	135.0	144.6
1980 Ø	112.2	129.3	149.7	164.5
1981 Ø	119.5	138.1	170.0	184.4
1982 Ø	126.2	145.6	189.3	200.2
1983 Ø	130.0	150.4	205.3	217.9
1983 J	129.9	150.3	206.5	218.6
1983 A	130.2	151.1	206.1	219.6
1983 S	130.4	151.4	207.8	221.2
1983 O	130.7	152.3	208.8	223.0
1983 N	131.5	152.5	209.3	224.3
1983 D	131.5	153.0	210.4	226.2
1984 J	132.0	156.8	212.3	229.3
1984 F	132.5	157.5	213.4	228.5
1984 M	133.4	158.0	215.8	231.7
1984 A	133.6	158.0	216.7	233.2
1984 M	133.3	157.6	217.0	234.9
1984 J	133.7	159.0	218.1	234.2
1984 J	133.5	158.7	219.0	234.9
1984 A	134.0	160.2	218.8	236.7
1984 S	133.9			238.1
	RATE OF INCREASE OVER ONE MONTH		(T/T-1) TAUX DE CROISSANCE SUR UN MOIS	
83J/83J	-0.2	0.5	0.7	0.8
83A/83J	0.2	0.5	-0.2	0.5
83S/83A	0.2	0.2	0.9	0.7
83O/83S	0.2	0.6	0.5	0.8
83N/83O	0.6	0.1	0.3	0.6
83D/83N	0.0	0.4	0.5	0.8
84J/83D	0.4	2.5	0.9	1.4
84F/84J	0.4	0.5	0.5	-0.4
84M/84F	0.6	0.3	1.1	1.4
84A/84M	0.2	0.0	0.4	0.6
84M/84A	-0.2	-0.3	0.1	0.7
84J/84M	0.3	0.9	0.5	-0.3
84J/84J	-0.2	-0.2	0.4	0.3
84A/84J	0.4	0.9	-0.1	0.8
84S/84A	-0.1			0.6
	RATE OF INCREASE OVER 12 MONTHS		(T/T-12) TAUX DE CROISSANCE SUR 12 MOIS	
83/82J	2.2	2.8	7.9	9.0
83/82A	1.7	3.2	7.6	9.2
83/82S	1.4	3.3	7.8	
83/82O	1.4	3.6	7.5	
83/82N	1.8	3.7	7.0	8.6
83/82D	2.1	3.8	7.1	9.2
84/83J	2.6	5.6	6.4	8.2
84/83F	2.9	5.7	6.5	7.8
84/83M	3.4	5.8	6.6	9.0
84/83A	3.2	5.9	6.6	8.8
84/83M	2.9	5.9	6.6	9.0
84/83J	2.8	6.3	6.4	8.0
84/83J	2.8	5.6	6.1	7.4
84/83A	2.9	6.0	6.2	7.8
84/83S	2.7			7.7

## CONSUMER PRICES

L

## PRIX A LA CONSOMMATION

	EUR10	BR DEUTSCH LAND	FRANCE	ITALIA	NEDER- LAND	BELGIQUE BELGIÉ	LUXEM- BOURG	UNITED KINGDOM	IRELAND	DANMARK	ELLAS	ESPAÑA	PORTU- GAL	USA	CANADA	JAPAN
	PRICE INDICES				1975 = 100				INDICES DE PRIX							
1955	39.2	52.0	33.0	36.3	39.0	45.6	51.3	32.0	29.6	32.4	40.8	21.5	28.9	49.8	48.8	30.7
1956	40.4	53.2	33.6	37.5	40.0	46.8	51.6	33.6	30.9	34.4	42.3	22.7	29.8	50.5	49.5	30.8
1957	41.4	54.3	34.5	37.9	41.6	48.3	53.8	34.8	32.1	34.7	43.3	25.2	30.3	52.2	51.0	31.8
1958	43.3	55.5	39.7	39.0	42.2	48.9	54.3	35.9	33.6	35.0	43.8	28.6	30.7	53.6	52.4	31.7
1959	44.1	56.1	42.1	39.0	42.6	49.6	54.5	36.1	33.6	35.5	44.9	30.7	31.1	54.1	53.0	32.0
1960	44.9	56.9	43.8	39.7	43.6	49.7	54.8	36.4	33.7	36.0	45.5	31.4	32.0	55.0	53.6	32.9
1961	46.0	58.3	44.9	40.1	44.2	50.2	55.0	37.7	34.7	37.2	46.4	31.7	32.5	55.5	54.2	34.7
1962	47.9	60.6	47.2	42.4	45.3	50.7	55.5	39.2	36.1	40.0	46.2	33.5	33.4	56.2	54.8	37.0
1963	49.9	62.4	50.0	45.6	46.8	52.0	57.1	40.0	37.0	42.5	47.6	36.4	34.0	56.9	55.7	40.2
1964	51.7	63.8	51.6	48.3	49.5	54.1	58.9	41.4	39.5	43.8	48.0	39.0	35.2	57.6	56.8	41.7
1965	53.6	65.9	53.0	50.5	51.8	56.3	60.9	43.4	41.5	46.5	49.4	44.2	36.4	58.6	58.1	44.5
1966	55.5	68.2	54.4	51.6	54.8	58.7	62.5	45.1	42.7	50.0	51.9	46.9	38.3	60.3	60.3	46.7
1967	57.0	69.4	55.9	53.6	56.7	60.4	64.3	46.2	44.1	54.0	52.8	49.9	40.4	62.0	62.5	48.6
1968	58.7	70.5	58.4	54.2	58.8	62.0	65.9	48.4	46.1	58.2	53.0	52.4	42.8	64.6	65.0	51.2
1969	61.0	71.8	62.3	55.7	63.1	63.9	67.5	51.0	49.6	60.3	54.3	53.5	46.6	68.1	67.9	53.9
1970	64.0	74.3	65.7	58.4	65.9	66.9	70.6	54.2	53.6	64.3	56.0	56.6	49.6	72.1	70.2	58.0
1971	67.8	78.2	69.2	61.2	70.9	70.1	73.9	59.3	58.4	68.0	57.7	61.3	55.5	75.2	72.2	61.5
1972	72.0	82.5	73.4	64.8	76.6	74.1	77.7	63.6	63.5	72.4	60.2	66.3	61.4	77.7	75.7	64.3
1973	78.0	88.2	78.8	71.8	82.8	78.7	82.5	69.4	70.7	79.1	69.5	73.9	69.4	82.5	81.4	71.9
1974	88.2	94.4	89.5	85.5	91.0	88.7	90.3	80.5	82.7	91.2	88.2	85.5	86.8	91.6	90.3	89.4
1975	100.0	100.0	100.0	100.0	100.0	100.0	100.0	100.0	100.0	100.0	100.0	100.0	100.0	100.0	100.0	100.0
1976	111.0	104.3	109.6	116.7	109.0	109.2	109.8	116.5	118.0	109.0	113.3	117.6	120.1	105.7	107.5	109.3
1977	123.2	108.1	119.9	138.3	116.0	116.9	117.2	135.0	134.1	121.1	127.1	146.5	153.0	112.6	116.1	118.1
1978	132.6	111.1	130.8	155.0	120.9	122.1	120.8	146.2	144.3	133.3	143.0	175.4	186.6	121.2	126.5	122.6
1979	146.4	115.6	144.8	177.9	126.1	127.6	126.3	165.8	163.4	146.1	170.3	202.9	231.8	134.9	138.1	127.0
1980	167.4	122.0	164.5	215.7	134.9	136.1	134.2	195.6	193.2	164.0	212.6	234.5	270.2	153.1	152.1	137.2
1981	188.9	129.2	186.5	257.8	144.1	146.5	145.1	218.9	232.6	183.3	264.7	268.6	324.2	168.9	171.0	144.0
1982	209.7	136.1	208.9	300.2	152.7	159.2	158.6	237.7	272.5	201.9	320.1	310.0	396.7	179.3	189.5	147.8
1983	227.5	140.0	228.5	344.3	157.0	171.4	172.4	248.6	300.2	215.8	385.8	344.7	497.9	185.1	200.5	150.3

## METHODOLOGICAL NOTES

1. The consumer price indices presented here are national indices which may appear under different titles in some of the countries. The development of the general index published by EUROSTAT is equivalent to that published by the country.
2. The components of this general index correspond to groupings of the national indices aggregated according to a harmonized classification of the ESA (European System of Integrated Economic Accounts). The price development of these components is equal to the price development of the national indices for the same components of the classification.
3. The scope of the general index differs according to each country. This can be due to population differences (specific income classes, certain socio-occupational categories, or all households), differences in geographic zones (capital, urban areas, rural areas), or differences in the concepts of expenditure on rent, health, etc.. Finally methods of seasonal correction differ from country to country.
4. A fixed base system is used in some countries, while others use a chain system (variable weights). Base years may also differ between countries. For better comparison EUROSTAT has taken 1975 as the base year for all countries.
5. The EUR 10 indices are obtained from the arithmetic average of the national indices weighted by the relative share of each country in real values, as obtained for final household consumption in real values of the aggregates for 1975 (1975 has been derived from the new 1980 results).

## NOTE METHODOLOGIQUE

1. Les indices de prix à la consommation présentée ici sont les indices nationaux. Ces indices portent des noms différents dans les différents pays. L'indice général publié par l'EUROSTAT correspond toujours, en évolution, à l'indice général publié par le pays.
2. Les composantes de cet indice général correspondent à des regroupements des indices nationaux agrégés selon une classification harmonisée conforme au SEC (Système européen des Comptes nationaux). Les évolutions de prix correspondent pour ces regroupements aux évolutions constatées par les indices nationaux pour le même champ de classification.
3. Le champ couvert par l'indice général est différent selon les pays, aussi bien concernant la population concernée (tranche de revenu spécifique, certaines catégories socio-professionnelles ou l'ensemble des ménages) que en ce qui concerne les zones géographiques concernées (capitale, zones urbaines, ensemble du pays, etc.) ou encore concernant les concepts de dépense pour les loyers, la santé, etc.. Enfin les traitements statistiques concernant les corrections des variations saisonnières sont aussi différents selon les pays.
4. Un système de base fixe est utilisé dans certains pays, dans d'autres un système en chaîne est mis en œuvre (pondérations variables). Les années de référence utilisées au niveau national pour présenter les indices, sont différentes selon les pays. Pour faciliter la comparaison l'EUROSTAT a choisi l'année 1975 comme année commune pour la présentation de ces indices.
5. Les indices EUR 10 sont obtenus comme moyenne arithmétique des indices nationaux pondérés par les parts relatives des différents pays en valeurs réelles, telles qu'elles ont été obtenues pour la consommation finale des ménages et ses composantes, lors de la comparaison en valeurs réelles des agrégats du SEC-1975 (1975 a été dérivé des nouveaux résultats pour 1980).

