



# CONSUMER PRICE INDEX

## LIBRARY

Monthly Bulletin

25 May 1982

### CONSUMER PRICE INDEX : MAY 1982

The consumer price index for the European Community in April was 1.2 % higher than in March. This rate of increase varied from country to country: Greece 3.0 %, United Kingdom 2.0 %, Belgium 1.2 %, France 1.1 %, Italy 0.9 %, Denmark 0.6 %, FR of Germany and the Netherlands 0.5 % and Luxembourg 0.3 %

The increase in the index for the Community compared with April 1981 was 11.2 %, which is the lowest increase since August 1979. However, compared with the USA (6.1 %) and Japan (3.0 %), this rate of increase is still relatively high.

This monthly bulletin includes at page 4 a chart showing for each member country the development of the price indices for the Group "Drinks (home consumption) and tobacco". The index of this group ranges more or less as widely between member countries as the total index; the index for the Community is somewhat below the general index. This can be observed for Greece, Italy, Denmark as well as the Netherlands and the FR of Germany. It is not the case for Ireland, the United Kingdom, France, Belgium and Luxembourg.

The price development for drinks and tobacco is influenced by changes in the rates of excises. From the chart the impact of fiscal changes can be seen at some moments of the year, in particular at the beginning of the fiscal year.

Contents :

- Table A - General index, p. 3
- Table B-K - Indices for sub-groups, P. 4-13
- Table L - General price indices for Switzerland, Austria, Norway and Sweden, p. 14
- Table M - Historical series 1955 - 1981
- Methodological note, P. 16

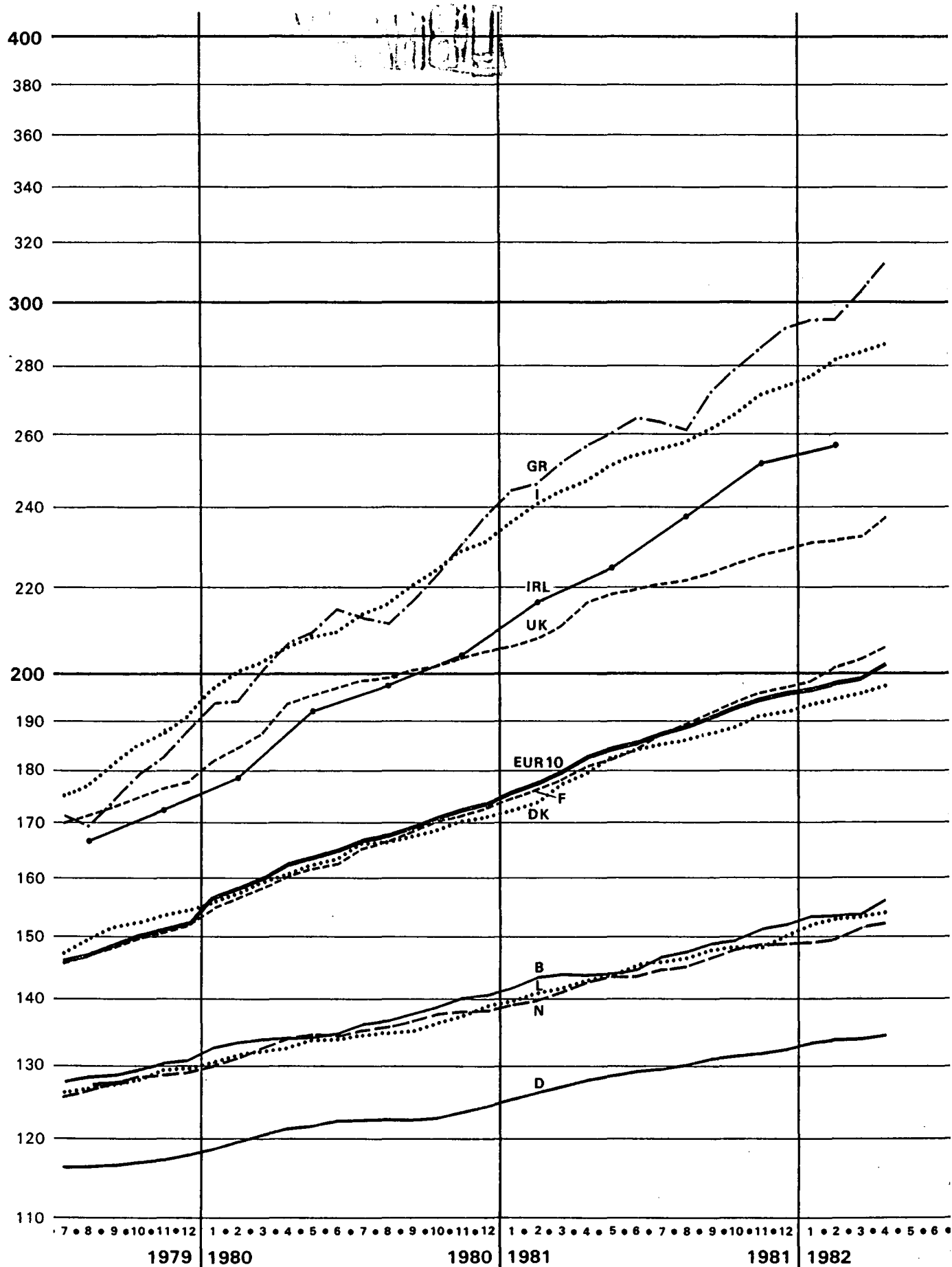
Also available in FR

CONSUMER PRICE INDICES

INDICES DES PRIX A LA CONSOMMATION

GENERAL INDEX

INDICE GÉNÉRAL



1975=100

CONSUMER PRICES

A

PRIX A LA CONSOMMATION

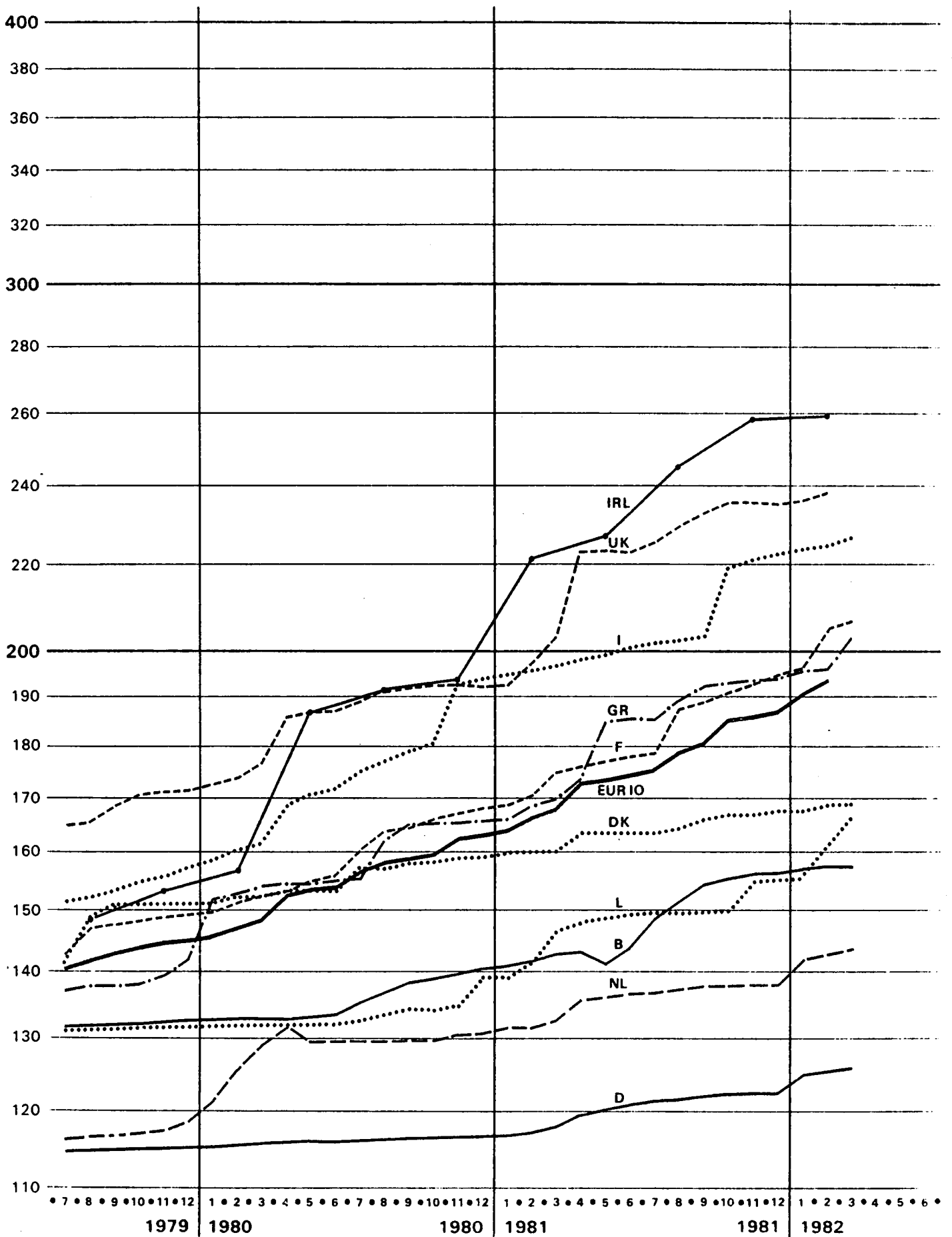
|          | EUR9   | BR<br>DEUTSCH<br>LAND | FRANCE  | ITALIA | NEDER-<br>LAND | BELGIQUE<br>BELGIE | LUXEM-<br>BOURG | UNITED<br>KINGDOM | IRELAND         | DANMARK | ELLAS | EUR10 | ESPAÑA | PORTU-<br>GAL | USA   | JAPAN |
|----------|--|-----------------------|---------|--------|----------------|--------------------|-----------------|-------------------|-----------------|---------|-------|-------|--------|---------------|-------|-------|
|          | PRICE INDICES 1975 = 100   |                       |         |        |                |                    |                 |                   | INDICES DE PRIX |         |       |       |        |               |       |       |
|          | R  |                       |         |        |                |                    |                 |                   |                 |         |       |       |        |               |       |       |
| 1977 0   | 122.4  | 108.1                 | 119.9   | 136.6  | 116.0          | 116.9              | 117.2           | 135.0             | 134.1           | 121.1   | 127.1 | :     | 146.5  | 153.0         | 112.6 | 118.1 |
| 1978 0   | 131.6  | 111.1                 | 130.8   | 153.2  | 120.9          | 122.1              | 120.8           | 146.2             | 144.3           | 133.3   | 143.0 | :     | 175.4  | 186.6         | 121.2 | 122.6 |
| 1979 0   | 144.8  | 115.6                 | 144.8   | 175.8  | 126.1          | 127.6              | 126.3           | 165.8             | 163.4           | 146.1   | 170.3 | :     | 202.9  | 231.8         | 134.9 | 127.0 |
| 1980 0   | 164.8  | 122.0                 | 164.5   | 213.1  | 134.9          | 136.1              | 134.2           | 195.6             | 193.2           | 164.0   | 212.6 | 165.5 | 234.5  | 270.2         | 153.1 | 137.2 |
| 1981 0   | 185.1  | 129.2                 | 186.5   | 254.8  | 144.2          | 146.5              | 145.1           | 218.9             | 232.6           | 183.3   | 264.7 | 186.3 | 268.6  | 324.2         | 168.9 | 144.0 |
| 1981 M   | 178.6  | 127.2                 | 178.2   | 243.8  | 141.1          | 144.0              | 141.7           | 210.7             |                 | 177.3   | 251.9 | 179.9 | 260.4  | 303.4         | 164.4 | 142.2 |
| 1981 M A | 181.4  | 128.0                 | 180.6   | 247.0  | 142.6          | 143.9              | 142.6           | 216.8             |                 | 179.4   | 256.9 | 182.7 | 263.0  | 311.8         | 165.5 | 143.3 |
| 1981 M J | 183.0  | 128.6                 | 182.2   | 251.0  | 143.3          | 143.8              | 143.7           | 218.2             | 225.0           | 182.3   | 260.0 | 184.3 | 264.3  | 313.6         | 166.8 | 144.8 |
| 1981 J   | 184.3  | 129.2                 | 184.0   | 253.8  | 143.5          | 144.6              | 145.2           | 219.4             |                 | 184.1   | 264.6 | 185.7 | 264.6  | 315.7         | 168.3 | 144.8 |
| 1981 J A | 185.9  | 129.7                 | 187.1   | 255.3  | 144.5          | 146.9              | 145.9           | 220.4             |                 | 185.3   | 263.1 | 187.2 | 269.7  | 324.8         | 170.2 | 144.1 |
| 1981 J S | 187.4  | 130.1                 | 189.5   | 257.7  | 145.0          | 147.7              | 146.4           | 222.0             | 237.6           | 186.1   | 261.1 | 188.6 | 273.1  | 333.6         | 171.5 | 143.2 |
| 1981 S   | 189.1  | 130.8                 | 191.7   | 261.4  | 146.7          | 149.0              | 147.7           | 223.3             |                 | 187.7   | 272.3 | 190.5 | 275.3  | 339.2         | 173.2 | 145.6 |
| 1981 S O | 191.1  | 131.2                 | 194.0   | 265.9  | 148.0          | 149.6              | 148.1           | 225.3             |                 | 188.7   | 279.4 | 192.6 | 278.3  | 345.3         | 173.6 | 146.1 |
| 1981 O   | 193.1  | 131.8                 | 195.8   | 270.7  | 148.4          | 151.1              | 149.0           | 227.7             | 251.5           | 191.0   | 285.4 | 194.7 | 280.5  | 349.6         | 174.1 | 145.7 |
| 1981 O N | 194.3  | 132.2                 | 196.9   | 273.5  | 148.3          | 152.1              | 150.0           | 229.1             |                 | 191.9   | 291.5 | 195.9 | 285.0  | 358.7         | 174.6 | 146.1 |
| 1981 D   | 196.1  | 133.4                 | 198.9   | 277.4  | 148.9          | 153.5              | 152.0           | 230.4             |                 | 193.3   | 294.7 | 197.8 | 290.1  | 365.1         | 175.2 | 146.2 |
| 1982 J   | 197.5  | 133.7                 | 201.0   | 281.5  | 149.7          | 153.9              | 153.5           | 230.5             | 257.4           | 194.4   | 294.1 | 199.1 | 292.4  | 375.8         | 175.8 | 146.2 |
| 1982 J F | 199.0  | 133.9                 | 203.3   | 283.8  | 151.1          | 154.1              | 153.6           | 232.5             |                 | 196.1   | 303.7 | 200.7 | 296.7  | 385.5         | 175.0 | 146.3 |
| 1982 F   | 201.3  | 134.5                 | 205.6 P | 286.4  | 151.8 P        | 156.0              | 154.1           | 237.2             |                 | 197.3 P | 312.8 | 203.2 | :      | :             | 175.6 | :     |
|          | RATE OF INCREASE OVER ONE MONTH (IRELAND 3 MONTHS) (T/T-1) TAUX DE CROISSANCE SUR UN MOIS (IRLANDE 3 MOIS) |                       |         |        |                |                    |                 |                   |                 |         |       |       |        |               |       |       |
| 81M/81F  | 1.1  | 0.7                   | 1.0     | 1.4    | 0.9            | 0.6                | 0.8             | 1.5               |                 | 2.0     | 2.4   | 1.2   | 2.0    | 1.3           | 0.7   | 0.6   |
| 81A/81M  | 1.6  | 0.7                   | 1.3     | 1.3    | 1.1            | -0.1               | 0.6             | 2.9               |                 | 1.2     | 2.0   | 1.6   | 1.0    | 2.8           | 0.6   | 0.8   |
| 81M/81A  | 0.9  | 0.4                   | 0.9     | 1.6    | 0.5            | 0.0                | 0.8             | 0.6               | 3.9             | 1.6     | 1.2   | 0.9   | 0.5    | 0.6           | 0.8   | 1.0   |
| 81J/81M  | 0.7  | 0.5                   | 1.0     | 1.1    | 0.1            | 0.6                | 1.0             | 0.5               |                 | 1.0     | 1.8   | 0.8   | 0.1    | 0.7           | 0.9   | 0.0   |
| 81J/81J  | 0.9  | 0.4                   | 1.7     | 0.6    | 0.7            | 1.6                | 0.5             | 0.5               |                 | 0.7     | -0.5  | 0.8   | 2.0    | 2.9           | 1.1   | -0.5  |
| 81A/81J  | 0.8  | 0.3                   | 1.3     | 0.9    | 0.3            | 0.5                | 0.4             | 0.7               | 5.6             | 0.4     | -0.8  | 0.7   | 1.3    | 2.7           | 0.8   | -0.6  |
| 81S/81A  | 0.9  | 0.5                   | 1.2     | 1.4    | 1.2            | 0.9                | 0.9             | 0.6               |                 | 0.9     | 4.3   | 1.0   | 0.8    | 1.7           | 1.0   | 1.7   |
| 81O/81S  | 1.1  | 0.3                   | 1.2     | 1.7    | 0.9            | 0.4                | 0.3             | 0.9               |                 | 0.5     | 2.6   | 1.1   | 1.1    | 1.8           | 0.2   | 0.3   |
| 81M/81O  | 1.0  | 0.5                   | 0.9     | 1.8    | 0.3            | 1.0                | 0.6             | 1.1               | 5.9             | 1.2     | 2.1   | 1.1   | 0.8    | 1.2           | 0.3   | -0.3  |
| 81D/81M  | 0.6  | 0.3                   | 0.6     | 1.0    | -0.1           | 0.6                | 0.6             | 0.6               |                 | 0.5     | 2.1   | 0.6   | 1.6    | 2.6           | 0.3   | 0.3   |
| 82J/81D  | 0.9  | 0.9                   | 1.0     | 1.4    | 0.4            | 1.0                | 1.4             | 0.6               |                 | 0.7     | 1.1   | 1.0   | 1.8    | 1.8           | 0.4   | 0.1   |
| 82F/82J  | 0.7  | 0.2                   | 1.1     | 1.5    | 0.5            | 0.2                | 1.0             | 0.0               | 2.3             | 0.6     | -0.2  | 0.7   | 0.8    | 2.9           | 0.3   | 0.0   |
| 82M/82F  | 0.8  | 0.2                   | 1.1     | 0.8    | 0.9            | 0.2                | 0.1             | 0.9               |                 | 0.9     | 3.3   | 0.8   | 1.4    | 2.6           | -0.5  | 0.1   |
| 82A/82M  | 1.2  | 0.5                   | 1.1     | 0.9    | 0.5            | 1.2                | 0.3             | 2.0               |                 | 0.6     | 3.0   | 1.2   | :      | :             | 0.3   | :     |
|          | RATE OF INCREASE OVER 12 MONTHS (T/T-12) TAUX DE CROISSANCE SUR 12 MOIS                                    |                       |         |        |                |                    |                 |                   |                 |         |       |       |        |               |       |       |
| 81/80M   | 12.3   | 5.5                   | 12.5    | 20.4   | 6.5            | 7.6                | 7.4             | 12.6              |                 | 11.3    | 25.6  | 12.6  | 15.6   | 15.0          | 10.6  | 6.2   |
| 81/80A   | 12.1   | 5.6                   | 12.7    | 20.1   | 6.3            | 7.4                | 7.4             | 12.0              |                 | 11.8    | 24.3  | 12.4  | 15.6   | 17.4          | 10.0  | 5.2   |
| 81/80M   | 12.2   | 5.6                   | 12.7    | 20.8   | 6.4            | 7.0                | 7.6             | 11.7              | 17.1            | 12.0    | 24.3  | 12.5  | 15.4   | 18.2          | 9.8   | 5.4   |
| 81/80J   | 12.3   | 5.5                   | 13.2    | 21.0   | 6.7            | 7.3                | 8.4             | 11.3              |                 | 12.9    | 23.3  | 12.5  | 13.8   | 17.6          | 9.6   | 5.1   |
| 81/80J   | 12.0   | 5.8                   | 13.3    | 19.6   | 6.8            | 7.8                | 8.5             | 10.9              |                 | 11.6    | 23.5  | 12.3  | 14.5   | 19.8          | 10.7  | 4.3   |
| 81/80A   | 12.2   | 6.0                   | 13.7    | 19.2   | 6.8            | 8.1                | 8.5             | 11.4              | 20.1            | 11.6    | 23.7  | 12.5  | 14.6   | 21.8          | 10.9  | 3.8   |
| 81/80S   | 12.3   | 6.5                   | 13.9    | 18.7   | 7.2            | 8.4                | 9.4             | 11.4              |                 | 12.0    | 25.4  | 12.6  | 14.4   | 23.7          | 11.0  | 4.0   |
| 81/80O   | 12.5   | 6.7                   | 14.1    | 18.7   | 7.5            | 7.8                | 8.8             | 11.7              |                 | 11.9    | 25.4  | 12.8  | 14.6   | 24.6          | 10.2  | 4.2   |
| 81/80N   | 12.6   | 6.6                   | 14.3    | 18.3   | 7.5            | 7.8                | 8.5             | 12.0              | 23.3            | 12.2    | 23.8  | 12.8  | 13.7   | 25.3          | 9.6   | 3.7   |
| 81/80D   | 12.4   | 6.3                   | 13.9    | 18.1   | 7.3            | 8.1                | 8.0             | 12.0              |                 | 12.2    | 22.5  | 12.7  | 14.5   | 25.0          | 8.9   | 4.7   |
| 82/81J   | 12.2   | 6.3                   | 13.9    | 17.5   | 7.1            | 8.3                | 8.7             | 12.0              |                 | 12.3    | 20.9  | 12.5  | 14.2   | 23.7          | 8.4   | 3.5   |
| 82/81F   | 11.8   | 5.8                   | 13.9    | 17.1   | 7.1            | 7.6                | 9.1             | 11.0              | 18.9            | 11.8    | 19.5  | 12.0  | 14.5   | 25.5          | 7.7   | 3.4   |
| 82/81M   | 11.4   | 5.2                   | 14.1    | 16.4   | 7.1            | 7.1                | 8.4             | 10.3              |                 | 10.6    | 20.6  | 11.6  | 13.9   | 27.1          | 6.4   | 2.9   |
| 82/81A   | 11.0   | 5.0                   | 13.8    | 16.0   | 6.5            | 8.5                | 8.1             | 9.4               |                 | 10.0    | 21.8  | 11.2  | :      | :             | 6.1   | :     |

CONSUMER PRICES

DRINKS (HOME CONSUMPTION) AND TOBACCO

PRIX A LA CONSOMMATION

BOISSONS (A DOMICILE) ET TABAC



1975 = 100

CONSUMER PRICES  
DRINKS (HOME CONSUMPTION) AND TOBACCO

C

PRIX A LA CONSOMMATION  
BOISSONS (A DOMICILE) ET TABAC

|       | EUR9   | BR<br>DEUTSCH<br>LAND | FRANCE | ITALIA | NEDER-<br>LAND | BELGIQUE<br>BELGIE | LUXEM-<br>BOURG | UNITED<br>KINGDOM | IRELAND | DANMARK | ELLAS | EUR10 | ESPAÑA | PORTU-<br>GAL | USA |
|-------|--|-----------------------|--------|--------|----------------|--------------------|-----------------|-------------------|---------|---------|-------|-------|--------|---------------|-----|
|       | PRICE INDICES 1975 = 100 INDICES DE PRIX   |                       |        |        |                |                    |                 |                   |         |         |       |       |        |               |     |
| 1977  | 119.8  | 109.4                 | 117.2  | 122.0  | 107.9          | 119.3              | 119.3           | 136.5             | 123.0   | 122.0   | 114.8 |       |        | 137.2         |     |
| 1978  | 129.3  | 111.0                 | 129.3  | 137.8  | 114.1          | 129.1              | 125.2           | 145.5             | 128.5   | 135.0   | 124.2 |       |        | 199.5         |     |
| 1979  | 139.1  | 113.2                 | 143.5  | 150.9  | 116.0          | 131.7              | 131.3           | 159.1             | 146.3   | 144.0   | 136.9 |       |        | 294.8         |     |
| 1980  | 155.4  | 116.1                 | 158.8  | 176.3  | 128.8          | 135.8              | 133.6           | 185.9             | 182.1   | 155.2   | 158.4 |       |        | 242.7         |     |
| 1981  | 169.4  | 120.3                 | 181.6  | 174.0  | 135.8          | 147.7              | 148.5           | 221.2             | 237.6   | 163.7   | 183.0 |       |        | 291.4         |     |
| 1981  | 165.9  | 117.6                 | 171.2  | 195.7  | 131.4          | 141.4              | 141.3           | 197.9             | 220.8   | 160.0   | 168.8 |       |        | 262.9         |     |
| 1981  | 167.9  | 118.0                 | 174.2  | 196.5  | 132.6          | 142.8              | 146.6           | 202.8             | 202.8   | 160.0   | 169.9 |       |        | 266.9         |     |
| 1981  | 173.0  | 119.7                 | 175.8  | 198.3  | 136.1          | 143.0              | 148.2           | 222.3             | 222.3   | 163.0   | 174.0 |       |        | 269.5         |     |
| 1981  | 173.6  | 120.2                 | 177.0  | 199.5  | 136.5          | 141.1              | 148.6           | 222.4             | 226.6   | 163.0   | 184.6 |       |        | 277.1         |     |
| 1981  | 174.3  | 120.6                 | 178.0  | 200.3  | 136.8          | 143.5              | 149.5           | 222.3             | 222.3   | 163.0   | 185.1 |       |        | 291.2         |     |
| 1981  | 175.6  | 121.0                 | 179.1  | 201.2  | 136.9          | 148.6              | 149.7           | 224.7             | 224.7   | 163.0   | 185.0 |       |        | 295.3         |     |
| 1981  | 178.8  | 121.4                 | 187.4  | 201.7  | 137.2          | 151.2              | 149.7           | 229.4             | 244.3   | 164.0   | 189.4 |       |        | 299.9         |     |
| 1981  | 180.4  | 121.7                 | 189.1  | 203.1  | 137.5          | 154.0              | 149.9           | 232.9             | 232.9   | 164.0   | 192.1 |       |        | 308.8         |     |
| 1981  | 185.1  | 122.0                 | 190.7  | 219.6  | 137.6          | 155.0              | 150.0           | 235.9             | 235.9   | 165.0   | 192.8 |       |        | 319.7         |     |
| 1981  | 185.8  | 122.2                 | 192.4  | 220.6  | 137.9          | 155.5              | 154.8           | 235.9             | 258.6   | 167.0   | 193.5 |       |        | 320.1         |     |
| 1981  | 186.5  | 122.3                 | 194.2  | 221.7  | 137.9          | 155.8              | 155.0           | 235.8             | 235.8   | 168.0   | 194.0 |       |        | 326.5         |     |
| 1981  | 190.4  | 124.6                 | 195.8  | 233.4  | 141.6          | 156.3              | 155.3           | 236.6             | 236.6   | 168.0   | 195.7 |       |        | 333.5         |     |
| 1982  | 193.4  | 125.1                 | 205.0  | 234.8  | 142.9          | 156.7              | 160.3           | 238.1             | 259.6   | 168.0   | 195.8 |       |        | 335.9         |     |
| 82    | 125.4  | 206.2                 | 236.5  | 143.2  | 156.6          | 166.3              | 166.3           | 238.1             | 259.6   | 169.0   | 202.4 |       |        | 338.6         |     |
|       | RATE OF INCREASE OVER ONE MONTH (IRELAND 3 MONTHS) (T/T-1) TAUX DE CROISSANCE SUR UN MOIS (IRLANDE 3 MOIS) |                       |        |        |                |                    |                 |                   |         |         |       |       |        |               |     |
| 81    | 1.2  | 0.3                   | 1.4    | 0.6    | 0.0            | 0.4                | 1.6             | 2.9               | 13.8    | 0.0     | 1.7   |       |        | 1.5           |     |
| 81    | 3.0  | 0.3                   | 1.8    | 0.4    | 0.9            | 1.0                | 3.8             | 2.5               | 0.0     | 0.0     | 0.7   |       |        | 1.5           |     |
| 81    | 0.4  | 1.4                   | 0.9    | 0.9    | 2.6            | 0.1                | 1.1             | 9.6               | 2.6     | 1.9     | 2.4   |       |        | 1.0           |     |
| 81    | 0.3  | 0.4                   | 0.7    | 0.6    | 0.0            | -1.3               | 0.3             | 0.0               | 0.0     | 0.0     | 6.1   |       |        | 2.8           |     |
| 81    | 0.8  | 0.3                   | 0.6    | 0.4    | 0.2            | 1.7                | 0.6             | -0.0              | 0.0     | 0.0     | 0.3   |       |        | 5.1           |     |
| 81    | 1.8  | 0.3                   | 0.6    | 0.4    | 0.1            | 3.6                | 0.1             | 1.1               | 7.8     | 0.0     | -0.0  |       |        | 1.4           |     |
| 81    | 0.9  | 0.3                   | 4.6    | 0.2    | 0.2            | 1.7                | 0.0             | 2.1               | 0.0     | 0.6     | 2.3   |       |        | 1.6           |     |
| 81    | 2.6  | 0.2                   | 0.9    | 0.7    | 0.2            | 1.9                | 0.1             | 1.5               | 5.9     | 1.2     | 1.4   |       |        | 3.0           |     |
| 81    | 0.4  | 0.2                   | 0.8    | 8.1    | 0.1            | 0.6                | 0.1             | 1.3               | 0.0     | 0.6     | 0.4   |       |        | 3.5           |     |
| 81    | 0.4  | 0.2                   | 0.9    | 0.5    | 0.2            | 0.3                | 3.2             | 0.0               | 5.9     | 0.0     | 0.4   |       |        | 0.1           |     |
| 81    | 0.4  | 0.1                   | 0.9    | 0.5    | 0.0            | 0.2                | 0.1             | -0.0              | 0.0     | 0.6     | 0.2   |       |        | 2.0           |     |
| 82    | 2.1  | 1.9                   | 0.8    | 5.3    | 2.7            | 0.3                | 0.2             | 0.3               | 0.4     | 0.0     | 0.9   |       |        | 2.1           |     |
| 82    | 1.6  | 0.4                   | 4.7    | 0.6    | 0.9            | 0.3                | 3.2             | 0.6               | 0.4     | 0.6     | 0.0   |       |        | 0.7           |     |
| 82    | 0.2  | 0.2                   | 0.6    | 0.7    | 0.2            | -0.1               | 3.7             | 0.0               | 0.4     | 0.0     | 3.3   |       |        | 0.8           |     |
|       | RATE OF INCREASE OVER 12 MONTHS (T/T-12) TAUX DE CROISSANCE SUR 12 MOIS                                    |                       |        |        |                |                    |                 |                   |         |         |       |       |        |               |     |
| 81/80 | 12.9   | 1.9                   | 13.5   | 22.3   | 4.5            | 6.1                | 6.7             | 14.1              | 41.3    | 5.3     | 10.5  |       |        | 7.1           |     |
| 81/80 | 13.2   | 2.0                   | 14.7   | 22.0   | 2.6            | 7.1                | 10.7            | 14.9              | 0.0     | 5.5     | 10.3  |       |        | 10.5          |     |
| 81/80 | 13.4   | 3.4                   | 14.8   | 17.2   | 6.9            | 7.3                | 11.9            | 19.6              | 21.4    | 6.5     | 12.7  |       |        | 13.0          |     |
| 81/80 | 13.3   | 3.5                   | 14.3   | 17.1   | 5.2            | 5.7                | 12.2            | 19.1              | 0.0     | 6.5     | 12.7  |       |        | 16.9          |     |
| 81/80 | 13.4   | 4.0                   | 14.4   | 16.9   | 5.4            | 7.2                | 12.6            | 18.9              | 0.0     | 6.5     | 12.7  |       |        | 23.4          |     |
| 81/80 | 12.4   | 4.1                   | 11.9   | 15.2   | 5.4            | 9.4                | 12.6            | 18.7              | 0.0     | 6.5     | 19.2  |       |        | 19.4          |     |
| 81/80 | 13.2   | 4.4                   | 14.4   | 13.8   | 5.7            | 10.5               | 12.1            | 20.2              | 27.7    | 4.5     | 17.1  |       |        | 21.4          |     |
| 81/80 | 13.5   | 4.6                   | 14.8   | 13.4   | 5.9            | 11.5               | 11.6            | 21.5              | 0.0     | 5.5     | 16.4  |       |        | 31.6          |     |
| 81/80 | 15.9   | 4.6                   | 15.0   | 21.7   | 5.9            | 11.4               | 11.7            | 22.5              | 0.0     | 5.7     | 16.8  |       |        | 31.2          |     |
| 81/80 | 14.2   | 4.7                   | 15.2   | 14.6   | 5.8            | 11.3               | 15.0            | 22.5              | 33.3    | 5.5     | 17.1  |       |        | 29.8          |     |
| 81/80 | 14.3   | 4.6                   | 15.6   | 14.5   | 5.6            | 11.1               | 11.5            | 22.6              | 0.0     | 5.7     | 17.0  |       |        | 30.7          |     |
| 82/81 | 16.1   | 6.3                   | 15.9   | 19.9   | 5.8            | 11.0               | 11.6            | 25.8              | 0.0     | 5.0     | 18.0  |       |        | 28.8          |     |
| 82/81 | 16.5   | 6.4                   | 19.7   | 20.0   | 8.8            | 10.8               | 13.4            | 20.3              | 17.6    | 5.6     | 16.0  |       |        | 27.8          |     |
| 82/81 | 0.0  | 6.3                   | 18.4   | 20.4   | 8.0            | 9.7                | 13.4            | 0.0               | 0.0     | 5.6     | 19.1  |       |        | 26.9          |     |

CONSUMER PRICES

PRIX A LA CONSOMMATION

FOOD (EXCL. DRINKS AND MEALS OUT)

B

PRODUITS ALIMENTAIRES (SANS BOISSONS ET REPAS A L'EXTERIEUR)

|        | EUR9   | BR<br>DEUTSCH<br>LAND | FRANCE | ITALIA | NEDER-<br>LAND | BELGIQUE<br>BELGIE | LUXEM-<br>BOURG | UNITED<br>KINGDOM | IRELAND   | DANMARK | ELLAS | EUR10 | ESPAÑA | PORTU-<br>GAL | USA |
|--------|--|-----------------------|--------|--------|----------------|--------------------|-----------------|-------------------|---|---------|-------|-------|--------|---------------|-----|
|        | PRICE INDICES                                      |                       |        |        |                |                    |                 |                   | INDICES DE PRIX   |         |       |       |        |               |     |
|        | 1975 = 100   |                       |        |        |                |                    |                 |                   |   |         |       |       |        |               |     |
| 1977   | 128.2  | 109.6                 | 125.8  | 139.4  | 119.3          | 118.1              | 124.0           | 143.7             | 135.4   | 129.0   | 129.8 | 146.2 | 171.0  | 109.6         |     |
| 1978   | 136.8  | 110.1                 | 135.5  | 157.4  | 118.6          | 119.6              | 127.3           | 153.7             | 148.4   | 140.0   | 148.3 | 174.1 | 200.6  | 120.5         |     |
| 1979   | 148.7  | 111.2                 | 147.1  | 179.2  | 120.5          | 120.7              | 130.1           | 172.3             | 170.4   | 147.8   | 176.2 | 191.8 | 256.5  | 133.7         |     |
| 1980   | 164.2  | 116.1                 | 161.3  | 207.3  | 125.1          | 125.7              | 134.3           | 192.6             | 186.2   | 162.6   | 224.8 | 209.1 | 295.2  | 145.2         |     |
| 1981   | 183.6  | 122.0                 | 183.8  | 245.0  | 131.9          | 132.6              | 143.8           | 209.0             | 212.6   | 182.3   | 292.5 | 237.8 | 354.9  | 156.6         |     |
| 1981   | 174.7  | 120.1                 | 170.4  | 229.4  | 128.1          | 130.8              | 139.2           | 202.1             | 201.0   | 172.0   | 275.9 | 228.0 | 320.0  | 154.4         |     |
| 1981   | 176.8  | 121.2                 | 172.6  | 233.4  | 129.2          | 131.4              | 139.6           | 203.9             | 201.0   | 175.0   | 279.0 | 232.5 | 325.0  | 155.2         |     |
| 1981   | 179.2  | 123.3                 | 174.5  | 237.4  | 130.0          | 130.2              | 140.2           | 204.3             | 207.8   | 178.0   | 282.9 | 231.6 | 340.6  | 155.6         |     |
| 1981   | 181.2  | 123.3                 | 177.4  | 241.2  | 131.0          | 129.8              | 141.7           | 208.3             | 207.8   | 180.0   | 286.4 | 230.3 | 340.9  | 155.4         |     |
| 1981   | 183.0  | 122.8                 | 179.6  | 245.5  | 130.6          | 129.5              | 144.2           | 210.9             | 207.8   | 182.0   | 290.2 | 228.8 | 342.2  | 156.0         |     |
| 1981   | 184.2  | 122.1                 | 182.2  | 247.6  | 132.1          | 131.1              | 145.1           | 210.7             | 207.8   | 182.0   | 290.2 | 228.8 | 342.2  | 156.0         |     |
| 1981   | 184.4  | 120.7                 | 184.5  | 248.8  | 132.1          | 131.1              | 144.9           | 210.7             | 207.8   | 182.0   | 290.2 | 228.8 | 342.2  | 156.0         |     |
| 1981   | 186.9  | 121.2                 | 188.0  | 253.5  | 133.9          | 134.2              | 146.1           | 210.6             | 207.8   | 188.0   | 299.6 | 244.2 | 376.7  | 158.5         |     |
| 1981   | 189.1  | 122.2                 | 190.9  | 256.4  | 135.0          | 135.5              | 147.6           | 213.1             | 207.8   | 191.0   | 306.7 | 247.4 | 382.6  | 158.3         |     |
| 1981   | 191.1  | 123.4                 | 192.9  | 259.2  | 136.0          | 137.5              | 148.8           | 215.4             | 223.3   | 192.0   | 318.9 | 248.4 | 386.2  | 158.0         |     |
| 1981   | 193.0  | 124.0                 | 194.7  | 262.6  | 136.5          | 139.2              | 149.5           | 217.7             | 207.8   | 192.0   | 326.5 | 254.1 | 399.8  | 158.4         |     |
| 1982   | 195.9  | 125.4                 | 196.6  | 265.9  | 137.5          | 141.1              | 151.7           | 223.7             | 207.8   | 194.0   | 325.9 | 260.1 | 404.5  | 160.2         |     |
| 1982   | 197.5  | 126.6                 | 198.6  | 269.1  | 138.2          | 142.4              | 153.8           | 224.4             | 230.8   | 194.0   | 329.1 | 260.1 | 418.7  | 161.5         |     |
| 1982   | 197.5  | 127.4                 | 200.8  | 270.8  | 139.2          | 142.8              | 154.0           | 224.4             | 230.8   | 196.0   | 336.9 | 261.2 | 436.6  | 161.3         |     |
|        | RATE OF INCREASE OVER ONE MONTH (IRELAND 3 MONTHS) |                       |        |        |                |                    |                 |                   | (T/T-1) TAUX DE CROISSANCE SUR UN MOIS (IRLANDE 3 MOIS) |         |       |       |        |               |     |
| 81/81F | 1.2  | 0.6                   | 1.1    | 2.0    | 0.6            | 0.5                | 0.4             | 0.8               | 4.4   | 1.2     | 1.6   | -0.3  | 1.4    | 0.8           |     |
| 81/81M | 1.2  | 0.9                   | 1.3    | 1.7    | 0.9            | 0.9                | 0.3             | 0.9               | 4.4   | 1.7     | 1.1   | -2.0  | 1.6    | 0.5           |     |
| 81/81A | 1.3  | 1.7                   | 1.1    | 1.7    | 0.6            | -0.5               | 0.4             | 1.2               | 3.4   | 1.7     | 1.4   | -0.4  | 4.8    | 0.3           |     |
| 81/81M | 1.1  | 0.0                   | 1.7    | 1.6    | 0.8            | -0.3               | 1.1             | 1.0               | 3.4   | 1.1     | 1.2   | -0.6  | 0.1    | -0.1          |     |
| 81/81J | 1.0  | -0.4                  | 1.2    | 1.8    | 0.3            | -0.5               | 1.8             | 1.2               | 3.4   | 1.1     | 1.3   | -0.7  | 0.4    | 0.4           |     |
| 81/81J | 0.6  | 1.1                   | 1.4    | 0.8    | 1.1            | 0.6                | 0.6             | 0.0               | 5.1   | 1.0     | -1.9  | 3.6   | 4.0    | 1.0           |     |
| 81/81S | 0.1  | -1.1                  | 1.3    | 0.5    | 0.3            | 0.5                | -0.1            | -0.9              | 5.1   | 1.6     | 1.0   | 2.4   | 5.1    | 0.4           |     |
| 81/81A | 1.4  | 0.4                   | 1.1    | 1.9    | 0.8            | 0.8                | 0.8             | 0.0               | 5.1   | 1.6     | 4.3   | 0.6   | 0.7    | 0.2           |     |
| 81/81O | 1.2  | 0.8                   | 1.5    | 1.1    | 0.8            | 0.7                | 1.0             | 1.2               | 2.2   | 1.6     | 2.4   | 1.3   | 1.6    | -0.1          |     |
| 81/81O | 1.0  | 1.0                   | 1.0    | 1.1    | 0.7            | 1.7                | 0.8             | 1.1               | 2.2   | 0.5     | 4.0   | 0.4   | 0.9    | -0.2          |     |
| 81/81N | 1.0  | 0.5                   | 0.9    | 1.3    | 0.4            | 1.2                | 0.0             | 0.5               | 3.4   | 0.0     | 2.4   | 2.3   | 3.5    | 0.3           |     |
| 82/82J | 1.5  | 1.1                   | 1.0    | 1.3    | 0.7            | 1.9                | 1.5             | 0.8               | 3.4   | 1.0     | -0.2  | 2.4   | 1.2    | 1.2           |     |
| 82/82J | 0.8  | 1.0                   | 1.0    | 1.2    | 0.5            | 1.4                | 1.4             | 0.8               | 3.4   | 0.0     | 1.0   | 0.0   | 3.5    | 0.8           |     |
| 82/82F | 0.6  | 0.6                   | 1.1    | 0.6    | 0.7            | 0.3                | 0.1             | 0.1               | 3.4   | 1.0     | 2.4   | 0.4   | 4.3    | -0.1          |     |
|        | RATE OF INCREASE OVER 12 MONTHS                    |                       |        |        |                |                    |                 |                   | (T/T-12) TAUX DE CROISSANCE SUR 12 MOIS                 |         |       |       |        |               |     |
| 81/80F | 10.0   | 4.8                   | 10.0   | 15.5   | 3.4            | 5.2                | 5.0             | 8.7               | 12.0  | 10.3    | 29.8  | 12.7  | 9.9    | 10.6          |     |
| 81/80M | 10.3   | 5.3                   | 10.9   | 16.1   | 4.4            | 6.1                | 5.0             | 7.8               | 12.0  | 10.8    | 26.7  | 15.2  | 10.4   | 10.1          |     |
| 81/80A | 11.1   | 6.1                   | 11.6   | 17.8   | 4.6            | 6.2                | 5.3             | 7.7               | 12.9  | 11.9    | 26.7  | 14.7  | 15.1   | 9.6           |     |
| 81/80M | 11.8   | 5.6                   | 12.9   | 19.1   | 5.4            | 6.6                | 6.3             | 8.2               | 12.9  | 12.5    | 26.4  | 14.3  | 17.0   | 8.8           |     |
| 81/80J | 12.2   | 4.4                   | 13.7   | 20.3   | 5.1            | 7.9                | 6.6             | 8.6               | 12.9  | 13.0    | 27.0  | 11.7  | 15.8   | 8.6           |     |
| 81/80J | 11.7   | 4.0                   | 13.9   | 19.5   | 5.8            | 7.7                | 7.6             | 8.2               | 15.7  | 10.3    | 30.0  | 13.5  | 19.4   | 8.4           |     |
| 81/80A | 11.3   | 2.9                   | 14.1   | 18.8   | 5.4            | 7.4                | 7.1             | 7.6               | 15.7  | 10.8    | 32.7  | 13.6  | 24.3   | 7.2           |     |
| 81/80S | 12.1   | 4.4                   | 15.1   | 19.1   | 5.8            | 7.9                | 7.9             | 8.1               | 15.7  | 11.9    | 36.0  | 13.8  | 24.5   | 6.5           |     |
| 81/80O | 13.0   | 6.1                   | 15.9   | 18.9   | 6.6            | 8.8                | 8.8             | 8.3               | 16.0  | 14.4    | 36.7  | 14.4  | 26.5   | 5.8           |     |
| 81/80N | 13.3   | 6.2                   | 16.3   | 18.6   | 7.3            | 9.5                | 9.9             | 8.9               | 16.0  | 14.3    | 32.4  | 13.6  | 27.9   | 4.8           |     |
| 81/80D | 13.4   | 5.9                   | 16.5   | 18.7   | 7.6            | 9.5                | 9.9             | 9.9               | 16.0  | 14.3    | 27.0  | 13.9  | 29.3   | 4.3           |     |
| 82/81J | 13.5   | 5.0                   | 16.6   | 18.7   | 8.0            | 9.9                | 10.0            | 11.1              | 14.8  | 14.1    | 28.0  | 13.7  | 28.2   | 4.6           |     |
| 82/81F | 13.5   | 5.4                   | 16.5   | 17.3   | 7.9            | 9.9                | 10.0            | 11.0              | 14.8  | 12.8    | 19.3  | 14.1  | 30.8   | 4.6           |     |
| 82/81M | 13.5   | 5.1                   | 16.3   | 16.0   | 7.7            | 8.7                | 10.3            | 11.0              | 14.8  | 12.0    | 20.7  | 12.4  | 34.3   | 4.0           |     |

CONSUMER PRICES

CLOTHING AND FOOTWEAR (INCL, REPAIRS)

D

PRIX A LA CONSOMMATION

HABILEMENT ET CHAUSSURES (Y COMPRIS REPARATION)

|         | EUR9   | BR<br>DEUTSCH<br>LAND | FRANCE | ITALIA | NEDER-<br>LAND | BELGIQUE<br>BELGIE | LUXEM-<br>BOURG | UNITED<br>KINGDOM | IRELAND         | DANMARK | ELLAS | EUR10 | ESPAÑA | PORTU-<br>GAL | USA |
|---------|--|-----------------------|--------|--------|----------------|--------------------|-----------------|-------------------|-----------------|---------|-------|-------|--------|---------------|-----|
|         | PRICE INDICES  |                       |        |        |                |                    |                 | 1975 = 100        | INDICES DE PRIX |         |       |       |        |               |     |
| 1977    | 119.7  | 108.4                 | 117.5  | 142.3  | 114.2          | 112.5              | 111.2           | 125.5             | 127.2           | 115.0   | 128.0 | 149.8 | 121.0  | 108.4         |     |
| 1978    | 130.1  | 113.1                 | 129.6  | 163.4  | 121.3          | 119.6              | 121.0           | 136.4             | 142.1           | 126.0   | 146.0 | 184.1 | 144.5  | 112.2         |     |
| 1979    | 141.3  | 118.1                 | 143.8  | 186.1  | 126.0          | 124.3              | 128.5           | 149.5             | 156.6           | 136.0   | 178.7 | 225.4 | 180.7  | 117.1         |     |
| 1980    | 156.7  | 124.9                 | 160.0  | 224.7  | 134.4          | 127.5              | 138.2           | 164.3             | 179.7           | 143.9   | 212.1 | 271.6 | 242.9  | 125.4         |     |
| 1981    | 168.9  | 130.3                 | 175.3  | 264.0  | 138.6          | 133.2              | 148.2           | 166.8             | 205.6           | 152.1   | 257.7 | 308.5 | 286.8  | 131.3         |     |
| 1981 F  | 164.3  | 129.0                 | 169.4  | 248.8  | 134.4          | 131.1              | 144.6           | 165.7             | 196.6           | 149.0   | 213.5 | 295.2 | 275.7  | 127.9         |     |
| 1981 M  | 165.8  | 129.6                 | 170.9  | 252.9  | 138.1          | 131.9              | 144.8           | 166.2             | 196.6           | 152.0   | 217.8 | 298.6 | 277.8  | 130.1         |     |
| 1981 A  | 167.3  | 130.0                 | 172.5  | 257.7  | 141.5          | 131.9              | 146.8           | 166.2             | 201.9           | 153.0   | 243.8 | 302.6 | 279.5  | 131.0         |     |
| 1981 J  | 168.1  | 130.6                 | 173.7  | 260.0  | 141.9          | 132.2              | 148.2           | 166.2             | 201.9           | 153.0   | 247.2 | 304.8 | 281.3  | 131.0         |     |
| 1981 J  | 168.3  | 130.8                 | 174.6  | 261.3  | 139.5          | 132.6              | 148.9           | 165.8             | 207.9           | 155.0   | 248.3 | 307.1 | 283.7  | 130.6         |     |
| 1981 J  | 167.9  | 131.0                 | 175.3  | 262.2  | 127.6          | 132.7              | 148.9           | 165.7             | 207.9           | 150.0   | 244.5 | 308.0 | 283.9  | 129.8         |     |
| 1981 A  | 168.5  | 131.3                 | 175.8  | 262.7  | 128.7          | 132.8              | 149.2           | 166.9             | 207.9           | 150.0   | 242.7 | 308.9 | 283.8  | 131.7         |     |
| 1981 S  | 170.8  | 132.3                 | 177.2  | 268.1  | 139.6          | 133.3              | 149.4           | 167.7             | 215.8           | 154.0   | 244.2 | 312.9 | 287.7  | 134.0         |     |
| 1981 O  | 173.9  | 133.0                 | 179.6  | 278.0  | 146.8          | 134.5              | 150.8           | 168.8             | 215.8           | 155.0   | 248.2 | 318.9 | 298.0  | 134.6         |     |
| 1981 D  | 175.5  | 133.9                 | 181.9  | 283.2  | 147.9          | 136.5              | 151.2           | 168.2             | 215.8           | 156.0   | 246.7 | 324.5 | 305.6  | 134.6         |     |
| 1981 J  | 176.1  | 134.1                 | 183.1  | 286.1  | 147.1          | 138.2              | 151.4           | 167.7             | 220.2           | 156.0   | 247.7 | 327.2 | 305.6  | 135.9         |     |
| 1982 J  | 175.7  | 134.4                 | 183.9  | 287.7  | 136.3          | 139.0              | 151.4           | 166.6             | 220.2           | 151.0   | 249.0 | 329.1 | 311.2  | 131.6         |     |
| 1982 F  | 177.4  | 135.4                 | 185.0  | 290.2  | 141.5          | 139.7              | 152.3           | 167.7             | 220.2           | 159.0   | 248.3 | 331.4 | 314.9  | 132.1         |     |
| 1982 M  | 177.4  | 135.9                 | 187.2  | 294.2  | 145.8          | 139.7              | 152.8           | 167.7             | 220.2           | 162.0   | 257.7 | 336.0 | 317.8  | 134.3         |     |
|         | RATE OF INCREASE OVER ONE MONTH (IRELAND 3 MONTHS) (T/T-1) TAUX DE CROISSANCE SUR UN MOIS (IRLANDE 3 MOIS) |                       |        |        |                |                    |                 |                   |                 |         |       |       |        |               |     |
| 81F/81J | 0.7  | 0.6                   | 0.5    | 0.9    | 3.5            | 0.4                | 0.3             | -0.2              | 4.1             | 4.9     | -5.3  | 0.7   | 1.2    | 0.5           |     |
| 81M/81F | 0.9  | 0.5                   | 0.9    | 1.6    | 2.8            | 0.6                | 0.1             | 0.3               | 4.1             | 2.0     | 11.4  | 1.2   | 0.8    | 1.7           |     |
| 81A/81M | 0.9  | 0.3                   | 0.9    | 1.9    | 2.5            | 0.0                | 1.4             | 0.0               | 2.7             | 0.7     | 2.5   | 1.3   | 0.6    | 0.7           |     |
| 81J/81A | 0.5  | 0.5                   | 0.7    | 0.9    | 0.3            | 0.2                | 1.0             | 0.0               | 2.7             | 0.0     | 1.4   | 0.7   | 0.6    | 0.0           |     |
| 81J/81J | 0.2  | 0.2                   | 0.5    | 0.5    | -1.7           | 0.3                | 0.5             | -0.2              | 2.7             | -1.3    | 8.5   | 0.8   | 0.9    | -0.3          |     |
| 81A/81J | -0.3   | 0.2                   | 0.4    | 0.3    | -8.5           | 0.1                | 0.0             | -0.1              | 3.0             | -3.2    | -1.4  | 0.3   | 0.1    | -0.6          |     |
| 81S/81A | 0.3  | 0.2                   | 0.3    | 0.2    | 0.9            | 0.1                | 0.2             | 0.7               | 3.0             | 0.0     | -8.2  | 0.3   | -0.0   | 1.5           |     |
| 81O/81S | 1.4  | 0.8                   | 0.8    | 2.1    | 8.5            | 0.4                | 0.1             | 0.5               | 3.0             | 2.7     | 8.9   | 1.3   | 1.4    | 8.8           |     |
| 81O/81O | 1.8  | 0.5                   | 1.4    | 3.7    | 5.2            | 0.9                | 0.9             | 0.7               | 3.8             | 0.6     | 9.1   | 1.9   | 3.6    | 0.4           |     |
| 81N/81O | 0.9  | 0.7                   | 1.3    | 1.9    | 0.7            | 1.5                | 0.3             | -0.4              | 3.8             | 0.6     | 2.9   | 1.7   | 2.6    | 0.0           |     |
| 81D/81N | 0.4  | 0.1                   | 0.7    | 1.0    | -0.5           | 1.2                | 0.1             | -0.3              | 3.8             | 0.0     | 1.4   | 0.9   | 2.4    | -0.5          |     |
| 82J/81D | -0.2   | 0.2                   | 0.4    | 0.6    | -7.3           | 0.6                | 0.0             | -0.7              | 2.0             | -3.2    | -1.4  | 0.6   | -0.5   | -1.7          |     |
| 82F/82J | 0.9  | 0.7                   | 0.6    | 0.9    | 3.8            | 0.5                | 0.6             | 0.7               | 2.0             | 5.3     | -7.5  | 0.7   | 1.2    | 0.4           |     |
| 82M/82F | 1.1  | 0.4                   | 1.2    | 1.4    | 3.0            | 0.0                | 0.3             | 0.3               | 2.0             | 1.9     | 12.7  | 1.4   | 0.9    | 1.6           |     |
|         | RATE OF INCREASE OVER 12 MONTHS (T/T-12) TAUX DE CROISSANCE SUR 12 MOIS                                    |                       |        |        |                |                    |                 |                   |                 |         |       |       |        |               |     |
| 81/80F  | 8.9  | 5.2                   | 10.1   | 19.0   | 5.5            | 4.0                | 7.9             | 3.7               | 15.4            | 4.9     | 21.0  | 15.8  | 28.8   | 5.9           |     |
| 81/80M  | 8.3  | 4.9                   | 10.0   | 18.2   | 3.0            | 4.6                | 7.5             | 2.3               | 15.4            | 6.3     | 26.2  | 15.2  | 29.2   | 5.2           |     |
| 81/80A  | 8.0  | 4.8                   | 9.7    | 18.2   | 2.4            | 4.6                | 7.6             | 1.7               | 13.8            | 6.3     | 18.1  | 14.1  | 24.0   | 5.1           |     |
| 81/80J  | 7.9  | 5.0                   | 9.4    | 17.9   | 3.1            | 4.4                | 7.1             | 1.2               | 13.8            | 6.3     | 19.2  | 13.6  | 22.8   | 5.0           |     |
| 81/80J  | 7.7  | 5.0                   | 9.3    | 17.6   | 2.7            | 4.3                | 7.4             | -0.4              | 13.8            | 7.6     | 22.4  | 13.4  | 22.2   | 4.9           |     |
| 81/80J  | 7.4  | 5.0                   | 9.4    | 17.4   | 0.4            | 4.2                | 7.4             | -0.1              | 14.1            | 7.1     | 23.9  | 13.4  | 19.9   | 4.8           |     |
| 81/80A  | 7.4  | 4.8                   | 9.3    | 17.3   | -0.7           | 3.8                | 7.3             | 0.7               | 14.1            | 4.9     | 19.8  | 13.2  | 18.2   | 4.9           |     |
| 81/80S  | 7.3  | 4.8                   | 9.3    | 16.2   | 2.0            | 4.0                | 7.3             | 0.6               | 14.1            | 5.5     | 23.1  | 12.7  | 19.8   | 4.7           |     |
| 81/80O  | 7.6  | 4.9                   | 9.1    | 16.2   | 4.4            | 4.3                | 6.5             | 1.3               | 14.2            | 4.7     | 22.4  | 12.0  | 18.6   | 4.1           |     |
| 81/80N  | 7.7  | 5.1                   | 9.1    | 16.4   | 4.2            | 5.2                | 6.4             | 0.7               | 14.2            | 5.4     | 24.1  | 12.0  | 17.6   | 3.6           |     |
| 81/80D  | 7.8  | 5.1                   | 9.1    | 16.7   | 4.3            | 6.1                | 5.1             | 0.7               | 14.2            | 6.1     | 25.5  | 12.0  | 14.6   | 3.6           |     |
| 82/81J  | 7.7  | 4.8                   | 9.1    | 16.7   | 4.9            | 6.4                | 5.1             | 0.3               | 12.0            | 6.3     | 28.7  | 12.2  | 14.3   | 3.4           |     |
| 82/81F  | 8.0  | 5.0                   | 9.2    | 16.6   | 5.3            | 6.6                | 5.3             | 1.2               | 12.0            | 6.7     | 25.7  | 12.7  | 14.2   | 3.4           |     |
| 82/81M  | 1.1  | 4.9                   | 9.5    | 16.3   | 5.6            | 5.9                | 5.5             | 1.1               | 12.0            | 6.6     | 27.2  | 12.5  | 14.4   | 3.2           |     |

7

CONSUMER PRICES

E

PRIX A LA CONSOMMATION

RENT, FUEL AND POWER

LOYER, COMBUSTIBLES ET ENERGIE

|         | EUR9   | BR DEUTSCH LAND | FRANCE | ITALIA | NEDER- LAND | BELGIQUE BELGIE | LUXEM- BOURG | UNITED KINGDOM | IRELAND   | DANMARK | ELLAS | EUR10 | ESPANA | PORTU- GAL | USA |
|---------|--|-----------------|--------|--------|-------------|-----------------|--------------|----------------|---|---------|-------|-------|--------|------------|-----|
|         | PRICE INDICES 1975 = 100                                   |                 |        |        |             |                 |              |                | INDICES DE PRIX                                 |         |       |       |        |            |     |
| 1977    | 122.4  | 108.4           | 123.3  | 129.2  | 119.7       | 114.5           | 116.8        | 133.7          | 132.5   | 123.0   | 124.1 | 135.5 | 135.5  | 111.8      |     |
| 1978    | 130.7  | 111.5           | 133.9  | 140.9  | 127.4       | 122.8           | 120.0        | 143.5          | 135.6   | 134.0   | 139.6 | 162.2 | 162.2  | 121.6      |     |
| 1979    | 149.5  | 120.2           | 152.2  | 173.6  | 136.5       | 137.0           | 129.2        | 167.8          | 152.8   | 155.0   | 165.0 | 192.2 | 192.2  | 136.5      |     |
| 1980    | 181.1  | 128.0           | 183.7  | 232.4  | 151.1       | 152.6           | 142.0        | 214.3          | 206.0   | 182.3   | 212.9 | 233.8 | 233.8  | 157.9      |     |
| 1981    | 210.5  | 137.6           | 215.5  | 280.4  | 170.5       | 168.4           | 156.8        | 255.6          | 254.4   | 209.7   | 270.7 | 275.9 | 275.9  | 176.0      |     |
| 1981 F  | 196.9  | 133.9           | 202.0  | 260.5  | 164.5       | 163.1           | 151.9        | 232.2          | 233.3   | 197.0   | 258.4 | 261.3 | 261.3  | 168.4      |     |
| 1981 K  | 198.5  | 135.5           | 203.3  | 264.2  | 165.4       | 165.1           | 153.4        | 232.9          | 232.9   | 201.0   | 260.7 | 267.8 | 267.8  | 169.4      |     |
| 1981 A  | 205.0  | 135.6           | 207.6  | 268.8  | 165.6       | 165.0           | 153.9        | 251.8          | 251.8   | 202.0   | 264.4 | 272.7 | 272.7  | 170.7      |     |
| 1981 J  | 206.9  | 135.6           | 208.1  | 273.8  | 166.3       | 164.9           | 154.6        | 255.4          | 246.2   | 209.0   | 269.4 | 274.4 | 274.4  | 173.0      |     |
| 1981 U  | 209.6  | 136.0           | 210.4  | 281.5  | 166.5       | 166.7           | 155.0        | 258.4          | 258.4   | 212.0   | 270.6 | 275.2 | 275.2  | 175.2      |     |
| 1981 S  | 214.3  | 137.6           | 222.2  | 285.7  | 174.3       | 169.5           | 157.2        | 259.9          | 259.9   | 214.0   | 273.6 | 279.7 | 279.7  | 178.1      |     |
| 1981 D  | 215.9  | 139.7           | 223.8  | 287.1  | 174.7       | 170.3           | 159.0        | 261.5          | 260.9   | 215.0   | 273.9 | 280.5 | 280.5  | 179.7      |     |
| 1981 O  | 216.7  | 140.5           | 224.4  | 288.3  | 175.6       | 172.3           | 162.4        | 262.0          | 262.0   | 215.0   | 278.5 | 281.6 | 281.6  | 182.1      |     |
| 1981 N  | 219.9  | 140.7           | 227.5  | 294.6  | 175.9       | 172.2           | 159.9        | 268.3          | 268.3   | 215.0   | 279.8 | 283.3 | 283.3  | 182.4      |     |
| 1981 B  | 222.8  | 141.6           | 228.1  | 299.0  | 176.5       | 174.7           | 160.7        | 274.6          | 274.6   | 220.0   | 281.6 | 285.2 | 285.2  | 182.0      |     |
| 1981 V  | 224.3  | 141.9           | 228.4  | 302.7  | 176.3       | 175.8           | 163.3        | 277.6          | 277.6   | 222.0   | 284.4 | 290.2 | 290.2  | 183.0      |     |
| 1981 T  | 227.5  | 144.0           | 231.8  | 311.3  | 182.8       | 179.0           | 166.6        | 277.8          | 277.8   | 225.0   | 306.8 | 296.5 | 296.5  | 183.5      |     |
| 1982 J  | 227.1  | 143.4           | 232.6  | 312.5  | 182.8       | 178.9           | 167.4        | 275.7          | 280.9   | 225.0   | 309.8 | 300.0 | 300.0  | 184.2      |     |
| 1982 K  | ...  | 142.8           | 238.1  | 313.7  | 182.4       | 179.0           | 166.6        | ...            | ...   | 226.0   | 314.7 | 307.6 | 307.6  | 183.9      |     |
|         | RATE OF INCREASE OVER ONE MONTH (IRELAND 3 MONTHS) (T/T-1) |                 |        |        |             |                 |              |                | TAUX DE CROISSANCE SUR UN MOIS (IRLANDE 3 MOIS) |         |       |       |        |            |     |
| 81F/81J | 0.6  | 0.8             | 0.9    | 0.6    | 0.2         | 1.3             | 0.9          | 0.1            | 4.4   | 0.5     | 2.2   | 0.8   | 0.8    | 0.6        |     |
| 81K/81F | 0.8  | 1.2             | 0.6    | 1.4    | 0.5         | 1.2             | 1.0          | 0.3            | 2.0   | 0.9     | 2.5   | 2.5   | 2.5    | 0.6        |     |
| 81A/81K | 3.3  | 0.1             | 2.1    | 1.7    | 0.1         | -0.1            | 0.3          | 8.1            | 0.5   | 1.4     | 1.8   | 1.8   | 1.8    | 0.8        |     |
| 81J/81A | 0.9  | 0.0             | 0.2    | 1.9    | 0.4         | -0.1            | 0.5          | 1.4            | 5.5   | 3.5     | 1.9   | 0.6   | 0.6    | 1.3        |     |
| 81U/81J | 1.3  | 0.3             | 1.1    | 2.8    | 0.1         | 1.1             | 0.3          | 1.2            | 1.4   | 0.5     | 0.5   | 0.3   | 0.3    | 1.3        |     |
| 81S/81U | 2.3  | 1.2             | 5.6    | 1.5    | 4.7         | 1.7             | 1.4          | 0.6            | 0.9   | 1.1     | 1.6   | 1.6   | 1.6    | 1.6        |     |
| 81D/81S | 0.7  | 1.5             | 0.7    | 0.5    | 0.2         | 0.5             | 1.1          | 0.6            | 6.0   | 0.5     | 0.1   | 0.3   | 0.3    | 0.9        |     |
| 81O/81D | 0.4  | 0.6             | 0.3    | 0.4    | 0.5         | 1.2             | 0.3          | 0.6            | 1.2   | 0.0     | 1.7   | 0.4   | 0.4    | 1.3        |     |
| 81N/81O | 1.4  | 0.1             | 1.4    | 2.2    | 0.3         | -0.1            | -1.5         | 2.2            | -0.9  | 0.5     | 0.6   | 0.6   | 0.6    | 0.2        |     |
| 81B/81N | 1.3  | 0.6             | 0.3    | 1.5    | 0.3         | 1.5             | 0.5          | 2.5            | 6.3   | 3.3     | 0.7   | 0.7   | 0.7    | 0.2        |     |
| 81V/81B | 0.7  | 0.2             | 0.1    | 1.2    | -0.1        | 0.6             | 1.1          | 1.1            | 0.9   | 1.0     | 1.7   | 1.7   | 1.7    | 0.6        |     |
| 82J/81V | 1.4  | 1.5             | 1.5    | 2.8    | 3.7         | 1.8             | 2.0          | 0.1            | 1.4   | 7.9     | 2.2   | 2.2   | 2.2    | 0.3        |     |
| 82F/82J | -0.1   | -0.4            | 0.3    | 0.4    | 0.0         | -0.1            | -0.5         | -0.8           | 1.3   | 0.0     | 1.0   | 1.2   | 1.2    | 0.4        |     |
| 82K/82F | ...  | -0.4            | 2.4    | 0.4    | -0.2        | 0.1             | -0.5         | ...            | ...   | 0.4     | 1.6   | 2.6   | 2.6    | 0.2        |     |
|         | RATE OF INCREASE OVER 12 MONTHS (T/T-12)                   |                 |        |        |             |                 |              |                | TAUX DE CROISSANCE SUR 12 MOIS                  |         |       |       |        |            |     |
| 81/80F  | 16.1   | 6.4             | 16.0   | 20.4   | 13.4        | 10.0            | 9.2          | 21.2           | 28.0  | 13.9    | 33.8  | 17.0  | 17.0   | 12.1       |     |
| 81/80K  | 16.2   | 7.2             | 15.2   | 21.8   | 13.5        | 11.0            | 9.8          | 20.3           | 14.9  | 33.6    | 19.3  | 19.3  | 19.3   | 11.0       |     |
| 81/80A  | 16.0   | 6.9             | 15.5   | 20.5   | 13.3        | 9.8             | 9.1          | 20.4           | 14.8  | 34.5    | 19.7  | 19.7  | 19.7   | 10.4       |     |
| 81/80M  | 15.7   | 5.7             | 14.6   | 22.0   | 12.7        | 9.1             | 8.7          | 20.0           | 14.8  | 36.2    | 19.4  | 19.4  | 19.4   | 10.2       |     |
| 81/80J  | 16.2   | 6.3             | 15.4   | 24.8   | 13.1        | 10.3            | 8.5          | 18.6           | 16.5  | 28.4    | 17.4  | 17.4  | 17.4   | 9.6        |     |
| 81/80U  | 16.5   | 7.3             | 20.1   | 21.0   | 11.9        | 11.2            | 9.6          | 17.9           | 15.1  | 23.4    | 17.5  | 17.5  | 17.5   | 12.0       |     |
| 81/80S  | 16.7   | 9.2             | 20.1   | 19.4   | 12.3        | 12.0            | 11.0         | 17.9           | 16.2  | 21.9    | 17.5  | 17.5  | 17.5   | 12.8       |     |
| 81/80V  | 16.4   | 9.7             | 19.7   | 19.3   | 12.3        | 12.8            | 14.1         | 17.1           | 16.5  | 22.2    | 17.5  | 17.5  | 17.5   | 13.4       |     |
| 81/80O  | 16.2   | 9.1             | 19.1   | 18.6   | 12.5        | 9.6             | 12.1         | 17.9           | 13.9  | 21.4    | 17.6  | 17.6  | 17.6   | 12.2       |     |
| 81/80N  | 16.6   | 8.7             | 19.4   | 19.4   | 12.6        | 9.3             | 11.1         | 18.7           | 15.2  | 19.6    | 17.8  | 17.8  | 17.8   | 10.8       |     |
| 81/80D  | 16.3   | 7.7             | 17.1   | 20.6   | 12.2        | 9.7             | 10.6         | 19.4           | 15.0  | 20.4    | 17.8  | 17.8  | 17.8   | 10.3       |     |
| 82/81J  | 16.2   | 8.4             | 15.8   | 20.2   | 11.3        | 11.2            | 10.6         | 19.7           | 14.8  | 21.3    | 14.3  | 14.3  | 14.3   | 9.7        |     |
| 82/81F  | 15.4   | 7.1             | 15.1   | 20.0   | 11.1        | 9.7             | 10.2         | 18.7           | 14.2  | 19.9    | 14.8  | 14.8  | 14.8   | 9.4        |     |
| 82/81K  | ...  | 5.4             | 17.1   | 18.7   | 10.3        | 8.4             | 8.6          | ...            | ...   | 12.4    | 20.7  | 14.9  | 14.9   | 8.5        |     |

CO



CONSUMER PRICES  
HOUSEHOLD GOODS AND SERVICES

F

PRIX A LA CONSOMMATION  
BIENS ET SERVICES DE MENAGE

|         | EUR9   | BR<br>DEUTSCH<br>LAND | FRANCE | ITALIA | NEDER-<br>LAND | BELGIQUE<br>BELGIE | LUXEM-<br>BOURG | UNITED<br>KINGDOM | IRELAND   | DANMARK | ELLAS | EUR10 | ESPAÑA | PORTU-<br>GAL | USA |
|---------|--|-----------------------|--------|--------|----------------|--------------------|-----------------|-------------------|---|---------|-------|-------|--------|---------------|-----|
|         | PRICE INDICES  |                       |        |        |                |                    |                 |                   | INDICES DE PRIX                                 |         |       |       |        |               |     |
|         | 1975 = 100   |                       |        |        |                |                    |                 |                   |   |         |       |       |        |               |     |
| 1977    | 115.7  | 106.2                 | 112.9  | 135.4  | 111.3          | 112.3              | 108.3           | 131.5             | 129.6   | 118.0   | 121.7 | 145.2 | 131.1  | 105.9         |     |
| 1978    | 123.9  | 110.1                 | 122.5  | 149.3  | 114.5          | 117.0              | 112.5           | 145.9             | 143.4   | 131.0   | 132.1 | 180.6 | 155.8  | 112.4         |     |
| 1979    | 133.7  | 113.7                 | 135.2  | 168.3  | 117.6          | 121.7              | 118.1           | 164.2             | 157.8   | 139.7   | 148.8 | 216.0 | 171.8  | 120.4         |     |
| 1980    | 148.7  | 120.5                 | 152.3  | 203.1  | 124.5          | 126.4              | 125.8           | 188.1             | 185.9   | 154.9   | 185.9 | 251.1 | 212.1  | 129.9         |     |
| 1981    | 162.5  | 127.9                 | 170.4  | 241.5  | 131.0          | 131.8              | 134.2           | 199.6             | 220.3   | 172.6   | 228.0 | 281.4 | 249.4  | 140.0         |     |
| 1981 F  | 157.7  | 125.1                 | 163.2  | 229.6  | 129.9          | 130.4              | 131.2           | 196.4             | 208.4   | 163.0   | 204.8 | 269.6 | 238.1  | 135.9         |     |
| 1981 M  | 158.8  | 125.9                 | 164.9  | 231.4  | 130.5          | 131.0              | 132.1           | 197.1             | 208.4   | 167.0   | 219.6 | 272.5 | 239.3  | 137.2         |     |
| 1981 J  | 160.1  | 126.6                 | 166.5  | 233.5  | 131.2          | 131.0              | 132.8           | 198.8             | 216.7   | 170.0   | 223.0 | 276.1 | 242.3  | 138.6         |     |
| 1981 A  | 161.5  | 127.4                 | 167.9  | 240.2  | 131.7          | 131.2              | 133.7           | 199.3             | 216.7   | 172.0   | 226.3 | 278.3 | 244.6  | 139.2         |     |
| 1981 J  | 162.2  | 127.7                 | 169.4  | 241.6  | 131.9          | 131.5              | 133.9           | 199.3             | 216.7   | 173.0   | 228.5 | 279.5 | 246.5  | 139.8         |     |
| 1981 J  | 163.0  | 128.4                 | 171.0  | 242.4  | 132.2          | 131.7              | 134.8           | 199.2             | 216.7   | 173.0   | 230.0 | 282.0 | 250.3  | 140.7         |     |
| 1981 A  | 163.9  | 128.8                 | 172.3  | 245.3  | 131.7          | 131.7              | 135.2           | 200.6             | 224.0   | 175.0   | 221.5 | 286.7 | 251.4  | 141.0         |     |
| 1981 S  | 165.2  | 129.4                 | 174.3  | 247.3  | 132.3          | 132.2              | 135.9           | 202.1             | 224.0   | 177.0   | 238.1 | 286.8 | 255.1  | 142.0         |     |
| 1981 O  | 166.2  | 130.0                 | 176.1  | 249.4  | 133.1          | 132.9              | 136.4           | 202.2             | 224.0   | 179.0   | 242.0 | 290.4 | 259.0  | 142.7         |     |
| 1981 N  | 167.9  | 130.7                 | 177.9  | 256.9  | 133.6          | 133.9              | 136.7           | 203.1             | 232.0   | 179.0   | 246.8 | 293.3 | 263.7  | 143.7         |     |
| 1981 D  | 168.6  | 131.0                 | 179.4  | 258.2  | 134.0          | 134.9              | 137.1           | 203.0             | 232.0   | 181.0   | 251.2 | 295.4 | 268.3  | 144.0         |     |
| 1982 J  | 169.4  | 131.6                 | 181.2  | 259.2  | 134.3          | 135.7              | 137.8           | 202.6             | 232.0   | 182.0   | 252.0 | 302.4 | 271.0  | 144.5         |     |
| 1982 F  | 171.3  | 132.6                 | 183.4  | 266.4  | 135.0          | 136.3              | 139.3           | 204.1             | 237.4   | 183.0   | 247.8 | 305.0 | 274.9  | 145.6         |     |
| 1982 M  | ..   | 133.0                 | 185.6  | 267.6  | 135.7          | 136.4              | 140.5           | ..                | ..  | 185.0   | 264.5 | 310.1 | 280.6  | 146.5         |     |
|         | RATE OF INCREASE OVER ONE MONTH (IRELAND 3 MONTHS) (T/T-1) |                       |        |        |                |                    |                 |                   | TAUX DE CROISSANCE SUR UN MOIS (IRLANDE 3 MOIS) |         |       |       |        |               |     |
| 81F/81J | 1.2  | 0.6                   | 0.9    | 3.1    | 0.5            | 0.5                | 0.7             | 1.4               | 5.0   | 0.6     | 0.2   | 1.1   | 1.2    | 1.1           |     |
| 81M/81F | 0.7  | 0.6                   | 1.0    | 0.8    | 0.5            | 0.5                | 0.7             | 0.4               | ..  | 2.5     | 7.2   | 1.1   | 0.5    | 0.9           |     |
| 81A/81M | 0.8  | 0.6                   | 1.0    | 0.9    | 0.5            | 0.0                | 0.5             | 1.8               | ..  | 1.8     | 1.5   | 1.3   | 1.1    | 1.1           |     |
| 81M/81A | 0.9  | 0.6                   | 0.8    | 2.9    | 0.4            | 0.2                | 0.7             | 0.3               | 4.0   | 1.2     | 1.5   | 0.8   | 0.9    | 0.4           |     |
| 81J/81M | 0.4  | 0.2                   | 0.9    | 0.6    | 0.2            | 0.2                | 0.1             | 0.0               | ..  | 0.6     | 1.0   | 0.5   | 0.8    | 0.5           |     |
| 81J/81J | 0.5  | 0.5                   | 0.9    | 0.3    | 0.2            | 0.2                | 0.7             | -0.1              | ..  | 0.7     | 0.0   | 0.9   | 1.5    | 0.6           |     |
| 81A/81J | 0.6  | 0.3                   | 0.8    | 1.2    | -0.4           | 0.0                | 0.3             | 0.7               | 3.4   | 1.2     | -3.7  | 1.7   | 0.4    | 0.2           |     |
| 81S/81A | 0.8  | 0.5                   | 1.2    | 0.8    | 0.5            | 0.4                | 0.5             | 0.7               | ..  | 1.1     | 7.5   | 0.0   | 1.5    | 0.7           |     |
| 81O/81S | 0.6  | 0.5                   | 1.0    | 0.8    | 0.6            | 0.5                | 0.4             | 0.0               | ..  | 1.1     | 1.6   | 1.3   | 1.5    | 0.5           |     |
| 81N/81O | 1.0  | 0.5                   | 1.0    | 3.0    | 0.4            | 0.8                | 0.2             | 0.4               | 3.6   | 0.0     | 2.0   | 1.0   | 1.8    | 0.7           |     |
| 81D/81N | 0.4  | 0.5                   | 0.8    | 0.5    | 0.3            | 0.7                | 0.5             | -0.0              | ..  | 1.1     | 1.8   | 0.7   | 1.7    | 0.2           |     |
| 82J/81D | 0.5  | 0.5                   | 1.0    | 0.4    | 0.2            | 0.6                | 0.5             | -0.2              | ..  | 0.6     | 0.3   | 2.4   | 1.0    | 0.3           |     |
| 82F/82J | 1.1  | 0.8                   | 1.2    | 2.8    | 0.5            | 0.4                | 1.1             | 0.7               | 2.3   | 0.5     | -1.7  | 0.9   | 1.4    | 0.8           |     |
| 82M/82F | ..   | 0.3                   | 1.2    | 0.5    | 0.5            | 0.1                | 0.9             | ..                | ..  | 1.1     | 6.7   | 1.7   | 2.1    | 0.6           |     |
|         | RATE OF INCREASE OVER 12 MONTHS (T/T-12)                   |                       |        |        |                |                    |                 |                   | TAUX DE CROISSANCE SUR 12 MOIS                  |         |       |       |        |               |     |
| 81/80F  | 10.0   | 6.1                   | 12.5   | 20.1   | 6.6            | 4.7                | 6.9             | 7.9               | 21.7  | 8.7     | 22.9  | 12.8  | 24.3   | 8.0           |     |
| 81/80M  | 9.8  | 6.2                   | 12.6   | 20.0   | 6.6            | 4.9                | 6.9             | 6.8               | ..  | 10.6    | 27.5  | 12.6  | 23.4   | 7.7           |     |
| 81/80A  | 9.7  | 6.3                   | 12.1   | 20.1   | 6.2            | 4.9                | 7.0             | 6.8               | ..  | 11.8    | 23.9  | 12.5  | 22.6   | 8.0           |     |
| 81/80M  | 9.6  | 6.3                   | 11.9   | 19.2   | 6.2            | 4.5                | 7.2             | 6.4               | 18.0  | 13.2    | 22.0  | 12.1  | 19.3   | 7.8           |     |
| 81/80J  | 9.4  | 6.3                   | 11.6   | 19.1   | 6.2            | 4.2                | 7.1             | 6.1               | ..  | 13.1    | 21.2  | 11.3  | 17.2   | 7.6           |     |
| 81/80J  | 9.1  | 6.3                   | 11.4   | 18.9   | 5.8            | 3.9                | 7.0             | 5.6               | ..  | 10.9    | 21.4  | 11.3  | 17.1   | 7.4           |     |
| 81/80A  | 9.0  | 6.0                   | 11.5   | 18.5   | 5.5            | 3.8                | 6.5             | 5.6               | 17.8  | 11.5    | 23.1  | 12.7  | 16.3   | 6.9           |     |
| 81/80S  | 9.0  | 5.9                   | 11.8   | 18.3   | 5.0            | 3.8                | 6.6             | 5.6               | ..  | 11.3    | 22.8  | 11.6  | 17.1   | 7.2           |     |
| 81/80O  | 8.9  | 6.0                   | 11.7   | 18.3   | 5.1            | 4.2                | 6.1             | 4.9               | ..  | 11.9    | 20.7  | 11.7  | 16.6   | 6.9           |     |
| 81/80N  | 8.8  | 6.1                   | 11.7   | 16.8   | 5.0            | 4.4                | 5.6             | 4.7               | 16.9  | 11.2    | 20.4  | 11.4  | 17.2   | 7.7           |     |
| 81/80D  | 8.8  | 6.2                   | 11.6   | 16.9   | 5.2            | 4.6                | 5.7             | 4.5               | ..  | 11.2    | 21.8  | 11.4  | 16.1   | 7.6           |     |
| 82/81J  | 8.7  | 5.9                   | 12.1   | 16.4   | 3.9            | 4.6                | 5.8             | 4.6               | ..  | 12.3    | 23.3  | 13.4  | 15.2   | 7.4           |     |
| 82/81F  | 8.6  | 6.0                   | 12.4   | 16.0   | 3.9            | 4.5                | 6.2             | 3.9               | 13.9  | 12.3    | 21.0  | 13.2  | 15.5   | 7.1           |     |
| 82/81M  | ..   | 5.6                   | 12.6   | 15.6   | 4.0            | 4.1                | 6.4             | ..                | ..  | 10.8    | 20.4  | 13.8  | 17.3   | 6.8           |     |

CONSUMER PRICES

TRANSPORT AND COMMUNICATIONS

G

PRIX A LA CONSOMMATION

TRANSPORTS ET COMMUNICATIONS

|         | EUR9   | BR<br>DEUTSCH<br>LAND | FRANCE | ITALIA | NEDER-<br>LAND | BELGIQUE<br>BELGIE | LUXEM-<br>BOURG | UNITED<br>KINGDOM | IRELAND         | DANMARK | ELLAS | EUR10 | ESPANA | PORTU-<br>GAL | USA |
|---------|--|-----------------------|--------|--------|----------------|--------------------|-----------------|-------------------|-----------------|---------|-------|-------|--------|---------------|-----|
|         | PRICE INDICES  |                       |        |        |                |                    |                 | 1975 = 100        | INDICES DE PRIX |         |       |       |        |               |     |
| 1977    | 124.2  | 106.5                 | 121.9  | 152.2  | 113.7          | 116.7              | 115.7           | 131.4             | 140.1           | 116.0   | 119.9 | 149.6 | 182.7  | 117.7         |     |
| 1978    | 133.3  | 109.6                 | 134.0  | 165.4  | 116.5          | 122.6              | 119.3           | 142.8             | 149.5           | 127.0   | 127.4 | 174.9 | 221.1  | 123.2         |     |
| 1979    | 149.0  | 114.7                 | 151.6  | 191.0  | 122.2          | 129.8              | 125.9           | 165.6             | 171.0           | 141.0   | 158.7 | 204.2 | 263.3  | 140.8         |     |
| 1980    | 172.9  | 122.0                 | 174.8  | 237.6  | 132.2          | 143.9              | 137.7           | 197.9             | 209.6           | 162.3   | 194.6 | 253.4 | 334.3  | 165.8         |     |
| 1981    | 195.1  | 130.6                 | 198.2  | 281.0  | 143.7          | 156.6              | 149.9           | 222.8             | 260.2           | 183.0   | 221.1 | 295.9 | 419.6  | 185.9         |     |
| 1981 F  | 185.7  | 125.7                 | 188.6  | 267.0  | 138.6          | 152.4              | 144.8           | 210.6             | 233.1           | 172.0   | 212.6 | 272.4 | 395.3  | 179.9         |     |
| 1981 M  | 188.8  | 126.7                 | 189.7  | 270.4  | 140.1          | 152.7              | 146.9           | 218.6             | 238.1           | 177.0   | 213.0 | 285.6 | 395.3  | 181.6         |     |
| 1981 A  | 190.7  | 128.6                 | 192.1  | 272.7  | 140.2          | 152.8              | 147.6           | 220.2             | 247.7           | 179.0   | 219.8 | 290.4 | 396.8  | 182.8         |     |
| 1981 J  | 192.3  | 130.0                 | 193.2  | 276.7  | 141.4          | 153.5              | 148.5           | 220.8             | 247.7           | 184.0   | 221.1 | 294.7 | 396.8  | 184.5         |     |
| 1981 J  | 194.0  | 131.2                 | 195.7  | 278.4  | 142.9          | 155.5              | 149.6           | 222.4             | 247.7           | 185.0   | 221.6 | 299.8 | 396.8  | 185.9         |     |
| 1981 J  | 196.3  | 132.3                 | 198.9  | 280.1  | 145.2          | 159.5              | 149.9           | 224.3             | 247.7           | 188.0   | 222.4 | 302.7 | 416.4  | 187.6         |     |
| 1981 A  | 199.8  | 133.4                 | 202.8  | 286.3  | 146.7          | 161.2              | 152.5           | 229.7             | 271.4           | 188.0   | 223.7 | 303.9 | 416.4  | 188.4         |     |
| 1981 S  | 200.8  | 134.4                 | 205.6  | 287.5  | 147.8          | 161.0              | 155.2           | 229.1             | 271.4           | 188.0   | 224.5 | 304.7 | 449.5  | 189.4         |     |
| 1981 O  | 201.2  | 133.8                 | 206.6  | 291.1  | 148.7          | 160.2              | 152.7           | 227.6             | 271.4           | 188.0   | 226.7 | 306.4 | 455.1  | 190.7         |     |
| 1981 N  | 203.7  | 133.2                 | 208.7  | 299.2  | 148.0          | 160.4              | 153.1           | 231.3             | 271.4           | 188.0   | 227.9 | 307.4 | 455.1  | 192.0         |     |
| 1981 D  | 204.2  | 133.3                 | 209.7  | 301.3  | 147.3          | 160.0              | 154.3           | 231.3             | 271.4           | 189.0   | 227.9 | 311.8 | 466.8  | 192.4         |     |
| 1982 J  | 205.9  | 133.6                 | 213.1  | 302.7  | 146.8          | 160.3              | 160.9           | 230.5             | 271.4           | 192.0   | 245.9 | 315.6 | 506.6  | 192.5         |     |
| 1982 F  | 205.9  | 133.3                 | 214.7  | 308.5  | 146.7          | 161.7              | 161.5           | 227.9             | 271.4           | 192.0   | 246.5 | 318.2 | 510.4  | 191.2         |     |
| 1982 M  | 205.9  | 132.6                 | 216.5  | 310.6  | 145.7          | 163.1              | 162.2           | 227.9             | 271.4           | 196.0   | 248.8 | 330.0 | 510.9  | 189.3         |     |
|         | RATE OF INCREASE OVER ONE MONTH (IRELAND 3 MONTHS) (T/T-1) TAUX DE GROISSANCE SUR UN MOIS (IRLANDE 3 MOIS) |                       |        |        |                |                    |                 |                   |                 |         |       |       |        |               |     |
| 81F/81J | 1.3  | 0.8                   | 1.1    | 2.0    | 0.7            | 1.4                | 0.8             | 1.4               | 6.6             | 1.8     | 2.5   | 0.4   | 0.0    | 2.3           |     |
| 81M/81F | 1.7  | 0.8                   | 0.6    | 1.3    | 1.1            | 0.2                | 1.5             | 3.8               | 6.6             | 2.9     | 0.2   | 4.8   | 0.0    | 1.0           |     |
| 81A/81M | 1.0  | 1.5                   | 1.3    | 0.9    | 0.1            | 0.1                | 0.5             | 0.7               | 6.3             | 1.1     | 3.2   | 1.7   | 0.4    | 0.7           |     |
| 81J/81A | 0.8  | 1.1                   | 0.6    | 1.5    | 0.9            | 0.5                | 0.6             | 0.3               | 6.3             | 2.8     | 0.6   | 1.5   | 0.0    | 0.9           |     |
| 81M/81J | 0.9  | 0.9                   | 1.3    | 0.6    | 1.1            | 1.3                | 0.7             | 0.7               | 6.3             | 0.5     | 0.2   | 1.7   | 0.0    | 0.8           |     |
| 81J/81M | 1.1  | 0.8                   | 1.6    | 0.6    | 1.6            | 2.6                | 0.9             | 0.9               | 9.6             | 1.6     | 0.4   | 1.0   | 4.9    | 1.0           |     |
| 81A/81J | 1.8  | 0.8                   | 2.0    | 2.2    | 1.0            | 1.1                | 1.7             | 2.4               | 9.6             | 0.0     | 0.6   | 0.4   | 0.0    | 0.4           |     |
| 81S/81A | 0.5  | 0.7                   | 1.4    | 0.4    | 0.7            | -0.1               | 1.8             | -0.3              | 9.6             | 0.0     | 0.3   | 0.3   | 7.9    | 0.5           |     |
| 81O/81S | 0.2  | -0.4                  | 0.5    | 1.3    | 0.6            | -0.5               | -1.6            | -0.7              | 6.4             | 0.0     | 1.0   | 0.6   | 1.2    | 0.7           |     |
| 81N/81O | 1.2  | -0.4                  | 1.0    | 2.8    | -0.5           | -0.1               | 0.3             | 1.6               | 6.4             | 0.5     | 0.3   | 0.3   | 0.0    | 0.7           |     |
| 81D/81N | 0.3  | 0.1                   | 0.5    | 0.7    | -0.5           | -0.2               | 0.8             | 0.0               | 6.4             | 0.0     | 2.5   | 1.5   | 2.6    | 0.2           |     |
| 82J/81D | 0.5  | 0.2                   | 1.6    | 0.5    | -0.3           | 0.2                | 4.3             | -0.3              | 3.0             | 1.6     | 5.6   | 1.2   | 8.5    | 0.0           |     |
| 82F/82J | 0.3  | -0.2                  | 0.8    | 1.9    | -0.1           | 0.9                | 0.4             | -1.1              | 3.0             | 0.5     | 0.2   | 0.8   | 0.8    | -0.7          |     |
| 82M/82F | 0.3  | -0.5                  | 0.8    | 0.7    | -0.7           | 0.9                | 0.4             | 0.9               | 3.0             | 1.6     | 0.9   | 3.9   | 0.1    | -1.0          |     |
|         | RATE OF INCREASE OVER 12 MONTHS (T/T-12) TAUX DE GROISSANCE SUR 12 MOIS                                    |                       |        |        |                |                    |                 |                   |                 |         |       |       |        |               |     |
| 81/80F  | 12.3   | 5.6                   | 13.3   | 18.9   | 7.4            | 7.7                | 7.2             | 11.8              | 21.5            | 11.7    | 16.5  | 13.7  | 19.5   | 13.1          |     |
| 81/80M  | 12.6   | 4.6                   | 12.2   | 19.1   | 7.8            | 7.7                | 8.1             | 14.6              | 21.5            | 12.0    | 15.5  | 18.8  | 19.5   | 12.2          |     |
| 81/80A  | 11.7   | 5.2                   | 12.3   | 18.2   | 6.9            | 7.8                | 7.8             | 11.7              | 17.7            | 11.2    | 16.3  | 20.5  | 20.0   | 11.5          |     |
| 81/80M  | 11.8   | 6.0                   | 11.9   | 18.5   | 6.6            | 7.9                | 7.5             | 11.2              | 17.7            | 13.6    | 15.7  | 19.3  | 20.0   | 11.6          |     |
| 81/80J  | 12.0   | 6.8                   | 12.9   | 17.7   | 7.8            | 8.7                | 9.2             | 11.0              | 17.7            | 14.9    | 12.3  | 18.3  | 20.0   | 12.1          |     |
| 81/80J  | 11.9   | 7.5                   | 12.0   | 15.7   | 9.3            | 9.8                | 8.2             | 11.6              | 24.8            | 13.9    | 11.8  | 16.7  | 24.4   | 12.6          |     |
| 81/80A  | 13.6   | 8.2                   | 13.6   | 17.9   | 10.4           | 11.6               | 10.3            | 14.0              | 24.8            | 13.3    | 11.7  | 16.2  | 24.4   | 12.3          |     |
| 81/80S  | 14.0   | 9.4                   | 14.7   | 17.7   | 11.4           | 11.3               | 12.3            | 14.1              | 24.8            | 13.3    | 11.6  | 16.2  | 34.3   | 12.0          |     |
| 81/80O  | 14.3   | 9.0                   | 14.5   | 21.1   | 11.0           | 9.5                | 10.1            | 12.9              | 32.1            | 13.5    | 11.6  | 16.6  | 36.0   | 12.1          |     |
| 81/80N  | 14.1   | 8.4                   | 15.0   | 20.4   | 9.7            | 8.1                | 9.1             | 13.1              | 32.1            | 12.5    | 11.7  | 16.3  | 36.0   | 11.6          |     |
| 81/80D  | 12.5   | 7.7                   | 14.1   | 16.4   | 8.5            | 7.0                | 8.7             | 11.9              | 32.1            | 11.8    | 13.3  | 15.4  | 31.8   | 11.0          |     |
| 82/81J  | 12.0   | 7.1                   | 14.2   | 15.7   | 6.6            | 6.7                | 12.0            | 11.0              | 27.7            | 13.6    | 18.6  | 16.3  | 28.2   | 9.5           |     |
| 82/81F  | 10.9   | 6.0                   | 13.8   | 15.5   | 5.8            | 6.1                | 11.5            | 8.2               | 27.7            | 12.2    | 15.9  | 16.8  | 29.1   | 6.3           |     |
| 82/81M  | 0.3  | 4.7                   | 14.1   | 14.9   | 4.0            | 6.8                | 10.4            | 0.3               | 27.7            | 10.7    | 16.8  | 15.8  | 29.2   | 4.2           |     |

CONSUMER PRICES  
RECREATION AND EDUCATION, ETC

H

PRIX A LA CONSOMMATION  
LOISIRS, SPECTACLES ENSEIGNEMENTS ETC

|         | EUR9   | BR<br>DEUTSCH<br>LAND | FRANCE | ITALIA | NEDER-<br>LAND | BELGIQUE<br>BELGIE | LUXEM-<br>BOURG | UNITED<br>KINGDOM | IRELAND    | DANMARK         | ELLAS | EUR10 | ESPANA | PORTU-<br>GAL | USA |  |
|---------|--|-----------------------|--------|--------|----------------|--------------------|-----------------|-------------------|------------|-----------------|-------|-------|--------|---------------|-----|--|
|         | PRICE INDICES  |                       |        |        |                |                    |                 |                   | 1975 = 100 | INDICES DE PRIX |       |       |        |               |     |  |
| 1977 Q  | 116.7  | 107.1                 | 114.2  | 128.3  | 108.1          | 110.5              | 116.5           | 127.8             | 135.5      | 115.0           | 133.6 | ..    | 151.6  | 129.2         | ..  |  |
| 1978 Q  | 124.1  | 108.9                 | 123.8  | 141.1  | 111.5          | 114.6              | 119.5           | 139.3             | 150.6      | 128.0           | 153.6 | ..    | 178.6  | 147.9         | ..  |  |
| 1979 Q  | 133.1  | 110.1                 | 133.7  | 159.7  | 113.7          | 117.4              | 124.9           | 155.1             | 168.7      | 138.5           | 176.1 | ..    | 206.6  | 173.4         | ..  |  |
| 1980 Q  | 146.7  | 113.0                 | 146.6  | 189.5  | 117.6          | 120.7              | 133.5           | 179.1             | 195.4      | 150.0           | 201.7 | ..    | 231.1  | 203.2         | ..  |  |
| 1981 Q  | 160.5  | 117.8                 | 161.8  | 228.1  | 122.5          | 126.0              | 143.6           | 196.0             | 231.8      | 165.3           | 265.2 | ..    | 264.0  | 233.2         | ..  |  |
| 1981 F  | 156.5  | 117.3                 | 154.9  | 219.8  | 120.0          | 124.1              | 140.5           | 191.3             | 215.3      | 158.0           | 247.5 | ..    | 251.7  | 224.4         | ..  |  |
| 1981 M  | 157.3  | 117.7                 | 156.3  | 221.2  | 120.6          | 124.5              | 141.0           | 191.7             | 216.0      | 160.0           | 250.0 | ..    | 253.2  | 225.8         | ..  |  |
| 1981 A  | 158.1  | 117.2                 | 157.4  | 221.6  | 121.1          | 123.9              | 141.6           | 194.0             | 216.0      | 162.0           | 251.5 | ..    | 258.0  | 227.2         | ..  |  |
| 1981 J  | 159.1  | 117.7                 | 158.8  | 224.3  | 121.4          | 123.8              | 142.3           | 194.9             | 225.4      | 164.0           | 254.8 | ..    | 261.0  | 228.8         | ..  |  |
| 1981 J  | 159.2  | 117.3                 | 160.7  | 225.0  | 121.9          | 124.9              | 143.6           | 193.8             | 225.4      | 165.0           | 258.6 | ..    | 262.0  | 229.8         | ..  |  |
| 1981 A  | 160.2  | 116.8                 | 161.8  | 226.7  | 123.9          | 127.0              | 144.1           | 196.0             | 225.4      | 166.0           | 261.3 | ..    | 262.7  | 231.5         | ..  |  |
| 1981 S  | 160.6  | 116.3                 | 162.7  | 229.0  | 124.1          | 126.6              | 144.6           | 196.6             | 232.6      | 167.0           | 259.1 | ..    | 263.2  | 233.7         | ..  |  |
| 1981 O  | 162.3  | 117.2                 | 164.7  | 233.0  | 124.2          | 127.1              | 146.0           | 198.5             | 232.6      | 168.0           | 279.3 | ..    | 270.7  | 235.0         | ..  |  |
| 1981 N  | 163.8  | 118.5                 | 166.4  | 235.4  | 124.3          | 127.8              | 145.7           | 199.8             | 232.6      | 171.0           | 290.9 | ..    | 277.1  | 244.8         | ..  |  |
| 1981 D  | 165.3  | 119.9                 | 168.4  | 240.3  | 124.6          | 128.9              | 146.4           | 200.3             | 253.8      | 172.0           | 291.5 | ..    | 280.1  | 244.7         | ..  |  |
| 1981 J  | 167.4  | 120.7                 | 169.7  | 244.8  | 124.6          | 129.2              | 147.7           | 204.1             | 253.8      | 173.0           | 292.2 | ..    | 281.3  | 250.6         | ..  |  |
| 1982 F  | 169.5  | 123.1                 | 172.6  | 246.3  | 126.0          | 130.8              | 150.3           | 206.0             | 258.1      | 174.0           | 292.5 | ..    | 283.2  | 255.9         | ..  |  |
| 1982 J  | 170.8  | 123.6                 | 174.4  | 250.6  | 126.1          | 131.9              | 153.4           | 206.9             | 258.1      | 177.0           | 292.1 | ..    | 286.5  | 258.2         | ..  |  |
| 1982 M  | ..   | 123.8                 | 176.1  | 252.5  | 127.0          | 132.1              | 152.6           | ..                | 258.1      | 177.0           | 294.1 | ..    | 291.1  | 261.5         | ..  |  |
|         | RATE OF INCREASE OVER ONE MONTH (IRELAND 3 MONTHS) (T/T-1) TAUX DE CROISSANCE SUR UN MOIS (IRLANDE 3 MOIS) |                       |        |        |                |                    |                 |                   |            |                 |       |       |        |               |     |  |
| 81F/81J | 0.6  | 0.4                   | 0.6    | 2.0    | 0.2            | 0.4                | 0.3             | 0.3               | 3.3        | 0.6             | 0.7   | ..    | 2.0    | 0.5           | ..  |  |
| 81M/81F | 0.5  | 0.3                   | 0.9    | 0.2    | 0.5            | 0.3                | 0.4             | 0.2               | 3.3        | 1.3             | 1.0   | ..    | 0.6    | 0.6           | ..  |  |
| 81A/81M | 0.5  | -0.4                  | 0.7    | 0.2    | 0.4            | -0.5               | 0.4             | 1.2               | 4.7        | 1.3             | 0.6   | ..    | 1.9    | 0.6           | ..  |  |
| 81J/81A | 0.6  | 0.4                   | 0.9    | 1.2    | 0.2            | -0.1               | 0.5             | 0.5               | 4.7        | 1.2             | 1.3   | ..    | 1.2    | 0.7           | ..  |  |
| 81J/81J | 0.0  | -0.3                  | 1.2    | 0.6    | 0.4            | 0.9                | 0.9             | -0.6              | 4.7        | 0.6             | 1.5   | ..    | 0.4    | 0.4           | ..  |  |
| 81A/81J | 0.7  | -0.4                  | 0.7    | 0.8    | 1.6            | 0.3                | 0.3             | 1.1               | 3.2        | 0.6             | 1.0   | ..    | 0.3    | 0.7           | ..  |  |
| 81S/81A | 0.3  | -0.8                  | 0.6    | 1.0    | 0.2            | -0.3               | 0.3             | 0.3               | 3.2        | 0.6             | -0.8  | ..    | 0.2    | 1.0           | ..  |  |
| 81O/81S | 1.0  | 0.8                   | 1.2    | 1.7    | 0.4            | 1.0                | 1.0             | 1.0               | 3.2        | 0.6             | 7.8   | ..    | 2.8    | 0.6           | ..  |  |
| 81N/81O | 0.9  | 1.1                   | 1.0    | 1.0    | 0.1            | 0.6                | -0.2            | 0.7               | 9.1        | 1.8             | 4.1   | ..    | 2.4    | 4.2           | ..  |  |
| 81D/81N | 0.3  | 1.2                   | 1.2    | 2.1    | 0.2            | 0.9                | 0.5             | 0.3               | 9.1        | 0.6             | 0.2   | ..    | 1.1    | -0.0          | ..  |  |
| 81D/81D | 1.2  | 0.7                   | 0.8    | 1.9    | 0.0            | 0.2                | 0.9             | 1.9               | 9.1        | 0.6             | 0.2   | ..    | 0.5    | 2.4           | ..  |  |
| 82J/81D | 1.3  | 2.0                   | 1.7    | 0.6    | 1.1            | 1.2                | 1.8             | 0.9               | 1.7        | 0.6             | 0.1   | ..    | 0.7    | 2.1           | ..  |  |
| 82F/82J | 0.8  | 0.4                   | 1.0    | 0.6    | 0.1            | 0.8                | 2.1             | 0.4               | 1.7        | 0.6             | -0.1  | ..    | 1.2    | 0.9           | ..  |  |
| 82M/82F | ..   | 0.2                   | 1.0    | 0.8    | 0.7            | 0.2                | -0.5            | ..                | 1.7        | 0.0             | 0.7   | ..    | 1.6    | 1.3           | ..  |  |
|         | RATE OF INCREASE OVER 12 MONTHS (T/T-12) TAUX DE CROISSANCE SUR 12 MOIS                                    |                       |        |        |                |                    |                 |                   |            |                 |       |       |        |               |     |  |
| 81/80F  | 10.4   | 4.3                   | 10.3   | 24.0   | 3.2            | 4.4                | 7.9             | 11.4              | 17.2       | 9.7             | 29.4  | ..    | 12.9   | 17.1          | ..  |  |
| 81/80M  | 10.1   | 4.1                   | 10.2   | 22.9   | 3.2            | 4.6                | 7.7             | 11.1              | 17.2       | 10.3            | 29.8  | ..    | 13.0   | 14.3          | ..  |  |
| 81/80A  | 9.1  | 3.5                   | 10.0   | 20.8   | 3.2            | 4.1                | 7.4             | 9.2               | 17.3       | 11.0            | 27.1  | ..    | 14.4   | 13.5          | ..  |  |
| 81/80J  | 9.2  | 4.1                   | 10.0   | 21.2   | 3.5            | 3.6                | 7.3             | 9.1               | 17.3       | 10.1            | 25.9  | ..    | 14.8   | 14.1          | ..  |  |
| 81/80J  | 8.9  | 3.3                   | 10.6   | 20.9   | 3.9            | 4.3                | 8.1             | 8.0               | 17.3       | 10.7            | 23.2  | ..    | 14.7   | 12.9          | ..  |  |
| 81/80J  | 9.4  | 3.3                   | 10.5   | 21.2   | 3.9            | 4.6                | 7.9             | 8.9               | 17.3       | 10.7            | 20.4  | ..    | 14.7   | 13.8          | ..  |  |
| 81/80A  | 9.4  | 3.3                   | 10.4   | 21.2   | 3.9            | 4.5                | 7.8             | 9.1               | 17.9       | 9.9             | 19.8  | ..    | 14.5   | 13.0          | ..  |  |
| 81/80S  | 9.2  | 4.5                   | 10.8   | 17.8   | 4.8            | 4.3                | 8.6             | 9.0               | 17.9       | 9.8             | 21.3  | ..    | 14.6   | 13.0          | ..  |  |
| 81/80O  | 9.0  | 4.7                   | 10.8   | 17.8   | 4.8            | 4.2                | 7.1             | 8.3               | 17.9       | 9.6             | 22.8  | ..    | 15.2   | 15.1          | ..  |  |
| 81/80N  | 8.9  | 4.9                   | 11.1   | 17.3   | 4.0            | 4.4                | 6.6             | 7.6               | 21.8       | 10.3            | 21.7  | ..    | 15.2   | 15.3          | ..  |  |
| 81/80D  | 9.9  | 5.0                   | 11.3   | 17.3   | 4.3            | 5.2                | 7.0             | 9.4               | 21.8       | 10.9            | 21.5  | ..    | 14.9   | 17.4          | ..  |  |
| 82/81J  | 9.0  | 5.4                   | 12.2   | 14.3   | 5.8            | 5.8                | 7.3             | 8.0               | 19.9       | 10.8            | 19.1  | ..    | 14.8   | 14.7          | ..  |  |
| 82/81F  | 9.1  | 5.5                   | 12.6   | 14.0   | 5.1            | 6.3                | 9.2             | 8.2               | 19.9       | 12.0            | 18.0  | ..    | 13.8   | 15.1          | ..  |  |
| 82/81M  | ..   | 5.2                   | 12.7   | 14.2   | 5.3            | 6.1                | 8.2             | ..                | 19.9       | 10.6            | 17.6  | ..    | 15.0   | 15.8          | ..  |  |

CONSUMER PRICES  
OTHER GOODS AND SERVICES

PRIX A LA CONSOMMATION  
AUTRES BIENS ET SERVICES

|         | EUR9   | BR<br>DEUTSCH<br>LAND | FRANCE | ITALIA | HEDER-<br>LAND | BELGIQUE<br>BELGIE | LUXEM-<br>BOURG | UNITED<br>KINGDOM | IRELAND   | DANMARK | ELLAS | EUR10 | ESPAÑA | PORTU-<br>GAL | USA   |
|---------|--|-----------------------|--------|--------|----------------|--------------------|-----------------|-------------------|---|---------|-------|-------|--------|---------------|-------|
|         | PRICE INDICES 1975 = 100                                   |                       |        |        |                |                    |                 |                   | INDICES DE PRIX                                 |         |       |       |        |               |       |
| 1977    | 125.7  | 108.0                 | 119.8  | 136.6  | 118.6          | 121.6              | 120.0           | 138.7             | 138.8   | 122.0   | 128.4 | ..    | 161.2  | 124.2         | 117.3 |
| 1978    | 137.3  | 112.1                 | 131.8  | 155.5  | 124.7          | 129.6              | 127.5           | 152.5             | 151.6   | 138.0   | 154.8 | ..    | 193.4  | 167.4         | 127.6 |
| 1979    | 153.8  | 117.7                 | 148.6  | 184.0  | 134.5          | 132.9              | 135.9           | 174.2             | 172.7   | 150.8   | 199.9 | ..    | 239.1  | 189.2         | 142.5 |
| 1980    | 182.3  | 124.8                 | 176.8  | 239.1  | 145.9          | 137.8              | 141.8           | 211.4             | 210.7   | 168.4   | 275.3 | ..    | 292.6  | 214.1         | 165.9 |
| 1981    | 207.1  | 132.2                 | 203.6  | 290.3  | 154.9          | 145.2              | 153.0           | 238.1             | 262.4   | 184.4   | 343.4 | ..    | 338.3  | 255.3         | 188.7 |
| 1981    | 197.5  | 129.5                 | 192.8  | 273.1  | 149.2          | 141.9              | 146.9           | 227.0             | 244.8   | 176.0   | 328.1 | ..    | 315.4  | 238.8         | 178.5 |
| 1981    | 201.1  | 130.0                 | 195.1  | 278.3  | 149.4          | 143.5              | 149.1           | 234.3             | 244.8   | 179.0   | 329.8 | ..    | 320.1  | 242.6         | 180.0 |
| 1981    | 203.6  | 130.3                 | 198.4  | 282.7  | 149.4          | 144.0              | 151.0           | 236.5             | 244.8   | 180.0   | 358.4 | ..    | 329.5  | 248.4         | 182.0 |
| 1981    | 205.3  | 130.6                 | 200.8  | 287.4  | 155.2          | 144.1              | 151.3           | 237.3             | 251.5   | 183.0   | 332.8 | ..    | 334.2  | 252.5         | 184.6 |
| 1981    | 206.8  | 132.7                 | 202.9  | 289.6  | 155.5          | 144.4              | 153.7           | 238.0             | 251.5   | 184.0   | 333.9 | ..    | 336.6  | 254.0         | 187.7 |
| 1981    | 208.3  | 133.2                 | 205.4  | 290.8  | 156.2          | 145.6              | 154.9           | 239.2             | 251.5   | 185.0   | 340.0 | ..    | 339.2  | 256.4         | 190.3 |
| 1981    | 209.7  | 133.6                 | 206.9  | 294.7  | 158.6          | 145.8              | 155.7           | 240.2             | 267.1   | 186.0   | 336.7 | ..    | 344.4  | 260.3         | 193.0 |
| 1981    | 211.6  | 133.8                 | 209.6  | 298.6  | 157.1          | 146.9              | 156.3           | 242.5             | 267.1   | 189.0   | 350.7 | ..    | 347.5  | 262.1         | 196.3 |
| 1981    | 214.2  | 134.3                 | 212.1  | 303.2  | 157.9          | 147.8              | 156.7           | 245.2             | 267.1   | 191.0   | 348.8 | ..    | 348.8  | 267.1         | 197.0 |
| 1981    | 215.7  | 134.6                 | 213.6  | 308.8  | 158.0          | 148.3              | 157.0           | 246.3             | 286.0   | 191.0   | 345.1 | ..    | 353.1  | 271.9         | 198.3 |
| 1981    | 216.6  | 135.2                 | 214.3  | 310.6  | 157.5          | 148.8              | 157.2           | 247.2             | 286.0   | 193.0   | 387.5 | ..    | 355.4  | 273.7         | 199.0 |
| 1982    | 218.4  | 135.4                 | 215.6  | 315.8  | 157.9          | 149.2              | 157.7           | 249.3             | 289.9   | 194.0   | 383.7 | ..    | 360.9  | 277.3         | 200.2 |
| 1982    | 220.7  | 136.0                 | 217.4  | 324.9  | 158.4          | 149.4              | 159.0           | 251.0             | 289.9   | 194.0   | 382.8 | ..    | 368.0  | 283.4         | 201.1 |
| 1982    | 219.6  | 136.5                 | 219.6  | 327.7  | 159.2          | 149.4              | 159.1           | ..                | 289.9   | 197.0   | 392.6 | ..    | 372.6  | 288.8         | 201.1 |
|         | RATE OF INCREASE OVER ONE MONTH (IRELAND 3 MONTHS) (T/T-1) |                       |        |        |                |                    |                 |                   | TAUX DE CROISSANCE SUR UN MOIS (IRLANDE 3 MOIS) |         |       |       |        |               |       |
| 81F/81J | 1.3  | 0.8                   | 1.2    | 2.5    | 0.1            | 0.5                | 0.5             | 1.2               | 8.8   | 0.0     | -0.2  | ..    | 1.5    | 1.3           | 0.9   |
| 81M/81F | 1.8  | 0.4                   | 1.2    | 1.9    | 0.1            | 1.1                | 1.5             | 3.2               | ..  | 1.7     | 0.5   | ..    | 1.5    | 1.6           | 0.8   |
| 81A/81M | 1.2  | 0.2                   | 1.7    | 1.6    | 0.3            | 0.3                | 1.3             | 0.9               | ..  | 0.6     | 8.7   | ..    | 2.9    | 2.4           | 1.1   |
| 81M/81A | 0.8  | 0.2                   | 1.2    | 1.7    | 0.3            | 0.1                | 0.2             | 0.3               | 2.7   | 1.7     | -7.1  | ..    | 1.4    | 1.7           | 1.1   |
| 81J/81M | 0.7  | 0.6                   | 1.0    | 1.7    | 0.8            | 0.2                | 0.6             | 0.3               | ..  | 0.5     | 0.3   | ..    | 0.7    | 0.6           | 1.4   |
| 81J/81J | 0.7  | 0.4                   | 1.2    | 0.4    | 0.5            | 0.8                | 0.8             | 0.5               | ..  | 0.5     | 1.8   | ..    | 0.8    | 0.9           | 1.9   |
| 81A/81J | 0.7  | 0.3                   | 0.7    | 1.3    | 0.1            | 0.1                | 0.5             | 0.4               | 6.2   | 0.5     | -1.0  | ..    | 1.5    | 1.5           | 1.1   |
| 81S/81A | 0.9  | 0.1                   | 1.3    | 1.3    | -0.9           | 0.8                | 0.4             | 1.0               | ..  | 1.6     | 4.2   | ..    | 0.9    | 0.7           | 1.7   |
| 81O/81S | 1.2  | 0.4                   | 1.2    | 1.5    | 0.5            | 0.6                | 0.3             | 1.1               | ..  | 1.1     | -0.5  | ..    | 0.4    | 1.9           | 0.4   |
| 81M/81O | 0.7  | 0.2                   | 0.7    | 1.8    | 0.1            | 0.3                | 0.2             | 0.4               | 7.1   | 0.0     | -1.1  | ..    | 1.2    | 1.8           | 0.6   |
| 81D/81M | 0.4  | 0.4                   | 0.3    | 0.6    | -0.3           | 0.3                | 0.1             | 0.4               | ..  | 1.0     | 12.3  | ..    | 0.7    | 0.7           | 0.4   |
| 81J/81D | 0.9  | 0.1                   | 0.6    | 1.7    | 0.3            | 0.3                | 0.3             | 0.8               | ..  | 0.5     | -1.0  | ..    | 1.5    | 1.3           | 0.6   |
| 82F/82J | 1.0  | 0.4                   | 0.8    | 2.6    | 0.3            | 0.1                | 0.8             | 0.7               | 1.4   | 0.0     | -0.2  | ..    | 2.0    | 2.2           | 0.4   |
| 82M/82F | ..   | 0.4                   | 1.0    | 1.2    | 0.5            | 0.0                | 0.1             | ..                | ..  | 1.5     | 2.5   | ..    | 1.3    | 1.9           | 0.0   |
|         | RATE OF INCREASE OVER 12 MONTHS (T/T-12)                   |                       |        |        |                |                    |                 |                   | TAUX DE CROISSANCE SUR 12 MOIS                  |         |       |       |        |               |       |
| 81/80F  | 14.3   | 6.3                   | 16.4   | 21.1   | 5.7            | 5.0                | 5.8             | 14.1              | 28.0  | 8.6     | 38.2  | ..    | 13.6   | 14.1          | 13.6  |
| 81/80M  | 15.1   | 6.2                   | 15.2   | 22.3   | 4.9            | 6.0                | 7.1             | 16.5              | ..  | 9.8     | 33.4  | ..    | 13.7   | 14.5          | 12.4  |
| 81/80A  | 14.2   | 6.1                   | 15.1   | 22.5   | 5.4            | 6.2                | 8.2             | 15.9              | ..  | 9.8     | 33.6  | ..    | 14.6   | 17.6          | 11.7  |
| 81/80M  | 14.2   | 6.2                   | 15.1   | 22.5   | 5.4            | 6.0                | 8.2             | 15.9              | 19.0  | 10.2    | 23.9  | ..    | 14.9   | 17.2          | 11.6  |
| 81/80J  | 13.4   | 5.6                   | 15.3   | 23.8   | 6.0            | 5.4                | 9.5             | 12.5              | ..  | 10.2    | 23.2  | ..    | 14.8   | 16.4          | 11.0  |
| 81/80J  | 13.4   | 5.7                   | 15.3   | 23.8   | 6.0            | 5.4                | 9.5             | 12.5              | ..  | 10.2    | 23.2  | ..    | 14.8   | 16.4          | 11.0  |
| 81/80A  | 13.4   | 5.7                   | 15.3   | 23.8   | 6.0            | 5.4                | 9.5             | 12.5              | ..  | 10.2    | 23.2  | ..    | 14.8   | 16.4          | 11.0  |
| 81/80S  | 13.4   | 5.7                   | 15.3   | 23.8   | 6.0            | 5.4                | 9.5             | 12.5              | 24.1  | 8.8     | 23.1  | ..    | 15.0   | 19.4          | 14.1  |
| 81/80O  | 12.7   | 5.6                   | 14.4   | 19.5   | 6.4            | 4.5                | 8.8             | 11.8              | ..  | 8.8     | 22.5  | ..    | 15.3   | 18.0          | 15.4  |
| 81/80M  | 12.7   | 5.6                   | 14.4   | 19.5   | 6.4            | 4.5                | 8.8             | 11.8              | ..  | 8.8     | 22.5  | ..    | 15.3   | 18.0          | 15.4  |
| 81/80D  | 12.6   | 5.7                   | 14.0   | 19.6   | 6.3            | 5.6                | 8.0             | 11.3              | 27.1  | 9.8     | 17.6  | ..    | 15.4   | 17.6          | 15.0  |
| 81/80D  | 12.6   | 5.7                   | 14.0   | 19.6   | 6.3            | 5.6                | 8.0             | 11.3              | ..  | 9.8     | 17.6  | ..    | 15.4   | 17.6          | 15.0  |
| 82/81J  | 12.0   | 4.4                   | 13.1   | 18.5   | 6.0            | 5.7                | 7.8             | 11.5              | ..  | 10.3    | 16.4  | ..    | 15.6   | 19.3          | 13.7  |
| 82/81F  | 11.8   | 4.0                   | 12.8   | 18.6   | 6.2            | 5.3                | 8.2             | 10.6              | 18.4  | 10.2    | 16.7  | ..    | 16.1   | 17.6          | 13.1  |
| 82/81M  | ..   | 4.0                   | 12.8   | 18.6   | 6.2            | 5.3                | 8.2             | 10.6              | ..  | 10.2    | 16.7  | ..    | 16.6   | 18.7          | 12.6  |

CONSUMER PRICES  
ENERGY PRODUCTS

K

PRIX A LA CONSOMMATION  
PRODUITS ENERGETIQUES

|         | EUR9   | BR<br>DEUTSCH<br>LAND | FRANCE | ITALIA | NEDER-<br>LAND | BELGIE<br>BELGIE | LUXEM-<br>BOURG | UNITED<br>KINGDOM | IRELAND | DANMARK | ELLAS | EUR10 | ESPAÑA | PORTU-<br>GAL | USA   |
|---------|--|-----------------------|--------|--------|----------------|------------------|-----------------|-------------------|---------|---------|-------|-------|--------|---------------|-------|
|         | PRICE INDICES 1975 = 100 INDICES DE PRIX   |                       |        |        |                |                  |                 |                   |         |         |       |       |        |               |       |
| 1977    | 122.9  | 106.1                 | 123.7  | 155.1  | 116.0          | 110.3            | 111.0           | 130.6             | 134.8   | 117.5   | 124.0 |       |        |               | 117.4 |
| 1978    | 128.9  | 109.7                 | 134.4  | 164.2  | 123.0          | 112.7            | 112.8           | 134.3             | 135.6   | 128.1   | 128.2 |       |        |               | 124.8 |
| 1979    | 147.0  | 118.7                 | 155.9  | 186.1  | 135.0          | 126.7            | 127.2           | 158.2             | 157.1   | 170.8   | 149.1 |       |        |               | 156.2 |
| 1980    | 185.9  | 133.5                 | 196.3  | 275.2  | 162.4          | 156.9            | 151.8           | 199.6             | 217.8   | 239.3   | 212.4 |       |        |               | 204.5 |
| 1981    | 226.8  | 167.8                 | 234.0  | 336.4  | 197.1          | 187.6            | 173.1           | 240.9             | 285.9   | 300.0   | 263.9 |       |        |               | 232.0 |
| 1981 F  | 209.7  | 158.0                 | 217.5  | 307.8  | 187.9          | 177.7            | 166.1           | 218.8             | 256.7   | 272.9   | 259.3 |       |        |               | 227.1 |
| 1981 M  | 215.6  | 162.1                 | 219.0  | 315.6  | 190.8          | 179.9            | 169.2           | 230.0             |         | 287.0   | 259.1 |       |        |               | 231.8 |
| 1981 J  | 218.1  | 164.5                 | 222.3  | 317.5  | 190.8          | 178.6            | 169.2           | 233.1             |         | 289.2   | 259.8 |       |        |               | 232.0 |
| 1981 A  | 220.5  | 163.5                 | 222.5  | 330.0  | 192.8          | 178.8            | 169.2           | 236.2             | 273.1   | 297.5   | 261.9 |       |        |               | 232.0 |
| 1981 M  | 225.1  | 165.0                 | 227.8  | 340.3  | 195.1          | 183.2            | 168.8           | 241.4             |         | 306.4   | 262.1 |       |        |               | 234.4 |
| 1981 J  | 231.0  | 169.3                 | 240.7  | 347.3  | 199.9          | 192.8            | 171.9           | 244.6             |         | 316.8   | 264.6 |       |        |               | 235.4 |
| 1981 J  | 237.1  | 174.7                 | 247.2  | 349.9  | 202.6          | 196.3            | 176.1           | 253.5             |         | 315.6   | 264.8 |       |        |               | 235.6 |
| 1981 A  | 238.5  | 177.4                 | 248.6  | 348.6  | 204.9          | 198.7            | 184.2           | 253.4             |         | 312.4   | 266.2 |       |        |               | 236.2 |
| 1981 S  | 237.9  | 175.0                 | 249.1  | 348.9  | 204.9          | 195.3            | 177.0           | 254.1             |         | 309.4   | 266.3 |       |        |               | 234.9 |
| 1981 O  | 240.8  | 175.2                 | 249.4  | 344.9  | 204.7          | 198.9            | 177.5           | 255.5             | 317.6   | 316.0   | 266.9 |       |        |               | 234.5 |
| 1981 N  | 240.7  | 174.3                 | 249.4  | 349.7  | 203.3          | 198.4            | 182.4           | 253.4             |         | 316.0   | 272.3 |       |        |               | 234.8 |
| 1981 D  | 240.7  | 174.3                 | 249.4  | 349.7  | 203.3          | 198.4            | 182.4           | 253.4             |         | 316.0   | 272.3 |       |        |               | 234.8 |
| 1982 J  | 243.4  | 176.7                 | 254.2  | 371.8  | 214.6          | 199.4            | 189.0           | 253.2             |         | 329.0   |       |       |        |               | 235.8 |
| 1982 F  | ---  | 172.2                 | 255.6  | 366.5  | 214.0          | 197.2            | 188.9           | ---               |         | 329.0   |       |       |        |               | 242.1 |
| 1982 M  | ---  | 167.8                 | 261.5  | 368.1  | ---            | 198.5            | 187.7           | ---               |         | ---     |       |       |        |               | 243.8 |
|         | RATE OF INCREASE OVER ONE MONTH (IRELAND 3 MONTHS) (T/T-1) TAUX DE CROISSANCE SUR UN MOIS (IRLANDE 3 MOIS) |                       |        |        |                |                  |                 |                   |         |         |       |       |        |               |       |
| 81F/81J | 1.5  | 2.1                   | 1.7    | 0.7    | 0.9            | 2.9              | 1.5             | 1.2               | 8.8     | 2.5     | -1.4  |       |        |               | 5.1   |
| 81M/81F | 2.8  | 2.6                   | 0.7    | 2.5    | 1.5            | 1.2              | 1.9             | 5.1               |         | 5.2     | -0.1  |       |        |               | 2.0   |
| 81A/81M | 1.1  | 1.5                   | 1.5    | 0.6    | 0.0            | -0.7             | 0.0             | 1.3               |         | 0.8     | 0.3   |       |        |               | 0.1   |
| 81M/81A | 1.1  | -0.6                  | 0.1    | 3.9    | 1.0            | 0.1              | -0.1            | 1.1               | 6.4     | 2.9     | 0.8   |       |        |               | 0.0   |
| 81J/81M | 2.1  | 0.9                   | 2.4    | 3.1    | 1.2            | 2.5              | -0.3            | 2.2               |         | 3.0     | 0.1   |       |        |               | 1.0   |
| 81J/81J | 2.6  | 2.0                   | 5.7    | 0.2    | 2.5            | 5.2              | 1.8             | 1.3               |         | 3.4     | 1.0   |       |        |               | 0.4   |
| 81A/81J | 2.6  | 3.2                   | 2.7    | 1.9    | 1.4            | 1.8              | 4.6             | 3.6               | 8.5     | -0.4    | 0.1   |       |        |               | 0.1   |
| 81S/81A | 0.6  | 1.5                   | 0.6    | 0.4    | 1.1            | 1.2              | 4.4             | 0.0               |         | -1.0    | 0.5   |       |        |               | 0.2   |
| 81O/81S | -0.2   | -1.4                  | 0.2    | 0.1    | 0.0            | -1.7             | -3.9            | 3.3               |         | -1.0    | 0.0   |       |        |               | -0.5  |
| 81N/81O | 1.2  | 0.1                   | 0.1    | 4.6    | -0.1           | -1.8             | 0.3             | 0.6               | 7.2     | 2.1     | 0.2   |       |        |               | -0.2  |
| 81D/81N | -0.0   | -0.5                  | 0.0    | 1.3    | -0.7           | -0.5             | 0.8             | 0.6               |         | 0.0     | 2.0   |       |        |               | 0.1   |
| 82J/81D | 1.2  | 1.4                   | 1.9    | 0.6    | 5.6            | 3.6              | 3.8             | 3.6               |         | 4.1     | ---   |       |        |               | 0.4   |
| 82F/82J | ---  | -2.5                  | 0.6    | -1.4   | -0.3           | -1.1             | -0.1            | ---               | 0.2     | 0.0     | ---   |       |        |               | 2.7   |
| 82M/82F | ---  | -2.6                  | 2.3    | 0.4    | ---            | 0.6              | -0.6            | ---               | ---     | ---     | ---   |       |        |               | 0.7   |
|         | RATE OF INCREASE OVER 12 MONTHS (T/T-12) TAUX DE CROISSANCE SUR 12 MOIS                                    |                       |        |        |                |                  |                 |                   |         |         |       |       |        |               |       |
| 81/80F  | 20.7   | 22.1                  | 16.6   | 22.7   | 22.8           | 17.8             | 12.3            | 20.6              | 37.7    | 25.2    | 37.2  |       |        |               | 16.4  |
| 81/80M  | 22.5   | 24.3                  | 14.9   | 25.4   | 22.3           | 18.4             | 13.5            | 25.0              |         | 25.1    | 36.8  |       |        |               | 15.3  |
| 81/80A  | 20.9   | 24.6                  | 16.0   | 22.4   | 20.0           | 16.0             | 11.0            | 21.2              |         | 23.0    | 37.2  |       |        |               | 14.2  |
| 81/80M  | 20.5   | 22.7                  | 14.1   | 26.6   | 18.3           | 15.8             | 8.9             | 20.1              | 24.7    | 24.5    | 38.3  |       |        |               | 12.8  |
| 81/80J  | 21.3   | 23.6                  | 16.1   | 28.5   | 20.4           | 18.7             | 9.3             | 20.0              |         | 28.5    | 33.3  |       |        |               | 12.6  |
| 81/80J  | 21.6   | 26.2                  | 22.2   | 18.9   | 19.0           | 22.6             | 10.8            | 18.5              |         | 28.1    | 26.9  |       |        |               | 12.2  |
| 81/80A  | 24.4   | 30.3                  | 24.6   | 18.7   | 22.0           | 27.6             | 16.0            | 22.7              | 29.0    | 29.1    | 16.3  |       |        |               | 12.2  |
| 81/80S  | 24.3   | 31.0                  | 24.4   | 18.5   | 23.7           | 28.9             | 22.6            | 21.9              |         | 27.6    | 15.3  |       |        |               | 12.7  |
| 81/80O  | 23.5   | 28.2                  | 23.3   | 21.6   | 23.4           | 19.5             | 22.2            | 21.2              |         | 24.5    | 12.5  |       |        |               | 12.7  |
| 81/80N  | 22.6   | 27.0                  | 22.1   | 22.2   | 21.8           | 16.8             | 15.6            | 20.2              | 34.6    | 24.5    | 10.1  |       |        |               | 13.1  |
| 81/80D  | 20.2   | 24.3                  | 18.7   | 19.7   | 19.6           | 15.6             | 14.6            | 18.8              |         | 21.4    | 12.3  |       |        |               | 11.9  |
| 82/81J  | 17.8   | 14.1                  | 18.8   | 21.6   | 15.2           | 15.5             | 15.5            | 17.2              |         | 23.6    | ---   |       |        |               | 9.1   |
| 82/81F  | ---  | 9.0                   | 17.5   | 19.1   | 13.9           | 11.0             | 13.7            | ---               | 24.0    | 20.6    | ---   |       |        |               | 6.6   |
| 82/81M  | ---  | 3.5                   | 19.4   | 16.6   | ---            | 10.2             | 10.9            | ---               | ---     | ---     | ---   |       |        |               | 5.2   |

CONSUMER PRICES

L

PRIX A LA CONSOMMATION

|         | SWITZERLAND<br>SUISSE<br>SCHWEIZ | AUSTRIA<br>AUTRICHE<br>OESTERREICH | NORWAY<br>NORVEGE<br>NORGE | SWEDEN<br>SUEDE<br>SVERIGE     |
|---------|----------------------------------|------------------------------------|----------------------------|--------------------------------|
|         | PRICE INDICES 1975 = 100         |                                    | INDICES DE PRIX            |                                |
| 1977    | 103.0                            | 113.2                              | 119.0                      | 122.7                          |
| 1978    | 104.1                            | 117.3                              | 128.7                      | 135.0                          |
| 1979    | 107.9                            | 121.6                              | 135.0                      | 144.6                          |
| 1980    | 112.2                            | 129.3                              | 149.7                      | 164.5                          |
| 1981    | 119.5                            | 138.1                              | 170.0                      | 184.4                          |
| 1981 M  | 117.6                            | 136.2                              | 166.1                      | 180.6                          |
| 1981 A  | 117.4                            | 137.0                              | 167.2                      | 181.7                          |
| 1981 M  | 118.4                            | 136.9                              | 167.9                      | 182.9                          |
| 1981 J  | 119.2                            | 137.8                              | 170.0                      | 183.6                          |
| 1981 J  | 119.8                            | 138.6                              | 172.5                      | 185.2                          |
| 1981 A  | 121.7                            | 139.4                              | 172.5                      | 186.7                          |
| 1981 S  | 121.8                            | 139.7                              | 174.1                      | 188.0                          |
| 1981 O  | 121.3                            | 140.6                              | 174.5                      | 189.1                          |
| 1981 N  | 122.1                            | 140.3                              | 175.3                      | 189.8                          |
| 1981 D  | 122.1                            | 140.8                              | 175.8                      | 189.0                          |
| 1982 J  | 122.7                            | 142.5                              | 181.1                      | 193.1                          |
| 1982 F  | 122.9                            | 143.1                              | 182.3                      | 195.7                          |
| 1982 M  | 123.1                            | 144.2                              | 185.3                      | 196.2                          |
| 1982 A  | 123.9                            | 144.2                              | 186.2                      | 197.5                          |
|         |                                  | :                                  |                            |                                |
|         | RATE OF INCREASE OVER ONE MONTH  |                                    | (T/T-1)                    | TAUX DE CROISSANCE SUR UN MOIS |
| 81M/81F | 0.6                              | 0.8                                | 2.0                        | 0.5                            |
| 81A/81M | -0.2                             | 0.6                                | 0.6                        | 0.6                            |
| 81M/81A | 0.9                              | -0.1                               | 0.4                        | 0.6                            |
| 81J/81M | 0.7                              | 0.6                                | 1.3                        | 0.4                            |
| 81J/81J | 0.5                              | 0.6                                | 1.4                        | 0.9                            |
| 81A/81J | 1.6                              | 0.5                                | 0.0                        | 0.8                            |
| 81S/81A | 0.1                              | 0.2                                | 0.9                        | 0.7                            |
| 81O/81S | -0.4                             | 0.6                                | 0.2                        | 0.6                            |
| 81N/81O | 0.7                              | -0.2                               | 0.5                        | 0.3                            |
| 81D/81N | 0.0                              | 0.3                                | 0.3                        | -0.4                           |
| 82J/81D | 0.5                              | 1.2                                | 3.0                        | 2.2                            |
| 82F/82J | 0.2                              | 0.5                                | 0.7                        | 1.4                            |
| 82M/82F | 0.2                              | 0.7                                | 1.6                        | 0.3                            |
| 82A/82M | 0.6                              | :                                  | 0.5                        | 0.7                            |
|         |                                  | :                                  |                            |                                |
|         | RATE OF INCREASE OVER 12 MONTHS  |                                    | (T/T-12)                   | TAUX DE CROISSANCE SUR 12 MOIS |
| 81/80M  | 6.4                              | 7.2                                | 14.5                       | 13.0                           |
| 81/80A  | 5.7                              | 7.4                                | 14.6                       | 12.9                           |
| 81/80M  | 5.9                              | 6.8                                | 15.9                       | 13.2                           |
| 81/80J  | 6.4                              | 6.3                                | 13.9                       | 13.3                           |
| 81/80J  | 6.5                              | 6.5                                | 14.2                       | 13.4                           |
| 81/80A  | 7.5                              | 6.4                                | 13.5                       | 13.6                           |
| 81/80S  | 7.5                              | 6.9                                | 13.5                       | 11.3                           |
| 81/80O  | 7.2                              | 7.2                                | 12.6                       | 10.4                           |
| 81/80N  | 7.0                              | 7.0                                | 12.4                       | 10.1                           |
| 81/80D  | 6.6                              | 6.4                                | 11.9                       | 9.2                            |
| 82/81J  | 6.1                              | 6.1                                | 12.0                       | 9.5                            |
| 82/81F  | 5.2                              | 6.0                                | 11.9                       | 8.9                            |
| 82/81M  | 4.7                              | 5.9                                | 11.5                       | 8.7                            |
| 82/81A  | 5.5                              | :                                  | 11.4                       | 8.7                            |

## CONSUMER PRICES

## M

## PRIX A LA CONSOMMATION

|      | BR            |                 |        |        |                |                  |                 |                   |                 |         |       |        |               |       |       |  |
|------|---------------|-----------------|--------|--------|----------------|------------------|-----------------|-------------------|-----------------|---------|-------|--------|---------------|-------|-------|--|
|      | EUR9<br>LAND  | DEUTSCH<br>LAND | FRANCE | ITALIA | NEDER-<br>LAND | BELGIE<br>BELGIE | LUXEM-<br>BOURG | UNITED<br>KINGDOM | IRELAND         | DANMARK | ELLAS | ESPANA | PORTU-<br>GAL | USA   | JAPAN |  |
|      | PRICE INDICES |                 |        |        |                |                  |                 |                   | INDICES DE PRIX |         |       |        |               |       |       |  |
|      | 1975 = 100    |                 |        |        |                |                  |                 |                   |                 |         |       |        |               |       |       |  |
| 1955 | 39.3          | 52.0            | 33.0   | 36.3   | 39.0           | 45.6             | 51.3            | 32.0              | 29.6            | 32.4    | 40.8  | 21.5   | 28.9          | 49.8  | 30.7  |  |
| 1956 | 40.5          | 53.2            | 33.6   | 37.5   | 40.0           | 46.8             | 51.6            | 33.6              | 30.9            | 34.4    | 42.3  | 22.7   | 29.8          | 50.5  | 30.8  |  |
| 1957 | 41.5          | 54.3            | 34.5   | 37.9   | 41.6           | 48.3             | 53.8            | 34.8              | 32.1            | 34.7    | 43.3  | 25.2   | 30.3          | 52.2  | 31.8  |  |
| 1958 | 43.5          | 55.5            | 39.7   | 39.0   | 42.2           | 48.9             | 54.3            | 35.9              | 33.6            | 35.0    | 43.8  | 28.6   | 30.7          | 53.6  | 31.7  |  |
| 1959 | 44.2          | 56.1            | 42.1   | 39.0   | 42.6           | 49.6             | 54.5            | 36.1              | 33.6            | 35.5    | 44.9  | 30.7   | 31.1          | 54.1  | 32.0  |  |
| 1960 | 45.1          | 56.9            | 43.8   | 39.7   | 43.6           | 49.7             | 54.8            | 36.4              | 33.7            | 36.0    | 45.5  | 31.4   | 32.0          | 55.0  | 32.9  |  |
| 1961 | 46.1          | 58.3            | 44.9   | 40.1   | 44.2           | 50.2             | 55.0            | 37.7              | 34.7            | 37.2    | 46.4  | 31.7   | 32.5          | 55.5  | 34.7  |  |
| 1962 | 48.1          | 60.6            | 47.2   | 42.4   | 45.3           | 50.7             | 55.5            | 39.2              | 36.1            | 40.0    | 46.2  | 33.5   | 33.4          | 56.2  | 37.0  |  |
| 1963 | 50.1          | 62.4            | 50.0   | 45.6   | 46.8           | 52.0             | 57.1            | 40.0              | 37.0            | 42.5    | 47.6  | 36.4   | 34.0          | 56.9  | 40.2  |  |
| 1964 | 51.9          | 63.8            | 51.6   | 48.3   | 49.5           | 54.1             | 58.9            | 41.4              | 39.5            | 43.8    | 48.0  | 39.0   | 35.2          | 57.6  | 41.7  |  |
| 1965 | 53.9          | 65.9            | 53.0   | 50.5   | 51.8           | 56.3             | 60.9            | 43.4              | 41.5            | 46.5    | 49.4  | 44.2   | 36.4          | 58.6  | 44.5  |  |
| 1966 | 55.7          | 68.2            | 54.4   | 51.6   | 54.8           | 58.7             | 62.5            | 45.1              | 42.7            | 50.0    | 51.9  | 46.9   | 38.3          | 60.3  | 46.7  |  |
| 1967 | 57.2          | 69.4            | 55.9   | 53.6   | 56.7           | 60.4             | 64.3            | 46.2              | 44.1            | 54.0    | 52.8  | 49.9   | 40.4          | 62.0  | 48.6  |  |
| 1968 | 59.0          | 70.5            | 58.4   | 54.2   | 58.8           | 62.0             | 65.9            | 48.4              | 46.1            | 58.2    | 53.0  | 52.4   | 42.8          | 64.6  | 51.2  |  |
| 1969 | 61.4          | 71.8            | 62.3   | 55.7   | 63.1           | 63.9             | 67.5            | 51.0              | 49.6            | 60.3    | 54.3  | 53.5   | 46.6          | 68.1  | 53.9  |  |
| 1970 | 64.3          | 74.3            | 65.7   | 58.4   | 65.9           | 66.9             | 70.6            | 54.2              | 53.6            | 64.3    | 56.0  | 56.6   | 49.6          | 72.1  | 58.0  |  |
| 1971 | 68.2          | 78.2            | 69.2   | 61.2   | 70.9           | 70.1             | 73.9            | 59.3              | 58.4            | 68.0    | 57.7  | 61.3   | 55.5          | 75.2  | 61.5  |  |
| 1972 | 72.5          | 82.5            | 73.4   | 64.8   | 76.6           | 74.1             | 77.7            | 63.6              | 63.5            | 72.4    | 60.2  | 66.3   | 61.4          | 77.7  | 64.3  |  |
| 1973 | 78.4          | 88.2            | 78.8   | 71.8   | 82.8           | 78.7             | 82.5            | 69.4              | 70.7            | 79.1    | 69.5  | 73.9   | 69.4          | 82.5  | 71.9  |  |
| 1974 | 88.3          | 94.4            | 89.5   | 85.5   | 91.0           | 88.7             | 90.3            | 80.5              | 82.7            | 91.2    | 88.2  | 85.5   | 86.8          | 91.6  | 89.4  |  |
| 1975 | 100.0         | 100.0           | 100.0  | 100.0  | 100.0          | 100.0            | 100.0           | 100.0             | 100.0           | 100.0   | 100.0 | 100.0  | 100.0         | 100.0 | 100.0 |  |
| 1976 | 110.8         | 104.3           | 109.6  | 116.8  | 109.0          | 109.2            | 109.8           | 116.5             | 118.0           | 109.0   | 113.3 | 117.6  | 120.1         | 105.7 | 109.3 |  |
| 1977 | 122.4         | 108.1           | 119.9  | 136.6  | 116.0          | 116.9            | 117.2           | 135.0             | 134.1           | 121.1   | 127.1 | 146.5  | 153.0         | 112.6 | 118.1 |  |
| 1978 | 131.6         | 111.1           | 130.8  | 153.2  | 120.9          | 122.1            | 120.8           | 146.2             | 144.3           | 133.3   | 143.0 | 175.4  | 186.6         | 121.2 | 122.6 |  |
| 1979 | 144.8         | 115.6           | 144.8  | 175.8  | 126.1          | 127.6            | 126.3           | 165.8             | 163.4           | 146.1   | 170.3 | 202.9  | 231.8         | 134.9 | 127.0 |  |
| 1980 | 164.8         | 122.0           | 164.5  | 213.1  | 134.9          | 136.1            | 134.2           | 195.6             | 193.2           | 164.0   | 212.6 | 234.5  | 270.2         | 153.1 | 137.2 |  |
| 1981 | 185.1         | 129.2           | 186.5  | 254.8  | 144.2          | 146.5            | 145.1           | 218.9             | 232.6           | 183.3   | 264.7 | 268.6  | 324.2         | 168.9 | 144.0 |  |

Methodological Note

1. The consumer price indices presented here are national indices which may appear under different titles in some of the countries. The development of the general index published by EUROSTAT is equivalent to that published by the country.
2. The components of this general index correspond to groupings of the national indices aggregated according to a harmonized classification of the ESA (European System of Integrated Economic Accounts). The price development of these components is equal to the price development of the national indices for the same components of the classification.
3. The scope of the general index differs according to each country. This can be due to population differences (specific income classes, certain socio-occupational categories, or all households); differences in geographic zones (capital, urban areas, rural areas); or differences in the concepts of expenditure on rent, health, etc. Finally, methods of seasonal correction differ from country to country.
4. A fixed base system is used in some countries, while others use a chain system (variable weights). Base years may also differ between countries. For better comparison EUROSTAT has taken 1975 as the base year for all countries.
5. The EUR 9 indices are obtained from the arithmetic average of the national indices weighted by the relative share of each country in real values, as obtained for final household consumption and its components from the comparison in real values of the aggregates of ESA (1975).

Note méthodologique

1. Les indices de prix à la consommation présentés ici sont les indices nationaux. Ces indices portent des noms différents dans les différents pays. L'indice général publié par l'EUROSTAT correspond toujours, en évolution, à l'indice général publié par le pays.
2. Les composantes de cet indice général correspondent à des regroupements des indices nationaux agrégés selon une classification harmonisée conforme au SEC (Système Européen des Comptes nationaux). Les évolutions de prix correspondent pour ces regroupements aux évolutions constatées par les indices nationaux pour le même champ de classification.
3. Le champ couvert par l'indice général est différent selon les pays, aussi bien concernant la population concernée (tranche de revenu spécifique, certaines catégories socio-professionnelles, ou l'ensemble des ménages) que en ce qui concerne les zones géographiques concernées (capitale, zones urbaines, ensemble des pays, etc...) ou encore concernant les concepts de dépense pour les loyers, la santé, etc.... Enfin, les traitements statistiques concernant les corrections des variations saisonnières sont aussi différents selon les pays.
4. Un système de base fixe est utilisé dans certains pays, dans d'autres un système en chaîne est mis en oeuvre (pondérations variables). Les années de référence utilisées au niveau national pour présenter les indices, sont différentes selon les pays. Pour faciliter la comparaison l'EUROSTAT a choisi l'année 1975 comme année commune pour la présentation de ces indices.
5. Les indices EUR 9 sont obtenus comme moyenne arithmétique des indices nationaux pondérés par les parts relatives des différents pays en valeurs réelles, telles qu'elles ont été obtenues pour la consommation finale des ménages et ses composantes, lors de la comparaison en valeurs réelles des agrégats du SEC-1975.