



# CONSUMER PRICE INDEX

LIBRARY

(beginning No 1, 1982...)

Monthly Bulletin

24 February 1982

## CONSUMER PRICE INDEX : JANUARY 1982

The consumer price index for the Community for January 1982 shows an increase of 1 % compared with December 1981, which is broadly in line with the average monthly increase of 1 % throughout 1981.

The increase over the last 12 months is 12.5 % for EUR 10 : for member states it is as follows :

FR of Germany	6.3 %	Luxembourg	8.7 %	France	13.8 %
Netherlands	7.3 %	United Kingdom	12.0 %	Italy	17.5 %
Belgium	8.3 %	Denmark	12.4 %	Greece	20.9 %

For the first time the monthly bulletin is presenting detailed price indices for EUR 9 together with an explanatory note and graphical presentation (See Methodological note p. 15).

Eight indices corresponding to categories of household consumption are given. The ninth category "K" covers energy products which are also constituent components in categories "E" "Rent, fuel and power" and "G" "Transport and communications".

It can be seen, that, since the end of summer 1981, the rate of increase in prices for energy products, which was more than 20 % per annum over the previous two years, has decreased to an annual rate of less than 10 % for EUR 9. No significant decreases in the rates of increases have occurred in the other categories with the exception of "E" (Rent, fuel and power) and especially "G" (Transport and communications), which both reflect the slowing down in the rate of increase in energy prices.

Since 1975 three categories have shown a relatively low rate of increase in prices when compared to the general index : these are :

- "D" "Clothing and footwear"
- "F" "Household goods and services"
- "H" "Recreation, education, etc."

It is also interesting to note that the increase in prices for "C" "Drinks and tobacco", which between 1975 and 1979 was less than the rate for "B" "Food", has accelerated over the last two years. This has been caused by fiscal measures taken by the member states during this period, such as the increase in duty on alcohol and tobacco.

Contents : Table A - General index, page 3  
Table B - K - Indices for sub groups, pages 5-13

N.B. General price indices for Switzerland, Austria, Norway and Sweden can be found on page 14.

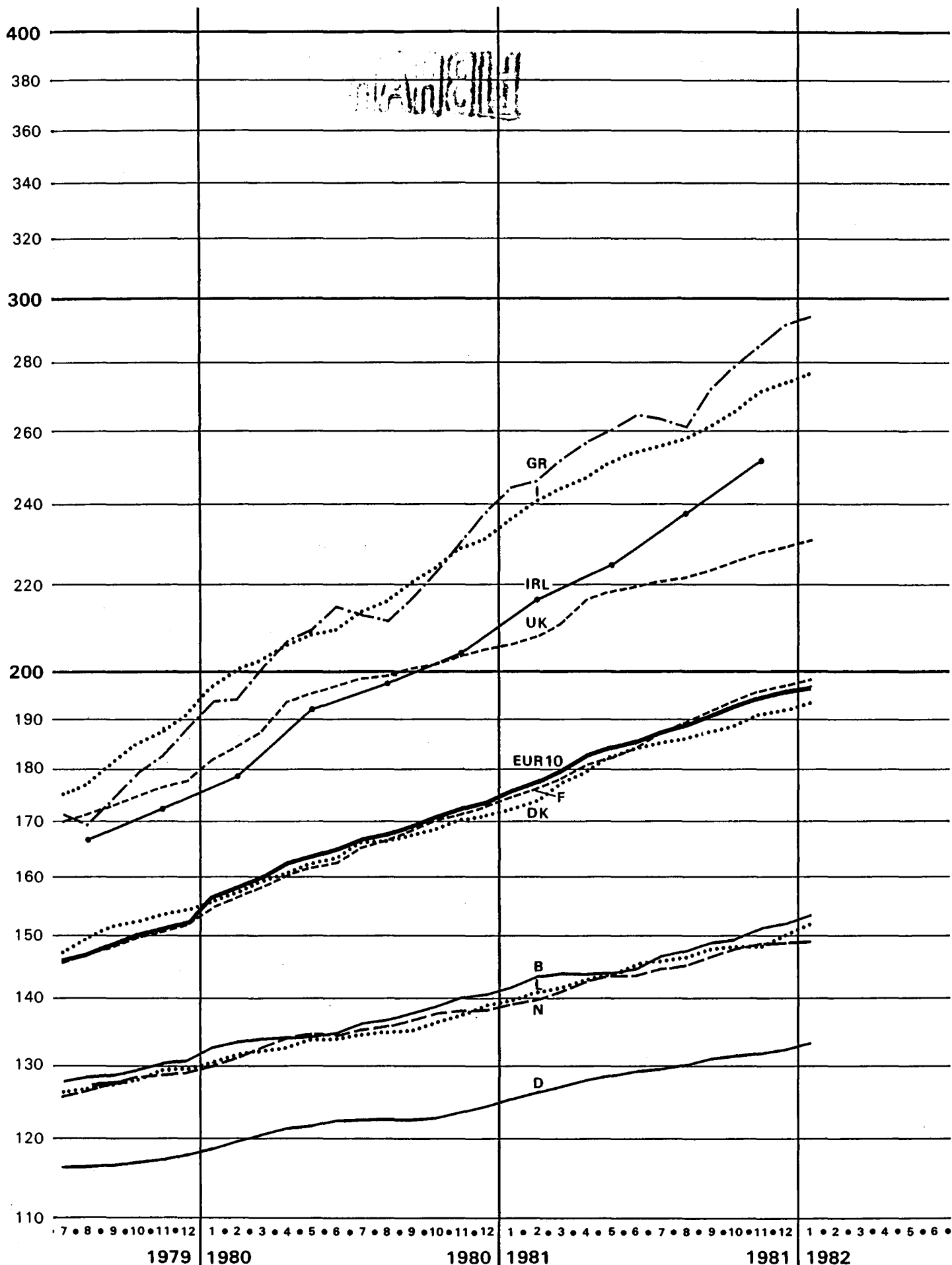
Also available in FR

CONSUMER PRICE INDICES

INDICES DES PRIX A LA CONSOMMATION

GENERAL INDEX

INDICE GÉNÉRAL

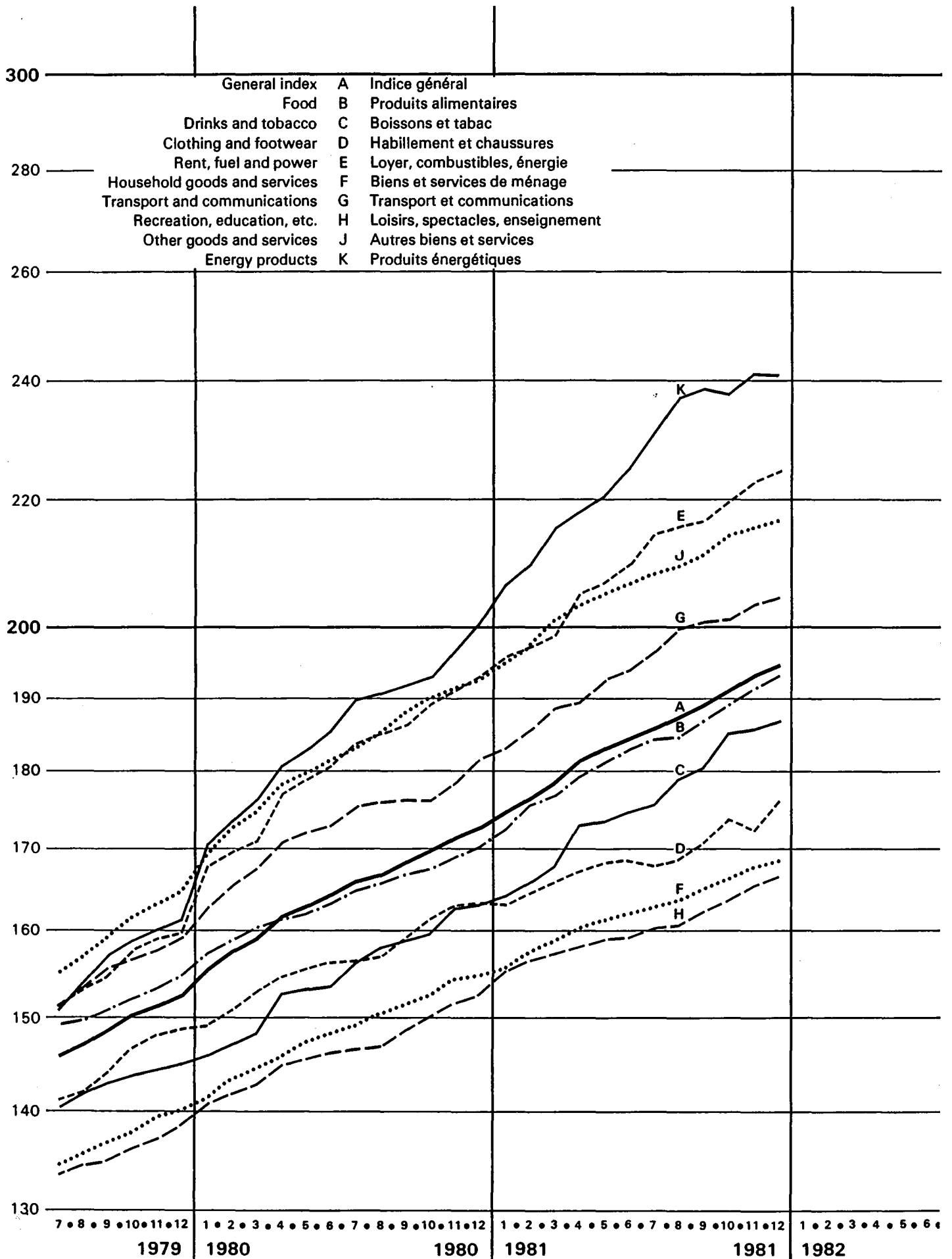


1975=100

	EUR9	BR DEUTSCH LAND	FRANCE	ITALIA	NEDER- LAND	BELGIQUE BELGIE	LUXEM- BOURG	UNITED KINGDOM	IRELAND	DANMARK	ELLAS	EUR10	ESPANA	PORTU- GAL	USA	JAPAN	
	PRICE INDICES 1975 = 100								INDICES DE PRIX								
1977	122.4	108.1	119.9	136.6	116.0	116.9	117.2	135.0	134.1	121.1	127.1	146.5	154.0	112.6	118.1		
1978	131.6	111.1	130.8	153.2	120.9	122.1	120.8	146.2	144.3	133.3	143.0	175.4	189.0	121.2	122.6		
1979	144.8	115.6	144.8	175.8	126.1	127.6	126.3	165.8	163.4	146.1	170.3	202.9	233.4	134.9	127.0		
1980	164.8	122.0	164.5	213.1	134.9	136.1	134.2	195.6	193.2	164.0	212.6	165.5	234.5	272.5	153.1	137.2	
1981	185.0	129.2	186.5	254.8	144.2	146.5	145.1	218.9	231.2	183.3	264.7	186.3	268.6	327.1	168.9	139.6	
1980	172.8	124.4	172.8	231.6	138.2	140.6	138.8	204.5		171.0	237.9	173.9	249.0	289.6	160.3	139.6	
1981	174.7	125.4	174.7	236.0	139.0	141.8	139.9	205.7		172.1	243.7	175.9	254.1	297.8	161.4	141.3	
1981	176.6	126.4	176.4	240.4	139.8	143.1	140.7	207.6	216.5	173.9	246.0	177.8	255.4	302.2	163.2	141.4	
1981	178.6	127.2	178.2	243.8	141.1	144.0	141.7	210.7		177.3	251.9	179.9	260.4	306.1	164.4	142.2	
1981	181.4	128.0	180.6	247.0	142.6	143.9	142.6	216.8		179.4	256.9	182.7	263.0	314.6	165.5	143.3	
1981	183.0	128.6	182.2	251.0	143.3	143.8	143.7	218.2	225.0	182.3	260.0	184.3	264.3	316.4	166.8	144.8	
1981	184.3	129.2	184.0	253.8	143.5	144.6	145.2	219.4		184.1	264.6	185.7	264.6	318.6	168.3	144.8	
1981	185.9	129.7	187.1	255.3	144.5	146.9	145.9	220.4		185.3	263.1	187.2	269.7	327.7	170.2	144.1	
1981	187.4	130.1	189.5	257.7	145.0	147.7	146.4	222.0	237.6	186.1	261.1	188.6	273.1	336.6	171.5	143.2	
1981	189.1	130.8	191.7	261.4	146.7	149.0	147.7	223.3		187.7	272.3	190.5	275.3	342.2	173.2	145.6	
1981	191.1	131.2	194.0	265.9	148.0	149.6	148.1	225.3		188.7	279.4	192.6	278.3	348.4	173.6	146.1	
1981	193.1	131.8	195.8	270.7	148.4	151.1	149.0	227.7	251.5	191.0	285.4	194.7	280.5	352.9	174.1	145.7	
1981	194.3	132.2	196.9	273.8	148.4	152.1	150.0	229.1		191.9	291.5	196.0	285.0	362.0	174.6	145.8	
1982	196.2	133.4	198.9	277.3	149.1	153.5	152.0	230.4		193.4	294.7	197.9	285.0	368.4	174.6	145.9	
	RATE OF INCREASE OVER ONE MONTH (IRELAND 3 MONTHS) (T/T-1)								TAUX DE CROISSANCE SUR UN MOIS (IRLANDE 3 MOIS)								
80D/80N	0.8	0.6	0.9	1.2	0.1	0.3	1.1	0.6		0.4	3.2	0.8	0.9	2.9	0.9	-0.6	
81J/80D	1.1	0.8	1.1	1.9	0.6	0.8	0.8	0.6		0.6	2.4	1.1	2.0	2.8	0.8	1.2	
81F/81J	1.1	0.7	1.0	1.9	0.6	0.9	0.6	0.9	6.2	1.0	0.9	1.1	0.5	1.5	1.0	0.1	
81M/81F	1.1	0.7	1.0	1.4	0.9	0.6	0.8	1.5		2.0	2.4	1.2	2.0	1.3	0.7	0.6	
81A/81M	1.6	0.7	1.3	1.3	1.1	-0.1	0.6	2.9		1.2	2.0	1.6	1.0	2.8	0.6	0.8	
81M/81A	0.9	0.4	0.9	1.6	0.5	-0.0	0.8	0.6	3.9	1.6	1.2	0.9	0.5	0.6	0.8	1.0	
81J/81M	0.7	0.5	1.0	1.1	0.1	0.6	1.0	0.5		1.0	1.8	0.8	0.1	0.7	0.9	0.0	
81J/81J	0.9	0.4	1.7	0.6	0.7	1.6	0.5	0.5		0.7	-0.5	0.8	2.0	2.9	1.1	-0.5	
81A/81J	0.8	0.3	1.3	0.9	0.3	0.5	0.4	0.7	5.6	0.4	-0.8	0.7	1.3	2.7	0.8	-0.6	
81S/81A	0.9	0.5	1.2	1.4	1.2	0.9	0.9	0.6		0.9	4.3	1.0	0.8	1.7	1.0	1.7	
81O/81S	1.1	0.3	1.2	1.7	0.9	0.4	0.3	0.9		0.5	2.6	1.1	1.1	1.8	0.2	0.3	
81N/81O	1.0	0.5	0.9	1.8	0.3	1.0	0.6	1.1	5.9	1.2	2.1	1.1	0.8	1.3	0.3	-0.3	
81D/81N	0.6	0.3	0.6	1.1	0.0	0.6	0.6	0.6		0.5	2.1	0.7	1.6	2.6	0.3	0.1	
82J/81D	1.0	0.9	1.0	1.3	0.5	1.0	1.4	0.6		0.8	1.1	1.0	1.6	1.8	0.3	0.1	
	RATE OF INCREASE OVER 12 MONTHS (T/T-12)								TAUX DE CROISSANCE SUR 12 MOIS								
80/79D	13.3	5.5	13.7	21.3	7.0	7.5	7.0	15.1		10.9	26.2	15.2	13.1	12.4	7.1	7.1	
81/80J	12.4	5.5	12.8	19.8	6.9	7.0	7.3	13.0		10.7	25.6	12.7	14.4	15.6	11.7	7.4	
81/80F	12.2	5.5	12.6	20.0	6.5	7.1	7.0	12.5	21.0	10.7	26.5	12.5	14.0	15.0	11.3	6.5	
81/80M	12.3	5.5	12.5	20.4	6.5	7.6	7.4	12.6		10.7	25.6	12.6	15.6	15.0	10.6	6.2	
81/80A	12.1	5.5	12.7	20.1	6.3	7.4	7.4	12.0		11.3	24.3	12.4	15.6	17.3	10.0	5.2	
81/80M	12.2	5.5	12.7	20.8	6.4	7.0	7.6	11.7	17.1	11.8	24.3	12.4	15.4	18.2	9.8	5.4	
81/80J	12.3	5.5	13.2	21.0	6.7	7.3	8.4	11.3		12.0	23.3	12.5	13.8	17.6	9.6	5.1	
81/80J	12.0	5.5	13.3	19.6	6.8	7.8	8.5	10.9		11.6	23.5	12.3	14.5	19.8	10.7	4.3	
81/80A	12.2	6.0	13.7	19.2	6.8	8.1	8.5	11.4	20.1	11.6	23.7	12.5	14.6	21.8	10.9	3.8	
81/80S	12.3	6.4	13.9	18.7	7.2	8.4	9.4	11.4		11.6	25.4	12.6	14.4	23.6	11.0	4.0	
81/80N	12.5	6.7	14.1	18.7	7.5	7.8	8.8	11.7		11.9	25.4	12.8	14.6	24.6	10.2	4.2	
81/80N	12.6	6.6	14.3	18.3	7.5	7.8	8.5	12.0	23.3	11.9	25.4	12.8	13.7	25.4	9.6	3.7	
81/80D	12.4	6.3	13.9	18.2	7.4	8.1	8.0	12.0		12.2	23.8	12.7	14.5	25.0	8.9	4.4	
82/81J	12.3	6.3	13.8	17.5	7.3	8.3	8.7	12.0		12.4	20.9	12.5	14.5	23.7	8.9	3.3	

ω

EUR 9



1975 = 100

CONSUMER PRICES

FOOD (EXCL. DRINKS AND MEALS OUT)

B

PRIX A LA CONSOMMATION

PRODUITS ALIMENTAIRES (SANS BOISSONS ET REPAS A L'EXTERIEUR)

	EUR9	BR DEUTSCH LAND	FRANCE	ITALIA	NEDER- LAND	BELGIQUE BELGIE	LUXEM- BOURG	UNITED KINGDOM	IRELAND	DANMARK	ELLAS	EUR10	ESPAÑA	USA
	PRICE INDICES 1975 = 100 INDICES DE PRIX													
1977 0	128.2	109.6	125.8	139.4	119.3	118.1	124.0	143.7	135.4	129.0	129.8	146.2	109.6	
1978 0	136.8	110.1	135.5	157.4	118.6	119.6	127.3	153.7	148.4	140.0	148.3	174.1	120.5	
1979 0	148.7	111.2	147.1	179.2	120.5	120.7	130.1	172.3	170.4	147.8	176.2	191.8	133.7	
1980 0	164.2	116.1	161.3	207.3	125.1	125.3	134.3	192.6	186.2	162.6	224.8	209.1	145.2	
1981 0	183.0	122.0	181.4	245.0	131.9	132.6	143.8	209.0	212.6	182.3	292.5	237.8	156.6	
1980 N	168.7	116.2	165.9	218.5	126.7	128.2	136.6	195.4	192.5	168.0	240.9	218.6	150.8	
1980 D	170.2	117.1	167.1	221.2	126.8	128.3	137.3	197.6	168.0	257.2	223.1	223.1	151.9	
1981 J	172.7	119.4	168.6	224.8	127.3	130.2	138.6	200.5	170.0	271.5	228.7	228.7	153.1	
1981 F	175.7	120.1	170.4	229.4	128.1	130.8	139.2	207.6	201.0	172.0	275.9	228.0	154.4	
1981 M	176.8	121.2	172.6	233.4	129.2	131.4	139.6	203.9	175.0	279.0	232.5	232.5	155.2	
1981 A	179.2	123.3	174.5	237.4	130.0	130.2	140.2	206.3	178.0	282.9	231.6	231.6	155.6	
1981 M	181.2	123.3	177.4	241.2	131.0	129.8	141.7	208.3	207.8	180.0	286.4	230.3	155.4	
1981 J	183.0	122.8	179.6	245.6	130.6	129.5	144.2	210.9	182.0	290.2	228.8	228.8	156.0	
1981 J	184.2	122.1	182.2	247.6	132.1	131.5	145.1	210.7	182.0	284.5	237.0	237.0	157.5	
1981 A	184.4	120.7	184.5	248.8	132.5	132.1	144.9	208.8	218.4	185.0	287.3	242.6	158.2	
1981 S	186.9	121.2	188.0	253.5	133.9	134.2	146.1	210.6	188.0	299.6	244.2	244.2	158.5	
1981 O	189.1	122.2	190.9	256.4	135.0	135.2	147.6	213.1	191.0	306.7	247.4	247.4	158.3	
1981 N	191.1	123.4	192.9	259.2	136.0	137.5	148.8	215.4	223.3	192.0	318.9	248.4	158.0	
1981 D	193.0	124.0	194.7	262.6	136.5	139.2	149.5	217.7	192.0	326.5	254.1	254.1	158.4	
	RATE OF INCREASE OVER ONE MONTH (IRELAND 3 MONTHS) (T/T-1) TAUX DE CROISSANCE SUR UN MOIS (IRLANDE 3 MOIS)													
80N/80O	0.7	0.9	0.7	1.3	0.0	0.1	0.6	0.3	2.0	0.6	7.3	1.1	0.8	
80D/80N	0.9	0.8	0.7	1.2	0.1	0.1	0.5	1.1	0.0	0.0	6.8	2.1	0.7	
81J/80D	1.4	2.0	0.9	1.6	0.4	1.5	0.9	1.5	1.2	1.2	5.6	2.5	0.8	
81F/81J	1.8	0.6	1.1	2.0	0.6	0.5	0.4	3.5	4.4	1.2	1.6	-0.3	0.8	
81M/81F	0.6	0.9	1.3	1.7	0.9	0.5	0.3	-1.8	1.7	1.7	1.1	2.0	0.5	
81A/81M	1.3	1.7	1.1	1.7	0.6	-0.9	0.4	1.2	1.7	1.7	1.4	-0.4	0.3	
81M/81A	1.1	0.0	1.7	1.6	0.8	-0.3	1.1	1.0	3.4	1.1	1.2	-0.6	-0.1	
81J/81M	1.0	-0.4	1.2	1.8	-0.3	-0.2	1.8	1.2	1.1	1.1	1.3	-0.7	0.4	
81J/81J	0.6	-0.6	1.4	0.8	1.1	1.5	0.6	-0.1	0.0	0.0	-1.9	3.6	1.0	
81A/81J	0.1	-1.1	1.3	0.5	0.3	0.5	-0.1	-0.9	5.1	1.6	1.0	2.4	0.4	
81S/81A	1.4	0.4	1.9	1.9	1.1	1.6	0.8	0.9	1.6	1.6	4.3	0.6	0.2	
81O/81S	1.2	0.8	1.5	1.1	0.8	0.7	1.0	1.2	1.6	1.6	2.4	1.3	-0.1	
81N/81O	1.0	1.0	1.0	1.1	0.7	1.7	0.8	1.1	2.2	0.5	4.0	0.4	-0.2	
81D/81N	1.0	0.5	0.9	1.3	0.4	1.2	0.5	1.1	0.0	0.0	2.4	2.3	0.3	
	RATE OF INCREASE OVER 12 MONTHS (T/T-12) TAUX DE CROISSANCE SUR 12 MOIS													
80/79N	10.1	4.4	9.4	16.3	4.0	5.2	4.0	9.3	11.0	9.8	30.5	12.2	10.6	
80/79D	10.0	4.6	9.6	16.1	3.7	4.7	4.3	9.2	11.0	9.8	31.3	12.3	10.2	
81/80J	9.7	4.7	9.5	15.2	3.7	5.2	4.9	8.6	12.0	10.4	30.5	13.0	10.2	
81/80F	10.6	4.8	10.0	15.5	3.4	5.2	5.0	11.7	12.0	10.3	29.8	12.7	10.6	
81/80M	10.3	5.3	10.9	16.1	4.4	6.1	5.0	7.8	12.0	10.8	26.7	15.2	10.1	
81/80A	11.1	6.1	11.6	17.8	4.6	6.2	5.3	7.7	12.9	11.9	26.7	14.7	9.6	
81/80M	11.8	5.6	12.9	19.1	5.4	6.2	6.3	8.2	12.9	12.5	26.4	14.3	8.8	
81/80J	12.2	4.4	13.7	20.3	5.1	5.9	7.9	8.6	12.9	13.0	27.0	11.7	8.6	
81/80J	11.7	4.0	13.9	19.5	5.8	5.7	8.2	7.6	15.7	10.3	30.0	13.5	8.4	
81/80A	11.3	2.9	14.1	18.8	5.4	4.4	7.3	7.1	15.7	10.8	32.7	13.6	7.2	
81/80S	12.1	4.4	15.1	19.1	5.8	4.3	7.9	8.1	15.7	11.9	36.0	13.8	6.5	
81/80O	13.0	6.1	15.9	18.9	6.6	5.5	8.7	9.3	16.0	14.4	36.7	14.4	5.8	
81/80N	13.3	6.2	16.3	18.6	7.3	7.3	8.9	10.2	16.0	14.3	32.4	13.6	4.8	
81/80D	13.4	5.9	16.5	18.7	7.6	8.5	8.9	10.2	16.0	14.3	27.0	13.9	4.3	

## CONSUMER PRICES

## DRINKS (HOME CONSUMPTION) AND TOBACCO

## PRIX A LA CONSOMMATION

## BOISSONS (A DOMICILE) ET TABAC

C

	EUR9	BR DEUTSCH LAND	FRANCE	ITALIA	NEDE- LAND	BELGIQUE BELGIE	LUXEM- BOURG	UNITED KINGDOM	IRELAND	DANMARK	ELLAS	EUR10	ESPANA	USA
	PRICE INDICES				1975 = 100				INDICES DE PRIX					
1977	119.8	109.4	117.2	122.0	107.9	119.3	119.3	136.5	123.0	122.0	114.8			
1978	129.3	111.0	129.3	137.8	114.1	129.1	125.2	145.5	128.5	135.0	124.2			
1979	139.1	113.2	143.5	150.9	116.0	131.7	131.3	159.1	146.3	144.0	136.9			
1980	155.4	116.1	158.8	176.3	128.8	135.8	133.6	185.9	182.1	155.2	158.4			
1981	169.4	120.3	181.6	174.0	135.8	147.7	148.5	221.2	237.6	163.7	183.0			
1980	162.7	116.7	167.0	192.5	130.3	139.7	134.6	192.5	194.0	159.0	165.3			
1980	163.2	116.9	168.0	193.6	130.6	140.2	139.0	192.3		159.0	165.8			
1981	164.0	117.2	168.9	194.6	131.4	140.8	139.1	192.4		160.0	165.9			
1981	165.9	117.6	171.2	195.7	131.4	141.4	141.3	197.9	220.8	160.0	168.8			
1981	167.9	118.0	174.2	196.5	132.6	142.8	146.6	202.8		160.0	169.9			
1981	173.0	119.7	175.8	198.3	136.1	143.0	148.2	222.3		163.0	174.0			
1981	173.6	120.2	177.0	199.5	136.5	141.1	148.6	222.4	226.6	163.0	184.6			
1981	174.3	120.6	178.0	200.3	136.8	143.5	149.5	222.3		163.0	185.1			
1981	175.6	121.0	179.1	201.2	136.9	148.6	149.7	224.7		163.0	185.0			
1981	178.8	121.4	187.4	201.7	137.2	151.2	149.7	229.4	244.3	164.0	189.4			
1981	180.4	121.7	189.1	203.1	137.5	154.0	149.9	232.9		166.0	192.1			
1981	185.1	122.0	190.7	219.6	137.6	155.0	150.0	235.9		167.0	192.8			
1981	185.8	122.2	192.4	220.6	137.9	155.5	154.8	235.9	258.6	167.0	193.5			
1981	186.5	122.3	194.2	221.7	137.9	155.8	155.0	235.8		168.0	194.0			
	RATE OF INCREASE OVER ONE MONTH (IRELAND 3 MONTHS) (T/T-1)				TAUX DE CROISSANCE SUR UN MOIS (IRLANDE 3 MOIS)									
80N/80N	1.9	0.1	0.7	6.7	0.3	0.4	0.2	0.0	1.4	0.6	0.1			
80D/80N	0.3	0.2	0.6	0.6	0.2	0.4	3.3	-0.1		0.0	0.3			
81J/80D	0.5	0.3	0.5	0.5	0.6	0.4	0.1	0.1		0.6	0.1			
81F/81J	1.2	0.3	1.4	0.6	0.0	0.4	1.6	2.9	13.8	0.0	1.7			
81M/81F	1.2	0.3	1.8	0.4	0.9	1.0	3.8	2.5		0.0	0.7			
81A/81M	3.0	1.4	0.9	0.9	2.6	0.1	1.1	9.6		1.9	2.4			
81M/81A	0.4	0.4	0.7	0.6	0.3	-1.3	0.3	0.0	2.6	0.0	6.1			
81J/81M	0.3	0.3	0.6	0.4	0.2	1.7	0.6	-0.0		0.0	0.3			
81J/81J	0.8	0.3	0.6	0.4	0.1	3.6	0.1	1.1		0.0	-0.0			
81A/81J	1.8	0.3	4.6	0.2	0.2	1.7	0.0	2.1	7.8	0.6	2.3			
81S/81A	0.9	0.2	0.9	0.7	0.2	1.9	0.1	1.5		1.2	1.4			
81O/81S	2.6	0.2	0.8	8.1	0.1	0.6	0.1	1.3		0.6	0.4			
81M/81O	0.4	0.2	0.9	0.5	0.2	0.3	3.2	0.0	5.9	0.0	0.4			
81D/81M	0.4	0.1	0.9	0.5	0.0	0.2	0.1	-0.0		0.6	0.2			
	RATE OF INCREASE OVER 12 MONTHS				(T/T-12)				TAUX DE CROISSANCE SUR 12 MOIS					
80/79N	12.8	1.6	12.5	23.6	11.6	5.4	2.0	12.7	26.5	5.3	18.6			
80/79D	12.7	1.7	12.6	23.2	10.1	5.5	5.2	12.5		5.3	16.7			
81/80J	12.5	1.8	12.7	22.6	8.7	5.7	5.2	11.7		6.0	9.3			
81/80F	12.9	1.9	13.5	22.3	4.5	6.1	6.7	14.1	41.3	5.3	10.5			
81/80M	13.2	2.0	14.7	22.0	2.6	7.1	10.7	14.9		5.3	10.3			
81/80A	13.4	3.4	14.8	17.2	3.6	7.3	11.9	19.6		6.5	12.7			
81/80M	13.3	3.5	14.3	17.1	5.2	7.2	12.2	19.1	21.4	6.5	19.4			
81/80J	13.4	4.0	14.4	16.9	5.4	7.2	12.6	18.9		6.5	19.5			
81/80J	12.4	4.1	11.9	15.2	5.4	9.4	12.6	18.7		3.8	19.2			
81/80A	13.2	4.4	14.4	13.8	5.7	10.5	12.1	20.2	27.7	4.5	17.1			
81/80S	13.5	4.6	14.8	13.4	5.9	11.5	11.6	21.5		5.1	16.4			
81/80O	15.9	4.6	15.0	21.7	5.9	11.4	11.7	22.5		5.7	16.8			
81/80N	14.2	4.7	15.2	14.6	5.8	11.3	15.0	22.5	33.3	5.0	17.1			
81/80D	14.3	4.6	15.6	14.5	5.6	11.1	11.5	22.6		5.7	17.0			

D

CONSUMER PRICES

CLOTHING AND FOOTWEAR(INCL, REPAIRS)

PRIX A LA CONSOMMATION

HABILEMENT ET CHAUSSURES(Y COMPRIS REPARATION)

D

	EUR9	BR DEUTSCH LAND	FRANCE	ITALIA	NEDER- LAND	BELGIQUE BELGIE	LUXEM- BOURG	UNITED KINGDOM	IRELAND	DANMARK	ELLAS	EUR10	ESPAÑA	USA	
	PRICE INDICES								INDICES DE PRIX						
	1975 = 100														
1977 0	119.7	108.4	117.5	142.3	114.2	112.5	111.2	125.5	127.2	115.0	128.0	:	149.8	108.4	
1978 0	130.1	113.1	129.6	163.4	121.3	119.6	121.0	136.4	142.1	126.0	146.0	:	184.1	112.2	
1979 0	141.3	118.1	143.8	186.1	126.0	124.3	128.5	149.5	156.6	136.0	178.7	:	225.4	117.1	
1980 0	156.7	124.9	160.0	224.7	134.4	127.5	138.2	164.3	179.7	143.9	212.1	:	271.6	125.4	
1981 0	168.9	130.3	175.3	264.0	138.6	133.2	148.2	166.8	205.6	152.1	257.7	:	308.5	131.3	
1980 N	163.0	127.4	166.8	243.4	141.9	129.7	142.1	167.1	188.9	148.0	239.1	:	289.6	129.9	
1980 D	163.3	127.6	167.9	245.1	141.1	130.2	144.0	166.5	147.0	147.0	239.7	:	292.3	129.2	
1981 J	163.1	128.2	168.5	246.6	129.9	130.6	144.1	166.1	142.0	142.0	225.4	:	293.2	127.3	
1981 F	164.3	129.0	169.4	248.8	134.4	131.1	144.6	165.7	196.6	149.0	213.5	:	295.2	127.9	
1981 M	165.8	129.6	170.9	252.9	138.1	131.9	144.8	166.2	152.0	152.0	237.8	:	298.6	130.1	
1981 A	167.3	130.0	172.5	257.7	141.5	131.9	146.8	166.2	153.0	153.0	243.8	:	302.6	131.0	
1981 M	168.1	130.6	173.7	260.0	141.9	132.2	148.2	166.2	201.9	153.0	247.2	:	304.8	131.0	
1981 J	168.3	130.8	174.6	261.3	139.5	132.6	148.9	165.8	155.0	155.0	268.3	:	307.1	130.6	
1981 J	167.9	131.0	175.3	262.2	127.6	132.7	148.9	165.7	150.0	150.0	264.5	:	308.0	129.8	
1981 A	168.5	131.3	175.8	262.7	128.7	132.8	149.2	166.9	207.9	150.0	242.7	:	308.9	131.7	
1981 S	170.8	132.3	177.2	268.1	139.6	133.3	149.4	167.7	154.0	154.0	264.2	:	312.9	134.0	
1981 O	173.9	133.0	179.6	278.0	146.8	134.5	150.8	168.8	155.0	155.0	288.2	:	318.9	134.6	
1981 N	172.1	123.9	181.9	283.2	147.9	136.5	151.2	168.2	215.8	156.0	296.7	:	324.5	134.6	
1981 D	176.1	134.1	183.1	286.1	147.0	138.2	151.4	167.7		156.0	300.7	:	327.2	133.9	
	RATE OF INCREASE OVER ONE MONTH (IRELAND 3 MONTHS) (T/T-1)								TAUX DE CROISSANCE SUR UN MOIS (IRLANDE 3 MOIS)						
80N/80O	0.9	0.5	1.3	1.7	0.9	0.6	0.4	0.2	3.7	0.0	1.5	:	2.0	0.5	
80D/80N	0.2	0.2	0.7	0.7	-0.6	0.4	1.3	-0.4		-0.7	0.2	:	0.9	-0.5	
81J/80D	-0.1	0.5	0.4	0.6	-7.9	0.3	0.1	-0.2		-3.4	-5.9	:	0.3	-1.5	
81F/81J	0.7	0.6	0.5	0.9	3.5	0.4	0.3	-0.2	4.1	4.9	-5.3	:	0.7	0.5	
81M/81F	0.9	0.5	0.9	1.6	2.8	0.6	0.1	0.3		2.0	11.4	:	1.2	1.7	
81A/81M	0.9	0.3	0.9	1.9	2.5	0.0	1.4	0.0		0.7	2.5	:	1.3	0.7	
81M/81A	0.5	0.5	0.7	0.9	0.3	0.2	1.0	0.0	2.7	0.0	1.4	:	0.7	0.0	
81J/81M	0.2	0.2	0.5	0.5	-1.7	0.3	0.5	-0.2		1.3	8.5	:	0.8	-0.3	
81J/81J	-0.3	0.2	0.4	0.3	-8.5	0.1	0.0	-0.1		-3.2	-1.4	:	0.3	-0.6	
81A/81J	0.3	0.2	0.3	0.2	0.9	0.1	0.2	0.7	3.0	0.0	-8.2	:	0.3	1.5	
81S/81A	1.4	0.8	0.8	2.1	8.5	0.4	0.1	0.5		2.7	8.9	:	1.3	1.8	
81O/81S	1.8	0.5	1.4	3.7	5.2	0.9	0.9	-0.7		0.6	9.1	:	1.9	0.4	
81N/81O	-1.0	-6.8	1.3	1.9	0.7	1.5	0.3	-0.4	3.8	0.6	2.9	:	1.7	0.0	
81D/81N	2.3	8.2	0.7	1.0	-0.6	1.2	0.1	-0.3		0.0	1.4	:	0.9	-0.5	
	RATE OF INCREASE OVER 12 MONTHS (T/T-12)								TAUX DE CROISSANCE SUR 12 MOIS						
80/79N	10.1	5.6	10.8	20.5	5.9	3.3	6.4	6.7	14.2	5.0	18.9	:	17.4	7.6	
80/79D	9.7	5.5	10.6	19.7	5.8	3.4	7.8	6.0		4.3	18.5	:	16.5	6.8	
81/80J	9.4	5.3	10.3	19.3	6.0	3.7	7.9	5.5		2.9	11.3	:	16.3	5.9	
81/80F	8.9	5.2	10.1	19.0	5.5	4.0	7.9	3.7	15.4	4.9	21.0	:	15.8	5.9	
81/80M	8.3	4.9	10.0	18.2	3.0	4.6	7.5	2.3		6.3	26.2	:	15.2	5.2	
81/80A	8.0	4.8	9.7	18.2	4.4	4.6	7.6	1.7		6.3	18.1	:	14.1	5.1	
81/80M	7.9	5.0	9.4	17.9	3.1	4.4	7.1	1.2	13.8	6.3	19.2	:	13.6	5.0	
81/80J	7.7	5.0	9.3	17.6	2.7	4.3	7.4	0.4		7.6	22.4	:	13.4	4.9	
81/80J	7.4	5.0	9.4	17.4	0.4	4.2	7.4	-0.1		7.1	23.9	:	13.4	4.8	
81/80A	7.4	4.8	9.3	17.3	-0.7	3.8	7.3	0.7	14.1	4.9	19.8	:	13.2	4.9	
81/80S	7.3	4.8	9.3	16.2	2.0	4.0	7.3	0.6		5.5	23.1	:	12.7	4.7	
81/80O	7.6	4.9	9.1	16.2	4.4	4.3	6.5	1.3		4.7	22.4	:	12.3	4.1	
81/80N	5.6	-2.7	9.1	16.4	4.2	5.2	6.4	0.7	14.2	5.4	24.1	:	12.0	3.6	
81/80D	7.8	5.1	9.1	16.7	4.2	6.1	5.1	0.7		6.1	25.5	:	12.0	3.6	

7

CONSUMER PRICES

PRIX A LA CONSOMMATION

RENT, FUEL AND POWER

E

LOYER, COMBUSTIBLES ET ENERGIE

	EUR9	BR DEUTSCH LAND	FRANCE	ITALIA	NEDER- LAND	BELGIQUE BELGIE	LUXEM- BOURG	UNITED KINGDOM	IRELAND	DANMARK	ELLAS	EUR10	ESPANA	USA
	PRICE INDICES				1975 = 100				INDICES DE PRIX					
1977 0	122.4	108.4	123.3	129.2	119.7	114.5	116.8	133.7	132.5	123.0	124.1	...	135.5	111.8
1978 0	130.7	111.5	133.9	140.9	127.4	122.8	120.0	143.5	135.6	134.0	139.6	...	162.2	121.6
1979 0	149.5	120.2	152.2	173.6	136.5	137.0	129.2	167.8	152.8	155.0	165.0	...	192.2	136.5
1980 0	181.1	128.0	183.7	232.4	151.1	152.6	142.0	214.3	206.0	182.3	212.9	...	233.8	157.9
1981 0	210.5	137.6	215.5	280.4	170.5	168.4	156.8	255.6	254.4	209.7	270.7	...	275.9	176.0
1980 N	191.0	130.3	191.0	250.4	156.7	159.9	144.7	231.3	223.5	191.0	235.5	...	242.2	164.1
1980 D	192.8	131.7	195.1	251.0	157.1	160.3	147.6	232.4	...	193.0	236.3	...	246.4	166.0
1981 J	195.8	132.8	200.1	259.0	164.2	161.0	150.6	232.0	...	196.0	252.9	...	259.3	167.3
1981 F	196.9	133.9	202.0	260.5	164.5	163.1	151.9	232.2	233.3	197.0	258.4	...	261.3	168.4
1981 M	198.5	135.5	203.3	264.2	165.4	165.1	153.4	232.9	...	201.0	260.7	...	267.8	169.4
1981 A	205.0	135.6	207.6	268.8	165.6	165.0	153.9	251.8	...	202.0	264.4	...	272.7	170.7
1981 M	206.9	135.6	208.1	273.8	166.3	164.9	154.6	255.4	246.2	209.0	269.4	...	274.4	173.0
1981 J	209.6	136.0	210.4	281.5	166.5	166.7	155.0	258.4	...	212.0	270.6	...	275.2	175.2
1981 J	214.3	137.6	222.2	285.7	174.3	169.5	157.2	259.9	...	214.0	273.6	...	279.7	178.1
1981 A	215.9	139.7	223.8	287.1	174.7	170.3	159.0	261.5	260.9	215.0	273.9	...	280.5	179.7
1981 S	216.7	140.5	224.4	288.3	175.6	172.3	162.4	262.3	...	215.0	278.5	...	281.6	182.1
1981 O	219.9	140.7	227.5	294.6	175.9	172.2	159.9	268.0	...	213.0	279.8	...	283.3	182.4
1981 N	222.8	141.6	228.1	299.0	176.5	174.7	160.7	274.6	277.3	220.0	281.6	...	285.2	182.0
1981 D	224.3	141.9	228.4	302.7	176.3	175.8	163.3	277.6	...	222.0	284.4	...	290.2	183.0
	RATE OF INCREASE OVER ONE MONTH (IRELAND 3 MONTHS) (T/T-1) TAUX DE CROISSANCE SUR UN MOIS (IRLANDE 3 MOIS)													
80N/80O	1.0	1.0	0.0	0.8	0.3	1.8	1.5	1.8	3.9	2.1	2.2	...	0.6	1.0
80D/80N	0.9	1.1	2.1	0.2	0.3	0.3	2.0	-0.5	...	1.0	0.3	...	1.7	1.1
81J/80D	1.6	0.8	2.6	3.2	4.5	0.4	2.0	-0.2	...	1.6	7.0	...	5.3	0.8
81F/81J	0.6	0.8	0.9	0.6	0.2	1.3	0.9	0.1	4.4	0.5	2.2	...	0.8	0.6
81M/81F	0.8	1.2	0.6	1.4	0.5	1.2	1.0	0.3	...	2.0	0.9	...	2.5	0.6
81A/81M	3.3	0.1	2.1	1.7	0.1	-0.1	0.3	8.1	...	3.5	1.4	...	1.8	0.8
81M/81A	0.9	0.0	0.2	1.9	0.4	-0.1	0.5	1.4	5.5	3.5	1.9	...	0.6	1.3
81J/81M	1.3	0.3	1.1	2.8	0.1	1.1	0.3	1.2	...	1.4	0.5	...	0.3	1.3
81J/81J	2.3	1.2	5.6	1.5	4.7	1.7	1.4	0.6	...	0.9	1.1	...	1.6	1.6
81A/81J	0.7	1.5	0.7	0.5	0.2	0.5	1.1	0.6	6.0	0.5	0.1	...	0.3	0.9
81S/81A	0.4	0.6	0.3	0.4	0.5	1.2	2.1	0.3	...	0.0	1.7	...	0.4	1.3
81D/81S	1.4	0.1	1.4	2.2	0.2	-0.1	-1.5	2.2	...	-0.9	0.5	...	0.6	0.2
81N/81D	1.3	0.6	0.3	1.5	0.3	1.5	0.5	2.5	6.3	3.3	0.7	...	0.7	-0.2
81D/81N	0.7	0.2	0.1	1.2	-0.1	0.6	1.6	1.1	...	0.9	1.0	...	1.7	0.6
	RATE OF INCREASE OVER 12 MONTHS (T/T-12) TAUX DE CROISSANCE SUR 12 MOIS													
80/79N	20.3	5.8	19.1	29.3	11.4	12.8	8.5	28.9	31.0	13.7	31.8	...	17.1	13.7
80/79D	20.7	6.3	20.2	29.4	11.5	12.9	10.1	28.8	...	13.5	31.7	...	18.5	13.7
81/80J	16.7	6.1	16.2	21.1	13.6	9.9	10.7	22.8	...	14.0	36.5	...	17.8	12.9
81/80F	16.1	6.4	16.0	20.4	13.4	10.0	9.2	21.2	28.0	13.9	33.8	...	17.0	12.1
81/80M	16.2	7.2	15.2	21.8	13.5	11.0	9.8	20.3	...	14.9	33.6	...	19.3	11.0
81/80A	16.0	6.9	15.5	20.5	13.3	9.8	9.1	20.4	...	14.8	34.5	...	19.7	10.4
81/80M	15.7	5.7	14.6	22.0	12.7	9.1	8.7	20.0	21.2	14.8	36.2	...	19.4	10.2
81/80J	16.2	6.3	15.4	24.8	13.1	10.3	8.5	18.6	...	16.5	28.4	...	17.4	9.6
81/80J	16.5	7.3	20.1	21.0	11.9	11.2	9.6	17.9	...	15.1	23.4	...	17.5	12.0
81/80A	16.7	9.2	20.1	19.4	12.3	12.0	11.0	17.9	21.3	16.2	21.9	...	17.5	12.8
81/80S	16.4	9.7	19.7	19.3	12.3	12.8	14.1	17.1	...	16.2	22.2	...	17.5	13.4
81/80O	16.2	9.1	19.1	18.6	12.5	9.6	12.1	17.9	...	13.9	21.4	...	17.6	12.2
81/80N	16.6	8.7	19.4	19.4	12.6	9.3	11.1	18.7	24.1	15.2	19.6	...	17.8	10.8
81/80D	16.3	7.7	17.1	20.6	12.2	9.7	10.6	19.4	...	15.0	20.4	...	17.8	10.3

00



## CONSUMER PRICES

## PRIX A LA CONSOMMATION

## HOUSEHOLD GOODS AND SERVICES

F

## BIENS ET SERVICES DE MENAGE

	EUR9	BR DEUTSCH LAND	FRANCE	ITALIA	NEDER- LAND	BELGIQUE BELGIE	LUXEM- BOURG	UNITED KINGDOM	IRELAND	DANMARK	ELLAS	EUR10	ESPAÑA	USA	
	PRICE INDICES				1975 = 100				INDICES DE PRIX						
1977 Q	115.7	106.2	112.9	135.4	111.3	112.3	108.3	131.5	129.6	118.0	121.7	:	145.2	105.9	
1978 Q	123.9	110.1	122.5	149.3	114.5	117.0	112.5	145.9	143.4	131.0	132.1	:	180.6	112.4	
1979 Q	133.7	113.7	135.2	168.3	117.6	121.7	118.1	164.2	157.8	139.7	148.8	:	216.0	120.4	
1980 Q	148.7	120.5	152.3	203.1	124.5	126.4	125.8	188.1	185.9	154.9	185.9	:	251.1	129.9	
1981 Q	162.5	127.9	170.4	241.5	131.0	131.8	134.2	199.6	220.3	172.6	228.0	:	281.4	140.0	
1980 N	154.3	123.2	159.2	219.9	127.2	128.3	129.4	194.0	198.5	161.0	204.9	:	263.3	133.5	
1980 D	154.9	123.4	160.7	220.8	127.4	129.0	129.7	194.2		161.0	206.2	:	264.3	133.8	
1981 J	155.8	124.3	161.7	222.6	129.2	129.7	130.3	193.7		162.0	204.4	:	266.5	134.5	
1981 F	157.7	125.1	163.2	229.6	129.9	130.4	131.2	196.4	208.4	163.0	204.8	:	269.6	135.9	
1981 M	158.8	125.9	164.9	231.4	130.5	131.0	132.1	197.1		167.0	219.6	:	272.5	137.2	
1981 A	160.1	126.6	166.5	233.5	131.2	131.0	132.8	198.8		170.0	223.0	:	276.1	138.6	
1981 M	161.5	127.4	167.9	240.2	131.7	131.2	133.7	199.3	216.7	172.0	226.3	:	278.3	139.2	
1981 J	162.2	127.7	169.4	241.6	131.9	131.5	133.9	199.3		173.0	228.5	:	279.5	139.8	
1981 J	163.0	128.4	171.0	242.4	132.2	131.7	134.8	199.2		173.0	230.0	:	282.0	140.7	
1981 A	163.9	128.8	172.3	245.3	131.7	131.7	135.2	200.6	224.0	175.0	221.5	:	286.7	141.0	
1981 S	165.2	129.4	174.3	247.3	132.3	132.2	135.9	202.1		177.0	238.1	:	286.8	142.0	
1981 O	166.2	130.0	176.1	249.4	133.1	132.9	136.4	202.2		179.0	242.0	:	290.4	142.7	
1981 N	167.9	130.7	177.9	256.9	133.6	133.9	136.7	203.1	232.0	179.0	246.8	:	293.3	143.7	
1981 D	168.6	131.0	179.4	258.2	134.0	134.9	137.1	203.0		181.0	251.2	:	295.4	144.0	
	RATE OF INCREASE OVER ONE MONTH (IRELAND 3 MONTHS) (T/T-1)				TAUX DE CROISSANCE SUR UN MOIS (IRLANDE 3 MOIS)										
80N/80Q	1.1	0.5	1.0	4.3	0.4	0.5	0.7	0.7	4.4	0.6	2.1	:	1.2	0.0	
80D/80N	0.4	0.2	0.9	0.4	0.2	0.5	0.2	0.1		0.0	0.6	:	0.4	0.3	
81J/80D	0.6	0.7	0.6	0.8	1.4	0.5	0.5	-0.3		0.6	-0.9	:	0.8	0.5	
81F/81J	1.2	0.6	0.9	3.1	0.5	0.5	0.7	1.4	5.0	0.6	0.2	:	1.1	1.1	
81M/81F	0.7	0.6	1.0	0.8	0.5	0.5	0.7	0.4		2.5	7.2	:	1.1	0.9	
81A/81M	0.8	0.6	1.0	0.9	0.5	0.0	0.5	0.9		1.8	1.5	:	1.3	1.1	
81M/81A	0.9	0.6	0.8	2.9	0.4	0.2	0.7	0.3	4.0	1.2	1.5	:	0.8	0.4	
81J/81M	0.4	0.2	0.9	0.6	0.2	0.2	0.1	0.0		0.6	1.0	:	0.5	0.5	
81J/81J	0.5	0.5	0.9	0.3	0.2	0.2	0.7	-0.1		0.0	0.7	:	0.9	0.6	
81A/81J	0.6	0.3	0.8	1.2	-0.4	0.0	0.3	0.7	3.4	1.2	-3.7	:	1.7	0.2	
81S/81A	0.8	0.5	1.2	0.8	0.5	0.4	0.5	0.7		1.1	7.5	:	0.0	0.7	
81O/81S	0.6	0.5	1.0	0.8	0.6	0.5	0.4	0.0		1.1	1.6	:	1.3	0.5	
81N/81O	1.0	0.5	1.0	3.0	0.4	0.8	0.2	0.4	3.6	0.0	2.0	:	1.0	0.7	
81D/81N	0.4	0.2	0.8	0.5	0.3	0.7	0.3	-0.0		1.1	1.8	:	0.7	0.2	
	RATE OF INCREASE OVER 12 MONTHS				(T/T-12)				TAUX DE CROISSANCE SUR 12 MOIS						
80/79N	10.7	6.3	13.0	21.6	6.5	3.6	7.2	10.2	19.7	11.0	28.1	:	14.8	8.1	
80/79D	10.6	6.3	13.1	21.3	6.5	3.9	6.7	9.3		11.0	28.1	:	14.0	8.1	
81/80J	10.3	6.2	12.4	21.3	6.8	4.3	6.8	8.5		10.2	25.1	:	13.3	8.0	
81/80F	10.0	6.1	12.5	20.1	6.6	4.7	6.9	7.9	21.7	8.7	22.9	:	12.8	8.0	
81/80M	9.8	6.2	12.6	20.0	6.6	4.9	6.9	6.8		10.6	27.5	:	12.6	7.7	
81/80A	9.7	6.3	12.1	20.1	6.2	4.9	7.0	6.8		11.8	23.9	:	12.5	8.0	
81/80M	9.6	6.3	11.9	19.2	6.2	4.5	7.2	6.4	18.0	13.2	22.0	:	12.1	7.8	
81/80J	9.4	6.2	11.6	19.1	6.3	4.2	7.1	6.1		13.1	21.2	:	11.3	7.6	
81/80J	9.1	6.3	11.4	18.9	5.8	3.9	7.0	5.6		10.9	21.4	:	11.3	7.4	
81/80A	9.0	6.0	11.5	18.5	5.1	3.8	6.5	5.6	17.8	11.5	23.1	:	12.7	6.9	
81/80S	9.0	5.9	11.8	18.3	5.0	3.8	6.6	5.6		11.3	22.8	:	11.6	7.2	
81/80Q	8.9	6.0	11.7	18.3	5.1	4.2	6.1	4.9		11.9	20.7	:	11.7	6.9	
81/80N	8.8	6.1	11.7	16.8	5.0	4.4	5.6	4.7	16.9	11.2	20.4	:	11.4	7.7	
81/80D	8.8	6.2	11.6	16.9	5.2	4.6	5.7	4.5		12.4	21.8	:	11.7	7.6	

6

## CONSUMER PRICES

## TRANSPORT AND COMMUNICATIONS

G

## PRIX A LA CONSOMMATION

## TRANSPORT ET COMMUNICATIONS

	EUR9	BR DEUTSCH LAND	FRANCE	ITALIA	NEDER- LAND	BELGIQUE BELGIE	LUXEM- BOURG	UNITED KINGDOM	IRELAND	DANMARK	ELLAS	EUR10	ESPAÑA	USA	
	PRICE INDICES								INDICES DE PRIX						
	1975 = 100														
1977	124.2	106.5	121.9	152.2	113.7	116.7	115.7	131.4	140.1	116.0	119.9	:	149.6	117.7	
1978	133.3	109.6	134.0	165.4	116.5	122.6	119.3	142.8	149.5	127.0	127.4	:	174.9	123.2	
1979	149.0	114.7	151.6	191.0	122.2	129.8	125.9	165.6	171.0	141.0	158.7	:	204.2	140.8	
1980	172.9	122.0	174.8	237.6	132.2	143.9	137.7	197.9	209.6	162.3	206.5	:	253.4	165.8	
1981	195.1	130.6	198.2	281.0	143.7	156.6	149.9	222.8	260.3	183.0	:	:	295.9	185.9	
1980	178.5	122.9	181.4	248.6	134.9	148.4	140.3	204.5	218.7	168.0	203.6	:	264.2	172.0	
1980	181.5	123.8	183.8	258.8	135.7	149.5	142.0	206.7		169.0	205.5	:	270.1	173.4	
1981	183.2	124.7	186.6	261.7	137.7	150.3	143.7	207.7		169.0	207.4	:	271.4	175.8	
1981	185.7	125.7	188.6	267.0	138.6	152.4	144.8	210.6	233.1	172.0	212.6	:	272.4	179.9	
1981	188.8	126.7	189.7	270.4	140.1	152.7	146.9	218.6		177.0	213.0	:	285.6	181.6	
1981	190.7	128.6	192.1	272.7	140.2	152.8	147.6	220.2		179.0	219.8	:	290.4	182.8	
1981	192.3	130.0	193.2	276.7	141.4	153.5	148.5	220.8	247.7	184.0	221.1	:	294.7	184.5	
1981	194.0	131.2	195.7	278.4	142.9	155.5	149.6	222.4		185.0	221.6	:	299.8	185.9	
1981	196.3	132.3	198.9	280.1	145.2	159.5	149.9	224.3		188.0	222.4	:	302.7	187.6	
1981	199.8	133.4	202.8	286.3	146.7	161.2	152.5	229.7	271.4	188.0	223.7	:	303.9	188.4	
1981	200.8	134.4	205.6	287.5	147.8	161.0	155.2	229.1		188.0	224.5	:	304.7	189.4	
1981	201.2	133.8	206.6	291.1	148.7	160.2	152.7	227.6		188.0	226.7	:	306.4	190.7	
1981	203.7	133.2	208.7	299.2	148.0	160.4	153.1	231.3	288.8	189.0	227.3	:	307.4	192.0	
1981	204.2	133.3	209.7	301.3	147.3	160.0	154.3	231.3		189.0	232.9	:	311.8	192.4	
	RATE OF INCREASE OVER ONE MONTH (IRELAND 3 MONTHS) (T/T-1)								TAUX DE CROISSANCE SUR UN MOIS (IRLANDE 3 MOIS)						
80N/80D	1.4	0.1	0.5	3.4	0.7	1.4	1.2	1.4	0.6	1.2	0.2	:	0.6	1.1	
80D/80N	1.7	0.7	1.3	4.1	0.6	0.7	1.2	1.1		0.6	0.9	:	2.2	0.8	
81J/80D	1.0	0.7	1.5	1.1	1.5	0.5	1.2	0.5		0.0	0.9	:	0.4	1.4	
81F/81J	1.3	0.8	1.1	2.0	0.7	1.4	0.8	1.4	6.6	1.8	2.5	:	0.4	2.3	
81M/81F	1.7	0.8	0.6	1.3	1.1	0.2	1.5	3.8		2.9	0.2	:	4.8	1.0	
81A/81M	1.0	1.5	1.3	0.9	0.1	0.1	0.5	0.7		1.1	3.2	:	1.7	0.7	
81M/81A	0.8	1.1	0.6	1.5	0.9	0.5	0.6	0.3	6.3	2.8	0.6	:	1.5	0.9	
81J/81M	0.9	0.9	1.3	0.6	1.1	1.3	0.7	0.7		0.5	0.2	:	1.7	0.8	
81J/81J	1.1	0.8	1.6	0.6	1.6	2.6	0.2	0.9		1.6	0.4	:	1.0	1.0	
81A/81J	1.8	0.8	2.0	2.2	1.0	1.1	1.7	2.4	9.6	0.0	0.6	:	0.4	0.4	
81S/81A	0.5	0.7	1.4	0.4	0.7	-0.1	1.8	-0.3		0.0	0.3	:	0.3	0.5	
81O/81S	0.2	-0.4	0.5	1.3	0.6	-0.5	-1.6	-0.7		0.0	1.0	:	0.6	0.7	
81N/81O	1.2	-0.4	1.0	2.8	-0.5	0.1	0.3	1.6	6.4	0.5	0.3	:	0.3	0.7	
81D/81N	0.3	0.1	0.5	0.7	-0.5	-0.2	0.8	0.0		0.0	2.5	:	1.5	0.2	
	RATE OF INCREASE OVER 12 MONTHS								TAUX DE CROISSANCE SUR 12 MOIS						
	(T/T-12)														
80/79N	13.3	5.0	13.8	20.5	8.0	10.7	8.7	14.4	18.3	12.0	15.3	:	18.9	15.2	
80/79D	14.0	5.5	14.4	20.9	8.2	10.5	7.7	15.5		12.7	14.8	:	20.1	14.7	
81/80J	12.6	6.2	13.6	18.0	7.7	8.7	7.8	13.1		11.2	16.6	:	13.6	13.4	
81/80F	12.3	5.6	13.3	18.9	7.4	7.7	7.2	11.8	21.5	11.7	16.5	:	13.7	13.1	
81/80M	12.6	4.6	12.2	19.1	7.8	7.7	8.1	14.6		12.0	15.5	:	18.8	12.2	
81/80A	11.7	5.2	12.3	18.2	6.9	7.8	7.8	11.7		11.2	16.3	:	20.5	11.5	
81/80M	11.8	6.0	11.9	18.5	6.6	7.9	7.5	11.2	17.7	13.6	15.7	:	19.3	11.6	
81/80J	12.0	6.8	12.9	17.7	7.8	8.7	9.2	11.0		14.9	12.3	:	18.3	12.1	
81/80J	11.9	7.5	12.0	15.7	9.3	9.8	8.2	11.6		13.9	11.8	:	16.7	12.6	
81/80A	13.6	8.2	13.6	17.9	10.4	11.6	10.3	14.0	24.8	13.3	11.7	:	16.2	12.3	
81/80S	14.0	9.4	14.7	17.7	11.4	11.3	12.3	14.1		13.9	11.6	:	16.2	12.0	
81/80D	14.3	9.0	14.5	21.1	11.0	9.5	10.1	12.9		13.3	11.6	:	16.6	12.1	
81/80N	14.1	8.4	15.0	20.4	9.7	8.1	9.1	13.1	32.1	12.5	11.7	:	16.3	11.6	
81/80D	12.5	7.7	14.1	16.4	8.5	7.0	8.7	11.9		11.8	13.3	:	15.4	11.0	

	EUR9	BR DEUTSCH LAND	FRANCE	ITALIA	NEDER- LAND	BELGIQUE BELGIE	LUXEM- BOURG	UNITED KINGDOM	IRELAND	DANMARK	ELLAS	EUR10	ESPANA	USA
	PRICE INDICES								INDICES DE PRIX					
	1975 = 100													
1977 Q	116.7	107.1	114.2	128.3	108.1	110.5	116.5	127.8	135.5	115.0	133.6	..	151.6	..
1978 Q	124.1	108.9	123.8	141.1	111.5	114.6	119.5	139.3	150.6	128.0	153.6	..	178.6	..
1979 Q	133.1	110.1	133.7	159.7	113.7	117.4	124.9	155.1	168.7	138.5	176.1	..	206.6	..
1980 Q	146.7	113.0	146.6	189.5	117.6	120.7	133.5	179.1	195.4	150.0	201.7	..	231.1	..
1981 Q	160.5	117.8	161.8	228.1	122.5	126.0	143.6	196.0	231.8	165.3	265.2	..	264.0	..
1980 H	151.8	114.3	151.6	204.9	118.7	123.5	137.3	186.1	208.4	156.0	239.5	..	243.0	..
1980 D	152.7	115.0	152.5	208.8	118.3	122.8	138.0	186.5	208.4	156.0	240.5	..	244.8	..
1981 J	155.6	116.8	153.9	215.5	119.8	123.6	140.1	190.8	215.3	157.0	245.7	..	246.8	..
1981 F	156.5	117.3	154.9	219.8	120.0	124.1	140.5	191.3	215.3	158.0	247.5	..	251.7	..
1981 M	157.3	117.7	156.3	221.2	120.6	124.5	141.0	191.7	215.3	160.0	250.0	..	253.2	..
1981 A	158.1	117.2	157.4	221.6	121.1	123.9	141.6	194.0	215.3	162.0	251.5	..	258.0	..
1981 M	159.1	117.7	158.8	224.3	121.4	123.8	142.3	194.9	225.4	164.0	254.8	..	261.0	..
1981 J	159.2	117.3	160.7	225.0	121.9	124.9	143.6	193.8	225.4	165.0	258.6	..	262.0	..
1981 J	160.2	116.8	161.8	226.7	123.9	127.0	144.1	196.0	225.4	166.0	261.3	..	262.7	..
1981 A	160.6	116.3	162.7	229.0	124.1	126.6	144.6	196.6	232.6	167.0	259.1	..	263.2	..
1981 S	162.3	117.2	164.7	233.0	124.2	127.1	146.0	198.5	232.6	168.0	279.3	..	270.7	..
1981 O	163.8	118.5	166.4	235.4	124.3	127.8	145.7	199.8	232.6	171.0	290.9	..	277.1	..
1981 N	165.3	119.9	168.4	240.3	124.6	128.9	146.4	200.3	232.6	172.0	291.5	..	280.1	..
1981 D	166.4	120.7	169.7	244.8	110.4	129.2	147.7	204.1	232.6	173.0	292.2	..	281.3	..
	RATE OF INCREASE OVER ONE MONTH (IRELAND 3 MONTHS) (T/T-1)								TAUX DE CROISSANCE SUR UN MOIS (IRLANDE 3 MOIS)					
80M/80Q	1.1	1.0	0.9	2.5	0.1	0.7	1.0	0.9	5.6	0.0	1.1	..	1.0	..
80D/80M	0.6	0.6	0.6	1.9	-0.3	-0.6	0.5	0.2	5.6	0.0	0.4	..	0.7	..
81J/80D	1.9	1.6	0.9	3.2	1.3	0.7	1.5	2.3	3.3	0.6	2.2	..	0.8	..
81F/81J	0.6	0.4	0.6	2.0	0.2	0.4	0.3	0.3	3.3	0.6	0.7	..	2.0	..
81M/81F	0.5	0.3	0.9	0.6	0.5	0.3	0.4	0.2	3.3	1.3	1.0	..	0.6	..
81A/81M	0.5	-0.4	0.7	0.2	0.4	-0.5	0.4	1.2	3.3	1.3	0.6	..	1.9	..
81M/81A	0.6	0.4	0.9	1.2	0.2	-0.1	0.5	0.5	4.7	1.2	1.3	..	1.2	..
81J/81M	0.0	-0.3	1.2	0.3	0.4	0.9	0.9	-0.6	4.7	0.6	1.5	..	0.4	..
81J/81J	0.7	-0.4	0.7	0.8	1.6	1.7	0.3	1.1	4.7	0.6	1.0	..	0.3	..
81A/81J	0.3	-0.4	0.6	1.0	0.2	-0.3	0.3	0.3	3.2	0.6	-0.8	..	0.2	..
81S/81A	1.0	0.8	1.2	1.7	0.1	0.4	1.0	1.0	3.2	0.6	7.8	..	2.8	..
81O/81S	1.0	1.1	1.0	1.0	0.1	0.6	-0.2	0.7	3.2	1.8	4.1	..	2.4	..
81N/81O	0.9	1.2	1.2	2.1	0.2	0.9	0.5	0.3	9.1	0.6	0.2	..	1.1	..
81D/81N	0.7	0.7	0.8	1.9	-11.4	0.2	0.9	1.9	9.1	0.6	0.2	..	0.5	..
	RATE OF INCREASE OVER 12 MONTHS (T/T-12)								TAUX DE CROISSANCE SUR 12 MOIS					
80/79M	10.8	3.8	10.7	20.9	3.6	4.9	7.9	14.1	17.7	9.9	25.6	..	12.0	..
80/79D	10.2	3.6	10.6	21.5	3.4	4.6	7.9	12.1	17.7	9.9	25.8	..	11.7	..
81/80J	10.5	4.1	10.4	23.6	3.4	4.2	8.2	12.0	17.2	9.8	27.2	..	11.3	..
81/80F	10.4	4.3	10.3	24.0	3.2	4.4	7.9	11.4	17.2	9.7	29.4	..	12.9	..
81/80M	10.1	4.1	10.2	22.9	3.3	4.6	7.7	11.1	17.2	10.3	29.8	..	13.0	..
81/80A	9.1	3.5	10.0	20.8	3.2	4.1	7.4	9.2	17.3	11.0	27.1	..	14.4	..
81/80M	9.2	4.1	10.0	21.2	3.5	3.6	7.3	9.1	17.3	10.1	25.9	..	14.8	..
81/80J	8.9	3.6	10.6	20.9	3.9	4.3	8.1	8.0	17.3	10.7	23.2	..	14.7	..
81/80J	9.4	3.8	10.5	21.2	5.0	4.6	7.9	8.9	17.9	9.9	20.4	..	14.7	..
81/80A	9.4	3.8	10.4	21.2	4.7	4.5	7.8	9.1	17.9	9.9	19.8	..	14.5	..
81/80S	9.2	4.5	10.8	17.8	4.8	4.3	8.6	9.0	17.9	9.8	21.3	..	14.6	..
81/80O	9.0	4.7	10.8	17.8	4.8	4.2	7.1	8.3	17.9	9.6	22.8	..	15.2	..
81/80N	8.9	4.9	11.1	17.3	5.0	4.4	6.6	7.6	21.8	10.3	21.7	..	15.2	..
81/80D	9.0	5.0	11.3	17.2	-6.7	5.2	7.0	9.4	21.8	10.9	21.5	..	14.9	..

CONSUMER PRICES

PRIX A LA CONSOMMATION

OTHER GOODS AND SERVICES

J

AUTRES BIENS ET SERVICES

	EUR9	BR DEUTSCH LAND	FRANCE	ITALIA	NEDER- LAND	BELGIE BELGIE	LUXEM- BOURG	UNITED KINGDOM	IRELAND	DANMARK	ELLAS	EUR10	ESPAÑA	USA
	PRICE INDICES 1975 = 100								INDICES DE PRIX					
1977	125.7	108.0	119.8	136.6	118.6	121.6	120.0	138.7	138.8	122.0	128.4	:	161.2	117.3
1978	137.3	112.1	131.8	155.5	126.7	129.6	127.5	152.5	151.6	138.0	154.8	:	193.4	127.6
1979	153.8	117.5	148.6	184.0	134.5	132.9	135.9	174.2	172.7	150.8	199.9	:	239.1	142.5
1980	182.3	124.8	176.8	239.1	145.9	137.8	141.8	211.4	210.7	168.4	275.3	:	292.6	165.9
1981	207.1	132.2	203.6	290.3	154.9	145.2	153.0	238.1	262.4	184.4	343.4	:	336.3	188.7
1980 N	191.5	127.4	187.3	258.1	148.6	140.5	145.4	221.3	225.0	174.0	302.8	:	306.1	172.4
1980 D	192.4	128.0	188.7	260.1	148.7	140.8	145.8	221.8		175.0	333.0	:	307.4	174.9
1981 J	195.0	128.5	190.6	266.4	149.0	141.2	146.2	224.3		176.0	328.9	:	310.8	177.0
1981 F	197.5	129.5	192.8	273.1	149.2	141.9	146.9	227.0	244.8	176.0	328.1	:	315.4	178.5
1981 M	201.1	130.0	195.1	278.3	149.4	143.5	149.1	234.3		179.0	329.8	:	320.1	180.0
1981 A	203.6	130.3	198.4	282.7	154.4	144.0	151.0	236.5		180.0	358.4	:	329.5	182.0
1981 M	205.3	130.6	200.8	287.4	155.2	144.1	151.3	237.3	251.5	183.0	332.8	:	334.2	184.6
1981 J	206.8	132.7	202.9	289.6	155.5	144.4	153.7	238.0		184.0	333.9	:	336.6	187.3
1981 J	208.3	133.2	205.4	290.8	156.2	145.6	154.9	239.2		185.0	340.0	:	339.2	190.9
1981 A	209.7	133.6	206.9	294.7	158.6	145.8	155.7	240.2	267.1	186.0	336.7	:	344.4	193.0
1981 S	211.6	133.8	209.6	298.6	157.1	146.9	156.3	242.5		189.0	350.7	:	347.5	196.3
1981 O	214.2	134.3	212.1	303.2	157.9	147.8	156.7	245.2		191.0	348.8	:	348.8	197.0
1981 N	215.7	134.6	213.6	308.6	158.0	148.3	157.0	246.3	286.0	191.0	345.1	:	353.1	198.3
1981 D	216.6	135.2	214.3	310.5	158.2	148.8	157.2	247.2		193.0	387.5	:	355.4	199.0
	RATE OF INCREASE OVER ONE MONTH (IRELAND 3 MONTHS) (T/T-1)								TAUX DE CROISSANCE SUR UN MOIS (IRLANDE 3 MOIS)					
80N/80D	0.7	0.4	1.0	1.7	0.2	0.4	0.4	0.3	4.5	0.0	2.0	:	0.7	1.1
80D/80N	0.5	0.5	0.7	0.8	0.1	0.2	0.3	0.2		0.6	10.0	:	0.4	1.5
81J/80D	1.3	0.4	1.0	2.4	0.2	0.3	0.3	1.1		0.6	-1.2	:	1.1	1.2
81F/81J	1.3	0.8	1.2	2.5	0.1	0.5	0.5	1.2	8.8	0.0	-0.2	:	1.5	0.9
81M/81F	1.8	0.4	1.2	1.9	0.1	1.1	1.5	3.2		1.7	0.5	:	1.5	0.8
81A/81M	1.2	0.2	1.7	1.6	3.3	0.3	1.3	0.9		0.6	8.7	:	2.9	1.1
81M/81A	0.8	0.2	1.2	1.7	0.5	0.1	0.2	0.3	2.7	1.7	-7.1	:	1.4	1.5
81J/81M	0.7	1.6	1.0	0.8	0.2	0.2	1.6	0.3		0.5	0.3	:	0.7	1.4
81J/81J	0.7	0.4	1.2	0.4	0.5	0.8	0.8	0.5		0.5	1.8	:	0.8	1.9
81A/81J	0.7	0.3	0.7	1.3	1.5	0.1	0.5	0.4	6.2	0.5	-1.0	:	1.5	1.1
81S/81A	0.9	0.1	1.3	1.3	-0.9	0.8	0.4	1.0		1.6	4.2	:	0.9	1.7
81O/81S	1.2	0.4	1.2	1.5	0.5	0.6	0.3	1.1		1.1	-0.5	:	0.4	0.4
81N/81O	0.7	0.2	0.7	1.8	0.1	0.3	0.2	0.4	7.1	0.0	-1.1	:	1.2	0.6
81D/81N	0.4	0.4	0.3	0.6	0.1	0.3	0.1	0.4		1.0	12.3	:	0.7	0.4
	RATE OF INCREASE OVER 12 MONTHS (T/T-12)								TAUX DE CROISSANCE SUR 12 MOIS					
80/79N	17.2	6.6	19.0	28.3	8.1	4.8	5.4	17.4	22.5	10.8	38.2	:	19.4	14.8
80/79D	16.8	6.8	18.7	27.0	7.9	4.8	5.5	16.8		11.5	39.3	:	18.2	14.9
81/80J	14.9	6.2	17.5	21.9	6.2	4.8	5.7	14.7		9.3	37.4	:	15.7	14.3
81/80F	14.3	6.3	16.4	21.1	5.7	5.0	5.8	14.1	28.0	8.6	38.2	:	13.6	13.6
81/80M	15.1	6.2	15.2	22.3	4.9	6.0	7.1	16.5		9.8	33.4	:	13.7	12.4
81/80A	14.2	6.1	15.1	23.2	5.4	6.2	8.2	13.9		9.8	33.6	:	14.6	11.7
81/80M	14.2	6.2	15.1	24.3	5.9	6.0	8.1	12.9	19.0	10.2	23.9	:	14.9	11.6
81/80J	13.9	5.7	15.3	23.8	6.0	5.4	9.5	12.5		10.2	23.2	:	14.8	11.0
81/80J	13.4	5.7	15.3	22.0	6.5	4.7	8.8	11.8		10.2	23.1	:	15.0	14.1
81/80A	13.3	5.8	14.9	21.3	7.9	4.5	8.8	11.9	24.1	8.8	22.5	:	15.8	15.4
81/80S	12.5	5.6	14.9	19.6	6.4	5.1	8.8	10.7		8.6	21.5	:	15.3	16.5
81/80D	12.7	5.8	14.4	19.5	6.5	5.6	8.2	11.2		9.8	17.6	:	14.7	15.5
81/80N	12.6	5.7	14.0	19.6	6.3	5.6	8.0	11.3	27.1	9.8	14.0	:	15.4	15.0
81/80D	12.6	5.6	13.6	19.4	6.4	5.7	7.8	11.5		10.3	16.4	:	15.6	13.7

	EUR9	BR DEUTSCH LAND	FRANCE	ITALIA	NEDER- LAND	BELGIE BELGIE	LUXEM- BOURG	UNITED KINGDOM	IRELAND	DANMARK	ELLAS	EUR10	ESPANA	USA
	PRICE INDICES 1975 = 100													
	INDICES DE PRIX													
1977 d	122.9	106.1	123.7	155.1	116.0	110.3	111.0	130.6	134.8	117.5	124.0	..	..	117.4
1978 d	128.9	109.7	134.4	164.2	123.0	112.7	112.8	134.3	135.6	128.1	128.2	..	..	124.8
1979 d	147.0	118.7	155.9	186.1	135.0	126.7	127.2	158.2	157.1	170.8	149.1	..	..	156.2
1980 d	185.9	133.5	196.3	275.2	162.4	156.9	151.8	199.6	217.8	239.3	212.4	..	..	204.5
1981 d	226.8	167.8	234.0	336.4	197.1	187.6	173.1	240.9	285.9	300.0	..	..	..	232.0
1980 N	196.4	137.9	204.3	298.7	168.0	170.3	153.6	212.6	236.0	253.9	242.4	..	..	207.3
1980 D	200.2	140.2	210.1	308.9	170.0	171.7	159.2	213.8	..	260.2	242.4	..	..	209.7
1981 J	206.7	154.8	213.9	305.8	186.3	172.7	163.6	216.1	..	266.2	263.1	..	..	216.1
1981 F	209.7	158.0	217.5	307.8	187.9	177.7	166.1	218.8	256.7	272.9	259.3	..	..	227.1
1981 M	215.6	162.1	219.0	315.6	190.8	179.9	169.2	230.0	..	287.0	259.1	..	..	231.8
1981 A	218.1	164.5	222.3	317.5	190.8	178.6	169.2	233.1	..	289.2	259.8	..	..	232.0
1981 M	220.5	163.5	222.5	330.0	192.8	178.8	169.3	236.2	273.1	297.5	261.9	..	..	232.0
1981 J	225.1	165.0	227.8	340.3	195.1	183.2	168.8	241.4	..	306.4	262.1	..	..	234.4
1981 J	231.0	169.3	240.7	340.9	199.9	192.8	171.9	244.6	..	316.8	264.6	..	..	235.4
1981 A	237.1	174.7	247.2	347.3	202.6	196.3	178.1	253.5	296.2	315.6	264.8	..	..	235.6
1981 S	238.5	177.4	248.6	348.6	204.9	198.7	184.2	253.4	..	312.4	266.2	..	..	236.2
1981 O	237.9	175.0	249.1	348.9	204.9	195.3	177.0	254.1	..	309.4	266.3	..	..	234.9
1981 N	240.8	175.2	249.4	364.9	204.7	198.9	177.5	255.5	317.6	316.0	266.9	..	..	234.5
1981 D	240.7	174.3	249.4	369.7	205.0	198.4	182.4	253.9	..	316.0	272.3	..	..	234.8
	RATE OF INCREASE OVER ONE MONTH (IRELAND 3 MONTHS) (T/T-1) TAUX DE CROISSANCE SUR UN MOIS (IRLANDE 3 MOIS)													
80N/80O	1.9	1.0	1.1	4.1	1.2	4.2	2.6	1.4	2.8	2.0	2.4	..	..	..
80D/80N	1.9	1.7	2.8	3.4	1.2	0.8	3.6	0.6	..	2.5	0.0	..	..	..
81J/80D	3.2	10.4	1.8	-1.0	9.6	0.6	2.8	1.1	..	2.3	8.5	..	..	..
81F/81J	1.5	2.1	1.7	0.7	0.9	2.9	1.5	1.2	8.8	2.5	-1.4	..	..	..
81M/81F	2.8	2.6	0.7	2.5	1.5	1.2	1.9	5.1	..	5.2	-0.1	..	..	..
81A/81M	1.1	1.5	1.5	0.6	0.0	-0.7	0.0	1.3	..	0.8	0.3	..	..	..
81M/81A	1.1	-0.6	0.1	3.9	1.0	0.1	0.1	1.3	6.4	2.9	0.8	..	..	..
81J/81M	2.1	0.9	2.4	3.1	1.2	2.5	-0.3	2.2	..	3.0	0.1	..	..	..
81J/81J	2.6	2.6	5.7	0.2	2.5	5.2	1.8	1.3	..	3.4	1.0	..	..	..
81A/81J	2.6	3.2	2.7	1.9	1.4	1.8	3.6	3.6	8.5	-0.4	0.1	..	..	..
81S/81A	0.6	1.5	0.6	0.4	1.1	1.2	3.4	-0.0	..	-1.0	0.5	..	..	..
81O/81S	-0.2	-1.4	0.2	0.1	0.0	-1.7	-3.9	0.3	..	-1.0	0.0	..	..	..
81N/81O	1.2	0.1	0.1	4.6	-0.1	1.8	0.3	0.6	7.2	2.1	0.2	..	..	..
81D/81N	-0.0	-0.5	0.0	1.3	0.1	-0.3	2.8	-0.6	..	0.0	2.0	..	..	..
	RATE OF INCREASE OVER 12 MONTHS (T/T-12) TAUX DE CROISSANCE SUR 12 MOIS													
80/79N	22.8	12.0	23.0	39.4	20.0	23.9	15.2	20.7	32.6	26.4	43.9	..	..	..
80/79D	24.0	13.3	24.1	43.7	20.6	23.6	16.0	20.6	..	26.6	43.9	..	..	..
81/80J	21.2	23.4	16.6	23.6	22.6	18.3	15.9	20.6	..	25.5	52.4	..	..	..
81/80F	20.7	22.1	16.6	22.7	22.8	17.8	12.3	20.6	37.7	25.2	37.2	..	..	..
81/80M	22.5	24.3	14.9	25.4	22.3	18.4	13.5	25.0	..	25.1	36.8	..	..	..
81/80A	20.9	24.6	16.0	22.4	20.0	16.0	11.0	21.2	..	23.0	37.2	..	..	..
81/80M	20.5	22.7	14.1	26.6	18.3	15.8	8.9	20.1	24.7	24.5	38.3	..	..	..
81/80J	21.3	23.6	16.1	28.5	20.4	18.7	9.3	18.0	..	28.5	23.3	..	..	..
81/80J	21.6	26.2	22.2	18.9	19.0	22.6	10.8	18.5	..	28.1	16.9	..	..	..
81/80A	24.4	30.3	24.6	18.7	22.0	27.6	16.0	22.7	29.0	29.1	16.3	..	..	..
81/80S	24.3	31.0	24.4	18.5	23.4	28.9	22.6	21.9	..	27.6	15.3	..	..	..
81/80O	23.5	28.2	23.3	21.6	23.4	19.5	18.2	21.2	..	24.3	12.5	..	..	..
81/80N	22.6	27.0	22.1	22.2	21.8	16.8	15.6	20.2	34.6	24.5	10.1	..	..	..
81/80D	20.3	24.3	18.7	19.7	20.6	15.6	14.6	18.8	..	21.4	12.3	..	..	..

	SCHWEIZ SWITZERLAND SUISSE	OESTERREICH AUSTRIA AUTRICHE	NORGE NORWAY NORVEGE	SVERIGE SWEDEN SUEDE
	PRICE INDICES		1975 = 100	INDICES DE PRIX
1976 Ø	101.8	107.3	109.2	110.0
1977 Ø	103.0	113.2	119.0	122.7
1978 Ø	104.1	117.3	128.7	135.0
1979 Ø	107.9	121.6	135.0	144.6
1980 Ø	112.2	129.3	149.7	164.5
1981 Ø	119.5	148.1	170.0	184.4
1980 D	114.6	132.3	157.1	173.0
1981 J	115.7	134.3	161.7	176.3
1981 F	116.8	135.1	162.9	179.8
1981 M	117.6	136.2	166.1	180.6
1981 A	117.4	137.0	167.2	181.7
1981 M	118.4	136.9	167.9	182.9
1981 J	119.2	137.8	170.0	183.6
1981 J	119.8	138.6	172.5	185.2
1981 A	121.7	139.4	172.5	186.7
1981 S	121.8	139.7	174.1	188.0
1981 O	121.3	140.6	174.5	189.1
1981 N	122.1	140.3	175.3	189.8
1981 D	122.1	140.8	175.8	189.0
1982 J	122.7			
	RATE OF INCREASE OVER ONE MONTH		(T/T-1)	TAUX DE CROISSANCE SUR UN MOIS
80D/80N	0.4	0.8	0.7	0.4
81J/80D	1.0	1.5	2.9	1.9
81F/81J	1.0	0.6	0.8	2.0
81M/81F	0.6	0.8	2.0	0.5
81A/81M	- 0.2	0.6	0.6	0.6
81M/81A	0.9	- 0.1	0.4	0.6
81J/81M	0.7	0.6	1.3	0.4
81J/81J	0.5	0.6	1.4	0.9
81A/81J	1.6	0.5	0.0	0.8
81S/81A	0.1	0.2	0.9	0.7
81O/81S	- 0.4	0.6	0.2	0.6
81N/81O	0.7	- 0.2	0.5	0.3
81D/81N	0.0	0.3	0.3	- 0.4
82J/81D	0.5			
	RATE OF INCREASE OVER 12 MONTHS		(T/T-12)	TAUX DE CROISSANCE SUR 12 MOIS
80/79 D	4.4	6.7	13.7	14.0
81/80 J	5.2	7.0	15.2	12.5
81/80 F	6.0	6.7	14.2	12.9
81/80 M	6.4	7.2	14.5	13.0
81/80 A	5.7	7.4	14.6	12.9
81/80 M	5.9	6.8	15.9	13.2
81/80 J	6.4	6.3	13.9	13.3
81/80 J	6.5	6.5	14.2	13.4
81/80 A	7.5	6.4	13.5	13.6
81/80 S	7.5	6.9	13.5	11.3
81/80 O	7.2	7.2	12.6	10.4
81/80 N	7.0	7.0	12.4	10.1
81/80 D	6.6	6.4	11.9	9.2
82/81 J	6.1			

### Methodological Note

1. The consumer price indices presented here are national indices which may appear under different titles in some of the countries. The development of the general index published by EUROSTAT is equivalent to that published by the country.
2. The components of this general index correspond to groupings of the national indices aggregated according to a harmonized classification of the ESA (European System of Integrated Economic Accounts). The price development of these components is equal to the price development of the national indices for the same components of the classification.
3. The scope of the general index differs according to each country. This can be due to population differences (specific income classes, certain socio-occupational categories, or all households); differences in geographic zones (capital, urban areas, rural areas); or differences in the concepts of expenditure on rent, health, etc. Finally, methods of seasonal correction differ from country to country.
4. A fixed base system is used in some countries, while others use a chain system (variable weights). Base years may also differ between countries. For better comparison EUROSTAT has taken 1975 as the base year for all countries.
5. The EUR 9 indices are obtained from the arithmetic average of the national indices weighted by the relative share of each country in real values, as obtained for final household consumption and its components from the comparison in real values of the aggregates of ESA (1975).

### Note méthodologique

1. Les indices de prix à la consommation présentés ici sont les indices nationaux. Ces indices portent des noms différents dans les différents pays. L'indice général publié par l'EUROSTAT correspond toujours, en évolution, à l'indice général publié par le pays.
2. Les composantes de cet indice général correspondent à des regroupements des indices nationaux agrégés selon une classification harmonisée conforme au SEC (Système Européen des Comptes nationaux). Les évolutions de prix correspondent pour ces regroupements aux évolutions constatées par les indices nationaux pour le même champ de classification.
3. Le champ couvert par l'indice général est différent selon les pays, aussi bien concernant la population concernée (tranche de revenu spécifique, certaines catégories socio-professionnelles, ou l'ensemble des ménages) que en ce qui concerne les zones géographiques concernées (capitale, zones urbaines, ensemble des pays, etc...) ou encore concernant les concepts de dépense pour les loyers, la santé, etc.... Enfin, les traitements statistiques concernant les corrections des variations saisonnières sont aussi différents selon les pays.
4. Un système de base fixe est utilisé dans certains pays, dans d'autres un système en chaîne est mis en oeuvre (pondérations variables). Les années de référence utilisées au niveau national pour présenter les indices, sont différentes selon les pays. Pour faciliter la comparaison l'EUROSTAT a choisi l'année 1975 comme année commune pour la présentation de ces indices.
5. Les indices EUR 9 sont obtenus comme moyenne arithmétique des indices nationaux pondérés par les parts relatives des différents pays en valeurs réelles, telles qu'elles ont été obtenues pour la consommation finale des ménages et ses composantes lors de la comparaison en valeurs réelles des agrégats du SEC-1975.

