

COMMISSION OF THE EUROPEAN COMMUNITIES

COM(77) 466 final.

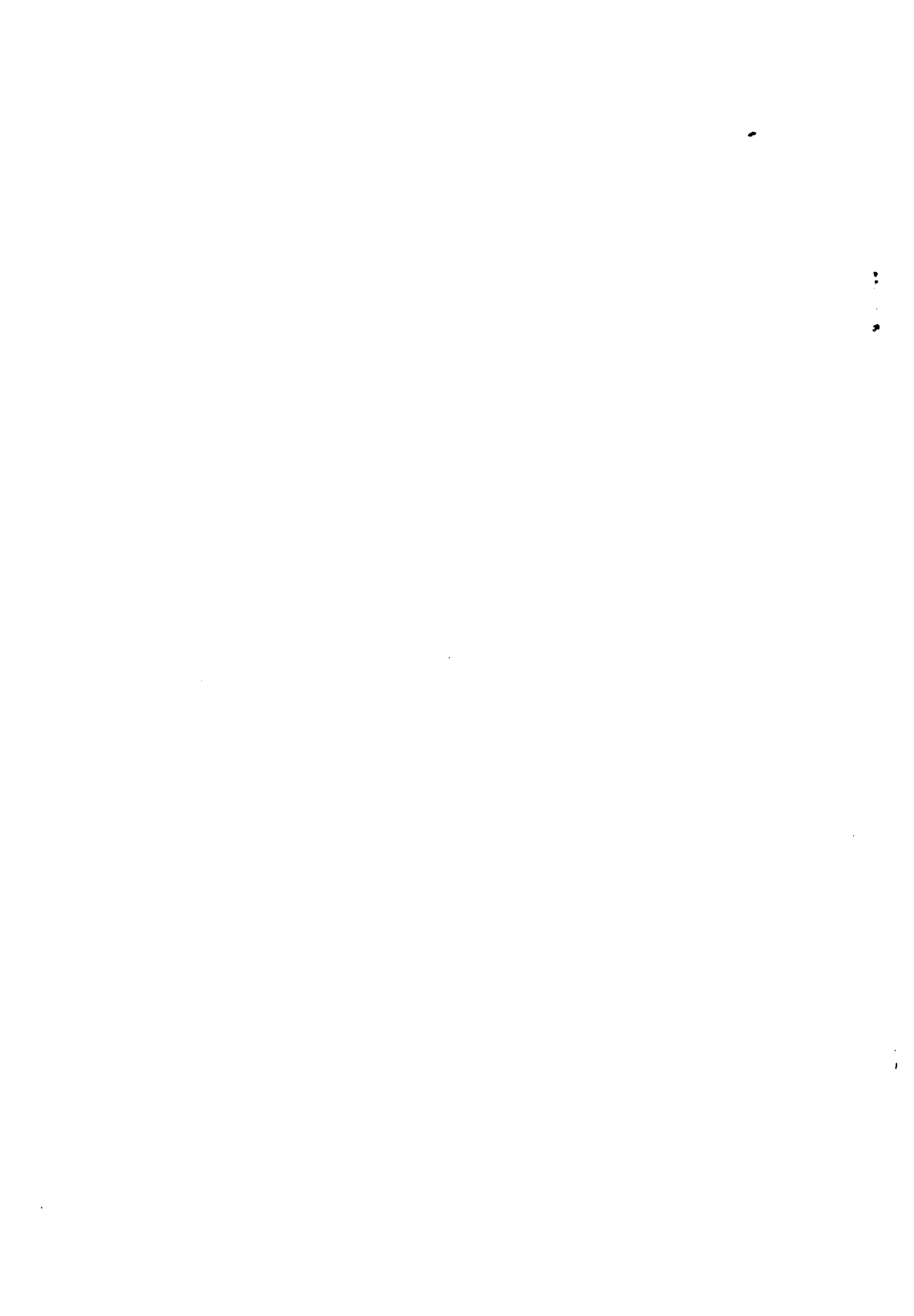
Brussels, 3 October 1977.

Proposal for a
COUNCIL REGULATION (EEC)

increasing the Community tariff quota opened
for the period 1 July 1977 to 30 June 1978
by Regulation (EEC) No 1331/77 for animals of
certain mountain breeds

(submitted to the Council by the Commission)

COM(77) 466 final.



EXPLANATORY MEMORANDUM

In its Regulation (EEC) No 1331/77 of 20 June 1977¹, the Council opened for the period from 1 July 1977 to 30 June 1978 a Community tariff quota for 30,000 head of animals of certain mountain breeds, not intended for slaughter, of which 20,000 head is contractual and 10,000 head autonomous.

The Commission considers that, in view of the aim pursued when this quota was bound within GATT, which is to replanish and improve the mountain herds, it is in the Community's interest to secure its supply under satisfactory conditions. Consequently it proposes that the tariff quota concerned be autonomously temporarily increased in keeping with export possibilities of the supplier countries and the absorption capacities of the Community.

This increase of 8,000 head is allocated in full to the Community reserve so as to ensure optimum use of the quota, allowing for uncertainties regarding future trade patterns.

¹ OJ No L 154, 23 June 1977, p. 2.

Whereas in view of the special characteristics of these animals and the uncertainties regarding future imports by each of the Member States, the whole of the additional quota should be allocated to the Community reserve set up under Article 3(2) of the abovementioned Regulation,

HAS ADOPTED THIS REGULATION :

Article 1

The volume of the Community tariff quota opened by Regulation (EEC) NO 1331/77 for heifers and cows, not intended for slaughter, of certain mountain breeds falling within subheading ex 01.02 A II b) of the Common Customs Tariff shall be increased from 30 000 to 38 000 head.

Article 2

This increase of 8 000 head shall be allocated to the Community reserve set up under Article 3(2) of Regulation (EEC) No 1331/77, thereby increasing the reserve from 11 000 to 19 000 head.

Article 3

This Regulation shall enter into force on the seventh day following its publication in the Official Journal of the European Communities.

This Regulation shall be binding in its entirety and directly applicable in all Member States.

Done at Brussels,

For the Council

The President

Proposal for a
COUNCIL REGULATION (EEC)

of

increasing the volume of the Community tariff quota
opened for the period 1 July 1977 to 30 June 1978
by Regulation (EEC) No 1331/77 for heifers and cows,
not intended for slaughter, of certain mountain breeds
falling within subheading ex 01.02 A II b) of the
Common Customs Tariff

THE COUNCIL OF THE EUROPEAN COMMUNITIES,

Having regard to the Treaty establishing the European Economic Community,
and in particular Articles 43 and 113 thereof,

Having regard to the proposal from the Commission,

Having regard to the Opinion of the European Parliament,

Whereas in its Regulation (EEC) No 1331/77¹, the Council opened for
the period 1 July 1977 to 30 June 1978 and allocated among the
Member States a Community tariff quota, at a duty of 4%, of 30 000
head of heifers and cows, not intended for slaughter, of certain
mountain breeds falling within subheading ex 01.02 A II b) of the
Common Customs Tariff;

Whereas, in certain areas and at certain periods of the year, production for
these animals is inadequate in the Community and consequently users
depend for their supplies on imports from non-member countries to an
extent that exceeds the volume of the quota opened by the abovementioned
Regulation; whereas it is therefore in the Community's interest autonomously
to increase the size of the tariff quota by a suitable amount,
which could be 8 000 head;

¹ OJ NO L 154, 23 . 6 . 1977, p. 2.