



# STATISTICS IN FOCUS

## Agriculture, forestry and fisheries



1996 □ 12

ISSN 1024-4263

### TRENDS IN THE EU AGRICULTURAL PRICE INDICES (OUTPUT AND INPUT) IN THE SECOND QUARTER OF 1996

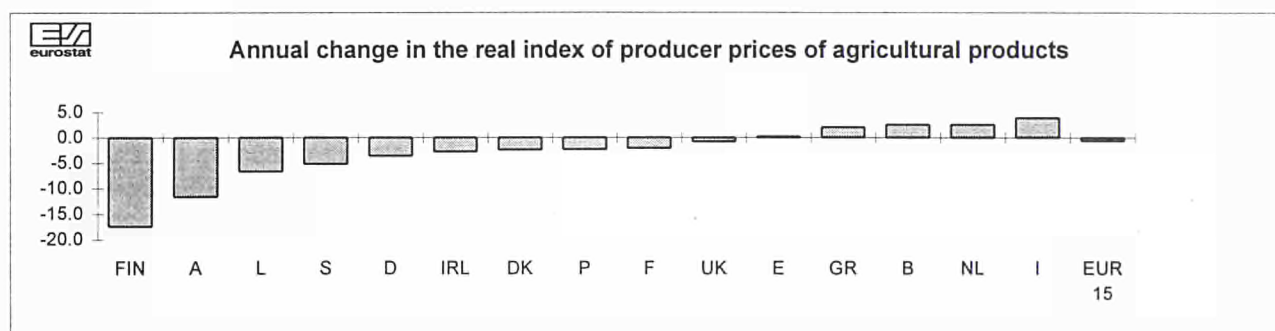
#### Producer prices of agricultural products (Output)

*Increase in nominal terms (+2.8%) for EUR 15; slight fall in real terms (-0.6%)*

The average monthly index of producer prices of agricultural products (including fruit and vegetables) for the Union as a whole (EUR 15, but still excluding the new German "Länder") rose +2.8% in *nominal* terms in the second quarter of 1996 relative to the corresponding quarter of the previous year (see Table 1). This nominal price rise was just less than the rate of inflation and so the *real* price index fell slightly (-0.6%).

Real producer prices for **crop products** in the Union as a whole decreased slightly (-1.0%)

relative to the second quarter of 1995, thus halting the price rise seen throughout 1995. There were price increases for olives and olive oil (+19.5%), fresh vegetables (+10.3%), wine (+8.0%) and fruit (+4.2%). There was a small decrease in the price index for cereals and rice (-0.7%). The price index for root crops declined steeply (-32.4%) because the price index for potatoes, exceptionally high in the 1994/95 season, returned to more usual levels in 1995/96. A notable price decrease was also seen for seeds (-10.6%).



Real producer prices for **animals and animal products** were almost unchanged (-0.2%). Steep price declines were recorded for calves (-15.6%) and cattle excluding calves (-16.4%), accentuating the trend seen throughout 1995 and the first quarter of 1996. This price change for cattle is

partly explained by reductions in the institutional prices, offset by increases in premiums, in the context of the reform of the Common Agricultural Policy. It is also due in part to the effects of a fall in consumer demand following concern about BSE. The fall in cattle prices was seen throughout the

Manuscript completed on = 23.10.1996

For further information please contact: G.Mahon  
Eurostat, L-2920 Luxembourg, tel. 4301-37310 Fax: 4301-37317

Price (excl. VAT) in Luxembourg: Subscription ECU 240,  
single copy ECU 6

Catalogue number: CA-NN-96-012-EN-C

Union. Even in the least extreme case, Greece, the price decline was steep (-10.8%). The decreases were most severe in Finland (-39.2%), Portugal (-19.0%), Luxembourg (-18.9%), the Netherlands (-18.5%) and United Kingdom (-18.5%). In contrast, there were strong price increases for sheep and lambs (+15.7%), pigs (+12.5%), poultry (+9.4%) and other animals (+8.0%). These changes are partly explained by a shift of demand away from beef towards meats of the other species. The downward trend in the price of milk, seen over several quarters, continued in the second quarter of 1996 (-2.5%). The price of eggs continued to increase strongly (+23.2%) relative to a low price level in 1995.

Across the **Member States** of the Union (see graph and Table 2), real price declines were

observed for Finland (-17.4%), Austria (-11.6%) and Sweden (-5.2%), though less marked than in previous quarters. These decreases are largely explained by the alignment of agricultural prices in these three new Member States on those found in the rest of the EU. In many cases these price decreases were offset by compensatory aids, either from the EU or the Member State concerned. For the other twelve Member States, notable price increases were observed in Italy (+3.9%), Belgium (+2.6%) and the Netherlands (+2.6%) and decreases were seen in Ireland (-2.8%), Germany (-3.6%) and Luxembourg (-6.7%). Changes in the remaining six Member States were in the range  $\pm 2.4\%$ . These changes are partly explained by the relative importance of products with a positive or negative price development in the different Member States.

### **Purchase prices of the means of agricultural production (Input)**

*Continued rise in nominal terms (+4.1%), increase in real terms (+1.2%)*

The average monthly index for the purchase prices of the **means of agricultural production** (Input 00) continued to rise in *nominal* terms (+4.1%) for EUR 15 in the first quarter of 1996 relative to the corresponding quarter of the previous year (see Table 3). This nominal rise was greater than the inflation rate and so the real price index increased (+1.2%) in contrast to the trend seen until the third quarter of 1995.

The index of the prices of goods and services for **current consumption in agriculture** (Input 01) rose in real terms (+1.8%). Price increases were observed for nearly all posts, including the most important ones:- fertilizers (+3.3%), feedingstuffs (+2.7%) and energy (+1.7%).

The real price index for the purchase price of goods and services contributing to **agricultural investment** (Input 02) was almost unchanged from the first quarter of 1995 to the first quarter of 1996 (+0.2%). An increase in the index for machinery (+1.0%) was offset by a decrease in the price index for buildings (-1.8%).

Across **Member States** (see Table 4) there were notable rises in the real input price index for Sweden (+5.0%), the United Kingdom (+4.3%) and Belgium (+2.6%). Changes in the other Member States were in the range +2.2% to -0.8%.

### **Comparison of trends in output and input prices Agricultural terms of trade**


*Moderate decline for EUR 15 (-1.6%)*

The real **agricultural terms of trade**, calculated by dividing the real output price by the real input price index, fell from its base level of 100 in 1990 for the Union as a whole, EUR 15, to 90.0 in 1993 and reached 91.1 in the second quarter of 1996. This level was lower (-1.6%) than the corresponding quarter of the previous year.

Across **Member States**, the terms of trade declined in most Member States, especially Finland (-17.9%), Austria (-13.7%) and Sweden

(-9.7%), but also Luxembourg (-8.2%), the United Kingdom (-4.9%) Ireland (-4.9%), Germany (-4.4%) and France (-3.7%). The steep decrease in the terms of trade for Finland and Austria is also mainly explained by the movement of output prices towards those of the rest of the EU following adhesion. The terms of trade improved notably in Italy (+4.7%), while changes in the terms of trade for the remaining six Member States were in the range  $\pm 3\%$ .

## Real Agricultural Terms of Trade

 eurostat	1st Quarter 1996		2nd Quarter 1996	
	Index (1990=100)	01.96-03.96 01.95-03.95 (%)	Index (1990=100)	04.96-06.96 04.95-06.95 (%)
<b>B</b>	93.2	- 2.3	89.5	0.1
<b>DK</b>	84.1	- 4.7	86.7	- 2.8
<b>D</b>	83.6	- 6.1	83.6	- 4.4
<b>GR</b>	90.3	- 4.3	95.1	2.9
<b>E</b>	115.4	2.9	106.0	- 0.7
<b>F</b>	84.8	- 3.7	83.7	- 3.7
<b>IRL</b>	101.9	- 0.5	99.1	- 4.9
<b>I</b>	95.7	0.8	93.8	4.7
<b>L</b>	75.3	- 7.7	70.8	- 8.2
<b>NL</b>	103.1	0.1	94.2	1.3
<b>A</b>	67.3	-15.1	67.9	-13.7
<b>P</b>	98.0	- 0.7	97.5	- 1.5
<b>S</b>	79.0	-10.8	78.9	- 9.7
<b>FIN</b>	70.9	-18.5	67.0	-17.9
<b>UK</b>	98.0	- 2.6	95.1	- 4.9
<b>EUR 15</b>	<b>93.6</b>	<b>- 2.2</b>	<b>91.1</b>	<b>- 1.6</b>

### Methodological notes

**Deflation:** The EU agricultural price indices (output and input) are available in Eurostat's NewCRONOS database (PRAG domain) in both nominal and deflated form. By using the deflated indices it is possible to avoid the distortions in the nominal indices caused by different inflation rates in the Member States. The nominal agricultural price indices are deflated by means of the consumer price index for each Member State. The terms "deflated" and "real" are used synonymously in this report.

**Rebasing:** Eurostat and the Member States have now changed the agricultural price indices from the base 1985=100 to 1990=100, although in certain cases the rebased indices are still provisional. Monthly agricultural price indices are available in NewCRONOS from January 1994 for all Member States and for the European Union as a whole, EUR 15. (Annual agricultural price indices with 1990=100 are available in the database from 1990 and in certain cases from 1985.)

Table 1

**EU Index of producer prices of agricultural products:**  
Rates of change of the price indices for EUR 15 (in %)\*

		04/95-06/95	07/95-09/95	10/95-12/95	01/96-03/96	04/96-06/96
		04/94-06/94	07/94-09/94	10/94-12/94	01/95-03/95	04/95-06/95
<b>NOMINAL INDICES</b>						
<b>0</b>	<b>TOTAL</b>	<b>4.2</b>	<b>2.0</b>	<b>3.5</b>	<b>2.3</b>	<b>2.8</b>
<b>1</b>	<b>CROP PRODUCTS</b>	<b>9.2</b>	<b>4.8</b>	<b>7.1</b>	<b>4.5</b>	<b>3.1</b>
11	Cereals and rice	1.6	5.1	4.5	3.8	2.2
12	Root crops	30.4	-6.2	-11.6	-31.3	-30.4
13	Fruit	9.4	10.1	15.2	9.0	9.1
14	Fresh vegetables	3.6	-7.2	4.2	17.2	16.0
15	Wine must and wine	17.5	18.2	17.1	14.9	12.2
16	Olives and olive oil	19.2	22.6	30.2	34.7	23.7
17	Seeds	14.1	14.0	5.4	-0.8	-8.2
18	Flowers etc.	8.4	8.8	9.8	1.1	-1.0
19	Other crop products	-5.8	-1.0	1.6	0.5	3.7
<b>2</b>	<b>ANIMALS AND ANIMAL PRODUCTS</b>	<b>-0.6</b>	<b>-0.5</b>	<b>0.1</b>	<b>-0.1</b>	<b>2.5</b>
21	Animals	-1.3	-1.6	-1.2	-2.7	2.3
21A	Calves	1.2	-0.9	-5.8	-10.3	-12.9
21B	Cattle excluding calves	-6.4	-6.6	-6.9	-9.1	-14.4
21C	Pigs	4.7	4.8	7.0	2.2	14.9
21D	Sheep and lambs	-3.0	0.4	-0.7	4.3	18.7
21E	Poultry	-3.8	-5.7	-2.4	4.4	13.3
21F	Other animals	6.1	0.2	-5.1	-3.1	12.5
22	Milk	2.1	1.3	0.6	0.3	-0.2
23	Eggs	-11.7	-3.1	11.7	29.5	26.7
24	Other animal products	16.4	16.7	9.2	8.8	8.2
<b>DEFLATED INDICES</b>						
<b>0</b>	<b>TOTAL</b>	<b>0.4</b>	<b>-1.6</b>	<b>-0.1</b>	<b>-1.0</b>	<b>-0.6</b>
<b>1</b>	<b>CROP PRODUCTS</b>	<b>4.8</b>	<b>0.5</b>	<b>2.9</b>	<b>0.7</b>	<b>-1.0</b>
11	Cereals and rice	-2.2	1.1	0.8	0.6	-0.7
12	Root crops	26.9	-9.3	-14.2	-33.3	-32.4
13	Fruit	4.3	4.9	9.6	4.4	4.2
14	Fresh vegetables	-2.3	-11.7	0.2	14.1	10.3
15	Wine must and wine	13.2	13.9	12.7	10.7	8.0
16	Olives and olive oil	12.5	16.3	24.0	29.6	19.5
17	Seeds	10.7	10.9	2.6	-3.4	-10.6
18	Flowers etc.	5.1	6.1	7.3	-1.1	-3.1
19	Other crop products	-10.4	-5.8	-3.3	-4.9	-1.4
<b>2</b>	<b>ANIMALS AND ANIMAL PRODUCTS</b>	<b>-3.8</b>	<b>-3.5</b>	<b>-2.8</b>	<b>-2.8</b>	<b>-0.2</b>
21	Animals	-4.6	-4.7	-4.3	-5.5	-0.5
21A	Calves	-2.1	-4.0	-9.1	-13.3	-15.6
21B	Cattle excluding calves	-9.2	-9.3	-9.5	-11.5	-16.4
21C	Pigs	1.3	1.8	3.9	-0.4	12.5
21D	Sheep and lambs	-7.5	-3.7	-4.3	0.7	15.7
21E	Poultry	-8.0	-9.7	-6.6	0.9	9.4
21	Other animals	1.5	-4.2	-9.7	-7.6	8.0
22	Milk	-0.9	-1.5	-2.1	-2.0	-2.5
23	Eggs	-15.3	-6.6	8.1	26.1	23.2
24	Other animal products	11.3	12.8	4.8	4.3	4.3

\* On the base 1990 = 100

**Table 2**

**EU Index of producer prices of agricultural products : Rates of change of the price indices by Member State (in %) (1)**

			B	DK	D(2)	GR	E	F	IRL	I	L	NL	A	P	FIN	S	UK	EUR 15
Total	Nominal indices	a)	-6.6	-2.2	-2.6	8.4	4.1	0.2	2.4	7.8	-0.4	2.2	-26.6	0.0	-24.5	-2.7	7.8	2.0
		b)	0.0	-1.7	-1.9	6.9	11.6	0.0	5.4	6.3	-0.2	5.8	-26.3	5.7	-27.1	-4.6	9.4	3.5
		c)	-0.2	-3.0	-5.1	3.7	7.2	-0.1	2.7	8.1	-12.5	2.3	-12.0	0.5	-18.5	-4.4	3.9	2.3
		d)	4.6	-0.4	-2.1	11.3	3.8	0.2	-1.4	8.4	-5.4	4.6	-10.2	1.0	-16.9	-4.5	1.5	2.8
	Deflated indices	a)	-7.7	-4.0	-4.3	-0.3	-0.4	-1.6	-0.2	2.1	-2.1	0.6	-28.1	-3.8	-24.9	-5.0	4.0	-1.6
		b)	-1.4	-3.5	-3.7	-1.2	6.9	-1.9	2.9	0.7	-1.5	4.2	-27.7	1.8	-27.3	-6.8	6.0	-0.1
		c)	-2.2	-4.7	-6.6	-4.6	3.4	-2.2	0.7	3.0	-13.5	0.4	-13.5	-1.9	-19.0	-5.8	1.1	-1.0
		d)	2.6	-2.4	-3.6	2.1	0.2	-2.1	-2.8	3.9	-6.7	2.6	-11.6	-2.3	-17.4	-5.2	-0.8	-0.6
Crop products	Nominal indices	a)	-13.3	-2.0	-5.5	12.0	8.0	2.4	1.7	9.3	-2.2	6.8	-30.6	-0.7	-34.3	1.5	7.7	4.8
		b)	2.8	-1.1	-5.0	9.7	15.8	1.9	10.3	9.5	-3.3	13.4	-29.0	5.2	-39.3	-5.3	8.8	7.1
		c)	0.1	-4.5	-11.8	5.8	10.8	2.3	8.5	10.6	-5.4	4.5	-28.1	-0.1	-16.5	-7.7	0.8	4.5
		d)	-0.2	-4.5	-11.4	15.8	2.5	0.1	11.2	10.9	-5.3	3.6	-28.0	-4.6	-14.7	-7.8	-2.4	3.1
	Deflated indices	a)	-14.3	-3.7	-7.2	3.1	3.4	0.6	-0.8	3.5	-3.9	5.1	-32.1	-4.5	-34.6	-0.9	3.8	0.5
		b)	1.4	-3.0	-6.7	1.4	10.9	-0.1	7.7	3.7	-4.6	11.6	-30.3	1.4	-39.5	-7.5	5.5	2.9
		c)	-1.9	-6.2	-13.2	-2.6	6.8	0.2	6.4	5.3	-6.4	2.5	-29.3	-2.4	-16.9	-9.0	-1.9	0.7
		d)	-2.1	-6.4	-12.7	6.2	-1.1	-2.2	9.6	6.3	-6.6	1.6	-29.2	-7.7	-15.3	-8.5	-4.6	-1.0
Animal products	Nominal indices	a)	-2.1	-2.3	-1.3	-0.1	-1.9	-2.0	2.5	5.6	-0.1	-1.1	-25.4	0.8	-20.3	7.9	-4.2	-0.5
		b)	-1.6	-2.0	-0.6	0.3	4.1	-1.9	4.8	1.8	0.4	-0.5	-25.5	6.3	-22.2	9.8	-4.3	0.1
		c)	-0.4	-2.1	-2.0	-2.0	0.3	-2.6	1.8	4.2	-13.8	0.0	-5.6	1.3	-19.2	5.9	-3.0	-0.1
		d)	8.0	2.0	2.3	-0.5	6.4	0.3	-3.2	4.4	-5.4	5.5	-3.0	8.2	-17.7	4.1	-3.0	2.5
	Deflated indices	a)	-3.3	-4.1	-3.1	-8.0	-6.1	-3.7	0.0	0.0	-1.8	-2.7	-27.0	-3.0	-20.7	-6.4	4.0	-3.5
		b)	-2.9	-3.8	-2.4	-7.3	-0.2	-3.8	2.3	-3.5	-1.0	-2.0	-26.8	2.4	-22.4	-6.5	6.4	-2.8
		c)	-2.3	-3.8	-3.6	-9.9	-3.3	-4.6	-0.2	-0.7	-14.7	-1.9	-7.2	-1.2	-19.7	-4.5	3.1	-2.8
		d)	6.0	0.0	0.8	-8.7	2.7	-2.0	-4.6	0.1	-6.7	3.5	-4.5	4.7	-18.3	-3.8	1.8	-0.2

(1) On the base 1990 = 100

a = 07/95-09/95  
07/94-09/94

b = 10/95-12/95  
10/94-12/94

c = 01/96-03/96  
01/95-03/95

d = 04/96-06/96  
04/95-06/95

(2) Data for the Federal Republic of Germany in its boundaries prior to 3 October 1990, including West Berlin.

Table 3

EU Index of purchase prices of the means of agricultural production:  
Rates of change of the price indices for EUR 15 (in %)\*

		04/95-06/95	07/95-09/95	10/95-12/95	01/96-03/96	04/96-06/96
		04/94-06/94	07/94-09/94	10/94-12/94	01/95-03/95	04/95-06/95
<b>NOMINAL INDICES</b>						
<b>00</b>	<b>TOTAL</b>	2.2	2.9	3.5	4.2	4.1
<b>01</b>	<b>GOODS AND SERVICES CURRENTLY CONSUMED IN AGRICULTURE</b>	1.7	2.6	3.4	4.5	4.5
1	Seeds	2.9	5.7	6.9	4.5	4.7
2	Animals for rearing	1.9	-1.1	-3.0	-7.2	0.2
3	Energy	1.3	1.3	3.1	5.3	5.0
4	Fertilizers	5.8	7.5	6.5	7.9	6.0
5	Plant protection products	-0.5	0.9	0.6	2.5	2.5
6	Animal feedingstuffs	-0.8	0.6	2.8	5.1	5.7
7	Small tools	6.3	6.5	4.9	3.8	2.7
8	Maintenance and repair of plant	3.7	4.4	4.4	5.0	5.0
9	Maintenance and repair of buildings	3.9	3.6	3.0	2.7	1.9
10	Veterinary services	2.4	2.3	2.5	2.7	2.9
11	General expenses	3.4	3.6	3.5	2.5	1.7
<b>02</b>	<b>GOODS AND SERVICES CONTRIBUTING TO AGRICULTURAL INVESTMENT</b>	3.7	3.8	3.7	3.5	2.9
12	Machinery	3.9	4.2	4.4	4.5	3.9
13	Buildings	3.3	3.2	2.8	2.2	1.5
<b>DEFLATED INDICES</b>						
<b>00</b>	<b>TOTAL</b>	-1.2	-0.4	0.2	1.2	1.2
<b>01</b>	<b>GOODS AND SERVICES CURRENTLY CONSUMED IN AGRICULTURE</b>	-1.6	-0.6	0.3	1.6	1.8
1	Seeds	-0.3	2.6	3.7	2.0	2.1
2	Animals for rearing	-1.1	-4.0	-5.7	-9.4	-1.8
3	Energy	-2.2	-2.0	-0.3	2.0	1.7
4	Fertilizers	2.8	4.7	3.8	5.0	3.3
5	Plant protection products	-3.7	-2.4	-2.6	-0.5	-0.3
6	Animal feedingstuffs	-4.2	-2.9	-0.7	2.0	2.7
7	Small tools	2.8	3.0	1.7	0.8	-0.2
8	Maintenance and repair of plant	0.8	1.6	1.7	2.4	2.4
9	Maintenance and repair of buildings	0.6	0.6	0.2	0.1	-0.5
10	Veterinary services	-0.6	-0.6	-0.4	0.0	0.3
11	General expenses	0.6	0.9	1.0	0.1	-0.5
<b>02</b>	<b>GOODS AND SERVICES CONTRIBUTING TO AGRICULTURAL INVESTMENT</b>	-0.2	0.0	0.0	0.2	-0.2
12	Machinery	0.4	0.7	1.0	1.4	1.0
13	Buildings	-0.9	-0.9	-1.3	-1.5	-1.8

\* On the base 1990 = 100

Table 4

EU Index of purchase prices of the means of agricultural production : Rates of change of the price indices by Member State (in %) (1)

			B	DK	D(2)	GR	E	F	IRL	I	L	NL	A	P	FIN	S	UK	EUR 15
Total	Nominal indices	a)	-0.1	1.5	0.9	6.8	4.2	2.0	2.3	9.0	1.7	0.3	1.4	-8.6	-18.0	3.5	6.2	2.9
		b)	1.2	1.5	0.9	7.9	4.2	2.6	3.3	8.9	1.2	2.4	1.8	-6.4	-18.1	5.0	6.6	3.5
		c)	2.1	1.9	1.1	8.4	4.2	3.8	7.2	7.2	2.9	2.2	3.7	1.2	0.1	6.7	7.3	4.2
		d)	4.5	2.4	2.5	8.2	4.5	4.1	3.5	3.5	3.1	3.3	4.0	2.5	1.2	6.7	5.8	4.1
	Deflated indices	a)	-1.3	-0.4	-0.9	-1.7	-0.3	0.2	3.2	3.2	-0.1	-1.3	-0.7	-12.0	-18.4	3.7	-0.2	-0.4
		b)	-0.2	-0.4	-0.9	-0.3	-0.2	0.7	3.1	3.1	-0.2	0.9	-0.1	-9.8	-18.4	4.1	1.8	0.2
		c)	0.1	0.0	-0.5	-0.3	0.5	1.6	2.2	2.2	1.8	0.2	1.9	-1.2	-0.5	5.7	3.8	1.2
		d)	2.6	0.4	0.9	-0.8	0.9	1.6	-0.8	-0.8	1.6	1.3	2.4	-0.8	0.6	5.0	4.3	1.2
Goods and services currently consumed in agriculture	Nominal indices	a)	-0.6	1.0	0.8	5.4	3.8	1.9	1.7	13.2	2.1	-0.7	0.9	-12.2	-19.6	6.1	3.4	2.6
		b)	0.9	1.1	0.8	7.0	4.2	2.6	3.2	12.2	1.0	2.2	1.5	-9.0	-19.3	7.3	5.5	3.4
		c)	2.3	1.8	1.0	8.7	4.2	4.1	3.7	9.0	4.4	2.9	4.7	0.7	-0.1	8.6	7.3	4.5
		d)	5.3	2.6	2.9	8.9	4.9	4.4	4.4	4.5	4.6	4.4	5.4	2.0	1.5	7.4	7.5	4.5
	Deflated indices	a)	-1.8	-0.8	-1.1	-3.0	-0.7	0.1	-0.8	7.2	0.4	-2.2	-1.2	-15.5	-20.0	3.6	-0.3	-0.6
		b)	-0.5	-0.7	-1.0	-1.1	-0.2	0.7	0.8	6.3	-0.3	0.6	-0.4	-12.4	-19.5	4.9	2.2	0.3
		c)	0.3	0.0	-0.6	0.1	0.5	1.9	1.7	3.9	3.2	1.0	2.9	-1.7	-0.6	7.0	4.4	1.6
		d)	3.3	0.7	1.3	-0.1	1.2	2.0	2.9	-1.5	3.2	2.4	3.8	-1.3	0.8	6.6	5.1	1.8
Goods and services contributing to agricultural investment	Nominal indices	a)	3.4	3.4	1.3	11.7	5.3	2.5	4.3	5.1	1.2	3.1	2.1	8.7	-14.7	6.5	3.9	3.8
		b)	2.9	2.9	1.5	11.2	4.5	2.6	3.7	5.7	1.4	3.1	2.2	6.3	-15.9	4.4	2.6	3.7
		c)	1.0	2.1	1.4	7.0	4.1	2.6	1.4	5.5	1.2	0.0	2.4	3.3	0.3	3.3	2.9	3.5
		d)	0.1	1.4	1.2	5.5	3.6	2.6	1.7	4.2	1.1	0.0	2.2	4.5	0.7	1.0	2.1	2.9
	Deflated indices	a)	2.2	1.5	-0.5	2.8	0.8	0.7	1.7	-0.5	-0.6	1.5	0.0	4.6	-15.1	4.0	0.2	0.0
		b)	1.5	1.0	-0.3	2.8	0.1	0.7	1.2	0.1	0.1	1.5	0.3	2.4	-16.1	2.0	-0.6	0.0
		c)	-1.0	0.2	-0.2	-1.5	0.5	0.5	-0.6	0.5	0.1	-1.9	0.7	0.9	-0.3	1.8	0.1	0.2
		d)	-1.7	-0.6	-0.3	-3.2	-0.1	0.2	0.2	-0.1	-0.3	-1.9	0.6	1.1	0.0	0.3	-0.1	-0.2

(1) On the base 1990 = 100

a = 07/95-09/95  
07/94-09/94

b = 10/95-12/95  
10/94-12/94

c = 01/96-03/96  
01/95-03/95

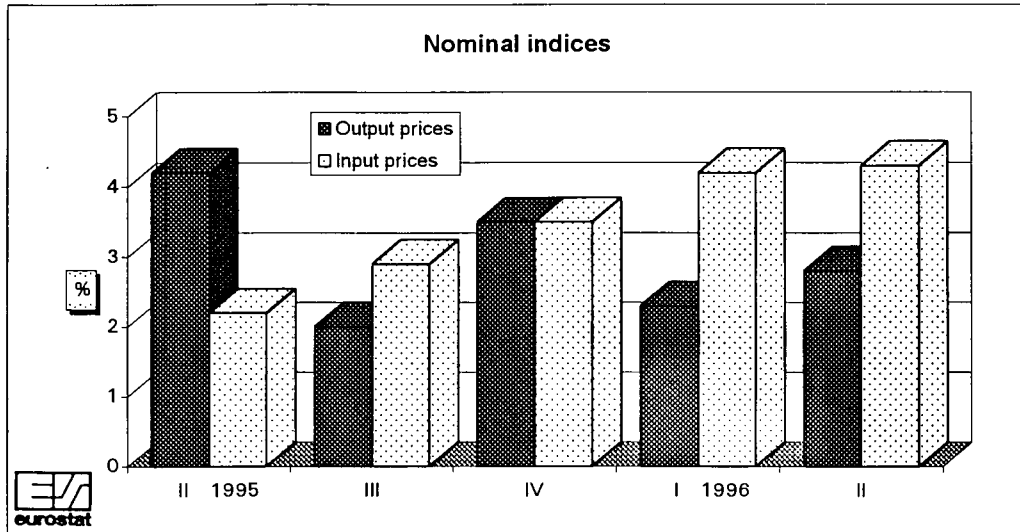
d = 04/96-06/96  
04/95-06/95

(2) Data for the Federal Republic of Germany in its boundaries prior to 3 October 1990, including West Berlin.

Rates of change of the EU agricultural price indices

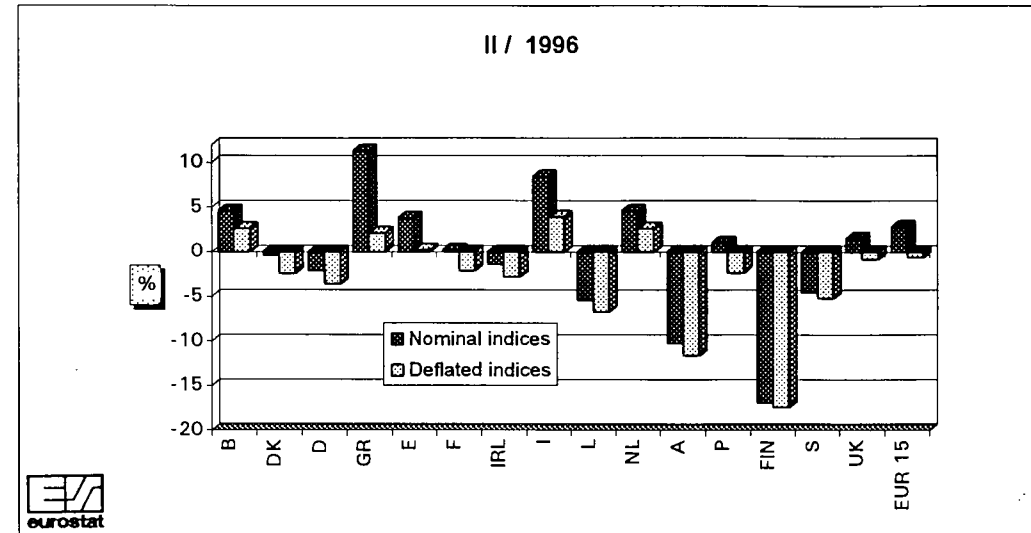
EUR 15

Nominal indices

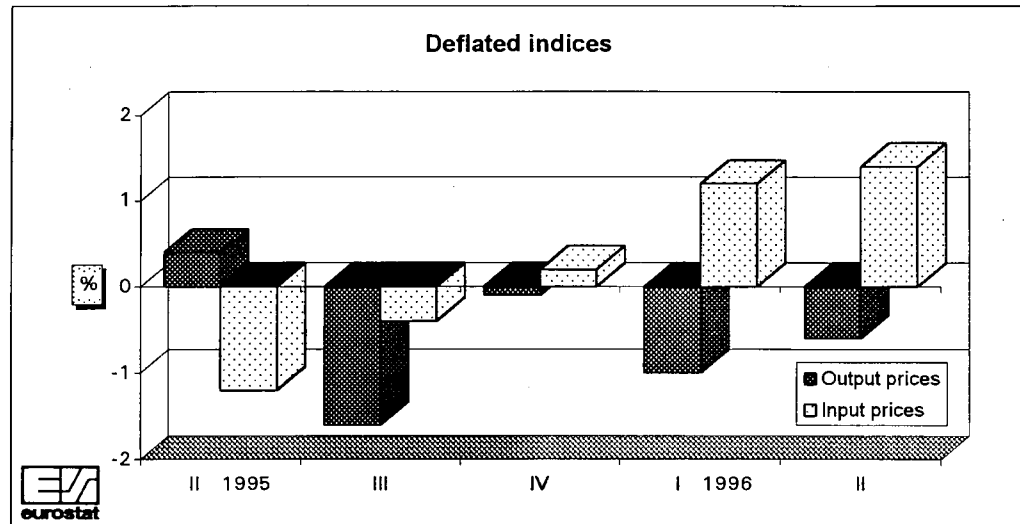


EU Index of producer prices of agricultural products:  
Rates of change of the price indices by Member State

II / 1996



Deflated indices



EU Index of purchase prices of the means of agricultural production:  
Rates of change of the price indices by Member State

II / 1996

