

1995 □ 7

ISSN 1024-4263

### *December 1994 cattle population survey*

## Stabilization of cattle population confirmed after very marked cyclical fall

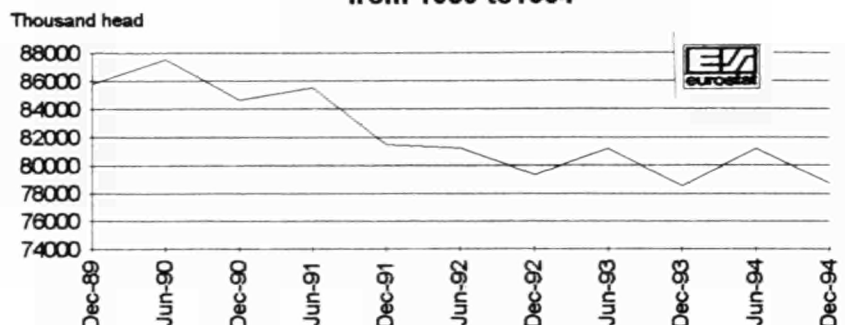
At the end of 1994 the cattle population in the twelve-member European Union was 78.7 million head, according to the survey carried out in the various Member States during the month of December. These results confirm the stabilizing population trend already observed in the middle of the year. The number of dairy cows, however, is still on the decline in most countries, with the notable exception of France. Although forecast slaughterings for 1995 are slightly down compared with 1994, the tonnage of beef and veal produced is likely to be up because of increased carcass weight.

After a particularly marked cyclical fall, the worst is now well and truly over. The stabilization in cattle numbers already observed in the June 1994 survey was confirmed by the cattle population survey carried out in the various countries of the former twelve-member European Union during December. 78.7 million head of cattle were recorded at the end of 1994, some **200 000 more than in December 1993**.

Of course, these numbers are substantially lower than those recorded in the middle of the year, because of the traditional autumn

destocking of grazing land. Year in year out the seasonal fluctuation amounts to 3% of the animal population, i.e. some 2.5 million

Evolution of cattle population of EU  
from 1989 to 1994



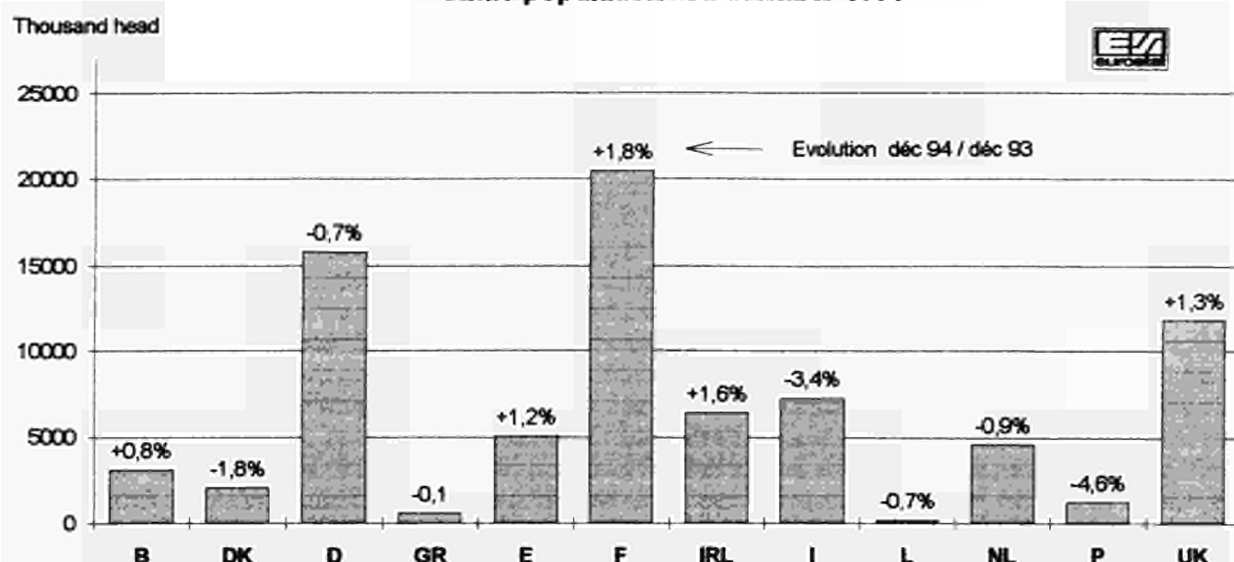
Manuscript completed on = 20.03.1995

 For further information please contact: D.WAHL  
 Eurostat, L-2920 Luxembourg, tel. 4301-37115 Fax: 4301-37318

 Price (excl. VAT) in Luxembourg: Subscription ECU 240,  
 single copy ECU 6

Catalogue number: CA-NN-95-007-EN-C

## Cattle population in December 1994



head throughout the Union. The seasonal variation is much larger in Ireland, where it can be as much as 10% or more.

The stabilization, or even recovery, in cattle numbers can be seen in most of the countries. France and the United Kingdom, which have large numbers of cattle, set the tone with increases of 1.8% and 1.3% respectively. Spain and Belgium are heading in the same direction, reporting increases of around 1%. In Germany, the Netherlands and Denmark the steep decline in numbers has levelled out. Ireland, where cattle numbers have been rising constantly for the last four years, continues to be a case apart. Only Portugal and Italy continue to make drastic reductions in their herds, particularly in the dairy component.

As regards dairy cows, downward adjustments are continuing more or less everywhere, though the falls are generally modest.

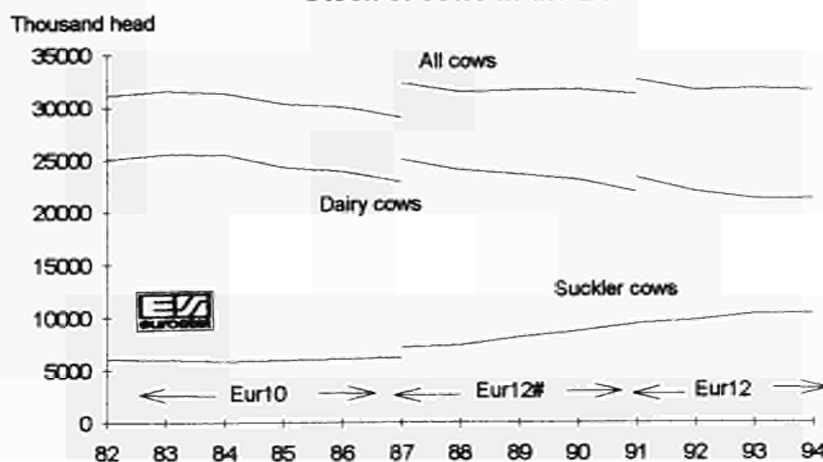
### 300 000 fewer dairy cows than the year before

In an environment dominated by the quota system, there is nothing surprising in a slow decline in dairy herds, in that the upward trend in yield per

cow has to be balanced out in order not to exceed the authorized level of milk production.

Particularly in the countries of southern Europe there is still considerable room for productivity gains, since their average milk yield is still 20% below the Community average. These productivity gains often come about through the

## Stock of cows in the EU



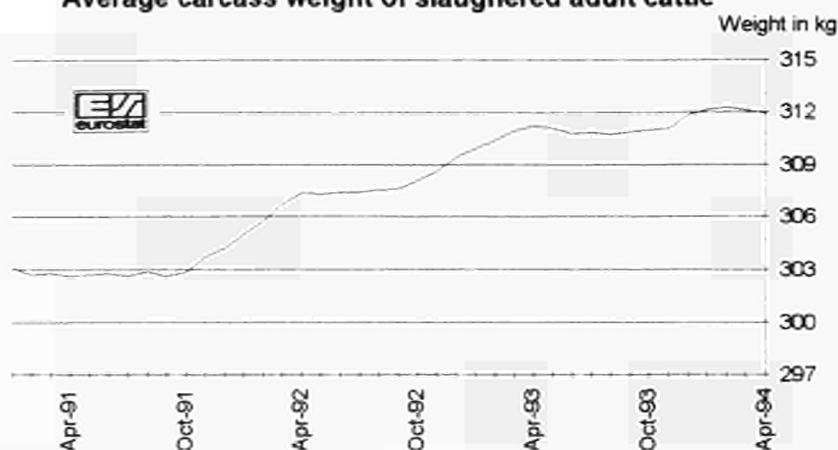
disappearance of small farms with low yields, of which there are generally large numbers. It is therefore *a priori* no surprise if the number of dairy cows continues to fall, sometimes substantially, in Spain, Portugal and Italy.

Overlaying this more or less structural development there are of course the **short-term decisions** taken by farmers to adjust milk production to the allowed quotas. France thus saw an increase in the numbers of dairy cows after several years of decline. At present it is the only country where this turnaround can be seen. The increase is considerable (2.8%) and comes after a 1993/94 milk year in which French milk production was below the allowed quotas. Since this under-production continued in the first few months of the current milk year, it seems that farmers have preferred to enlarge their herds rather than drive up productivity.

#### Suckler cows: 10.4 million head

Overall the number of suckler cows is up by 1%, but herd numbers are still well below the reference population, i.e. the number of cows potentially eligible for premium (10.9 million head for the 12 old Member States of the Union). The shortfall is of the order of

Average carcass weight of slaughtered adult cattle

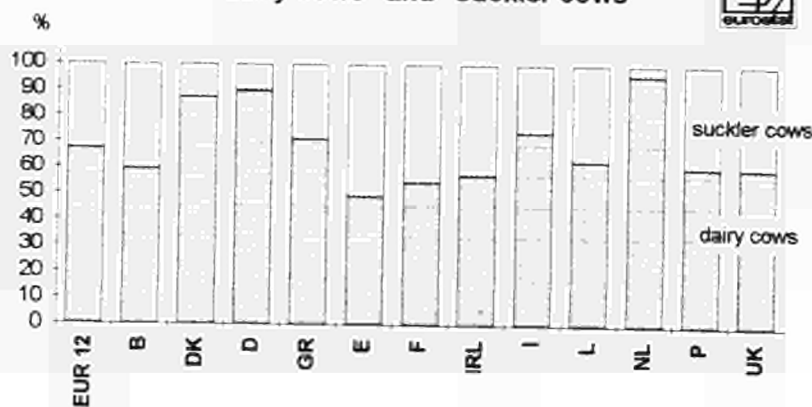


5%, quite apart from the fact that for various reasons, although they are not classified as dairy cows, no premium for suckler cows is paid on a good number of the so called "other cows". One of these reasons is the restriction on cattle numbers per hectare. It can also be seen that here and there some livestock farmers are having a change of heart. This is the case in Denmark and in the Netherlands, where a certain disaffection from this type of stockbreeding is emerging. The truth is that the suckler cow, which by nature represents a form of

extensive production, has never really been popular in these countries, which are front runners in high dairy yields. Only one cow in 8 is a suckler cow in Denmark and less than one in 20 in the Netherlands, whereas the Community average is one in 3.

As regards replacement animals, more **breeding females** were recorded than in 1993. It is true that there are slightly fewer adult heifers, but it can be seen that for the last two years livestock farmers have tended to keep more female calves than before.

Breakdown of cows by  
"dairy cows" and "suckler cows"



3/17/95

BOVINE LIVESTOCK IN DECEMBER  
1000 HEADRINDERBESTAND IN DEZEMBER  
1000 STUECKEFFECTIFS BOVINS EN DECEMBRE  
1000 TETES

|  | EUR 12 | B | DK | D | GR | E | F | IRL | I | L | NL | P | UK |
|--|--------|---|----|---|----|---|---|-----|---|---|----|---|----|
|--|--------|---|----|---|----|---|---|-----|---|---|----|---|----|

|         | TOTAL (buffaloes included) |        |        |         | INSGESAMT (Büffel einbegriffen) |        |         |        | TOTAL (buffles compris) |        |        |        |         |  |
|---------|----------------------------|--------|--------|---------|---------------------------------|--------|---------|--------|-------------------------|--------|--------|--------|---------|--|
| 12/93   | 78539                      | 3084   | 2115   | 15897   | 608                             | 5000   | 20099   | 6309   | 7523                    | 205    | 4629   | 1323   | 11710   |  |
| 12/94   | 78746 *                    | 3109 * | 2082 * | 15792 * | 608 !                           | 5060 * | 20470 * | 6410 * | 7265 *                  | 204 *  | 4588 * | 1262 * | 11857 * |  |
| % 94/93 | 0.3 *                      | 0.8 *  | -1.6 * | -0.7 *  | -0.1 !                          | 1.2 *  | 1.8 *   | 1.6 *  | -3.4 *                  | -0.7 * | -0.9 * | -4.6 * | 1.3 *   |  |

| 1       | BOVINES LESS THAN 1 YEAR OLD |       |        |        | RINDER VON WENIGER ALS 1 JAHR |        |        |        | BOVINS DE MOINS DE 1 AN |        |        |        |        |  |
|---------|------------------------------|-------|--------|--------|-------------------------------|--------|--------|--------|-------------------------|--------|--------|--------|--------|--|
| 12/93   | 23005                        | 900   | 792    | 5324   | 174                           | 1501   | 5070   | 1566   | 2398                    | 57     | 1571   | 394    | 3259   |  |
| 12/94   | 23026 *                      | 923 * | 768 *  | 5284 * | 194 !                         | 1569 * | 5107 * | 1558 * | 2331 *                  | 54 *   | 1568 * | 368 *  | 3322 * |  |
| % 94/93 | 0.1 *                        | 2.6 * | -3.0 * | -0.8 * | -0.3 !                        | 4.5 *  | 0.7 *  | -0.5 * | -2.8 *                  | -4.2 * | -0.2 * | -6.6 * | 1.9 *  |  |

| 1.1     | CALVES FOR SLAUGHTER |       |       |       | SCHLACHTKAEHLBER |        |        |     | VEAUX DE BOUCHERIE |         |       |        |         |  |
|---------|----------------------|-------|-------|-------|------------------|--------|--------|-----|--------------------|---------|-------|--------|---------|--|
| 12/93   | 3487                 | 159   | 6     | 158   | 85               | 1022   | 979    | 0   | 392                | 2       | 616   | 54     | 15      |  |
| 12/94   | 3453 *               | 163 * | 6 *   | 161 * | 88 !             | 1084 * | 902 *  | 0   | 371 *              | 1 *     | 618 * | 52 *   | 11 *    |  |
| % 94/93 | -1.0 *               | 2.5 * | 0.0 * | 1.9 * | -1.0 !           | 6.1 *  | -7.9 * | 0.0 | -5.4 *             | -44.6 * | 0.3 * | -3.7 * | -26.7 * |  |

| 1.2     | OTHER MALE |       |        |        | ANDERE MAENNLICHE |        |        |        | AUTRES MALES |        |       |        |        |  |
|---------|------------|-------|--------|--------|-------------------|--------|--------|--------|--------------|--------|-------|--------|--------|--|
| 12/93   | 8819       | 283   | 368    | 2471   | 37                | 132    | 1678   | 847    | 1014         | 20     | 277   | 172    | 1520   |  |
| 12/94   | 8736 *     | 287 * | 356 *  | 2436 * | 37 !              | 124 *  | 1697 * | 838 *  | 970 *        | 19 *   | 278 * | 160 *  | 1534 * |  |
| % 94/93 | -0.9 *     | 1.4 * | -3.3 * | -1.4 * | -0.9 !            | -6.1 * | 1.1 *  | -1.0 * | -4.3 *       | -4.4 * | 0.4 * | -7.0 * | 0.9 *  |  |

| 1.3     | OTHER FEMALE |       |        |        | ANDERE WEIBLICHE |       |        |       | AUTRES FEMELLES |        |        |        |        |  |
|---------|--------------|-------|--------|--------|------------------|-------|--------|-------|-----------------|--------|--------|--------|--------|--|
| 12/93   | 10700        | 458   | 418    | 2696   | 52               | 347   | 2413   | 719   | 992             | 35     | 678    | 168    | 1724   |  |
| 12/94   | 10837 *      | 473 * | 406 *  | 2688 * | 53 !             | 361 * | 2508 * | 720 * | 990 *           | 34 *   | 672 *  | 156 *  | 1777 * |  |
| % 94/93 | 1.3 *        | 3.3 * | -2.9 * | -0.3 * | 1.3 !            | 4.0 * | 3.9 *  | 0.1 * | -0.2 *          | -1.9 * | -0.9 * | -7.1 * | 3.1 *  |  |

| 2       | BOVINES AGED BETWEEN 1 AND 2 YEARS |       |        |        | RINDER VON 1 BIS UNTER 2 JAHREN |       |        |        | BOVINS DE 1 A MOINS DE 2 ANS |       |       |        |        |  |
|---------|------------------------------------|-------|--------|--------|---------------------------------|-------|--------|--------|------------------------------|-------|-------|--------|--------|--|
| 12/93   | 16392                              | 661   | 393    | 3681   | 103                             | 465   | 3950   | 1504   | 1594                         | 44    | 957   | 226    | 2815   |  |
| 12/94   | 16794 *                            | 674 * | 386 *  | 3643 * | 106 !                           | 496 * | 4099 * | 1552 * | 1675 *                       | 46 *  | 985 * | 224 *  | 2909 * |  |
| % 94/93 | 2.5 *                              | 2.0 * | -1.8 * | -1.0 * | 2.5 !                           | 6.7 * | 3.8 *  | 3.2 *  | 5.1 *                        | 4.4 * | 2.9 * | -0.9 * | 3.3 *  |  |

| 2.1     | MALE   |       |       |        | MAENNLICHE |       |        |       | MALES |        |       |        |        |  |
|---------|--------|-------|-------|--------|------------|-------|--------|-------|-------|--------|-------|--------|--------|--|
| 12/93   | 6059   | 173   | 47    | 1481   | 51         | 54    | 1291   | 861   | 731   | 12     | 194   | 102    | 1061   |  |
| 12/94   | 6238 * | 182 * | 47 *  | 1485 * | 53 !       | 56 *  | 1369 * | 876 * | 771 * | 14 *   | 207 * | 101 *  | 1078 * |  |
| % 94/93 | 3.0 *  | 5.3 * | 0.0 * | 0.2 *  | 3.0 !      | 3.7 * | 6.0 *  | 1.6 * | 5.5 * | 15.4 * | 6.7 * | -1.0 * | 1.8 *  |  |

| 2.2     | FEMALE FOR SLAUGHTER |        |       |         | WEIBLICHE SCHLACHTTIERE |       |        |       | FEMELLES DE BOUCHERIE |       |         |       |       |  |
|---------|----------------------|--------|-------|---------|-------------------------|-------|--------|-------|-----------------------|-------|---------|-------|-------|--|
| 12/93   | 2076                 | 82     | 14    | 305     | 11                      | 30    | 323    | 319   | 166                   | 4     | 46      | 22    | 755   |  |
| 12/94   | 2053 *               | 80 *   | 14 *  | 255 *   | 11 !                    | 31 *  | 312 *  | 333 * | 192 *                 | 4 *   | 33 *    | 22 *  | 767 * |  |
| % 94/93 | -1.1 *               | -2.2 * | 0.0 * | -16.6 * | -1.1 !                  | 3.3 * | -3.4 * | 4.4 * | 15.7 *                | 7.2 * | -28.3 * | 0.0 * | 1.6 * |  |

| 2.3     | OTHER FEMALE |       |        |        | ANDERE WEIBLICHE |       |        |       | AUTRES FEMELLES |        |       |        |        |  |
|---------|--------------|-------|--------|--------|------------------|-------|--------|-------|-----------------|--------|-------|--------|--------|--|
| 12/93   | 8257         | 406   | 332    | 1894   | 41               | 381   | 2336   | 324   | 697             | 29     | 717   | 102    | 999    |  |
| 12/94   | 8504 *       | 412 * | 325 *  | 1904 * | 42 !             | 409 * | 2418 * | 344 * | 712 *           | 28 *   | 745 * | 101 *  | 1064 * |  |
| % 94/93 | 3.0 *        | 1.4 * | -2.1 * | 0.5 *  | 3.0 !            | 7.3 * | 3.5 *  | 6.1 * | 2.2 *           | -0.6 * | 3.9 * | -1.0 * | 6.5 *  |  |



3/17/95

BOVINE LIVESTOCK IN DECEMBER  
1000 HEADRINDERBESTAND IN DEZEMBER  
1000 STUECKEFFECTIFS BOVINS EN DECEMBRE  
1000 TETES

|  | EUR 12 | B | DK | D | GR | E | F | IRL | I | L | NL | P | UK |
|--|--------|---|----|---|----|---|---|-----|---|---|----|---|----|
|--|--------|---|----|---|----|---|---|-----|---|---|----|---|----|

| 3       | BOVINES OF 2 YEARS AND OVER |        |        |        | RINDER VON 2 JAHREN UND DARÜBER |        |         |        | BOVINS DE 2 ANS ET PLUS |        |        |        |        |
|---------|-----------------------------|--------|--------|--------|---------------------------------|--------|---------|--------|-------------------------|--------|--------|--------|--------|
| 12/93   | 39104                       | 1523   | 930    | 6892   | 331                             | 3034   | 11079   | 3239   | 3531                    | 104    | 2101   | 703    | 5636   |
| 12/94   | 38887 *                     | 1512 * | 928 *  | 6866 * | 328                             | 2995 * | 11264 * | 3301 * | 3259 *                  | 103 *  | 2035 * | 670 *  | 5626 * |
| % 94/93 | -0.6 *                      | -0.8 * | -0.2 * | -0.4 * | -0.8                            | -1.3 * | 1.7 *   | 1.9 *  | -7.7 *                  | -0.9 * | -3.1 * | -4.6 * | -0.2 * |

| 3.1     | MALE   |       |        |        | MAENNLICHE |       |       |       | MÂLES  |       |        |        |     |
|---------|--------|-------|--------|--------|------------|-------|-------|-------|--------|-------|--------|--------|-----|
| 12/93   | 1930   | 38    | 8      | 151    | 5          | 76    | 529   | 589   | 82     | 4     | 22     | 36     | 390 |
| 12/94   | 1988 * | 42 *  | 10 *   | 148 *  | 5          | 76 *  | 538 * | 615 * | 77 *   | 4 *   | 26 *   | 34 *   | 393 |
| % 94/93 | 2.0 *  | 9.2 * | 25.0 * | -1.7 * | 2.0        | 0.0 * | 1.7 * | 4.5 * | -6.1 * | 5.5 * | 18.2 * | -5.6 * | 0.8 |

| 3.2     | HEIFERS |        |       |       | FÄRSEN |       |        |       | GENISSES |        |         |        |       |
|---------|---------|--------|-------|-------|--------|-------|--------|-------|----------|--------|---------|--------|-------|
| 12/93   | 5343    | 303    | 94    | 887   | 20     | 173   | 1984   | 448   | 451      | 22     | 207     | 53     | 700   |
| 12/94   | 5318 *  | 300 *  | 96 *  | 891 * | 20     | 184 * | 2013 * | 460 * | 390 *    | 21 *   | 180 *   | 50 *   | 714 * |
| % 94/93 | -0.5 *  | -1.1 * | 2.1 * | 0.5 * | -0.5   | 6.4 * | 1.5 *  | 2.6 * | -13.5 *  | -4.0 * | -13.0 * | -4.8 * | 2.0 * |

| 3.2.1   | HEIFERS FOR SLAUGHTER |        |       |         | ZUM SCHLACHTEN |       |        |       | GENISSES DE BOUCHERIE |        |         |        |        |
|---------|-----------------------|--------|-------|---------|----------------|-------|--------|-------|-----------------------|--------|---------|--------|--------|
| 12/93   | 869                   | 92     | 6     | 62      | 3              | 5     | 297    | 164   | 31                    | 3      | 25      | 11     | 171    |
| 12/94   | 877 *                 | 90 *   | 6 *   | 51 *    | 3              | 5 *   | 291 *  | 166 * | 25 *                  | 3 *    | 17 *    | 10 *   | 209 *  |
| % 94/93 | 0.9 *                 | -2.3 * | 0.0 * | -17.0 * | 0.9            | 0.0 * | -2.0 * | 1.6 * | -19.4 *               | 25.8 * | -32.0 * | -5.0 * | 22.2 * |

| 3.2.2   | OTHER HEIFERS |        |       |       | ANDERE FAERSEN |       |        |       | AUTRES GENISSES |        |         |        |        |
|---------|---------------|--------|-------|-------|----------------|-------|--------|-------|-----------------|--------|---------|--------|--------|
| 12/93   | 4473          | 211    | 88    | 825   | 17             | 168   | 1687   | 285   | 420             | 19     | 182     | 42     | 529    |
| 12/94   | 4441 *        | 209 *  | 90 *  | 840 * | 17             | 179 * | 1722 * | 293 * | 365 *           | 18 *   | 163 *   | 40 *   | 505 *  |
| % 94/93 | -0.7 *        | -1.1 * | 2.3 * | 1.8 * | -0.7           | 6.5 * | 2.1 *  | 3.1 * | -13.1 *         | -7.9 * | -10.4 * | -4.8 * | -4.5 * |

| 3.3     | COWS    |        |        |        | KUEHE |        |        |        | VACHES |        |        |        |        |
|---------|---------|--------|--------|--------|-------|--------|--------|--------|--------|--------|--------|--------|--------|
| 12/93   | 31831   | 1182   | 828    | 5854   | 306   | 2785   | 8566   | 2202   | 2998   | 79     | 1872   | 614    | 4546   |
| 12/94   | 31597 * | 1171 * | 818 *  | 5826 * | 303   | 2735 * | 8713 * | 2226 * | 2792 * | 78 *   | 1829 * | 586 *  | 4519 * |
| % 94/93 | -0.7 *  | -0.9 * | -1.2 * | -0.5 * | -0.8  | -1.8 * | 1.7 *  | 1.1 *  | -6.9 * | -0.4 * | -2.3 * | -4.6 * | -0.6 * |

| 3.3.1   | DAIRY COWS |        |       |        | MILCHKUEHE |        |        |        | VACHES LAITIERES |        |        |        |        |
|---------|------------|--------|-------|--------|------------|--------|--------|--------|------------------|--------|--------|--------|--------|
| 12/93   | 21502      | 703    | 711   | 5301   | 219        | 1403   | 4615   | 1274   | 2287             | 51     | 1777   | 375    | 2786   |
| 12/94   | 21181 *    | 696 *  | 717 * | 5231 * | 216        | 1339 * | 4745 * | 1269 * | 2070 *           | 49 *   | 1757 * | 356 *  | 2736 * |
| % 94/93 | -1.5 *     | -1.0 * | 0.8 * | -1.3 * | -1.5       | -4.6 * | 2.8 *  | -0.4 * | -9.5 *           | -3.9 * | -1.1 * | -5.1 * | -1.8 * |

| 3.3.2   | OTHER COWS |        |         |       | ANDERE KUEHE |        |        |       | AUTRES VACHES |       |         |        |        |
|---------|------------|--------|---------|-------|--------------|--------|--------|-------|---------------|-------|---------|--------|--------|
| 12/93   | 10329      | 479    | 117     | 553   | 87           | 1382   | 3951   | 928   | 711           | 28    | 95      | 239    | 1760   |
| 12/94   | 10420 *    | 475 *  | 105 *   | 595 * | 88           | 1396 * | 3968 * | 957 * | 722 *         | 29 *  | 72 *    | 230 *  | 1783 * |
| % 94/93 | 0.9 *      | -0.7 * | -10.3 * | 7.6 * | 0.9          | 1.0 *  | 0.4 *  | 3.1 * | 1.5 *         | 5.9 * | -24.2 * | -3.8 * | 1.3 *  |

\* DATA PROVISIONAL OR ESTIMATED  
- : UNAVAILABLE  
! ESTIMATED BY EUROSTAT

\* VORLÄUFIGE ODER GESCHÄTZTE ANGABE  
- : NICHT VERFÜGBAR  
! VON EUROSTAT GESCHÄTZT

\* DONNÉE PROVISOIRE OU ESTIMÉE  
- : DONNÉE NON DISPONIBLE  
! ESTIMATION EUROSTAT



3/17/95

## BRUTTOEIGENERZEUGUNG AN RINDERN

## GROSS INDIGENOUS PRODUCTION OF CATTLE

## PRODUCTION INDIGENE BRUTE DE BOVINS

|  | 1000 HEAD |   |    |   | 1000 STUECK |   |   |     |   |   |    | 1000 TETES |    |
|--|-----------|---|----|---|-------------|---|---|-----|---|---|----|------------|----|
|  | EUR 12    | B | DK | D | GR          | E | F | IRL | I | L | NL | P          | UK |

|                | TOTAL          |                |                |                | INSGESAMT     |               |                |               |                |               |               | TOTAL          |                |
|----------------|----------------|----------------|----------------|----------------|---------------|---------------|----------------|---------------|----------------|---------------|---------------|----------------|----------------|
| 1-6            | 14447          | 569            | 400            | 2843           | 142           | 977           | 3744           | 899           | 1863           | 13 *          | 1070          | 261 *          | 1666           |
| 7-12           | 14287          | 567            | 435            | 2793           | 147 *         | 1006          | 3799           | 1071 *        | 1466           | 13 *          | 955           | 245 *          | 1789           |
| <b>1993</b>    | <b>28734 *</b> | <b>1136 *</b>  | <b>835</b>     | <b>5636</b>    | <b>290 *</b>  | <b>1983</b>   | <b>7543</b>    | <b>1970 *</b> | <b>3329</b>    | <b>26 *</b>   | <b>2025</b>   | <b>506 *</b>   | <b>3455</b>    |
| 1-6            | 13745 *        | 677 *          | 412 *          | 2643 *         | 146 *         | 872           | 3532           | 803 *         | 1739 *         | 13 *          | 981 *         | 187 *          | 1740 *         |
| 7-12           | 13952 *        | 640 *          | 407 *          | 2651 *         | 156 *         | 932 *         | 3686 *         | 1037 *        | 1463 *         | 13 *          | 874 *         | 184 *          | 1908 *         |
| <b>1994</b>    | <b>27696 *</b> | <b>1317 *</b>  | <b>819</b>     | <b>5294 *</b>  | <b>302 *</b>  | <b>1804 *</b> | <b>7218 *</b>  | <b>1840 *</b> | <b>3202 *</b>  | <b>26 *</b>   | <b>1855 *</b> | <b>371 *</b>   | <b>3648 *</b>  |
| 1-6            | 13588 *        | 655 *          | 390 *          | 2570 *         | 145 *         | 928 *         | 3498 *         | 837 *         | 1635 *         | 13 *          | 1015 *        | 180 *          | 1722 *         |
| 7-12           | 14008 *        | 625 *          | 395 *          | 2635 *         | 157 *         | 1019 *        | 3685 *         | 1051 *        | 1495 *         | 13 *          | 910 *         | 177 *          | 1846 *         |
| <b>1995</b>    | <b>27596 *</b> | <b>1280 *</b>  | <b>785</b>     | <b>5205 *</b>  | <b>302 *</b>  | <b>1947 *</b> | <b>7183 *</b>  | <b>1888 *</b> | <b>3130 *</b>  | <b>26 *</b>   | <b>1925 *</b> | <b>357 *</b>   | <b>3568 *</b>  |
| % 1-6          | -1.14 *        | -3.25 *        | -5.34 *        | -2.76 *        | -0.27 *       | 6.42 *        | -0.96 *        | 4.23          | -5.98 *        | 0.00 *        | 3.47 *        | -3.74 *        | -1.03 *        |
| % 7-12         | 0.41 *         | -2.34 *        | -2.95 *        | -0.60 *        | 0.39 *        | 9.33 *        | -0.03 *        | 1.35          | 2.19 *         | 0.00 *        | 4.12 *        | -3.80 *        | -3.25 *        |
| <b>% 95/94</b> | <b>-0.36 *</b> | <b>-2.81 *</b> | <b>-4.15 *</b> | <b>-1.68 *</b> | <b>0.07 *</b> | <b>7.93 *</b> | <b>-0.48 *</b> | <b>2.61 *</b> | <b>-2.25 *</b> | <b>0.00 *</b> | <b>3.77 *</b> | <b>-3.77 *</b> | <b>-2.19 *</b> |

| 1              | CALVES         |                |               |                | KALBER         |                |                |                 |                |               |               | VEAUX          |                 |
|----------------|----------------|----------------|---------------|----------------|----------------|----------------|----------------|-----------------|----------------|---------------|---------------|----------------|-----------------|
| 1-6            | 3158           | 184            | 23            | 280            | 27             | 34             | 1428           | 47              | 452            | 0 *           | 471           | 38             | 174             |
| 7-12           | 2738           | 166            | 31            | 231            | 41 *           | 33             | 1436           | 21 *            | 9              | 1 *           | 403           | 39             | 327             |
| <b>1993</b>    | <b>5896</b>    | <b>350</b>     | <b>54</b>     | <b>511</b>     | <b>68 *</b>    | <b>67</b>      | <b>2864</b>    | <b>68 *</b>     | <b>461</b>     | <b>1 *</b>    | <b>874</b>    | <b>77</b>      | <b>501</b>      |
| 1-6            | 3079 *         | 288 *          | 40 *          | 288 *          | 26 *           | 31             | 1350           | 52 *            | 314 *          | 0 *           | 420 *         | 27 *           | 242 *           |
| 7-12           | 2706 *         | 228 *          | 40 *          | 255 *          | 28 *           | 12 *           | 1462 *         | 15 *            | 13 *           | 1 *           | 360 *         | 25 *           | 267 *           |
| <b>1994</b>    | <b>5785 *</b>  | <b>516 *</b>   | <b>80 *</b>   | <b>543 *</b>   | <b>55 *</b>    | <b>43 *</b>    | <b>2812 *</b>  | <b>67 *</b>     | <b>327 *</b>   | <b>1 *</b>    | <b>780 *</b>  | <b>52 *</b>    | <b>509 *</b>    |
| 1-6            | 2903 *         | 260 *          | 40 *          | 260 *          | 27 *           | 35 *           | 1321 *         | 43 *            | 260 *          | 0 *           | 435 *         | 26 *           | 196 *           |
| 7-12           | 2635 *         | 205 *          | 40 *          | 240 *          | 27 *           | 16 *           | 1436 *         | 12 *            | 50 *           | 1 *           | 370 *         | 24 *           | 214 *           |
| <b>1995</b>    | <b>5538 *</b>  | <b>465 *</b>   | <b>80 *</b>   | <b>500 *</b>   | <b>54 *</b>    | <b>51 *</b>    | <b>2757 *</b>  | <b>55 *</b>     | <b>310 *</b>   | <b>1 *</b>    | <b>805 *</b>  | <b>50 *</b>    | <b>410 *</b>    |
| % 1-6          | -5.71 *        | -8.72 *        | 0.00 *        | -9.72 *        | 0.83 *         | 12.90 *        | -2.15 *        | -17.31          | -17.20 *       | 0.00 *        | 3.57 *        | -3.70 *        | -19.01 *        |
| % 7-12         | -2.62 *        | -10.09 *       | 0.00 *        | -5.88 *        | -2.94 *        | 33.33 *        | -1.78 *        | -20.00          | 284.62 *       | 0.00 *        | 2.78 *        | -4.00 *        | -19.85 *        |
| <b>% 95/94</b> | <b>-4.26 *</b> | <b>-9.88 *</b> | <b>0.00 *</b> | <b>-7.92 *</b> | <b>-1.12 *</b> | <b>18.60 *</b> | <b>-1.96 *</b> | <b>-17.91 *</b> | <b>-5.20 *</b> | <b>0.00 *</b> | <b>3.21 *</b> | <b>-3.85 *</b> | <b>-19.45 *</b> |

| 2              | ADULT CATTLE   |               |                |                | GROSS RINDER  |               |               |               |                |               |               | GROS BOVINS    |               |
|----------------|----------------|---------------|----------------|----------------|---------------|---------------|---------------|---------------|----------------|---------------|---------------|----------------|---------------|
| 1-6            | 11288          | 385           | 377            | 2563           | 115           | 943           | 2316          | 852           | 1411           | 12 *          | 599           | 223 *          | 1492          |
| 7-12           | 11549          | 401           | 404            | 2562           | 106 *         | 973           | 2363          | 1050          | 1457           | 13 *          | 552           | 206 *          | 1462          |
| <b>1993</b>    | <b>22837</b>   | <b>786</b>    | <b>781</b>     | <b>5125</b>    | <b>221 *</b>  | <b>1916</b>   | <b>4679</b>   | <b>1902</b>   | <b>2868</b>    | <b>25 *</b>   | <b>1151</b>   | <b>429 *</b>   | <b>2954</b>   |
| 1-6            | 10666 *        | 389 *         | 372 *          | 2355 *         | 119 *         | 841           | 2182          | 751 *         | 1425 *         | 12 *          | 561 *         | 160 *          | 1498 *        |
| 7-12           | 11246 *        | 412 *         | 367 *          | 2396 *         | 128 *         | 920 *         | 2224 *        | 1022 *        | 1450 *         | 13 *          | 514 *         | 159 *          | 1641 *        |
| <b>1994</b>    | <b>21911 *</b> | <b>801 *</b>  | <b>739 *</b>   | <b>4751 *</b>  | <b>247 *</b>  | <b>1761 *</b> | <b>4406 *</b> | <b>1773 *</b> | <b>2875 *</b>  | <b>25 *</b>   | <b>1075 *</b> | <b>319 *</b>   | <b>3139 *</b> |
| 1-6            | 10685 *        | 395 *         | 350 *          | 2310 *         | 119 *         | 893           | 2177 *        | 794 *         | 1375 *         | 12 *          | 580 *         | 154 *          | 1526 *        |
| 7-12           | 11373 *        | 420 *         | 355 *          | 2395 *         | 129 *         | 1003 *        | 2249 *        | 1039 *        | 1445 *         | 13 *          | 540 *         | 153 *          | 1632 *        |
| <b>1995</b>    | <b>22058 *</b> | <b>815 *</b>  | <b>706 *</b>   | <b>4705 *</b>  | <b>248 *</b>  | <b>1896 *</b> | <b>4426 *</b> | <b>1833 *</b> | <b>2820 *</b>  | <b>25 *</b>   | <b>1120 *</b> | <b>307 *</b>   | <b>3158 *</b> |
| % 1-6          | 0.18 *         | 1.54 *        | -5.91 *        | -1.91 *        | -0.51 *       | 6.18          | -0.23 *       | 5.73          | -3.51 *        | 0.00 *        | 3.39 *        | -3.75 *        | 1.87 *        |
| % 7-12         | 1.13 *         | 1.94 *        | -3.27 *        | -0.04 *        | 1.13 *        | 9.02 *        | 1.12 *        | 1.66          | -0.34 *        | 0.00 *        | 5.06 *        | -3.77 *        | -0.55 *       |
| <b>% 95/94</b> | <b>0.67 *</b>  | <b>1.75 *</b> | <b>-4.60 *</b> | <b>-0.97 *</b> | <b>0.34 *</b> | <b>7.67 *</b> | <b>0.45 *</b> | <b>3.38 *</b> | <b>-1.91 *</b> | <b>0.00 *</b> | <b>4.19 *</b> | <b>-3.76 *</b> | <b>0.61 *</b> |



3/17/95

## BRUTTOEIGENERZEUGUNG AN RINDERN

## GROSS INDIGENOUS PRODUCTION OF CATTLE

## PRODUCTION INDIGENE BRUTE DE BOVINS

| 1000 HEAD |        | 1000 STUECK |    |   |    |   |   |     |   |   |    | 1000 TETES |    |
|-----------|--------|-------------|----|---|----|---|---|-----|---|---|----|------------|----|
|           | EUR 12 | B           | DK | D | GR | E | F | IRL | I | L | NL | P          | UK |

| 2.1 HEIFERS |        | FAERSEN |        |         |        |       |        |      |       |       |        | GENISSES |       |
|-------------|--------|---------|--------|---------|--------|-------|--------|------|-------|-------|--------|----------|-------|
| 1-6         | 2262   | 51      | 35     | 436     | 16     | 295   | 389    | 241  | 236   | 4*    | 64     | 49*      | 446   |
| 7-12        | 2186   | 46      | 31     | 419     | 16     | 306   | 376    | 247  | 206   | 4*    | 57     | 42*      | 437   |
| 1993        | 4448   | 97      | 66     | 855     | 32     | 601   | 765    | 488  | 442   | 7*    | 121    | 91*      | 883   |
| 1-6         | 2128*  | 46*     | 33*    | 395*    | 16*    | 304   | 350    | 217  | 234*  | 4*    | 61*    | 31*      | 437   |
| 7-12        | 2186*  | 40*     | 27*    | 387*    | 16*    | 320*  | 360*   | 274  | 205*  | 4*    | 54*    | 28*      | 472   |
| 1994        | 4314*  | 86*     | 60*    | 782*    | 32*    | 624*  | 710*   | 491* | 439*  | 7*    | 118*   | 68*      | 908   |
| 1-6         | 2095*  | 45*     | 30*    | 330*    | 16*    | 312*  | 344*   | 225  | 250*  | 4*    | 60*    | 30*      | 450*  |
| 7-12        | 2224*  | 40*     | 25*    | 380*    | 16*    | 330*  | 353*   | 283  | 220*  | 4*    | 60*    | 27*      | 486*  |
| 1995        | 4319*  | 85*     | 55*    | 710*    | 32*    | 642*  | 697*   | 508* | 470*  | 7*    | 120*   | 57*      | 836*  |
| % 1-6       | -1.51* | -2.17*  | -9.09* | -16.46* | -0.88* | 2.63* | -1.71* | 3.69 | 6.84* | 0.00* | -1.64* | -3.23*   | 2.97* |
| % 7-12      | 1.71*  | 0.00*   | -7.41* | -1.81*  | 2.31*  | 3.13* | -1.94* | 3.28 | 7.32* | 0.00* | 11.11* | -3.57*   | 2.97* |
| % 95/94     | 0.12*  | -1.16*  | -8.33* | -9.21*  | 0.70*  | 2.88* | -1.83* | 3.46 | 7.06* | 0.00* | 4.36*  | -3.39*   | 2.87* |

| 2.2 COWS |       | KUEHE  |        |       |        |       |       |       |        |       |       | VACHES |         |
|----------|-------|--------|--------|-------|--------|-------|-------|-------|--------|-------|-------|--------|---------|
| 1-6      | 3468* | 181    | 142    | 864   | 19     | 140   | 950   | 149   | 328    | 5*    | 368   | 46*    | 276     |
| 7-12     | 3526* | 183    | 172    | 850   | 20*    | 160   | 926   | 159   | 357    | 5*    | 335   | 44*    | 315     |
| 1993     | 6994* | 364    | 314    | 1714  | 39*    | 300   | 1876  | 308   | 685    | 9*    | 703   | 90*    | 591     |
| 1-6      | 3399* | 183*   | 157    | 820   | 18*    | 155   | 895   | 147   | 333*   | 5*    | 344   | 30*    | 313*    |
| 7-12     | 3431* | 173*   | 160*   | 784*  | 19*    | 145*  | 857*  | 178   | 371*   | 5*    | 316*  | 24*    | 400*    |
| 1994     | 6831* | 366*   | 317*   | 1604* | 36*    | 300*  | 1762* | 325*  | 704*   | 9*    | 680*  | 64*    | 713*    |
| 1-6      | 3399* | 179*   | 145*   | 820*  | 18*    | 164*  | 896*  | 151   | 300*   | 5*    | 350*  | 29*    | 343*    |
| 7-12     | 3441* | 187*   | 155*   | 815*  | 19*    | 157*  | 874*  | 181   | 350*   | 5*    | 320*  | 23*    | 355*    |
| 1995     | 6840* | 368*   | 309*   | 1636* | 37*    | 321*  | 1770* | 332*  | 660*   | 9*    | 670*  | 62*    | 698*    |
| % 1-6    | 0.00* | -2.19* | -7.64* | 0.00* | -0.11* | 5.81* | 0.11* | 2.72  | -9.91* | 0.00* | 1.74* | -3.33* | 9.58*   |
| % 7-12   | 0.28* | 8.09*  | -3.13* | 3.95* | 2.98*  | 8.28* | 1.98* | 1.69  | -5.66* | 0.00* | 1.27* | -4.17* | -11.25* |
| % 95/94  | 0.14* | 2.81*  | -5.36* | 1.83* | 1.48*  | 7.00* | 1.03* | 2.15* | -7.67* | 0.00* | 1.62* | -3.70* | -2.10*  |

| 2.3 BULLS AND BULLOCKS |        | BULLEN UND OCHSEN |        |        |        |        |       |       |        |       |        | TAUREAUX ET BOEUFs |        |
|------------------------|--------|-------------------|--------|--------|--------|--------|-------|-------|--------|-------|--------|--------------------|--------|
| 1-6                    | 5559   | 153               | 200    | 1263   | 80     | 508    | 977   | 462   | 847    | 4*    | 167    | 128*               | 770    |
| 7-12                   | 5837   | 172               | 201    | 1293   | 70*    | 507    | 1061  | 644   | 894    | 5*    | 160    | 120*               | 710    |
| 1993                   | 11396  | 325               | 401    | 2556   | 150*   | 1015   | 2038  | 1106  | 1741   | 9*    | 327    | 248*               | 1480   |
| 1-6                    | 5139*  | 160*              | 182    | 1140   | 86*    | 382    | 937   | 387   | 858*   | 4*    | 156*   | 99*                | 748*   |
| 7-12                   | 5628*  | 199*              | 180*   | 1225*  | 93*    | 455*   | 1007* | 570   | 874*   | 5*    | 144*   | 107*               | 769*   |
| 1994                   | 10767* | 359*              | 382*   | 2365*  | 179*   | 837*   | 1944* | 967*  | 1732*  | 9*    | 300*   | 206*               | 1617*  |
| 1-6                    | 5190*  | 171*              | 175*   | 1160*  | 85*    | 417*   | 937*  | 418   | 825*   | 4*    | 170*   | 95*                | 733*   |
| 7-12                   | 5709*  | 183*              | 175*   | 1200*  | 94*    | 516*   | 1022* | 575   | 875*   | 5*    | 160*   | 103*               | 791*   |
| 1995                   | 10898* | 364*              | 350*   | 2380*  | 179*   | 933*   | 1969* | 983*  | 1700*  | 9*    | 330*   | 198*               | 1624*  |
| % 1-6                  | 1.00*  | 6.88*             | -3.85* | 1.75*  | -0.52* | 9.16*  | 0.00* | 8.01  | -3.85* | 0.00* | 8.97*  | -4.04*             | -2.01* |
| % 7-12                 | 1.43*  | -3.02*            | -2.78* | -2.04* | 0.56*  | 13.41* | 1.49* | 0.88  | 0.11*  | 0.00* | 11.11* | -3.74*             | 2.86*  |
| % 95/94                | 1.23*  | 1.39*             | -3.31* | -0.21* | 0.04*  | 11.47* | 0.77* | 3.76* | -1.85* | 0.00* | 10.00* | -3.88*             | 0.46*  |

\* DATA PROVISIONAL OR ESTIMATED

- UNAVAILABLE

! ESTIMATED BY EUROSTAT

\* VORLÄUFIGE ODER GESCHÄTZTE ANGABE

- NICHT VERFÜGBAR

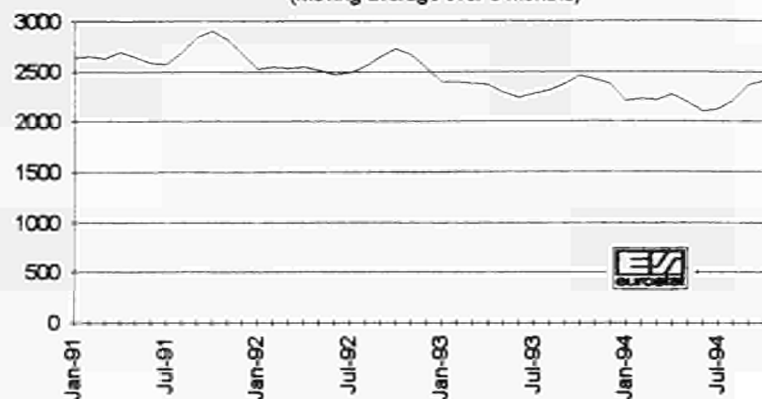
! VON EUROSTAT GESCHÄTZT

\* DONNEE PROVISoire OU ESTIMEE

- DONNEE NON DISPONIBLE

! ESTIMATION EUROSTAT

**Cattle slaughterings in EU from 1991 to 1994**  
 Thousand head / month  
 (Moving average over 3 months)



After several years of running down cattle stocks, this could mark a real reversal of the cyclical trend.

While in most countries there is a new boost in the rearing of male animals for slaughter, heifers are no longer really in favour with livestock farmers, except in the United Kingdom and Ireland, where numbers have recovered to the 1992 level. The veal calf sector, which is after all very sensitive to demand, is subject to contrasting trends. In France, where this is traditionally an important sector, the number of animals reared dropped considerably, despite a marked upturn in the first half of the year. In the Netherlands, where the rearing of calves is also a major sector, production is holding up well.

For 1995, **gross domestic production** of cattle, measured in head, should show a slight fall. The supply of calves should fall by about 4%, unless there is sufficient recovery in demand to revive production in the course of the year


**The ball is in the consumer's court**

Slaughterings of adult bovine animals should remain stable overall, but further significant falls are expected in Italy, Denmark and Portugal, whereas in Spain production forecasts are on a definite upward

trend. This is also the case in Sweden, where an increase of nearly 13% is expected for this first year of membership in the Union. Overall, in view of the regular increase in carcass weight, this should result in a increase of about 1% in the quantity of meat available for consumption, both in the former twelve-member Union and in the fifteen-member Union.

Today, with prices holding up above the intervention level for several months now and stocks which have fallen below 50 000 tonnes, the beef and veal market seems to be in good health. Its future equilibrium is bound to depend very much on the level of demand, which remains sluggish here and there. The ball is thus in the consumer's court, and it is likely that economic recovery, which will generate additional purchasing power, will provide a fillip.

**They were Twelve, now they are Fifteen...**

|   |  | Data 1993-1994 |         |        |          |        |
|---|--|----------------|---------|--------|----------|--------|
|  |  | Austria        | Finland | Sweden | ex-Eur12 | Eur15  |
| <b>Total cattle (1000 head)</b>   |  | 2329           | 1230    | 1826   | 78746    | 85957  |
| <b>Dairy cows</b>   |  | 810            | 413     | 509    | 21781    | 23513  |
| <b>Suckler cows</b>   |  | 90             | 34      | 165    | 10420    | 10709  |
| <b>Gross Indigenous Production of cattle (1000 head)</b>                            |  | 829            | 433     | 519    | 27696    | 29477  |
| <b>Milk production (1000 T)</b>   |  | 3270           | 2213    | 3342   | 114000   | 122825 |