

### Gas prices for EU households on 1 July 1995: relative stability

These comments are based on prices expressed in purchasing power standard (PPS). Tables and graphics also give the prices in ECU, which allows comparison in both units.

A study of the variations in VAT-excluded prices from 1 January 1995 to 1 July 1995 reveals that:

- The highest rises were recorded in Italy where they affected all consumers and ranked between 4.9% and 9.9%; the mainly affected Rome. The only exception being prices for D<sub>1</sub>\* in Milano which fell by -4.9%;
- In Luxembourg, the rise is between 0.3% (D<sub>1</sub>) and 0.8% (D<sub>4</sub>); In Finland, prices for D<sub>3</sub> increased (3.2%);
- In Germany, prices fell in Hamburg, Hannover, Frankfurt and mainly Berlin for D<sub>2</sub> (-14.2%), D<sub>3</sub> (-6.9%), D<sub>3-b</sub> (-13.7%) and D<sub>4</sub> (-15.3%) whereas those of D<sub>1</sub> increased by 15.1%;
- In the Netherlands, in Rotterdam, prices fell by -1.7% (D<sub>1</sub>) to -3.2% (D<sub>4</sub>);
- In France, the fall was between -0.9% and -1.1% in Paris, and between -0.8% and -1.8% in Strasbourg;
- In Belgium, prices for D<sub>1</sub> and D<sub>2</sub> increased (0.3%) whereas those of D<sub>3</sub> (-0.1%) D<sub>3-b</sub> (-0.2%) and D<sub>4</sub> (-0.4%) decreased;
- In Ireland, Spain and in the United-Kingdom, prices remained unchanged.

\* see table below for standard consumers definition.

\*\*\*\*\*


Manuscript completed on = 11.12.1995

For further information please contact:  
Eurostat, L-2920 Luxembourg, tel. 4301-32040 Fax: 4301-34771

Price (excl. VAT) in Luxembourg: Subscription ECU 240,  
single copy ECU 6

Catalogue number: CA-NL-96-002-EN-C

Five household standard consumers, coded D<sub>1</sub> to D<sub>4</sub>, were chosen:

Annual consumption						
	D <sub>1</sub>	8.37	GJ	(i.e.	2 326	kWh)
	D <sub>2</sub> <sup>(1)</sup>	16.74	GJ	(i.e.	4 652	kWh)
	D <sub>3</sub>	83.70	GJ	(i.e.	23 260	kWh)
	D <sub>3b</sub>	125.60	GJ	(i.e.	34 890	kWh)
	D <sub>4</sub>	1047.00	GJ	(i.e.	290 750	kWh)

(1) For the United Kingdom there is an additional standard consumer, i.e. D<sub>2-b</sub> 33.49 GJ (9 300 kWh or 8 Gcal).

Prices for the standard consumers are given in national currencies, PPS (purchasing power standard as at 29 March for 1995) and in ECU (average value for July 1995).

#### Conversion table in PPS and ECU


1 PPS =

<b>B</b> (BFR) 40.27	<b>E</b> (PTA) 130.37	<b>L</b> (LFR) 43.11	<b>FIN</b> (FMK) 6.65
<b>DK</b> (DKR) 9.42	<b>F</b> (FF) 7.05	<b>NL</b> (HFL) 2.29	<b>S</b> (SKR) 10.62
<b>D</b> (DM) 2.28	<b>IRL</b> (DM) 0.71	<b>A</b> (ÖS) 15.25	<b>UK</b> (UKL) 0.69
<b>GR</b> (DR) 231.60	<b>I</b> (LIT) 1693.38	<b>P</b> (ESC) 133.25	<b>N</b> (NKR) 9.34

1 ECU =

<b>B</b> (BFR) 38.41	<b>E</b> (PTA) 161.01	<b>L</b> (LFR) 38.41	<b>FIN</b> (FMK) 5.71
<b>DK</b> (DKR) 7.27	<b>F</b> (FF) 6.50	<b>NL</b> (HFL) 2.09	<b>S</b> (SKR) 9.65
<b>D</b> (DM) 1.86	<b>IRL</b> (DM) 0.82	<b>A</b> (ÖS) 13.14	<b>UK</b> (UKL) 0.84
<b>GR</b> (DR) 303.11	<b>I</b> (LIT) 2164.71	<b>P</b> (ESC) 196.27	<b>N</b> (NKR) 8.30

NATURGASPREISE FUER HAUSHALTE / NATURAL GAS PRICES FOR HOUSEHOLDS / PRIX DU GAZ NATUREL POUR USAGES DOMESTIQUES


JULI 01 JULY 1995 JUILLET	NATIONALE WAERHUNG NATIONAL CURRENCY / GJ MONNAIE NATIONALE			KKS	PPS	SPA / GJ	ECUS / GJ			
	STEUERN INBEGR. WITH TAXES COMPRISES	OHNE MWST. VAT EXCL. HORS TVA	OHNE STEUERN TAXES EXCL. HORS TAXES				STEUERN INBEGR. WITH TAXES COMPRISES	OHNE MWST. VAT EXCL. HORS TVA	OHNE STEUERN TAXES EXCL. HORS TAXES	
BELGIQUE (BFR)										
BRUXELLES										
D1	642.7	533.4	519.7	15.96	13.24	12.90	16.73	13.88	13.53	
D2	591.9	491.2	477.5	14.70	12.20	11.86	15.41	12.79	12.43	
D3	342.2	284.0	270.3	8.50	7.05	6.71	8.91	7.39	7.04	
D3-B	325.5	270.2	256.5	8.08	6.71	6.37	8.47	7.03	6.68	
D4	270.5	224.5	210.8	6.72	5.57	5.23	7.04	5.84	5.49	
DEUTSCHLAND (DM)										
DUESSELDORF										
D1	35.78	31.11	30.11	15.67	13.62	13.18	19.16	16.66	16.12	
D2	26.83	23.33	22.33	11.75	10.21	9.78	14.36	12.49	11.95	
D3	17.12	14.89	13.89	7.50	6.52	6.08	9.17	7.97	7.44	
D3-B	16.10	14.00	13.00	7.05	6.13	5.69	8.62	7.50	6.96	
D4	12.87	11.19	10.19	5.63	4.90	4.46	6.89	5.99	5.46	
HAMBURG										
D1	36.61	31.83	30.83	16.03	13.94	13.50	19.60	17.04	16.51	
D2	24.25	21.08	20.08	10.62	9.23	8.79	12.98	11.29	10.75	
D3	16.32	14.19	13.19	7.15	6.21	5.77	8.74	7.60	7.06	
D3-B	15.65	13.61	12.61	6.85	5.96	5.52	8.38	7.29	6.75	
D4	13.29	11.56	10.56	5.82	5.06	4.62	7.12	6.19	5.65	
HANNOVER										
D1	32.55	28.31	27.31	14.25	12.39	11.96	17.43	15.16	14.62	
D2	25.52	22.19	21.19	11.17	9.72	9.28	13.66	11.88	11.34	
D3	16.20	14.08	13.08	7.09	6.16	5.73	8.67	7.54	7.00	
D3-B	15.33	13.33	12.33	6.71	5.84	5.40	8.21	7.14	6.60	
D4	13.70	11.92	10.92	6.00	5.22	4.78	7.33	6.38	5.85	
DORTMUND										
D1	37.76	32.83	31.83	16.53	14.37	13.94	20.22	17.58	17.04	
D2	26.23	22.81	21.81	11.48	9.99	9.55	14.04	12.21	11.68	
D3	15.75	13.69	12.69	6.90	5.99	5.56	8.43	7.33	6.79	
D3-B	14.53	12.64	11.64	6.36	5.53	5.10	7.78	6.77	6.23	
D4	11.69	10.17	9.17	5.12	4.45	4.01	6.25	5.44	4.91	
FRANKFURT/M										
D1	35.52	30.89	29.89	15.55	13.52	13.09	19.02	16.54	16.00	
D2	26.67	23.19	22.19	11.68	10.15	9.72	14.28	12.42	11.88	
D3	15.33	13.33	12.33	6.71	5.84	5.40	8.21	7.14	6.60	
D3-B	13.74	11.94	10.94	6.02	5.23	4.79	7.36	6.39	5.86	
D4	12.46	10.83	9.83	5.46	4.74	4.30	6.67	5.80	5.26	
STUTT GART										
D1	39.71	34.53	33.53	17.39	15.12	14.68	21.26	18.49	17.95	
D2	32.93	28.64	27.64	14.42	12.54	12.10	17.63	15.33	14.80	
D3	19.36	16.83	15.83	8.48	7.37	6.93	10.36	9.01	8.47	
D3-B	17.70	15.39	14.39	7.75	6.74	6.30	9.48	8.24	7.70	
D4	14.44	12.56	11.56	6.32	5.50	5.06	7.73	6.72	6.19	

NATURGASPREISE FUER HAUSHALTE / NATURAL GAS PRICES FOR HOUSEHOLDS / PRIX DU GAZ NATUREL POUR USAGES DOMESTIQUES

JULI 01 JULY 1995 JUILLET		NATIONALE WAEHRUNG NATIONAL CURRENCY / GJ MONNAIE NATIONALE			KKS	PPS	SPA / GJ	ECUS / GJ		
VERBRAUCHER-TYPEN	STEUERN INBEGR.	OHNE MWST.	OHNE STEUERN	STEUERN INBEGR.	OHNE MWST.	OHNE STEUERN	STEUERN INBEGR.	OHNE MWST.	OHNE STEUERN	
STANDARD CONSUMERS	WITH TAXES	EXCL. VAT	EXCL. TAXES	WITH TAXES	EXCL. VAT	EXCL. TAXES	WITH TAXES	EXCL. VAT	EXCL. TAXES	
CONSUMMATEURS TYPE	TAXES COMPRISES	HORS TVA	HORS TAXES	TAXES COMPRISES	HORS TVA	HORS TAXES	TAXES COMPRISES	HORS TVA	HORS TAXES	
DEUTSCHLAND (DM)					MUNCHEN					
D1	30.67	26.67	25.67	13.43	11.68	11.24	16.42	14.28	13.74	
D2	24.09	20.94	19.94	10.55	9.17	8.73	12.90	11.21	10.68	
D3	17.63	15.33	14.33	7.72	6.71	6.27	9.44	8.21	7.67	
D3-B	16.07	13.97	12.97	7.04	6.12	5.68	8.60	7.48	6.94	
D4	14.06	12.22	11.22	6.16	5.35	4.91	7.53	6.54	6.01	
WESER-EMS										
D1	30.83	26.81	25.81	13.50	11.74	11.30	16.51	14.35	13.82	
D2	23.22	20.19	19.19	10.17	8.84	8.40	12.43	10.81	10.27	
D3	14.63	12.72	11.72	6.41	5.57	5.13	7.83	6.81	6.27	
D3-B	13.67	11.89	10.89	5.99	5.21	4.77	7.32	6.37	5.83	
D4	12.04	10.47	9.47	5.27	4.58	4.15	6.45	5.61	5.07	
DRESDEN										
D1	43.38	37.72	36.72	18.99	16.51	16.08	23.22	20.19	19.66	
D2	31.98	27.81	26.81	14.00	12.18	11.74	17.12	14.89	14.35	
D3	18.97	16.50	15.50	8.31	7.22	6.79	10.16	8.83	8.30	
D3-B	17.35	15.08	14.08	7.60	6.60	6.16	9.29	8.07	7.54	
D4	14.44	12.56	11.56	6.32	5.50	5.06	7.73	6.72	6.19	
BERLIN										
D1	41.18	35.81	34.81	18.03	15.68	15.24	22.05	19.17	18.64	
D2	30.70	26.69	25.69	13.44	11.69	11.25	16.44	14.29	13.75	
D3	19.61	17.06	16.06	8.59	7.47	7.03	10.50	9.13	8.60	
D3-B	18.18	15.81	14.81	7.96	6.92	6.48	9.73	8.46	7.93	
D4	15.68	13.64	12.64	6.87	5.97	5.53	8.39	7.30	6.77	
ESPANA (PTA)					MADRID (1)					
D1	2385.5	2056.5	2056.5	18.30	15.77	15.77	14.81	12.77	12.77	
D2	2100.1	1810.5	1810.5	16.11	13.89	13.89	13.04	11.24	11.24	
D3	1651.3	1423.5	1423.5	12.67	10.92	10.92	10.25	8.84	8.84	
D3-B	1607.0	1385.3	1385.3	12.33	10.63	10.63	9.98	8.60	8.60	
D4	1127.6	972.1	972.1	8.65	7.46	7.46	7.00	6.04	6.04	
FRANCE (FF)					PARIS (2)					
D1	95.63	80.64	80.64	13.57	11.44	11.44	14.71	12.41	12.41	
D2	83.30	70.23	70.23	11.82	9.96	9.96	12.82	10.80	10.80	
D3	55.74	47.00	47.00	7.91	6.67	6.67	8.58	7.23	7.23	
D3-B	52.37	44.15	44.15	7.43	6.26	6.26	8.06	6.79	6.79	
D4	45.69	38.52	38.52	6.48	5.47	5.47	7.03	5.93	5.93	
STRASBOURG										
D1	127.53	107.53	107.53	18.09	15.26	15.26	19.62	16.54	16.54	
D2	104.83	88.39	88.39	14.87	12.54	12.54	16.13	13.60	13.60	
D3	61.11	51.53	51.53	8.67	7.31	7.31	9.40	7.93	7.93	
D3-B	58.98	49.73	49.73	8.37	7.06	7.06	9.07	7.65	7.65	
D4	51.81	43.69	43.69	7.35	6.20	6.20	7.97	6.72	6.72	

(1) PREISE AUCH GUELTIG FUER / PRICES ALSO VALID FOR / PRIX EGALEMENT VALABLES POUR : BARCELONA, VALENCIA UND FUER ORTSGAS / AND FOR GASHORKS GAS / ET POUR GAZ D'USINE : MADRID, VALENCIA  
 (2) PREISE ZONE 1, UNTER ANDEREM AUCH GUELTIG FUER / PRICES ZONE 1, ALSO VALID FOR/ PRIX TARIFS ZONE 1, EGALEMENT VALABLES POUR, ENTRE AUTRES : LILLE, LYON, TOULOUSE, MARSEILLE

NATURGASPREISE FUER HAUSHALTE / NATURAL GAS PRICES FOR HOUSEHOLDS / PRIX DU GAZ NATUREL POUR USAGES DOMESTIQUES

JULI 01 JULY 1995 JUILLET	NATIONALE WAEHRUNG NATIONAL CURRENCY / GJ MONNAIE NATIONALE			KKS	PPS	SPA / GJ	ECUS / GJ			
	STEUERN INBEGR. WITH TAXES COMPRISES	OHNE MWST. VAT EXCL. TVA	OHNE STEUERN TAXES EXCL. TAXES				STEUERN INBEGR. WITH TAXES COMPRISES	OHNE MWST. VAT EXCL. TVA	OHNE STEUERN TAXES EXCL. TAXES	
VERBRAUCHER-TYPEN STANDARD CONSUMERS CONSOHMATEURS TYPE										
IRELAND (IRL)										
DUBLIN										
D1	15.72	13.97	13.97	22.02	19.57	19.57	19.18	17.04	17.04	
D2	13.41	11.92	11.92	18.78	16.70	16.70	16.36	14.54	14.54	
D3	6.40	5.69	5.69	8.96	7.97	7.97	7.81	6.94	6.94	
D3-B	6.40	5.69	5.69	8.96	7.97	7.97	7.81	6.94	6.94	
D4	6.40	5.69	5.69	8.96	7.97	7.97	7.81	6.94	6.94	
ITALIA (LIT)										
MILANO										
D1	23271	21156	18667	13.73	12.48	11.01	10.70	9.73	8.59	
D2	20948	19044	16549	12.36	11.24	9.76	9.64	8.76	7.61	
D3	28515	23962	15624	16.82	14.14	9.22	13.12	11.02	7.19	
D3-B	28447	23905	15386	16.78	14.10	9.08	13.09	11.00	7.08	
D4	28238	23729	14847	16.66	14.00	8.76	12.99	10.92	6.83	
TORINO										
D1	24248	22044	18693	14.31	13.01	11.03	11.15	10.14	8.60	
D2	21882	19893	16543	12.91	11.74	9.76	10.07	9.15	7.61	
D3	26885	22593	13212	15.86	13.33	7.80	12.37	10.39	6.08	
D3-B	26815	22534	12972	15.82	13.30	7.65	12.33	10.37	5.97	
D4	27317	22956	13034	16.12	13.54	7.69	12.57	10.56	6.00	
GENOVA										
D1	24248	22043	18693	14.31	13.01	11.03	11.15	10.14	8.60	
D2	21882	19893	16542	12.91	11.74	9.76	10.07	9.15	7.61	
D3	28781	24186	14805	16.98	14.27	8.73	13.24	11.13	6.81	
D3-B	28601	24035	14114	16.87	14.18	8.33	13.16	11.06	6.49	
D4	28601	24035	14114	16.87	14.18	8.33	13.16	11.06	6.49	
ROMA										
D1	25562	23238	19888	15.08	13.71	11.73	11.76	10.69	9.15	
D2	23197	21088	17737	13.69	12.44	10.46	10.67	9.70	8.16	
D3	30022	25228	15847	17.71	14.88	9.35	13.81	11.60	7.29	
D3-B	29951	25169	15608	17.67	14.85	9.21	13.78	11.58	7.18	
D4	32873	27625	17703	19.40	16.30	10.44	15.12	12.71	8.14	
NAPOLI										
D1	27677	25161	22278	16.33	14.84	13.14	12.73	11.57	10.25	
D2	25311	23010	20127	14.93	13.58	11.87	11.64	10.58	9.26	
D3	30179	27435	20483	17.81	16.19	12.08	13.88	12.62	9.42	
D3-B	30107	27370	20243	17.76	16.15	11.94	13.85	12.59	9.31	
D4	29008	26371	18890	17.11	15.56	11.15	13.34	12.13	8.69	
LUXEMBOURG (LFR)										
LUXEMBOURG-VILLE										
D1	494.67	466.67	466.67	11.47	10.82	10.82	12.88	12.15	12.15	
D2	422.48	398.57	398.57	9.80	9.24	9.24	11.00	10.37	10.37	
D3	215.04	202.87	202.87	4.99	4.70	4.70	5.60	5.28	5.28	
D3-B	210.14	198.25	198.25	4.87	4.60	4.60	5.47	5.16	5.16	
D4	201.31	189.91	189.91	4.67	4.40	4.40	5.24	4.94	4.94	

JULI 01 JULY 1995 JUILLET		NATIONALE WAEPUNG NATIONAL CURRENCY / GJ MONNAIE NATIONALE			KKS	PPS	SPA / GJ	ECUS / GJ		
		STEUERN	OHNE	OHNE	STEUERN	OHNE	OHNE	STEUERN	OHNE	OHNE
VERBRAUCHER-TYPEN		INBEGR.	MWST.	STEUERN	INBEGR.	MWST.	STEUERN	INBEGR.	MWST.	STEUERN
STANDARD CONSUMERS		WITH	VAT	TAXES	WITH	VAT	TAXES	WITH	VAT	TAXES
CONSOUMMATEURS TYPE		TAXES	EXCL.	EXCL.	TAXES	EXCL.	EXCL.	TAXES	EXCL.	EXCL.
		COMPRISES	HORS	HORS	COMPRISES	HORS	HORS	COMPRISES	HORS	HORS
		TVA	TAXES	TAXES	TVA	TAXES	TAXES	TVA	TAXES	TAXES
NEDERLAND (HFL)					ROTTERDAM					
D1		27.78	23.64	23.03	12.11	10.31	10.04	13.28	11.30	11.01
D2		20.83	17.73	17.12	9.08	7.73	7.47	9.95	8.47	8.18
D3		15.27	13.00	12.39	6.66	5.67	5.40	7.30	6.21	5.92
D3-B		14.81	12.60	11.99	6.46	5.49	5.23	7.08	6.02	5.73
D4		13.99	11.91	11.30	6.10	5.19	4.93	6.69	5.69	5.40
OESTERREICH										
D1										
D2										
D3										
D3-B										
D4										
SUOMI/FINLAND (FMK)					NATIONAL					
D1		.	.	.	.	.	.	.	.	.
D2		.	.	.	.	.	.	.	.	.
D3		39.83	32.65	31.24	5.99	4.91	4.70	6.98	5.72	5.47
D3-B		.	.	.	.	.	.	.	.	.
D4		.	.	.	.	.	.	.	.	.
SVERIGE										
D1										
D2										
D3										
D3-B										
D4										
UNITED KINGDOM (UKL) (1)					LONDON (2)					
D1		8.41	7.78	7.78	12.17	11.26	11.26	9.97	9.23	9.23
D2		6.68	6.18	6.18	9.67	8.95	8.95	7.92	7.33	7.33
D3		4.77	4.42	4.42	6.90	6.40	6.40	5.66	5.24	5.24
D3-B		4.62	4.27	4.27	6.69	6.18	6.18	5.48	5.06	5.06
D2-B		5.49	5.08	5.08	7.95	7.35	7.35	6.51	6.02	6.02
NORGE (3)										
D1										
D2										
D3										
D3-B										
D4										

(1) EXTRA STANDARD ABNEHMER "D2-B" NUR FUER VEREINIGTES KOENIGREICH

EXTRA STANDARD CONSUMER "D2-B" FOR UNITED KINGDOM ONLY

CONSOUMMATEUR TYPE SUPPLEMENTAIRE "D2-B", N'EXISTE QU'AU ROYAUME-UNI

(2) PREISE AUCH GUELTIG FUER / PRICES ALSO VALID FOR / PRIX EGALEMENT VALABLES POUR : LEEDS, BIRMINGHAM

(3) IM RAHMEN DER ABKOMMEN MIT DEN MITGLIEDSTAATEN DES EUROPAEISCHEN WIRTSCHAFTSRAUMS (EWR) SIND DIE GASPRISE FUER NORWEGEN AUCH VEROEFFENTLICHT / IN THE FRAMEWORK OF THE AGREEMENTS CONCLUDED BETWEEN THE MEMBER COUNTRIES OF THE EUROPEAN ECONOMIC AGREEMENT (EEA), PRICES FOR NORWAY ARE ALSO PUBLISHED / DANS LE CADRE DES ACCORDS PASSES ENTRE LES PAYS MEMBRES DE L'ESPACE ECONOMIQUE EUROPEEN (EEE), LES PRIX DE LA NORVEGE SONT EGALEMENT PUBLIES

NATURGASPREISE FUER HAUSHALTE / NATURAL GAS PRICES FOR HOUSEHOLDS / PRIX DU GAZ NATUREL POUR USAGES DOMESTIQUES

JULI 01 JULY 1995 JUILLET		NATIONALE WAEHRUNG NATIONAL CURRENCY / GJ MONNAIE NATIONALE			KKS	PPS	SPA / GJ	ECUS / GJ		
VERBRAUCHER-TYPEN	STEUERN INBEGR.	OHNE MWST.	OHNE STEUERN	STEUERN INBEGR.	OHNE MWST.	OHNE STEUERN	STEUERN INBEGR.	OHNE MWST.	OHNE STEUERN	
STANDARD CONSUMERS	WITH TAXES	VAT EXCL.	TAXES EXCL.	WITH TAXES	VAT EXCL.	TAXES EXCL.	WITH TAXES	VAT EXCL.	TAXES EXCL.	
CONSOHMATEURS TYPE	TAXES COMPRISES	HORS TVA	HORS TAXES	TAXES COMPRISES	HORS TVA	HORS TAXES	TAXES COMPRISES	HORS TVA	HORS TAXES	
IRELAND (IRL)										
DUBLIN										
D1	15.72	13.97	13.97	22.02	19.57	19.57	19.18	17.04	17.04	
D2	13.41	11.92	11.92	18.78	16.70	16.70	16.36	14.54	14.54	
D3	6.40	5.69	5.69	8.96	7.97	7.97	7.81	6.94	6.94	
D3-B	6.40	5.69	5.69	8.96	7.97	7.97	7.81	6.94	6.94	
D4	6.40	5.69	5.69	8.96	7.97	7.97	7.81	6.94	6.94	
ITALIA (LIT)										
MILANO										
D1	23271	21156	18667	13.73	12.48	11.01	10.70	9.73	8.59	
D2	20948	19044	16549	12.36	11.24	9.76	9.64	8.76	7.61	
D3	28515	23962	15624	16.82	14.14	9.22	13.12	11.02	7.19	
D3-B	28447	23905	15386	16.78	14.10	9.08	13.09	11.00	7.08	
D4	28238	23729	14847	16.66	14.00	8.76	12.99	10.92	6.83	
TORINO										
D1	24248	22044	18693	14.31	13.01	11.03	11.15	10.14	8.60	
D2	21882	19893	16543	12.91	11.74	9.76	10.07	9.15	7.61	
D3	26885	22593	13212	15.86	13.33	7.80	12.37	10.39	6.08	
D3-B	26815	22534	12972	15.82	13.30	7.65	12.33	10.37	5.97	
D4	27317	22956	13034	16.12	13.54	7.69	12.57	10.56	6.00	
GENOVA										
D1	24248	22043	18693	14.31	13.01	11.03	11.15	10.14	8.60	
D2	21882	19893	16542	12.91	11.74	9.76	10.07	9.15	7.61	
D3	28781	24186	14805	16.98	14.27	8.73	13.24	11.13	6.81	
D3-B	28601	24035	14114	16.87	14.18	8.33	13.16	11.06	6.49	
D4	28601	24035	14114	16.87	14.18	8.33	13.16	11.06	6.49	
ROMA										
D1	25562	23238	19888	15.08	13.71	11.73	11.76	10.69	9.15	
D2	23197	21088	17737	13.69	12.44	10.46	10.67	9.70	8.16	
D3	30022	25228	15847	17.71	14.88	9.35	13.81	11.60	7.29	
D3-B	29951	25169	15608	17.67	14.85	9.21	13.78	11.58	7.18	
D4	32873	27625	17703	19.40	16.30	10.44	15.12	12.71	8.14	
NAPOLI										
D1	27677	25161	22278	16.33	14.84	13.14	12.73	11.57	10.25	
D2	25311	23010	20127	14.93	13.58	11.87	11.64	10.58	9.26	
D3	30179	27435	20483	17.81	16.19	12.08	13.88	12.62	9.42	
D3-B	30107	27370	20243	17.76	16.15	11.94	13.85	12.59	9.31	
D4	29008	26371	18890	17.11	15.56	11.15	13.34	12.13	8.69	
LUXEMBOURG (LFR)										
LUXEMBOURG-VILLE										
D1	494.67	466.67	466.67	11.47	10.82	10.82	12.88	12.15	12.15	
D2	422.48	398.57	398.57	9.90	9.24	9.24	11.00	10.37	10.37	
D3	215.04	202.87	202.87	4.99	4.70	4.70	5.60	5.28	5.28	
D3-B	210.14	198.25	198.25	4.87	4.60	4.60	5.47	5.16	5.16	
D4	201.31	189.91	189.91	4.67	4.40	4.40	5.24	4.94	4.94	

NATURGASPREISE FUER HAUSHALTE / NATURAL GAS PRICES FOR HOUSEHOLDS / PRIX DU GAZ NATUREL POUR USAGES DOMESTIQUES

JULI 01 JULY 1995 JUILLET		NATIONALE WAERHUNG NATIONAL CURRENCY / GJ MONNAIE NATIONALE			KKS	PPS	SPA / GJ	ECUS / GJ			
		STEUERN INBEGR. WITH TAXES COMPRISES	OHNE MWST. VAT EXCL. HORS TVA	OHNE STEUERN TAXES EXCL. TAXES	STEUERN INBEGR. WITH TAXES COMPRISES	OHNE MWST. VAT EXCL. HORS TVA	OHNE STEUERN TAXES EXCL. TAXES	STEUERN INBEGR. WITH TAXES COMPRISES	OHNE MWST. VAT EXCL. HORS TVA	OHNE STEUERN TAXES EXCL. HORS TAXES	
		NEDERLAND (HFL)					ROTTERDAM				
D1		27.78	23.64	23.03	12.11	10.31	10.04	13.28	11.30	11.01	
D2		20.83	17.73	17.12	9.08	7.73	7.47	9.95	8.47	8.18	
D3		15.27	13.00	12.39	6.66	5.67	5.40	7.30	6.21	5.92	
D3-B		14.81	12.60	11.99	6.46	5.49	5.23	7.08	6.02	5.73	
D4		13.99	11.91	11.30	6.10	5.19	4.93	6.69	5.69	5.40	
		OESTERREICH									
D1											
D2											
D3											
D3-B											
D4											
		SUOMI/FINLAND (FMK)					NATIONAL				
D1		.	.	.	.	.	.	.	.	.	
D2		.	.	.	.	.	.	.	.	.	
D3		39.83	32.65	31.24	5.99	4.91	4.70	6.98	5.72	5.47	
D3-B		.	.	.	.	.	.	.	.	.	
D4		.	.	.	.	.	.	.	.	.	
		SVERIGE									
D1											
D2											
D3											
D3-B											
D4											
		UNITED KINGDOM (UKL) (1)					LONDON (2)				
D1		8.41	7.78	7.78	12.17	11.26	11.26	9.97	9.23	9.23	
D2		6.68	6.18	6.18	9.67	8.95	8.95	7.92	7.33	7.33	
D3		4.77	4.42	4.42	6.90	6.40	6.40	5.66	5.24	5.24	
D3-B		4.62	4.27	4.27	6.69	6.18	6.18	5.48	5.06	5.06	
D2-B		5.49	5.08	5.08	7.95	7.35	7.35	6.51	6.02	6.02	
		NORGE (3)									
D1											
D2											
D3											
D3-B											
D4											


(1) EXTRA STANDARD ABNEHMER "D2-B" NUR FUER VEREINIGTES KOENIGREICH  
EXTRA STANDARD CONSUMER "D2-B" FOR UNITED KINGDOM ONLY  
CONSOMMATEUR TYPE SUPPLEMENTAIRE "D2-B", N'EXISTE QU'AU ROYAUME-UNI

(2) PREISE AUCH GUELTIG FUER / PRICES ALSO VALID FOR / PRIX EGALEMENT VALABLES POUR : LEEDS, BIRMINGHAM

(3) IM RAHMEN DER ABKOMMEN MIT DEN MITGLIEDSTAATEN DES EUROPAEISCHEN WIRTSCHAFTSRAUMS (EWR) SIND DIE GASPRISE  
FUER NORWEGEN AUCH VEROEFFENTLICHT / IN THE FRAMEWORK OF THE AGREEMENTS CONCLUDED BETWEEN THE MEMBER  
COUNTRIES OF THE EUROPEAN ECONOMIC AGREEMENT (EEA), PRICES FOR NORWAY ARE ALSO PUBLISHED / DANS LE CADRE  
DES ACCORDS PASSES ENTRE LES PAYS MEMBRES DE L'ESPACE ECONOMIQUE EUROPEEN (EEE), LES PRIX DE LA NORVEGE  
SONT EGALEMENT PUBLIES


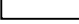


## ORTSGASPREISE FUER HAUSHALTE / GASWORKS GAS PRICES FOR HOUSEHOLDS / PRIX DU GAZ D'USINE POUR USAGES DOMESTIQUES

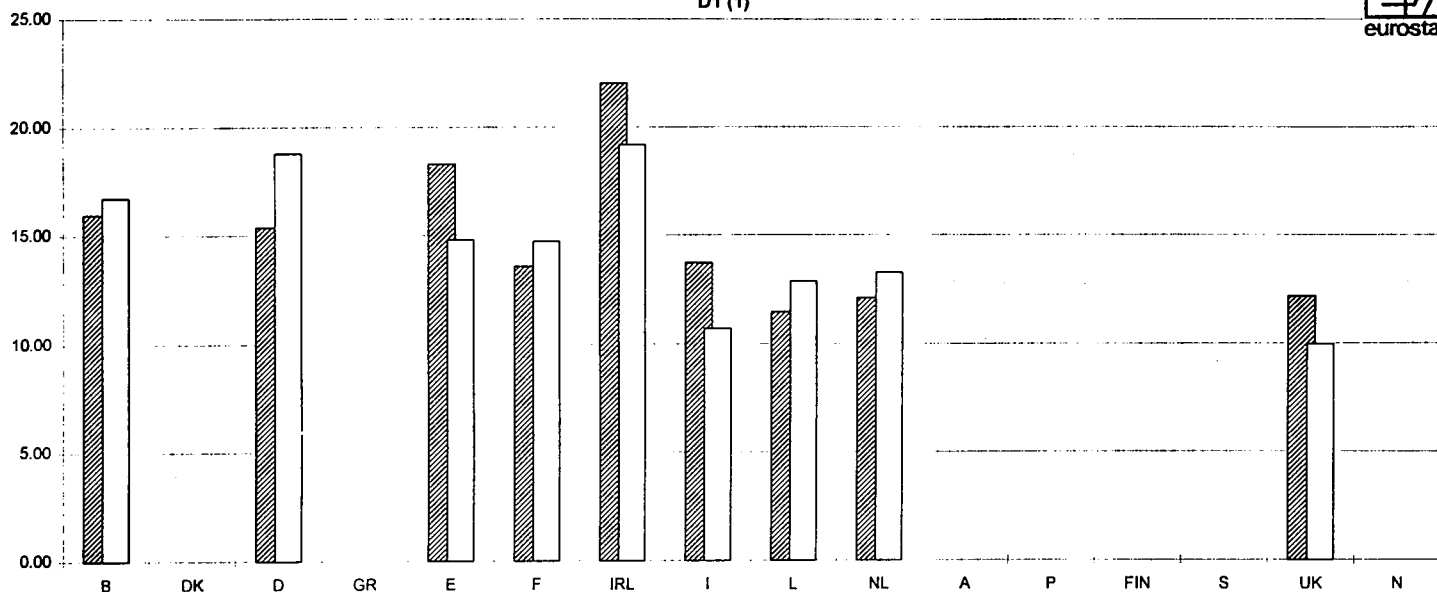
JULI 01 JULY 1995 JUILLET	NATIONALE WAEHRUNG			KKS	PPS	SPA / GJ	ECUS / GJ			
	NATIONAL CURRENCY / GJ									
	MONNAIE NATIONALE									
VERBRAUCHER-TYPEN	STEUERN	OHNE	OHNE	STEUERN	OHNE	OHNE	STEUERN	OHNE	OHNE	
STANDARD CONSUMERS	INBEGR.	MWST.	STEUERN	INBEGR.	MWST.	STEUERN	INBEGR.	MWST.	STEUERN	
CONSOMMATEURS TYPE	WITH	VAT	TAXES	WITH	VAT	TAXES	WITH	VAT	TAXES	
	TAXES	EXCL.	EXCL.	TAXES	EXCL.	EXCL.	TAXES	EXCL.	EXCL.	
	TAXES	HORS	HORS	TAXES	HORS	HORS	TAXES	HORS	HORS	
	COMPRISES	TVA	TAXES	COMPRISES	TVA	TAXES	COMPRISES	TVA	TAXES	
DANMARK (DKR)				KOBENHAVN						
D1	210.10	168.08	168.08	22.29	17.83	17.83	28.88	23.10	23.10	
D2	198.18	158.54	158.54	21.02	16.82	16.82	27.24	21.79	21.79	
D3	148.08	118.46	118.46	15.71	12.57	12.57	20.35	16.28	16.28	
D3-B	138.73	110.98	110.98	14.72	11.77	11.77	19.07	15.25	15.25	
D4	113.28	90.62	90.62	12.02	9.61	9.61	15.57	12.45	12.45	
PORTUGAL (ESC)				LISBOA						
D1	2909.00	2770.00	2770.00	21.82	20.78	20.78	14.81	14.10	14.10	
D2	2909.00	2770.00	2770.00	21.82	20.78	20.78	14.81	14.10	14.10	
D3	2909.00	2770.00	2770.00	21.82	20.78	20.78	14.81	14.10	14.10	
D3-B	2909.00	2770.00	2770.00	21.82	20.78	20.78	14.81	14.10	14.10	
D4										

**GASPREISE FUER HAUSHALTE**  
**GAS PRICES FOR HOUSEHOLDS**  
**PRIX DU GAZ POUR USAGES DOMESTIQUES**

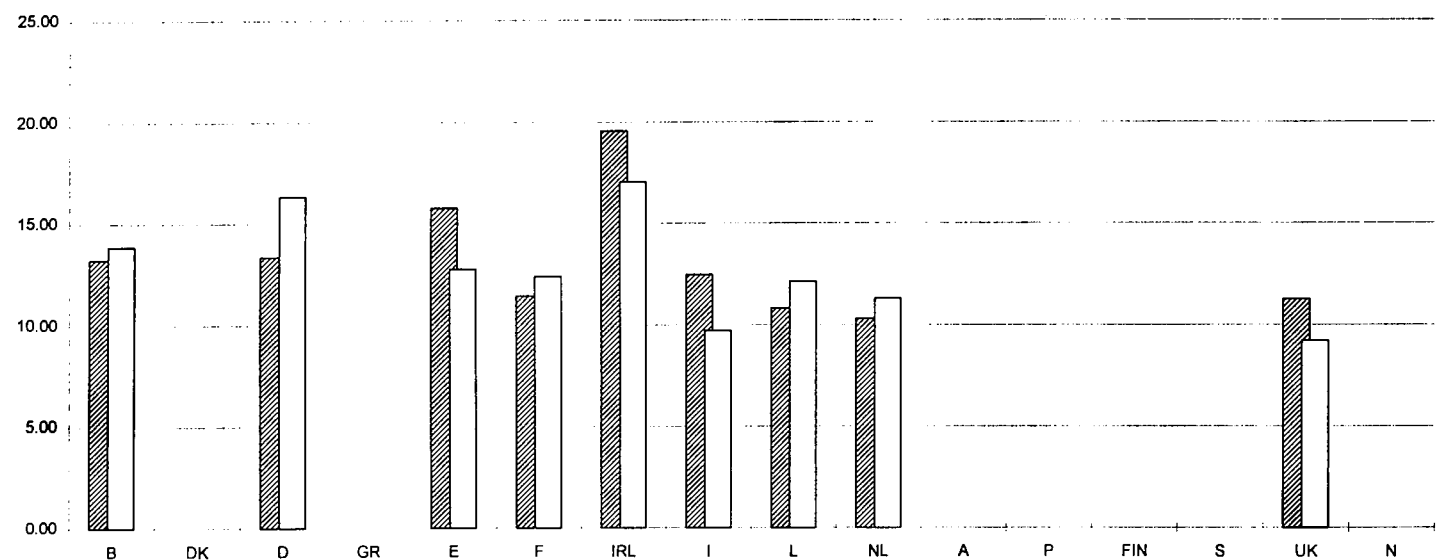
1995-2

B	BRUXELLES	IRL	DUBLIN	FIN	FINLAND NATIONAL		KKS-PPS-SPA / GJ	(1)	STEUERN INBEGR./ TAXES INCL./ TAXES COMPRISES
DK	-	I	MILANO	S	SVERIGE		ECU / GJ	(2)	OHNE MWST./ VAT EXCL./ HORS TVA
D	NATIONAL	L	LUXEMBOURG	UK	LONDON			(3)	OHNE STEUERN/ TAXES EXCL./ HORS TAXES
GR	-	NL	ROTTERDAM	N	NORGE				
E	MADRID	A	ÖSTERREICH						
F	PARIS	P	-						

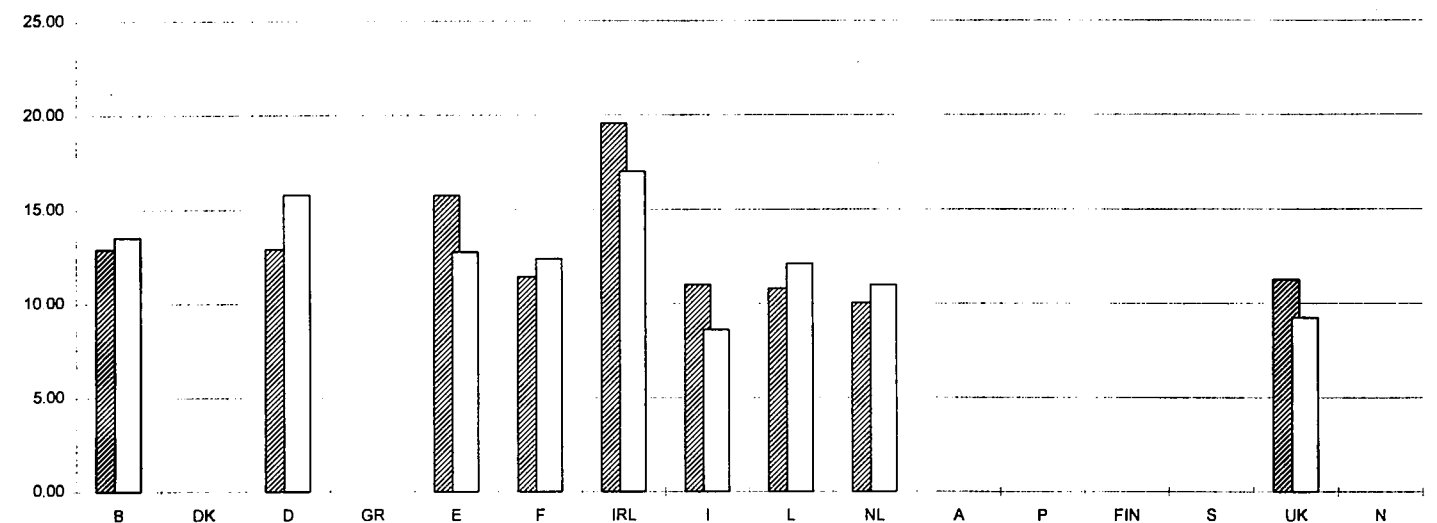
D1 (1)




D1 (2)



D1 (3)





ORTSGASPREISE FUER HAUSHALTE / GASWORKS GAS PRICES FOR HOUSEHOLDS / PRIX DU GAZ D'USINE POUR USAGES DOMESTIQUES

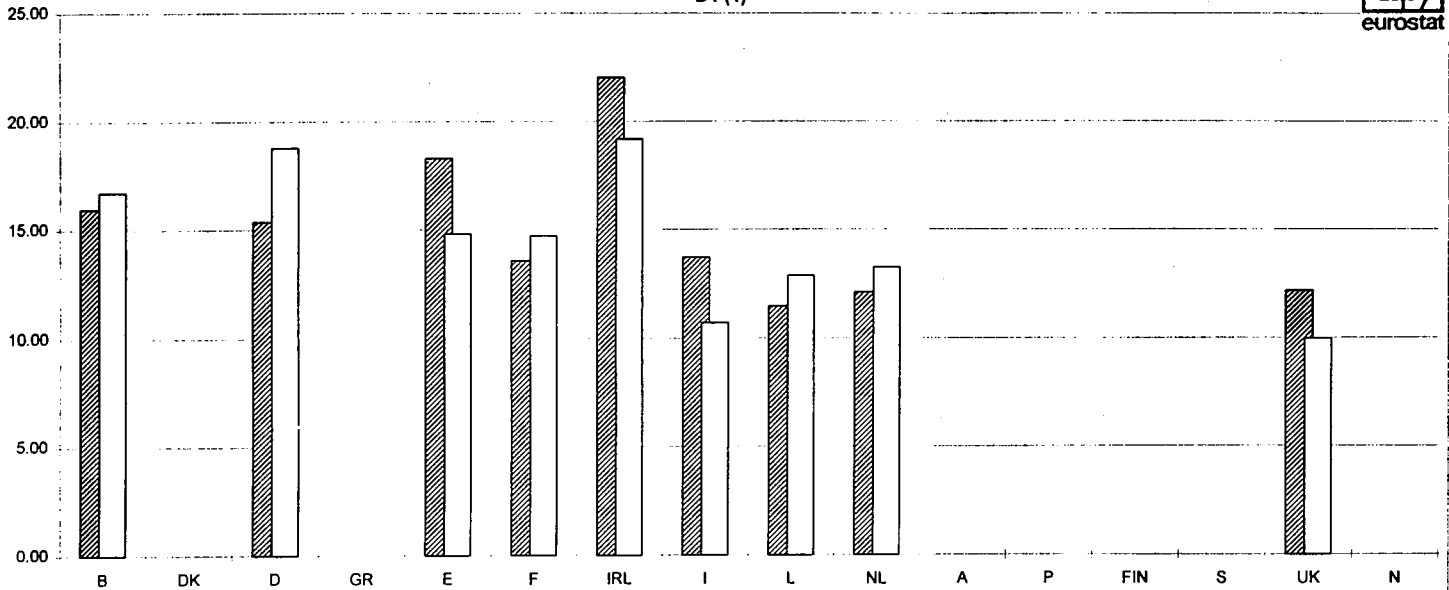
JULI 01 JULY 1995 JUILLET	NATIONALE WAEHRUNG NATIONAL CURRENCY / GJ MONNAIE NATIONALE			KKS	PPS	SPA / GJ	ECUS / GJ			
	VERBRAUCHER-TYPEN STANDARD CONSUMERS CONSOMMATEURS TYPE	STEUERN INBEGR. WITH TAXES COMPRISES	OHNE MWST. VAT EXCL. HORS TVA				OHNE STEUERN TAXES EXCL. HORS TAXES	STEUERN INBEGR. WITH TAXES COMPRISES	OHNE MWST. VAT EXCL. HORS TVA	
	DANMARK (DKR)			KOBENHAVN						
D1	210.10	168.08	168.08	22.29	17.83	17.83	28.88	23.10	23.10	
D2	198.18	158.54	158.54	21.02	16.82	16.82	27.24	21.79	21.79	
D3	148.08	118.46	118.46	15.71	12.57	12.57	20.35	16.28	16.28	
D3-B	138.73	110.98	110.98	14.72	11.77	11.77	19.07	15.25	15.25	
D4	113.28	90.62	90.62	12.02	9.61	9.61	15.57	12.45	12.45	
	PORTUGAL (ESC)			LISBOA						
D1	2909.00	2770.00	2770.00	21.82	20.78	20.78	14.81	14.10	14.10	
D2	2909.00	2770.00	2770.00	21.82	20.78	20.78	14.81	14.10	14.10	
D3	2909.00	2770.00	2770.00	21.82	20.78	20.78	14.81	14.10	14.10	
D3-B	2909.00	2770.00	2770.00	21.82	20.78	20.78	14.81	14.10	14.10	
D4										

GASPREISE FUER HAUSHALTE  
 GAS PRICES FOR HOUSEHOLDS  
 PRIX DU GAZ POUR USAGES DOMESTIQUES

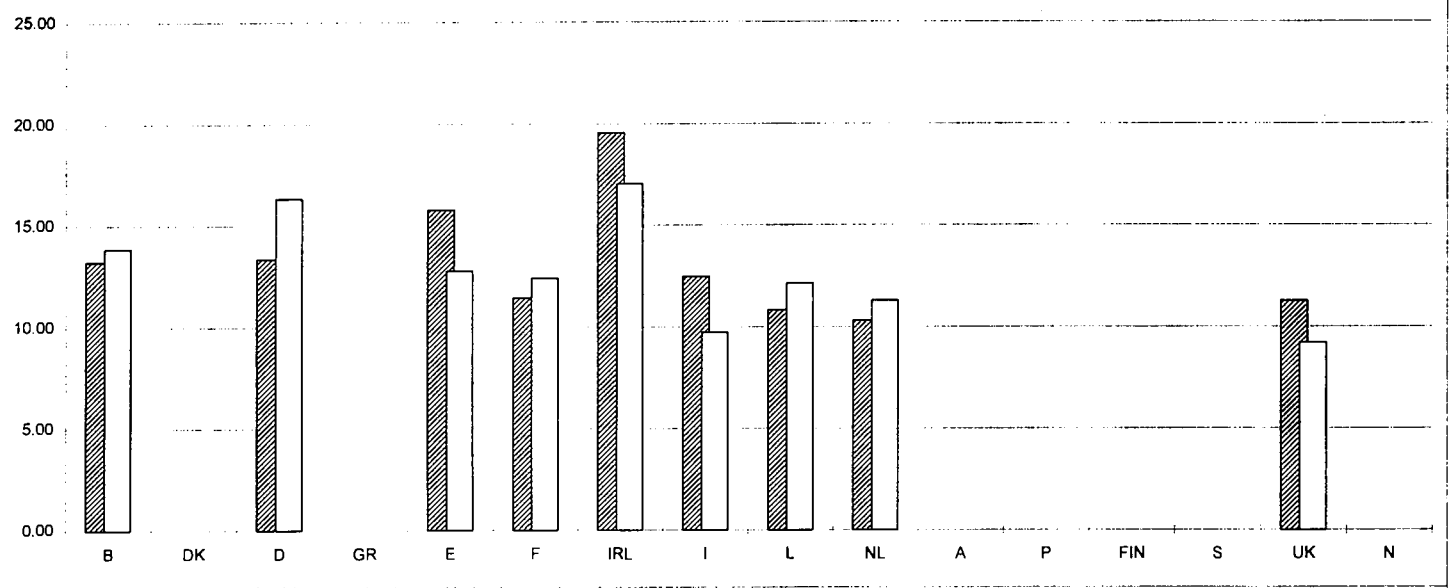
1995-2

B	BRUXELLES	IRL	DUBLIN	FIN	FINLAND NATIONAL		KKS-PPS-SPA / GJ	(1)	STEUERN INBEGR / TAXES INCL / TAXES COMPRISES
DK	-	I	MILANO	S	SVERIGE			(2)	OHNE MWST / VAT EXCL / HORS TVA
D	NATIONAL	L	LUXEMBOURG	UK	LONDON			(3)	OHNE STEUERN / TAXES EXCL / HORS TAXES
GR	-	NL	ROTTERDAM	N	NORGE		ECU / GJ		
E	MADRID	A	ÖSTERREICH						
F	PARIS	P	-						

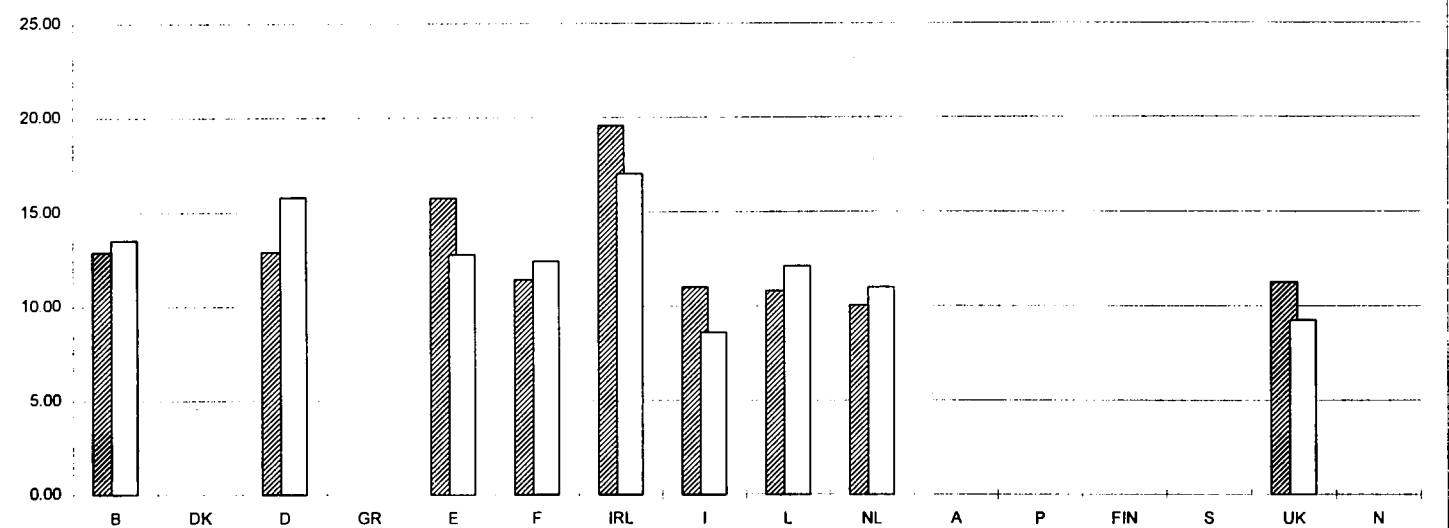
D1 (1)



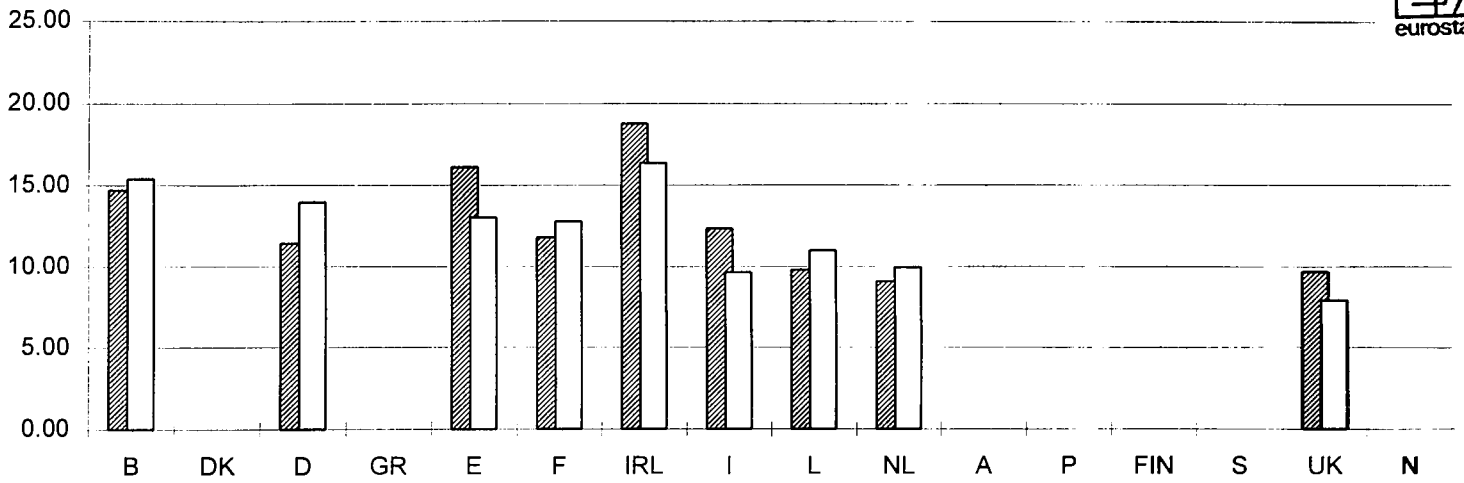
D1 (2)



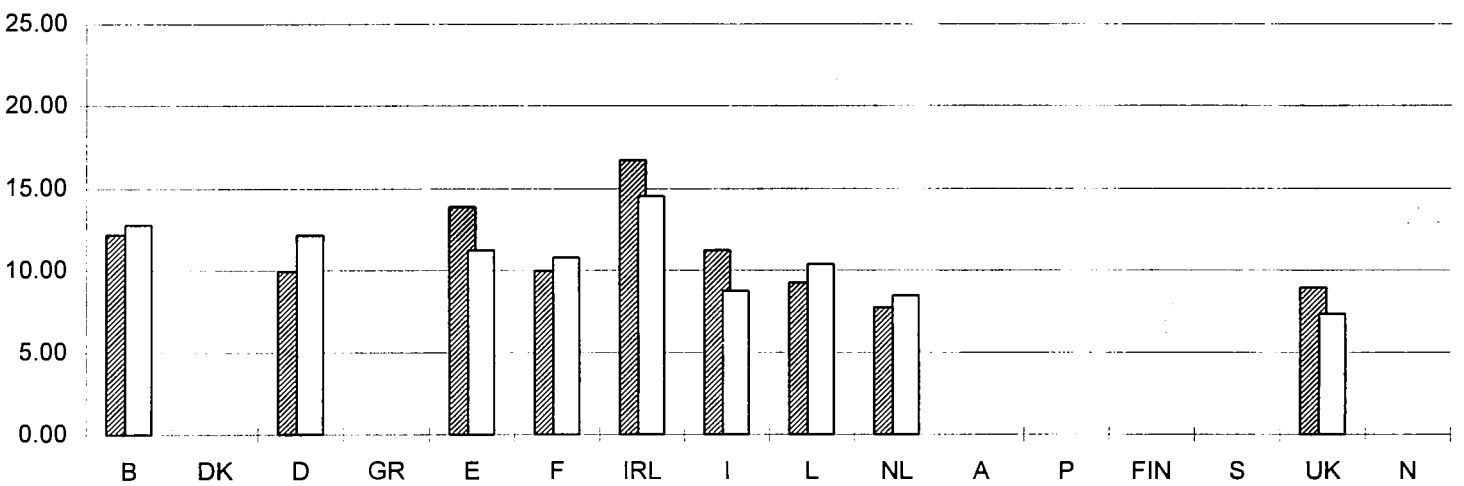
D1 (3)



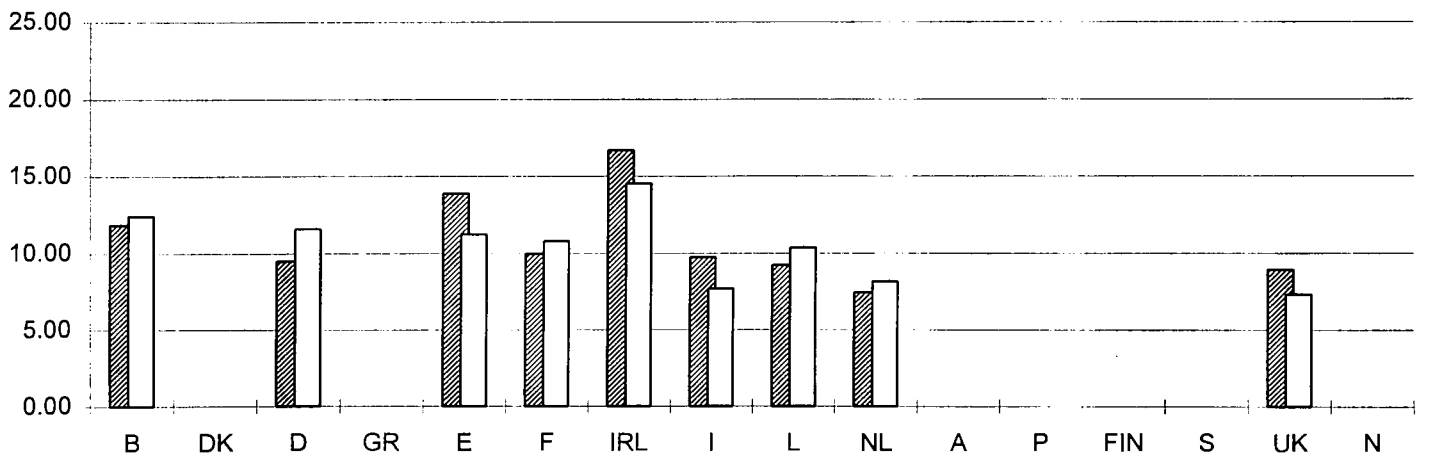
D2 (1)



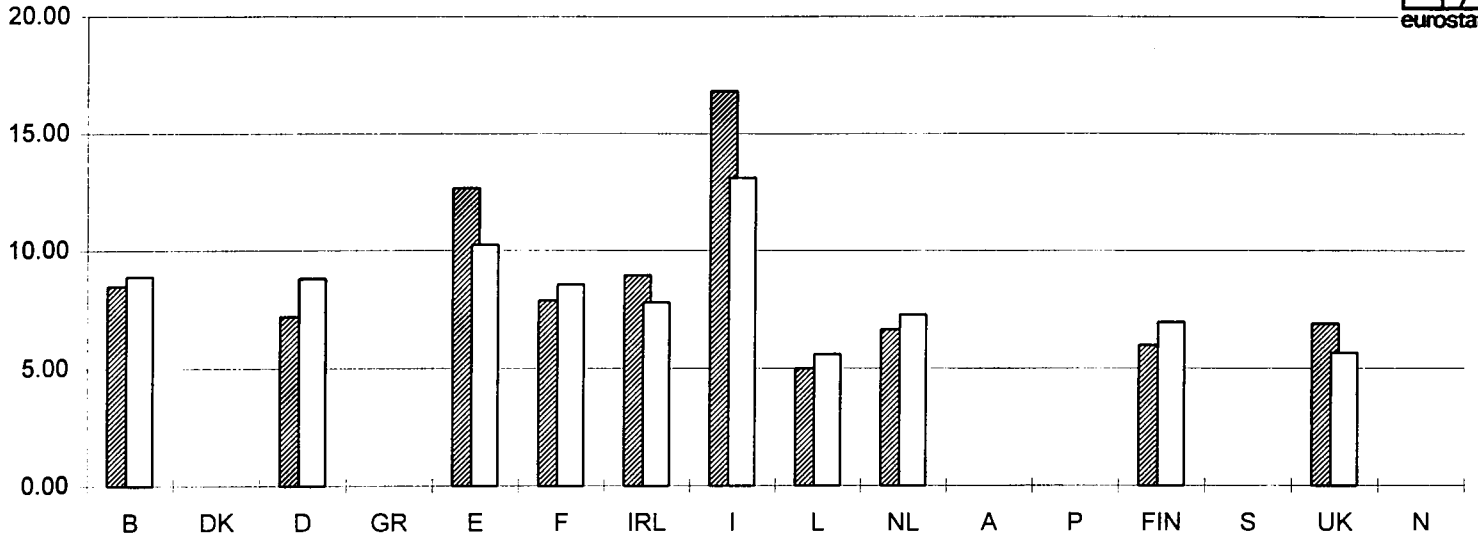
D2 (2)



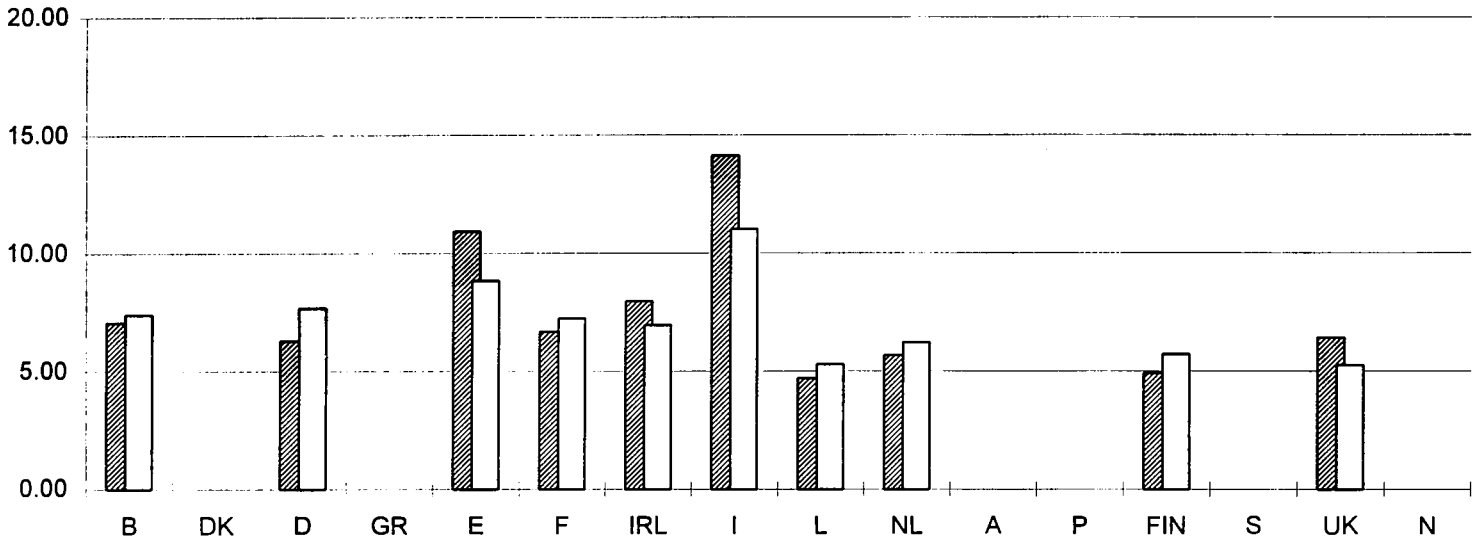
D2 (3)



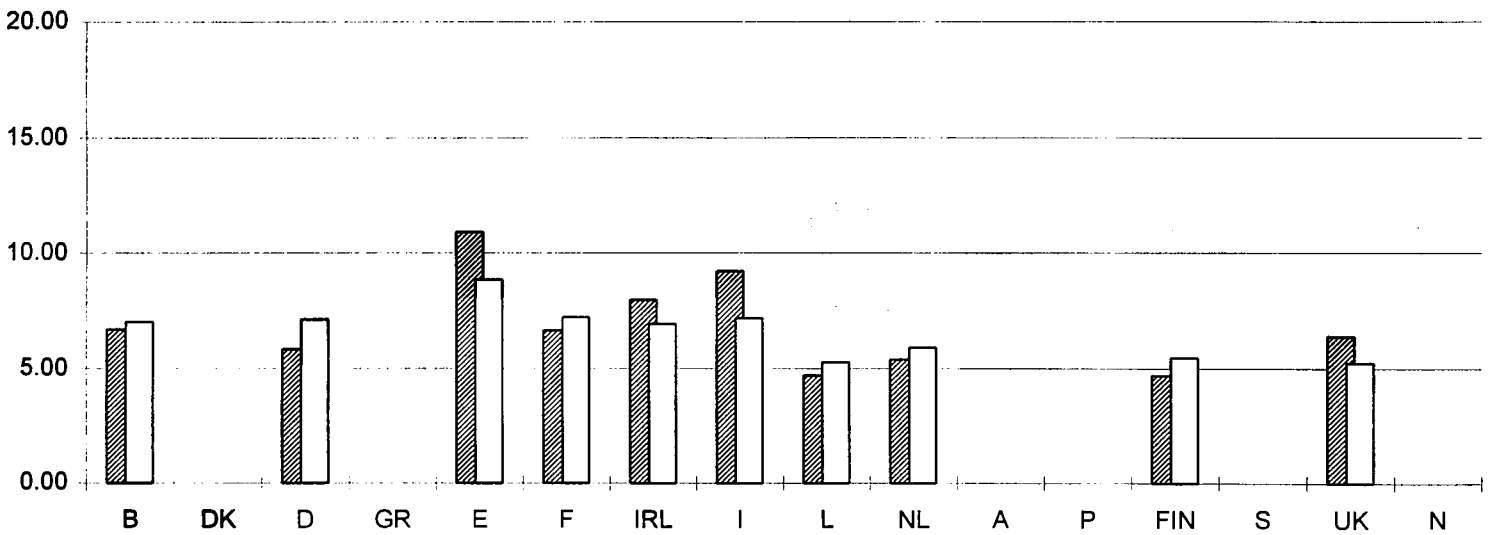
D3 (1)



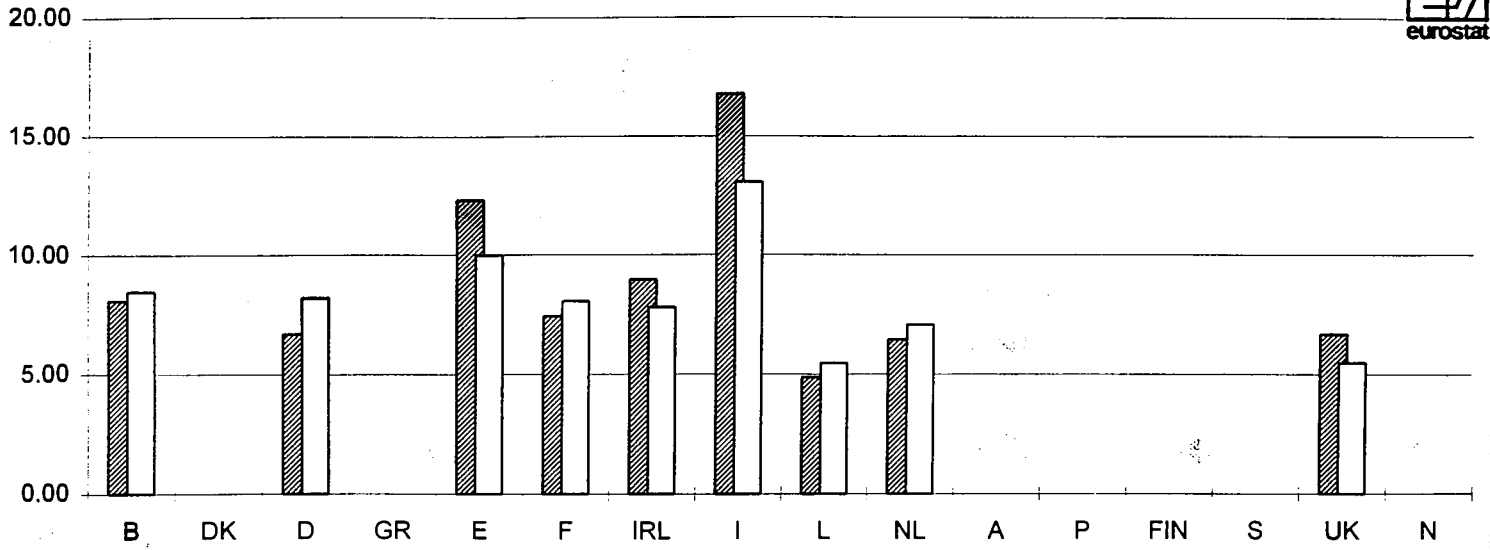
D3 (2)



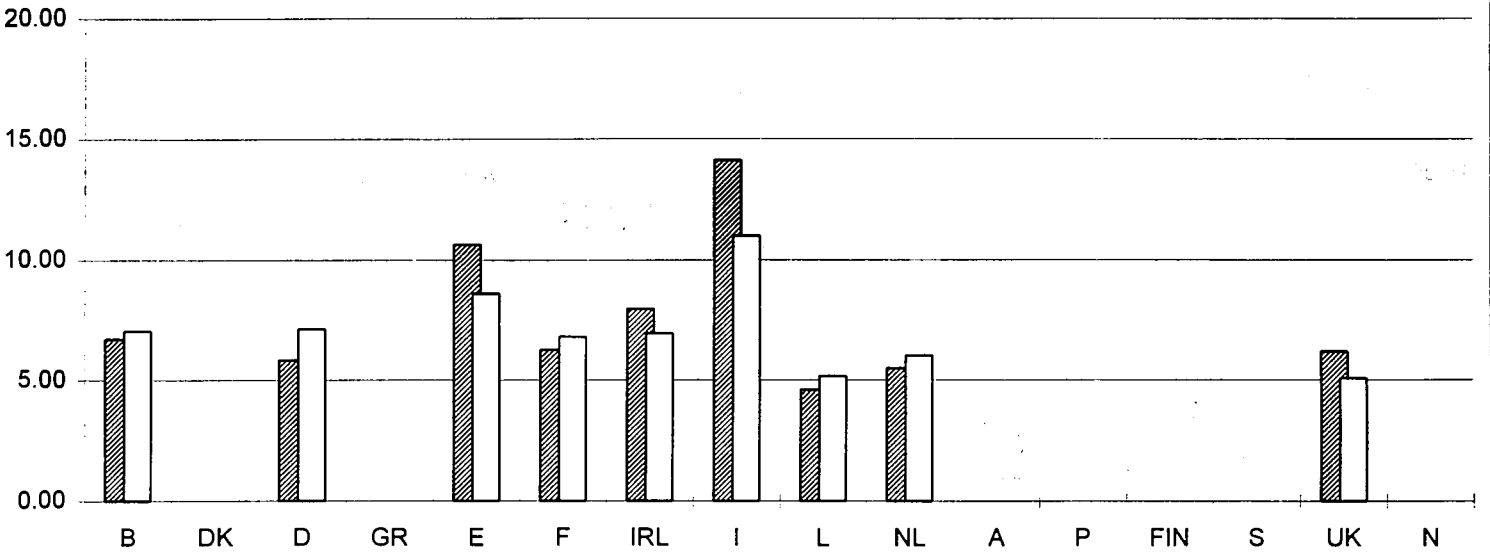
D3 (3)



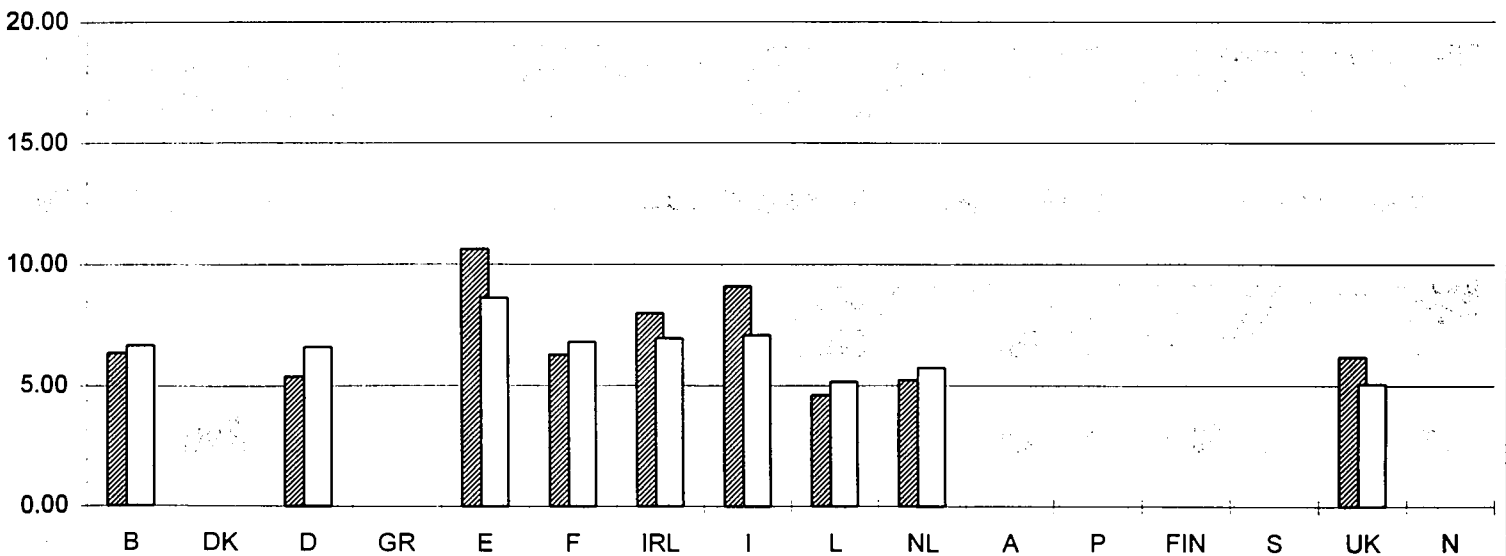
D3-B (1)



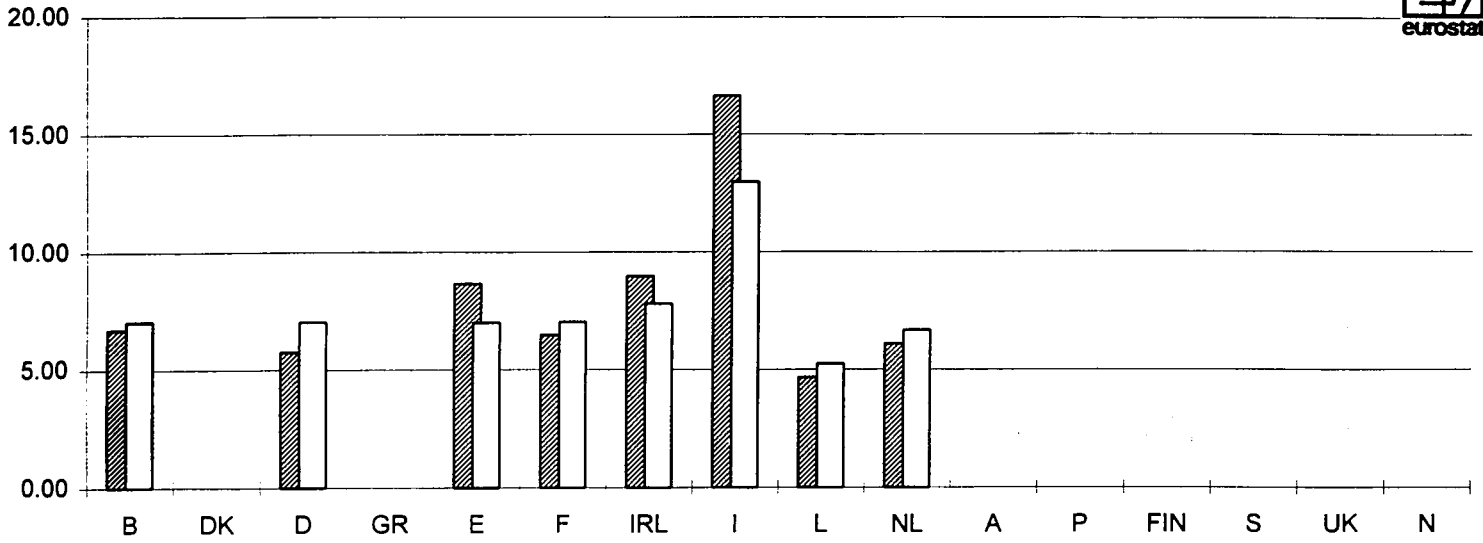
D3-B (2)



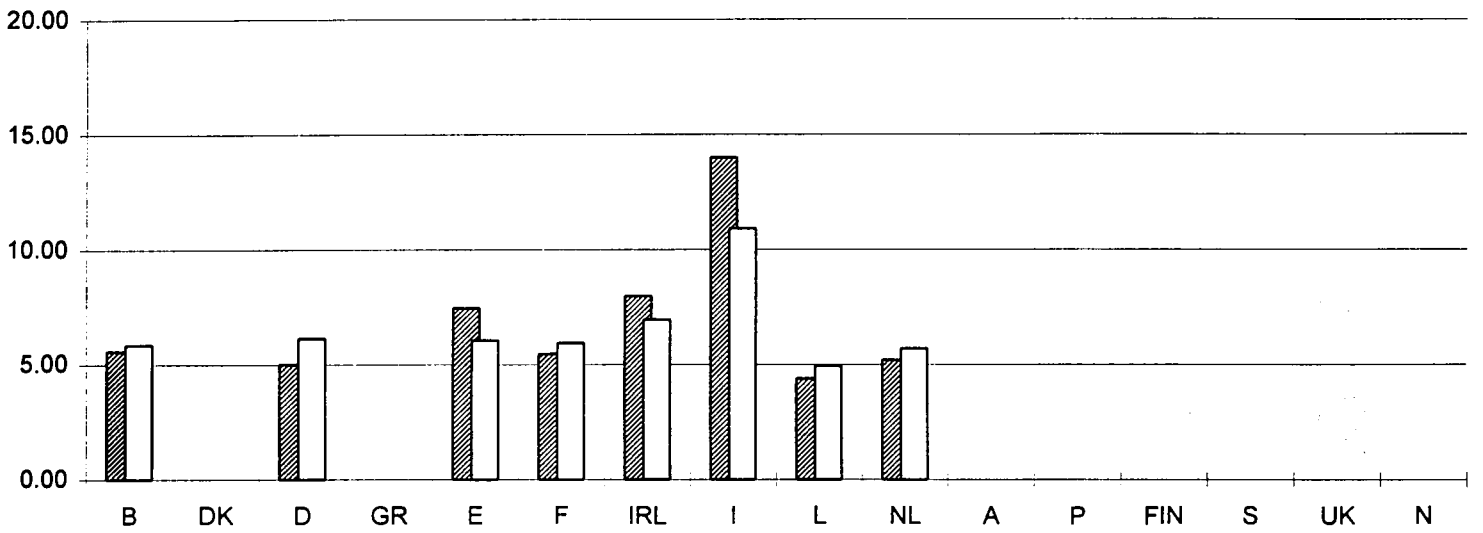
D3-B (3)



D4 (1)



D4 (2)



D4 (3)

