

1995 13

ISSN 1024-4328

Gas prices for EU households on 1 January 1995: downward trend

These comments are based on prices expressed in purchasing power standard (PPS). Tables and graphics also give the prices in ECU, which allows comparison in both units.

A study of the variations in VAT-excluded prices from 1 July to 1 January 1995 reveals that:

- In Belgium, prices for D_1^* and D_2 increased (0.7%) whereas prices for D_4 decreased (-0.3%).
- In Germany, the only recorded rises affected D_4 in Dresden (4.4 %) and D_{3-b} in Dortmund (0.1%). The greatest price reductions affected D_2 in Hamburg (-16.9%), D_4 in Dortmund (-14%) and Frankfurt/M (-7.3%) as well as D_3 in Munich (-6.8%). Prices for the other consumers underwent smaller reductions falls or remained unchanged.
- Prices for Ireland and Spain also remained unchanged.
- In France, the price reduction decreased while quantities consumed increased. It is between -3.1% (D_1) and -1.2% (D_4) in Paris and between -2% (D_1) and -0.3% (D_4) in Strasbourg.
- In Italy, there are strong disparities. Noticeable rises are recorded for D_1 and D_2 in Milan (6.1% and 6.8%), Turin (12.8% and 14.5%), Rome (5.7% and 6.3%) and Naples (5.1% and 5.6%), whereas prices for D_3 and D_4 show a fall of between -0.7% and -5.6%. In Genoa, D_1 and D_2 decreased by 0.2% whereas D_3 increased by 1.4%, D_{3-b} and D_4 increased by 0.1%.
- In Luxembourg, the drop was between -1% (D_1) and -2.4% (D_4).
- In the Netherlands, a rise of between 1.2% (D_1) and 1.8% (D_4) was recorded, whatever the volume consumed.
- In the United Kingdom, prices for D_1 increased in London (2.8%) whereas those for the other consumers showed a drop of between -1.9% and -2.3%.

* see table below for standard consumers definition.


Manuscript completed on = 15.05.1995

For further information please contact:
Eurostat, L-2920 Luxembourg, tel. 4301-32040 Fax: 4301-34771

Price (excl. VAT) in Luxembourg: Subscription ECU 240.
single copy ECU 6

Catalogue number: CA-NL-95-013-EN-C

Five household standard consumers, coded D₁ to D₄, were chosen:

		Annual consumption				
 eurostat	D ₁	8.37	GJ	(i.e.	2 326	kWh)
	D ₂ ⁽¹⁾	16.74	GJ	(i.e.	4 652	kWh)
	D ₃	83.70	GJ	(i.e.	23 260	kWh)
	D _{3b}	125.60	GJ	(i.e.	34 890	kWh)
	D ₄	1047.00	GJ	(i.e.	290 750	kWh)


(1) For the United Kingdom there is an additional standard consumer, i.e. D_{2-b} 33.49 GJ (9 300 kWh or 8 Gcal).

Prices for the standard consumers are given in national currencies, PPS (purchasing power standard as at 29 March for 1995) and in ECU (average value for January 1995).


Conversion table in PPS and ECU

B	DK	D	GR	E	F	IRL	I	L	NL	P	UK
BFR	DKR	DM	DR	PTA	FF	IRL	LIT	LFR	HFL	ESC	UKL
1 PPS =											
40,27	9,42	2,28	231,60	130,37	7,05	0,71	1693,38	43,11	2,29	133,25	0,69
1 ECU =											
39,16	7,49	1,90	295,70	164,52	6,57	0,80	1999,01	39,16	2,13	196,12	0,79

PRIX DU GAZ NATUREL POUR USAGES DOMESTIQUES

1 JANUAR 1995 1 JANUARY 1995 1 JANVIER 1995	NATIONALE WAEHRUNG / GJ NATIONAL CURRENCY / GJ MONNAIE NATIONALE/ GJ			KKS	PPS	SPA / GJ	ECUS/ GJ			
VERBRAUCHER-TYPEN STANDARD CONSUMERS CONSOMMATEURS TYPE	STEUERN INBEGR. WITH TAXES TAXES COMPRISES	OHNE MWST. VAT EXCL. HORS TVA	OHNE STEUERN TAXES EXCL. HORS TAXES	STEUERN INBEGR. WITH TAXES TAXES COMPRISES	OHNE MWST. VAT EXCL. HORS TVA	OHNE STEUERN TAXES EXCL. HORS TAXES	STEUERN INBEGR. WITH TAXES TAXES COMPRISES	OHNE MWST. VAT EXCL. HORS TVA	OHNE STEUERN TAXES EXCL. HORS TAXES	
BELGIQUE (BFR)										
D1	640.8	531.8	518.1	15.91	13.20	12.86	16.36	13.58	13.23	
D2	590.3	489.9	476.2	14.66	12.16	11.82	15.07	12.51	12.16	
D3	342.7	284.4	270.7	8.51	7.06	6.72	8.75	7.26	6.91	
D3-B	326.2	270.7	257.1	8.10	6.72	6.38	8.33	6.91	6.56	
D4	271.6	225.4	211.7	6.74	5.60	5.26	6.94	5.76	5.41	
BRUXELLES										
DEUTSCHLAND (DM)										
D1	35.78	31.11	30.11	15.67	13.62	13.18	18.82	16.36	15.84	
D2	26.83	23.33	22.33	11.75	10.21	9.78	14.11	12.27	11.75	
D3	17.12	14.89	13.89	7.50	6.52	6.08	9.00	7.83	7.31	
D3-B	16.10	14.00	13.00	7.05	6.13	5.69	8.47	7.36	6.84	
D4	12.87	11.19	10.19	5.63	4.90	4.46	6.77	5.89	5.36	
DUESSELDORF										
HAMBURG										
D1	37.34	32.47	31.47	16.35	14.22	13.78	19.64	17.08	16.55	
D2	24.98	21.72	20.72	10.94	9.51	9.07	13.14	11.42	10.90	
D3	17.06	14.83	13.83	7.47	6.49	6.06	8.97	7.80	7.27	
D3-B	16.39	14.25	13.25	7.18	6.24	5.80	8.62	7.50	6.97	
D4	14.02	12.19	11.19	6.14	5.34	4.90	7.37	6.41	5.89	
HANNOVER										
D1	33.19	28.86	27.86	14.53	12.64	12.20	17.46	15.18	14.65	
D2	26.16	22.75	21.75	11.45	9.96	9.52	13.76	11.97	11.44	
D3	16.83	14.64	13.64	7.37	6.41	5.97	8.85	7.70	7.17	
D3-B	15.97	13.89	12.89	6.99	6.08	5.64	8.40	7.31	6.78	
D4	13.99	12.17	11.17	6.13	5.33	4.89	7.36	6.40	5.88	
DORTMUND										
D1	37.76	32.83	31.83	16.53	14.37	13.94	19.86	17.27	16.74	
D2	26.23	22.81	21.81	11.48	9.99	9.55	13.80	12.00	11.47	
D3	15.75	13.69	12.69	6.90	5.99	5.56	8.28	7.20	6.67	
D3-B	14.53	12.64	11.64	6.36	5.53	5.10	7.64	6.65	6.12	
D4	11.69	10.17	9.17	5.12	4.45	4.01	6.15	5.35	4.82	
FRANKFURT/M										
D1	36.96	32.14	31.14	16.18	14.07	13.63	19.44	16.90	16.38	
D2	28.11	24.44	23.44	12.31	10.70	10.26	14.79	12.85	12.33	
D3	15.97	13.89	12.89	6.99	6.08	5.64	8.40	7.31	6.78	
D3-B	14.38	12.50	11.50	6.30	5.47	5.04	7.56	6.57	6.05	
D4	13.10	11.39	10.39	5.74	4.99	4.55	6.89	5.99	5.46	
STUTT GART										
D1	39.71	34.53	33.53	17.39	15.12	14.68	20.89	18.16	17.64	
D2	32.93	28.64	27.64	14.42	12.54	12.10	17.32	15.06	14.54	
D3	19.36	16.83	15.83	8.48	7.37	6.93	10.18	8.85	8.33	
D3-B	17.70	15.39	14.39	7.75	6.74	6.30	9.31	8.09	7.57	
D4	14.76	12.83	11.83	6.46	5.62	5.18	7.76	6.75	6.22	


PRIX DU GAZ NATUREL POUR USAGES DOMESTIQUES

1 JANUAR 1995 1 JANUARY 1995 1 JANVIER 1995	NATIONALE WAEHRUNG / GJ NATIONAL CURRENCY / GJ MONNAIE NATIONALE/ GJ			KKS	PPS	SPA / GJ	ECUS/ GJ			
VERBRAUCHER-TYPEN STANDARD CONSUMERS CONSUMMATEURS TYPE	STEUERN INBEGR. WITH TAXES TAXES COMPRISES	OHNE MWST. VAT EXCL. HORS TVA	OHNE STEUERN TAXES EXCL. HORS TAXES	STEUERN INBEGR. WITH TAXES TAXES COMPRISES	OHNE MWST. VAT EXCL. HORS TVA	OHNE STEUERN TAXES EXCL. HORS TAXES	STEUERN INBEGR. WITH TAXES TAXES COMPRISES	OHNE MWST. VAT EXCL. HORS TVA	OHNE STEUERN TAXES EXCL. HORS TAXES	
DEUTSCHLAND (DM)										
D1	30.67	26.67	25.67	13.43	11.68	11.24	16.13	14.03	13.50	
D2	24.09	20.94	19.94	10.55	9.17	8.73	12.67	11.01	10.49	
D3	17.63	15.33	14.33	7.72	6.71	6.27	9.27	8.06	7.54	
D3-B	16.07	13.97	12.97	7.04	6.12	5.68	8.45	7.35	6.82	
D4	14.34	12.47	11.47	6.28	5.46	5.02	7.54	6.56	6.03	
MUENCHEN										
D1	30.83	26.81	25.81	13.50	11.74	11.30	16.22	14.10	13.58	
D2	23.22	20.19	19.19	10.17	8.84	8.40	12.21	10.62	10.09	
D3	14.63	12.72	11.72	6.41	5.57	5.13	7.70	6.69	6.16	
D3-B	13.67	11.89	10.89	5.99	5.21	4.77	7.19	6.25	5.73	
D4	12.04	10.47	9.47	5.27	4.58	4.15	6.33	5.51	4.98	
WESER-EMS										
DRESDEN										
D1	43.38	37.72	36.72	18.99	16.51	16.08	22.82	19.84	19.31	
D2	31.98	27.81	26.81	14.00	12.18	11.74	16.82	14.63	14.10	
D3	18.97	16.50	15.50	8.31	7.22	6.79	9.98	8.68	8.15	
D3-B	17.54	15.25	14.25	7.68	6.68	6.24	9.23	8.02	7.50	
D4	15.68	13.64	12.64	6.87	5.97	5.53	8.25	7.17	6.65	
BERLIN										
D1	35.78	31.11	30.11	15.67	13.62	13.18	18.82	16.36	15.84	
D2	35.78	31.11	30.11	15.67	13.62	13.18	18.82	16.36	15.84	
D3	21.08	18.33	17.33	9.23	8.03	7.59	11.09	9.64	9.12	
D3-B	21.08	18.33	17.33	9.23	8.03	7.59	11.09	9.64	9.12	
D4	18.53	16.11	15.11	8.11	7.05	6.62	9.75	8.47	7.95	
ESPAÑA (PTA)										
MADRID (1)										
D1	2385.5	2056.5	2056.5	18.30	15.77	15.77	14.50	12.50	12.50	
D2	2100.2	1810.5	1810.5	16.11	13.89	13.89	12.77	11.00	11.00	
D3	1651.3	1423.5	1423.5	12.67	10.92	10.92	10.04	8.65	8.65	
D3-B	1607.0	1385.3	1385.3	12.33	10.63	10.63	9.77	8.42	8.42	
D4	1127.6	972.1	972.1	8.65	7.46	7.46	6.85	5.91	5.91	
FRANCE (CENT.)										
PARIS (2)										
D1	93.81	81.40	81.40	13.31	11.55	11.55	14.27	12.38	12.38	
D2	82.84	71.00	71.00	11.75	10.07	10.07	12.60	10.80	10.80	
D3	55.34	47.49	47.49	7.85	6.74	6.74	8.42	7.22	7.22	
D3-B	51.91	44.55	44.55	7.37	6.32	6.32	7.90	6.78	6.78	
D4	45.65	38.90	38.90	6.48	5.52	5.52	6.94	5.92	5.92	
STRASBOURG										
D1	128.62	108.45	108.45	18.25	15.39	15.39	19.57	16.50	16.50	
D2	105.80	89.21	89.21	15.01	12.66	12.66	16.10	13.57	13.57	
D3	61.74	52.06	52.06	8.76	7.39	7.39	9.39	7.92	7.92	
D3-B	59.60	50.25	50.25	8.46	7.13	7.13	9.07	7.64	7.64	
D4	52.77	44.49	44.49	7.49	6.31	6.31	8.03	6.77	6.77	


(1) PREISE AUCH GUELTIG FUER/ PRICES ALSO VALID FOR / PRIX EGALEMENT VALABLE POUR: BARCELONA, VALENCIA
UND FUER ORTGAS/ AND FOR GASWORKS GAS/ ET POUR GAZ D'USINE : MADRID, VALENCIA

(2) PREISE ZONE 1, UNTER ANDEREM AUCH GUELTIG FUER/ PRICES ZONE 1, ALSO VALID FOR / PRIX TARIFS ZONE 1,
EGALEMENT VALABLES POUR, ENTRE AUTRES : LILLE, LYON, TOULOUSE, MARSEILLE

PRIX DU GAZ NATUREL POUR USAGES DOMESTIQUES

1 JANUAR 1995 1 JANUARY 1995 1 JANVIER 1995	NATIONALE WAEHRUNG / GJ NATIONAL CURRENCY / GJ MONNAIE NATIONALE/ GJ			KKS PPS SPA / GJ			ECUS/ GJ			
VERBRAUCHER-TYPEN STANDARD CONSUMERS CONSOMMATEURS TYPE	STEUERN INBEGR. WITH TAXES TAXES COMPRISES	OHNE MWST. VAT EXCL. HORS TVA	OHNE STEUERN TAXES EXCL. HORS TAXES	STEUERN INBEGR. WITH TAXES TAXES COMPRISES	OHNE MWST. VAT EXCL. HORS TVA	OHNE STEUERN TAXES EXCL. HORS TAXES	STEUERN INBEGR. WITH TAXES TAXES COMPRISES	OHNE MWST. VAT EXCL. HORS TVA	OHNE STEUERN TAXES EXCL. HORS TAXES	
IRELAND (IRL)										
DUBLIN										
D1	15.72	13.97	13.97	22.02	19.57	19.57	19.72	17.53	17.53	
D2	13.41	11.92	11.92	18.78	16.70	16.70	16.83	14.96	14.96	
D3	6.40	5.69	5.69	8.96	7.97	7.97	8.03	7.14	7.14	
D3-B	6.40	5.69	5.69	8.96	7.97	7.97	8.03	7.14	7.14	
D4	6.40	5.69	5.69	8.96	7.97	7.97	8.03	7.14	7.14	
ITALIA (LIT)										
MILANO										
D1	21983	20168	18612	12.98	11.91	10.99	11.00	10.09	9.31	
D2	19679	18054	16495	11.62	10.66	9.74	9.84	9.03	8.25	
D3	27063	22742	15339	15.98	13.43	9.06	13.54	11.38	7.67	
D3-B	26995	22685	15100	15.94	13.40	8.92	13.50	11.35	7.55	
D4	26785	22509	14562	15.82	13.29	8.60	13.40	11.26	7.28	
TORINO										
D1	22439	20586	18638	13.25	12.16	11.01	11.23	10.30	9.32	
D2	20095	18435	16487	11.87	10.89	9.74	10.05	9.22	8.25	
D3	25434	21373	12927	15.02	12.62	7.63	12.72	10.69	6.47	
D3-B	25364	21314	12688	14.98	12.59	7.49	12.69	10.66	6.35	
D4	25866	21736	12750	15.27	12.84	7.53	12.94	10.87	6.38	
GENOVA										
D1	22438	20586	18638	13.25	12.16	11.01	11.22	10.30	9.32	
D2	20095	18436	16488	11.87	10.89	9.74	10.05	9.22	8.25	
D3	27394	23020	14573	16.18	13.59	8.61	13.70	11.52	7.29	
D3-B	27150	22815	13828	16.03	13.47	8.17	13.58	11.41	6.92	
D4	27150	22815	13828	16.03	13.47	8.17	13.58	11.41	6.92	
ROMA										
D1	23316	21391	19833	13.77	12.63	11.71	11.66	10.70	9.92	
D2	20972	19241	17682	12.38	11.36	10.44	10.49	9.63	8.85	
D3	27334	22970	15563	16.14	13.56	9.19	13.67	11.49	7.79	
D3-B	27264	22911	15324	16.10	13.53	9.05	13.64	11.46	7.67	
D4	30186	25366	17419	17.83	14.98	10.29	15.10	12.69	8.71	
NAPOLI										
D1	25837	23704	22223	15.26	14.00	13.12	12.92	11.86	11.12	
D2	23493	21552	20072	13.87	12.73	11.85	11.75	10.78	10.04	
D3	28517	26162	20198	16.84	15.45	11.93	14.27	13.09	10.10	
D3-B	28465	26115	19958	16.81	15.42	11.79	14.24	13.06	9.98	
D4	27415	25151	18606	16.19	14.85	10.99	13.71	12.58	9.31	
LUXEMBOURG (LFR)										
LUXEMBOURG-VILLE										
D1	493.15	465.23	465.23	11.44	10.79	10.79	12.59	11.88	11.88	
D2	420.96	397.13	397.13	9.76	9.21	9.21	10.75	10.14	10.14	
D3	213.52	201.43	201.43	4.95	4.67	4.67	5.45	5.14	5.14	
D3-B	208.62	196.82	196.82	4.84	4.57	4.57	5.33	5.03	5.03	
D4	199.79	188.48	188.48	4.63	4.37	4.37	5.10	4.81	4.81	

PRIX DU GAZ NATUREL POUR USAGES DOMESTIQUES

1 JANUAR 1995 1 JANUARY 1995 1 JANVIER 1995	NATIONALE WAEHRUNG / GJ NATIONAL CURRENCY / GJ MONNAIE NATIONALE/ GJ			KKS	PPS	SPA / GJ	ECUS/ GJ			
VERBRAUCHER-TYPEN STANDARD CONSUMERS CONSOMMATEURS TYPE	STEUERN INBEGR. WITH TAXES TAXES COMPRISES	OHNE MWST. VAT EXCL. HORS TVA	OHNE STEUERN TAXES EXCL. HORS TAXES	STEUERN INBEGR. WITH TAXES TAXES COMPRISES	OHNE MWST. VAT EXCL. HORS TVA	OHNE STEUERN TAXES EXCL. HORS TAXES	STEUERN INBEGR. WITH TAXES TAXES COMPRISES	OHNE MWST. VAT EXCL. HORS TVA	OHNE STEUERN TAXES EXCL. HORS TAXES	

	NEDERLAND (HFL)						ROTTERDAM		
D1	28.25	24.04	23.43	12.32	10.48	10.22	13.25	11.28	10.99
D2	21.30	18.13	17.51	9.29	7.91	7.64	9.99	8.51	8.22
D3	15.74	13.40	12.78	6.86	5.84	5.57	7.39	6.29	6.00
D3-B	15.28	13.00	12.39	6.66	5.67	5.40	7.17	6.10	5.81
D4	14.46	12.31	11.70	6.31	5.37	5.10	6.78	5.78	5.49

	UNITED-KINGDOM (UKL) (1)						LONDON (2)		
D1	8.41	7.78	7.78	12.17	11.26	11.26	10.67	9.87	9.87
D2	6.68	6.18	6.18	9.67	8.95	8.95	8.47	7.84	7.84
D3	4.77	4.42	4.42	6.90	6.40	6.40	6.05	5.61	5.61
D3-B	4.62	4.27	4.27	6.69	6.18	6.18	5.86	5.42	5.42
D2-B	5.49	5.08	5.08	7.95	7.35	7.35	6.96	6.44	6.44


(1) EXTRA STANDARD ABNEHMER "D2-B" NUR FUER VEREINIGTES KOENIGREICH

EXTRA STANDARD CONSUMER "D2-B" FOR UNITED-KINGDOM ONLY

CONSOMMATEUR TYPE SUPPLEMENTAIRE "D2-B", N'EXISTE QU' AU ROYAUME-UNI

(2) PREISE AUCH GUELTIG FUER/ PRICES ALSO VALID FOR / PRIX EGALEMENT VALABLE POUR: LEEDS, BIRMINGHAM

PRIX DU GAZ D'USINE POUR USAGES DOMESTIQUES

1 JANUAR 1995 1 JANUARY 1995 1 JANVIER 1995	NATIONALE WAEHRUNG / GJ NATIONAL CURRENCY / GJ MONNAIE NATIONALE/ GJ			KKS	PPS	SPA / GJ	ECUS/ GJ			
VERBRAUCHER-TYPEN STANDARD CONSUMERS CONSOMMATEURS TYPE	STEUERN INBEGR. WITH TAXES TAXES COMPRISES	OHNE MWST. VAT EXCL. HORS TVA	OHNE STEUERN TAXES EXCL. HORS TAXES	STEUERN INBEGR. WITH TAXES TAXES COMPRISES	OHNE MWST. VAT EXCL. HORS TVA	OHNE STEUERN TAXES EXCL. HORS TAXES	STEUERN INBEGR. WITH TAXES TAXES COMPRISES	OHNE MWST. VAT EXCL. HORS TVA	OHNE STEUERN TAXES EXCL. HORS TAXES	

	DANMARK (DKR)						KOBENHAVN		
D1	213.74	170.99	170.99	22.68	18.14	18.14	28.54	22.83	22.83
D2	201.83	161.46	161.46	21.41	17.13	17.13	26.95	21.56	21.56
D3	151.73	121.38	121.38	16.10	12.88	12.88	20.26	16.20	16.20
D3-B	142.38	113.90	113.90	15.11	12.08	12.08	19.01	15.21	15.21
D4	116.91	93.53	93.53	12.40	9.92	9.92	15.61	12.49	12.49

	PORTUGAL (ESC)						LISBOA		
D1	2909.00	2770.00	2770.00	21.83	20.79	20.79	14.83	14.12	14.12
D2	2909.00	2770.00	2770.00	21.83	20.79	20.79	14.83	14.12	14.12
D3	2909.00	2770.00	2770.00	21.83	20.79	20.79	14.83	14.12	14.12
D3-B	2909.00	2770.00	2770.00	21.83	20.79	20.79	14.83	14.12	14.12
D4									

NATURGASPREISE FUER HAUSHALTE
 GAS PRICES FOR HOUSEHOLDS
 PRIX DU GAZ POUR USAGES DOMESTIQUES

1995-1

1	B	BRUXELLES	9	L	LUXEMBOURG
2	DK	-	10	NL	ROTTERDAM
3	D	NATIONAL	11	P	-
4	GR	-	12	UK	LONDON
5	E	MADRID			
6	F	PARIS			
7	IRL	DUBLIN			
8	I	MILANO			

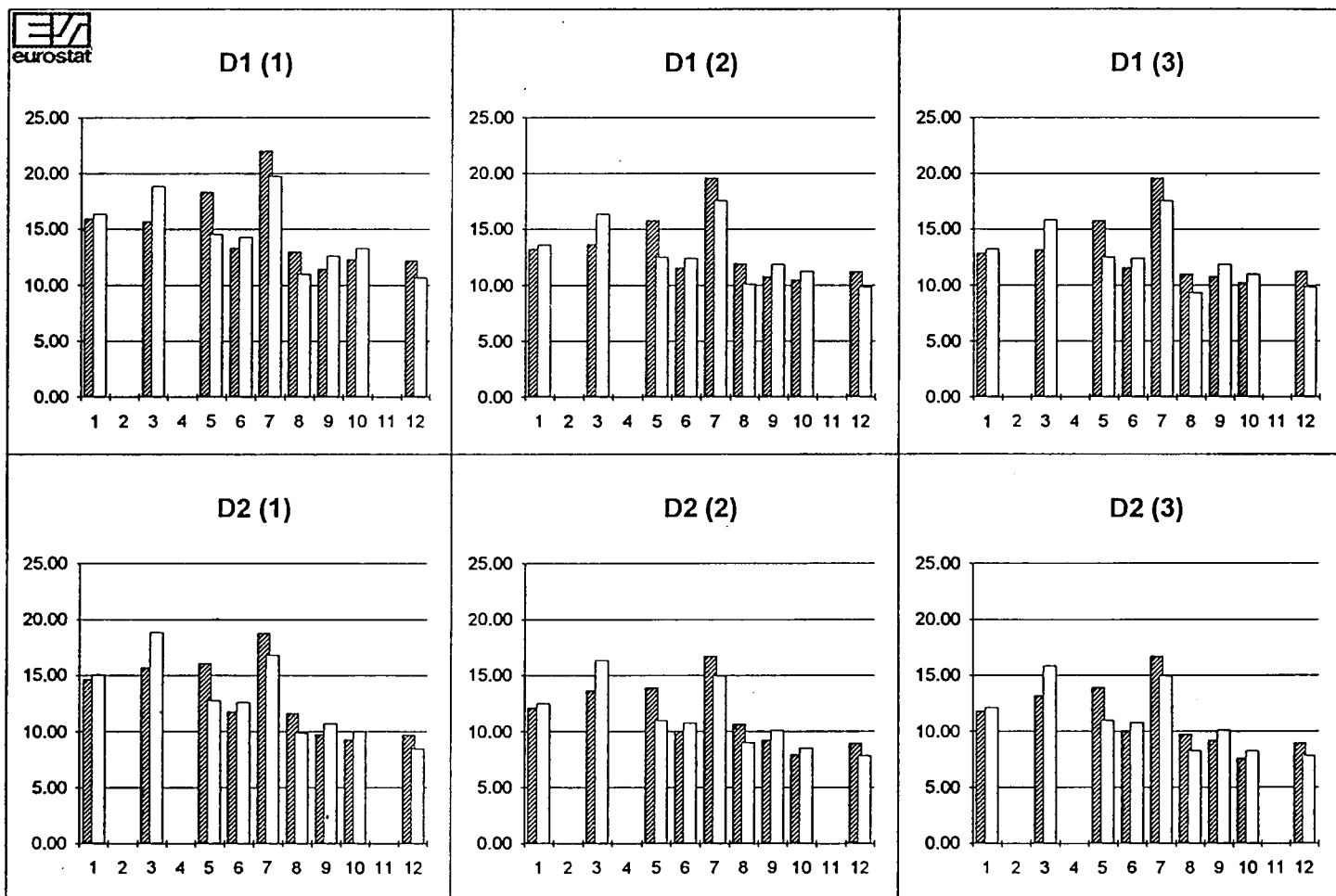
(1) STEUERN INBEGR./ TAXES INCL./
TAXES COMPRISES

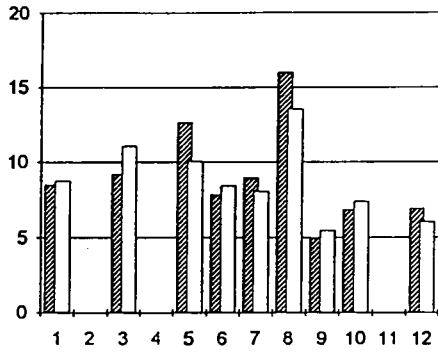
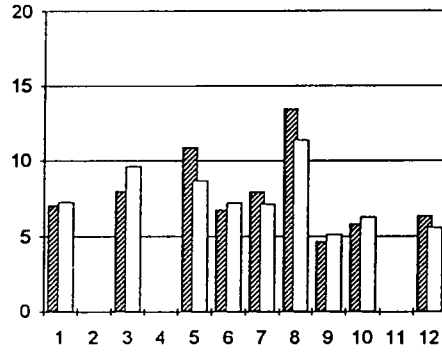
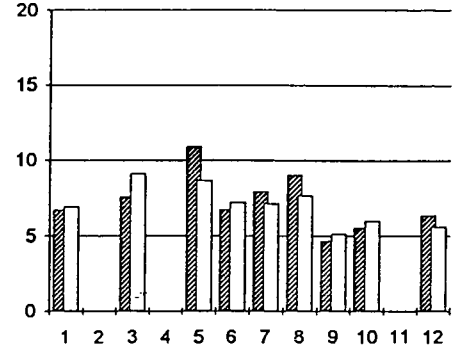
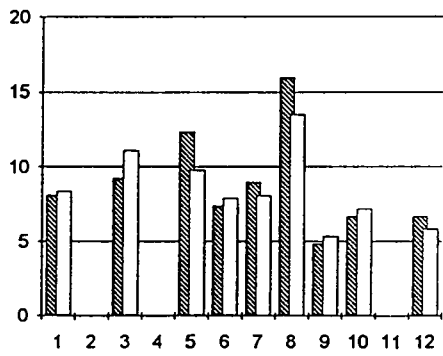
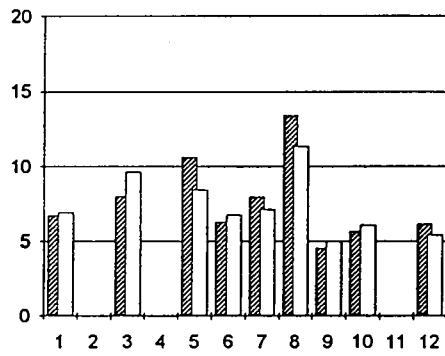
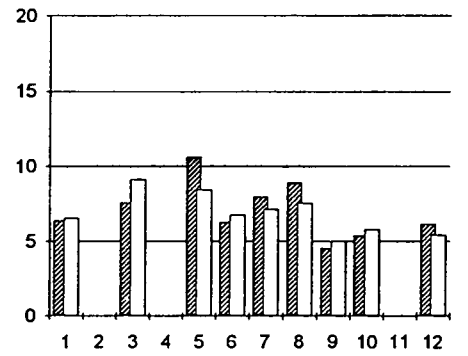
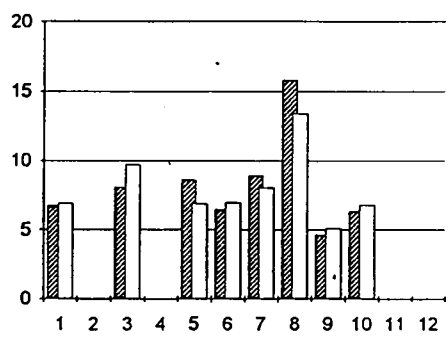
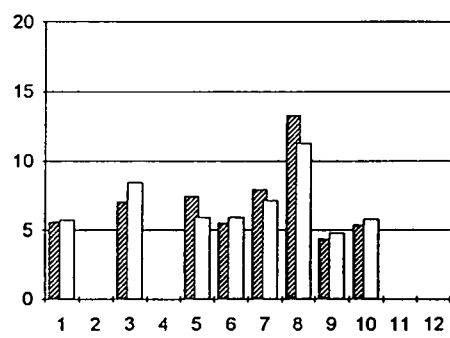
(2) OHNE MWST./ VAT EXCL./
HORS TVA

(3) OHNE STEUERN/TAXES EXCL./
HORS TAXES

 KKS-PPS-SPA / GJ

 ECU / GJ



D3 (1)**D3 (2)****D3 (3)****D3-B (1)****D3-B (2)****D3-B (3)****D4 (1)****D4 (2)****D4 (3)**