

1995 9

ISSN 1024-4328

Gas prices for EU industry on 1 January 1995: downward trend

These comments are based on prices expressed in purchasing power standards (PPS). Tables and graphics also give the prices in ECU, which allows comparison in both units.

A study of the variations in VAT-excluded prices from 1 July 1994 to 1 January 1995 reveals that:

- In Belgium prices recorded a drop of between -0.1% (I₁*) and -1.6 to -2% (I₅) according to the load factor.
- In Denmark prices of I₁ (-5.6%) and I₂ (-5.9%) went down, whereas those of I₃ (3.4%) and I₄ (10.2%) increased.
- In Germany prices for all consumers remained unchanged or decreased (up to -8.8% for I₁ in Munich), except those for I₅ which increased in Dortmund (2.1%), Düsseldorf (4.3%) and Munich (15.1%).
- In Spain and the Netherlands prices recorded a rise whatever the volume consumed: in Madrid this increase was mainly concentrated on I₁ (46.1%) and I₂ (10.5%), whereas in Rotterdam it affected mainly I₃ (9.6%) and I₄ (10.4%).
- In France prices for I₄ remained unchanged, whereas those for I₁ (-0.7%), I₂ (-0.4%) and I₃ (-1.7%) decreased; the drops are, however, lower in Strasbourg.
- In Ireland the rise affected only prices for I₃ (10.9%), prices for the other consumers remaining unchanged.
- In Italy a very marked drop (between -18.6 and -46%) was recorded for I₂, corresponding to the introduction, on 4 August 1994, of a new national tariff valid for this kind of industrial consumer.
- In Luxembourg the drop was between -1.0% (I₁) and -5.8% (I₄).
- In the United Kingdom the situation varied according to the city: in London prices for I₁ (-3.8%), I₂ (-5.2%) and I₃₋₁ (-3%) decreased, whereas those for I₃₋₂ (1.7%) increased; in Leeds, prices for I₁ (0.1%), I₂ (7.8%) and I₃₋₂ (0.8%) increased whereas those for I₃₋₁ (-3.6%) decreased; in Birmingham, the drop was spread over all consumers but not in proportion to the volume consumed - it was between -0.8% (I₁) and -10% (I₄₋₂).

* see table below for standard consumers definition.

Manuscript completed on = 26.04.1995

For further information please contact:
Eurostat, L-2920 Luxembourg, tel. 4301-32040 Fax: 4301-34771

Price (excl. VAT) in Luxembourg: Subscription ECU 240,
single copy ECU 6

Catalogue number: CA-NL-95-009-EN-C

Council Directive No 90/377/EEC of 29 June 1990 lays down a Community procedure to improve the transparency of gas and electricity prices charged to industrial end-users.

In accordance with Article 1.1, this note sets out the prices for standard consumers in force as at 1st January 1995.


Seven standard industrial users, coded I1 to I5 were chosen:

EU eurostat	Annual consumption				Modulation
	I1	418.60	GJ (i.e	116 300	kWh)
I2	4 186	GJ (i.e	1 163 000	KWh)	200 days
I3-1	41 860	GJ (i.e	11.63	GWh)	200 days 1 600 hours
I3-2	41 860	GJ (i.e	11.63	GWh)	250 days 4 000 hours
I4-1	418 600	GJ (i.e	116.30	GWh)	250 days 4 000 hours
I4-2	418 600	GJ (i.e	116.30	GWh)	330 days 8 000 hours
I5	4 186 000	GJ (i.e	1163.00	GWh)	330 days 8 000 hours


Prices for the standard consumers are given in national currencies, PPS (purchasing power standard as at 29 March for 1995) and in ECU (average value for January 1995).

B	DK	D	GR	E	F	IRL	I	L	NL	P	UK
BFR	DKR	DM	DR	PTA	FF	IRL	LIT	LFR	HFL	ESC	UKL
1 PPS =											
40,27	9,42	2,28	231,60	130,37	7,05	0,71	1693,38	43,11	2,29	133,25	0,69
1 ECU =											
39,16	7,49	1,90	295,70	164,52	6,57	0,80	1999,01	39,16	2,13	196,12	0,79


PRIX DU GAZ NATUREL POUR USAGES INDUSTRIELS

1 JANUAR 1995 1 JANUARY 1995 1 JANVIER 1995	NATIONALE WAEHRUNG / GJ NATIONAL CURRENCY / GJ MONNAIE NATIONALE/ GJ			KKS	PPS	SPA / GJ	ECUS/ GJ			
VERBRAUCHER-TYPEN STANDARD CONSUMERS CONSOMMATEURS TYPE	STEUERN INBEGR. WITH TAXES TAXES COMPRISES	OHNE MWST. VAT EXCL. HORS TVA	OHNE STEUERN TAXES EXCL. HORS TAXES	STEUERN INBEGR. WITH TAXES TAXES COMPRISES	OHNE MWST. VAT EXCL. HORS TVA	OHNE STEUERN TAXES EXCL. HORS TAXES	STEUERN INBEGR. WITH TAXES TAXES COMPRISES	OHNE MWST. VAT EXCL. HORS TVA	OHNE STEUERN TAXES EXCL. HORS TAXES	
BELGIQUE (BFR)										
				NATIONAL CNE 0 P 0.9						
I1	302.1	250.7	237.0	7.50	6.22	5.88	7.71	6.40	6.05	
I2	223.6	185.6	185.6	5.55	4.61	4.61	5.71	4.74	4.74	
I3-1	172.0	142.7	142.7	4.27	3.54	3.54	4.39	3.64	3.64	
I3-2	135.0	112.0	112.0	3.35	2.78	2.78	3.45	2.86	2.86	
I4-1	135.0	112.0	112.0	3.35	2.78	2.78	3.45	2.86	2.86	
I4-2	122.7	101.8	101.8	3.05	2.53	2.53	3.13	2.60	2.60	
I5	
NATIONAL CNE 0.5 P 1										
I1	302.1	250.7	237.0	7.50	6.22	5.88	7.71	6.40	6.05	
I2	223.6	185.6	185.6	5.55	4.61	4.61	5.71	4.74	4.74	
I3-1	186.8	155.0	155.0	4.64	3.85	3.85	4.77	3.96	3.96	
I3-2	149.8	124.3	124.3	3.72	3.09	3.09	3.83	3.17	3.17	
I4-1	149.8	124.3	124.3	3.72	3.09	3.09	3.83	3.17	3.17	
I4-2	137.5	114.1	114.1	3.41	2.83	2.83	3.51	2.91	2.91	
I5	
NATIONAL CNE 1.0 P 1 (1)										
I1	302.1	250.7	237.0	7.50	6.22	5.88	7.71	6.40	6.05	
I2	223.6	185.6	185.6	5.55	4.61	4.61	5.71	4.74	4.74	
I3-1	192.4	159.7	159.7	4.78	3.97	3.97	4.91	4.08	4.08	
I3-2	155.4	129.0	129.0	3.86	3.20	3.20	3.97	3.29	3.29	
I4-1	155.4	129.0	129.0	3.86	3.20	3.20	3.97	3.29	3.29	
I4-2	143.2	118.8	118.8	3.56	2.95	2.95	3.66	3.03	3.03	
I5	
NATIONAL CNE 1 P 1.1										
I1	302.1	250.7	237.0	7.50	6.22	5.88	7.71	6.40	6.05	
I2	223.6	185.6	185.6	5.55	4.61	4.61	5.71	4.74	4.74	
I3-1	202.8	168.3	168.3	5.04	4.18	4.18	5.18	4.30	4.30	
I3-2	165.8	137.6	137.6	4.12	3.42	3.42	4.23	3.51	3.51	
I4-1	165.8	137.6	137.6	4.12	3.42	3.42	4.23	3.51	3.51	
I4-2	153.4	127.3	127.3	3.81	3.16	3.16	3.92	3.25	3.25	
I5	
DANMARK (DKR)										
				NATIONAL						
I1	48.30	38.70	38.70	5.12	4.11	4.11	6.45	5.17	5.17	
I2	45.70	36.50	36.50	4.85	3.87	3.87	6.10	4.87	4.87	
I3-1	33.90	27.10	27.10	3.60	2.88	2.88	4.53	3.62	3.62	
I3-2	33.90	27.10	27.10	3.60	2.88	2.88	4.53	3.62	3.62	
I4-1	29.70	23.70	23.70	3.15	2.51	2.51	3.97	3.16	3.16	
I4-2	29.70	23.70	23.70	3.15	2.51	2.51	3.97	3.16	3.16	
I5	
DEUTSCHLAND (DM)										
				DUESSELDORF						
I1	16.68	14.50	13.50	7.30	6.35	5.91	8.77	7.63	7.10	
I2	12.46	10.83	9.83	5.46	4.74	4.30	6.55	5.70	5.17	
I3-1	12.27	10.67	9.67	5.37	4.67	4.23	6.45	5.61	5.09	
I3-2	11.72	10.19	9.19	5.13	4.46	4.02	6.16	5.36	4.83	
I4-1	10.38	9.03	8.03	4.54	3.95	3.52	5.46	4.75	4.22	
I4-2	9.84	8.56	7.56	4.31	3.75	3.31	5.18	4.50	3.98	
I5	6.13	5.33	4.33	2.68	2.33	1.90	3.22	2.80	2.28	

PRIX DU GAZ NATUREL POUR USAGES INDUSTRIELS

1 JANUAR 1995 1 JANUARY 1995 1 JANVIER 1995	NATIONALE WAEHRUNG / GJ NATIONAL CURRENCY / GJ MONNAIE NATIONALE/ GJ			KKS PPS SPA / GJ			ECUS/ GJ				
	VERBRAUCHER-TYPEN STANDARD CONSUMERS CONSOMMATEURS TYPE	STEUERN INBEGR. WITH TAXES TAXES COMPRISES	OHNE MWST. VAT EXCL. HORS TVA	OHNE STEUERN TAXES EXCL. HORS TAXES	STEUERN INBEGR. WITH TAXES TAXES COMPRISES	OHNE MWST. VAT EXCL. HORS TVA	OHNE STEUERN TAXES EXCL. HORS TAXES	STEUERN INBEGR. WITH TAXES TAXES COMPRISES	OHNE MWST. VAT EXCL. HORS TVA		OHNE STEUERN TAXES EXCL. HORS TAXES
	DEUTSCHLAND (DM)										
				HAMBURG							
11	12.91	11.22	10.22	5.65	4.91	4.47	6.79	5.90	5.38		
12	12.81	11.14	10.14	5.61	4.88	4.44	6.74	5.86	5.33		
13-1	11.05	9.61	8.61	4.84	4.21	3.77	5.81	5.05	4.53		
13-2	10.19	8.86	7.86	4.46	3.88	3.44	5.36	4.66	4.13		
14-1	9.30	8.08	7.08	4.07	3.54	3.10	4.89	4.25	3.72		
14-2		
15		
HANNOVER											
11	15.97	13.89	12.89	6.99	6.08	5.64	8.40	7.31	6.78		
12	12.33	10.72	9.72	5.40	4.69	4.26	6.49	5.64	5.11		
13-1	10.86	9.44	8.44	4.75	4.13	3.70	5.71	4.97	4.44		
13-2	10.77	9.36	8.36	4.72	4.10	3.66	5.66	4.92	4.40		
14-1	10.25	8.92	7.92	4.49	3.91	3.47	5.39	4.69	4.17		
14-2		
15		
DORTMUND											
11	12.68	11.03	10.03	5.55	4.83	4.39	6.67	5.80	5.28		
12	10.93	9.50	8.50	4.79	4.16	3.72	5.75	5.00	4.47		
13-1	10.61	9.22	8.22	4.65	4.04	3.60	5.58	4.85	4.32		
13-2	10.22	8.89	7.89	4.47	3.89	3.45	5.38	4.68	4.15		
14-1	9.58	8.33	7.33	4.19	3.65	3.21	5.04	4.38	3.86		
14-2	9.23	8.03	7.03	4.04	3.52	3.08	4.85	4.22	3.70		
15	6.13	5.33	4.33	2.68	2.33	1.90	3.22	2.80	2.28		
FRANKFURT/M											
11	13.45	11.69	10.69	5.89	5.12	4.68	7.07	6.15	5.62		
12	12.46	10.83	9.83	5.46	4.74	4.30	6.55	5.70	5.17		
13-1	10.89	9.47	8.47	4.77	4.15	3.71	5.73	4.98	4.46		
13-2	10.54	9.17	8.17	4.61	4.01	3.58	5.54	4.82	4.30		
14-1	10.13	8.81	7.81	4.44	3.86	3.42	5.33	4.63	4.11		
14-2	9.81	8.53	7.53	4.30	3.73	3.30	5.16	4.49	3.96		
15		
STUTT GART											
11	15.30	13.31	12.31	6.70	5.83	5.39	8.05	7.00	6.47		
12	13.77	11.97	10.97	6.03	5.24	4.80	7.24	6.30	5.77		
13-1	13.32	11.58	10.58	5.83	5.07	4.63	7.01	6.09	5.56		
13-2	12.01	10.44	9.44	5.26	4.57	4.13	6.32	5.49	4.97		
14-1	11.21	9.75	8.75	4.91	4.27	3.83	5.90	5.13	4.60		
14-2	9.77	8.50	7.50	4.28	3.72	3.28	5.14	4.47	3.94		
15		
MUENCHEN											
11	14.50	12.61	11.61	6.35	5.52	5.08	7.63	6.63	6.11		
12	13.74	11.94	10.94	6.02	5.23	4.79	7.23	6.28	5.75		
13-1	12.97	11.28	10.28	5.68	4.94	4.50	6.82	5.93	5.41		
13-2	10.77	9.36	8.36	4.72	4.10	3.66	5.66	4.92	4.40		
14-1	10.32	8.97	7.97	4.52	3.93	3.49	5.43	4.72	4.19		
14-2	9.68	8.42	7.42	4.24	3.69	3.25	5.09	4.43	3.90		
15	6.39	5.56	4.56	2.80	2.43	2.00	3.36	2.92	2.40		

PRIX DU GAZ NATUREL POUR USAGES INDUSTRIELS

1 JANUAR 1995 1 JANUARY 1995 1 JANVIER 1995	NATIONALE WAEHRUNG / GJ NATIONAL CURRENCY / GJ MONNAIE NATIONALE/ GJ			KKS	PPS	SPA / GJ	ECUS/ GJ			
VERBRAUCHER-TYPEN STANDARD CONSUMERS CONSOMMATEURS TYPE	STEUERN INBEGR. WITH TAXES TAXES COMPRISES	OHNE MWST. VAT EXCL. HORS TVA	OHNE STEUERN TAXES EXCL. HORS TAXES	STEUERN INBEGR. WITH TAXES TAXES COMPRISES	OHNE MWST. VAT EXCL. HORS TVA	OHNE STEUERN TAXES EXCL. HORS TAXES	STEUERN INBEGR. WITH TAXES TAXES COMPRISES	OHNE MWST. VAT EXCL. HORS TVA	OHNE STEUERN TAXES EXCL. HORS TAXES	

	DEUTSCHLAND (DM)			WESER-EMS					
I1	12.39	10.78	9.78	5.42	4.72	4.28	6.52	5.67	5.14
I2	11.21	9.75	8.75	4.91	4.27	3.83	5.90	5.13	4.60
I3-1	8.94	7.78	6.78	3.91	3.41	2.97	4.70	4.09	3.57
I3-2	8.94	7.78	6.78	3.91	3.41	2.97	4.70	4.09	3.57
I4-1	7.70	6.69	5.69	3.37	2.93	2.49	4.05	3.52	2.99
I4-2	7.70	6.69	5.69	3.37	2.93	2.49	4.05	3.52	2.99
I5	7.09	6.17	5.17	3.10	2.70	2.26	3.73	3.25	2.72

	DRESDEN								
I1	15.33	13.33	12.33	6.71	5.84	5.40	8.06	7.01	6.49
I2	12.59	10.94	9.94	5.51	4.79	4.35	6.62	5.75	5.23
I3-1	11.40	9.92	8.92	4.99	4.34	3.91	6.00	5.22	4.69
I3-2	10.77	9.36	8.36	4.72	4.10	3.66	5.66	4.92	4.40
I4-1	8.82	7.67	6.67	3.86	3.36	2.92	4.64	4.03	3.51
I4-2
I5

	BERLIN								
I1	18.37	15.97	14.97	8.04	6.99	6.55	9.66	8.40	7.87
I2	13.48	11.72	10.72	5.90	5.13	4.69	7.09	6.16	5.64
I3-1	13.23	11.50	10.50	5.79	5.04	4.60	6.96	6.05	5.52
I3-2	13.23	11.50	10.50	5.79	5.04	4.60	6.96	6.05	5.52
I4-1	11.50	10.00	9.00	5.04	4.38	3.94	6.05	5.26	4.73
I4-2	11.18	9.72	8.72	4.89	4.26	3.82	5.88	5.11	4.59
I5


	ESPANA (PTA)			MADRID (1)					
I1	2204.20	1900.10	1900.10	16.91	14.57	14.57	13.40	11.55	11.55
I2	963.00	830.20	830.20	7.39	6.37	6.37	5.85	5.05	5.05
I3-1	605.20	521.70	521.70	4.64	4.00	4.00	3.68	3.17	3.17
I3-2	582.90	502.50	502.50	4.47	3.85	3.85	3.54	3.05	3.05
I4-1	534.80	461.10	461.10	4.10	3.54	3.54	3.25	2.80	2.80
I4-2	534.80	461.10	461.10	4.10	3.54	3.54	3.25	2.80	2.80
I5

	FRANCE (FF)			PARIS					
I1	46.97	39.60	39.60	6.66	5.62	5.62	7.15	6.02	6.02
I2	39.58	33.37	33.37	5.62	4.73	4.73	6.02	5.08	5.08
I3-1	26.68	22.50	21.32	3.79	3.19	3.03	4.06	3.42	3.24
I3-2	24.46	20.63	19.45	3.47	2.93	2.76	3.72	3.14	2.96
I4-1	22.33	18.83	16.91	3.17	2.67	2.40	3.40	2.86	2.57
I4-2	21.72	18.32	16.40	3.08	2.60	2.33	3.30	2.79	2.49
I5


	LILLE								
I1	46.97	39.60	39.60	6.66	5.62	5.62	7.15	6.02	6.02
I2	39.58	33.37	33.37	5.62	4.73	4.73	6.02	5.08	5.08
I3-1	26.68	22.50	21.32	3.79	3.19	3.03	4.06	3.42	3.24
I3-2	24.46	20.63	19.45	3.47	2.93	2.76	3.72	3.14	2.96
I4-1	22.21	18.73	16.81	3.15	2.66	2.39	3.38	2.85	2.56
I4-2	21.59	18.20	16.28	3.06	2.58	2.31	3.28	2.77	2.48
I5

(1) GUELTFIGE PREISE FUR DIE ANDEREN STELLEN/ PRICES VALID ALSO FOR THE OTHER LOCATIONS/
PRIX VALABLES EGALEMENT POUR LES AUTRES PLACES


PRIX DU GAZ NATUREL POUR USAGES INDUSTRIELS

1 JANUAR 1995 1 JANUARY 1995 1 JANVIER 1995	NATIONALE WAEHRUNG / GJ NATIONAL CURRENCY / GJ MONNAIE NATIONALE/ GJ			KKS PPS SPA / GJ			ECUS/ GJ			 eurostat
VERBRAUCHER-TYPEN STANDARD CONSUMERS CONSOMMATEURS TYPE	STEUERN INBEGR. WITH TAXES TAXES COMPRISES	OHNE MWST. VAT EXCL. HORS TVA	OHNE STEUERN TAXES EXCL. HORS TAXES	STEUERN INBEGR. WITH TAXES TAXES COMPRISES	OHNE MWST. VAT EXCL. HORS TVA	OHNE STEUERN TAXES EXCL. HORS TAXES	STEUERN INBEGR. WITH TAXES TAXES COMPRISES	OHNE MWST. VAT EXCL. HORS TVA	OHNE STEUERN TAXES EXCL. HORS TAXES	
	FRANCE (FF)			STRASBOURG						
I1	54.34	45.81	45.81	7.71	6.50	6.50	8.27	6.97	6.97	
I2	47.71	40.23	40.23	6.77	5.71	5.71	7.26	6.12	6.12	
I3-1	30.96	26.10	24.86	4.39	3.70	3.53	4.71	3.97	3.78	
I3-2	29.39	24.78	23.54	4.17	3.52	3.34	4.47	3.77	3.58	
I4-1	
I4-2	
I5	
	FRANCE (FF)			LYON						
I1	46.97	39.60	39.60	6.66	5.62	5.62	7.15	6.02	6.02	
I2	39.58	33.37	33.37	5.62	4.73	4.73	6.02	5.08	5.08	
I3-1	26.68	22.50	21.32	3.79	3.19	3.03	4.06	3.42	3.24	
I3-2	24.46	20.63	19.45	3.47	2.93	2.76	3.72	3.14	2.96	
I4-1	21.93	18.49	16.57	3.11	2.62	2.35	3.34	2.81	2.52	
I4-2	21.24	17.91	15.99	3.01	2.54	2.27	3.23	2.72	2.43	
I5	
	FRANCE (FF)			MARSEILLE						
I1	46.97	39.60	39.60	6.66	5.62	5.62	7.15	6.02	6.02	
I2	39.58	33.37	33.37	5.62	4.73	4.73	6.02	5.08	5.08	
I3-1	26.68	22.50	21.32	3.79	3.19	3.03	4.06	3.42	3.24	
I3-2	24.46	20.63	19.45	3.47	2.93	2.76	3.72	3.14	2.96	
I4-1	22.28	18.79	16.87	3.16	2.67	2.39	3.39	2.86	2.57	
I4-2	21.66	18.26	16.34	3.07	2.59	2.32	3.30	2.78	2.49	
I5	
	FRANCE (FF)			TOULOUSE						
I1	46.97	39.60	39.60	6.66	5.62	5.62	7.15	6.02	6.02	
I2	39.58	33.37	33.37	5.62	4.73	4.73	6.02	5.08	5.08	
I3-1	26.68	22.50	21.32	3.79	3.19	3.03	4.06	3.42	3.24	
I3-2	24.46	20.63	19.45	3.47	2.93	2.76	3.72	3.14	2.96	
I4-1	21.90	18.47	16.55	3.11	2.62	2.35	3.33	2.81	2.52	
I4-2	
I5	
	IRELAND (IRL)			DUBLIN						
I1	6.18	5.49	5.49	8.66	7.69	7.69	7.75	6.89	6.89	
I2	5.01	4.46	4.46	7.02	6.25	6.25	6.29	5.60	5.60	
I3-1	2.85	2.54	2.54	3.99	3.56	3.56	3.58	3.19	3.19	
I3-2	2.85	2.54	2.54	3.99	3.56	3.56	3.58	3.19	3.19	
I4-1	
I4-2	
I5	
	ITALIA (LIT)			MILANO						
I1	18257	15342	14563	10.78	9.06	8.60	9.13	7.67	7.29	
I2	12969	10898	10119	7.66	6.44	5.98	6.49	5.45	5.06	
I3-1	7999	7338	6551	4.72	4.33	3.87	4.00	3.67	3.28	
I3-2	7687	7053	6265	4.54	4.17	3.70	3.85	3.53	3.13	
I4-1	7136	6547	5759	4.21	3.87	3.40	3.57	3.28	2.88	
I4-2	6785	6225	5438	4.01	3.68	3.21	3.39	3.11	2.72	
I5	

PRIX DU GAZ NATUREL POUR USAGES INDUSTRIELS

1 JANUAR 1995 1 JANUARY 1995 1 JANVIER 1995	NATIONALE WAEHRUNG / GJ NATIONAL CURRENCY / GJ MONNAIE NATIONALE/ GJ			KKS PPS SPA / GJ			ECUS/ GJ				
	VERBRAUCHER-TYPEN	STEUERN INBEGR.	OHNE MWST.	OHNE STEUERN	STEUERN INBEGR.	OHNE MWST.	OHNE STEUERN	STEUERN INBEGR.	OHNE MWST.		OHNE STEUERN
	STANDARD CONSUMERS CONSOUMMATEURS TYPE	WITH TAXES TAXES COMPRISES	VAT EXCL. HORS TVA	TAXES EXCL. HORS TAXES	WITH TAXES TAXES COMPRISES	VAT EXCL. HORS TVA	TAXES EXCL. HORS TAXES	WITH TAXES TAXES COMPRISES	VAT EXCL. HORS TVA		TAXES EXCL. HORS TAXES
ITALIA (LIT)											
I1	16100	13529	12750	9.51	7.99	7.53	8.05	6.77	6.38		
I2	12972	10901	10122	7.66	6.44	5.98	6.49	5.45	5.06		
I3-1	7999	7338	6551	4.72	4.33	3.87	4.00	3.67	3.28		
I3-2	7687	7053	6265	4.54	4.17	3.70	3.85	3.53	3.13		
I4-1	7136	6547	5759	4.21	3.87	3.40	3.57	3.28	2.88		
I4-2	6785	6225	5438	4.01	3.68	3.21	3.39	3.11	2.72		
I5	
TORINO											
I1	17383	14607	13828	10.27	8.63	8.17	8.70	7.31	6.92		
I2	12963	10893	10114	7.66	6.43	5.97	6.48	5.45	5.06		
I3-1	7999	7338	6551	4.72	4.33	3.87	4.00	3.67	3.28		
I3-2	7687	7053	6265	4.54	4.17	3.70	3.85	3.53	3.13		
I4-1	7136	6547	5759	4.21	3.87	3.40	3.57	3.28	2.88		
I4-2	6785	6225	5438	4.01	3.68	3.21	3.39	3.11	2.72		
I5	
GENOVA											
I1	21656	18198	17419	12.79	10.75	10.29	10.83	9.10	8.71		
I2	12972	10901	10122	7.66	6.44	5.98	6.49	5.45	5.06		
I3-1	7999	7338	6551	4.72	4.33	3.87	4.00	3.67	3.28		
I3-2	7687	7053	6265	4.54	4.17	3.70	3.85	3.53	3.13		
I4-1	7136	6547	5759	4.21	3.87	3.40	3.57	3.28	2.88		
I4-2	6785	6225	5438	4.01	3.68	3.21	3.39	3.11	2.72		
I5	
ROMA											
I1	23068	19385	18606	13.62	11.45	10.99	11.54	9.70	9.31		
I2	12972	10901	10122	7.66	6.44	5.98	6.49	5.45	5.06		
I3-1	7999	7338	6551	4.72	4.33	3.87	4.00	3.67	3.28		
I3-2	7687	7053	6265	4.54	4.17	3.70	3.85	3.53	3.13		
I4-1	7136	6547	5759	4.21	3.87	3.40	3.57	3.28	2.88		
I4-2	6785	6225	5438	4.01	3.68	3.21	3.39	3.11	2.72		
I5	
NAPOLI											
I1	206.18	194.51	194.51	4.78	4.51	4.51	5.26	4.97	4.97		
I2	186.67	176.10	176.10	4.33	4.08	4.08	4.77	4.50	4.50		
I3-1	182.71	172.37	172.37	4.24	4.00	4.00	4.67	4.40	4.40		
I3-2	160.58	151.49	151.49	3.72	3.51	3.51	4.10	3.87	3.87		
I4-1	159.91	150.86	150.86	3.71	3.50	3.50	4.08	3.85	3.85		
I4-2	159.91	150.86	150.86	3.71	3.50	3.50	4.08	3.85	3.85		
I5	
LUXEMBOURG (LFR)											
I1	14.63	12.45	11.84	6.38	5.43	5.16	6.86	5.84	5.56		
I2	14.38	12.24	11.62	6.27	5.34	5.07	6.75	5.74	5.45		
I3-1	9.23	7.86	7.42	4.02	3.43	3.24	4.33	3.69	3.48		
I3-2	9.23	7.86	7.42	4.02	3.43	3.24	4.33	3.69	3.48		
I4-1	7.64	6.50	5.93	3.33	2.83	2.59	3.58	3.05	2.78		
I4-2	7.64	6.50	5.93	3.33	2.83	2.59	3.58	3.05	2.78		
I5	6.58	5.60	5.18	2.87	2.44	2.26	3.09	2.63	2.43		
LUXEMBOURG-VILLE											
I1	14.63	12.45	11.84	6.38	5.43	5.16	6.86	5.84	5.56		
I2	14.38	12.24	11.62	6.27	5.34	5.07	6.75	5.74	5.45		
I3-1	9.23	7.86	7.42	4.02	3.43	3.24	4.33	3.69	3.48		
I3-2	9.23	7.86	7.42	4.02	3.43	3.24	4.33	3.69	3.48		
I4-1	7.64	6.50	5.93	3.33	2.83	2.59	3.58	3.05	2.78		
I4-2	7.64	6.50	5.93	3.33	2.83	2.59	3.58	3.05	2.78		
I5	6.58	5.60	5.18	2.87	2.44	2.26	3.09	2.63	2.43		
NEDERLAND (HFL)											
I1	14.63	12.45	11.84	6.38	5.43	5.16	6.86	5.84	5.56		
I2	14.38	12.24	11.62	6.27	5.34	5.07	6.75	5.74	5.45		
I3-1	9.23	7.86	7.42	4.02	3.43	3.24	4.33	3.69	3.48		
I3-2	9.23	7.86	7.42	4.02	3.43	3.24	4.33	3.69	3.48		
I4-1	7.64	6.50	5.93	3.33	2.83	2.59	3.58	3.05	2.78		
I4-2	7.64	6.50	5.93	3.33	2.83	2.59	3.58	3.05	2.78		
I5	6.58	5.60	5.18	2.87	2.44	2.26	3.09	2.63	2.43		
ROTTERDAM											

PRIX DU GAZ NATUREL POUR USAGES INDUSTRIELS

1 JANUAR 1995 1 JANUARY 1995 1 JANVIER 1995	NATIONALE WAEHRUNG / GJ NATIONAL CURRENCY / GJ MONNAIE NATIONALE/ GJ			KKS PPS SPA / GJ			ECUS/ GJ				
	VERBRAUCHER-TYPEN	STEUERN INBEGR.	OHNE MWST.	OHNE STEUERN	STEUERN INBEGR.	OHNE MWST.	OHNE STEUERN	STEUERN INBEGR.	OHNE MWST.		OHNE STEUERN
	STANDARD CONSUMERS CONSOMMATEURS TYPE	WITH TAXES TAXES COMPRISES	VAT EXCL. HORS TVA	TAXES EXCL. HORS TAXES	WITH TAXES TAXES COMPRISES	VAT EXCL. HORS TVA	TAXES EXCL. HORS TAXES	WITH TAXES TAXES COMPRISES	VAT EXCL. HORS TVA		TAXES EXCL. HORS TAXES

UNITED-KINGDOM (UKL)

	UNITED-KINGDOM (UKL)			LONDON					
I1	3.91	3.33	3.33	5.66	4.81	4.81	4.96	4.22	4.22
I2	3.51	2.98	2.98	5.07	4.32	4.32	4.45	3.78	3.78
I3-1	3.08	2.62	2.62	4.46	3.79	3.79	3.91	3.32	3.32
I3-2	3.03	2.58	2.58	4.38	3.73	3.73	3.84	3.27	3.27
I4-1	3.01	2.56	2.56	4.35	3.71	3.71	3.82	3.25	3.25
I4-2	2.66	2.27	2.27	3.85	3.28	3.28	3.38	2.87	2.87
I5

LEEDS

	LEEDS								
I1	4.00	3.40	3.40	5.79	4.92	4.92	5.07	4.32	4.32
I2	3.65	3.11	3.11	5.29	4.50	4.50	4.63	3.94	3.94
I3-1	3.12	2.66	2.66	4.52	3.84	3.84	3.96	3.37	3.37
I3-2	3.26	2.77	2.77	4.71	4.01	4.01	4.13	3.52	3.52
I4-1
I4-2
I5


BIRMINGHAM

	BIRMINGHAM								
I1	4.03	3.43	3.43	5.83	4.97	4.97	5.11	4.35	4.35
I2	3.48	2.96	2.96	5.03	4.28	4.28	4.41	3.75	3.75
I3-1	3.04	2.59	2.59	4.40	3.75	3.75	3.86	3.28	3.28
I3-2	2.85	2.43	2.43	4.13	3.51	3.51	3.62	3.08	3.08
I4-1	2.71	2.31	2.31	3.93	3.34	3.34	3.44	2.93	2.93
I4-2
I5

ORTGASPREISE FUER DIE INDUSTRIE

GASWORKS GAS PRICES FOR INDUSTRY

PRIX DU GAZ D'USINE POUR USAGES INDUSTRIELS

1 JANUAR 1995 1 JANUARY 1995 1 JANVIER 1995	NATIONALE WAEHRUNG / GJ NATIONAL CURRENCY / GJ MONNAIE NATIONALE/ GJ			KKS PPS SPA / GJ			ECUS/ GJ				
	VERBRAUCHER-TYPEN	STEUERN INBEGR.	OHNE MWST.	OHNE STEUERN	STEUERN INBEGR.	OHNE MWST.	OHNE STEUERN	STEUERN INBEGR.	OHNE MWST.		OHNE STEUERN
	STANDARD CONSUMERS CONSOMMATEURS TYPE	WITH TAXES TAXES COMPRISES	VAT EXCL. HORS TVA	TAXES EXCL. HORS TAXES	WITH TAXES TAXES COMPRISES	VAT EXCL. HORS TVA	TAXES EXCL. HORS TAXES	WITH TAXES TAXES COMPRISES	VAT EXCL. HORS TVA		TAXES EXCL. HORS TAXES

DANMARK (DKR) (1)

	DANMARK (DKR) (1)			KOBENHAVN					
I1	124.14	99.31	99.31	13.17	10.54	10.54	16.57	13.26	13.26
I2	112.80	90.24	90.24	11.97	9.57	9.57	15.06	12.05	12.05
I3-1
I3-2
I4-1
I4-2
I5

PORTUGAL (ESC)

	PORTUGAL (ESC)			LISBOA					
I1	2909.00	2770.00	2770.00	21.83	20.79	20.79	14.83	14.12	14.12
I2	2909.00	2770.00	2770.00	21.83	20.79	20.79	14.83	14.12	14.12
I3-1	1217.00	1159.00	1159.00	9.13	8.70	8.70	6.21	5.91	5.91
I3-2	1217.00	1159.00	1159.00	9.13	8.70	8.70	6.21	5.91	5.91
I4-1
I4-2
I5

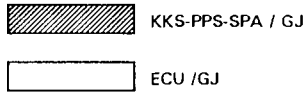
NATURGASPREISE FUER DIE INDUSTRIE

1995-1

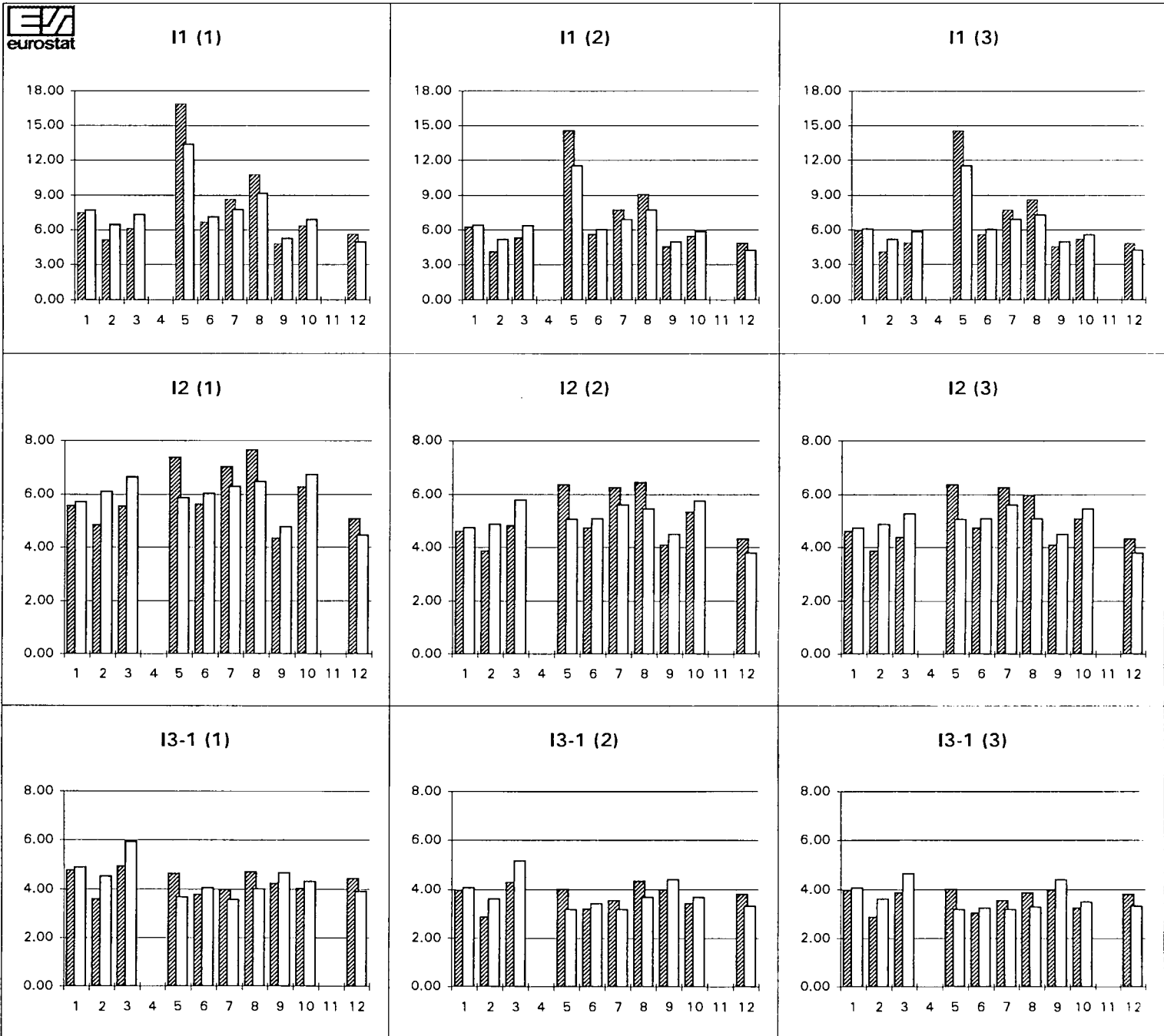
NATURAL GAS PRICES FOR INDUSTRY

PRIX DU GAZ NATUREL POUR USAGES INDUSTRIELS

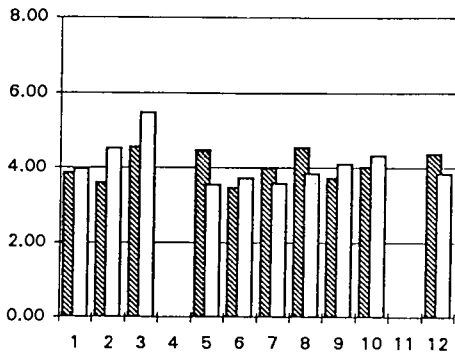
1	B	BRUXELLES*	10	NL	ROTTERDAM
2	DK	DANMARK NATIONAL	11	P	-
3	D	NATIONAL	12	UK	LONDON
4	GR	-			
5	E	MADRID			* (CNE 1.0 P 1.0)
6	F	PARIS			
7	IRL	DUBLIN			
8	I	MILANO			
9	L	LUXEMBOURG			



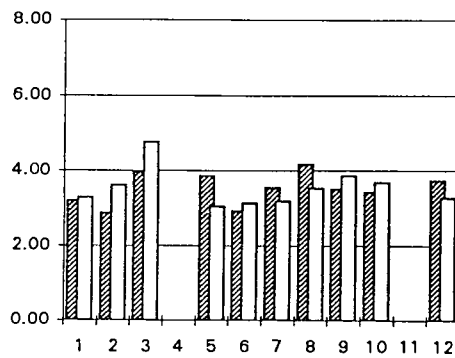
- (1) STEUERN INBEGR./ TAXES INCL./ TAXES COMPRISES
- (2) OHNE MWSt./VAT EXCL./ HORS TVA
- (3) OHNE STEUERN/TAXES EXCL./ HORS TAXES



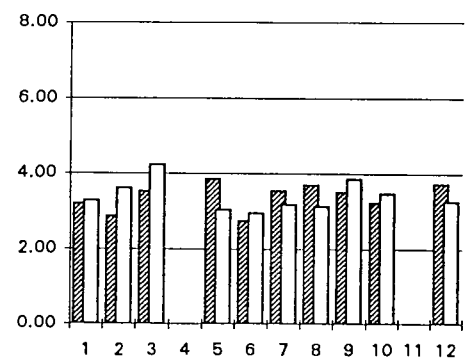
I3-2 (1)



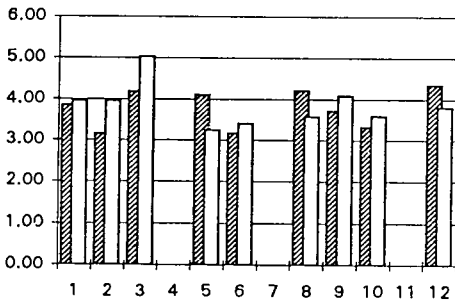
I3-2 (2)



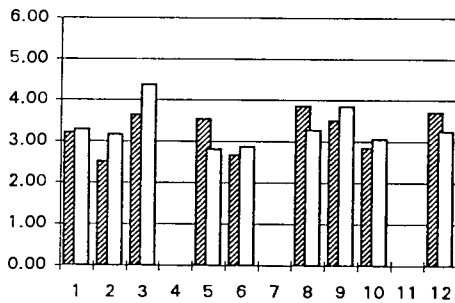
I3-2 (3)



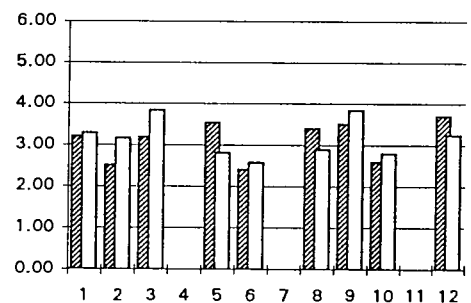
I4-1 (1)



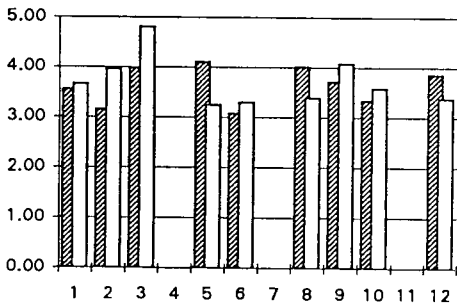
I4-1 (2)



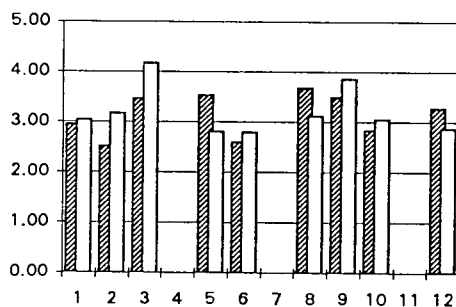
I4-1 (3)



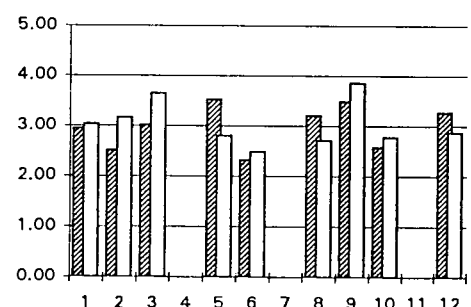
I4-2 (1)



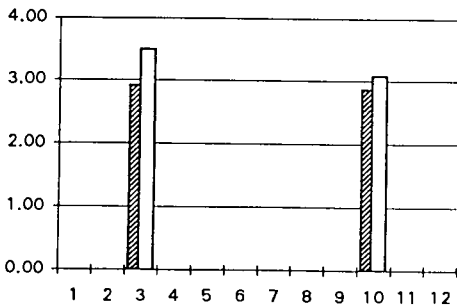
I4-2 (2)



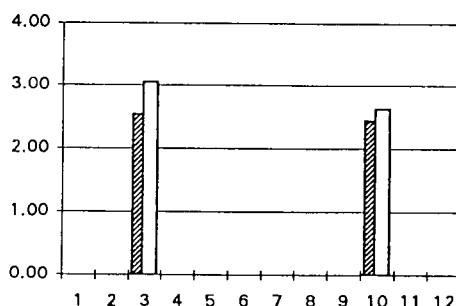
I4-2 (3)



I5 (1)



I5 (2)



I5 (3)

